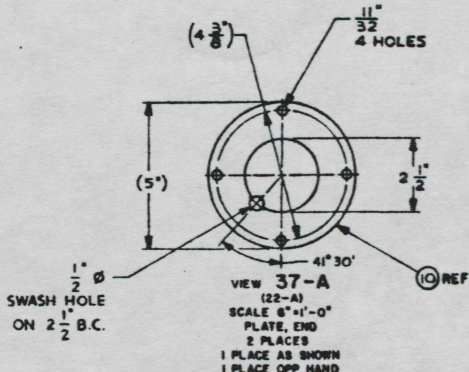
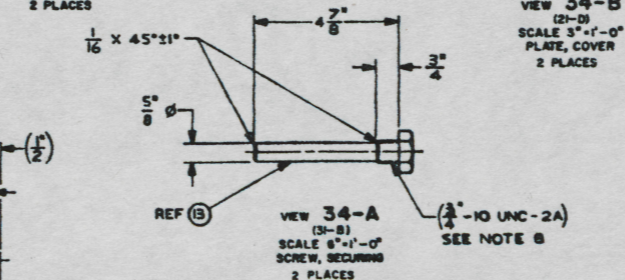
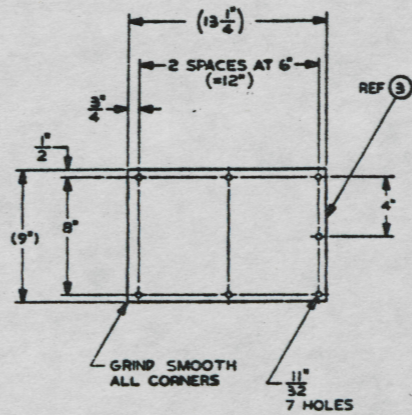
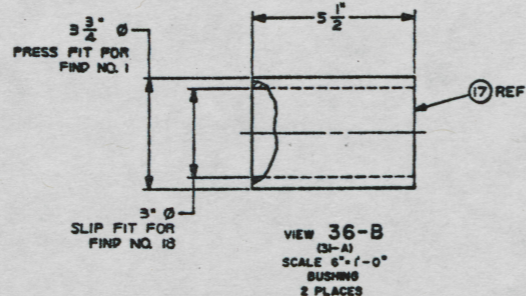
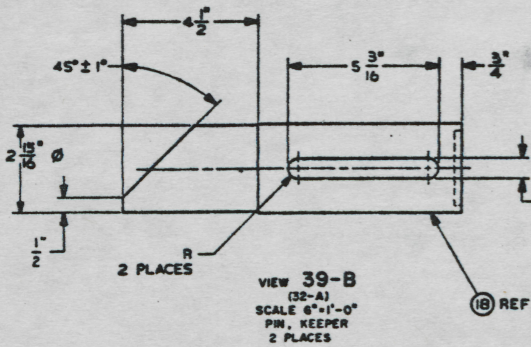
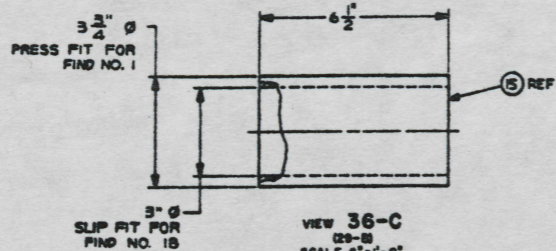
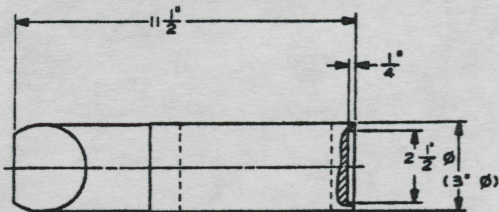
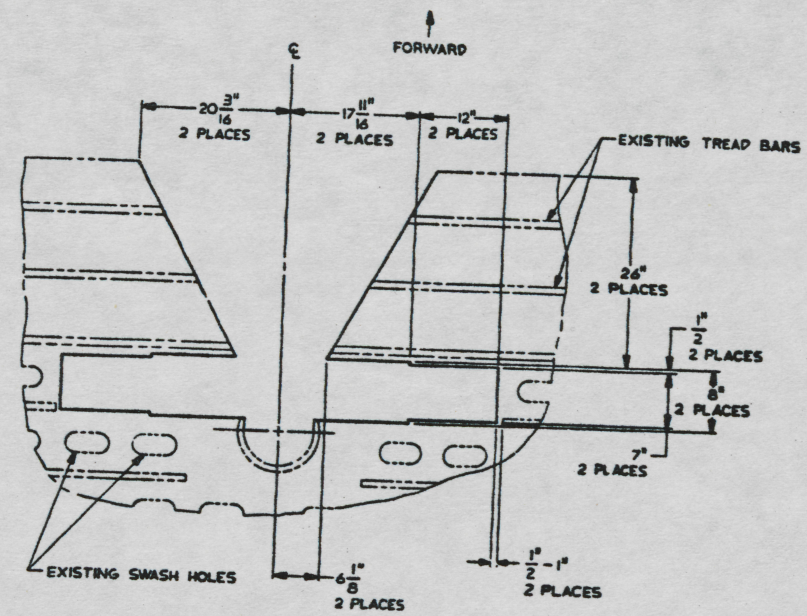


REVISION			
TYPE	LTG	DESCRIPTION	DATE



FIND NO.	CAGE	QTY	PART OR IDENTIFYING NO.	QTY	NONCLASSIFIED OR DESCRIPTION	SPECIFICATION	MATERIAL
PARTS LIST							
UNLESS OTHERWISE SPECIFIED DIMENSIONS ARE IN INCHES TWO PLACES (2) THREE PLACES (3) FOUR PLACES (4) FIVE PLACES (5) SIX PLACES (6) SEVEN PLACES (7) EIGHT PLACES (8) NINE PLACES (9) TEN PLACES (10) ELEVEN PLACES (11) TWELVE PLACES (12) THIRTEEN PLACES (13) FOURTEEN PLACES (14) FIFTEEN PLACES (15) SIXTEEN PLACES (16) SEVENTEEN PLACES (17) EIGHTEEN PLACES (18) NINETEEN PLACES (19) TWENTY PLACES (20) TWENTY-ONE PLACES (21) TWENTY-TWO PLACES (22) TWENTY-THREE PLACES (23) TWENTY-FOUR PLACES (24) TWENTY-FIVE PLACES (25) TWENTY-SIX PLACES (26) TWENTY-SEVEN PLACES (27) TWENTY-EIGHT PLACES (28) TWENTY-NINE PLACES (29) THIRTY PLACES (30)				DRAWN BY: RET/HA DATE: 20 NOV 67 CHECKED BY: GY/PA DATE: 22 NOV 67 CONTRACT NO.: APPROVED FOR PURCHASE: DATE: 31 AUG 67			
U.S. ARMY BELMONT RESEARCH, DEVELOPMENT, AND ENGINEERING CENTER FORT BELMONT, VIRGINIA 22060-0000				RHINO HORN SOCKET INSTALLATION, LCU 1667-1679			
SIZE: A1 CAGE: 97403 DATE: 31 AUG 67		SPEC: 13226E8059 DATE: 1967		PART NO.: DATE:		MATERIAL:	

REVISED		DATE	APPROVED
NO.	DESCRIPTION		



VIEW 15-B
(S-B)
MATERIAL REMOVAL
TOP RAMP PLATE
ROTATED 50° CCW



VIEW 10-B
(S-B)
MATERIAL REMOVAL
BOTTOM RAMP PLATE
ROTATED 35° CW

FORM NO.	CASE	QTY	PART OR IDENTIFYING NO.	QTY	NOMENCLATURE OR DESCRIPTION	SPECIFICATION	MATERIAL
PARTS LIST							
UNLESS OTHERWISE SPECIFIED DIMENSIONS ARE IN INCHES	DATE	U.S. ARMY					
ONE PLACE (.1)	RET/MA	SILVORN RESEARCH, DEVELOPMENT, AND ENGINEERING CENTER					
TWO PLACE (.01)	CHECKED BY: F.M.D.	PORT SILVORN, VIRGINIA 22060-0000					
THREE PLACE (.001)	TRIALS MADE	CONTRACT NO.					
FOUR PLACE (.0001)	CONTRACT NO.	APPROVED FOR PURCHASEMENT					
DO NOT SCALE THIS DRAWING	FEDERAL ACQUISITION REGULATION (FAR) 48.201-105 APPLIES	DATE: 31 JUL 87					
REMOVE BURRS AND CHAMF EDGES TO	REMOVE BURRS AND CHAMF EDGES TO	APPROVED FOR PURCHASEMENT					
DRAWN SHARP EDGES FILLET RADIUS	FILLET RADIUS	DATE: 31 JUL 87					
MATERIAL		APPROVED FOR PURCHASEMENT					
						SHEET	2

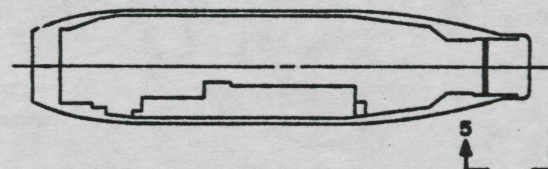
RHINO HORN
SOCKET INSTALLATION,
LCU 1667-1679

CASE NO. A1 97403
JOB NO. 13226E8059

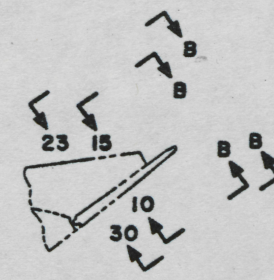
REFERENCE DRAWINGS	
NO. DRAWING NO.	TITLE
1	120-6834371 BOB RAMP AND MECHANICAL DETAILS

SHEET NO.				STATUS OF REVISION		DATE	APPROVED
1	2	3	4	DESCRIPTION			

- NOTES:
- THIS DRAWING HAS BEEN DEVELOPED FROM BOAT DRAWING INFORMATION FOR ACCOMPLISHING THE INSTALLATION OF RHINO-HORN SOCKET ASSEMBLY.
 - ALL FABRICATION WELDING AND INSPECTION TO BE IN ACCORDANCE WITH NAVSEA 0900-LP-014-5010, WELD SIZES BASED ON USE OF AWS A5.1, CLASS E7018 ELECTRODES FOR LC STEEL TO LC STEEL.
 - EQUIPMENT AND WORKMANSHIP SHALL BE IN ACCORDANCE WITH USCS AND ABS REGULATIONS.
 - REPAIR ALL PAINT DAMAGED BY THIS INSTALLATION AND PAINT ALL NEW STEEL IN ACCORDANCE WITH U.S. ARMY TECHNICAL BULLETIN TM3-0344.
 - MATERIAL ORDERED ON THIS DRAWING IS NOT INTENDED TO BE RESTRICTIVE. SUBSTITUTION OF EQUAL QUALITY MATERIAL MAY BE MADE.
 - SLIGHT DEVIATIONS FROM DIMENSIONS SHOWN ARE PERMISSIBLE TO SUIT ACTUAL CONDITIONS FOUND ABOARD THE VESSEL.
 - COMPONENTS SHOWN BY SOLID, HEAVY LINES ARE NEW, ORDERED AND INSTALLED IN ACCORDANCE WITH THIS DRAWING. LIGHT, BROKEN OR PHANTOM LINES INDICATE COMPONENTS EXISTING OR ORDERED ON AND INSTALLED BY DRAWING REFERENCE AS NOTED.
 - SCREW, FINE NO. 15, SHALL BE MODIFIED AS SHOWN ON SHEET 5.
 - MODIFICATION TO BOB RAMP IS SYMMETRICAL ABOUT VESSEL CENTERLINE. WELDS AND ITEMS IDENTIFIED ARE COMMON TO PORT AND STARBOARD SIDES.
 - PROVIDE A 2" DIA. ACCESS HOLE THRU PLATE, FINE NO. 2, FOR INSTALLATION AND REMOVAL OF SCREW, FINE NO. 15 (SEE SECT 30-A). HOLE SHALL BE ALIGNED WITH SCREW CENTERLINE.
 - DIMENSION "10 1/8\"", IS FOR REFERENCE PURPOSES ONLY. PLATES, FINE NO. 6, 7, 8 AND 9, SHALL BE TEMPLATED FROM RAMP AND CUT TO FIT. SEE NOTE 6.
 - SQUARE BAR, FINE NO. 20, IS FOR REPLACEMENT OF EXISTING SECTION OF TREAD-BAR CUT AWAY DURING VESSEL MODIFICATION.



KEY PLAN 5-B
SCALE NONE



VIEW 5-A
SCALE NONE

QTY	PART NO.	DESCRIPTION	SPECIFICATION	MATERIAL
20		BAR, SQUARE, 1" STK X 11" L	ASTM A36	STEEL
19	HS16942-237	PIR. SPRING-TUBULAR, SLOTTED, 3/16" DIA X 7/8" L		CRES
18	17-4PH	BAR, ROUND, 3" DIA X 11 3/4" L, 40-45 Rc	ASTM A564	CRES
17	70K17	CC-5702-1		COIL
16	50880	S-5094		COIL
15	70K17	CC-5701-1		COIL
14	HS35330-146	WASHER, LOCK-SPRING, HELICAL, 3/4" NOM DIA		CRES
13	HS35307-499	SCREW, CAP, HEX HD, 3/8-10 UNC-2A X 5" L		CRES
12		PLATE, 1/2" STK X 9 15/16" X 30" L	ASTM A36	STEEL
11		PLATE, 1/2" STK X 26 11/16" X 33 3/4" L	ASTM A36	STEEL
10		PLATE, OR BAR, 1/2" STK X 5" OD	ASTM A36	STEEL
9		PLATE, 1/2" STK X 10 1/8" X 11 7/8" L	ASTM A36	STEEL
8		PLATE, 1/2" STK X 8 1/2" X 10 1/8" L	ASTM A36	STEEL
7		PLATE, 1/2" STK X 9 1/8" X 11 1/4" L	ASTM A36	STEEL
6		PLATE, 1/2" STK X 8" X 10	ASTM A36	STEEL
5	HS35330-140	WASHER, LOCK-SPRING, HELICAL, 5/16" NOM DIA		CRES
4	HS31959-96	SCREW, MACHINE, FLAT HD, X-NECESSED, 5/16-18 UNC-2A X 3/4" L		CRES
3		PLATE, 1/4" STK X 9" X 13 1/4" L	ASTM A36	STEEL
2		PLATE, 5/16" STK X 8" X 12 7/8" L	ASTM A36	STEEL
1	UNS G10260	TUB, WID RECN, 5" OD X 5/8" W X 12 7/8" L	ASTM A519	STEEL

PARTS LIST

UNLESS OTHERWISE SPECIFIED DIMENSIONS ARE: .001 IN.
 THE PLACE (.1) IS --
 THE PLACE (.001) IS --
 THE PLACE (.0005) IS --
 UNLESS OTHERWISE SPECIFIED DIMENSIONS ARE: .001 IN.
 THE PLACE (.1) IS --
 THE PLACE (.001) IS --
 THE PLACE (.0005) IS --

DATE: 31 NOV 87
 CHECKED BY: G.T. P...
 DESIGNED BY: R. L...
 APPROVED FOR PRODUCTION: R. L...
 DATE: 31 NOV 87

U.S. ARMY
 BELFON RESEARCH, DEVELOPMENT, AND ENGINEERING CENTER
 PORT BELFON, VIRGINIA 22060-0000

**RHINO HORN
 SOCKET INSTALLATION,
 LCU 1667-1679**

ITEM NO. A1 97403
 PART NO. 13226E8059
 SHEET 1 OF 8