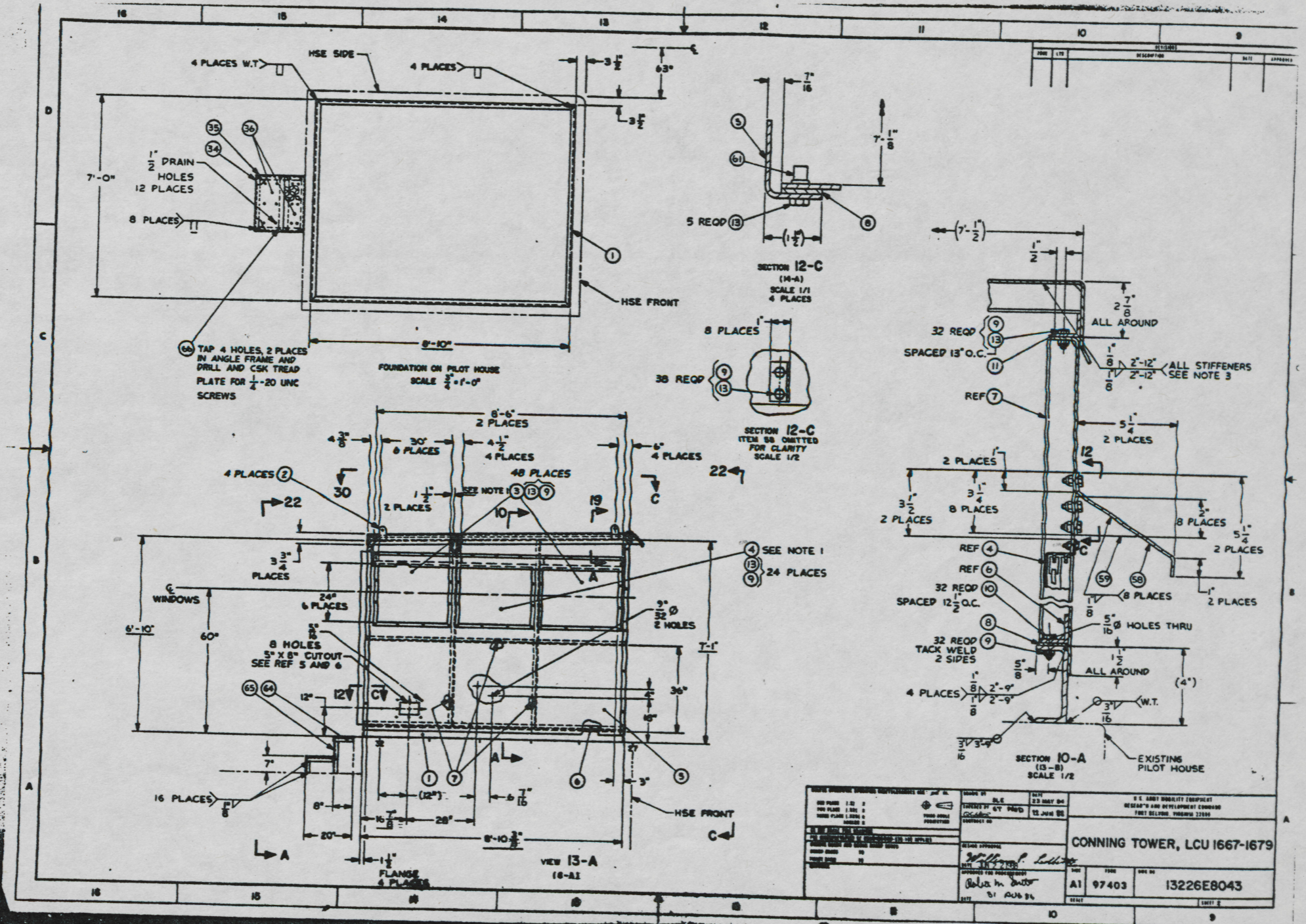


DATE	BY	APPROVED

DESIGNED BY DRAWN BY CHECKED BY DATE	DATE 7 MAY 54	U.S. ARMY MOBILITY EQUIPMENT RESEARCH AND DEVELOPMENT COMMAND FORT BELVOIR, COLORADO
TITLE CONNING TOWER	DATE 22 JAN 54	CONNING TOWER, LCU 1667-1679
PROJECT NUMBER A1 97403	DRAWING NUMBER 13226E8043	SHEET NO. 13226E8043



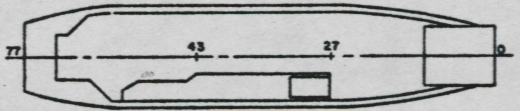
NO.	REV.	DESCRIPTION	DATE	APPROVED

TITLE: CONNING TOWER, LCU 1667-1679 DRAWN BY: [Signature] CHECKED BY: [Signature] DATE: 31 AUG 64	U.S. ARMY MOBILITY EQUIPMENT RESEARCH AND DEVELOPMENT COMMAND FORT BELLEVILLE, ILLINOIS 62206 CONNING TOWER, LCU 1667-1679 A1 97403 13226E8043
--	--

SHEETS						STATUS OF REVISION		DATE	APPROVED
6	5	4	3	2	1	DESCRIPTION			

REFERENCE DRAWINGS		
NO.	DRAWING NO.	TITLE
1	001-4634488	PILOT HOUSE ARREST
2	129-4634376	RADAR MOUNT & ANTENNA SPRTS
3	129-4661040	RADAR MOUNT
4	13226E008	ELECTRICAL AND INTERIOR COMMUNICATION
5	13226E003	SYSTEM MODIFICATION, LCU 1671-1679
6	13226E030	MODS TO HVAC SYS, LCU 1667-1670
7	13226E032	MODS TO HVAC SYS, LCU 1677/1679
8	13226E032	ELECTRICAL AND INTERIOR COMMUNICATION
9	13226E032	SYSTEM MODIFICATION, LCU 1667-1670

- NOTES:
- CUT ALL WINDOW OPENINGS IN ACCORDANCE WITH MANUFACTURER'S INSTRUCTIONS.
 - ALL FABRICATION, WELDING AND INSPECTION TO BE IN ACCORDANCE WITH NAV 0900-014-8010.
 - ALL SIDES AND TOP ALUMINUM STIFFENERS TO HAVE DOUBLE CONTINUOUS WELD FOR 1/10TH OF THEIR LENGTHS AT EACH END.
 - REPAIR ALL PAINT DAMAGED BY THIS INSTALLATION AND PAINT ALL HEV STEEL AND ALUMINUM IN ACCORDANCE WITH U.S. ARMY TECHNICAL BULLETIN TM-3-319. INTERIOR COLOR OF CONNING TOWER TO BE CLIPPER BLUE.
 - ALUMINUM WELDING SHALL BE IN ACCORDANCE WITH MIL-STD-879.
 - USE ADAPTOR PLATE, FIND NO. 19, WITH RADAR TRUSSION FOR CANADIAN MARCONI RADAR EQUIPMENT. SECURE RADAR WITH EXISTING HARDWARE.
 - PILOT HOUSE SHELTER MUST BE FABRICATED AS SHOWN ON THE DRAWING TO ENSURE THE SHELTER CAN BE DISASSEMBLED IN FIVE SECTIONS.
 - WELD ALUMINUM STUDS IN ACCORDANCE WITH MIL-3-24190.
 - MATERIAL ORDERED ON THIS DRAWING IS NOT INTENDED TO BE RESTRICTIVE. SUBSTITUTION OF EQUAL QUALITY MATERIAL MAY BE MADE EXCEPT FOR ITEMS MARKED SFE.
 - COMPONENTS SHOWN BY SOLID, HEAVY LINES ARE NEW, ORDERED AND INSTALLED IN ACCORDANCE WITH THIS DRAWING. LIGHT, BROKEN OR PHANTOM LINES INDICATE COMPONENTS EXISTING OR ORDERED OR AS INSTALLED BY DRAWINGS REFERENCED AS NOTED.
 - SLIGHT DEVIATIONS FROM DIMENSIONS SHOWN ARE PERMISSIBLE TO SUIT ACTUAL CONDITIONS FOUND ABOARD THE VESSEL.
 - EQUIPMENT AND WORKMANSHIP SHALL BE IN ACCORDANCE WITH USCS AND ABB REGULATIONS.
 - DOOR, FIND NO. 23, SHALL BE MADE TO THE FOLLOWING DATA:
DIM W (CLEAR OPENING WIDTH) = 24"
DIM L (CLEAR OPENING HGT) = 66"
DIM S (FRAME WIDTH) = 56 1/2"
DOOR SERIES (CORNELL-CARR) CC-2045-B WITH 18" X 24" WINDOW MATERIAL - ALUM ALY
 - LOCATE RADAR TRUSSION STANDOFFS SO THAT THERE IS NO INTERFERENCE WITH CONNING TOWER SIDES WHEN RADAR IS ROTATED 360°.
 - SECURE DRAFTING LINOLEUM, FIND NO. 48, TO CHART TABLE L18 AND REFERENCE TABLE, USING 1" WIDE DOUBLE FACED TAPE.
 - APPLY SILICONE SEALING COMPOUND AT WINDOW FRAMES AND AT ALL EXTERNAL JOINTS.
 - MATERIAL FOR WINDOWS, FIND NO. 3, 4, 12, 14 AND 28, ALUMINUM FRAME 1/4" THICK LAMINATED SAFETY GLASS (TINTED GREEN FOR FIND NO. 12 AND 28) RUBBER GLAZING.
 - CHART TABLE TO BE LOCATED AT THE DISCRETION OF THE SHIP'S SURVEYOR. TABLE TO BE SECURED TO CONNING TOWER, SEE VIEW NO. 4.
 - FIND NO. 37 MAY BE A RIVETED 3 PIECE CONSTRUCTION.
 - THE FRONT WINDOW PANEL MAY BE A SEPARATE SHEET WELDED ALL AROUND.
 - RUBBER EXTENSION, FIND NO. 60, TO COVER ENTIRE EDGE OF FIND NO. 37. SECURE USING SUITABLE ADHESIVE.



YARD	NO.	QTY	DESCRIPTION	UNIT	CONC.	FIN.
YARD 00	70011	1	3-4327	771	3/4" CHANNEL, EXTRUDED (ALUMINUM)	CONC.
YARD 00	30900	NO.	80017ABP	2	SCREW, QUARTER TURN, 1/4" X 20 UNC-2A 1 1/4" L (NCH-CARR)	STEEL
YARD 07	30900	NO.	1506421	1	HINGE, 3" OPEN X 6" L (NCH-CARR)	CONC.
YARD 06	HE26190-207	0	SCREW, CSE NO. 804, CORRUS-RESISTANT, 1/4" X 20 UNC-2A X 1 1/2" L			STL CAD PL.
YARD 06		2	ANGLE, 1 1/2" X 1 1/2" X 3/16" X 15" L		ASTH A36	STEEL
YARD 06		2	ANGLE, 1 1/2" X 1 1/2" X 3/16" X 9" L		ASTH A36	STEEL
YARD 09		6	SHEET, 1/8" X 27" X 91"		ASTH B200	AL ALY
YARD 09	ALY 6063-T82	1	ANGLE, 1" X 1" X 1/8" X 18" L		ASTH B221	AL ALY
YARD 01	HE27130-CH133	29	RIVET, PLAIN, BLIND RIVET CSE NO. 500-20 UNC. 20-191 BRP			CRS
YARD 00	Y890 PCH 263177	1	THEMOMETER, 120 YAC, 25 AMP, OR 3000 TOTAL WATTS, 40-200 (CHROMIUM)			VARIOUS
YARD 07	ALY 6063-T8	8	SHEET, 1/8" X 1" X 1 1/2"		ASTH B200	AL ALY
YARD 06	ALY 6063-T8	2	SHEET, 1/8" X 1 1/2" X 9"		ASTH B200	AL ALY
YARD 07	ALY 6063-T8	2	SHEET, 1/8" X 1 1/2" X 9"		ASTH B200	AL ALY
YARD 06	ALY 6063-T82	4	ANGLE, 1" X 1" X 1/8" X 1 1/2" L		ASTH B221	AL ALY
YARD 06	ALY 6063-T8	1	SHEET, 1/8" X 10 1/2" X 24"		ASTH B200	AL ALY
YARD 04	ALY 6063-T8	1	SHEET, 1/8" X 10 1/2" X 24"		ASTH B200	AL ALY
YARD 03	HE202848-0	20	RIVET, SOLID, 100° CSE, 3/16" DIA X 9/16" L			AL ALY
YARD 02	30929	7	HINGE, 3" OPEN X 2 1/2" L (NCH-CARR)		CONC.	AL ALY
YARD 01	NO. 1600410	1	ANGLE, 1" X 1" X 1/8" X 1 1/2" WIDE		ASTH A36	STEEL
SUPPLIER	FIND NO.	QTY	DESCRIPTION	SPECIFICATION	MATERIAL	

YARD	NO.	CLASS	OR A	AR	ADHESIVE, FIRE RESISTANT, THERMAL INSULATION <th>MIL-A-3318</th>	MIL-A-3318
YARD 40		TYPE II, CL I		AR	GLASS CLOTH TAPE, 3" WIDE, 5.00 OZ PER 50 YD	MIL-C-20079
YARD 06	06006	1	SA	DRIFTING LINOLEUM, 27 1/2" X 54" (NAT. LINE)	CONC.	OFF-BMT (INCL)
YARD 07	ALY 6061-T8	1		SHEET, 126" X 6" X 27 1/2"	ASTH B200	AL ALY
YARD 06	ALY 6061-T8	1		SHEET, 126" X 6" X 27 1/2"	ASTH B200	AL ALY
YARD 06	NO. 1600417	4		HINGE, 3" OPEN X 3" L (NCH-CARR)	CONC.	AL ALY
YARD 06	ALY 6063-T82	2		ANGLE, 2" X 2" X 3/16" X 24"	ASTH B221	AL ALY
YARD 03	ALY 6063-T82	2		ANGLE, 2" X 2" X 3/16" X 23"	ASTH B221	AL ALY
YARD 02	ALY 6063-T82	4		ANGLE, 2" X 2" X 3/16" X 30"	ASTH B221	AL ALY
YARD 01	ALY 6061-T8	2		SHEET, 2ND TMR X 22" X NO 3/4"	ASTH B200	AL ALY
YARD 00	30929	4		CHEST HANDLE, 1/16" X 3" X 1/8" X 1/8" INSIDE HANDLE (NCH-CARR)	CONC.	STEEL
YARD 09	ALY 6063-T82	2		ANGLE, 1" X 1" X 1/8" X 22 1/2"	ASTH B221	AL ALY
YARD 08	ALY 6061-T8	1		SHEET, 1/8" X 10 1/2" X 27 1/2"	ASTH B200	AL ALY
YARD 07	ALY 6061-T8	1		SHEET, 1/8" X 10 1/2" X 27 1/2"	ASTH B200	AL ALY
YARD 06		1		DIAMOND TREAD PLATE, 1/4" X 23" X 26"	ASTH A36	STEEL
YARD 06		2		ANGLE, 1 1/2" X 1 1/2" X 3/16" X 12" L	ASTH A36	STEEL
YARD 06		4		ANGLE, 1 1/2" X 1 1/2" X 3/16" X 23" L	ASTH A36	STEEL
YARD 06		2		ANGLE, 1 1/2" X 1 1/2" X 3/16" X 3" L	ASTH A36	STEEL
YARD 02	ALY 6063-T82	8		ANGLE, 1 1/2" X 1 1/2" X 1 1/2" X 1 1/2" WIDE	ASTH B221	AL ALY
YARD 01	HE29071-82	10		SCREW, CAP, SDR, FLAT CTR, 82°, 3/8"-16 UNC-3A X 1" L	HE29071	CRS
SFE	30	80000	80000	1	RADAR TRUSSION, SHVEL MOUNT, 28 1/2" BASE TO CENTER LINE	CONC.
YARD 09		6		NO BAR, 1" DIA X 5/8" L	ASTH A36	STEEL
SFE	26	21200	CC-1046-B	1	FIXED WINDOW FOR 24" X 34" CUTOFF (CORNELL-CARR)	CONC.
YARD 27		1		LIGHT FIXT, STD MOUNT, 3 LAMPS, 1 MED FILTER TUBE, 20V/40W, 60Hz	MIL-F-16277/12	VARIOUS
YARD 26	90400	NO.	25264	1	COMBINATION BOX WITH 2 RECEPTS, 15A, 125 YAC (PAULSON)	ALUMINUM
YARD 25	HE23007-308	6		SCREW, HEX, 3/8" X 18 UNC-2A X 3/4" LONG	HE23007	CRS
YARD 24	HE21002-18	10		RIVET, HEX, 3/8" X 18 UNC-2A	HE21002	CRS
SFE	23	21200	CC-2045	1	SLIDING DOOR, EXTERIOR HTG, WEATHERTIGHT (CORNELL-CARR)	CONC.
YARD 22	ALY 6063-K22	2		SHEET, 1/8" X 11" X 11"	ASTH B200	AL ALY
SFE	21	31100	ES-1386-18	2	PERMULUM WINDOW WIPER WITH CONTROLLER, 16" BLADE (SINGER)	CONC.
YARD 20		2		CLASS 2	AR	ADHESIVE, FIRE RESISTANT, THERMAL INSULATION
YARD 19		1		PLATE, 1/4" X 18" X 17 5/8"	ASTH A36	STEEL
YARD 18	50063	VP	CT	AR	WELD PIG, 12 GA X 1 1/8" L (ERICO JONES)	CONC.
YARD 17	50063	WCH	CRW	AR	CAPPED SPEED WASHER, 12 (ERICO JONES)	CONC.
YARD 16		TYPE 7		AR	FIBROUS GLASS SOUND INSULATION, 1" THK, 2 FT X 8 FT	MIL-1-782
YARD 16	HE202848-0	4		RIVET, BLIND STRUCTURAL, 180 TO 250 BRP, AL 5050	HE20284	AL ALY
SFE	14	21200	CC-1046-B	2	FIXED WINDOWS FOR 18" X 24" CUTOFF (CORNELL-CARR)	CONC.
YARD 13	HE23007-308	183		SCREW, HEX, 3/8" X 18 UNC-2A X 3/4" LONG	HE23007	CRS
SFE	12	21200	CC-1045-A	1	HINGED WINDOW FOR 24" X 30" CUTOFF (CORNELL-CARR)	CONC.
YARD 11	ALY 6063-T82	2271		ANGLE, 1 1/2" X 1 1/2" X 3/16"	ASTH B221	AL ALY
YARD 10	HE23007-308	60		SCREW, HEX, 3/8" X 18 UNC-2A X 1" LONG	HE23007	CRS
YARD 9	HE21002-2	208		RIVET, HEX, 3/8" X 18 UNC-2A, SLFLRG	HE21002	CRS
YARD 8		TYPE I, CLASS 1		AR	BASKET, 1/8" X 10" X 10" (ERICO JONES)	MIL-C-1169
YARD 7	ALY 6063-T82	18871		ANGLE, 1 1/2" X 1 1/2" X 1/8"	ASTH B221	AL ALY
YARD 6	ALY 6063-T82	2271		ANGLE, 1 1/2" X 1 1/2" X 3/16"	ASTH B221	AL ALY
YARD 6	ALY 6063-T82	2271		ANGLE, 1 1/2" X 1 1/2" X 3/16"	ASTH B200	AL ALY
SFE	4	21200	ALY 6063-K22	AR	SHEET, 1/8" X 11" X 11"	CONC.
SFE	3	21200	CC-1386-A-8	2	SLIDING WINDOWS FOR 24" X 30" CUTOFF (CORNELL-CARR)	CONC.
YARD 2	CC-1046-B	4		FIXED WINDOWS FOR 24" X 30" CUTOFF (CORNELL-CARR)	CONC.	
YARD 1	ALY 6063-K11	1		FLAT BAR, 7/16" X 3" X 1/4" THK	ASTH B211/221	AL ALY
YARD 1		2271		CHANNEL, 4" X 6 25 LB/FT	ASTH A36	STEEL

CONNING TOWER, LCU 1667-1679

U.S. ARMY
BELVON RESEARCH, DEVELOPMENT, AND ENGINEERING CENTER
FORT BELVON, VIRGINIA 22060-9006

CONTRACT NO. _____

DESIGN APPROVAL: _____ DATE: 12 JUN 80

CHECKED BY: _____ DATE: 12 JUN 80

DESIGNED BY: _____ DATE: 12 JUN 80

APPROVED FOR PROCUREMENT: _____ DATE: 21 JUN 80

SHEET 1 OF 6