

- NOTES:
1. PEEN END OF THREADS ON EYEBOLT, FIND NO. 26 AND 31, TO CAPTIVATE WING NUT, FIND NO. 28.
 2. ALL FABRICATION WELDING AND INSPECTION TO BE IN ACCORDANCE WITH NAVSEA 0900-LP-014-5010.
 3. TEMPLATE ALL WORK FROM LCU AND EQUIPMENT.
 4. EQUIPMENT AND WORKMANSHIP SHALL BE IN ACCORDANCE WITH USCG, ABS AND IEEE NS REGULATIONS.
 5. COMPONENTS SHOWN BY SOLID, HEAVY LINES ARE NEW, ORDERED AND INSTALLED IN ACCORDANCE WITH THIS DRAWING. LIGHT, BROKEN OR PHANTOM LINES INDICATE COMPONENTS EXISTING OR ORDERED ON AND INSTALLED BY DRAWINGS REFERENCED AS NOTED.
 6. REPAIR ALL PAINT DAMAGED BY THIS INSTALLATION AND PAINT ALL NEW STEEL IN ACCORDANCE WITH U.S. ARMY TECHNICAL BULLETIN TM9-0104.
 7. MATERIAL ORDERED ON THIS DRAWING IS NOT INTENDED TO BE RESTRICTIVE. SUBSTITUTION OF EQUAL QUALITY MATERIAL MAY BE MADE EXCEPT FOR ITEMS MARKED GFE.
 8. SLIGHT DEVIATIONS FROM DIMENSIONS SHOWN ARE PERMISSIBLE TO SUIT ACTUAL CONDITIONS FOUND ABOARD THE VESSEL.
 9. SECURE RUBBER GASKET MATERIAL, FIND NO. 2, TO STEEL SHEET, WITH SUITABLE ADHESIVE.
 10. WATERTIGHT DUCT SHALL BE LOOS WELDED CONSTRUCTION.
 11. APPLY INSULATION TO DUCTING IN ACCORDANCE WITH REF 5. INSULATION TO BE SECURED TO REMOVABLE FRONT COVER PLATE ASSEMBLY SO AS TO PREVENT IT ENTERING INNER DUCT OPENING.
 12. CUT LEG OF ANGLES, FIND NO. 15, TO SUIT C.L. OF STRAINER.
 13. LOCATE PUMP TO ALIGN WITH EXISTING INLET AND OUTLET.
 14. APPLY TEFLON TAPE TO THREADS BEFORE INSERTING INTO PUMP.
 15. LOCATE SECURING STUDS APPROXIMATELY AS SHOWN USING VENT COVER AS A TEMPLATE.
 16. VENT COVER SIDE MAY BE A TWO PIECE CONSTRUCTION.

REFERENCE DRAWINGS		
NO.	DRAWING NO.	TITLE
1	501-4634408	HVAC ARMOR AND DETS
2	13226E8043	CONTINUING TOWER, LCU 1667-1670
3	201-4634362	F.O & A.C COOLING SYSTEM
4	113-4634467	FINDS A.C MACHRY RPT
5	808-5773932	ACOUSTIC AND THERMAL INSUL FOR DUCTS

SHEET		STATUS OF DRAFTING		DATE		APPROVED	
NO.	REV.	DESCRIPTION	DATE	DATE	DATE	DATE	DATE

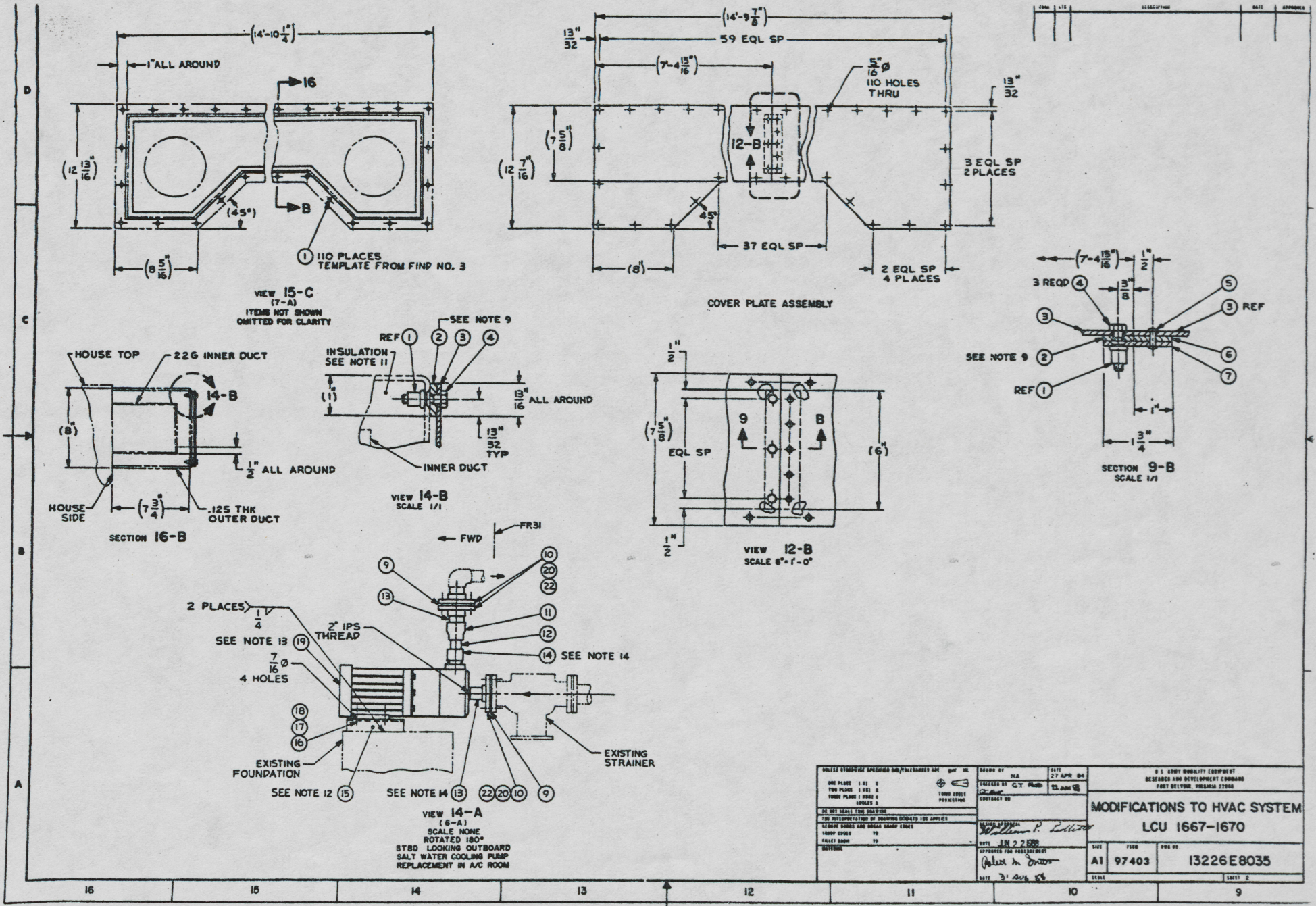
YARD	NO.	DESCRIPTION	QTY	UNIT	ASTM	MATERIAL
YARD 34		H GRADE OPTL	AR	BAR, FLAT, 1/8" THK X 1" X 82" L	ASTM A575	STEEL
YARD 33			2	PLATE, 1/8" THK X 19 3/4" X 21 3/4" L	ASTM A36	STEEL
YARD 32		H GRADE OPTL	8	BAR, FLAT, 1/8" THK X 1" X 2 1/8" L	ASTM A575	STEEL
YARD 31	39428	9489731	8	EYEBOLT, 3/8"-16 UNC X 2 1/2" L (MCMASTER-CARR)		STEEL
YARD 30		H GRADE OPTL	8	BAR, FLAT, 1/8" THK X 1" X 2" L	ASTM A575	STEEL
YARD 29			4	PLATE, 3/16" THK X 2 1/8" X 4 3/4" L	ASTM A36	STEEL
YARD 28		NS35425-75	10	NUT, PLAIN, WING, 3/8"-16 UNC-2B		BRASS
YARD 27		TYPE S, GR OPTL	2	PIPE, 3/8" NOM DIA, BLACK, SCHED NO X 2" L	ASTM A53	STEEL
YARD 26	39428	9489732	2	EYEBOLT, 3/8"-16 UNC-2B X 3 1/2" LONG (MCMASTER-CARR)		STEEL
YARD 25		H GRADE OPTL	10	BAR, ROUND, 1/4" DIA X 2 1/2" L	ASTM A575	STEEL
YARD 24		NS3245-04	4	PIN, COTTER, .050 NOM DIA X 3/4"		CRS
YARD 23		NS35810-4	4	PIN, STRAIGHT, HEADED (CLEVIS PIN) 3/8" NOM DIA X 1.062 L		STL, CD PL
YARD 22		NS51922-54	8	NUT, SELF LOCKING, 5/8"-18 UNF-2B, PREVAILING TORQUE		CRS
YARD 21	39428	NO. 9220723	AR	50 MESH WIRE CLOTH, 2 MESHES/IN., .063 WIRE DIA (MCMASTER-CARR)		STEEL, GALV
YARD 20		NS35308-464	8	SCREW, CAP, HEX HD, 5/8"-18 UNF-2A X 2" LONG		CRS
GFE	19	92780	1	PUMP, MODEL #909, 2" NPT INLET, 1 1/2" OUTLET		VARIOUS
				MOTOR 1/2HP FRAME, 5 H.P., 3505 RPM, 3 PH 60 HZ, 208/230/460 V, GE MODEL SK182JX5211 (LANCASTER)		
YARD 18		NS27183-14	4	WASHER, FLAT-ROUND, 13/32" NOM DIA, CD PL		STEEL
YARD 17		NS51922-22	4	NUT, SELF-LOCKING, 3/8"-24 UNF-2B, PREVAILING TORQUE		CRS
YARD 16		NS35308-360	4	SCREW, CAP, HEX HD, 3/8"-24 UNF-2A X 1" LONG		CRS
YARD 15			2	ANGLE, 3" X 2" X 1/4" X 8" L	ASTM A36	STEEL
YARD 14	72423	FIG. 5160-300	1	ADAPTER, FF X MALE THD, 200#, 1 1/2" X 1 1/2" NPT (FLAG)		CONL
YARD 13		COPPER HD, OPTL	AR	PIPE, 2" IPS X .156 WALL SRL ANNEALED	ASTM B42	COP.
YARD 12		UNS NO., OPTL	AR	PIPE, 1 1/2" IPS X .072 WALL, SRLS ANNEALED	ASTM B366	CNA
YARD 11	72423	FIG. 5150-399	1	COMPLING, REDUCING, FF X FF, 200#, 2" X 1 1/2" SB (FLAG)		CONL
YARD 10	72423	FIG. 5170-400	3	FLANGE, COMPANION, 2" IPS, 150# SB (FLAG)		CONL
YARD 9			2	GASKET, FULL FACE, 2" NOM PIPE SIZE (ANSI B16.24 FLANGE)	ANSI B16.21	RBR
				1/8" THK		
YARD 8		TYPE OPTL	AR	SHEET, 11 GA, GALV	ASTM A525	STEEL
YARD 7			1	SHEET, 11 GA X 1 3/4" X 6"	ASTM A569	STEEL
YARD 6			1	SHEET, 11 GA X 1" X 6"	ASTM A569	STEEL
YARD 5		NS20613-0P10	5	RIVET, SOLID, UNIV HD, 1/8" DIA X 1/8" L, CD PL		STEEL
YARD 4		NS35308-308	121	SCREW, CAP, HEX HD, 1/4"-28 UNF-2A X 1" L, CD PL		CRS
YARD 3			2	SHEET, 11 GA X 12 7/16" X 88 15/16"	ASTM A569	STEEL
YARD 2		TY 2, CL, C, GR 2	AR	SHEET, 1/8" THK, CLOSED CELL	ASTM D1056	RUBBER
YARD 1		NS27130-5105	121	NUT, PLAIN, BLIND RIVET, CSK HD, .250"-28 UNF-3B, .085"-151" GRIP, CD PL		STEEL

PARTS LIST		PARTS LIST	
UNLESS OTHERWISE SPECIFIED BY TOLERANCES ARE BY IN.	DATE	BY	DATE
ONE PLACE () 1	12 NOV 68	MT/AMF	
TWO PLACE () 2		CHECKED BY G.P. P.	
THREE PLACE () 3		PROJECT	
DO NOT SCALE THIS DRAWING		CONTRACT NO.	
FOR INTERPRETATION OF DRAWING SEE STD-100 APPLIED			
REMOVE CORNERS AND SHARP EDGES --- 10 ---			
SHARPEN CORNERS AND SHARP EDGES --- 10 ---			
APPROVED FOR PURCHASEMENT	DATE	BY	DATE
INITIAL			
	DATE	BY	DATE
	31 JAN 69		

U.S. ARMY
BELTHER RESEARCH, DEVELOPMENT, AND ENGINEERING CENTER
FORT BELTHER, VIRGINIA 22060-8000

MODIFICATIONS TO HVAC SYSTEM
LCU 1667-1670

SIZE: A1 97403
SCALE: 3" = 1'-0"
SHEET 1 OF 3



DATE	BY	REVISION	APPROVED

UNLESS OTHERWISE SPECIFIED DIMENSIONS ARE IN INCHES ONE PLACE (1.0) 0 TWO PLACES (1.00) 0 THREE PLACES (1.000) 0 DECIMALS 0	DESIGNED BY CHECKED BY CONTRACT NO.	DATE 27 APR 64 DRAWN BY 23 JAN 64	U S ARMY MOBILITY EQUIPMENT RESEARCH AND DEVELOPMENT COMMAND FORT BELTHER, VIRGINIA 22150
FOR THE DESIGN OF THIS DRAWING THE REPRESENTATION OF DIMENSIONS APPLIES TO ALL LEGEND SYMBOLS AND BREAK SYMBOLS HATCH SYMBOLS TO FINISH SYMBOLS TO MATERIALS	AUTHORIZED BY DATE 21 APR 64	TITLE 13226E8035 SHEET NO. A1 97403 SHEET 1	MODIFICATIONS TO HVAC SYSTEM LCU 1667-1670 13226E8035

16 15 14 13 12 11 10 9

REVISIONS			
TIME	DATE	DESCRIPTION	APPROVER

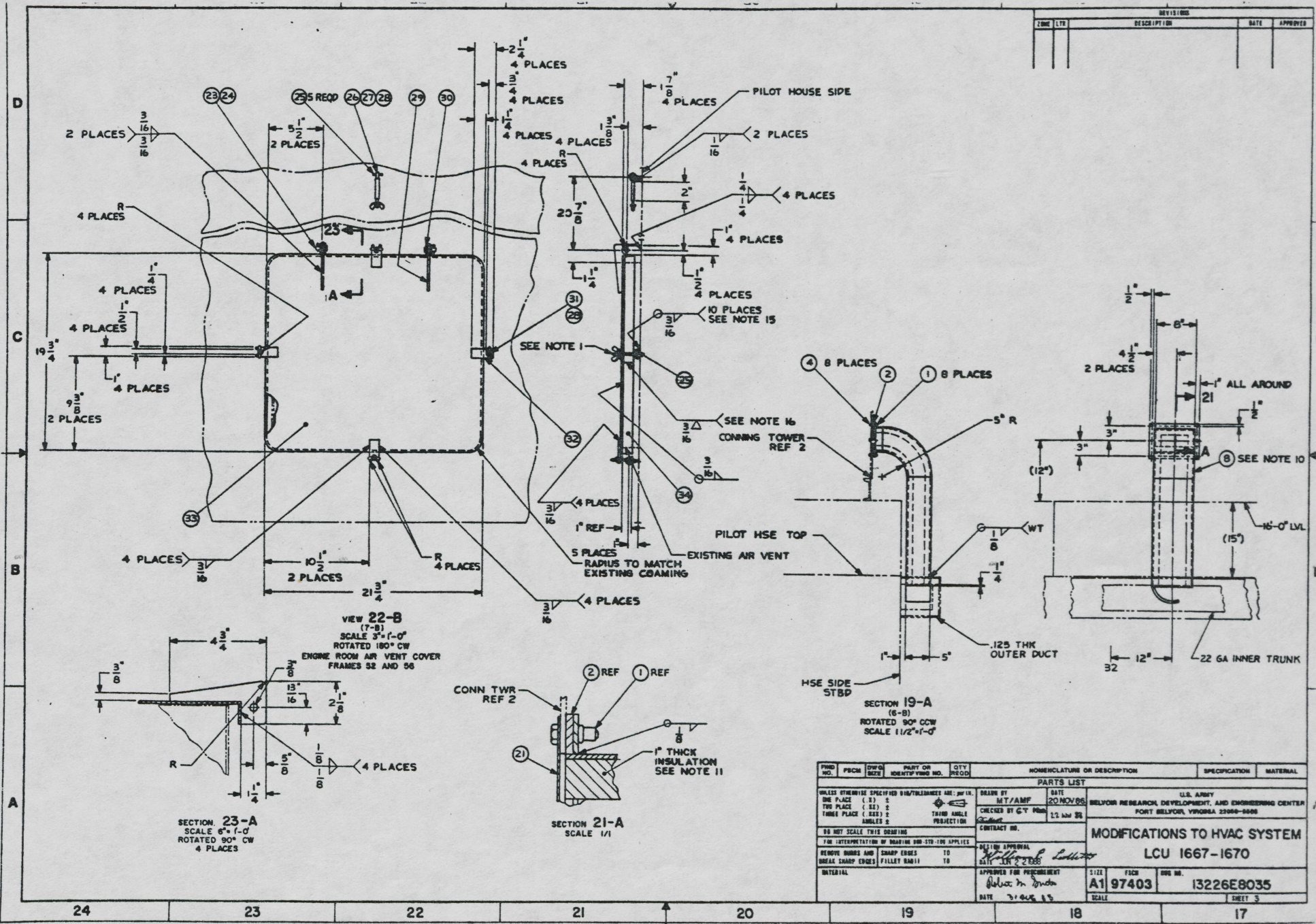


FIG. NO.	FIG. NO.	QTY	DESCRIPTION	SPECIFICATION	MATERIAL

PARTS LIST		DATE	

APPROVALS		DATE	

MODIFICATIONS TO HVAC SYSTEM		U.S. ARMY	

SIZE	FIG. NO.	DWG. NO.
A1	97403	13226E8035