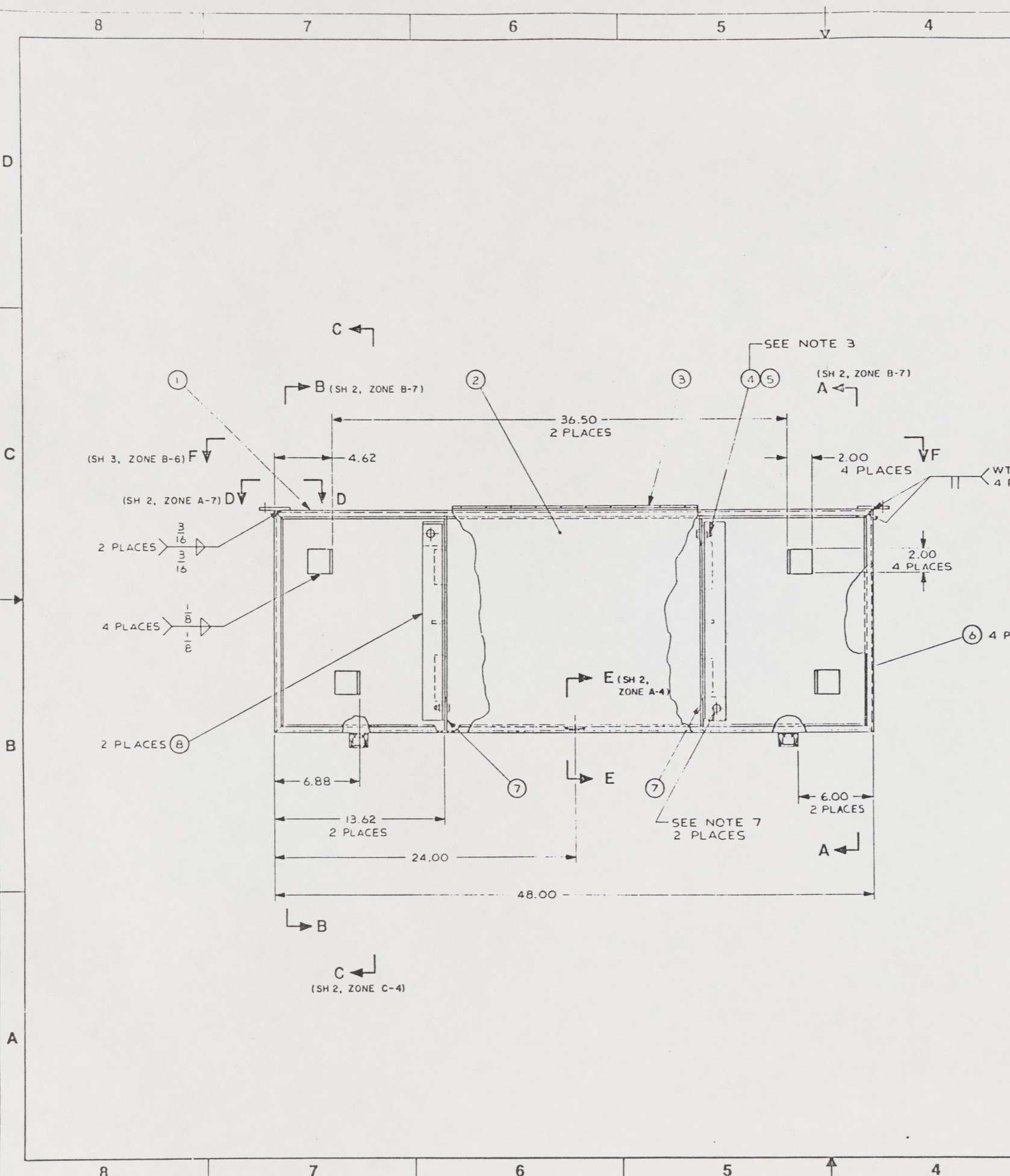


SHEETS		STATUS OF REVISIONS				
3	2	ZONE	LTR	DESCRIPTION	DATE	APPROVED



- NOTES:
- FIND NO. 1 AND 2 MAY BE A MULTI-PIECE CONSTRUCTION.
 - WELDING SHALL BE IN ACCORDANCE WITH MIL-W-45205, CLASS B.
 - PLEEN END OF THREADS OF SCREW, FIND NO. 4, TO RETAIN NUT, FIND NO. 5.
 - TREAT AND PAINT IN ACCORDANCE WITH MIL-T-704, TYPE G OR F, COLOR 24087, OF FED-STD-595.
 - RIVETING SHALL BE IN ACCORDANCE WITH 13217E1061, CLASS 3.
 - UNLESS OTHERWISE SPECIFIED ALL INSIDE BEND RADII TO BE .188 R.
 - PADLOCKS SHALL BE SUPPLIED BY USING ACTIVITY.

FIND NO.	CAGE	DWG SIZE	PART OR IDENTIFYING NO.	QTY REQD	NOMENCLATURE OR DESCRIPTION	SPECIFICATION	MATERIAL
18				2	ANGLE, 1.75 X 1.75 X .188 STK	ASTM A36	STEEL
17			MS20604-56W6	8	RIVET, BLIND, UNIV HD, .188 DIA X .313/.375 GRIP		STEEL
16			6061-T6	2	SHEET, .190 STK X 1.00 WIDE	ASTM B209	AL ALY
15			6061-T6	2	SHEET, .190 STK X 1.00 WIDE	ASTM B209	AL ALY
14			6061-T6	1	BAR, .188 X 1.50 STK	ASTM B221	AL ALY
13			6061-T6	2	BAR, .250 X 2.00 STK	ASTM B221	AL ALY
12			MS20604-AD6W4	42	RIVET, BLIND, UNIV HD, .188 DIA X .126/.250 GRIP		AL ALY
11	08733		18L01-1-1AA	2	LATCH AND STRIKE, HEAVY DUTY (REXWOD)	COML	STEEL
10			M1AA515	11 FT	SHEET, .125 STK X .62 WIDE	ASTM D2000	NEOPRENE
9			6061-T6	2	BAR, .25 X 1.00 STK	ASTM B221	AL ALY
8				2	ANGLE, 1.75 X 1.75 X .188 STK	ASTM A36	STEEL
7			6061-T6	2	SHEET, .190 STK	ASTM B209	AL ALY
6			6061-T6	4	SHEET, .190 STK	ASTM B209	AL ALY
5			MS1967-9	2	NUT, HEX, .375-16 UNC - 2B		STEEL
4			MS90725-60	2	SCREW, HEX HD, .375-16 UNC - 2A X 1.00 L		STEEL
3			MS35829-11A	1	HINGE, 2.00 OPEN, .075 THK, .188 DIA PIN		AL ALY
2			6061-T4	1	SHEET, .125 STK	ASTM B209	AL ALY
1			6061-T4	1	SHEET, .125 STK	ASTM B209	AL ALY

UNLESS OTHERWISE SPECIFIED DIM/TOLERANCES ARE: .001 IN.
ONE PLACE (.1) ± .06
TWO PLACE (.1X) ± .06
THREE PLACE (.1XX) ± .030
ANGLES ± .5°

DO NOT SCALE THIS DRAWING
FOR INTERPRETATION OF DRAWING ODD-STD-100 APPLIES

REMOVE BURRS AND BREAK SHARP EDGES TO SHARP EDGES TO FILLET RADIUS TO

MATERIAL

DESIGN APPROVAL
DATE

APPROVED FOR PROCUREMENT
DATE

U.S. ARMY
BELVOIR RESEARCH, DEVELOPMENT, AND ENGINEERING CENTER
FORT BELVOIR, VIRGINIA 22060-5804

LOCKER,
CREW SERVED WEAPONS,
.50 CALIBER MACHINE GUN

SIZE A1
CAGE 97403
SCALE 3"=1'-0"

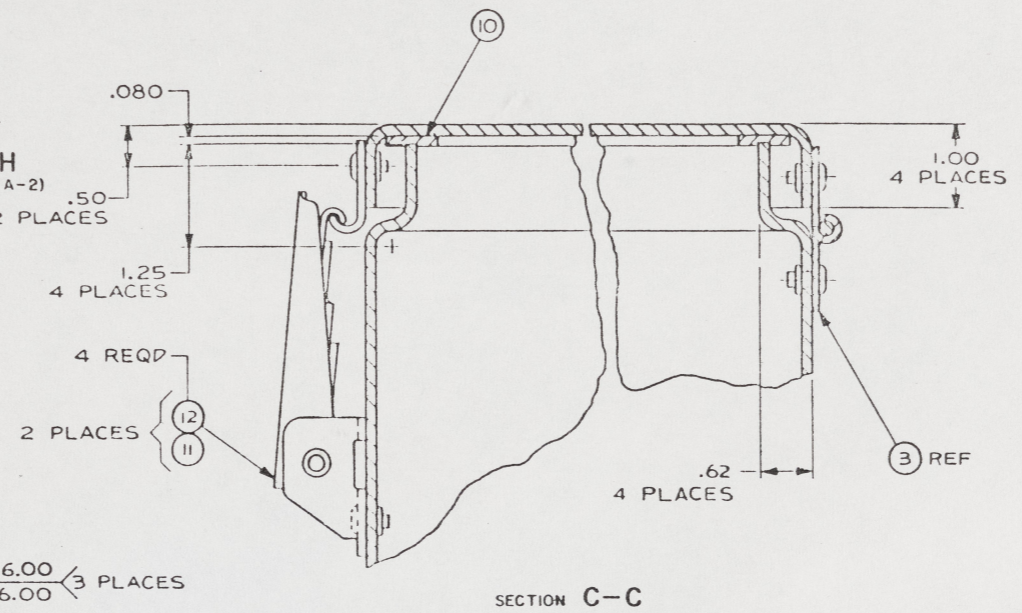
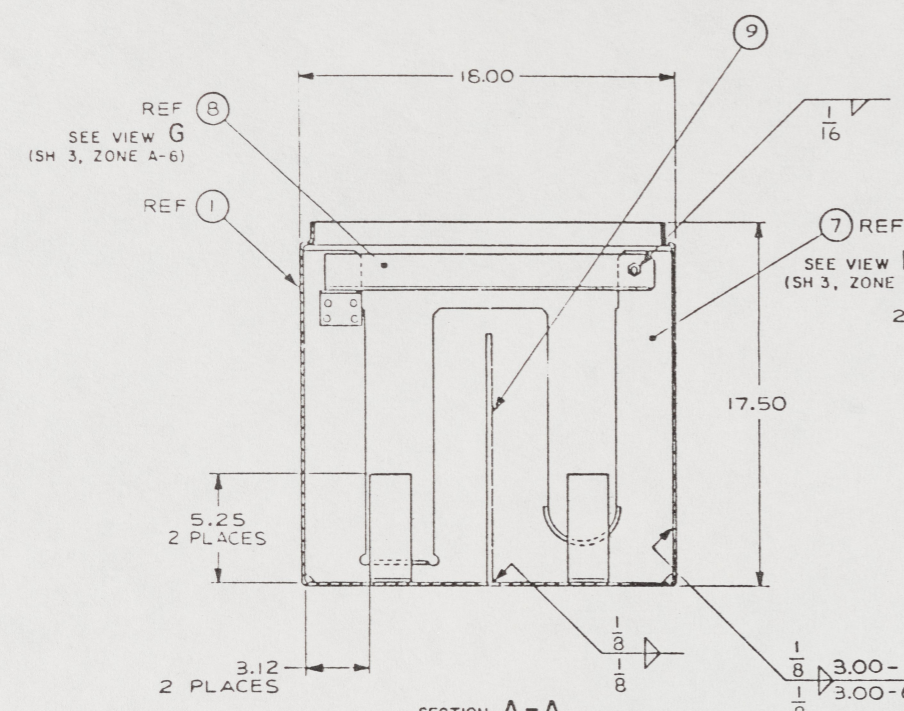
DATE 16 JUN 88
CHECKED BY CT PAB
DATE 15 JUN 88

CONTRACT NO.

DWG NO. 13226E9480
SHEET 1 OF 3

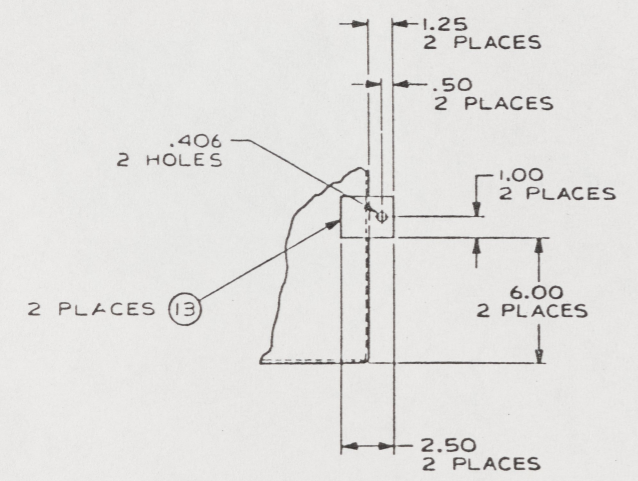
109

REVISIONS				
ZONE	LTR	DESCRIPTION	DATE	APPROVED

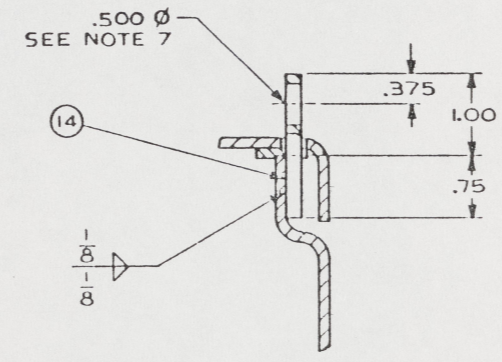


SECTION A-A
(SH 1, ZONE C-5)
ROTATED 90° CW
SECTION B-B
(SH 1, ZONE C-7)
ROTATED 90° CCW
ITEMS NOT SHOWN
OMITTED FOR CLARITY

SECTION C-C
(SH 1, ZONE A-7)
SCALE FULL
ROTATED 90° CW



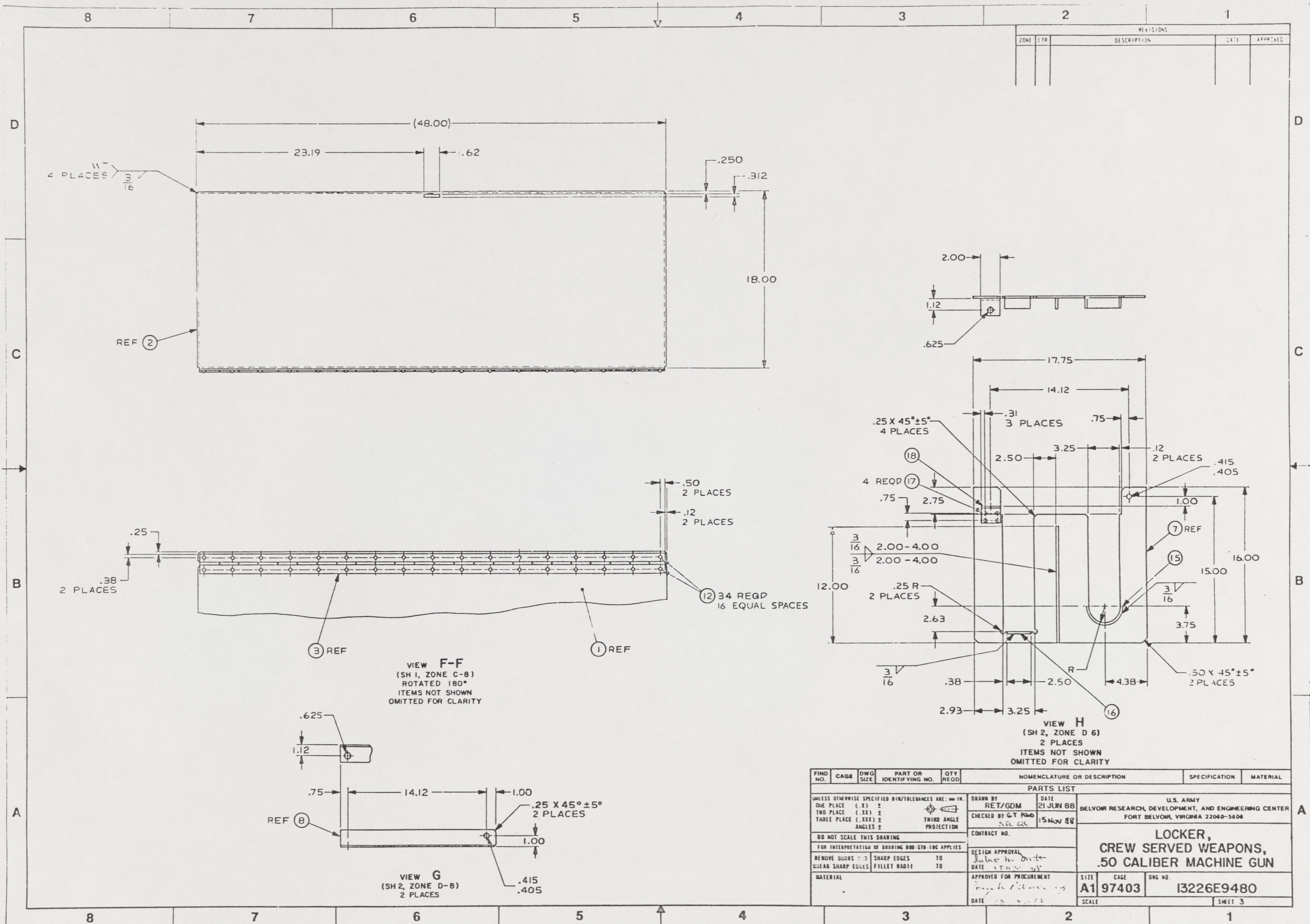
VIEW D-D
(SH 1, ZONE C-7)
ROTATED 180°



SECTION E-E
(SH 1, ZONE B-6)
SCALE FULL
ROTATED 90° CCW

FIND NO.	CAGE	DWG SIZE	PART OR IDENTIFYING NO.	QTY REQD	NOMENCLATURE OR DESCRIPTION	SPECIFICATION	MATERIAL
PARTS LIST							
UNLESS OTHERWISE SPECIFIED DIM/TOLERANCES ARE: .001 IN.					DRAWN BY: HZG/GDM DATE: 20 JUN 88		
ONE PLACE (.1)					CHECKED BY: GY PGM DATE: 15 JUN 88		
TWO PLACE (.01)					THIRD ANGLE PROJECTION		
THREE PLACE (.001)					CONTRACT NO.		
ANGLES					DESIGN APPROVAL: [Signature] DATE: 15 JUN 88		
DO NOT SCALE THIS DRAWING					APPROVED FOR PROCUREMENT: [Signature] DATE: 15 JUN 88		
FOR INTERPRETATION OF DRAWING 800-STD-108 APPLIES					U.S. ARMY BELVOIR RESEARCH, DEVELOPMENT, AND ENGINEERING CENTER FORT BELVOIR, VIRGINIA 22060-3604		
REMOVE BURRS AND SHARP EDGES TO					LOCKER, CREW SERVED WEAPONS, .50 CALIBER MACHINE GUN		
BREAK SHARP EDGES FILLET RADIUS TO							
MATERIAL					SIZE: A1	CAGE: 97403	DWG NO.: 13226E9480
					SCALE:	SHEET 2	

110



REVISIONS				
ZONE	LTR	DESCRIPTION	DATE	APPROVED

FIND NO.	CAGE	DWG SIZE	PART OR IDENTIFYING NO.	QTY REQD	NOMENCLATURE OR DESCRIPTION	SPECIFICATION	MATERIAL
PARTS LIST							
UNLESS OTHERWISE SPECIFIED DIM/TOLERANCES ARE: .000 IN.					DRAWN BY	DATE	
ONE PLACE (.1) ±					RET/GDM	21 JUN 88	
TWO PLACE (.01) ±					CHECKED BY	DATE	
THREE PLACE (.001) ±					G.T. PAND	15 NOV 88	
ANGLES ±					CONTRACT NO.		
DO NOT SCALE THIS DRAWING							
FOR INTERPRETATION OF DRAWING DIM-STD-106 APPLIES							
REMOVE BURRS AND SHARP EDGES TO				DESIGN APPROVAL			
BREAK SHARP EDGES FILLET RADIUS TO				DATE			
MATERIAL				APPROVED FOR PROCUREMENT			
				DATE			
SIZE		CAGE		DWG NO.			
A1		97403		I3226E9480			
SCALE		SHEET 3					

111