

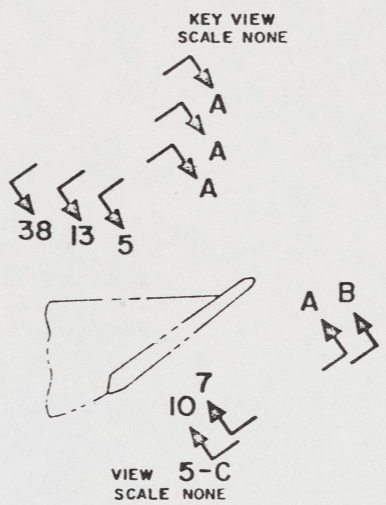
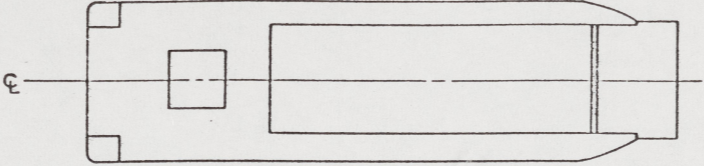
NOTES:

- THIS DRAWING HAS BEEN DEVELOPED FROM SHIPCHECK INFORMATION FOR ACCOMPLISHING THE INSTALLATION OF RHINO-HORN SOCKET ASSY TO LCM-8, MOD 1.
- ALL FABRICATION WELDING AND INSPECTION TO BE IN ACCORDANCE WITH NAVSEA 0900-LP-014-5010, WELD SIZES BASED ON USE OF AWS A5.1, CLASS E7018 ELECTRODES FOR LC STEEL TO LC STEEL.
- EQUIPMENT AND WORKMANSHIP SHALL BE IN ACCORDANCE WITH USCG AND ABS REGULATIONS.
- REPAIR ALL PAINT DAMAGED BY THIS INSTALLATION AND PAINT ALL NEW STEEL IN ACCORDANCE WITH U.S. ARMY TECHNICAL BULLETIN TB43-0144.
- MATERIAL ORDERED ON THIS DRAWING IS NOT INTENDED TO BE RESTRICTIVE. SUBSTITUTION OF EQUAL QUALITY MATERIAL MAY BE MADE EXCEPT FOR ITEMS MARKED "GFE".
- SLIGHT DEVIATIONS FROM DIMENSIONS SHOWN ARE PERMISSIBLE TO SUIT ACTUAL CONDITIONS FOUND ABOARD THE VESSEL.
- COMPONENTS SHOWN BY SOLID, HEAVY LINES ARE NEW, ORDERED AND INSTALLED IN ACCORDANCE WITH THIS DRAWING. LIGHT, BROKEN OR PHANTOM LINES INDICATE COMPONENTS EXISTING OR ORDERED ON AND INSTALLED BY DRAWING REFERENCES AS NOTED.
- SIZES INDICATED IN BILL OF MATERIAL ARE SLIGHTLY OVERSIZED AND ARE FOR ORDERING PURPOSES ONLY. THESE ITEMS SHALL BE CUT TO FIT CONDITIONS FOUND ABOARD THE VESSEL.
- THRU HOLES FOR TUBE, FIND NO. 13, IN PLATES, FIND NO. 7 AND 8, SHALL BE IN-LINE TO WITHIN 1/16".
- RADIUS IS ELLIPTICAL AND WILL HAVE TO BE ALTERED TO CONFORM TO THE OUTSIDE DIAMETER OF TUBE, FIND NO. 10, DURING ASSEMBLY. SEE VIEW 18-B.
- EDGE OF PLATE, FIND NO. 28, SHALL BE ROLLED TO CONFORM TO ARC OF RAMP EDGE.

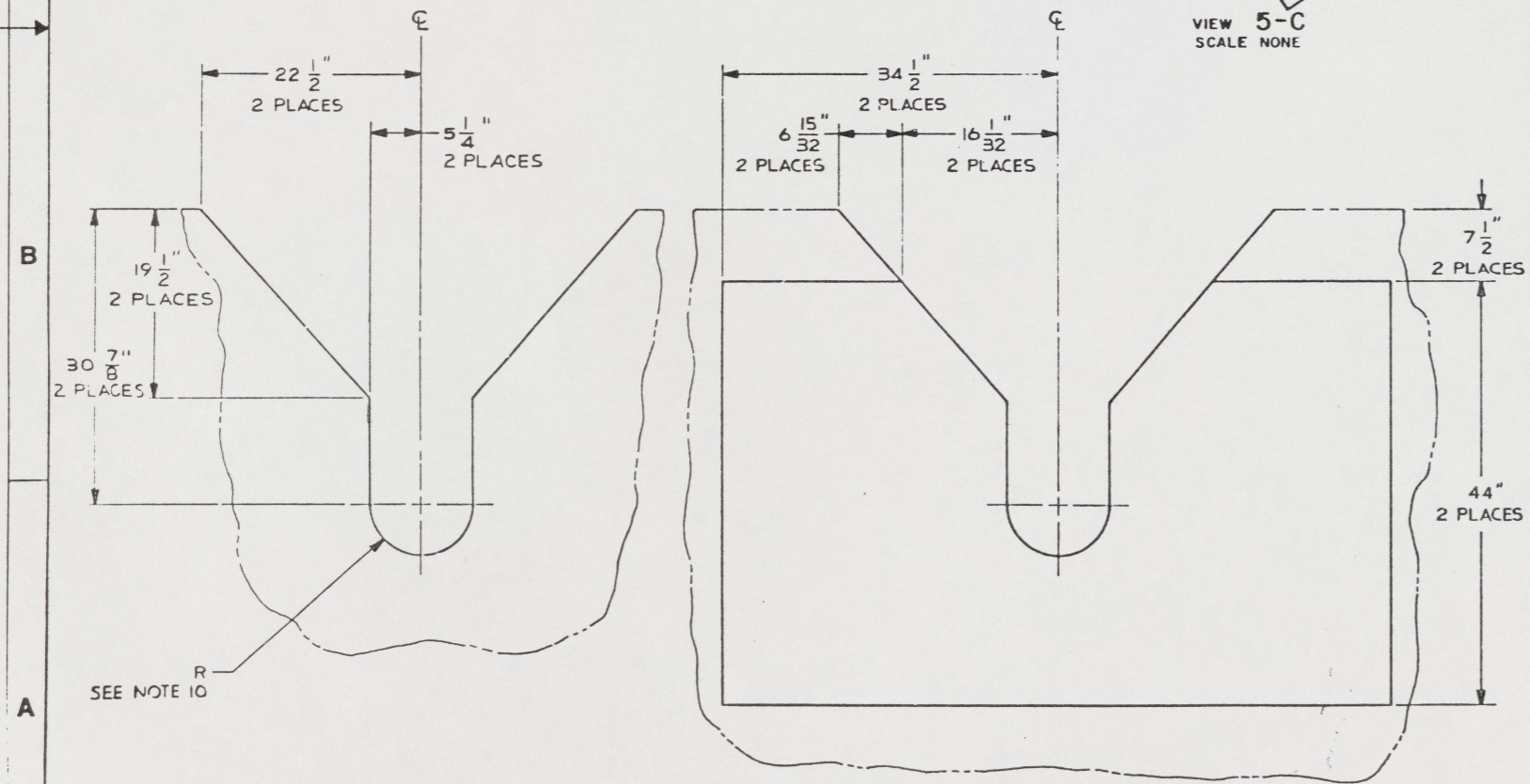
REFERENCE DRAWINGS APPLICABLE TO HULL NUMBERS 8540 THRU 8560 AND 8580 THRU 8618		
NO.	DRAWING NO.	TITLE
1	145-4510974	STRUCTURAL RAMP DETAILS

REFERENCE DRAWINGS APPLICABLE TO HULL NUMBERS 8520 THRU 8539		
NO.	DRAWING NO.	TITLE
1	145-2534227	STRUCTURAL RAMP DETAILS

SHEETS						STATUS OF REVISIONS		
6	5	4	3	2	1	DESCRIPTION	DATE	APPROVED



THIS DRAWING APPLIES TO HULL NUMBERS 8520 THROUGH 8560 AND 8580 THROUGH 8618 ONLY



YARD	FIND NO.	CAGE	DWG SIZE	PART OR IDENTIFYING NO.	QTY REQD	NOMENCLATURE OR DESCRIPTION	SPECIFICATION	MATERIAL
28				1		PLATE, 5/16" X 37" X 48"	ASTM A36	STEEL
27				2		PLATE, 5/16" X 12" X 21 1/4" L	ASTM A36	STEEL
26	CC-3701-1			2		SLEEVE, BEARING, 3 3/4" OD X 3" ID (OILITE)	COML	BRONZE
25	S-3094			2		SPRING, HELICAL COMPRESSION, 2" OD (CENTURY)	COML	STEEL
24	MS35338-140			8		WASHER, LOCK-SPRING, 5/16" NOM DIA		CRES
23	MS51849-117			8		SCREW, MACHINE, HEX HD, SLOTTED, 5/16-18 UNC-2A X 7/8" L		STEEL
22				2		PLATE OR BAR, 1/2 X 5" OD	ASTM A36	STEEL
21	CC-3701-1			2		SLEEVE, BEARING, 3 3/4" OD X 3" ID (OILITE)	COML	BRONZE
20	MS35338-51			2		WASHER, LOCK-SPRING, HELICAL, 3/4" NOM DIA		STEEL
19	MS35307-499			2		SCREW, CAP, HEX HD, 3/4-10 UNC-2A X 5" L		CRES
18	17-4PH, COND A			2		BAR, RND, 3" DIA X 11 3/4" L, 40-45 Rc	AMS 5643	CRES
17	MS35338-44			20		WASHER, LOCK-SPRING, 1/4" NOM DIA		STEEL
16	MS90725-6			20		SCREW, CAP, HEX HD, 1/4-20 UNC-2A X 3/4" L		STEEL
15				2		PLATE, 1/8 X 8 1/4" X 1'-6" L	ASTM A36	STEEL
14	MS27127-16			20		NUT, WELDING, HEX, 1/4-20 UNC-2B		STEEL
13	UNS G10260			2		TUBING, RND, MECH, 5" OD X 5/8" WALL X 1'-0 7/8" L	ASTM A519	STEEL
12				2		PLATE, 3/16 X 11 15/16" X 2'-1" L	ASTM A36	STEEL
11				1		PLATE, 3/16 X 11 15/16" X 1'-6 1/2" L	ASTM A36	STEEL
10	UNS G10260			1		TUBING, RND, MECH, 10 1/2" X 1/4" WALL X 1'-1 5/16" L	ASTM A519	STEEL
9				2		PLATE, 3/16 X 11 5/16" X 12 1/4" L	ASTM A36	STEEL
8				2		PLATE, 3/16 X 11 15/16" X 46 1/4" L	ASTM A36	STEEL
7				2		PLATE, 3/16 X 10 7/16" X 10 13/16" L	ASTM A36	STEEL
6				2		PLATE, 3/16 X 11 5/16" X 17 5/16" L	ASTM A36	STEEL
5				2		PLATE, 3/16 X 10 9/16" X 17 5/16" L	ASTM A36	STEEL
4				2		PLATE, 3/16 X 8 11/16" X 10 9/16" L	ASTM A36	STEEL
3				2		PLATE, 1/2 X 10 3/8" X 26 13/16" L	ASTM A36	STEEL
2				2		PLATE, 1/4 X 10 7/8" X 11 3/8" L	ASTM A36	STEEL
1				1		PLATE, 3/16 X 44 1/4" X 5'-9" L	ASTM A36	STEEL

UNLESS OTHERWISE SPECIFIED DIM/TOLERANCES ARE: .001 IN.

ONE PLACE (.1) ± —
TWO PLACE (.01) ± —
THREE PLACE (.001) ± —
ANGLES ± —

FOR INTERPRETATION OF DRAWING ODD-STD-100 APPLIES

REMOVE BURRS AND BREAK SHARP EDGES — TO —
SHARP EDGES — TO —
FILLET RADII — TO —

MATERIAL —

DO NOT SCALE THIS DRAWING

DATE 23 NOV 87
DRAWN BY AB/HA
CHECKED BY G.T. P...
DATE 15 NOV 88

CONTRACT NO. —

DESIGN APPROVAL
DATE 12 NOV 88

APPROVED FOR PROCUREMENT
DATE 12 NOV 88

U.S. ARMY
BELVOIR RESEARCH, DEVELOPMENT, AND ENGINEERING CENTER
FORT BELVOIR, VIRGINIA 22060-8608

LCM-8, MOD 1,
RHINO-HORN SOCKET
INSTALLATION

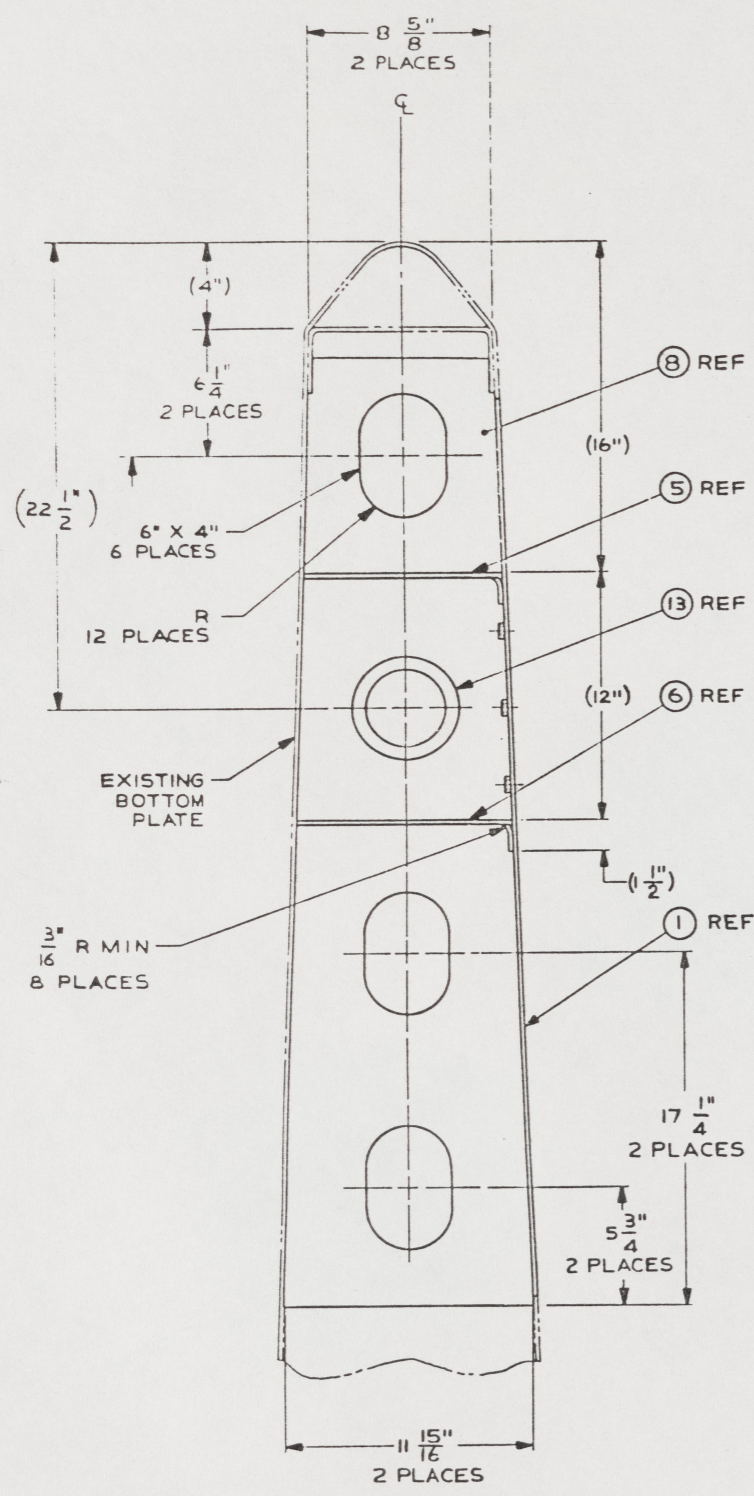
SIZE A1
CAGE 97403
BGC NO. 13226E9478

SCALE 1/2" = 1'-0"

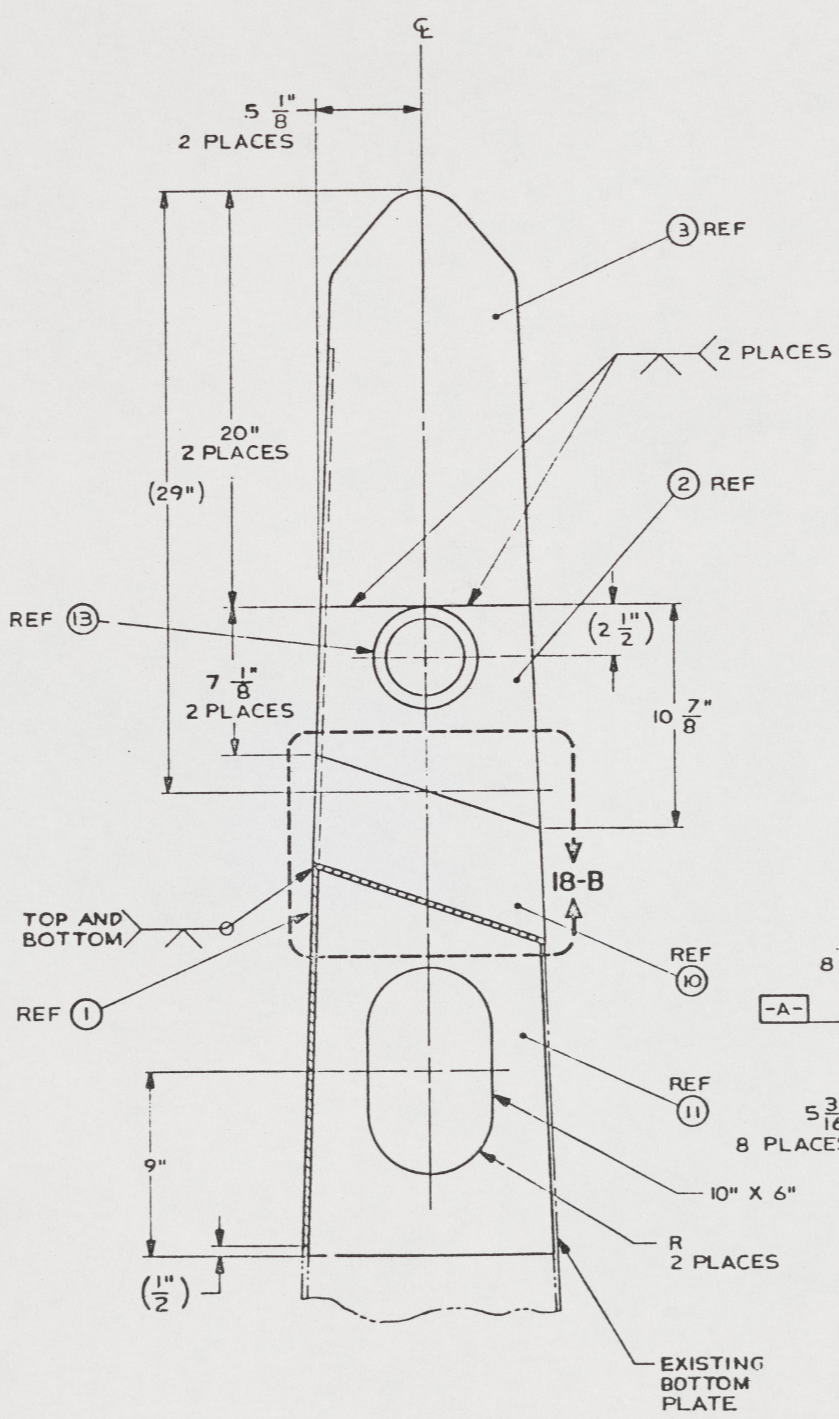
SHEET 1 OF 6

106
102

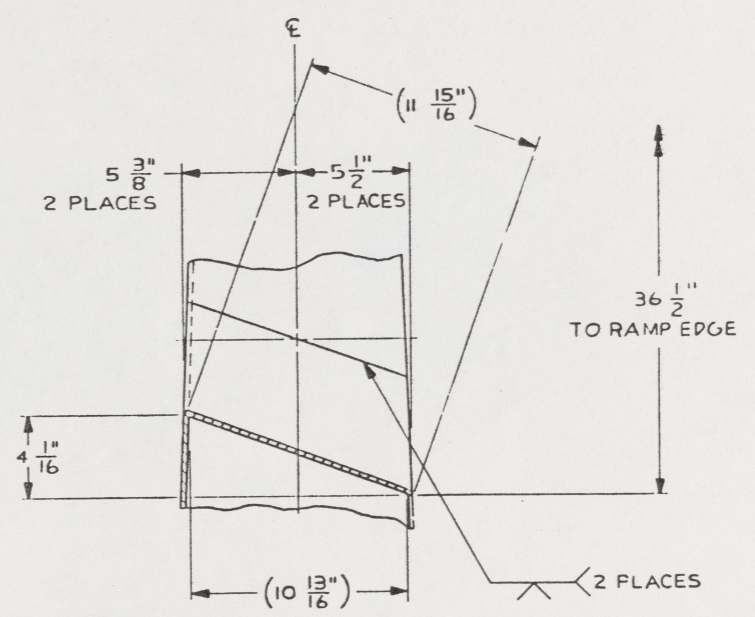
REVISIONS				
ZONE	LTR	DESCRIPTION	DATE	APPROVED



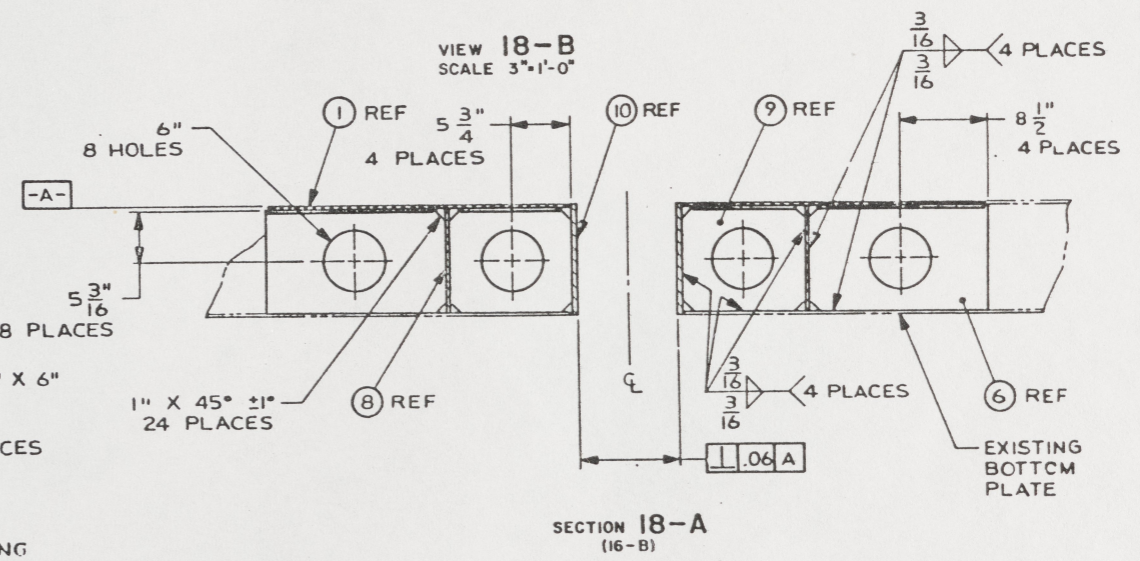
VIEW 23-A
(14-C)
SCALE 3"=1'-0"



SECTION 21-A
(13-C)
SCALE 3"=1'-0"



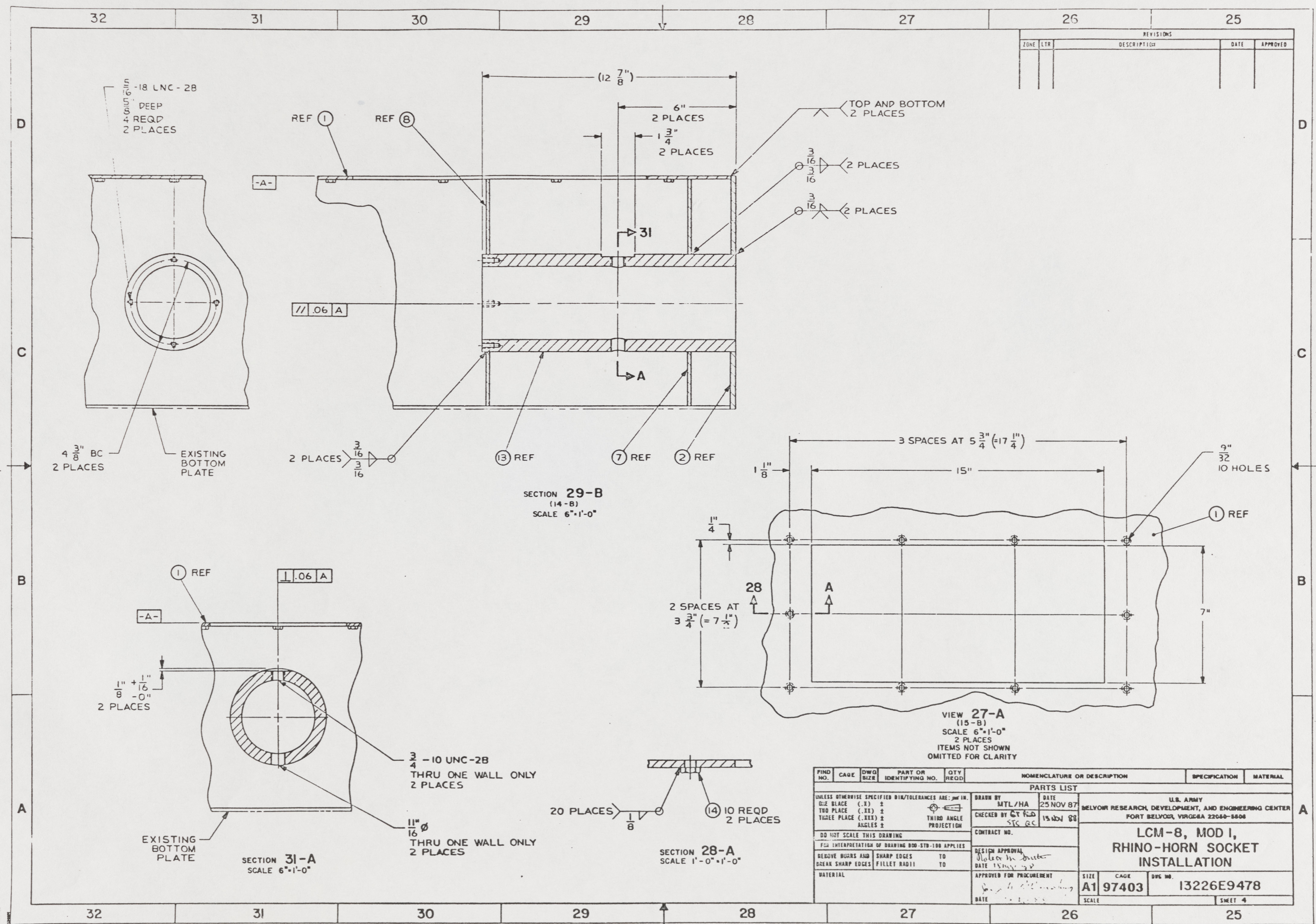
VIEW 18-B
SCALE 3"=1'-0"



SECTION 18-A
(16-B)

FIND NO.	QTY	CAGE	DWG	PART OR IDENTIFYING NO.	QTY	NOMENCLATURE OR DESCRIPTION	SPECIFICATION	MATERIAL
UNLESS OTHERWISE SPECIFIED DIM/TOLERANCES ARE: .001 IN. THIRD ANGLE PROJECTION								
PARTS LIST			DRAWN BY AB/HA DATE 3 NOV 87			U.S. ARMY		
ONE PLACE (.1) 1			CHECKED BY GT PROB DATE 15 NOV 88			BELVOIR RESEARCH, DEVELOPMENT, AND ENGINEERING CENTER		
TWO PLACE (.1X) 2			CONTRACT NO.			FORT BELVOIR, VIRGINIA 22060-8608		
THREE PLACE (.1XX) 2			DESIGN APPROVAL			LCM-8, MOD 1,		
ANGLES 2			DATE 15 NOV 88			RHINO-HORN SOCKET		
DO NOT SCALE THIS DRAWING			APPROVED FOR PROCUREMENT			INSTALLATION		
FOR INTERPRETATION OF DRAWING DDG-STD-100 APPLIES			DATE 15 NOV 88			SIZE		
REMOVE BURS AND SHARP EDGES TO			DATE 15 NOV 88			A1 97403		
BREAK SHARP EDGES FILLET RADIUS TO			DATE 15 NOV 88			SHEET 3		
MATERIAL			SCALE			13226E9478		

108
104



REVISIONS				
ZONE	LTR	DESCRIPTION	DATE	APPROVED

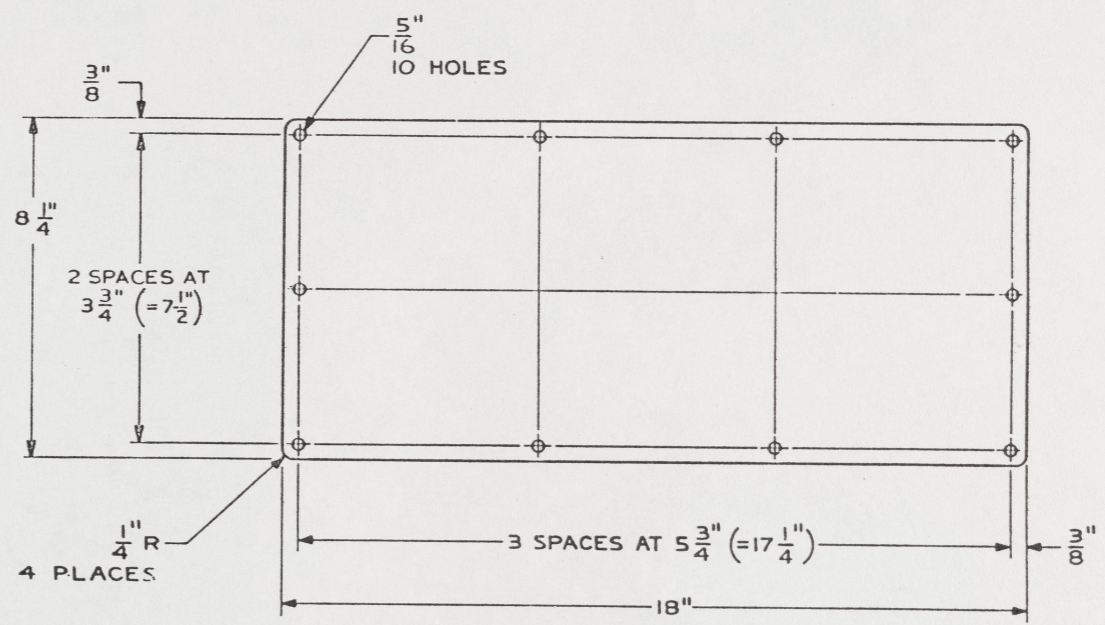
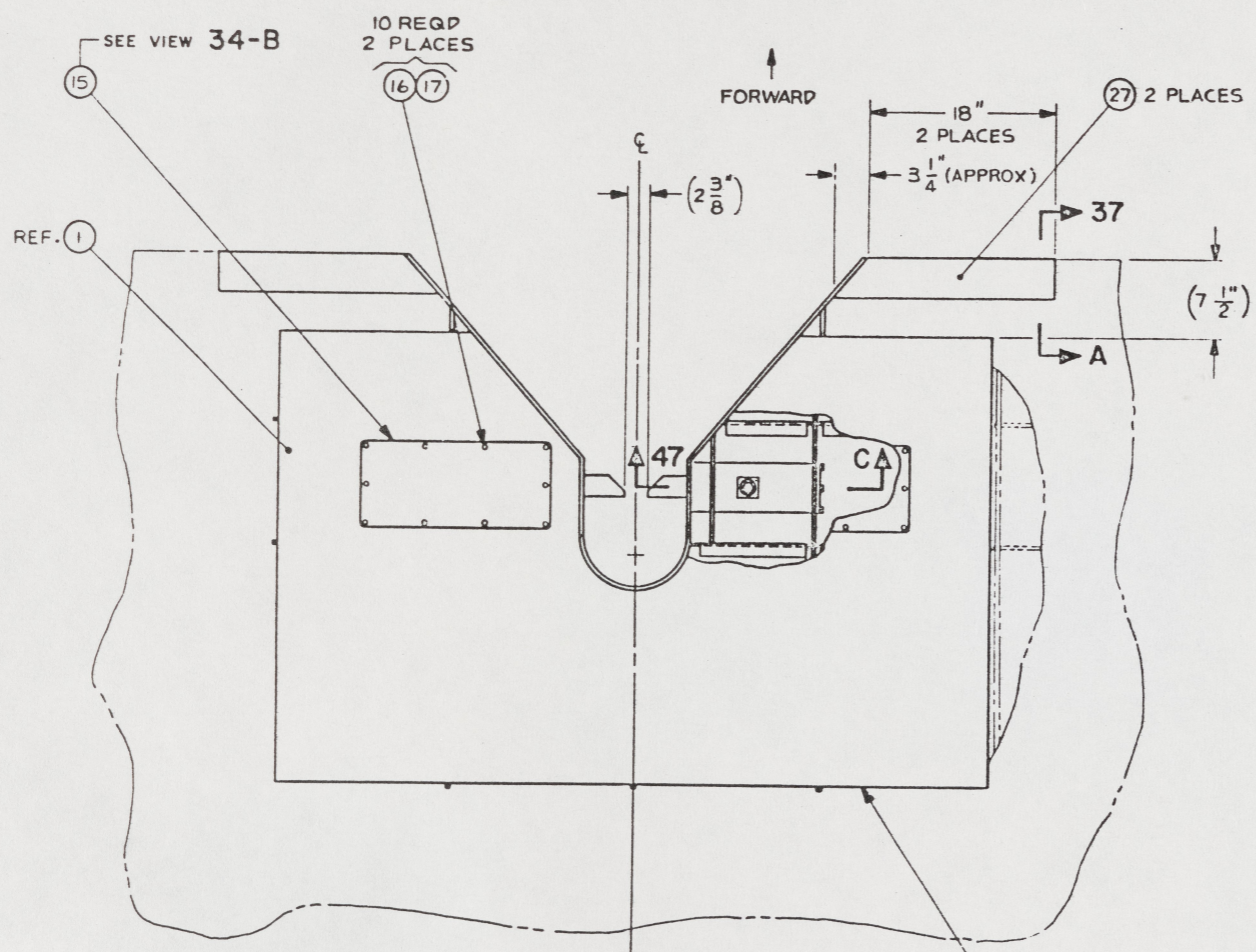
FIND NO.	CAGE	DWG SIZE	PART OR IDENTIFYING NO.	QTY REQD	NOMENCLATURE OR DESCRIPTION	SPECIFICATION	MATERIAL
UNLESS OTHERWISE SPECIFIED DIM/TOLERANCES ARE: \pm IN.							
ONE PLACE	(.1)	\pm	DRAWN BY MTL/HA		DATE 25 NOV 87	U.S. ARMY	
TWO PLACE	(.01)	\pm	CHECKED BY ST/RS		DATE 15 NOV 88	BELVOIR RESEARCH, DEVELOPMENT, AND ENGINEERING CENTER	
THREE PLACE	(.001)	\pm	THIRD ANGLE PROJECTION		CONTRACT NO.	FORT BELVOIR, VIRGINIA 22060-8608	
ANGLES	\pm		DO NOT SCALE THIS DRAWING		DESIGN APPROVAL	LCM-8, MOD 1, RHINO-HORN SOCKET INSTALLATION	
FOR INTERPRETATION OF DRAWING 800-STD-100 APPLIES							
REMOVE BURRS AND BREAK SHARP EDGES	TO	SHARP EDGES TO	TO	DATE 15 NOV 88	APPROVED FOR PROCUREMENT	SIZE A1	CAGE 97403
MATERIAL		FILLET RADIUS		DATE	DATE	DWG NO. 13226E9478	SHEET 4

109
105

38

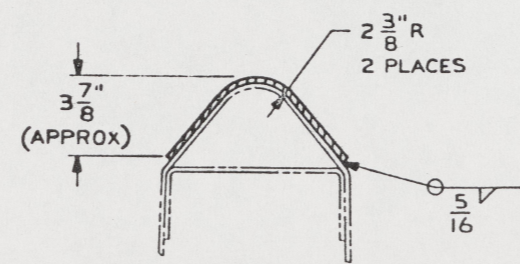
40 39 38 37 36 35 34 33

REVISIONS				
ZONE	LTR	DESCRIPTION	DATE	APPROVED



VIEW 34-B
SCALE 6"=1'-0"
TOP COVER PLATE
2 PLACES

VIEW 38-A
(S-C)
ROTATED 55° CCW



SECTION 37-A
SCALE 3"=1'-0"
2 PLACES

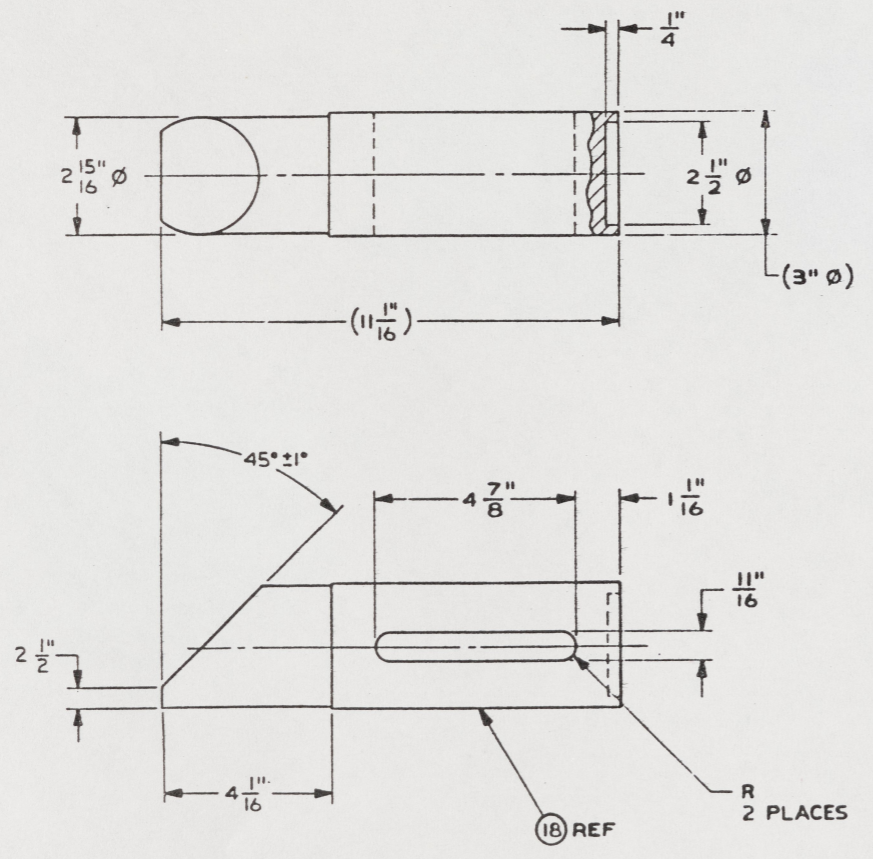
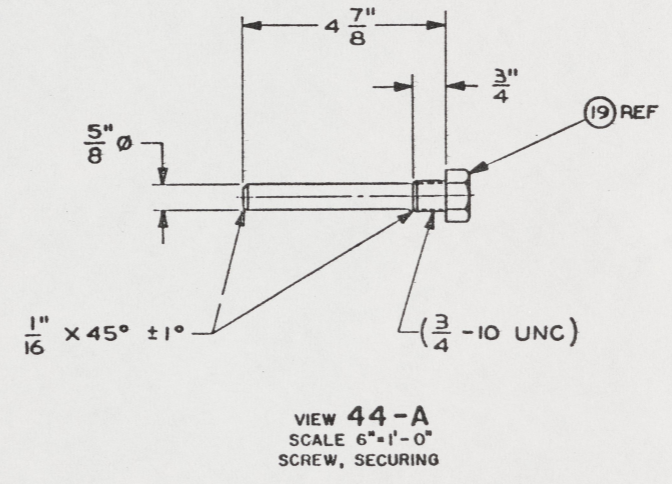
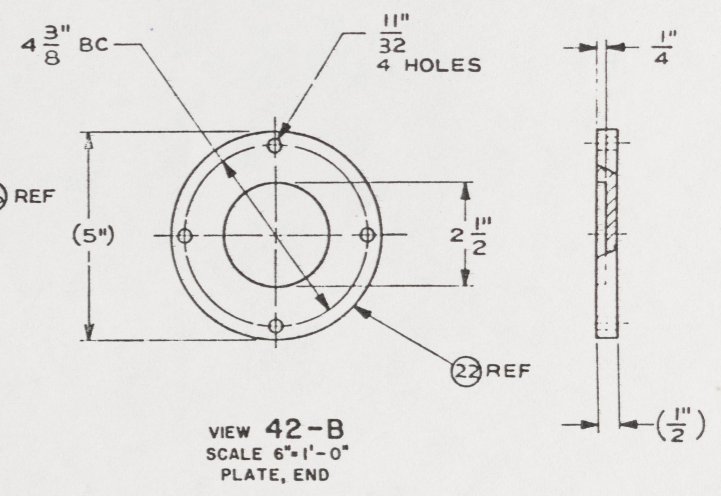
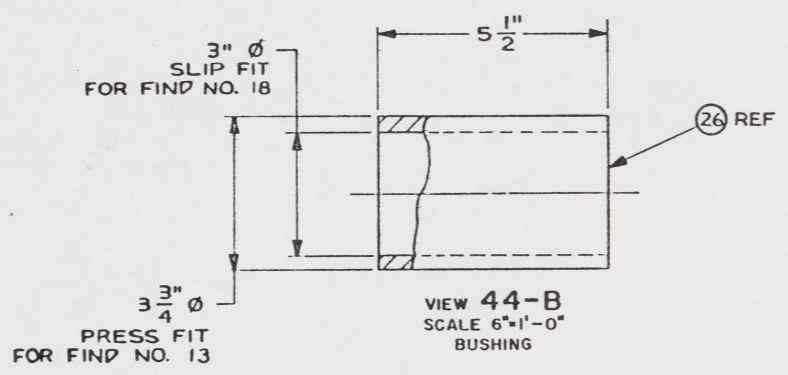
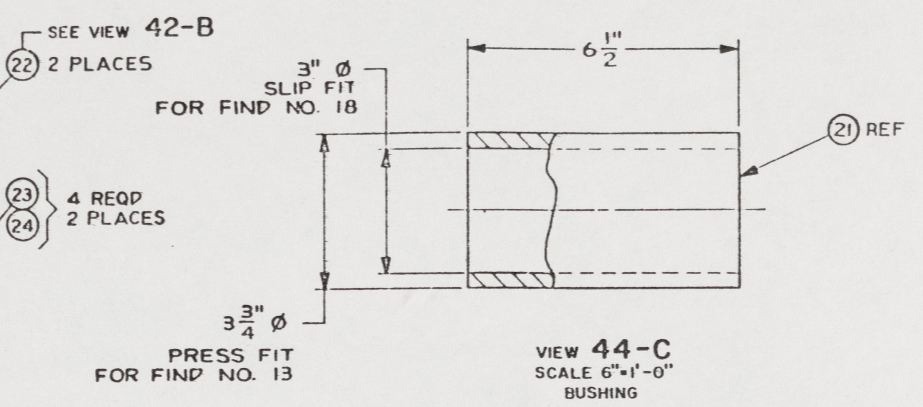
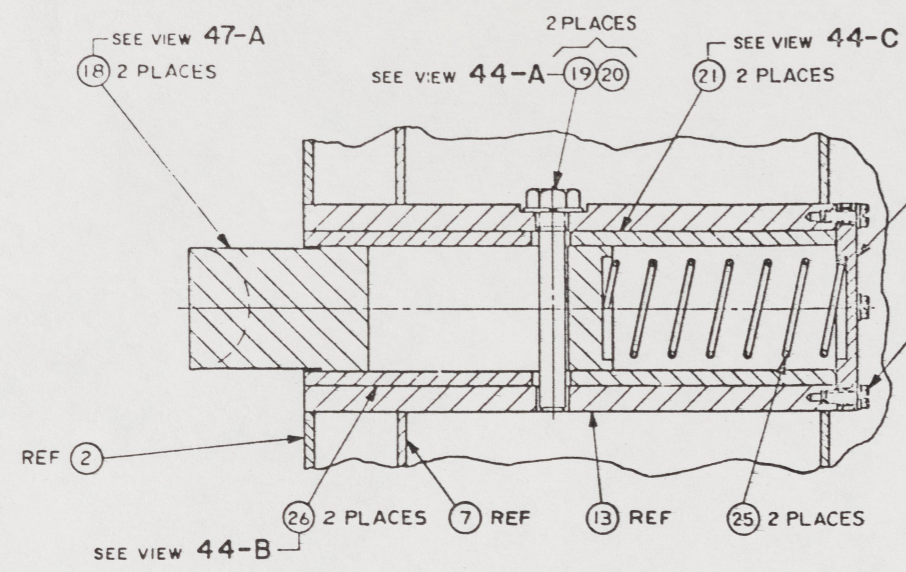
106

PIND NO.	CAGE	DWG SIZE	PART OR IDENTIFYING NO.	QTY REQD	NOMENCLATURE OR DESCRIPTION	SPECIFICATION	MATERIAL
PARTS LIST							
UNLESS OTHERWISE SPECIFIED DIM/TOLERANCES ARE: .001 IN.					DRWN BY	U.S. ARMY	
ONE PLACE (.X) ±					JAP/HA	BELVOIR RESEARCH, DEVELOPMENT, AND ENGINEERING CENTER	
TWO PLACE (.XX) ±					DATE	PORT BELVOIR, VIRGINIA 22680-8406	
THREE PLACE (.XXX) ±					15 NOV 85		
ANGLES ±					CHECKED BY		
TWO ANGLE					SJE/RC		
PROJECTION					CONTRACT NO.		
DO NOT SCALE THIS DRAWING					DESIGN APPROVAL		
FOR INTERPRETATION OF DRAWING DOD-STD-100 APPLIES					DATE		
REMOVE BURRS AND SHARP EDGES TO							
BREAK SHARP EDGES FILLET RADIUS TO							
MATERIAL					APPROVED FOR PROCUREMENT		
					DATE		
						SIZE	CAGE
						A1	97403
						SCALE	SOC NO.
							13226E9478
						SHEET 3	

40 39 38 37 36 35 34 33

48 47 46 45 44 43 42 41

ZONE		LTM		REVISIONS	DATE	APPROVED
				DESCRIPTION		



VIEW 47-A
SCALE 6"-1'-0"
PIN, KEEPER

FIND NO.	CAGE	DWG SIZE	PART OR IDENTIFYING NO.	QTY REQD	NOMENCLATURE OR DESCRIPTION	SPECIFICATION	MATERIAL
PARTS LIST							
UNLESS OTHERWISE SPECIFIED DIM/TOLERANCES ARE: \pm IN.		DRAWN BY HZG/HA		DATE 25NOV87	U.S. ARMY BELVOIR RESEARCH, DEVELOPMENT, AND ENGINEERING CENTER FORT BELVOIR, VIRGINIA 22060-6606		
ONE PLACE (.1)	TWO PLACE (.01)	THREE PLACE (.001)	ANGLES	THIRD ANGLE PROJECTION	CHECKED BY CT P000 SIC QC	DATE 15NOV 88	LCM-8, MOD I, RHINO-HORN SOCKET INSTALLATION
DO NOT SCALE THIS DRAWING				CONTRACT NO.			
FOR INTERPRETATION OF DRAWING 800-STD-100 APPLIES				DESIGN APPROVAL DATE 12NOV 87			
REMOVE BURRS AND BREAK SHARP EDGES				SHARP EDGES TO FILLET RADIUS TO			
MATERIAL				APPROVED FOR PROCUREMENT DATE 25 NOV 88			
		SIZE A1	CAGE 97403	SPEC NO. 13226E9478			
		SCALE		SHEET 6			

48 47 46 45 44 43 42 41

107