

50

NOTES:

1. THIS DRAWING HAS BEEN DEVELOPED FROM SHIPCHECK INFORMATION FOR ACCOMPLISHING THE INSTALLATION OF MODIFIED HYDRAULIC POWER STEERING SYSTEM TO LCM-8, MOD-1.
2. ALL FABRICATION WELDING AND INSPECTION TO BE IN ACCORDANCE WITH NAVSEA 0900-LP-014-5010, WELD SIZES BASED ON USE OF AWS A5.1, CLASS E7018 ELECTRODES FOR LC STEEL TO LC STEEL.
3. EQUIPMENT AND WORKMANSHIP SHALL BE IN ACCORDANCE WITH USCG AND ABS REGULATIONS.
4. REPAIR ALL PAINT DAMAGED BY THIS INSTALLATION AND PAINT ALL NEW STEEL IN ACCORDANCE WITH U.S. ARMY TECHNICAL BULLETIN TB43-0144.
5. RESERVOIR CAPACITY: 11.8 GAL.
6. INTERNAL SURFACES OF RESERVOIR SHALL BE TREATED IN ACCORDANCE WITH MIL-P-23236, TYPE 1, CLASS 3.

REFERENCE DRAWINGS APPLICABLE TO HULL NUMBERS 8540 THRU 8560 AND 8580 THRU 8618		
NO.	DRAWING NO.	TITLE
1	13226E9461	LCM-8, MOD-1, MODIF TO HYD POWER STEERING SYSTEM

REFERENCE DRAWINGS APPLICABLE TO HULL NUMBERS 8520 THRU 8539		
NO.	DRAWING NO.	TITLE
1	13229E2251	LCM-8, MOD-1, MODIF TO HYD POWER STEERING SYSTEM

STATUS OF REVISIONS					
SH	ZONE	LTR	DESCRIPTION	DATE	APPROVED
2					

NO.	QTY	DESCRIPTION	SPECIFICATION	MATERIAL		
M-15	1	PLATE, 7.65 LB, 10 5/8 X 12 5/8	ASTM A36	STEEL		
M-14	1	PLATE, 7.65 LB, 3 1/2 X 13 5/8	ASTM A36	STEEL		
M-13	1	PLATE, 7.65 LB, 1 1/2 X 13 5/8	ASTM A36	STEEL		
M-12	23619	HA-FS-5	2	STRAINER, SUCTION-5 GPM, 3/4 IPS (HYDROGRAFT)	COML	VARIOUS
M-11	23619	HC-120	1	FILLER BREATHER-2" DIA (HYDROGRAFT)	COML	VARIOUS
M-10	4	BAR, 5/16 X 1 1/4 X 2	ASTM A36	STEEL		
M-9	84256	ATS2-420	22	INSERT, THREADED, "TRIC-NUT", 1/4-20 UNC (AVIBANK)	COML	
M-8	2	PLATE, 7.65 LB, 1 1/4 X 5 1/4	ASTM A36	STEEL		
M-7	1	MIBC510	1	SHEET, 1/8 X 6 3/4 X 13	ASTM D2000	RUBBER
M-6	1	PLATE, 7.65 LB, 6 3/4 X 13	ASTM A36	STEEL		
M-5	2	PLATE, 7.65 LB, 13 5/8 X 13 5/8	ASTM A36	STEEL		
M-4	1	PLATE, 7.65 LB, 13 5/8 X 50 3/4	ASTM A36	STEEL		
M-3	2	PLATE, 7.65 LB, 7 1/2 X 14	ASTM A36	STEEL		
M-2	23619	HSG-88	1	GAUGE, SIGHT, TEMP AND LEVEL (HYDROGRAFT)	COML	VARIOUS
M-1	MS90725-6	22	SCREW, CAP, HEX HD, 1/4-20 UNC-2A X 3/4 LG		STEEL	
F-2	3	COUPLING, 3/4 NON PIPE SIZE	ANSI B16.3	M. I.		
F-1	30780	3/4 DD-S	2	ELBOW, 90°, FEMALE, 3/4 IPS (PARKER)	COML	STEEL
P-2	2	PIPE, SCH 40, 3/4 IPS X 9 1/2 L	ASTM A53	STEEL		
P-1	30780	3/4 FF-S	2	NIPPLE, PIPE, 3/4 IPS (PARKER)	COML	STEEL

THIS DRAWING APPLIES
TO HULL NUMBERS
8520 THROUGH 8560 AND
8580 THROUGH 8618 ONLY

FIND NO.		CAGE	DWG	PART OR IDENTIFYING NO.	QTY	HEQD	NOMENCLATURE OR DESCRIPTION	SPECIFICATION	MATERIAL
PARTS LIST									
UNLESS OTHERWISE SPECIFIED DIM/TOLERANCES ARE: per IN.									
ONE PLACE (.1) ±									
TWO PLACE (.01) ±									
THREE PLACE (.001) ±									
ANGLES 2°									
THIRD ANGLE PROJECTION									
DO NOT SCALE THIS DRAWING									
FOR INTERPRETATION OF DRAWING DDG-STR-100 APPLIES									
REMOVE DIMS AND SHARP EDGES TO TO									
BREAK SHARP EDGES FILLET RADIUS TO TO									
MATERIAL									
DRAWN BY		DATE		DESIGN APPROVAL		U.S. ARMY			
JK/HA		18 AUG 87		DATE		BELVOR RESEARCH, DEVELOPMENT, AND ENGINEERING CENTER			
CHECKED BY		15 NOV 88		DATE		FORT BELVOR, VIRGINIA 22060-8406			
SJC/AC				DATE		LCM-8, MOD-1			
CONTRACT NO.				DATE		STEERING HYDRAULIC			
				DATE		RESERVOIR			
APPROVED FOR PROCUREMENT		DATE		DATE		SIZE			
DATE		DATE		DATE		A1			
						CAGE			
						97403			
						DWG NO.			
						13226E9477			
						SCALE NONE			
						SHEET 1 OF 2			

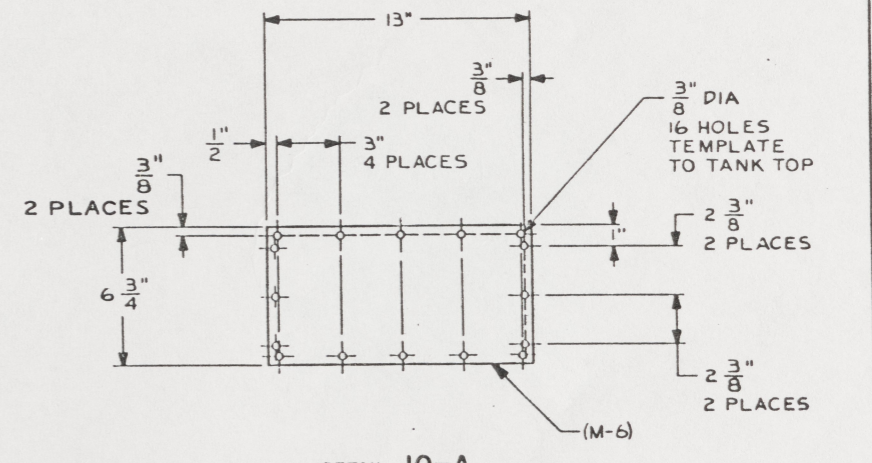
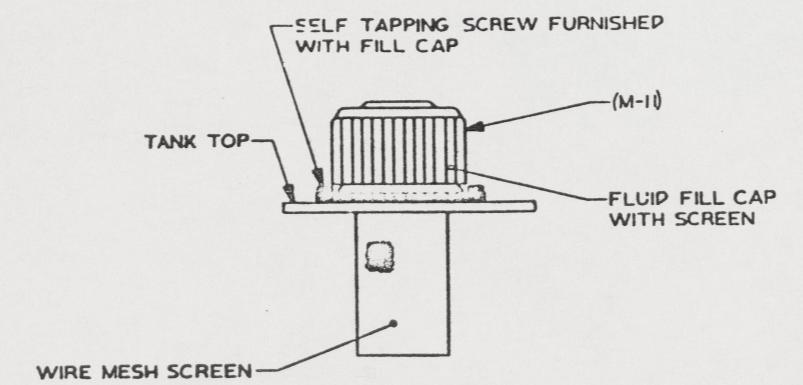
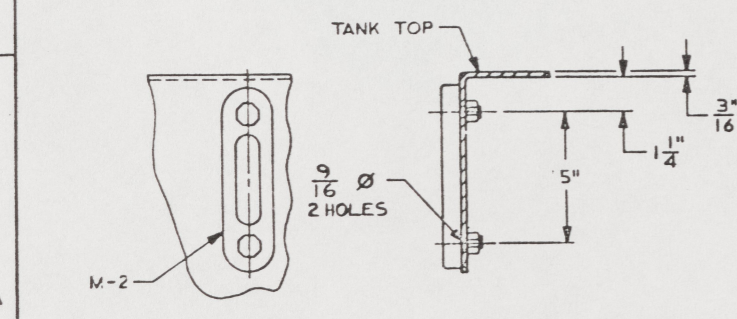
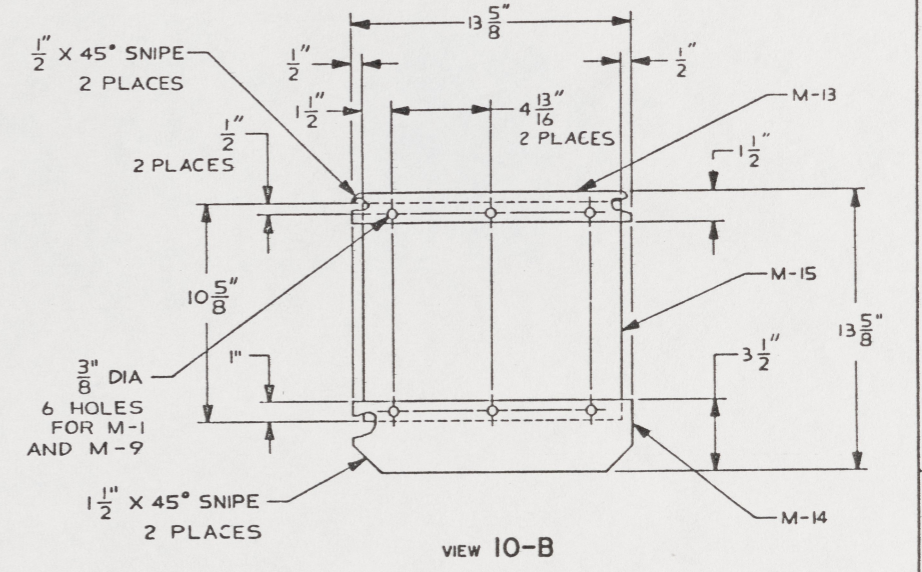
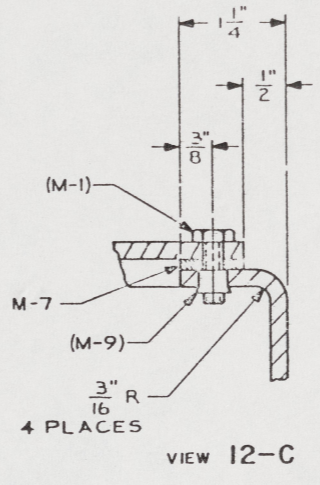
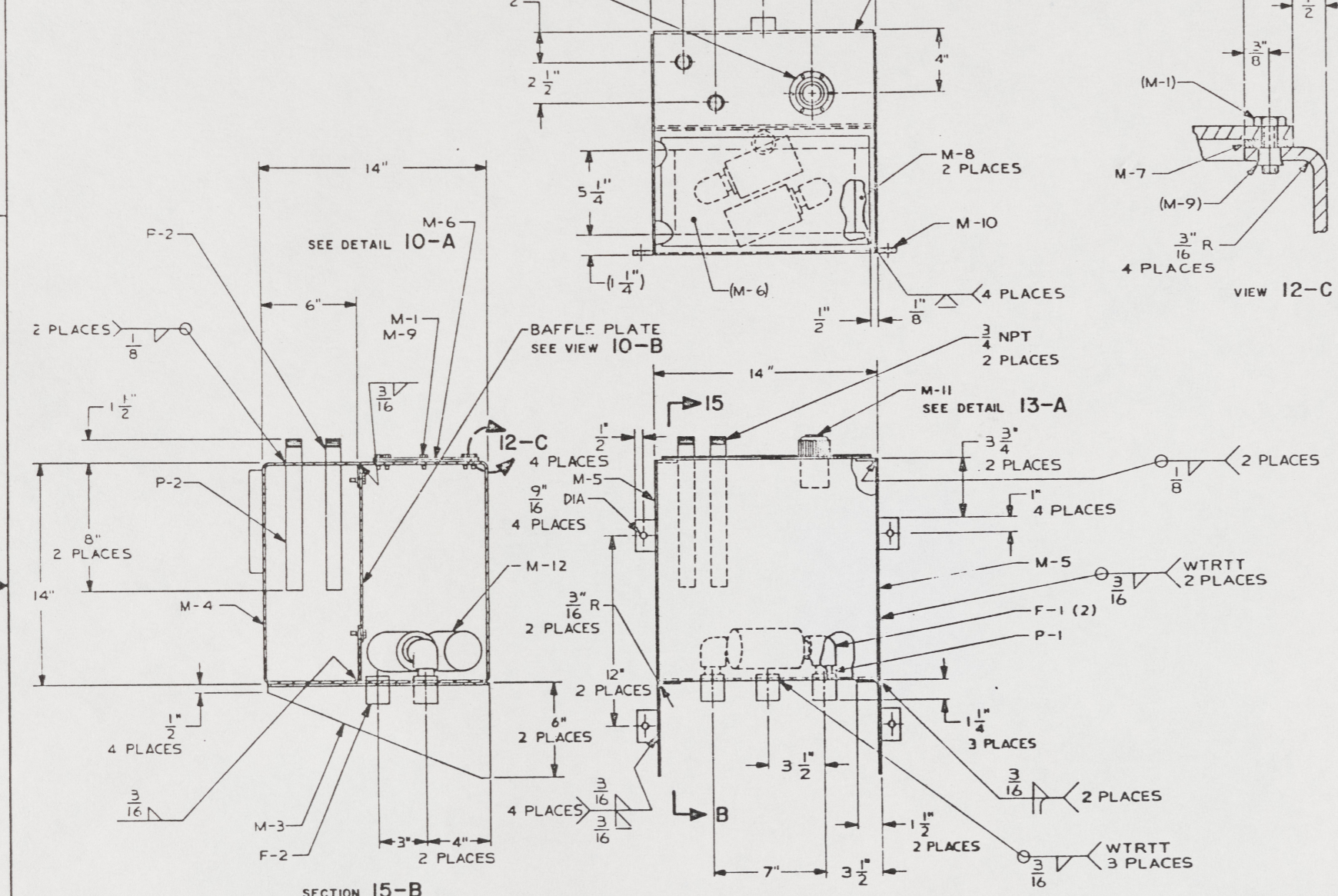
100
104

16 15 14 13 12 11 10 9

DRILL FOR #8-32
SELF TAPPING SCREWS
SUPPLIED WITH FIND NO. M-11
6 PLACES

MOUNT GAUGE, M-2
ON THIS SURFACE OF
RESERVOIR.
SEE DETAIL 15-A

ZONE	LET	DESCRIPTION	DATE	APPROVED



DETAIL 15-A
VIEW OF TEMPERATURE-LEVEL GAUGE CONN INTO HYDRAULIC RESERVOIR

DETAIL 13-A
VIEW OF FILLER/BREATHER

DETAIL 10-A
VIEW LAYOUT OF RESERVOIR INSPECTION PLATE

UNLESS OTHERWISE SPECIFIED DIM/TOLERANCES ARE:		DESIGNED BY: SLE	DATE: 7 FEB 55	U.S. ARMY MOBILITY EQUIPMENT RESEARCH AND DEVELOPMENT COMMAND FORT BELVOIR, VIRGINIA 22060	
ONE PLACE (1:1) 2	TWO PLACE (1:2) 2	CHECKED BY: C.V. Phob	DATE: 15 NOV 55	<p>LCM-8, MOD-1 STEERING HYDRAULIC RESERVOIR</p>	
THREE PLACE (1:3) 2	FOUR PLACE (1:4) 2	CONTRACT NO.	DATE: 15 NOV 55		
DO NOT SCALE THIS DRAWING		DESIGN APPROVAL: <i>Robert H. Smith</i>		SIZE: A1	CAGE: 97403
FOR REPRODUCTION BY UNAUTHORIZED PERSONS: REMOVE HEADS AND BREAK SHARP EDGES		DATE: 15 NOV 55		APPROPRIATE FOR PROCUREMENT	DATE: 15 NOV 55
SHARP EDGES TO		MATERIAL:		SCALE:	SHEET: 2

101
105