

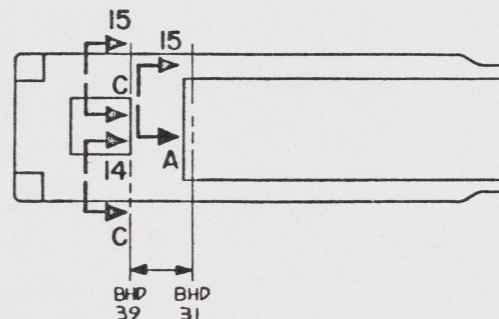
NOTES:

1. WELDING REQUIREMENTS SHALL BE IN ACCORDANCE WITH NAVSEA STD ITEM NO. 009-12.
2. TEMPLATE ALL WORK FROM LCM-8 AND EQUIPMENT.
3. EQUIPMENT AND WORKMANSHIP SHALL BE IN ACCORDANCE WITH USCG AND ABS REGULATIONS.
4. REPAIR ALL PAINT DAMAGED BY THIS INSTALLATION AND PAINT ALL NEW STEEL IN ACCORDANCE WITH U.S. ARMY TECHNICAL BULLETIN TB43-0144.
5. MATERIAL ORDERED ON THIS DRAWING IS NOT INTENDED TO BE RESTRICTIVE. SUBSTITUTION OF EQUAL QUALITY MATERIAL MAY BE MADE EXCEPT FOR ITEMS MARKED GFE.
6. SLIGHT DEVIATIONS FROM DIMENSIONS SHOWN ARE PERMISSIBLE TO SUIT ACTUAL CONDITIONS FOUND ABOARD THE VESSEL.
7. COMPONENTS SHOWN BY SOLID, HEAVY LINES ARE NEW AND ARE TO BE INSTALLED IN ACCORDANCE WITH THIS DRAWING. PHANTOM LINES INDICATE EXISTING COMPONENTS INSTALLED BY DRAWINGS REFERENCED AS NOTED.
8. PROJECTING CORNERS AND EDGES TO BE WELL ROUNDED OR PADDED TO PROTECT PERSONNEL.
9. PIPING SHALL BE SUITABLY SECURED BY PIPE HANGERS TO PREVENT VIBRATION AND PROTECT AGAINST DAMAGE IN ACCORDANCE WITH NAVSEA 804-1385781.
10. PIPING SYSTEMS SHALL BE THOROUGHLY CLEANED BY FLUSHING WITH THE MEDIUM FOR WHICH THE SYSTEM IS INTENDED.
11. ALL THREADED PIPE JOINTS SHALL BE ASSEMBLED USING ANTISEIZE TAPE. PIPING SHALL BE TESTED HYDROSTATICALLY AND ALL JOINTS INSPECTED FOR TIGHTNESS IN ACCORDANCE WITH LCM-8 INSTALLATION INSTRUCTIONS. 55-1505-217-1. TESTS SHALL BE CONDUCTED PRIOR TO PAINTING.
12. IDENTIFY PIPING SYSTEM IN ACCORDANCE WITH TB43-0144.

STATUS OF REVISIONS					
SH	ZONE	LTR	DESCRIPTION	DATE	APPROVED
2		A	SEE ECP NO. 90HE3309 AND 90HE3310	18 JUN 80	lms

REFERENCE DRAWINGS APPLICABLE TO HULL NUMBERS 8540 THRU 8560 AND 8580 THRU 8618		
NO.	DRAWING NO.	TITLE
1	13226E9448	LCM-8, MOD-1, ENGINE FOUNDATIONS
2	13226E9463	LCM-8, MOD-1, CONTROL CONSOLE MODIFICATIONS
3	13226E9476	LCM-8, MOD-1, POWER LIGHTING AND IC SYSTEM

REFERENCE DRAWINGS APPLICABLE TO HULL NUMBERS 8520 THRU 8539		
NO.	DRAWING NO.	TITLE
1	13226E9448	LCM-8, MOD-1, ENGINE FOUNDATIONS
2	13229E2254	LCM-8, MOD-1, CONTROL CONSOLE MODIFICATIONS
3	13226E9476	LCM-8, MOD-1, POWER LIGHTING AND IC SYSTEM



KEY PLAN 5-B

YARD	NO.	QTY	DESCRIPTION	COMPL.	MATERIAL			
YARD	M-8	24161	BCIT-BRFJX 2 HOSE ASSEMBLY, 1/2" ID HOSE WITH 1/2" MALE NPTF X 1/2"	COML	VARIOUS			
YARD			-BRMP-15 FEMALE NPTF SWIVEL, 15" L (GATES)					
YARD	M-7		MS35649-2252 16 NUT, PLAIN, HEX, 1/4-20 UNC-2B		STEEL			
YARD	M-6	80996	FIG. 120 4 U-BOLT, 1/4" ROD X 1/2" PIPE (GRINWELL)	COML	STEEL			
YARD	M-5		4 BAR, 3/16" X 1 1/4" X 2" L		ASTM A36			
YARD	M-4	01276	FDS6-1100 4 COUPLING, QUICK DISCONNECT, 1/2" NPT PORT (AERODQUIP)	COML	STEEL			
YARD	M-3	24161	BCIT-BRFJX 1 HOSE ASSEMBLY, 1/2" ID HOSE WITH 1/2" MALE NPTF X 1/2"	COML	VARIOUS			
YARD			-BRMP-20 FEMALE NPTF SWIVEL, 20" L (GATES)					
YARD	M-2	72219	73-103 4 VALVE, BALL, 1/2" NPT PORTS (CONBRACO)	COML	STEEL			
YARD	M-1	24161	BCIT-BRFJX 1 HOSE ASSEMBLY, 1/2" ID HOSE WITH 1/2" MALE NPTF X 1/2"	COML	VARIOUS			
			-BRMP-11 FEMALE NPTF SWIVEL, 11" L (GATES)					
YARD	F-9	79470	68 X 4 4 CONNECTOR, MALE, COMPRESSION-FLARELESS, 1/4" TUBE	COML	BRASS			
			(WEATHERHEAD)					
YARD	F-8	79470	66 X 4 8 CONNECTOR, FEM, COMPRESSION-FLARELESS, 1/4" TUBE	COML	BRASS			
			(WEATHERHEAD)					
YARD	F-7		2 BUSHING, 3/4" X 1/2" IPS, HEX HD		ANSI B16.14 M.I.			
YARD	F-6		4 ELBOW, STREET, 90°, 1/2" IPS, CLASS 150		ANSI B16.3 M.I.			
YARD	F-5	79470	64 X 4 4 TEE, UNION, CPRSN-FLARELESS, 1/4" TUBE (WEATHERHEAD)	COML	BRASS			
YARD	F-4		4 NIPPLE, PIPE, CLOSE, 1/2" IPS		STEEL			
YARD	F-3		3 BUSHING, 1 1/4" X 1/2" IPS, HEX HD		ANSI B16.14 M.I.			
YARD	F-2		4 NIPPLE, PIPE, 1/2" IPS X 2" L		STEEL			
YARD	F-1		2 TEE, 1 1/4" IPS, CLASS 150		ANSI B16.3 M.I.			
YARD	P-1		ALLOY NO. OPTL AR TUBING, 1/4" OD X .030" WALL		ASTM B68 C.A.			
SUPPLIER	PNQD NO.	PSCN	DWG. SIZE	PART OR IDENTIFYING NO.	QTY REQD.	NOMENCLATURE OR DESCRIPTION	SPECIFICATION	MATERIAL

UNLESS OTHERWISE SPECIFIED DIM/TOLERANCES ARE:  $\pm$  IN.

ONE PLACE (.X)  $\pm$  —

TWO PLACE (.XX)  $\pm$  —

THREE PLACE (.XXX)  $\pm$  —

ANGLES  $\pm$  —

DO NOT SCALE THIS DRAWING

FOR INTERPRETATION OF DRAWING 800-STD-100 APPLIES

REMOVE BURRS AND BREAK SHARP EDGES

SHARP EDGES TO —

FILLET RADIUS TO —

MATERIAL

DRAWN BY MTL/GDM

CHECKED BY CT FRAP

DATE 13 JAN 87

15 NOV 83

CONTRACT NO.

DESIGN APPROVAL

DATE 13 JAN 87

APPROVED FOR PROCUREMENT

DATE 15 NOV 83

U.S. ARMY  
BELVOIR RESEARCH, DEVELOPMENT, AND ENGINEERING CENTER  
FORT BELVOIR, VIRGINIA 22060-5406

LCM-8, MOD-1,  
MISCELLANEOUS PIPING  
AND CONNECTIONS

SIZE A1

FSCN 97403

DWG NO. 13226E9475

SCALE NONE

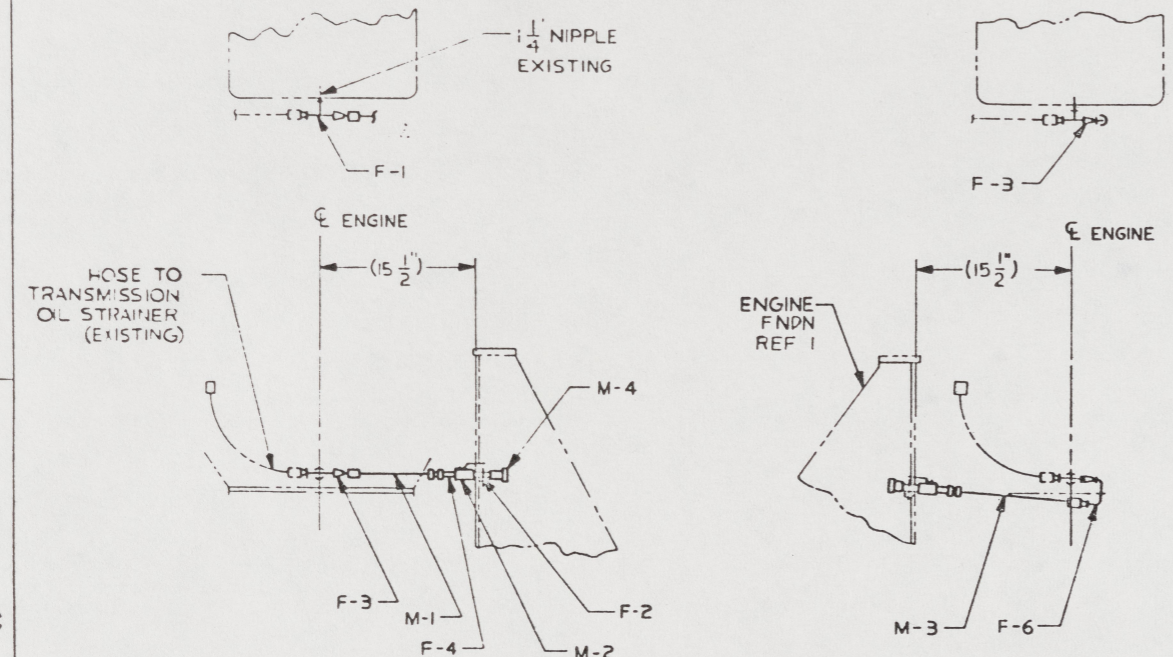
SHEET 1 OF 2

THIS DRAWING APPLIES  
TO HULL NUMBERS  
8520 THROUGH 8560 AND  
8580 THROUGH 8618 ONLY

93

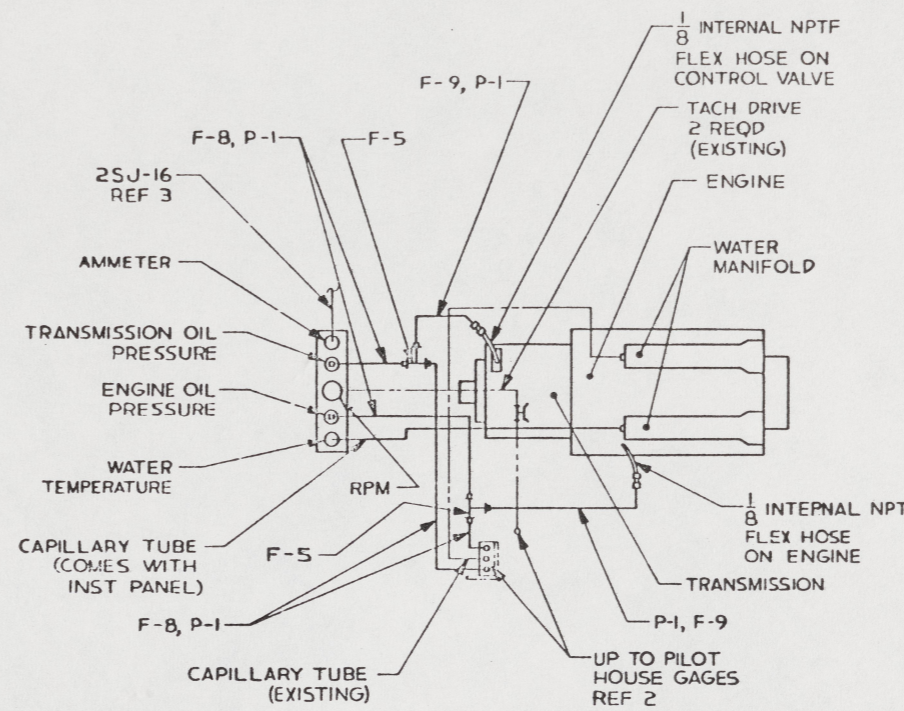
16 15 14 13 12 11 10 9

REVISIONS				
ZONE	LTR	DESCRIPTION	DATE	APPROVED

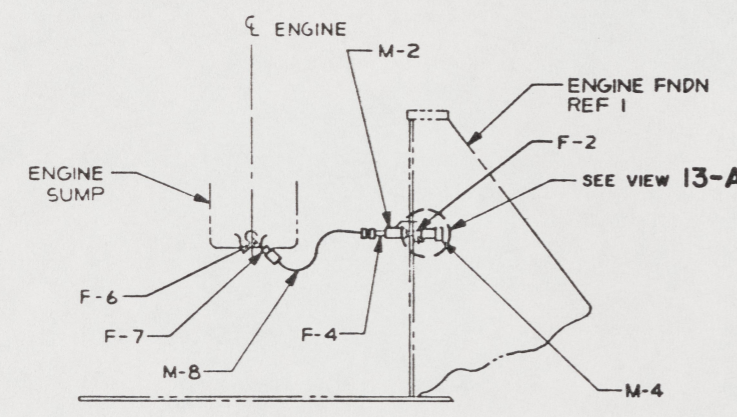


VIEW 15-C  
(5-B)  
ROTATED 90° CCW  
PORT ENGINE TRANSMISSION  
GEAR BOX OIL DRAIN

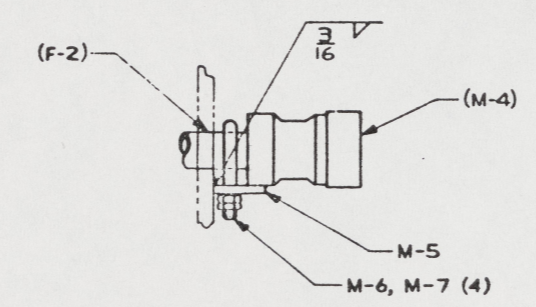
VIEW 14-C  
(5-B)  
ROTATED 90° CCW  
STBD ENGINE TRANSMISSION  
GEAR BOX OIL DRAIN  
SIMILAR TO PORT EXCEPT AS SHOWN



INSTRUMENT GAGE CONNECTIONS  
PORT ENGINE SHOWN  
STBD ENGINE SIMILAR



VIEW 15-A  
(5-B)  
ROTATED 90° CCW  
PORT ENGINE  
OIL SUMP DRAIN  
STBD ENGINE OPPOSITE



VIEW 13-A  
SCALE 6"=1'-0"  
4 PLACES

FIND NO.	FSCM	DWG SIZE	PART OR IDENTIFYING NO.	QTY REQD	NOMENCLATURE OR DESCRIPTION	SPECIFICATION	MATERIAL
PARTS LIST							
UNLESS OTHERWISE SPECIFIED DIM/TOLERANCES ARE: $\pm$ 1/16"			DRAWN BY MTL/GDM		DATE 13 JAN 87	U.S. ARMY BELVOIR RESEARCH, DEVELOPMENT, AND ENGINEERING CENTER FORT BELVOIR, VIRGINIA 22060-5606	
ONE PLACE (.1) $\pm$			CHECKED BY C.Y. P. [Signature]		DATE 18 NOV 88	<b>LCM-8, MOD-1, MISCELLANEOUS PIPING AND CONNECTIONS</b>	
TWO PLACE (.01) $\pm$			CONTRACT NO.				
THREE PLACE (.001) $\pm$			DESIGN APPROVAL [Signature]		DATE 15 JAN 87	SIZE A1 FSCM 97403 DDC NO. 13226E9475 SCALE SHEET 2	
ANGLES $\pm$			APPROVED FOR PROCUREMENT [Signature]		DATE 15 NOV 88		
THIRD ANGLE PROJECTION			REMOVE BURRS AND SHARP EDGES TO				
DO NOT SCALE THIS DRAWING			BREAK SHARP EDGES FILLET RADIUS TO				
FOR INTERPRETATION OF DRAWING DDB-STD-100 APPLIES			MATERIAL				

94

16 15 14 13 12 11 10 9