

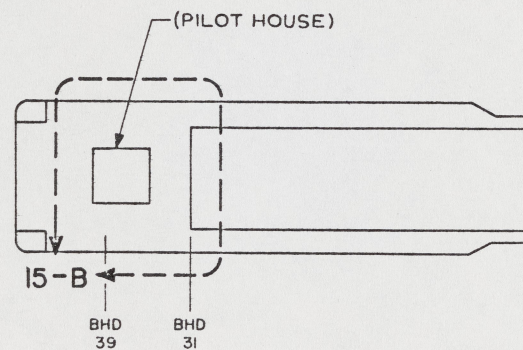
NOTES:

- ALL FABRICATION WELDING AND INSPECTION TO BE IN ACCORDANCE WITH NAVSEA 0900-LP-014-5010.
- TEMPLATE ALL WORK FROM LCM-8 AND EQUIPMENT.
- EQUIPMENT AND WORKMANSHIP SHALL BE IN ACCORDANCE WITH USCG AND ABS REGULATIONS.
- REPAIR ALL PAINT DAMAGED BY THIS INSTALLATION AND PAINT ALL NEW STEEL IN ACCORDANCE WITH U.S. ARMY TECHNICAL BULLETIN TB43-0144.
- MATERIAL ORDERED ON THIS DRAWING IS NOT INTENDED TO BE RESTRICTIVE. SUBSTITUTION OF EQUAL QUALITY MATERIAL MAY BE MADE EXCEPT FOR ITEMS MARKED GFE.
- SLIGHT DEVIATIONS FROM DIMENSIONS SHOWN ARE PERMISSIBLE TO SUIT ACTUAL CONDITIONS FOUND ABOARD THE VESSEL.
- COMPONENTS SHOWN BY SOLID, HEAVY LINES ARE NEW, ORDERED AND INSTALLED IN ACCORDANCE WITH THIS DRAWING. LIGHT, BROKEN OR PHANTOM LINES INDICATE COMPONENTS EXISTING OR ORDERED ON AND INSTALLED BY DRAWINGS REFERENCED AS NOTED.
- TEMPLATE 7 HOLES, 9/16" DIAMETER, FROM EXISTING HOLE PATTERN IN ENGINE ROOM COVER THRU FIND NO. 9, PORT AND STARBOARD. REPLACE EXISTING SCREWS WITH FIND NO. 7.
- TEMPLATE 7 HOLES FROM TRIPOD, 9/16" DIAMETER THRU FIND NO. 9 AND ENGINE ROOM COVER.

REFERENCE DRAWINGS APPLICABLE TO HULL NUMBERS 8540 THRU 8560 AND 8580 THRU 8618		
NO.	DRAWING NO.	TITLE
1	845-4510910	LCM-8, MOD-1, GENERAL ARRANGEMENT
2	145-4510916	LCM-8, MOD-1, DECK PLATING
3	145-4510951	LCM-8, MOD-1, DETAILS, MANHOLES/HATCHES/VENTS
4	113-4661557	LCM-8, MOD-1, MACHINE GUN FNDN AND MOUNTS
5	804-5184210	LOCKER, .50 CALIBER AMMUNITION
6	804-1360106	LOCKER DETAILS

REFERENCE DRAWINGS APPLICABLE TO HULL NUMBERS 8520 THRU 8539		
NO.	DRAWING NO.	TITLE
1	845-2554186	LCM-8, MOD-1, GENERAL ARRANGEMENT
2	145-2554202	LCM-8, MOD-1, DECK PLATING
3	145-2554205	LCM-8, MOD-1, DETAILS, MANHOLES/HATCHES/VENTS
4	113-4661537	LCM-8, MOD-1, MACHINE GUN FNDN AND MOUNTS
5	804-5184210	LOCKER, .50 CALIBER AMMUNITION
6	804-1360106	LOCKER DETAILS

STATUS OF REVISIONS					
SH	ZONE	LTR	DESCRIPTION	DATE	APPROVED
-		A	SEE ECP NO. 90HE3102 AND 90HE3103	20 MAR 79	DLV



KEY PLAN 5-B
SCALE NONE

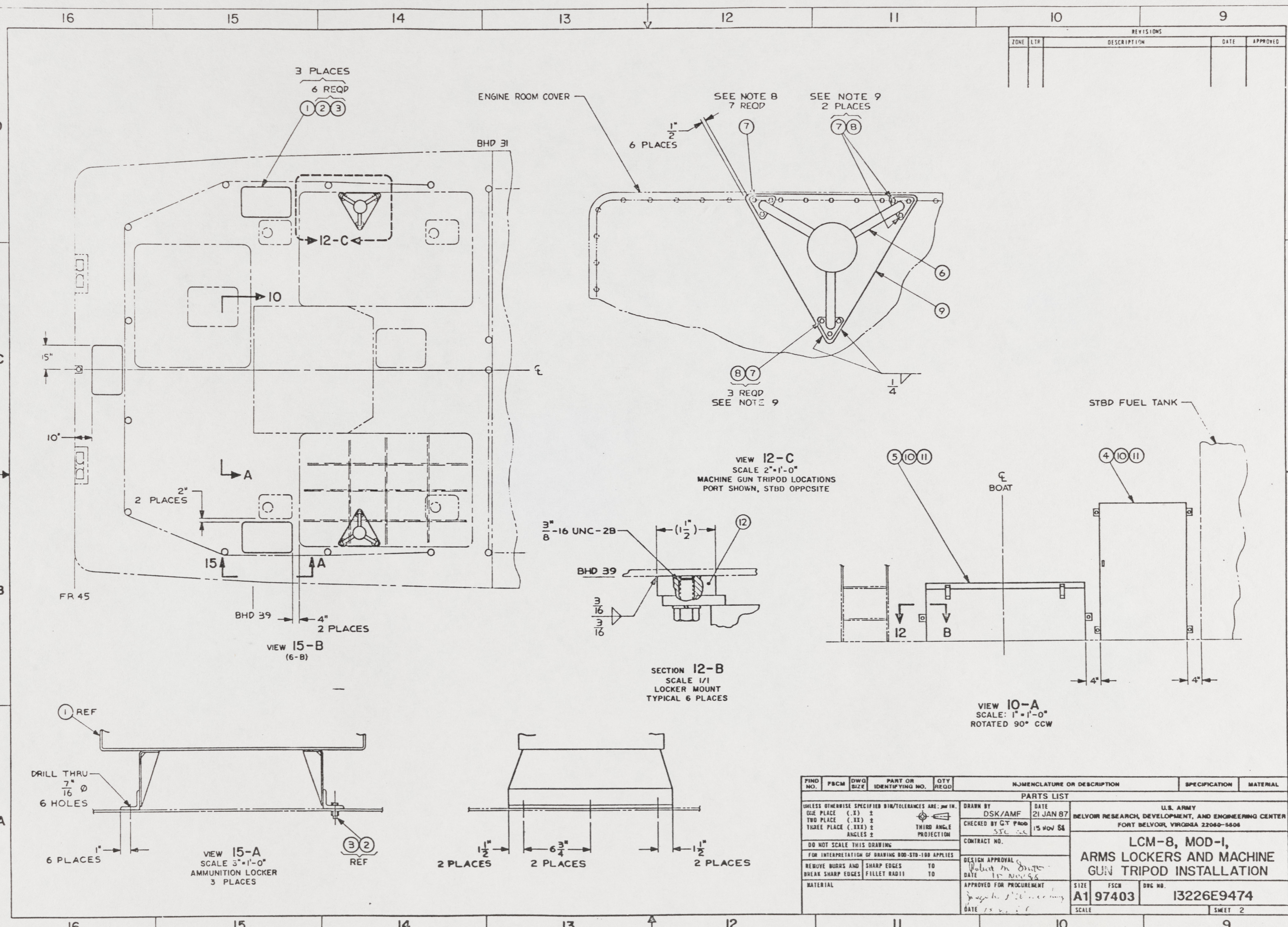
YARD	FIND NO.	FSCM	DWG SIZE	PART OR IDENTIFYING NO.	QTY REQD	NOMENCLATURE OR DESCRIPTION	SPECIFICATION	MATERIAL
YARD 12				6		BAR, 1/2" X 1 1/2" X 2"	ASTM A36	STEEL
YARD 11				6		WASHER, LOCK, HELICAL, 3/8" NOM SIZE		CRES
YARD 10				6		SCREW, CAP, HEX HD, 3/8"-16 UNC-2A X 3/4" L		CRES
YARD 9				2		PLATE, 1/2" X 23" X 27"	ASTM B209	AL ALY
YARD 8				14		NUT, SLFLKG, HEX HD, 1/2"-13 UNC-2B		STEEL
YARD 7				28		SCREW, CAP, HEX HD, 1/2"-13 UNC-2A X 1 3/4" L		CRES
GFE 6	10001			2		GUN MOUNT, MK26, MOD 17 (NAVORD)		CRES
GFE 5	97403			1		LOCKER, CREW SERVED WEAPONS, .50 CAL M.G.		
GFE 4	97403			1		LOCKER, INDIVIDUAL ARMS, VERTICAL CABINET, M16A1/M203		
YARD 3				18		NUT, SLFLKG, HEX, GEN PURPOSE, 3/8"-16 UNC-2B		CRES
YARD 2				18		SCREW, CAP, HEX HD, 3/8"-16 UNC-2A X 1 1/4" L		CRES
GFE 1	53711			3		LOCKER, .50 CALIBER AMMUNITION (NAVSEA)		STEEL

THIS DRAWING APPLIES TO HULL NUMBERS 8520 THROUGH 8560 AND 8580 THROUGH 8618 ONLY

PARTS LIST			
UNLESS OTHERWISE SPECIFIED DIM/TOLERANCES ARE: $\frac{1}{16}$ " IN.	DRAWN BY	DATE	U.S. ARMY BELVOIR RESEARCH, DEVELOPMENT, AND ENGINEERING CENTER FORT BELVOIR, VIRGINIA 22060-5606
ONE PLACE (.X) ±	DSK/AMF	21 JAN 87	
TWO PLACE (.XX) ±	CHECKED BY G.T. PALO	15 Nov 86	LCM-8, MOD-1, ARMS LOCKERS AND MACHINE GUN TRIPOD INSTALLATION
THREE PLACE (.XXX) ±	SXC/CL		
ANGLES ±	THIRD ANGLE PROJECTION		
DO NOT SCALE THIS DRAWING	CONTRACT NO.		
FOR INTERPRETATION OF DRAWING 000-STD-100 APPLIES	DESIGN APPROVAL		
REMOVE BURRS AND SHARP EDGES TO	DATE		
BREAK SHARP EDGES FILLET RADIUS TO	APPROVED FOR PROCUREMENT		
MATERIAL	DATE		
	SIZE	FSCM	DWG NO.
	A1	97403	13226E9474
	SCALE	1/2"=1'-0"	SHEET 1 OF 2

91

REVISIONS				
ZONE	LTR	DESCRIPTION	DATE	APPROVED



FIND NO.	PFCM	DWG SIZE	PART OR IDENTIFYING NO.	QTY REQD	NOMENCLATURE OR DESCRIPTION	SPECIFICATION	MATERIAL
PARTS LIST							
UNLESS OTHERWISE SPECIFIED DIM/TOLERANCES ARE: mm IN.					DRAWN BY	DATE	U.S. ARMY BELVOIR RESEARCH, DEVELOPMENT, AND ENGINEERING CENTER FORT BELVOIR, VIRGINIA 22060-5606
ONE PLACE (.X) ±	TWO PLACE (.XX) ±	THREE PLACE (.XXX) ±	ANGLES ±	THIRD ANGLE PROJECTION	DSK/AMF	21 JAN 87	
DO NOT SCALE THIS DRAWING					CHECKED BY	DATE	LCM-8, MOD-1, ARMS LOCKERS AND MACHINE GUN TRIPOD INSTALLATION
FOR INTERPRETATION OF DRAWING 800-STD-100 APPLIES					DATE	15 NOV 86	
REMOVE BURRS AND BREAK SHARP EDGES					DESIGN APPROVAL	DATE	SIZE A1
					DATE	15 NOV 86	
MATERIAL					APPROVED FOR PROCUREMENT	DATE	FSCM 97403
					DATE	15 NOV 86	
						SCALE	DWG NO. 13226E9474
							SHEET 2

92