

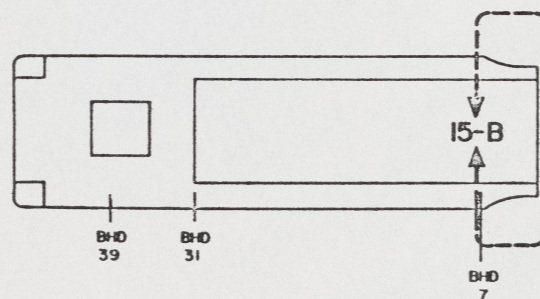
NOTES:

1. ALL FABRICATION WELDING AND INSPECTION TO BE IN ACCORDANCE WITH NAVSEA 0900-LP-014-5010, WELD SIZES BASED ON USE OF AWS A5.1, CLASS E7018 ELECTRODES FOR LC STEEL TO LC STEEL.
2. EQUIPMENT AND WORKMANSHIP SHALL BE IN ACCORDANCE WITH USCG AND ABS REGULATIONS.
3. REPAIR ALL PAINT DAMAGED BY THIS INSTALLATION AND PAINT ALL NEW STEEL IN ACCORDANCE WITH U.S. ARMY TECHNICAL BULLETIN TB43-0144.
4. SLIGHT DEVIATIONS FROM DIMENSIONS SHOWN ARE PERMISSIBLE TO SUIT ACTUAL CONDITIONS FOUND ABOARD THE VESSEL.
5. COMPONENTS SHOWN BY SOLID, HEAVY LINES ARE NEW AND ARE TO BE INSTALLED IN ACCORDANCE WITH THIS DRAWING. PHANTOM LINES INDICATE EXISTING COMPONENTS INSTALLED BY DRAWINGS REFERENCED AS NOTED.
6. SIDE GIRDER, ITEM NO. P-33 AND P-15 OF REF 1, STRINGERS S-2 OF REF 2 AND BHD 7 SHALL BE CUT TO ALLOW FOR A FLUSH FIT OF THE EXISTING DECK PLATE AND FIND NO. 1 OF THIS DRAWING.
7. ENSURE AREA IS "GAS FREE" AND "SAFE FOR MEN TO WORK" BEFORE STARTING ANY OF THE MODIFICATIONS.

REFERENCE DRAWINGS APPLICABLE TO HULL NUMBERS 8540 THRU 8560 AND 8580 THRU 8618		
NO.	DRAWING NO.	TITLE
1	145-4510913	LCM-8, MOD-1-LONGITUDINAL TRUSSES
2	145-4510916	LCM-8, MOD-1-DECK PLATING

REFERENCE DRAWINGS APPLICABLE TO HULL NUMBERS 8520 THRU 8539		
NO.	DRAWING NO.	TITLE
1	145-2534193	LCM-8, MOD-1-LONGITUDINAL TRUSSES
2	145-2534202	LCM-8, MOD-1-DECK PLATING

SH	STATUS OF REVISIONS			DATE	APPROVE
	NO.	DATE	DESCRIPTION		
2					



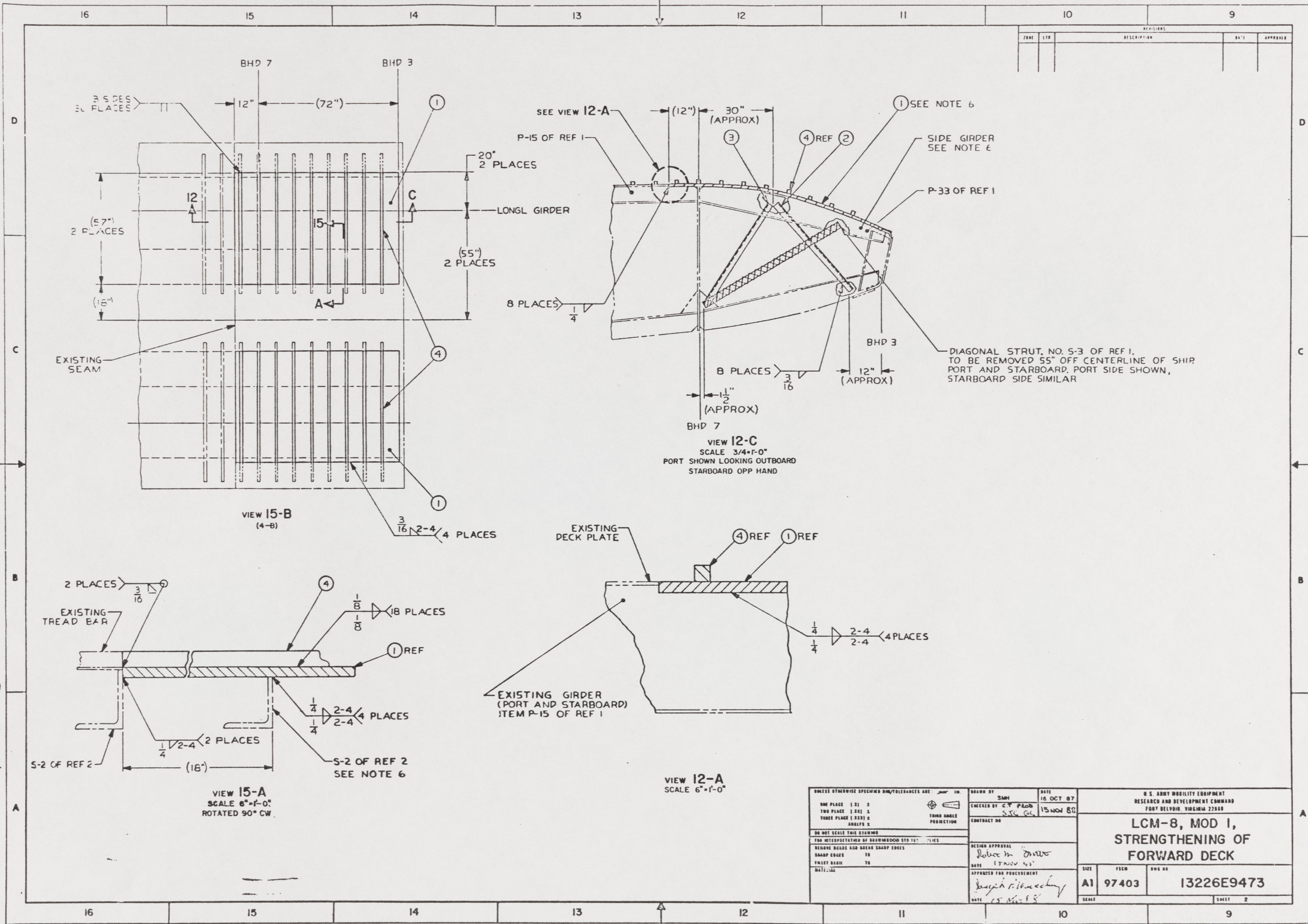
KEY VIEW 5-B

YARD	NO.	QTY	DESCRIPTION	SPECIFICATION	MATERIAL
YARD 4	18		BAR, SQUARE, 3/4" X 3/4"-57" LG	ASTM A131	STEEL
YARD 3	2		ANGLE, 2 1/2" X 2 1/2" X 1/4"-48" LG	ASTM A131	STEEL
YARD 2	2		ANGLE, 2 1/2" X 2 1/2" X 1/4"-46" LG	ASTM A131	STEEL
YARD 1	2		PLATE, 20.4 LB X 57" X 84" LG	ASTM A131	STEEL

SUPPLIER		FINN NO.	PSCH	DWG SIZE	PART OR IDENTIFYING NO.	QTY REQD	NOMENCLATURE OR DESCRIPTION	SPECIFICATION	MATERIAL
PARTS LIST									
UNLESS OTHERWISE SPECIFIED DIM TOLERANCES ARE:  IN. ONE PLACE (±) ± .005 TWO PLACE (±) ± .002 THREE PLACE (±) ± .001 ANGLES ± .005					DRAWN BY: SMH CHECKED BY: G.T. Peab DATE: 15 NOV 83		U.S. ARMY MOBILITY EQUIPMENT RESEARCH AND DEVELOPMENT COMMAND FORT BELVOIR, VIRGINIA 22060		
DO NOT SCALE THIS DRAWING FOR INTERPRETATION BY DRAWING/DOD STD-100 APPLIES REMOVE EDGES AND BREAK SHARP EDGES SHARP EDGES TO .005 FILLET RADIUS TO .005 MATERIAL:					DESIGN APPROVAL: DATE: 11 MAR 84 APPROVED FOR PROCUREMENT: DATE: 15 NOV 83		<b>LCM-8, MOD 1, STRENGTHENING OF FORWARD DECK</b>		
							SIZE: A1	PSCH: 97403	DWG NO: 13226E9473
							SCALE: 1/10	SHEET 1 OF 2	

THIS DRAWING APPLIES TO HULL NUMBERS 8520 THROUGH 8560 AND 8580 THROUGH 8618 ONLY

89



REVISIONS				
NO.	DATE	DESCRIPTION	BY	APPROVED

UNLESS OTHERWISE SPECIFIED DIM/TOLERANCES ARE IN IN.		DRAWN BY SMH	DATE 16 OCT 87	U.S. ARMY MOBILITY EQUIPMENT RESEARCH AND DEVELOPMENT COMMAND FORT BELVOIR, VIRGINIA 22060	
ONE PLACE (1 1/2) 3	TWO PLACE (1 3/16) 2	CHECKED BY C.T. PLOD	DATE 15 NOV 87	<b>LCM-8, MOD 1, STRENGTHENING OF FORWARD DECK</b>	
THREE PLACE (1 3/32) 2	FOUR PLACE (1 1/16) 2	CONTRACT NO.	SCALE		
DO NOT SCALE THIS DRAWING		DESIGN APPROVAL <i>Robert M. Davis</i>		SIZE A1	FORM NO. 97403
FOR INTERPRETATION OF DIMENSIONS SEE 15'		DATE 17 NOV 87		DATE 15 NOV 87	
SHARP EDGES TO FILLET RADIUS TO		APPROVED FOR PROCUREMENT <i>Joseph R. Whalley</i>		SCALE	SHEET 2

90