

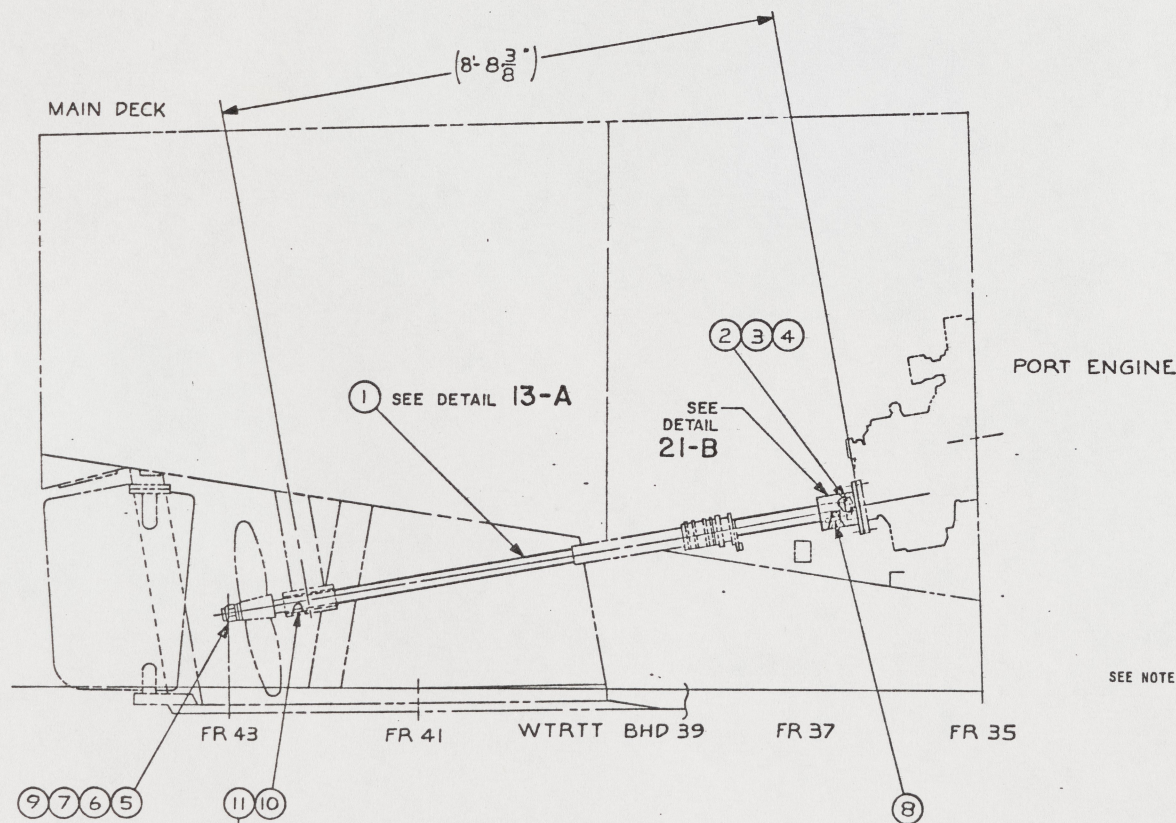
NOTES:

1. THIS DRAWING HAS BEEN DEVELOPED FROM SHIPCHECK INFORMATION FOR ACCOMPLISHING THE INSTALLATION OF PROPELLER SHAFTS AND COMPONENTS TO LCM-8, MOD-1.
2. EQUIPMENT AND WORKMANSHIP SHALL BE IN ACCORDANCE WITH USCG AND ABS REGULATIONS.
3. MATERIAL ORDERED ON THIS DRAWING IS NOT INTENDED TO BE RESTRICTIVE. SUBSTITUTION OF EQUAL QUALITY MATERIAL MAY BE MADE EXCEPT FOR ITEMS MARKED GFE.
4. SLIGHT DEVIATIONS FROM DIMENSIONS SHOWN ARE PERMISSIBLE TO SUIT ACTUAL CONDITIONS FOUND ABOARD THE VESSEL.
5. COMPONENTS SHOWN BY SOLID, HEAVY LINES ARE NEW AND ARE TO BE INSTALLED IN ACCORDANCE WITH THIS DRAWING. PHANTOM LINES INDICATE EXISTING COMPONENTS INSTALLED BY DRAWINGS REFERENCED AS NOTED.
6. PROPELLER SHAFT COUPLING PART OF ITEM NO. 1 OF REF NO. 3, SHALL BE SUPPLIED AS SHOWN IN DETAIL 21-B (EXCEPT FOR TAPERED BORE, KEYWAY AND FINISHED 4.970 DIA RECESS) AND WITH ATTACHING HARDWARE.
7. SLOTTED NUT, FIND NO. 3, SHALL BE ALTERED AS SHOWN TO THICKNESS INDICATED IN DETAIL 23-A.
8. WASHER, FIND NO. 2, SHALL BE ALTERED AS SHOWN TO OD INDICATED IN DETAIL 21-A.
9. REPLACE SETSCREWS WITH FIND NO. 11.
10. FIND NO. 2 THRU 9 TO BE SUPPLIED BY MANUFACTURER OF PROP SHAFT, FIND NO. 1.

REFERENCE DRAWINGS APPLICABLE TO HULL NUMBERS 8540 THRU 8560 AND 8580 THRU 8618		
NO.	DRAWING NO.	TITLE
1	243-5103226	LCM-8, MK 5, SHAFTING AND PROPELLERS ARR AND DETAILS
2	245-4510951	LCM-8 MOD-1 ARRGT/DETAILS SHAFTING PROPELLERS
3	13226E9460	LCM-8, MOD-1, SERVICE LIFE EXTENSION PROGRAM COMPONENTS KIT

REFERENCE DRAWINGS APPLICABLE TO HULL NUMBERS 8520 THRU 8539		
NO.	DRAWING NO.	TITLE
1	243-5103226	LCM-8, MK 5, SHAFTING AND PROPELLERS ARR AND DETAILS
2	245-2534220	LCM-8, MOD-1 ARRGT/DETAILS SHAFTING PROPELLERS
3	13229E2256	LCM-8, MOD-1 SERVICE LIFE EXTENSION PROGRAM COMPONENTS KIT

SHEETS		STATUS OF REVISIONS		DATE	APPROVED
3	2	ZONE	LTR		
A	-		A	14 APR 91	RMS
				DESCRIPTION	
				SEE ECP NO. 90HE3309 AND 90HE3310	



YARD	FIND NO.	FSCM	DWG SIZE	PART OR IDENTIFYING NO.	QTY REQD	NOMENCLATURE OR DESCRIPTION	SPECIFICATION	MATERIAL
11				MS35307-360	8	SCREW, CAP, HEX HEAD, 3/8"-16 UNC X 1" L		CRES
10	76528			CODE NATION	2	CUTLASS BEARING, 2 1/2" ID X 3 3/8" OD X 10" L (MOFFITT)	COHL	BRASS/RBR
9	9C303			14425	2	KEY, 5/8" SQ X 6" L (PRECISION BRAND)	COHL	STEEL
8	9C303			14425	2	KEY, 5/8" SQ X 4 1/2" L (PRECISION BRAND)	COHL	STEEL
7				MS35691-115	2	NUT, HEX, JAM, 1 3/4-5 UNC-2B, 1 THK		CRES
6					2	NUT, HEAVY, HEX, FLAT, 1 3/4-5 UNC-2B, 1 3/4 THK	ANSI B18.2.2	CRES
5				MS24665-641	2	PIN, COTTER, 1/4 DIA X 2 1/4 L		CRES
4				MS24665-519	2	PIN, COTTER, 3/16 DIA X 2 3/4 L		CRES
3					2	NUT, HEAVY HEX, SLOTTED, 1 3/4-5 UNC-2B (SEE DETAIL 23-A)	ANSI B18.2.2	CRES
2				MS15795-832	2	WASHER, 1 3/4 NOM DIA (SEE DETAIL 21-A)		CRES
1				TYPE 630	2	BAR, ROUND, 2 1/2 DIA X 10'-1 1/16" L	ASTM A504	CRES

DETAIL 6-A
PORTSIDE SHOWN, STARBOARD SIMILAR
ELEVATION VIEW
SCALE 3/4" = 1'-0"

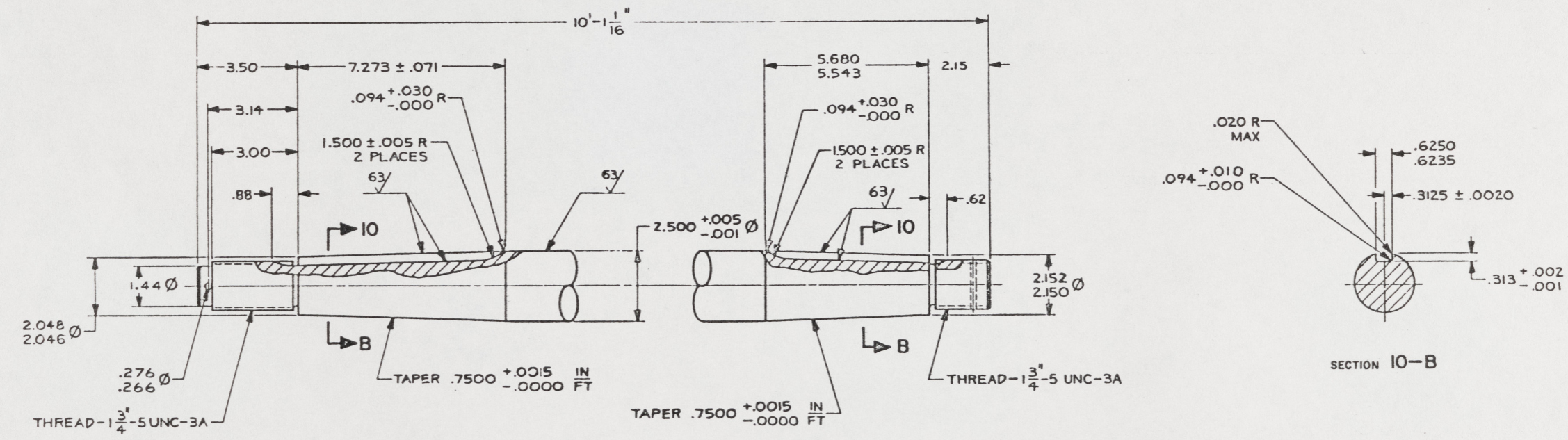
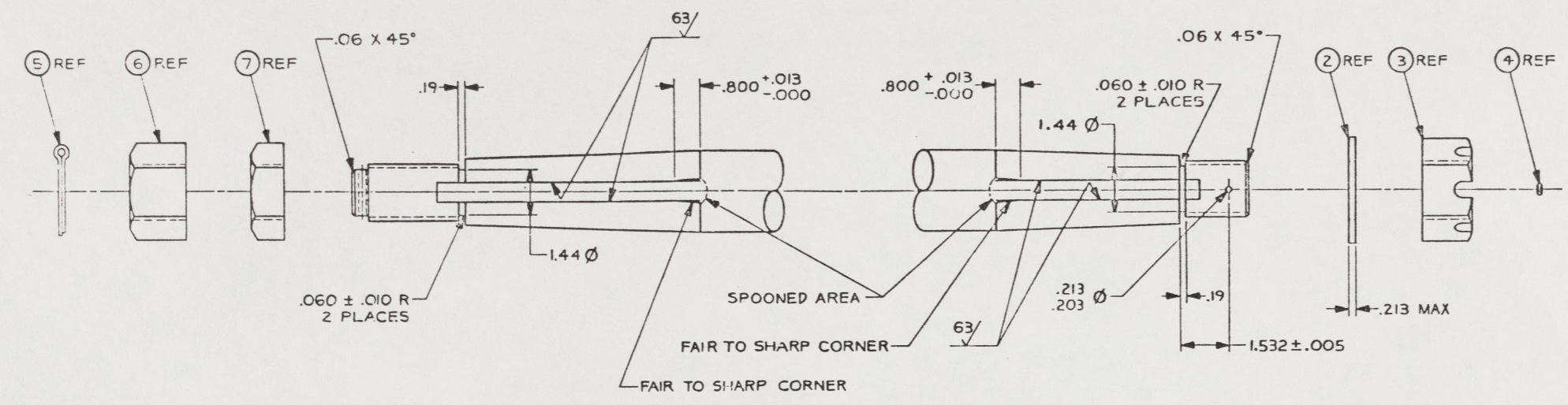
THIS DRAWING APPLIES
TO HULL NUMBERS
8520 THROUGH 8560 AND
8580 THROUGH 8618 ONLY

UNLESS OTHERWISE SPECIFIED DIM/TOLERANCES ARE: $\frac{1}{16}$ IN		DRAWN BY: DAM		DATE: 14 JUN 85	
ONE PLACE (.1) ±		CHECKED BY: C.F. PLOTT		DATE: 15 NOV 88	
TWO PLACE (.02) ±	.03	CONTRACT NO.			
THREE PLACE (.002) ±		DESIGN APPROVAL:		U.S. ARMY MOBILITY EQUIPMENT RESEARCH AND DEVELOPMENT COMMAND FORT BELVOIR, VIRGINIA 22060	
ANGLES ±		Robert M. Dutton		LCM-8, MOD-1, PROPELLER SHAFT DETAILS	
DO NOT SCALE THIS DRAWING		DATE: 15 NOV 88		SIZE: A1	
REMOVE DIMS AND HIDE SHARP EDGES		APPROVED FOR PROCUREMENT:		FSCM: 97403	
SHARP EDGES: 1R		Daryl A. McLaughlin		DWG NO.: 13226E9472	
FILLET RADIUS: 1R		DATE:		SCALE: 1/2" = 1'-0"	
MATERIAL:				SHEET 1 OF 3	

86

16 15 14 13 12 11 10 9

REVISIONS				
NO.	DATE	DESCRIPTION	BY	APPROVED



PROPELLER END

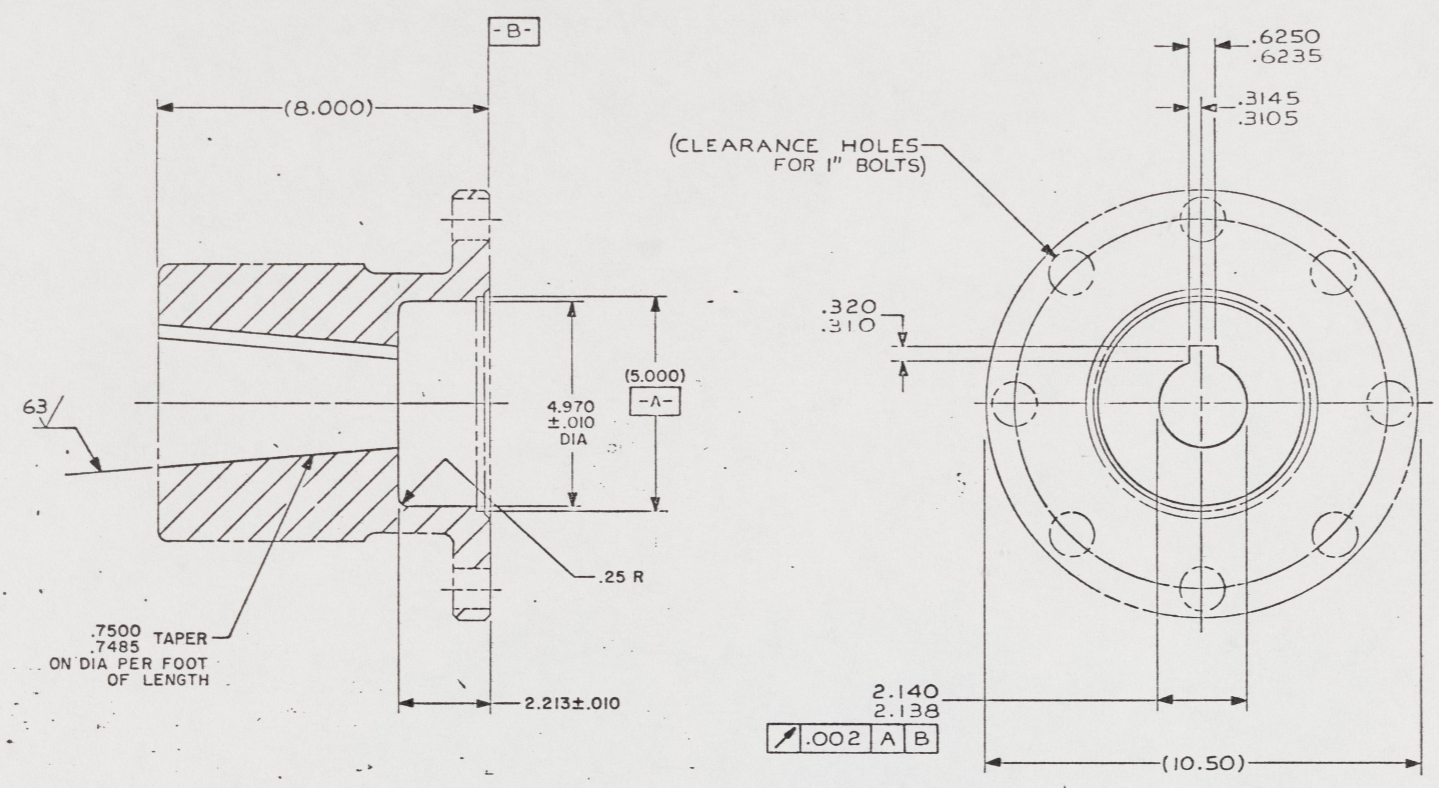
COUPLING END

DETAIL 13-A
PROPELLER SHAFT
(6-B)

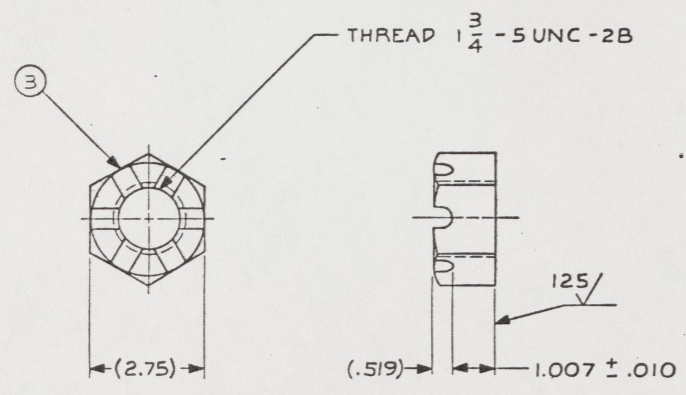
FIND NO.	FSCM	OWD SIZE	PART OR IDENTIFYING NO.	QTY REQD.	NOMENCLATURE OR DESCRIPTION	SPECIFICATION	MATERIAL
PARTS LIST							
UNLESS OTHERWISE SPECIFIED DIM/TOLERANCES ARE IN INCHES				DRAWN BY: JER		DATE: 15 JUN 65	
ONE PLACE () 1				CHECKED BY: C. J. [Signature]		DATE: 15 NOV 65	
TWO PLACE () 2				CONTRACT NO.		D S ARMY MOBILITY EQUIPMENT RESEARCH AND DEVELOPMENT COMMAND FORT BELVOIR VIRGINIA 22060	
THREE PLACE () 3				THIRD ANGLE PROJECTION		LCM-8, MOD-1, PROPELLER SHAFT DETAILS	
FOUR PLACE () 4				DESIGN APPROVAL			
FIVE PLACE () 5				DATE: [Signature]			
SIX PLACE () 6				APPROVED FOR PROCUREMENT			
SEVEN PLACE () 7				DATE: [Signature]		SIZE: A1 FSCM: 97403 DWS NO: 13226E9472 SHEET: 2	

87

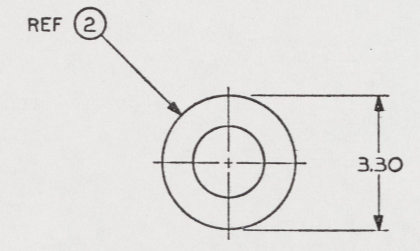
REVISIONS				
ZONE	LTR	DESCRIPTION	DATE	APPROVED
	A	SEE ECP NO. 90HE3309 AND 90HE3310	14 MAR 91	RMS



DETAIL 21-B
PROP SHAFT COUPLING
SCALE 6" = 1'-0"
SEE NOTE 6
(5 - B)



DETAIL 23-A
HEAVY HEX SLOTTED NUT
SCALE 6" = 1'-0"
SEE NOTE 7



DETAIL 21-A
WASHER
SCALE 6" = 1'-0"
SEE NOTE 8

FIND NO.	FSCM	DWG SIZE	PART OR IDENTIFYING NO.	QTY REQD	NOMENCLATURE OR DESCRIPTION	SPECIFICATION	MATERIAL
PARTS LIST							
UNLESS OTHERWISE SPECIFIED DIM/TOLERANCES ARE: $\frac{1}{16}$ IN.					DRAWN BY: DAM	DATE: 15 JUN 88	U.S. ARMY MOBILITY EQUIPMENT RESEARCH AND DEVELOPMENT COMMAND FORT BELVOIR, VIRGINIA 22060
ONE PLACE (.01) ±	TWO PLACE (.001) ±	THREE PLACE (.0001) ±	ANGLES: 0	CHECKED BY: G.T. Peadar	DATE: 15 NOV 88	LCM-8, MOD-1, PROPELLER SHAFT DETAILS	
DO NOT SCALE THIS DRAWING					DESIGN APPROVAL:		DATE: 15 NOV 88
FOR INTERPRETATION OF DIMENSIONS SEE 100 APPLIES					APPROVED FOR PROCUREMENT:	DATE: 15 NOV 88	SCALE: SHEET 3

88