

SC

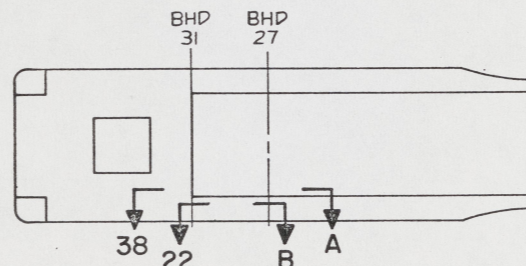
NOTES:

- THIS DRAWING HAS BEEN DEVELOPED FROM SHIPCHECK INFORMATION FOR ACCOMPLISHING THE INSTALLATION OF MARINE SANITATION DEVICE TO LCM-8, MOD-1.
- ALL FABRICATION WELDING AND INSPECTION TO BE IN ACCORDANCE WITH NAVSEA 0900-LP-014-5010, WELD SIZES BASED ON USE OF AWS A5.1, CLASS E7018 ELECTRODES FOR LC STEEL TO LC STEEL, AND LC STEEL TO CRES.
- EQUIPMENT AND WORKMANSHIP SHALL BE IN ACCORDANCE WITH USCG AND ABS REGULATIONS.
- REPAIR ALL PAINT DAMAGED BY THIS INSTALLATION AND PAINT ALL NEW STEEL IN ACCORDANCE WITH U.S. ARMY TECHNICAL BULLETIN TB43-0144.
- MATERIAL ORDERED ON THIS DRAWING IS NOT INTENDED TO BE RESTRICTIVE. SUBSTITUTION OF EQUAL QUALITY MATERIAL MAY BE MADE EXCEPT FOR ITEMS MARKED GFE.
- SLIGHT DEVIATIONS FROM DIMENSIONS SHOWN ARE PERMISSIBLE TO SUIT ACTUAL CONDITIONS FOUND ABOARD THE VESSEL.
- COMPONENTS SHOWN BY SOLID, HEAVY LINES ARE NEW AND ARE TO BE INSTALLED IN ACCORDANCE WITH THIS DRAWING. PHANTOM LINES INDICATE EXISTING COMPONENTS INSTALLED BY DRAWINGS REFERENCED AS NOTED.
- LENGTH OF SCREWS, FIND NO. M-13, SHALL BE DETERMINED UPON INSTALLATION OF SEACOCK, FIND NO. V-1. HOLES SHALL BE DRILLED AND TAPPED IN PLATE, FIND NO. M-40, USING SEACOCK, FIND NO. V-1, AS TEMPLATE.
- HOSE ASSEMBLIES, FIND NO. M-3 AND M-7, SHALL BE ADEQUATELY SECURED ALONG BULKHEADS AND AROUND SCUPPER, USING STRAPS, FIND NO. M-8 AND M-6. STRAPS SHALL BE SECURED USING WELDING BOLTS, FIND NO. M-41 AND NUTS, FIND NO. M-42, WHERE NEEDED.
- WELDS FORMING MSD COMPARTMENT SHALL BE CONTINUOUS AND WATERTIGHT.
- PIPE THREADS ON FIND NO. P-7, (1-1/2"-11 1/2 MALE NPT) SHALL BE IN ACCORDANCE WITH FED-STD-H28.
- FREEMING PORT (SCUPPER) SHALL BE RELOCATED AS SHOWN IN VIEW 38-A, FOR STARBOARD SIDE ONLY. EXISTING PORTS ON OUTER SHELL AND WING WALL SHALL BE SEALED WATERTIGHT, USING PLATES, FIND NO. M-28. (TRIM TO FIT.)
- STAINLESS STEEL BAND, FIND NO. M-15, IS SHIPPED IN 100 FT ROLLS. USE PERIMETER OF DIGESTOR TANK D-1, DIGESTOR TANK D-2 AND FILTER CANNISTER, OF FIND NO. M-10, AS GUIDE AND CUT TO FIT PER INSTRUCTIONS INCLUDED.
- CLAMP, FIND NO. M-16, IS SHIPPED IN BOXES OF A QUANTITY OF TEN. THE INSTALLATION OF MSD REQUIRES A QUANTITY OF SIX.
- WELD STUDS, FIND NO. M-19, SHALL BE LOCATED USING MARINE HEAD, FIND NO. M-9, AS TEMPLATE.
- SLOTS IN ANGLES, FIND NO. M-35, SHALL BE CUT SIMILAR TO SLOTS IN PLATE, FIND NO. M-20, OF DIGESTOR TANK STOW TABLE.
- INLET OF DIGESTOR TANK, D-1, PART OF FIND NO. M-10, IS TO BE MODIFIED BY MANUFACTURER FROM 3" DIA TO A 1-1/2" FEMALE NPT.
- WELD STUDS, FIND NO. 46, SHALL BE LOCATED USING SWITCH, FIND NO. M-47 LAMP FIXTURE, FIND NO. M-48, CABINET, FIND NO. M-51-M-53, HOLDER, M-54 AND RECEPTACLE, M-55, AS TEMPLATE.
- APPLY SLIP-RESISTANT SELF-ADHESIVE TREADS (3 TREADS) IN FRONT OF MARINE HEAD, FIND NO. M-9, AND ALONG OUTBOARD WALKWAY OF HEAD COMPARTMENT IN ACCORDANCE WITH TB 43-0144, SECTION E.
- MSD COMPONENT, FIND NO. M-10, SHALL BE PROCURED FROM:  
"CONSUMAT SYSTEMS OF LOUISIANA  
1174 CAMP ST  
NEW ORLEANS LA 70130"
- BAR, FIND NO. M-61 MAY BE WELDED OR PRESSED INTO BAR, FIND NO. M-44.
- DIMENSIONS FOR COMPARTMENT DOOR, FIND NO. M-57, ARE FOR REFERENCE ONLY. THE DOOR SHALL EXTEND 1/4" BEYOND DOOR COAMING, FIND NO. M-39, ALL AROUND, EXCEPT AT ENGINE ROOM FLOOR AND AT HINGE SIDE. SEE (SECTION 50-C AND VIEW 55-B).
- PROVIDE STOP FOR DOOR, FIND NO. M-57, TO PREVENT DOOR FROM STRIKING ANY CO2 SYSTEM COMPONENTS WHEN IN THE OPEN POSITION.
- CHASE THE THREADS ON STEM OF STRAINER, FIND NO. M-1, TO WITHIN .25 MAX OF FLANGE FACE.

REFERENCE DRAWINGS APPLICABLE TO HULL NUMBERS 8540 THRU 8560 AND 8580 THRU 8618		
NO.	DRAWING NO.	TITLE
1	145-4510921	DETAILS, BULKHEADS AND TRANSOM
2	13226E9466	MODIFICATIONS TO RAMP HYDRAULIC SYSTEM
3	145-4510914	HULL PLATING SIDE/INBOARD LONG, BULKHEAD
4	145-4510916	DECK PLATING
5	13226E9476	LCM-8, MOD-1, POWER LIGHTING/IC SYSTEM

REFERENCE DRAWINGS APPLICABLE TO HULL NUMBERS 8520 THRU 8539		
NO.	DRAWING NO.	TITLE
1	145-2534195	DETAILS, BULKHEADS AND TRANSOM
2	13226E9466	MODIFICATIONS TO RAMP HYDRAULIC SYSTEM
3	145-2534200	HULL PLATING SIDE/INBOARD LONG, BULKHEAD
4	145-2534202	DECK PLATING
5	13226E9476	LCM-8, MOD-1, POWER LIGHTING/IC SYSTEM

SHEETS				STATUS OF REVISIONS						
7	6	5	4	3	2	ZONE	LTR	DESCRIPTION	DATE	APPROVED
A	A	A	A	A	A		A	SEE ECP NO. 90HE3102	10 MAR 88	LM S
A	A	A	A	A	B		B	SEE ECP NO. 90HE3309 AND 90HE3310	18 JUN 88	LM S



KEY VIEW  
SCALE NONE

FOR CONTINUATION OF PARTS LIST SEE SHEET 2

YARD	FIND NO.	QTY	DESCRIPTION	COMPL	MATERIAL		
YARD	V-4	12168	T-433	1	VALVE, CHECK, SWING, 150 LB SWP 3/4" NPT (NIBCO)	COML	BRONZE
YARD	V-3	73124	TW10150T	1	VALVE, BALL, 3-WAY, 1-1/2" IPS (HAYWARD)	COML	PVC
YARD	V-2	17330	1-1/2-5002F-316	1	VALVE, SWING CHECK, 1/4 PSI CRACK, 1-1/2" IPS (TECHNO)	COML	CRES
YARD	V-1	46576	FIG. 805-NO.	1	BODY, SEACOCK, 3/4" IPS (PERKO)	COML	BRONZE
			5-3/4				
YARD	F-14	72423	FIG. 4401-150	1	UNION, PIPE, STD, 3/4" IPS (FLAGG)	COML	BRONZE
YARD	F-13	72423	FIG. 4171-297	1	BUSHING, PIPE, REDUCING, 1-1/2" IPS MALE TO 3/4" IPS FEMALE (FLAGG)	COML	BRONZE
YARD	F-12	72423	FIG. 4101-300	1	ELBOW, 90°, FEMALE, 1-1/2" IPS (FLAGG)	COML	BRONZE
YARD	F-11	45681	3/4 X 3/8 FG-B	2	CONNECTOR, REDUCING, 3/8 MALE IPS TO 3/4 FEMALE IPS (PARKER)	COML	BRONZE
YARD	F-10	96405	76-015-27	3	ELBOW, 90°, COMBINATION, HOSE TO MALE PIPE, 1-1/2" IPS (LASCO)	COML	PVC
YARD	F-9	96405	58-210-27	2	TEE, REDUCING, HOSE, 1-1/2" ON RUN, 3/4" ON BRANCH (LASCO)	COML	PVC
YARD	F-8	96405	76-007-27	6	ELBOW, 90°, COMBINATION, HOSE TO MALE PIPE, 3/4" IPS (LASCO)	COML	PVC
YARD	F-7	72423	FIG. 4103-300	1	ELBOW, STREET, 90°, 1-1/2" IPS (FLAGG)	COML	BRONZE
YARD	F-6	96405	12-015-27	3	ADAPTER, MALE, HOSE TO MALE PIPE, 1-1/2" IPS (LASCO)	COML	PVC
YARD	F-5	96405	14-007-27	4	ELBOW, 90°, HOSE TO HOSE, 3/4" ID HOSE (LASCO)	COML	PVC
YARD	F-4	81718	OPW 63	1	VENT, SERVICE STATION, 1-1/2" IPS (DOVER/OPW)	COML	CI
YARD	F-3	54119	0021130-015	1	TEE, 1-1/2" IPS, FEMALE (PPS)	COML	PVC
YARD	F-2	96405	14-015-27	3	ELBOW, 90°, HOSE TO HOSE, 1-1/2" ID HOSE (LASCO)	COML	PVC
YARD	F-1	46576	FIG. 63-NO.	1	ADAPTER, PIPE TO HOSE, 3/4" IPS TO 3/4" ID HOSE, 90° (PERKO)	COML	BRONZE
			5-3/4				
YARD	P-8		GR AND COND OPTL	1	TUBE, 1" OD X 1/8" WALL X 23" L	ASTM A512	STEEL
YARD	P-7		UNS C12000-061	AR	PIPE, 1-1/2" IPS, REGULAR	ASTM B42	CU ALY
YARD	P-6		MS20913-12	1	PLUG, PIPE, 1-1/2" IPS		STEEL
YARD	P-5	27901	27085	1	NIPPLE, CLOSE, 1-1/2" IPS (USPC)		PVC
YARD	P-4		MSS1953-111	1	NIPPLE, PIPE, LONG, 3/4" IPS X 8" LG		STEEL
YARD	P-3		MSS1953-97	2	NIPPLE, CLOSE, 3/4" IPS		STEEL
YARD	P-2		MSS1953-171	2	NIPPLE, PIPE, SHORT, 1-1/2" IPS X 2-1/2" LG		STEEL
YARD	P-1		MS39233-8	1	COUPLING, PIPE, 1-1/2" IPS		MI

PARTS LIST		U.S. ARMY BELVOIR RESEARCH, DEVELOPMENT, AND ENGINEERING CENTER FORT BELVOIR, VIRGINIA 22060-5606	
UNLESS OTHERWISE SPECIFIED DIM/TOLERANCES ARE: $\pm$ .001 IN.	DRAWN BY LG/MTJ	DATE 30SEP88	
ONE PLACE (.X) $\pm$ —	CHECKED BY GT.PED	DATE 15 NOV 88	
TWO PLACE (.XX) $\pm$ —	THIRD ANGLE PROJECTION		
THREE PLACE (.XXX) $\pm$ —			
ANGLES $\pm$ —			
DO NOT SCALE THIS DRAWING	CONTRACT NO.		
FOR INTERPRETATION OF DRAWING DOD-STD-100 APPLIES	DESIGN APPROVAL		
REMOVE BURRS AND SHARP EDGES — TO —	DATE 17 NOV 88		
BREAK SHARP EDGES FILLET RADI — TO —	APPROVED FOR PROCUREMENT		
MATERIAL	DATE 15 NOV 88	SIZE A1	CAGE 97403
		DWG NO. 13226E9468	
		SCALE 1-1/2" = 1'-0"	SHEET 1 OF 7

69

16 15 14 13 12 11 10 9

REVISIONS				
ZONE	LTR	DESCRIPTION	DATE	APPROVED
A		THIS SHEET ADDED. SEE ECP NO. 90HE3102	20 MAR 88	AMS
B		SEE ECP NO. 90HE3309 AND 90HE3310	16 MAR 91	AMS

YARD	M-NO	QTY	DESCRIPTION	SPECIFICATION	MATERIAL			
YARD	M-63	3	PLATE, 3/16" X 2" X 4-1/4" LG	ASTM A36	STEEL			
YARD	M-62	6	PLATE, 3/16" X 1-1/32" X 2"	ASTM A36	STEEL			
YARD	M-61	1	TYPE 304 BAR, ROUND, 3/8" DIA STK X 2 3/4" LG	ASTM A276	CRES			
YARD	M-60	39428	1494A12 HINGE, FULL MORTISE, 4" X 4" (MCMASTER-CARR)	COML	STEEL			
YARD	M-59	24	MS27183-9 WASHER, FLAT, ROUND, GEN PURPOSE, 1/4" NOM SIZE		STEEL			
YARD	M-58	24	MS35190-291 SCREW, MACH, FLT CSK HD, CROSS-RECESSED, 1/4-20 UNC-2B X 1" LG		STEEL			
YARD	M-57	1	6061-T6 PLATE, 5/16" X 30" X 68"	ASTM B209	AL ALY			
YARD	M-56							
YARD	M-55	39428	NO. 3027K12 RECEPTACLE, DISPOSABLE LINER, 11" H X 8" W X 4 1/4" D (MCMASTER-CARR)	COML	CRES			
YARD	M-54	39428	NO. 3009K5 HOLDER, PAPER TOWEL, 7 1/4" H X 12 1/8" W X 6 1/8" D (MCMASTER-CARR)	COML	CRES			
YARD	M-53	4Y520	PT NO. 10052009 1 SET EXTERNAL WALL MTG BRACKETS (SET OF 4) (ROSE)	COML	STEEL			
YARD	M-52	4Y520	PT NO. 21610001 2 DOOR HANDLE (ROSE)	COML	PLASTIC			
YARD	M-51	4Y520	PT NO. 21304000 1 CABINET, WATERTIGHT, 15.74" H X 11.81" W X 7.87"D (ROSE)	COML	FIBERGLASS			
YARD	M-50		M19622/4-01 1 STUFFING TUBE, "Y" TYPE, WITH PACKING ASSY IC	MIL-S-19622/4	NYLON			
YARD	M-49		M19622/3-001 4 STUFFING TUBE, STRAIGHT, WITH PACKING ASSY IC, 1/2" NPT	MIL-S-19622/3	NYLON			
YARD	M-48	78011	LVJB106 1 FIXTURE, INCANDESCENT LAMP, WATERPROOF, 100 W (RUSSELL-STOLL)	COML	BRASS			
YARD	M-47	78011	1493N 2 SWITCH, ROTARY, 10 A, DOUBLE POLE (RUSSELL STOLL)	COML	BRASS			
YARD	M-46	54553	TYPE CD, 1/4-20 12 STUD, WELD, 1/4-20 UNC X 3/4" LG, SMALL FLANGE (ERICO JONES)	COML	CRES			
YARD	M-45	39428	2376K2 1 TOILET ROLL HOLDER (MCMASTER-CARR)	COML	CRES			
YARD	M-44		TYPE 304 1 BAR, ROUND, 1/2" DIA STK X 5-1/4" L	ASTM A276	CRES			
YARD	M-43		1 ANGLE, 2" X 1-1/2" X 3/16" X 5'-1" LG	ASTM A36	STEEL			
YARD	M-42		MS35649-282 AR NUT, PLAIN, HEX, NO. 8 (.164)-32 UNC		STEEL			
YARD	M-41		MS51934-8 AR BOLT, WELDING, NO. 8 (.164)-32 UNC X 1/2" LG		STEEL			
YARD	M-40		1 PLATE, 3/4" X 3" OD	ASTM A36	STEEL			
YARD	M-39		1 FB, 1/4" X 2" X 14'-5"	ASTM A36	STEEL			
YARD	M-38		ALY 6061-T6 2 PLATE OR BAR, 1/2" X 3/4" X 1"	ASTM B221	AL ALY			
YARD	M-37		MS35333-39 4 WASHER, LOCK, FLAT, INTERNAL TOOTH, NO. 10		STEEL			
SUPPLIER	FIND NO.	CAGE	DWG SIZE	PART IDENTIFYING NO.	QTY REQD	NOMENCLATURE OR DESCRIPTION	SPECIFICATION	MATERIAL

YARD	M-NO	QTY	DESCRIPTION	SPECIFICATION	MATERIAL
YARD	M-36	4	MS35207-261 SCREW, MACHINE-PAN HD, CROSS-RECESSED, NO. 10-32 UNF X .38" L		STEEL
YARD	M-35	2	ANGLE, 3" X 2" X 3/16" X 6" LG	ASTM A36	STEEL
YARD	M-34	2	ANGLE, 2" X 2" X 3/16" X 2" LG	ASTM A36	STEEL
YARD	M-33	2	6061-T6 BAR, ROUND, 1/2" STK X 10 1/2" L (APPROX)	ASTM B211	AL ALY
YARD	M-32	2	ANGLE, 1 1/2" X 1 1/2" X 3/16" X 1'-3 1/2" LG	ASTM A36	STEEL
YARD	M-31	2	FB, 3/16" X 2" X 2'-2" LG	ASTM A36	STEEL
YARD	M-30	1	FB, 3/16" X 2" X 2'-3" LG	ASTM A36	STEEL
YARD	M-29	9	ANGLE, 2" X 2" X 3/16" X 3'-6" LG	ASTM A36	STEEL
YARD	M-28	2	PLATE, 3/16" X 8 7/8" X 1'-3" LG SEE NOTE 12	ASTM A36	STEEL
YARD	M-27	1	PLATE, 3/16" X 2'-6 1/2" X 6'-0" LG	ASTM A36	STEEL
YARD	M-26	1	PLATE, 3/16" X 3'-9 1/4" X 6'-0" LG	ASTM A36	STEEL
YARD	M-25	2	FB, 3/16" X 2" X 1'-7 1/2" LG	ASTM A36	STEEL
YARD	M-24	36	MS35338-139 WASHER, LOCK-SPRING, HELICAL, 1/4" NOM DIA		CRES
YARD	M-23	36	MS51971-1 NUT, HEX, PLAIN, 1/4-20 UNC-2B		CRES
YARD	M-22	71177	600-G 1 FLANGE, TANK-THRU HULL, 1-1/2" IPS (BUCKEYE)	COML	STEEL
YARD	M-21	71177	600-D 1 FLANGE, TANK-THRU HULL, 3/4" IPS (BUCKEYE)	COML	STEEL
YARD	M-20	2	FB, 3/16" X 4" X 6" LG	ASTM A36	STEEL
YARD	M-19	54553	TYPE CD, SF 4 STUD, WELD, 5/16-18 UNC X 1", LG, SMALL FLANGE, (ERICO JONES)	COML	CRES
YARD	M-18		2 ANGLE, 1-1/2" X 1-1/2" X 3/16" X 10" LG	ASTM A36	STEEL
YARD	M-17	70847	C724 1 BOX BUCKLE, "SCRU-LOKT"-1/2" (HOUDAILLE)	COML	CRES
YARD	M-16	70847	M311 1 BOX CLAMP, ROLL-BAND TYPE, "SCRU-SEAL" (HOUDAILLE)- (SEE NOTE 15)	COML	CRES
YARD	M-15	70847	C134 1 BOX BAND, STNLS STL, "BAND-IT", -1/2" (HOUDAILLE) - (SEE NOTE 14)	COML	CRES
YARD	M-14		MS51922-9 4 NUT, HEX, PREVAILING TORQUE, 5/16-18 UNC		STEEL
YARD	M-13		MS51849-68 4 SCREW, MACH, HEX HD, NO. 10 (.190)-32 UNF X 1" L SEE NOTE 8		STEEL
YARD	M-12		MS35338-43 4 WASHER, LOCK-SPRING, NO. 10 (.190) NOM SZ SEE NOTE 8		STEEL
YARD	M-11		1 PLATE, 1/2" X 3" X 4" LG	ASTM A36	STEEL
GFE	M-10		TYPE II, MOD 10 1 SANITATION SYSTEM, MARINE (HUMPHREY)	COML	SEE NOTE 17 AND 20
GFE	M-9	79577	1550-C 1 HEAD, MARINE, "SEACLO" (WILCOX-CRITTENDEN)	COML	
YARD	M-8		MS21314-9 AR STRAP, RETAINING, FOR CABLE, 1-1/16 OD		STEEL
YARD	M-7	24161	75W 9 HOSE, WATER DISCHARGE, 1-1/2" ID (GATES)	COML	RUBBER
YARD	M-6		MS35338-45 4 WASHER, LOCK-SPRING, HELICAL, 5/16" NOM DIA		
YARD	M-5		MS35842-12 36 CLAMP, HOSE, LOW PRESSURE, TYPE "F" (1-1/2" ID HOSE)		CRES
YARD	M-4		MS35842-11 32 CLAMP, HOSE, LOW PRESSURE, TYPE "F", (3/4" ID HOSE)		CRES
YARD	M-3	24161	75W 8 HOSE, WATER DISCHARGE, 3/4" ID (GATES)	COML	RUBBER
YARD	M-2		M1BC510 1 GASKET, 2 1/2" OD X 1 1/16" ID X 1/8" STK	ASTM D2000	RUBBER
YARD	M-1	79577	8577-3/4 1 INTAKE STRAINER (WILCOX CRITTENDEN) SEE NOTE 24	COML	BRONZE
			PIPE		

UNLESS OTHERWISE SPECIFIED DIM/TOLERANCES ARE: .001" IN PLACE (.XX) ± .005" IN PLACE (.XXX) ± .010" ANGLES ±

THIRD ANGLE PROJECTION

DO NOT SCALE THIS DRAWING FOR INTERPRETATION OF DRAWING ODD-STD-100 APPLIES

REMOVE BURRS AND BREAK SHARP EDGES TO SHARP EDGES TO FILLET RADIUS TO

MATERIAL

DESIGN APPROVAL  
DATE 15 MAR 88

APPROVED FOR PROCUREMENT  
DATE 15 MAR 88

DATE 15 MAR 88

U.S. ARMY  
BELVOIR RESEARCH, DEVELOPMENT, AND ENGINEERING CENTER  
FORT BELVOIR, VIRGINIA 22060-5608

CONTRACT NO.

LG/MTJ DATE 30 OCT 88  
CHECKED BY G.T. PROSP DATE 15 MAR 88  
SSC GC

LCM-8, MOD 1,  
MARINE SANITATION DEVICE

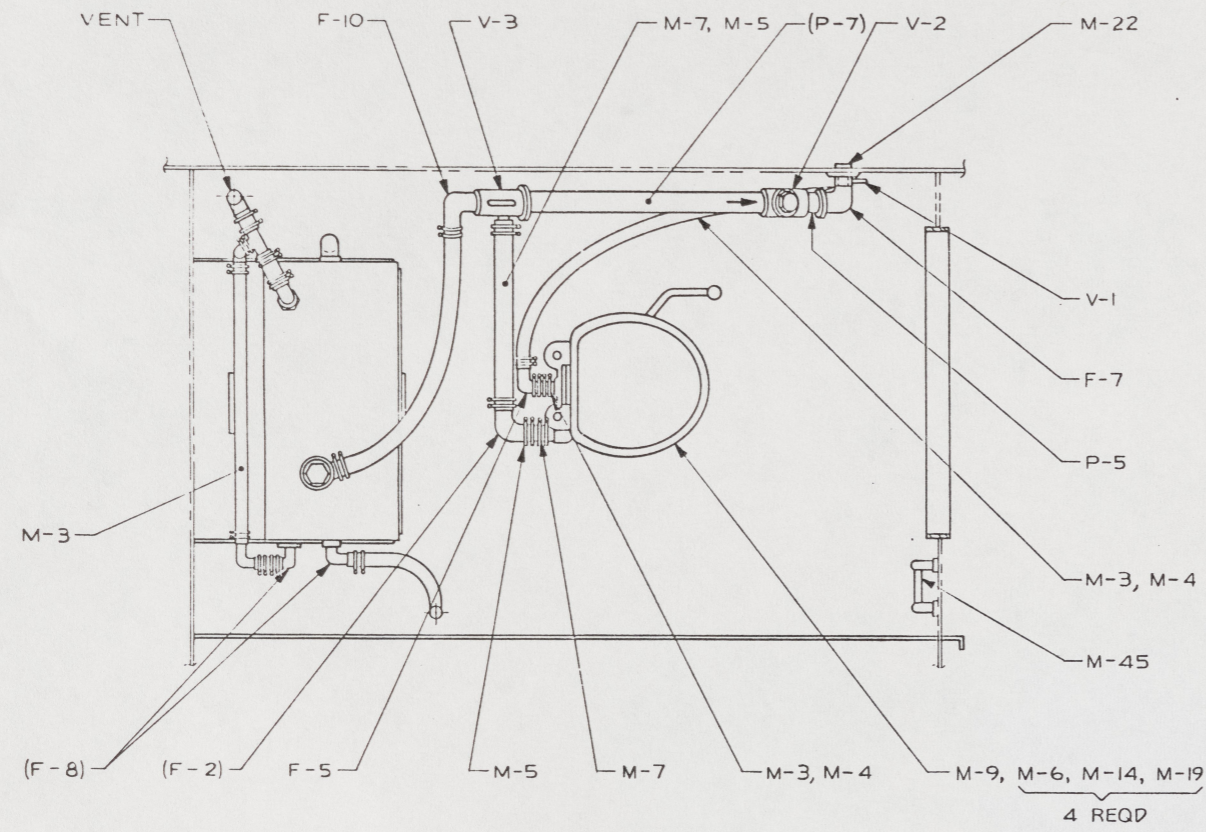
SIZE A1 CAGE 97403 DWG NO. I3226E9468  
SCALE SHEET 2

70

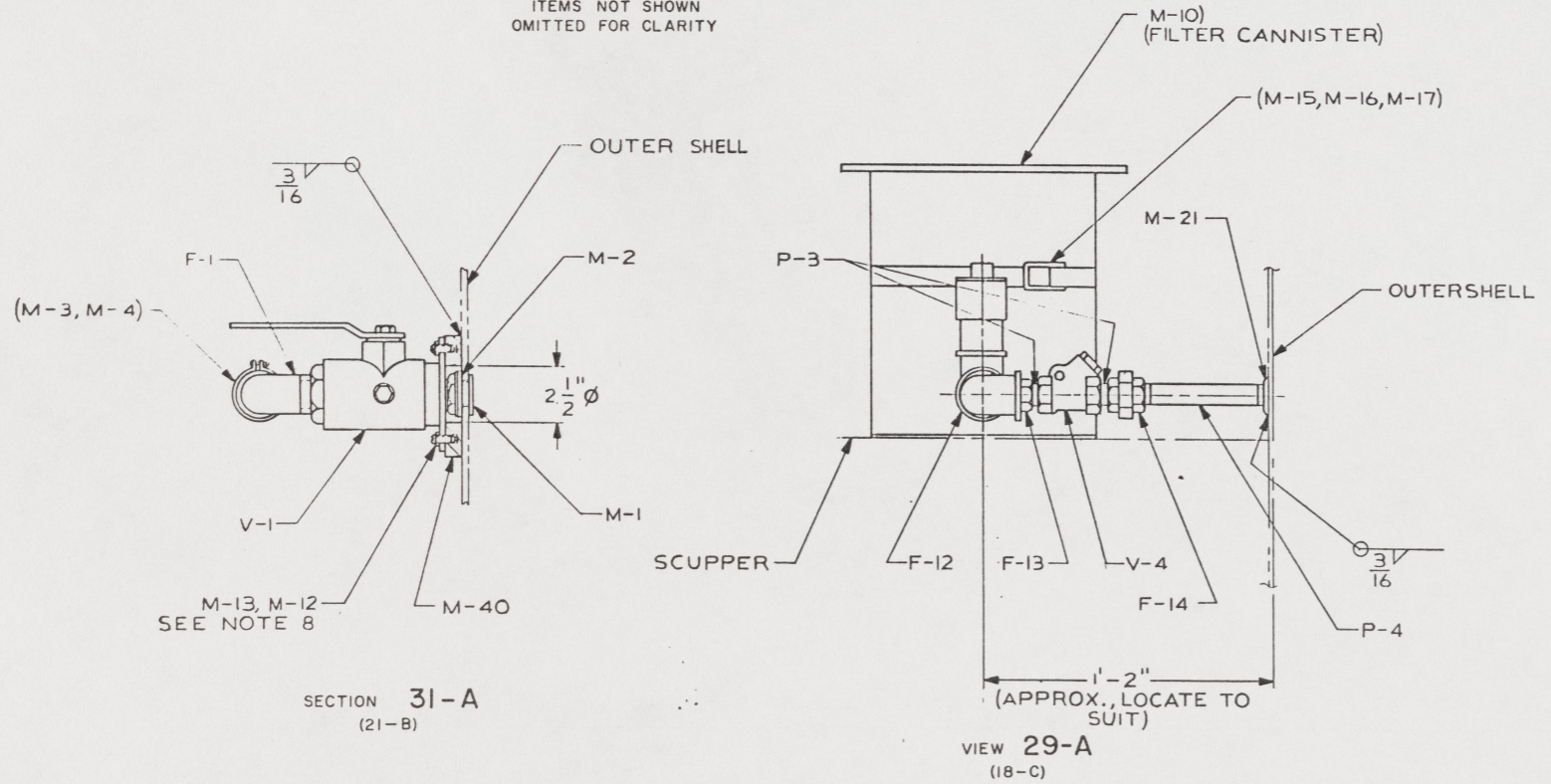


32 31 30 29 28 27 26 25

REVISIONS				
ZONE	LTR	DESCRIPTION	DATE	APPROVED
	A	SEE ECP NO. 90HE3102		



SECTION 31-B  
(24-C)  
ITEMS NOT SHOWN  
OMITTED FOR CLARITY



SECTION 31-A  
(21-B)

VIEW 29-A  
(18-C)

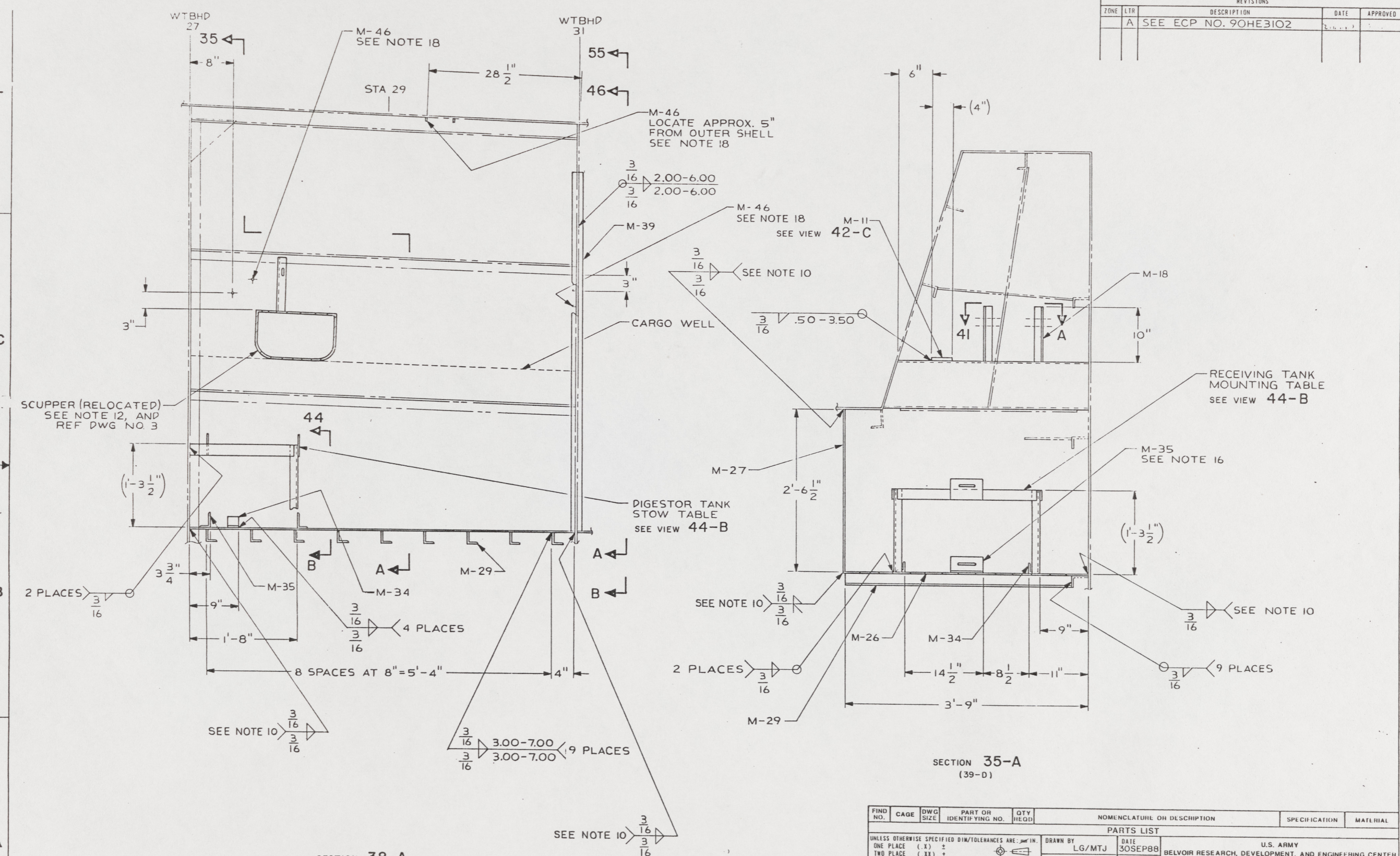
FIND NO.	CAGE	DWG SIZE	PART OR IDENTIFYING NO.	QTY REQD	NOMENCLATURE OR DESCRIPTION	SPECIFICATION	MATERIAL
UNLESS OTHERWISE SPECIFIED DIM/TOLERANCES ARE: $\pm$ IN.							
ONE PLACE (X) $\pm$		TWO PLACE (XX) $\pm$		THREE PLACE (XXX) $\pm$		ANGLES $\pm$	
DO NOT SCALE THIS DRAWING				FOR INTERPRETATION OF DRAWING 000-STD-100 APPLIES			
REMOVE BURRS AND SHARP EDGES TO				BREAK SHARP EDGES FILLET RADIUS TO			
MATERIAL				DESIGN APPROVAL			
APPROVED FOR PROCUREMENT				DATE			
PARTS LIST		DRAWN BY LG/MTJ		DATE 30SEP88		U.S. ARMY BELVOIR RESEARCH, DEVELOPMENT, AND ENGINEERING CENTER FORT BELVOIR, VIRGINIA 22060-5606	
CONTRACT NO.		CHECKED BY ST PRD		DATE 15 NOV 88		LCM-8, MOD I, MARINE SANITATION DEVICE	
SIZE A1		CAGE 97403		DWG NO. 13226E9468		SHEET 4	

32 31 30 29 28 27 26 25

72

40 39 38 37 36 35 34 33

REVISIONS				
ZONE	LTR	DESCRIPTION	DATE	APPROVED
	A	SEE ECP NO. 90HE3102		



SECTION 38-A  
(5-B)

SECTION 35-A  
(39-D)

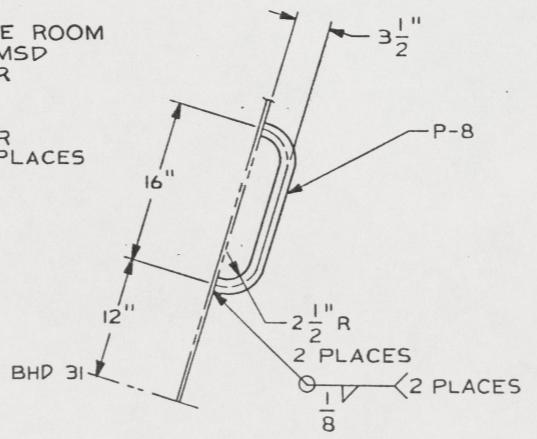
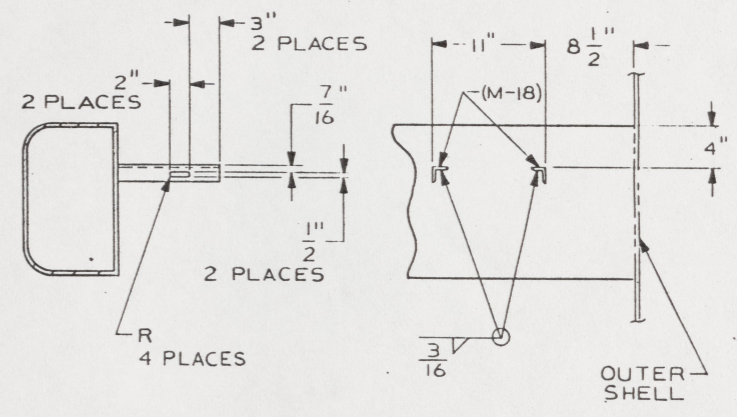
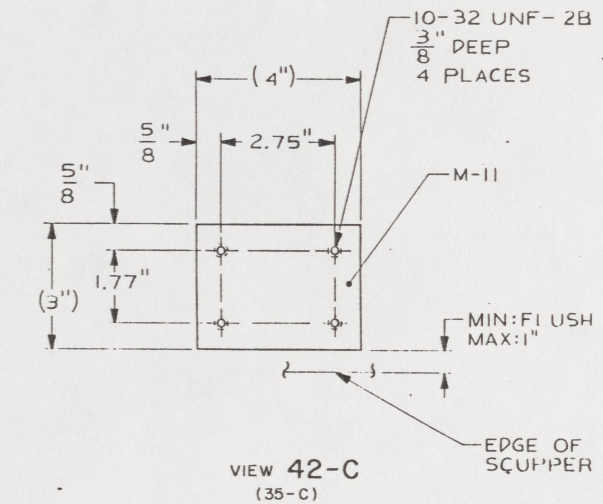
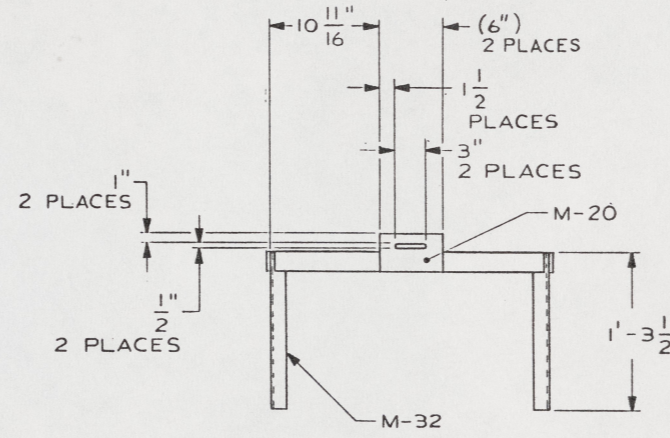
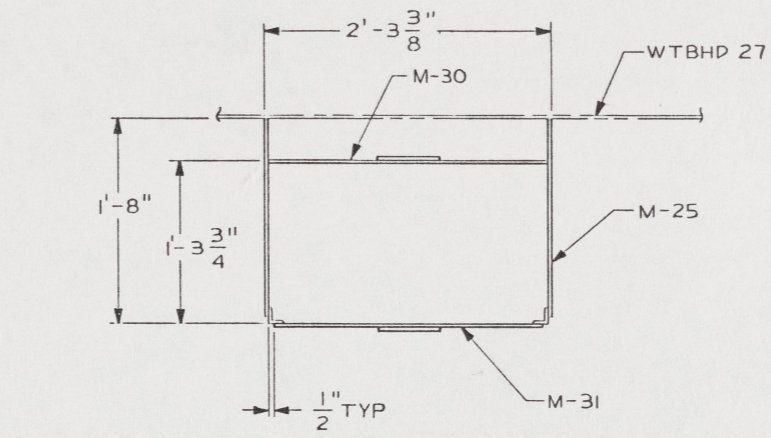
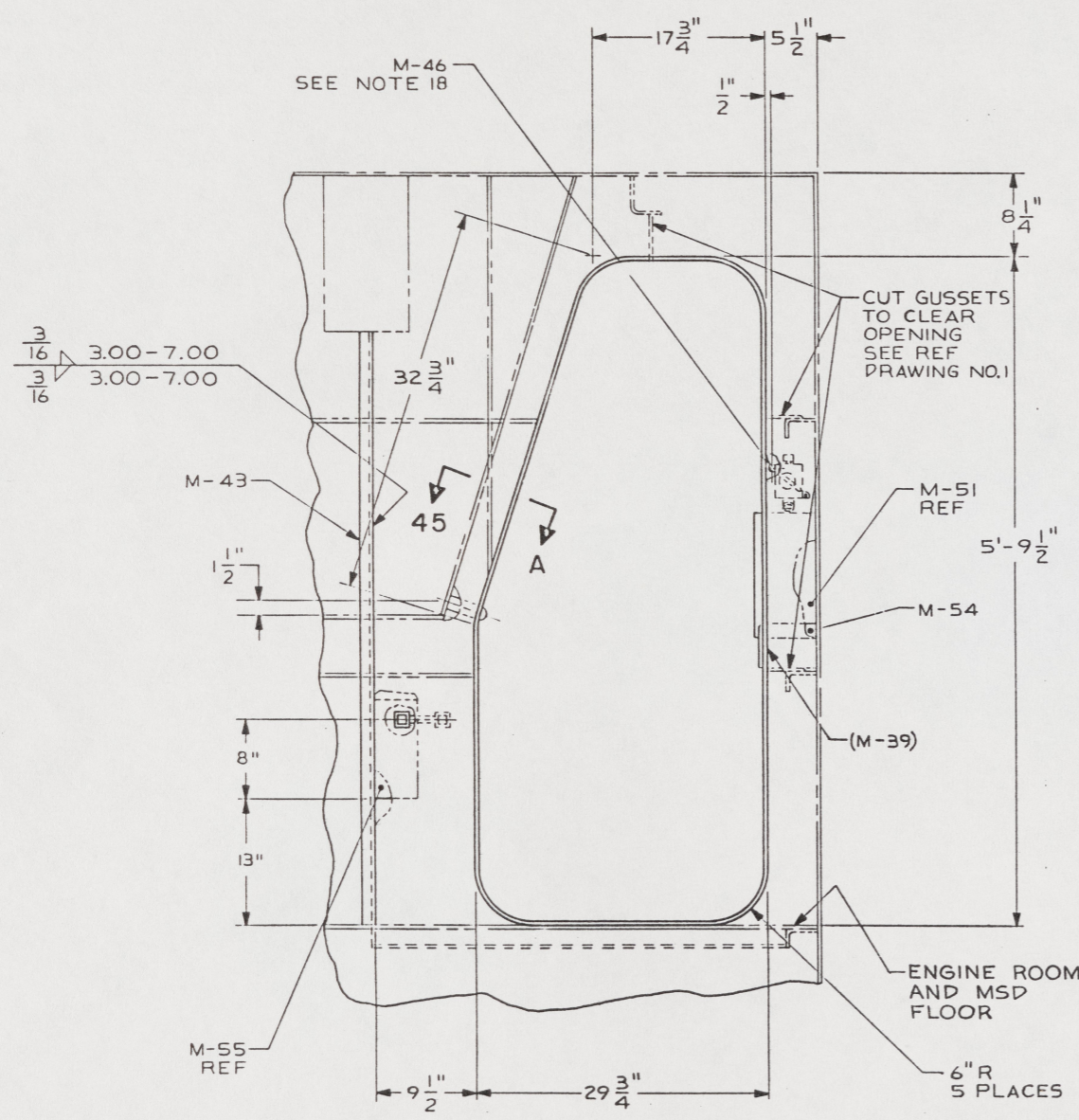
FIND NO.	CAGE	DWG SIZE	PART OR IDENTIFYING NO.	QTY REQD	NOMENCLATURE OR DESCRIPTION	SPECIFICATION	MATERIAL
UNLESS OTHERWISE SPECIFIED DIM/TOLERANCES ARE: IN.							
ONE PLACE (.X) ±				DRAWN BY LG/MTJ		DATE 30SEP88	
TWO PLACE (.XX) ±				CHECKED BY CT PRAD		DATE 15 NOV 88	
THREE PLACE (.XXX) ±				THIRD ANGLE PROJECTION		CONTRACT NO.	
ANGLES ±				DESIGN APPROVAL			
DO NOT SCALE THIS DRAWING				FOR INTERPRETATION OF DRAWING ODD-STD-100 APPLIES			
REMOVE BURRS AND BREAK SHARP EDGES				SHARP EDGES TO FILLET RADIUS TO			
MATERIAL				APPROVED FOR PROCUREMENT			
				DATE 22 OCT 88		SCALE	
				SIZE A1		CAGE 97403	
				DWG NO. 13226E9468		SHEET 5	

73

40 39 38 37 36 35 34 33

48 47 46 45 44 43 42 41

REVISIONS				
ZONE	LTR	DESCRIPTION	DATE	APPROVED
A		SEE ECP NO. 90HE3102		



FIND NO.	CAGE	DWG SIZE	PART OR IDENTIFYING NO.	QTY REQD	NOMENCLATURE OR DESCRIPTION	SPECIFICATION	MATERIAL
PARTS LIST							
UNLESS OTHERWISE SPECIFIED DIM/TOLERANCES ARE: ± IN.				DRAWN BY LG/MTJ DATE 30 OCT 88			
ONE PLACE (.X) ±				CHECKED BY GT PWS DATE 15 NOV 88			
TWO PLACE (.XX) ±				CONTRACT NO.			
THREE PLACE (.XXX) ±				DESIGN APPROVAL: [Signature] DATE 15 NOV 88			
ANGLES ±				APPROVED FOR PROCUREMENT: [Signature] DATE 20 OCT 88			
THIRD ANGLE PROJECTION				SIZE A1 CAGE 97403 DWG NO 13226E9468			
DO NOT SCALE THIS DRAWING				SCALE			
FOR INTERPRETATION OF DRAWING DOD-STD-100 APPLIES				SHEET 6			
REMOVE BURRS AND BREAK SHARP EDGES		SHARP EDGES TO FILLET RADIUS					

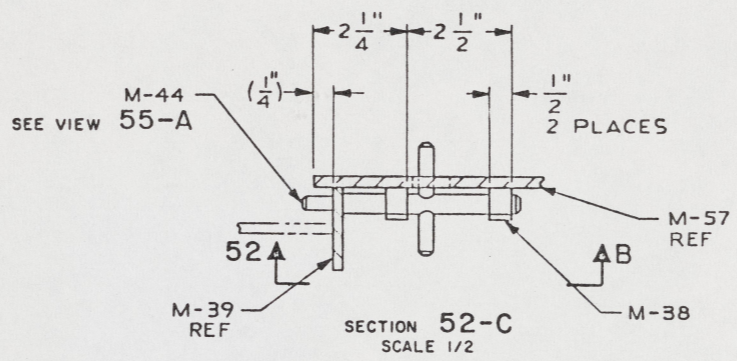
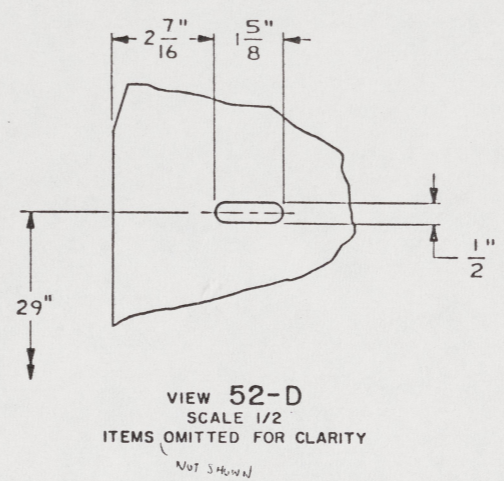
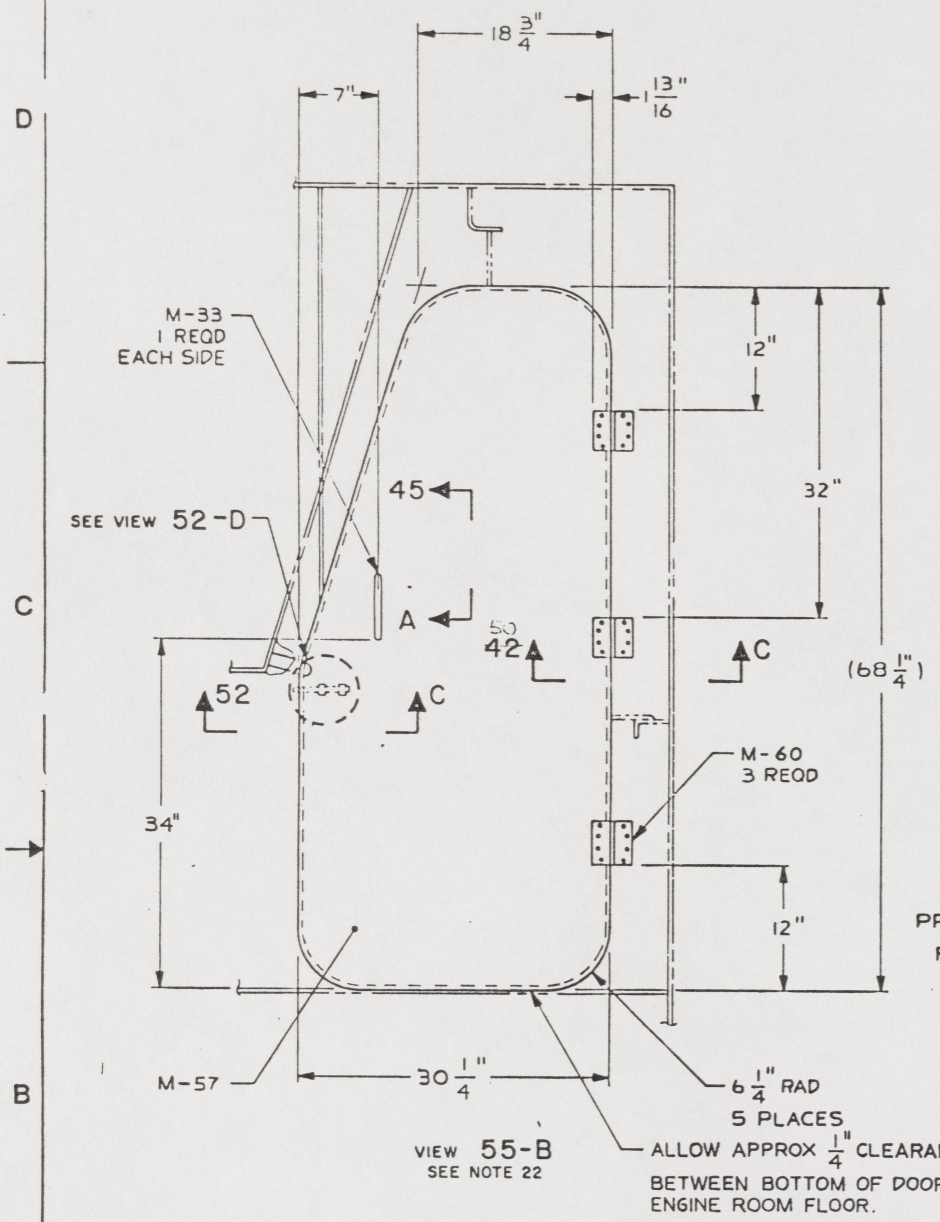
U.S. ARMY  
BELVOIR RESEARCH, DEVELOPMENT, AND ENGINEERING CENTER  
FORT BELVOIR, VIRGINIA 22060-5606

LCM-8, MOD 1,  
MARINE SANITATION DEVICE

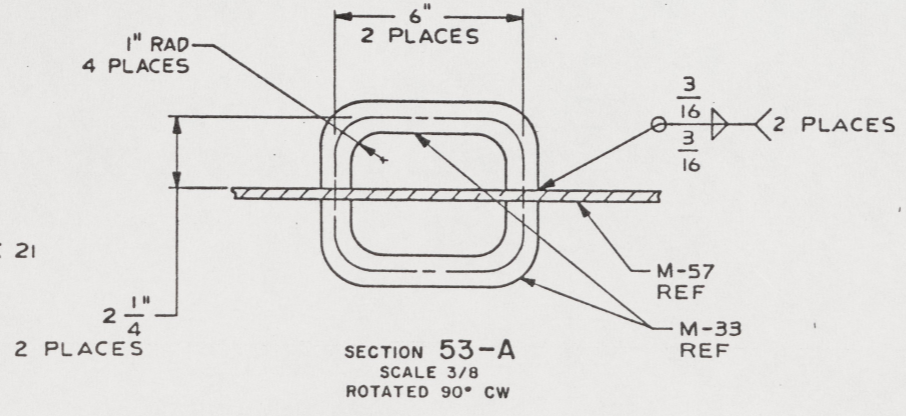
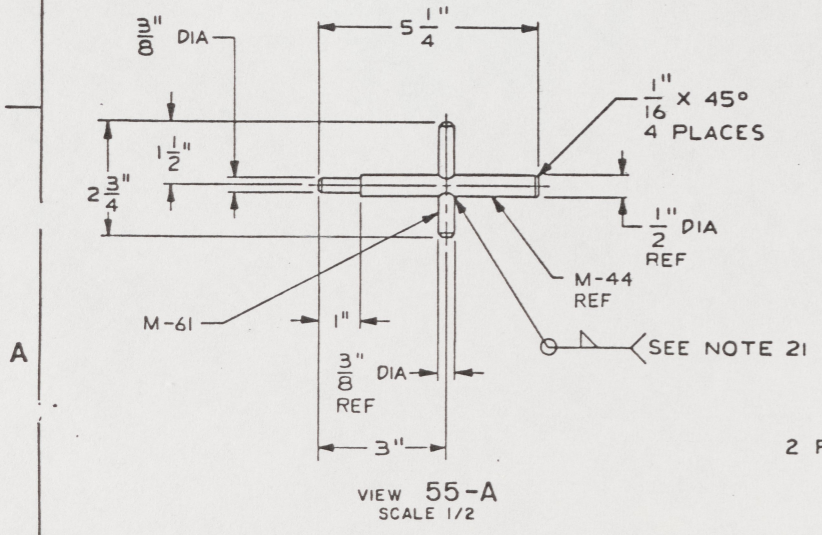
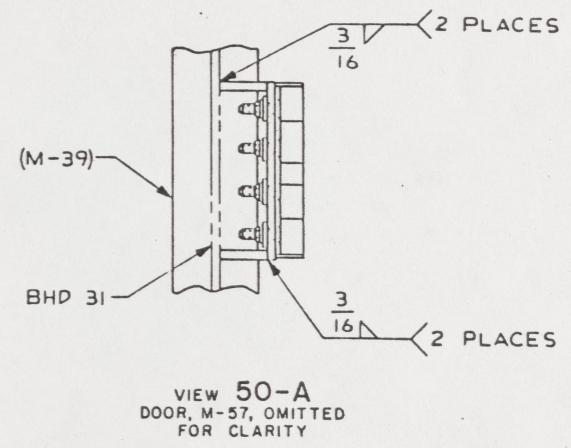
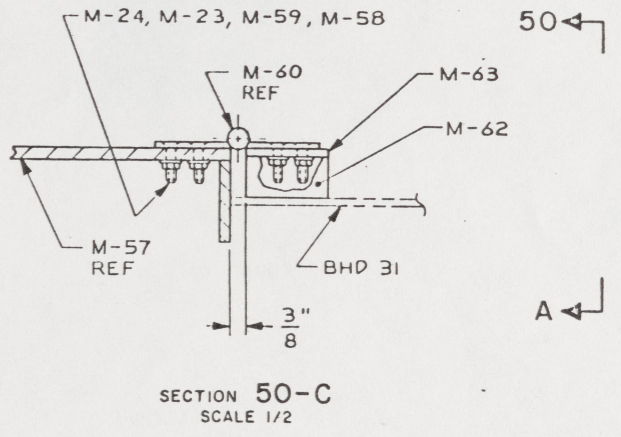
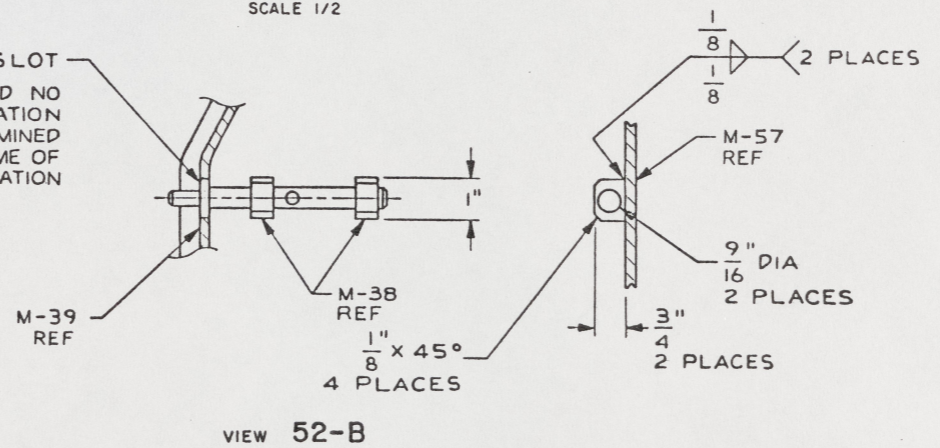
74

48 47 46 45 44 43 42 41

REVISIONS				
ZONE	LTR	DESCRIPTION	DATE	APPROVED
	A	SEE ECP NO. 90HE3102	12-10-88	ASST



PROVIDE A 1/2" x 1" SLOT  
FOR BAR, IN FIND NO  
M-39, LOCATION  
WILL BE DETERMINED  
AT TIME OF  
INSTALLATION



FIND NO.	CAGE	DWG SIZE	PART OR IDENTIFYING NO.	QTY REQD	NOMENCLATURE OR DESCRIPTION	SPECIFICATION	MATERIAL
UNLESS OTHERWISE SPECIFIED DIM/TOLERANCES ARE: IN.							
ONE PLACE (XX)	±						
TWO PLACE (XXX)	±						
THREE PLACE (XXX)	±						
ANGLES	±						
DO NOT SCALE THIS DRAWING				PARTS LIST			
FOR INTERPRETATION OF DRAWING GOO-STD-100 APPLIES				DRAWN BY LG/MTJ DATE 25OCT88			
REMOVE BURRS AND SHARP EDGES TO				CHECKED BY GT 7800 DATE 15JUN 88			
BREAK SHARP EDGES FILLET RADI				DESIGN APPROVAL [Signature] DATE 5 APR 89			
MATERIAL				APPROVED FOR PROCUREMENT [Signature] DATE 12 APR 89			
U.S. ARMY BELVOIR RESEARCH, DEVELOPMENT, AND ENGINEERING CENTER FORT BELVOIR, VIRGINIA 22060-5606						LCM-8, MOD I, MARINE SANITATION DEVICE	
SIZE A1		CAGE 97403		DWG NO 13226E9468		SHEET 7	

75