

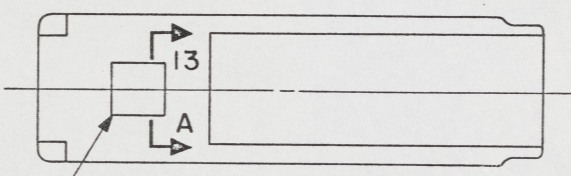
CSK

NOTES:

- REPAIR ALL PAINT DAMAGED BY THIS INSTALLATION AND PAINT ALL NEW STEEL IN ACCORDANCE WITH U.S. ARMY BULLETIN TB43-0144.
- EQUIPMENT AND WORKMANSHIP SHALL BE IN ACCORDANCE WITH USCG AND ABS REGULATIONS.
- SLIGHT DEVIATIONS FROM DIMENSIONS SHOWN ARE PERMISSIBLE TO SUIT ACTUAL CONDITIONS FOUND ABOARD THE VESSEL.
- MOUNTING HOLE PATTERN SHALL BE TEMPLATED FROM EXISTING MOUNTING PLATE OF RMHS COMPASS. (REF SPERRY INSTALLATION DRAWING NO. 4010716).
- MATERIAL ORDERED ON THIS DRAWING IS NOT INTENDED TO BE RESTRICTIVE. SUBSTITUTION OF EQUAL QUALITY MATERIAL MAY BE MADE EXCEPT ITEMS MARKED GFE.
- FIND NO. 8 SHALL CONSIST OF THE FOLLOWING:
 - CONTROL HEAD, NO. 2048-M (FOR 3" STROKE), 1 REQD
 - NEUTRAL SAFETY SWITCH (INSTALLED), NO. 2046-0903, 2 REQD
 - CONNECTOR KIT, 1/4-28, NO. 2046-0902, 2 REQD
 - LABELS, NO. 2046-0015, 2 REQD
 - THROTTLE EXTENSION KIT, NO. 2046-0906, 2 REQD.
- SHUTDOWN HEADS TO BE SALVAGED FROM EXISTING BOAT, SEE REF 2 FOR CONNECTIONS TO ENGINE.
- COMPONENTS SHOWN BY SOLID, HEAVY LINES ARE NEW, ORDERED AND INSTALLED IN ACCORDANCE WITH THIS DRAWING. PHANTOM LINES INDICATE COMPONENTS EXISTING OR ORDERED ON AND INSTALLED BY DRAWINGS REFERENCED AS NOTED.
- REMOVE FLAT BAR AND REMAINDER OF (2) ANGLES, 2 PLACES. GRIND AREA FLUSH TO BARE METAL.
- ENGRAVE LINE AND CHARACTERS .010 MIN DEEP. CHARACTERS TO BE LOCATED APPROXIMATELY AS SHOWN. FILL ENGRAVING WITH BLACK ENAMEL.
- ALL FABRICATION WELDING AND INSPECTION TO BE IN ACCORDANCE WITH NAVSEA 0900-LP-014-5010, WELD SIZES BASED ON USE OF AWS A5.4, CLASS E3086 ELECTRODES FOR CRES STEEL TO CRES STEEL OR AWS A5.1, CLASS E7018 ELECTRODES FOR LC STEEL TO LC STEEL.
- MACHINE ONE LEG OF ANGLES, FIND NO. 14, 15 AND 16, TO 5/8 INCH WIDTH. THIS LEG WILL BE THE HORIZONTAL LEG OF THE TWO FRAMES SHOWN ON DETAIL 21-A, SH 3.

REFERENCE DRAWINGS		
NO.	DRAWING NO.	TITLE
1	145-4510932	PILOT HOUSE ARRANGEMENT AND DETAILS
2	13226E9451	LCM 8, MOD-1, ENGINE CONTROL ARRANGEMENT
3	13226E9476	LCM 8, MOD-1, POWER LIGHTING AND IC SYSTEM

SHEETS						STATUS OF REVISIONS			
6	5	4	3	2	ZONE	LTR	DESCRIPTION	DATE	APPROVED
-	-	-	-	-		A	SEE ECP NO. 90HE2102	10 MAR 80	DMS
-	-	-	-	-		B	SEE ECP NO. 90HE3309	14 MAR 81	DMS

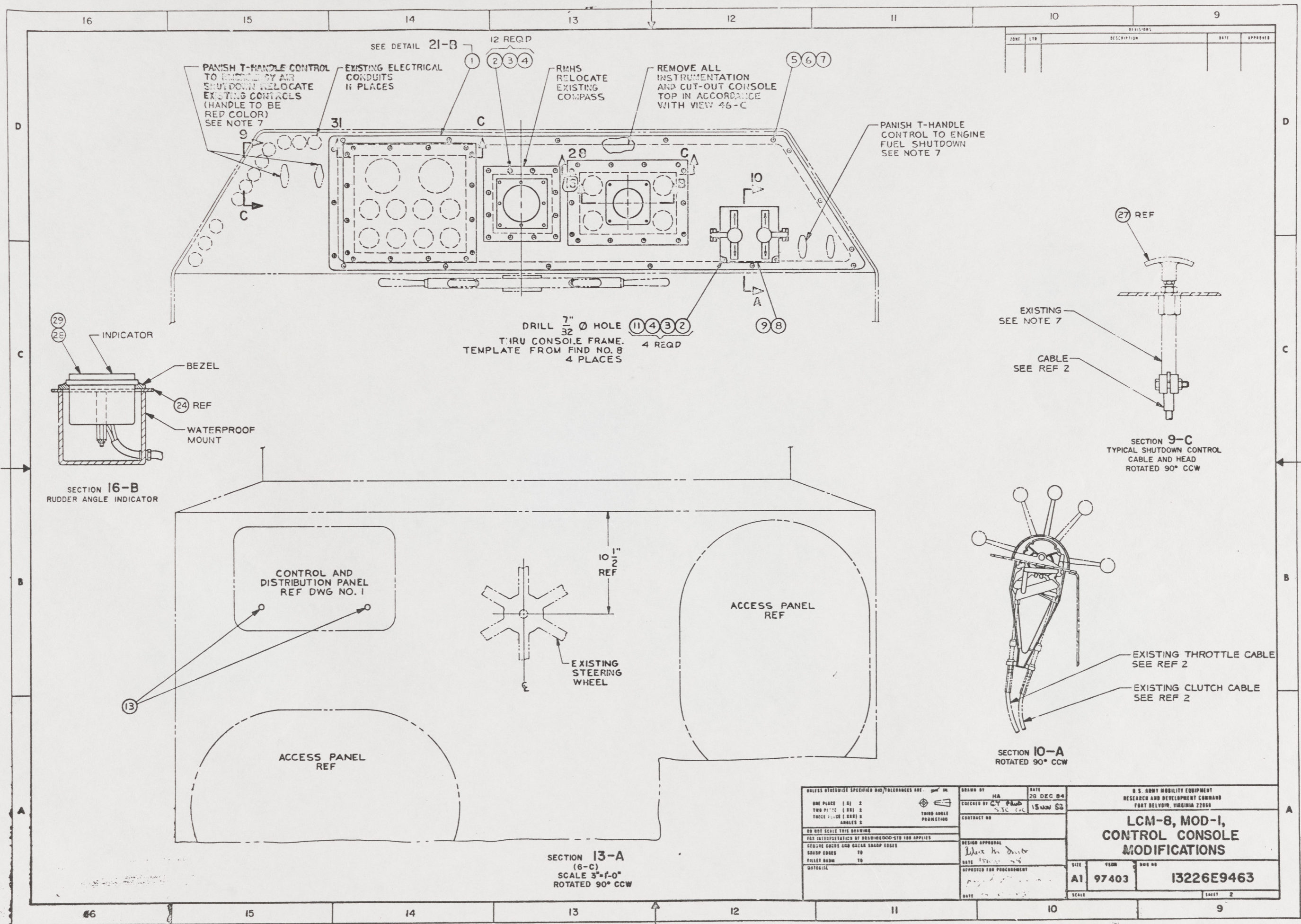


PILOT HOUSE REF
KEY VIEW 5-B
SCALE NONE

YARD	FIND NO.	FSCM	DWG SIZE	PART OR IDENTIFYING NO.	QTY REQD	NOMENCLATURE OR DESCRIPTION	SPECIFICATION	MATERIAL
---	29			MS51960-67	4	SCREW, FLAT HD, NO. 10-32 UNF-2A X 3/4" LG		CRES
---	28			ORD ON REF 3	REF	RUDDER ANGLE INDICATOR		
---	27	86376		C2707	REF	ENGINE SHUT DOWN CONTROL HEAD (PANISH) SEE NOTE 7	COML	COPPER ALY
YARD	26			MS27130-CR133	17	NUT, BLIND RIVET, CSK HD, 1/4"-20 X 11/16" LG		CRES
YARD	25			MS27130-CR128	12	NUT, BLIND RIVET, CSK HD, NO. 10-24 X 5/8" LG		CRES
YARD	24			TYPE 316	1	SHEET, .120 X 11" X 7 1/4"	ASTM A167	CRES
YARD	23			ITEM A, TYPE III, GRADE A	1	SHEET, CLEAR, 12 3/8" X 8 5/8" X 3/16" STK	L-P-391	ACRYLIC
YARD	22			MS24629-46, TYPE D	22	SCREW, TAPPING, THD CUTTING, PAN HD, NO. 10 X 1/2 LG		STL CAD PL
YARD	21			TYPE 316	1	SHEET, .120 X 12 1/2" X 11"	ASTM A167	CRES
YARD	20			TYPE II	AR	ADHESIVE	MM-A-1617	
YARD	19			M1BC510	AR	SHEET, 1/16" STK	ASTM D2000	RUBBER
YARD	18			ITEM A, TYPE III, GRADE A	1	SHEET, CLEAR, 13 7/8" X 12 3/8" X 3/16" STK	L-P-391	ACRYLIC
YARD	17			MS24629-47, TYPE D	30	SCREW, TAPPING, THD CUTTING, PAN HD, NO. 10 X 5/8" LG		STL CAD PL
YARD	16			TYPE 316	2	ANGLE, 3/4" X 3/4" X 1/8" X 13 7/8" LG (SEE NOTE 12)	ASTM A276	CRES
YARD	15			TYPE 316	2	ANGLE, 3/4" X 3/4" X 1/8" X 8 5/8" LG (SEE NOTE 12)	ASTM A276	CRES
YARD	14			TYPE 316	4	ANGLE, 3/4" X 3/4" X 1/8" X 12 3/8" LG (SEE NOTE 12)	ASTM A276	CRES
YARD	13	83330		653	2	HOLE PLUG, SNAP BUTTON, 1/2" HOLE (H. H. SMITH)	COML	STL, N PL
YARD	12				2	PLATE, 3/16 STK	ASTM A36	STEEL
YARD	11			MS35649-204	4	NUT, HEX, NO. 10-24 UNC-2B		CRES
YARD	10				4	PLATE, 3/16 STK	ASTM A36	STEEL
YARD	9			M1BC510	1	SHEET, 1/8 STK	ASTM D2000	RUBBER
GFE	8	38658		SEE NOTE 6	1	TWIN ENG SINGLE LEVER CONTROL HD (KOBELT)	COML	
YARD	7			MS15795-810	17	WASHER, FLAT, .281 ID X .625 OD		CRES
YARD	6			MS35338-139	17	WASHER, LOCK-SPRING, 1/4 NOM SIZE		CRES
YARD	5			MS51957-83	17	SCREW, PAN HD, CRES, 1/4-20 UNC X 1" LG		CRES
YARD	4			MS15795-842	16	WASHER, FLAT, .219 ID X .500 OD		CRES
YARD	3			MS35338-138	16	WASHER, LOCK-SPRING, NO. 10 NOM SIZE		CRES
YARD	2			MS51957-67	16	SCREW, PAN HD, CRES, NO. 10-24 UNC-2A X 1" LG		CRES
YARD	1			TYPE 316	1	SHEET, 11 GA (.1200)	ASTM A167	CRES

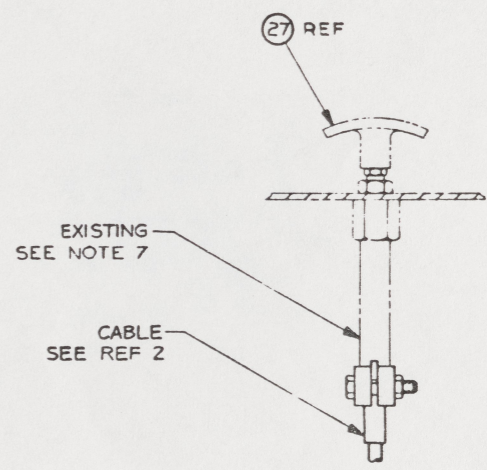
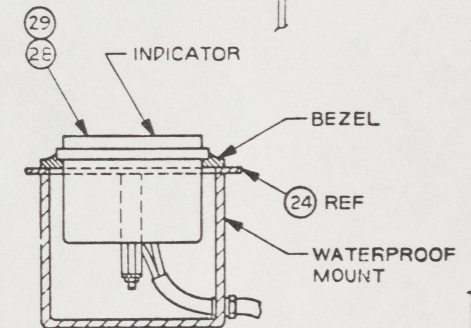
THIS DRAWING APPLIES TO HULL NUMBERS 8540 THROUGH 8560 AND 8580 THROUGH 8618 ONLY

UNLESS OTHERWISE SPECIFIED DIM/TOLERANCES ARE: .001 IN.		DRAWN BY RJE/HA		DATE 28 DEC 84		U.S. ARMY	
ONE PLACE (.I) ±	—	THIRD ANGLE PROJECTION		CHECKED BY CTT/ROD		BELVOIR RESEARCH, DEVELOPMENT, AND ENGINEERING CENTER	
TWO PLACE (.XX) ±	—			DATE 15 NOV 88		FORT BELVOIR, VIRGINIA 22060-5606	
THREE PLACE (.XXX) ±	—			CONTRACT NO.		LCM-8, MOD-1, CONTROL CONSOLE MODIFICATIONS	
ANGLES ±	—			DESIGN APPROVAL		APPROVED FOR PROCUREMENT	
DO NOT SCALE THIS DRAWING				DATE 17 FEB 89		SIZE A1	
FOR INTERPRETATION OF DRAWING DOD-STD-100 APPLIES				DATE 15 NOV 88		FSCM 97403	
REMOVE BURRS AND SHARP EDGES TO TO				DATE 15 NOV 88		DWG NO. 13226E9463	
BREAK SHARP EDGES FILLET RADIUS TO TO				DATE 15 NOV 88		SCALE 1/2	
MATERIAL				DATE 15 NOV 88		SHEET 1 OF 6	

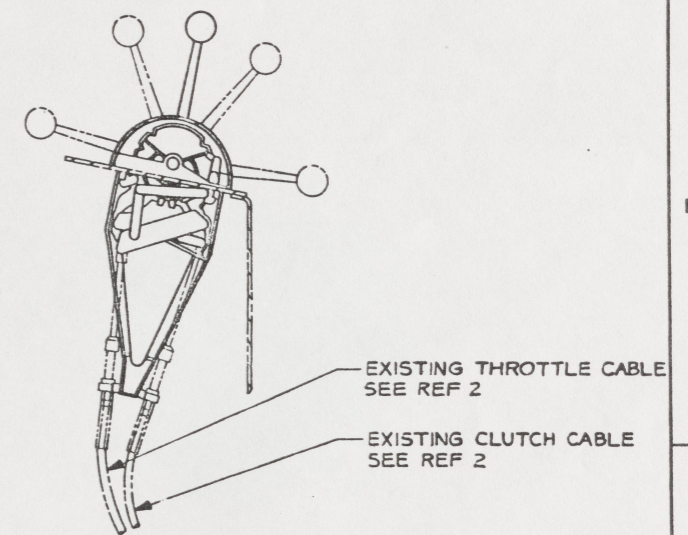


REVISIONS				
NO.	DATE	DESCRIPTION	BY	APP'D

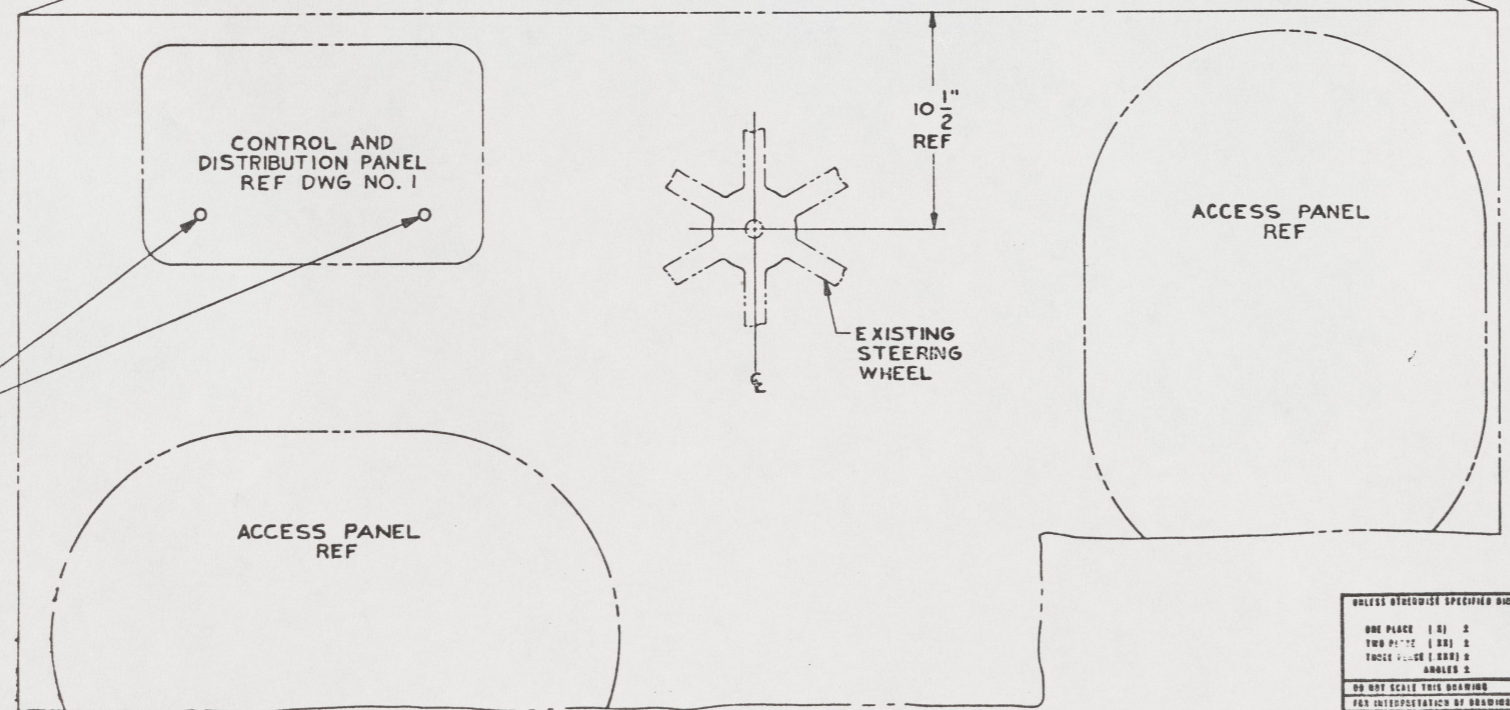
SECTION 16-B
RUDDER ANGLE INDICATOR



SECTION 9-C
TYPICAL SHUTDOWN CONTROL
CABLE AND HEAD
ROTATED 90° CCW



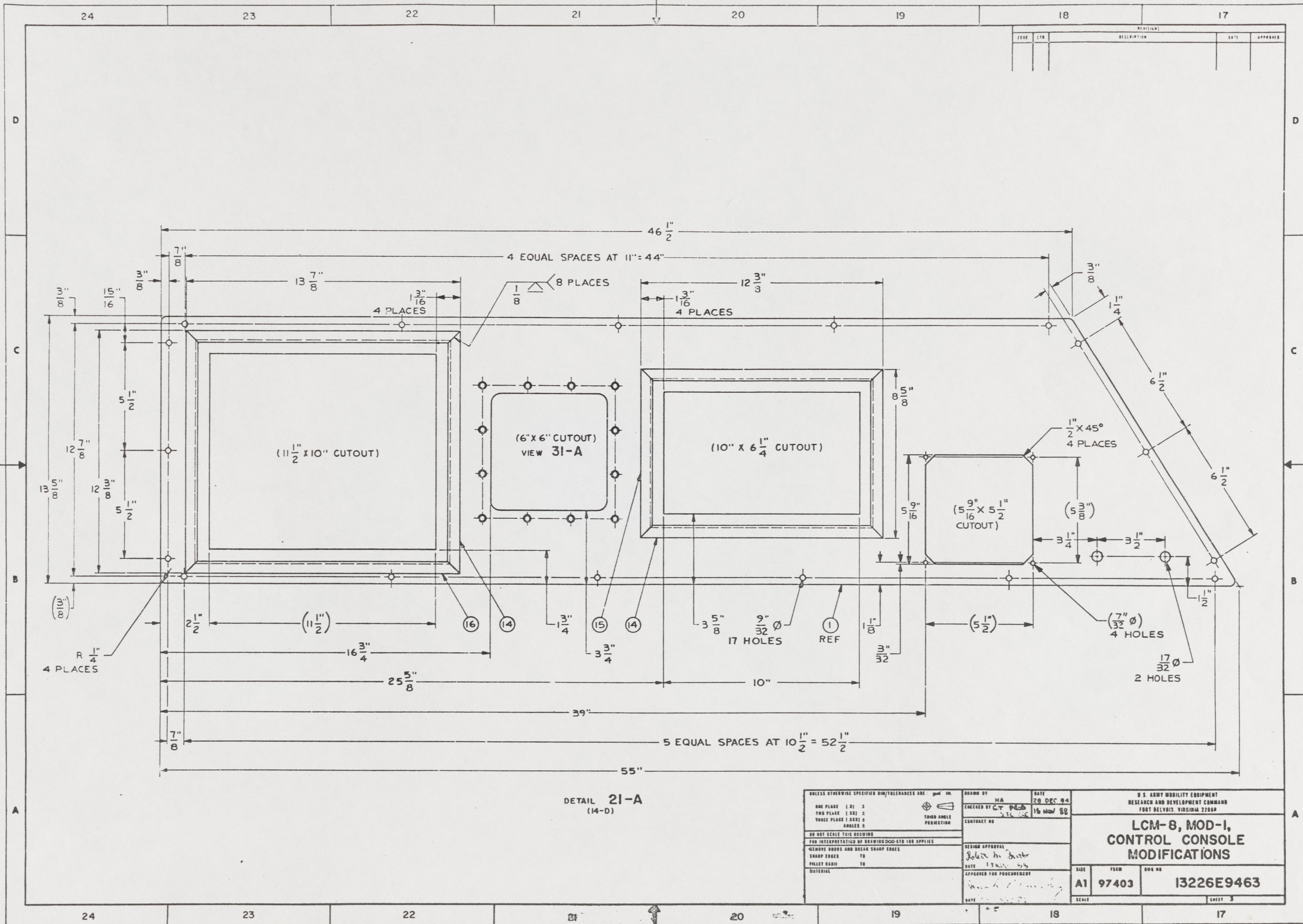
SECTION 10-A
ROTATED 90° CCW



SECTION 13-A
(6-C)
SCALE 3"=1'-0"
ROTATED 90° CCW

UNLESS OTHERWISE SPECIFIED DIM/TOLERANCES ARE:		DRAWN BY	MA	DATE	20 DEC 84	U.S. ARMY MOBILITY EQUIPMENT RESEARCH AND DEVELOPMENT COMMAND FORT BELVOIR, VIRGINIA 22060	
ONE PLACE (1.0)	2	CHECKED BY	MA	DATE	15 NOV 83	LCM-8, MOD-1, CONTROL CONSOLE MODIFICATIONS	
TWO PLACES (1.00)	2	CONTRACT NO.					
THREE PLACES (1.000)	3	DESIGN APPROVAL		DATE		SIZE	YOUNG
FOUR PLACES (1.0000)	4	APPROVED FOR PROCUREMENT		DATE		A1	97403
FIVE PLACES (1.00000)	5	DATE				13226E9463	
SIX PLACES (1.000000)	6					SCALE	SHEET 2

51

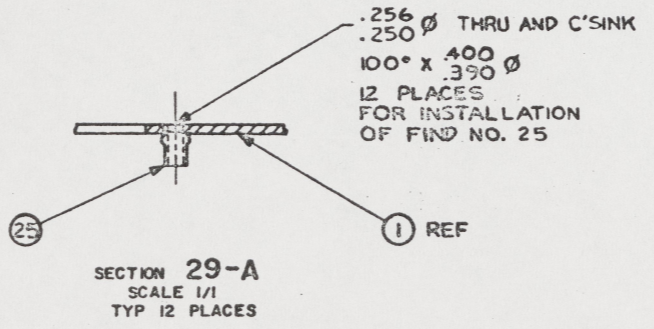
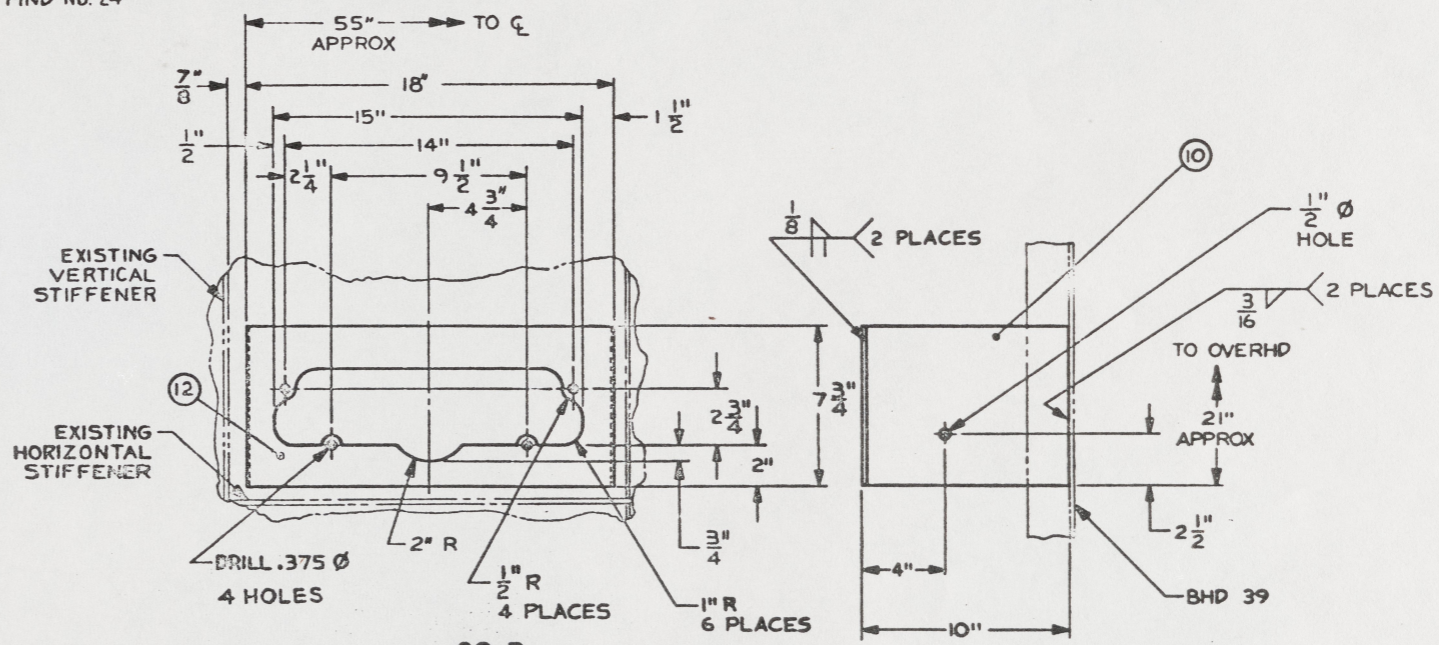
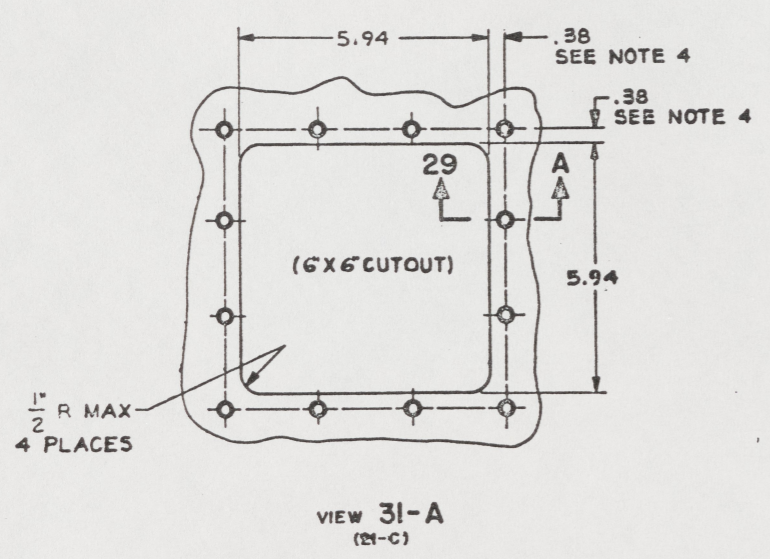
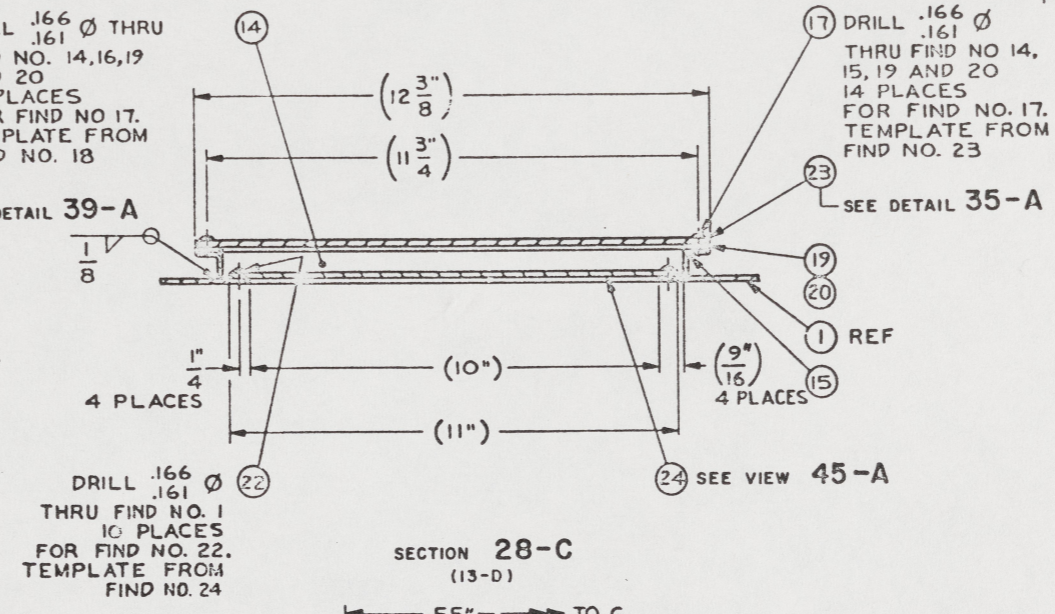
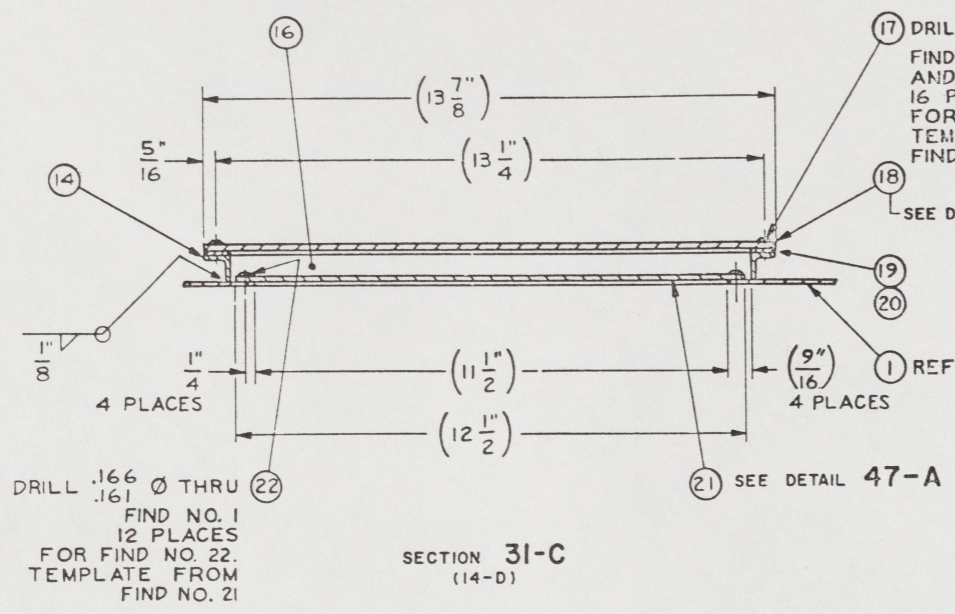


DETAIL 21-A
(14-D)

UNLESS OTHERWISE SPECIFIED DIM/TOLERANCES ARE: $\frac{1}{16}$ IN.		DRAWN BY: HA	DATE: 28 DEC 84	U.S. ARMY MOBILITY EQUIPMENT RESEARCH AND DEVELOPMENT COMMAND FORT BELVOIR, VIRGINIA 22060	
ONE PLACE (1X) 3	TWO PLACE (2X) 2	CHECKED BY: <i>[Signature]</i>	DATE: 16 Nov 88	LCM-8, MOD-1, CONTROL CONSOLE MODIFICATIONS	
THREE PLACE (3X) 2	FOUR PLACE (4X) 2	CONTRACT NO:	SCALE:		
DO NOT SCALE THIS DRAWING	FOR INTERPRETATION OF DIMENSIONS SEE THE APPROPRIATE	DESIGN APPROVAL:	DATE: 17 MAR 85	SHEET: A1	TSCN: 97403
REMOVE BURRS AND BREAK SHARP EDGES	SHARP EDGES TO	APPROVED FOR PRODUCTION:	DATE: 17 MAR 85	BOOK NO:	13226E9463
FILLET RADIUS TO	MATERIAL:			SCALE:	SHEET: 3

52

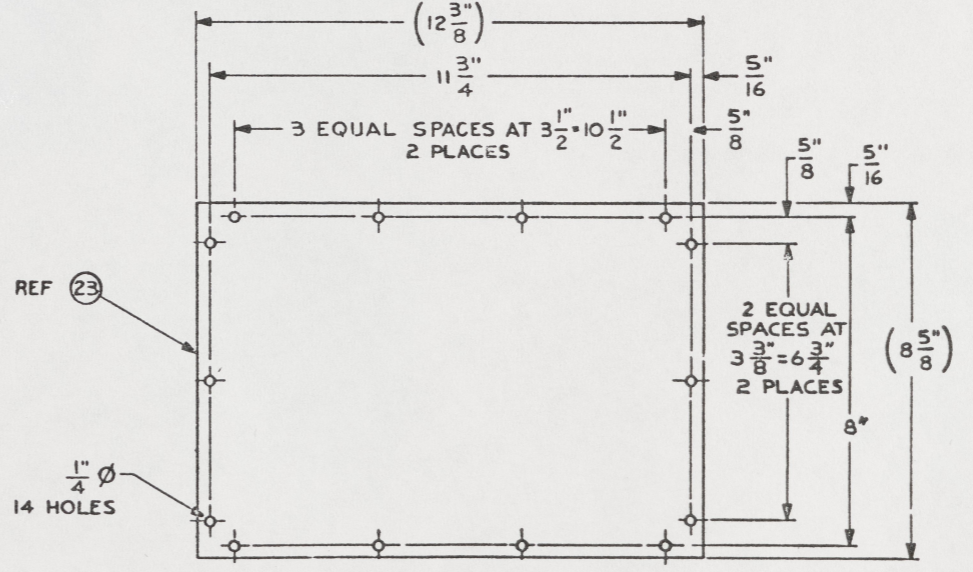
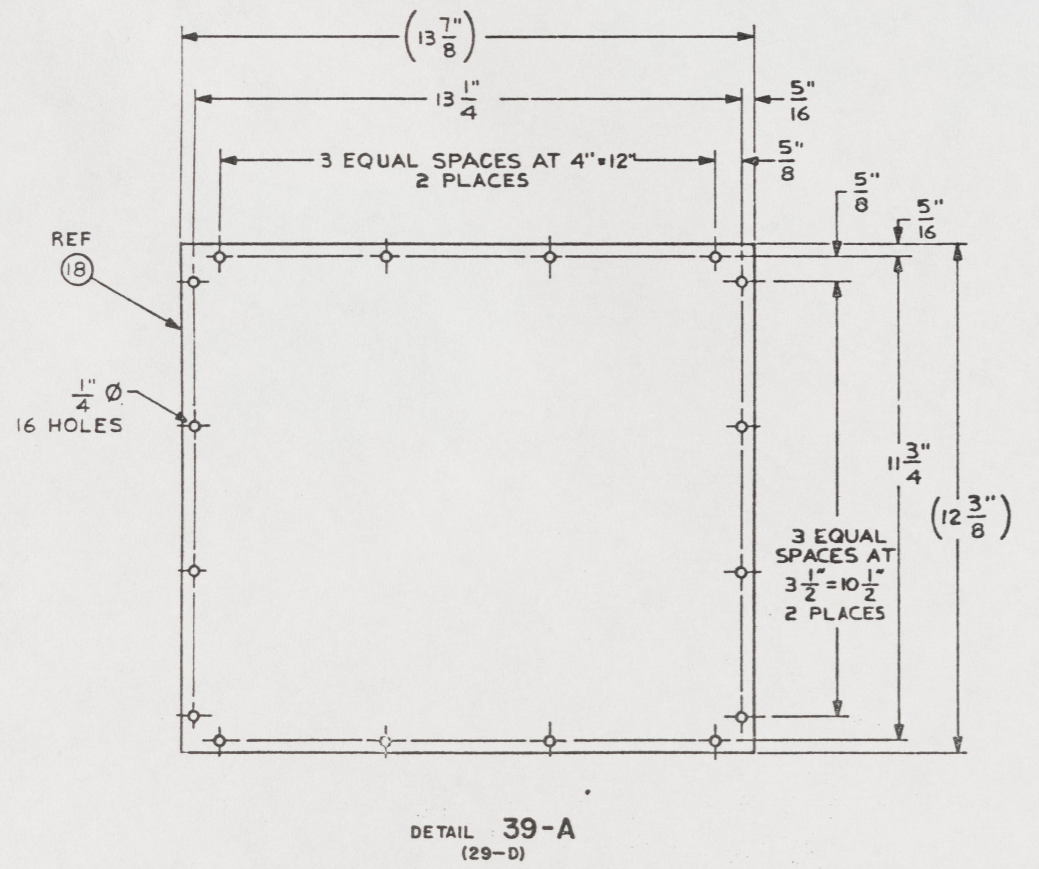
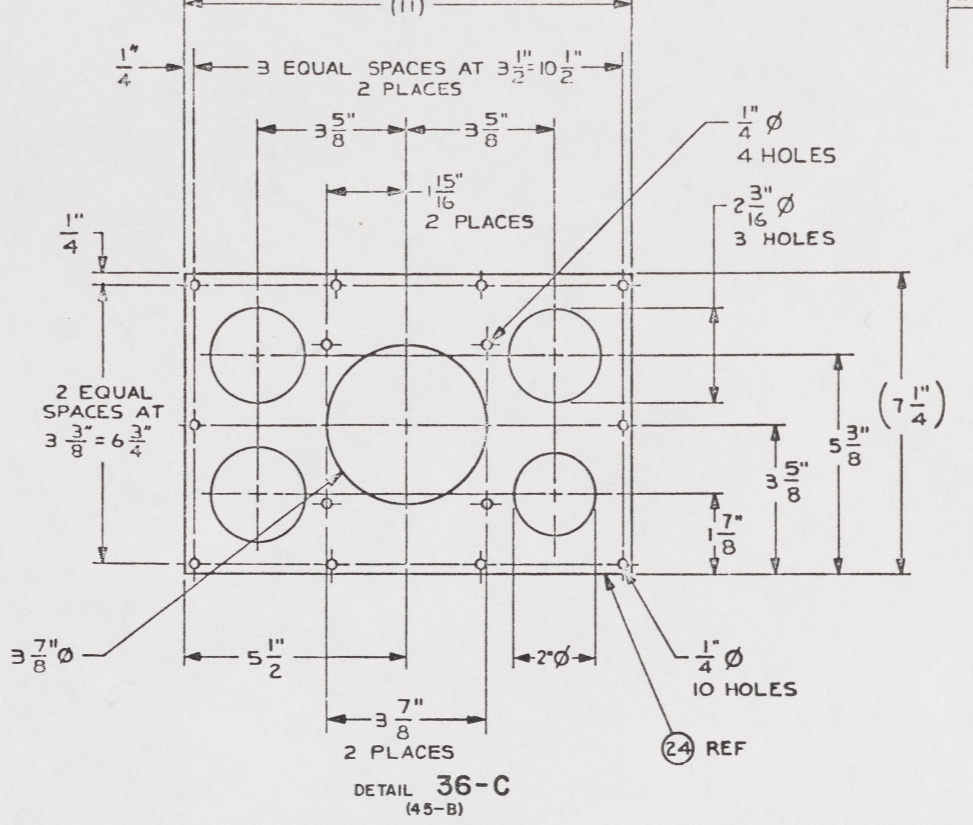
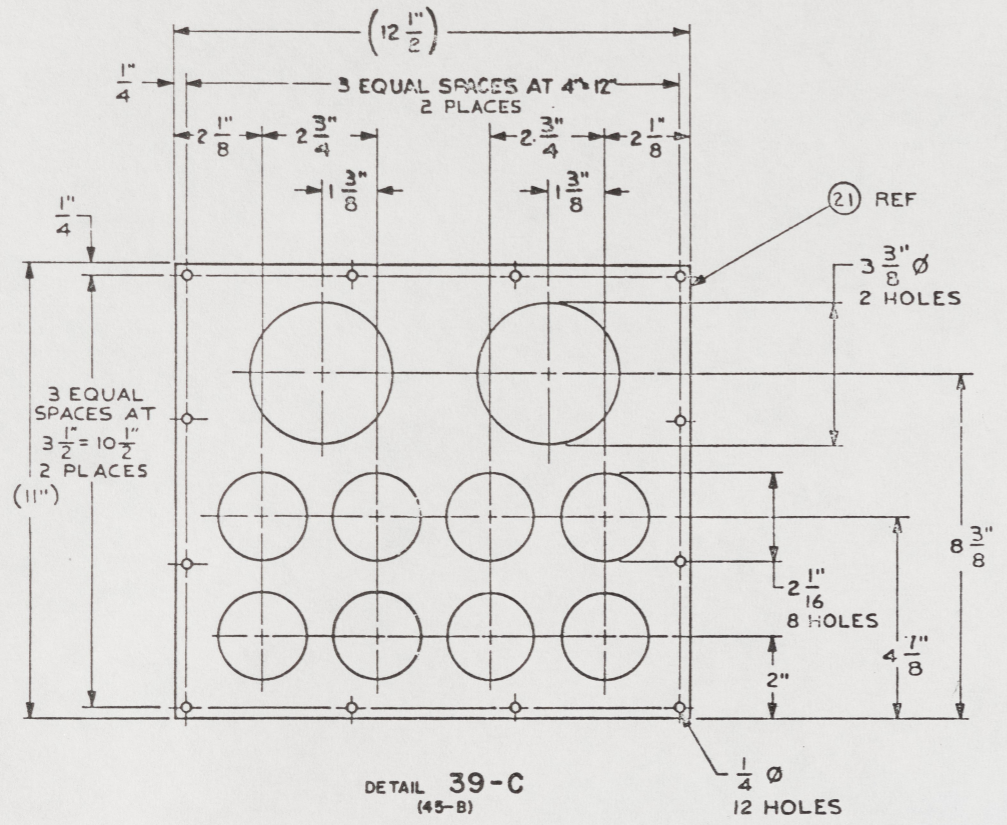
REVISIONS				
ZONE	LTR	DESCRIPTION	DATE	APPROVED



UNLESS OTHERWISE SPECIFIED DIM/TOLERANCES ARE: 3RD IN.		DESIGNED BY: HA	DATE: 28 DEC 64	U.S. ARMY MOBILITY EQUIPMENT RESEARCH AND DEVELOPMENT COMMAND FORT BELVOIR, VIRGINIA 22060	
ONE PLACE (.XX) ±	TWO PLACE (.XX) ±	CHECKED BY: G.T. PUGH	DATE: 15 NOV 68	LCM-8, MOD-1, CONTROL CONSOLE MODIFICATIONS	
THREE PLACE (.XXX) ±	FOUR PLACE (.XXXX) ±	CONTRACT NO:	SCALE: A1		
DO NOT SCALE THIS DRAWING		DESIGN APPROVAL: <i>Robert M. Dwyer</i>		DATE: 15 NOV 68	13226E9463 SCALE: 4 SHEET 4
REMOVE BURRS AND BREAK SHARP EDGES		APPROVED FOR PROCUREMENT: <i>Joseph R. Wierching</i>		DATE: 15 NOV 68	
SHARP EDGES TO FILET RADIUS TO		MATERIAL:			

53

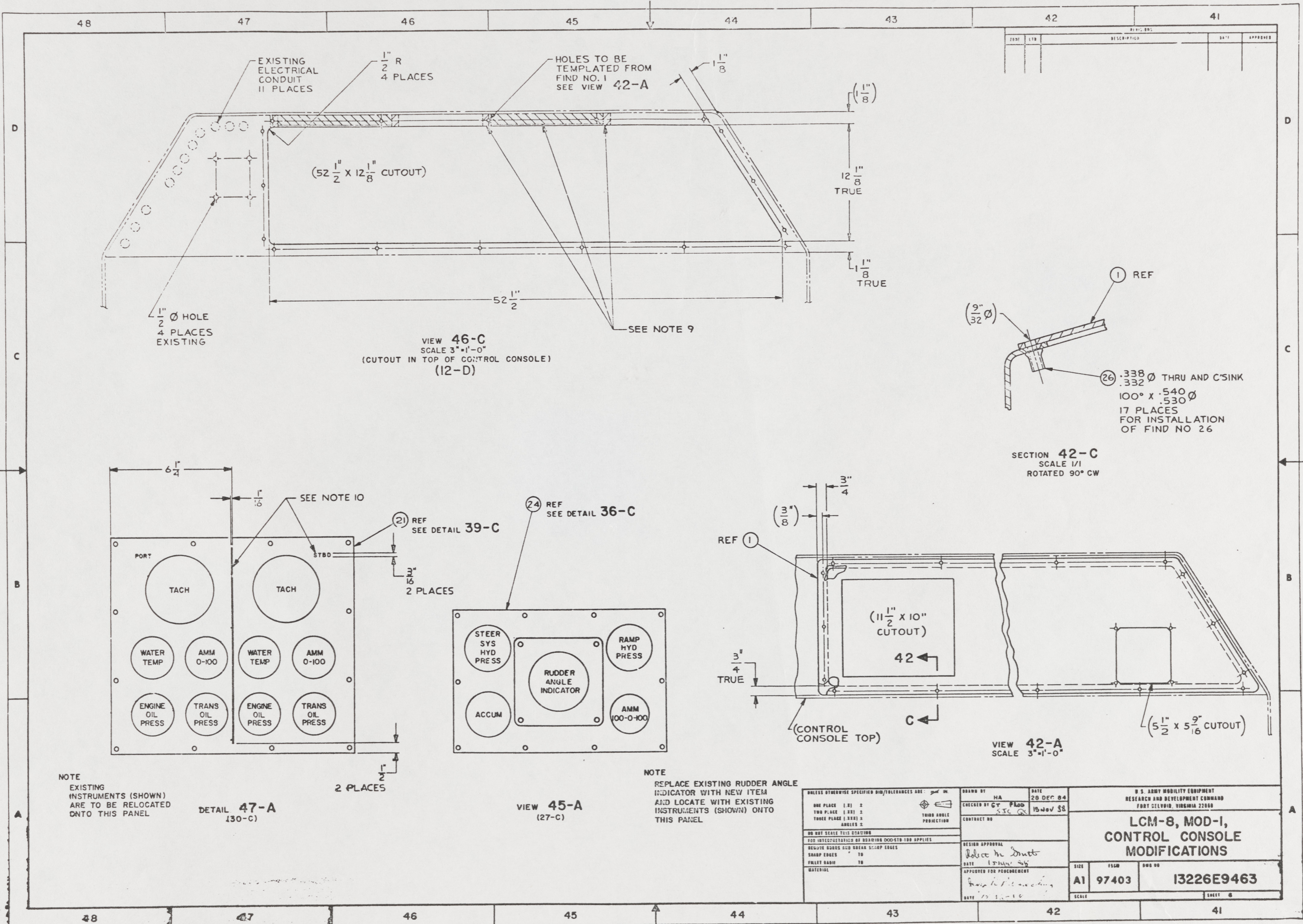
REVISIONS				
ZONE	LTR	DESCRIPTION	DATE	APPROVED



DETAIL 35-A
(28-D)

UNLESS OTHERWISE SPECIFIED DIM/TOLERANCES ARE: $\frac{1}{16}$ IN.	DRAWN BY: HA	DATE: 28 DEC 84	U.S. ARMY MOBILITY EQUIPMENT RESEARCH AND DEVELOPMENT COMMAND FORT BELVOIR, VIRGINIA 22060
ONE PLACE (.01) 3 TWO PLACE (.001) 2 THREE PLACE (.0001) 2 FOUR PLACE (.00001) 2 ANGLES 2	CHECKED BY: C.F. PLOD SIC GEL	15 NOV 88	
DO NOT SCALE THIS DETAILING	DESIGN APPROVAL: Robert M. Smith	DATE: 17 MAR 85	SIZE: A1
FOR DIMENSIONS OF BOLTING DO NOT APPLY	APPROVED FOR PRODUCTION: Joseph R. ...	DATE: 15 NOV 88	PSCW: 97403
REMOVE BURRS AND BREAK SHARP EDGES			DWG NO: 13226E9463
SHARP EDGES TO			SCALE: SHEET 5
FILLET RADIUS TO			
MATERIAL			

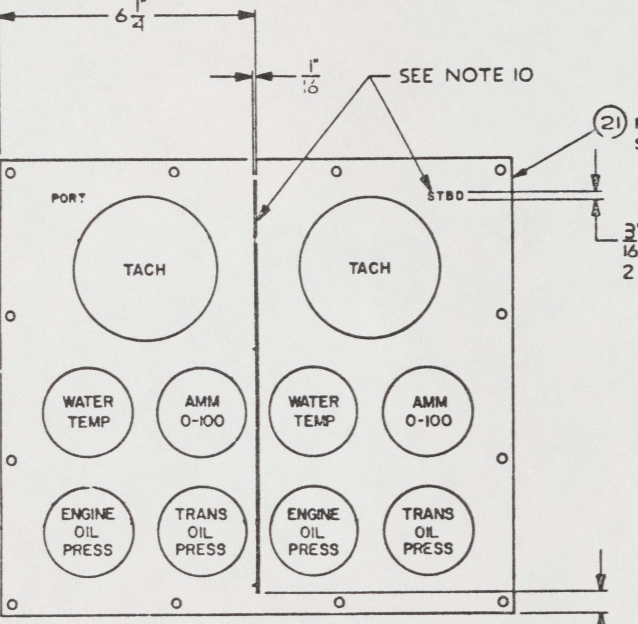
57



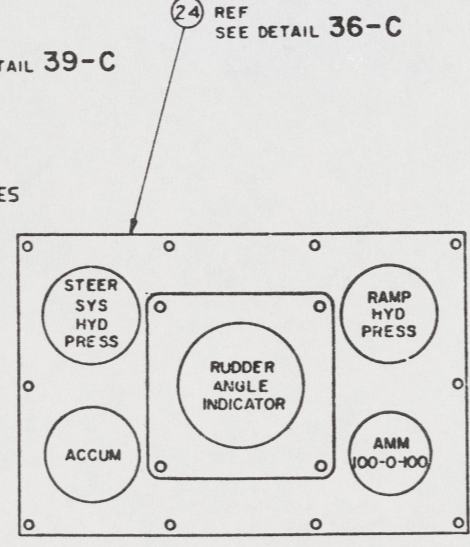
NO.	DATE	DESCRIPTION	BY	APPROVED

VIEW 46-C
SCALE 3"=1'-0"
(CUTOUT IN TOP OF CONTROL CONSOLE)
(12-D)

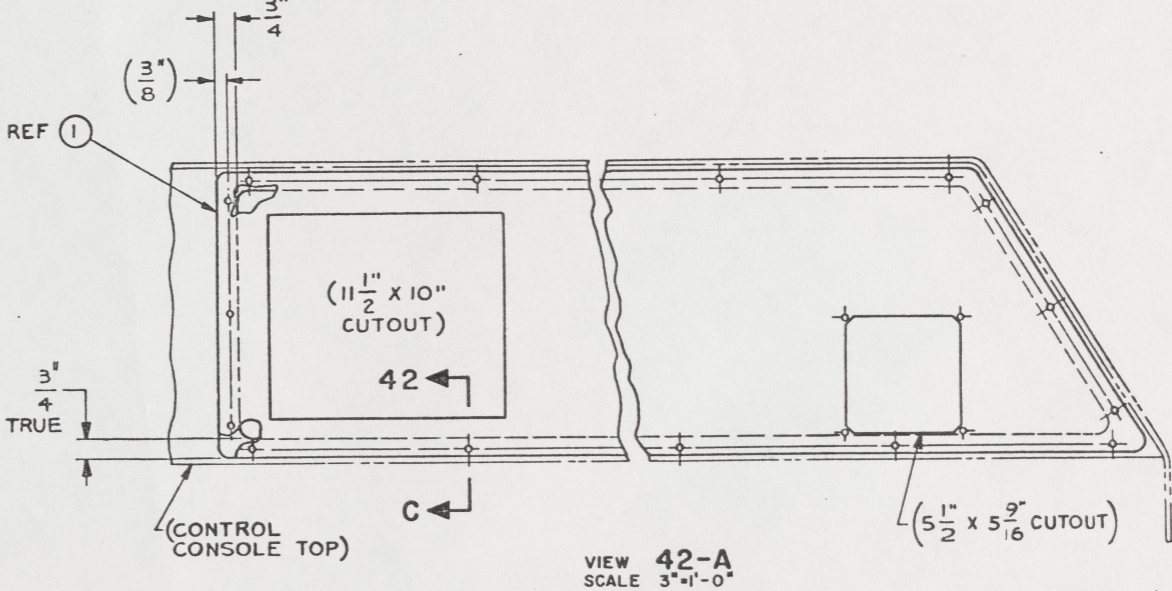
SECTION 42-C
SCALE 1/1
ROTATED 90° CW



DETAIL 47-A
(30-C)



VIEW 45-A
(27-C)



VIEW 42-A
SCALE 3"=1'-0"

NOTE
EXISTING INSTRUMENTS (SHOWN) ARE TO BE RELOCATED ONTO THIS PANEL

NOTE
REPLACE EXISTING RUDDER ANGLE INDICATOR WITH NEW ITEM AND LOCATE WITH EXISTING INSTRUMENTS (SHOWN) ONTO THIS PANEL

ONE PLACE (±)	±	THIRD ANGLE PROJECTION	DESIGN APPROVAL	DATE
TWO PLACE (±±)	±±		APPROVED FOR PRODUCTION	DATE
THREE PLACE (±±±)	±±±			
FOUR PLACE (±±±±)	±±±±			
FIVE PLACE (±±±±±)	±±±±±			
SIX PLACE (±±±±±±)	±±±±±±			
SEVEN PLACE (±±±±±±±)	±±±±±±±			
EIGHT PLACE (±±±±±±±±)	±±±±±±±±			
NINE PLACE (±±±±±±±±±)	±±±±±±±±±			
TEN PLACE (±±±±±±±±±±)	±±±±±±±±±±			

U.S. ARMY MOBILITY EQUIPMENT RESEARCH AND DEVELOPMENT COMMAND FORT BELVOIR, VIRGINIA 22060		
LCM-8, MOD-1, CONTROL CONSOLE MODIFICATIONS		
SIZE	FIG NO	ORG NO
A1	97403	13226E9463
SCALE	SHEET 6	

55