

8

7

6

5

4

3

2

1

| REFERENCE DRAWINGS APPLICABLE TO HULL NUMBERS 8540 THRU 8560 AND 8580 THRU 8618 | | |
|--|-------------|--|
| NO. | DRAWING NO. | TITLE |
| 1 | 13226E9454 | LCM-8,MOD-1,BATTERY BOX INSTALLATION |
| 2 | 13226E9455 | LCM-8,MOD-1,MODIFICATION HYD START SYSTEM |
| 3 | 13226E9458 | LCM-8,MOD-1,MODIFICATION FOR INSTALLATION OF NAVIGATION LIGHTS |
| 4 | 13226E9459 | LCM-8,MOD-1,STOWAGE LOCKER |
| 5 | 13226E9461 | LCM-8,MOD-1,MODIFICATION TO HYDRAULIC POWER STEERING SYSTEM |
| 6 | 13226E9463 | LCM-8,MOD-1,CONTROL CONSOLE MODIFICATIONS |
| 7 | 13226E9471 | LCM-8,MOD-1,SALINITY PIPING ARRANGEMENT |
| 8 | 13226E9467 | LCM-8,MOD-1,MODIFICATION TO HYD RESERVOIR RAMP/HYD START |
| 9 | 13226E9465 | LCM-8,MOD-1,BILGE PUMP HYD MOTOR PIPING SYSTEM |
| 10 | 13226E9466 | LCM-8,MOD-1,MODIFICATION TO RAMP HYD SYSTEM |
| 11 | 13226E9476 | LCM-8,MOD-1,POWER LIGHTING AND IC SYSTEM |

| REFERENCE DRAWINGS APPLICABLE TO HULL NUMBERS 8520 THRU 8539 | | |
|---|-------------|--|
| NO. | DRAWING NO. | TITLE |
| 1 | 13226E9454 | LCM-8,MOD-1,BATTERY BOX INSTALLATION |
| 2 | 13226E9455 | LCM-8,MOD-1,MODIFICATION HYD START SYSTEM |
| 3 | 13226E9458 | LCM-8,MOD-1,MODIFICATION FOR INSTALLATION OF NAV LIGHTS |
| 4 | 13226E9459 | LCM-8,MOD-1,STOWAGE LOCKER |
| 5 | 13226E2251 | LCM-8,MOD-1,MODIFICATION TO HYDRAULIC POWER STRG SYSTEM |
| 6 | 13226E2254 | LCM-8,MOD-1,CONTROL CONSOLE MODIFICATIONS |
| 7 | 13226E9471 | LCM-8,MOD-1,SALINITY PIPING ARRANGEMENT |
| 8 | 13226E9467 | LCM-8,MOD-1,MODIFICATION TO HYD RESERVOIR RAMP/HYD START |
| 9 | 13226E9465 | LCM-8,MOD-1,BILGE PUMP HYD MOTOR PIPING SYSTEM |
| 10 | 13226E9466 | LCM-8,MOD-1,MODIFICATION TO RAMP HYD SYSTEM |
| 11 | 13226E9476 | LCM-8,MOD-1,POWER LIGHTING AND IC SYSTEM |

| SHEETS | | | | STATUS OF REVISIONS | | | | |
|--------|---|---|---|---------------------|-----|-----------------------------------|-----------|----------|
| 5 | 4 | 3 | 2 | ZONE | LTR | DESCRIPTION | DATE | APPROVED |
| A | A | - | - | A | | SEE ECP NO. 90HE3009 AND 90HE3310 | 14 MAR 91 | RML |

LABEL PLATE LIST

| ITEM | INSCRIPTION | TYPE | QTY | MATL | POSITION | FRAME | P/S | OFF CENTER LINE | REF NO. | VALVE | | | LOCATION | REMARKS |
|------|---|------|-----|-------|-------------------------|-------|-----|-----------------|---------|----------|--------|----------|-------------|---|
| | | | | | | | | | | FIND NO. | SIZE | TYPE | | |
| 1 | BATTERIES | 2B | 1 | AL | | 38 | S | 9'-0" | 1 | 7 | - | - | ENGINE ROOM | LOCATE ON BATTERY BOX COVER |
| 2 | HAND PUMP CUTOFF | 2B | 1 | AL | BTM SHELL | 35 | S | 18" | 2 | V-2 | 3/8" | GLOBE | ENGINE ROOM | CHAIN TO VALVE |
| 3 | HYD START ACCUMULATOR BLOWDOWN (2 LINES) | 2E | 1 | AL | TOP OF HYD TANK | 39 | P | 20" | 2 | V-3 | 1/2" | GLOBE | ENGINE ROOM | CHAIN TO VALVE |
| 4 | HYD START HAND PUMP | 20 | 1 | BRASS | BTM SHELL | 36 | S | 18" | 2 | - | - | - | ENGINE ROOM | LOCATE ON UNDERSIDE OF PUMP COVER |
| 5 | HYD START SYSTEM FILL USE MIL-H-5606 HYD OIL ONLY | 3C | 1 | AL | MAIN HYD TANK | 39 | P | - | 8 | - | - | - | ENGINE ROOM | LOCATE NEAR FILLER NECK |
| 6 | HYD START RELIEF 3400 PSI (2 LINES) | 2A | 1 | AL | TOP OF HYD TANK | 39 | P | 24" | 2 | V-6 | - | RELIEF | ENGINE ROOM | |
| 7 | STARTING INSTRUCTIONS (SEE DETAIL) | 6 | 1 | BRASS | CONSOLE | - | P | 24" | 2 | - | - | - | PILOT HOUSE | LOCATE NEAR STARTING BUTTONS(BELOW ITEM 18) |
| 8 | HYD START CONTROL VALVE (2 LINES) | 2A | 2 | AL | ENGINE FOUNDATION | 35 | P&S | 75"/35" | 2 | V-5 | 3/4" | SOLENOID | ENGINE ROOM | LOCATE BY SOLENOID VALVE |
| 9 | HYD START SYSTEM TANK (2 LINES) | 2A | 1 | AL | | - | P | 22" | 2 | - | - | - | ENGINE ROOM | POSITION CENTRALLY ON TANK FWD FACE |
| 10 | MASTHEAD LIGHT | 2B | 1 | BRASS | ABOVE RECEPTACLE | 39 | P | 12" | 3 | - | - | - | PILOT HOUSE | |
| 11 | STOWAGE LOCKER | 2B | 1 | BRASS | 36" ABOVE CARGO DECK | 22 | P | WING WALL | 4 | - | - | - | CARGO DECK | CENTER ON W.T. HATCH |
| 12 | HYD STEERING | 2B | 1 | BRASS | CONSOLE | - | S | 12" | 6 | - | - | - | PILOT HOUSE | |
| 13 | STEERING SYSTEM FILL USE MIL-H-17672 HYD OIL ONLY | 3A | 1 | AL | STEERING HYD TANK | 31 | P | 16" | 5 | - | - | - | ENGINE ROOM | LOCATE NEAR FILLER NECK |
| 14 | STEERING PUMP | 2B | 2 | AL | STEERING PUMP ON ENGINE | 36 | P&S | 55" | 5 | M-1 | - | - | ENGINE ROOM | |
| 15 | STEERING HYD TANK | 2C | 1 | AL | STEERING HYD TANK | 31 | P | 12" | 5 | - | - | - | ENGINE ROOM | |
| 16 | HYD RAMP | 2B | 1 | BRASS | CONSOLE | - | S | 12" | 6 | - | - | - | PILOT HOUSE | |
| 17 | HYD START | 2B | 1 | BRASS | CONSOLE | - | S | 12" | 6 | - | - | - | PILOT HOUSE | |
| 18 | EMERGENCY ENGINE SHUTDOWN | 5 | 1 | BRASS | CONSOLE | - | P | - | 6 | - | - | - | PILOT HOUSE | LOCATE BELOW AIR SHUTDOWN HEADS |
| 19 | ENGINE SHUTDOWN | 4 | 1 | BRASS | CONSOLE | - | S | - | 6 | - | - | - | PILOT HOUSE | LOCATE BELOW FUEL SHUTDOWN HEADS |
| 20 | BATTERY AMPS | 2B | 1 | BRASS | CONSOLE | - | S | 12" | 6 | - | - | - | PILOT HOUSE | |
| 21 | BILGE PRIME CUTOFF | 1 | 2 | AL | ABOVE ENGINE | 35 | P&S | 55" | 7 | V-2 | 1/2" | GLOBE | ENGINE ROOM | |
| 22 | ENGINE START (SEE DETAIL) | 7 | 2 | AL | | 39 | P&S | - | 6 | - | - | - | ENGINE ROOM | LOCATE ADJACENT TO START TOGGLE SWITCH |
| 23 | HYD START ISOLATOR VALVE (2 LINES) | 2A | 1 | AL | BTM SHELL | 36 | - | C.L | 2 | V-3 | 1/2" | GLOBE | ENGINE ROOM | |
| 24 | RAMP SYSTEM FILL USE MIL-H-17672 HYD OIL ONLY | 3B | 1 | AL | MAIN HYD TANK | 39 | S | - | 8 | - | - | - | ENGINE ROOM | LOCATE NEAR FILLER NECK |
| 25 | START STBD ENGINE (2 LINES) | 2A | 1 | AL | DISTRIBUTION PANEL | - | P | - | 6 | - | - | - | PILOT HOUSE | LOCATE BELOW STBD STARTER BUTTON |
| 26 | START PORT ENGINE (2 LINES) | 2A | 1 | AL | DISTRIBUTION PANEL | - | P | - | 6 | - | - | - | PILOT HOUSE | LOCATE BELOW PORT STARTER BUTTON |
| 27 | DISTRIBUTION PANEL (SEE DETAIL) | 11 | 1 | AL | DISTRIBUTION PANEL | - | P | - | 6 | - | - | - | PILOT HOUSE | REPLACE EXISTING PLATE BETWEEN ALARM LIGHTS |
| 28 | LOW OIL PRESS/HIGH WATER TEMP (SEE DETAIL) | 15 | 1 | BRASS | ALARM BOX | 35 | P | - | 11 | - | - | - | PILOT HOUSE | |
| 29 | ENGAGE HYD PUMP | 10 | 2 | AL | ON HYD PUMP PIO | - | P&S | 46"/66" | 10 | - | - | - | ENGINE ROOM | |
| 30 | PRESS FOR MANUAL OVERRIDE | 8 | 2 | AL | ON SOLENOID VALVE | 35 | P&S | 75"/35" | 2 | V-5 | 3/4" | SOLENOID | ENGINE ROOM | |
| 31 | (RAMP/BILGE) HYD DIVERTER VALVE (SEE DETAIL) | 12 | 1 | AL | ON HYD DIVERTER VALVE | 37 | P | 42" | 9 | V-2 | 1 1/2" | BALL | ENGINE ROOM | |

CONTINUED ON SHEET 4

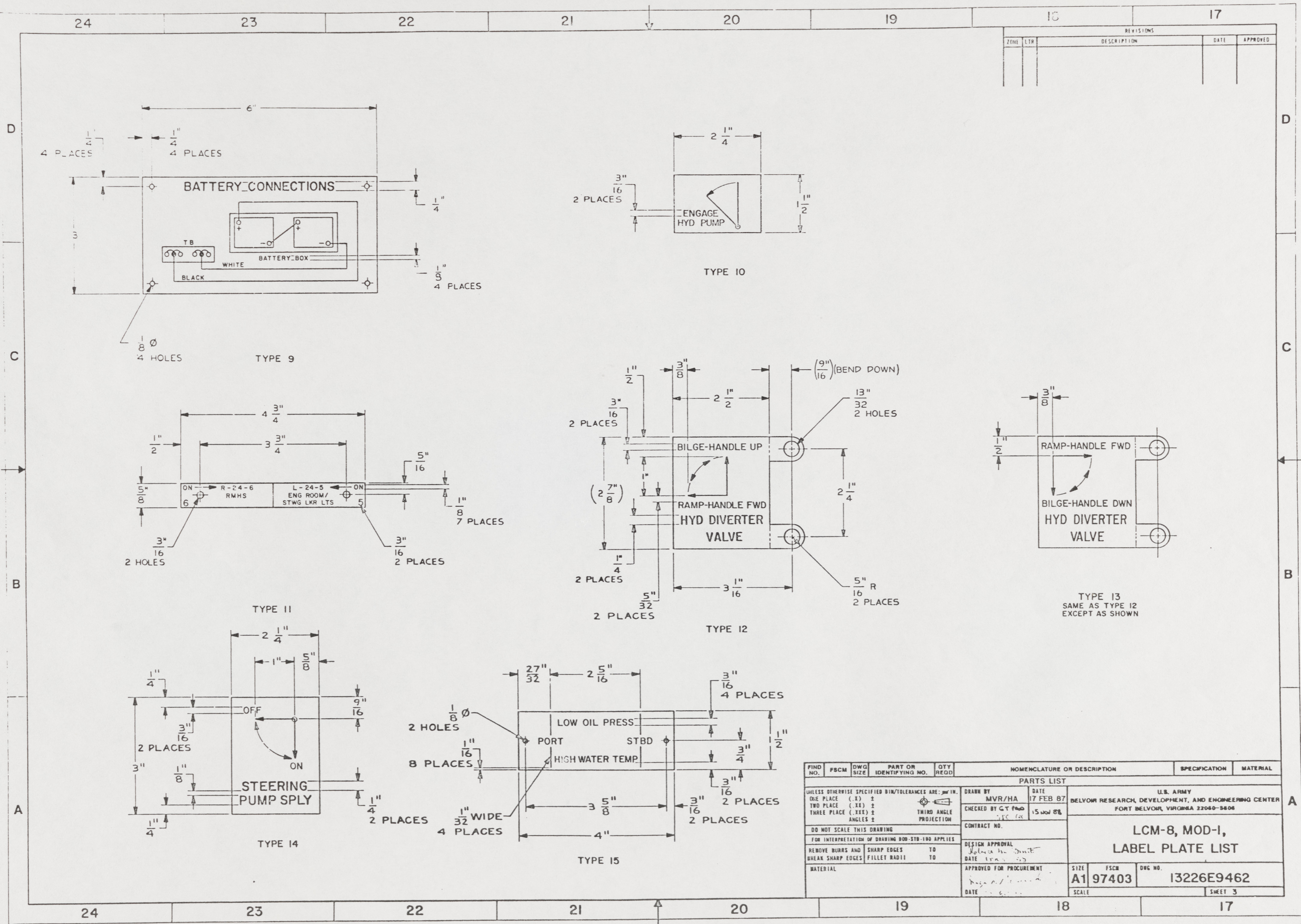
NOTES:

1. MOUNTING HOLE FOR TYPE I LABEL PLATES SHALL BE MADE TO SUIT DIAMETER OF APPLICABLE VALVE STEM.
2. ALL LABEL PLATES SHALL HAVE SMOOTH EDGES.
3. ALL LABEL PLATES ARE TO BE LOCATED SO THAT THE INSCRIPTION IS READILY DISCERNABLE AND NOT OBTSCURED BY PIPES OR OTHER OBJECTS.
4. ALL LABEL PLATE LETTERING IS TO BE BLACK WITH THE EXCEPTION OF TYPES 4, 5 AND 16. THESE TYPES SHALL BE LETTERED AS SHOWN.
5. ALL LABEL PLATES INDICATED IN THIS PLAN ARE ANOD AL METAL PHOTO PLATES, ENGRAVED BRASS PLATES OR FIND NO. 6 AND 7.
6. LABEL PLATES WITH HOLES TO BE ATTACHED WITH SCREWS, FIND NO. 3, OR CHAIN, FIND NO. 5. LABEL PLATES WITHOUT HOLES SHALL BE SECURED WITH FIND NO. 4. ALUMINUM PHOTO PLATES SHALL BE INSULATED TO PREVENT CONTACT WITH DISSIMILAR METALS.
7. CARE SHOULD BE TAKEN TO INSURE A WATERTIGHT SEAL AROUND THE EDGES OF ALL EXTERIOR LABEL PLATES.
8. MATERIALS ORDERED ON THIS DRAWING ARE NOT INTENDED TO BE RESTRICTIVE. SUBSTITUTION OF EQUAL QUALITY MATERIAL MAY BE MADE.
9. LABEL PLATES SHALL BE IN ACCORDANCE WITH MIL-M-11745 AND LABEL CHARACTERS SHALL COMPLY WITH MIL-STD-1472, PARA 5.5.5.
10. ALL COPY TO BE POSITIONED APPROXIMATELY AS SHOWN.

| SUPPLIER | FIND NO. | FSCM | DWG SIZE | PART OR IDENTIFYING NO. | QTY REQD | NOMENCLATURE OR DESCRIPTION | SPECIFICATION | MATERIAL |
|----------|----------|-------|----------|-------------------------|----------|---------------------------------------|---------------|-------------|
| YARD 7 | 7 | 1AA96 | | | 1 | DANGER SIGN, 7" X 10" (W.H. BRADY CO) | COML | PLASTIC |
| YARD 6 | 6 | 1AA96 | | C47063 | 1 | CAUTION SIGN 7" X 10" (W.H. BRADY CO) | COML | PLASTIC |
| YARD 5 | 5 | | | | AR | CHAIN (FOR FIND NO. 1) | COML | BRASS |
| YARD 4 | 4 | | | TYPE I,CL OPTL | AR | ADHESIVE,CYANOACRYLATE | | MIL-A-46050 |
| YARD 3 | 3 | | | | AR | SCREW,DRIVE,NO. 5 SIZE | COML | CRES |
| YARD 2 | 2 | | | | AR | LABEL PLATE,.050 THK | COML | BRASS |
| YARD 1 | 1 | | | | AR | LABEL PLATE,.030 THK | COML | ANOD AL |

THIS DRAWING APPLIES
TO HULL NUMBERS
8520 THROUGH 8560 AND
8580 THROUGH 8618 ONLY

| PARTS LIST | | U.S. ARMY BELVOIR RESEARCH, DEVELOPMENT, AND ENGINEERING CENTER FORT BELVOIR, VIRGINIA 22060-5606 | |
|---|--------------------------|---|--------------|
| UNLESS OTHERWISE SPECIFIED DIM/TOLERANCES ARE: $\frac{1}{16}$ IN. | DRAWN BY | AA/BO | DATE |
| ONE PLACE (.X) \pm - | CHECKED BY | G.T. PROD | 15 JAN 87 |
| TWO PLACE (.XX) \pm - | DATE | 15 NOV 88 | |
| THREE PLACE (.XXX) \pm - | CONTRACT NO. | | |
| ANGLES \pm - | DESIGN APPROVAL | <i>Joseph M. ...</i> | |
| DO NOT SCALE THIS DRAWING | APPROVED FOR PROCUREMENT | <i>Joseph M. ...</i> | |
| FOR INTERPRETATION OF DRAWING 000-STD-100 APPLIES | DATE | 15 NOV 88 | |
| REMOVE BURRS AND BREAK SHARP EDGES | SIZE | A1 | FSCM |
| SHARP EDGES TO - | DWG NO. | 97403 | 13226E9462 |
| FILLET RADIUS TO - | SCALE | 1/1 | SHEET 1 OF 5 |
| MATERIAL | | | |



| REVISIONS | | | | |
|-----------|-----|-------------|------|----------|
| ZONE | LTR | DESCRIPTION | DATE | APPROVED |
| | | | | |

| FIND NO. | FSCM | DWG SIZE | PART OR IDENTIFYING NO. | QTY RECD | NOMENCLATURE OR DESCRIPTION | SPECIFICATION | MATERIAL |
|--|------|---|-------------------------|--------------------------|-----------------------------|---|----------|
| PARTS LIST | | | | | | | |
| UNLESS OTHERWISE SPECIFIED DIM/TOLERANCES ARE: per IN. | | DRAWN BY | | DATE | | U.S. ARMY | |
| ONE PLACE (.X) ± | | MVR/HA | | 17 FEB 87 | | BELVOIR RESEARCH, DEVELOPMENT, AND ENGINEERING CENTER | |
| TWO PLACE (.XX) ± | | CHECKED BY | | 15 NOV 86 | | FORT BELVOIR, VIRGINIA 22060-5406 | |
| THREE PLACE (.XXX) ± | | THIRD ANGLE PROJECTION | | CONTRACT NO. | | LCM-8, MOD-1, LABEL PLATE LIST | |
| ANGLES ± | | FOR INTERPRETATION OF DRAWING 800-STD-100 APPLIES | | DESIGN APPROVAL | | SIZE | |
| DO NOT SCALE THIS DRAWING | | REMOVE BURRS AND BREAK SHARP EDGES | | DATE | | FSCM | |
| SHARP EDGES TO | | FILLET RADIUS TO | | APPROVED FOR PROCUREMENT | | DWG NO. | |
| MATERIAL | | DATE | | DATE | | SCALE | |
| | | | | | | A1 97403 | |
| | | | | | | 13226E9462 | |
| | | | | | | SHEET 3 | |

47

44

32 31 30 29 28 27 26 25

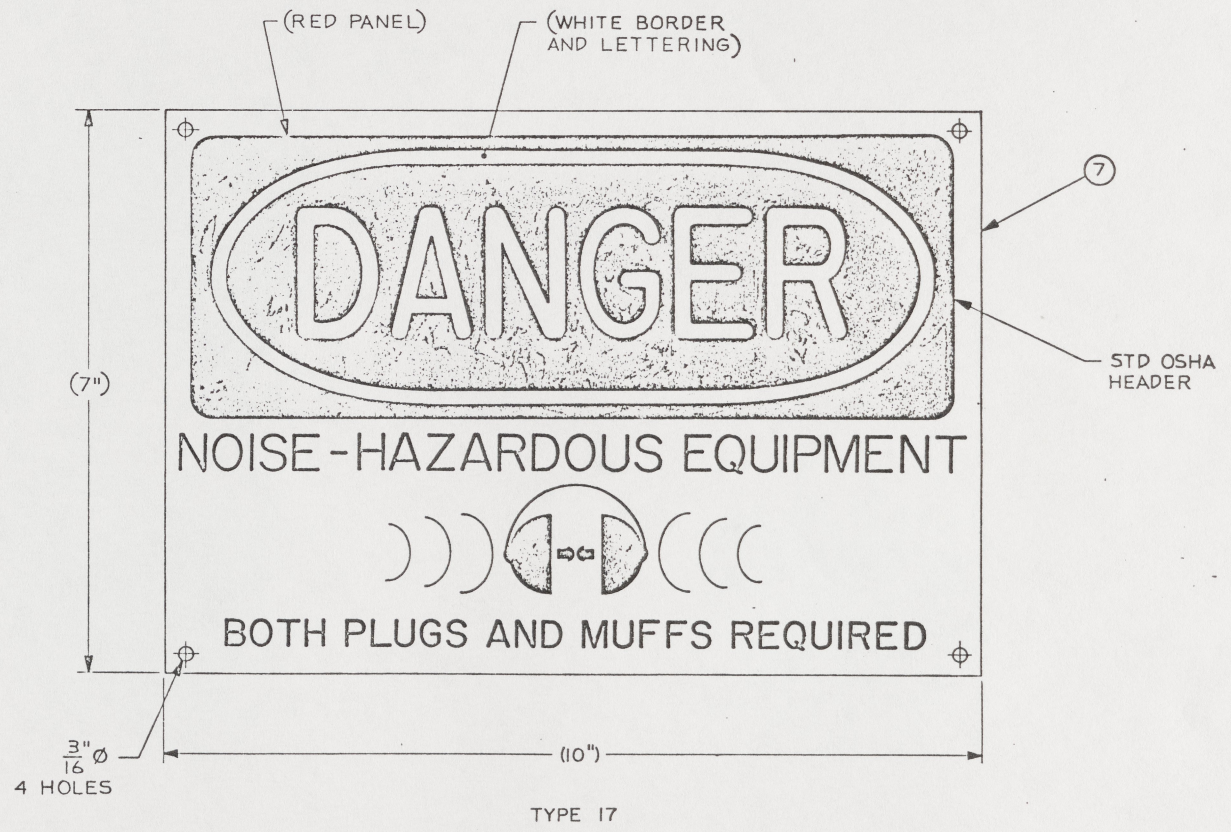
| REVISIONS | | | | |
|-----------|-----|-----------------------------------|-----------|----------|
| ZONE | LTR | DESCRIPTION | DATE | APPROVED |
| | A | SEE ECP NO. 90HE3309 AND 90HE3310 | 14 MAR 91 | CMJ |

LABEL PLATE LIST (CONTINUED)

| ITEM | INSCRIPTION | TYPE | QTY | MATL | POSITION | FRAME | P/S | OFF CENTER LINE | REF NO. | VALVE | | | LOCATION | REMARKS |
|------|--|------|-----|-------|--------------------------------|-------|-----|-----------------|---------|----------|--------|------|-------------|--|
| | | | | | | | | | | FIND NO. | SIZE | TYPE | | |
| 32 | (RAMP/BILGE) HYD DIVERTER VALVE (SEE DETAIL) | 13 | 1 | AL | ON HYD DIVERTER VALVE | 57 | S | 7/8" | 9 | V-2 | 1 1/2" | BALL | ENGINE ROOM | |
| 33 | STEERING PUMP SUPPLY ON/OFF | 14 | 2 | AL | BELOW HYD STEERING TK | 51 | P | 12" | 5 | V-1 | 3/4" | BALL | ENGINE ROOM | |
| 34 | ENGINE ALARMS | 2D | 1 | BRASS | ALARM BOX | 55 | P | - | 11 | | | | PILOT HOUSE | REPLACE EXISTING "ENGINE ALARMS" LABEL PLATE |
| 35 | HAZARD PLATE HEARING PROTECTION | | 1 | PLSTC | UNDERSIDE OF ENGINE ROOM HATCH | 35 | P | 14" | - | | | | ENGINE ROOM | |
| 36 | CAUTION PLATE HEARING PROTECTION | | 1 | PLSTC | PORT SIDE WALL OF PILOT HOUSE | - | P | 38" | - | | | | PILOT HOUSE | |
| 37 | BATTERY CONNECTIONS | 9 | 1 | AL | STBD SIDE SHELL | 38 | S | 10'-6" | 1 | | | | ENGINE ROOM | POSITION ABOVE BATTERY BOX |
| 38 | TO MANUALLY DISCHARGE SYSTEM | 18 | 1 | AL | STBD SIDE SHELL | 55 | S | 10'-6" | 12 | | | | ENGINE ROOM | POSITION BY PNEUMATIC CONTROL HEAD |
| 39 | FIRE ALARM BREAK GLASS | 19 | 1 | BR | PILOT HOUSE FRONT | 35 | CL | - | 12 | | | | PILOT HOUSE | ABOVE MANUAL PULL BOX |

D
C
B
A

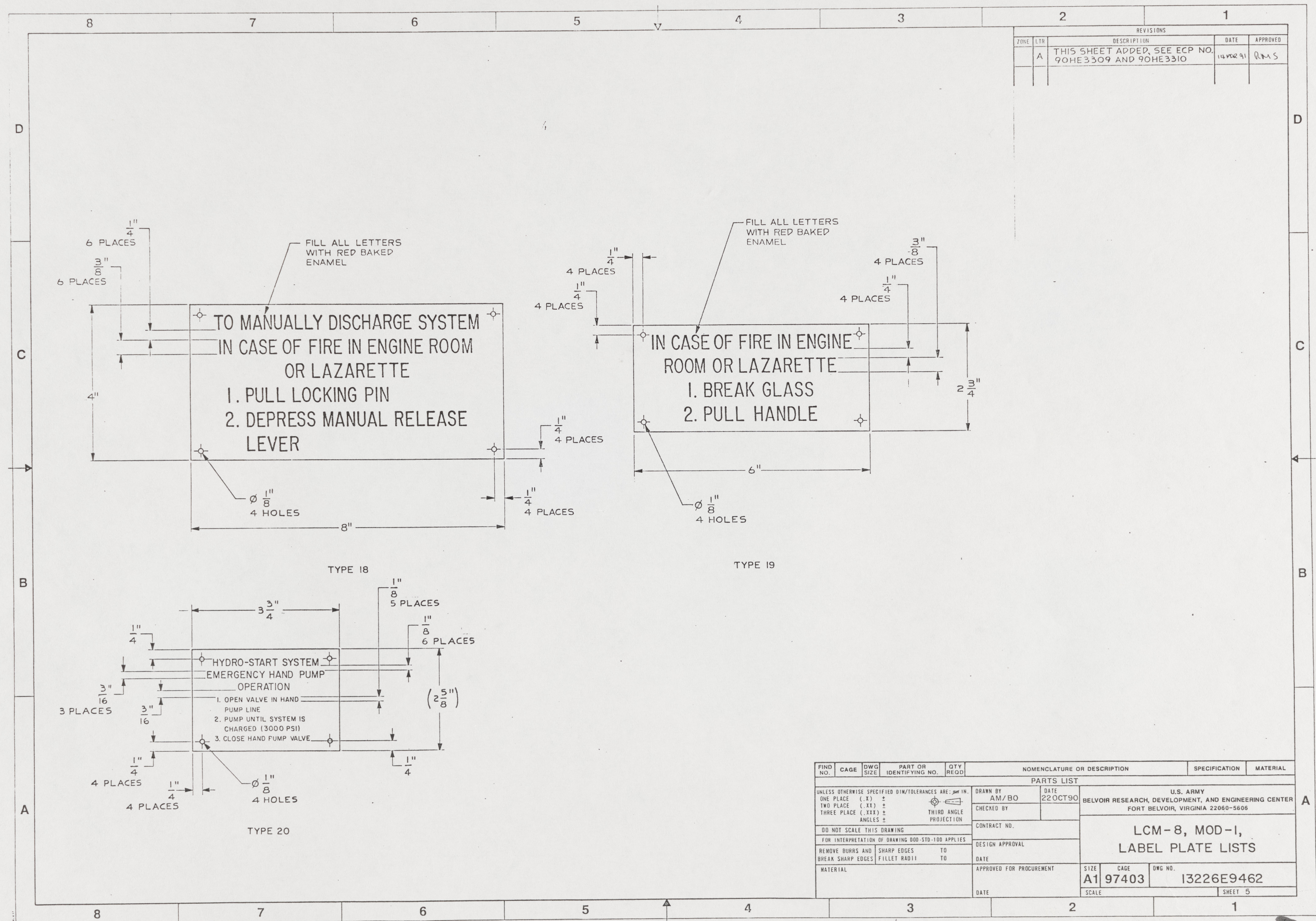
D
C
B
A



48

| FIND NO. | FSCM | DWG SIZE | PART OR IDENTIFYING NO. | QTY REQD | NOMENCLATURE OR DESCRIPTION | SPECIFICATION | MATERIAL |
|--|------|----------------|-------------------------|--|-----------------------------|---------------|----------|
| PARTS LIST | | | | | | | |
| UNLESS OTHERWISE SPECIFIED DIM/TOLERANCES ARE: per IN. | | | | DRAWN BY: RDF/JI DATE: 25NOV87 | | | |
| ONE PLACE (.X) ± | | | | CHECKED BY: G.T. Peab DATE: 15NOV 88 | | | |
| TWO PLACE (.XX) ± | | | | DESIGN APPROVAL: [Signature] DATE: 15NOV 88 | | | |
| THREE PLACE (.XXX) ± | | | | APPROVED FOR PROCUREMENT: [Signature] DATE: 15NOV 88 | | | |
| ANGLES ± | | | | MATERIAL: | | | |
| DO NOT SCALE THIS DRAWING | | | | CONTRACT NO.: | | | |
| FOR INTERPRETATION OF DRAWING GO TO STD-100 APPLIES | | | | DESIGN APPROVAL: [Signature] DATE: 15NOV 88 | | | |
| REMOVE BURRS AND BREAK SHARP EDGES | | | | SHARP EDGES TO FILLET RADIUS | | | |
| APPROVED FOR PROCUREMENT | | DATE: 15NOV 88 | | SIZE: A1 | | FSCM: 97403 | |
| | | | | DWG NO.: | | 13226E9462 | |
| | | | | SCALE: | | SHEET 4 | |

32 31 30 29 28 27 26 25



| ZONE | | REVISIONS | |
|------|---|-----------|----------|
| LTN | DESCRIPTION | DATE | APPROVED |
| A | THIS SHEET ADDED, SEE ECP NO. 90HE3309 AND 90HE3310 | 14 MAR 91 | RMS |

| FIND NO. | CAGE | DWG SIZE | PART OR IDENTIFYING NO. | QTY REQD | NOMENCLATURE OR DESCRIPTION | SPECIFICATION | MATERIAL |
|--|------|----------|-------------------------|----------|---------------------------------------|---------------|----------|
| PARTS LIST | | | | | | | |
| UNLESS OTHERWISE SPECIFIED DIM/TOLERANCES ARE: \pm IN. | | | | | DRAWN BY AM/BO DATE 22 OCT 90 | | |
| ONE PLACE (.X) \pm | | | | | CHECKED BY | | |
| TWO PLACE (.XX) \pm | | | | | CONTRACT NO. | | |
| THREE PLACE (.XXX) \pm | | | | | DESIGN APPROVAL | | |
| ANGLES \pm | | | | | DATE | | |
| THIRD ANGLE PROJECTION | | | | | APPROVED FOR PROCUREMENT | | |
| DO NOT SCALE THIS DRAWING | | | | | DATE | | |
| FOR INTERPRETATION OF DRAWING 800-STD-100 APPLIES | | | | | SIZE A1 CAGE 97403 DWG NO. 13226E9462 | | |
| REMOVE BURRS AND SHARP EDGES TO | | | | | SCALE | | |
| BREAK SHARP EDGES FILLET RADIUS TO | | | | | SHEET 5 | | |

49