

S

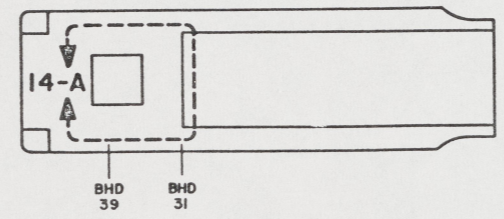
8 7 6 5 4 3 2 1

SHEETS				STATUS OF REVISIONS	
NO.	DATE	BY	REASON	NO.	DATE

- NOTES:
- THIS DRAWING HAS BEEN DEVELOPED FROM SHIPCHECK INFORMATION FOR ACCOMPLISHING THE INSTALLATION OF MODIFIED HYDRAULIC POWER STEERING SYSTEM TO LCM-8, MOD-1.
  - ALL FABRICATION WELDING AND INSPECTION TO BE IN ACCORDANCE WITH NAVSEA 0900-LP-014-5010, WELD SIZES BASED ON USE OF AWS A5.1, CLASS E7018 ELECTRODES FOR LC STEEL TO LC STEEL.
  - EQUIPMENT AND WORKMANSHIP SHALL BE IN ACCORDANCE WITH USCG AND ABS REGULATIONS.
  - REPAIR ALL PAINT DAMAGED BY THIS INSTALLATION AND PAINT ALL NEW STEEL IN ACCORDANCE WITH U.S. ARMY TECHNICAL BULLETIN TB43-0144.
  - MATERIAL ORDERED ON THIS DRAWING IS NOT INTENDED TO BE RESTRICTIVE. SUBSTITUTION OF EQUAL QUALITY MATERIAL MAY BE MADE EXCEPT ITEMS MARKED GFE.
  - SLIGHT DEVIATIONS FROM DIMENSIONS SHOWN ARE PERMISSIBLE TO SUIT ACTUAL CONDITIONS FOUND ABOARD THE VESSEL.
  - COMPONENTS SHOWN BY SOLID, HEAVY LINES ARE NEW AND ARE TO BE INSTALLED IN ACCORDANCE WITH THIS DRAWING. PHANTOM LINES INDICATE EXISTING COMPONENTS INSTALLED BY DRAWINGS REFERENCED AS NOTED.
  - DIMENSIONAL LOCATION OF NEW STEERING SYSTEM RESERVOIR IS NOMINAL. PIPING AND COMPONENTS SHOWN ON SHEET M TO BE REMOVED SHALL BE DIMENSIONALLY DETERMINED BY EXISTING SHIPBOARD CONDITIONS AND NEW LOCATION OF RESERVOIR.
  - THREADED MOUNTING HOLES IN PUMP FLANGE, FIND NO. M-1, SHALL BE DRILLED THRU WITH 13/32" DIA DRILL TO PROVIDE CLEARANCE FOR MOUNTING HARDWARE SUPPLIED WITH SHIP'S ENGINES.
  - 
  - ALL THREADED JOINTS SHALL BE ASSEMBLED USING ANTISEIZE TAPE, FIND NO. M-8. ALL JOINTS SHALL BE TESTED FOR TIGHTNESS IN ACCORDANCE WITH LCM-B INSTALLATION INSTRUCTIONS 85-1905-217-1.
  - IDENTIFY PIPING SYSTEM IN ACCORDANCE WITH TB43-0144.
  - RESERVOIR CAPACITY: 11.8 GAL.
  - PIPING SHALL BE SUITABLY SECURED BY PIPE HANGERS TO PREVENT VIBRATION AND PROTECT AGAINST DAMAGE IN ACCORDANCE WITH NAVSHIPS 804-1385781.
  - INTERNAL SURFACES OF RESERVOIR SHALL BE TREATED IN ACCORDANCE WITH MIL-P-23236, TYPE I, CLASS 3.
  - SECURE HOSES M-2 THRU M-5 USING CLAMPS M-11 OR M-12, AND SCREWS M-13, AS REQUIRED. PLACE WEAR RESISTANT MATERIAL IN AREAS WHERE ABRASION IS ANTICIPATED.
  - PIPES OR HOSES OBSCURED BY FLOOR PLATING OR ENGINE ROOM EQUIPMENT SHALL BE IDENTIFIED BY (COPPER, BRASS CRES) TAGS IN ACCORDANCE WITH MIL-STD-130. TERMINATIONS AND USE SHALL BE CLEAR.

REFERENCE DRAWINGS		
NO.	DRAWING NO.	TITLE
1	13226E9467	LCM-8, MOD-1, MODIF TO HYD RES. RAMP/HYD START
2	13226E9464	LCM-8, MOD-1, MISC STRUCTURAL DETAILS
3	516-4510540	LCM-8, MOD-1, STEERING - HYDRAULIC PIPING

YARD	FIND NO.	QTY	DESCRIPTION	UNIT	COMPL.	MATERIAL
YARD M-13	H524025-43	20	SCREW, TAPPING, PAN HD, CR REC, CS, NO. 10 X .50 L			STEEL
YARD M-12	H521333-78	10	CLAMP, LOOP-STEEL, CUSHIONED, 1.125 SIZE			
YARD M-11	H521333-76	10	CLAMP, LOOP-STEEL, CUSHIONED, .875 SIZE			
YARD M-10	85105		101-017-303	W		STEEL
GFE M-9	02249		FSP 107-1EDIA	1		VARIOUS
YARD M-8			SIZE II	AR		MIL-T-27730
GFE M-7	97403		13226E9477	1		STEEL
YARD M-6			H551922-33	W		STEEL
YARD M-5	24161		12C1T-12RFJX-168	1		VARIOUS
YARD M-4	24161		12C1T-12RFJX-192	1		VARIOUS
YARD M-3	24161		DC1T-BRFJX-168	1		VARIOUS
YARD M-2	24161		8C1T-BRFJX-192	1		VARIOUS
GFE M-1	82983		YTH42-40-18-16-HE-R1-14	2		VARIOUS
YARD V-1	57661		73-104 (APOLLO)	3		STEEL
YARD F-14	30780		8-FTI-S	2		STEEL
YARD F-13	00624		208209T-8-BS	2		STEEL
YARD F-12	30780		3/4-GG-S	1		STEEL
YARD F-11	30780		1/2-CD-S	1		STEEL
YARD F-10	30780		1/8-DD-S	1		STEEL
YARD F-9	30780		1/2-CT-S	2		STEEL
YARD F-8	30780		1/2-GG-S	1		STEEL
YARD F-7	30780		1/2-DD-S	6		STEEL
YARD F-6	30780		3/4 X 1/2 PTR-S	2		STEEL
YARD F-5	30780		1/2 M40-S	2		STEEL
YARD F-4	80090		F16. 2126	3		STEEL
YARD F-3	30780		1/2-FTX-S	2		STEEL
YARD F-2	30780		3/4-DD 48-S	4		STEEL
YARD F-1	30780		3/4 DD-S	1		STEEL
YARD P-5	30780		1/8 FF-S	1		STEEL
YARD P-4	30780		5/4 FF-S	4		STEEL
YARD P-3	30780		1/2 FF-S	2		STEEL
YARD P-2			TYPE S, GR A	AR		STEEL
YARD P-1			TYPE S, GR A	AR		STEEL



KEY VIEW 5-A

THIS DRAWING APPLIES TO HULL NUMBERS 8540 THROUGH 8560 AND 8580 THROUGH 8618 ONLY

UNLESS OTHERWISE SPECIFIED DIM/TOLERANCES ARE: $\frac{1}{16}$ IN. ONE PLACE (1.1) ± TWO PLACE (1.11) ± THREE PLACE (1.111) ± ANGLES ± DO NOT SCALE THIS DRAWING FOR INTERPRETATION OF DRAWING GOO 579-100 APPLIES REMOVE DRAGS AND BREAK SHARP EDGES SHARP EDGES TO FILLET RADIUS TO MATERIAL:	DRAWN BY: SLE CHECKED BY: GY PWD DATE: 7 JAN 88 CONTRACT NO: 15 NOV 88 DESIGN APPROVAL: <i>Colver M. Dwyer</i> DATE: 15 NOV 88 APPROVED FOR PROCUREMENT: <i>James H. [Signature]</i> DATE: 15 NOV 88	U.S. ARMY MOBILITY EQUIPMENT RESEARCH AND DEVELOPMENT COMMAND FORT BELVOIR, VIRGINIA 22060 <b>LCM-8, MOD-1          MODIFICATION TO HYDRAULIC          POWER STEERING SYSTEM</b> SHEET 1 OF 4 SPECIFICATION: 13226E9461 SCALE: NONE
--	---	---

8 7 6 5 4 3 2 1

22"  
17"  
11"  
58"  
85"  
11"  
17"  
22"

22"  
11"  
11"  
58"  
15"  
11"  
17"  
22"

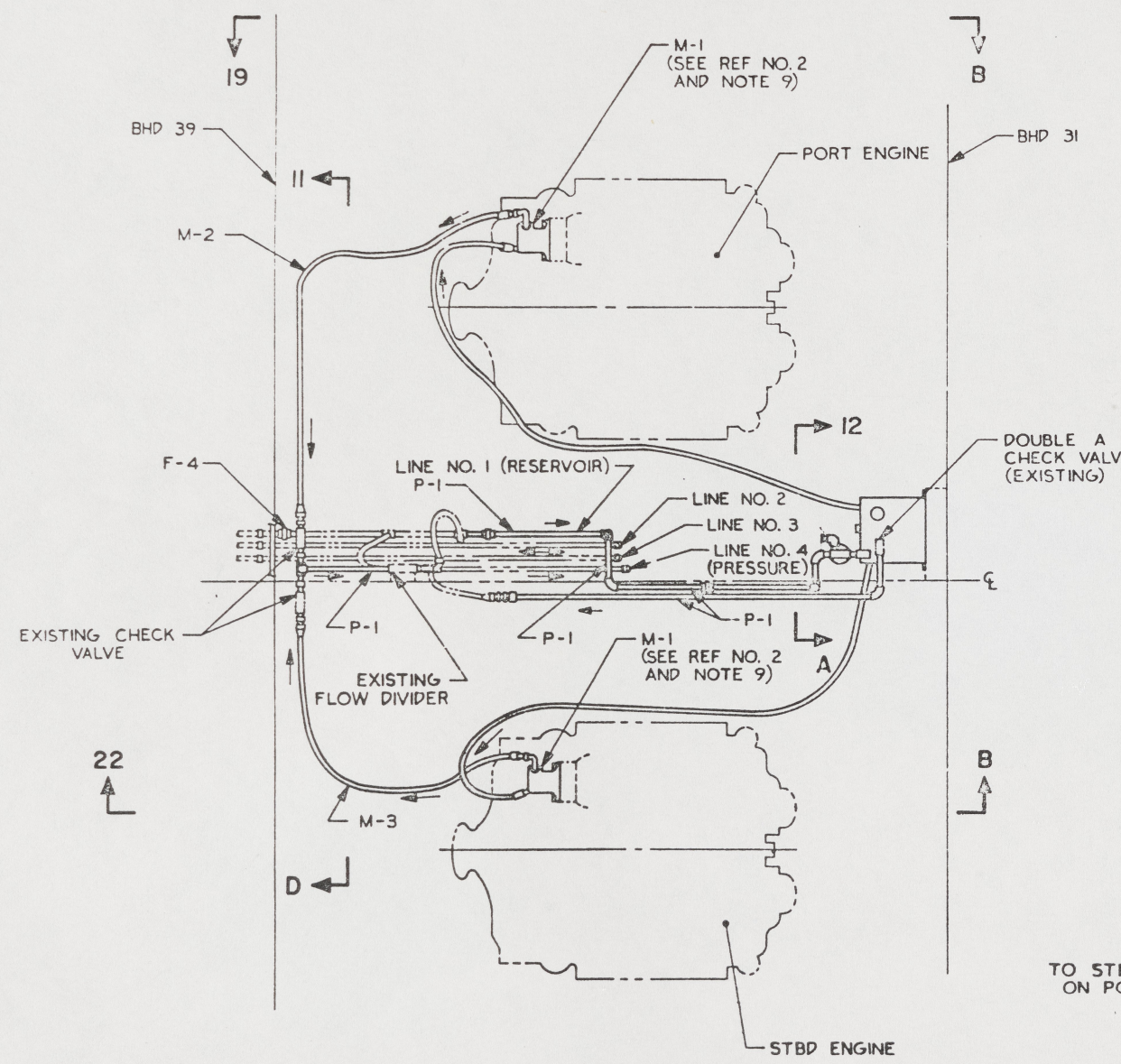
47

REVISIONS				
ZONE	LTR	DESCRIPTION	DATE	APPROVED

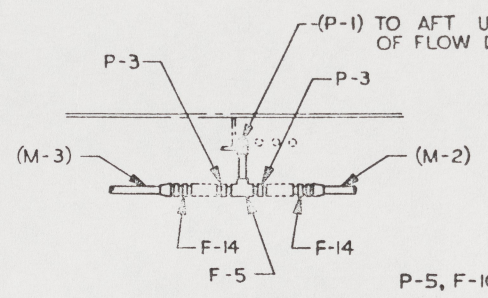
16 15 14 13 12 11 10 9

D  
C  
B  
A

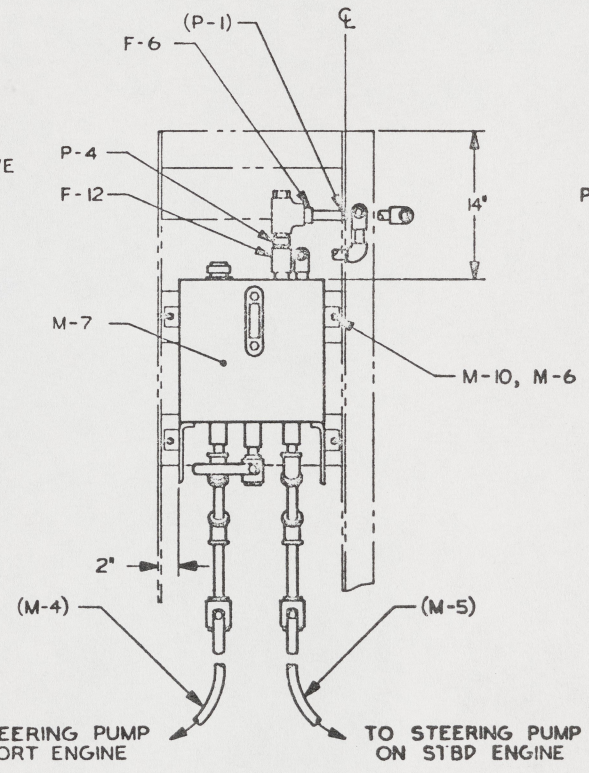
D  
C  
B  
A



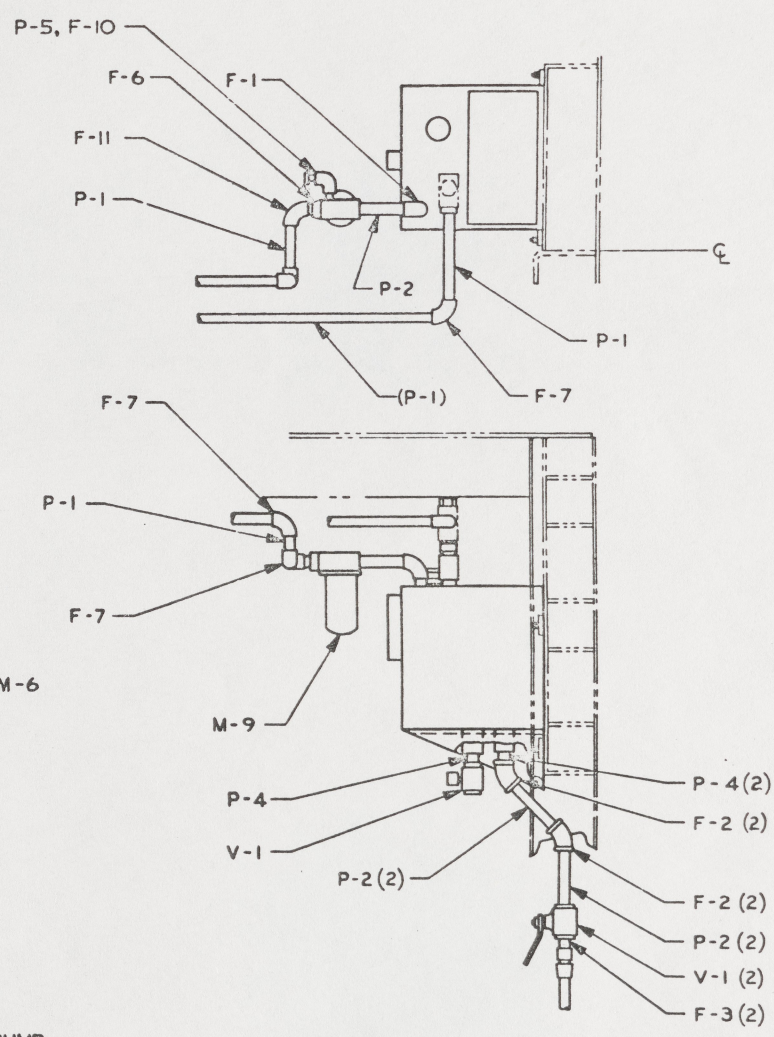
VIEW 14-A  
(6-B)  
FWD →



VIEW 11-D  
ROTATED 90° CW



VIEW 12-A  
SCALE 1 1/2" = 1'-0"  
ROTATED 90° CCW



FIND NO.	FSCM	QTY	PART OR IDENTIFYING NO.	QTY REQD	NOMENCLATURE OR DESCRIPTION	SPECIFICATION	MATERIAL
PARTS LIST							
UNLESS OTHERWISE SPECIFIED DIM/TOLERANCES ARE: mm 1/16"				DRAWN BY		DATE	
ONE PLACE (.X) 2				JC/AMF		8 JAN 67	
TWO PLACE (.XX) 2				CHECKED BY G.T. P.		15 NOV 68	
THREE PLACE (.XXX) 2				DATE		10 NOV 67	
ANGLES 2				CONTRACT NO.			
DO NOT SCALE THIS DRAWING							
FOR INTERPRETATION OF SHADING 800-STD-100 APPLIES							
REMOVE DIMS AND BREAK SHARP EDGES				SHARP EDGES TO		DESIGN APPROVAL	
FILLET RADIUS				TO		DATE	
MATERIAL				APPROVED FOR PROCUREMENT		DATE	
						SIZE	FSCM
						A1	97403
						DWG NO.	13226E9461
						SCALE	SHEET 2

16 15 14 13 12 11 10 9

42

24

23

22

21

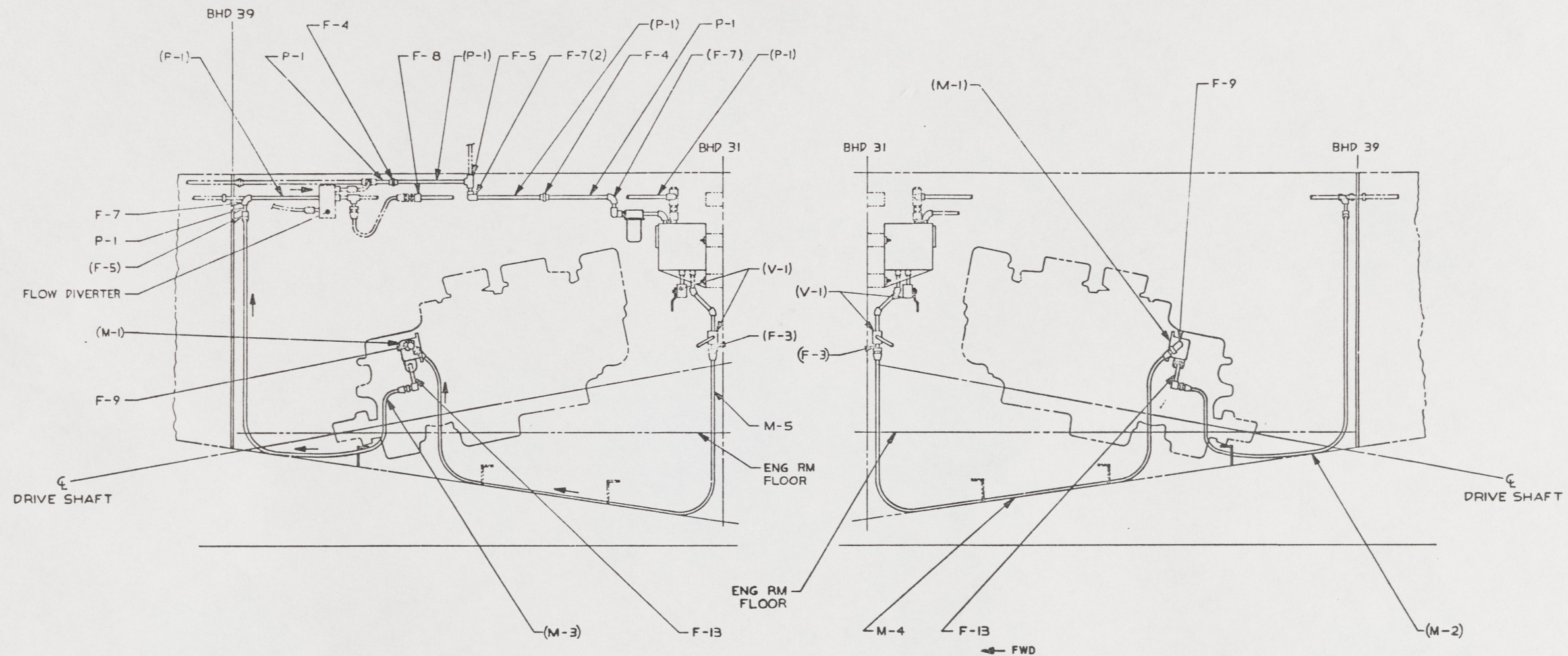
20

19

18

17

REVISIONS			DATE	APPROVED



**VIEW 22-B**  
(16-B)  
STBD LOOKING INBOARD  
FWD →

**VIEW 19-B**  
(16-D)  
PORT LOOKING INBOARD  
ROTATED 180°

43

UNLESS OTHERWISE SPECIFIED DIM/TOLERANCES ARE: IN.		DESIGNED BY SLE	DATE 7 JAN 85	U.S. ARMY MOBILITY EQUIPMENT RESEARCH AND DEVELOPMENT COMMAND FORT BELVOIR, VIRGINIA 22060	
ONE PLACE (.01) 2	TWO PLACE (.001) 2	THIRD PLACE (.0001) 2	FOURTH PLACE (.00001) 2	THIRD ANGLE PREDICTION	<b>LCM-8, MOD-1 MODIFICATION TO HYDRAULIC POWER STEERING SYSTEM</b>
DO NOT SCALE THIS DRAWING				CONTRACT NO.	
FOR INTERPRETATION OF DRAWING DOD-STD 100 APPLIES		DESIGN APPROVAL		SIZE	FIG NO
REMOVE BURRS AND DEBURR SHARP EDGES		DATE 15 MAR 85		A1	97403
SHARP CORNERS TO		APPROVED FOR PROCUREMENT		DWG NO	
FILLET RADIUS TO		DATE 15 MAR 85		13226E9461	
DIALECTICAL		DATE 15 MAR 85		SHEET 3	

24

23

22

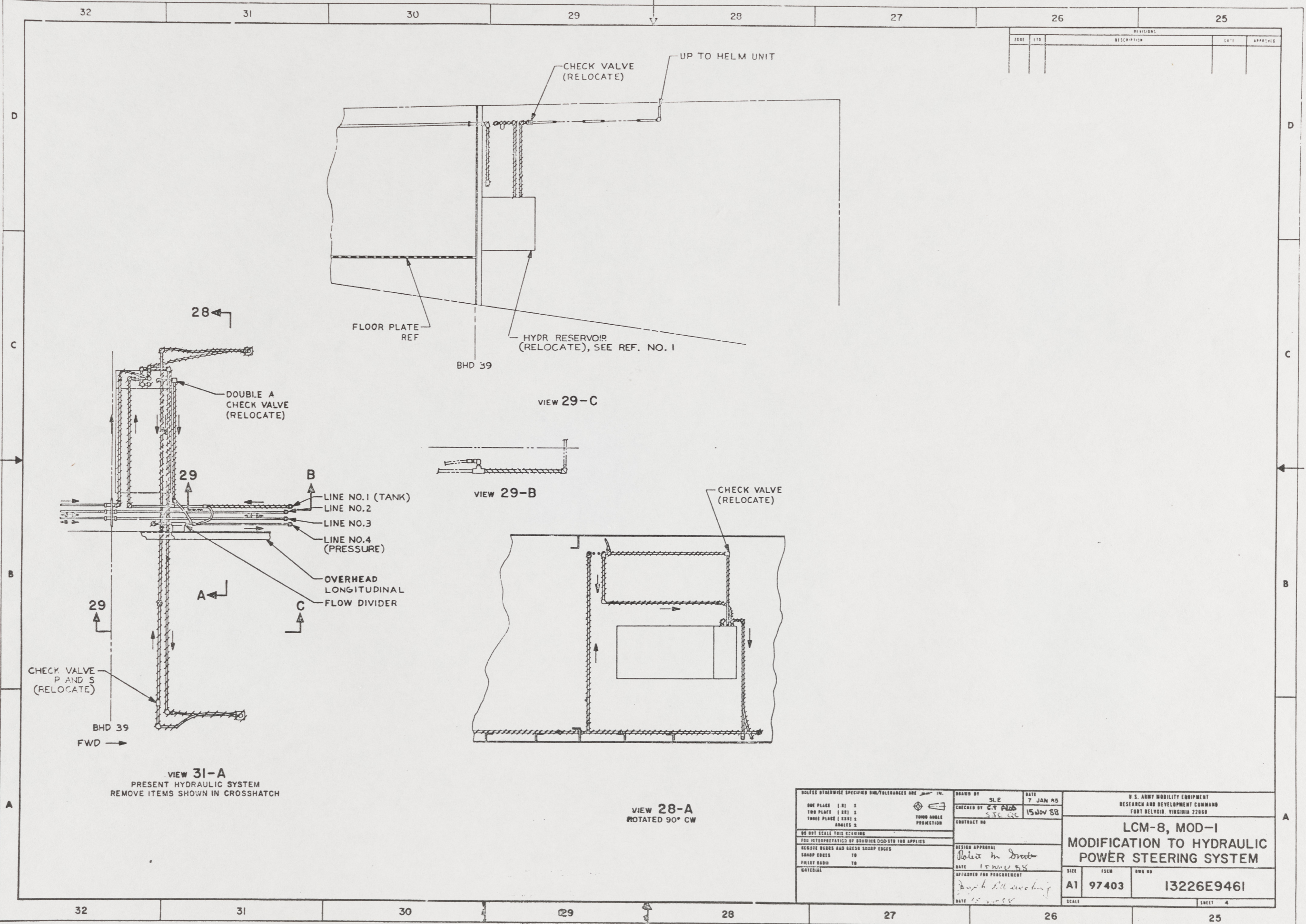
21

20

19

18

17



REVISIONS				
NO.	DATE	DESCRIPTION	BY	APP'D

44

UNLESS OTHERWISE SPECIFIED DIMENSIONS ARE IN INCHES HOLE PLACES (1.0) ± TUBE PLACES (1.0) ± TONGUE PLACES (1.0) ± DIMENSIONS ±		DRAWN BY SLE CHECKED BY C.F. Pugh DATE 15 NOV 58 EXTRACT NO.	U.S. ARMY MOBILITY EQUIPMENT RESEARCH AND DEVELOPMENT COMMAND FORT BELVOIR, VIRGINIA 22060
DO NOT SCALE THIS DRAWING FOR INTERPRETATION BY READERS ODD STD 100 APPLIES REMOVE EDGES AND BREAK SHARP EDGES SHARP EDGES TO FILED EDGES TO MATERIAL		DESIGN APPROVAL <i>John M. Dwyer</i> DATE 15 NOV 58 APPROVED FOR PROCUREMENT <i>Joseph H. ...</i> DATE 15 NOV 58	<b>LCM-8, MOD-1          MODIFICATION TO HYDRAULIC          POWER STEERING SYSTEM</b>
SIZE	FLCM	AWG NO.	SCALE
A1	97403	13226E9461	SHEET 4