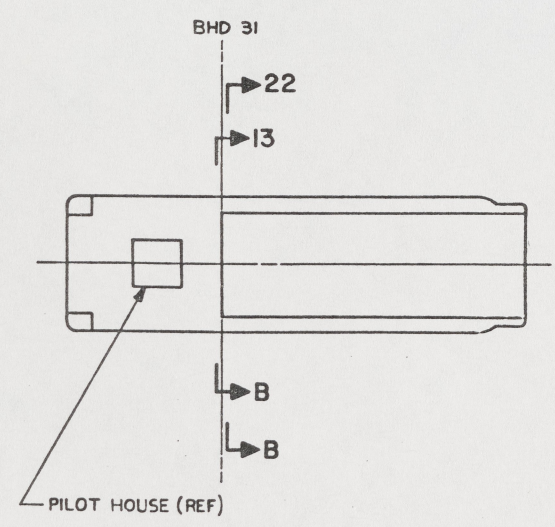


- NOTES:
1. WELDING AND BRAZING REQUIREMENTS SHALL BE IN ACCORDANCE WITH NAVSEA STD ITEM NO. 009-12.
 2. TEMPLATE ALL WORK FROM LCM-8 AND EQUIPMENT.
 3. EQUIPMENT AND WORKMANSHIP SHALL BE IN ACCORDANCE WITH USCG AND ABS REGULATIONS.
 4. REPAIR ALL PAINT DAMAGED BY THIS INSTALLATION AND PAINT ALL NEW STEEL IN ACCORDANCE WITH U.S. ARMY TECHNICAL BULLETIN TB43-0144.
 5. MATERIAL ORDERED ON THIS DRAWING IS NOT INTENDED TO BE RESTRICTIVE. SUBSTITUTION OF EQUAL QUALITY MATERIAL MAY BE MADE EXCEPT FOR ITEMS MARKED GFE.
 6. SLIGHT DEVIATIONS FROM DIMENSIONS SHOWN ARE PERMISSIBLE TO SUIT ACTUAL CONDITIONS FOUND ABOARD THE VESSEL.
 7. COMPONENTS SHOWN BY SOLID, HEAVY LINES ARE NEW AND ARE TO BE INSTALLED IN ACCORDANCE WITH THIS DRAWING. PHANTOM LINES INDICATE EXISTING COMPONENTS INSTALLED BY DRAWINGS REFERENCED AS NOTED.
 8. PROJECTING CORNERS AND EDGES TO BE WELL ROUNDED OR PADDED TO PROTECT PERSONNEL.
 9. PIPING SHALL BE SUITABLY SECURED BY PIPE HANGERS TO PREVENT VIBRATION AND PROTECT AGAINST DAMAGE IN ACCORDANCE WITH NAVSEA B04-1385781.
 10. PIPING SYSTEMS SHALL BE THOROUGHLY CLEANED BY FLUSHING WITH THE MEDIUM FOR WHICH THE SYSTEM IS INTENDED.
 11. ALL THREADED PIPE JOINTS SHALL BE ASSEMBLED USING ANTI-SEIZE TAPE, FIND NO. M-10, AND SHALL BE TESTED HYDROSTATICALLY WITH WATER AND ALL JOINTS INSPECTED FOR TIGHTNESS IN ACCORDANCE WITH LCM-8 INSTALLATION INSTRUCTIONS; 65-1905-217-1. TESTS SHALL BE CONDUCTED PRIOR TO PAINTING.
 12. IDENTIFY PIPING SYSTEM IN ACCORDANCE WITH TB43-0144.
 13. REMOVE EXISTING PIPING WHERE SHOWN CROSS HATCHED. PLUG BULKHEAD AND SHELL PENETRATIONS WATERTIGHT.
 14. RELOCATE EXISTING DECK DRAIN ON STBD SIDE TO DIMENSION SHOWN FROM WING WALL. PLUG PENETRATION WATERTIGHT AND GRIND FLUSH WITH DECK.
 15. PIPES OR HOSES OBSCURED BY FLOOR PLATING OR ENGINE ROOM EQUIPMENT SHALL BE IDENTIFIED BY (COPPER, BRASS, CRES) TAGS IN ACCORDANCE WITH MIL-STD-130. TERMINATIONS AND USE SHALL BE CLEAR.

REFERENCE DRAWINGS		
NO.	DRAWING NO.	TITLE
1	13226E9471	LCM-8, MOD-1, SALT WATER PIPING ARRANGEMENT
2	122-5103207	BULKHEADS AND TRANSOM DETAILS
3	13226E9465	LCM-8, MOD-1, PILCE PUMP HYD MTR PIPING SYSTEM
4	13226E9461	LCM-8, MOD-1, MOD TO HYD POWER STEERING SYSTEM



KEY VIEW 5-A
SCALE: NONE

THIS DRAWING APPLIES
TO HULL NUMBERS
8540 THROUGH 8560 AND
8580 THROUGH 8618 ONLY

SHEETS		STATUS OF REVISIONS	
NO.	DATE	DESCRIPTION	DATE
1			
2			
3			
4			

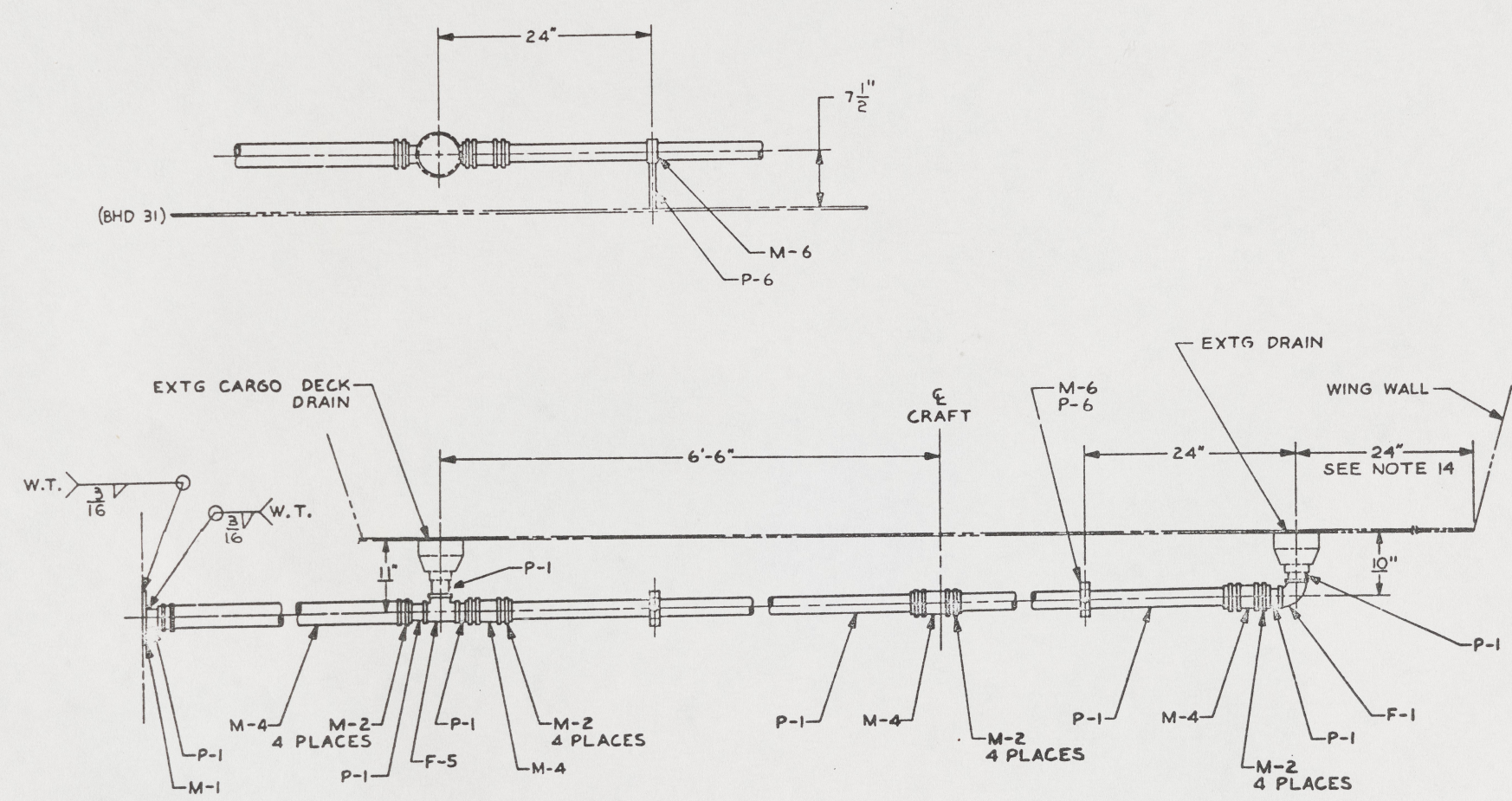
YARD	NO.	SIZE	AR	TAPE, ANTI-SEIZE (SEE NOTE 11)	MIL-T-27730	
YARD	M-16					
YARD	M-15	24161	76W	2 2 5/8" ID HOSE, WATER, N-PLY X 5" L (GATES)	COHL	RUBBER
YARD	M-14	24161	76W	2 2 5/8" ID HOSE, WATER, N-PLY X 5" L (GATES)	COHL	RUBBER
YARD	M-13			1 PLATE, 8" OD X 3 1/8" ID X 3/16" STK	ASTM A36	STEEL
YARD	M-12			2 ANGLE, 2" X 2" X 1/4" STK X 10" LB	ASTM A36	STEEL
YARD	M-11	24161	76W	2 2 1/2" ID HOSE, WATER, N PLY X 4" L (GATES)	COHL	RUBBER
YARD	M-10			AR SHEET, 1/16" X 1" X AR L	ASTM D2000	RUBBER
YARD	M-9			MS33049-2384 N NUT, HEX., .375-16 UNC-2B		CRES
YARD	M-8	80925	FIG. 120	1 U-BOLT, 3" PIPE (GRINNELL)	COHL	STEEL
YARD	M-7	80923	FIG. 120	1 U-BOLT, 2" PIPE (GRINNELL)	COHL	STEEL
YARD	M-6	80928	FIG. 130	2 CLAMP, 1 1/2" PIPE SIZE, PIPE THREADED (GRINNELL)	COHL	M. L. ZH PL
YARD	M-5			MS35642-14 10 CLAMP, HOSE, LOW PRESSURE, 2 0/16" X 3 1/2" RANGE		CRES
YARD	M-4	24161	35W	AR 1 5/8" ID HOSE, WATER, N PLY X 5" L (GATES)	COHL	RUBBER
YARD	M-3			MS35642-13 8 CLAMP, HOSE, LOW PRESSURE, 1 13/16"-2 3/4"		CRES
YARD	M-2			MS35642-12 10 CLAMP, HOSE, LOW PRESSURE, 1 1/16"-2" RANGE		CRES
YARD	M-1			1 PLATE, 8" OD X 1 5/8" ID X 3/16" STK	ASTM A36	STEEL
GFE	Y-4	12163	8-113-2	1 3" CHECK VALVE, 125 LB SWP, C X C (NIBCO)	COHL	BRONZE
YARD	V-3	93081	DCC04-6	2 3/8" DRAINCOCK (PH)	COHL	BRONZE
GFE	V-2	12169	8-121	2 1/2" GATE VALVE, 125 LB SWP, C X C (NIBCO)	COHL	BRONZE
GFE	V-1	12169	5-121	2 2" GATE VALVE, 125 LB SWP, C X C (NIBCO)	COHL	BRONZE
YARD	F-13	12168	733-3	2 UNION, C X F, 2" NOM SIZE (NIBCO)	COHL	BRONZE
YARD	F-12	72423	4171-445	2 BUSHING, INSIDE HEX, 2 1/2" X 3/8" IPS, THREADED (FLAGG)	COHL	BRONZE
YARD	F-11	72423	4171-000	2 BUSHING, HEX, 1/2" X 3/8" IPS (FLAGG)	COHL	CU ALY
YARD	F-10	12163	717	2 CAP, 2" NOM SIZE (NIBCO)	COHL	CU ALY
YARD	F-9			2 TEE, CL125, 2 1/2" IPS, THREADED	ANSI B16.15	CU ALY
YARD	F-8			2 ST ELBOW, 90°, CL125, 2" IPS, THREADED	ANSI B16.15	CU ALY
YARD	F-6	72423	3030-478	1 TEE, REDUCING, 3" X 2" X 2" (FLAGG)	COHL	BRONZE
YARD	F-5			1 TEE, C X C X C, 1 1/2" NOM SIZE	ANSI B16.22	CU ALY
YARD	F-4			2 ELBOW, 90°, C X C, 3" NOM SIZE	ANSI B16.22	CU ALY
YARD	F-3			2 ADAPTER, FTG X M, 2 1/2" NOM SIZE	ANSI B16.22	CU ALY
YARD	F-2			3 ELBOW, 90°, C X C, 2" NOM SIZE	ANSI B16.22	CU ALY
YARD	F-1			1 ELBOW, 90°, C X C, 1 1/2" NOM SIZE	ANSI B16.22	CU ALY
YARD	P-7			MS51846-182 2 NIPPLE, CLOSE TYPE, 2" NPS		CU ALY
YARD	P-6			TY 3, GR B 2 PIPE, BLACK, SCHED 40, 1/4" NPS X 7" L	ASTM A53	STEEL
YARD	P-5			UNS C12000-050 AR SEAMLESS COPPER WATER TUBE, 2 1/2" STD SIZE X .095" WALL	ASTM B88	CU ALY
YARD	P-4			UNS C12000-050 AR SEAMLESS COPPER WATER TUBE, 3" STD SIZE X .109" WALL	ASTM B88	CU ALY
YARD	P-3			MS31648-172 8 NIPPLE, CLOSE TYPE, 1 1/2" NPS		CU ALY
YARD	P-2			UNS C12000-050 AR SEAMLESS COPPER WATER TUBE, 2" STD SIZE X .093" WALL	ASTM B88	CU ALY
YARD	P-1			UNS C12000-050 AR SEAMLESS COPPER WATER TUBE, 1 1/2" STD SIZE X .072" WALL	ASTM B88	CU ALY

CHECKED BY: JER DATE: 7 AUG 84 CREATED BY: G.T. PUGH DATE: 25 NOV 83 CONTACT NO.	U.S. ARMY MOBILITY EQUIPMENT RESEARCH AND DEVELOPMENT COMMAND FORT BELVOIR, VIRGINIA 22060 LCM-8, MOD-1, MODIFICATION BILGE PIPING SYSTEM
DESIGNED APPROVAL: DATE: 15 MAY 84 APPROVED FOR PROCUREMENT: DATE: 15 MAY 84	PARTS LIST TITLE: 97403 SHEET NO.: 13226E9456 SCALE: 1"=1'-0" SHEET 1 OF 4

26

24 23 22 21 20 19 18 17

REV		DESCRIPTION	DATE	APPROVED



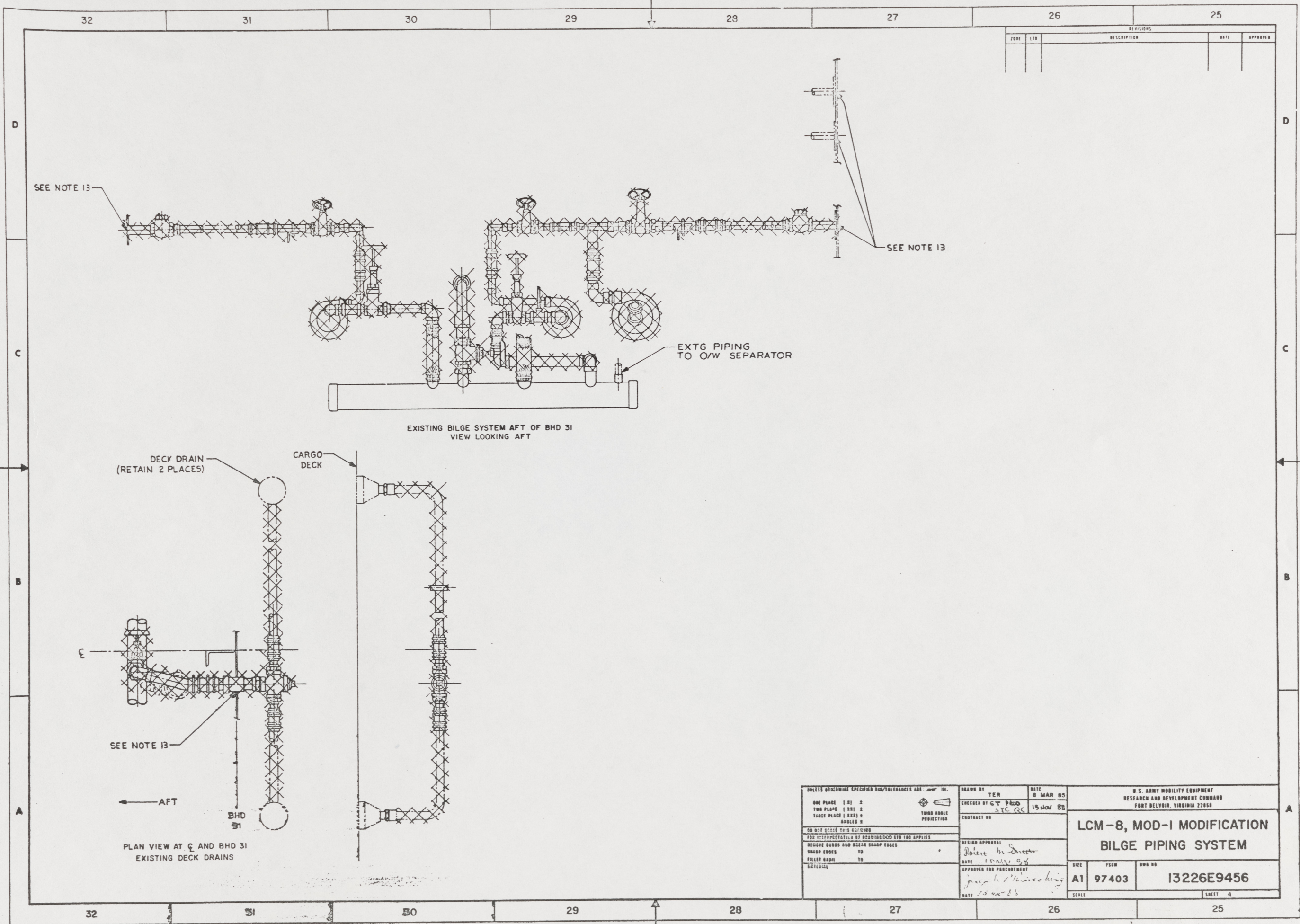
SECTION 22-B
(6-B)
ROTATED 90° CCW

28

<p>UNLESS OTHERWISE SPECIFIED DIM/TOLERANCES ARE: <i>per IN.</i></p> <p>ONE PLACE (.01) ± TWO PLACE (.001) ± THREE PLACE (.0005) ± FOUR PLACE (.0002) ±</p> <p>DO NOT SCALE THIS DRAWING</p> <p>FOR INTERPRETATION OF DRAWING DOD-STD-100 APPLIES</p> <p>REMOVE BURRS AND CHAMFER EDGES TO SHARP EDGES</p> <p>FILED BURN NO</p> <p>CLASSIFIED</p>	<p>DRAWN BY LAM</p> <p>CHECKED BY G.T. [Signature] SJC QC</p> <p>CONTRACT NO.</p> <p>DESIGN APPROVAL</p> <p>[Signature]</p> <p>DATE 15 NOV 88</p> <p>APPROVED FOR PROCUREMENT</p> <p>[Signature]</p> <p>DATE 15 NOV 88</p>	<p>DATE 21 AUG 84</p> <p>15 NOV 88</p> <p>U.S. ARMY MOBILITY EQUIPMENT RESEARCH AND DEVELOPMENT COMMAND FORT BELVOIR, VIRGINIA 22060</p> <p>LCM-8, MOD-1, MODIFICATION BILGE PIPING SYSTEM</p> <p>SIZE A1</p> <p>FECD 97403</p> <p>DWG NO. 13226E9456</p> <p>SCALE</p> <p>SHEET 5</p>
---	--	--

24 23 22 21 20 19 18 17

REVISIONS				
NO.	DATE	DESCRIPTION	BY	APPROVED



29

UNLESS OTHERWISE SPECIFIED DIM/TOLERANCES ARE: $\frac{1}{16}$ " IN. 400 PLACES (1.01) \pm 1000 PLACES (1.001) \pm 10000 PLACES (1.0001) \pm ANGLES \pm		DRAWN BY: TER CHECKED BY: C.T. PLOTT, S.T.C. RC CONTRACT NO.	DATE: 8 MAR 65 15 NOV 65	U.S. ARMY MOBILITY EQUIPMENT RESEARCH AND DEVELOPMENT COMMAND FORT BELVOIR, VIRGINIA 22060	
DO NOT SCALE THIS DRAWING FOR INTERPRETATION OF DIMENSIONS SEE THE APPLICABLE DRAWING NOTES AND USE THE SHARP EDGES SHARP CORNERS TO FILLET RADIUS TO MATERIAL		DESIGN APPROVAL <i>Robert H. Director</i> DATE: 15 MAR 65 APPROVED FOR PROCUREMENT <i>James H. McLaughlin</i> DATE: 15 MAR 65		SIZE: A1 PSCN: 97403 SCALE:	DDD NO: 13226E9456 SHEET: 4