

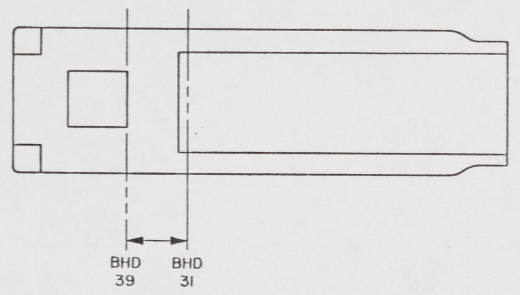
NOTES:

- ALL FABRICATION WELDING AND INSPECTION TO BE IN ACCORDANCE WITH NAVSEA 0500-LP-014-5010, WELD SIZES BASED ON USE OF AWS A5.1, CLASS E7018 ELECTRODES FOR LC STEEL TO LC STEEL.
- TEMPLATE ALL WORK FROM LCM-8 AND EQUIPMENT.
- EQUIPMENT AND WORKMANSHIP SHALL BE IN ACCORDANCE WITH USCG AND ABS REGULATIONS.
- REPAIR ALL PAINT DAMAGED BY THIS INSTALLATION AND PAINT ALL NEW STEEL IN ACCORDANCE WITH U.S. ARMY TECHNICAL BULLETIN TB43-0144.
- MATERIAL ORDERED ON THIS DRAWING IS NOT INTENDED TO BE RESTRICTIVE. SUBSTITUTION OF EQUAL QUALITY MATERIAL MAY BE MADE EXCEPT FOR ITEMS MARKED GFE.
- SLIGHT DEVIATIONS FROM DIMENSIONS SHOWN ARE PERMISSIBLE TO SUIT ACTUAL CONDITIONS FOUND ABOARD THE VESSEL.
- COMPONENTS SHOWN BY SOLID, HEAVY LINES ARE NEW AND ARE TO BE INSTALLED IN ACCORDANCE WITH THIS DRAWING. PHANTOM LINES INDICATE EXISTING COMPONENTS INSTALLED BY DRAWINGS REFERENCED AS NOTED.
- PROJECTING CORNERS AND EDGES TO BE WELL ROUNDED OR PADDED TO PROTECT PERSONNEL.
- SECURE HOSES, FIND NO. M-14 AND M-17 TO STIFFENERS ON BHD 39, USING CLAMPS, FIND NO. M-15 AND SCREWS, FIND NO. M-16.
- PIPING SYSTEMS SHALL BE THOROUGHLY CLEANED BY FLUSHING WITH THE MEDIUM FOR WHICH THE SYSTEM IS INTENDED.
- ALL THREADED PIPE JOINTS SHALL BE ASSEMBLED USING ANTISEIZE TAP, M-51. PIPING SHALL BE TESTED HYDROSTATICALLY AND ALL JOINTS INSPECTED FOR TIGHTNESS IN ACCORDANCE WITH LCM-8 INSTALLATION INSTRUCTIONS; 55-1905-217-1. TESTS SHALL BE CONDUCTED PRIOR TO PAINTING.
- IDENTIFY PIPING SYSTEM IN ACCORDANCE WITH TB43-0144.
- REWORK OIL CAP PORT IN EXISTING ACCUMULATORS TO 3/4" NPTF.
- SECURE HOSES (OTHER THAN REF IN NOTE 9) USING CLAMPS, FIND NO. M 40 OR M 50 AND SCREWS, M 16, AS REQUIRED. PLACE WEAR RESISTANT MATERIAL IN AREAS WHERE ABRASION IS ANTICIPATED.
- PIPES OR HOSES OBTAINED BY FLOOR PLATING OR ENGINE ROOM EQUIPMENT SHALL BE IDENTIFIED BY (COPPER, BRASS, CRES) TAGS IN ACCORDANCE WITH MIL-STD-130. TERMINATIONS AND USE SHALL BE CLEAR.

REFERENCE DRAWINGS APPLICABLE TO HULL NUMBERS 8520 THRU 8539		
NO.	DRAWING NO.	TITLE
1	13226E9452	LCM-8, MOD-1, CONTROL CONSOLE MODIFICATIONS
2	13226E9452	LCM-8, MOD-1, INSTL MCHRY FLOOR SPACE PLATES
3	13226E9467	LCM-8, MOD-1, MODS TO HYD RESERVOIR, RAMP/HYD START
4	13226E9448	LCM-8, MOD-1, ENGINE FOUNDATIONS
5	145-2534201	BOTTOM PLATING

REFERENCE DRAWINGS APPLICABLE TO HULL NUMBERS 8540 THRU 8560 AND 8580 THRU 8618		
NO.	DRAWING NO.	TITLE
1	13226E9463	LCM-8, MOD-1, CONTROL CONSOLE MODIFICATIONS
2	13226E9452	LCM-8, MOD-1, INSTL MCHRY FLOOR SPACE PLATES
3	13226E9467	LCM-8, MOD-1, MODS TO HYD RESERVOIR, RAMP/HYD START
4	13226E9448	LCM-8, MOD-1, ENGINE FOUNDATIONS
5	145-4681031	BOTTOM PLATING

SHEETS		STATUS OF REVISIONS	
5	4	DESCRIPTION	DATE
-	-	SEE ECP NO. 90HE3102 AND 90HE3103	20 MAR 88



KEY VIEW
PLAN 5-C

THIS DRAWING APPLIES
TO HULL NUMBERS
8520 THROUGH 8560 AND
8580 THROUGH 8618 ONLY

YARD	FIND NO.	FSCM	DWG SIZE	PART OR IDENTIFYING NO.	QTY	RECD	NOMENCLATURE OR DESCRIPTION	SPECIFICATION	MATERIAL
YARD M-51				SIZE II			TAPE, ANTISEIZE (SEE NOTE 11)	MIL-1-27730	
YARD M-50				MS21333-78	16		CLAMP, LOOP-STEEL, CUSHIONED, 1.125 SIZE		
YARD M-49				MS21333-76	48		CLAMP, LOOP-STEEL, CUSHIONED, .875 SIZE		
YARD M-49	85105			101-017-178	14		STUD, .375-16 UNC-2A X 1.00 L, W/FERRULE (NELSON)	COML	STEEL
YARD M-47				MS35307-358	16		SCREW, .375-16 UNC-2A X 3/4" L		CRES
YARD M-46					2		PLATE, 4" X 16" X 1/4" STK	ASTM A36	STEEL
YARD M-45	80996			FIG. 120	2		U-BOLT, 1/4" ROD SIZE X 2" PIPE SIZE (GRINNELL)	COML	STEEL
GFE M-44	01843			FRH300116	2		HIGH PRESSURE FILTER (UNITED TECHNOLOGIES)	COML	VARIOUS
GFE M-43	01843			CMD2A111	1		CRANKING MOTOR (C.W.) (UNITED TECHNOLOGIES)	COML	VARIOUS
YARD M-42				MS35307-369	4		SCREW, MACH, HEX HD, .375-16 UNC-2A X 2.75" L		CRES
YARD M-41				MS35338-141	4		WASHER, LOCK-SPRING, .375 NOM SIZE		CRES
YARD M-40				MS51922-18	20		NUT, HEX, .375-16 UNC-2B, SLFLKG		CRES
YARD M-39				MS51922-2	12		NUT, HEX, .250-20 UNC-2B, SLFLKG		CRES
YARD M-38	80996			FIG. 120	4		U-BOLT, 1/4" ROD SIZE X 1/2" PIPE SIZE (GRINNELL)	COML	STEEL
YARD M-37					2		F. B. 9" X 1" X 1/4" STK	ASTM A36	STEEL
YARD M-36					2		PLATE, 4" X 11" X 3/16" STK	ASTM A36	STEEL
YARD M-35					1		PLATE, 4 5/8" X 5 1/2" X 3/16" STK	ASTM A36	STEEL
YARD M-34					1		PLATE, 4 3/16" X 5 1/2" X 3/16" STK	ASTM A36	STEEL
YARD M-33					1		PLATE, 10" X 5 1/2" X 3/16" STK	ASTM A36	STEEL
YARD M-32					1		PLATE, 4 3/16" X 4 3/16" X 3/16" STK	ASTM A36	STEEL
YARD M-31					1		PLATE, 4 5/8" X 4 5/8" X 3/16" STK	ASTM A36	STEEL
YARD M-30				M18C510	4		SHEET, 1/8" X 1" X AR L	ASTM D2000	RUBBER
YARD M-29	08484			30044	4		HOSE CLAMP, 2 5/16"-3 1/4" RANGE (BREEZE)	COML	CRES
YARD M-28	85105			101-107-281	4		TUBULAR CLAMP (NELSON)	COML	STEEL
YARD M-27	85105			101-107-104	10		SINGLE CABLE HANGER (NELSON)	COML	STEEL
YARD M-26	24161			12CIT-12RFJX-196	1		HOSE ASSY, 3/4" JIC SWIVEL X 196" L (GATES)	COML	
YARD M-25	24161			12CIT-12RFJX-219	1		HOSE ASSY, 3/4" JIC SWIVEL X 219" L (GATES)	COML	
YARD M-24	24161			8C1T-BRFJX-136	1		HOSE ASSY, 1/2" JIC SWIVEL X 136" L (GATES)	COML	
YARD M-23	24161			8C1T-BRFJX-112	1		HOSE ASSY, 1/2" JIC SWIVEL X 112" L (GATES)	COML	
YARD M-22	24161			8C1T-BRFJX-98	1		HOSE ASSY, 1/2" JIC SWIVEL X 98" L (GATES)	COML	
YARD M-21	24161			8C1T-BRFJX-96	1		HOSE ASSY, 1/2" JIC SWIVEL X 96" L (GATES)	COML	
YARD M-20	24161			8C1T-BRFJX-80	1		HOSE ASSY, 1/2" JIC SWIVEL X 80" L (GATES)	COML	
YARD M-19	24161			8C1T-BRFJX-68	1		HOSE ASSY, 1/2" JIC SWIVEL X 68" L (GATES)	COML	
YARD M-18	24161			4C2AT-4RFJX-170	1		HOSE ASSY, 1/4" JIC SWIVEL X 170" L (GATES)	COML	
YARD M-17	24161			4C2AT-4RFJX-53	3		HOSE ASSY, 1/4" JIC SWIVEL X 53" L (GATES)	COML	
YARD M-16				MS24625-43	80		SCREW, TAPPING, PAN HD, CR, CRES, NO. 10 X .50 L		STEEL
YARD M-15				MS21333-73	16		CLAMP, LOOP-STEEL, CUSHIONED, .625" SIZE		
YARD M-14	24161			4C2AT-4RFJX-45	1		HOSE ASSY, 1/4" JIC SWIVEL X 45" L (GATES)	COML	
YARD M-13	24161			8C2AT-BRFJX-107	1		HOSE ASSY, 1/2" JIC SWIVEL X 107" L (GATES)	COML	
YARD M-12	24161			8C2AT-BRFJX-80	2		HOSE ASSY, 1/2" JIC SWIVEL X 80" L (GATES)	COML	
YARD M-11	24161			8C2AT-BRFJX-96	1		HOSE ASSY, 1/2" JIC SWIVEL X 96" L (GATES)	COML	
YARD M-10	24161			8C2AT-BRFJX-67	1		HOSE ASSY, 1/2" JIC SWIVEL X 67" L (GATES)	COML	
YARD M-9	24161			8C2AT-BRFJX-53	2		HOSE ASSY, 1/2" JIC SWIVEL X 53" L (GATES)	COML	
YARD M-8	24161			8C2AT-BRFJX-98	1		HOSE ASSY, 1/2" JIC SWIVEL X 98" L (GATES)	COML	

YARD M-7	24161	8C2AT-BRFJX-51	1	NOSE ASSY, 1/2 IN. JIC SWIVEL X 51" L (GATES)	COML	
YARD M-6	24161	8C2AT-BRFJX-28	4	NOSE ASSY, 1/2 IN. JIC SWIVEL X 28" L (GATES)	COML	
YARD M-5	24161	8C2AT-BRFJX-16	1	NOSE ASSY, 1/2 IN. JIC SWIVEL X 16" L (GATES)	COML	
YARD M-4	24161	8C2AT-BRFJX-102	1	NOSE ASSY, 1/2 IN. JIC SWIVEL X 102" L (GATES)	COML	
GFE M-3	01843	GG200656	2	GAUGE, 0 TO 5000 PSI (UNITED TECHNOLOGIES)	COML	
GFE M-2	01843	DR200740	4	ACCUMULATOR BRACKET (UNITED TECHNOLOGIES)	COML	
GFE M-1	01843	ACB-308-7110B	2	ACCUMULATOR (UNITED TECHNOLOGIES)	COML	

YARD F-37	98660	AC2000-12-B	1	ELBOW, 90°, MALE, 3/4" JIC X 1/2" IPS (FLODAR)	COML	STEEL
YARD F-36	98660	PF011-B	2	UNION, PIPE, 1/2" IPS (FLODAR)	COML	STEEL
YARD F-35	98660	PF3001-B	1	TEE, MALE, MALE, ELBOW, 1/2" IPS (FLODAR)	COML	STEEL
YARD F-34	98660	PF110-6-4	1	ADAPTER, 3/8" IPS FEM X 1/4" IPS MALE (FLODAR)	COML	STEEL
YARD F-33	98660	PF3110-12	2	TEE, FEMALE, FEMALE, MALE, 3/4" IPS (FLODAR)	COML	STEEL
YARD F-32	98660	PF3110-B	2	TEE, FEMALE, FEMALE, MALE, 1/2" IPS (FLODAR)	COML	STEEL
YARD F-31	98660	PF110-B-6	1	ADAPTER, 1/2" IPS FEMALE X 3/8" IPS MALE (FLODAR)	COML	STEEL
YARD F-30	98660	PF3011-B	2	TEE, FEMALE, MALE, FEMALE, 1/2" IPS (FLODAR)	COML	STEEL
YARD F-29	98660	PF3010-12	4	TEE, FEMALE, MALE, MALE, 3/4" IPS (FLODAR)	COML	STEEL
YARD F-28	98660	AC55-B-4	1	TUBE END REDUCER, 1/2" JIC X 1/4" JIC (FLODAR)	COML	STEEL
YARD F-27	98660	PF110-12-4	4	ADAPTER, 3/4" IPS FEMALE X 1/4" IPS MALE (FLODAR)	COML	STEEL
YARD F-26	98660	AC1000-B	2	CONNECTOR, MALE, 1/2" JIC X 3/8" IPS (FLODAR)	COML	STEEL
YARD F-25	98660	PF20-6	1	ELBOW, 90°, MALE, 3/8" IPS X 3/8" IPS (FLODAR)	COML	STEEL
YARD F-24	98660	AC1100-4-4	1	CONNECTOR, 1/4" JIC X 1/4" IPS FEMALE (FLODAR)	COML	STEEL
YARD F-23	98660	PF10-12-6	2	HEX NIPPLE, REDUCING, 3/4" IPS X 3/8" IPS (FLODAR)	COML	STEEL
YARD F-22	98660	PF31-B	2	TEE, FEMALE, 1/2" IPS (FLODAR)	COML	STEEL
YARD F-21	98660	AC3300-B-8-B	3	TEE, MALE, RUN, 1/2" JIC X 1/2" IPS X 1/2" JIC (FLODAR)	COML	STEEL
YARD F-20	98660	AC3200-B	3	TEE, MALE, 1/2" JIC X 1/2" JIC X 1/2" JIC (FLODAR)	COML	STEEL
YARD F-19	98660	AC3000-B	2	TEE, MALE, BRANCH, 1/2" JIC X 1/2" JIC X 3/8" IPS (FLODAR)	COML	STEEL
YARD F-18	98660	AC2000-12	1	ELBOW, 90°, MALE, 3/4" JIC X 3/4" IPS (FLODAR)	COML	STEEL
YARD F-17	98660	AC2000-8-4	3	ELBOW, 90°, MALE, 1/2" JIC X 1/4" IPS (FLODAR)	COML	STEEL
YARD F-16	98660	AC2000-8-12	2	ELBOW, 90°, MALE, 1/2" JIC X 3/4" IPS (FLODAR)	COML	STEEL
YARD F-15	98660	AC2000-4-4	1	ELBOW, 90°, MALE, 1/4" JIC X 1/4" IPS (FLODAR)	COML	STEEL
YARD F-14	98660	PF201-12-8	1	ELBOW, 90°, STREET, 3/4" IPS MALE X 1/2" IPS FEM (FLODAR)	COML	STEEL
YARD F-13	98660	AC1000-B-8	6	CONNECTOR, MALE, 1/2" JIC X 1/2" IPS (FLODAR)	COML	STEEL
YARD F-12	98660	AC1000-B-12	6	CONNECTOR, MALE, 1/2" JIC X 3/4" IPS (FLODAR)	COML	STEEL
YARD F-11	98660	AC1000-4-4	7	CONNECTOR, MALE, 1/4" JIC X 1/4" IPS (FLODAR)	COML	STEEL
YARD F-10			4	COUPLING, 1/4", THREADED, CL 3000	ANSI B16.11	FGD STL
YARD F-9	98660	PF101-16-B	1	REDUCER BUSHING, 1" X 1/2" IPS (FLODAR)	COML	STEEL
YARD F-8	98660	PF3010-B	1	TEE, MALE, FEMALE, MALE, 1/2" IPS (FLODAR)	COML	STEEL
YARD F-7			1	REDUCER, 3/4" X 1/2", THREADED, CL 300	ANSI B16.3	MI
YARD F-6	98660	PF11-12	2	COUPLING, PIPE, 3/4" IPS (FLODAR)	COML	STEEL
YARD F-5	98660	PF60-B	1	PLUG, SO HD, 1/2" IPS (FLODAR)	COML	STEEL
YARD F-4	98660	AC2000-B-8	3	ELBOW, 90°, MALE, 1/2" JIC X 1/2" IPS (FLODAR)	COML	STEEL
YARD F-3	98660	AC2000-B	2	ELBOW, 90°, MALE, 1/2" JIC X 3/8" IPS (FLODAR)	COML	STEEL
YARD F-2	98660	A18-B	1	TUBE, NUT, 1/2" JIC (FLODAR)	COML	STEEL
YARD F-1	98660	PF10-B	4	HEX NIPPLE, 1/2" IPS (FLODAR)	COML	STEEL

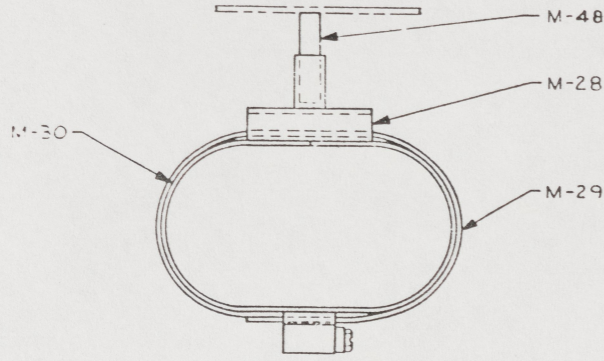
SPLR	FIND NO.	FSCM	DWG SIZE	PART OR IDENTIFYING NO.	QTY	RECD	NOMENCLATURE OR DESCRIPTION	SPECIFICATION	MATERIAL
YARD P-2				PIPE, 3/4", BLACK, SEAMLESS, SCHED 80				ASTM A53	STEEL
YARD P-1				PIPE, 1/2", BLACK, SEAMLESS, SCHED 40				ASTM A53	STEEL

UNLESS OTHERWISE SPECIFIED DIM/TOLERANCES ARE: .001 IN.		DRAWN BY	TRR	DATE	1 SEP 84
ONE PLACE (1.0)	±	CHECKED BY	G T P200	DATE	15 NOV 88
TWO PLACE (1.00)	±	CONTRACT NO.			
THREE PLACE (1.000)	±				
FILLET RADIUS	±				

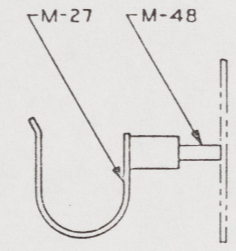
DO NOT SCALE THIS DRAWING		DESIGN APPROVAL	
FOR INTERPRETATION OF DRAWING DTD STD 100 APPLIES		SHARP EDGES TO	
REMOVE BURS AND BREAK SHARP EDGES		DATE	
APPROVED FOR PROCUREMENT		DATE	

U.S. ARMY MOBILITY EQUIPMENT RESEARCH AND DEVELOPMENT COMMAND FORT BELVOIR, VIRGINIA 22060	
LCM-8, MOD-1, MODIFICATION HYDRAULIC START SYSTEM	
SIZE	A1
FSCM	97403
DWG NO	13226E9455
SCALE NOTED	SHEET 1 OF 5

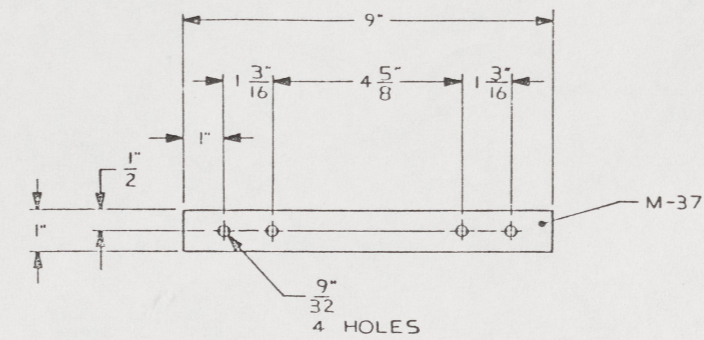
REVISIONS				
ZONE	NO	DESCRIPTION	DATE	APPROVED



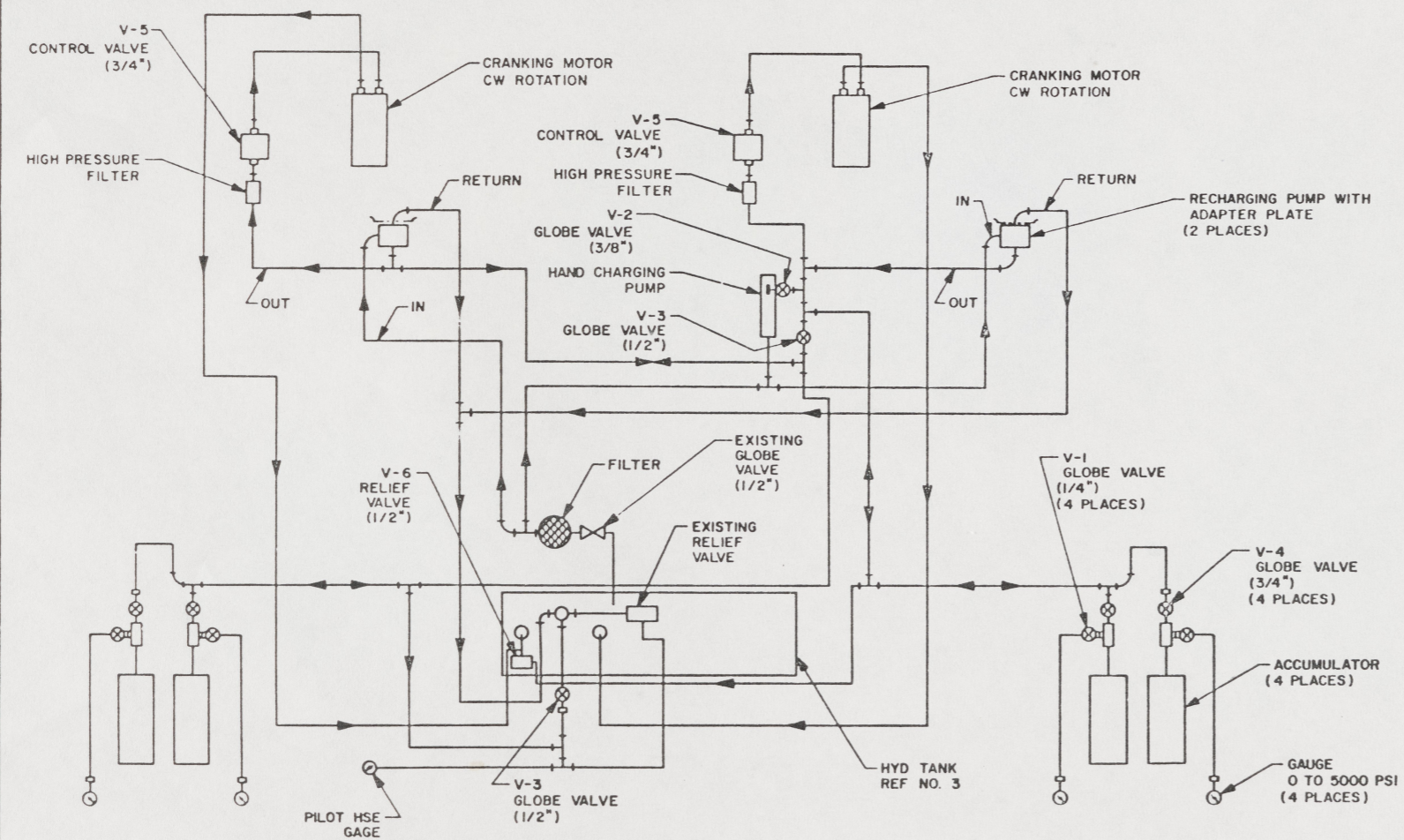
VIEW 15-C
TYP MULTIPLE HYDR HOSE SUPPORT
SCALE 1/1



VIEW 13-D
TYP SINGLE HYDR HOSE SUPPORT
SCALE 1/1



DETAIL 12-C
(29-D)
SCALE 1/2

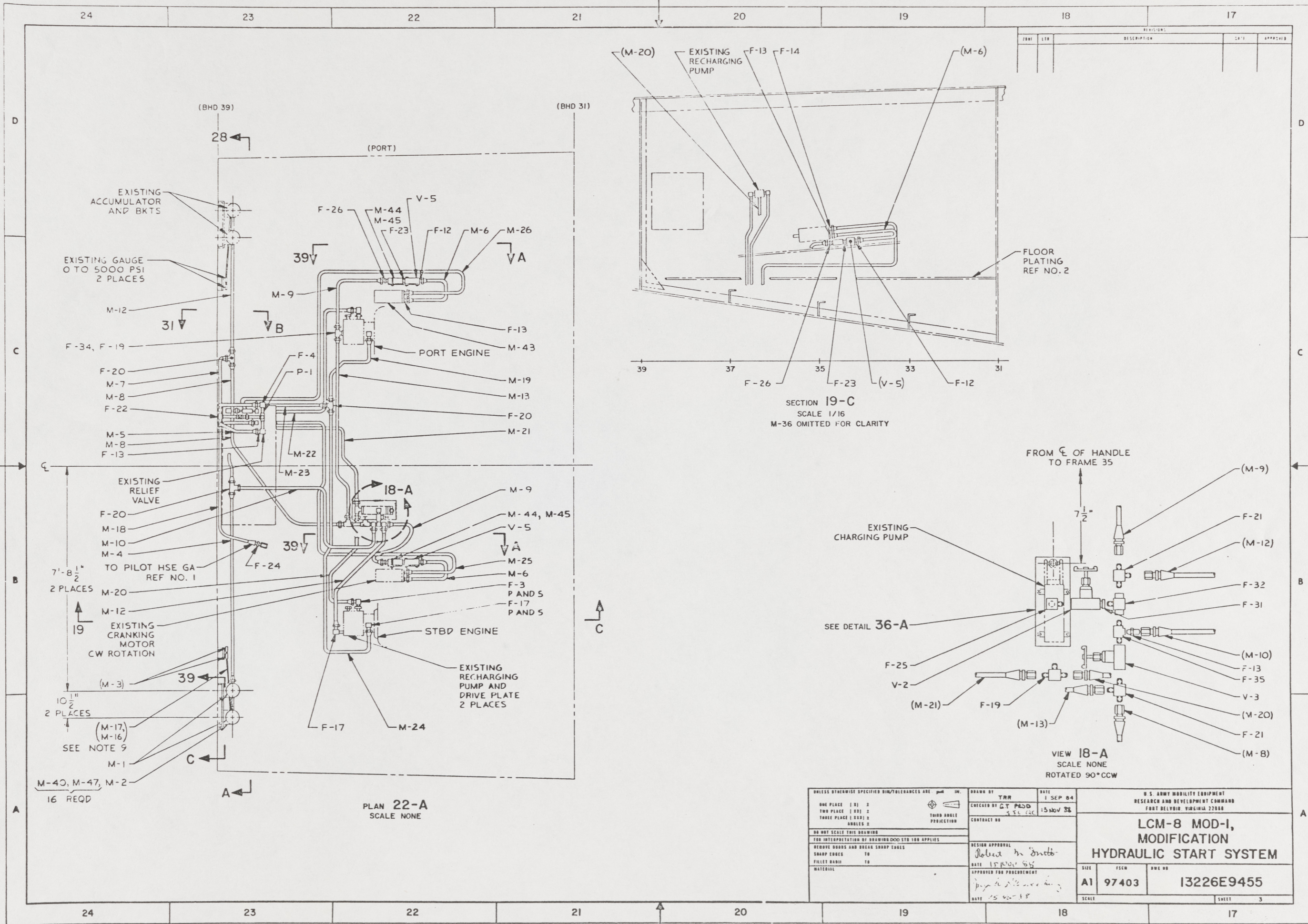


DIAGRAMMATIC
HYDRAULIC START SYSTEM

UNLESS OTHERWISE SPECIFIED DIM/TOLERANCES ARE: $\frac{1}{16}$ IN.	DRAWN BY: TRW	DATE: 1 SEP 84
ONE PLACE (1 01) 2	CHECKED BY: CT M... SFC SFC	15 NOV 88
TWO PLACE (1 02) 3	CONTRACT NO:	
THREE PLACE (1 03) 4	DESIGN APPROVAL: J... DATE: 15 NOV 88	
FOUR PLACE (1 04) 5	APPROVED FOR PROCUREMENT: DATE: 15 NOV 88	
DO NOT SCALE THIS DRAWING		
FOR INTERPRETATION OF DRAWING DOD STD 100 APPLIES		
REMOVE SHARP AND BREAK SHARP EDGES		
SHARP EDGES TO		
FILED RADIUS TO		
MATERIAL:		

U.S. ARMY MOBILITY EQUIPMENT RESEARCH AND DEVELOPMENT COMMAND FORT BELVOIR, VIRGINIA 22060		
LCM-8 MOD-1, MODIFICATION HYDRAULIC START SYSTEM		
SIZE: A1	FIGW: 97403	DDG 88: 13226E9455
SCALE:		SHEET: 2

22



REVISIONS				
NO.	DATE	DESCRIPTION	BY	APPROVED

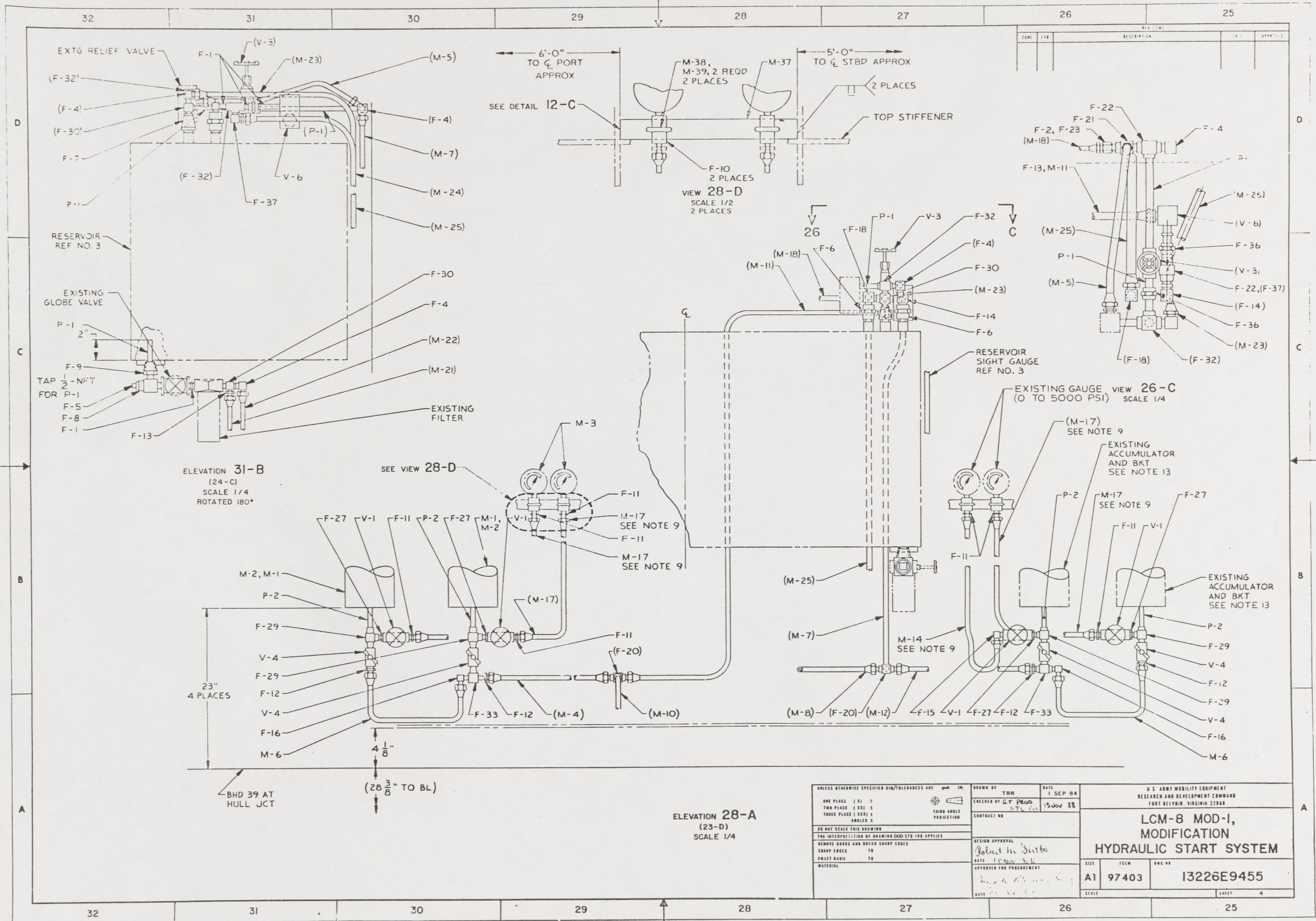
SECTION 19-C
SCALE 1/16
M-36 OMITTED FOR CLARITY

VIEW 18-A
SCALE NONE
ROTATED 90°CCW

PLAN 22-A
SCALE NONE

UNLESS OTHERWISE SPECIFIED DIM/TOLERANCES ARE IN: IN.		DRAWN BY: TRM		DATE: 1 SEP 84		U.S. ARMY MOBILITY EQUIPMENT RESEARCH AND DEVELOPMENT COMMAND FORT BELVOIR, VIRGINIA 22060	
ONE PLACE (R) 2	TWO PLACE (R) 2	THREE PLACE (R) 2	FOUR PLACE (R) 2	CHECKED BY: GY PADD	DATE: 15 NOV 83	LCM-8 MOD-1, MODIFICATION HYDRAULIC START SYSTEM	
NO HOLE SCALE: THIS DRAWING FOR INTERPRETATION BY WORKING DDD STD 100 APPLIES				DESIGN APPROVAL: Robert M Smith			
REQUIRE SHARP EDGES AND BREAK SHARP EDGES				DATE: 15 NOV 83		DATE NO: 13226E9455	SHEET 3
FILLER RADIUS TO				APPROVED FOR PROCUREMENT: [Signature]		SCALE: [Blank]	
MATERIAL TO				DATE: 15 NOV 83			

23



NO.	REV.	DESCRIPTION	DATE	APPROVED

ELEVATION 31-B
(24-C)
SCALE 1/4
ROTATED 180°

ELEVATION 28-A
(23-D)
SCALE 1/4

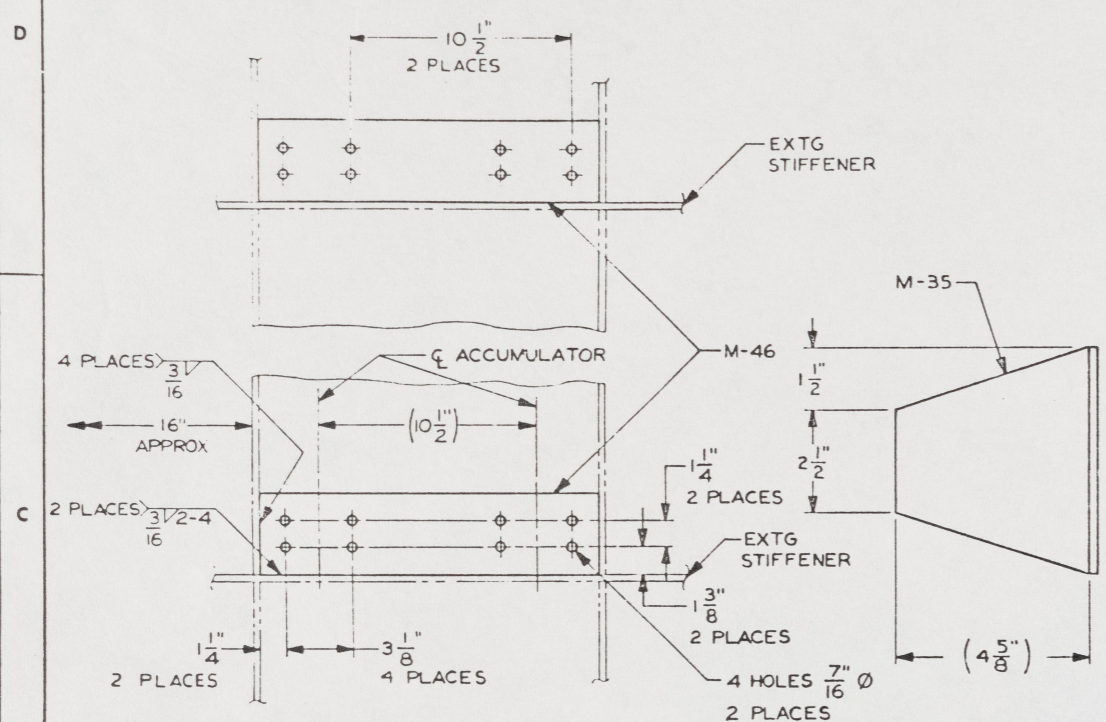
EXISTING GAUGE VIEW 26-C
(0 TO 5000 PSI)
SCALE 1/4

UNLESS OTHERWISE SPECIFIED DIM/TOLERANCES ARE IN IN.		DRAWN BY	DATE	U.S. ARMY MOBILITY EQUIPMENT RESEARCH AND DEVELOPMENT COMMAND FORT BELVOIR, VIRGINIA 22060	
ONE PLACE (±.01)	±.01	TRR	1 SEP 84	LCM-8 MOD-1, MODIFICATION HYDRAULIC START SYSTEM	
TWO PLACE (±.001)	±.001	CRICKER BY G.T. PLOD	15 NOV 88		
THREE PLACE (±.0001)	±.0001	THIRD ANGLE PROJECTION	CONTRACT NO.	SIZE	TSCN
DO NOT SCALE THIS DRAWING				A1	97403
FULL INTERPRETATION OF DRAWING DIMENSIONS APPLIES			DESIGN APPROVAL	DWG NO.	13226E9455
SHARP EDGES AND BREAK SHARP EDGES			Robert M. Sutto	SCALE	SHEET 4
ROUND EDGES TO			DATE 15 NOV 88		
FILED RADIUS TO			APPROVED FOR PROCUREMENT		
MATERIAL			DATE 15 SEP 84		

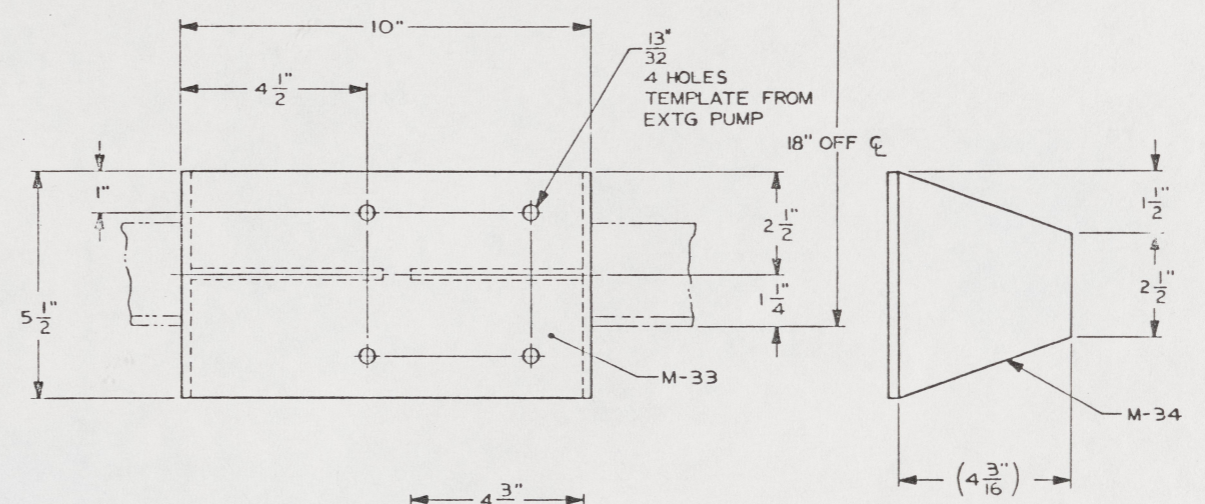
24

40 39 38 37 36 35 34 33

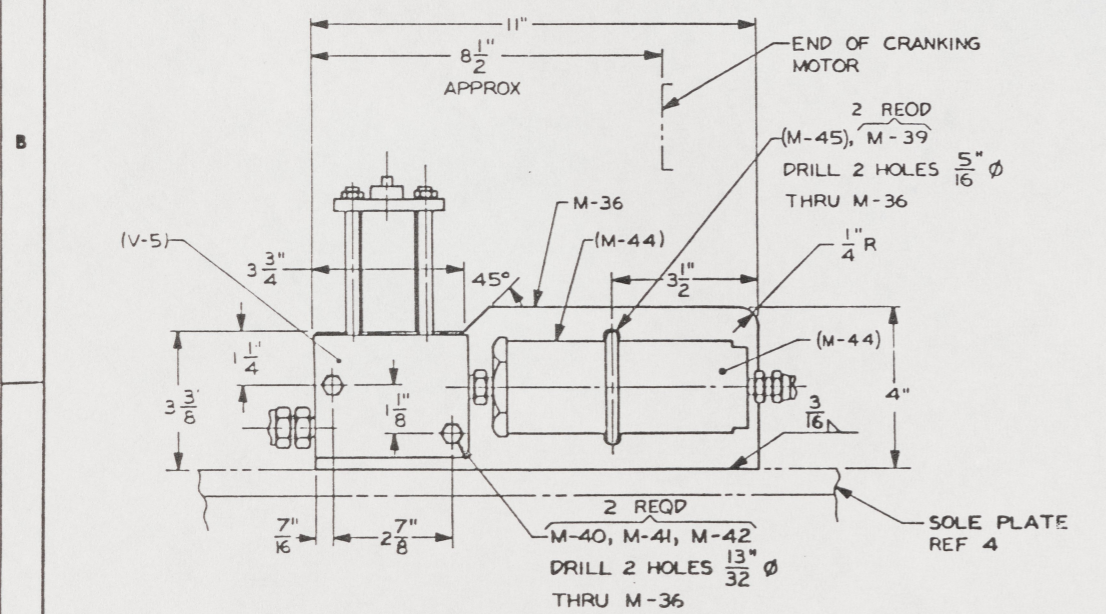
REVISIONS				
NO.	DATE	DESCRIPTION	BY	APPROVED



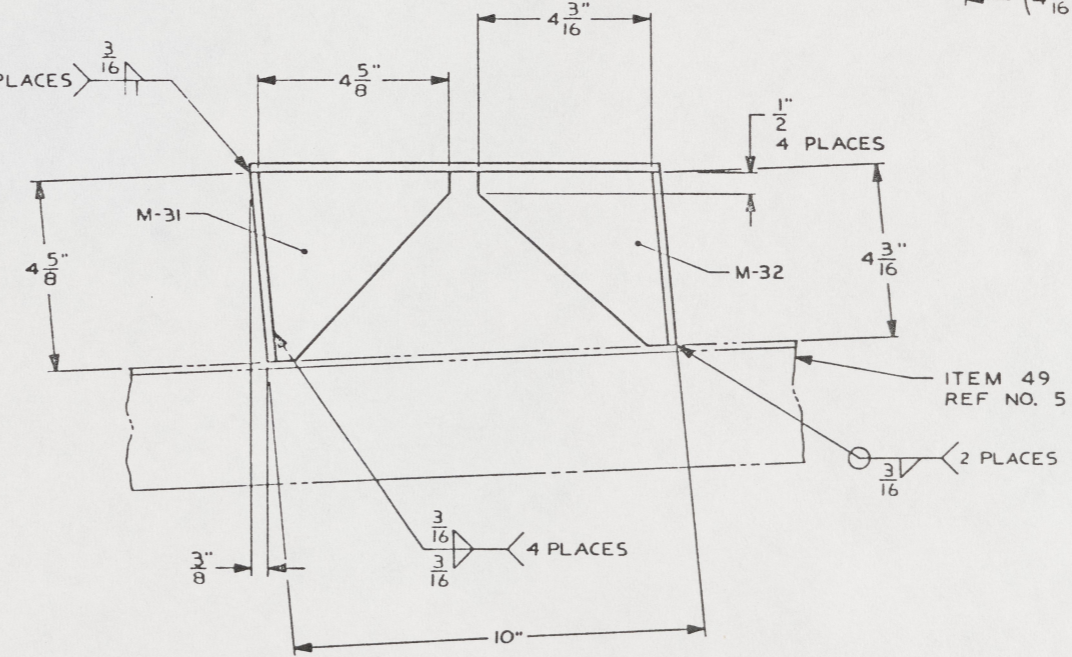
DETAIL 39-C
(23-B)
SCALE 3" = 1'-0"
ACCUMULATOR FOUNDATION



DETAIL 36-A
(19-B)
SCALE 1/2



DETAIL 39-A
(23-C)(23-B)
SCALE 1/2
ROTATED 180°



UNLESS OTHERWISE SPECIFIED DIM/TOLERANCES ARE IN IN.		DESIGNED BY EJR	DATE 20 NOV 84	U.S. ARMY MOBILITY EQUIPMENT RESEARCH AND DEVELOPMENT COMMAND FORT BELVOIR, VIRGINIA 22060	
ONE PLACE (1.0) ±	TWO PLACE (0.02) ±	CHECKED BY CT P60	15 NOV 84	LCM-8 MOD-1, MODIFICATION HYDRAULIC START SYSTEM	
THREE PLACE (0.001) ±	FOUR PLACE (0.0001) ±	CONTRACT NO.			
DO NOT SCALE THIS DRAWING FOR INTERPRETATION BY READING DOG STD 100 APPLIES		DESIGN APPROVAL <i>John H. Smith</i>	DATE 10 Dec 84	SIZE A1	PLCM 97403
REMOVE EDGES AND BREAK SHARP EDGES	SHARP EDGES TO	APPROVED FOR PROCUREMENT <i>John H. Smith</i>	DATE 28 Nov 84	FIG NO 13226E9455	SHEET 5
FILLET RADIUS TO	MATERIAL				

40 39 38 37 36 35 34 33

25