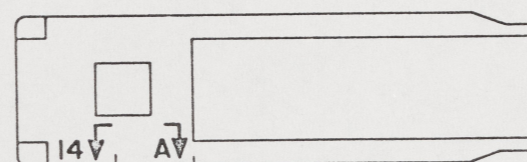


NOTES:

1. THIS DRAWING HAS BEEN DEVELOPED FROM SHIPCHECK INFORMATION FOR ACCOMPLISHING THE INSTALLATION OF MODIFICATIONS TO THE BATTERY BOX FOUNDATION ON LCM-8, MOD-1.
2. ALL FABRICATION WELDING AND INSPECTION TO BE IN ACCORDANCE WITH NAVSEA 0900-LP-014-5010, WELD SIZES BASED ON USE OF AWS A5.1, CLASS E7018 ELECTRODES FOR LC STEEL TO LC STEEL.
3. EQUIPMENT AND WORKMANSHIP SHALL BE IN ACCORDANCE WITH USCG AND ABS REGULATIONS.
4. REPAIR ALL PAINT DAMAGED BY THIS INSTALLATION AND PAINT ALL NEW STEEL IN ACCORDANCE WITH U.S. ARMY TECHNICAL BULLETIN TB43-0144.
5. MATERIAL ORDERED ON THIS DRAWING IS NOT INTENDED TO BE RESTRICTIVE. SUBSTITUTION OF EQUAL QUALITY MATERIAL MAY BE MADE EXCEPT ITEMS MARKED GFE.
6. SLIGHT DEVIATIONS FROM DIMENSIONS SHOWN ARE PERMISSIBLE TO SUIT ACTUAL CONDITIONS FOUND ABOARD THE VESSEL.
7. COMPONENTS SHOWN BY SOLID, HEAVY LINES ARE NEW AND ARE TO BE INSTALLED IN ACCORDANCE WITH THIS DRAWING. PHANTOM LINES INDICATE EXISTING COMPONENTS INSTALLED BY DRAWINGS REFERENCED AS NOTED.
8. BATTERY BOX AND COVER SHALL BE MADE FROM 3/8" PLYWOOD, REF. VIEW 12-C, SHEET 2. BOX SHALL BE FIBERGLASS SPRAYED AND GELCOAT PAINTED (GREY) INSIDE AND OUTSIDE. EACH BATTERY (2) SHALL BE SUPPORTED WITH HEOPRENE RUBBER SHEET, 3/4" THICK ON BOTTOM SURFACE. BATTERY BOX MAY BE PURCHASED FROM "CHAMBERS INDUSTRIAL SUPPLY, INC. 5608 SALMEN (ELMWOOD INDUSTRIAL PARK), HARAHAN, LA, 70123-2245".

REFERENCE DRAWINGS APPLICABLE TO HULL NUMBERS 8540 THRU 8560 AND 8580 THRU 8618		
NO.	DRAWING NO.	TITLE
1	13226E9464	LCM-8, MOD-1 MISC STRUCTURAL DETAILS
2	145-4510914	LCM-8, MOD-1 HULL PLATING SIDE/INBOARD LONGITUDINAL BULKHEAD

REFERENCE DRAWINGS APPLICABLE TO HULL NUMBERS 8520 THRU 8539		
NO.	DRAWING NO.	TITLE
1	13226E9464	LCM-8, MOD-1 MISC STRUCTURAL DETAILS
2	145-2534200	LCM-8, MOD-1 HULL PLATING SIDE/INBOARD LONGITUDINAL BULKHEAD



KEY VIEW

VIEW 5-A  
SCALE NONE

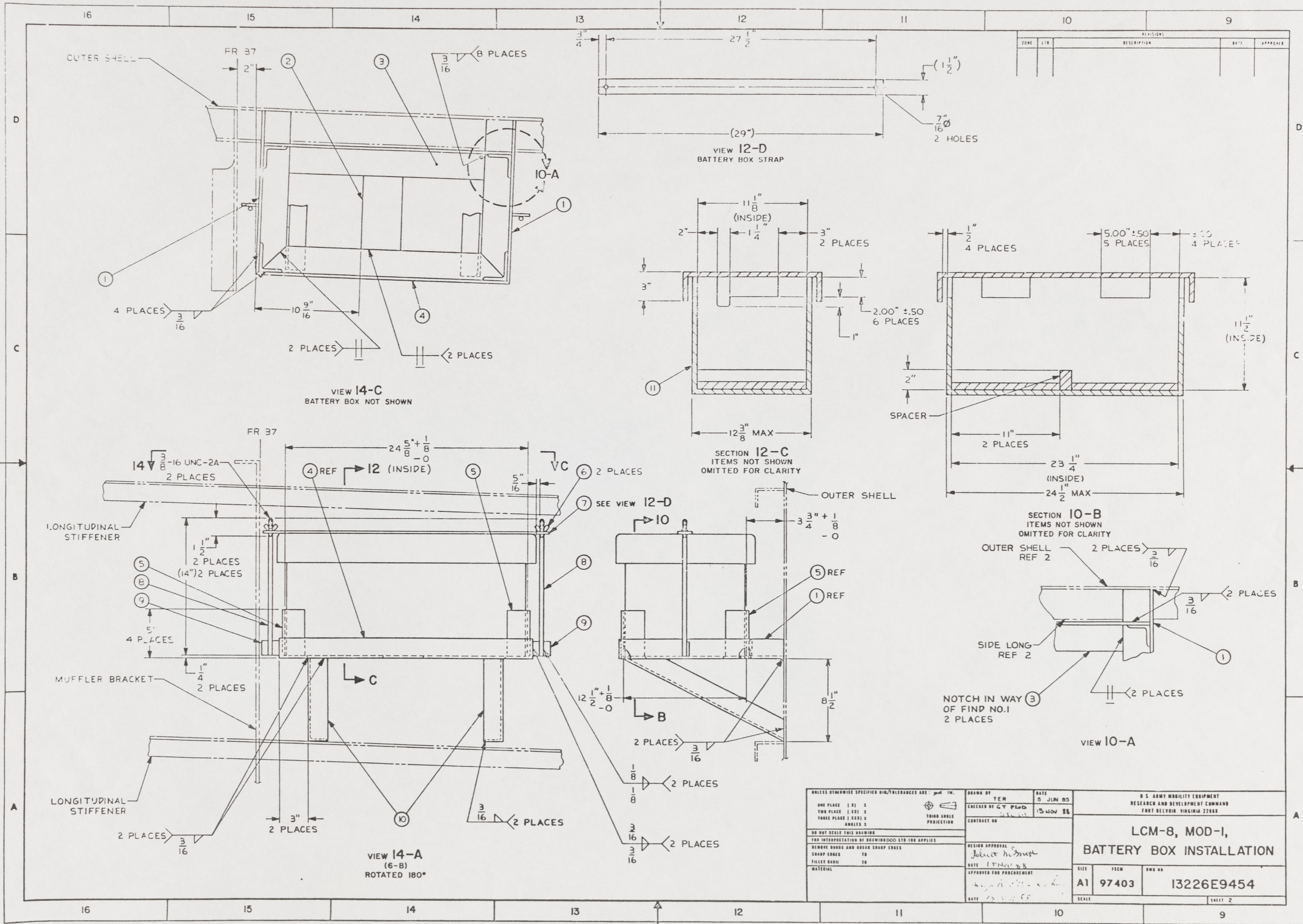
THIS DRAWING APPLIES  
TO HULL NUMBERS  
8520 THROUGH 8560 AND  
8580 THROUGH 8618 ONLY

STATUS OF REVISIONS			
NO.	DATE	BY	DESCRIPTION

GFE	YARD	QTY	DESCRIPTION	COML	MATERIAL
		1	BATTERY BOX W/COVER (SEE NOTE B)		VARIOUS
	10	2	ANGLE, 2" X 2" X 1/4" STK	ASTM A36	STEEL
	9	2	FLAT BAR, 1/4" X 1 1/2" X 1 3/4" L	ASTM A36	STEEL
	8	2	RD BAR, 3/8" DIA X 14" L	ASTM A36	STEEL
	7	1	FLAT BAR, 1/4" X 1 1/2" X 20" L	ASTM A36	STEEL
	6	2	NUT, PLAIN, WING, 3/8-16 UNC-2B		STEEL
	5	4	ANGLE, 2" X 2" X 1/4" STK	ASTM A36	STEEL
	4	1	ANGLE, 3" X 2" X 1/4" STK	ASTM A36	STEEL
	3	1	ANGLE, 3" X 2" X 1/4" STK	ASTM A36	STEEL
	2	1	FLAT BAR, 1/4" X 4"	ASTM A36	STEEL
	1	2	ANGLE, 3" X 2" X 1/4" STK	ASTM A36	STEEL

<p>UNLESS OTHERWISE SPECIFIED DIM/TOLERANCES ARE IN INCHES</p> <p>FRACTIONS 1/8</p> <p>ONE PLACE (XX) 1/16</p> <p>TWO PLACE (XXX) 1/32</p> <p>THREE PLACE (XXXX) 1/64</p> <p>DECIMALS 2</p> <p>DO NOT SCALE THIS DRAWING</p> <p>FOR INTERPRETATION OF DRAWING DIMENSIONS AND APPLICATIONS</p> <p>REMOVE EDGES AND BREAK SHARP EDGES</p> <p>SHARP EDGES 10</p> <p>FILLET RADIUS 10</p> <p>MATERIAL</p>	<p>DRAWN BY KL</p> <p>CHECKED BY C.T. Pado</p> <p>DATE 16 MAR 85</p> <p>CONTRACT NO. 154407 976</p> <p>DESIGN APPROVAL</p> <p>DATE 15 NOV 84</p> <p>APPROVED FOR PROCUREMENT</p> <p>DATE 15 NOV 84</p>	<p>U.S. ARMY MOBILITY EQUIPMENT RESEARCH AND DEVELOPMENT COMMAND FORT BELLEVILLE, ILLINOIS 62208</p> <p>LCM-8, MOD-1, BATTERY BOX INSTALLATION</p> <p>SIZE A1</p> <p>NSN 97403</p> <p>DWG NO. 13226E9454</p> <p>SCALE NONE</p> <p>SHEET 1 OF 2</p>
---	--	--

19



REVISIONS			
ZONE	LTN	DESCRIPTION	DATE

UNLESS OTHERWISE SPECIFIED DIM/TOLERANCES ARE: $\frac{1}{16}$ IN. MIN.		DRAWN BY: YER		DATE: 5 JUN 55		U.S. ARMY MOBILITY EQUIPMENT RESEARCH AND DEVELOPMENT COMMAND, FORT BELVOIR, VIRGINIA 22060	
ONE PLACE (1) 0.1	TWO PLACE (2) 0.05	THREE PLACE (3) 0.01	FOUR PLACE (4) 0.005	CHECKED BY: C. J. PLOD	DATE: 15 NOV 55	LCM-8, MOD-1, BATTERY BOX INSTALLATION	
DO NOT SCALE THIS DRAWING				CONTRACT NO.			
FOR INTERPRETATION OF DRAWING GO TO 100 APPLIES				DESIGN APPROVAL: <i>John H. Smith</i>		DWA NO: 13226E9454	
REMOVE ROUNDS AND BREAK SHARP EDGES TO SHARP EDGES TO				DATE: 15 NOV 55		SCALE: SHEET 2	
FILLET RADIUS TO				APPROVED FOR PROCUREMENT: <i>John H. Smith</i>		DATE: 15 NOV 55	
MATERIAL							

20