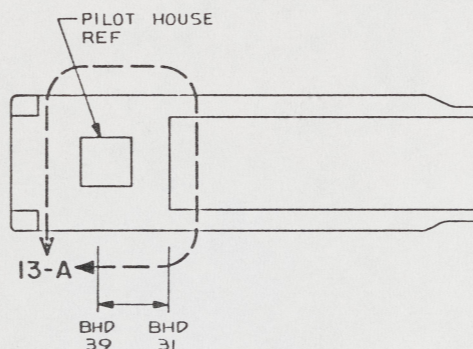


NOTES

1. TEMPLATE FLOORPLATES AND FLOOR SUPPORT PATTERN TO SUIT ARRANGEMENT OF MACHINERY, EQUIPMENT AND FOUNDATIONS.
2. EQUIPMENT AND WORKMANSHIP SHALL BE IN ACCORDANCE WITH USCG AND ABS REGULATIONS.
3. REPAIR ALL PAINT DAMAGED BY THIS INSTALLATION AND PAINT ALL NEW STEEL IN ACCORDANCE WITH U.S. ARMY TECHNICAL BULLETIN "843-0144".
4. SLIGHT DEVIATIONS FROM DIMENSIONS SHOWN ARE PERMISSIBLE TO SUIT ACTUAL CONDITIONS FOUND ABOARD THE VESSEL.
5. NON-DIMENSIONED CUTOUTS APPEAR IN GENERAL AREA OF PIPES, TUBING AND EQUIPMENT. LOCATE CUTOUTS TO SUIT ACTUAL CONDITIONS FOUND ABOARD THE VESSEL.
6. ALUMINUM WELDING TO BE IN ACCORDANCE WITH MIL-STD-278.
7. STEEL FABRICATION WELDING AND INSPECTION TO BE IN ACCORDANCE WITH NAVSEA 0900-LP-014-5010. WELD SIZES BASED ON USE OF AWS A5.1, CLASS E7018 ELECTRODES FOR LC STEEL TO LC STEEL.
8. COMPONENTS SHOWN BY SOLID, HEAVY LINES ARE NEW, ORDERED AND INSTALLED IN ACCORDANCE WITH THIS DRAWING. LIGHT, BROKEN OR PHANTOM LINES INDICATE COMPONENTS EXISTING OR ORDERED ON AND INSTALLED BY DRAWINGS REFERENCED AS NOTED.
9. FLOOR PLATING SHALL BE RAISED TO CLEAR PROPULSION SHAFTING PORT AND STARBOARD USING VIEW 19-B AS A GUIDE.
10. SPACE FLOOR PLATE SCREWS, FIND NO. 57, APPROXIMATELY 10.00 APART.

REFERENCE DRAWINGS APPLICABLE TO HULL NUMBERS 8540 THRU 8560 AND 8580 THRU 8618		
NO.	DRAWING NO.	TITLE
1	145-4510913	LONGITUDINAL TRUSSES
2	145-4510915	BOTTOM PLATING
3	145-4510918	FRAMING SECTIONS
4	13226E9448	LCM-8, MOD-1, ENGINE FOUNDATIONS
5	13226E9456	LCM-8, MOD-1, MODIFICATION BILGE PIPING SYSTEM
6	145-4510921	BULKHEADS AND TRANSOM DETAILS
7	145-4510934	BITTS, CHOCKS, LIFE LINES AND LADDERS

REFERENCE DRAWINGS APPLICABLE TO HULL NUMBERS 8520 THRU 8539		
NO.	DRAWING NO.	TITLE
1	145-2534193	LONGITUDINAL TRUSSES
2	145-2534201	BOTTOM PLATING
3	145-2534194	FRAMING SECTIONS
4	13226E9448	LCM-8, MOD-1, ENGINE FOUNDATIONS
5	13229E2253	LCM-8, MOD-1, BILGE SYSTEM PIPING ARRANG.
6	145-2534195	BULKHEADS AND TRANSOM DETAILS
7	145-2534246	BITTS, CHOCKS, LIFE LINES AND LADDERS



KEY PLAN 5-B  
SCALE NONE

THIS DRAWING APPLIES  
TO HULL NUMBERS  
8520 THROUGH 8560 AND  
8580 THROUGH 8618 ONLY

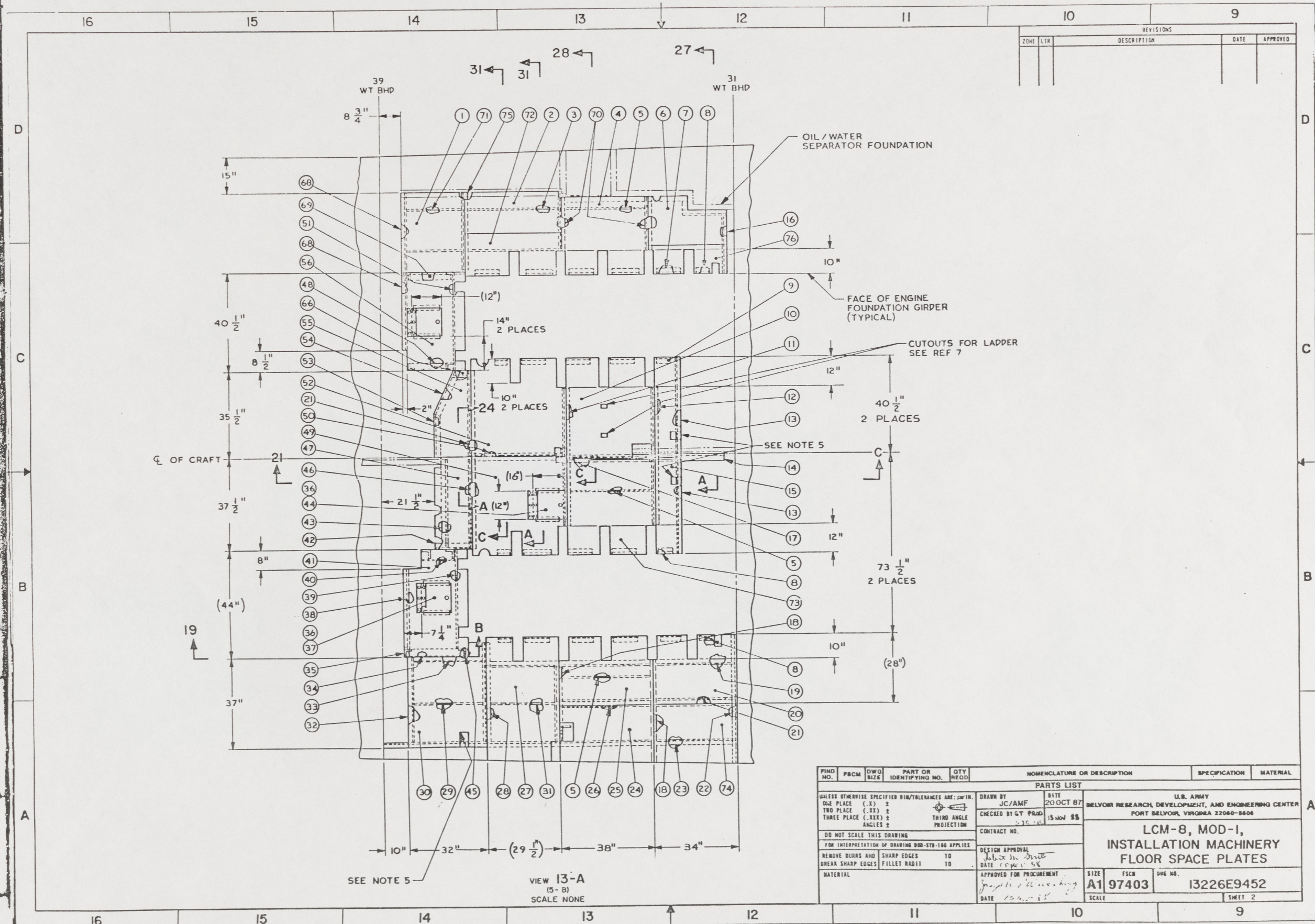
YARD	FIND NO.	FSCM	DWG SIZE	PART OR IDENTIFYING NO.	QTY REQD	SPECIFICATION	MATERIAL
YARD 77				1 ANGLE, 3/16 X 1 1/2 X 1 1/2 X 15 LG		ASTM A36	STEEL
YARD 76	6061-T6			1 FLOOR PLATE, DIAMOND TREAD, 3/16 X 12 X 32		ASTM B632	AL ALY
YARD 75				1 ANGLE, 1/4 X 2 1/2 X 2 1/2 X 22 LG		ASTM A36	STEEL
YARD 74	6061-T6			1 FLOOR PLATE, DIAMOND TREAD, 3/16 X 28 X 34 LG		ASTM B632	AL ALY
YARD 73	6061-T6			1 FLOOR PLATE, DIAMOND TREAD, 3/16 X 36 X 40 LG		ASTM B632	AL ALY
YARD 72	6061-T6			1 FLOOR PLATE, DIAMOND TREAD, 3/16 X 16 X 30 LG		ASTM B632	AL ALY
YARD 71	6061-T6			1 BAR, 1/4 X 2 X 23 LG		ASTM B221	AL ALY
YARD 70				2 ANGLE, 3/16 X 1 1/2 X 1 1/2 X 22 LG		ASTM A36	STEEL
YARD 69				1 ANGLE, 1/4 X 2 1/2 X 2 1/2 X 26 LG		ASTM A36	STEEL
YARD 68				2 ANGLE, 3/16 X 1 1/2 X 1 1/2 X 32 LG		ASTM A36	STEEL
YARD 67	6061-T6			6 BAR, 3/16 X 1 1/2 X 12		ASTM B221	AL ALY
YARD 66				1 ANGLE, 1/4 X 2 1/2 X 2 1/2 X 6 LG		ASTM A36	STEEL
YARD 65				1 ANGLE, 3/16 X 1 1/2 X 1 1/2 X 20 LG		ASTM A36	STEEL
YARD 64				2 ANGLE, 3/16 X 1 1/2 X 1 1/2 X 9 LG		ASTM A36	STEEL
YARD 63				2 ANGLE, 3/16 X 1 1/2 X 1 1/2 X 13 LG		ASTM A36	STEEL
YARD 62				2 ANGLE, 3/16 X 1 1/2 X 1 1/2 X 7 LG		ASTM A36	STEEL
YARD 61	MS35649-2254	18		NUT, HEX., 250-20 UNC-28			CRES
YARD 60	MS35338-139	18		WASHER, LOCK-SPRING, 1/4 NOM SIZE			CRES
YARD 59	MS35307-305	18		SCREW, CAP, HEX NO., 250-20 UNC-2A X .63 LG			CRES
YARD 58				1 ANGLE, 3/16 X 1 1/2 X 1 1/2 X 12 LG		ASTM A36	STEEL
YARD 57	MS1957-79	AR		SCREW, MACH, PAN HD., 250-20 UNC-2A X .50 LG			CRES
YARD 56	6061-T6			1 FLOOR PLATE, DIAMOND TREAD, 3/16 X 26 X 40 1/2		ASTM B632	AL ALY
YARD 55	6061-T6			1 FLOOR PLATE, DIAMOND TREAD, 3/16 X 16 X 35 1/2		ASTM B632	AL ALY
YARD 54				1 ANGLE, 3/16 X 1 1/2 X 1 1/2 X 20 LG		ASTM A36	STEEL

YARD	FIND NO.	FSCM	DWG SIZE	PART OR IDENTIFYING NO.	QTY REQD	SPECIFICATION	MATERIAL
YARD 53				1 ANGLE, 3/16 X 1 1/2 X 1 1/2 X 18 LG		ASTM A36	STEEL
YARD 52	6061-T6			1 FLOOR PLATE, DIAMOND TREAD, 3/16 X 38 X 41		ASTM B632	AL ALY
YARD 51				1 BAR, 1/4 X 2 X 40 1/2 LG		ASTM A36	STEEL
YARD 50				1 ANGLE, 1/4 X 2 1/2 X 2 1/2 X 35 LG		ASTM A36	STEEL
YARD 49	6061-T6			1 FLOOR PLATE, DIAMOND TREAD, 3/16 X 38 X 35		ASTM B632	AL ALY
YARD 48				1 ANGLE, 1/4 X 2 1/2 X 2 1/2 X 24 LG		ASTM A36	STEEL
YARD 47	6061-T6			1 FLOOR PLATE, DIAMOND TREAD, 3/16 X 16 X 37 1/2		ASTM B632	AL ALY
YARD 46				1 ANGLE, 1/4 X 2 1/2 X 2 1/2 X 37 LG		ASTM A36	STEEL
YARD 45				4 ANGLE, 1/4 X 2 1/2 X 2 1/2 X AR L		ASTM A36	STEEL
YARD 44	6061-T6			1 FLOOR PLATE, DIAMOND TREAD, 3/16 X 12 X 16		ASTM B632	AL ALY
YARD 43				1 ANGLE, 1/4 X 2 1/2 X 2 1/2 X 36		ASTM A36	STEEL
YARD 42				1 ANGLE, 1/4 X 2 1/2 X 2 1/2 X 14 3/4 LG		ASTM A36	STEEL
YARD 41	6061-T6			1 FLOOR PLATE, DIAMOND TREAD, 3/16 X 26 X 44		ASTM B632	AL ALY
YARD 40				1 ANGLE, 1/4 X 2 1/2 X 2 1/2 X 14 LG		ASTM A36	STEEL
YARD 39	6061-T6			1 BAR, 1/4 X 2 X 41 1/2 LG		ASTM B221	AL ALY
YARD 38	6061-T6			1 BAR, 1/4 X 2 X 33 1/2 LG		ASTM B221	AL ALY
YARD 37	6061-T6			2 FLOOR PLATE, DIAMOND TREAD, 3/16 X 12 X 12		ASTM B632	AL ALY
YARD 36	MS35826-12C	3		HINGE, 2 1/2" OPEN X .060 X 12" LG			CRES
YARD 35				4 ANGLE, 1/4 X 2 1/2 X 2 1/2 X AR L		ASTM A36	STEEL
YARD 34				1 ANGLE, 1/4 X 2 1/2 X 2 1/2 X 26 LG		ASTM A36	STEEL
YARD 33				1 ANGLE, 1/4 X 2 1/2 X 2 1/2 X 29 1/2 LG		ASTM A36	STEEL
YARD 32				1 ANGLE, 3/16 X 1 1/2 X 1 1/2 X 35 1/2 LG		ASTM A36	STEEL
YARD 31	6061-T6			1 BAR, 1/4 X 2 X 26 LG		ASTM B221	AL ALY
YARD 30	6061-T6			1 FLOOR PLATE, DIAMOND TREAD, 3/16 X 32 X 42		ASTM B632	AL ALY
YARD 29	6061-T6			1 BAR, 1/4 X 2 X 29 1/2 LG		ASTM B221	AL ALY
YARD 28				1 ANGLE, 1/4 X 2 1/2 X 2 1/2 X 40 LG		ASTM A36	STEEL
YARD 27	6061-T6			1 FLOOR PLATE, DIAMOND TREAD, 3/16 X 29 1/2 X 52		ASTM B632	AL ALY
YARD 26				1 ANGLE, 1/4 X 2 1/2 X 2 1/2 X 36 1/2 LG		ASTM A36	STEEL
YARD 25	6061-T6			1 FLOOR PLATE, DIAMOND TREAD, 3/16 X 28 X 38		ASTM B632	AL ALY
YARD 24	6061-T6			1 FLOOR PLATE, DIAMOND TREAD, 3/16 X 24 X 38		ASTM B632	AL ALY
YARD 23				1 ANGLE, 3/16 X 1 1/2 X 1 1/2 X 144 LG		ASTM A36	STEEL
YARD 22				1 ANGLE, 3/16 X 1 1/2 X 1 1/2 X 62 LG		ASTM A36	STEEL
YARD 21				2 ANGLE, 1/4 X 2 1/2 X 2 1/2 X 35" LG		ASTM A36	STEEL
YARD 20	6061-T6			1 FLOOR PLATE, DIAMOND TREAD, 3/16 X 28 X 34		ASTM B632	AL ALY
YARD 19				1 ANGLE, 3/16 X 1 1/2 X 1 1/2 X 102 LG		ASTM A36	STEEL
YARD 18				2 ANGLE, 1/4 X 2 1/2 X 2 1/2 X 31 LG		ASTM A36	STEEL
YARD 17				1 ANGLE, 1/4 X 2 1/2 X 2 1/2 X 38 LG		ASTM A36	STEEL
YARD 16				1 ANGLE, 3/16 X 1 1/2 X 1 1/2 X 24 LG		ASTM A36	STEEL
YARD 15	6061-T6			1 FLOOR PLATE, DIAMOND TREAD, 3/16 X 10 1/2 X 40 1/2		ASTM B632	AL ALY
YARD 14				1 ANGLE, 1/4 X 2 1/2 X 2 1/2 X 28 LG		ASTM A36	STEEL
YARD 13				2 ANGLE, 3/16 X 1 1/2 X 1 1/2 X 40 1/2 LG		ASTM A36	STEEL
YARD 12				1 ANGLE, 1/4 X 2 1/2 X 2 1/2 X 40 1/2 LG		ASTM A36	STEEL
YARD 11				2 ANGLE, 1/4 X 2 1/2 X 2 1/2 X 27 LG		ASTM A36	STEEL
YARD 10	6061-T6			1 FLOOR PLATE, DIAMOND TREAD, 3/16 X 36 X 41 1/2		ASTM B632	AL ALY
YARD 9	6061-T6			1 FLOOR PLATE, DIAMOND TREAD, 3/16 X 10 1/2 X 41 1/2		ASTM B632	AL ALY
YARD 8				7 ANGLE, 3/16 X 1 1/2 X 1 1/2 X 5 LG		ASTM A36	STEEL
YARD 7				15 ANGLE, 3/16 X 1 1/2 X 1 1/2 X 10 LG		ASTM A36	STEEL
YARD 6	6061-T6			1 FLOOR PLATE, DIAMOND TREAD, 3/16 X 20 X 32		ASTM B632	AL ALY
YARD 5	6061-T6			3 BAR, 1/4 X 2 X 33 LG		ASTM B221	AL ALY
YARD 4	6061-T6			1 FLOOR PLATE, DIAMOND TREAD, 3/16 X 35 X 31		ASTM B632	AL ALY
YARD 3	6061-T6			1 BAR, 1/4 X 2 X 36 1/2 LG		ASTM B221	AL ALY
YARD 2	6061-T6			1 FLOOR PLATE, DIAMOND TREAD, 3/16 X 17 1/2 X 39		ASTM B632	AL ALY
YARD 1	6061-T6			1 FLOOR PLATE, DIAMOND TREAD, 3/16 X 26 X 32		ASTM B632	AL ALY

SUPPLIER	FIND NO.	FSCM	DWG SIZE	PART OR IDENTIFYING NO.	QTY REQD	NOMENCLATURE OR DESCRIPTION	SPECIFICATION	MATERIAL

UNLESS OTHERWISE SPECIFIED DIM/TOLERANCES ARE: $\pm .001$ IN. ONE PLACE ( ) 1/2 TWO PLACE ( ) 1/32 THREE PLACE ( ) 1/64 ANGLES 1/2	DRAWN BY: EJR CHECKED BY: G.T. 0100 CONTRACT NO. 37C 2C	DATE: 8 AUG 84 15 Nov 88
DO NOT SCALE THIS DRAWING FOR INTERPRETATION OF DIMENSIONS SEE THE APPLICABLE REMOVE BURRS AND DEBURR SHARP EDGES SHARP EDGES TO .005 FILLET RADIUS TO .005	DESIGN APPROVAL: DATE: 17 Nov 88 APPROVED FOR PROCUREMENT: DATE: 15 Nov 88	U.S. ARMY MOBILITY EQUIPMENT RESEARCH AND DEVELOPMENT COMMAND FORT BELVOIR, VIRGINIA 22060  LCM-8, MOD-1, INSTALLATION MACHINERY FLOOR SPACE PLATES SIZE: 1500 800 80 A1 97403 13226E9452 SCALE: NONE SHEET 1 OF 4

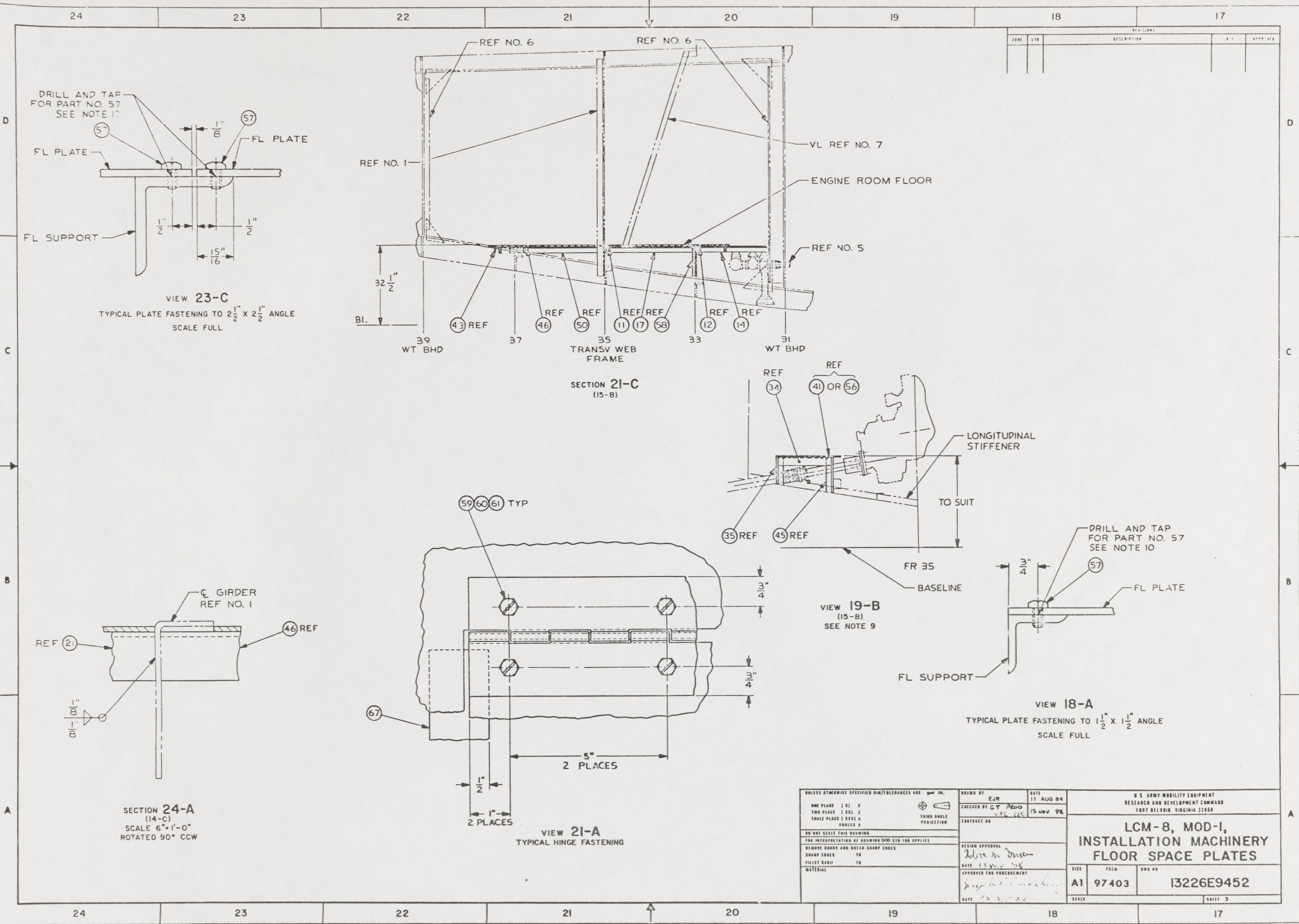


REVISIONS				
ZONE	LTR	DESCRIPTION	DATE	APPROVED

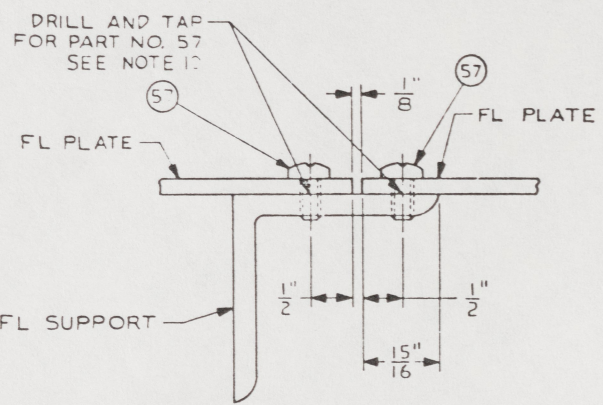
PIND NO.	FROM	DWG SIZE	PART OR IDENTIFYING NO.	QTY REQD	NOMENCLATURE OR DESCRIPTION	SPECIFICATION	MATERIAL
PARTS LIST							
UNLESS OTHERWISE SPECIFIED DIM/TOLERANCES ARE: DIM IN.					DATE	U.S. ARMY	
ONE PLACE (.X) ±					20 OCT 87	BELVON RESEARCH, DEVELOPMENT, AND ENGINEERING CENTER	
TWO PLACE (.XX) ±					CHECKED BY GT PRD	FORT BELVOIR, VIRGINIA 22060-8408	
THREE PLACE (.XXX) ±					15 NOV 88	<b>LCM-8, MOD-1, INSTALLATION MACHINERY FLOOR SPACE PLATES</b>	
ANGLES ±					CONTRACT NO.		
DO NOT SCALE THIS DRAWING							
FOR INTERPRETATION OF DRAWING DIM-STD-100 APPLIES							
REMOVE BURRS AND SHARP EDGES TO				DESIGN APPROVAL			
BREAK SHARP EDGES FILLET RADIUS TO				DATE 15 NOV 88			
MATERIAL				APPROVED FOR PROCUREMENT			
				DATE 15 NOV 88			
SIZE		FSCN		DUG NO.		SHEET 2	
A1		97403		I3226E9452			
SCALE							

VIEW 13-A  
(5-B)  
SCALE NONE

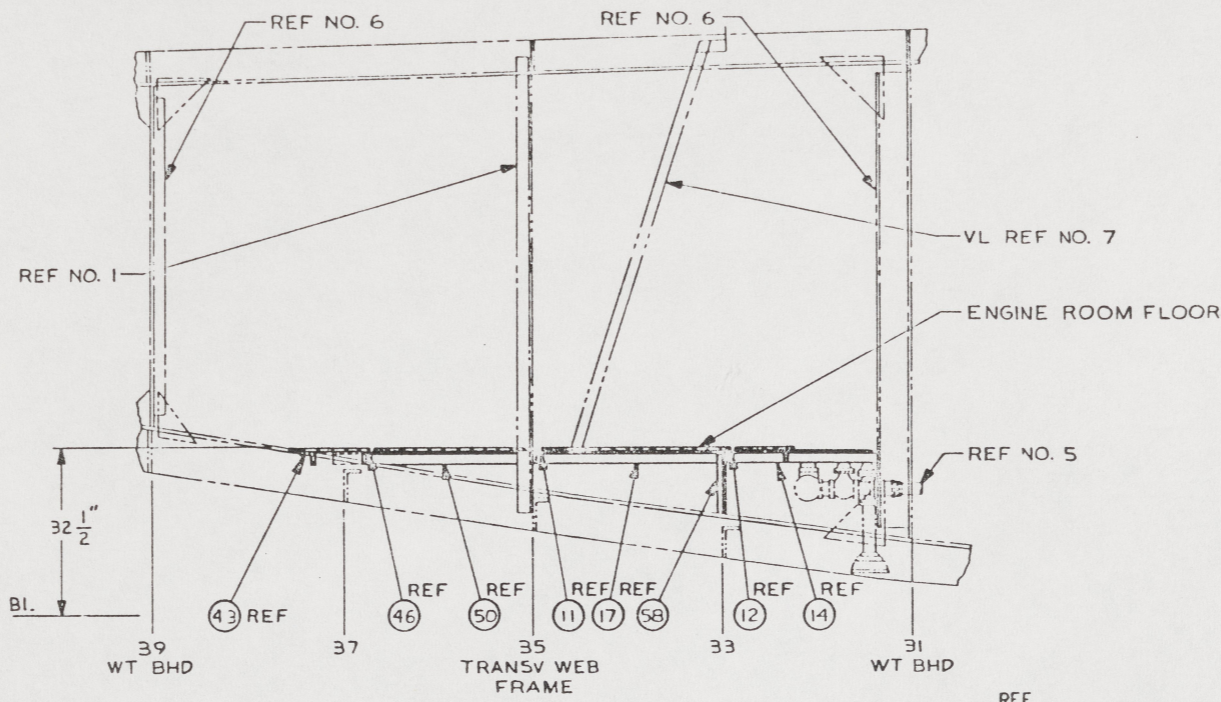
H



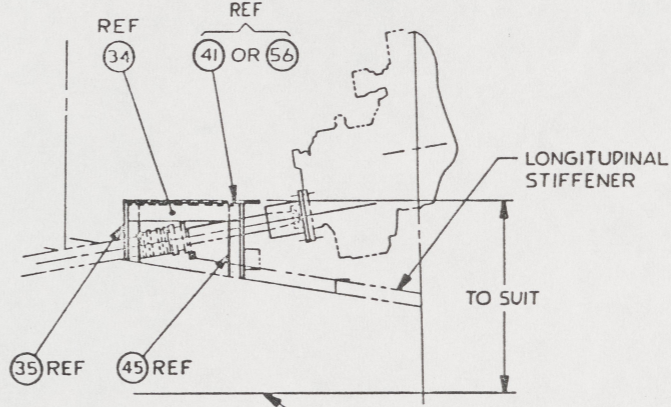
ZONE	LTN	DESCRIPTION	DATE	APPROVED



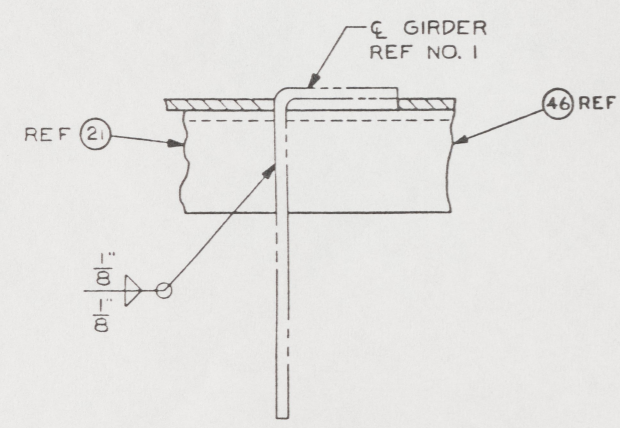
VIEW 23-C  
TYPICAL PLATE FASTENING TO 2 1/2 X 2 1/2 ANGLE  
SCALE FULL



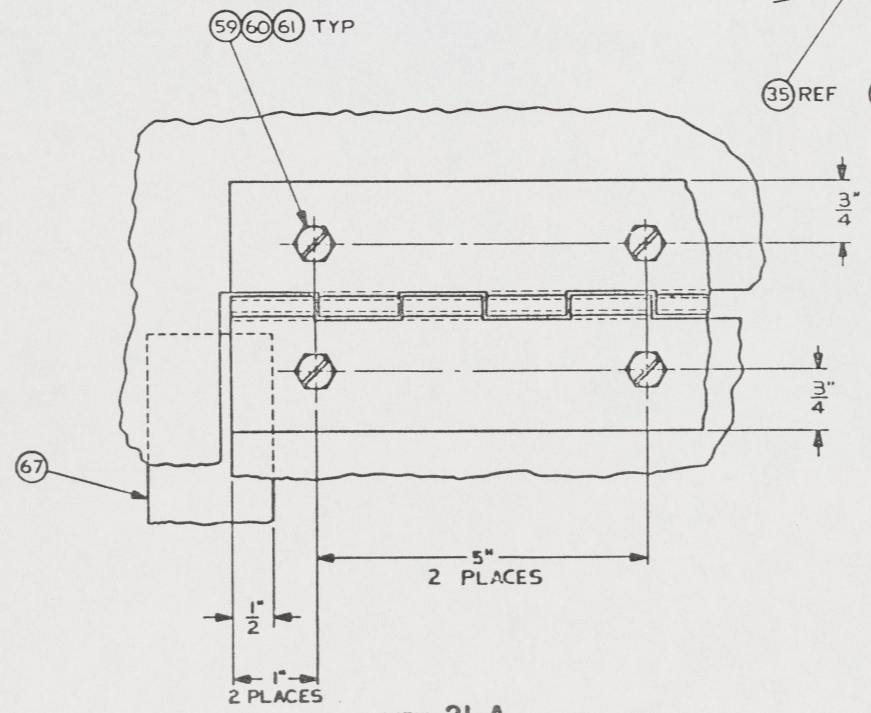
SECTION 21-C  
(15-B)



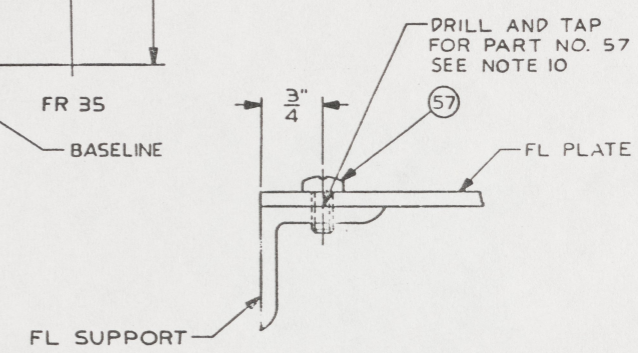
VIEW 19-B  
(15-B)  
SEE NOTE 9



SECTION 24-A  
(14-C)  
SCALE 6"=1'-0"  
ROTATED 90° CCW



VIEW 21-A  
TYPICAL HINGE FASTENING



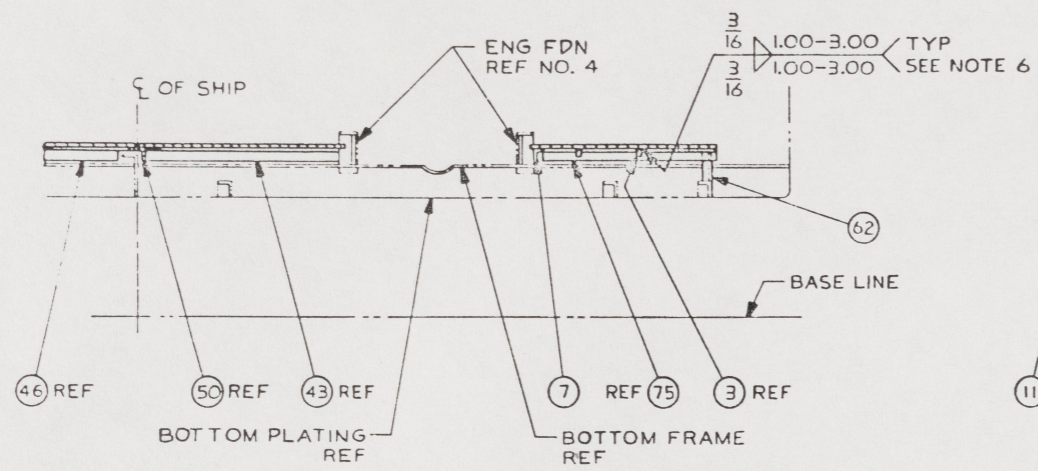
VIEW 18-A  
TYPICAL PLATE FASTENING TO 1 1/2 X 1 1/2 ANGLE  
SCALE FULL

UNLESS OTHERWISE SPECIFIED DIM/TOLERANCES ARE: 1/16" MIN.		DRAWN BY: EJR	DATE: 11 AUG 84	U.S. ARMY MOBILITY EQUIPMENT RESEARCH AND DEVELOPMENT COMMAND FORT BELVOIR, VIRGINIA 22060	
ONE PLACE (1 OF 2)	THIRD ANGLE PROJECTION	CHECKED BY: G.T. PADO	15 NOV 98	LCM-8, MOD-1, INSTALLATION MACHINERY FLOOR SPACE PLATES	
TWO PLACE (2 OF 2)		CONTRACT NO:			
THREE PLACE (3 OF 3)		DESIGN APPROVAL:		SIZE: A1	PAGE: 97403
FOUR PLACE (4 OF 4)		DATE: 11 NOV 98		DWG NO: 13226E9452	
FILLET RADIUS: TO		APPROVED FOR PURCHASEMENT:		SCALE:	SHEET 3
MATERIAL:		DATE: 15 NOV 98			

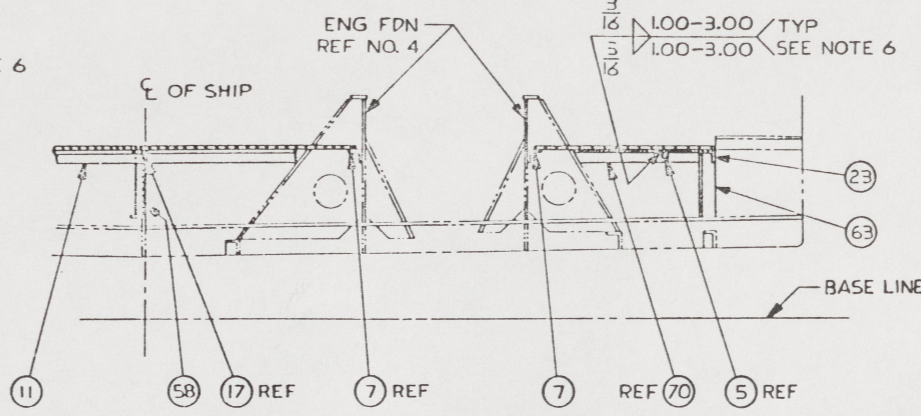
15

32 31 30 29 28 27 26 25

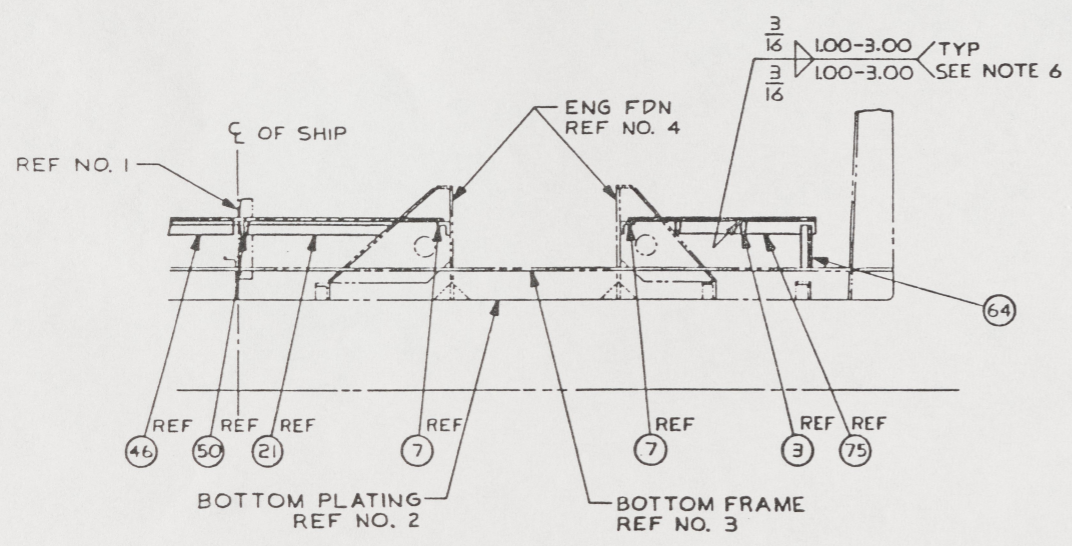
REVISED		DESCRIPTION	DATE	APPROVED



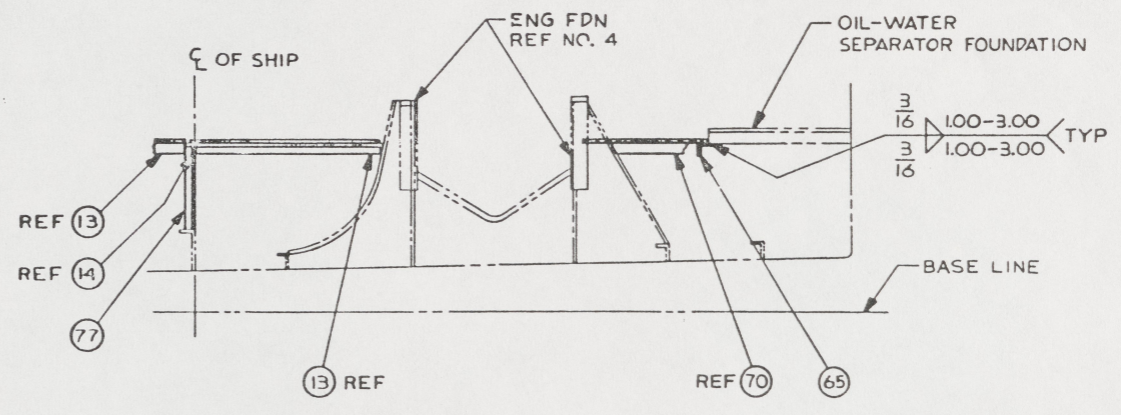
SECTION 31-C  
(14-D)  
ROTATED 90° CW  
FR 37



SECTION 28-C  
(13-D)  
ROTATED 90° CW  
FR 35



SECTION 31-A  
(13-D)  
ROTATED 90° CW  
FR 36



SECTION 27-A  
(12-D)  
ROTATED 90° CW  
FR 32

UNLESS OTHERWISE SPECIFIED DIM/TOLERANCES ARE IN IN.		DRAWN BY EJR	DATE 15 AUG 64	U.S. ARMY MOBILITY EQUIPMENT RESEARCH AND DEVELOPMENT COMMAND FORT BELVOIR, VIRGINIA 22060	
ONE PLACE (0.1)	3	CHECKED BY DT PDD	DATE 15 NOV 68	LCM-8, MOD-1, INSTALLATION MACHINERY FLOOR SPACE PLATES	
TWO PLACE (0.01)	3	CONTRACT NO.			
THREE PLACE (0.001)	3	DESIGN APPROVAL <i>John H. Smith</i>	DATE 15 NOV 68	SIZE A1	PSCN 97403
FOUR PLACE (0.0001)	3	APPROVED FOR PROCUREMENT <i>John H. Smith</i>	DATE 15 NOV 68	ONE NO. 13226E9452	
NO DIM SCALE THIS DRAWING				SCALE	SHEET 4

16

32 31 30 29 28 27 26 25