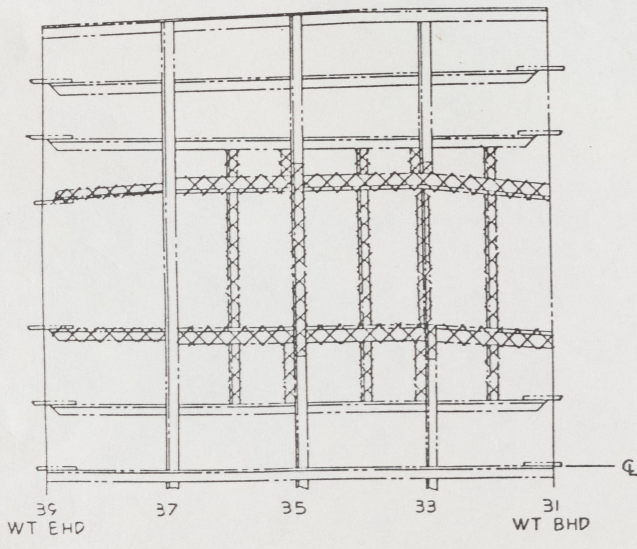


NOTES:

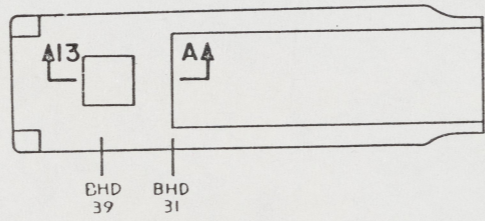
1. THIS DRAWING HAS BEEN DEVELOPED FROM SHIPCHECK INFORMATION FOR ACCOMPLISHING THE INSTALLATION OF ENGINE FOUNDATIONS ON LCM-B, MOD-1.
2. ALL FABRICATION WELDING AND INSPECTION TO BE IN ACCORDANCE WITH NAVSEA 0900-LP-014-5010, WELD SIZES BASED ON USE OF AWS A5.1, CLASS E7018 ELECTRODES FOR LC STEEL TO LC STEEL.
3. EQUIPMENT AND WORKMANSHIP SHALL BE IN ACCORDANCE WITH USCG AND ABS REGULATIONS.
4. REPAIR ALL PAINT DAMAGED BY THIS INSTALLATION AND PAINT ALL NEW STEEL IN ACCORDANCE WITH U.S. ARMY TECHNICAL BULLETIN TB43-0144.
5. MATERIAL ORDERED ON THIS DRAWING IS NOT INTENDED TO BE RESTRICTIVE. SUBSTITUTION OF EQUAL QUALITY MATERIAL MAY BE MADE EXCEPT FOR ITEMS MARKED GFE.
6. SLIGHT DEVIATIONS FROM DIMENSIONS SHOWN ARE PERMISSIBLE TO SUIT ACTUAL CONDITIONS FOUND ABOARD THE VESSEL.
7. COMPONENTS SHOWN BY SOLID HEAVY LINES ARE NEW AND ARE TO BE INSTALLED IN ACCORDANCE WITH THIS DRAWING. PHANTOM LINES INDICATE EXISTING COMPONENTS INSTALLED BY DRAWINGS REFERENCED AS NOTED.
8. THE EXISTING ENGINE FOUNDATIONS SHALL BE COMPLETELY REMOVED AS SHOWN BY CROSS-HATCHED AREA IN VIEW 7-A. GRIND FLUSH ANY PROTRUSIONS OR HIGH POINTS.
9. SEE DRAWING 13226E9460 FOR A MORE COMPLETE DESCRIPTION OF PORT AND STBD ENGINES.
10. ENGINES TO BE ADJUSTED VERTICALLY TO MATE WITH CENTERLINE OF PROPELLER SHAFTS BY USE OF 1/2-13 UNC JACKING BOLTS POSITIONED IN ENGINE SUPPORT BRACKETS. FILL SPACE WITH CASTING COMPOUND, FIND NO. 25. CASTING COMPOUND TO BE INSTALLED IN ACCORDANCE WITH MANUFACTURER'S INSTRUCTIONS.

REFERENCE DRAWINGS APPLICABLE TO HULL NUMBERS 8540 THRU 8560 AND 8580 THRU 8618		
NO.	DRAWING NO.	TITLE
1	145-4510915	BOTTOM PLATING
2	145-4510918	FRAMING SECTIONS
3	145-4510921	BULKHEAD AND TRANSOM DETAILS
4	145-4510922	LINES AND OFFSETS
5	13226E9460	LCM-B, MOD-1, SERVICE LIFE EXTENSION PROGRAM COMPONENTS LIST
6	13226E9472	LCM-B, MOD-1, PROPELLER SHAFT DETAILS

REFERENCE DRAWINGS APPLICABLE TO HULL NUMBERS 8520 THRU 8539		
NO.	DRAWING NO.	TITLE
1	145-2534201	BOTTOM PLATING
2	145-2534194	FRAMING SECTIONS
3	145-2534195	BULKHEAD AND TRANSOM DETAILS
4	145-2534185	LINES AND OFFSETS
5	13226E2256	LCM-B, MOD-1, SERVICE LIFE EXTENSION PROGRAM COMPONENTS LIST
6	13226E9472	LCM-B, MOD-1, PROPELLER SHAFT DETAILS



PLAN VIEW 7-A
SCALE NONE
EXISTING ENG FNDN REMOVAL
SEE NOTE 8



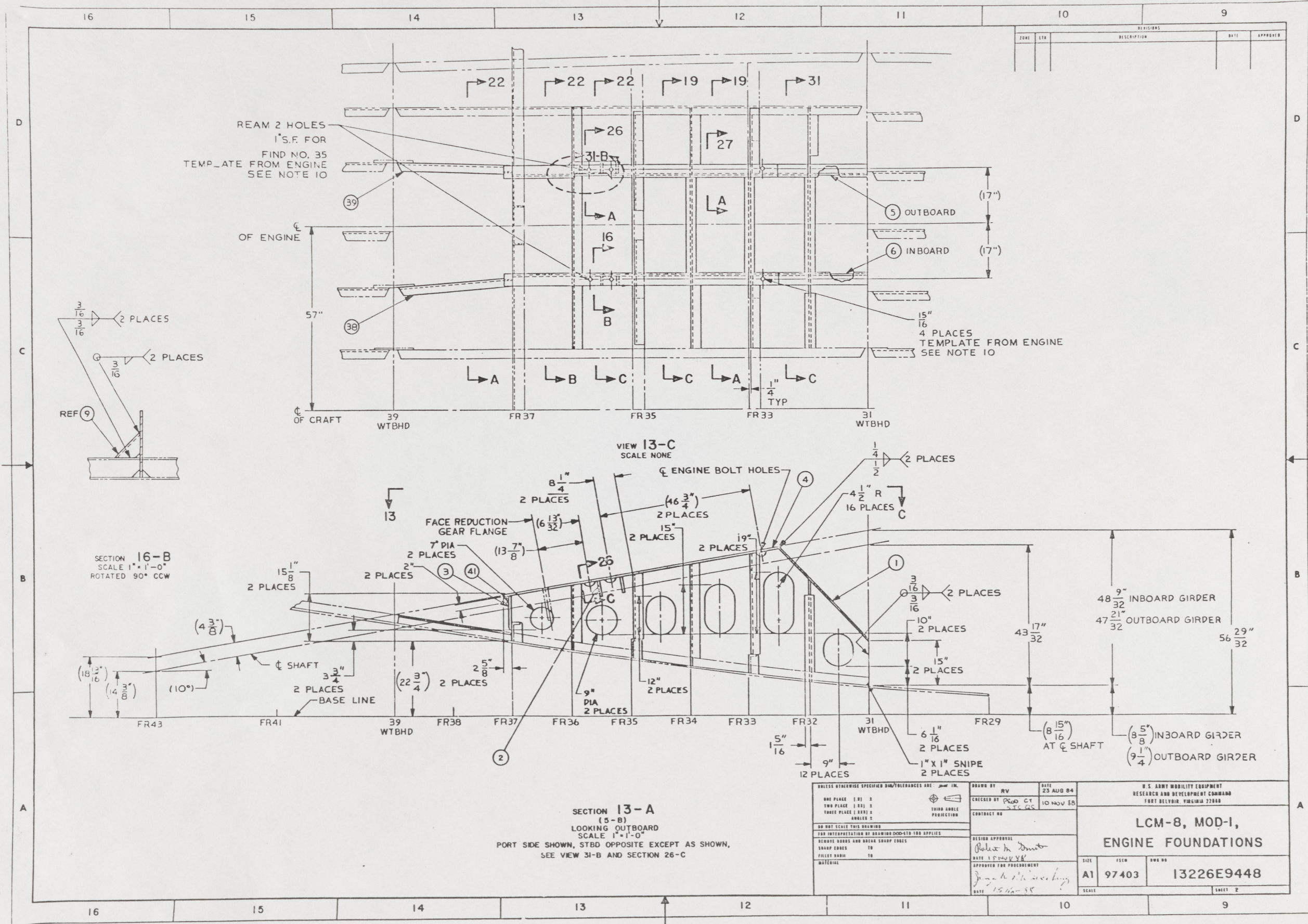
VIEW 5-B
KEY VIEW
SCALE NONE

THIS DRAWING APPLIES
TO HULL NUMBERS
8520 THROUGH 8560 AND
8580 THROUGH 8618 ONLY

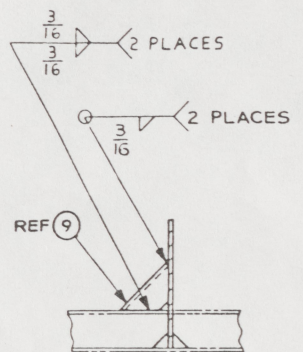
SHEETS				STATUS OF REVISIONS	
NO.	DATE	DESCRIPTION	DATE	APPROVED	
4					
3					
2					
1					

YARD	NO.	QTY	DESCRIPTION	UNIT	ASTM	MATERIAL
YARD 41		4	PLATE, 3/8" THK		ASTM A36	STEEL
YARD 40		2	BAR, 5/8" X 1" X 16 1/2"		ASTM A36	STEEL
YARD 39		2	ANGLE, 1/4" X 2 1/2" X 3" X 35 3/4"		ASTM A36	STEEL
YARD 38		2	ANGLE, 1/4" X 2 1/2" X 3" X 36"		ASTM A36	STEEL
YARD 37		2	F.B., 1/4" X 3" X 15 1/2"		ASTM A36	STEEL
GFE 36	72582	2	S.O. 8A11647A00 DIESEL ENGINE, 12V-71 MODEL 7122-7000 (DETROIT DIESEL)		COML	SEE NOTE 9
YARD 35	MS90725-240	4	SCREW, HEX HD, 1"-8 UNC-2A X 4 1/2" L			STEEL
YARD 34	MS35691-74	4	NUT, PLAIN, HEX, JAM, 1"-8 UNC-2B			STEEL
YARD 33	MS51067-30	4	NUT, PLAIN, HEX, 1"-8 UNC-2B			STEEL
YARD 32	MS27183-27	4	WASHER, FLAT, .062" ID X 2.00" OD X .134 THK			STEEL
YARD 31		8	ANGLE, 1/4" X 3" X 6" X AR L		ASTM A36	STEEL
YARD 30		4	PLATE, 3/8" X 4' X 5"		ASTM A36	STEEL
YARD 29	MS90725-217	8	SCREW, HEX HD, 7/8"-9 UNC-2A X 4" L			STEEL
YARD 28	MS35691-65	8	NUT, PLAIN, HEX, JAM, 7/8"-9 UNC-2B			STEEL
YARD 27	MS51067-27	8	NUT, PLAIN, HEX, 7/8"-9 UNC-2B			STEEL
YARD 26	MS27183-25	8	WASHER, FLAT, .038 ID X 1.75 OD X .134 THK			STEEL
YARD 25	20420	AR	CASTING COMPOUND (PHILADELPHIA RESINS CORP)		COML	EPOXY RESIN
YARD 24		2	ANGLE, 1/4" X 3" X 6" X 31" L		ASTM A36	STEEL
YARD 23		2	PLATE, 3/8" THK		ASTM A36	STEEL
YARD 22		2	PLATE, 3/8" THK		ASTM A36	STEEL
YARD 21		2	F.B., 1/4" X 3" X 33 3/4"		ASTM A36	STEEL
YARD 20		2	PLATE, 3/8" THK		ASTM A36	STEEL
YARD 19		2	PLATE, 3/8" THK		ASTM A36	STEEL
YARD 18		2	PLATE, 3/8" THK		ASTM A36	STEEL
YARD 17		2	PLATE, 3/8" THK		ASTM A36	STEEL
YARD 16		2	PLATE, 3/8" THK		ASTM A36	STEEL
YARD 15		2	PLATE, 3/8" THK		ASTM A36	STEEL
YARD 14		6	F.B., 1/4" X 3" X 42"		ASTM A36	STEEL
YARD 13		2	PLATE, 3/8" THK		ASTM A36	STEEL
YARD 12		2	PLATE, 3/8" THK		ASTM A36	STEEL
YARD 11		2	ANGLE, 1/4" X 3" X 3" X 31"		ASTM A36	STEEL
YARD 10		2	PLATE, 3/8" THK		ASTM A36	STEEL
YARD 9		4	PLATE, 3/8" THK		ASTM A36	STEEL
YARD 8		2	PLATE, 3/8" THK		ASTM A36	STEEL
YARD 7		2	PLATE, 3/8" THK		ASTM A36	STEEL
YARD 6		2	PLATE, 3/8" THK		ASTM A36	STEEL
YARD 5		2	PLATE, 3/8" THK		ASTM A36	STEEL
YARD 4		4	F.B., 5/8" X 4" X 6 FT-11"		ASTM A36	STEEL
YARD 3		4	F.B., 5/8" X 4" X 10"		ASTM A36	STEEL
YARD 2		4	PLATE, 3/8" THK		ASTM A36	STEEL
YARD 1		4	F.B., 5/8" X 4" X 39"		ASTM A36	STEEL

<p>UNLESS OTHERWISE SPECIFIED DIM/TOLERANCES ARE: .001 IN.</p> <p>ONE PLACE (.01) ±</p> <p>TWO PLACE (.001) ±</p> <p>THREE PLACE (.0001) ±</p> <p>FOUR PLACE (.00001) ±</p> <p>DO NOT SCALE THIS DRAWING</p> <p>FOR INTERPRETATION OF DIMENSIONS SEE 000018-100 APPLIES</p> <p>REMOVE BARRS AND BREAK SHARP EDGES</p> <p>SHARP EDGES --- 10 ---</p> <p>FILED EDGES --- 10 ---</p> <p>WELDING</p>	<p>DRAWN BY: RV</p> <p>DATE: 22 AUG 84</p> <p>DESIGNED BY: PLO GT</p> <p>DATE: 10 NOV 83</p> <p>CONTRACT NO:</p> <p>DESIGN APPROVAL: <i>[Signature]</i></p> <p>DATE: 17 MAR 84</p> <p>APPROVED FOR PROCUREMENT: <i>[Signature]</i></p> <p>DATE: 15 MAR 84</p>	<p>U.S. ARMY MOBILITY EQUIPMENT RESEARCH AND DEVELOPMENT COMMAND FORT BELVOIR, VIRGINIA 22060</p> <p>LCM-8, MOD-1, ENGINE FOUNDATIONS</p> <p>SIZE: A1 PFCM: 97403 DWA NO: 13226E9448</p> <p>SCALE AS NOTED SHEET 1 OF 4</p>
--	---	--



REAM 2 HOLES
1" S.F. FOR
FIND NO. 35
TEMPLATE FROM ENGINE
SEE NOTE 10



SECTION 16-B
SCALE 1" = 1'-0"
ROTATED 90° CCW

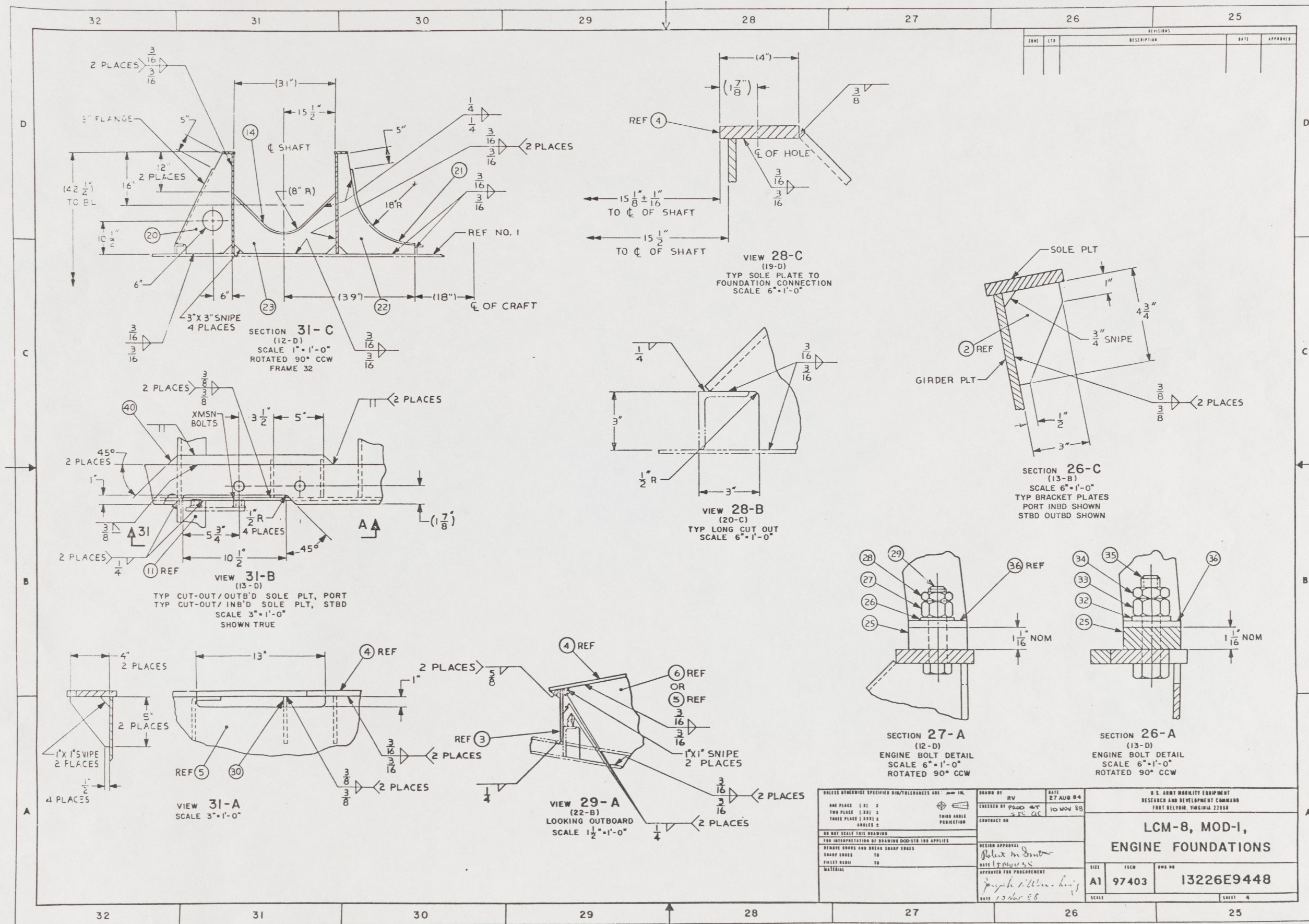
VIEW 13-C
SCALE NONE

SECTION 13-A
(S-B)
LOOKING OUTBOARD
SCALE 1" = 1'-0"
PORT SIDE SHOWN, STBD OPPOSITE EXCEPT AS SHOWN,
SEE VIEW 31-B AND SECTION 26-C

REVISIONS				
NO.	DATE	DESCRIPTION	BY	APP'D

<p>UNLESS OTHERWISE SPECIFIED DIM TOLERANCES ARE:</p> <p>ONE PLACE (.31) ±</p> <p>TWO PLACE (.031) ±</p> <p>THREE PLACE (.0031) ±</p> <p>FOUR PLACE (.00031) ±</p> <p>ANGLES ±</p> <p>DO NOT SCALE THIS DRAWING</p> <p>FOR INTERPRETATION OF DIMENSIONS CONSULT THE APPLICABLE</p> <p>STANDARD HANDS AND BREAK SHARP EDGES</p> <p>SHARP EDGES TO</p> <p>FILLET RADIUS TO</p> <p>MATERIAL</p>	<p>DRAWN BY: RV</p> <p>CHECKED BY: PWD CT, STS GS</p> <p>DATE: 23 AUG 84</p> <p>10 NOV 88</p> <p>CONTRACT NO.</p> <p>DESIGN APPROVAL: <i>[Signature]</i></p> <p>DATE: 15 NOV 88</p> <p>APPROVED FOR PROCUREMENT: <i>[Signature]</i></p> <p>DATE: 15 NOV 88</p>	<p>U.S. ARMY MOBILITY EQUIPMENT RESEARCH AND DEVELOPMENT COMMAND FORT BELVOIR, VIRGINIA 22060</p> <p>LCM-8, MOD-1, ENGINE FOUNDATIONS</p> <p>SHEET 2</p>
--	--	---

2



REVISIONS				
NO.	DATE	DESCRIPTION	BY	APP'D

UNLESS OTHERWISE SPECIFIED DIM/TOLERANCES ARE: \pm IN.		DRAWN BY: RV	DATE: 27 AUG 64	U.S. ARMY MOBILITY EQUIPMENT RESEARCH AND DEVELOPMENT COMMAND FORT BELVOIR, VIRGINIA 22060	
ONE PLACE (1.0)	±	CHECKED BY: PGOO/ST	10 NOV 68	LCM-8, MOD-1, ENGINE FOUNDATIONS	
TWO PLACE (1.00)	±	CONTRACT NO: 215 GIC			
THREE PLACE (1.000)	±	DESIGN APPROVAL: <i>John M. Dunt</i>		SIZE: A1	PAGE NO: 97403
FOUR PLACE (1.0000)	±	DATE: 15 NOV 68		APP'D FOR PRODUCTION: <i>Joseph A. Allen, Jr.</i>	
DO NOT SCALE THIS DRAWING					
FOR INTERPRETATION OF DRAWING DOD-STD 100 APPLIES					
REMOVE SHARP AND BREAK SHARP EDGES					
SHARP EDGES	16				
FAKES BASH	16				
MATERIAL					

4