

Fair and slightly colder on the north coast tonight; Friday partly cloudy.

ROOSEVELT ORDERS INQUIRY INTO TAX SYSTEMS

National Guardsmen Called Out In Tennessee Race Riot

SHELBYVILLE COURT HOUSE BURNED BY MOB

Two Men Die From Blast of Militia Guns As Mob Attempts to Release Prisoner Facing Trial For Assault on White Girl; Threat to Burn County Jail Not Carried Out

Shelbyville, Tenn., Dec. 20.—(AP)—Six hundred national guardsmen marched into town today while spectators looked on silently in sharp contrast to disorders 24 hours ago in which the courthouse was burned and two men killed in a racial outbreak.

The troops were ordered here by Governor Hill McAllister after a mob ran wild yesterday on the scene of a lynching, fighting to carry off a negro whose trial on a charge of attacking a young white girl was interrupted as the sullen, raging mob stormed the courthouse.

Asked if he would declare martial law, Adjutant-General J. H. Ballew replied:

"Nothing like that. We've got 600 men here and we are going to look around and see what the situation is before making any plans."

Nothing like that. We've got 600 men here and we are going to look around and see what the situation is before making any plans."

Four hours after the guardsmen's bullets had snapped the assault against the courthouse the building was burned to the ground at a loss estimated at \$150,000.

Threats still ran through the town today. Dr. James L. Morton, county health officer, said he was informed the mob intended to fire the Bedford County jail after offering a respite to let him remove the twenty odd prisoners. Dr. Morton said he took advantage of the offer.

The mob first set the hour of 1 o'clock this morning for the firing without the threat being carried out. The crowd partly dispersed was still in a mad mood and occasional shots were fired.

Four trucks of an original detachment of 111 national guardsmen who brought the mob's quarry here for trial yesterday were overturned and burned.

Convict Pittman Of Manslaughter

Wilson, N. C., Dec. 20.—Walter R. Pittman, charged with the murder of Frank Rose here last August, was found guilty of manslaughter Wednesday in Superior Court after an hour's deliberation. Pittman told the jury Tuesday that he had killed Rose in self-defense and denied all allegations of the State's witnesses.

Lawyers for both sides closed their arguments Tuesday night and Judge Devin charged the jury Wednesday morning. He reserved sentence which may be anywhere from four months to twenty years in State's Prison until Thursday.

Probe Rates Of Small Telephone Companies

Raleigh, N. C., Dec. 20.—(AP)—General data pertaining to telephone rates of more than 100 independent companies operating in North Carolina is being gathered by the State Utilities Commission and steps intended to bring rates in line with the new scale to go into effect January 1 for Southern Bell Telephone and Telegraph Company will be started immediately.

Stanley Winborne, State Utilities Commissioner, revealed today he is gathering all possible information from the 106 independent companies which serve about 70,000 subscribers. "The rates of smaller companies than the Southern Bell will be brought as nearly in line with the new Southern Bell rates as it is legally possible," Winborne said.

"We know that a number of these small companies are now operating at a loss with the books showing in the red for several years, and others making a bare existence have not been able to pay dividends on the money invested in them in years, and naturally we cannot sustain reductions in such cases.

"There are other companies though that have made good profits in recent years and these will be adjusted. We will investigate every independent company in detail before we take any action."

FIREMEN RUSH WORK ON TOYS

Over Two Hundred Gifts For Poor Children Being Prepared For Santa Claus

With over two hundred broken toys on hand, Greenville firemen were working frantically in their toy shop at the fire station today attempting to mend the toys in time for Santa Claus to present them to poor children of the city when he makes his annual nocturnal round next Monday night.

George Gardner, chief of the fire department, said this morning numbers of toys already had been repaired and repainted and that his men hoped to have the remainder in shape for distribution next Monday evening.

The toys will be turned over to the Salvation Army probably Saturday and workers of that organization will go over their list and check the names of those they desire Santa Claus to provide with Christmas cheer. The workers are also obtaining gifts of candy, apples and oranges from all available sources in an effort to make the holidays as pleasant as possible for the children of the indigent.

Eight men are on duty night and day at the firemen's toy shop, replacing broken parts of toys and then restoring their original hues. Both night and day shifts will be worked at full speed ahead until Saturday, the fire chief said, in an effort to complete all toys on hand.

Hope was expressed, however, that persons desiring to give to the cause would send in any such gifts, and an effort would be made to include them in the pack Santa Claus will hop from chimney to chimney with Christmas Eve night.

Three Treated For The Rabies

Goldsboro, N. C., Dec. 20.—Mr. and Mrs. B. E. Grant and their baby, of Goldsboro, Route 3, and Wilbur Kornegay, seven-year-old colored boy, of Route 4, began taking Pasteur treatment in Goldsboro this week, having received word from Raleigh that Mr. Grant's bird dog whose head has been examined there was affected with rabies.

THE NATIONAL WHIRLIGIG

News Behind The News.

Washington By GEORGE DURNO

Publisher: Huey Long Louisiana's flamboyant Kingfish, is debating the idea of setting himself up as a daily newspaper in New Orleans. It would be a personal organ through which to air his views on national and state politics. Huey figures all the big papers in Louisiana are against him so he might as well establish his own sounding board.

Senator Long already has "punished" the big Louisiana dailies for fight his dictatorial reign. He had the Legislature slap a 2 per cent (Continued on page four)

NEW BOMBINGS SHAKE HAVANA DURING NIGHT

Explosive Explodes At Entrance of Headquarters of Mayor of Havana

Havana, Dec. 20.—(AP)—A bomb exploded early today at the entrance to headquarters of a political party headed by Miguel Marianno Gomez, mayor of Havana.

Nearby buildings in the downtown section were shaken by the blast. Apparently no one was injured by the blast which was one of a series of bombings during the night.

One destroyed a building in the Vibro section and wounded one person. Another exploded at the home of the vice-president of the Havana Stock Exchange, inflicting heavy damage.

The stock exchange official had recently protested to the government foreign correspondents were sending out baseless stories which were depressing the Cuban market. Two unusually large bombs were set off in the Vedado residential section before midnight.

While Havana's nerves were kept on edge by the bombs, Colonel Fulencio Batista, commander in chief of the army, conferred with members of the cabinet at Mendieta's country home, 20 miles from Havana.

HOLD MAN IN FATAL CRASH

Jesse Jones Arrested As Suspect in Auto Wreck in Which W. J. Hardee Died

Kinston, N. C., Dec. 20.—Suspecting he was responsible for an automobile accident near here which claimed two lives last week, police today held Jesse Jones, 26. They believed he was driver of a car owned by Whit J. Hardee, of Greenville, which overturned on a notorious curve at Grainger, killing Hardee and fatally injuring Clay Wilson, about 50, Greenville. They were ready to charge him with manslaughter.

Police said Jones was reported to have served two prison terms. Filling station men told investigators they saw him at the wheel of the car before the accident. A resident of Grainger who was first to reach the wrecked car said one of the occupants disappeared when he went for help to lift it off Hardee's body.

A filling station man said Hardee had twenty-one \$20 bills when he paid for gasoline shortly before the accident. The undertaker who handled his body said he found only nine \$20 bills. Officers said at least two of the men had been drinking. Jones' home is in Pitt County.

Mrs. Charlie Hardee And Child Painfully Burned at Home Near Greenville

Mrs. Charlie Hardee and child, who reside on the Washington road about five miles from Greenville, were reported as recovering today from burns they received when the child's clothing caught fire while standing too near a stove and the mother attempted to extinguish the blaze.

Mrs. Hardee was said to have suffered severe burns about the hands and the child was burned about the hands and face. They were rushed to Greenville for medical aid, but their injuries were not described as serious.

Masked Men Get \$48,000 in Holdup At Philadelphia

Philadelphia, Pa. Dec. 20.—(AP)—Five masked men held up the transportation and supplies building of the Philadelphia Electric Company today as employees were being paid off and escaped with a pouch estimated to contain between \$40,000 and \$48,000 in cash.

The robbers beat the watchman at the building, Earl Smith when he sought to prevent the hold-up.

Four of the bandits staged the hold-up on the floor above the street level at the building at 23rd and Market Streets, while the fifth stayed at the wheel of the robber car in front of the building.

The money was being used to cash checks employees were receiving nearby.

SHIP SENDS OUT SOS NEAR FIRE ISLAND

Steamer Severance Loses Rudder; Coast Guard Cutter Sent To Her Assistance

New York, Dec. 20.—(AP)—The coast guard has picked up an SOS from the steamer Severance which stated the Severance had lost her rudder eighteen miles south of Fire Island.

The coast guard immediately dispatched a cutter to the assistance of the Severance, and a short time later radio and marine radio picked up a message saying the coast guard boat was standing by.

ANNUAL RUSH TO STORES ON AT FULL BLAST

Christmas Shoppers Making Final Effort To Provide Themselves With Gifts

With only three shopping days to go before the coming of Santa Claus, Greenville and Pitt County people turned their attention today to the final rush always preceding the visit of the cherry old gentleman.

Rain yesterday held up the annual rush to the business district, but with fair weather today, although cold, shoppers were expected to visit the business area in great numbers and provide themselves with gifts for relatives and friends.

The stock of Christmas gifts is greater this year than it has been in many seasons and shoppers have had little difficulty obtaining the things desired. Stores of all kinds have stocked heavily with Christmas gifts, and indications today pointed to the majority of them being virtually cleaned out by next Monday night when St. Nicholas is scheduled to make his annual call on the community.

Streets and business houses along with scores of stores are decorated in keeping with the significance of the occasion, and addition, decorations found their way to various homes with the Yuletide season only four days away.

Santa Claus arrived in the city one pair of mules Monday night, and has done much toward increasing interest. The Patron Saint of million of children in all parts of the world will remain in the business district until Monday evening, when he will go back to his reindeers and fly through the skies to children who have been good all through the year.

St. Nicholas has paraded up and down the streets a number of times since his arrival. He has thrilled the hearts of hundreds of children by stopping along the streets in response to their hearty greetings, assuring them he would be along to see them Christmas Eve night.

The white-whiskered old gentleman will appear in various stores of the city from day to day, attempting to do his part toward boosting sales and providing everybody with gifts.

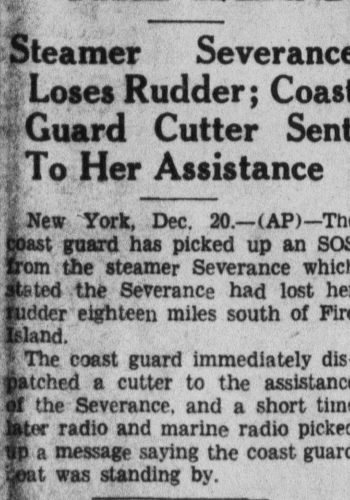
Business in a number of stores has been very brisk for the last several days, and with the Yuletide four days off, the rush from now on is expected to be the most pronounced in years, especially in view of the fact that there is more money in the community than any year in the past ten.

Persons who have not put up their decorations were being urged today to do so and help the entire city present an enchanting appearance when Santa Claus swishes across the skies for his annual visit.

Patrolmen said Ballangia was driving at a high rate of speed, and that Smith drove out of a side road without stopping.

Ballangia's machine was said to have been totally demolished by the force of the impact and Smith's car was badly damaged.

Georgia Girl May Quit Seventh Mate



Published reports in the New York Daily News said Mrs. Virginia Overshiner Cogswell, known as "The Georgia Peach," was preparing to divorce Arthur J. Cogswell, her seventh husband. The 26-year-old former Atlantian was quoted as saying she never would be married again. (Associated Press Photo)

TWO ARRESTED DRIVING DRUNK

Greene County Men Scheduled to Face Hearing After Wrecking Car

Robert Bradley and Roy Letchworth, of Greene county, were to receive preliminary hearing here this afternoon on charges of driving an automobile while drunk.

They were arrested by highway officers about a mile north of Greenville last night after allegedly wrecking their car in a ditch.

Officers said both men were so drunk they hardly knew what they were doing and were brought here and confined in the county jail to sober up in preparation for trial this morning. Each man was charged with driving the car, and one was trying to help the other, it was said, when officers arrived on the scene and took them into custody.

They were scheduled to face trial sometime this afternoon in a magistrate's court, and probably will be bound over to the next sitting of county court set for January 1.

TWO HELD IN CAR COLLISION

Hugh Ballangia and James Smith Ordered to Court After Crash in Chicod

Two men were held for County Court here today charged with reckless driving after an automobile collision in Chicod Township this morning shortly after 8 o'clock.

Hugh Ballangia, of Arapahoe, and James Smith, of Pitt County, were ordered to appear at the January 1 sitting of County Court after they were taken into custody by highway patrolmen.

Ballangia was reported to have been painfully injured about the face when his car collided with Smith's machine on the intersection at Chicod school.

Patrolmen said Ballangia was driving at a high rate of speed, and that Smith drove out of a side road without stopping.

Ballangia's machine was said to have been totally demolished by the force of the impact and Smith's car was badly damaged.

Denies Charge of Negro Servant

Durham, N. C., Dec. 20.—J. L. Morehead, prominent Durham attorney, in answer to suit filed by Thomas Strowd, aged negro servant in his household for the past twenty-five years, who claimed fraud and manipulation in the handling of his building and loan stock, today discharged any interest in the negro's business and said that he acted only as a friendly adviser to him.

National Confab On Taxation Seen For Next Summer



Washington, Dec. 20.—(AP)—The District of Columbia Supreme Court ruled today that Senator Huey Long of Louisiana must face trial on the \$500,000 libel suit filed against him by Samuel T. Ansell.

Justice Peyton Gordon who delivered the opinion, rejected Long's claim that his Senate position entitled him to immunity from the libel action.

Ansell, a former judge advocate general of the army, was counsel for the Senate committee which opposed the election of Senator John Overton of Louisiana.

Attorneys said the decision meant that Ansell's suit against Long would go on trial soon unless the senator filed an appeal.

Smithfield, Dec. 20.—(AP)—Josephine Smith, 15-year-old Johnston county girl, testified today at the trial of nine persons charged with kidnaping three young Johnston county girls and taking them to New York for immoral purposes, that she was forced to go to New York with Mrs. Sarah Beasley Krane.

The young woman gave virtually the same story as that already related by Ogolia Barbour, 15, another of the alleged kidnap victims, and their story differed little from that of Camelia Price, 17.

Each of the girls related in detail the lives they alleged they were forced to lead in New York before police raided their apartment, to which they said they were taken. They testified they were put on a train in Raleigh against their wishes and forced to enter a life of immorality. All said they were taken to New York by Mrs. Krane and threatened with death if they made an outcry.

The state indicated its evidence would be complete when Josephine (Continued on Page Six)

C. E. ALLIGOOD DIES IN WRECK

Local Man Killed When Truck He is Riding on is Hit by Train

Clyde E. Alligood, 30, of Greenville, was fatally injured today when the Taft Furniture Company truck which he was driving, was struck by a Norfolk Southern passenger train, on the Greenville-Washington highway, a few miles from Grimesland.

The truck was hit by the same train at identically the same crossing where three Greenville young men riding on a Ricks Transfer Truck met death a month ago.

Alligood was rushed to the Washington Hospital for medical aid, but died shortly afterwards.

Full details of the accident had not been received here this afternoon, but it was said that Alligood was riding alone when the accident occurred.

Alligood lived in Greenville and is survived by a wife and two children.

FEDERAL TAX SYSTEM WILL BE EXAMINED

Washington, D. C., Dec. 20.—(AP)—In a move to prevent the overlapping of taxes, President Roosevelt today directed the Treasury to investigate Federal, State and municipal tax systems.

A national conference on taxation next summer may result from the inquiry.

Secretary Morgenthau disclosed the plan today and shortly will name a staff to make the inquiry.

"The study will look forward to zones of taxation and will eliminate overlapping," Morgenthau said.

"It will be a long range study with the possibility the President may call a conference next summer of the various agencies involved in taxation."

"It will include the question of whom collects taxes the most economically. It might involve the question of Federal collections of all income taxes."

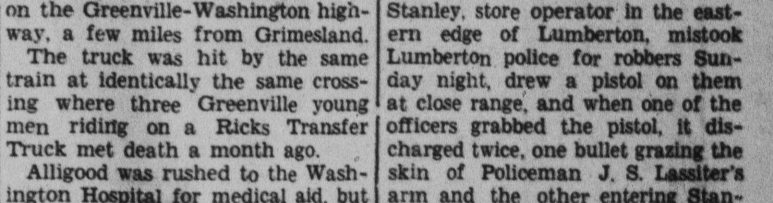
Morgenthau said the gasoline tax was an excellent example of levy employed by both Federal and State, and sometimes local governments. Investigators will look into the question of whether in such a case the Federal government would make all collections and then make distributions to States and local governments.

The question of tax exempt securities also is receiving attention along with duplication in the assessment of liquor taxes. The treasury for some years has favored a constitutional amendment to eliminate the exemption from taxes of some Federal and State issues.

Mistake Cops For Robbers

Lumberton, N. C., Dec. 20.—J. H. Stanley, store operator in the eastern edge of Lumberton, mistook Lumberton police for robbers Sunday night, drew a pistol on them at close range, and when one of the officers grabbed the pistol, it discharged twice, one bullet grazing the skin of Policeman J. S. Lassiter's arm and the other entering Stanley's leg, causing a flesh wound, with which he is a patient in Thompson Memorial Hospital. Officers were called to the store by someone who said it was being robbed. Stanley also had received the alarm and had gone to the store armed with a pistol. With it he attempted to attack the officers.

DRIVE CAREFULLY TODAY



Over-inflated tires make riding bumpy, tiresome and uncomfortable. It is important to have the right pressure in all four tires. Check the pressure today, and while you are doing it remember that you may save yourself a frigid job some day by inflating the spare tire. Over-inflating increases the possibilities for blowouts and weak tires.

3 Shopping days to Christmas



Sales of postage stamps in Oregon during 1934 increased 17.67 per cent during October over September.

# 250 PACKAGES FREE Friday Night 8 o'Clock

We will give away 250 packages of Fireworks Friday night. Come and get yours. We have a big assortment of Fireworks—in sizes to meet every requirement.

## Greenville Grocery Co.

Dickinson Ave. — 4 doors from 5 Points

# CANDY



Candies --- Cigars --- Cigarettes  
Toilet Articles --- Pen and Pencils  
Will Make An Ideal Gift  
Subscription To The News and Observer  
**Pitt Drug Co.**  
Phone 75



## Caught

By MARY GRAHAM BONNER  
Santa had made a great many dolls' houses but there was one that Top Notch particularly admired, for in one of the rooms was really quite a good-sized mirror.



"I can look at myself and get a good view of my beauty," cackled Top Notch to himself, and he stooped down a little and walked in the front door of the doll's house. Then he stooped down again and walked into the drawing-room of the doll's house. "This is certainly a beautiful house," said Top Notch admiringly, "but soon I will behold real beauty."

He perched himself on the floor and gazed into the mirror. His white feathers were indeed lovely, the red comb on his head was bright and magnificent. And he didn't have to stoop down in this room as he had had to do getting through the doors of the doll's house. He stood up straight and strutted back and forth before the mirror.

"I can think of no better way in which to enjoy myself," he said happily. But after a while it began to grow dark and Top Notch's rooster appetite was growing.

"Supper is now in order for a handsome rooster," he said, but as he stooped to get out of the door of the doll's house he got caught. He had not bent down enough and he had spread out his wings too far. Now he could neither really stand up, nor sit down.

All night long Top Notch stayed in that most uncomfortable position. He couldn't sleep although he was so tired.

"Cock-a-doodle-do! Caught!" he crowed.

Tomorrow—"Presents"

## SHORTER COLDS

SEE THE NEW FORD  
The new 1935 Ford car has more value than any car Mr. Ford has ever built. You will be astounded when you see the car and learn the price! John Flanagan Buggy Company.

# I did not kill Osborne

By VICTOR BRIDGES

SYNOPSIS: Nicholas Trench just has rescued Molly O'Brien from the hide-out of an unscrupulous gang which believes she can tell where a valuable formula belonging to her is hidden. But Molly does not know, for the formula has been stolen. Nick, with Jerry Mordant, plans to help her find it. Molly has been taken to Jerry's flat, where she, Nick, and Jimmy Fox, a page boy protégé of Nick's, are to await the return of Jerry himself.

Chapter 31  
INTOXICATING MOMENT  
I STUMBLED down the hall, and deposited my burden on the bed in Jerry's room. Then I sat down and wiped my forehead.

"I'm sorry I'm so heavy, Nick," Molly smiled up at me faintly. "It must be all the good food I've had lately."

"You lie quite still," I said. "If you feel well enough you can undress later, after you've had some tea." I looked down into her upturned face which was almost as white as the pillow. "How did you get that cut on your cheek?" I asked.

"It was Orloff's ring," she whispered.



MOVED by his plea, I plunged into a hasty recital of our adventure. One incident, which was quite obviously irrelevant, I omitted altogether but, for the rest, I gave him a brief and faithful report of everything that had happened, so far at least as I was able to call it to mind. When I had finished he sat gazing at me in a kind of rueful silence.

"Blast it!" he observed. "The fun always starts directly I go away." He got up and, pacing the room, tossed the stump of his cigarette into the fireplace. "Was Molly hurt at all?" he demanded.

"Nothing really serious. She'd got a foul headache last night, of course, and there's a nasty cut just below her eye, which she told me Orloff did with his ring."

Jerry swore softly. "The dirty hound! When I get my hands on him I'll break his neck."

"I'd arranged to do that," I said. "We shall have to toss for it."

"Fancy their having the nerve to stage a ramp like that!" he muttered. "This confounded invention must be worth a pot of money, or they'd never have taken the risk." He paused. "I wonder what the exact idea was."

"Pretty obvious," I returned. "They meant to keep her as a hostage until we agreed to let them have the formula. We should probably have got a telephone message today threatening to cut her throat. That sort of thing would be right up Dimitri's street."

"Has Molly told you what they actually said?"

"I didn't try to question her; she was all in. I thought the soundest plan was to get her straight to bed and wait till she'd had a good night's rest."

He nodded. "Quite intelligent for you, Nick. In fact..."

There was a tap at the door, and Dawson appeared on the threshold. "Beg pardon, sir, but Miss O'Brien has just rung her bell. I told her you were back and that you and Mr. Trench would be having breakfast in a few minutes. She says she is feeling better, sir, and will join you in the dining-room."

"That's fine," said Jerry. He turned to me. "While you're shaving and dressing, I'll push along and have a chat with Jimmy."

(Copyright, 1934, Penn Publishing Co.)  
Molly's Story, Tomorrow, Tells a Different Light on Matters.

fore noon and retiring, she told her son, Robert, that she had taken the poison. The other members of the family were called to her bedside as she died. Coroner A. S. Campbell said death resulted from the effects of the poison.

According to one of her children Mrs. Broadwell spent the earlier part of the morning writing a letter. She sold the son to leave her alone. In her letter, she listed the various Christmas gifts she had purchased for her six children.

## ASTHMA WAS CHOKING HER!

Got Quick Relief—still fine after 17 YEARS  
Dec. 8, 1916—"I had asthma for 17 years. I tried everything but grew so weak I could hardly walk. After taking Nacor, I could do my housework. That was 8 years ago. I am still feeling fine, with no signs of asthma."—Mrs. Mary Bean, 33, Nashua, Iowa, July 31, 1933—"I continue in good health and am still praising Nacor."—Mrs. Bean. Don't let asthma or bronchial cough rob you of strength and happiness. For quick, safe, blessed relief, ask your druggist for a bottle of Nacor in capsule form—Nacor KAPS.

Nacor KAPS  
For ASTHMA and Bronchial Cough  
NACOR MEDICINE CO., INDIANAPOLIS, IND.  
at PITT DRUG CO., Phone 75 and other good druggists.

# NOTICE

Believing it would be a time liable to cause our customers a minimum of inconvenience we have capitulated to the Christmas spirit and decided to be closed to all business December 25 and 26, so that our employees at this most acceptable time may have a liberal holiday. We hope our customers will join us gladly in affording this respite to our grateful employees.

- CAROLINA DRY CLEANERS
- CASCADE LAUNDRY
- CRYSTAL LAUNDRY
- EUREKA LAUNDRY
- JACKSON'S SUITORIUM
- RAINBOW CLEANERS
- ROCK'S, CLEANER



# SANTA CLAUS

WILL BE IN OUR STORE FRIDAY  
Dec. 21st. 2 to 4 P. M.

We want all the children in Greenville and Pitt County to come and bring Mother and Dad. Tell Old Santa what you want for Christmas. If Old Santa does not have what you want he will certainly find it at White's. Our Big Stock of Toys, Dolls and Christmas Goods is more complete than ever.

# White's Stores

Incorporated

## Of Course! SHIRTS!

It's the one gift you can't go wrong on! You know that he can always use another shirt. And you know that he'll be pleased with

### Eagle SHIRTS

\$1.65 and \$1.95

Neckwear To Match

## QUALITY CLOTHESHOP

322 Evans St.

## Local Men Will Build Leaf House At Kinston, N. C.

Kinston, N. C., Dec. 20.—R. V. Keel and W. Z. Morton, of Greenville, will build a large tobacco warehouse in the northeastern corner of this city, it was announced today. The house will be operated by Keel and H. H. Morton, brother of W. Z. Morton.

The building will contain 70,000 square feet of floor space, making it one of the largest in the city. It is the fourth new house pro-

## Despondent Woman Takes Own Life

Durham, Dec. 20.—Leaving a note saying that everything had become "dull and blue" to her, Mrs. Katie Broadwell, 49, wife of R. C. Broadwell, Hope Valley road resident, committed suicide with poison at her home yesterday afternoon. She took the poison shortly be-

# Social and Personal

Miss Ada James and Charles James have moved from Fifth Street to Library Street, in Chatham Circle.

Miss Mary Frances Whitehurst arrived today from Roanoke Rapids where she is teaching, to spend the holidays with her parents, Mr. and Mrs. N. H. Whitehurst.

Mrs. W. O. Korman of Washington, D. C., is visiting her parents, Mr. and Mrs. N. T. Stokes, near Greenville.

Billy Morton is at home from Oak Ridge for the Christmas holidays.

V. C. Fleming, Jr., is at home from Rome, Ga., to spend the holidays with his parents, Mr. and Mrs. V. C. Fleming.

Mr. and Mrs. B. L. Scarborough of Rutherfordton, are visiting their parents, Mr. and Mrs. N. W. Jackson.

Mrs. Walter Patrick, Miss Lillian Abee, little Miss Mary Lee Abee and Carl Abee, Jr., are spending today in Rocky Mount.

Mrs. H. C. Sugg, Mrs. Marvin Sugg, Mrs. Archie Sugg, Misses Marjorie and Elizabeth Sugg spent yesterday in Rocky Mount.

Ray Moore is at home from State College, Raleigh, to spend the holidays with his mother, Mrs. Cammie Moore.

Jack Kilgo, Jr., is at home from Baylor School for Boys in Chattanooga, Tenn., to spend the holidays with his parents, Mr. and Mrs. J. L. Kilgo.

Marvin Sugg has returned from Detroit, Michigan, to spend the holidays. After January 1st he will make his home in Charleston, S. C.

Miss Louise Tadlock is at home from Greensboro to spend the holidays with her parents, Mr. and Mrs. A. C. Tadlock.

Frank Park, Jr., is at home from Oak Ridge to spend the holidays with his parents, Mr. and Mrs. F. M. Park.

Return From Wedding Trip. Mr. and Mrs. Richard W. Gorman have returned from their wedding trip and are making their home with Mrs. J. N. Gorman, 309 West Fourth Street.

Wanted: Tricycle. Anyone who has a tricycle they would like to give to a little four-year-old boy, please call phone 342.

Leaves For Henderson. Mrs. L. H. Smith will leave tonight for Henderson to attend the funeral of her brother-in-law, H. H. Harper.

Pot Plants. for Christmas makes the ideal gift. Greenville Floral Co., Cotanch St. (Adv.) 18-5t

Gift To Library. The Junior Woman's Club recently gave \$32.85 to Sheppard Memorial Library requesting that it be used to buy books for small children. Club members who were teachers in the primary grades and mothers with small children in the homes had found that this was a special library need. The children are enjoying these attractive books for their Christmas reading. Some of them are: Fairy Circus, Lost Merry-go-round, Spanish Twins, Do You Know? Peter Swiss, Wee Ann, Sunbonnet Babies, Overall Boys, Now We Are Six, Donkey John, Art Stories, Health Stories, Science Stories, Toy Airplane, Midget and Bridget.

Christmas Wreaths for the grave of your loved one. Make your selection early. Greenville Floral Co., Cotanch St. (Adv.) 18-5t

A Letter To Santa Claus. 114 13th St., Greenville, Dec. 19, 1934.

Dear Santa: I am a little girl 8 years old and in the third grade. Let me tell you what I want for Christmas. I want a doll with long curls, eyelashes and will go to sleep, a tea set, a big ball, a doll blanket, and please remember I like candy, all kinds of fruits and nuts. Love, Hazel Marie Harris.

White Christmas Program. A White Christmas program will be presented at Immanuel Baptist Church next Sunday evening at 7:30 o'clock. Music for the service will be in charge of the choir under direction of Mrs. Katherine Thomas. The pageant to be presented will be directed by Mrs. E. L. Henderson.

The public is cordially invited to attend. Gifts will be collected for the benefit of Baptist orphan children.

We Telegraph Flowers! A simple and inexpensive way to send a gift to any part of the civilized world. Simply give us your order. Members of the Florists' Telegraph Association are under bond to fill all orders exactly as they are given. Greenville Floral Co. (Adv.) 18-5t

WE GUARANTEE JEWELRY REPAIRING WATCH REPAIRING—Engraving—Reasonable Price LAUTARES'

## Social Calendar

**THURSDAY**  
8:30 p. m.—The Woman's Council of the Christian Church will meet for supper.

7:30 p. m.—The choir of Jarvis Memorial Methodist Church will meet.

7:30 p. m.—The "B" Branch of the Woman's Auxiliary of St. Paul's Episcopal Church will meet.

7:30 p. m.—The Young People's Choir of Memorial Baptist Church will meet for rehearsal.

**FRIDAY**  
5:00 p. m.—Mrs. W. H. Tolson will present her piano pupils in a recital in the auditorium of Sheppard Memorial Library.

6:30 p. m.—The Kiwanis Club will meet in the Woman's Club.

7:30 p. m.—The Boy Scouts will meet in the Christian Church.

8:00 p. m.—Christmas Festival, Austin Auditorium, East Carolina Teachers College.

Christmas Festival Friday Evening.

Final dress rehearsal for the Christmas Festival will be held this evening at 7:30 in Austin auditorium. Preparations are almost complete and if the members of the Choral Club are present in full force the few remaining technical difficulties in regard to the music can be easily straightened out.

"This Festival is really an ambitious undertaking and the hard work and patience which have been displayed during the rehearsal period will be rewarded in having a production which is really worthwhile and which can approximate professional standards," said Miss Dirmberger.

Members of the junior choir who have not previously attended the rehearsals may still have a part in the Festival if they report tonight in Austin Auditorium at the college. All who have been attending the practices are urged to come this evening, report to their respective dressing rooms, and be in costume by 7:15.

Many young children have important parts in the Christmas Festival which will be given admission free Friday evening at eight o'clock in Austin Auditorium. Little Theodell Nichols and Ed Jolly McLawhorn appear in scene one disclosing a Greenville home Christmas Eve, 1934. Miss Jane Hadley and W. A. Ryan are cast as their mother and father, while Caroline Hamric and

## My Beauty Hint

By KAREN MORLEY (Screen Actress)  
It's smart now to put the nail enamel over the "moon" and tip too.



## Christmas Flowers

SAY "MERRY CHRISTMAS"

To your friends with flowers this year. They speak a language of gladness, joy and good will.

Come in and see our Christmas display.

GREENVILLE FLORAL CO. Cotanch Street Phone 443

## THRILLS-A-PLENTY!



There are thrills aplenty in Paramount's "Menace" featuring Gertrude Michael and Paul Cavanagh, now at the State Theatre. Ralph Murphy directed this exciting film which deals with the adventures of three innocent people fleeing the vengeance of a madman.

Billy Tolson portray the older brother and sister.

Miss Hadley and Mr. Ryan also appear in the following scene, showing Christmas preparations during the "gay nineties." They are then a young couple, and will be assisted by Miss Agnes Wadlington and Miss Jane Hall, Miss Sybil Clark and others. This scene will feature a choir practice with Mr. Allen directing and Mrs. Tyson at the old fashioned organ.

Ione Hooker Bradsher and Jane Scoville will take the part of the Thorpe youngsters in scene three, "The Fabulous Forties," supported by Mrs. C. C. Hilton, Miss Elizabeth Madrin, Rev. Worth Wicker and other members of the Little Theatre Guild. Billy Combs, Kenneth Henderson and William Burke, playing the blackface, will be seen as slave boys of plantation days.

Again in the final scene, members of the youngest generation will be the featured players. Mary Grantham Hales, J. B. Joyner and Leo Burke all have responsible roles as children in an early pioneer family in a scene which goes back to Christmas Eve in North Carolina in 1740. Mrs. Vance Perkins, Miss Verda Wilson, Dr. G. R. Combs, Capt. M. L. Stafford and Fred Potter also appear in this scene which in many ways will be the most impressive portion of the Festival.

The children's choir under the direction of P. S. Allen will sing the following songs: "Here We Come a Wassailing," "Jingle Bells," "Deck the Halls," "God Rest You Merry Gentlemen," and will join with the

DOLL BASSINETS Playthings for children—and the most beautiful Dolls in Greenville! See them! THE VANITIE BOXE

## This Christmas GIVE A NEW PHILCO

MAKE this a Christmas that will be long remembered — with a PHILCO, the world's largest selling radio! Come in today — make your selection while our stock is still complete!

THE NEW 1935 PHILCO 29X \$75.00

Foreign reception GUARANTEED with this beautiful Inclined Sounding Board Model! Plus your favorite American programs. Latest features give outstanding performance and superb tone! New hand-rubbed cabinet! A spectacular value!

49 NEW 1935 PHILCOS from \$20. upwards

NEW PHILCO 66B \$39.50

What a value! World-wide reception at a sensationally low price! Amazing performance and true PHILCO tone. An ideal present. See and hear it—today!

Special Holiday Terms

Liberal Trade-In-Allowance

Carolina Kelvinator Co. Cor. 3rd and Cotanche

adult members of the Choral Club of the American Car and Foundry Company, were on the train today.

The Choral Club which is jointly responsible with the Little Theatre Guild for this production will sing the Brahms lullaby "Good King Wenceslas," "The First Noel," "John Peel," and "Christmas Comes But Once a Year." This last is an adaptation from an old Coonah Chant which was used by the negroes on the plantations around Greenville during the lighting of the Christmas "back log." Mrs. Herbert Waldrop will sing the solo part in "Cantique de Noel." The audience is requested to join in during the singing of "Come All Ye Faithful," "Joy To The World" will be used as the recessional. The musical arrangements of this Festival are in charge of Mrs. Charles A. White. The general production is under the direction of Miss Mary Dirmberger, special FERA worker in community drama, and has been written and assembled by the members of Greenville's Little Theatre Guild.

## Norfolk-Southern Makes Test Run of Streamlined Bus

Shortly before two o'clock today the new streamlined motor bus which the Norfolk & Southern Railroad plans to put in operation on several of its line January 6, arrived in Greenville and spent a short time before going to Raleigh.

The bus is making a test run from Norfolk to Raleigh, it was stated, and will return here in a few days for a demonstration and more complete inspection by the citizenship.

The car is a motorized affair, containing all the conveniences of the new mode of transportation adopted by numbers of railroads of the country, and was a source of much interest during the short time it spent here at the local depot.

The new bus represents a revolutionary departure from the general type of rail transportation and is fashioned after the ultra-modern trains now in operation in other sections of the country.

One of the cars will be placed in operation between Norfolk and Raleigh January 6 and at other points the same time.

J. S. Cox, assistant superintendent; L. B. Wickersham, superintendent of Motive power, and an expert

## EXCEPTIONAL USED CAR VALUES

- 1932 Pontiac Coupe
  - 1931 Ford Sedan
  - 1930 Chevrolet Coach
  - 1930 Buick Coupe
  - 1930 Ford Sedan
  - 1929 Olds Coupe
  - 1928 Ford Sedan
  - 1928 Chevrolet Sedan
  - 1927 Oldsmobile Sedan
- See Us—Save Money  
PITT OLDSMOBILE CO., Inc.  
Near A. C. L. Depot

## Shows 'Kerchief Presented Him Christmas, 1887

William Size, local tailor, displayed here today a silk bandana handkerchief which his father presented him on Christmas 47 years ago.

The handkerchief has been placed on display in the Daily Reflector office and may be seen by interested persons.

Mr. Size said the handkerchief

## Don't Get Up Nights Use Juniper Oil, Buchu Leaves, Etc.

Flush out excess acids and waste matter. Get rid of bladder irritation that causes waking up, frequent desire, scanty flow, burning and backache. Make this 25c test. Get Juniper oil, buchu leaves, etc., in little green tablets called Bukets, the bladder laxative. In four days if not pleased your druggist will return your 25c. Pitt Drug Co.—(Adv.)

**SAVE MONEY**  
By Buying That  
**DIAMOND OR WATCH**  
From  
**J. J. STAUFFER**  
Diamonds and Watches  
Exclusively  
Opposite Proctor Hotel

They're Loud --- Specially Priced  
SEE OUR DISPLAY

## Fireworks

LOCATED DAL COX STATIONS  
Foot Tar River Bridge  
Plenty Parking Space

## A PACKAGE FOR EVERYONE

Whitman's Christmas Candy..... 25c to \$7.50  
COMPLETE LINE OF CLAPP'S BABY FOODS  
See our complete line of Christmas Gifts—  
Evening in Paris, Coty, Yardley, Houbigant Sets  
ask for demonstration of  
SCHICK DRY SHAVER—ELECTRIC RAZOR  
CHAS. HORNE, CUT RATE DRUGGIST  
We Deliver Opposite Proctor Hotel Phone 50

## FOR HER CHRISTMAS

Mixes, Mashers, Whips, Beats, Extracts, Fruit Juice, Blends, Creams, Etc.



## MIXMASTER

The Food Mixer with all the marvelous attachments Preferred by women everywhere because it is so sturdy, substantial, so EASY-TO-USE. Portable — use it anywhere. Does all the tiring arm-work of cooking, baking, getting the meals. The ideal gift for her.

Smith Electric Co. SINCE 1918 PHONE 173

was presented him in 1887 while the family lived in North Branch, Le-Peer County, Michigan. The gift is in a fine state of preservation and is highly prized by Mr. Size.

SEE THE NEW FORD You will be surprised at the price of the new 1935 Ford car. John Flanagan Buggy Company.

W. M. B. BROWN, M. D. Eye, Ear, Nose and Throat Examination For Glasses 319-325 National Bank Bldg. Office Hours: 9-12:30; 2-4 Wednesday 9-1

W. L. BEST, Opt. D. Complete Eye Examination FITTING OF GLASSES

BAGS and GLOVES  
Some people are just "naturals" for a bag or a pair of gloves. Don't disappoint them. Give them one or a pair from our grand collection.

Bags 1.00 to 3.95  
Gloves 1.39 to 3.50

Your gift problems are solved on our 1st. floor

**Blount-Harvey**

HANDKERCHIEFS are always an acceptable gift, but this Christmas ours are more than acceptable. You'll love these exquisite bits of finery—and you may not even bear to give them away. 10c to 50c.

MAKE-UP BOXES 1.00, 1.50  
MANICURE SETS 1.00  
DRESSER SETS 6.50, 7.50, 9.50  
LAMPS  
Some people on your list are lamp fanatics. So delight them by giving them one of these. Boudoir lamps, 1.00. Novelty modern lamps, 1.29. Spinning wheel lamps, 1.49. Table lamps, 2.95 to 6.95. Maple bridge lamps, 1.98.  
STATIONERY  
A thorough expression of good will—a gift of White & Wycoff distinctive stationery in a smart gift box. 50c to 1.98

**The Daily Reflector**  
Every Afternoon Except Sunday  
Established 1883

DAVID J. WHITCHARD, Jr.  
Owner and Publisher  
TELEPHONE 58

Entered at the Post Office at Greenville N. C. as second class mail matter.

**SUBSCRIPTION RATES**  
(Payable in Advance)  
One year ..... \$5.00  
Six months ..... \$2.50  
Three months ..... \$1.25  
One month ..... .50

Subscription will be discontinued at expiration of time paid

**MEMBER ASSOCIATED PRESS**  
The Associated Press is exclusively entitled to use for publication of all news dispatches credited to it or not otherwise credited in this paper and also the local news published herein. All right of republication of special dispatches herein are also reserved.

**NATIONAL ADVERTISING REPRESENTATIVES**  
Thea. F. Clark Co., Inc., New York, Chicago, Indianapolis, Philadelphia, Kansas City.

There are just three more shopping days before Christmas and the sooner you complete your shopping the less tired the clerks in the various stores will be when Christmas comes. Don't put your buying off until the last minute and cause the clerks to have to work in a rush and long hours Monday night for they would like to have a little time of their own, too, to get ready for Christmas.

**GRATEFUL TO THEM, TOO**

Carl Goerch, editor of The State, recently commented upon the fact that tobacco growers had thanked the government and others for the higher tobacco prices this year and he asks whether or not anyone has taken the trouble to thank the manufacturers who have paid these higher prices to the farmers.

Turning his questioning to the tobacco manufacturers, Carl asks:

"Gentlemen: have any of you received a single letter from a single tobacco farmer in North Carolina, thanking you for the part you played in bringing about this big increase in the current price of tobacco?"

In justice to the farmers we would like to answer Carl's question by pointing out the fact that so far as the farmers are concerned the local buyers are the buying companies and certainly on this market the buyers have personally been thanked by hundreds and hundreds of farmers for the fine prices paid for tobacco this season. We have witnessed a good portion of the sales made on the Greenville market this season and in a great number of instances after a grower had completed his sale he took opportunity in a loud voice to thank the buyers for the prices they had paid and in many instances the sales were halted for the growers to shake hands all around with the buyers. While the farmers might not have written letters to the heads of the buying companies, they have expressed their thanks to the representatives of the companies and we are confident they are grateful to everyone who has had any part in their prosperity this fall.

**THE NATIONAL WHIRLIGIG**

(Continued From Page One)  
tax on advertising in all papers of any size. The publishers are now challenging validity of this law in the courts.

Bating: Did you ever hear of a man who would like to be court-martialed? Who had furnished

what seemed to be grounds, but who can't get any action?

Captain John H. Craig one of the country's best known Marines, might qualify for the description. Soldier of fortune, onetime amateur heavyweight boxing phenom, chief press agent for the Marine Corps during its build-up stage, Craig is now retired as a result of injuries he received in an auto accident—but he could still stand court-martial.

Captain Jack, who helped rule Haiti with an iron hand during the long Marine occupation, wrote two books and therein lies the story.

The last book called "Cannibal Cousins". The title comes from the fact a cousin of a recent Haitian Minister to the United States was convicted by the Marines of cannibalism.

In his book Craig calls a rocking Marine Corps Commandant a former chair soldier. He dissects activities of the high command. He ridicules Haitian aristocracy. Ordinarily such statements by an officer would result in preferment of charges—but the military establishment seemingly is mindful of the dynamism that developed from courts-martial of political nature in the not too distant past and is turning a blind eye.

The book has been on the stalls for some weeks and selling well. But oh, thinks Capt. Craig, what a Christmas sale if the State and Navy Departments had gotten as mad about it as they should have done!

Choice: There should be some significance in the fact that the other day the White House called for the military records of Major General Malin Craig, commander of the 9th Corps Area, and Major General George S. Simonds, head of the Army War College.

A man on the curbstone might almost think that these two officers stood in the front rank for selection as Chief of Staff to succeed General Douglas MacArthur. Inasmuch as Craig was reported on Postmaster General Farley's preferred list he would seem to be standing two paces forward.

General Craig is 59 years old, born in St. Louis. He has had a distinguished military career running through the Spanish-American War, the China Relief Expedition and the World War. In France he served in several key positions of the A. E. F. high command.

General Simonds was born in Cresco, Iowa, 60 years ago. He, too, has a splendid record running from the Philippine and China troubles at the turn of the century through the World War, during which he commanded the American Embarkation Center at Le Mans. As head of the Army War College Simonds worked out the war game that stumped the General Staff last fall.

Chatties: The "Air Our Minds Club" may take in a new member immediately after the first of the year.

This probably is a new one on you but an outsider would be entitled to the belief the Air Our Minds Club is a rather potent factor in Washington political life. For months this highly informal organization has been meeting irregularly every week or so and exchanging views on current economic, social, political and international problems. Here is the charter membership.

Mrs. Franklin D. Roosevelt, Secretary of Labor Frances Perkins, Lady Elizabeth Lindsay, wife of the British Ambassador, Rep. Isabella Greenway of Arizona, and Mrs. Marry Harriman Rumsey, head of the Consumers' Council of NRA and NEC. Other women of public affairs unquestionably have joined the knitting circle from time to time.

The new member should be Mrs. Caroline O'Day, whose campaign for a seat as Representative-at-large from New York Mrs. Roosevelt successfully championed in the last election.

**New York**  
By JAMES McMULLIN  
Contrast: A financial observer just returned from the Middle West notes a striking difference in the labor relations of the motor and rubber companies.

He predicts a serious flare-up in the tire industry. The antagonism between Goodrich and Firestone and their employees cuts deep. The managements—whom he describes as Mark-Hanna-minded—have consistently stuck to the position that they have nothing to discuss with their workers. So far as they're concerned Section 7a is simply a bad dream from which the country will presently awake and the National Labor Board is an impudent interloper. Many employees are bitter about this high-hat attitude and it wouldn't take much to fan the embers of resentment into a lively flame. The situation has gotten past the stage where a compromise might be arranged by talking things over.

The auto companies and their workers are just as far apart on basic issues but there's a sharp contrast: in the way the motor managements deal with the labor opposition. They make a point of being approachable. While they aren't giving any ground on fundamentals they don't shy away from discussing ticklish topics. Consequently their arguments with labor are carried on in a reasonably friendly spirit and the safety valve of free speech helps keep them in the talking stage. Despite the union feeling that proportional representation was slipped over them they aren't in a mood to start overt hostilities.

There's one notable exception to the general attitude of amiable enmity. The Mechanics' Educational Society turns a deaf ear to the conversational overtures of the employees. It stands pat on its \$30 for 30 hours platform and its temper is anything but pacific. The prophecy still holds that this group will start swinging in earnest next month.

**THE ONLY TRUCK AT ANY PRICE THAT GIVES YOU ALL THESE FEATURES**

**New Comfortable Coupe Type Cab**

Welded all-steel construction. Real passenger-car comfort for the driver. Adjustable driver's seat of tilting-back type. Passenger-car-type instruments grouped directly in front of the driver, with dispatch box at the right of the instrument panel. Safety glass is standard equipment throughout. Triple ventilation includes: (1) Clear-Vision Ventilation in door windows; (2) easy-opening windshield operated by a single center control; (3) large screened cow ventilator. Seat width increased to 48 1/2 inches. Plenty of leg room and elbow room. Interior of cab completely lined with attractive, durable pebble-grain material. Insulated roof and dash. New 18-gallon fuel tank with conveniently located filler cap.

**New Quick-Stopping Rib-Cooled Brakes**

Cast alloy iron drums with integral cooling ribs dissipate heat faster. Drums will not "bell-mouth." No "fading," even when making a series of quick stops in rapid succession. Newly designed brake mechanism makes stopping quicker and smoother with heavy loads. Longer life between brake adjustments.

**New Truck-Type Heavy-Duty Clutch**

New design assures much longer clutch life, minimizes slippage and permits smoother engagement. Lower pedal pressure at idling speed. Weights on outer ends of clutch release levers increase plate pressure by centrifugal force as the speed of the engine increases. Improved ventilation makes clutch run cooler. Diameter increased to 11 inches. Larger frictional area. Vibration dampener eliminates synchronized engine and axle noises.

**New High-Efficiency Cooling System**

Larger water pump impellers circulate more water per minute. Six-blade 15-inch fan draws more air through radiator. Radiator 2 1/2 inches wider, 15% more radiating area. Water jackets extend full length of cylinder walls and along upper part of crankcase, keeping both engine and oil at efficient operating temperatures.

**New Crankcase Ventilation System**

Directed-flow crankcase ventilation reduces corrosion and oil dilution by removing acid fumes, water vapor, unburned gasoline and other impurities.

**V-8 Performance with 4-Cylinder Economy**

The Ford V-8 truck engine develops more than 80 horsepower. Uses no more fuel than a "four." Dual carburetor and dual intake manifold. Light-weight, cast alloy pistons. Exhaust valve seat inserts. Heavy-duty copper-lead connecting-rod bearings. Special truck-type cylinder heads.

**Low-cost Engine Exchange Plan.**  
**Full-floating Rear Axle with Straddle-mounted Driving Pinion . . . Full Torque-tube Drive Permits Free-shackling of Semi-elliptic Rear Springs . . . Deep, Rugged Frame with no "Kick-up" . . . Oilless Front Spring Shaekles . . . Baked Enamel Finish . . . Deep-skirted Fenders Match Colors of Hood and Cab.**

**THE NEW 1935 FORD V-8 TRUCK**

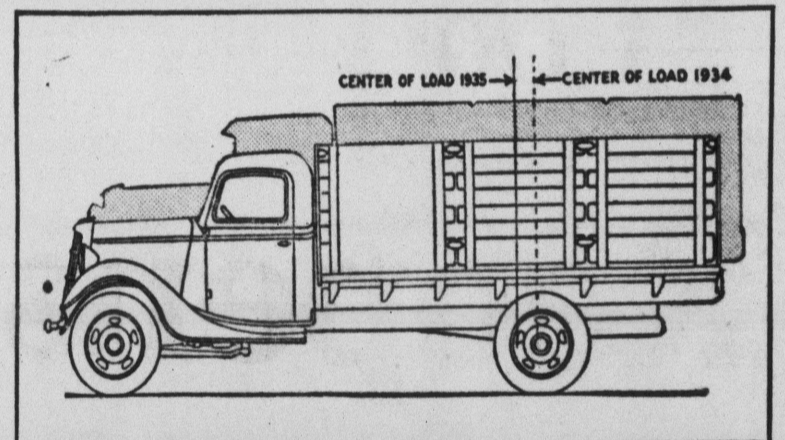


One hundred and twenty-five thousand Ford V-8 Trucks in use throughout the world have proved their right to the claim "America's great truck value." Because of this widespread acceptance, the entire production of Ford Truck engines is of the V-8 type.

To the proved design of the Ford V-8 Truck have been added the advantages of NEW load distribution which improves braking efficiency and results in more uniform tire and brake wear . . . NEW brakes that make stopping quicker and smoother with heavy loads . . . a NEW, larger clutch which operates on an entirely new principle . . . NEW Clear-Vision Ventilation, adjustable seat, wider cab and many other features that improve driver comfort . . . SAFETY GLASS IS STANDARD THROUGHOUT AT NO EXTRA COST . . . NEW cooling efficiency results from larger radiator and water pump impellers . . . NEW crankcase ventilation reduces corrosion and oil dilution . . . NEW skirted fenders and NEW cab design materially improve appearance.

But from your point of view, the most important question is: "What will this new truck do for me?" Your Ford dealer is ready to answer that question right NOW. He is so proud of this new truck . . . he is so confident of V-8 performance and V-8 economy that he will gladly arrange an "on-the-job" test for you if you are in the market for a new truck. Ask your Ford dealer to let you try a 1935 Ford V-8 Truck with your own loads . . . over your own routes . . . with your own driver at the wheel.

Then ask the price! Such performance and economy at a price so low will convince you once and for all that this 1935 Ford V-8 Truck is now more than ever AMERICA'S GREAT TRUCK VALUE!



The front spring and engine have been moved forward on the chassis, thus making it possible to move the body further forward. This arrangement reduces the amount of body overhang, permits more room in the cab, and moves the load-center forward. The distance from back of cab to center of rear axle is increased 6 1/2 inches. This new load distribution results in more efficient braking and more uniform tire and brake wear.

**PRICES**

131 1/2-inch Chassis . . .	\$500	157-inch Chassis with Closed Cab . . . . .	\$620
131 1/2-inch Chassis with Closed Cab . . . . .	595	157-inch Platform . . . . .	690
131 1/2-inch Platform . . . . .	650	157-inch Stake . . . . .	735
131 1/2-inch Stake . . . . .	675	112-inch Commercial Car (Closed Cab Chassis) . . . . .	455
131 1/2-inch Dump Chassis . . . . .	530	112-inch Commercial Car (pick-up) . . . . .	480
131 1/2-inch Dump Chassis with Closed Cab . . . . .	625		
131 1/2-inch Dump Truck . . . . .	800		
157-inch Chassis . . . . .	525		

(All prices f. o. b. Detroit. Conventional terms through facilities of Universal Credit Co.)

ALSO A NEW LINE OF SMART, FAST FORD V-8 COMMERCIAL CARS

**John Flanagan Buggy Co.**

FORD DEALERS IN THE GREENVILLE TERRITORY

# Dagmar's Adventures in Santa Claus Land

BY SIGRID ARNE



Santa was so surprised he couldn't say anything...

SYNOPSIS: One of Santa's toy soldier's has invaded the mole kingdom in disguise to recover a magic pebble lost there. He is accompanied by Dagmar, a doll, and their friend, an earth-worm. They are trying to stop the moles from ruining Santa's holly trees.

"They must all have run up the stairs looking for us," whispered the tin soldier. "I never did see them so excited," whispered the earth-worm. "Come on, let's look around while they're gone," said the tin soldier. "Oh, I'm afraid," said Dagmar. "It's all right," said the worm. "They can't see us even if they come back."

### CHAPTER X

#### The Royal Mole Baby

As the two dolls and their friend, the earth-worm, stood and watched the excited moles stream by, hunting them, they giggled very quietly to themselves. The king mole ran by, hanging on to his crown, and he passed so near Dagmar she could have pulled his whiskers. But you can be sure she didn't. After he had gone everything became very quiet in the big room where they dolls had first seen all the moles collected in conference.

So the three slipped very cautiously into the moles' big underground home. Tables and chairs were overturned by the moles' mad rush when they left. Fires were burning on two large hearths. The king had dropped some papers near the throne. And over in the corner what do you suppose he saw? A white row of cunning, little crabs. They tip-toed over and pecked in. There lay a whole dozen of little moles babies. One was crying, and crying very hard too. "Mm-m!" said Dagmar, "he's hungry. Poor thing, let's find him some milk." So they looked and looked.

and there wasn't a thing for the little fellow. "Look," said the earth-worm pointing to a little crown carved on the baby's crib, "he must be the royal mole baby." "Humph! Pretty bad care they take of him," said Dagmar. "He's coming to Toyland with us where he won't have to cry so." As she talked Dagmar lifted the little mole from his crib, wrapped him carefully in some old mole skins, and tip-toed to the door. The others followed. The tiny baby was so comfortable he stopped crying right away.

They no sooner arrived in the outside entrance hall than the moles began coming back, chattering and very annoyed because they failed to find the dolls. When they had all returned and shut the door behind them, the two dolls carrying the sleeping mole baby, and the earth-worm following, hurried up the long snow-capped fields near Santa's toyshop.

"Oh, doesn't Toyland look good after all our worry and adventures!" said Dagmar with a sigh. All three ran happily across the snow, and when they arrived at the toyshop door the tin soldier whipped out his sword and rapped. Then he rubbed the magic pebble and they all became visible again. Santa, himself, opened the door. He was so surprised he couldn't say anything. Then he just gathered them all up in his arms, and shouted: "They're back. Hurrah!"

**SEE THE NEW FORD**  
The New 1935 Ford car will have New Lines—New Brakes—New Upholstery—America's Most Beautiful Low Priced Car. On display December 29th in our showrooms. John Flanagan Buggy Company.

John Lawrence, of Durant, Okla., used one pocketknife for fifty-three years.

The women's department of the Salvation Army supplied 21,100 meals and 6,677 zeds to women last July.

Oklahoma's farm population has increased 12 per cent over the 1929 figure.

More than one hundred coyotes were trapped in a month on the Mashed-O ranch near Amarillo, Tex.

## Farming Implements For SALE

On Rickey Moore or Wooten Farm on Washington Road (Route 91) 4 Miles East of Greenville  
**AT 11 O'CLOCK SATURDAY MORNING DEC. 22**

Implements and equipment for a four horse farm, including Tractor, Bush and Bog, and Double Disc Harrows, Plows etc. Also 3 Cows (one fresh) one fine Jersey Bull, and about 25 barrels of corn.  
**F. M. Wooten**

## THE NEW 1935 FORD CAR

Will be on display in our showrooms on or before  
**DECEMBER 29TH**  
This new car will be the best Mr. Ford has ever built--- and the most beautiful

New Lines, New Interior, New Upholstering, New Brakes. All In All, America's Most Beautiful Low Priced Car.  
**YOU WILL BE SURPRISED**  
At the price Mr. Ford will put on this New 1935 Car  
If you buy any other car before you see the New 1935 Ford you will be sorry---Wait to see the New 1935 Ford and be convinced.

**JOHN FLANAGAN BUGGY CO.**  
East Fourth Street  Phone 47

**OPENING HOUR**  
Special While They Last  
79c Hose Sale Price  
2 Pair  
**\$1.00**

*Positively Only 3 More Days*  
**COBURN'S SHOE SALE**  
*Of Quality Footwear*

**OPENING HOUR**  
Special  
Bed Room Slippers  
Sale Price  
**19c**

# Reopens Friday, Dec. 21-10 A.M.





The People of Greenville and East Carolina Know About Our Shoe Sales Why Say More. Below Are a Few Prices That Talk

Rack of  
**Ladies' Shoes**  
Odd Lots, Values to \$5.00  
Sale Price  
**97c** 

Lot Ladies  
**Dress Slippers**  
Ties, Pumps and Oxfords  
Sale Price  
**\$1.94** 

**SELBY** Shoes for Women values to \$6.70 Sale price **\$5.33**  
**NUNN BUSH** shoes for men Sale price **\$5.33** and \$7.44

**A REAL SELECTION**

**97c \$1.94 \$2.88 \$2.91**

**COBURN'S SHOES, INC.**

Rack Men's  
**Oxfords**  
Odd Lots  
Sale Price  
**\$1.45** 

**PLENTY NEW STYLES FOR Men REDUCED**  
Sale Price  
**\$1.94** 

### New Ford V-8 Truck Goes On Display Here

Better load distribution and materially improved driver comfort are among the important improvements in Ford V-8 trucks for 1935.

A softer, more effective clutch improved braking and substantial improvements in the cooling system are design features appealing to owners and drivers.

Although in all 49 improvements are announced, there is but a single change in the 80-horsepower V-8 engine—a directed-flow crankcase ventilation system.

Described as the Ford V-8 "double duty" truck, the line for 1935 includes seven types. Special attention has been given to smartness of appearance in all of these with new front-end appearance, a new cab design and wider and deeper fenders with large skirted aprons.

The truck is available in two wheelbases, 131 1/2 and 157 inches, and the following types:

131 1/2-inch chassis—panel, platform, stake, hydraulic dump, cab and chassis with dual wheels and auxiliary springs for tractor use.

57-inch chassis—platform and stake.

The "double-duty" designation, it was explained, is based on the truck's ability to give speed for fast delivery, as well as power and ruggedness for heavy-duty hauling.

The additional room on the truck chassis has been obtained by moving the engine forward, increasing the distance from the back of the cab to the centerline of the rear axle by 6 1/2 inches. This moved the load center forward so that more of the load is now carried on the front axle. This more ideal distribution of the load gives increased brake effectiveness and more uniform tire and brake wear, also allowing acute angle turn with full-width semitrailer and reducing the body overhang.

A high-efficiency cooling system, including a wider radiator with 15 per cent greater cooling area, is a new feature. It includes larger water pump impellers and a six-blade 15 1/2-inch fan. Water-jackets extend the full length of the cylinder walls and along the upper crankcase walls, keeping both the engine and the oil in the crankcase at efficient operating temperature.

The new heavy-duty clutch is built for longer life and smoother engagement. The pedal pressure at idling speeds is reduced. Centrifugal force developed by means of weights at the outer ends of the clutch release levers is applied as the engine speed increases to insure maximum resistance to slippage. The clutch diameter has been increased to 11 inches, giving more than 123 square inches of frictional surface. Its design has been simplified with fewer working parts, and the clutch is ventilated for cooler operation.

Brake drums are cast alloy iron with integral cooling ribs and an extra large reinforcing rib to prevent distortion. The brake-shoe pressure is more evenly distributed by a newly-designed and simpler internal mechanism. The brakes are designed to require less frequent adjustment.

Steering stability and riding ease have been improved by mounting the front spring four inches ahead of the front axle. The front spring is longer, with shackles closer to the wheels. Oilless shackle bearing are provided. The front axle is heavier.

The full-floating rear axle, in which the load is carried on the reinforced axle housing, is continued. All driving and braking stresses are transmitted directly to the frame through the full torque tube and radius rods.

The new heavy-duty clutch is built for longer life and smoother engagement. The pedal pressure at idling speeds is reduced. Centrifugal force developed by means of weights at the outer ends of the clutch release levers is applied as the engine speed increases to insure maximum resistance to slippage. The clutch diameter has been increased to 11 inches, giving more than 123 square inches of frictional surface. Its design has been simplified with fewer working parts, and the clutch is ventilated for cooler operation.

Brake drums are cast alloy iron with integral cooling ribs and an extra large reinforcing rib to prevent distortion. The brake-shoe pressure is more evenly distributed by a newly-designed and simpler internal mechanism. The brakes are designed to require less frequent adjustment.

Steering stability and riding ease have been improved by mounting the front spring four inches ahead of the front axle. The front spring is longer, with shackles closer to the wheels. Oilless shackle bearing are provided. The front axle is heavier.

The full-floating rear axle, in which the load is carried on the reinforced axle housing, is continued. All driving and braking stresses are transmitted directly to the frame through the full torque tube and radius rods.

The new heavy-duty clutch is built for longer life and smoother engagement. The pedal pressure at idling speeds is reduced. Centrifugal force developed by means of weights at the outer ends of the clutch release levers is applied as the engine speed increases to insure maximum resistance to slippage. The clutch diameter has been increased to 11 inches, giving more than 123 square inches of frictional surface. Its design has been simplified with fewer working parts, and the clutch is ventilated for cooler operation.

Brake drums are cast alloy iron with integral cooling ribs and an extra large reinforcing rib to prevent distortion. The brake-shoe pressure is more evenly distributed by a newly-designed and simpler internal mechanism. The brakes are designed to require less frequent adjustment.

Steering stability and riding ease have been improved by mounting the front spring four inches ahead of the front axle. The front spring is longer, with shackles closer to the wheels. Oilless shackle bearing are provided. The front axle is heavier.

The full-floating rear axle, in which the load is carried on the reinforced axle housing, is continued. All driving and braking stresses are transmitted directly to the frame through the full torque tube and radius rods.

The new heavy-duty clutch is built for longer life and smoother engagement. The pedal pressure at idling speeds is reduced. Centrifugal force developed by means of weights at the outer ends of the clutch release levers is applied as the engine speed increases to insure maximum resistance to slippage. The clutch diameter has been increased to 11 inches, giving more than 123 square inches of frictional surface. Its design has been simplified with fewer working parts, and the clutch is ventilated for cooler operation.

Brake drums are cast alloy iron with integral cooling ribs and an extra large reinforcing rib to prevent distortion. The brake-shoe pressure is more evenly distributed by a newly-designed and simpler internal mechanism. The brakes are designed to require less frequent adjustment.

Steering stability and riding ease have been improved by mounting the front spring four inches ahead of the front axle. The front spring is longer, with shackles closer to the wheels. Oilless shackle bearing are provided. The front axle is heavier.

The full-floating rear axle, in which the load is carried on the reinforced axle housing, is continued. All driving and braking stresses are transmitted directly to the frame through the full torque tube and radius rods.

The new heavy-duty clutch is built for longer life and smoother engagement. The pedal pressure at idling speeds is reduced. Centrifugal force developed by means of weights at the outer ends of the clutch release levers is applied as the engine speed increases to insure maximum resistance to slippage. The clutch diameter has been increased to 11 inches, giving more than 123 square inches of frictional surface. Its design has been simplified with fewer working parts, and the clutch is ventilated for cooler operation.

Brake drums are cast alloy iron with integral cooling ribs and an extra large reinforcing rib to prevent distortion. The brake-shoe pressure is more evenly distributed by a newly-designed and simpler internal mechanism. The brakes are designed to require less frequent adjustment.

Steering stability and riding ease have been improved by mounting the front spring four inches ahead of the front axle. The front spring is longer, with shackles closer to the wheels. Oilless shackle bearing are provided. The front axle is heavier.

The full-floating rear axle, in which the load is carried on the reinforced axle housing, is continued. All driving and braking stresses are transmitted directly to the frame through the full torque tube and radius rods.

The new heavy-duty clutch is built for longer life and smoother engagement. The pedal pressure at idling speeds is reduced. Centrifugal force developed by means of weights at the outer ends of the clutch release levers is applied as the engine speed increases to insure maximum resistance to slippage. The clutch diameter has been increased to 11 inches, giving more than 123 square inches of frictional surface. Its design has been simplified with fewer working parts, and the clutch is ventilated for cooler operation.

Brake drums are cast alloy iron with integral cooling ribs and an extra large reinforcing rib to prevent distortion. The brake-shoe pressure is more evenly distributed by a newly-designed and simpler internal mechanism. The brakes are designed to require less frequent adjustment.

Steering stability and riding ease have been improved by mounting the front spring four inches ahead of the front axle. The front spring is longer, with shackles closer to the wheels. Oilless shackle bearing are provided. The front axle is heavier.

The full-floating rear axle, in which the load is carried on the reinforced axle housing, is continued. All driving and braking stresses are transmitted directly to the frame through the full torque tube and radius rods.

The new heavy-duty clutch is built for longer life and smoother engagement. The pedal pressure at idling speeds is reduced. Centrifugal force developed by means of weights at the outer ends of the clutch release levers is applied as the engine speed increases to insure maximum resistance to slippage. The clutch diameter has been increased to 11 inches, giving more than 123 square inches of frictional surface. Its design has been simplified with fewer working parts, and the clutch is ventilated for cooler operation.

Brake drums are cast alloy iron with integral cooling ribs and an extra large reinforcing rib to prevent distortion. The brake-shoe pressure is more evenly distributed by a newly-designed and simpler internal mechanism. The brakes are designed to require less frequent adjustment.

Steering stability and riding ease have been improved by mounting the front spring four inches ahead of the front axle. The front spring is longer, with shackles closer to the wheels. Oilless shackle bearing are provided. The front axle is heavier.

The full-floating rear axle, in which the load is carried on the reinforced axle housing, is continued. All driving and braking stresses are transmitted directly to the frame through the full torque tube and radius rods.

The new heavy-duty clutch is built for longer life and smoother engagement. The pedal pressure at idling speeds is reduced. Centrifugal force developed by means of weights at the outer ends of the clutch release levers is applied as the engine speed increases to insure maximum resistance to slippage. The clutch diameter has been increased to 11 inches, giving more than 123 square inches of frictional surface. Its design has been simplified with fewer working parts, and the clutch is ventilated for cooler operation.

Brake drums are cast alloy iron with integral cooling ribs and an extra large reinforcing rib to prevent distortion. The brake-shoe pressure is more evenly distributed by a newly-designed and simpler internal mechanism. The brakes are designed to require less frequent adjustment.

Steering stability and riding ease have been improved by mounting the front spring four inches ahead of the front axle. The front spring is longer, with shackles closer to the wheels. Oilless shackle bearing are provided. The front axle is heavier.

The full-floating rear axle, in which the load is carried on the reinforced axle housing, is continued. All driving and braking stresses are transmitted directly to the frame through the full torque tube and radius rods.

The new heavy-duty clutch is built for longer life and smoother engagement. The pedal pressure at idling speeds is reduced. Centrifugal force developed by means of weights at the outer ends of the clutch release levers is applied as the engine speed increases to insure maximum resistance to slippage. The clutch diameter has been increased to 11 inches, giving more than 123 square inches of frictional surface. Its design has been simplified with fewer working parts, and the clutch is ventilated for cooler operation.

Brake drums are cast alloy iron with integral cooling ribs and an extra large reinforcing rib to prevent distortion. The brake-shoe pressure is more evenly distributed by a newly-designed and simpler internal mechanism. The brakes are designed to require less frequent adjustment.

Steering stability and riding ease have been improved by mounting the front spring four inches ahead of the front axle. The front spring is longer, with shackles closer to the wheels. Oilless shackle bearing are provided. The front axle is heavier.

The full-floating rear axle, in which the load is carried on the reinforced axle housing, is continued. All driving and braking stresses are transmitted directly to the frame through the full torque tube and radius rods.

The new heavy-duty clutch is built for longer life and smoother engagement. The pedal pressure at idling speeds is reduced. Centrifugal force developed by means of weights at the outer ends of the clutch release levers is applied as the engine speed increases to insure maximum resistance to slippage. The clutch diameter has been increased to 11 inches, giving more than 123 square inches of frictional surface. Its design has been simplified with fewer working parts, and the clutch is ventilated for cooler operation.

Brake drums are cast alloy iron with integral cooling ribs and an extra large reinforcing rib to prevent distortion. The brake-shoe pressure is more evenly distributed by a newly-designed and simpler internal mechanism. The brakes are designed to require less frequent adjustment.

Steering stability and riding ease have been improved by mounting the front spring four inches ahead of the front axle. The front spring is longer, with shackles closer to the wheels. Oilless shackle bearing are provided. The front axle is heavier.

The full-floating rear axle, in which the load is carried on the reinforced axle housing, is continued. All driving and braking stresses are transmitted directly to the frame through the full torque tube and radius rods.

The new heavy-duty clutch is built for longer life and smoother engagement. The pedal pressure at idling speeds is reduced. Centrifugal force developed by means of weights at the outer ends of the clutch release levers is applied as the engine speed increases to insure maximum resistance to slippage. The clutch diameter has been increased to 11 inches, giving more than 123 square inches of frictional surface. Its design has been simplified with fewer working parts, and the clutch is ventilated for cooler operation.

Brake drums are cast alloy iron with integral cooling ribs and an extra large reinforcing rib to prevent distortion. The brake-shoe pressure is more evenly distributed by a newly-designed and simpler internal mechanism. The brakes are designed to require less frequent adjustment.

Steering stability and riding ease have been improved by mounting the front spring four inches ahead of the front axle. The front spring is longer, with shackles closer to the wheels. Oilless shackle bearing are provided. The front axle is heavier.

The full-floating rear axle, in which the load is carried on the reinforced axle housing, is continued. All driving and braking stresses are transmitted directly to the frame through the full torque tube and radius rods.

The new heavy-duty clutch is built for longer life and smoother engagement. The pedal pressure at idling speeds is reduced. Centrifugal force developed by means of weights at the outer ends of the clutch release levers is applied as the engine speed increases to insure maximum resistance to slippage. The clutch diameter has been increased to 11 inches, giving more than 123 square inches of frictional surface. Its design has been simplified with fewer working parts, and the clutch is ventilated for cooler operation.

Brake drums are cast alloy iron with integral cooling ribs and an extra large reinforcing rib to prevent distortion. The brake-shoe pressure is more evenly distributed by a newly-designed and simpler internal mechanism. The brakes are designed to require less frequent adjustment.

Steering stability and riding ease have been improved by mounting the front spring four inches ahead of the front axle. The front spring is longer, with shackles closer to the wheels. Oilless shackle bearing are provided. The front axle is heavier.

The full-floating rear axle, in which the load is carried on the reinforced axle housing, is continued. All driving and braking stresses are transmitted directly to the frame through the full torque tube and radius rods.

The new heavy-duty clutch is built for longer life and smoother engagement. The pedal pressure at idling speeds is reduced. Centrifugal force developed by means of weights at the outer ends of the clutch release levers is applied as the engine speed increases to insure maximum resistance to slippage. The clutch diameter has been increased to 11 inches, giving more than 123 square inches of frictional surface. Its design has been simplified with fewer working parts, and the clutch is ventilated for cooler operation.

Brake drums are cast alloy iron with integral cooling ribs and an extra large reinforcing rib to prevent distortion. The brake-shoe pressure is more evenly distributed by a newly-designed and simpler internal mechanism. The brakes are designed to require less frequent adjustment.

Steering stability and riding ease have been improved by mounting the front spring four inches ahead of the front axle. The front spring is longer, with shackles closer to the wheels. Oilless shackle bearing are provided. The front axle is heavier.

The full-floating rear axle, in which the load is carried on the reinforced axle housing, is continued. All driving and braking stresses are transmitted directly to the frame through the full torque tube and radius rods.

The new heavy-duty clutch is built for longer life and smoother engagement. The pedal pressure at idling speeds is reduced. Centrifugal force developed by means of weights at the outer ends of the clutch release levers is applied as the engine speed increases to insure maximum resistance to slippage. The clutch diameter has been increased to 11 inches, giving more than 123 square inches of frictional surface. Its design has been simplified with fewer working parts, and the clutch is ventilated for cooler operation.

Brake drums are cast alloy iron with integral cooling ribs and an extra large reinforcing rib to prevent distortion. The brake-shoe pressure is more evenly distributed by a newly-designed and simpler internal mechanism. The brakes are designed to require less frequent adjustment.

Steering stability and riding ease have been improved by mounting the front spring four inches ahead of the front axle. The front spring is longer, with shackles closer to the wheels. Oilless shackle bearing are provided. The front axle is heavier.

The full-floating rear axle, in which the load is carried on the reinforced axle housing, is continued. All driving and braking stresses are transmitted directly to the frame through the full torque tube and radius rods.

The new heavy-duty clutch is built for longer life and smoother engagement. The pedal pressure at idling speeds is reduced. Centrifugal force developed by means of weights at the outer ends of the clutch release levers is applied as the engine speed increases to insure maximum resistance to slippage. The clutch diameter has been increased to 11 inches, giving more than 123 square inches of frictional surface. Its design has been simplified with fewer working parts, and the clutch is ventilated for cooler operation.

Brake drums are cast alloy iron with integral cooling ribs and an extra large reinforcing rib to prevent distortion. The brake-shoe pressure is more evenly distributed by a newly-designed and simpler internal mechanism. The brakes are designed to require less frequent adjustment.

Steering stability and riding ease have been improved by mounting the front spring four inches ahead of the front axle. The front spring is longer, with shackles closer to the wheels. Oilless shackle bearing are provided. The front axle is heavier.

The full-floating rear axle, in which the load is carried on the reinforced axle housing, is continued. All driving and braking stresses are transmitted directly to the frame through the full torque tube and radius rods.

The new heavy-duty clutch is built for longer life and smoother engagement. The pedal pressure at idling speeds is reduced. Centrifugal force developed by means of weights at the outer ends of the clutch release levers is applied as the engine speed increases to insure maximum resistance to slippage. The clutch diameter has been increased to 11 inches, giving more than 123 square inches of frictional surface. Its design has been simplified with fewer working parts, and the clutch is ventilated for cooler operation.

Brake drums are cast alloy iron with integral cooling ribs and an extra large reinforcing rib to prevent distortion. The brake-shoe pressure is more evenly distributed by a newly-designed and simpler internal mechanism. The brakes are designed to require less frequent adjustment.

Steering stability and riding ease have been improved by mounting the front spring four inches ahead of the front axle. The front spring is longer, with shackles closer to the wheels. Oilless shackle bearing are provided. The front axle is heavier.

The full-floating rear axle, in which the load is carried on the reinforced axle housing, is continued. All driving and braking stresses are transmitted directly to the frame through the full torque tube and radius rods.

The new heavy-duty clutch is built for longer life and smoother engagement. The pedal pressure at idling speeds is reduced. Centrifugal force developed by means of weights at the outer ends of the clutch release levers is applied as the engine speed increases to insure maximum resistance to slippage. The clutch diameter has been increased to 11 inches, giving more than 123 square inches of frictional surface. Its design has been simplified with fewer working parts, and the clutch is ventilated for cooler operation.

Brake drums are cast alloy iron with integral cooling ribs and an extra large reinforcing rib to prevent distortion. The brake-shoe pressure is more evenly distributed by a newly-designed and simpler internal mechanism. The brakes are designed to require less frequent adjustment.

Steering stability and riding ease have been improved by mounting the front spring four inches ahead of the front axle. The front spring is longer, with shackles closer to the wheels. Oilless shackle bearing are provided. The front axle is heavier.

The full-floating rear axle, in which the load is carried on the reinforced axle housing, is continued. All driving and braking stresses are transmitted directly to the frame through the full torque tube and radius rods.

The new heavy-duty clutch is built for longer life and smoother engagement. The pedal pressure at idling speeds is reduced. Centrifugal force developed by means of weights at the outer ends of the clutch release levers is applied as the engine speed increases to insure maximum resistance to slippage. The clutch diameter has been increased to 11 inches, giving more than 123 square inches of frictional surface. Its design has been simplified with fewer working parts, and the clutch is ventilated for cooler operation.

Brake drums are cast alloy iron with integral cooling ribs and an extra large reinforcing rib to prevent distortion. The brake-shoe pressure is more evenly distributed by a newly-designed and simpler internal mechanism. The brakes are designed to require less frequent adjustment.

Steering stability and riding ease have been improved by mounting the front spring four inches ahead of the front axle. The front spring is longer, with shackles closer to the wheels. Oilless shackle bearing are provided. The front axle is heavier.

The full-floating rear axle, in which the load is carried on the reinforced axle housing, is continued. All driving and braking stresses are transmitted directly to the frame through the full torque tube and radius rods.

## Daily Cross Word Puzzle

**Solution of Yesterday's Puzzle**

1	2	3	4	5	6	7	8	9	10	11	12	13
14				15					16			
17				18					19			
20			21						22			
23									24			
25	26	27					28			29	30	31
32	33	34							36			
37			38						40		41	
42				43					45		46	
47					48				49		50	51
					52				53		54	
55	56	57					58				59	60
61									63			
64									65			
67									68			

**ACROSS**

1. Cut lengthwise  
8. Light cotton or linen fabric  
10. Do up  
14. Broad  
15. Promontory  
16. Sharpening stone  
17. Declare  
18. Row or line  
19. Fried  
20. Annual publication of a society  
22. Sound of rain on the roof  
23. Circles or folds  
24. Cavern  
25. Senior; abbr.  
26. Knock  
28. Clean thoroughly  
34. Lukewarm  
35. Fortification  
37. Jewish month  
39. Postponement  
41. Ceremony  
42. Frogs  
44. Goddess of growing vegetation  
46. Head covering  
47. Large barrel  
48. Assist  
51. Public carrier; abbr.  
52. Lacerated  
53. Wild buffalo

**DOWN**

1. Swing from side to side  
2. Reside  
3. All that could be desired  
4. Extreme fear  
5. Sharpened a razor  
6. Complete confusion or disorder  
7. Skating arena  
8. Writing fluid  
9. Myself  
10. No matter what  
11. Put to flight  
12. Poker term  
13. Equal

**PAW THUS SNOW**  
**ANI ROSE HERE**  
**INTRUDER ICED**  
**RESET DRANK**  
**THE AN LET**  
**DEIVED AGAVE**  
**OVER LOT ACES**  
**SIREN TORRENT**  
**ELDED MIL**  
**ALOOF VITAL**  
**ETNA MOLECULE**  
**RACY EXIT BAN**  
**RAYS DYES ART**

former chairman of the State Highway Commission, was critically ill in Rex Hospital here this afternoon. Dr. N. H. McLeod, Jr., attending Mr. Page, said the banker was critically ill. The nature of the illness was not revealed.

Attached at the hospital this afternoon at 2:15 o'clock said Mr. Page "is not doing so well."

### Negroes Abandon Cargo of Liquor

New Bern, N. C., Dec. 20.—While stopping cars Monday afternoon on the highway in James City, to test their brakes, State Highway Patrolman E. G. McMullan was surprised to see four negroes run their Ford roadster into deep sand and then abandon the car as they took to the fall timbers rather than submit to his questions. Upon examination, he found the reason for their hurry—three and a half cases of whiskey in the machine. He took the car and the liquor into custody, and is now continuing search for the four negroes.

Notre Dame will have two weeks' rest before tackling the Trojans of Southern California at Los Angeles December 8.

### WANTS

**RATES: 1c per word (minimum 25c) per insertion, this size type. Larger type, double price. Persons not having regular account with this office must send or bring cash with copy. No want ads taken over telephone.**

**KEYED ADS ARE STRICTLY CONFIDENTIAL AND NO INFORMATION WILL BE GIVEN—PLEASE DO NOT ASK FOR IT.**

**A FULL LINE OF CUTLERY, Carving Sets, Decorated Cake Boxes, Waste Paper Baskets, Serving Trays and Clothes Hampers. C. H. Edwards Hardware House.**

**SEE US ABOUT THAT PAINT contract, large or small. Use Pe-Gee Paints, Lewis Dutch Boy White Lead and Oil. J. A. Watson, Feed, Seed, Provisions. 20-1f**

**FOR OIL BURNING CIRCULATORS, see us—full assortment in stock. The "Superflex" kind. Home Furniture Store. 20-34**

**CHRISTMAS WREATHS FOR THE grave of your loved one. Make your selection early. Greenville Floral Co., Cotanch St. 18-5t**

**FARM FOR SALE—40 ACRES—25 cleared, on hard surfaced road, 3 1/2 miles from Greenville. Plenty buildings. Liberal tobacco acreage. Apply to C. M. Warren. 14-1f**

**FOR FRIDAY—TAFFY MACARONS. People's Bakery.**

**GIVE A LIVING ROOM SUITE to the home. That's a gift to the whole family. Home Furniture Store. 5-1f**

**BIG ASSORTMENT OF SMOKING Stands, priced from \$1.00 up—special values. Home Furniture Store, phone 79. 11-1f**

**Frank Page Sick**  
Raleigh, N. C., Dec. 20.—(AP)—Frank Page, vice-president in charge of the Raleigh branch of the Wachovia Bank and Trust Company and

**FIREWORKS—FIREWORKS**  
All kinds—assorted. Big or small. **CLARK & HORNE**  
Opposite Forbes & Morton Whse. 12-1f

**PLUMBING & HEATING—C. L. Russ**, registered plumber and steam fitter. State License No. 245. Residence phone 886-WX; business phone 636. Shop, 312 Evans St., Greenville, N. C. 13-6t

**PHONE 619. IF IT'S LAUNDRY OR dry cleaning** The Old Reliable—we know how **Rainbow Cleaners** 14-1f

**WE SPECIALIZE ON REPAIRING** fine watches, clocks and jewelry. No job too difficult, 34 years of continuous service. **Best Jewelry Co.** 19-1 mo

**HAVE YOUR MOTOR** Tuned up for Christmas. **PITT OLDSMOBILE CO., Inc.** Near A. C. L. Depot 18-3t

**WANTED—YOU TO SAVE BY** seeing us for your needs in Provisions, Feed and Seed. Also Wire Fence, Posts, Rifles, Horse Collars, etc. **Greenville Dist. Co., L. L. Rives.**

**EXPERT MECHANICS** Repairs any make car. **PITT OLDSMOBILE CO., Inc.** Near A. C. L. Depot 18-3t

**BIG ASSORTMENT OF FOOT** Stools in assorted colors—an ideal gift for \$1.00. **Home Furniture Store, phone 79. 11-1f**

**GET YOUR CLOTHES CLEANED** and pressed for the Christmas holidays—look and see if that tuxedo or evening dress needs to be gotten ready for the holiday dances. **Carolina Dry Cleaners, phone 176—Leon Smith, Prop.**

**PORTABLE OR CABINET** Phonographs—music will help you enjoy Christmas. **Home Furniture Store, phone 79. 11-1f**

**LET SANTA CLAUS BRING** the kiddle a wagon. **Home Furniture Store. 5-1f**

**SEE OUR COLLECTION OF FIRE-**works for your Christmas selection—all sizes—all kinds. **Clark & Horne Fireworks Co., opposite Forbes & Morton Warehouse. 12-1f**

**ATTENTION FARMERS** we will grind your **SAUSAGE MEAT** while you wait—1 cent pound. **W. B. HERRING GROCERY CO.** 509 Dickinson Ave.

**FOR RENT—FIVE ROOM HOUSE** on 13th Street. Call 137. 19-3t

**MODERN GREASE RACK** Quick service. **PITT OLDSMOBILE CO., Inc.** Near A. C. L. Depot 18-3t

**DOLL CARTS FOR THE LIT-**tle girls. **Home Furniture Store. 5-1f**

**NOTICE, SANTA CLAUS—VELO-**lipedes, wagons, skates, air rifles, trains, footballs and Christmas tree lights. Also gifts for the grown-ups. Low prices at **Hooker-Meeks Hdw. Co. 17-6t**

**GET YOUR FIREWORKS FROM** us—a complete assortment of all kinds in all sizes. **Clark & Horne Fireworks Co., Dickinson Ave., opposite Forbes & Morton Warehouse. 12-1f**

**WANTED—5 OR 6 ROOM HOUSE.** Must be well located and in good condition. Call 2707—P. M. **Girganus, Farmville, R. 3. 19-6t**

**POT PLANTS FOR CHRISTMAS** makes the ideal gift. **Greenville Floral Co., Cotanch St. 18-5t**

**CALL W. G. TEEL FOR GROCER-**ies. I deliver. 5 minutes service. **Phone 184. 17-6t**

**CHICKENS, TURKEYS and GESE** Dressed Free We deliver. **Phones 358 & 359 W. B. HERRING GROCERY CO. 27-1f**

**A VELOCIPED WILL BE** just what your boy or girl wants. **Home Furniture Store. 5-1f**

**WANTED—SALESMAN FAMIL-**iar with trade, in Pitt Edgecombe and Martin Counties, to represent fertilizer company. Must be hustler and able to produce. Write giving full experience and general qualifications with list of references. **P. O. Box 408, Greenville, N. C. 19-3t**

**SPECIALS ON BICYCLES** This week only. **C. H. Edwards Hardware House, phone 18.**

**CALL 766 FOR DRY KINDLING** and good heater wood. **Juet and Windom. Mon-Wed-Fri.**

**—SALT—** The very best quality that money can buy. **Special prices on Meat Salt**  
Evaporated Salt  
100 lb. bag fine salt ..... \$1.00  
100 lb. bag medium salt ..... \$1.10  
Mined Salt  
Fine or medium—85c bag  
**J. A. WATSON**  
Seed—Feed—Provisions  
10-eod-1f

**WANTED TO BUY—SEVERAL** hundred bushels soya beans. **Warren Feed Co. 27-1f**

**NICE ASSORTMENT OF** Gladstone Bags, nice gift for husband, son or father. **Home Furniture Store, phone 79. 11-1f**

**CABBAGE PLANTS FOR SALE—**Frost proof cabbage plants, 15 cents per hundred; 60 cents for five hundred; \$1.00 per thousand; \$7.50 for ten thousand lots. My plants are grown without fertilization, which gives you the hardest plant that can be grown. **L. C. Arthur, Greenville, N. C. Nov. 3-1 mo.**

**PECANS FOR SALE—500 POUNDS**—large Stuart and Success—1934 crop, locally grown—20c per pound, any quantity, but not less than 5 pounds. Call at office or phone No. 600 or 957-W. **James L. Evans, Atty. 18-4t**

**TABLES AND LAMPS—ALL** styles and shapes. **Home Furniture Store. 5-1f**

**A COMPLETE STOCK OF** Bicycles, Velocipedes, Wagons, Skates, Shot Guns and Rifles, at very low prices. **C. H. Edwards Hardware House, phone 18.**

**TOY CEDAR CHESTS FROM** 49 cents, 89 cents—\$1.00 and \$1.75. **Home Furniture Store. 18-5t**

### N. Y. Stock List

American Radiator 15.	
American Telephone 102 3-4.	
American Tobacco 82 1-2.	
Anacostia 10 3-4.	
Atlantic Coast Line 33 1-2.	
Atlantic Refining 24.	
Auburn 24 3-4.	
Bendix Aviation 15 7-8.	
Bethlehem Steel 29 7-8.	
Columbia Gas and Electric 7.	
Commercial Solvent 21 1-8.	
Continental Oil 7 1-2.	
DuPont 93 5-8.	
Electric Power Light 2 1-2.	
General Electric 19 5-8.	
General Motors 31.	
Liggett and Myers 104 1-2.	
Montgomery Ward 28.	
Reynolds Tobacco 50 1-4.	
Southern Railway 15 1-4.	
Standard Oil 41 1-8.	
U. S. Steel 37	