

THE DAILY REFLECTOR

O. J. WHICHARD, Editor and Owner.

TRUTH IN PREFERENCE TO FICTION.

TERMS: 25 Cents a Month.

VOL. 11.

GREENVILLE, N. C. THURSDAY, JUNE 7, 1900.

NO. 1699

ICE CREAM.

I HAVE JUST PUT IN A
Handsome Ice Cream Cabinet

and will have on hand at all times, day or night, the finest cream possible. Fruit Creams a specialty. When you want cream for dinner or supper send here and get it. Price per gallon \$1.25, 1/2 gallon 75c, 1 quart 40 cents.

NO ICE CREAM EQUALS THAT OF SHELBURN'S

ED. H. SHELBURN

The Old Reliable.

STATE NEWS

Happenings in North Carolina.

Dr. F. P. Venable has been elected President of the University to succeed Dr. Alderman, resigned. He has for some time been one of the faculty.

A colored man secured a divorce in Halifax court Monday, and within thirty minutes had license to marry another woman. — Scotland Neck Commonwealth.

Elected Again.

H. P. Harding, who for the past year has been teaching in the graded school at New Bern, received a telegram Wednesday evening announcing that he had been unanimously elected principal of the New Bern Graded school for the coming year.

H. M. HARDEE,

10 and 12 I-2c

LAWNS

will go for

7 1-2c, C them

Assortment of

HAMBURGS

4 3-4c yard

Agent "John Strootman"
Fine Ladies' Shoe.

H. M. HARDEE.

The Big Store

Greenville, N. C.

COUNTY COMMISSIONERS.

Proceedings of the June Meeting.

The Board of County Commissioners met in regular session on June 4th. Present R L Davis, Chairman, O W Harrington and C J Tucker.

The following orders were issued on the county treasurer:

Paupers \$143 25, Bridges \$537 15, Jail \$51 35, Stationery \$18 85, Insane \$26 40, Court cost \$93 92, Home of Aged and Infirm \$159 56, Solicitor \$30 00, Coroner \$66 40, Register of Deeds \$16 40, Superintendent of Health \$25 00, Commissioners \$16 80, Miscellaneous \$1 07

The names of Edwin Haddock, Gatsey A. Moore and Elbert Smith were stricken from the pauper list. J L G Manning and T A Thigpen were released from further payment for hire of prisoners.

Four persons were released from payment of poll tax.

John Brown, Theodore Cox and Henry Bynum were released from payment of taxes on property for year 1899 erroneously charged.

James Johnson and William Corbitt were added to the pauper list.

The Board ordered that Canny Brown be taken to the Home of Aged and Infirm.

R. G. Chapman was ordered to build one half of bridge over Creeping Swamp in Chicod township and that the bridge be accepted as a county charge.

O W Harrington and A L Blow were appointed a committee to settle with Sheriff G M Mooring.

The following levy of taxes was made for the year 1900:

General county purposes 23 1/2 cents on the \$100 valuation real and personal property, 40 cents on poll. Peddlers \$25 dollars a horse, peddlers, two horses or more \$35, foot peddlers \$5, Income same as State.

J B Cherry, treasurer and C O H Laughinghouse, coroner, filed their reports which were accepted.

James Cramer was granted one horse peddler's license for one year.

The resignation of Fred Mills as Constable of Chicod township was accepted and John Galloway was appointed to fill the place.

A Smile in Each.

The cream of society is not always formed from the milk of human kindness.

It's about as difficult to win a name as to name a winner.

The man with an itch for notoriety can get it by lively scratching.

Cotton Mill Meeting.

There will be a meeting of the subscribers of the Greenville Cotton Mill in the Court House at 1 o'clock, p. m., Wednesday, June 20th, for the purpose of electing officers and directors, and adopting rules and by-laws and perfecting the organization. All the subscribers have been notified by mail, and every one is expected to attend.

Some girls who talk a lot about what they would do if men tried to kiss them couldn't get a mosquito bite.

The past week has been full of school commencements over the State.

Putting Your Money into

A Savings Bank

IS NEXT BEST TO PUTTING IT INTO

Our Spring Suits,

that awaits your intelligent selection. You draw interest on the former and you draw satisfaction and comfort from what you buy here because it is always the best for the money expended, and that is why we are looked upon as the

Responsible Clothing House

OF THE TOWN.

SERGES.

You will find them here, made up especially for our summer trade. Graceful, stylish and comfortable, not the cheap kind you may see advertised but of quality the best, and in make the durable, in fit the most fashionable, in single or double breasted, all sizes, swell in appearance and elegant in quality.

FRANK WILSON,

THE KING CLOTHIER

Tobacco Warehousemen

We want your Orders for Printing AND ARE IN POSITION TO QUOTE SOME SPECIAL PRICES FOR THE NEXT 30 DAYS.

Manila Floor Tags

In lots of 10,000 at 30 cents per 1,000
In lots of 25,000 at 25 cents per 1,000

Farmers' Bills

In lots of 2,000 at \$1.25 per 1,000
In lots of 5,000 at \$1.15 per 1,000
In lots of 10,000 at \$1.00 per 1,000

Buyers' Bills At same prices as Farmers' Bills.

You can place your orders now and have work delivered any time before the season opens August 1st. Work Guaranteed.

The Reflector Printing Office.

Tobacco Flues.

We are prepared to furnish Flues and Repairs now at lowest prices for cash.

S. E. PENDER & CO.

5-31-1m.

Greenville, N. C.

THE DAILY REFLECTOR

D. J. WHIGHARD, Editor.

EVERY AFTERNOON [except Sunday]

Entered at the Post Office at Greenville, N. C., as Second-Class Mail Matter.

SUBSCRIPTION RATES

One year \$3.00
One month .25
One week .10

Delivered in town by carriers without extra cost.

Advertising rates are liberal and can be had on application to the editor or at the office.

We desire a live correspondent at every Postoffice in the county who will send in brief items of news as it occurs in each neighborhood. Write plainly and only on one side of the paper.

THURSDAY, JUNE 7, 1900.

The Winston Sentinel presents a fine argument in favor of the amendment in this single paragraph:

The same care should be exercised in the management of a State's affairs as in the conduct of individual or copartnership affairs. Suppose that all the people of the State were interested in a business venture, does any one suppose for a moment that the people would consent that all the negroes and a few whites should select the officers to manage the business? Most assuredly not. Then let's use the same business judgment in reference to the State, by adopting the amendment and placing public affairs in the hands of those competent to take care of them.

The editor can write more cheerfully of the business interests of the town when his columns are liberally filled with the advertising of the business houses. No editor can advocate the doctrine of buying from home merchants, unless the home merchants show they are interested in catering to the home trade by advertising in the columns of the local newspaper. It is depressing to the editor to find business men patronizing every advertising fake that comes along, and at the same time the names of these business men are rarely, if ever, seen in the advertising columns of the local newspaper.—Press and Printer.

Increase in the Circulation of Money.

Since May 1 last year there has been an increase of \$164,700,000 gold certificates in circulation and a decrease of \$84,500,000 in gold coin in circulation. National bank notes have increased \$41,100,000. There have been increases in other varieties of money, silver and paper, so that the circulation as a whole has been increased in volume during the year by over \$126,600,000 amounting altogether May 1 to \$2,060,525,463, or \$26.58 per capita, or \$1.09 more than on May 1, 1899. The volume of circulation was never before so large in proportion to the population of the country. If some part of it consists of kinds of money used all over the world, while the rest can be used only in this country, it is to be expected that the kinds that can be used abroad will be exported, especially if the demand and interest rate are better abroad.—Baltimore Sun.

A mob composed entirely of negroes lynched a negro known as Dago Pete, at Tutwiler, Miss., because he had assaulted a colored woman.

Pests of the Tobacco Crop.

RALEIGH, N. C., June 1 1900.

Very severe damage is annually done in tobacco fields by insect pests, and to a lesser degree by parasitic fungi. Much of this damage may be prevented by proper attention. Tobacco, like other crops must be sprayed or dusted with an insecticide. The best treatment for tobacco and one that is entirely safe, is the following:

Paris green, 1 pound
Flowers of sulphur, 3 to 5 pounds
Powdered soap stone or air slaked lime, 100 pounds.

Directions.—Mix thoroughly and apply to the plants while wet with dew or rain. The first treatment should be applied soon after the plants have been set out. The second 2 or 3 weeks later, and a 3rd 2 or 3 weeks after the second. If the weather is wet, more frequent treatments may be necessary, but usually 3 treatments will be sufficient for the crop and season. No treatment should be given within 15 days from time of harvesting crop. The best instrument for applying the above powder is a so-called "powder gun." Addresses of dealers in powder guns will be furnished by the undersigned to those who want them. The above powder may also be put on by jarring from a coarse sack held in the hand, or by two sacks attached one to each end of a pole long enough to reach across two rows. The pole may be carried on a mules back. Only a slight dusting is necessary, but the powder should be evenly distributed on leaves so that no insect can gnaw any leaf without eating the poison. No possible harm can come to the tobacco or those using it from this treatment which is similar to that given fruit for many years without the least danger or complaint.

The worst and most destructive pest of growing tobacco is the flea beetle. *Epithrix parvula*. This is a small, oval, brownish beetle about 1/8 inch long. It eats small, round, pin holes in the leaves which then admit a saprophytic fungus which enlarges the holes. These holes ruin the value of the leaf for many purposes and in every case render it light and chaffy. The larva of grub of this beetle also feeds upon the roots of the plants and does much damage. Besides, tobacco, this insect feeds upon Jamestown weed and horse nettle, and to some extent on "ground cherry" tomato, potato, egg plant and pepper and other plants of the tobacco or solonaceous family. If the Jamestown weed, horse nettle and other solonaceous weeds in the vicinity of a proposed tobacco field are heavily poisoned with Paris green a week or 10 days before setting out the tobacco plants the chances of damage to the tobacco will be greatly lessened. These weeds act as nurses and supports for the beetles before the tobacco comes on the field. The tobacco is so much more juicy and tender that the insects soon quit the weeds for the cultivated crop. After the tobacco has been set out all these solonaceous weeds, horse nettle, Jamestown, ground cherry, etc., should be cut out. After the crop is gathered the stump should be plowed under at once or heavily poisoned to prevent them from breeding insect pests which will damage succeeding crops.

Next in importance to the flea beetle, we must place the horn worm. The remedy advised for the flea beetle will at the same time serve for the horn worm provided it is applied in time. But if the worms get large before being poisoned they must be hand picked. Pickers should carry a small bucket holding some water and a little kerosene oil. Throw the worms

into this as soon as picked. The bud worm or boll worm, is often very destructive to young tobacco by eating into the leaf buds. The best remedy for this insect is a mixture of Paris green 1 part and finely ground corn meal 100 parts. Dust this on the buds. This worm will not eat tobacco while it can get corn. Tobacco is not a good crop to follow corn in rotation.

The leaf miner, is a small greenish caterpillar which eats out the green part of the leaf, leaving the outer skins in tact. It makes irregular or blotch mines in the leaves. Many tobacco growers mistake this for a kind of rot due to wet weather. This little insect does considerable injury in some localities. It infects all the other plants of the tobacco family above named and these serve to propagate it.

Remedy:—Destroy solonaceous weeds as soon as the crop is set out. Watch the crop and as soon as any mining is noticed, pinch the spot and thus kill the inclosed caterpillar. Frequent stirring of the soil close to the plants will destroy this insect while it is in the ground transforming from the worm to the winged insect. The mining is always worst on the lower leaves.

Cut worms of several species often do very great damage by cutting off the young tobacco plants as soon as these are set out. Remedy:—Mix 60 pounds of wheat bran with one pound of Paris green or white arsenic. Add to this 4 ounces of sugar or a quart of molasses and enough water to slightly moisten the whole. A few days before the tobacco is to be set out place a tablespoonful of this mixture at intervals of 10 feet throughout the field. After the plants are set place a teaspoonful of the mixture near each plant. It may be necessary to repeat the treatment but usually once is enough. Cut worms will eat sweetened bran before tobacco. Grasshoppers sometimes injure tobacco in some way. The above bait is the best remedy for these insects.

Tobacco is very free from fungous disease, but such diseases as we find are very hard to control. Walloon or Waterloo is in some years wide spread and then disappears from the locality. Its course is unknown. "Frog's Eye" or white speck is due to a fungus similar to that causing shot-hole in leaves of peach and plum trees. The sulphur prescribed in the powder mentioned at the head of this article is intended chiefly to prevent this damage and will do so if applied in the right way.

Soreshin is a pretty common disease. It seems to be due in the first place to an injury to the stalk near ground caused by the boring of a small beetle worm, which eats into corn stalks in the same way. This beetle is called *Disbrotica*. It is greenish with 12 black spots in the back. A fungus afterward comes in and causes the interior of the tobacco stalk to rot. Remedy:—None so far known to be practicable. Pull up and destroy the diseased plants. They are worthless. The undersigned desires samples of diseased tobacco plants for study and also of the insects found upon the plants. Correspondence is invited from tobacco growers in all parts of North Carolina. Address,

GERALD MCCARTHY,
Entomologist.
N. C. Department of Agriculture

If a man knows a woman as well as he ought to before he proposes to her, he generally won't want to.

Every girl under 20 is dreadfully proud of the way little babies come to her when she holds out her hands to them.

Rev. P. D. Gold on the Negro.

It was not the fault of the colored people that they were made free. No one should blame them for desiring or accepting it.

The war was a punishment sad and sore on the Southern people. The country has never seemed to me since then as it did. When the North over-powered and overwhelmed the South, and stripped them of much of their property and slew the flower of her people, that should have been enough to appease her wrath. Had noble and magnanimous statesmen ruled in the Congress, and had a more generous spirit dwelt in the Northern heart, they would have pitied their Southern brethren—so much greater were they the sufferers; but bitter and revengeful councils ruled in the North and still greater vengeance was wreaked in the South. Their severest act of revenge was the depriving white men of the privilege of taking an active part in national and State legislation unless it was done by a servile submission to all their dictations and investing their ignorant former slaves with a full right to vote and to enact obnoxious laws to rule their former masters.

I lived in a county where negroes held office and ruled that could not write their names. This was true in the neighborhood I lived in, and I was placed under that sort of government.

Such conduct by the United States government is a reproach and shame to the North.

Were the negroes fitted at such a time to vote and to control the elections by their votes, placing the Southern white race, that cherished their manhood and love of liberty, in abject servility.

And So It Was Settled.

"Married life!" sneered the man. "Faugh! I've had enough of it."

The woman, his wife, bethought herself of the old adage.

"Enough for one is enough for two, I suppose" she sighed.

So they were divorced.—Detroit Journal.

President McKinley has cabled congratulations to Prince Albert of Belgium on his engagement to the daughter of the Duke of Bavaria.

After one woman has called on another woman she doesn't like, each of them thinks of some mean thing she intended to say only she forgot it.—New York Press.

We take it for granted

That you desire good work when you send your laundry with us. That is the kind the

Wilmington Steam Laundry turns out. Terms Cash. Satisfaction guaranteed.

H. S. SHEPPARD

BARBERS.

CENTRAL BARBER SHOP. I have moved my Barber Shop to the shop in front of Munford's new big store. I have also associated with me Julius Fleming, who has been working with me for a long time. We have fitted up for the handsomest shop in the town, and offer the public the best service ever offered here. We appreciate highly the liberal patronage we have received in the past. We cordially invite all of our past customers and all others who desire first-class service to come to see us in our new shop. We intend to please you and will do so regardless of expense or labor. We are ready at all times to accommodate you with first-class shave or hair cut. EDMUNDS & FLEMING, Opposite Munford's Big Store.

A. B. PENDER, FASHIONABLE BARBER, Can be found below Five Points. Next door to Reflector office.

G. J. NOBLES, FASHIONABLE BARBER. On Main street, next door to post office Good clean work guaranteed. Under white management.

ATLANTIC COAST LINE RAILROAD CO.

CONDENSED SCHEDULE

TRAINS GOING SOUTH.

DATED	May 27, 1900.		No 32 Daily		No 35 Daily		No 38 Daily ex Sunday		No 41 Daily		No 44 Daily	
	A M	P M	A M	P M	A M	P M	A M	P M	A M	P M	A M	P M
Leave Weldon	11 50	8 58										
Ar Rocky Mount	1 00	9 53										
Leave Tarboro	12 21		6 00									
Lv Rocky Mount	1 05	9 52	6 37	5 15	12 52							
Leave Wilson	1 59	10 35	7 10	5 57	1 40							
Leave Selma	2 53	11 10										
Lv Fayetteville	4 30	12 22										
Ar Florence	7 25	3 24										
			P M	A M								
Ar Goldsboro					7 55							
Lv Goldsboro						6 45	8 30					
Lv Magnolia						7 51	4 35					
Wilmington						9 30	6 00					

TRAINS GOING NORTH.

DATED	May 27, 1900.		No 33 Daily		No 36 Daily ex Sunday		No 39 Daily		No 42 Daily		No 45 Daily	
	A M	P M	A M	P M	A M	P M	A M	P M	A M	P M	A M	P M
Lv Florence	9 50	7 35										
Lv Fayetteville	12 30	9 41										
Leave Selma	1 50	10 54										
Arrive Wilson	2 35	11 38										
			A M	P M								
Lv Wilmington												
Lv Magnolia												
Lv Goldsboro					5 00							
Leave Wilson												
Ar Rocky Mount	3 30	5 33	11 33	10 45	1 12							
Arrive Tarboro	3 30	6 10	12 07	11 22	1 52							
Leave Tarboro	12 21											
Lv Rocky Mount	3 30		12 07									
Ar Weldon	4 32		1 07									

Yadkin Division
Main Line—Train leaves Wilmington 9 00 a m, arrives Fayetteville 12 05 p m, leaves Fayetteville 12 25 p m, arrives Sanford 1 43 p m. Returning leaves Sanford 2 30 p m, arrive Fayetteville 3 41 p m, leaves Fayetteville 3 46 p m, arrives Wilmington 6 40 a m

Bennettsville Branch—Train leaves Bennettsville 8 05 a m, Maxton 9 10 a m, Red Springs 9 40 a m, Hope Mills 10 32 a m, arrive Fayetteville 10 55. Returning leaves Fayetteville 4 40 p m, Hope Mills 4 55 p m, Red Springs 5 35 p m, Maxton 6 15 p m, arrives Bennettsville 7 15 p m

Connections at Fayetteville with train No 78 at Maxton with the Carolina Central Railroad, at Red Springs with the Red Springs & Bowmore railroad, at Sanford with the Seaboard Air Line and Southern Railway at Gulf with the Durham and Charlotte Railroad.

Train on the Scotland Neck Branch Road leaves Weldon 3 55 p m, Halifax 4 17 p m, arrives Scotland Neck at 5 08 p m, Greenville 5 57 p m, Kinston 7 55 p m. Returning leaves Kinston 7 50 a m, Greenville 8 52 a m, arriving Halifax at 11 18 a m, Weldon 11 33 a m, daily except Sunday.

Trains on Washington Branch leave Wagon 8 10 a m and 3 30 p m, arrive Parmele 9 a m and 4 00 p m, returning leave Parmele 9 35 a m and 6 30 p m, arrive Washington 11 00 a m and 7 30 p m, daily except Sunday.

Train leaves Tarboro daily except Sunday at 6 30 p m, Sunday 4 15 p m, arrives Plymouth 7 40 p m, 6 10 p m, returning leaves Plymouth daily, except Sunday, 7 50 a m, and Sunday 9 00 a m, arrives Tarboro 10 10 a m, 11 00 a m.

Train on Midland N C branch leaves Goldsboro daily, except Sunday, 5 30 a m, arriving Smithfield 6 40 a m, returning leaves Smithfield 7 35 a m, arrives at Goldsboro 9 a m.

Train on Nashville Branch leave Rocky Mount at 9 30 a m, 3 40 p m, arrive Nashville 10 20 a m, 4 03 p m, Spring Hope 11 a m, 4 25 p m. Returning leave Spring Hope 11 20 a m, 4 55 p m, Nashville 11 45 a m, arrive at Rocky Mount 12 10 a m, 6 00 p m, daily except Sunday.

Train on Clinton Branch leaves Warsaw for Clinton daily, except Sunday, 7 45 a m and 4 25 p m, returning leaves Clinton at 6 45 a m and 10 50 p m.

Train No 78 makes close connection. Well don for all points North daily, all rail, via Richmond.

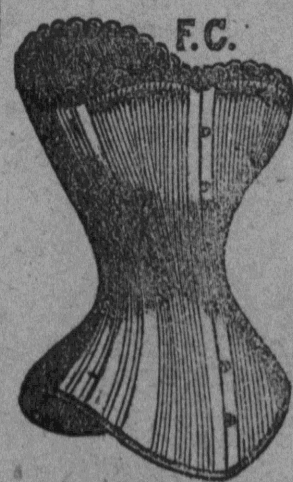
H. M. EMERSON,
Gen'l Pass. Agent

J. R. KENLY, Gen'l Manager.

T. M. EMERSON, Traffic Manager.

F.C. CORSETS

MAKE American Beauties



CORRECT SHAPES. ARTISTIC EFFECTS.



All Lengths.

On Each Box.

NEWEST MODELS.

FANCY and PLAIN.

KALAMAZOO CORSET CO.

SOLE MANUFACTURERS. SOLD BY

J. C. COBB & SON

DIRECTORY

CHURCHES.

EPISCOPAL.—Sunday-school 9:30 a. m. W. B. Brown, superintendent. Lay Services every 2nd and 4th Sunday morning.

BAPTIST.—Services every Sunday, morning and evening. Prayer-meeting Wednesday evening. Rev. J. N. Booth, pastor. Sunday-school 9:30 a. m. C. D. Rountree, superintendent.

METHODIST.—Services every Sunday, morning and evening. Prayer meeting Wednesday evening. Rev. N. M. Watson, pastor. Sunday school 3 p. m. W. F. Harding, superintendent.

PRESBYTERIAN.—Services third Sunday, morning and evening. Rev. J. B. Morton, pastor. Sunday-school 10 a. m. E. B. Ficklen superintendent.

CHRISTIAN.—Services at the Opera House every 2nd Sunday morning and night. Rev. D. W. Davis, pastor.

CATHOLIC.—No regular services.

LODGES.

A. F. & A. M.—Greenville Lodge, No. 284, meets first and third Monday evening. R. Williams, W. M. J. M. Reuss, Sec.

I. O. O. F.—Covenant Lodge, No. 17. Meets every Tuesday evening. R. L. Humber, N. G. E. E. Griffin, Sec.

K. of P.—Tar River Lodge, No. 93, meets every Friday evening. R. M. Moye, C. C.; T. M. Hooker, K. of R. and S.

E. A.—Zeb Vance Council, No. 1696, meets every Thursday evening. W. B. Wilson, R. M. R. Lang, Sec.

J. R. O. U. A. M.—Meets every Wednesday night at 7:30, in I. O. O. F. hall. J. B. White, Councillor.

A. O. A.—Egyptian Council, No. 6, meets every first and third Thursday nights in Odd Fellows Hall. J. Z. Gardner, Worthy Chief; D. S. Smith, Sec.

I. O. H.—Greenville Conclave No. 540, meets every second and fourth Monday nights in Odd Fellows Hall. W. B. Wilson, Archon; D. S. Smith, Sec.

— ESTABLISHED 1875. —

S. M. Schultz.

Wholesale and retail Grocer and Furniture Dealer. Cash paid for Hides, Fur, Cotton Seed, Oil Barrels, Turkeys, Egg, etc. Bedsteads, Mattresses, Oak Suits, Baby Carriages, Go-Carts, Parlor Suits, Tables, Lounges, Safes, P. Lorrillard and Gail & Ax Snuff, Red Meat Tobacco, Key West Cheroots, American Beauty Cigarettes, Canned Cherries, Peaches, Apples, Pine Apples, Syrup, Jelly, Milk, Flour, Sugar, Coffee, Meat, Soap, Lye, Magic Food, Matches, Oil, Cotton Seed Meal and Hulls, Garden Seeds, Oranges, Apples, Nuts, Candies, Dried Apples, Peaches, Prunes, Currents, Raisins, Glass and China Ware, Tin and Wooden Ware, Cakes and Crackers, Macaroni, Cheese, Best Butter, Standard Sewing Machines, and numerous other goods. Quality and Quantity. Cheap for cash. Come to see me.

SAM M SCHULTZ
Phone 55.

SCREEN DOORS and WINDOWS.

Screen Wire for making extra sizes.
3 1/2 Minute Ice Cream Freezers
Hammocks to rest in, all sold cheap at

Baker & Hart.

CONVENTIONALITIES.

Notes on Anything Handy and Newsy.

Board of Aldermen meet tonight.

You will find the finest ice cream at Bryan's Drug Store.

Chocolate Cream Soda, a specialty, at Bryan's Soda Fountain.

Just received, all colors in Or gandies 10c H. M. HARDEE.

Nice mourning paper and other box paper at Reflector Book Store

All widths Satin back Velvet Ribbon cheap. H. M. HARDEE.

Farmers should not be in a hurry to dig their potatoes. The price is too low now to ship.

20 Standard Sewing Machines are run every day in Pitt county Cheap at S. M. Schultz's

"Mendsall" mends everything and will stand hot water. 10 cents a bottle at Reflector Book Store.

New corned beef, chicken feed, grits and Irish potatoes, just arrived at T. F. Christman & Co's.

The Campus tablet at 5 cents beats anything going. These and other nice tablets at Reflector Book Store.

The game of ball Wednesday between the second nine and scrubs, resulted in a score of 21 to 12 in favor of the second.

The No. 018 Parker jointless lucky curve fountain pen is the very thing for Census Enumerators. You can find them at the Reflector Book Store.

Greenville White Supremacy Club organizes Friday night and raises the flag over Democratic headquarters Saturday afternoon.

Rev. F. A. Bishop will preach and hold quarterly conference for Ayden circuit, at Ayden, Saturday and Sunday, June 16th and 17th.

The commencement of the Free Will Baptist Seminary, at Ayden, takes place tomorrow. Rev. J. N. Booth, of Greenville, delivers the address.

H. A. Blow, tax lister for Greenville township will list taxes at Parker's Cross Roads tomorrow. C. D. Rountree, the tax lister for the town, will not be at the Court House tomorrow.

GRIFTON ITEMS

GRIFTON, N. C. June 7, 1900.

C. J. Tucker went to Greenville Monday.

Otis Gaskin spent the day in Greenville Tuesday.

Will Thompson, of LaGrange, is here for a few days.

Rev. T. M. N. George, pastor of the Episcopal church at New Bern, and Rev. J. H. Griffith, the pastor of the Episcopal church at Kinston, came down on the morning train enroute to St Johns.

Felix Pittman, representing the Gaskins' Cycle Co stopped home Saturday and Sunday.

Capt R. E. Pittman and Mrs Sallie Pittman went to Kinston Saturday.

A large bear was killed near here Tuesday by several men. Major Gaskins fired the fatal shot.

A large crowd attended the picnic at St Johns Wednesday.

Rev. Daniel E. Motley the State evangelist preached two able and interesting sermons here Sunday night and Monday.

W. S. Blount Sr. went to New Bern today.

What is Your Guess?

There are only five more days in which you can guess at the population of Greenville. Each subscriber to THE REFLECTOR is entitled to one guess. Remember the one guessing nearest the number gets a years subscription to THE DAILY REFLECTOR or THE EASTERN REFLECTOR.

Cut out the blank in another column of the paper, fill in the number, sign your name and bring or send it to THE REFLECTOR office.

OUR NOMINEES:

State Ticket.

For Governor:

CHARLES B. AYCOCK,
of Wayne.

For Lieutenant Governor:
WILFRED D. TURNER,
of Iredell.

For Secretary of State:
J. BRYAN GRIMES,
of Pitt.

For Treasurer:
BENJAMIN R. LACY,
of Wake.

For Auditor:
B. F. DIXON,
of Cleveland.

For Attorney General:
ROBERT D. GILMER,
of Haywood.

For Superintendent Public Instruction:
THOMAS F. TOON,
of Robeson.

For Commissioner Agriculture:
SAMUEL L. PATTERSON,
of Caldwell.

For Commissioner Labor and Printing:
HENRY B. VARNER,
of Davidson.

For Corporation Commissioners:
SAMUEL L. ROGERS,
of Macon,
FRANK McNEILL,
of New Hanover.

For Presidential Electors-at-Large:
DAN HUGH McLEAN,
of Cumberland.
LEES. OVERMAN,
of Rowan.

County Ticket

For the Senate,
F. G. JAMES.

For Representatives,
W. J. NICHOLS,
T. H. BARNHILL.

For Sheriff,
O. W. HARRINGTON.

For Register of Needs,
T. R. MOORE.

For Treasurer,
J. B. CHERRY.

For Coroner,
C. O. H. LAUGHINGHOUSE.

For Surveyor,
J. D. COX.

For Commissioners,
C. J. TUCKER,
R. L. DAVIS,
W. G. LITTLE.

J. F. KING,

IS BACK IN GREENVILLE AND IS AGAIN ENGAGED IN THE LIVERY BUSINESS

HIS OLD STAND, ON FIFTH STREET. HE WILL KEEP A GOOD LOT OF

HORSES & MULES

for sale and can always supply you with the kind of animal needed.

His livery is equipped with good comfortable vehicles and careful drivers.

Horses boarded by the meal, day or month.

J. F. KING
near Five Poin

SCHOOL BOOKS.

THE COUNTY BOARD OF SCHOOL DIRECTORS HAVE APPOINTED THE

Reflector Book Store

As one of the depositories for Public School Books in Pitt County. We handle the books designated on the State List for the public schools and can supply whatever you need. We also have

COPY BOOKS,

slant and vertical, double ruled practice writing books, tablets, fool's cap paper, pens, pencils, slates, white crayons, colored crayons, inks, companion boxes, etc.

Some of Our School Specialties:

5 soapstone pencils 1 cent, 2 plain lead pencils 1 cent, 1 rubber tipped lead pencil 1 cent, a nice tablet with pretty cover 1 cent, 6 assorted crayons, with metal holder, in nice wood box 5 cents. Lead pencil, slate pencil, penholder and pen, and rule, all in nice wood box, 5 cents. A great big wide tablet 5 cents. Bottle of best ink on the market, 5 cents. Copy books 5 to 10 cents. White crayons, gross in box, 8 cents. Good fool's cap paper 10 cents per quire.

For the Business Man.

We carry a nice line of double and single entry ledgers, long day books, journals, counter books, memorandums, order books, receipts, draft and note books, time books, &c., &c.

For Society People.

We have all kinds and styles of box papers, card and envelope sets, visiting cards, note papers and tablets.

The Famous Parker Fountain Pen

Writes Right Every Time.

And when it comes to

JOB PRINTING

The Reflector Office Can't Be Beat.

COMETO USFOR ANYTHING IN

Books, Stationery & Printing.

SUBSCRIPTIONS TAKEN TO ALL

MAGAZINES.

R. L. DAVIS, PRESIDENT

R. A. TYSON, Vice-President.

J. L. LITTLE Cashier.

RE-ORGANIZED JUNE 15TH, 1896.

STATEMENT OF

BANK OF GREENVILLE

GREENVILLE, N. C.

AT THE CLOSE OF BUSINESS APRIL 26TH, 1900

Resources.

Liabilities.

Loans and Discounts : \$89,993.99	Capital stock paid in : \$23,000.00
Furniture and Fixtures : 1,928.85	Surplus and Undivided Profits less Expenses paid 9,762.36
Due from Banks and Bankers : : : 37,090.45	Deposits subject to check : : : 126,288.40
Cash Items : : : 1,970.25	Due to Banks : : : 510.45
Cash : : : : 30,516.73	Cashiers' chks outstanding 2,211.07
Rev. Stamps : : : : 272.01	
\$161,772.28	\$161,772.28

Careful attention given to business entrusted to us

NOW GUESS

What is the Population of Greenville?

June 1st the taking of the census will begin. THE REFLECTOR offers two prizes to persons who make the closest guess to the population of Greenville as shown by the census returns.

1st. A subscription to THE DAILY REFLECTOR for one year to the person among its subscribers making the best guess.

2nd. A subscription to THE EASTERN REFLECTOR for one year to the person among its subscribers making the best guess.

My Guess at the Population of Greenville is.....

Name.....

I am a subscriber to THE REFLECTOR
*write Daily or Eastern.

THE DAILY REFLECTOR

WEATHER BULLETIN

Fair tonight and Friday.
 Maximum 89
 Minimum 68
 Mean 78½
 Rainfall (24 hours to 6 p. m.) 0.00

HIGGS & TAFT'S LOCALS

Tables for any room.
 Pretty line toilet sets.
 Lounges and couches.
 Beautiful bed room suits.
 Photo pictures in colors.
 Lamps for hall or bed room.
 Buck's stoves for every body.
 John Kelly's shoes for ladies.
 French plate mirrors for parlors.
 100 rolls matting, carpet effects.
 Largest line of rugs in Greenville.
 Lace curtains, shades and poles.
 Rice & Hutchin's shoes for men.
 Dry goods and notions for every body.
 Combination cases for the sitting room.
 Buffets and sideboards for dining room.
 Laces and embroideries for ladies and children.
 Crescent and Monarch bicycles, 25 baby carriages.
 We can and will sell stoves and furniture at rock bottom prices. We buy these goods only in car lots, thus obtaining the lowest possible prices. Respectfully,



HIGGS & TAFT

J. B. Cherry & Co.

An Economical Buyer of Shoes



is the woman who recognizes the fact that it is true economy to purchase nothing but the highest grade shoes for her own wear, as well as for the children. We will fit mamma and the misses, as well as the boys and girls, with elegant, durable and comfortable shoes at prices that no one can touch, when quality is considered.

There's Great Comfort

a foot where our shoes are worn. They adjust themselves to what they cover so easily, yieldingly and coolly that they meet all the conditions of ideal foot wear. You walk into pleasure when you step into a pair of these stylish twins for the house and street. Soles, heels, points and uppers, all reflect the mode admirably.

COTTON MARKET.

As wired to Speight & Co., cotton and peanut buyers.
 New York future quotations to day are as follows:
 Opening. Close.
 July 8 33 8 36
 Aug. 8 09 8 12
 Oct. 7 67 7 64
 Dec. 7 52 7 50

Receipts 1,500.
LIVERPOOL.
 Opening. Close
 June & July. 4 50 4 48

CHICAGO MARKET.
 Opening. Close.
 Wheat—July. 68 69½
 Ribs—July. 6 70 6 82½

The Cut makes the fit,
The Fit makes the suit,
The Suit makes the man, so far as appearance goes.
 It is our pride that no expenditure is spared either in respect to material or workmanship.

High Art Tailoring

with our name, has identified us, Garments all made in our own work room under personal supervision.

Greenville Tailoring Co.,
 Main Street, Greenville N. C.

TAKING CENSUS.

The Reflector Enumerator's Daily List.

F. G. James spent the day in Bethel.
 I. Curtis Gary went to Plymouth this morning.
 W. T. Lipscomb left this morning for Richmond.
 Ex-Gov. T. Jarvis left this morning for Plymouth.
 M. H. Quinerly returned this morning from Kinston.
 Mrs. F. G. Whaley left this morning for Suffolk, Va.
 Mrs. H. A. Timberlake returned Wednesday from Bethel.
 Ernest Forbes left Wednesday afternoon for New Bern.
 Miss Nellie Lawrence left Wednesday afternoon for Kinston.
 Mrs. O. Outhrell returned to Kinston Wednesday afternoon.
 J. F. Joyner came over Wednesday evening from Kinston.
 Miss Alice Carson, of Bethel, is visiting Mrs. H. A. Timberlake.
 Joe Rawls returned this morning to the State farm at Tillery, N. C.
 Mrs. Lula Cleve returned Wednesday from a visit to Philadelphia.
 J. L. Starkey has moved into Mr. A. J. Griffin's house back of H. L. Coward's.
 W. H. Harrington returned Wednesday night from a trip up the road.
 Mrs. Ola Forbes left Wednesday afternoon for Grifton and returned this morning.
 Mrs. D. D. Gardner returned Wednesday from Hamilton, where she has been visiting relatives.
 Mrs. J. W. Goodwin and children, of Philadelphia, came Wednesday to visit Mrs. J. B. Cherry.
 Miss Sadie Abrams, of Rocky Mount, came Wednesday evening to visit the family of S. M. Schultz.
 G. T. Tyson left this morning for Richmond with a car load of cattle and sheep which he will see on the market.
 Rev. F. A. Bishop returned Wednesday from Durham where he has been attending the Trinity College commencement.
 Miss Donnie Wood after spending several days here visiting Miss Geneva Gardner, returned Wednesday to Kinston.
 H. A. White returned Wednesday evening from Wilmington, where he had been to attend the Ricks-Harris wedding.
 Miss Emma Harrington returned Wednesday from Wilson, where she has been attending school at Kinsey's Female Seminary.
 Miss Nannie Coward came Wednesday from Wilson, where she has been attending school at Kinsey's Female Seminary, to visit at H. L. Coward's.
 Andrew Moore and brothers Thomas and Thurman returned Wednesday from Bethel, where they have been attending the commencement exercises of the Bethel High School.

HEARD AND SEEN IN WASHINGTON.

WASHINGTON, N. C., June 6.
 Court week has not drawn much crowd.
 Potatoes are being shipped in considerable quantities from Aurora, and some from here. They do not appear to be matured well.
 The steamer Tar River is on the route from Aurora to Belhaven, the steamer New Berne has been taken to Virginia and the steamer Albemarle put on from Neuse river to Belhaven.
 Steamer Edgecombe is on the route Goose Creek Island to Belhaven, all potatoes.
 W. B. Dixon, late first officer of steamer Hatteras, is captain of steamer Tar River. Mr. W. Snell, late chief on the Edgecombe, is now on the Tar River.
 Mr. Parsons, late of the Tarboro,

is now on the Tar River.
 Mr. John Charles is first officer on Steamer Hatteras.
 John Spencer, late of the J. D. Patterson, is now engineer on the Edgecombe.
 The M E B A No 94 gave an ice cream social on the evening of the 2nd inst and it was a quite pleasant occasion.
 Rain is needed much.
 Much sickness in the vicinity of Vanceboro, and one or two deaths. Hotel Ponder, of Ocracoke, is no more, fire. Little saved. The "sky parlor" is a thing of the past.
 W. Albert's residence is completed and is one of, if not the finest in the town.
 Schooner Cora is loading lumber for Baltimore.
 Dr. M. L. Flynn is down the country on professional business.
 James Hancock, of Norfolk, brother of Mrs. E. M. Short, died on Friday and was buried on Tuesday at Oakdale Cemetery, Washington.
 A negro that persisted in abusing the team at one of the mills, in spite of repeated warning, will profit by his experience, and the liberal use of a buggy whip in the hand of the irate superintendent. The chase was lively but short.
 W. H. Wilkinson, of Leachville, was in town looking after the machinery of his new steamer.
 No cotton mill boom nor a prospective mill, but we will have one when—some one comes and builds it nolens volens.
 The census takers are busy and we will know all things when their reports are published—except the number of population, wealth of the county, number of persons employed in the various pursuits &c. &c.
 Mrs. Cliff Callis, of Memphis, Tenn., was here on Tuesday to be at the funeral of her father, Mr. Hancock. JIM NASTIC.

JAPANESE SILK.

WE HAVE A BEAUTIFUL LINE OF PLAIDS FOR

Waists

AND HAVE REDUCED THEM FROM OUR REGULAR

PRICE-- 60c per yard TO 43c per yard

it is your chance to get a handsome waist for a little money.

"Come Quick."

CS Forbes GREENVILLE N.C.

Staple and Fancy Goods

We are now in shape to meet all fair competition and supply all your needs. We buy

Flour, Sugar, Hay, Lime

and in fact all of the heavy goods in car lots, and will sell low for cash. Our

DRY GOODS STOCK

is more complete than ever before and prices not so high. Call and see us, we want to sell you. Remember we carry a full line of

Stoves and Stove Fixtures.

Our stock is complete in every department and we suit you in price and quality. Call and see us at Forbes' old stand. Your friends,

J. B. CHERRY & CO.

J. C. COBB & SON