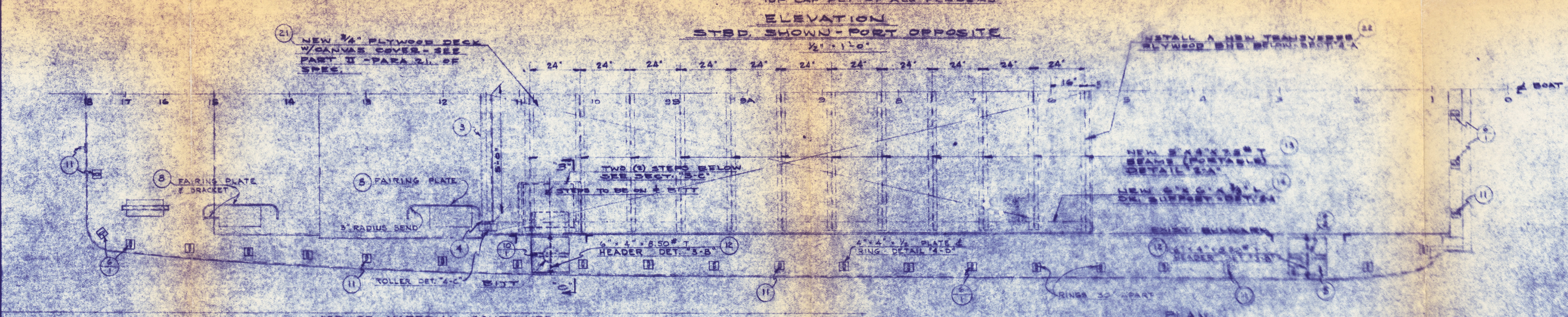
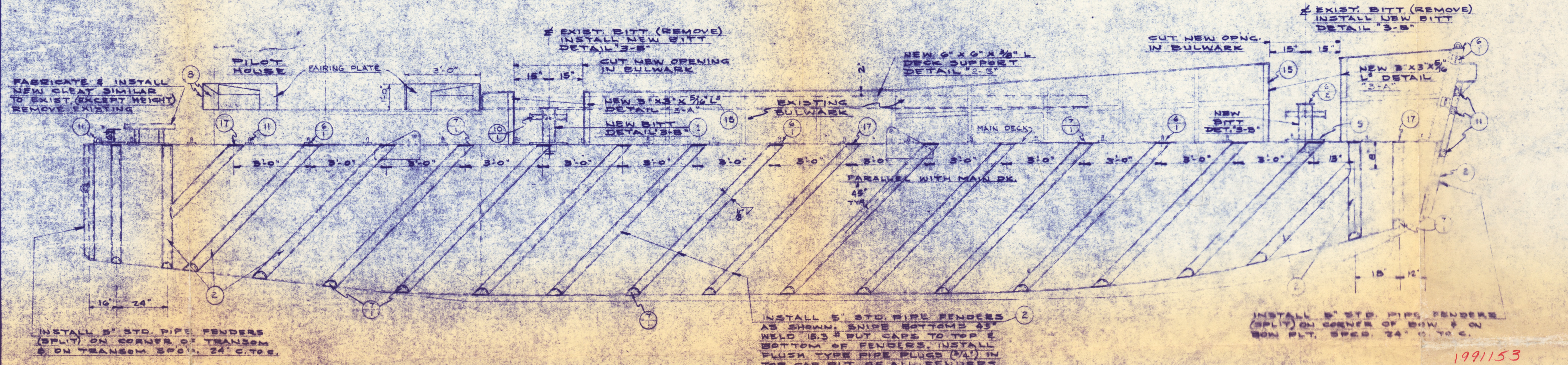
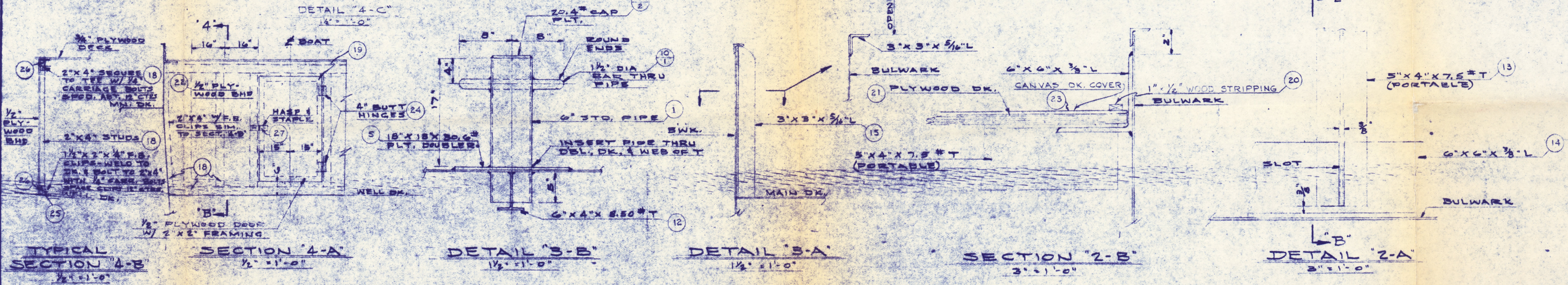
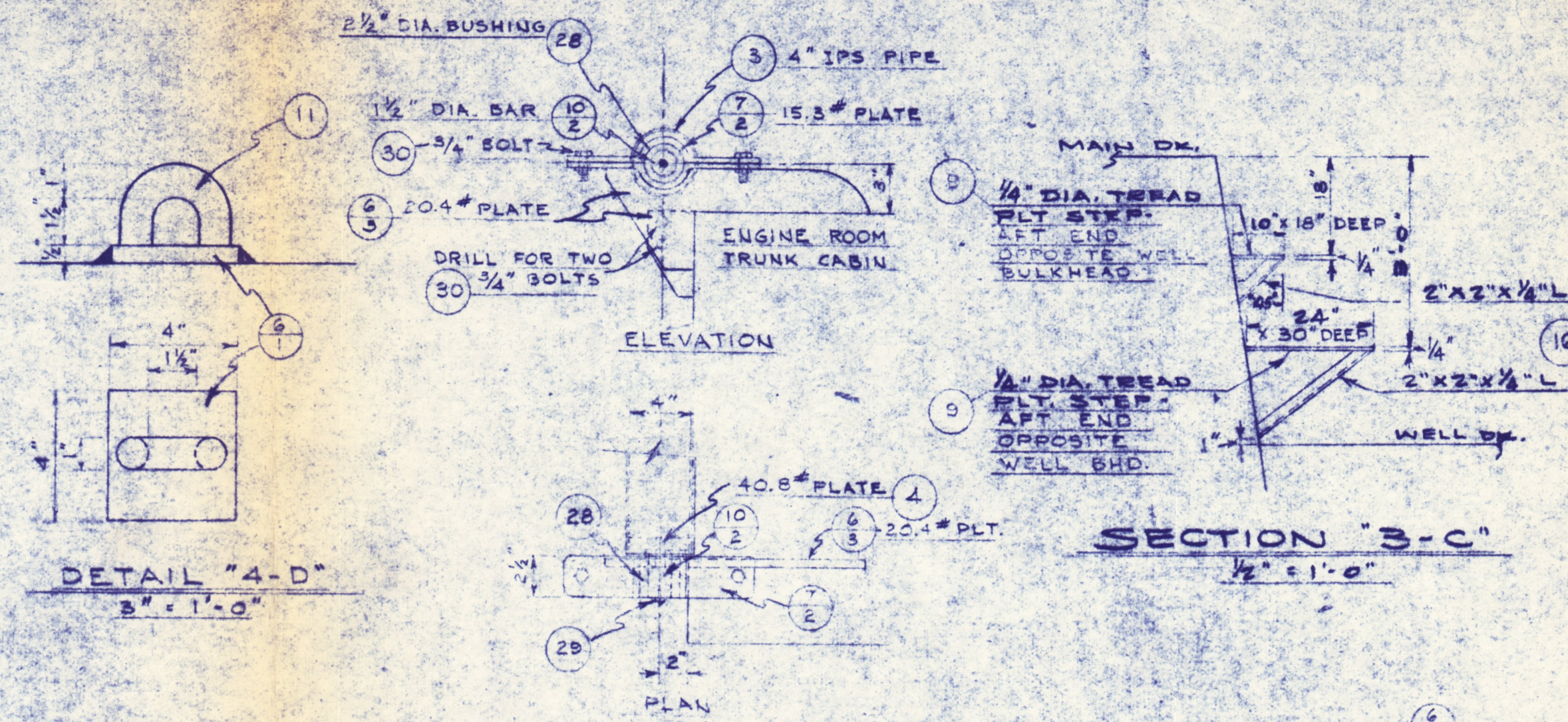


LIST OF MATERIAL - QUANTITIES FOR 1 BOAT

PIECE OR SYMBOL	NAME OF PIECE	QUANTITY	SERVICE	MATERIAL	MATERIAL SPECIFICATIONS	FEDERAL STOCK NUMBER	BUREAU DRAWING NUMBER	REV.	UNIT WT-LBS	REMARKS OR SERVICE	ZONE	LOCAL SHOP ROUTING
1	6" STD. PIPE	8'		M.S.								
2	5" STD. PIPE	190'								SPLIT		
3	4" IPS PIPE	10'										
4	40.8# PLATE	0.6 SQ. FT.										
5	30.6# PLATE	9 SQ. FT.										
6	20.4# PLATE	12 SQ. FT.										
7	15.3# PLATE	40 SQ. FT.										
8	10.2# PLATE	20 SQ. FT.										
9	1/4" DIAMOND TREAD PLATE	7 SQ. FT.										
10	1 1/2" DIA. BAR	7'										
11	1" DIA. BAR	55'										
12	6" x 4" x 8.5# T BEAM	6'		STEEL								
13	5" x 4" x 7.5# T BEAM	145'								PORTABLE		
14	6" x 6" x 3/8" L	48'										
15	5" x 3" x 3/8" L	22'										
16	2" x 2" x 1/4" L	8'										
17	3/4" FLUSH TYPE PIPE PLUG	45'								IN FENDER TOP CAP PLATES		
18	2" x 4" FRAMING	65'		Y.P.								
19	2" x 2" FRAMING	15'		Y.P.								

REVISIONS

REV.	ZONE	DESCRIPTION	SHIPYARD DATE	U.S.N. DATE



LIST OF MATERIAL CONTINUED

PIECE OR SYMBOL	NAME OF PIECE	QUANTITY	MATERIAL
20	1" x 1/2" WOOD STRIPPING	100'	WOOD
21	3/4" MARINE PLYWOOD	254 SQ. FT.	WOOD
22	24" x 12" DECK COVER	1	42 CANVAS
23	4" BUTT HINGES	2	STEEL
24	2" x 1 1/2" x 1/2" R.B. CLIPS	12	
25	1/2" CARRIAGE BOLTS	25	
26	HASP & STAPLE	1	
27	28" DIA. BUSHING	1	BRONZE
28	ALUMINUM FITTING	1	STEEL
29	3/4" BOLTS	3	STEEL

GENERAL NOTES
 1. TEMPLATE ALL WORK FROM BOAT
 2. ALL WELDS TO BE IN ACCORDANCE WITH GEN. SPEC. 59-1

199153

AS BUILT DRAWING

NUMBER OF APP. VESSEL	SHIPALY NUMBER	JOB ORDER NUMBER OR BUILDING YARD	DATE	APPRO.
CE-1556-1		COAST ENGINEERING CO. MARINE ARCHITECTS - MARINE ENGINEERS NORFOLK, VIRGINIA		
LCM (G) C-69660				
MISC. STRUCTURAL MODIFICATIONS				
BUREAU OF SHIP NUMBER				
LCM-6	145	E	199153	
SCALE: 1/4" = 1'-0" SHEET 1 OF 1				

C 76098

1991151

1991153

C-4