



















CAUTION
EMERGENCY ENTRANCE
CONTROL ON OTHER
SIDE

CAUTION
EJECTION SEAT
&
CANOPY

CAUTION
BEFORE OPERATING CONTROLS
CHECK TO BE SURE ALL ELECTRICAL
PLUGS AND/OR CONNECTIONS
ARE PROPERLY MATED AND
TO PREVENT DAMAGE TO WIRING AND

WARNING
THIS AIRCRAFT CONTAINS A
CANOPY REMOVER CONTAINING
AN EXPLOSIVE CHARGE
SEE T.O. 1-4-40-2-3
FOR COMPLETE INSTRUCTIONS

RUDDER PEDAL
CONTROL UNIT

CAUTION
PROBE TO BE HANDLED BY
AUTHORIZED PERSONNEL ONLY

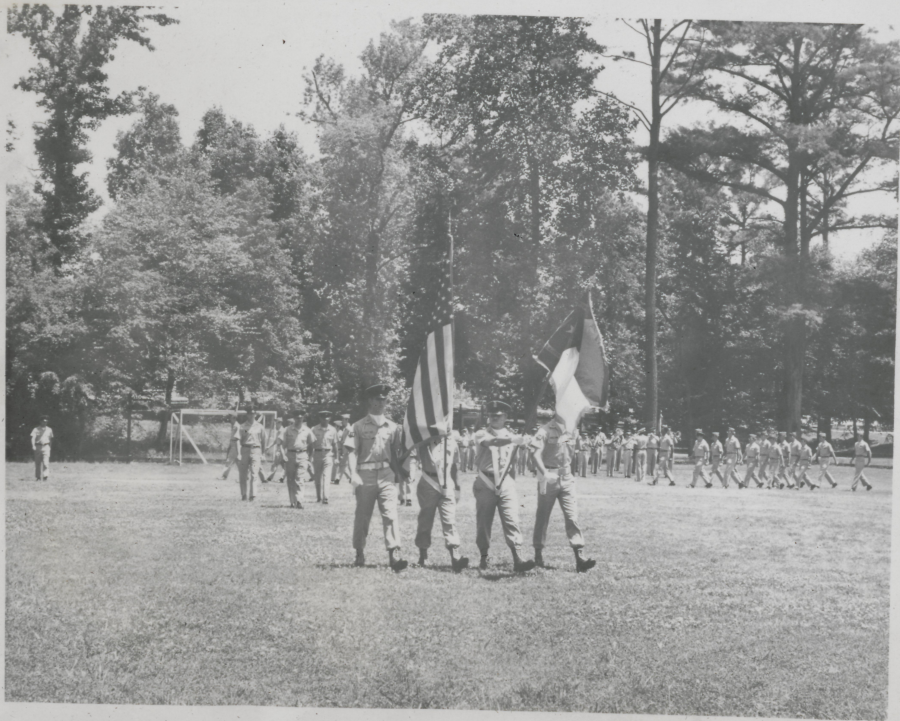
ANGLE OF ATTACK
TRANSMITTER
3 3
NO HAND HOLD

173
173
RAIN KNOCKVAL
VALVES &
GUN PURGE

9R
9R
CONSOLE
CAUTION LIGHT CONTROL UNIT

5R 5R









Capt. Charles E. Gries, a tactical fighter pilot from the 335th Tactical Fighter Squadron, addresses a group of cadets in a squadron briefing room. Captain Gries spoke about the duties of a tactical fighter pilot.

























336

RAKER

11 301 HAMILTON/DARLAND 0730 0730 0845 0912
12 294 DAVIS / JOHNSON
13 546 FRANTZ / BUCHANNA 0735 0735 0850 0906
14 288 FINCH / ESTABROOK

21 298 KAUFMAN / KONRAD 0820 0820 0920 0935 ACM W 123A
22 257 KNETS / DEBELLEVEU 0830 0730
23 286 YAROLEM / JOHNSON
24 258 BLAKE / LEWIS

31 287 MASGRAVE / ROONEY 1030 1150
32 261

41 301 ER 1230 1350
42 294 OR
43 546 MOOK
44 288 MD

50 257 1450 1635 INST

1700 FSND
1500

1750

145 MAR 20

41 291 BURGESS / CHAPMAN 0740 0740 0845 0912
42 382 PEARSON / NALES

51 221 ZUBE / MAC KAY 0735 0735 0835 0912 ACM W 123A
52 263 PITTARD / BLUM 0730 0730
53 269 SMITH / MURRAY

GILES / INKSTER 0740 0740 0845 0912

VARGAS / KOENIG 1050

DEFRATO / QUARS

BURNETT / BOWSER

5th PAGE / PUMPHREY

BURGESS / CHAPMAN

PEARSON / NALES

ACT
STA
EST
ACT
STA
EST
ACT
STA
EST
ACT
STA
EST
ACT



















