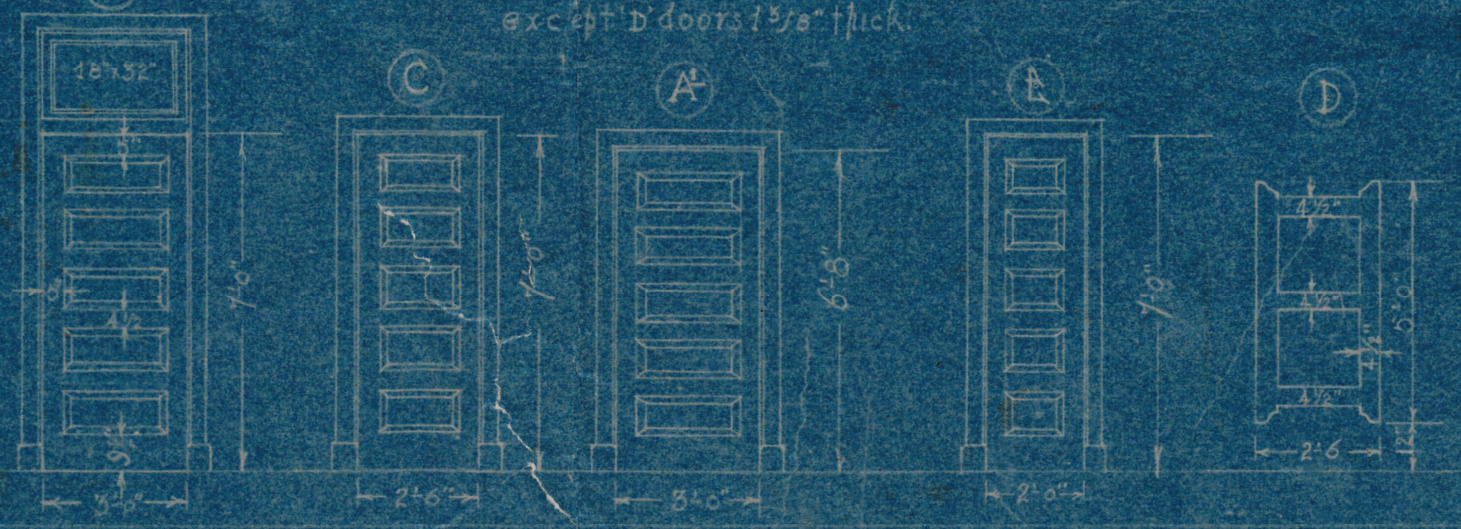


Note: All doors 1 3/4" thick except D doors 1 5/8" thick.



PLAN OF FIRST FLOOR
 Scale 1/8" = 1'-0"
 6" gypsum block partitions

REVISED - JULY 20, 1923 - R.E.S.

H. A. UNDERWOOD
 CONSULTING ENGINEER
 913-920 COMMERCIAL ST. BLDG.
 RAYMOND
 N. C.

LIBRARY BUILDING
 EAST CAROLINA TEACHERS COLLEGE
 GREENVILLE, N. C.

COMMISSION NO.
 SET NO. SHEET
 DRAWN BY A. J. BENEKE
 DATE - JUNE 12, 1923
 SCALE - 1/8" = 1'-0"

