

The East Carolinian

Serving the East Carolina campus community since 1925

Vol. 60 No. 10

Thursday, September 26, 1985

Greenville, N.C.

20 Pages

Circulation 12,000

Marchers Hear Faculty Speak

By ELIZABETH PAGE
Staff Writer

"Democracy, yes! Apartheid, no!" was the apparent theme of Wednesday's rally sponsored by Alpha Phi Alpha fraternity to protest apartheid.

ECU Students, faculty and Greenville residents, gathered to protest the South African policy. A march was also included in the rally beginning at Fletcher Music Building and ending at Mendenhall Student Center.

Protesters shouted, "Democracy, yes. Apartheid, no!" gathering a rather large group of supporters as they made their way to Mendenhall.

The main purpose of the march was to enlighten ECU students and faculty who really don't know what apartheid is, according to Anthony Bunch, president of Alpha Phi Alpha Fraternity.

Keynote speaker Rev. Arlee Griffin, pastor of Cornerstone Baptist Church in Greenville, openly denounced apartheid, saying, "it's time to denounce unequivocally the Reagan administration's policy of constructive engagement" in South Africa. "No longer will the world tolerate the brutality and

madness that runs rampant in South Africa," added Griffin.

Griffin also quoted Martin Luther King Jr. saying "an injustice anywhere is a threat to justice everywhere."

A crowd of nearly 250 people responded with great enthusiasm, interrupting Griffin's speech with applause several times.

"People need to be educated as far as apartheid is concerned," said Sue Haynie, a junior majoring in psychology, "and this protest rally is a perfect opportunity to gain knowledge of it."

Several ECU administrators spoke out against apartheid at the rally. Vice-Chancellor for Academic Affairs Dr. Angelo Volpe called the rally a "fine way for students to be expressing their opinions and a sensation whose time is overdue."

Vice-Chancellor for Student Life Elmer Meyer also spoke at the rally, painfully remembering times in his own life when he saw his own black friends be the subject of racial prejudice.

"You know and your parents know some of the things that occurred in this country which have similarities to what has been go-

See FACULTY, Page 3



Apartheid Marchers

JIM LEUTGENS — The East Carolinian

Hundreds of ECU students turned out Monday to protest against U.S. sanctions in South Africa. The march, sponsored by Alpha Phi Alpha, began at the School of Music and ended at Mendenhall. Faculty members, including Vice Chancellor for Student Life

Elmer Meyer and Associate Dean and Director for Student Services Ronald Speier, told the crowd that America does not need to fight another racial issue again, especially not supporting one in another country.

Gloria Approaches N.C. Coast

By MIKE LUDWICK
From Staff & Wire Reports

"What we are looking at here is possible major to severe damage in Pitt County, as large as the storm is, if it should come ashore here," said Bobby Joyner, director of Pitt County Emergency Management. "Anything can happen. Pitt County is currently looking at its emergency management plans, but we're waiting to see what it (Gloria) will do," added Joyner.

Hurricane Gloria, one of the fiercest Atlantic storms of the century, held a steady course

Wednesday night that aimed its 150 mph winds at the Carolinas, where forecasters said they may order hurricane warning early Thursday.

Spewing gales of 40 mph along a 350-mile front and slinging hurricane force winds of 75 mph and up over a 125 mile front was expected to gradually turn from a northwest track to a more northerly course. However, forecasters reported in midafternoon the course change was delayed.

A hurricane watch was posted in midafternoon from Edisto

Beach, just south of Charleston, S.C., northward to Cape Henry, V.A.

Hurricane force winds of 75 mph or higher covered a radius of 75 miles in the northern quadrants from the center and 50 miles in the southern quadrants. The center of the storm is 25 miles wide. An Air Force plane flying in the storm found wind gusts in excess of 170 mph.

According to UPI reports, Neil Frank, director of the National Hurricane Center in Miami, said, "If it maintains its strength, it certainly has a potential storm

surge of 10 feet. It could be as strong as 15 feet."

Frank explained that ratio of damage potential increases rapidly as the sustained winds of a hurricane increase.

"When you go from 110 miles an hour, like a Category 3, to 150 miles an hour, it just isn't a 50 percent increase in destruction. You have doubled the destruction," Frank said. "So anytime you get an increase of 10 to 15 mph in winds you really get an increase in the impact in the amount of destruction."

ECU Program Top

By DOUG ROBERSON
Staff Writer

ECU is in the forefront of the expanding use of technology in education, said Dr. Cobel, Dean of the School of Education.

A program started by the School of Education's Rural Education Institute is bringing physics classes to five high school in coastal North Carolina via interactive broadcasting.

"We have a teacher that goes to five high schools throughout Beaufort and Hyde Counties. He drives a van that is equipped to transmit the class he is teaching to the other four schools," said Cobel.

He added, "He teaches one day a week at each school—this

gives the students a chance to see their teacher in person, as well as on television the rest of the week."

Cobel said the University is using the "most contemporary technology" to teach technology. This is among the first interactive systems in the country. Right now the voice is carried via telephone lines. We hope to have both the audio and visual transmitted by satellite in the near future.

John Spagnolo, a 1985 science education graduate from ECU, is teaching the physics course. The system allows students to ask him question in any of the five locations.

See EDUCATION, Page 13

Student, Resident Rapport Needed

By DOUG ROBERSON
Staff Writer

Co-operation among students, local residents, and police is essential in dealing with the variety of traffic problems around ECU, said Greenville Police Chief Ted Holmes.

"In the area around 10th Street and College Hill Drive and along 5th Street, there's a tremendous amount of pedestrian traffic. Officers patrol these areas regularly — we can't allow speeding because of the dangers involved," Holmes said.

The Greenville Police Department reported that 7105 tickets were issued last year. "These were predominately speeding tickets, but it's not a large number when you consider there were over 2100 accidents and 450 injuries in Greenville last year," he said.

Holmes added that people not familiar with the pedestrian and traffic congestion around campus WERE responsible for many of the speeding violations. "We find that ECU students know the hazards of the area and realize speeding is dangerous," he said.

"People don't go out and say 'I'm going to speed,'" Holmes said, "It's usually caused by inattention or bad judgement."

Holmes emphasized the department's recognition of the "potentially high price" students must pay for a speeding ticket.

"We don't like to give students a ticket. If you take the court costs, add the fine, and then add the fact that their insurance rates may go up—there's a potential for a pretty expensive price for an error we all make," he said.

Another major concern of the department is motorists who drink and drive. "From an age standpoint, white males ages 21 to 25 are the problem. Over 50 percent of our DWI arrest (1984) came from this group," Holmes

said. "Most students don't fall into this category—they're not an out of proportion drunk driving problem," he added.

Holmes praised students and University officials for the effort both have made in reducing the drunk driving problem. "The students and University have been very helpful. Students are riding the bus or walking home, rather than drinking after going downtown."

Another method of reducing the number of drunk drivers is the DWI roadblock. "We have a \$50,000 grant that has been recently renewed. As a part of

this, we will be having DWI roadblocks again this year," Holmes said.

Parking on city streets around campus is also an area of concern for students, as well as residents and police.

"We realize there is a parking problem for students. There are two basic problems the department worries about. One is students who park in 'No Parking' zones or driveways. The other is parking in areas designated 'Residential Parking,'" Holmes said.

He added that students who park near intersections are

creating a traffic hazard.

The residential parking zones were created in 1981 as an effort to reduce the number of non-residents parking in front of houses near the University.

According to the ordinance, a resident may purchase one parking decal for each car he owns. Vehicles without permit are limited to 2-hour parking in the following areas:

E 4th St. between Biltmore and Summit
Jarvis St. between 3rd and 5th St.
Harding St. between 4th and 5th St.

See PARKING, Page 13

WZMB Offers New Radio Show

By HAROLD JOYNER
Co-News Editor

To make the campus and community more aware of ECU's radio station, a new, informative and up-to-date news show is offered each week on your FM dial, 91.3.

"Rewind" is the brainchild of WZMB's News Director Warren Baker, and he said the concept of the month-old program is to provide the listeners with a news capsule of the preceding week.

The program is divided into four segments, which consist of international and national affairs; state, local and campus news; special reports; and interviews with campus personalities.

"I basically select the topics," Baker said. "And with the help of newscasters Sheila Davis (Price) and Jeff Chester, we manage to put together a well-produced show."

"This show is just an example of my personal pledge to make WZMB and its news department more visible to the campus and the community," Baker said.

WZMB has tried to present news-type capsules before, but

Baker said they were unsuccessful because of listeners' short attention span. "Our 30-minute show has two, five-minute newscasts, 15 minutes of an interview and a 15-minute special report," he said.

So far, "Rewind" has featured SGA President David Brown, Greenville Mayor Janice Buck, Economics Professor Brian Dollery and Media Board Chairman Mark Simon.

Special "Rewind" reports have included President Ronald Reagan's visit to Raleigh and Wednesday's apartheid march at ECU. A report on N.C. Governor James Martin's visit to Greenville today will also be aired next Sunday.

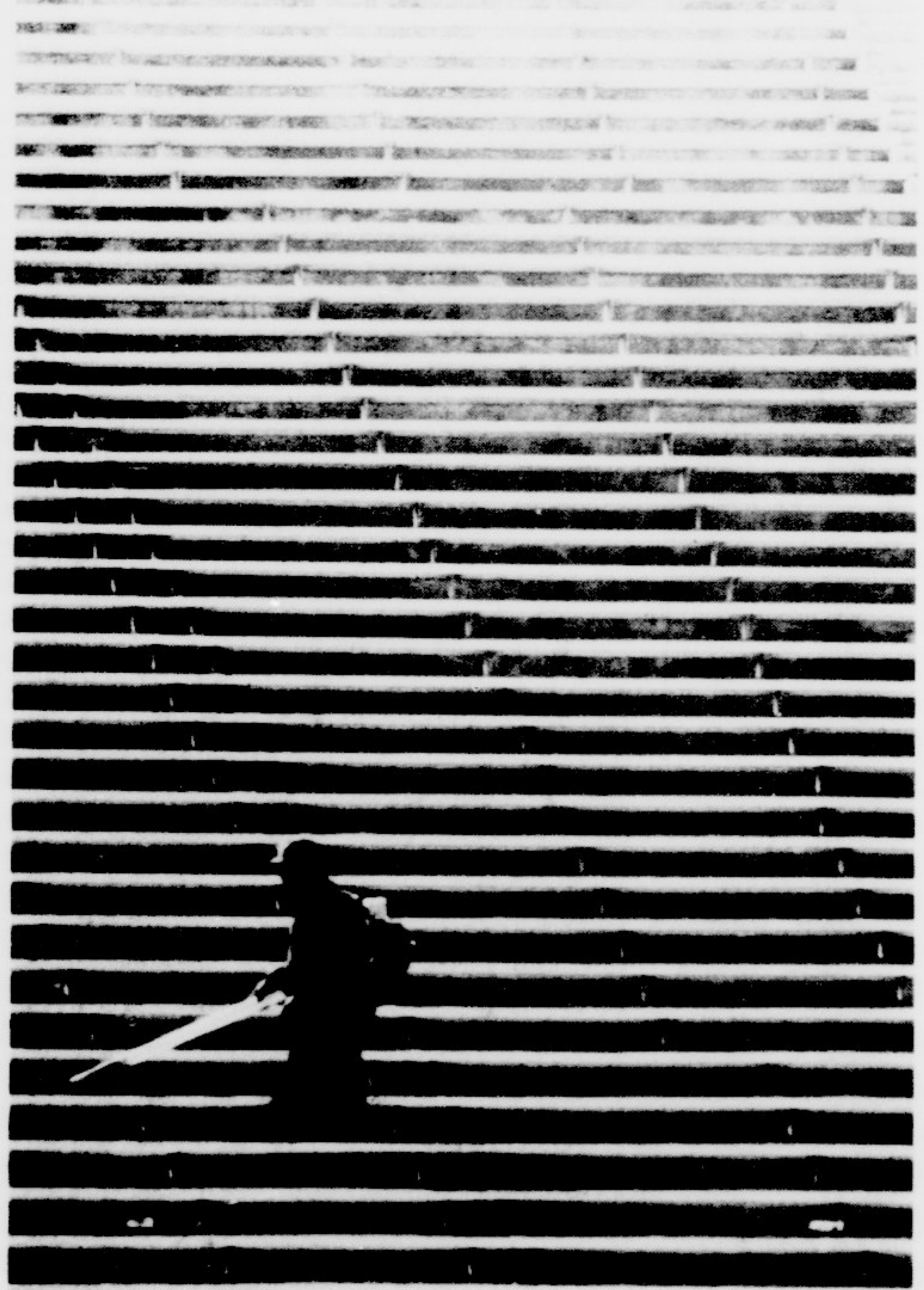
"A student should be able to turn his radio on to 'Rewind' and get an update on last week's news. Except for the interviews, everything is real short and to the point," he said. "We never designed the program to give an in-depth view of the news — just what happened last week."

Several investigative reports are scheduled, Baker said, but he would not disclose any details.

Ideas for the interviews, as well as general input about the show, can come from the students, Baker said. "If anyone has any ideas, suggestions or criticisms, they are welcome to stop by the radio station anytime during regular office hours."

"We want to make the station more visible and to get more students involved in WZMB. We care about what goes on campus," Baker said.

The show airs every Sunday at 2:30 p.m.



Clean Up JIM LEUTGENS — The East Carolinian

ECU is putting on the ritz this weekend for all the visiting parents, who'll slowly make their appearance on campus tomorrow. Although we've been told ECU will operate as usual this weekend — no special put-ons for the parents, except for the planned shows — we suspect the students will be on their best behavior anyway.

On The Inside

| | |
|----------------------|----|
| Announcements | 2 |
| Classifieds | 16 |
| Editorials | 4 |
| Parent's Day Weekend | 5 |
| Features | 7 |
| Sports | 17 |

•The East Carolinian proudly welcomes all visiting parents this weekend with a special section. For more information, see page 5.

Announcements

PSI CHI
 Become involved. Join Psi Chi. It's a great way to have fun, meet people, and show your academic achievement. Applications are in the Psi Chi mailbox and will be accepted until Oct. 31.

ZETA PHI BETA
 The ladies of Zeta Phi Beta would like to invite all other interested ladies to attend our Fall Formal. The rush will be held in the Cultural Center at 8 p.m. on Thursday, September 26. Come and see what true sisterhood is all about.

SPIRIT CONTEST
 Spirit Contest at Cobblets. Monday, Sept. 30th at 8 p.m. \$25 cash prize. Break out the Purple and Gold!

ECU SURFING
 The surf team will be traveling to Wilmington this Saturday to compete against UNC-W. The contest starts at 9 a.m. and the van leaves from Memorial Gym at 8 a.m. This means to crash early on Friday night. The next club meeting will be next Thursday, Oct. 3rd at 8 p.m. in room 221 Mendenhall. A video of the contest will be shown and plans will be made for the Fall Break trip to Hatteras which is open to all club members. Club dues must be paid by team members before they complete this Saturday.

TICKETS FOR MIAMI GAME
 Student tickets for the Miami game go on sale Tues. Wed. Thurs. Oct. 1-3. They are available at Minges Col. Ticket Office between 8:30 and 4:30 and are also available at the Memorial Student Center on the same days between 11 a.m. - 5 p.m. Students need their ECU ID and activity cards.

PPHA
 Pre-Professional Health Alliance, a nonprofit pre-health organization, will hold a meeting tonight at 8 p.m. at the Cultural Center. All members and guests are encouraged to attend.

OMEGA PSI PHI
 Come out and party with Omega Psi Phi. Sat. Oct. 26th at the Memorial Student Center. Don't miss out on our Achievement Week program which will go on until Oct. 31st.

SCUBA DIVING ADVENTURES
 Dive Bonaire. Nov. 27th. Eight day seven night trip. Includes air fare from Raleigh, lodging, two meals daily, and unlimited beach, boat, and night diving. For more information call Ray Scharf, Director of Aquatics, 757-6441.

S.A.M.
 Our next meeting is Wed. October 2 at 3 p.m. in Room 101. Furrey James from the Career Planning and Placement Center and Donald Rose from Burlington Industries will speak on careers, recruiting and job interviews. Everyone is invited.

ECU AMBASSADORS
 Congratulations New Ambassadors. We're really excited about this year's events and having you with us. Please come join us at our general meeting on Oct. 2 at 5:15 p.m. in Mendenhall's Multi-Purpose Room. Old members left show them why we're the greatest organization on campus.

INTRAMURAL REPRESENTATIVES MEETING
 All intramural representatives must attend this meeting. Anyone interested is welcome and invited to attend 5 p.m. in room 103. Brewster C. 103 is the place and Wednesday, Sept. 28 is the day.

PHI ETA SIGMA
 Phi Eta Sigma will have an organizational meeting Sept. 29 at 5:15 p.m. in 221 Mendenhall. All members old and new are asked to attend. If further questions call Jack at 752-1081 or Dr. Ebbs.

KAPPA SWEETHEARTS
 The Kappa Alpha Psi Sweethearts will be sponsoring a book sale on Wed. Sept. 25 in front of the bookstore.

MOVIE NIGHT
 This Sunday and every Sunday night at 7 p.m. enjoy a thought-provoking movie and a light snack. Free of charge. This week: "Kramer vs. Kramer" with James Dean. Discussion afterwards. Call 758-2030 for more information. Sponsored by Presbyterian and Methodist Campus Ministries.

LOOKING FOR A PART TIME JOB?
 We have a wide variety of possibilities for ECU Students. Call the Methodist Student Center at 758-2030 on Mon. or Wed. afternoons for more information.

STUDY REVELATIONS
 Join us Thursday, Sept. 26 at 7:00 p.m. in Mendenhall for an exciting in-depth study of the Book of Revelations. The King Youth Fellowship Bible Study invites all members and welcomes new members to attend. Contact Jack at 752-1081 or Kevin at 758-5130 for more information.

NEW LEGISLATORS
 All the new members of the SGA Legislators are invited to attend an orientation session. Mon. at 4 p.m. in 221 Mendenhall. Any group that is interested in finding out how the Legislature works is also encouraged to attend.

RHO EPSILON
 The Real Estate club, Rho Epsilon, will meet on Wednesday, Oct. 2 in Room 103 at 4 p.m. Guest speaker will be Real Estate Broker and ECU Graduate, Coby Heath. An organizational meeting will be held afterwards. All interested students are invited to attend.

N.C. EMPLOYMENT SECURITY COMMISSION
 Representatives from the Greenville office of the N.C. Employment Security Commission will be on campus Thursday, Oct. 3 from 9 a.m. to 4 p.m. at the Student Supply Store to recruit students who are interested in part-time jobs available through Employment Security.

VETERANS CLUB
 Our second meeting of the semester will be held Thurs. Oct. 3 at 7:30 p.m. in the Coffee House (downstairs) at Mendenhall. A few of the topics on the agenda will be Veterans Day activities, a possible Veterans Awareness Day, and the development of the club constitution which will include the discussion of the organization's purpose. Basically, this meeting will be a brainstorming session and will give you an opportunity to offer ideas and concerns. Membership is open to students, faculty, and staff who are veterans, military, personnel, veterans dependents, and reservists. Come out and enjoy the fellowship. Refreshments will be provided.

Art Majors Commercial or Otherwise
 Experience the field of commercial art and GET PAID for it! The East Carolinian has one opening for an advertising layout/pasteup artist. Experience helpful but not necessary. If you are interested, stop by 2nd floor Publications Bldg. Mon-Fri 8-5.
 The East Carolinian is an equal opportunity employer M/F/V/H.

Parent's Day Is This Weekend!



"A Complete Meal On A Bun"
NOTICE
 WE REGRET TO INFORM YOU THAT AS OF SUN., SEPT. 29th WE MUST CHARGE \$1.00 FOR ALL DELIVERIES.

CLIP COUPON
 With Coupon Receive
\$1.00 off our No. 19 SUPER SPECIAL
 (cheese, ham, turkey, bologna, capicola, salami, pepperoni)
COME AND GET IT SPECIAL!
 (In store special only) Exp. Oct. 3, 1985
 CLIP COUPON
 215 E. 4th St. Corner of 4th & Reade
752-2183

Cable & Craft
 1212 E. 4th St. - Greensboro, NC
 YARN, BASKET SUPPLIES, FURNITURE
 Mon.-Fri. 12:30-5:00
 Sat. 10:00-3:00

4th Anniversary SALE!

Shetland Wool Sweaters
 Brody's own 100% shetland wool sweaters, with hand-linked crewneck, saddle shoulder and 2x2 ribbed neck, cuffs and waistband. Sizes S, M, L, XL. Reg. \$28.00.
Anniversary Special \$21.99

Duckhead Trousers
 Khakis are a staple in any wardrobe! 100% cotton trousers feature belted plain front and are available in khaki, navy, olive and grey. Reg. \$22.00.
Anniversary Special \$17.88

"Dirty Bucs"
 The finest material fashioned into shoes, where good looks and quality make them first choice among men everywhere! Reg. \$58.00.
Anniversary Special \$47.90
 like no other men's store...
brody's
 The Plaza for men

Ellie's Clothing Store
 2800 East 10th St. Near J.D. Dawsons
 Ladies Fashion & Men's Wear
SPECIAL GRAND OPENING BARGAINS ON Ladies Sweaters & Jeans and Men's Jackets
 We stock Jordache, Lee, Chic, Calvin Klein and Sasson Jeans.
ECU ID 10% OFF

Kroger Sav-on FOOTBALL 85
 Register To WIN A PAIR OF Pirate Football Tickets
 Kroger will give away 2 pairs of Tickets For Each of the 5 home games REGISTER EVERY WEEK

Coors Beer 6 \$2.29
Wine Cooler 4 \$2.99
Golden Bananas 25¢
Coca Cola 2 99¢
Orange Juice 99¢
Bucket Of Shrimp \$2.99
Ice Cream \$1.99

Amchair Theatre Video Movie Rentals
 No Club Fees 24 Hour Service
99¢
VHS Player Rental \$2.99
OVER 650 TITLES BETA & VHS
OPEN 24 HOURS EVERYDAY
 600 Greenville Blvd. - Greenville

Official Faculty
 WASHINGTON, D.C. (AP) — While the government keeps digging a hole, draft resisters...
 East Carolina
 10th & Du...
WE BUY CO INSTANT C
 All Transac...
BUY-SAL
 752
 Hours: 9:00 am

★ 25¢
 ★ Spai
 ★ Lat
 ★ Pet
 ★ Do
 ★ Shi
 ★ At
 ★ Ba
 ★ 50¢
 ★ The Breeze B
 ★ Ladies Admit
 ★ Bring Your E
 ★ 50¢ Wine All
Last Nite For
\$2.00 Off
 Present C
 The Admission Price C
 Only Friday, September

Officials Crackdown On Draft Resisters

WASHINGTON, D.C. (CPS) — While the government keeps dogging collegiate draft resisters, campus financial aid officers say fall, 1985 — the time they were to be enlisted formally in the effort to chase resisters — isn't the administrative nightmare they once expected it to be.

Last week, a Los Angeles judge sentenced David Wayte, a former Yale student who publicly refused to sign military registration forms, to six months of house arrest.

But college financial aid officers no longer have to help the government punish resisters, according to regulations that went into effect this fall.

Under a 1982 law — popularly called the Solomon Amendment — students must register for the draft in order to get financial aid.

To enforce the law, the U.S. Department of Education in 1983 said that, starting in fall, 1985, college aid officers would have to verify if students were telling the truth when they claimed to be

registered, and then would have to deny aid to those who lied.

University officials forecast massive administrative bottlenecks complained the government was making them do something they weren't equipped to do.

Federal officials have "no idea of the administrative problems it will cause," one financial aid official said at the time. "Validating each one of those students will be very difficult."

But this fall, when all the problems were to begin, aid officers say the verification regulation has been watered down, and is no longer much of a concern.

Education officials agreed to let aid officers off the hook after they sampled student responses to the draft registration query on aid applications, and determined 90 to 95 percent of students were telling the truth.

In addition, the forms no longer are required of female students or any other students who don't have to register for the

draft. Students now only have to fill them out once while enrolled at a school, rather than once every academic year.

Dennis Martin of the National Association for Financial Aid Administrators says he endorses the revised requirement.

No association members have complained about the work necessitated by the revised regulation he says.

But government efforts to chase resisters continue.

Hatter stopped Wayte's community service, a frequent sentence for other convicted resisters over the last few years, precisely because Wayte already works as a volunteer at a school and a soup kitchen in Pasadena.

Last week, U.S. District Judge Terry Hatter sentenced former Yale student to six months of house arrest, and barred him from performing any community service for the same period.

Faculty Speak To Marchers

Continued From Page 1

ing on in South Africa for years," said Meyer, "that is why the situation in South Africa needs change."

SGA President David Brown also remembered a time when he was a witness to the racial prejudices of the American South.

According to Brown, our laws have been ignorant in the past, but we've changed those, and we're continuing to change those laws, and it's time for us to educate other parts of the world as to our values.

Even though many of the

U.S.'s precious metals come from South Africa, Brown said, "we should not substitute dollars for freedom."

"Apartheid is racial injustice, it's a not so subtle form of slavery, and it's tyranny pure and simple," said Volpe, who referred to South Africa as having rulers and not leaders.

"Abolition of apartheid is an idea whose time has come, and I think we all know that there is no greater force than an idea whose time has come," said Volpe. "Apartheid squanders our most precious resource — humankind," added Volpe.

"Our country has fought this issue once before, and we should not support the same thing in another country," said Associate Dean and Director of Student Services Dr. Ronald Speier in a telephone interview.

A political science student who wished to be anonymous said that even though he was against apartheid, he was against the rally itself. He suggested that the rally be held somewhere in Greenville instead of ECU's campus.

Pirate Fever



Personalized Beverage Hats

- ** Make a spectacle of yourself!
- ** Hats can be personalized with your Greek letters or name.

Get The Fever! Call Today!

Jefferson's

720 W. 10th Street, Greenville, NC 27834
752-2186

EL TORO

Men's Hair Styling

JOHNNY WEATHERSTON 2800 E. Tenth St. Greenville, N.C. 27834
Phone 752-3316

East Carolina Coins & Pawn

10th & Dickinson Ave.

WE BUY GOLD & SILVER
INSTANT CASH LOANS

All Transactions Confidential
BUY—SALE—TRADE
752-0322

Hours: 9:00 am-4:00 pm Mon.-Sat.
Street Television Camera Sales Musical Inst. 35mm Cameras Bicycles

TW'S NITELIFE

264 Bypass Northeast
Greenville, North Carolina

Presents

Thursday Nite

- ★ 25¢ Draft All Nite
- ★ Spark Plugs Playing Your Favorite Tunes
- ★ Ladies Admitted Free All Nite!

Friday Nite

Ladies Nite Out!

- ★ Peter Adonis Show
- ★ Doors Open 6:30 Ladies Show
- ★ Show 7:00-9:30
- ★ At 9:30 PRE-GAME PARTY with
- ★ Band Of Oz Bringing you the Best in Beach.
- ★ 50¢ Draft All Nite

Saturday Nite

Victory Party

- ★ The Breeze Band Plays Your Favorite Beach and Top 40 Tunes
- ★ Ladies Admitted For \$2.00 Til 11:00
- ★ Bring Your ECU Ticket Stub and Get \$1.00 off the Admission
- ★ 50¢ Wine All Nite

Last Nite For \$2.00 Membership Special.

\$2.00 Present Coupon Off

The Admission Price Good Only Friday, September 27th

Call 758-5570 for a FREE RIDE to on the Liberty Ride



Private Club • All ABC Permits

RIVERSIDE



STEAK BAR

315 Stantonsburg Road

Across From Hospital

Greenville's Most Unique Restaurant

Largest Steaks In Town USDA Aged Choice Beef

You Cook!! We Cook!!

10 Ft. Live Charcoal Grill

| | |
|---------------------|-------------------------------------|
| 24 Oz. T Bone | you cook \$10.95 we cook \$12.95 |
| 24 Oz. Sirloin | you cook \$10.95 we cook \$12.95 |
| 15 Oz. Rib Eye | you cook \$10.95 we cook \$12.95 |
| 15 Oz. Sirloin | you cook \$10.95 we cook \$12.95 |
| 12 Oz. Filet Mignon | you cook \$10.95 we cook \$12.95 |

Smaller or Larger Cuts Available

Compare Our Prices Compare Our Quality

We're Sure You'll Be Back

Lunch Buffet M-F

11-2:00

5 meats — 6 Veg. Daily

Salad Bar

All You Can Eat \$3.75

Fri & Sat Special

10 Oz. Sirloin

\$6.99

Prime Rib (All You Can Eat)

\$10.99

All ABC Permits

Owned & Operated by Riverside Oyster Bar

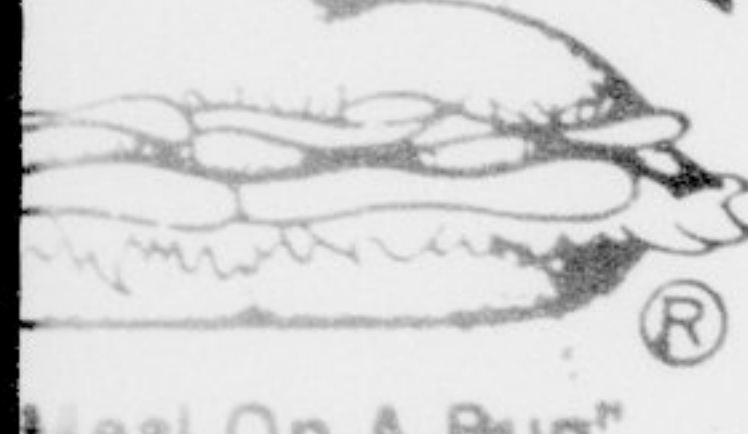
Hours Lunch M-F 11-2

Dinner Tues-Sat 6-10:30

752-5001

Day Is Weekend!

ATION II



Deal On A Bun!

TICE

INFORM YOU THAT
T. 29th WE MUST
ALL DELIVERIES.

COUPON
on Receive

off our

.19

PER

SIAL

ET IT SPECIAL!

Exp. Oct. 3, 1985

COUPON

Corner of 4th & Reade

2183

BALL
85



Potato Chips

89¢

Deli Dips

1 LB. GET 1 LB. FREE!



\$1.99

The East Carolinian

Serving the East Carolina campus community since 1925

TOM NORTON, General Manager
JAY STONE, Managing Editor

HAROLD JOYNER, Co-News Editor
DANIEL MAURER, Features Editor
RICK McCORMAC, Co-Sports Editor
SCOTT COOPER, Co-Sports Editor
DEBBIE STEVENS, Secretary
LORIN PASQUAL, Entertainment Editor
DeCHANILE JOHNSON, Ad Technician

TOM LUVENDER, Director of Advertising
ANTHONY MARTIN, Business Manager
JOHN PETERSON, Credit Manager
SHANNON SHORT, Production Manager
ANDREW JOYNER, Copy Editor
MIKE LUDWICK, Co-News Editor
STEPHEN SHERBIN, Lifestyle Editor

September 26, 1984

OPINION

Page 4

Apartheid

Students March In Protest

It is a land where blacks are not allowed to vote for government officials or hold public office. It is a place where blacks make up 72 percent of the population, but most are forced to live on only 13 percent of the available land and this land is the poorest and most desolate in the country. According to the British documentary "The Last Grave in Dimbazi", only blacks who can work are allowed to leave this land that they are confined to called Bantustans, and even then they are forced to carry a pass issued by the government. If blacks are caught without passes they go to jail and, according to Amnesty International, are frequently tortured. Blacks are paid much less than whites. While black workers, comprising 71 percent of the labor force, earn about 29.4 percent of total wages. White workers, making up only 18 percent of the workforce, make approximately 58.7 percent of the total wages of the labor force. In the area of health care the picture is no different. In 1980, the infant mortality rates per 1000 births were 13 for whites and 90 for blacks. Perhaps this is partially a result of the fact that, while there is one doctor for every 330 whites there is only one doctor for every 19,000 blacks.

The picture that emerges is clear: blacks are exploited as a cheap and plentiful labor force by a white minority which denies them anything approaching an equitable share in the fruits of their labor. The whites profit from this arrangement while the blacks are forced to suffer under it.

Yet, signs of impending change are in the air. Yesterday's apartheid awareness march involving nearly 200 ECU students and some Greenville residents unleashed a political energy not seen on this campus for many years. More to the point, it was a clear message from a substantial block of the student body whose voice rose above the deafening silence which usually prevails here to shout: "Democracy yes, apartheid no!" A more eloquent and appropriate statement could not have been uttered. For democracy must come to South Africa.

Yet, we must ask ourselves what tangible steps can be taken on the part of students at this university in the final analysis. Certainly divestment is a tangible blow that can be struck against apartheid. ECU, however, has invested none of its endowment fund in corporate stock. Thus, it is not invested in corporations doing business in South Africa.

Other universities in the UNC system are invested in South Africa.

Parents...

ECU is planning to role out the red carpet for parent's this weekend when it anticipates that in excess of 2,000 parents of students will attend the school's first annual Parent's Weekend. Parents will be treated to free movies, a picnic lunch on the mall with entertainment by the ECU Show Choir, open house at residence halls, a reception at the home of Chancellor and Mrs. John M. Howell, the football game on Saturday and still more.

Parents will also get a special edition of the student newspaper, The

in this manner. Predominantly black Fayetteville State University ironically has invested 1.14 million dollars in five companies doing business in South Africa. UNC-Wilmington has \$510,000 worth of stock in 11 companies with large South African investments. Appalachian State has \$894,100 in 15 companies. UNC Greensboro has \$822,819 — a fifth of its total holdings — in these corporations. NC State has over \$1.3 million and UNC-Chapel Hill has \$5.3 million in endowment funds in corporations doing business in South Africa. There are pro-divestment movements at several of these universities.

While endowment of our university is not invested in South Africa, part of our institutional funds (money collected from dorm rentals and so forth) which are managed by the State Treasury, are. These funds are combined with institutional funds of other schools in the UNC system and invested in US Treasury notes and commercial paper issued by various corporations. Though we have not been able to obtain the exact dollar amount of the investment in companies operating in South Africa at this time, Doug Chappell, director of the state treasurer's investment and banking division, told The East Carolinian that some of these funds are invested in such companies.

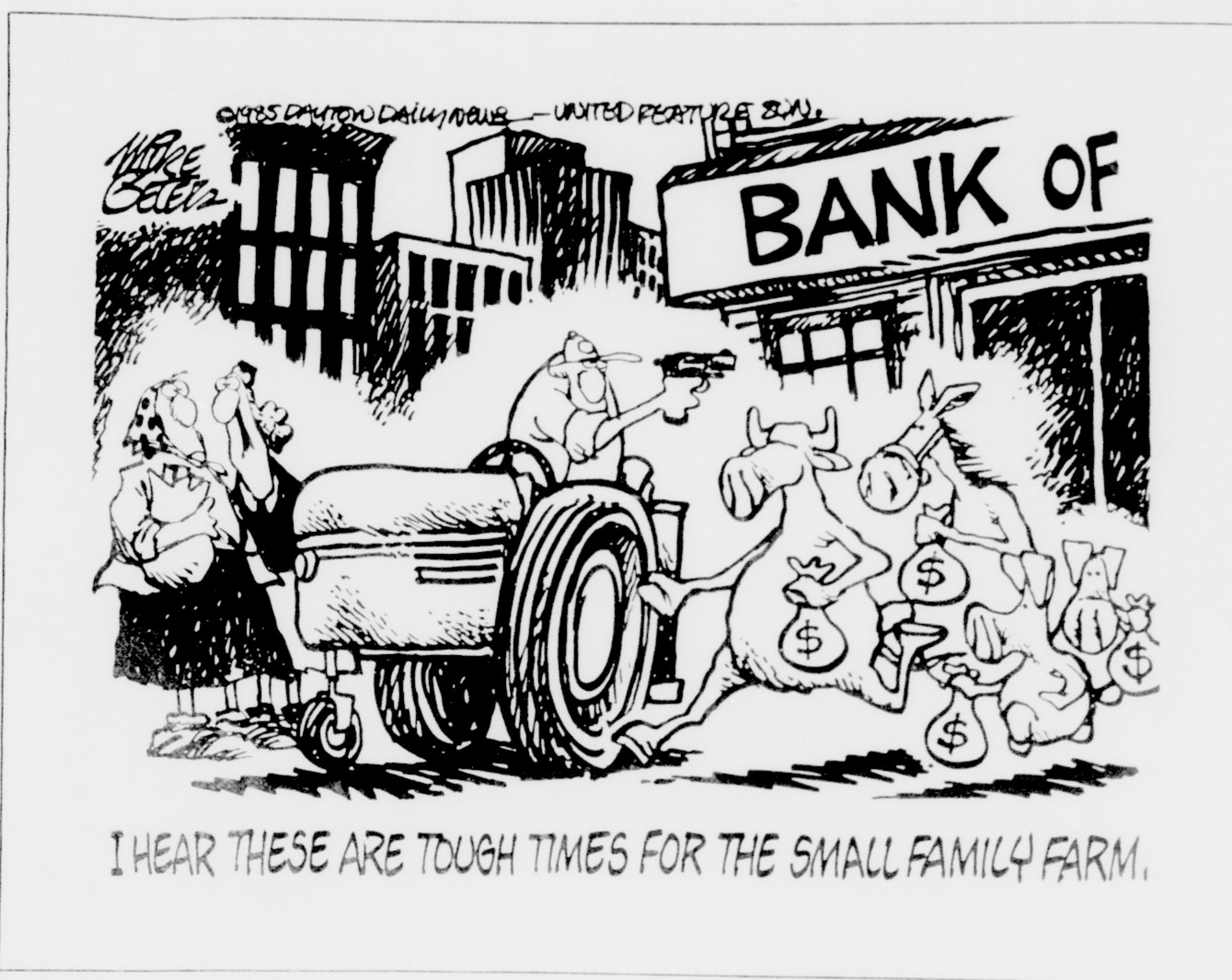
It is clear that for an institution of higher learning which espouses and supports democratic values to support a regime which embodies the very antithesis of such values is a wrong that cannot go unaddressed.

Since schools in the 16-campus-strong UNC system do have investments in South Africa and ECU is a part of that system it is clear that we are not uninvolved. Moreover, money from our school has been invested in upholding apartheid by our state treasurer on our behalf.

We feel, therefore, that the students at ECU should join in the struggle of the students at other schools in the UNC system who are fighting against apartheid. We should pass a resolution through our student government legislature calling upon the state and the UNC system to divest themselves of all holdings in corporations operating in South Africa. We should send copies of the resolutions to the student governments of all schools in the UNC system, the Board of Governors, the state legislature and Governor Martin. By so doing, our university system and our state can demonstrate its opposition to racism and set an example for the system are invested in South Africa nation.

East Carolinian, containing an up-to-date schedule of the weekend's events, a campus map, a map showing where to park for the football game, and an interview with the chancellor.

We are happy to be of service to the people who have sacrificed so much in many cases to help make an education possible for their children. We salute and honor the parents of our students and extend our best hopes that they will have a great stay here in Greenville. Thanks are due also to the folks who thought of having a Parent's Weekend in the first place.



US Corporations Support South Africa

Divestment Strategy, Apartheid

By JAY STONE

"The South African government considers it a crime for anyone to advocate divestment, which must surely indicate how seriously they regard it as a pressure for peaceful change in our country." — Bishop Desmond Tutu, June, 1985

Those who argue that divestment as a strategy to bring about an end to the apartheid system in South Africa, will be ineffective and, therefore should be opposed, are actually supporting a continuation of a policy of moral irresponsibility on the part of the United States. It is, of course, no secret that the Reagan administration has had the principal of moral irresponsibility as the very basis of its policy in South Africa since it assumed power.

Yet, even the Reagan Administration has been forced to moderate its public posture on the apartheid issue as a result of the public outcry against the apartheid regime's handling of recent events inside that country. For example, there are Reagan's newly announced sanctions against South Africa, which were proposed, both to appease the growing opposition to his constructive engagement policy there and to head off a stronger sanctions bill being proposed by the Democratically-controlled House of Representatives. The fact, however, that Reagan's sanctions are weak and largely ineffective is no secret on Capitol Hill or among anti-apartheid activists. They are little more than a slap on the wrist of the Botha regime which has announced its intention of preserving apartheid at all costs.

Another indication of the Reagan administration's moderation of its stance on apartheid is the shift in its rhetoric between the spring and the summer. When South African police fired upon a large group of black demonstrators commemorating the 25th anniversary of the Sharpsville massacre on March 21, Reagan claimed at a news conference that the protestors were at least partially to blame for precipitating the violence, in which at least 19 demonstrators were killed. "There is an element in South Africa," Reagan said, "who wants ... trouble in the streets."

But by July, when Pretoria tightened the screws by declaring a state of emergency, the Reagan Administration was blaming the apartheid system. The overwhelming votes in favor of anti-apartheid legislation in Congress were seen by the White House as a political barometer.

Just as the Reagan Administration has been compelled to moderate its position on the South Africa issue those who oppose divestment may be persuaded of the logic of the tactic as opposition to apartheid continues to mount in the United States. For, the simple fact is that the arguments against divestment do not hold water.

First, the role of U.S. corporations in South Africa is not, on the whole, one which encourages the abolition of apartheid. Secret General Motors contingency plans prepared in 1977 indicate that the company would cooperate with the South African government "in the event of civil unrest" and that "vehicles may be taken over for Civil Defense purposes."

Control Data Corporation sold equipment to the South African police in violation of U.S. Commerce Department regulations. Other firms such as IBM supply computers used in maintaining the pass laws, which keep all blacks

who the government chooses not to issue a pass to confined to the Bantustans or reservations where blacks are forced to live by law.

Moreover, U.S. investment is concentrated in the most crucial sectors of the South African economy — automobiles, oil and energy, and computers. By strengthening the apartheid economy, U.S. involvement increases the ability of the white government to preserve its power. For instance, Flour Corporation of California, on contract with SASOL, the South African Coal, Oil, and Gas Corporation, is providing \$4.2 billion worth of coal-to-oil conversion plants to help South Africa achieve energy self-sufficiency and withstand an oil embargo. Major U.S. oil companies like Exxon, Mobil, Texaco, and Standard Oil of California are supplying oil to South Africa.

Thus, corporate withdrawal from South Africa is necessary because U.S. lending and investment greatly strengthen the apartheid regime. As the Senate Subcommittee on Africa stated in a January 1978 report: "The net effect of American investment in South Africa, has been to strengthen the economic and military self-sufficiency of South Africa's apartheid regime."

Though the dollar amount of the U.S. investment is not so substantial that the loss of such a sum would cripple the South African economy, the particular sectors of the economy that are fueled by American investments are crucial. Without American investment in automobiles, oil, energy and computers it is reasonable to surmise that apartheid would be dealt a severe blow. Perhaps that is why the Internal Security Act of 1982 says that those who oppose divestment may be persuaded of the logic of the tactic as opposition to apartheid continues to mount in the United States. For, the simple fact is that the arguments against divestment do not hold water.

First, the role of U.S. corporations in South Africa is not, on the whole, one which encourages the abolition of apartheid. Secret General Motors contingency plans prepared in 1977 indicate that the company would cooperate with the South African government "in the event of civil unrest" and that "vehicles may be taken over for Civil Defense purposes."

Control Data Corporation sold equipment to the South African police in violation of U.S. Commerce Department regulations. Other firms such as IBM supply computers used in maintaining the pass laws, which keep all blacks who the government chooses not to issue a pass to confined to the Bantustans or reservations where blacks are forced to live by law.

Moreover, U.S. investment is concentrated in the most crucial sectors of the South African economy — automobiles, oil and energy, and computers. By strengthening the apartheid economy, U.S. involvement increases the ability of the white government to preserve its power. For instance, Flour Corporation of California, on contract with SASOL, the South African Coal, Oil, and Gas Corporation, is providing \$4.2 billion worth of coal-to-oil conversion plants to help South Africa achieve energy self-sufficiency and withstand an oil embargo. Major U.S. oil companies like Exxon, Mobil, Texaco, and Standard Oil of California are supplying oil to South Africa.

Thus, corporate withdrawal from South Africa is necessary because U.S.

lending and investment greatly strengthen the apartheid regime. As the Senate Subcommittee on Africa stated in a January 1978 report: "The net effect of American investment in South Africa, has been to strengthen the economic and military self-sufficiency of South Africa's apartheid regime."

Though the dollar amount of the U.S. investment is not so substantial that the loss of such a sum would cripple the South African economy, the particular sectors of the economy that are fueled by American investments are crucial. Without American investment in automobiles, oil, energy and computers it is reasonable to surmise that apartheid would be dealt a severe blow. Perhaps that is why the Internal Security Act of 1982 says that any person in South Africa or outside who supports divestment commits the crime of "subversion" ("terrorism" under the predecessor law), for which the penalty is up to 20 years in prison. In spite of the danger, leaders of the trade union movement, the South African churches, and black political organizations continue to call for divestment.

In addition, it is quite possible that an American example of divestment might encourage South Africa's other two principal investors — Great Britain and West Germany — to follow suit. We have induced these nations to follow our lead on the stationing of the Cruise and Pershing II missiles on their soil, (not that this was good) though West Germany was initially opposed to such a move, hence it is not unwarranted to believe that we might persuade them of the wisdom of heeding our council on the apartheid issue.

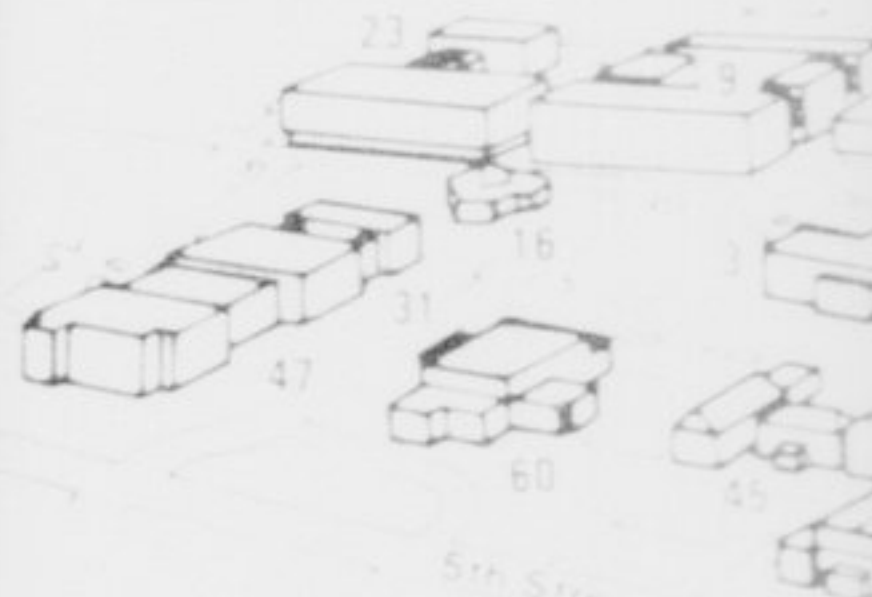
The Sullivan Principles, a voluntary code of conduct which calls for non-segregation in the workplace and fair employment practices, are often touted as an alternative to full divestment. By adhering to the Sullivan Principles, it is argued, U.S. corporations can be a force for progress in South Africa. Of course, even in 1984 only 122 of the 350 U.S. companies operating in South Africa were signatories of the six principles. Thus, compelling corporations to comply with the Sullivan Principles would require new legislation with significant enforcement provisions. Yet, even if the principles were observed they would only affect the 66,000 workers employed by U.S. corporations, fewer than one percent of all working people in South Africa.

More significantly, however, the Sullivan Principles make no demand for change in the fundamental structure of apartheid, no demand for black political rights. Blacks would still be prohibited from voting or holding office. They, therefore, are not a promising tool for bringing an end to apartheid. Even if U.S. divestment caused the blacks who are employed by U.S. corporations to lose their jobs this effect would be offset many times over by the impact that an end to apartheid would have on the great masses of blacks everywhere in South Africa, particularly that huge majority that is not employed by U.S. companies. Hence, we see that, not only is divestment a perfectly reasonable and intelligent strategy for bringing about an end to apartheid, it is also a morally imperative one.

Note: There will be a lecture on South Africa by Samuel Asante, a visiting professor from the Department of Political Science, University of Ghana. The lecture will be held in the Biology building, room 103.



EAST CAROLINA UNIVERSITY CAMPUS



INDEX TO BUILDINGS

- Administration Building
- Art Building
- Biological Sciences Building
- Business Administration Building
- Chemistry Building
- Engineering Building
- Geology Building
- History Building
- Library Building
- Mathematics Building
- Physics Building
- Psychology Building
- Social Sciences Building
- Student Center
- Student Union
- Y-12

| TIME | ACTIVITY |
|---------------|----------------------|
| 9-11:30 a.m. | Registration |
| 9:00 a.m. | Art Exhibition |
| 9-11:30 a.m. | Campus Tour |
| 9:30 a.m. | Snack Bar |
| 9:30-1 p.m. | Student Store |
| 10-11:30 a.m. | Chancellor's Lecture |

Parents'

ECU News Bureau
More than 2,000 parents of East Carolina University students are expected to participate in the school's first annual Parents' Weekend on Saturday, Sept. 28. Activities planned for the weekend include a free movie on Friday evening, followed on Saturday by tours of the campus, a picnic lunch on the mall with entertainment by the ECU Show Choir, open house at residence halls, sorority and fraternity houses; a free movie and the ECU-Temple football game Saturday night. Response from parents so far has been tremendous. "We've sold 1,129 football tickets," said Ron Speier, associate dean of students and Parents' Weekend committee member. "The students may still use their regular free ticket on their IL



ANK OF

Apartheid

...and investment greatly... the apartheid regime. As the... committee on Africa stated in... 1978 report: "The net effect... American investment in South... has been to strengthen the... and military self-sufficiency... South Africa's apartheid regime."... through the dollar amount of the U.S... investment is not so substantial that the... of such a sum would cripple the... African economy, the particular... of the economy that are fueled... American investments are crucial... about American investment in... automobiles, oil, energy and computers... reasonable to surmise that apartheid... could be dealt a severe blow. Perhaps... is why the Internal Security Act of... 1972 says that any person in South... Africa or outside who supports divestment... commits the crime of... "subversion" ("terrorism" under the... predecessor law), for which the penalty... is up to 20 years in prison. In spite of the... danger, leaders of the trade union move... ment, the South African churches, and... black political organizations continue to... for divestment.

In addition, it is quite possible that an... American example of divestment might... encourage South Africa's other two... principal investors — Great Britain and... West Germany — to follow suit. We... have induced these nations to follow our... lead on the stationing of the Cruise and... Pershing II missiles on their soil, (not... that this was good) though West Ger... many was initially opposed to such a... move, hence it is not unwarranted to... believe that we might persuade them of... the wisdom of heeding our council on... the apartheid issue.

The Sullivan Principles, a voluntary... code of conduct which calls for non-... segregation in the workplace and fair... employment practices, are often touted... as an alternative to full divestment. By... adhering to the Sullivan Principles, it is... argued, U.S. corporations can be a force... for progress in South Africa. Of course... even in 1984 only 122 of the 350 U.S... companies operating in South Africa... were signatories of the six principles... Thus, compelling corporations to comply... with the Sullivan Principles would re... quire new legislation with significant... enforcement provisions. Yet, even if the... principles were observed they would only... affect the 66,000 workers employed... by U.S. corporations, fewer than one... percent of all working people in South... Africa.

More significantly, however, the... Sullivan Principles make no demand for... change in the fundamental structure of... apartheid, no demand for black political... rights. Blacks would still be prohibited... from voting or holding office. They... therefore, are not a promising tool for... bringing an end to apartheid. Even if... U.S. divestment caused the blacks who... are employed by U.S. corporations to... lose their jobs this effect would be offset... many times over by the impact that an... end to apartheid would have on the great... masses of blacks everywhere in South... Africa, particularly that huge majority... that is not employed by U.S. companies... Hence, we see that, not only is divestment... a perfectly reasonable and intelli... gent strategy for bringing about an... end to apartheid, it is also a morally im... perative one.

Note: There will be a lecture on South Africa by Samuel Asante, a visiting professor from the Department of Political Science, University of Ghana. The lecture will be held in the Biology building, room 103.

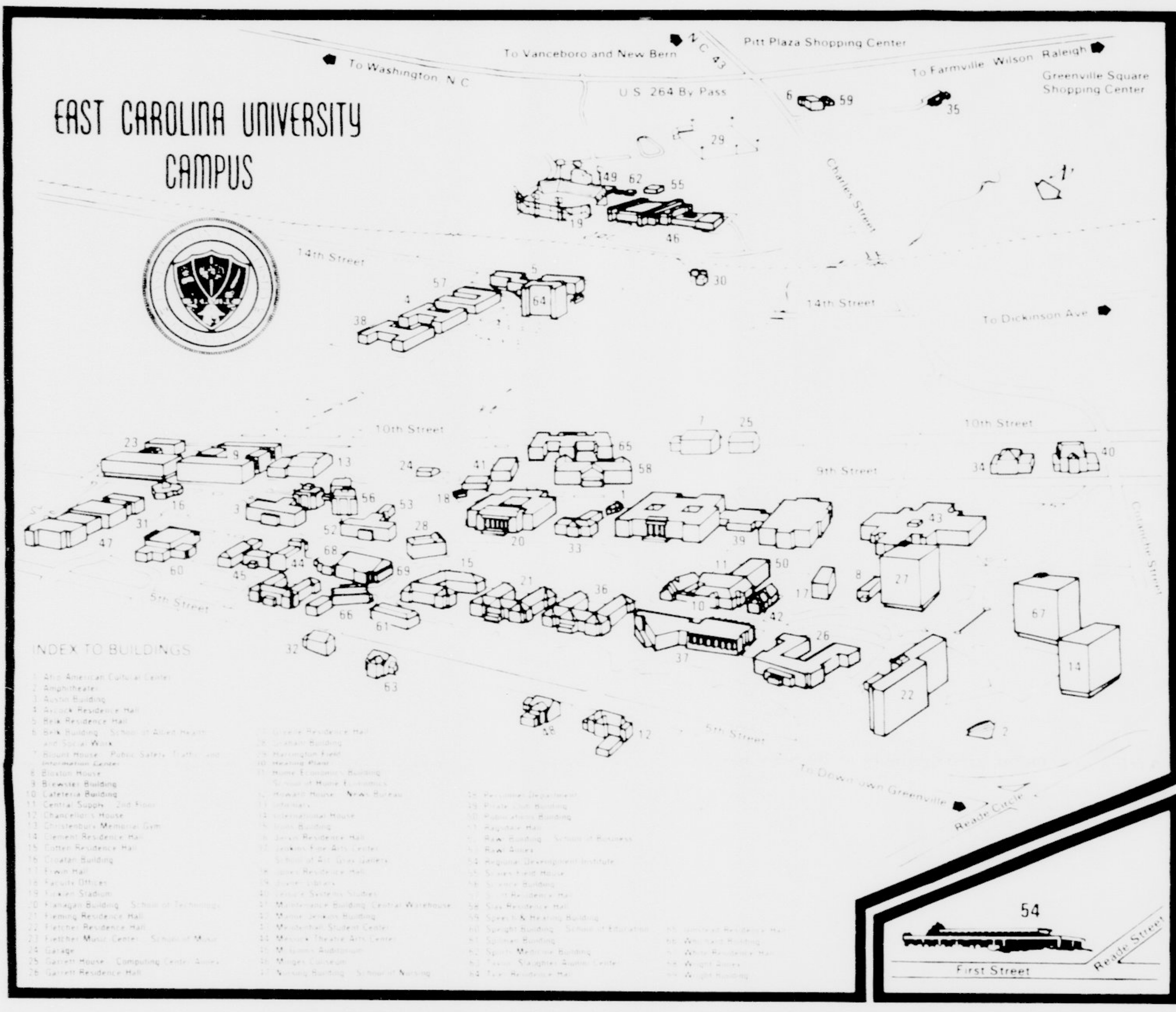


PARENTS' WEEKEND 85

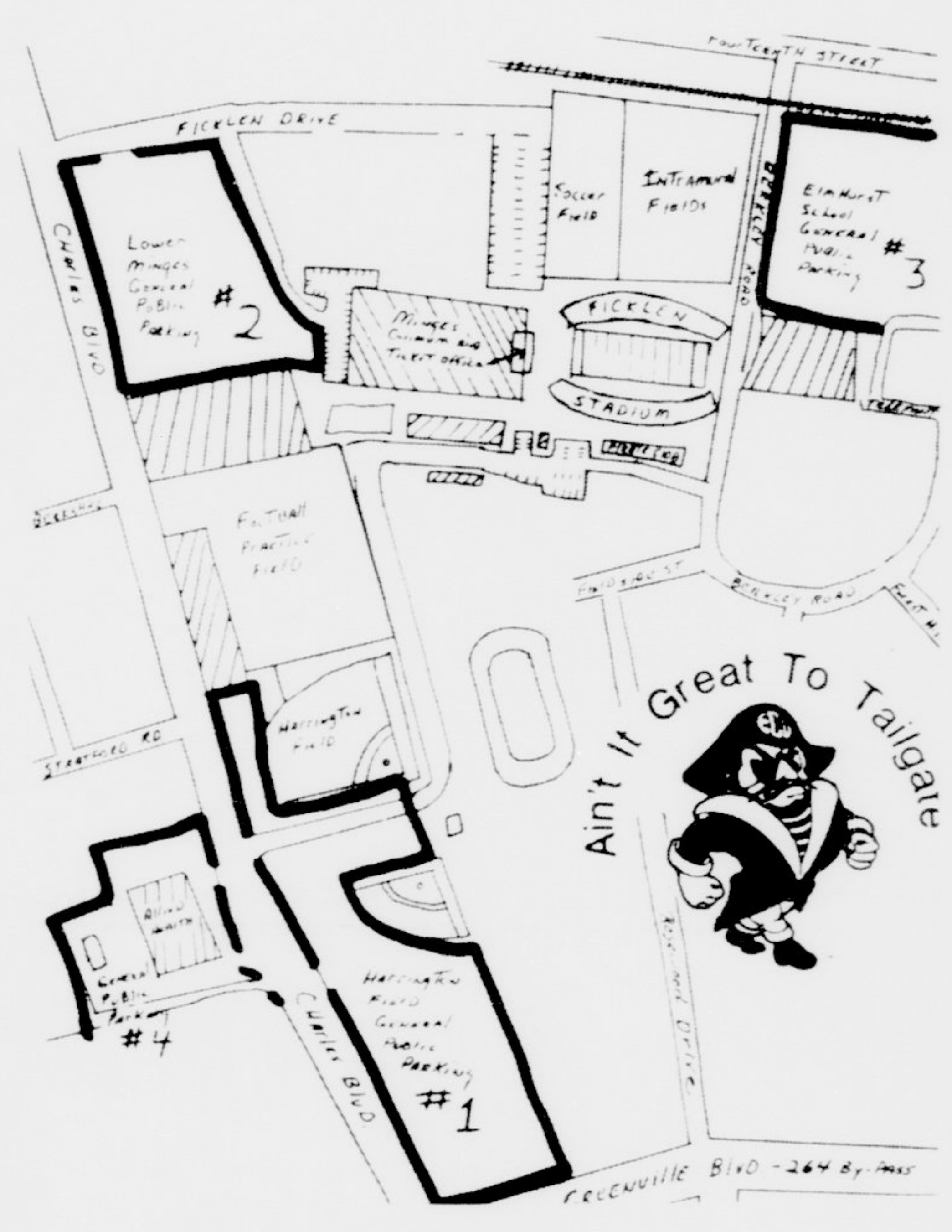
EAST CAROLINA UNIVERSITY



Friday Saturday Parents' Weekend Sunday



Parking Plans



Schedule of Events

| SATURDAY, SEPTEMBER 28, 1985 | | 12 Noon-2 p.m. | Picnic Lunch ★ | Mall ★ Tickets Required |
|------------------------------|------------------------|---------------------|---|-------------------------|
| 9-11:30 a.m. | Registration | 12 Noon | Music School Performance | Mall Band Shell |
| 9:00 a.m. | Art Exhibit: | 12:15 and 1:15 p.m. | ECU Show Choir Performance | Residence Halls |
| 9-11:30 a.m. | Campus Tours | 2 p.m. | Open Houses | Fraternity houses |
| 9:30 a.m. | Snack Bar Open | 2 p.m. | Movie: A Passage to India (PG) (Free Admission) | Sorority Houses |
| 9:30-1 p.m. | Student Stores Open | 5:30-7 p.m. | SGA Transit to Football Game | Hendrix Theatre |
| 10-11:30 a.m. | Chancellor's Reception | 7 p.m. | Football: ECU vs. Temple ★ | Mendenhall Bus Stop |
| | | | | Ficklin Stadium |

Parents' Weekend

ECU News Bureau

More than 2,000 parents of East Carolina University students are expected to participate in the school's first annual Parents' Weekend on Saturday, Sept. 28.

Activities planned for the weekend include a free movie on Friday evening, followed on Saturday by tours of the campus, a picnic lunch on the mall with entertainment by the ECU Show Choir, open house at residence halls, sorority and fraternity houses; a free movie and the ECU-Temple football game Saturday night.

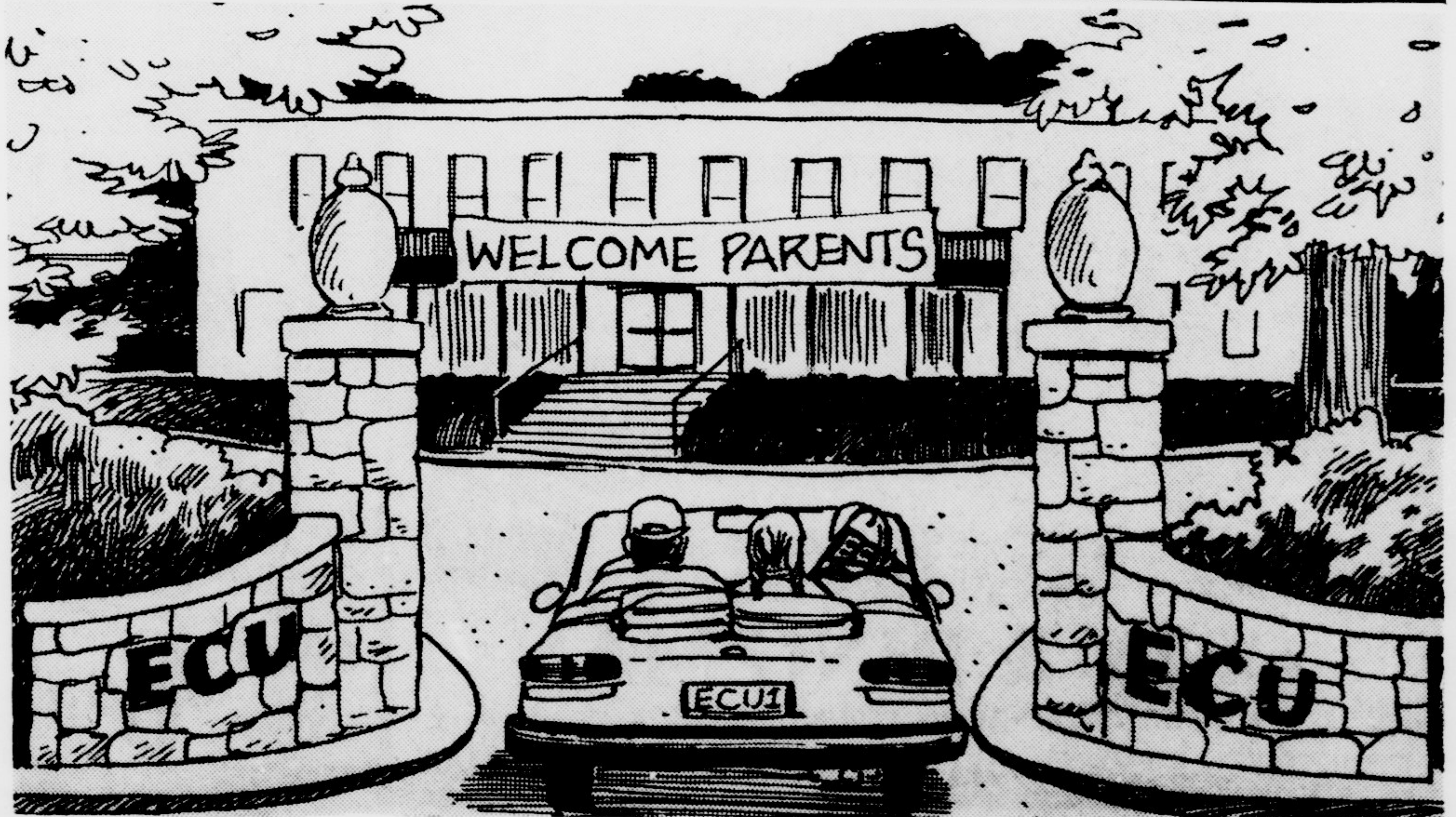
Response from parents so far has been tremendous. "We've sold 1,129 football tickets," said Ron Speier, associate dean of students and Parents' Weekend committee member. "The students may still use their regular free ticket on their ID

card to bring family members to the games, so it's conceivable we could have a lot more."

"It's our job to make everybody feel good about East Carolina," said Page Anan, committee member and alumni field director. "A lot of the parents who are coming are parents of freshmen. When a parent sends an 18-year-old off, we want them to feel good about the decision that a student has made."

It is important, Speier says, for parents of students to become familiar with campus facilities, and to meet with faculty and staff members.

Student Government Association vice president Chris Tomasic, Parents' Weekend Committee co-chair, made sure his parents, George and Fran Tomasic of Durham, were the first registered for the event.



24-Hour Services

During the regular academic terms, the Student Health Center is available to students 24 hours a day, 7 days a week. Out-patient clinic hours for the physicians are 8 a.m.-4:45 p.m. Mon.-Fri. and 3:30 p.m.-5:30 p.m. on Saturdays and Sundays. The physician on call is readily available during the remaining hours at the discretion of the charge nurse. Thus, emergencies can be easily handled at any hour.

Because the Student Health Service budget is derived entirely from student medical fees, most services rendered by the Student Health Service are free. The fees cover all professional services, selected drugs, and many laboratory procedures. Routine allergy, insulin, or other injections are administered by the nurses without charge, and the serums can be refrigerated in the Center. Confidential diagnosis and treatment of venereal disease are included in the services offered. However, the cost of meals for in-patients, lab tests performed outside of the Student Health Center, prescription drugs, and expenses incurred as a result of referrals to off-campus physicians or hospitals are charged to the students. Students with handicaps should be assured that Student Health Services facilities are easily accessible and that the physicians are qualified to assist with special problems and/or referrals.

The Student Health Service also provides psychiatric services, which are available on a part-time basis by appointment only. Gynecological services are available at the Student Health Center. Specific services include contraceptive education and counseling, breast and pelvic examination, pap smears, all indicated lab procedures and written prescriptions for oral contraceptives, and other appropriate medication. Pap smears are scheduled in advance by appointment.

Special requests for medical withdrawals or changes in class schedules for reasons of health are handled by the Director of the Student Health Service. Medical forms for students who require special privileges for parking, room assignments, and physical education for medical reasons also must be approved by the Director.

STUDENT HEALTH INSURANCE — All students are urged to have health insurance coverage of some type. It is important to remember that the student health fee does not cover the cost of x-ray, certain lab procedures, and referrals to off-campus specialists or to hospitals

for surgery and serious illness. A group student health and accident insurance plan has been selected by the Student Health Advisory Committee and is available to all ECU students. It is an inexpensive plan specifically designed for the needs of ECU students. A brochure will be mailed to each student. Further information can be obtained at the Student Health Center.

ECU's Student Health Center has the highest utilization rate of any of the universities in North Carolina, according to Director James McCallum, M.D.

"During the last fiscal year, we saw 52,961 patients," McCallum said. "That's more than Pitt Memorial Hospital's emergency room and the Family Practice Center combined." McCallum added that such a high utilization of the infirmary speaks well of ECU's Student Health Services.

All funding for ECU health services is provided through student health fees, he said. "This includes personnel salaries, equipment and supplies, drugs, building maintenance... everything." However, every effort is made to keep health care costs down, he said.

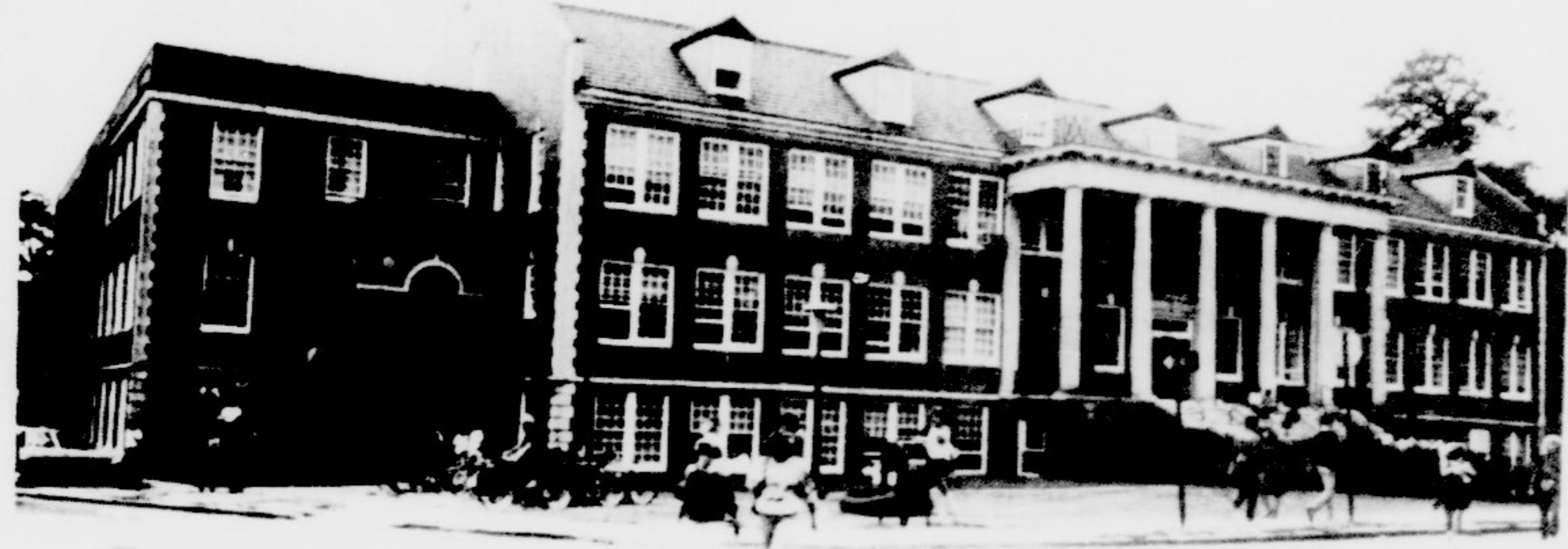
ECU's health fees rank "around the middle" in relationship to the other 13 schools in the

UNC system, but was at the "top of the list" in terms of the number of services the students receive for their money. "Several of the schools offer some services for free, and charge for others. We're the only one that provides free medication," McCallum said.

The only services students are charged for are laboratory and other procedures that must be performed outside the infirmary. Prescription drugs, such as birth control pills, are provided to women at cost, which McCallum said is often less than half the cost of the prescription through a drug store.

McCallum said Center's ultimate goal is to educate students, as well as to provide top medical care. For example, a female student who requests birth control pills is required to have a Pap smear to test for cancer, a full physical examination and attend a lecture on the dangers of the pill. "They are required to do these things so they can make an informed decision on the pros and cons of birth control pills," he said.

Another educational aspect of the Center is the self-help cold center, which began in Sept., 1984. "We teach individuals how to take care of themselves when they don't need a physician."



Playt

These students take time out from sun, courtesy of Intramural Recre ECU students want to know a little



Cricket Inn

GREENVILLE, NC 27834
821 S. MEMORIAL DR.
Two Blocks From Hospital & Minutes From ECU
Shuttle Bus To Hospital/Airport

**CONTINENTAL BREAKFAST
COMPLIMENTARY NEWSPAPER
VALET SERVICE**

LUXURY ROOMS - AFFORDABLE PRICES

EXECUTIVE SUITES AVAILABLE

CALL COLLECT 919-758-5544

Great Steaks

...at a great price

Mon. Tues. Wed.

8oz Sirloin
\$2⁹⁹

Sirloin Tips
\$2⁹⁹



A great place to eat!



Western Sizzlin
STEAK HOUSE

RIVERSIDE

Oyster Bar

710 North Greene Street, Greenville, N.C.

Take-outs Welcomed **752-0090** Store Hours
M-W 11-9
T.F. Sun. 11-10
Sat. 4-10

DINNER SPECIALS

Fisherman's Platter
Select 3 Items
Of Your Choice

Shrimp
Flounder
Trout
Crab Cakes
Deviled Crab
Steamed Shrimp
Clam Strips
Steamed Crab Legs
Shrimp Creole
(Fri. & Sat. Only)
Oysters
Scallops
Catfish
Barbeque
Fried Chicken

\$5.50

Oyster Bar
Now Open

Steamed Oysters
Served
5:00 P.M.
Til Closing

Captain's Platter
Select 4 Items
Of Your Choice

Shrimp
Flounder
Trout
Crab Cakes
Deviled Crab
Steamed Shrimp
Clam Strips
Steamed Crab Legs
Shrimp Creole
(Fri. & Sat. Only)
Oysters
Scallops
Catfish
Barbeque
Fried Chicken

\$6.50

All You Can Eat Extravaganza

Fried Chicken
Fried Shrimp
Crab Cakes
Clam Strips
Trout
Fried Oysters
Shrimp Creole
(Fri. & Sat. Only)

\$6.95

Flounder
Deviled Crab
Barbeque
Fried Catfish

Your Choice Of
As Many As
5 Items

\$6.99

\$7.50
*With Alaskan
Crab Legs
\$9.50

Steamed Seafood Feast
Alaskan Crab Legs
Steamed Shrimp
Sautéed Crabmeat
Baked Potato
Salad

\$7.95

WE BUY & SELL

WE PAY CASH ON THE SPOT FOR



FURNITURE



**CLASS RINGS
WEDDING BANDS
ALL GOLD & SILVER**



TV'S AND STEREOS



**APPLIANCES
(Large & Small)**



**SILVER, GOLD
& Collector Coins**



**WATCHES, CAMERAS,
BINOCULARS, ETC.**



COIN & RING MAN

DOWNTOWN

CORNER 5TH & EYANSEVANS STREET MALL

Investors an

A FEW RIVINGTON TOWERS FOR RESALE. IF THIS BUILDING WAS SOLD OUT A UNIT, CALL US NOW. UNITS AVAILABLE. PR



RINGGOLD

At The Campus • East

SALE AND RENTAL UNITS
LOCATED NEXT TO CAMPUS
WALK TO CLASSES AND RECREATION
EFFICIENT, 7 x 10-REAR UNIT
FULLY FURNISHED AND APPOINTED
CARPETED AND AIR CONDITIONED
WARD ROOM
FOR CLOTHING
CALL 919-758-5544

Clip Co.

Tailgating

Chicken & Ribs Combo

- 1 Whole Chicken
- 1 Full Rack BBQ Ribs
- 4 Corn on the Cob

or

- 2 Whole Chickens.....
- 4 Corn on the Cob

or

- 2 Full Rack BBQ Ribs
- 4 Corn on the Cob

Extras:

- Potato Salad (Reg. 67c).....
- Maccaroni Salad (Reg. 67c).....
- Pasta Salad (Reg. 67c).....

*Expires Dec

Open 7 Days
Corner of 10th &

Intramural Activities Are Fun



JIM LEUTGENS — The East Carolinian

Playtime

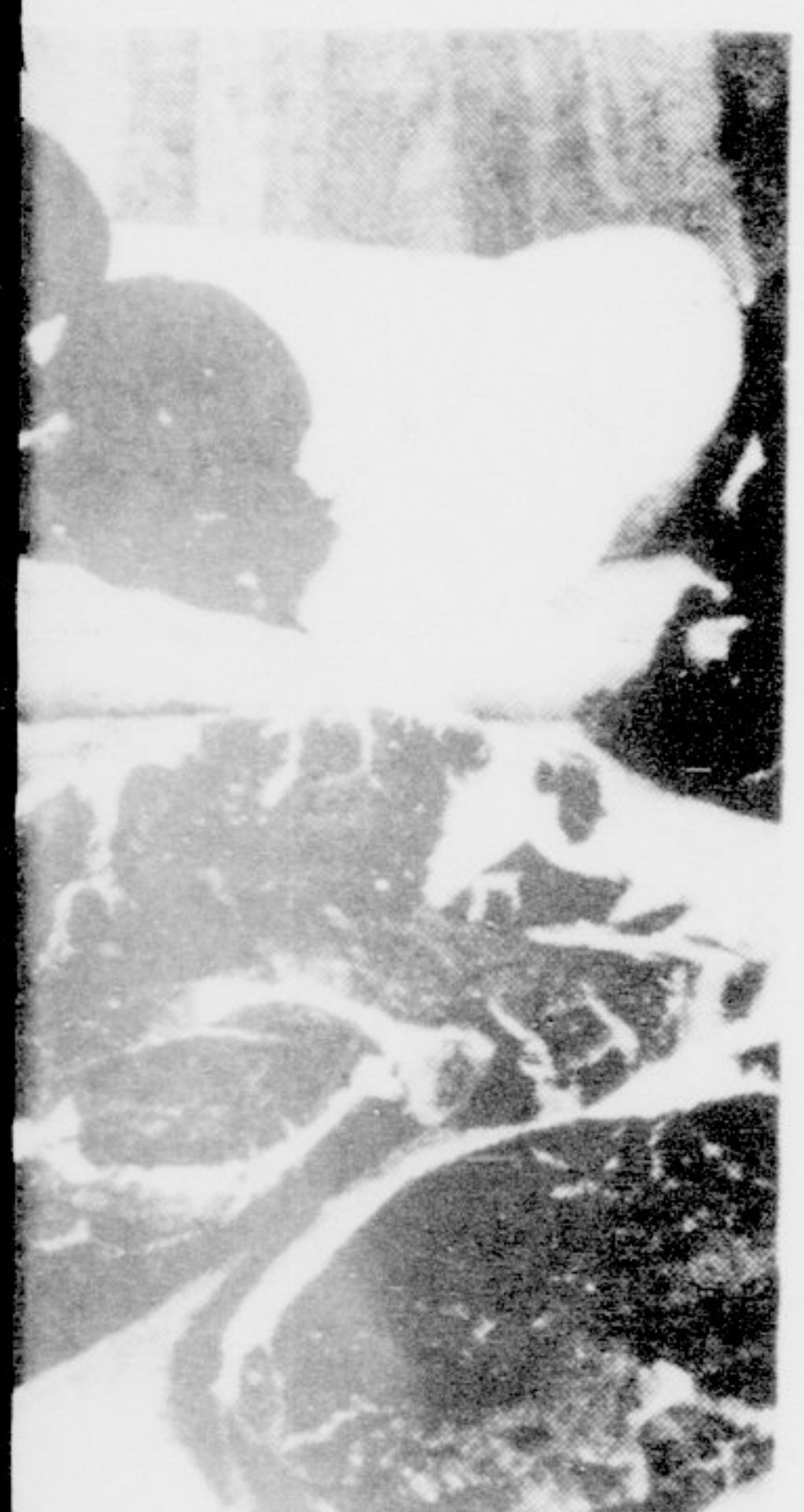
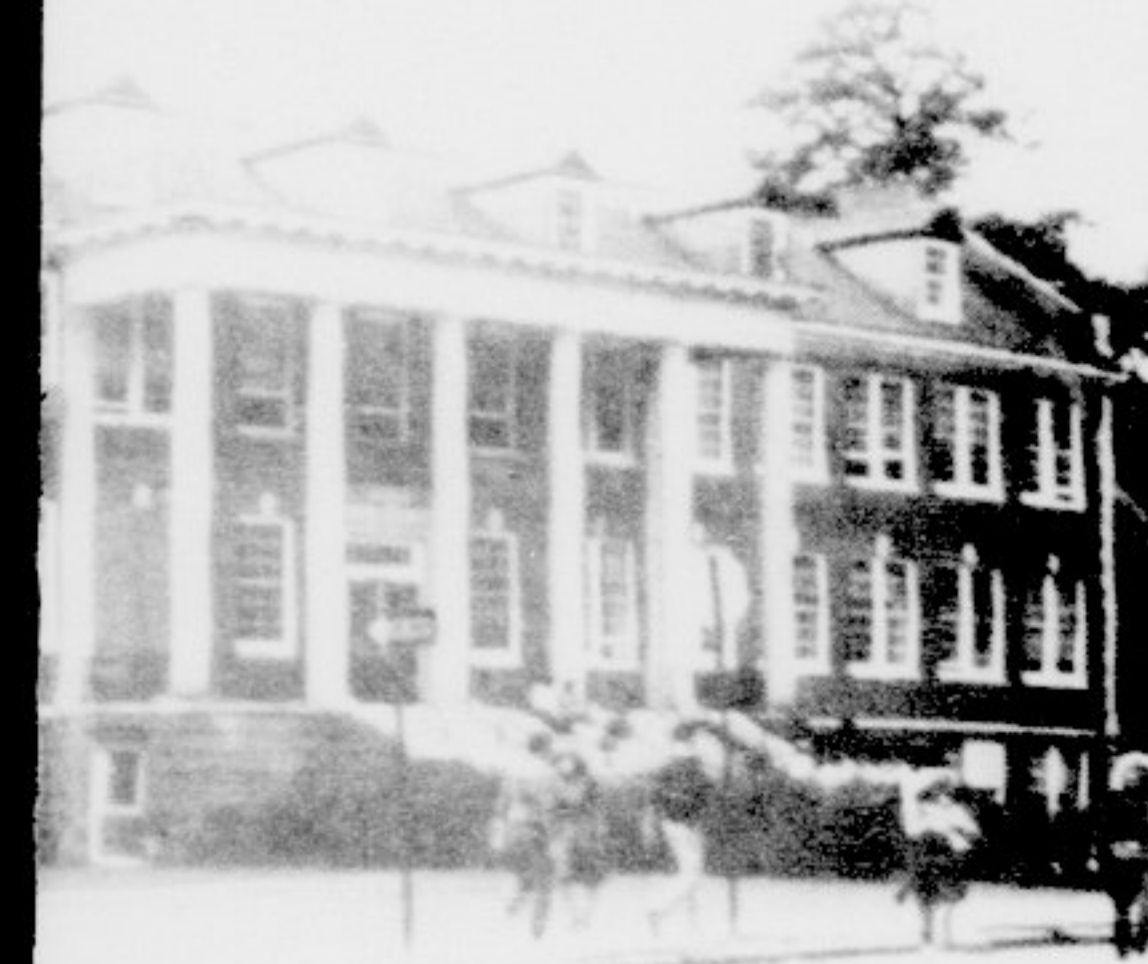
These students take time out from classes to enjoy a little fun in the sun, courtesy of Intramural Recreation Services — the only IRS ECU students want to know a little better.

Intramural-Recreational Services (IRS) is an exciting, leisure-oriented facet of student life on the ECU campus, according to the Office of Student Life. Its name is synonymous with enjoyment, relaxation, friendship, physical activity, voluntary participation and a welcomed break from the study routine. The Department of Intramural-Recreational Services, located in Room 204 of Memorial Gymnasium, is responsible for men's, women's and co-recreational intramural activities, informal ("free play") recreational activities, recreational swimming, sport clubs, outdoor recreation, adapted recreational opportunities and the recreational equipment check-out services. The department also provides a sports medicine program for sport club and intramural participants, with provisions for first aid, preventive and rehabilitative services.

INFORMAL RECREATIONAL OPPORTUNITIES — Free play opportunities are regularly available at Memorial Gymnasium and on a limited basis at Minges Coliseum. The Memorial Gymnasium facility includes a multi-purpose gymnasium, exercise rooms and a "fixed weights" weight room. Minges Coliseum includes a "free-weights" facility, racquetball courts and a multi-purpose gymnasium. Playing fields located in the Ficklen Stadium, College Hill and Allied Health areas are available for students on an informal utilization basis when the areas are not scheduled for intramural activities. Picnic areas (tables and grills) are located within the College Hill, Central and West campuses.

Over 35 hours of recreational swimming are available each week through the Memorial Gym and Minges Coliseum pools. Early morning, mid-day, afternoon and evening hours are scheduled for each weekday, with an expanded afternoon schedule for each weekday, with an expanded afternoon schedule available during weekends.

RECREATIONAL EQUIPMENT CHECK-OUT SERVICES — Students may check out a wide variety of recreational/sports equipment from the Memorial Gymnasium equipment room (MG 115). Such items as basketballs, footballs, golf clubs, tennis and racquetball racquets, softball gloves, volleyball standards/nets and horseshoe equipment are available at no charge.



Best place to eat!
Western Sizzlin
STEAK HOUSE



Greenville, N.C.
Store Hours
M-W 11-9
T-F Sun 11-10
Sat 4-10

Captain's Platter
Select 4 Items
Of Your Choice
Shrimp
Flounder
Trot
Crab Cakes
Steamed Crab
Steamed Shrimp
Creme Sauce
Steamed Crab Legs
Shrimp Creole
(Fri & Sat Only)
Desserts
Sautéed
Cauliflower
Barbeque
Fried Chicken
\$6.50

Travaganza
\$7.50
With Alaskan
Crab Legs
\$9.50

Steamed Seafood Feast
Alaskan Crab Legs
Steamed Shrimp
Sautéed Crabmeat
Baked Potato
Salad
\$7.95

Investors and Parents:
A FEW RINGGOLD TOWERS UNITS ARE AVAILABLE FOR RESALE. IF THIS POPULAR STUDENT CONDO BUILDING WAS SOLD OUT BEFORE YOU COULD BUY A UNIT, CALL US NOW FOR INFORMATION ON THE UNITS AVAILABLE. PRICES START AT \$31,900.



RINGGOLD TOWERS
At The Campus • East Carolina University

- SALE AND RENTAL UNITS
 - LOCATED NEXT TO CAMPUS
 - WALK TO CLASSES AND DOWNTOWN
 - EFFICIENCIES, 1 & 2-BEDROOM UNITS
 - FULLY FURNISHED AND ACCESSORIZED
 - CARPETED AND AIR CONDITIONED
 - KITCHEN APPLIANCES FURNISHED
 - LAUNDRY FACILITIES
 - ON-SITE MANAGEMENT
 - NIGHT SECURITY PERSONNEL
 - RESIDENT PARKING STICKERS
- WARD PROPERTY BROKERS
105 COMMERCE STREET
DRAWER 568
GREENVILLE, N.C. 27835
919 756-8410

Sunny's
Char-Broiled
Chicken & Ribs
830-1530

Tailgating Specials

Chicken & Ribs Combo \$12.95
1 Whole Chicken
1 Full Rack BBQ Ribs
4 Corn on the Cob
or
2 Whole Chickens..... \$12.95
4 Corn on the Cob
or
2 Full Rack BBQ Ribs \$12.95
4 Corn on the Cob

Extras:
Potato Salad (Reg. 67c)..... 50c/Serving
Maccaroni Salad(Reg. 67c)..... 50c/Serving
Pasta Salad (Reg. 67c)..... 50c/Serving

Expires Dec. 8, 1985

Open 7 Days 11 a.m. — 11 p.m.
Corner of 10th & Charles Blvd.

CONSOLIDATED THEATRES Adults \$2.00 TIL 5:30 CHILDREN ANYTIME

BUCCANEER MOVIES
756-3307 • Greenville Square Shopping Center

Held Over 2nd Week
YEAR OF THE DRAGON R
3 SHOWS DAILY 2:00-5:00-8:00

Starts Friday Jane Fonda in
"AGNES OF GOD"
Shows 1:00-3:00-5:00-7:00-9:00 PG 13

Starts Friday
Back By Popular Demand
COCCOON PG 13
Shows 2:00-4:30-7:00-9:15

FRI-SAT LATE SHOW Open 11:00 Starts 11:30 NO PASSES
"WOMEN AT PLAY" XXX

SHE'S HOT!
America's Newest Porn Sensation.

Auto Specialty

"The Engine People"
629 Dickens Ave.
2 Blocks From West Campus
Downtown
Next Door To Pirates Landing
758-1131

- All Types General Repairs
- Complete Radiator Shop
- Machine Shop Engine Rebuilding
- Foreign Car Engine Rebuilding
- Oil Change
- Tune Ups

Auto Specialty welcomes all parents to ECU. We would like to take care of all your auto service needs. Auto Specialty feels that it is important that parents of students attending this university be consulted when a students auto needs servicing. We will be glad, if requested, to call a parent about any problem that may arise with the students auto during the his/her stay at ECU. We take the time to show you the problem and fully explain any repair.

H.L. Austin, President and Owner of Auto Specialty and a graduate of ECU, knows that many times the student is taken advantage of. Auto Specialty is dedicated to give the student honest and reliable service at a reasonable price. Come see what makes us different from the rest.

The Arbor Restaurant WELCOMES
ALL E.C.U. PARENTS

For parents weekend take advantage of the delectable
All You Can Eat & Drink Specials featured at
The Arbor Restaurant

Crab Legs & Chablis
Sweet and Succulent Alaskan Crab Legs
..... **\$10.95**

Shrimp and Chablis
Tender shrimp fried, boiled, or broiled
..... **\$10.95**

Beef & Burgundy
The best Prime Rib ever!
..... **\$10.95**

All specials include a stuffed or baked potato and a trip to our 40 item Salad Bar

Come and taste the extraordinary!
We promise you won't be disappointed

Special Parents Day
Weekend Hours
Fri. 27th from
5:00 p.m.-10:00 p.m.
Sat. 28th from
5:00 p.m.-11:00 p.m.

Arbor Restaurant
Located at the Ramada Inn
301 Greenville Blvd.
Greenville, NC 27834
756-2792

Center Helps

All students are encouraged to seek guidance regarding the employment process and career decision-making. Call or drop by the office in Bloxton House to discuss any areas of concern which you may have pertaining to choosing an occupation or obtaining employment. SIGI, a computerized system of Interactive Guidance and Information is available for all students to use at no cost. The system helps individuals make informed career decisions. A vast store of occupational data, developed over a 10 year period of time and made current each year, is available for students to draw from. SIGI helps its users to clarify their own values, explore occupational options, develop educational plans, and learn how to make informed decisions. This program is exceptionally easy to use with very little orientation or assistance. Come by or call the office to make an appointment. Occupational Literature — for assistance in obtaining information on business firms, school systems, government agencies, and career planning, resource rooms are located in the building and are available to all University students and alumni. Take advantage of this service and become acquainted with the opportunities for employment in all the various occupations. Workshops are conducted on interviewing techniques, resume writing, job search strategies, and the various aspects of career planning. A listing of these workshops is circulated each semester, and is printed in The East Carolinian's announcements, giving the time and location of each session. Video equipment is available for practice interviewing. Appointments can be made by contacting the office. Job Openings — Students

who register with this office are notified of vacancies which exist on a monthly basis via a job openings list. Interviews — As a part of the monthly job guide, registrants are notified of recruiters who will be visiting the campus and are given an opportunity to sign up for the interviews.

Campus Media

Student-sponsored media at East Carolina University operate under the authority of the Media Board. Publications at ECU include THE EAST CAROLINIAN (semi-weekly newspaper), the BUCCANEER (yearbook), REBEL (literary magazine), and EXPRESSIONS (minority publication). WZMB is the student-operated FM radio station serving the campus and surrounding area. The Photo Lab is responsible for providing the photographs for the various publications.

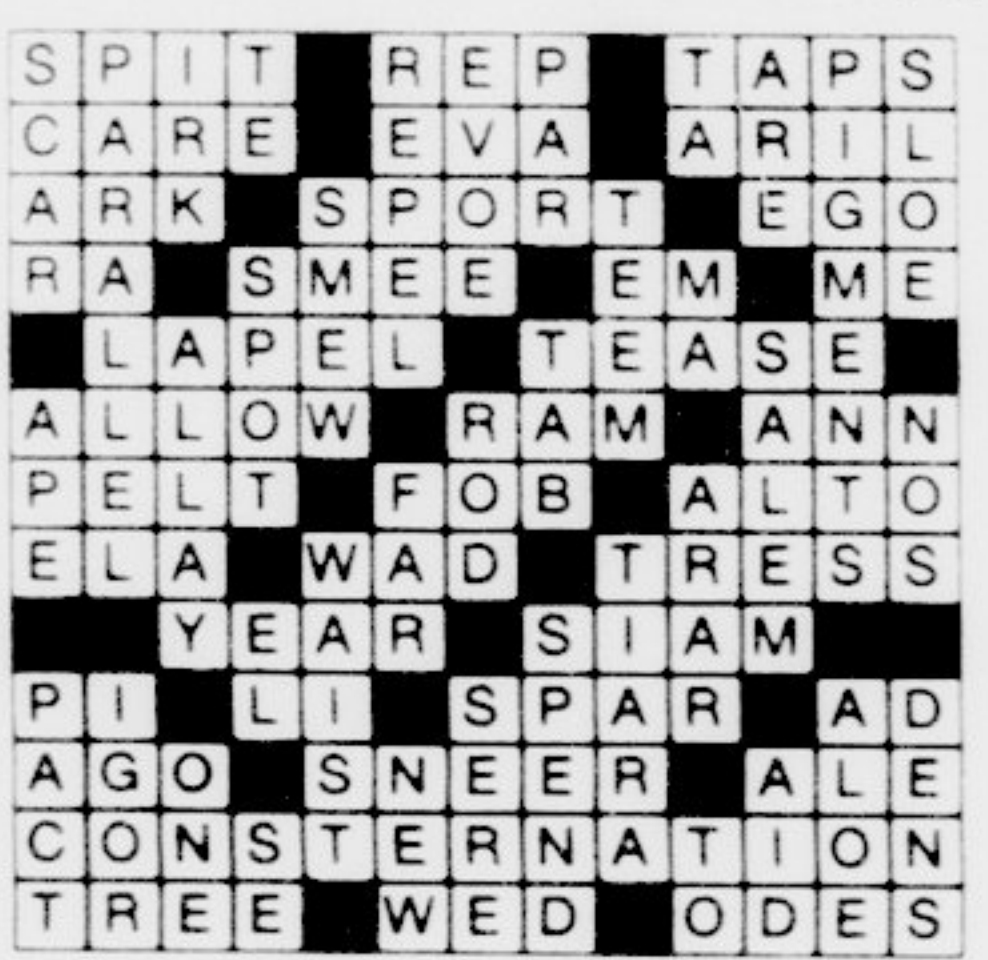
The members of the Media Board include: Presidents of the Student Government Association, the Student Union, the Student Residence Association, the Interfraternity Council, the Panhellenic Council and Minority Students Organization. Other members include the representative-at-large from the Student Residence Association, a

day student appointed by the Board, an administrator appointed by the Chancellor of the University, and a faculty member representing the Faculty Senate. The Vice Chancellor for Student Life serves as advisor.



50% OFF
Process & Print

With this coupon
From 110, 120, 35mm color
DPS Color Print Film
13 1/2¢ per print
Example: 24 exp. film, 12 prints
Now \$4.73
Carolina East Mall
North Fayetteville, N.C. 28753
756-6078
OPEN MON. - SAT.
8 AM to 9 PM
Expires 10-9-85



*Tired of perfumes and ties?
GET A FAN FOR CHRISTMAS
COME TO **HAWAII**
DECEMBER 31, 1985 - JANUARY 7, 1986
FOR ONLY \$769.00
including airfare from Raleigh/Durham
AND
hotel accommodations.
\$100.00 DEPOSIT REQUIRED
CALL NOW! LIMITED SEATS AVAILABLE!
call 757-6611, x266 for more information
or come by the Central Ticket Office, Mendenhall
sponsored by the ECU Student Union Travel Committee



Welcome Parents!

Call "Jokes On Us" for delivery of
tailgate food - fried chicken, etc.

Daily Specials \$2.25

5 FREE PLATES With Purchase of Meal Plan

512 E. 14th St. Near Dorms.
Call for Take-Outs 752-0276

OPEN 7 DAYS A WEEK 11 AM-8 PM



ECU Alumni Center

According to the ECU Alumni Center, students are "alumni in residence."

According to Assistant Director of Alumni Affairs Page Aman, students are only students for four or five years, but they are alumni for the rest of their lives. "We want graduates to maintain contact with ECU as their lives change," said Aman. The best time to begin those ties is while they are still students, she said.

"We want students to know about the services and relationships available to them through the Alumni Association," said Aman. ECU would train the students to be alumni.

Students get new jobs and often times move away to an unknown region. The Alumni Center is trying to make an "extended family" that would be very beneficial to the young

alumni. Through the Alumni Association and alumni chapter involvement, today's students can graduate with ready contacts from the Alumni Association, which in many instances can ease the situation of being far away in a new job.

ECU Ambassadors, a student group of official University representatives, provides a natural liaison between the students and alumni. Sponsored by the Office of Institutional Advancement, Ambassadors work closely with the Alumni Association hosting special functions on campus for the Chancellor, visiting lecturers and artists, or prospective students. Ambassadors also conduct campus tours, speak on recruiting trips with the Admissions Office and call alumni during the Annual Giving telefund.

RIVER BLUFF
"Spacious Affordable Luxury Apartments"
• Professional Management and Maintenance
• 2 Bedroom Townhouses & 1 Bedroom Garden Apartments
• Large Pool
• ECU Bus Service
Locations: 10th Street Extension to River Bluff Road
Next to Rivergate Shopping Center
PHONE 758-4015

We Do Chicken Right.
Kentucky Fried Chicken
2 Piece Lunch Combo
2 Pieces of Chicken
1 Biscuit
1 Mashed Potatoes w/ Gravy
\$1.89
Locations:
500 W. Greenville Blvd. 756-6434
2905 E. 5th St. 752-5184

South Park Amoco
Complete Automotive Service
756-3023 24 hrs.
310 Greenville Blvd.

Tailgate With Time Out On Football Saturdays!
Chicken Bucket Specials
6 Pc. & 2 Biscuits only **\$4.74**
9 Pc. & 3 Biscuits only **\$7.11**
12 Pc. & 4 Biscuits only **\$9.48**
15 Pc. & 5 Biscuits only **\$11.85**
21 Pc. & 6 Biscuits only **\$16.59**
Also Try Our Breakfast Buffet
6 a.m. - 10 a.m.
only **\$2.49**
Located off corner of 10th & Cotanche Streets
Open 24 Hours
758-2098

TREK THE FUNCTION-SPECIFIC BICYCLE.
Complete Repairs on ALL MAKES
Get Ready For The Weekly Time Trials
SPORT TOURING RACING
TREK
Down East Cycles Bicycle Post

Official
WASHINGTON, D.C. (CP)
The U.S. Department of Education has changed the way colleges calculate their student loan default rates.
While the department says it just trying to catch scofflaws, some campus loan officials feel the change will make it easier to cut student aid in the next federal budget.
Using the new formula, the default rate is more than twice

ACROSS
1 Part of reptile
2 Carded cash
3 Hissing
4 Sound
5 A Gator
6 Seed coating
7 Wooden vessel
8 Pasture
9 The salt
10 Sun god
11 Pithy duck

DOWN
1 Coatrix
2 Side by side
3 Irritate
4 Symbol for tellurium
5 Repulse
6 Cry of Bacchanals
7 Equality
8 Symbol for tantalum
9 Exile
10 Clothing substance
11 Wild plum
12 Merganser
13 Abound
14 German
15 Parent
16 Flap
17 Capital of Greece
18 Inmate
19 Latin measure
20 Number 2000
21 Clasp

OVER
21 LARGEST SELECTION HOME OF GREENVILLE'S BEST BREADS QUANTITY DISCOUNTS

PEPSI
1/2 gallon carton
Crisp
California Lemonade \$1.00
2 heads
DELI
Deli Sp
Potato Salad
Turkey Bread
Go

Officials Fear Easier Student Loan Defaults

WASHINGTON, D.C. (CPS) — The U.S. Department of Education has changed the way colleges calculate their student loan default rates.

While the department says it's just trying to catch scofflaws, some campus loan officials fear the change will make it easier to cut student aid in the next federal budget.

Using the new formula, the default rate is more than twice

what it was under the old formula, lending credence to administration warnings that the default rate is out of control.

Critics worry the re-figured rate will improve the Reagan administration's political efforts to make it harder for students to get Guaranteed Students Loans (GSLs), thereby cutting the program's cost.

Loan officials expect the administration to propose cutting

the GSL program again next February. Congress has rejected similar proposals for the last three years.

Currently, about 3.2 million students receive GSLs.

"It's obvious the department is preparing an onslaught (on loan programs), using the default rate as the leading edge of this onslaught," says William Clohan, a lawyer/lobbyist for the Consumer Bankers Association, whose member banks make 80 percent of all student loans.

"They're trying to make an argument for legislative changes they want in these loan programs," Clohan contends.

Jean Frohlicher of the National Council of High Education Loan Programs is particularly miffed. The department implemented the new formula without warning or public comment.

"I suspect it (the formula change) is designed to discredit the GSL program to make it easier to get Congress to go along with the budget cuts the department wants," Frohlicher says.

Education department spokeswoman Sharon Messenger denies any political motive for the change.

She dismisses loan officials' criticisms as "inappropriate." "They shouldn't be finger-pointing or trying to shift the debate from the issue," Messenger says.

"The issue is that there is \$5 billion in student loans that are in default, and anyone who suggests that is not a problem has a different perspective than the department."

"We're trying to assure taxpayers and students that tax dollars are being well spent."

"We're trying to assure taxpayers and students that tax dollars are being well spent."

Department officials quietly revealed the new default rate formula during the first week of September.

The new formula includes two categories of loans previously not counted: loans in litigation and loans judged uncollectable.

When those loans are added, the default rate for 1984 is 7.4 percent, as compared to 3.3 percent under the old formula.

The default rate jumps to 9.4 percent if loans in default that are eventually paid off also are included.

Opponents of the change acknowledge there may be a sound basis for making the

change. It is unclear, they say, whether private-sector loan agencies calculate uncollectable loans in determining default rates.

But they note that, with one exception, the default rate has been declining steadily since 1980. They suggest department officials would have a harder time convincing Congress to cut the program if the default rate was small and getting smaller.

A key representative of university financial aid officers, however, is less concerned about the formula change than the loan officials.

Alumni Center

Through the Alumni Association and alumni chapter involvement, today's students can graduate with ready contacts from the Alumni Association, which in many instances can ease the situation of being far away in a new job.

ECU Ambassadors, a student group of official University representatives, provides a natural liaison between the students and alumni. Sponsored by the Office of Institutional Advancement, Ambassadors work closely with the Alumni Association hosting special functions on campus for the Chancellor, visiting lecturers and artists, or prospective students. Ambassadors also conduct campus tours, speak on recruiting trips with the Admissions Office and mail alumni during the Annual Giving telefund.

TAIL-GATE

Time Out Saturdays!

Market Specials

- only \$4.74
- only \$7.11
- only \$9.48
- only \$11.85
- only \$16.59

Breakfast Buffet \$2.49

10th & Cotanche Streets 24 Hours 2098

Auto Repairs on **MAKES**

Get Ready For The Weekly Time Trials

REX

Bicycle Post

ACROSS

- Part of fireplace
- Corded cloth
- Hits lightly
- Solicitude
- A Gabor
- Seed coating
- Wooden vessel
- Pastime
- The self
- Sun god
- Pintail duck

DOWN

- Cicatrix
- Side by side
- Irritate
- Symbol for tellurium
- Repulse
- Cry of Bacchanals
- Equality
- Symbol for tantalum
- Exist
- Coloring substances
- Wild plum
- Merganser
- Abound
- Blemish
- Parent colloq
- Pacify
- Flap
- Capital of Oregon
- Land measure
- Numbers abbr
- Distant
- Guido's high note
- Small lump
- Lock of hair
- Period of time
- Old name for Thailand
- Greek letter
- Roman 51
- Mast
- Full-time service abbr
- Time gone by
- Scoff
- Beverage
- Dismay
- Woody plant
- Marry
- Poems
- Sandarac tree
- Blouse
- Crown
- Spanish article
- Squander
- Agreement
- Man's name
- Withered
- As far as
- Lairs
- Single
- Recent
- Succor
- Compass point
- As far as

© 1984 United Feature Syndicate

The Puzzle

The Foreign Service Officer Written Examination and other employment opportunities in the Foreign Service of the United States will be discussed by Mr. Paul Canney, Department of State, on Oct. 1 at 9:30 a.m. in Brewster C-101 and at 3:30 p.m. in Rawl 130. Interested students are invited to attend.

Carpet Bargain Center
ROLLS, REMNANTS, VINYL, WALLPAPER & TILE

1009 Dickinson Avenue 758-0057

ECU Student Special

Carpet Remnants

Extra **20%** off Regular Discount Price With Copy of This Ad.

Over 600 Remnants All Sizes

Bring Your Own Measurements & Save Time

Carpet Bargain Center
ROLLS, REMNANTS, VINYL, WALLPAPER & TILE

1009 DICKINSON AVENUE Ph 758-0057 Visa-MasterCharge Cash Or Check

OVERTON'S Supermarket Inc.

211 JARVIS STREET HOME OF GREENVILLE'S BEST MEATS QUANTITY RIGHTS RESERVED

Great For Cookouts!

25% OFF All Coolers In Stock Make Your Selection Now!

Regular or Diet Pepsi Cola 2 Liter Bottle **99¢** Limit 2 with \$10.00 or more food order. Additional Pepsi's \$1.09

Natural Light Beer 6 pack - 12 oz cans **\$1.99** Limit 2 6-packs per customer. Additional 6-packs \$2.19 each.

Overton's Finest Heavy Western

Sirloin Steaks **\$1.79 lb.**

T-Bone Steaks **\$1.99 lb.**

Great For Cookouts!

Grade "A" Fresh Whole Fryers **39¢ lb.** Limit 3 per customer with \$10.00 or more food order.

Baking Potatoes **10¢ each**

Cabana Cheese Puffs, Popcorn, or Potato Chips 6 oz bag & up **GET ONE FREE!** Buy One At Regular Price.

Del Monte Catsup 79¢ quart bottle

Deli Specials

Potato Salad **89¢ lb.**

Turkey Breast **\$3.49 lb.**

Go Pirates Beat Temple

Prices effective through Saturday, Sept. 28, 1985

THE EAST CAROLINIAN IS P



Janet Bissette
Kappa Sigma Fraternity



Nina Lynn Blanton
Slay Dorm



Lee Carson
Chi Omega Sorority



Amy Chapman
Panhellenic Council



Kathy Edgerton
Ambassadors



Martha Hudson
Sigma Sigma Sigma Sorority



Judy James
Methodist Student Center



Casey Ivey
Cotten Dorm



Maureen Jicka
American Marketing Association



Marcia Juranite
White Dorm



Paige Luther
Alpha Delta Pi Sorority

1985 HOMECOMING CANDIDATE



Tracey Mann
Air Force ROTC



Naomi McLaurin
Kappa Alpha Order



Kim Mitts
East Carolina Honors Organization



Jodie Mae Mosher
Phi Kappa Tau Fraternity



Angela Neal
Delta Zeta Sorority



Donna San Marco
Student Union



Tinger Simmons
Sigma Gamma Rho Sorority



Renee Sullivan
Sigma Alpha Iota



Angie Tucker
Phi Beta Lambda



Denise Walls
Greene Dorm

NIAN IS PROUD TO PRESENT



Amy Chapman
Panhellenic Council



Kathy Edgerton
Ambassadors



Kelly Griffin
Student Council for Exceptional Children



Ella Hedgepath
Umstead Dorm



Candy Horton
Jarvis Dorm



Maureen Jicka
American Marketing Association



Marcia Juranite
White Dorm



Becky Kerber
Tyler Dorm



Pat Kingston
NC Art Education Association



Julie Latimer
Alpha Xi Delta Sorority

1985

WELCOMING CANDIDATES



Robin Mahmood
Lambda Chi Alpha Fraternity



Christine Roman
Pi Kappa Phi Fraternity



Jodie Mae Mosher
Phi Kappa Tau Fraternity



Angela Neal
Delta Zeta Sorority



Jenny Lynn Phillips
Fleming Dorm



Volanda Renee Richardson
Clement Dorm



Lisa Whitfield
Alpha Phi Sorority



Angie Tucker
Phi Beta Lambda



Denise Walls
Greene Dorm



Debby Walls
Alpha Phi Omega



Debra White
Sigma Phi Epsilon Fraternity



Pam Wingate
Alpha Kappa Alpha

N.C. Sucks!

By W. BERNARD DUNHILL III
Special to All of Us "Out There"

In thought, word, and deed, it reminds me of a cross between the Reverend "Pass The Loot" Bakker and Ted "I'll cross that bridge when I get to it" Kennedy. Ah, North Carolina! This veritable "Garden of Eden" is snuggled blissfully between that grand old Commonwealth of Virginia (father of the Second Messiah, Robert E. Lee) and South Carolina, the state that started all that crazy crap back in the 1860's.

North Carolina is the land of the backwoods village. It's former residents definitely had creative minds. Just looking at the names of some of the villages can show us what generations of North Carolinians have done with their free time, for instance: Snow Hill (pronounced Heeul), Pink Hill (Let's skip this one.), Chocowinity (Anywhere near Nestle Quick?), Oh, and please don't forget that ever beckoning locale...yum...Morehead! What a name! And they call this the "Bible Belt"?

Let's face it, this is a !!!led-up state. Don't Democrats outnumber Republicans (who?) three-to-one? Then for God's sake (Pardon me, Mr. Falwell.) why is this state credited with the two most conservative senators in the nation? For cryin' out loud, one was just elected to his third term! Oh, and your newly elected governor, R-E-P-U-B-L-I-C-A-N Governor, has served twelve distinguished years under the

banner of the elephant, not to mention that in last year's election this state swung "Reagan-Bush, Four More Years," by more than a handful. Don't get me wrong, Republicans are great guys (and gals), but all of this can't be credited to sound family planning. The GOP doesn't work miracles (Right, Jerry?). No, sir. So what's the deal? North Carolinians can vote Republican as long as they don't admit it, right? Well, "Long live the Confederacy," I guess.

And now for something completely different — North Carolina attire. And different it is! Take a look around. Finger in throat, please. Tacky! Tacky! Tacky! The typical N.C. businessman wears khaki slacks (preferably garnished with a duck head), a white button-down shirt, a yellow linen tie (also adorned with fowl), a "kelly green" blazer, and a pair of Dexter (Poindexter?) penny loafers. This is well-dressed? Are you kidding me? Barnum and Bailey need look no farther! I know where the fashion-god wasted no time. Fortunately, the females here dress more tastefully.

N.C. girls...don't think I have no complaints in this department. Making-up their minds, much less their faces, is definitely not their forte. They ought to keep in mind (in very small letters to prevent over-crowding) that if they let the guys out there know exactly what they want, they would greatly improve their chances of getting it. However, I hope they don't mind if it's "kelly-green."



North Carolina is in deep water, culturally. Photo by ECU Photo Lab

"Culture? What's that?" should be the expected answer by visitors to North Carolina bored with their hotel rooms. There just isn't any yet. I, too, am patiently waiting till 1997. I'm sorry to burst a bubble, North Carolina, but "layin' out" is generally not considered a cultural experience. In fact, I'm fairly safe in saying that N.C. culture and old Roanoke have a lot in common — absence.

In my desperately long trio of years as a North Carolina resident, I have been enlightened, delighted, amused, and embarrassed discovering a few bizarre Please see NO page 15

From The Not So Right

By PAT MOLLOY
Staff Writer

I spoke to my editor, Steve, and he had an excellent idea for a column...really. However, I'll not tell you what it was simply so that I might use it for another week when I run out of opinions — that'll happen the same week I show up for every class on time.

No, dudes and dudettes, what I'll talk about this week is anything I want. I'm just going to go off on anything that chaps my tuckus. I'll bitch about everything and nothing. Now, I know that each of you would love to do this, but you don't work here; I do. You see, it's my job to be pissed off.

Have you ever tuned in to the People's Court? Of course you

have. But have you ever watched Doug Llewellyn? Doug's the guy who jams the microphone into the litigant's face and asks: "Judge Warner called you a boneheaded space mutant, any comments?"

Well Doug, I have a few comments for ya. Where's your freakin' neck, Doug? Did it go south along with your chin? You have no face, man — just eyes, a

nose, an upper lip that never moves — and nobody knows if you have any teeth. And from there, your face meshes with your chest. And Doug, get a new tie. Pastels went out with bell-bottoms and medallions. Wouldn't you just love to hide about fifty piranhas in Doug's waterbed? Enough about the moron...on to pillage.

Freshman chicks grieve me to no end. I mean they really tee me off. They're so iffy, know what I mean? I'll give you an example: You bring a babe back to your room after going downtown. What's the plan? Get her drunk and do unnatural things to her, right? No way — she's got other things on her mind. You're lying in bed with the girl au naturale, and she whispers in your ear, "Can you just hold me tonight?" Of course I'm miffed, so I reply, "No...but my roommate might." Get the hell out of my bed. Why even bother to come to my room? I'm not responsible for your emotional well-being; I have problems of my own. Go talk to Dr. Ruth — let her hold a naked nineteen-year-old girl all night — I could spend that time drinking.

Who believes cheerleaders? A wave of nausea crawls over me every time I think of one. I just can't help it; they are always so damn happy. Why? I just want to



"Da' teeth, Antonio, look at doze teeth!" Photo by Stanley Leary

I Can Explain, Your Honor. Honest!

By WARREN BAKER
Staff Writer

"I can see you, Your bright legs shining in the sun, You got your hair slicked back, Wayfarers on, baby. I can tell you, that style of yours Will soon be gone, After the long shorts Of summer have gone..."

Maybe I overreacted. I really don't remember. Things start so innocently, you know. Then things seem to build up and soon the guys in green coats take you...

Ssssh. They're back again. Look at them staring at me with their beady eyes. They think I'm crazy, but those guys don't know what I've been through. I've tried to explain things to them, but they end up scratching their bald heads and writing little clandestine comments in their little clandestine notebooks. I can trust you, though. You know me. It was the long shorts of summer; not khakis but long shorts. Ther's a difference, you know. Khakis are usually tan with no frills attached. Long shorts are something altogether different — frills attached.

I remember when my roommate modeled a pair for me. The different colors and shapes attacked my vision with a barrage of bad taste. It looked as though his long shorts had been used as a test palate for 300 different brands of spray paint. As he walked out of the dorm room, I noticed my hands beginning to sweat. I shrugged off the incident. The next day I nearly found myself in convulsions. On my way to class, the long shorts of summer came out of the woodwork. They were all around me. I felt surrounded, no way out. Ssssh. Those people are staring

at me again. Wait a minute and they'll be gone soon. They just don't understand. Then the dreams began, or shall I say...nightmares. I'm walking down by the Student Supply store and all of a sudden I see them coming. Long shorts with smily faces, teddy bears, small hearts, big hearts, color schemes that would offend the Rainbow Coalition. Some even had people's names imprinted on them, names like 'Muffy', 'Biff', 'Skip', and 'Chip'. The faces of the crowd are adorned with smiles and glazed Please see LONG page 15

Pledges Guide To Greeks

By CAPPY IVEY
Staff Writer

Fraternities and sororities have been fighting reputations since long before the release of "Animal House". At times, however, these stereotypes may come in handy. Rush has just ended and the "toga party" images may have been beneficial to the organizations.

Now the fraternities and sororities have new, innocent pledges with no knowledge of Greek life. These students, usually freshmen, have no concept of the life they will lead for the next ten months. Fraternity pledges must suffer through "Hell Week"; sorority pledges must endure endless tests.

In order to make life easier for the pledges, a list of articles needed for a successful pledgeship follows:

Alpha Delta Pi: Pledges, be sure to stock up on your add-a-bead necklaces. It is a race between you and Mr. T. to see who can wear the most chains around your neck.

Alpha Omicron Pi: A tank top always shows off muscles, so have one monogrammed with the sorority letters and let everyone see what you're made of.

Alpha Phi: Pledges should include Dance 101 in their curriculum; line dances are such a big part of all your mixers. If you learn the dances, you could be the next Rockette.

Alpha Xi Delta: A must for these pledges is to get their hair cut in the same fashion as their big sister. Also, since the sorority is known as "the plastic sorority", practice forgetting any GDI's name. This way you can pretend not to know them at a later date.

Chi Omega: Be sure to bring your father's tax return to all meetings. Modeling school is also a necessary requirement. One can

then learn the proper walk, including the slightly elevated nose.

Delta Zeta: A flask is needed for all football games. A wise purchase would also be anything to keep your beverages cool. Beer huggers and coolers make nice gifts for sisters.

Sigma Sigma Sigma: Inexpensive articles are needed to be a pledge of this sorority. Just bring a trusty cigarette lighter to the house in case it ever gets rolled.

For those of you who have pledged a fraternity:

Alpha Sigma Phi: Any article of clothing you have that makes you look like a bum is acceptable. Most of the brothers apparently prefer sweats.

Beta Theta Pi: With the money you'll save by not buying any socks, invest in some boxer shorts. Make sure the shorts are extra long so everyone can tell you are wearing them. Also, purchase a trenchcoat for the winter; a coat with a "flasher" appeal will do nicely.

Kappa Sigma: A tube of crazy glue should suffice, but be forewarned: being stuck on yourself could be messy business.

Lambda Chi Alpha: No Lambda can survive without the basics: khaki pants and a navy blazer. Actually, any article of clothing that enhances the 'preppy' look will do.

Phi Kappa Tau: These gentlemen are recognized for their elite status. However, most of them seem to work at Cubbie's. Seek employment there and save your paychecks for more polo underwear.

Pi Kappa Alpha: This fraternity is new on our campus. All a pledge needs if one jersey with the fraternity letters on it, preferably in the colors of the organization. A box of detergent Please see GREEKS page 15

Support

ECU News Bureau

The School of Nursing at East Carolina University, the first of ECU's professional schools, will celebrate the 25th anniversary of its founding during Homecoming Weekend Oct. 4-5 and honor a man who was instrumental in getting it established.

Rep. Walter B. Jones, D-N.C., who introduced legislation in the General Assembly to establish the school at then-East Carolina College, and will be honored at reception and receive a citation presented by Dr. John Howell, ECU Chancellor.

Jones of Farmville, N.C., was a second term member of the N.C. House of Representatives in 1959 and plunger for passage of his bill on grounds that there were in short supply and that state needed an additional school to educate and train them.

Departments

Continued From Page 1

Cobel said the introductory broadcasts were an example of how technology is changing education. He added that technology would not affect the basic educational process.

"I don't think we'll see wholesale changes in the curriculum because of technology. The basic skills of reading, working with numbers, writing and communicating will remain the same," he said.

Continued From Page 1

Lewis St. between 3rd and 5th St.
E. 6th St. between Maple and Elm St.

W. Rock Rd. between 14th and Edgewood Dr.

Holmes said the department has begun issuing warning tickets to students who park in restricted residential areas. "next week, we'll start giving real tickets. The next week—towing begins."

He added, "We really hate to tow a student's car. It causes trouble between the students and residents, as well as the students and police."

Holmes suggested that a student representative meet with residents around the campus in an effort to alleviate the parking problem.

The Tar River Neighborhood Association covers the area around ECU. If someone representing the students meets with the resident association, I believe they might have some success, not to mention the good relations involved," he added.



Pitter Patter

Just a hint of what's to be expected as Hurricane Gloria moves near the N.C. Coastline. See related story on Page 1.

ATTN: STEPHEN A. SHERBIN and BRIAN K. BERRYMAN

CLASSIFICATION: TOP SECRET

DISBURSEMENT: FOR EYES ONLY

CODE NAME: OPERATION REVIEW

MISSION: INFILTRATION AND INVESTIGATION OF THE ARBOR RESTAURANT

LOCATION: THE RAMADA INN, GREENVILLE, NORTH CAROLINA

BRIEFING: The Arbor is one of Greenville's more elegant restaurants. It underwent major renovations last summer, lending it an ambience of chic sophistication (The type of atmosphere that 'Yuppies' adore) that didn't exist previously.

The decor is a cross between a garden arbor and a tropical cafe. Its pastels range from powdery blue to radiant peach to subtle mauve with deep green and beige undertones. Furnishings include a variety of wicker and light wood.

Meals range in price from \$7.95 to \$15.95. Each entree is accompanied by a choice of potato, a loaf of hot bread, a trip to the salad bar and a glass of the house wine.

Also of note is the wine list. It boasts selections by several blue-ribbon vineyards, both foreign and domestic. The house burgundy, according to the restaurant manager, Terence McEnally, is a generic wine by J.K.G. vineyards, and the house chablis is produced by Franzia.

The host and his wait staff are cordial and more than willing to suggest wines and entrees that complement one another. They do all they can to ensure that your visit is as pleasant as possible.

AGENTS' REPORT: The Arbor has the potential to be even more attractive, particularly to college students. The atmosphere is appropriate for a quiet, romantic dinner or an impressive business interview.

The Arbor offers several all-you-can-eat-and-drink specials aimed toward college students. Shrimp and chablis are the highlights on Wednesdays and Fridays. Thursdays have been set aside for crab legs, and prime rib and burgundy is the offering for Saturdays. The Arbor is moving in the right direction and will be gearing itself even more toward the college crowd this year.

RECOMMENDATIONS: In light of the efforts on the part of the staff to make their guests comfortable and the exceptionally cozy atmosphere, The Arbor definitely deserves a look.

The prices are not too high for the average college student to squeeze out of their budget, particularly if it means an impressive evening out with a fun person of the opposite sex. However, transportation may present problems to those without cars. But if its worth the trip, people will find a way. Enjoy!

— MISSION ACCOMPLISHED —

26, 1985

Guide reeks

then learn the proper walk, including the slightly elevated nose. **Delta Zeta:** A flask is needed for all football games. A wise purchase would also be anything to keep your beverages cool. Beer huggers and coolers make nice gifts for sisters. **Sigma Sigma Sigma:** Inexpensive articles are needed to be a pledge of this sorority. Just bring a trusty cigarette lighter to the house in case it ever gets rolled.

For those of you who have pledged a fraternity:

Alpha Sigma Phi: Any article of clothing you have that makes you look like a bum is acceptable. Most of the brothers apparently prefer sweats.

Beta Theta Pi: With the money you'll save by not buying any socks, invest in some boxer shorts. Make sure the shorts are extra long so everyone can tell you are wearing them. Also, purchase a trenchcoat for the winter; a coat with "Flasher" appeal will do nicely.

Kappa Phi: A tube of crazy glue should suffice, but be warned: being stuck on yourself could be messy business. **Lambda Chi Alpha:** No Lambda can survive without the basics: khaki pants and a navy blazer. Actually, any article of clothing that enhances the "preppy" look will do.

Phi Kappa Tau: These gentlemen are recognized for their elite status. However, most of them seem to work at Cubbie's. Seek employment there and save your paychecks for more polo underwear.

Pi Kappa Alpha: This fraternity is new on our campus. All a pledge needs is one jersey with the fraternity letters on it, preferably in the colors of the organization. A box of detergent. Please see GREEKS page 15

SHERBIN and BRIAN K.

TOP SECRET
FOR EYES ONLY
RATION REVIEW
ATION AND INVESTIGATION
URANT

AMADA INN, GREENVILLE,

por is one of Greenville's more
derwent major renovations last
mbience of chic sophistication
hat 'Yuppies' adore) that didn't

etween a garden arbor and a
ange from powdery blue to ra-
ve with deep green and beige
clude a variety of wicker and

m \$7.95 to \$15.95. Each entree is
of potato, a loaf of hot bread, a
glass of the house wine.
e list. It boasts selections by
ards, both foreign and domestic,
according to the restaurant
ally, is a generic wine by J.K.G.
chablis is produced by Franzia.
staff are cordial and more than
d entrees that complement one
ag to ensure that your visit is as

T: The Arbor has the potential
ctive, particularly to college
re is appropriate for a quiet,
pressive business interview.
veral all-you-can-eat and drink
college students. Shrimp and
s on Wednesdays and Fridays.
side for crab legs, and prime rib
ing for Saturdays. The Arbor is
ction and will be gearing itself
ege crowd this year.

IONS: In light of the efforts
make their guests comfortable
cozy atmosphere, The Arbor
high for the average college stu-
budget, particularly if it means
with a fun person of the opposite
ation may present problems to
ts worth the trip, people will find

CCOMPLISHED —

Supporter Visits Home School

ECU News Bureau

The School of Nursing at East Carolina University, the first of ECU's professional schools, will celebrate the 25th anniversary of its founding during Homecoming Weekend Oct. 4-5 and honor a man who was instrumental in getting it established.

Rep. Walter B. Jones, D-N.C., who introduced legislation in the General Assembly to establish the school at then-East Carolina College, and will be honored at a reception and receive a citation presented by Dr. John Howell, ECU Chancellor.

Jones of Farmville, N.C., was a second term member of the N.C. House of Representatives in 1959 and plunged for passage of his bill on grounds that nurses were in short supply and that the state needed an additional school to educate and train them.

His efforts were supported by the president of ECC, Dr. John D. Messick, and the dean of instruction, Dr. Leo W. Jenkins. The next year Jenkins succeeded Messick as president and began efforts to have the rapidly growing college declared a university, a campaign which succeeded in 1967. ECU now has nine professional schools.

Dr. Eva Warren became the first dean of the School of Nursing and 52 students were enrolled in the first class in the fall of 1960.

During the past 25 years, the School of Nursing has awarded degrees to approximately 1,500 graduates. This fall, there are 600 nursing students including 500 undergraduates and 100 graduate students, according to Dr. Emilie D. Henning, the dean.

Jones is to be honored at a reception given by the School of

Nursing at 6 p.m. Friday Oct. 4 at the Brook Valley Country Club, Henning said. A resolution commemorating the veteran congressman's efforts on behalf of the School of Nursing will be presented at the Oct. 4 meeting of the ECU Board of Trustees.

Dr. Rozella M. Slotofeldt, professor and dean-emeritus of nursing at Case-Western Reserve University, Cleveland, Ohio, will deliver a celebration keynote ad-

dress, "A Glimpse into the Future of Nursing," at a seminar-panel program at 4 p.m. Friday at the Brook Valley club.

On Saturday, the school will have a special 25th anniversary celebration float in the annual ECU Homecoming Parade and a nurses' tailgate party is planned for students, faculty and alumni prior to the Oct. 5 Homecoming football game, Dean Henning said.

Noted Map Drawer Visits

Greenville - Paul Pugliese, chief cartographer for Time magazine, will visit East Carolina University, Sept. 29-Oct. 1, to speak to art and geography classes and to meet with a former professor who inspired his interest in maps some 25 years ago.

He will discuss his work and show some of his illustrations on Monday at 2 p.m. in room B102 of Brewster Building. The public is invited to attend.

As chief cartographer for Time, Pugliese is responsible for the maps and charts published by Time and by Time/Life Books in New York. He says his interest in maps began 25 years ago when he was a student at the University of Arizona and was taking a class under Dr. Simon Baker, now an ECU professor of geography.

Pugliese is visiting Greenville at the invitation of his former professor.

Department Sound

Continued From Page 1

Cobel said the interactive broadcasts were an example of how technology is changing education. He added that technology would not affect the basic educational process.

"I don't think we'll see wholesale changes in the curriculum because of technology. The basic skills of reading, working with numbers, writing and communicating will remain the same," he said.

Cobel emphasized that the job outlook for teachers is optimistic. "The projections we have show a continuing need for teachers in the future. One-third of North Carolina's teachers are eligible for retirement in the near future."

Cobel added teacher pay increases have also attracted more students who would like a teaching career. "We can already begin to see an increase in enrollment."

Parking Problems Pondered

Continued From Page 1

Lewis St. between 3rd and 5th St.
E. 6th St. between Maple and Elm St.

W. Rock Rd. between 14th and Edgewood Dr.

Holmes said the department has begun issuing warning tickets to students who park in restricted residential areas. "next week, we'll start giving real tickets. The next week—towing begins."

He added, "We really hate to tow a student's car. It causes trouble between the students and residents, as well as the students and police."

Holmes suggested that a student representative meet with residents around the campus in an effort to alleviate the parking problem."

The Tar River Neighborhood Association covers the area around ECU. If someone representing the students met with the resident association, I believe they might have some success, not to mention the good relations involved," he added.



Pitter Patter

Just a hint of what's to be expected as Hurricane Gloria moves near the N.C. Coastline. See related story on Page 1.



Newman Catholic Student Center
953 E. 10th Street
Greenville, NC 27834

Campus Mass Schedule

Saturday:
5:30 p.m. in the Biology Lecture Hall (Rm. 103)
Sunday:
11:30 a.m. in the Biology Lecture Hall (Rm. 103)
9:00 p.m. at the Newman Center
Wednesday:
5:30 p.m. at the Newman Center (followed by dinner and fellowship)

The Newman Center is open daily from 8:30 a.m. to 12:00 midnight. Its facilities and programs are open to all students, faculty, and staff at ECU.

NEED CASH?
Southern Gun & Pawn
752-2464
500 N. Greene

PARENTS' WEEKEND

at **ECU** and **UBE**

FREE! Campus Trial Pak

Free Campus Trial Pak for You! And A Free Pom Pom for Mom!

Come by the UBE anytime now thru Saturday with your parents and we'll give you a free Campus Trial Pak and give your Mom or Dad a free Pom Pom. No purchase necessary, limit one pack per student, one pom per parent.

U.B.E.
516 S. COTANCHE
GREENVILLE, N.C.

Contains valuable products, offers and coupons, including

- Alka Seltzer Plus - Cold Medicine
- Del Monte - Yogurt Raisins
- Finesse Shampoo
- Finesse Conditioner
- Finesse Luminescent Mousse
- Finesse Hairspray
- Listerine - Antiseptic
- Lubriderm - Lotion
- ob - Tampons
- Oh Henry!
- Schick - Disposable Razors
- Trident - Soft Bubble Gum

paks do not contain all products shown

QUANTITIES LIMITED, 1 PER STUDENT

e Helps Dreams

atives will be coming to campus to log interviews with seniors. "I encourage all seniors to start the job hunting process. Many of the businesses are hiring now for June," says James.

Bloxton House offers the student occupational guidance, pointing the right direction for future jobs. With a little help, a student's career dreams can be fulfilled.

Week Special

October 5th
Cubbed Ham Sandwich 65¢

Team Cup 27¢

Wright Building
and
Catan

LINA PLAYHOUSE

ENTERTAINMENT SUBSCRIBE NOW
AUCTIONS FOR AS LITTLE AS \$18.00

July

DANCE THEATRE

lina Playhouse, ECU, Greenville, NC 27834
er, 5th & Eastern Streets.
0:00 a.m. - 4:00 p.m.

Be
rmed!

til Sept. 31

ve site

eyewear & contact lenses
ville, N.C. 756-9771

N FIFTH

urant Downtown
nounces

The
Opening

ay—October 2

11-2 Dinner 5-10

No Culture In North Carolina

phrases executed with a distinct North Carolina flavor. The first time a girl told me she had been trying to "get-up" with me I promptly invited her into the nearest broom closet. I originally thought that "get over it" was a discreet way of warning me that a household pet had left its signature in the area. Needless to say I was way off base. The wide spread use of Eddie Murphy's "trim" reminded me of the lining on a fur coat — this time I didn't

miss by much!

A wide variety of incidents such as these have led me to the brink of resignation. Battered and bruised by this unique environment, each new example is written-off, credited to what I have come to call the "North Carolina mentality." This is a state where car salesmen are dignitaries, country lawyers are a dime a dozen, and "Reverends" are filthy rich (Right, Mr. Angeley?). North Carolina has

the type of thinking that causes people to come to a complete halt before making a right-hand turn, to pursue tobacco farming like it may actually get them somewhere, to avoid using turn signals until after their third accident, and to actually believe that

"the South" will rise again! Sartre was right, Hell is other people (Sorry, Jerry) and I'm serving my time now. Enjoy it, North Carolinians.



Greeks

may be helpful also, since the shirt is worn every day.

Tau Kappa Epsilon: This requirement is genetic. No pledges over 5'8" will be admitted. These fellows are known for their parties so bring something to aid in the festivities.

Welcome to Greek life, pledges. Hopefully the next few weeks will be filled with fun and few hardships. In the years to come you will look back on this and say, "Yes, it was worth the hassle," but first you have to survive.

Photo by ECU Photo Lab

Long Shorts Of Summer Fading Fast

eyes, and each hand carries a mug of beer with 'Cubbies' imprinted on the side.

To my horror, I look down and see myself wearing the long shorts of summer. Ennuis sets in, and I feel compelled to buy Ferrari sunglasses and a pair of Wayfarers. I want to cruise in my Volvo, hang out at fraternities and play tennis! I don't even know how to play tennis! My knees shake and my hands sweat, and then somebody yells, "Hey guys, let's party!" And I wake up.

As I relate this to you, I feel cold all over. I need to tell someone, though.

I can trust you. You know me. As the nightmares continued, I started to lose some of my self-control. I tried to figure out why people wore these... these... things. I wondered if they were borrowing their younger brothers' and sisters' pants because they couldn't afford to go out and buy a decent pair for

themselves. Granted, some peoples' thighs *should* be hidden, but, my God, wear a pair of slacks.

Sure, a tailor makes a measurement error in Paris, and everyone must consider the mistake vogue. What a horrid idea.

Then it happened. I don't remember where I found the scissors. My mind recalls getting a care package in the mail from Mom and feeling happy because it temporarily relieved my visions of the shorts of summer.

Inside the package rested a pair of...of...I'll never forgive her for sending me a pair of long shorts. My hands searched and found a pair of scissors, and I began to cut and cut...and my voice cried out with laughter and sighs of relief.

I located my roommate's shorts. Snip, snip, snip. I was ecstatic.

My body leaped from the bed, and I raced into the hallway,

scissors waving in my hand.

The police say I attacked quite a few people until I found this guy with shoulders bigger than most people's cars. Officials say he used my head to create a new door in Aycock dorm. I learned later about the people with green

jackets. They're standing outside the door, right now.

I can't move my arms or legs. The padded floor and walls are nice but I really miss the dorm. But what I don't miss are...

The long shorts of summer. Thank God, winter is on its way.

A RELAXING MASSAGE JUST A PHONE CALL AWAY

Misty Blue Relaxation Studio

BE PAMPERED & PLEASED AS NEVER BEFORE

CALL 746-9997

GREENVILLE • WE ARE HERE VANCEBORO

HWY 43

5 MILES SOUTH OF THE PLAZA

"Private Rooms"
"All Girl Staff"
"Complete Body Massages"

HOURS:
Mon.-Thurs. 11 a.m. - 12 Midnight
Fri. & Sat. 11 a.m. - 1 a.m.
Reservations Under New Management

Time Out
758-2098

Chickon & Biscuits

Tailgate With Time Out!
Open 24 Hours!

Joke's On Us
Food Delivery Co.

Open this Saturday at 3:30 p.m.
For Tailgate Deliveries!
Kentucky Fried Chicken.

DARRYL'S

Lunch Call Dinner
757-1973

ΣΝ

SIGMA NU FRATERNITY

The Knights of Sigma Nu invite the Women of ECU to the FALL '85

» Little Sister Rush «

Wednesday & Thursday
Sept. 25 & 26
9:00 until...

For more information - 758-7640

HOY!! come on down to that thang and party with the SNUS!

ABORTIONS UP TO 12th WEEK OF PREGNANCY

\$195 Abortion from 13 to 18 weeks at additional cost. Pregnancy Test, Birth Control, and Problem Pregnancy Counseling. For further information, call 832-0535 (Toll Free Number 1-800-532-5384) between 9 A.M. and 5 P.M. weekdays.

RELEIGH WOMEN'S HEALTH ORGANIZATIONS
917 West Morgan St.
Raleigh, NC

The Plaza Mall
E. Greenville Blvd.
355-5222

The Plaza

355-5222

Style Shop

"For The Man Who Wants To Dress To Impress"

"dress to impress"! East Greenville Blvd. Greenville, N.C.

- Lee Jeans •••••
Assortment of Colors
- Union Bay •••••
Sweaters and Jeans
- Ocean Pacific •••••
Variety of styles & Colors
- Heet •••••
New Line by Union Bay

Selective styles of Cotler jeans value at \$37.50 now on sale for **\$15.00**

10% discount for all E.C.U. students with student I.D.

Go Pirates

ΑΣΦ and ΕΕΕ

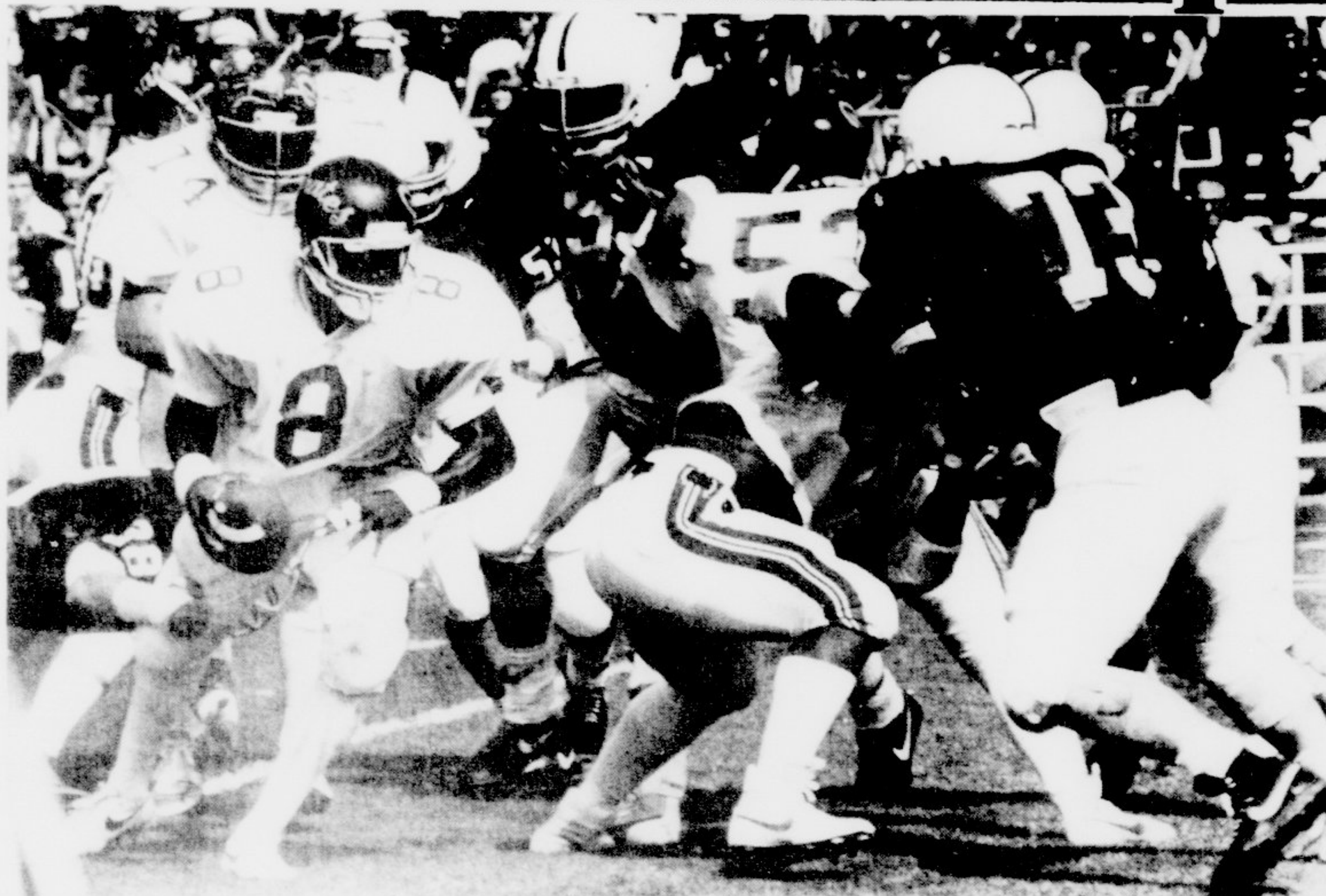
ATTIC ATTIC

Present

SILENT RUN

Friday, Sept. 27th

ECU DORM **FREE** ECU GEN.ADM. **\$1.00**



J.B. HUMBERT — THE EAST CAROLINIAN

ECU quarterback Ron Jones (8) had the best game of his career last week, as he rushed for 107 yards and passed for 112 more in the Pirate loss to Penn State. The Pirates will need another good game from the sophomore this Saturday night against a tough Temple team.

Pirate Ruggers Maul Devils; Battles ASU Here Saturday

By DAVID MCGINNESS

The ECU Rugby Team defeated Duke last Saturday 31 to 12 in their opening match of the season.

The Pirates started out slowly, allowing Duke the first score. That score, however, mobilized the ruggers, "kind of like a slap in the face," said team captain David Schumacher.

The Pirate's first score came as Bob Torin muscled in from five meters. Other ECU scorers were Alan Blankenship with two and Ralph Camranto with one. Douglas Ecklyn of Wells, England also scored with a 40-meter drop kick that had a demoralizing effect on the Duke team.

Schumacher, who returns as captain of the ECU team, was well pleased with his ruggers' performance.

"Saturday was the first time this scrum (team) had played

together," Schumacher said. "It was very strong, with the wing executing very well."

The game is played by two 15-player teams or "scrums" on a "pitch" or field of 100 meters by 70 meters. The scrum consists of eight forwards and seven backs. The object is to gain control of the ball and either run or kick it through two upright goal posts. A "try" or running goal is worth four points, the extra point after the try is worth two. A kicking goal is worth three points.

A match consists of two 40-minute halves plus a five minute halftime which the players must spend on the field. There are no time outs except for injuries, which are fairly frequent.

Rugby is a hard hitting, fast paced sport. The intense contact (with no pads) and nonstop movement (on a field of 70 x 100 meters) make it a grueling contest requiring very good conditioning.

There are many rules and strategies in this sport, which looks to most American's like a game of "smear the queer."

The on-field game is only half of rugby though. After each match the teams get together and party. Members of the team are good friends, and as they socialize together, they call the rugby team "the ultimate frat."

Everyone is invited to come play with the team. Practices are Tue, Wed, and Thur, at 4:00 p.m. behind the Allied Health building. No experience is necessary and dues are \$10 per semester. The team also invites everyone to come out and watch their match against ASU this Saturday at 1:00 p.m. Said team captain David Schumacher, "Come out and support your ruggers and then we'll all go support our Pirates as they take care of Temple."

IRS Almost Anything Goes Soon

By JEANNETTE ROTH

It's coming — the most exciting special event of the year, sponsored by the Department of Intramural-Recreational Services. Almost Anything Goes will once again be held at the bottom of College Hill with 6 more challenging and fun activities. Three activities from last year will be on the agenda plus three new and different ones to suit your fancy. Registration for AAG will be held Sept. 30 - Oct. 3.

The Intramural Cross-Campus Running event will also hold its registration Sept. 30 - Oct. 5. The event will be held Saturday, October 5 and will consist of a 2.5 mile and a 5.0 mile run along a designated "scenic" route. Be sure to register in room 204 Memorial

Gym Mon - Fri, 8:00am - 5:00pm.

September intramural fun may be slipping away, but just see what you can do through the Department of Intramural-Recreational Services in October. The month begins with punt, pass and kick and will end with registration for co-rec basketball. Here's what's going on in-between:

| Activities | Registration Dates |
|----------------------|--------------------|
| Soccer | Oct. 14-15 |
| Bowling | Oct. 16-17 |
| Volleyball | Oct. 16-17 |
| Raquetball Singles | Oct. 28-31 |
| 1-on-1 Basketball | Oct. 28-31 |
| Co-rec Flag Football | Oct. 14-15 |

Officials are needed for the upcoming co-rec flag football and soccer seasons. Expertise is not

necessary. The Department of Intramural-Recreational Services will train anyone interested through a series of clinics conducted by their own Lynette Ginn. Those interested in soccer officiating should mark their calendars for Oct. 14, 9 p.m. in room 102 Memorial Gym. The co-rec flag football clinic will be held the same evening at 7 p.m.

The deadline for the outdoor recreation center's backpacking trip is quickly closing in. The trip will take place Oct. 11, 12, 13 in the Uwharrie National Forest. The Department of IM-Rec Services will provide equipment, transportation and all the excitement of the "great outdoors" for a nominal fee. The last day to sign up is October 4 at 4 p.m. in Memorial Gym, room 105-B. This is the last adventure trip of the semester, so be sure to sign up.

On Tuesday, October 8, at 5 p.m. in Brewster C-103, the Intramural-Recreational Representatives Meeting will be held. All representatives should attend along with anyone else interested in the IRS and its programs.

Lady Pirate Tennis Team Trounces Campbell Camels

The Lady Pirate tennis team, led by No. 1 seed Ann Manderfield, defeated Campbell College 8-1 on Tuesday afternoon.

Manderfield needed ousted Missie Register 7-5, 6-3. Second seeded Becky Clements overpowered D. Van Meter 6-0, 6-0. No. 3 seed Amy Zeimer topped Poole 6-3, 6-0. Fourth seeded Lisa Eicholz defeated Riley 6-1, 6-3. However, after taking the first set easily 6-1, No. 5 seed Susan Montjoy fell to Mattocks 6-2, 7-5. No. 6 seeded Holly Murray knocked off May 6-1, 6-3.

The Lady Bucs swept all three doubles matches as they were victorious in six-straight sets.

Manderfield-Eicholz downed Register-Poole 6-0, 6-0. Swaim-Myers defeated Riley-Van Meter 6-1, 6-3 and Montjoy-Clements topped Mattocks-May 6-0, 6-4.

The Pirate women are now 4-1 on the year and will compete in the Eastern Collegiate Tournament in Raleigh this weekend.



JIM LEUTGENS — THE EAST CAROLINIAN
Ann Manderfield

Pirates Seek Revenge

Owls Invade Ficklen

By SCOTT COOPER & RICK MCCORMAC

After last year's 17-0 home opening loss to Temple, ECU will try to get a measure of revenge when the winless Owls invade Ficklen Stadium this weekend.

"They are the best 0-3 team in America," defensive line coach Rex Sponhaltz said. "They have made some costly mistakes — like us, that cost them some ballgames."

Temple, in their first three defeats this season, have lost by a total of seven points. They lost to Boston College 28-25, Penn State 27-25 and last year's national champion Brigham Young 26-24.

The Owls will be led by a strong running game showcased by junior tailback Paul Palmer, who's the nation's fourth leading rusher. Palmer, who rushed for over 200 yards against Penn State two weeks ago, joined the elite group of Ted Brown and Tony Dorsett. They are the only three running backs in history to have broken the 200-yard mark against the Nittany Lions.

Another steady performer in the Owl backfield is junior quarterback Lee Saltz. Saltz compares much with Penn State quarterback John Shaffer, according to Pirate coaches.

"Saltz is as good or better than Shaffer," Sponhaltz said. "He has a good arm, quick release and

good foot speed — which was something that didn't concern us at Penn State."

Temple coach Bruce Arians, in his third year, is 1-1 against ECU. Arians feels his team is ready for a hard-hitting contest.

"We're ready to win," Arians said. "The team is really excited and shows a lot of effort and enthusiasm. It's going to be a real physical ballgame."

Arians feels that his Owls must contain the high-powered freeze option attack of the Pirates, if they are going to be successful.

"To stop the option, first you have to stop the dive," Arians said. "Then you have to contain the QB and the pitch."

Defensively, Temple is a very physical unit that moves around a great deal. They are the last major college team to play the split-six defense, allowing them to bring four men to either side of the ball. According to offensive line coach Paul Anderson, Temple will give ECU a tough test.

"It's going to take a lot more preparation for us this week," Anderson said. "It's going to be a real big test. They come at you — they attack the offensive line."

ECU coach Art Baker is concerned with the almost extinct split-six defense, because it takes away the running game and forces the pass.

"We're going to be in trouble unless we can throw the ball."

Baker said. "We must continue to improve our passing game, if we want to get better."

"It's a real tribute to coach Arians," Baker added. "There's been no letup since he's been there — he's the reason for their success."

Even though Temple is located in the large metropolis of Philadelphia, and ECU is located in rural eastern North Carolina, coach Baker sees a similarity between the two schools.

"The two programs are very similar," Baker said. "We're both struggling for identity and gaining recognition in a hurry. There might just be a great one out there Saturday."

"Our players have a very vivid imagination of the Temple game last year," Baker continued. "They were very much embarrassed by the way they looked."

Senior place kicker Jeff Heath, who scored four points last weekend, is getting closer to becoming the school's all-time leading scorer. He now trails Carlester Crumpler by only eight points.

Crumpler scored 222 points during his career which spanned from 1971-73. Heath has 214 points with eight games remaining. In this, his senior season.

He also is just five extra-points shy of becoming the school's career leader in that category as well. The current record is 89.

Soccer Team Takes Two Matches

By DAVID MCGINNESS

The ECU soccer team played at their highest level this season and came away from the N.C. Wesleyan Soccer Classic with two wins.

In a game against the number 18 ranked George Mason University, on Saturday Sept. 14, the Pirates lost 2-0. However, this was the first time GMU has been held to two goals this season and coach Stephen Brody was well pleased with the Pirates' performance. "It showed me and the team that they can play with just about anyone they want to," said Brody.

On Sunday Sept. 15, the team played against Old Dominion University to a double overtime 0-0 tie. GMU, ranked fourth in the Mid-Atlantic Region, came into the game at 4-0. Goalie George Podgorney had a remarkable 26 saves for the Pirate effort.

Last weekend the team traveled to N.C. Wesleyan for the N.C. Wesleyan Soccer Classic. In the opening game ECU came away 1-0 victors. The Pirates dominated offensively with 35 shots on goal compared to 10 for Methodist. Forward David Skeffington scored the game's only goal on an assist from Palmier Grossi and Will Podolak. Coach Brody felt that the Pirates should have scored a possible five goals considering the number of shots taken.

In the finals the Pirates faced N.C. Wesleyan. The Pirates went into the game with three players injured and lost 3-0. Brody felt that even considering with a tired and injured team the Pirates played well below their potential.

The Pirates have now won their last three games played after losing their opening three. Their trend of improvement will be

tested this coming weekend as they face two of the strongest teams on their schedules.

On Saturday, September 28, ECU will travel to Washington, D.C. to face number six ranked American University. American is fielding two All-American players and will almost certainly be the strongest team on ECU's schedule. The Pirates' strategy will be to try and shut down the American offense with complete man-to-man coverage. Basically they will be playing for a draw, although if any shots come open

the Pirates will go for the ball. "We're going to go up there and see if we can just hold them," said Brody.

On Sunday the Pirates will turn from the finesse and sheer ability of the American team to the size and physical power of Navy. Although powerful, the Navy team has already lost to James Madison University, who the Pirates defeated 1-0. Brody looks for ECU to win this one. "I think if we go up there and are not intimidated by their size, that we can give them a good match."



The young ECU soccer team is showing much improvement this season, and currently stands 3-3 as they prepare for a tough road trip.

Shell Leads Men Netters Over UNC-W

By DAVID MCGINNESS

Behind the excellent play of top-seeded David Shell, the ECU men's tennis team defeated a tough UNC-Wilmington team 5-4 at the varsity courts yesterday.

In the No. 1 match, Shell defeated his old high school teammate Jeff Robins 7-6, 4-6, 6-1. The two played together at Robert E. Lee High School in Virginia. Robins played in the No. 1 spot, while Shell was the No. 2 man.

"I've played him in tournaments six times," Shell said. "And I have never beaten him before." Both men play an aggressive serve and volley game,

where Robins has an especially strong return of service. However, Shell would not give in as he got his racket on almost every ball that Robins hit.

The Pirates' second seed wasn't as fortunate. Freshman John Taylor was defeated by UNC-W's Terry Gratz in straight sets 7-5, 6-4. No. 3 seed Dan Lamont had to use a tiebreaker before defeating John Peacock 7-6, 6-1. Fourth seeded junior Greg Loyd posted a 6-4, 6-2 victory over Troy Furbay while fifth seeded freshman Paul Haggard took one set from UNC-W's Marcus Luke before dropping the match 5-7, 6-2, 6-1. No. 6 seed Jon Melhorn took care of Tom

Allen handily 6-1, 6-4.

After four of the top-six Pirate seeds took their respective singles matches, two of the three doubles' teams also posted wins. The Seahawks won the No. 1 doubles, but fell in both the second and third spots. The team of Robins-Gratz defeated Shell-Haggard 6-4, 6-1. ECU Freshman Timmy Morris and Melhorn had a three set match with Peacock-Furbay. Morris-Melhorn won 6-2, 4-6, 7-6. And the third-seeded team of senior John Anthony and sophomore Pat Campanaro breezed past Luke-Wooten 6-4, 6-3.

The Pirates will next see action this weekend when they travel to

Richmond, Va., to compete against Richmond, William & Mary and Campbell.

Mistake

We would like to correct a misprinted tennis score that appeared in an earlier edition of *The East Carolinian*. In the previous match between ECU and Belmont Abbey, ECU was victorious in that match 5-4. We're sorry for the error.

East Carolinian Pigskin Picks

| GAMF | ZIGGY MEWS | RICK MCCORMAC | TOM NORTON | K & W PRODUCTIONS | SCOTT COOPER |
|--|---|---|---|---|--|
| Temple ECU Miami Beach College South Carolina Georgia SMU UNC Florida N.E. State N.W. Louisiana Southern Miss Maryland Michigan Georgia Tech Clemson Alabama Tennessee Texas A & M Vermont Virginia SMU TCU | ECU by 10 Miami Georgia UNC NC State Southern Miss Maryland Clemson Alabama Texas A & M Virginia SMU | ECU by 7 Miami Georgia UNC NC State Southern Miss Maryland Clemson Alabama Texas A & M Virginia SMU | ECU by 3 Boston College Georgia UNC NC State Southern Miss Michigan Clemson Alabama Texas A & M Virginia SMU | ECU by 15 Miami Georgia UNC NC State Southern Miss Maryland Clemson Alabama Texas A & M Virginia SMU | ECU by 6 Miami Georgia UNC NC State Southern Miss Michigan Clemson Alabama Texas A & M Virginia SMU |
| BILL DAWSON | TODD PATTON | JOHN PETERSON | STANDINGS | LAST WEEK | RECORD |
| ECU by 14 Miami South Carolina SMU NC State Southern Miss Maryland Clemson Alabama Texas A & M Virginia SMU | ECU by 14 Boston College South Carolina UNC NC State Southern Miss Michigan Clemson Alabama Texas A & M Virginia SMU | ECU by 7 Boston College Georgia UNC NC State Southern Miss Michigan Clemson Alabama Texas A & M Virginia SMU | ZIGGY MEWS RICK MCCORMAC TOM NORTON K & W PRODUCTIONS SCOTT COOPER BILL DAWSON TODD PATTON JOHN PETERSON | 9-3 9-3 8-4 8-4 7-5 9-3 7-4 5-7 | 28-7 27-8 27-8 25-10 24-11 24-11 24-11 23-12 |

103 Eastbrook Drive
758 8883

THE King and Queen RESTAURANT

Pleasant Atmosphere
Fine Dining

WANTED

To share 2 bedroom condominium, 1/2 utilities & \$100 rent payment. Please call Kim or Wendy anytime at 752-7774.

FEMALE ROOMMATE: Christian roommate needed to share 2 bedroom duplex. \$135 includes utilities. 1 1/2 bath. Call 756-8676 after 5:30.

RIDE NEEDED: Looking for a ride to New Jersey for Fall Break. Can leave at 1 p.m. Oct. 18th. Will pay for part of the gas. Call 752-0796, ask for Dan.

REWARD: Free trip to Daytona plus commission money. WANTED: Organized group or individual to promote the number 1 Spring Break Trip to Daytona. If interested in our REWARD, call 1-800-453-9074. (M. MEDIA TEL #1) Or write: DESIGNERS OF TRAVEL, 1334 West Hampton Ave., Menomonee Falls, Wisc., 53051.

CORRESPONDENCE: My name is Robert L. Hollins and I am seeking friendship, understanding and a letter exchange with anyone that is willing to write! We can only be strangers once! I am a black male of 38. Write to: Robert L. Hollins, 06519 016, Delta Unit, F.P.S., P.O. Box 34550, Memphis, Tennessee 38184 0550.

Apple Records

204 East 5th St. Phone 756-1427

Open Mon-Sat 10-6

\$5.99 \$6.99

- Loverboy
- Bob Dylan
- Cheap Trick
- John Cafferty & Beaver Brown Band
- Bruce Springsteen
- Motley Crue
- John Cougar Mellencamp
- Stevie Ray Vaughan
- Jimmy Buffett
- April Wine
- A HA
- Squeeze
- Romantics
- Motels
- Starship
- Dio

— Plus Many Other New Releases On Sale —

SPECIAL TAPE DEALS

TDK SA90 2 Pack (High Bias) — \$5.99
SONY HF90 2 Pack (Normal Bias) — \$2.99

New! New! New! New! New! New! New! New!

Big Spender Program Discounts on Volume Purchases (6 or More Albums/Cassettes). Ask for Details.

★ Go PIRATES! Beat Temple! ★

The Best Deal At The Best Club In Town.

Student Special

\$25 per month

No Contracts
No Initiation Fee

Our Full Facility Co-Ed Club Features The Best In Weight Training & Instruction

- Aerobics
- Two Weight Rooms
- Steam Room
- Sauna
- Whirlpool
- Social Events
- Lockers
- Private Dressing Rooms
- Showers
- Professional Personal Instruction
- York Olympic Weights (Including Bench & Squat Machines)
- Dynacam Machines
- Exer-Bikes
- Therapeutic Massage
- Nutrition Instruction

Call Lynn or Dave For Free Visit! Today

SPA

Southpark Shopping Center
756-7991

Cable & Craft

BOOK SALE

5000-plus HARDBACK BOOKS
ALL SUBJECT MATTER
DATES RANGE FROM 1870 to 1960
Sat., Sept. 28th 10 a.m.
RAIN DATE OCT. 12th!

NEW YORK

Travel with ECU to the Big Apple

November 27-December 1, 1985

Spend your Thanksgiving holidays in style in New York . . . Macy's Parade, Broadway plays, galleries, museums, shopping, and touring the city. Prices for the trip are:

- \$ 99.00 per person in a quad occupancy room
- \$115.00 per person in a triple occupancy room
- \$130.00 per person in a twin occupancy room
- \$180.00 per person in a single occupancy room

Included in prices are transportation and hotel accommodations.

A limited number of theatre tickets for Radio City Music Hall, *Cats*, *The Odd Couple*, and *42nd Street* are reserved for purchasing in the Central Ticket Office.

Contact the ECU Central Ticket Office, 757-6611, ext. 266, for more information.

Sponsored by the Student Union Travel Committee

Szechuan Garden

PIRATE SPECIAL \$1.99*
LUNCHEON SPECIAL \$2.75

DINNER SPECIALS

| | | | |
|---------------------------------|--------|---|--------|
| Seafood with Chinese Vegetables | \$6.95 | Sealeg and Beef with Chinese Vegetables | \$5.95 |
|---------------------------------|--------|---|--------|

(Specials come with: hot and sour soup, chicken corn soup, or house special soup, steamed or fried rice, hot tea and fried banana.)

SUNDAY BUFFET
\$3.95 All You Can Eat

- Won Ton or Egg Drop Soup
- Chicken & Shrimp with Chinese Vegetables
- Fried Chinese Chicken Wings
- Chicken Chow Mein
- Sweet & Sour Pork
- Young Chow Fried Rice

100 E. 10th St. 757-1818

Mon.-Thurs. 11:30-9:30
FRI. 11:30-10:30
SAT. 5:00-10:30
SUN. 12:00-9:30

TAKE OUT ORDERS

The Tree House Restaurant

Super Salad Bar \$1.99

ALL YOU CAN EAT For The Month of September Until 10:00 p.m. 7 Days a Week

Sunday Night Lasagna Special \$2.99 ALL YOU CAN EAT

LAMBDA

Bud

FRIDAY SEPT

HOLY NOISE ORIGIN

has

The Sec

LAMBDA CHI ALPHA
AND

Budweiser

FRIDAY SEPT. 27 5:00-9:00

Thanks To Our Sponsors!

HOLY NOISE ORDINANCE...



IT'S THE
UBAS

Carlton Salvage
Washington, N.C.
1-800-682-3412



Crow's Nest
Good Luck Pirates,
Pluck The Owls!



california
concept
CORPORATION

EXPERT HAIR DESIGN
FOR
MEN AND WOMEN

1100 CHARLES BLVD.
GREENVILLE, N.C. 27834
TELEPHONE (919) 752-2967

Varsity Barber Shop
& Hairstyling

- Regular Haircut.....\$5.50
- Layer Haircut.....\$5.75
- Haircut & Style.....\$10.00

3 DOLLARS ADMITS ONE

I.D.'S REQUIRED • BEVERAGES PROVIDED •



U.B.E.
516 S. COTANCHE
GREENVILLE, N.C.

Carlton Salvage
Robersonville, N.C.
1-800-682-3412

STYLISTS
Ray Hodges
Randy Hodges

Hair Works

Open
Mon-Sat
756-7057

Charles St

Red Bank

Greenville

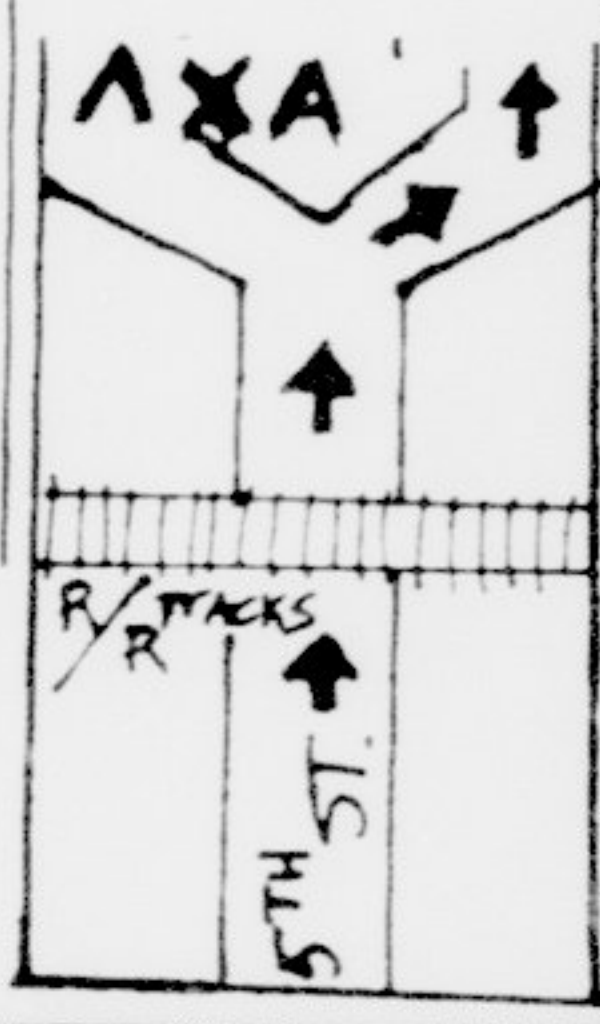
Greenville Athletic Club

5th St

Time Out

GREENVILLE, N.C.

HAPPY HOUR
Hamburger & Fries \$1.00
2 Hotdogs \$1.00
Longnecks .85c
32 oz. Draft \$1.25



EXPRESSIONS

Magazine

The Minority Affairs Publication of East Carolina University

OLD 5th BLDG EAST CAROLINA UNIVERSITY GREENVILLE NC 27834 TEL (919) 757-8927

has openings for the following positions:

- Managing Editor**
- Associate Editor**
- Photographer**
- Production Manager**

Applications will be available at
The Expressions office or Media Board
Secretary in the Publications Building.

103 Eastbrook Drive
758-8883

and
een
RESTAURANT

Atmosphere
Dining

Town.
Contracts
No Initiation Fee

atures
struction

mpic Weights
(Bench & Squat Machines)
Machines

ic Massage
struction

Center

ember 1, 1985

's Parade, Broadway
for the trip are:

ats, The Odd Couple,
Office.
more information.

er
Bar
99
CAN EAT
of September
7 Days a Week
Special

Service America Corporation . . . EAST CAROLINA UNIVERSITY DINING SERVICES

**MENDENHALL
SNACK BAR**

•••••

salad bar
hot sandwiches
daily specials
conveniently located
continuous service
7:30am - 7:30pm

•••••

east carolina
dining services

**COLLEGE
HILL
DINING
HALL**

convenient
comfortable
3 meals daily

east carolina dining services

the galley

deli sandwiches
steak sandwiches
pizza, ice cream
convenient
fast service
located on the hill

east carolina dining services

*buffet
dining*

*soup
salad
sandwiches*
mendenhall student center
east carolina dining services

CATERING

Banquets

Luncheons

Receptions

Coffee Breaks

east carolina dining services
757-6382

Blending Experience with Innovation

When the Allegheny Beverage Corporation combined Macke Food and Vending Services with Servomation Corporation, it created the finest blend in the food service industry — Service America Corporation.

From a single vending machine to a full service cafeteria, from a campus dining program to an executive dining room — Service America Corporation offers food service and vending operations to meet your every need.

Service America Corporation is fresh, yet established. Flexible, yet efficient. Creative, yet dependable. Experienced, yet innovative.

SERVICE AMERICA CORPORATION

East Carolina University Dining Services PO Box 3375 Greenville
A Subsidiary of the ALLEGHENY BEVERAGE CORPORATION