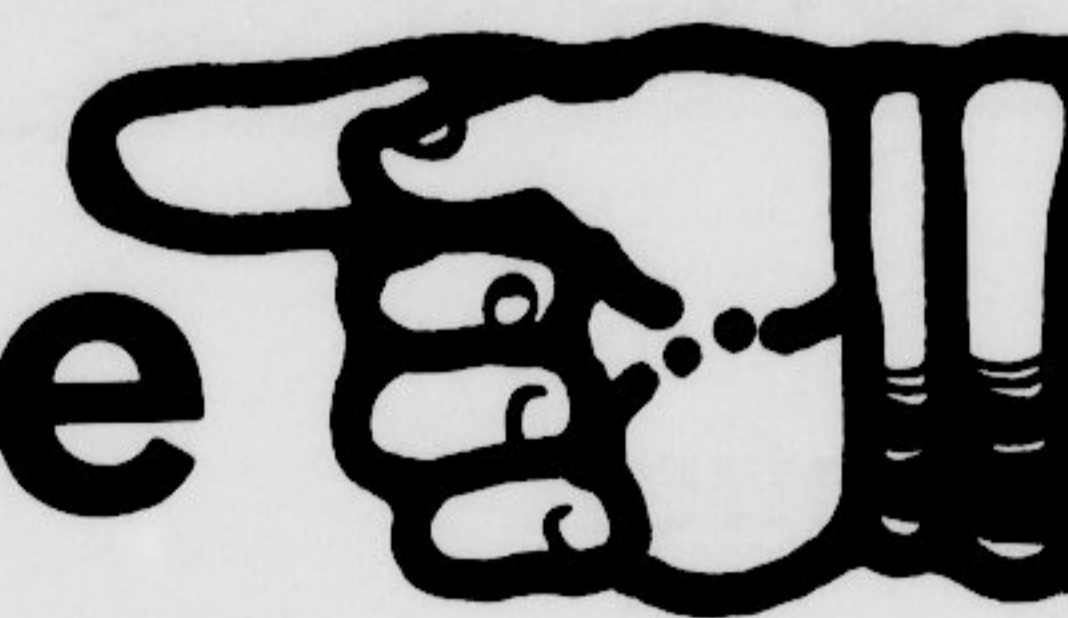


## Preregistration issue



### ACCT (Accounting)

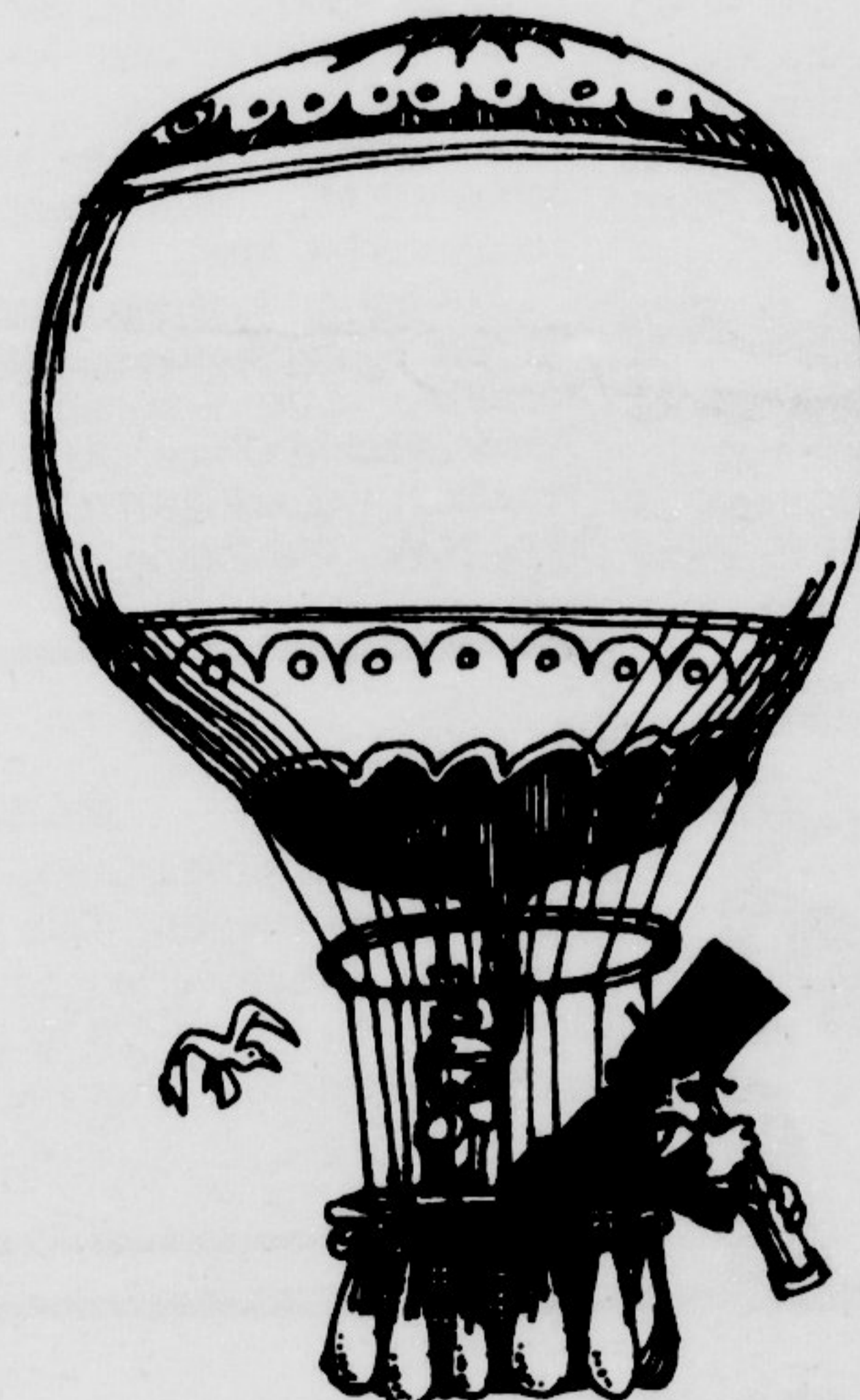
- 122 COMPUTER SCIENCE (MWF 8:00) (3)
- 122 COMPUTER SCIENCE (MWF 9:00) (3)
- 122 COMPUTER SCIENCE (MWF 10:00) (3)
- 122 COMPUTER SCIENCE (MWF 11:00) (3)
- 122 COMPUTER SCIENCE (TTH 9:30-11:00) (3)
- 122 COMPUTER SCIENCE (TTH 12:30-2:00) (3)
- 122 COMPUTER SCIENCE (TTH 11:00-12:30) (3)
- 140 PRIN OF ACCT I (MWF 10:00) (3)
- 140 PRIN OF ACCT I (MWF 1:00) (3)
- 140 PRIN OF ACCT I (TTH 9:30-11:00) (3)
- 140 PRIN OF ACCT I (MWF 8:00) (3)
- 140 PRIN OF ACCT I (MWF 9:00) (3)
- 140 PRIN OF ACCT I (MWF 11:00-12:30) (3)
- 140 PRIN OF ACCT II (TTH 11:00-12:30) (3)
- 141 PRIN OF ACCT II (TTH 2:00-3:30) (3)
- 141 PRIN OF ACCT II (TTH 9:30-11:00) (3)
- 141 PRIN OF ACCT II (MWF 9:00) (3)
- 252 FINANCIAL INFOR SYS (TTH 9:30-11:00) (3)
- 252 FINANCIAL INFOR SYS (MWF 9:00) (3)
- 252 FINANCIAL INFOR SYS (MWF 10:00) (3)
- 252 FINANCIAL INFOR SYS (TTH 2:00-3:30) (3)
- 253 MANAGEMENT INFOR SYS (MWF 10:00) (3)
- 253 MANAGEMENT INFOR SYS (MWF 1:00) (3)
- 253 MANAGEMENT INFOR SYS (MWF 2:00) (3)
- 255 INTERMED ACCT I (MWF 12:00) (3)
- 256 INTERMED ACCT II (MWF 1:00) (3)
- 259 BUS INFOR SYS (TTH 12:30-2:00) (3)
- 272 FUND ACCOUNTING (MWF 2:00) (3)
- 290 INCOME TAX (TTH 11:00-12:30) (3)
- 362 COST ACCOUNTING (MWF 3:00) (3)
- 367 ADVANCED AUDITING (TTH 9:30-11:00) (3)
- 390 FED INCOME TAX (MWF 8:00) (3)
- 395 TOPICS IN ACCT PRIN (MWF 9:00) (3)
- 455 ACCT ANAL DEC MAKING (M 6:30-9:30) (3)
- 462 ACCT THEORY II (MW 3:30-5:00) (3)
- 469 FEDERAL TAXES (MW 5:00-6:30) (3)

Fountainhead hereby presents the first of its twice-yearly Preregistration Issues, perhaps the few issues of the newspaper that students save, cherish and drag with them into their respective department lineups.

Everything's here—the course listings, drop-add and change of major forms. Relish it: the chance won't strike again until Spring Preregistration.

Enjoy, and sign up for something good...

Fountainhead



### AERO (Aerospace Studies)

- 12 US MIL FORCES (T 9:00) (1)
- 12 US MIL FORCES (T 10:00) (1)
- 12L CORPS TNG LAB (T 12:00) (1)
- 12L CORPS TNG LAB (TBA) (1)
- 112 US MIL FORCES (T 9:00) (1)
- 112 US MIL FORCES (T 10:00) (1)
- 112L CORPS TNG LAB (T 12:00) (1)
- 112L CORPS TNG LAB (TBA) (1)
- 212 G & D OF AERO POWER (MWF 11:00) (3)
- 212 G & D OF AERO POWER (MWF 12:00) (3)
- 212L CORPS TNG LAB (T 12:00) (1)
- 212L CORPS TNG LAB (TBA) (1)
- 392 AF LEADERSHIP (MWF 9:00) (3)
- 392 AF LEADERSHIP (MWF 10:00) (3)
- 392L CORPS TNG LAB (T 12:00) (1)
- 392L CORPS TNG LAB (TBA) (1)

### ANTH (Anthropology)

- 10 SOCIETIES, WORLD (M-F 9:00) (5)
- 10 SOCIETIES, WORLD (M-F 12:00) (5)
- 70 CULT & SOC AF (MWF 2:00) (3)
- 121 INTR ANTH (MWF 9:00) (3)
- 121 INTR ANTH (MWF 11:00) (3)
- 122 INTR ANTH (MWF 10:00) (3)
- 122 INTR ANTH (MWF 2:00) (3)
- 231 THE N AM INDIAN (MWF 9:00) (3)
- 232 THE S AM INDIAN (MWF 11:00) (3)
- 236 PEOPLES OF MESOAMERICA (MWF 1:00) (3)
- 250 PEOPLES OF S PACIFIC (MWF 8:00) (3)
- 306G ARCH METH & THEORY (M 2:00-5:00) (3)
- 310A READ: PREHIST & PHYS ANTH (TBA) (1)
- 310B READ: PREHIST & PHYS ANTH (TBA) (1)
- 310C READ: PREHIST & PHYS ANTH (TBA) (1)
- 311A READ: CULT ANTH & LING (TBA) (1)
- 311B READ: CULT ANTH & LING (TBA) (1)
- 311C READ: CULT ANTH & LING (TBA) (1)
- 312 IND STUDY - DIR RES, ED RES (MWF 1:00) (3)
- 412A IND READ & RES (TBA) (3)
- 412B IND READ & RES (TBA) (3)
- 412C IND READ & RES (TBA) (3)

### ART (Art)

- 15 COLOR & DESIGN (M-F 12:00) (3)
- 15 COLOR & DESIGN (M-F 12:00) (3)
- 15 COLOR & DESIGN (M-F 1:00) (3)
- 15 COLOR & DESIGN (M-F 1:00) (3)
- 15 COLOR & DESIGN (M-F 2:00) (3)
- 15 COLOR & DESIGN (TTH 8:00-10:00; F 9:00) (3)
- 15 COLOR & DESIGN (M-F 3:00) (3)
- 15 COLOR & DESIGN (TTH 2:00-4:00; F 3:00) (3)
- 15A COLOR & DESIGN (M-F 12:00) (3)
- 22\*1 3-D DESIGN (MW 8:00-10:00; F 8:00) (3)
- 22\*2 3-D DESIGN (TTH 8:00-10:00; F 9:00) (3)
- 22\*3 3-D DESIGN (TTH 10:00-12:00; F 11:00) (3)
- 22\*4 3-D DESIGN (TTH 12:00-2:00; F 1:00) (3)
- 25 DRAWING (MW 8:00-10:00; F 8:00) (3)
- 26\*1 FIGURE DRAWING (TTH 10:00-12:00; F 11:00) (3)
- 26\*2 FIGURE DRAWING (TTH 12:00-2:00; F 1:00) (3)
- 26\*3 FIGURE DRAWING (MW 12:00-2:00; F 12:00) (3)
- 26\*4 FIGURE DRAWING (MW 2:00-4:00; F 2:00) (3)
- 35\*1 DRAWING (TTH 8:00-10:00; F 9:00) (3)
- 35\*2 DRAWING (MW 10:00-12:00; F 10:00) (3)
- 35\*3 DRAWING (TTH 10:00-12:00; F 11:00) (3)
- 35\*4 DRAWING (MW 12:00-2:00; F 12:00) (3)
- 35\*5 DRAWING (TTH 12:00-2:00; F 1:00) (3)
- 35\*6 DRAWING (MW 2:00-4:00; F 2:00) (3)
- 88\*1 PRINT SURVEY (M-F 10:00) (3)
- 88\*2 PRINT SURVEY (M-F 11:00) (3)
- 88\*3 PRINT SURVEY (M-F 12:00) (3)
- 89\*1 PAINT SURVEY (TTH 8:00-10:00; F 9:00) (3)
- 89\*2 PAINT SURVEY (MW 10:00-12:00; F 10:00) (3)
- 89\*3 PAINT SURVEY (TTH 2:00-4:00; F 3:00) (3)
- 90\*1 SCULPTURE SURVEY (MW 8:00-10:00; F 8:00) (3)
- 90\*2 SCULPTURE SURVEY (MW 10:00-12:00; F 10:00) (3)
- 91\*1 CERAMIC SURVEY (MW 8:00-10:00; F 8:00) (3)
- 91\*2 CERAMIC SURVEY (TTH 10:00-12:00; F 11:00) (3)
- 92\*1 DESIGN FOR THE HOME (MW 10:00-12:00; F 10:00) (3)
- 92\*2 DESIGN FOR THE HOME (MW 2:00-4:00; F 2:00) (3)
- 92\*3 DESIGN FOR THE HOME (TTH 2:00-4:00; F 3:00) (3)
- 93 INTRO TO LETTERING (MW 10:00-12:00; F 10:00) (3)
- 94\*1 INTRO TO ADV DES (MW 8:00-10:00; F 8:00) (3)
- 94\*2 INTRO TO ADV DES (MW 2:00-4:00; F 2:00) (3)
- 95\*1 INTRO TO CRAFTS (TTH 8:00-10:00; F 9:00) (3)
- 95\*2 INTRO TO CRAFTS (MW 10:00-12:00; F 10:00) (3)
- 96\*1 INTRO TO TEXTILES (MW 10:00-12:00; F 10:00) (3)
- 96\*2 INTRO TO TEXTILES (TTH 10:00-12:00; F 11:00) (3)
- 100A,B SCULPTURE STUDIO I (MW 12:00-2:00; F 12:00) (3)
- 108A PRINT STUDIO I (TTH 8:00-10:00; F 9:00) (3)
- 108B PRINT STUDIO I (MW 1:00-3:00; F 1:00) (3)
- 110A,B SCULP STUDIO II (MW 12:00-2:00; F 12:00) (3)
- 111A,B CERAMIC STUDIO I (TTH 12:00-2:00; F 1:00) (3)
- 113A ART HIST SURVEY (MWF 10:00) (3)
- 113B1 ART HIST SURVEY (MWF 1:00) (3)
- 113B2 ART HIST SURVEY (MWF 2:00) (3)
- 117 ART APPRECIATION (MW 11:00) (2)
- 117 ART APPRECIATION (TTH 11:00) (2)
- 117 ART APPRECIATION (MW 12:00) (2)
- 117 ART APPRECIATION (TTH 12:00) (2)
- 117 ART APPRECIATION (TTH 3:00) (2)
- 117 ART APPRECIATION (TTH 12:00-2:00; F 1:00) (3)
- 121A,B CERAMIC STUDIO II (TTH 8:00-10:00; F 9:00) (3)
- 123 LETTERING DESIGN (TTH 8:00-10:00; F 11:00) (3)
- 124 ADVERT DESIGN (TTH 10:00-12:00; F 11:00) (3)
- 126\*1 FIGURE DRAWING (MW 8:00-10:00; F 8:00) (3)
- 126\*2 FIGURE DRAWING (MW 10:00-12:00; F 10:00) (3)
- 126\*3 FIGURE DRAWING (TTH 2:00-4:00; F 3:00) (3)
- 128A PRINT STUDIO II (MW 1:00-3:00; F 1:00) (3)
- 128B PRINT STUDIO II (TTH 8:00-10:00; F 9:00) (3)
- 129A,B PAINT STUDIO I (MW 8:00-10:00; F 8:00) (3)
- 131A,B CERAMIC STUDIO III (TTH 12:00-2:00; F 1:00) (3)
- 132A INTERIOR DES STU II (MW 12:00-2:00; F 12:00) (3)
- 132B INTERIOR DES STU II (TTH 12:00-2:00; F 1:00) (3)
- 139A,B PAINT STUDIO II (MW 1:00-3:00; F 1:00) (3)
- 150 OBSERVATION (F 4:00) (1)
- 152\*1 ITAL REN AH 15-1600 (MWF 8:00) (3)
- 152\*2 ITAL REN AH 15-1600 (MWF 9:00) (3)
- 159A,B TEXTILE DESIGN I (M-F 1:00) (3)
- 160A,B PHOTOGRAPHY (TTH 8:00-10:00; F 9:00) (3)
- 168A,B CRAFTS DESIGN I (MW 8:00-10:00; F 8:00) (3)
- 170 TYPOGRAPHY (TTH 12:00-2:00; F 1:00) (3)
- 201A,B JEWELRY DESIGN (TTH 10:00-12:00; F 11:00) (3)
- 209A,B TEXTILE DESIGN & WEAV (MW 11:00-1:00; F 11:00) (3)
- 211A,B,C CERAMIC STUDIO IV (MW 12:00-2:00; F 2:00) (3)
- 221 MEDIA & TECH (MWF 8:00-10:00) (3)
- 228A PRINT STUDIO III (TTH 8:00-10:00; F 9:00) (3)
- \*117 ART APPRECIATION (MW 3:00) (2)
- \*117 ART APPRECIATION (TTH 2:00) (2)



Biology (Cont.)

- 2288 PRINT STUDIO III (TTh 1:00-3:00; F 2:00) (3)
- 229A,B PAINT STUDIO III (MW 8:00-10:00; F 8:00) (3)
- 238A PRINT STUDIO IV (TTh 1:00-3:00; F 2:00) (3)
- 238B PRINT STUDIO IV (MW 1:00-3:00; F 1:00) (3)
- 238C PRINT STUDIO IV (TTh 8:00-10:00; F 9:00) (3)
- 239A,B,C PAINT STUDIO IV (TTh 10:00-12:00; F 11:00) (3)
- 248A PRINT STUDIO V (TTh 8:00-10:00; F 9:00) (3)
- 248B PRINT STUDIO V (TTh 1:00-3:00; F 2:00) (3)
- 248C PRINT STUDIO V (TTh 8:00-10:00; F 9:00) (3)
- 249A,B,C PAINT STUDIO V (TTh 10:00-12:00; F 11:00) (3)
- 250A,B SCULPTURE STUDIO III (MW 12:00-2:00; F 12:00) (3)
- 260A,B SCULP STUDIO IV (TTh 2:00-4:00; F 3:00) (3)
- 261A,B,C CERAMIC STUDIO V (MW 12:00-2:00; F 12:00) (3)
- 268 ART FOR ELEM SCHOOL (M-F 10:00-12:00) (5)
- 268 ART FOR ELEM SCHOOL (M-F 10:00-12:00) (5)
- 268 ART FOR ELEM SCHOOL (M-F 12:00-2:00) (5)
- 268 ART FOR ELEM SCHOOL (M-F 2:00-4:00) (5)
- 268A ART FOR ELEM SCHOOL (M-F 2:00-4:00) (5)
- 269\*1 PARTICIPATION (MW 4:00) (1)
- 269\*2 PARTICIPATION (TTh 4:00) (1)
- 271\*1 N BAROQUE ART & ARCH (MWF 11:00) (3)
- 271\*2 N BAROQUE ART & ARCH (MWF 12:00) (3)
- 272 19TH C PAINT (MWF 1:00) (3)
- 275 20TH CENT ARCH (MWF 2:00) (3)
- 290A,B,C COM ART STUDIO IV (MW 12:00-2:00; F 12:00) (3)
- 308GA PRINT STUDIO VI (MW 1:00-3:00; F 1:00) (3)
- 308GB PRINT STUDIO VI (TTh 8:00-10:00; F 9:00) (3)
- 308GC PRINT STUDIO VI (TTh 1:00-3:00; F 2:00) (3)
- 314 READING SEMINAR (T 3:00-6:00) (3)
- 319GA,B,C PAINT STUDIO VI (TTh 10:00-12:00; F 11:00) (3)
- 320A,B,C SCULP STUDIO V (TTh 2:00-4:00; F 3:00) (3)
- 321GA,B,C CERAMIC STUD VI (MW 12:00-2:00; F 12:00) (3)
- 322A,B,C ADVANCED PHOTO (TTh 10:00-12:00; F 11:00) (3)
- 323M ART IN HS (TTh 8:30-10:00) (3)
- 332A INTER DES STUD V (MW 8:00-10:00; F 8:00) (3)
- 332B,C INTER DES STUD V (TTh 8:00-10:00; F 9:00) (3)
- 350GA,B,C SCULP STUD VI (TTh 2:00-4:00; F 3:00) (3)
- 362A,B,C COM ART STUD V (MW 10:00-12:00; F 10:00) (3)
- 410-415 PROB IN SCULPT (MW 12:00-2:00; F 12:00) (3)
- 420-425 PROB IN PRINTS (TBA) (3)
- 430-435 PROB IN CERAMICS (MW 10:00-12:00; F 10:00) (3)
- 440-445 PROB IN PAINTING (MW 3:00-5:00; F 3:00) (3)
- 450-455 PROB IN DESIGN (TBA) (3)
- 460-465 PROB IN ART HIST (TTh 1:00-2:30) (3)
- 491 SUPERV OF ART ED (TBA) (3)
- 499A,B,C THESIS SEMINAR (TBA) (3)

BIOL (Biology)

- 70 PRIN BIOL I (MTTh 10:00) (3)
- 70L LAB (F 8:00-11:00) (1)
- 70 PRIN BIOL I (MTTh 10:00) (3)
- 70L LAB (Th 8:00-11:00) (1)
- 70 PRIN BIOL I (MTTh 10:00) (3)
- 70L LAB (T 12:00-3:00) (1)
- 70 PRIN BIOL I (MwTh 11:00) (3)
- 70L LAB (Th 12:00-3:00) (1)
- 70 PRIN BIOL I (MwTh 11:00) (3)
- 70L LAB (M 3:00-6:00) (1)
- 70 PRIN BIOL I (MwTh 11:00) (3)
- 70L LAB (T 12:00-3:00) (1)
- 70L LAB (Th 12:00-3:00) (1)
- 70L LAB (T 3:00-6:00) (1)
- 70L LAB (W 3:00-6:00) (1)
- 70L LAB (Th 3:00-6:00) (1)
- 70L LAB (Th 3:00-6:00) (1)
- 70L LAB (F 8:00-11:00) (1)
- 70L LAB (T 8:00-11:00) (1)
- 70L LAB (W 3:00-6:00) (1)
- 70L LAB (W 8:00-11:00) (1)
- 71 PRIN BIOL II (MWF 9:00) (3)
- 71L LAB (T 8:00-11:00) (1)
- 71 PRIN BIOL II (MWF 9:00) (3)
- 71L LAB (W 8:00-11:00) (1)
- 71 PRIN BIOL II (MWF 9:00) (3)
- 71L LAB (M 12:00-3:00) (1)
- 71 PRIN BIOL II (MTTh 12:00) (3)
- 71L LAB (T 12:00-3:00) (1)
- 71 PRIN BIOL II (MTTh 12:00) (3)
- 71L LAB (Th 12:00-3:00) (1)
- 71 PRIN BIOL II (MTTh 12:00) (3)
- 71L LAB (M 3:00-6:00) (1)
- 71 PRIN BIOL II (MTTh 2:00) (3)
- 71L LAB (T 3:00-6:00) (1)
- 71 PRIN BIOL II (MTTh 2:00) (3)
- 71L LAB (W 3:00-6:00) (1)
- 71 PRIN BIOL II (MTTh 2:00) (3)
- 71L LAB (T 8:00-11:00) (1)
- 71 PRIN BIOL II (MTTh 3:00) (3)
- 71L LAB (Th 8:00-11:00) (1)
- 71 PRIN BIOL II (MTTh 3:00) (3)
- 71L LAB (T 12:00-3:00) (1)
- 71 PRIN BIOL II (MTTh 3:00) (3)
- 71L LAB (Th 12:00-3:00) (1)
- 71L LAB (M 3:00-6:00) (1)
- 71L LAB (T 3:00-6:00) (1)
- 71L LAB (W 3:00-6:00) (1)

- 71L LAB (Th 3:00-6:00) (1)
- 71L LAB (T 12:00-3:00) (1)
- 71L LAB (Th 12:00-3:00) (1)
- 71L LAB (M 3:00-6:00) (1)
- 71L LAB (T 3:00-6:00) (1)
- 71L LAB (W 3:00-6:00) (1)
- 71L LAB (Th 3:00-6:00) (1)
- 78 SCI OF BIOL II (MWF 9:00) (6)
- 78L LAB (MTh 2:00-5:00) (0)
- 90 PERSPEC IN BIOL (MTThF 1:00) (4)
- 90 PERSPEC IN BIOL (MTThF 1:00) (4)
- 90 PERSPEC IN BIOL (MTThF 1:00) (4)
- 110 FUND OF MICROBIOL (TTh 1:00) (4)
- 110L LAB (MTh 8:00-10:00) (0)
- 110 FUND OF MICROBIOL (TTh 1:00) (4)
- 110L LAB (TTh 4:00-6:00) (0)
- 110L LAB (MW 2:00-4:00) (0)
- 110L LAB (MW 4:00-6:00) (0)
- 110L LAB (TF 8:00-10:00) (0)
- 121 HU PHYS & ANAT I (WF 10:00) (3)
- 121L LAB (T 10:00-12:00) (0)
- 121 HU PHYS & ANAT I (WF 10:00) (3)
- 121L LAB (Th 10:00-12:00) (0)
- 121 HU PHYS & ANAT I (WF 10:00) (3)
- 121L LAB (M 3:00-5:00) (0)
- 122 HU PHYS & ANAT II (TTh 8:00) (3)
- 122L LAB (W 8:00-10:00) (0)
- 122 HU PHYS & ANAT II (TTh 8:00) (3)
- 122L LAB (F 8:00-10:00) (0)
- 122 HU PHYS & ANAT II (TTh 8:00) (3)
- 122L LAB (T 10:00-12:00) (0)
- 122 HU PHYS & ANAT II (TTh 8:00) (3)
- 122L LAB (Th 10:00-12:00) (0)
- 123 HU PHYS & ANAT III (TTh 9:00) (3)
- 123L LAB (W 8:00-10:00) (0)
- 123 HU PHYS & ANAT III (TTh 9:00) (3)
- 123L LAB (F 8:00-10:00) (0)
- 160 PRIN GROW & DEVELOP (MWF 11:00) (4)
- 160L LAB (F 2:00-5:00) (0)
- 160L LAB (Th 2:00-5:00) (0)
- 181 BIOL OF INVERT (MWF 11:00) (4)
- 181L LAB (Th 2:00-5:00) (0)
- 182 BIOL OF VERT (MWF 9:00) (4)
- 182L LAB (T 2:00-5:00) (0)
- 182L LAB (M 2:00-5:00) (0)
- 183 BIOL OF NON-VAS PLTS (MWF 10:00) (4)
- 183L LAB (T 3:00-6:00) (0)
- 215 CELL PHYSIOL (MTThF 12:00) (5)
- 215L LAB (T 2:00-5:00) (0)
- 215L LAB (M 2:00-5:00) (0)
- 300G RADIOTRACTECH IN BIOL (MWF 10:00) (4)
- 300GL LAB (F 2:00-5:00) (0)
- 300GL LAB (T 2:00-5:00) (0)
- 313A RES PROBLEMS (TBA) (3)
- 313B RES PROBLEMS (TBA) (3)
- 320G INVERT Zool (MTTh 8:00) (4)
- 320GL LAB (Th 9:00-12:00) (0)
- 330G HEREDITY (MTTh 12:00) (3)
- 331GL HEREDITY LAB (W 2:00-5:00) (1)
- 348G CYTOLOGY (MTTh 1:00) (4)
- 348GL LAB (M 2:00-5:00) (0)
- 353 COMP VERT ANAT (TTh 8:00) (5)
- 353L LAB (TTh 1:00-4:00) (0)
- 372G PRIN BIOL III (MWF 11:00) (3)
- 381G INTERMED METAB (MWF 9:00) (4)
- 381GL LAB (Th 2:00-5:00) (0)
- 381GL LAB (W 2:00-5:00) (0)
- 385G BIOMETRY (MW 7:00-8:30 P.M.) (3)
- 388G MICROB PHYSIOL (MWF 8:00) (4)
- 388GL LAB (T 2:00-5:00) (0)
- 390G INTERNSHIP (TBA) (3)
- 400 SEMINAR (TBA) (1)
- 405 DIST OF ORGANISMS (S 9:00-12:00) (3)
- 450A SPEC PROBLEMS (TBA) (3)
- 450B SPEC PROBLEMS (TBA) (3)
- 450C SPEC PROBLEMS (TBA) (3)
- 490 INTERNSHIP (TBA) (3)
- 499A THESIS (TBA) (3)
- 499B THESIS (TBA) (3)
- 499C THESIS (TBA) (3)
- 499R RESIDENCY (TBA) (0)

BUSA (Business Administration)

- 10 INTRODUCT BUSINESS (MWF 9:00) (3)
- 10 INTRODUCT BUSINESS (TTh 8:00-9:30) (3)
- 10 INTRODUCT BUSINESS (MWF 12:00) (3)
- 10 INTRODUCT BUSINESS (TTh 9:30-11:00) (3)
- 10 INTRODUCT BUSINESS (MWF 1:00) (3)
- 10 INTRODUCT BUSINESS (TTh 11:00-12:30) (3)
- 10 INTRODUCT BUSINESS (MWF 10:00) (3)
- 224 LEGAL ENV OF BUSI (TTh 12:30-2:00) (3)
- 224 LEGAL ENV OF BUSI (MWF 2:00) (3)
- 224 LEGAL ENV OF BUSI (TTh 9:30-11:00) (3)
- 224 LEGAL ENV OF BUSI (MWF 8:00) (3)



PSI CHI,  
psychology,  
ay, Oct. 9  
y, Oct. 11  
members will  
members are

s Club will  
in CU 206  
r 1973-74  
members

er will be  
the social  
his short  
be facili-

The Night  
in Garrett  
upon the  
er outdoor

her week.  
Sponsored  
t meeting  
inister, at

12

ern  
BLVD.

y Out

## Busi. Admin. (Cont.)

- 224 LEGAL ENV OF BUSI (MWF 10:00) (3)  
 244 ORGANIZATION THEOR (MWF 10:00) (3)  
 244 ORGANIZATION THEOR (MWF 1:00) (3)  
 244 ORGANIZATION THEOR (TTh 12:30-2:00) (3)  
 245 INTERPERS RELATION (MWF 9:00) (3)  
 245 INTERPERS RELATION (TTh 9:30-11:00) (3)  
 245 INTERPERS RELATION (TTh 2:00-3:30) (3)  
 281 MARKET MANAGEMT I (MWF 9:00) (3)  
 281 MARKET MANAGEMT I (TTh 2:00-3:30) (3)  
 281 MARKET MANAGEMT I (MWF 11:00) (3)  
 282 MARKET MANAGEMT II (TTh 9:30-11:00) (3)  
 282 MARKET MANAGEMT II (TTh 12:30-2:00) (3)  
 282 MARKET MANAGEMT II (MWF 10:00) (3)  
 286 REAL EST APPRAISAL (M-F 3:00) (5)  
 287 REAL EST MAN BROKE (M-F 1:00) (5)  
 335 INTER BUSINESS (M-F 11:00) (5)  
 347 COMPENSATION ADMIN (MWF 11:00) (3)  
 356 CASES MARKET STRAT (MWF 1:00) (3)  
 365 COMM BK MANAGEMENT (MWF 10:00) (3)  
 366 MARKET RESR (MWF 2:00) (3)  
 366 MARKET RESR (TTh 2:00-3:30) (3)  
 372 OPERATIONS MANAGEMT (TTh 8:00-9:30) (3)  
 384 BUSINESS POLICY (MWF 12:00) (3)  
 384 BUSINESS POLICY (TTh 11:00-12:30) (3)  
 396 TOPICS IN MGMT (MWF 1:00) (3)  
 442 HUM RELAT IN BUSI (TTh 2:00-3:30) (3)  
 443 ENTREPRENEURSHIP (TTh 12:30-2:00) (3)  
 451 CONT PROB IN MARKET (T 6:30-9:30) (3)  
 456 ADV MARKET MANAGEMT (T 6:30-9:30) (3)  
 474 PUBLIC RELAT (MWF 1:00) (3)  
 490 MGMT INFO SYSTEMS (TTh 3:30-5:00) (3)  
 491 DECISION THEOR (Th 6:30-9:30) (3)  
 497A,B,C INDEPENDENT STUDIES (TBA) (3)

## CHEM (Chemistry)

- 24 GEN DESCRIPT CHEM (MTWTh 1:00) (4)  
 25 GEN DESCRIPT CHEM (MWF 11:00) (3)  
 25 GEN DESCRIPT CHEM (MWF 2:00) (3)  
 25L LAB (T 2:00-5:00) (1)  
 25L LAB (T 2:00-5:00) (1)  
 25L LAB (Th 8:00-11:00) (1)  
 25L LAB (Th 2:00-5:00) (1)  
 25L LAB (Th 2:00-5:00) (1)  
 34 BASIC GEN CHEM (Mw 2:00-3:30) (3)  
 34L LAB (Th 8:00-11:00) (1)  
 \*34L LAB (Th 2:00-5:00) (1)  
 35 BASIC ORG CHEM (MWF 9:00) (3)  
 35 BASIC ORG CHEM (MWF 10:00) (3)  
 35 BASIC ORG CHEM (MWF 2:00) (3)  
 35 BASIC ORG CHEM (TTh 2:00-3:30) (3)  
 35L LAB (M 8:00-11:00) (1)  
 35L LAB (M 8:00-11:00) (1)  
 35L LAB (M 2:00-5:00) (1)  
 35L LAB (T 8:00-11:00) (1)  
 35L LAB (T 2:00-5:00) (1)  
 35L LAB (W 8:00-11:00) (1)  
 35L LAB (W 2:00-5:00) (1)  
 35L LAB (Th 8:00-11:00) (1)  
 35L LAB (Th 2:00-5:00) (1)  
 35L LAB (F 8:00-11:00) (1)  
 64 GEN CHEM QUAL ANAL (MWF 11:00) (3)  
 64L LAB (M 2:00-5:00) (1)  
 64L LAB (T 8:00-11:00) (1)  
 64L LAB (W 2:00-5:00) (1)  
 65 GEN CHEM QUAL ANAL (MWF 8:00) (3)  
 65 GEN CHEM QUAL ANAL (MWF 10:00) (3)  
 65 GEN CHEM QUAL ANAL (MWF 1:00) (3)  
 65L LAB (M 8:00-11:00) (1)  
 65L LAB (M 2:00-5:00) (1)  
 65L LAB (M 2:00-5:00) (1)  
 65L LAB (T 8:00-11:00) (1)  
 65L LAB (T 2:00-5:00) (1)  
 65L LAB (T 2:00-5:00) (1)  
 65L LAB (W 2:00-5:00) (1)  
 65L LAB (W 2:00-5:00) (1)  
 65L LAB (Th 8:00-11:00) (1)  
 65L LAB (Th 2:00-5:00) (1)  
 144 ORGANIC CHEMISTRY (MWF 1:00) (3)  
 144L LAB (T 2:00-5:00) (1)  
 144L LAB (Th 2:00-5:00) (1)  
 145 ORGANIC CHEMISTRY (MWF 9:00) (3)  
 145 ORGANIC CHEMISTRY (MWF 1:00) (3)  
 145L LAB (Mw 2:00-5:00) (2)  
 145L LAB (Mw 2:00-5:00) (2)  
 145L LAB (TTh 8:00-11:00) (2)  
 145L LAB (TTh 2:00-5:00) (2)  
 220 ELEM INORGAN CHEM (MWF 11:00) (3)  
 220L LAB (T 2:00-5:00) (1)  
 253 INTROD PHYS CHEM (MWF 10:00) (3)  
 253L LAB (M 2:00-5:00) (1)  
 262 PHYSICAL CHEMISTRY (MTThF 9:00) (4)  
 262L LAB (W 2:00-5:00) (1)  
 321G ADV INORGAN CHEM (TTh 2:00) (2)  
 321GL LAB (Th 2:00-5:00) (1)



- 344G ADVAN ORGANIC CHEM (MWF 9:00) (3)  
 344GL LAB (TBA) (1)  
 \* 34L BASIC GEN CHEM LAB (T 2:00-5:00) (1)  
 394 INDEPENDENT STUDY (TBA) (4)  
 395 RESEARCH PROB CHEM (TBA) (4)  
 416 ADV ANALYT CHEM (TBA) (3)  
 488 INTROD RESEARCH (TBA) (5)  
 490 CHEMISTRY SEMINAR (F 3:00) (1)  
 495 RESEARCH (TBA) (5)  
 499 THESIS (TBA) (3)  
 499R RESIDENCE (TBA) (0)

## COHE (Community Health)

- 369 THEO OF PRAC COHE (Mw 8:30-10:00) (4)  
 369L LAB (F 8:00-11:00) (0)  
 375A INDEPENDENT STUDY (T 8:00-12:00; Th 10:00-12:00) (3)

## CORS (Correctional Services)

- 100 CRIM JUST SYS (TTh 8:00-9:30) (3)  
 100 CRIM JUST SYS (TTh 10:00-11:30) (3)  
 100 CRIM JUST SYS (MWF 10:00) (3)  
 200 INTRO LAW ENFORCMT (TTh 10:00-11:30) (3)  
 201 ISS & PROB LAW ENF (TTh 3:30-5:00) (3)  
 210 CORR INSTITU I (T 6:30-9:30) (3)  
 220 COM CORR SERV (Mw 2:00-3:30) (3)  
 220 COM CORR SERV (M 6:30-9:30) (3)  
 225 CRIM OFFENDER (Mw 9:00-10:30) (3)  
 225 CRIM OFFENDER (Th 6:30-9:30) (3)  
 250 ADD CRIME & CRIM (TTh 2:00-3:30) (3)  
 300 LAW LAW ENF & COR (TTh 2:00-3:30) (3)  
 302 POLICE ORGAN & ADM (Th 6:30-9:30) (3)  
 330 JUV CRT PHIL (Mw 9:00-10:30) (3)  
 350 PRIN OF CRIM LAW (W 6:30-9:30) (3)

## DRAM (Drama)

- 21B BALLET I (MTWTh 10:00-11:30) (3)  
 22A CONTEMP DANCE (MTWTh 3:30-5:00) (3)  
 100 INTRO THEATRE (TTh 10:00) (2)  
 100 INTRO THEATRE (TTh 10:00) (2)  
 100 INTRO THEATRE (Mw 11:00) (2)  
 121B BALLET II (MTWTh 2:00-3:30) (3)  
 131B STAGE SCENERY (MWF 1:00-3:00) (3)  
 205A SPEC THEA PROJ (TBA) (1)  
 205B SPEC THEA PROJ (TBA) (1)  
 205C SPEC THEA PROJ (TBA) (1)  
 221B BALLET III (MTWTh 11:30-1:00) (3)  
 230B ACTING (Mw 11:00-1:00) (3)  
 230B ACTING (TTh 11:00-1:00) (3)  
 231B DIRECTING (MWF 3:30-5:30) (3)  
 235B ADV ACTING (Mw 1:00-3:00) (3)  
 245A STAGE LIGHTING (Mw 10:00-11:30) (3)  
 246A SCENERY DESIGN (TTh 10:00-11:30) (3)  
 250A COSTUME DESIGN (TThF 1:00-3:00) (4)  
 305A SPEC THEA PROJ (TBA) (1)  
 305B SPEC THEA PROJ (TBA) (1)  
 305C SPEC THEA PROJ (TBA) (1)  
 355A HIST OF THEA (TThF 1:00) (3)

## DRED (Driver Education)

- \*200 INTR DR TRAF SAF ED (TTh 12:00) (3)  
 220 HIGHWAY TRAN SYSTEM (T 6:30-9:30) (3)  
 \*307 PRAC DR TRF SAF ED (TTh 1:00) (3)  
 309 ADV DRIVER TRAINING (M 6:30-9:30) (5)  
 320 LAB PROG DR TRAF SAF (MWF 1:00; TTh 1:00-3:00) (5)

\*THE THIRD HOUR WILL BE LABORATORY INSTRUCTION.

## ECON (Economics)

- 111 INTRO TO ECON I (MWF 12:00) (3)  
 111 INTRO TO ECON I (MWF 12:00) (3)  
 111 INTRO TO ECON I (MWF 12:00) (3)  
 111 INTRO TO ECON I (MWF 12:00) (3)  
 111 INTRO TO ECON I (MWF 12:00) (3)  
 112 INTRO TO ECON II (MWF 2:00) (3)  
 112 INTRO TO ECON II (MWF 2:00) (3)  
 112 INTRO TO ECON II (MWF 2:00) (3)  
 112 INTRO TO ECON II (MWF 2:00) (3)  
 112 INTRO TO ECON II (MWF 2:00) (3)  
 112 INTRO TO ECON II (MWF 2:00) (3)  
 220 LABOR PROBLEMS (M-F 9:00) (5)  
 221 PUBLIC FINANCE (MWF 11:00) (3)  
 226 INTER ECON FINANCE (M-F 8:00) (5)  
 228 STAT ANALYSIS I (MWF 9:00) (3)  
 228 STAT ANALYSIS I (TTh 8:00-9:30) (3)  
 228 STAT ANALYSIS I (MWF 1:00) (3)

## Economi

- 228 STA  
 229 STA  
 229 STA  
 229 STA  
 229 STA  
 243 INT  
 243 INT  
 243 INT  
 243 INT  
 244 INT  
 244 INT  
 244 INT  
 262 MAN  
 262 MAN  
 263 MAN  
 263 MAN  
 272 FI  
 272 FI  
 272 FI  
 272 FI  
 273 FI  
 273 FI  
 324 SO  
 324 SO  
 324 SO  
 324 SO  
 326 DI  
 330 R  
 336 R  
 386 L  
 389 T  
 403 S  
 418 M  
 438 S

## EDUC

## ADM

- 334G  
 400B  
 409  
 422  
 428  
 460  
 468  
 470  
 483B  
 \*498A  
 \*498B  
 \*598A  
 \*598B

## \*Admissi

## CO

- 358G  
 360G  
 401A  
 401B  
 402  
 404  
 449  
 450  
 450  
 451  
 452

## 92

## 92

## 101

## 101

## 101

## 107

## 107

## 203

## 219

## 219

## 220

## 220

## 301

## 304

## 304

## 304

## 305

## 306G

## 311

## 311

## 313G

## 316G

## 332



**Economics (Cont.)**

- 228 STAT ANALYSIS I (TTh 2:00-3:30) (3)
- 229 STAT ANALYSIS II (MWF 10:00) (3)
- 229 STAT ANALYSIS II (MWF 11:00) (3)
- 229 STAT ANALYSIS II (TTh 9:30-11:00) (3)
- 229 STAT ANALYSIS II (MWF 2:00) (3)
- 229 STAT ANALYSIS II (TTh 2:00-3:30) (3)
- 243 INTER MICRO THEORY (MWF 10:00) (3)
- 243 INTER MICRO THEORY (TTh 9:30-11:00) (3)
- 243 INTER MICRO THEORY (TTh 11:00-12:30) (3)
- 243 INTER MICRO THEORY (MWF 3:00) (3)
- 244 INTER MACRO THEORY (MWF 9:00) (3)
- 244 INTER MACRO THEORY (MWF 1:00) (3)
- 244 INTER MACRO THEORY (TTh 2:00-3:30) (3)
- 262 MANAGEMENT SCIE I (MWF 2:00) (3)
- 262 MANAGEMENT SCIE I (TTh 12:30-2:00) (3)
- 263 MANAGEMENT SCIE II (MWF 11:00) (3)
- 263 MANAGEMENT SCIE II (TTh 9:30-11:00) (3)
- 272 FINANC MANAGEM I (MWF 8:00) (3)
- 272 FINANC MANAGEM I (TTh 9:30-11:00) (3)
- 272 FINANC MANAGEM I (MWF 11:00) (3)
- 272 FINANC MANAGEM I (TTh 2:00-3:30) (3)
- 273 FINANC MANAGEM II (MWF 8:00) (3)
- 273 FINANC MANAGEM II (TTh 11:00-12:30) (3)
- 324 SOC & POL ENV BUSI (MWF 8:00) (3)
- 324 SOC & POL ENV BUSI (TTh 11:00-12:30) (3)
- 324 SOC & POL ENV BUSI (TTh 12:30-2:00) (3)
- 324 SOC & POL ENV BUSI (TTh 2:00-3:30) (3)
- 326 DEV OF ECON THOUGHT (M-F 10:00) (5)
- 330 INVESTMENTS (M-F 1:00) (5)
- 336 REG ECON ANALYSIS (MWF 1:00) (3)
- 386 LIFE INSURANCE (M-F 12:00) (5)
- 389 TRANSPORTATION (M-F 8:00) (5)
- 403 STATISTICAL METHODS (W 6:30-9:30) (3)
- 418 MANAGERIAL ECON (Th 6:30-9:30) (3)
- 438 STATISTICAL ANALYSIS (W 6:30-9:30) (3)

**EDUC (Education)**

**ADMINISTRATION AND SUPERVISION**

- 334G HOME SCH COM RELAT (T 6:30-9:30) (3)
- 400B SEMINAR SUPV (F 6:30-9:30) (3)
- 409 HIGH SCH ADMIN (Th 6:30-9:30) (3)
- 422 HIST PHIL OF EDUC (M 6:30-9:30) (3)
- 428 PRIN PRAC SUPV (W 6:30-9:30) (3)
- 460 ADV PUBLIC RELAT (T 6:30-9:30) (3)
- 468 OPER MAIN SCH PLN (M 6:30-9:30) (3)
- 470 SCH BUS MANAGE (Th 6:30-9:30) (3)
- 483B ADV SCH LAW (S 9:00-12:00) (3)
- \*498A ADMIN INTERNSHIP (TBA) (3)
- \*498B ADMIN INTERNSHIP (TBA) (3)
- \*598A ADMIN INTERN 6 YR (TBA) (3)
- \*598B ADMIN INTERN 6 YR (TBA) (3)

\*ADMISSION BY PERMISSION OF INSTRUCTOR ONLY.

**COUNSELOR EDUCATION**

- 358G TESTS & MEASUREMENTS (W 6:30-9:30) (3)
- 360G PRIN OF GUIDANCE (W 6:30-9:30) (3)
- 401A ANAL INDIV NON TES (T 6:30-9:30) (3)
- 401B ANAL INDIV TES (M 2:00-5:00) (3)
- 402 OCCUP EDUC INFORM (F 6:30-9:30) (3)
- 404 COUNSEL TECHNIQUES (S 9:00-12:00) (3)
- 449 COUNSEL INTERNSHIP (TBA) (3)
- 450 GROUP METH GUID (TTh 2:00-3:30) (3)
- 450 GROUP METH GUID (Th 6:30-9:30) (3)
- 451 SPEC FLD STUDY GUI (TBA) (3)
- 452 DIR RDNGS GUIDANCE (TBA) (3)

**ELEMENTARY EDUCATION**

- 92 REMEDIAL READING (TTh 2:00) (0)
- 92 REMEDIAL READING (TTh 3:00) (0)
- 101 INTRODUCT EDUC (MWF 11:00) (3)
- 101 INTRODUCT EDUC (MWF 11:00) (3)
- 101 INTRODUCT EDUC (MWF 1:00) (3)
- 101 INTRODUCT EDUC (MWF 12:00-1:30) (3)
- 107 INTRODUCT KIND EDUC (TTh 8:00-9:30) (3)
- 107 INTRODUCT KIND EDUC (TTh 8:00-9:30) (3)
- 203 LANG ARTS PG (MWF 11:00-1:00) (6)
- 219 KDGTN CURR (TTh 10:00-11:30) (3)
- 219 KDGTN CURR (TTh 10:00-11:30) (3)
- 220 METH MAT KDGTN ED (TTh 1:00-2:30) (3)
- 220 METH MAT KDGTN ED (TTh 1:00-2:30) (3)
- 301 EDUC KINDERGARTEN (TBA) (3)
- 304 TCH LRN & TEST PRI (MWF 8:00-10:00) (6)
- 304 TCH LRN & TEST PRI (MWF 10:00-12:00) (6)
- 304 TCHLRN & TEST PRI (MWF 8:00-10:00) (6)
- 304 TCH LRN & TEST UG (MWF 8:00-10:00) (6)
- 305 SOC STUD ELEM SCHL (T 6:30-9:30) (3)
- 306G LANG ARTS UP EL GR (MWF 10:00-12:00) (6)
- 311 LANG ARTS UP EL GR (MWF 10:00-12:00) (6)
- 311 DEV CURRI KNDTN ED (M 6:30-9:30) (3)
- 313G APPLIED PHONICS READ (Th 6:30-9:30) (3)
- 316GA PROB IN EDUC (TBA) (1)
- 332



- 333 PROB IN EDUC (TBA) (1)
- 334 PROB IN EDUC (TBA) (1)
- 335 PROB IN EDUC (TBA) (1)
- 341K OBS & ST TCH KN (TBA) (12)
- 341 OBS & SUP TCH LEG (TBA) (12)
- 342 OBS & SUP TCH LEG (TBA) (12)
- 343 OBS & SUP TCH LEG (TBA) (12)
- 344 OBS & SUP TCH LEG (TBA) (12)
- 345 OBS & SUP TCH UEG (TBA) (12)
- 346 OBS & SUPTCH UEG (TBA) (12)
- 347 OBS & SUP TCH UEG (TBA) (12)
- 348 OBS & SUP TCH UEG (TBA) (12)
- 405 INVEST TCH OF READ (W 6:30-9:30) (3)
- 421B REMED OF RDG DISAB (M 6:30-9:30) (3)
- 421B REMED OF RDG DISAB (W 4:00-7:00) (3)
- 425 ELEM SCHL CURRICUL (Th 6:30-9:30) (3)



**SECONDARY EDUCATION**

- 272 INTR AUD VIS INSTR (Mw 8:00-10:00) (3)
- 272 INTR AUD VIS INSTR (Mw 10:00-12:00) (3)
- 272 INTR AUD VIS INSTR (TTh 8:00-10:00) (3)
- 272 INTR AUD VIS INSTR (TTh 10:00-12:00) (3)
- 272 INTR AUD VIS INSTR (TTh 1:00-3:00) (3)
- 318s CLRM ORG CTL HI SC (M 7:00-10:00) (2)
- 318s CLRM ORG CTL HI SC (T 7:00-10:00) (2)
- 318s CLRM ORG CTL HI SC (W 7:00-10:00) (2)
- 321G EDUC COMM METH MAT (M 6:30-9:30) (3)
- 321G EDUC COMM METH MAT (T 6:30-9:30) (3)
- 324 OBS SUP TCH HI SCH (TBA) (12)
- 325 PRIN PRAC SEC EDUC (M-F 9:00) (5)
- 325 PRIN PRAC SEC EDUC (TTh 10:00-12:30) (5)
- 325 PRIN PRAC SEC EDUC (TTh 1:00-3:30) (5)
- 325 PRIN PRAC SEC EDUC (TTh 10:00-12:30) (5)
- 325 PRIN PRAC SEC EDUC (TTh 1:00-3:30) (5)
- 374G DES MULT INST MAT (W 6:30-9:30) (3)
- 424 HIGH SCHL CURRIC (W 6:30-9:30) (3)
- 430 STATISTICS IN EDUC (T 6:30-9:30) (3)
- 434 FLD PROB EDUC COM(TBA) (3)
- 454 FOUNDA AMER EDUC (T 6:30-9:30) (3)
- 480 INTRO TO RESRCH (T 6:30-9:30) (3)
- 480 INTRO TO RESRCH (Th 6:30-9:30) (3)
- 492 INTRO EDUC TV (Th 6:30-9:30) (3)

**SPECIAL EDUCATION**

- 161 INTROD EXCEP CHILD (TTh 10:00-11:30) (3)
- 161 INTROD EXCEP CHILD (TTh 2:00-3:30) (3)
- 170 INTROD MENTAL RET (MWF 11:00) (3)
- 170 INTROD MENTAL RET (MWF 12:00) (3)
- 324G OBS STUD TCH SPEC ED (TBA) (12)
- 366G INTROD EXCEP CHILD (W 6:30-9:30) (3)
- 371c PROB OF EXCEP CHILD (TTh 9:00-10:30) (3)
- 390GA MINOR PROB SPEC ED (TBA) (3)
- 390GB MINOR PROB SPEC ED (TBA) (3)
- 390GC MINOR PROB SPEC ED (TBA) (3)
- 426A METH MAT TEACH LD CHILD (TTh 4:00-5:30) (3)
- 426B METH MAT TEACH LD CHILD (TTh 5:30-7:00) (3)
- 455 PROB RESRCH INRET (M 6:30-9:30) (3)
- 486A METH MAT TEACH RETARD (TTh 9:00-10:30) (3)
- 486B METH MAT TEACH RETARD (TTh 11:00-12:30) (3)
- 496A INTERNSHIP RETARDA (TBA) (3)
- 496B INTERNSHIP RETARDA (TBA) (3)

**ENGLISH & JOURNALISM**

**ENGL (English)**

- 1 COMPOSITION (MWF 8:00) (3)
- 1 COMPOSITION (MWF 10:00) (3)
- 1 COMPOSITION (MWF 1:00) (3)
- 1 COMPOSITION (MWF 2:00) (3)
- 1 COMPOSITION (MTTh 3:00) (3)
- 2 COMPOSITION (MWF 8:00) (3)
- 2 COMPOSITION (MWF 11:00) (3)
- 2 COMPOSITION (MWF 1:00) (3)
- 2 COMPOSITION (MWF 2:00) (3)
- 2 COMPOSITION (MTTh 8:00) (3)
- 2 COMPOSITION (MTTh 3:00) (3)
- 2 COMPOSITION (TWF 8:00) (3)
- 2 COMPOSITION (TWF 10:00) (3)
- 2 COMPOSITION (TWF 11:00) (3)
- 2 COMPOSITION (TWF 12:00) (3)
- 2 COMPOSITION (TWF 2:00) (3)
- 2 COMPOSITION (MwTh 3:00) (3)
- 2 COMPOSITION (TThF 8:00) (3)
- 2 COMPOSITION (TThF 9:00) (3)
- 2 COMPOSITION (TThF 12:00) (3)
- 2 COMPOSITION (MWF 8:00) (3)
- 2 COMPOSITION (MWF 10:00) (3)
- 2 COMPOSITION (MWF 11:00) (3)
- 2 COMPOSITION (MWF 12:00) (3)
- 2 COMPOSITION (MWF 1:00) (3)
- 2 COMPOSITION (MWF 2:00) (3)
- 2 COMPOSITION (MTTh 1:00) (3)
- 2 COMPOSITION (TWF 9:00) (3)
- 2 COMPOSITION (TWF 10:00) (3)
- 2 COMPOSITION (TWF 1:00) (3)



**GERM (German)**

- 1 ELEM GERM (M-F 9:00) (5)
- 2 ELEM GERM (M-F 10:00) (5)
- 2 ELEM GERM (M-F 12:00) (5)
- 3 INTERM GERM (M-F 10:00) (5)
- 4 INTERM GERM (M-F 12:00) (5)
- 205 ADV GRAM & COMP (M-F 10:00) (5)
- 218 SURVEY OF GERM LIT (M-F 9:00) (5)
- 323 LAB THEORY & TECH (T 11:00) (1)
- 323M METH TCHNG FORN LA (MWF 11:00) (3)
- 368 GERMAN LYRIC (MWF 11:00) (3)

**ITAL (Italian)**

- 50 INTRO ITAL LYRIC LIT (M-F 1:00) (4)

**LATN (Latin)**

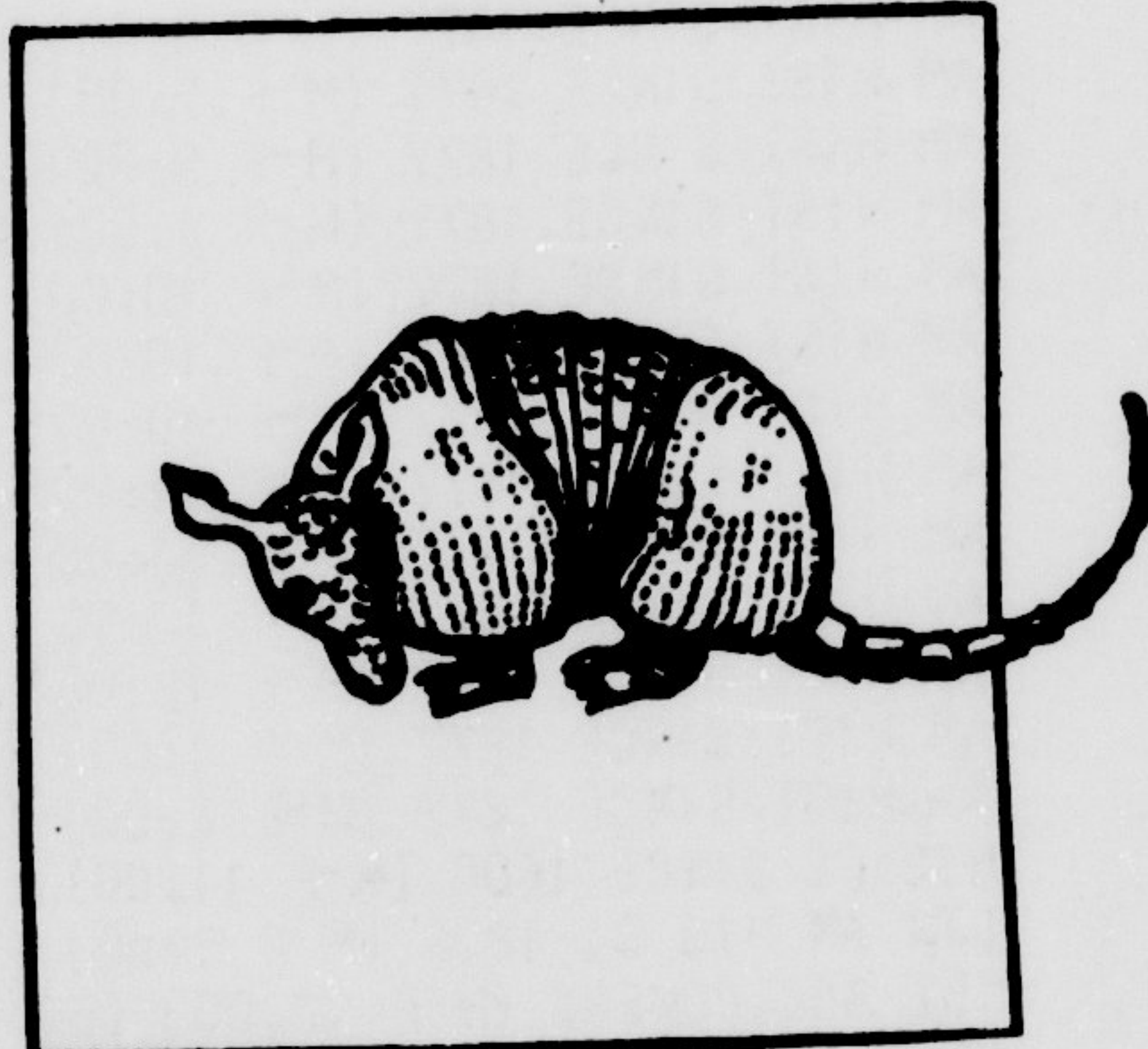
- 1 ELEM LATN (M-F 1:00) (5)
- 2 ELEM LATN (M-F 11:00) (5)
- 3 INTER LATN (M-F 9:00) (5)
- 4 INTER LATN (M-F 12:00) (5)
- 220 LATN LIT IN TRANS (TWF 10:00) (3)

**RUSS (Russian)**

- 2 ELEM RUSS (M-F 9:00) (5)
- 220 PROSE XIX C TRANS (MWF 11:00) (3)

**SPAN (Spanish)**

- 1 ELEM SPAN (M-F 9:00) (5)
- 1 ELEM SPAN (M-F 9:00) (5)
- 1 ELEM SPAN (M-F 10:00) (5)
- 1 ELEM SPAN (M-F 11:00) (5)
- 1 ELEM SPAN (M-F 12:00) (5)
- 2 ELEM SPAN (M-F 9:00) (5)
- 2 ELEM SPAN (M-F 10:00) (5)
- 2 ELEM SPAN (M-F 10:00) (5)
- 2 ELEM SPAN (M-F 12:00) (5)
- 2 ELEM SPAN (M-F 1:00) (5)
- 3 INTERM SPAN (M-F 10:00) (5)
- 3 INTERM SPAN (M-F 11:00) (5)
- 4 INTERM SPAN (M-F 9:00) (5)
- 4 INTERM SPAN (M-F 11:00) (5)
- 4 INTERM SPAN (M-F 11:00) (5)
- 115 SPAN CIVILIZATION (MWF 12:00) (3)
- 215 PRAC PHON (MWF 11:00) (3)
- 220 SPANLIT IN TRANS (MWF 12:00) (3)
- 230A SURV OF SPAN LIT I (MWF 9:00) (3)
- 290 SPANISH FOETRY (MTTH 1:00) (3)
- 305c ADVANCED SYNTAX (M 6:30-9:30) (3)
- 323c LAB THEORY & TECH (T 11:00) (1)
- 323M METH TCHNG FORN LANG (MWF 11:00) (3)



- 15 EARTH & MAN (M-F 9:00) (5)
- 15 EARTH & MAN (M-F 10:00) (5)
- 15 EARTH & MAN (M-F 11:00) (5)
- 15 EARTH & MAN (M-F 12:00) (5)
- 15 EARTH & MAN (M-F 1:00) (5)
- 15 EARTH & MAN (M-F 2:00) (5)
- 106 PHYSICAL GEOG I (MTTH 11:00) (4)
- 106L LAB (T 12:00-3:00) (0)
- 106L LAB (T 3:00-6:00) (0)
- 108 CULTURAL GEOG (MWF 10:00) (3)
- 108 CULTURAL GEOG (MWF 12:00) (3)
- 115 ECONOMIC GEOG (M-F 9:00) (5)
- 115 ECONOMIC GEOG (M-F 1:00) (5)
- 142 WORLD GEOG (M-F 11:00) (5)
- 154 MAP READING & INTER (MWF 9:00-11:00) (4)
- 154 MAP READING & INTER (MTTH 1:00-3:00) (4)
- 208 GEOG OF POPULATION (MWF 10:00) (3)
- 216 NORTH CAROLINA (TTH 11:00) (2)
- 220 CARIBBEAN AMERICA (TTH 12:00) (2)
- 222 MEXICO (TTH 9:00) (2)
- 232 US AND CANADA (M-F 10:00) (5)
- 237 WESTERN EUROPE (M-F 9:00) (5)
- 242 POLITICAL GEOG (MWF 9:00) (3)
- 259 CARTOGRAPHY (TTH 10:00-12:00) (3)
- 269 CLIMATOLOGY (MW 9:00) (4)
- 269L LAB (TTH 9:00-11:00) (0)
- 272 FAR EAST (M-F 12:00) (5)
- 319G GEOG OF MANUFACTURING (MWF 11:00) (3)
- 323M TEACHOF GEOG IN HS (MW 1:00-3:00) (3)
- 345c RECREATIONAL LAND USE (T 6:30-9:30) (3)
- 353c SEM INPHYSICAL (TTH 1:00-3:00) (3)
- 354c SEM IN CULTURAL (M 6:30-9:30) (3)
- 367c INTER OF AERIAL PHOTO (MW 1:00-3:00) (3)
- 391c PROBLEMS (TBA) (1)
- 392c PROBLEMS (TBA) (2)
- 393c PROBLEMS (TBA) (3)

**Geography (Cont.)**

- 395 HONORS (TBA) (3)
- 398 SENIOR SEMINAR (MW 2:00-3:30) (3)
- 400a SEMINAR (TBA) (3)
- 400b SEMINAR (TBA) (3)
- 400c SEMINAR (TBA) (3)
- 430 READINGS (TBA) (3)
- 475 RES URBAN (TBA) (3)
- 480 RES ECONOMIC (TBA) (3)
- 484 RES CARTOGRAPHY (TBA) (3)
- 485 RES PHYSICAL (TBA) (3)
- 486 RES GEOG EDUCA (TBA) (3)
- 499a THESIS (TBA) (3)
- 499b THESIS (TBA) (3)
- 499c THESIS (TBA) (3)
- 499r RESIDENCE (TBA) (0)

**PLAN (Planning)**

- 243 REGIONAL PLANNING (MWF 9:00) (3)
- 289 PLAN TECHNIQUES II (M-F 8:00) (5)
- 322 PLANNING LEGISLATION (MWF 10:00) (3)
- 322 PLANNING LEGISLATION (MWF 11:00) (3)

**GEOGRAPHY & PLANNING**

**GEOG (Geography)**

- 15 EARTH & MAN (M-F 8:00) (5)

**RESEARCH**

Thousands of Topics  
\$2.75 per page  
Send for your up-to-date, 160-page, mail order catalog. Enclose \$1.00 to cover postage (delivery time is 1 to 2 days).  
RESEARCH ASSISTANCE, INC.  
11941 WILSHIRE BLVD., SUITE #2  
LOS ANGELES, CALIF. 90025  
(213) 477-8474 or 477-5493  
Our research material is sold for research assistance only.

**Riggen Shoe Repair Shop**  
REPAIR ALL LEATHER GOODS  
111 W. 4th St., Downtown  
Greenville 758-0204

Greenville's only leather store  
**The Trading Post**  
is now taking custom orders upon request

THE FINEST MEDICAL CARE  
AT THE LOWEST PRICES  
FOR A SAFE LEGAL ONE DAY  
**ABORTION**  
EVERYTHING CAN BE PROVIDED FOR YOUR CARE, COMFORT AND CONVENIENCE BY PHONE BY OUR UNDERSTANDING COUNSELORS. TIME IS IMPORTANT - CALL TOLL FREE TODAY.  
A.I.C. Services 800-5235583

**REMEMBER THIS NUMBER 752-7483**  
You may not need it today, tomorrow, or next week, but someday you will need it, everyone eventually does.  
**DELIVERY SERVICE 5-11 7 DAYS**  
NEW!! Chef Salad \$1.25  
Pizza, lasagna, spaghetti sandwiches  
**PIZZA CHEF**  
Corner 5th & Cotanche St.

**READY NOW! Eastbrook Apartments**  
"A New Direction For Finer Living"  
**IMMEDIATE OCCUPANCY**  
Two bedroom luxury apartments with optional den and all the new amenities including wall to wall carpeting, granite, dishwasher, individual air conditioning and heating control, AND MORE.  
**RECREATION? YES!**  
Pool Clubhouse Tennis  
**MODEL OPEN DAILY 10-12, 1-4:30**  
Sat. & Sun. 1:30-4:30  
Pet Leases Available  
**LIVE ON THE Fashionable Eastside**  
201 Eastbrook Drive—Off Greenville Boulevard (US 264 Bypass) just south of Tank Street, convenient to SCU and everything.  
**Eastbrook**  
Rent includes UTILITIES  
ONE CHECK PAYS ALL  
**DRUCKER & FALK**  
758-4012  
An Accredited Management Organization

GEOL (Geology)

- 100 GENERAL GEOLOGY (MWF 8:00) (3)
- 100 GENERAL GEOLOGY (MWF 10:00) (3)
- 100 GENERAL GEOLOGY (MWF 10:00) (3)
- 110L GEN GEOL LAB (M 12:00-3:00) (1)
- 110L GEN GEOL LAB (T 3:00-6:00) (1)
- 110L GEN GEOL LAB (W 3:00-6:00) (1)
- 110L GEN GEOL LAB (M 12:00-3:00) (1)
- 110L GEN GEOL LAB (T 3:00-6:00) (1)
- 110L GEN GEOL LAB (W 3:00-6:00) (1)
- 101 GENERAL GEOLOGY (MWF 8:00) (3)
- 101 GENERAL GEOLOGY (MWF 8:00) (3)
- 101 GENERAL GEOLOGY (MWF 9:00) (3)
- 101 GENERAL GEOLOGY (MWF 9:00) (3)
- 101 GENERAL GEOLOGY (MWF 10:00) (3)
- 101 GENERAL GEOLOGY (MWF 10:00) (3)
- 111L GEN GEOL LAB (M 12:00-3:00) (1)
- 111L GEN GEOL LAB (M 12:00-3:00) (1)
- 111L GEN GEOL LAB (M 3:00-6:00) (1)
- 111L GEN GEOL LAB (M 3:00-6:00) (1)
- 111L GEN GEOL LAB (T 12:00-3:00) (1)
- 111L GEN GEOL LAB (T 12:00-3:00) (1)
- 111L GEN GEOL LAB (T 3:00-6:00) (1)
- 111L GEN GEOL LAB (T 3:00-6:00) (1)
- 111L GEN GEOL LAB (W 12:00-3:00) (1)
- 111L GEN GEOL LAB (W 12:00-3:00) (1)
- 111L GEN GEOL LAB (Th 12:00-3:00) (1)
- 111L GEN GEOL LAB (Th 12:00-3:00) (1)
- 201 MINEROLOGY II (MWF 9:00) (4)
- 201L LAB (M 12:00-3:00) (0)
- 278 PETROLOGY I (TW 12:00-3:00) (2)
- 301G PALEONTOLOGY (TTh 9:00) (3)
- 301GL LAB (Th 3:00-6:00) (0)
- 330G ECONOMIC GEOLOGY (MWF 10:00) (4)
- 330GL LAB (F 12:00-3:00) (0)
- 340G DIRECTED STUDIES (TBA) (3)
- 341G DIRECTED STUDIES (TBA) (3)
- 342G DIRECTED STUDIES (TBA) (3)
- 414 PETROGRAPHY OF CARBONATES (TBA) (4)
- 414L LAB (TBA) (0)
- 421 TECTONIC PRINCIPLES II (TBA) (3)

HLTH (Health)

- 12 HLTH MOD SOC (MWF 8:00) (3)
- 12 HLTH MOD SOC (MWF 8:00) (3)
- 12 HLTH MOD SOC (TTh 8:00-9:30) (3)
- 12 HLTH MOD SOC (MWF 9:00) (3)
- 12 HLTH MOD SOC (TTh 9:30-11:00) (3)
- 12 HLTH MOD SOC (MWF 10:00) (3)
- 12 HLTH MOD SOC (MWF 10:00) (3)
- 12 HLTH MOD SOC (MWF 10:00) (3)
- 12 HLTH MOD SOC (MWF 10:00) (3)
- 12 HLTH MOD SOC (MWF 10:00) (3)
- 12 HLTH MOD SOC (MWF 10:00) (3)
- 12 HLTH MOD SOC (MWF 10:00) (3)
- 12 HLTH MOD SOC (MWF 10:00) (3)
- 12 HLTH MOD SOC (MWF 10:00) (3)
- 12 HLTH MOD SOC (MWF 12:00) (3)
- 12 HLTH MOD SOC (MWF 12:00) (3)
- 12 HLTH MOD SOC (MWF 12:00) (3)
- 12 HLTH MOD SOC (MWF 1:00) (3)
- 12 HLTH MOD SOC (MWF 1:00) (3)
- 12 HLTH MOD SOC (TTh 1:30-3:00) (3)
- 12 HLTH MOD SOC (MWF 2:00) (3)
- 12 HLTH MOD SOC (MWF 2:00) (3)
- 12 HLTH MOD SOC (MWF 3:00) (3)
- 123 PRIN HLTH & PHYE (M-F 10:00) (5)
- 123 PRIN HLTH & PHYE (M-F 2:00) (5)
- 125 SAFETY ED & FA (MWF 8:00) (3)
- 125 SAFETY ED & FA (MWF 9:00) (3)
- 125 SAFETY ED & FA (TTh 10:00-11:30) (3)
- 125 SAFETY ED & FA (TTh 11:30-1:00) (3)
- 125 SAFETY ED & FA (MWF 12:00) (3)
- 125 SAFETY ED & FA (MWF 1:00) (3)
- 244 PROC HLTH ELM SCH (MWF 8:00) (3)
- 244 PROC HLTH ELM SCH (MWF 9:00) (3)
- 244 PROC HLTH ELM SCH (TTh 9:30-11:00) (3)
- 244 PROC HLTH ELM SCH (MWF 2:00) (3)
- 261 ADM SCH COM HLTH (MWF 12:00) (3)
- 331 PRV & CARE ATH INJ (MWF 9:00) (3)
- 348 HLTH EDUC PROB (TTh 8:00-9:30) (3)
- 352 METH TCH HLTH (TTh 11:00-12:30) (3)
- 355G DRUG EDUCATION (Th 6:30-9:30) (3)

HPRO (Health Professions)

- 250A SYMP IN HLTH CARE (M 6:30-9:30) (1)
- 250B SYMP IN HLTH CARE (M 6:30-9:30) (1)
- 300 COMM HLTH & ORG (Mw 10:30-12:00) (3)
- 300 COMM HLTH & ORG (Mw 1:00-2:30) (3)
- 305 ADMIN SUP & CONS (Mw 2:00-3:30) (3)
- 305 ADMIN SUP & CONS (TTh 2:00-3:30) (3)
- 321 GROSS ANATOMY (MWF 9:00) (5)
- 321L LAB (MWF 10:00-12:00) (0)
- 322 HUMAN PHYSIOL (MWF 8:00) (5)
- 322L LAB (W 2:00-5:00) (0)
- 322L LAB (T 2:00-5:00) (0)

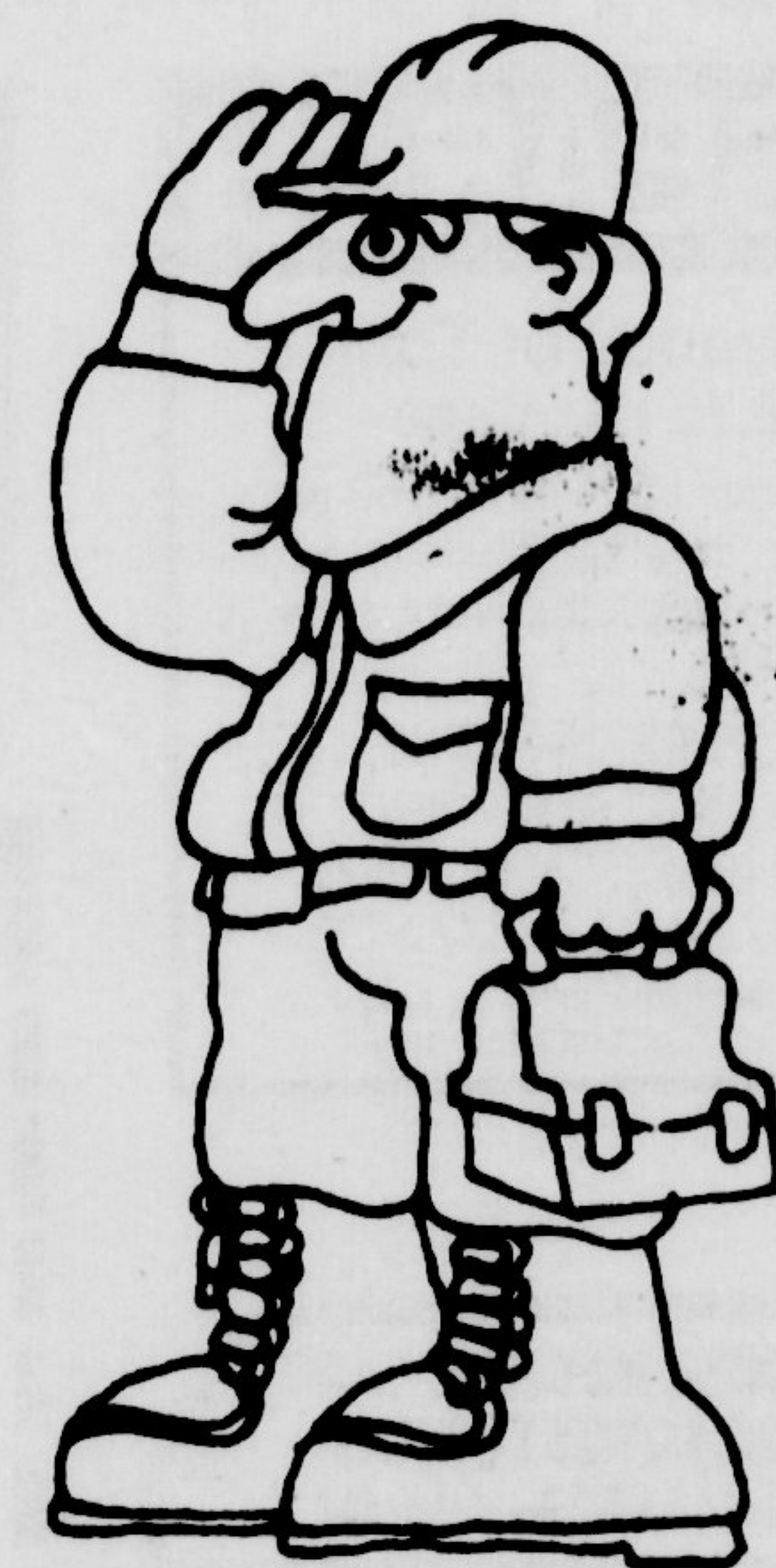
- 334 RESEARCH DESIGN (M 1:00) (3)
- 334L LAB (M 2:00-4:00; W 1:00-4:00) (0)
- 334 RESEARCH DESIGN (T 8:30-9:30) (3)
- 334L LAB (T 9:30-11:00; Th 8:30-11:00) (0)

HIST (History)

- 40 WORLD HIST TO 1500 (M-F 8:00) (5)
- 40 WORLD HIST TO 1500 (M-F 9:00) (5)
- 40 WORLD HIST TO 1500 (M-F 10:00) (5)
- 40 WORLD HIST TO 1500 (M-F 10:00) (5)
- 40 WORLD HIST TO 1500 (M-F 11:00) (5)
- 40 WORLD HIST TO 1500 (M-F 11:00) (5)
- 40 WORLD HIST TO 1500 (M-F 1:00) (5)
- 41H HIST EUR SIN 1500 (M-F 9:00) (5)
- 41 HIST EUR SIN 1500 (M-F 9:00) (5)
- 41 HIST EUR SIN 1500 (M-F 10:00) (5)
- 41 HIST EUR SIN 1500 (M-F 11:00) (5)
- 41 HIST EUR SIN 1500 (M-F 11:00) (5)
- 41 HIST EUR SIN 1500 (M-F 12:00) (5)
- 50 AMER HIST TO 1877 (M-F 9:00) (5)
- 50 AMER HIST TO 1877 (M-F 10:00) (5)
- 50 AMER HIST TO 1877 (M-F 10:00) (5)
- 50 AMER HIST TO 1877 (M-F 11:00) (5)
- 50 AMER HIST TO 1877 (M-F 11:00) (5)
- 50 AMER HIST TO 1877 (M-F 12:00) (5)
- 50 AMER HIST TO 1877 (M-F 12:00) (5)
- 50 AMER HIST TO 1877 (M-F 1:00) (5)
- 50 AMER HIST TO 1877 (M-F 2:00) (5)
- 51 AM HIST SINCE 1877 (M-F 8:00) (5)
- 51 AM HIST SINCE 1877 (M-F 9:00) (5)
- 51 AM HIST SINCE 1877 (M-F 9:00) (5)
- 51H AM HIST SINCE 1877 (M-F 9:00) (5)
- 51 AM HIST SINCE 1877 (M-F 10:00) (5)
- 51 AM HIST SINCE 1877 (M-F 10:00) (5)
- 51 AM HIST SINCE 1877 (M-F 10:00) (5)
- 51 AM HIST SINCE 1877 (M-F 11:00) (5)
- 51 AM HIST SINCE 1877 (M-F 11:00) (5)
- 51 AM HIST SINCE 1877 (M-F 12:00) (5)
- 51 AM HIST SINCE 1877 (M-F 12:00) (5)
- 51 AM HIST SINCE 1877 (M-F 1:00) (5)
- 51 AM HIST SINCE 1877 (M-F 2:00) (5)
- 226 HIS FE SINCE 1600 (M-F 11:00) (5)
- 247 LTN AM HIS SI 1808 (M-F 9:00) (5)
- 248 THE ABC POWERS (M-F 12:00) (5)
- 255 NO CAROLINA HIST (MT 8:00-10:00; W 8:00) (5)
- 255 NO CAROLINA HIST (M-F 10:00) (5)
- 255 NO CAROLINA HIST (M-F 12:00) (5)
- 257 HIST BLACK AMER (M-F 12:00) (5)
- 264 REPRES AMER I (M-F 8:00) (5)
- 267 PROB AMER HISTORY (M-F 2:00) (5)
- 273 EARLY MID AGES (MWF 11:00) (3)
- 290 COLON AM TO 1763 (MWF 11:00) (3)
- 292 CONT EXPAN US (MWF 10:00) (3)
- 296 US BETWEEN 2 WARS (MWF 9:00) (3)
- 323M MAT METH SOC STUD (MTW 2:00-4:00) (4)
- 329 HIST OF RUSSIA (M-F 9:00) (5)
- 330 HIST MOD GERMANY (M-F 10:00) (5)
- 337G HIS BALKANS 20 CEN (MWF 11:00) (3)
- 344G TUDOR STUART ENGL (MWF 12:00) (3)
- 353G SOL CUL US SI 1865 (MWF 1:00) (3)
- 358 CONS HI US TO 1888 (M-F 10:00) (5)
- 364G THE AMERICAN WEST (MWF 9:00) (3)
- 370 DIP HIST OF US (M-F 11:00) (5)
- 378 HIST OF MOD JAPAN (M-F 12:00) (5)
- 381 EC HIS US SI 1865 (M-F 9:00) (5)
- 386G RELA LA TO WOD HI (MWF 10:00) (3)
- 394 HONORS (TBA) (3)
- 461 PRSM AM REV ER REP (MWF 11:00) (3)
- 465 PRG MOV NORM AM HI (MWF 10:00) (3)
- 473 EA MD EU 1598-1815 (MWF 9:00) (3)
- 485 SEMINAR AMER HIST (M 6:30-9:30) (3)
- 486 SEMINAR EUR HIST (MWF 1:00) (3)
- 499A THESIS (TBA) (3)
- 499B THESIS (TBA) (3)
- 499R RESIDENCE (TBA) (0)

HOME (Home Economics)

- 5 FOOD (Mw 9:00) (5)
- 5L LAB (TTh 8:00-11:00) (0)
- 5L LAB (TTh 2:00-5:00) (0)
- 34 CLTHG SEL & CONS I (Mw 8:00) (5)
- 34L LAB (TTh 8:00-11:00) (0)
- 102 OBSER DEV OF CHIL (M 9:00) (2)
- 102L LAB (Wf 9:00) (0)
- 102L LAB (Wf 11:00) (0)
- 103 FAMILY RELATIONS (MWF 8:00) (3)
- 103 FAMILY RELATIONS (MWF 3:00) (3)
- 104 HLTH OF THE FAM (MWF 1:00) (3)
- 105 NUTRITION (MWF 11:00) (3)
- 125 MEAL PLAN TAB SERV (Mw 2:00) (3)
- 125L LAB (Mw 3:00) (0)
- 126 CONSUMER EDUC (MWF 11:00) (3)
- 134 TEXTILES (Mw 3:00) (3)
- 134L LAB (T 2:00-5:00) (0)
- 134L LAB (Th 2:00-5:00) (0)
- 135 COSTUME DESIGN (Mw 11:00) (3)



135L  
135L  
180  
180L  
185  
185L  
185L  
200  
200  
202  
202  
202L  
202L  
202L  
205  
205L  
210  
210L  
217  
217L  
235  
282  
282L  
286  
286L  
290  
300  
300L  
306  
308  
308L  
311GL  
313G  
317  
318  
321G  
323M  
324G  
324GL  
328  
328L  
330  
337G  
337GL  
340G  
345  
350  
351  
360  
360  
387G  
390  
390  
390L  
392  
392L  
392L  
400C  
401  
405  
410  
450A  
450B  
499A  
499B  
499C  
499R  
INDT  
18  
18  
18  
19  
19  
19  
101  
113  
115  
116  
122  
122  
124  
130  
157  
158  
158  
159  
165  
165  
165  
202  
211  
214  
214L  
214  
214L  
219A  
219B  
219B  
227  
229

- 135L LAB (T 11:00-2:00) (0)
- 135L LAB (TH 11:00-2:00) (0)
- 180 INTERIOR DECORAT (MW 2:00) (3)
- 180L LAB (T 2:00-5:00) (0)
- 185 HOUSING (MF 9:00) (3)
- 185L LAB (W 8:00-11:00) (0)
- 185L LAB (TH 8:00-11:00) (0)
- 200 INFANCY BEHAV DEV (MWF 1:00) (3)
- 200 INFANCY BEHAV DEV (MWF 10:00) (3)
- 202 PRE CHLD BEH & DEV (TTH 10:00) (3)
- 202 PRE CHLD BEH & DEV (MF 2:00) (3)
- 202L LAB (WF 10:00) (0)
- 202L LAB (TTH 2:00) (0)
- 202L LAB (TTH 11:00) (0)
- 205 ADVANCED FOOD (MW 12:00) (5)
- 205L LAB (TTH 11:00-2:00) (0)
- 210 PRESCH EDUCATION (TTH 2:00) (3)
- 210L LAB (TBA) (0)
- 217 PRESCHOOL CHILD (MF 2:00) (3)
- 217L LAB (TBA) (0)
- 235 HISTORY OF COSTUME (MWF 2:00) (3)
- 282 CONSTR HSE FURNISH (F 12:00) (3)
- 282L LAB (MW 11:00-1:00) (0)
- 286 HOUSEHOLD EQUIPMENT (M 8:00) (2)
- 286L LAB (W 8:00-10:00) (0)
- 290 HOME MANAGEMENT (MWF 10:00) (3)
- 300 GEN TECH HOMEK (M 8:00) (3)
- 300L LAB (WF 8:00-10:00) (0)
- 306 M-F ROLE MOD SOC (MWF 9:00) (3)
- 306 MAT EXPR PRESCHL (T 10:00-12:00) (3)
- 308L LAB (TH 11:00) (0)
- 311L PRAC CHLD PRESCHL (TBA) (3)
- 313c HUM DEV & FAM REL (TH 6:30-9:30) (3)
- 317 CURRI DEVELOPMENT (TTH 3:00-4:30) (3)
- 318 CLASS ORGAN IN HE (TBA) (2)
- 321c ADULT EDUCATION (W 6:30-9:30) (3)
- 323M METH YCHG HM ECON (TTH 11:30-1:00) (3)
- 324c DRAPING (F 9:00) (3)
- 324cL DRAPING LAB (TTH 9:00-11:00) (0)
- 328 QUANTITY FOOD (M 12:00) (3)
- 328L LAB (WTH 11:00-1:00) (0)
- 330 INSTITU MANAG ORGN (MF 10:00-11:30) (3)
- 337c CLOTH SEL & CONS III (MWF 1:00) (3)
- 337cL LAB (MWF 2:00) (0)
- 340c INSTITUTION EQUIP (T 6:30-9:30) (3)
- 345 ED SERV PRACTICUM (TBA) (6)
- 350 READINGS HOME ECON (TBA) (2)
- 351 SEMINAR (TTH 8:00-9:30) (3)
- 360 INDEPENDENT STUDY (TBA) (3)
- 387c LIGHT & WIR DESIGN (M 6:30-9:30) (3)
- 390 HM MANAG EXPERI (TTH 1:00) (3)
- 390 HM MANAG EXPERI (TTH 1:00) (3)
- 390 HM MANAG EXPERI (T 8:00-10:00) (3)
- 390L LAB (TBA) (0)
- 392 MANAG TIMEHU RESO (MF 1:00) (3)
- 392L LAB (W 1:00-3:00) (0)
- 392L LAB (TH 8:00-10:00) (0)
- 400c SEMINAR (TH 6:30-9:30) (3)
- 401 THEOR CHLD DEV (W 6:30-9:30) (3)
- 405 INTRN CHLD DEV CNTR (TBA) (6)
- 410 OCCUP PROG HM ECON (T 6:30-9:30) (3)
- 450a DIR PROB HM ECON (TBA) (3)
- 450b DIR PROB HM ECON (TBA) (3)
- 499a THESIS SEMINAR (TBA) (3)
- 499b THESIS SEMINAR (TBA) (3)
- 499c THESIS SEMINAR (TBA) (3)
- 499d RESIDENCE (TBA) (0)

**INDT (Ind. & Technical Education)**

- 10 ENG GRAPHICS (TTH 8:00-11:00) (3)
- 16 ENG GRAPHICS (MWF 12:00-2:00) (3)
- 16 ENG GRAPHICS (MWF 10:00-12:00) (3)
- 19 ENG GRAPHICS (MWF 8:00-10:00) (3)
- 19 ENG GRAPHICS (TTH 8:00-11:00) (3)
- 19 ENG GRAPHICS (MWF 2:00-4:00) (3)
- 101 IND CRAFTS (MWF 8:00-10:00) (3)
- 113 ADV TECH DRAFTING (TTH 8:00-11:00) (3)
- 115 GRAPHIC ARTS TECH (TTH 8:00-11:00) (3)
- 116 GRAPHIC ARTS TECH (MWF 10:00-12:00) (3)
- 122 WOOD TECHNOLOGY (MWF 8:00-10:00) (3)
- 122 WOOD TECHNOLOGY (MWF 10:00-12:00) (3)
- 124 POWER MECHANICS (TTH 1:00-4:00) (3)
- 130 GEN MECH DRAWING (TTH 6:30-9:30) (3)
- 157 METALS TECH (MWF 8:00-10:00) (3)
- 158 METALS TECH (MWF 10:00-12:00) (3)
- 158 METALS TECH (MWF 2:00-4:00) (3)
- 159 METALS TECH (TTH 8:00-11:00) (3)
- 165 SHEET METAL (MWF 10:00-12:00) (3)
- 165 SHEET METAL (MWF 2:00-4:00) (3)
- 165 SHEET METAL (TTH 8:00-11:00) (3)
- 202 GEN IND ED LAB (MWF 8:00) (3)
- 211 ARCH DRAFT (TTH 1:00-4:00) (3)
- 214 TECH WRITING (MWF 8:00) (3)
- 214L LAB (TBA) (0)
- 214 TECH WRITING (MWF 9:00) (5)
- 214L LAB (TBA) (0)
- 219a SUPERVISED WORK EXP (TBA) (3)
- 219b SUPERVISED WORK EXP (TBA) (3)
- 227 IND ED LAB PROB (MWF 1:00) (3)
- 229 WOOD SCIENCE (TTH 8:00-11:00) (3)



- 235 THEORY & PRACT YPO DES (MWF 2:00-4:00) (3)
- 255 WOODTURNING (TBA) (3)
- 260 ADV METALS TECH (MWF 8:00-10:00) (3)
- 270 BASIC ELECTRICITY (MWF 8:00-10:00) (3)
- 270 BASIC ELECTRICITY (MWF 2:00-4:00) (3)
- 271 INDUSTRIAL ELEC (M-F 12:00) (3)
- 271L LAB (T 1:00) (3)
- 272 BASIC ELEC (TTH 8:00-11:00) (3)
- 274 DEVELOP OF INDUSTRY (MWF 1:00) (3)
- 275 INDUS PROD (MWF 12:00-2:00) (3)
- 290 MCT VEH FOR DR ED (W 1:00-4:00) (3)
- 302 INDUS SUPERVISION (MWF 3:00) (3)
- 303 INDUS MAINT PRACT (TTH 1:00-4:00) (3)
- 304 PRIN OF INDUS TRAIN (MWF 2:00) (3)
- 314c IND STU TECH DRAFT (TBA) (3)
- 316c IND STU WOOD TECH (TBA) (3)
- 323c METHODS IN IND ED (M 6:30-9:30) (3)
- 325 WELDING TECH (MWF 10:00-12:00) (3)
- 325 WELDING TECH (MWF 2:00-4:00) (3)
- 325 WELDING TECH (MWF 8:00-10:00) (3)
- 337c IND STU GRAPH ARTS TECH (TBA) (3)
- 358c IND STU METALS TECH (TBA) (3)
- 371 ADV IND ELEC/ELEC (MW 4:00-5:30) (3)
- 371L LAB (TBA) (3)
- 372c IND STU IND ELEC (TBA) (3)
- 424 ADMIN & SUPER OF IND ED (T 6:30-9:30) (3)
- 450 SPEC PROB IN IND ED (TBA) (3)
- 490 SPEC INV IN IND ED (TBA) (3)

**JOUR (Journalism)**

- 115 INTRO JOURN (MWF 2:00) (3)
- 116 JOURN WRIT (MWF 12:00) (3)
- 214a ADV REPORT (MWF 10:00) (3)
- 217 FEAT ART WRIT (MWF 9:00) (3)
- 218 JOURN PROB (T 6:30-9:30) (3)
- 317 ED WRIT (MWF 11:00) (3)
- 319a SPEC PROB SEM (MWF 1:00) (3)

**LIBS (Library Science)**

- 1 RESEARCH SKILLS (T 9:00) (1)
- 1 RESEARCH SKILLS (W 9:00) (1)
- 1 RESEARCH SKILLS (W 2:00) (1)
- 1 RESEARCH SKILLS (TH 9:00) (1)
- 1 RESEARCH SKILLS (TH 12:00) (1)
- 1 RESEARCH SKILLS (F 9:00) (1)
- 1 RESEARCH SKILLS (F 11:00) (1)
- 1 RESEARCH SKILLS (M 9:00) (1)
- 1 RESEARCH SKILLS (M 11:00) (1)
- 1 RESEARCH SKILLS (M 2:00) (1)
- 208 STORYTELLING (TTH 11:00-12:30) (3)
- 216 THE MEDIA PROGRAM (M-F 10:00) (5)
- 302c ORG MEDIA COLLECTS (TTH 9:00-11:00) (5)
- 304 REFER & BIBLIOGRAPH (MWF 1:00) (3)
- 305 INDEX & SUB BIBLIOG (TTH 9:00-9:30) (3)
- 311c FIELD WORK (TBA) (3)
- 322 OBSER SCH LIB PRAC (TBA) (5)
- 323c METH MATER MED PRO (M 3:00-6:00) (3)
- 408 BIBLIO OF HUMANITI (TH 6:00-9:00) (3)
- 413 AUTOMA LIB PROCESS (W 6:00-9:00) (3)
- 488 RESEARCH TECHNIQUE (T 6:00-9:00) (3)
- 490b INDEPENDENT STUDY (TBA) (3)

**MATH (Mathematics)**

- 1L MATH LEARNING LAB (TBA) (0)
- 65 COLLEGE ALGEBRA (M-F 8:00) (5)
- 65 COLLEGE ALGEBRA (M-F 9:00) (5)
- 65 COLLEGE ALGEBRA (M-F 10:00) (5)
- 65 COLLEGE ALGEBRA (M-F 11:00) (5)
- 65 COLLEGE ALGEBRA (M-F 12:00) (5)
- 65 COLLEGE ALGEBRA (M-F 1:00) (5)
- 65 COLLEGE ALGEBRA (M-F 2:00) (5)
- 65 COLLEGE ALGEBRA (M-F 3:00) (5)
- 65 COLLEGE ALGEBRA (M-F 4:00) (5)
- 65 COLLEGE ALGEBRA (M-F 5:00) (5)
- 65 COLLEGE ALGEBRA (M-F 6:00) (5)
- 65 COLLEGE ALGEBRA (M-F 7:00) (5)
- 65 COLLEGE ALGEBRA (M-F 8:00) (5)
- 65 COLLEGE ALGEBRA (M-F 9:00) (5)
- 65 COLLEGE ALGEBRA (M-F 10:00) (5)
- 65 COLLEGE ALGEBRA (M-F 11:00) (5)
- 65 COLLEGE ALGEBRA (M-F 12:00) (5)
- 65 COLLEGE ALGEBRA (M-F 1:00) (5)
- 65 COLLEGE ALGEBRA (M-F 2:00) (5)
- 65 COLLEGE ALGEBRA (M-F 3:00) (5)
- 65 COLLEGE ALGEBRA (M-F 4:00) (5)
- 65 COLLEGE ALGEBRA (M-F 5:00) (5)
- 65 COLLEGE ALGEBRA (M-F 6:00) (5)
- 65 COLLEGE ALGEBRA (M-F 7:00) (5)
- 65 COLLEGE ALGEBRA (M-F 8:00) (5)
- 65 COLLEGE ALGEBRA (M-F 9:00) (5)
- 65 COLLEGE ALGEBRA (M-F 10:00) (5)
- 65 COLLEGE ALGEBRA (M-F 11:00) (5)
- 65 COLLEGE ALGEBRA (M-F 12:00) (5)
- 65 COLLEGE ALGEBRA (M-F 1:00) (5)
- 65 COLLEGE ALGEBRA (M-F 2:00) (5)
- 65 COLLEGE ALGEBRA (M-F 3:00) (5)
- 65 COLLEGE ALGEBRA (M-F 4:00) (5)
- 65 COLLEGE ALGEBRA (M-F 5:00) (5)
- 65 COLLEGE ALGEBRA (M-F 6:00) (5)
- 65 COLLEGE ALGEBRA (M-F 7:00) (5)
- 65 COLLEGE ALGEBRA (M-F 8:00) (5)
- 65 COLLEGE ALGEBRA (M-F 9:00) (5)
- 65 COLLEGE ALGEBRA (M-F 10:00) (5)
- 65 COLLEGE ALGEBRA (M-F 11:00) (5)
- 65 COLLEGE ALGEBRA (M-F 12:00) (5)
- 65 COLLEGE ALGEBRA (M-F 1:00) (5)
- 65 COLLEGE ALGEBRA (M-F 2:00) (5)
- 65 COLLEGE ALGEBRA (M-F 3:00) (5)
- 65 COLLEGE ALGEBRA (M-F 4:00) (5)
- 65 COLLEGE ALGEBRA (M-F 5:00) (5)
- 65 COLLEGE ALGEBRA (M-F 6:00) (5)
- 65 COLLEGE ALGEBRA (M-F 7:00) (5)
- 65 COLLEGE ALGEBRA (M-F 8:00) (5)
- 65 COLLEGE ALGEBRA (M-F 9:00) (5)
- 65 COLLEGE ALGEBRA (M-F 10:00) (5)
- 65 COLLEGE ALGEBRA (M-F 11:00) (5)
- 65 COLLEGE ALGEBRA (M-F 12:00) (5)
- 65 COLLEGE ALGEBRA (M-F 1:00) (5)
- 65 COLLEGE ALGEBRA (M-F 2:00) (5)
- 65 COLLEGE ALGEBRA (M-F 3:00) (5)
- 65 COLLEGE ALGEBRA (M-F 4:00) (5)
- 65 COLLEGE ALGEBRA (M-F 5:00) (5)
- 65 COLLEGE ALGEBRA (M-F 6:00) (5)
- 65 COLLEGE ALGEBRA (M-F 7:00) (5)
- 65 COLLEGE ALGEBRA (M-F 8:00) (5)
- 65 COLLEGE ALGEBRA (M-F 9:00) (5)
- 65 COLLEGE ALGEBRA (M-F 10:00) (5)
- 65 COLLEGE ALGEBRA (M-F 11:00) (5)
- 65 COLLEGE ALGEBRA (M-F 12:00) (5)
- 65 COLLEGE ALGEBRA (M-F 1:00) (5)
- 65 COLLEGE ALGEBRA (M-F 2:00) (5)
- 65 COLLEGE ALGEBRA (M-F 3:00) (5)
- 65 COLLEGE ALGEBRA (M-F 4:00) (5)
- 65 COLLEGE ALGEBRA (M-F 5:00) (5)
- 65 COLLEGE ALGEBRA (M-F 6:00) (5)
- 65 COLLEGE ALGEBRA (M-F 7:00) (5)
- 65 COLLEGE ALGEBRA (M-F 8:00) (5)
- 65 COLLEGE ALGEBRA (M-F 9:00) (5)
- 65 COLLEGE ALGEBRA (M-F 10:00) (5)
- 65 COLLEGE ALGEBRA (M-F 11:00) (5)
- 65 COLLEGE ALGEBRA (M-F 12:00) (5)
- 65 COLLEGE ALGEBRA (M-F 1:00) (5)
- 65 COLLEGE ALGEBRA (M-F 2:00) (5)
- 65 COLLEGE ALGEBRA (M-F 3:00) (5)
- 65 COLLEGE ALGEBRA (M-F 4:00) (5)
- 65 COLLEGE ALGEBRA (M-F 5:00) (5)
- 65 COLLEGE ALGEBRA (M-F 6:00) (5)
- 65 COLLEGE ALGEBRA (M-F 7:00) (5)
- 65 COLLEGE ALGEBRA (M-F 8:00) (5)
- 65 COLLEGE ALGEBRA (M-F 9:00) (5)
- 65 COLLEGE ALGEBRA (M-F 10:00) (5)
- 65 COLLEGE ALGEBRA (M-F 11:00) (5)
- 65 COLLEGE ALGEBRA (M-F 12:00) (5)
- 65 COLLEGE ALGEBRA (M-F 1:00) (5)
- 65 COLLEGE ALGEBRA (M-F 2:00) (5)
- 65 COLLEGE ALGEBRA (M-F 3:00) (5)
- 65 COLLEGE ALGEBRA (M-F 4:00) (5)
- 65 COLLEGE ALGEBRA (M-F 5:00) (5)
- 65 COLLEGE ALGEBRA (M-F 6:00) (5)
- 65 COLLEGE ALGEBRA (M-F 7:00) (5)
- 65 COLLEGE ALGEBRA (M-F 8:00) (5)
- 65 COLLEGE ALGEBRA (M-F 9:00) (5)
- 65 COLLEGE ALGEBRA (M-F 10:00) (5)
- 65 COLLEGE ALGEBRA (M-F 11:00) (5)
- 65 COLLEGE ALGEBRA (M-F 12:00) (5)
- 65 COLLEGE ALGEBRA (M-F 1:00) (5)
- 65 COLLEGE ALGEBRA (M-F 2:00) (5)
- 65 COLLEGE ALGEBRA (M-F 3:00) (5)
- 65 COLLEGE ALGEBRA (M-F 4:00) (5)
- 65 COLLEGE ALGEBRA (M-F 5:00) (5)
- 65 COLLEGE ALGEBRA (M-F 6:00) (5)
- 65 COLLEGE ALGEBRA (M-F 7:00) (5)
- 65 COLLEGE ALGEBRA (M-F 8:00) (5)
- 65 COLLEGE ALGEBRA (M-F 9:00) (5)
- 65 COLLEGE ALGEBRA (M-F 10:00) (5)
- 65 COLLEGE ALGEBRA (M-F 11:00) (5)
- 65 COLLEGE ALGEBRA (M-F 12:00) (5)
- 65 COLLEGE ALGEBRA (M-F 1:00) (5)
- 65 COLLEGE ALGEBRA (M-F 2:00) (5)
- 65 COLLEGE ALGEBRA (M-F 3:00) (5)
- 65 COLLEGE ALGEBRA (M-F 4:00) (5)
- 65 COLLEGE ALGEBRA (M-F 5:00) (5)
- 65 COLLEGE ALGEBRA (M-F 6:00) (5)
- 65 COLLEGE ALGEBRA (M-F 7:00) (5)
- 65 COLLEGE ALGEBRA (M-F 8:00) (5)
- 65 COLLEGE ALGEBRA (M-F 9:00) (5)
- 65 COLLEGE ALGEBRA (M-F 10:00) (5)
- 65 COLLEGE ALGEBRA (M-F 11:00) (5)
- 65 COLLEGE ALGEBRA (M-F 12:00) (5)
- 65 COLLEGE ALGEBRA (M-F 1:00) (5)
- 65 COLLEGE ALGEBRA (M-F 2:00) (5)
- 65 COLLEGE ALGEBRA (M-F 3:00) (5)
- 65 COLLEGE ALGEBRA (M-F 4:00) (5)
- 65 COLLEGE ALGEBRA (M-F 5:00) (5)
- 65 COLLEGE ALGEBRA (M-F 6:00) (5)
- 65 COLLEGE ALGEBRA (M-F 7:00) (5)
- 65 COLLEGE ALGEBRA (M-F 8:00) (5)
- 65 COLLEGE ALGEBRA (M-F 9:00) (5)
- 65 COLLEGE ALGEBRA (M-F 10:00) (5)
- 65 COLLEGE ALGEBRA (M-F 11:00) (5)
- 65 COLLEGE ALGEBRA (M-F 12:00) (5)
- 65 COLLEGE ALGEBRA (M-F 1:00) (5)
- 65 COLLEGE ALGEBRA (M-F 2:00) (5)
- 65 COLLEGE ALGEBRA (M-F 3:00) (5)
- 65 COLLEGE ALGEBRA (M-F 4:00) (5)
- 65 COLLEGE ALGEBRA (M-F 5:00) (5)
- 65 COLLEGE ALGEBRA (M-F 6:00) (5)
- 65 COLLEGE ALGEBRA (M-F 7:00) (5)
- 65 COLLEGE ALGEBRA (M-F 8:00) (5)
- 65 COLLEGE ALGEBRA (M-F 9:00) (5)
- 65 COLLEGE ALGEBRA (M-F 10:00) (5)
- 65 COLLEGE ALGEBRA (M-F 11:00) (5)
- 65 COLLEGE ALGEBRA (M-F 12:00) (5)
- 65 COLLEGE ALGEBRA (M-F 1:00) (5)
- 65 COLLEGE ALGEBRA (M-F 2:00) (5)
- 65 COLLEGE ALGEBRA (M-F 3:00) (5)
- 65 COLLEGE ALGEBRA (M-F 4:00) (5)
- 65 COLLEGE ALGEBRA (M-F 5:00) (5)
- 65 COLLEGE ALGEBRA (M-F 6:00) (5)
- 65 COLLEGE ALGEBRA (M-F 7:00) (5)
- 65 COLLEGE ALGEBRA (M-F 8:00) (5)
- 65 COLLEGE ALGEBRA (M-F 9:00) (5)
- 65 COLLEGE ALGEBRA (M-F 10:00) (5)
- 65 COLLEGE ALGEBRA (M-F 11:00) (5)
- 65 COLLEGE ALGEBRA (M-F 12:00) (5)
- 65 COLLEGE ALGEBRA (M-F 1:00) (5)
- 65 COLLEGE ALGEBRA (M-F 2:00) (5)
- 65 COLLEGE ALGEBRA (M-F 3:00) (5)
- 65 COLLEGE ALGEBRA (M-F 4:00) (5)
- 65 COLLEGE ALGEBRA (M-F 5:00) (5)
- 65 COLLEGE ALGEBRA (M-F 6:00) (5)
- 65 COLLEGE ALGEBRA (M-F 7:00) (5)
- 65 COLLEGE ALGEBRA (M-F 8:00) (5)
- 65 COLLEGE ALGEBRA (M-F 9:00) (5)
- 65 COLLEGE ALGEBRA (M-F 10:00) (5)
- 65 COLLEGE ALGEBRA (M-F 11:00) (5)
- 65 COLLEGE ALGEBRA (M-F 12:00) (5)
- 65 COLLEGE ALGEBRA (M-F 1:00) (5)
- 65 COLLEGE ALGEBRA (M-F 2:00) (5)
- 65 COLLEGE ALGEBRA (M-F 3:00) (5)
- 65 COLLEGE ALGEBRA (M-F 4:00) (5)
- 65 COLLEGE ALGEBRA (M-F 5:00) (5)
- 65 COLLEGE ALGEBRA (M-F 6:00) (5)
- 65 COLLEGE ALGEBRA (M-F 7:00) (5)
- 65 COLLEGE ALGEBRA (M-F 8:00) (5)
- 65 COLLEGE ALGEBRA (M-F 9:00) (5)
- 65 COLLEGE ALGEBRA (M-F 10:00) (5)
- 65 COLLEGE ALGEBRA (M-F 11:00) (5)
- 65 COLLEGE ALGEBRA (M-F 12:00) (5)
- 65 COLLEGE ALGEBRA (M-F 1:00) (5)
- 65 COLLEGE ALGEBRA (M-F 2:00) (5)
- 65 COLLEGE ALGEBRA (M-F 3:00) (5)
- 65 COLLEGE ALGEBRA (M-F 4:00) (5)
- 65 COLLEGE ALGEBRA (M-F 5:00) (5)
- 65 COLLEGE ALGEBRA (M-F 6:00) (5)
- 65 COLLEGE ALGEBRA (M-F 7:00) (5)
- 65 COLLEGE ALGEBRA (M-F 8:00) (5)
- 65 COLLEGE ALGEBRA (M-F 9:00) (5)
- 65 COLLEGE ALGEBRA (M-F 10:00) (5)
- 65 COLLEGE ALGEBRA (M-F 11:00) (5)
- 65 COLLEGE ALGEBRA (M-F 12:00) (5)
- 65 COLLEGE ALGEBRA (M-F 1:00) (5)
- 65 COLLEGE ALGEBRA (M-F 2:00) (5)
- 65 COLLEGE ALGEBRA (M-F 3:00) (5)
- 65 COLLEGE ALGEBRA (M-F 4:00) (5)
- 65 COLLEGE ALGEBRA (M-F 5:00) (5)
- 65 COLLEGE ALGEBRA (M-F 6:00) (5)
- 65 COLLEGE ALGEBRA (M-F 7:00) (5)
- 65 COLLEGE ALGEBRA (M-F 8:00) (5)
- 65 COLLEGE ALGEBRA (M-F 9:00) (5)
- 65 COLLEGE ALGEBRA (M-F 10:00) (5)
- 65 COLLEGE ALGEBRA (M-F 11:00) (5)
- 65 COLLEGE ALGEBRA (M-F 12:00) (5)
- 65 COLLEGE ALGEBRA (M-F 1:00) (5)
- 65 COLLEGE ALGEBRA (M-F 2:00) (5)
- 65 COLLEGE ALGEBRA (M-F 3:00) (5)
- 65 COLLEGE ALGEBRA (M-F 4:00) (5)
- 65 COLLEGE ALGEBRA (M-F 5:00) (5)
- 65 COLLEGE ALGEBRA (M-F 6:00) (5)
- 65 COLLEGE ALGEBRA (M-F 7:00) (5)
- 65 COLLEGE ALGEBRA (M-F 8:00) (5)
- 65 COLLEGE ALGEBRA (M-F 9:00) (5)
- 65 COLLEGE ALGEBRA (M-F 10:00) (5)
- 65 COLLEGE ALGEBRA (M-F 11:00) (5)
- 65 COLLEGE ALGEBRA (M-F 12:00) (5)
- 65 COLLEGE ALGEBRA (M-F 1:00) (5)
- 65 COLLEGE ALGEBRA (M-F 2:00) (5)
- 65 COLLEGE ALGEBRA (M-F 3:00) (5)
- 65 COLLEGE ALGEBRA (M-F 4:00) (5)
- 65 COLLEGE ALGEBRA (M-F 5:00) (5)
- 65 COLLEGE ALGEBRA (M-F 6:00) (5)
- 65 COLLEGE ALGEBRA (M-F 7:00) (5)
- 65 COLLEGE ALGEBRA (M-F 8:00) (5)
- 65 COLLEGE ALGEBRA (M-F 9:00) (5)
- 65 COLLEGE ALGEBRA (M-F 10:00) (5)
- 65 COLLEGE ALGEBRA (M-F 11:00) (5)
- 65 COLLEGE ALGEBRA (M-F 12:00) (5)
- 65 COLLEGE ALGEBRA (M-F 1:00) (5)
- 65 COLLEGE ALGEBRA (M-F 2:00) (5)
- 65 COLLEGE ALGEBRA (M-F 3:00) (5)
- 65 COLLEGE ALGEBRA (M-F 4:00) (5)
- 65 COLLEGE ALGEBRA (M-F 5:00) (5)
- 65 COLLEGE ALGEBRA (M-F 6:00) (5)
- 65 COLLEGE ALGEBRA (M-F 7:00) (5)
- 65 COLLEGE ALGEBRA (M-F 8:00) (5)
- 65 COLLEGE ALGEBRA (M-F 9:00) (5)
- 65 COLLEGE ALGEBRA (M-F 10:00) (5)
- 65 COLLEGE ALGEBRA (M-F 11:00) (5)
- 65 COLLEGE ALGEBRA (M-F 12:00) (5)
- 65 COLLEGE ALGEBRA (M-F 1:00) (5)
- 65 COLLEGE ALGEBRA (M-F 2:00) (5)
- 65 COLLEGE ALGEBRA (M-F 3:00) (5)
- 65 COLLEGE ALGEBRA (M-F 4:00) (5)
- 65 COLLEGE ALGEBRA (M-F 5:00) (5)
- 65 COLLEGE ALGEBRA (M-F 6:00) (5)
- 65 COLLEGE ALGEBRA (M-F 7:00) (5)
- 65 COLLEGE ALGEBRA (M-F 8:00) (5)
- 65 COLLEGE ALGEBRA (M-F 9:00) (5)
- 65 COLLEGE ALGEBRA (M-F 10:00) (5)
- 65 COLLEGE ALGEBRA (M-F 11:00) (5)
- 65 COLLEGE ALGEBRA (M-F 12:00) (5)
- 65 COLLEGE ALGEBRA (M-F 1:00) (5)
- 65 COLLEGE ALGEBRA (M-F 2:00) (5)
- 65 COLLEGE ALGEBRA (M-F 3:00) (5)
- 65 COLLEGE ALGEBRA (M-F 4:00) (5)
- 65 COLLEGE ALGEBRA (M-F 5:00) (5)
- 65 COLLEGE ALGEBRA (M-F 6:00) (5)
- 65 COLLEGE ALGEBRA (M-F 7:00) (5)
- 65 COLLEGE ALGEBRA (M-F 8:00) (5)
- 65 COLLEGE ALGEBRA (M-F 9:00) (5)
- 65 COLLEGE ALGEBRA (M-F 10:00) (5)
- 65 COLLEGE ALGEBRA (M-F 11:00) (5)
- 65 COLLEGE ALGEBRA (M-F 12:00) (5)
- 65 COLLEGE ALGEBRA (M-F 1:00) (5)
- 65 COLLEGE ALGEBRA (M-F 2:00) (5)
- 65 COLLEGE ALGEBRA (M-F 3:00) (5)
- 65 COLLEGE ALGEBRA (M-F 4:00) (5)
- 65 COLLEGE ALGEBRA (M-F 5:00) (5)
- 65 COLLEGE ALGEBRA (M-F 6:00) (5)
- 65 COLLEGE ALGEBRA (M-F 7:00) (5)
- 65 COLLEGE ALGEBRA (M-F 8:00) (5)
- 65 COLLEGE ALGEBRA (M-F 9:00) (5)
- 65 COLLEGE ALGEBRA (M-F 10:00) (5)
- 65 COLLEGE ALGEBRA (M-F 11:00) (5)
- 65 COLLEGE ALGEBRA (M-F 12:00) (5)
- 65 COLLEGE ALGEBRA (M-F 1:00) (5)
- 65 COLLEGE ALGEBRA (M-F 2:00) (5)
- 65 COLLEGE ALGEBRA (M-F 3:00) (5)
- 65 COLLEGE ALGEBRA (M-F 4:00) (5)
- 65 COLLEGE ALGEBRA (M-F 5:00) (5)
- 65 COLLEGE ALGEBRA (M-F 6:00) (5)
- 65 COLLEGE ALGEBRA (M-F 7:00) (5)
- 65 COLLEGE ALGEBRA (M-F 8:00) (5)
- 65 COLLEGE ALGEBRA (M-F 9:00) (5)
- 65 COLLEGE ALGEBRA (M-F 10:00) (5)
- 65 COLLEGE ALGEBRA (M-F 11:00) (5)
- 65 COLLEGE ALGEBRA (M-F 12:00) (5)
- 65 COLLEGE ALGEBRA (M-F 1:00

- 86 CALCULUS BUS APP II (MWF 9:00) (3)
- 86 CALCULUS BUS APP II (TTH 10:00-12:00) (3)
- 86 CALCULUS BUS APP II (MWF 2:00) (3)
- 120 PLANE ANALYTIC GEO (M-F 1:00) (5)
- 127 BASIC CONC MATH I (MWF 8:00) (3)
- 127 BASIC CONC MATH I (TTH 8:00-10:00) (3)
- 127 BASIC CONC MATH I (TTH 10:00-12:00) (3)
- 127 BASIC CONC MATH I (TTH 12:00-2:00) (3)
- 127 BASIC CONC MATH I (MWF 1:00) (3)
- 128 BASIC CONC MATH II (MTWTH 8:00) (3)
- 128 BASIC CONC MATH II (MWF 10:00) (3)
- 128 BASIC CONC MATH II (TTH 10:00-12:00) (3)
- 128 BASIC CONC MATH II (MWF 1:00) (3)
- 128 BASIC CONC MATH II (TTH 1:00-3:00) (3)
- 129 BASIC CONC MATH III (MTWTH 9:00) (3)
- 129 BASIC CONC MATH III (MWF 11:00) (3)
- 129 BASIC CONC MATH III (TTH 1:00-3:00) (3)
- 166 ADV CONC MATH II (M-F 12:00) (5)
- 182 INTEGR CALCULUS I (M-F 10:00) (5)
- 183 INTEGR CALCULUS II (M-F 10:00) (5)
- 183 INTEGR CALCULUS II (M-F 12:00) (5)
- 184 INTEG CALCULUS III (M-F 9:00) (5)
- 184 INTEG CALCULUS III (M-F 12:00) (5)
- 185 CALCULUS I (M-F 12:00) (5)
- 186 CALCULUS II (M-F 12:00) (5)
- 187 CALCULUS III (M-F 1:00) (5)
- 200 INTRO DIGIT COMPUT (M-F 11:00) (4)
- 201 COMPUT ORG & PROGR (MWF 11:00) (3)
- \*219E TCH ELEM MATH (MW 8:00) (3)
- \*219EL LAB (T 8:00-10:00) (0)
- \*219E TCH ELEM MATH (MW 11:00) (3)
- \*219EL LAB (T 10:00-12:00) (0)
- \*219E TCH ELEM MATH (MW 1:00) (3)
- \*219EL LAB (F 12:00-2:00) (0)

\*STUDENTS MUST REGISTER FOR THE LAB SECTION CORRESPONDING TO THEIR 219 CLASS SECTION.

**Mathematics (Cont.)**

- \*219I TCH ELEM MATH (MW 9:00) (3)
- \*219IL LAB (T 8:00-10:00) (0)
- \*219I TCH ELEM MATH (MW 10:00) (3)
- \*219IL LAB (F 10:00-12:00) (0)
- \*219I TCH ELEM MATH (MTH 12:00) (3)
- \*219IL LAB (T 11:00-1:00) (0)
- 228 ELEM STATIS METH I (M-F 8:00) (5)
- 228 ELEM STATIS METH I (M-F 10:00) (5)
- 228 ELEM STATIS METH I (M-F 2:00) (5)
- 229 ELEM STATI METH II (M-F 12:00) (5)
- 256 LINEAR ALGEBRA (MWF 1:00) (3)
- 263 INTRO MOD ALGE I (MWF 2:00) (3)
- 264 INTRO MOD ALGE II (MWF 1:00) (3)
- 268 ANALYSIS I (TTH 2:00-4:00) (3)
- 273 INTRO NUM ANALYSIS (M-F 8:00) (5)
- 299A MATH HONORS (TBA) (1)
- 304 SYSTEMS SIMULATION (MWF 11:00) (3)
- 307 MATH STATIS I (M-F 12:00) (5)
- 322 FOUND OF MATH (MWF 10:00) (3)
- 323M TEACHING OF MATH (MWF 9:00) (3)
- 329 INTRO MATH LINGUIS (TWF 9:00) (3)
- 332 CAL FINITE DIFFER (M-F 10:00) (5)
- 345G NON-EUCLID GEOM I (MWF 11:00) (3)
- 365G THEORY OF NUMBERS I (MWF 2:00) (3)
- 366G THEORY OF NUMBERS 2 (MTH 8:00-10:00) (3)
- 369G HIST DEV OF MATH (TWF 8:00) (3)
- 381G MOD MATH ELEM TCH I (S 9:00-12:00) (3)
- 386G ADV CALCULUS II (S 9:00-12:00) (3)
- 399A MATHEMATICS HONORS (TBA) (1)
- 402 INTRO INFO PROCESS (W 6:30-9:30) (3)
- 436 INIRO HI GEOM II (T 6:30-9:30) (3)
- 471 MODERN ALGEBRA 2 (Th 6:30-9:30) (3)
- 488 INIRO RESRCH MATH (TBA) (3)
- 499A THESIS SEMINAR I (TBA) (3)
- 499B THESIS SEMINAR II (TBA) (3)
- 499R RESIDENCE (TBA) (0)

**MRSC (Medical Record Science)**

- 220 MED REC SCIENCE (M-F 9:00) (5)
- 220L LAB (MW 10:00) (0)
- 225 DIRECTED PRACTICE (T 1:00-5:00) (1)
- 225 DIRECTED PRACTICE (W 1:00-5:00) (1)
- 225 DIRECTED PRACTICE (Th 1:00-5:00) (1)
- 320 CLINICAL INTERNSHIP (M-F 8:00-5:00) (15)

**MEDT (Medical Technology)**

- 302A CLIN CHEM (MWF 9:00) (6)
- 302AL LAB (TTH 8:00-11:00) (0)
- 304B CLIN EDUCATION (M-F 8:00-5:00) (12)
- 305E CLIN MICROBIOLOGY (M-F 11:00) (8)
- 305BL LAB (W 1:00-4:00; Th 2:00-5:00) (0)
- 307 SEMINAR (T 2:00-4:00) (1)
- 308 CLIN MICROSCOPY (TTH 1:00) (3)
- 308L LAB (F 1:00-4:00) (0)
- 324 CLIN EDUCATION (M-F 8:00-5:00) (1)



**MUSC (Music)**

**PERFORMANCE GROUPS**

- 69c CONCERT BAND (MWF 4:00-5:30) (1)
- 169c CONCERT BAND (MWF 4:00-5:30) (1)
- 269c CONCERT BAND (MWF 4:00-5:30) (1)
- 369c CONCERT BAND (MWF 4:00-5:30) (1)
- 70 SYMPHONIC WIND ENS (MTWTH 1:00) (1)
- 170 SYMPHONIC WIND ENS (MTWTH 1:00) (1)
- 270 SYMPHONIC WIND ENS (MTWTH 1:00) (1)
- 370 SYMPHONIC WIND ENS (MTWTH 1:00) (1)
- 470 SYMPHONIC WIND ENS (MTWTH 1:00) (1)
- 71 SYMPHONY ORCHESTRA (T 7:30-10:00) (1)
- 171 SYMPHONY ORCHESTRA (T 7:30-10:00) (1)
- 271 SYMPHONY ORCHESTRA (T 7:30-10:00) (1)
- 371 SYMPHONY ORCHESTRA (T 7:30-10:00) (1)
- 471 SYMPHONY ORCHESTRA (T 7:30-10:00) (1)
- 71L SYMPH ORCH LAB (MTH 4:00) (0)
- 171L SYMP ORCH LAB (MTH 4:00) (0)
- 271L SYMP ORCH LAB (MTH 4:00) (0)
- 371L SYMP ORCH LAB (MTH 4:00) (0)
- 471L SYMP ORCH LAB (MTH 4:00) (0)
- 73 UNIVERSITY CHORALE (MWF 2:00) (1)
- 173 UNIVERSITY CHORALE (MWF 2:00) (1)
- 273 UNIVERSITY CHORALE (MWF 2:00) (1)
- 373 UNIVERSITY CHORALE (MWF 2:00) (1)
- 75 MENS GLEE CLUB (MWF 12:00) (1)
- 175 MENS GLEE CLUB (MWF 12:00) (1)
- 275 MENS GLEE CLUB (MWF 12:00) (1)
- 375 MENS GLEE CLUB (MWF 12:00) (1)
- 76 WOMENS CHORUS (MW 3:00) (1) (1)
- 176 WOMENS CHORUS (MW 3:00) (1)
- 276 WOMENS CHORUS (MW 3:00) (1)
- 376 WOMENS CHORUS (MW 3:00) (1)
- 77 WOMENS GLEE CLUB (MWF 12:00) (1)
- 177 WOMENS GLEE CLUB (MWF 12:00) (1)
- 277 WOMEN'S GLEE CLUB (MWF 12:00) (1)
- 377 WOMEN'S GLEE CLUB (MWF 12:00) (1)
- 78 CHAMBER SINGERS (MTWTH 2:00) (1)
- 178 CHAMBER SINGERS (MTWTH 2:00) (1)
- 278 CHAMBER SINGERS (MTWTH 2:00) (1)
- 378 CHAMBER SINGERS (MTWTH 2:00) (1)
- 478 CHAMBER SINGERS (MTWTH 2:00) (1)

**CHAMBER GROUPS**

- 87A1 CHAMBER MUSIC (TBA) (1)
- 187A1 CHAMBER MUSIC (TBA) (1)
- 287A1 CHAMBER MUSIC (TBA) (1)
- 387A1 CHAMBER MUSIC (TBA) (1)
- 87B1 CHAMBER MUSIC (TBA) (1)
- 187B1 CHAMBER MUSIC (TBA) (1)
- 287B1 CHAMBER MUSIC (TBA) (1)
- 387B1 CHAMBER MUSIC (TBA) (1)
- 87B2 CHAMBER MUSIC (TBA) (1)
- 187B2 CHAMBER MUSIC (TBA) (1)
- 287B2 CHAMBER MUSIC (TBA) (1)
- 387B2 CHAMBER MUSIC (TBA) (1)
- 87B3 CHAMBER MUSIC (TBA) (1)
- 187B3 CHAMBER MUSIC (TBA) (1)
- 287B3 CHAMBER MUSIC (TBA) (1)
- 387B3 CHAMBER MUSIC (TBA) (1)
- 87C1 CHAMBER MUSIC (TTH 2:00) (1)
- 187C1 CHAMBER MUSIC (TTH 2:00) (1)
- 287C1 CHAMBER MUSIC (TTH 2:00) (1)
- 387C1 CHAMBER MUSIC (TTH 2:00) (1)
- 87D1 CHAMBER MUSIC (TBA) (1)
- 187D1 CHAMBER MUSIC (TBA) (1)
- 287D1 CHAMBER MUSIC (TBA) (1)
- 387D1 CHAMBER MUSIC (TBA) (1)
- 87E1 CHAMBER MUSIC (TTH 7:00-9:00) (1)
- 187E1 CHAMBER MUSIC (TTH 7:00-9:00) (1)
- 287E1 CHAMBER MUSIC (TTH 7:00-9:00) (1)
- 387E1 CHAMBER MUSIC (TTH 7:00-9:00) (1)
- 87E2 CHAMBER MUSIC (TBA) (1)
- 187E2 CHAMBER MUSIC (TBA) (1)
- 287E2 CHAMBER MUSIC (TBA) (1)
- 387E2 CHAMBER MUSIC (TBA) (1)
- 87FL CHAMBER MUSIC (Th 7:00-9:00) (0)
- 187FL CHAMBER MUSIC (Th 7:00-9:00) (0)
- 287FL CHAMBER MUSIC (Th 7:00-9:00) (0)
- 387FL CHAMBER MUSIC (Th 7:00-9:00) (0)
- 87FL CHAMBER MUSIC (T 3:00) (1)
- 187FL CHAMBER MUSIC (T 3:00) (1)
- 287FL CHAMBER MUSIC (T 3:00) (1)
- 387FL CHAMBER MUSIC (T 3:00) (1)
- 87F2 CHAMBER MUSIC (TBA) (1)
- 187F2 CHAMBER MUSIC (TBA) (1)
- 287F2 CHAMBER MUSIC (TBA) (1)
- 387F2 CHAMBER MUSIC (TBA) (1)
- 87H1 CHAMBER MUSIC (MW 3:00) (1)
- 187H1 CHAMBER MUSIC (MW 3:00) (1)
- 287H1 CHAMBER MUSIC (MW 3:00) (1)
- 387H1 CHAMBER MUSIC (MW 3:00) (1)
- 487 CHAMBER MUSIC (TBA) (1)
- 1L RECITAL (Th 3:00) (0)
- 34 COMPOSITION (TTH 12:00) (1)

35A1  
35B1  
35B2  
35B3  
35B4  
35B5  
35AL  
35BL  
35BL  
35BL  
79  
79  
80A1  
80B1  
80B2  
80B3  
80C1  
80C2  
81B1  
81B2  
81B3  
83A1  
83A2  
83B1  
83C1  
84  
85  
120  
120  
120  
120  
120  
120  
120  
120  
120  
121  
124  
134  
135B1  
135B2  
135B3  
135BL  
135BL  
135BL  
151A  
179  
179  
180A1  
180A2  
180B1  
180B2  
180B3  
180B4  
180C1  
180C2  
186B  
188A  
188B  
201  
201  
201  
201  
201  
202  
202  
203  
203  
223B  
223C  
226B  
229B  
234  
235B1  
235B2  
235B3  
235B4  
236A  
260B  
262B  
281  
286B  
293B  
293B  
293B  
326GB  
327  
327L  
333C  
334  
336A  
346C  
366B  
379C  
386B  
395C  
399B  
434

35A1 COMP MUSICIANSHIP (MTWTH 11:00) (4)  
 35B1 COMP MUSICIANSHIP (MTWTH 9:00) (4)  
 35B2 COMP MUSICIANSHIP (MTWTH 9:00) (4)  
 35B3 COMP MUSICIANSHIP (MTWTH 11:00) (4)  
 35B4 COMP MUSICIANSHIP (MTWTH 11:00) (4)  
 35B5 COMP MUSICIANSHIP (MTWTH 12:00) (4)  
 35AL C M LAB (TTH 10:00) (1)  
 35BL C M LAB (TTH 10:00) (1)  
 35BL C M LAB (TTH 10:00) (1)  
 35BL C M LAB (TTH 10:00) (1)  
 35BL C M LAB (TTH 10:00) (1)  
 79 OPERA THEATER (TTH 4:00-6:00) (1)  
 79 OPERA THEATER (TBA) (1)  
 80A1 BEG PIANO GRP (MW 3:00) (1)  
 80B1 BEG PIANO GRP (MW 8:00) (1)  
 80B2 BEG PIANO GRP (MW 10:00) (1)  
 80B3 BEG PIANO GRP (TTH 1:00) (1)  
 80C1 BEG PIANO GRP (MW 2:00) (1)  
 80C2 BEG PIANO GRP (TTH 2:00) (1)  
 81B1 BEG VOICE GRP (MW 10:00) (1)  
 81B2 BEG VOICE GRP (TTH 1:00) (1)  
 81B3 BEG VOICE GRP (TTH 2:00) (1)  
 83A1 WOODWIND GRP (MW 9:00) (1)  
 83A2 WOODWIND GRP (TTH 9:00) (1)  
 83B1 WOODWIND GRP (MW 9:00) (1)  
 83C1 WOODWIND GRP (TTH 2:00) (1)  
 84 BRASS GROUP (TTH 9:00) (1)  
 85 PERCUSSION GRP (TTH 9:00) (1)  
 120 MUSIC APPRECIATION (MW 1:00) (2)  
 120 MUSIC APPRECIATION (MW 1:00) (2)  
 120 MUSIC APPRECIATION (MW 1:00) (2)  
 120 MUSIC APPRECIATION (MW 1:00) (2)  
 120 MUSIC APPRECIATION (TTH 1:00) (2)  
 120 MUSIC APPRECIATION (TTH 1:00) (2)  
 120 MUSIC APPRECIATION (TTH 1:00) (2)  
 120 MUSIC APPRECIATION (TTH 1:00) (2)  
 120 MUSIC APPRECIATION (TTH 1:00) (2)  
 121 ORCHESTRAL MUSIC (MW 2:00) (2)  
 124 MUSC OF WORLDS PEOPLE (TTH 10:00) (2)  
 134 COMPOSITION (T 2:00) (2)  
 135B1 COMP MUSICIANSHIP (MTWTH 9:00) (4)  
 135B2 COMP MUSICIANSHIP (MTWTH 10:00) (4)  
 135B3 COMP MUSICIANSHIP (MTWTH 12:00) (4)  
 135BL COMP MUSIC LAB (TTH 11:00) (1)  
 135BL COMP MUSIC LAB (TTH 11:00) (1)  
 135BL COMP MUSIC LAB (TTH 11:00) (1)  
 151A SERVICE PLAYING (TBA) (2)  
 179 OPERA THEATER (TTH 4:00-6:00) (1)  
 179 OPERA THEATER (TBA) (1)  
 180A1 INT PIANO GRP (MW 12:00) (1)  
 180A2 INT PIANO GRP (TTH 11:00) (1)  
 180B1 INT PIANO GRP (MW 9:00) (1)  
 180B2 INT PIANO GRP (TTH 9:00) (1)  
 180B3 INT PIANO GRP (MW 1:00) (1)  
 180B4 INT PIANO GRP (TTH 10:00) (1)  
 180C1 INT PIANO GRP (MW 11:00) (1)  
 180C2 INT PIANO GRP (TTH 12:00) (1)  
 186B ACCOMPANYING (TBA) (1)  
 188A STRING GROUP (TTH 10:00) (1)  
 188B STRING GROUP (MW 10:00) (1)  
 201 INTR BASIC MUSC SKILLS (M-F 9:00) (4)  
 201 INTR BASIC MUSC SKILLS (M-F 10:00) (4)  
 201 INTR BASIC MUSC SKILLS (M-F 11:00) (4)  
 201 INTR BASIC MUSC SKILLS (M-F 12:00) (4)  
 201 INTR BASIC MUSC SKILLS (M-F 2:00) (4)  
 202 MUSC ED ELE GR (MWF 2:00) (3)  
 202 MUSC ED ELE GR (MWF 1:00) (3)  
 203 MUSC ED INT GR (MWF 11:00) (3)  
 203 MUSC ED INT GR (MWF 9:00) (3)  
 223B MUSC ED CUR ELEM (TTH 11:00-12:30) (3)  
 223C INST MUSIC ED CUR (TTH 11:00-12:30) (3)  
 226B MUSIC THERAPY II (MWF 9:00) (3)  
 229B ORIENT TO THERAPY (TBA) (1)  
 234 COMPOSITION (T 2:00 & 1 HR TBA) (3)  
 235B1 COMP MUSICIANSHIP (MWF 8:00) (3)  
 235B2 COMP MUSICIANSHIP (MWF 10:00) (3)  
 235B3 COMP MUSICIANSHIP (MWF 10:00) (3)  
 235B4 COMP MUSICIANSHIP (MWF 10:00) (3)  
 236A ELEC MUSC COMP (MWF 12:00) (3)  
 260B PIANO PEDAGOGY (TTH 10:00) (2)  
 262B VOICE PEDAGOGY (TTH 1:00) (2)  
 281 VOCAL FUNDAMENTALS (MW 12:00) (1)  
 286B ACCOMPANYING (TBA) (1)  
 293B COND & SCORING (MWF 11:00) (3)  
 293B COND & SCORING (MWF 11:00) (3)  
 293B COND & SCORING (MWF 11:00) (3)  
 293B COND & SCORING (MWF 11:00) (3)  
 326CB PSYC FOUND MUSC (MWF 12:00) (3)  
 327 MUSC GRP ACT (TTH 9:00) (1)  
 327L MUSC GRP ACT LAB (TH 6:00-8:00 P.M.) (0)  
 333C ADV ORCH (MWF 2:00) (3)  
 334 COMPOSITION (T 2:00 & 1 HR TBA) (3)  
 336A ADV COMP ELECT (TBA) (3)  
 346C FOLK MUSC EUROPE, AMER (MWF 10:00) (3)  
 366B APPLIED PIANO PED (TTH 2:00) (3)  
 379C OPERA HISTORY (MWF 9:00) (3)  
 386B ACCOMPANYING (TBA) (1)  
 395C INST PROB & TECH (MWF 9:00) (3)  
 399B HONORS SEMINAR (TBA) (3)  
 434 COMPOSITION (T 2:00 & 1 HR TBA) (3)



436 PROB ELEC MUSIC (TBA) (3)  
 439 DIR STUDY THEORY (TBA) (3)  
 441 MUSC OF RENAISSANCE (MWF 3:00) (3)  
 449 SEM RES IN MUSC (TBA) (3)  
 492 SEM PROB MUSC ED (TBA) (3)  
 493 SEM PROB MUSC ED (TBA) (3)  
 495 PHILOSOPHY MUSC ED (T 6:30-9:30) (3)  
 498 CRITIQUE MUSC ED (TTH 1:00-2:30) (3)  
 499B THESIS (TBA) (3)

**NURS (Nursing)**

75 HIST OF NURSING (MTH 4:00) (2)  
 110 MEDIC SURG NURSING (MTHF 11:00-1:00) (8)  
 110L LAB (T 8:00-4:00) (0)  
 110L LAB (W 8:00-4:00) (0)  
 105 NUTRITION (MF 1:00) (3)  
 105L LAB (M 3:00-5:00) (0)  
 105L LAB (T 3:00-5:00) (0)  
 105L LAB (W 3:00-5:00) (0)  
 105L LAB (TH 3:00-5:00) (0)  
 201 MEDIC SURG NURSING (MF 10:00-12:00; M 2:00-4:00) (13)  
 201L LAB (T 2:00-7:00; WTH 2:00-11:30) (0)  
 210 MATER & CHILD CARE (M 9:00-12:00; W 1:00-3:00; F 1:00) (10)  
 210L LAB (T 8:00-4:30; W 8:00-12:00) (0)  
 210L LAB (TH 8:00-4:30; F 8:00-12:00) (0)  
 220 MATER & CHILD CARE (M 12:00-2:00; W 1:00-3:00; F 1:00) (9)  
 220L LAB (T 8:00-4:30; W 8:00-12:00) (0)  
 220L LAB (TH 8:00-4:30; F 8:00-12:00) (0)  
 300 PSYCHIATRIC NURS (THF 9:00-12:00) (13)  
 300L LAB (MTW 8:00-4:00) (0)  
 315 COMMUN HLTH NURS (M 8:30-12:30; F 9:00-12:00) (14)  
 315L LAB (TWTW 8:30-4:30) (0)  
 330 TRENDS & RELATIONS (MF 8:00-9:30) (3)  
 340 PROF NURSING PROBL (W 6:30-8:30) (2)  
 350 COMPREHENSIVE NURS (MTHF 10:00-12:00) (10)  
 350L LAB (TW 7:00-4:00) (0)

**OCCT (Occupational Therapy)**

221 AGENTS II (M 3:00) (2)  
 221L LAB (T 2:30-4:30) (0)  
 222 O T THEORY II (TTH 10:00-11:30) (3)  
 313 O T TECHNIQUES I (F 3:00) (3)  
 313L LAB (MW 1:00-3:00) (0)  
 322 O T THEORY V (MW 10:30-12:00) (4)  
 322L LAB (F 10:00-12:00) (0)  
 332 O T THEORY VI (TTH 1:00-2:30) (3)  
 335 ADM SUP OF O T DPT (MW 9:00-10:30) (3)  
 366 PROF LITERATURE (TBA) (3)

**PRCA (Parks, Recreation, Con.)**

127 PLAYGRD COM REC (MWF 1:00) (3)  
 200 OBS REC PROF SET (TTH 8:00) (2)  
 312 REC FIELDWORK (M-F 4:00) (5)  
 351G REC PLAN & ADMIN (TH 6:30-9:30) (3)

**PHIL (Philosophy)**

1 INTRO PHILOSOPHY I (MWF 9:00) (3)  
 1 INTRO PHILOSOPHY I (MWF 10:00) (3)  
 1 INTRO PHILOSOPHY I (TTH 12:00-1:15) (3)  
 1 INTRO PHILOSOPHY I (MWF 2:00) (3)  
 1 INTRO PHILOSOPHY I (MWF 4:00) (3)  
 2 INTRO PHILOSOPHY II (MWF 8:00) (3)  
 2 INTRO PHILOSOPHY II (MWF 11:00) (3)  
 3 INTRO PHILOSOPHY III (MWF 1:00) (3)  
 51 BIBLE ITS BACKGR II (MWF 9:00) (3)  
 70 INTRO TO LOGIC (M-F 9:00) (5)  
 70 INTRO TO LOGIC (M-F 10:00) (5)  
 70 INTRO TO LOGIC (M-F 11:00) (5)  
 70 INTRO TO LOGIC (M-F 2:00) (5)  
 101 SUV MEDIEVAL PHIL (MWF 10:00) (3)  
 102 SUV CONTEMP PHIL (MWF 11:00) (3)  
 102 SUV CONTEMP PHIL (MWF 1:00) (3)  
 103 ANCIENT PHILOSOPHY (MWF 12:00) (3)  
 152 NEAR EAST REL THOT (M-F 11:00) (5)  
 160 INTRO TO ETHICS (M-F 9:00) (5)  
 160 INTRO TO ETHICS (M-F 2:00) (5)  
 180 INTRO PHIL ART (MWF 12:00) (3)  
 180 INTRO PHIL ART (MWF 4:00) (3)  
 181 INTRO PHIL SCI (MWF 10:00) (3)  
 203 EMPIRICISM (TTH 11:00-12:50) (5)  
 240 INTERMED LOGIC (M-F 12:00) (5)  
 303 RATIONALISM (TTH 9:00-10:50) (5)  
 312G EPISTEMOLOGY (TTH 1:00-2:50) (5)

**PHYE (Physical Education)**

12M FOUND PHYE LAB (TTH 8:30-9:30) (1)  
 12M FOUND PHYE LAB (TTH 8:30-9:30) (1)  
 12M FOUND PHYE LAB (TTH 10:30-11:30) (1)

- 12W FOUND PHYE LAB (TTh 10:30-11:30) (1)
- 12M FOUND PHYE LAB (TTh 12:30-1:30) (1)
- 12W FOUND PHYE LAB (TTh 12:30-1:30) (1)
- 12M FOUND PHYE LAB (TTh 2:30-3:30) (1)
- 12W FOUND PHYE LAB (TTh 2:30-3:30) (1)
- 12M BASKETBALL (MW 8:00) (1)
- 12M BASKETBALL (MW 9:00) (1)
- 18 ELM SWIMMING (TTh 9:30-10:30) (1)
- \* 26 ADPT ACTIVITIES (MW 12:00) (1)
- 55M FR SWIMMING (M-F 4:00-6:00) (1)
- 61M FR BASKETBALL (M-F 4:00-6:00) (1)
- 91M FR WRESTLING (M-F 4:00-6:00) (1)
- 101M CONDITIONING (TTh 9:30-10:30) (1)
- 101M CONDITIONING (TTh 11:30-12:30) (1)
- 101M CONDITIONING (MW 9:00) (1)
- 107M SQ DANCE (MW 1:00) (1)
- 107W SQ DANCE (MW 1:00) (1)
- 108 ELM MOD DANCE (MW 9:00) (1)
- 109 INT MOD DANCE (WF 10:00) (1)
- 111M SOC DANCE (TTh 9:30-10:30) (1)
- 111W SOC DANCE (TTh 9:30-10:30) (1)



\*ONLY FOR INDIVIDUALS WHO ARE RESTRICTED IN THEIR ACTIVITIES DUE TO MEDICAL REASONS.

- 113 ADV SOC DANCE (WF 12:00) (1)
- 115 TAP DANCE (MF 11:00) (1)
- 116 BADMINTON (TTh 11:30-12:30) (1)
- 116 BADMINTON (TTh 1:30-2:30) (1)
- 118 INT SWIMMING (MF 11:00) (1)
- 119M VOLLEYBALL (TTh 11:30-12:30) (1)
- 119W VOLLEYBALL (MW 12:00) (1)
- 119M VOLLEYBALL (MW 12:00) (1)
- 138W SYNC SWIMMING (Th 6:30-8:30) (1)
- 148 ADV SWIMMING (MF 11:00) (1)
- 150 MECH MOTION (MF 11:00) (1)
- 150 MECH MOTION (TTh 1:00) (1)
- 155M VAR SWIMMING (M-F 4:00-6:00) (1)
- 161M VAR BASKETBALL (M-F 4:00-6:00) (1)
- 163 SAT SWIMMING (MF 8:00-10:00) (2)
- 166 SAT TUMBLING (TTh 10:00-12:00) (2)
- 185 SAT RHYTHMS (MW 2:00-4:00) (2)
- 186W SAT MOD DANCE (TTh 12:00-2:00) (2)
- 187M SAT WRESTLING (TTh 10:00-12:00) (2)
- 191M VAR WRESTLING (M-F 4:00-6:00) (1)
- 204 TUTORING (MW 4:00) (1)
- 230 PROC PHYE EARLY CH (MWF 2:00) (3)
- 245 PROC PHYE ELM SCH (MWF 9:00) (3)
- 245 PROC PHYE ELM SCH (TTh 9:00-10:30) (3)
- 245 PROC PHYE ELM SCH (MWF 10:00) (3)
- 245 PROC PHYE ELM SCH (MWF 12:00) (3)
- 246 SAT ELM SCH INS (M-F 1:00) (3)
- 250 KINESIOLOGY (MWF 10:00) (3)
- 252W SAT TEAM SPTS OFF (MF 10:00-12:00) (2)
- 253W SAT BASKETBALL (MW 8:00-10:00) (2)
- 283M SAT BASKETBALL (MF 10:00-12:00) (2)
- 303 ORG ADM HLTH & PHYE (M-F 9:00) (5)
- 304 TEST & MEAS (MWF 8:00) (3)
- 305 PHYSIO OF EXER (MWF 2:00) (3)
- 306 DEV ADPT ACT (MWF 12:00) (3)
- 323M METH TCH PHYE (TTh 12:00-1:30) (3)
- 323M METH TCH PHYE (TTh 2:00-3:30) (3)
- 385G PER EMOT HAND (MWF 1:00) (3)
- 413 FOUND PHYE (MWF 9:00) (3)
- 431 ADMIN ATH (MWF 8:00) (3)
- 491 PHYSIO EXER (M 6:30-9:30) (3)
- 499A THESIS (M 6:30-9:30) (3)
- 499B THESIS (T 6:30-9:30) (3)
- 499C THESIS (W 6:30-9:30) (3)

**PTHE (Physical Therapy)**

- 223 PHYSICAL AGENTS (MWF 1:00-3:00) (2)
- 229 CLINICAL ED I (Th 8:00-5:00) (1)
- 238 SEMINAR I (T 9:00-11:00) (1)
- 329 CLINICAL ED V (M-F 8:00-5:00) (15)

**PHYS (Physics)**

- 5 BAS PHYS I PHY & ENV (MTWTh 9:00) (4)
- 5 BAS PHYS I PHY & ENV (MTWTh 10:00) (4)
- 5 BAS PHYS I PHY & ENV (MTWTh 11:00) (4)
- 5 BAS PHYS I PHY & ENV (MTWTh 12:00) (4)
- 5 BAS PHYS I PHY & ENV (MTWTh 1:00) (4)
- 7 BAS PHYS III PH & MAN (MTWTh 10:00) (4)
- 7 BAS PHYS III PH & MAN (MTWTh 12:00) (4)
- 8 BAS PHYS IV PH & UNV (MWF 3:00) (4)
- 8L LAB (TBA) (0)
- 15L GENERAL PHYS LAB (M 4:00) (1)
- 16L GENERAL PHYS LAB (T 3:00) (1)
- 16L GENERAL PHYS LAB (Th 4:00) (1)
- 16L GENERAL PHYS LAB (W 4:00) (1)
- 17L GENERAL PHYS LAB (Th 3:00) (1)
- 25 GENERAL PHYSICS (MWF 9:00) (3)
- 26 GENERAL PHYSICS (MWF 8:00) (3)
- 27 GENERAL PHYSICS (MWF 2:00) (3)
- 27 GENERAL PHYSICS (MWF 12:00) (3)
- 109 PHYS OF SOUND (MWF 9:00) (4)
- 109L LAB (T 8:00-10:00) (0)



- 109L LAB (Th 8:00-10:00) (0)
- 136 ADV GEN PHYS II (MTWTh 1:00) (4)
- 157 RAD TECHNIQUES (TTh 10:00-11:15) (4)
- 157L LAB (T 3:00-5:00) (0)
- 225 MECHANICS (MTWTh 9:00) (4)
- 227 OPTICS (MWF 2:00) (4)
- 227L LAB (TBA) (0)
- 233 INTR THEO PHYS II (MWF 11:00) (3)
- 297 PROBS IN PHYS (TBA) (1)
- 298 PROBS IN PHYS (TBA) (1)
- 299 PROBS IN PHYS (TBA) (1)
- 326G STATISTICAL PHYS (MWF 11:00) (3)
- 335G MATH PHYS II (TTh 11:00-12:15) (3)
- 402 QUAN THEO OF MAT (MWF 10:00) (3)
- 429B MOD PHYS LAB TCHRS (MW 2:00-4:00) (2)
- 449 APPL E & M (MWF 8:00) (3)
- 481 READINGS IN PHYS (TBA) (1)
- 482 READINGS IN PHYS (TBA) (1)
- 483 READINGS IN PHYS (TBA) (1)
- 488 INTR TO RESEARCH (TBA) (3)
- 498 INTERNSHIP (TBA) (0)
- 499A THESIS (TBA) (3)
- 499B THESIS (TBA) (3)
- 499C THESIS (TBA) (3)
- 499R RESIDENCE (TBA) (0)

**POLS (Political Science)**

- 10 AMER GOVERNMENT (M-F 9:00) (5)
- 10 AMER GOVERNMENT (M-F 10:00) (5)
- 10 AMER GOVERNMENT (M-F 10:00) (5)
- 10 AMER GOVERNMENT (M-F 11:00) (5)
- 10 AMER GOVERNMENT (M-F 11:00) (5)
- 10 AMER GOVERNMENT (M-F 12:00) (5)
- 10 AMER GOVERNMENT (M-F 1:00) (5)
- 11 CONT POLITICAL ISS (M-F 9:00) (5)
- 102 STATE & LOCAL GOVT (MWF 11:00) (3)
- 102 STATE & LOCAL GOVT (TTh 1:00-2:15) (3)
- 102 STATE & LOCAL GOVT (TTh 2:00-3:15) (3)
- 107 INT COMP GOVT POL (MWF 10:00) (3)
- 107 INT COMP GOVT POL (MWF 2:00) (3)
- 108 INTRO POLIT THEORY (MWF 9:00) (3)
- 202 AMER LEGISLATURE (M-F 8:00) (5)
- 202 AMER LEGISLATURE (M-F 10:00) (5)
- 215 STUD GOVT & POLIT (T 3:00-4:15) (1)
- 220 AM POL PRS POLIT (M-F 9:00) (5)
- 220 AM POL PRS POLIT (M-F 10:00) (5)
- 252 PUBLIC ADMINSTRAT (M-F 11:00) (5)
- 255 NATL SECURITY POL (M-F 11:00) (5)
- 280 S ASIAN POL SYSTEM (M 6:30-9:30) (3)
- 282 E ASIAN POL SYSTEM (MWF 12:00) (3)
- 321 CON SO POL (M-F 12:00) (5)
- 330 INTERNATL ORGAN (MWF 9:00) (3)
- 390 DIR READING POL SC (TBA) (1)
- 390 DIR READING POL SC (TBA) (2)
- 390 DIR READING POL SC (TBA) (3)
- 398 HONORS II (TBA) (3)
- 401 SEMINAR POL THEORY (TTh 4:00-5:15) (3)
- 426 CONS LAW CIVIL LIB (W 6:30-9:30) (3)
- 432 READ COMPAR GOVT (TBA) (3)
- 452 SEM PUBLIC ADMIN (M 6:30-9:30) (3)
- 490 ADV READ IN POLS (TBA) (3)
- 499A THESIS (TBA) (3)
- 499B THESIS (TBA) (3)

**PSYC (Psychology)**

- 50 GENERAL PSYC I (MWF 8:00) (3)
- 50 GENERAL PSYC I (MWF 8:00) (3)
- 50 GENERAL PSYC I (MWF 8:00) (3)
- 50 GENERAL PSYC I (MWF 8:00) (3)
- 50 GENERAL PSYC I (MWF 8:00) (3)
- 50 GENERAL PSYC I (MWF 12:00) (3)
- 50 GENERAL PSYC I (MWF 12:00) (3)
- 50 GENERAL PSYC I (MWF 12:00) (3)
- 50 GENERAL PSYC I (MWF 12:00) (3)
- 50 GENERAL PSYC I (MWF 12:00) (3)
- 50 GENERAL PSYC I (MWF 12:00) (3)
- 50 GENERAL PSYC I (MWF 1:00) (3)
- 50 GENERAL PSYC I (MWF 1:00) (3)
- 50 GENERAL PSYC I (MWF 1:00) (3)
- 50 GENERAL PSYC I (MWF 2:00) (3)
- 50 GENERAL PSYC I (MWF 2:00) (3)
- 50 GENERAL PSYC I (MWF 3:00) (3)
- 51 GENERAL PSYC II (MWF 9:00) (3)
- 51 GENERAL PSYC II (MWF 10:00) (3)
- 51 GENERAL PSYC II (MWF 11:00) (3)
- 101 PSYC STATISTICS (MWF 9:00) (5)
- 101L LAB (MW 2:00-4:00) (0)
- 101 PSYC STATISTICS (MWF 10:00) (5)
- 101L LAB (TTh 10:00-12:00) (0)
- 101 PSYC STATISTICS (TTh 10:00-11:30) (5)
- 101L LAB (MW 11:00-1:00) (0)
- 101 PSYC STATISTICS (MWF 1:00) (5)
- 101L LAB (TTh 1:00-3:00) (0)
- 150 APPLIED (MWF 8:00) (3)
- 150 APPLIED (MWF 11:00) (3)
- 201 PSYC OF CHILDHOOD (MTWF 9:00) (4)
- 201 PSYC OF CHILDHOOD (MTWF 3:00) (4)
- 206 DEVELOPMENTAL PSYC (M-F 11:00) (5)



- 210
- 210L
- 210
- 210L
- 218
- 221
- 221
- 225
- 225
- 240
- 240
- 240
- 240
- 241
- 241
- 275
- 275
- 275

**Psy**

- 300
- 300
- 305
- 305
- 305
- 305
- 310
- 310
- 310
- 313G
- 313GL
- 315
- 316
- 317
- 318
- 320G
- 325G
- 370G
- 375G
- 380G
- 395G
- 396A
- 396B
- 400A
- 400B
- 400C
- 401
- 405
- 412
- 417
- 425
- 426
- 427
- 440
- 469
- 471
- 475
- 480A
- 480B
- 488
- 495A
- 495B
- 495C
- 495D
- 499A
- 499B
- 499C

**RECO**

- 461
- 463
- 471
- 472
- 479
- 480A
- 480B
- 480C
- 480D
- 489A
- 489B
- 489C

**SCIE**

- 55
- 55
- 55
- 55L
- 55L
- 55L
- 55L
- 56
- 56
- 56
- 56L
- 56L

- 210 EXPERIMENTAL PSYC (MWF 10:00) (5)
- 210L LAB (TTH 10:00-12:00) (0)
- 210 EXPERIMENTAL PSYC (MWF 2:00) (5)
- 210L LAB (TTH 2:00-4:00) (0)
- 218 PSYC DISEAS & DISAB (TTH 9:00) (2)
- 221 SOCIAL PSYCHOLOGY (MWF 10:00) (3)
- 221 SOCIAL PSYCHOLOGY (MWF 11:00) (3)
- 225 PSYC OF LEARNING (TTH 1:00-2:30) (3)
- 225 PSYC OF LEARNING (MWF 2:00) (3)
- 240 PSYC OF ADOLESCENCE (MTWTH 9:00) (4)
- 240 PSYC OF ADOLESCENCE (MTWF 10:00) (4)
- 240 PSYC OF ADOLESCENCE (MTWTH 11:00) (4)
- 240 PSYC OF ADOLESCENCE (MTWTH 1:00) (4)
- 241 PERS INDUS PSYC I (MWF 11:00) (3)
- 241 PERS INDUS PSYC I (MWF 1:00) (3)
- 275 MENTAL HYGIENE (MWF 9:00) (3)
- 275 MENTAL HYGIENE (MWF 11:00) (3)
- 275 MENTAL HYGIENE (MWF 3:00) (3)

**Psychology (Cont.)**

- 300 PSYC OF PERSONALITY (MWF 2:00) (3)
- 300 PSYC OF PERSONALITY (MWF 3:00) (3)
- 305 EDUCATIONAL PSYC (M-F 9:00) (5)
- 305 EDUCATIONAL PSYC (M-F 10:00) (5)
- 305 EDUCATIONAL PSYC (M-F 10:00) (5)
- 305 EDUCATIONAL PSYC (M-F 11:00) (5)
- 305 EDUCATIONAL PSYC (TTH 1:00-3:00; W 2:00) (5)
- 310 PHYSIOLOGICAL PSYC (MWF 9:00) (3)
- 310 PHYSIOLOGICAL PSYC (MWF 11:00) (3)
- 313G LAB METH PHYSIO PSYC (T 11:00) (3)
- 313GL LAB (T 2:00-6:00) (0)
- 315 READINGS (TBA) (1)
- 316 READINGS (TBA) (1)
- 317 READINGS (TBA) (1)
- 318 READINGS (TBA) (1)
- 320G TEST CONST & ANAL (MWF 9:00) (3)
- 325G INTRO TO PSYC TST (TTH 1:30-3:00) (3)
- 370G MENT HYG IN SCHOOL (MWF 9:00) (3)
- 375G ABNORMAL PSYC (MWF 10:00) (3)
- 380G PSYC OF EXCEP CHILD (MWF 10:00) (3)
- 395G DIR READINGS (TBA) (3)
- 396A PSYC RESEARCH (TBA) (3)
- 396B PSYC RESEARCH (TBA) (3)
- 400A PROB IN PSYC (TBA) (1)
- 400B PROB IN PSYC (TBA) (1)
- 400C PROB IN PSYC (TBA) (1)
- 401 CHILD PSYC (MWF 1:00) (3)
- 405 ADV EDUC PSYC (T 6:30-9:30) (3)
- 412 ADV PHYSIO PSYC (TTH 9:00-10:30) (3)
- 417 IND TSTS OF EXCEP CH (MW 2:00-3:30) (3)
- 425 THEO OF LEARNING (TTH 1:00-2:30) (3)
- 426 MOTIVATION (MWF 9:00) (3)
- 427 ADV PRIN OF LEARNING (TH 1:00-4:00) (3)
- 440 INTERVIEWING (MWF 1:00) (3)
- 469 SEM IN BEH MOD (M 6:30-9:30) (3)
- 471 SEM IN SENS TRAINING (TTH 9:00-10:30) (3)
- 475 PERSONALITY THEORY (MWF 11:00) (3)
- 480A CLINICAL PRACT (TBA) (6)
- 480B CLINICAL PRACT (TBA) (6)
- 488 RESEARCH DESIGN (W 7:00-10:00) (3)
- 495A SCHOOL PRACTICUM (TBA) (3)
- 495B SCHOOL PRACTICUM (TBA) (3)
- 495C SCHOOL PRACTICUM (TBA) (3)
- 495D SCHOOL PRACTICUM (TBA) (3)
- 499A THESIS (TBA) (3)
- 499B THESIS (TBA) (3)
- 499C THESIS (TBA) (3)

**RECO (Rehabilitation Counseling)**

- 461 DIR READ IN REHAB (TBA) (3)
- 463 ADMINISTRATION (T 6:30-9:30) (3)
- 471 SUP PRAC COUNSEL (TBA) (3)
- 472 SEMINAR (MW 10:00-11:30) (3)
- 479 MEDICAL ASPECTS (M 6:30-9:30) (3)
- 480A INTERNSHIP (TBA) (3)
- 480B INTERNSHIP (TBA) (3)
- 480C INTERNSHIP (TBA) (3)
- 480D INTERNSHIP (TBA) (3)
- 489A RESEARCH (TBA) (3)
- 489B RESEARCH (TBA) (3)
- 489C RESEARCH (TBA) (3)

**SCIE (Science Education)**

- 55 PHYS SCI I ELE MAJ (MW 9:00) (4)
- 55 PHYS SCI I ELE MAJ (MW 10:00) (4)
- 55 PHYS SCI I ELE MAJ (MW 1:00) (4)
- 55 PHYS SCI I ELE MAJ (MW 2:00) (4)
- 55L LAB (TTH 8:00-10:00) (0)
- 55L LAB (TTH 10:00-12:00) (0)
- 55L LAB (TTH 12:00-2:00) (0)
- 55L LAB (TTH 2:00-4:00) (0)
- 56 BIOL SCI ELE MAJ (MWF 9:00) (4)
- 56 BIOL SCI ELE MAJ (MWF 10:00) (4)
- 56 BIOL SCI ELE MAJ (MWF 8:00) (4)
- 56L LAB (T 9:00-12:00) (0)
- 56L LAB (T 1:00-4:00) (0)



- 56L LAB (W 1:00-4:00) (0)
- 56L LAB (TH 9:00-12:00) (0)
- 56L LAB (TH 1:00-4:00) (0)
- 111 PHOTOGRAPHY (T 11:00) (3)
- 111L LAB (T 1:00-5:00) (0)
- 111L LAB (TH 1:00-5:00) (0)
- 155 PHYS SCI II ELE MAJ (TTH 9:00) (4)
- 155 PHYS SCI II ELE MAJ (TTH 10:00) (4)
- 155 PHYS SCI II ELE MAJ (TTH 1:00) (4)
- 155 PHYS SCI II ELE MAJ (TTH 2:00) (4)
- 155L LAB (MW 8:00-10:00) (0)
- 155L LAB (MW 10:00-12:00) (0)
- 155L LAB (MW 12:00-2:00) (0)
- 155L LAB (MW 2:00-4:00) (0)
- 206 INVEST IN BIOL SCIE (MW 1:00-3:30) (3)
- 208 INVEST IN PHYS SCI (TTH 1:00-3:30) (3)
- 221M TEA SCI ELE SCH (MWF 9:00) (3)
- 221M TEA SCI ELE SCH (MWF 10:00) (3)

**Science Education (Cont.)**

- 221M TEA SCI ELE SCH (MWF 11:00) (3)
- 221M TEA SCI ELE SCH (MWF 1:00) (3)
- 221M TEA SCI ELE SCH (MWF 2:00) (3)
- 235 ASTRONOMY (TTH 10:00) (3)
- 235L LAB (T 7:00-9:00) (0)
- 322G APPRENTICESHIP SCI (TBA) (3)
- 323M SCIENCE METHODS (TTH 10:00-12:30) (3)
- 325G CONT APP TO TEA BICL (TH 6:30-9:30) (3)
- 400A PROB IN SCIE EDUC (TBA) (3)
- 400B PROB IN SCIE EDUC (TBA) (3)
- 400C PROB IN SCIE EDUC (TBA) (3)
- 407 HIST & PHIL OF SCIE (M 6:30-9:30) (3)
- 417 SEL TOP IN EARTH SCI (TH 6:30-9:30) (3)

**SOCW (Social Work)**

- 50 ORIENT TO SOC WORK (WF 9:00-10:30) (3)
- 200 SOCIAL WEL LEGIS (MW 2:00-3:30) (3)
- 201 FUND INTERV SOCW (TTH 9:00-10:30) (3)
- 201 FUND INTERV SOCW (M 9:00-12:00) (3)
- 240 INTRO SOCIAL WORK (MW 2:00-3:30) (3)
- 240 INTRO SOCIAL WORK (TTH 9:00-10:30) (3)
- 260A PROC OF SOCW INTER (MW 2:00-3:30) (3)
- 260B PROC SOCW INTER (MW 11:00-12:30) (3)
- 260B PROC SOCW INTER (TTH 2:00-3:30) (3)
- 265A SOC POL ISS & PROG (MW 9:30-11:00) (3)
- 265B SOC POL ISS & PROG (TTH 10:30-12:00) (3)
- 265B SOC POL ISS & PROG (T 2:00-5:00) (3)
- 301 FIELD EDUC & SEM (M 9:30-12:30) (15)
- 301 FIELD EDUC & SEM (M 9:30-12:30) (15)
- 375G COM SERV FOR CHILD (T 3:30-6:30) (3)
- 380G FAMILY COUNSELING (TH 2:00-5:00) (3)

**SOCI (Sociology)**

- 25 COURTSHIP & MARRIAGE (MWF 8:00) (3)
- 110 INTR SOCIOLOGY (M-F 8:00) (5)
- 110 INTR SOCIOLOGY (M-F 9:00) (5)
- 110 INTR SOCIOLOGY (M-F 10:00) (5)
- 110 INTR SOCIOLOGY (M-F 11:00) (5)
- 110 INTR SOCIOLOGY (M-F 12:00) (5)
- 110 INTR SOCIOLOGY (M-F 1:00) (5)
- 111 MODERN SOCIAL PROB (M-F 8:00) (5)
- 111 MODERN SOCIAL PROBLEMS (M-F 10:00) (5)
- 111 MODERN SOCIAL PROB (M-F 11:00) (5)
- 222 RURAL SOCIOLOGY (MWF 10:00) (3)
- 225 URBAN SOCIOLOGY (M-F 1:00) (5)
- 280 INDUSTRIAL SOCIOLOGY (MWF 11:00) (3)
- 289 COMMUNITY ORGANIZATION (MWF 8:00) (3)
- 325 MARRIAGE & FAMILY (M-F 9:00) (5)
- 330 CRIMINOLOGY (M-F 10:00) (5)
- 331G JUVENILE DELINQUENCY (W 6:30-9:30) (3)
- \*335G SOCI OF MARRIAGE PROB (M 6:30-9:30) (3)
- 336G SOCIOLOGY OF THE AGED (TTH 9:00-10:30) (3)
- 337 ADVANCED PRINCIPLES (MWF 1:00) (3)
- 345 RACIAL & CULT MIN (MWF 12:00) (3)
- 347 SOCIAL STRAT (MWF 9:00) (3)
- 370 METH OF SOC RES (M-F 9:00) (5)
- 385G HIST OF SOC (M-F 11:00) (5)
- 429 SEM SOC ORG (T 6:30-9:30) (3)
- 431 SEM DEV BEH (TTH 1:00-2:30) (3)
- 480 TECH OF POP ANAL (MW 1:00-2:30) (3)
- 488 SEM RES METH (TTH 3:00-4:30) (3)
- 492A READ IN SOCIOLOGY (TBA) (1)
- 492B READ IN SOCIOLOGY (TBA) (2)
- 492C READ IN SOCIOLOGY (TBA) (3)
- 499A THESIS (TBA) (3)
- 499B THESIS (TBA) (3)
- 499C THESIS (TBA) (3)

\*BY PERMISSION OF INSTRUCTOR ONLY.

**SPCH (Speech)**

- 119 VOICE & DICTION (MWF 10:00) (3)
- 119 VOICE & DICTION (MWF 11:00) (3)



- 119 VOICE & DICTION (MWF 1:00) (3)
- 119 VOICE & DICTION (TTH 10:00-11:30) (3)
- 119 VOICE & DICTION (MWF 8:00) (3)
- 119 VOICE & DICTION (MWF 9:00) (3)
- 119 VOICE & DICTION (TTH 1:00-2:30) (3)
- 119 VOICE & DICTION (TTH 8:00-9:30) (3)
- 119 VOICE & DICTION (MW 2:00-3:30) (3)
- 119 VOICE & DICTION (MW 2:00-3:30) (3)
- 119 VOICE & DICTION (TTH 12:00-1:30) (3)
- 119 VOICE & DICTION (TTH 12:00-1:30) (3)
- 119 VOICE & DICTION (TTH 2:00-3:30) (3)
- 119 VOICE & DICTION (MW 2:00-3:30) (3)
- 119 VOICE & DICTION (TTH 8:00-9:30) (3)
- 119 VOICE & DICTION (TTH 1:00-2:30) (3)
- 119 VOICE & DICTION (TTH 2:00-3:30) (3)
- 125 FUND BCASTING (TTH 10:00-11:30) (3)
- 126 RADIO & TV SPKNG (TTH 1:00) (2)
- 180 BUS & PROF SPCH (MWF 11:00) (3)
- 180 BUS & PROF SPCH (MWF 9:00) (3)

Speech (Cont.)

- 209 ADV VOICE & DIC (MWF 11:00) (3)
- 217 PUBLIC SPEAKING (MWF 9:00) (3)
- 227 DEBATE (TTH 2:00-3:30) (3)
- 238A MOTION PICS TV (TTH 2:00-3:30) (3)
- 360 ADV ORAL INTERP (MWF 10:00) (3)

SLAP (Speech, Lang. & Aud. Path.)

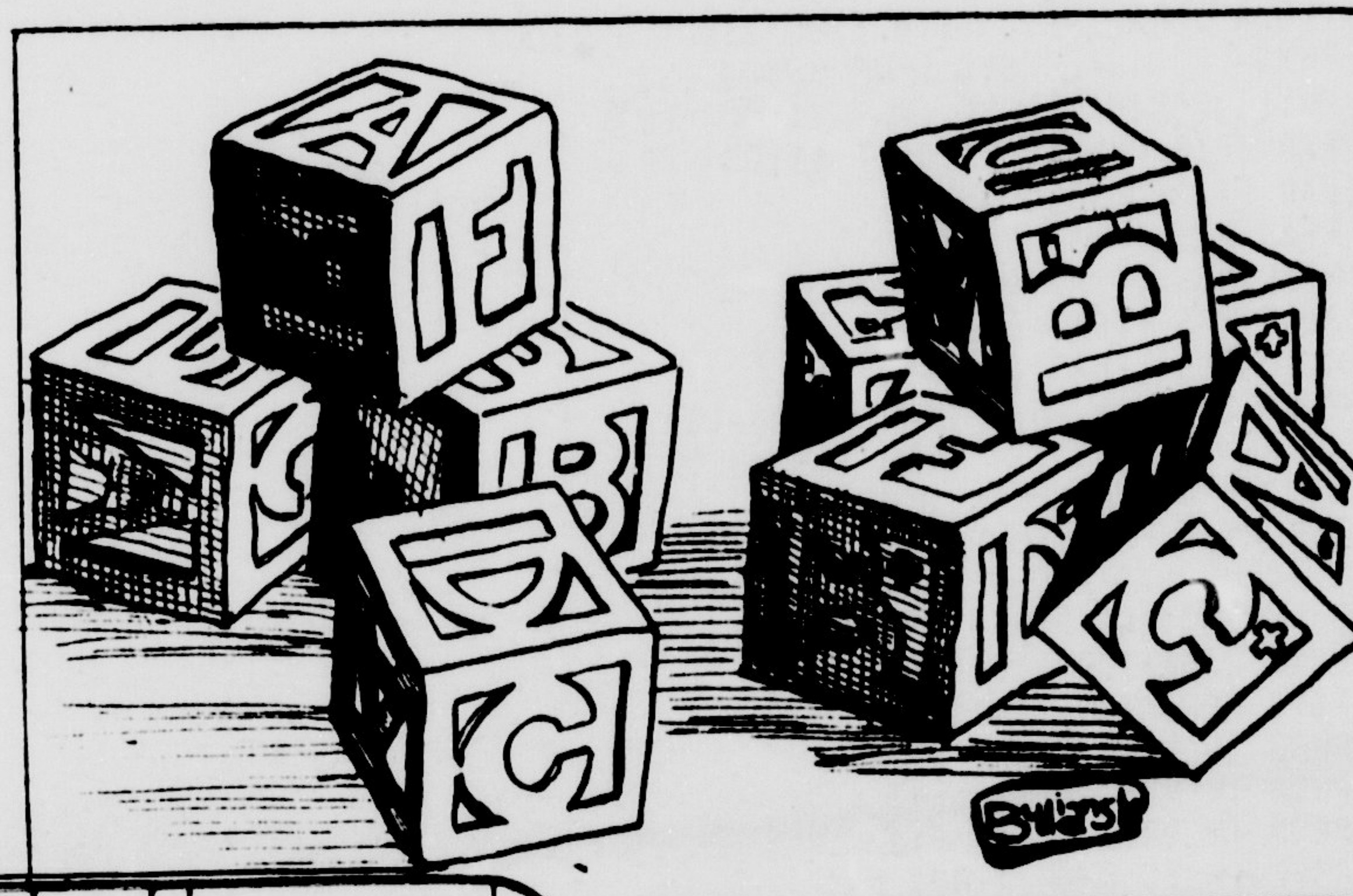
- 166 PRIN SPCH CORR (MW 8:00-9:30) (3)
- 210 PRIN COMM (MW 9:30-11:00) (3)
- 301G ORG SPCH PROG (M 6:30-9:30) (3)
- 303 STUTTERING (TTHF 11:00) (3)
- 312 AURAL REHAB (W 9:00-10:30) (3)
- 324G ST TEACHING SP & HRG (TBA) (12)
- 340A APPLD SPCH CORR (W 4:00) (3)
- 340B APPLD SPCH CORR (W 4:00) (3)
- 362 SPCH PATHOLOGY (TTH 9:00-10:30) (3)
- 413 LANG DISORDERS (T 6:30-9:30) (3)
- 448 HEARING TESTING (T 1:00-4:00) (3)
- 457 CLINIC PRACT SP & HRG(M 3:00) (3)
- 459 READ SP & HRG (TBA) (1-3)
- 471A STUTTERING SEMINAR (MW 1:00-2:30) (3)
- 471B SEMINAR (ARTICULATION) (MW 8:00-9:30) (3)



TECHNOLOGY

BUED (Business Education)

- 1 BEGINNING TYPE (M-F 1:00) (2)
- 2 INTER TYPE (M-F 10:00) (2)
- 3 ADV TYPE (MWF 2:00) (2)
- 112 INTRO TO DATA PROC(MWF 1:00) (3)
- 115 SHORTHAND (M-F 9:00) (3)
- 115 SHORTHAND (M-F 11:00) (3)
- 200 BUS TECH I MDSNG (M-F 11:00) (5)
- 200 BUS TECH I MDSNG (M-F 8:00) (5)
- 204 APPLIED TYPE(TBA) (2)
- 215 SECRETARIAL SCI II (M-F 10:00) (3)
- 219 COMMUNICATIONS (M 3:00-6:00) (3)
- 225 OFFICE PRACTICE (M-F 9:00) (5)
- 267 COORDINATION TECH(MWF 9:00) (3)
- 290A SUP WORK EXP (TBA) (3)
- 290B SUP WORK EXP (TBA) (3)
- 302 BUS TECH II SELLING (M 6:30-9:30) (3)
- 312 SECRETARIAL PROCEDURES (MWF 2:00) (3)
- 323ME METH TYP ACCT BB (TTH 1:00-2:30) (3)
- 323MF METH DIST EDUC (TTH 3:00-4:30) (3)
- 385G IND STUDY DIST EDUC (TBA) (3)
- 386G IND STUDY BAS BUS (TBA) (3)
- 387G IND STUDY SEC SCIENCE (TBA) (3)
- 420d PROB BASIC BUS & ECON (M 6:30-9:30) (3)



ID NUMBER	STUDENT NAME	CL DEPT	DEGREE	MAJOR	VERB	MATH	NTL				
LOCAL ADDRESS:											
IMPORTANT: DO NOT LIST AUDITS OR DEFICIENCY COURSES WITH COURSES YOU LIST BELOW: SPACE FOR THESE COURSES ARE ON REVERSE SIDE OF THIS CARD											
COURSE	NUMBER	CR. HRS.	TIME	DAYS	PLACE	COURSE	NUMBER	CR. HRS.	TIME	DAYS	PLACE
1						ALTERNATE	1				
2						COURSES	2				
3						MUST	3				
4						BE	4				
5						LISTED	5				
6						OPPOSITE	6				
7						REGULAR	7				
8						COURSES	8				
9							9				
10							10				

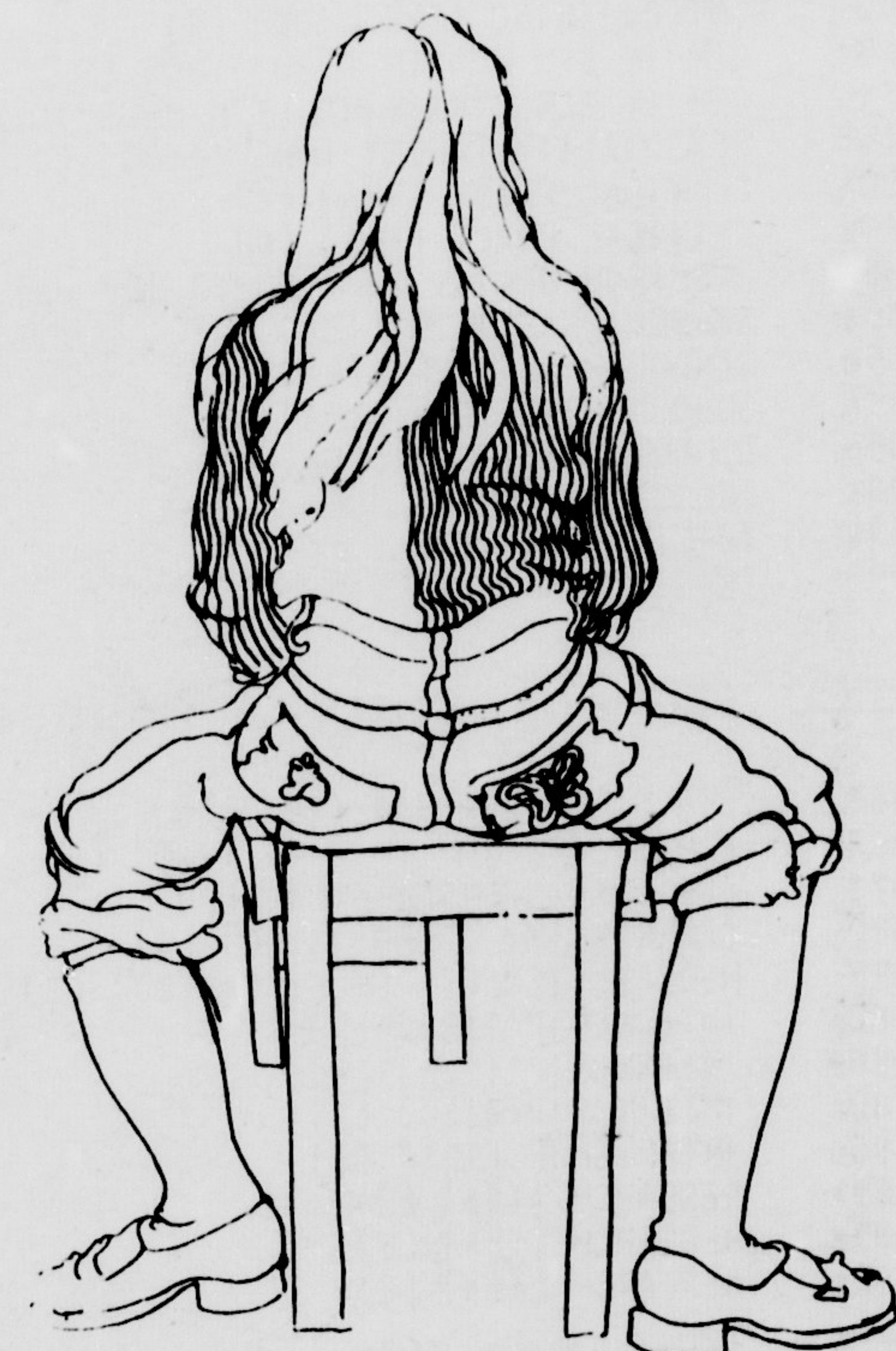
LIST ONLY AUDIT COURSES BELOW						L.S. ONLY DEFICIENCY COURSES BELOW					
COURSE	NUMBER	CR. HRS.	TIME	DAYS	PLACE	COURSE	NUMBER	CR. HRS.	TIME	DAYS	PLACE
1						1					
2						2					
3						3					
4						4					
5						5					

THE ABOVE CURRICULUM IS CORRECT OR CORRECT AS ALTERED / AND THESE COURSES (PREREQUISITES SATISFIED) ARE ACCEPTABLE THEREIN.

APPROVED BY ADVISOR: \_\_\_\_\_ DEPT. \_\_\_\_\_

DATE \_\_\_\_\_ QUARTER \_\_\_\_\_

EXTRA HOUR APPROVAL \_\_\_\_\_ DEAN OF UNIVERSITY \_\_\_\_\_



The course quarter. The wish to. All u penalty ten cla date up will be session. Dur or cou depart cours and o conferr enrollm card on class d. Stu college School those s by the Dean o chairm the las.

Aft may ex final ex proced. All Provos in the Chanc enroll report studer.

# Drop-Add, changing with the times...

The East Carolina University Faculty Senate on February 20, 1973 adopted a new course drop procedure for undergraduates which will become effective with the fall quarter, 1973-74.

The following arrangements will be observed by undergraduate students who wish to drop courses.

### TWENTY DAYS

All undergraduate students may at their option drop a course or courses without penalty at any time up to and including the first twenty class days in the quarter or ten class days in the summer session, excluding Saturdays. The actual calendar date up to and including which undergraduates may drop courses at their discretion will be published and will become a part of the university quarter and summer session schedule.

During the prescribed period, undergraduate students who wish to drop a course or courses must observe the following procedure. Inform the appropriate departmental chairman, dean, or person whom they designate and discuss the course or courses they wish to drop. They must obtain a drop-add form, complete it and obtain a signature of the university official with whom they have conferred. They will next secure from the instructor or instructors the class enrollment card or cards. Both the drop-add form and required class enrollment card or cards must be taken by the student to the Registrar's Office within three class days.

### REPORTING

Students enrolled in the General College will report to the Dean of that college. Students who have declared majors in Nursing or in departments in the School of Allied Health and Social Professions must report to appropriate officers in those schools and departments. Students enrolled in courses or programs offered by the Division of Continuing Education will report to persons designated by the Dean of that division. All other undergraduates must report to their departmental chairman or dean, or person whom they may designate. During the 1973-74 session, the last calendar day on which students may exercise an option will be as follows:

Winter Quarter - January 10, 1974

Spring Quarter - April 1, 1974

After the date ending the quarter or summer session period in which students may exercise an option in dropping courses and to the date of the administration of final examinations in courses, all undergraduate student will observe the following procedure in order to drop a course or courses without penalty.

All students enrolled in the General College will report to the Office of the Provost. Students who have officially declared majors in Nursing or in departments in the School of Allied Health and Social Professions must report to the Vice Chancellor for Health Affairs or to persons whom he may designate. Students enrolled in courses or programs offered by the Division of Continuing Education will report to the Dean of that Division or persons whom he may designate. All other students will report to the Office of the Provost.

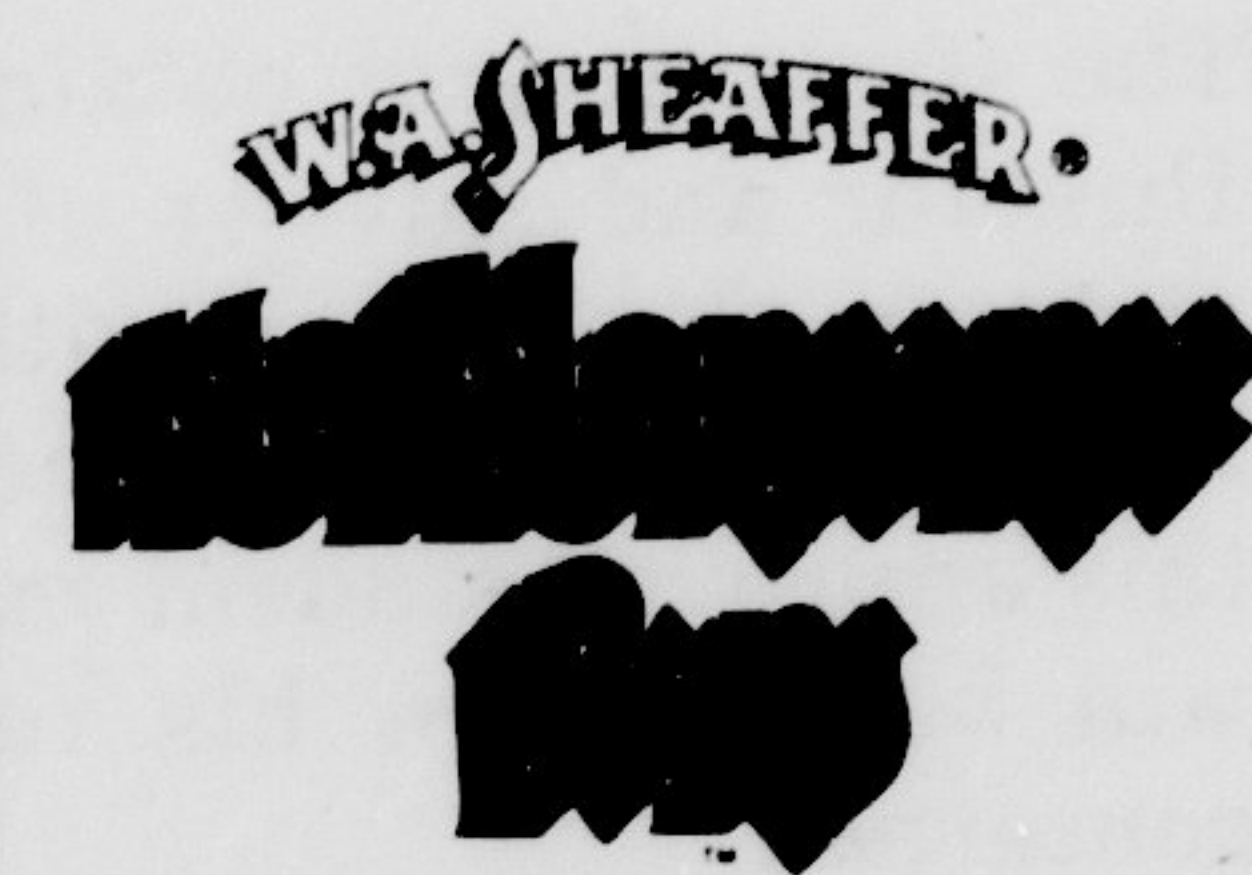
### URGENT

Students who petition to drop a course or courses without penalty during the prescribed period will be permitted to do so only for the most urgent and compelling reasons. It is, therefore, anticipated that relatively few student applications to drop courses will be granted. For those who do obtain such permission, the drop-add form and required class enrollment card must be taken by the student to the Registrar's Office within three class days.

### APPEAL TO COMMITTEE

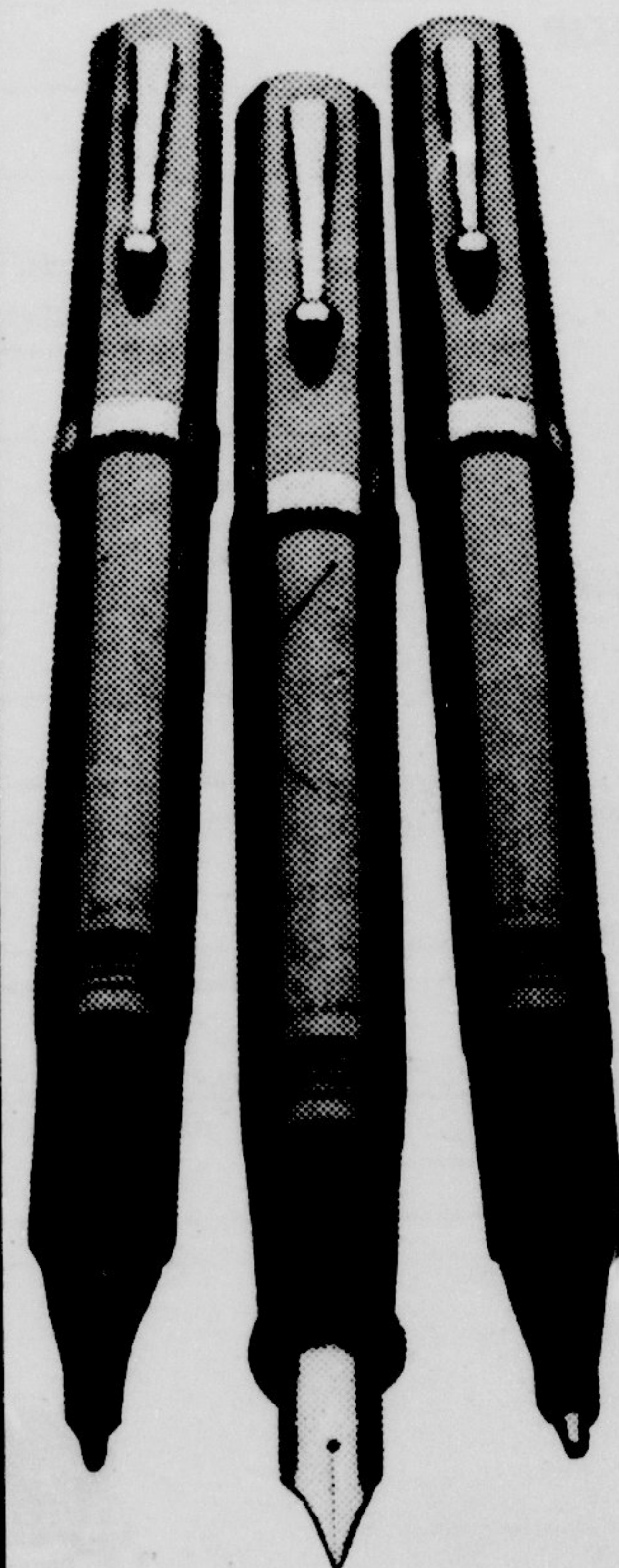
Students who are denied permission to drop a course or courses without penalty may appeal to a faculty committee of three members appointed by the Senate. If the appeal is granted, the drop-add form must be properly executed, and signed by the chairman of the committee. Class enrollment cards must be obtained from instructors. The drop-add forms and class enrollment cards must be taken by the student to the Registrar's Office within three class days.

## THE COMPLETE STUDENT



Simple, straight-forward, classic—out of step with today's throwaway culture. Refillable cartridge, ballpoint or fiber tip marker in basic tan or navy blue. \$1.98: not bad for a pen you may use the rest of your life.

\$1.98



SHEAFFER, WORLD-WIDE, A COMPANY

**KALKHOFF - GERMANY'S BEST**  
 27 x 1 1/4" MEN SPEED 27" FRAME - SIMPLEX DERAILLEUR  
 CENTER PULL BRAKES WITH SAFETY LEVERS  
 WEIGHT ONLY 30 LB. - RED, WHITE, YELLOW, ORANGE \$119.95

**WESTERN FLYER - 42 YEARS EXPERIENCE**

10 Speed Racer 27 x 1 1/4" (Men's)	\$97.95
10 Speed Ladies Tourister 27 x 1 1/4"	88.95
5 Speed Ladies & Men's 26 x 1 1/4"	78.95
3 Speed Ladies & Men's 26 x 1 1/4"	72.95
1 Speed English Ladies & Men's 26 x 1 1/4"	54.45
1 Speed American Ladies & Men's 26 x 1 1/4"	54.95
Bicycle Locks	\$1.69 to \$5.69
Bicycle Baskets	\$2.35 to \$7.35

CARRIER \$11.65 (for 2 bikes)

REAR Baby Seat Heavy duty \$10.29

**Bicycle accessories headquarters**

628 Dykingon Ave.  
 Greenville, N.C.

## Taking off? Take us up.

There's a place for you on Piedmont. For a weekend of fun, a game out of town, a quick trip home, whatever—there's a Piedmont jet or propjet flight to fit your plans. With personal, thoughtful service always. Piedmont—serving over 75 cities including Chicago, New York, Washington, Norfolk, Atlanta, Memphis. Call us, or your travel agent.

## Piedmont Airlines

Our twenty-fifth year of service.



### CHANGE OF MAJOR AND/OR MINOR COURSE OF STUDY

NAME \_\_\_\_\_ ID NUMBER \_\_\_\_\_  
Last First Middle or Maiden

FROM \_\_\_\_\_ Director's Approval \_\_\_\_\_ Adviser's Approval \_\_\_\_\_  
Dept. Degree

TO \_\_\_\_\_ Director's Approval \_\_\_\_\_ Adviser's Approval \_\_\_\_\_  
Dept. Degree

Major Course of Study \_\_\_\_\_ Minor Course of Study \_\_\_\_\_

Registrar

1. The student MUST HAVE THIS FORM COMPLETED AND MUST DELIVER IT to the Registrar's Office, Room 102 Whichard Building.
2. The student must obtain this form from the Office of the Departmental Director. If approved by the Director and Adviser of the Department in which he is presently enrolled, student will obtain his records and take them along with this form to the Department to which he wishes to transfer. The Director and Adviser will approve the change and student will be assigned a major and minor course of study. After this approval, student must take this form to the Registrar's Office, 102 Whichard Building where changes will be made on his records. The Registrar's Office will send a copy of this form to each department concerned.
3. A student who has been absent from the University a quarter or more must apply for readmission through the Office of Admissions.

Date \_\_\_\_\_

### DROP-ADD FORM East Carolina University

Date \_\_\_\_\_  
NOT VALID UNLESS DATED

PRINT \_\_\_\_\_ ID NUMBER \_\_\_\_\_  
Last Name First Name Middle

MAJOR DEPARTMENT \_\_\_\_\_ REASON FOR CHANGE \_\_\_\_\_

1. To be valid, this form must be dated and signed by adviser and signed by major dept. head.
2. Student must obtain from instructor a course card for each course being dropped.
3. Student must have copy of present schedule to drop-add.

	COURSE NAME AND NUMBER	SEC.	HOUR	DAYS	BLDG. AND ROOM	QTR. HR. VALUE
<b>DROP</b>						
<b>ADD</b>						

REGISTRAR'S OFFICE

Note: If student is raising a course, the raised course form must be attached.

Signed \_\_\_\_\_ Signed \_\_\_\_\_  
Faculty Adviser's Approval Major Department Head's Approval

Extra Hour Approval \_\_\_\_\_ No. of Hours Carrying After Change \_\_\_\_\_  
Departmental Chairman

