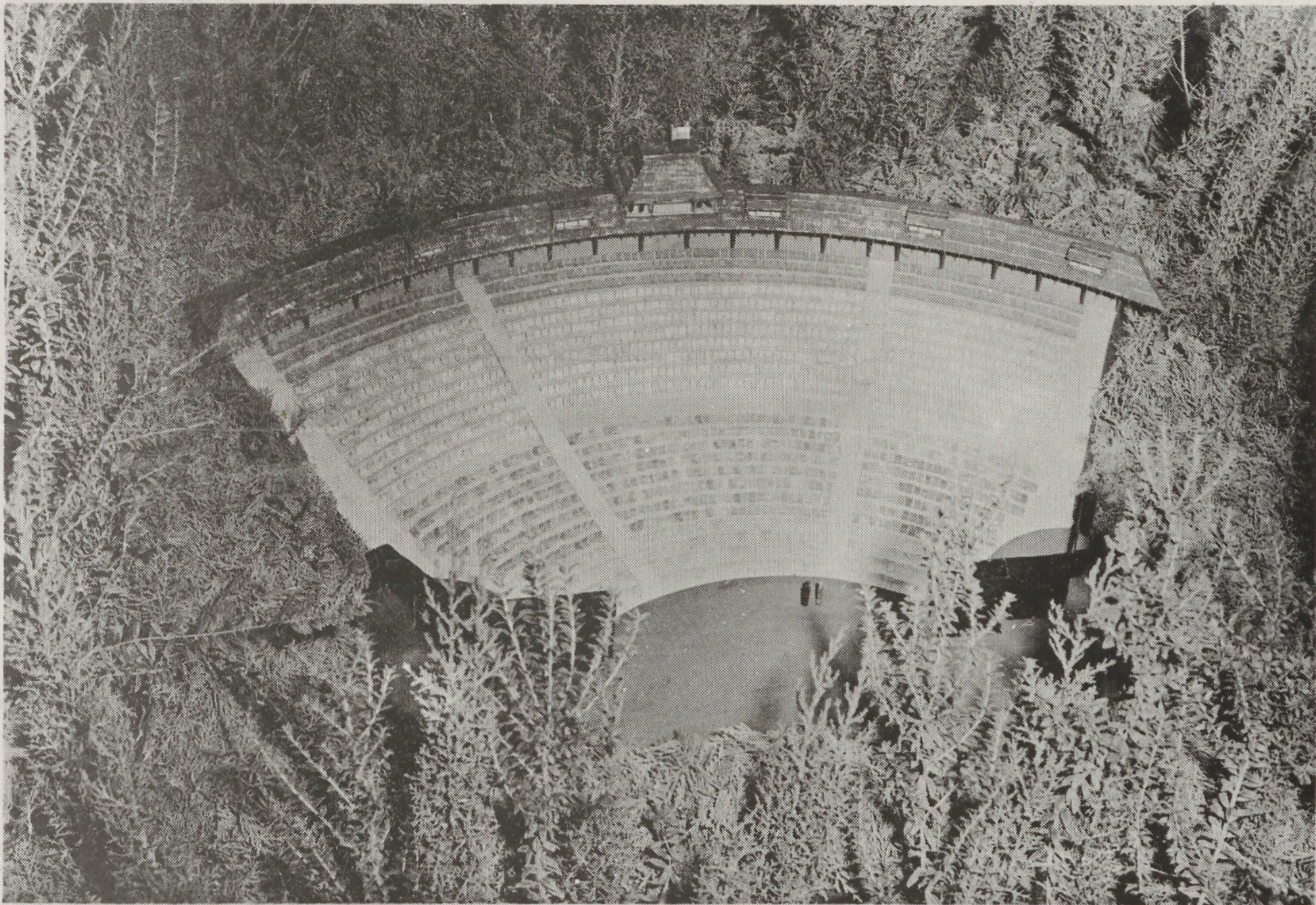


# THE EARLY TEXAS HERITAGE FOUNDATION

## MONUMENT HILL AMPHITHEATRE



Construction will begin on this 1,767-seat outdoor theatre immediately after the necessary \$350,000 has been raised for the theatre and for the development of historical drama. The architect's

rendering above has been superimposed over the actual theatre site, and it shows how the theatre will look when completed.

## First Steps in Preservation of Our Heritage

When The Early Texas Heritage campaign is over and funds have been raised, an attractive outdoor amphitheatre will rise within the contour of a 250-foot bluff, in the shadow of Monument Hill State Park. This beautiful setting will be the home of the historical drama where one of our country's greatest stories will be told---the epic drama of how Texas was carved out of a wilderness, and of the heroes who did it.

During a ten-week season each year, these epic dramas will unfold before our eyes and project the colorful era of a generation long since past. The drama, sponsored by The Early Texas Heritage Foundation, will be staged in an open air amphitheatre at the foot of this magnificent cliffside.

Music, pageantry and humor will be professionally combined for a striking drama---one that will launch an imaginative new industry for our area, as it delights the hearts of thousands each summer under a star-studded Texas sky.

As people from all over Texas and other states stop to see the historical drama at Monument Hill, they will often times be watching local talent. Speech and drama students from many Texas universities and colleges will have an opportunity to participate. In addition to the

epic dramas, the theatre may be used for many other non-profit civic and educational programs.

Paul Green, a Pulitzer Prize winning playwright, and a man dedicated to the preservation of history in our country, is interested in writing a script for this historical spectacular. This kind of "symphonic drama," as he calls it, has been his first love for thirty years.

His first such play, "The Lost Colony," launched in 1937, is still being produced today in Manteo, North Carolina. Mr. Green's production has been stirring the hearts of millions during the past twenty-nine years.

Historical dramas, when they are well written and have a high quality of performance, have the ability to attract large audiences to "unlikely" places, often miles from cities and even highways. Our area of Texas is most abundant in historical heritage and is already known throughout the state.

Historical drama represents a tremendous challenge for the citizens of the entire Central and Eastern Texas area. It represents the first step in a development of the area arts by The Early Texas Heritage Foundation. For all who take pride in the heritage of Texas' beginnings, it is a first step that should be welcomed and enthusiastically supported.