

# RUSSIA

## AN HISTORIC EVENT IN CHRISTIAN WITNESSING!!!

- A month of THE PROMISE performances in the PALACE OF CONGRESSES inside the Kremlin!
- Gospel performances before 100,000 Muscovites
- Preaching and witnessing through the Churches of Moscow
- Lay witnessing in schools, factories and businesses
- Concerts near Lenin's Tomb in Red Square.
- Distribution of over 250,000 Bibles, plus food, clothing and medicine
- Perform with THE PROMISE artists and Russian cast and help to establish the first Christian Drama Group in Moscow



### FOUR DEPARTURE DATES:

March 9  
March 16

March 23  
March 30

### ALL-INCLUSIVE PRICE:

\$2299 Atlanta, DFW

(Based on plane load  
from each city)

## RUSSIA MISSION SPECIAL . . .

**EARN "THE PROMISE" SCHOLARSHIP:** Personally enlist 20 people to join you on this trip and **THE PROMISE** will take you free!

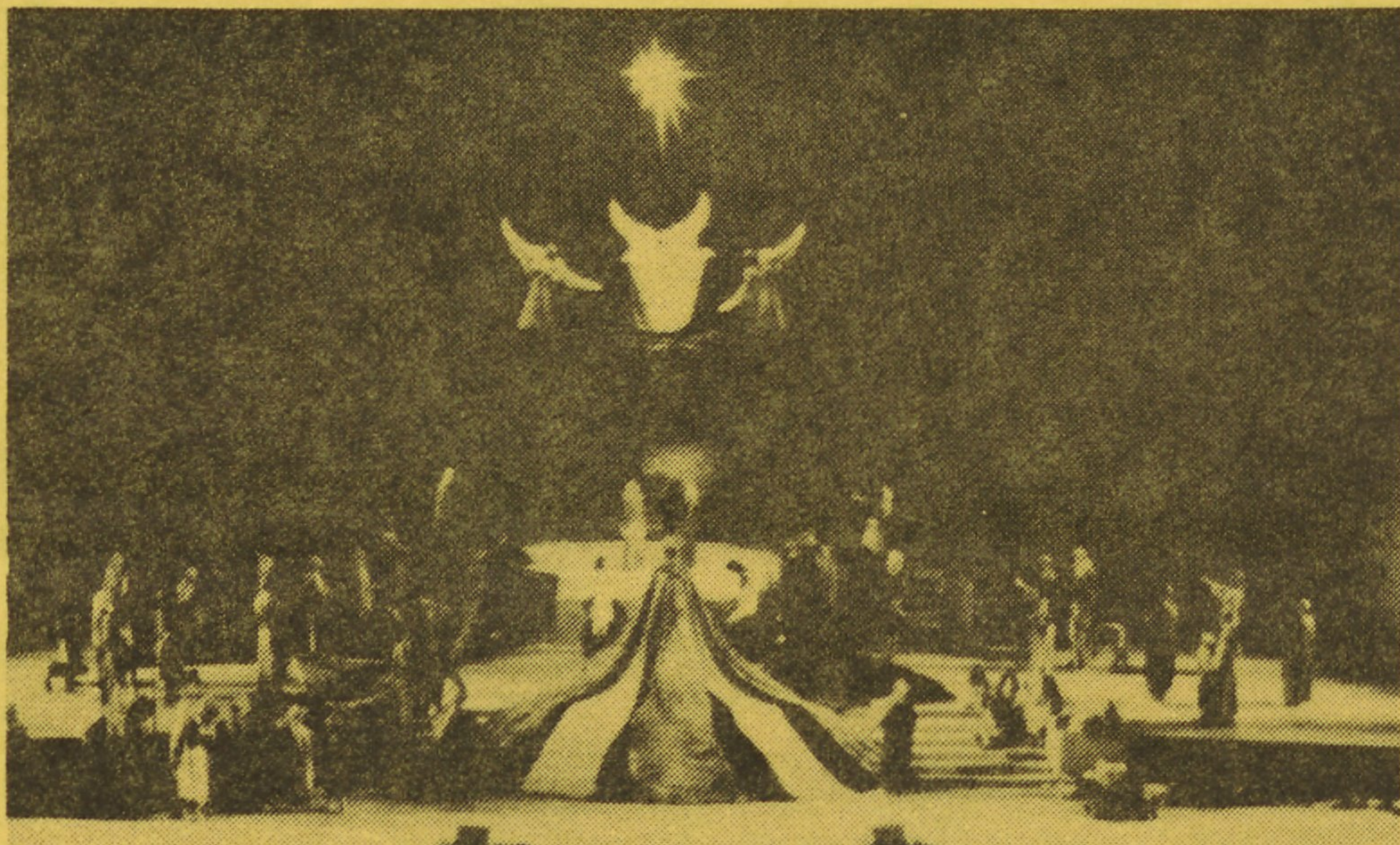
*Payment for this Mission trip is tax deductible.*

# THE PROMISE to RUSSIA

**Concept...** *an evangelistic and benevolence mission to Moscow by American churches introducing the Russian public to the Gospel through musical drama* .....

**Plan...** *combine Russian and American talent to produce the first musical drama on the life of Christ behind the Kremlin walls; distribute food, clothing and medical supplies in Moscow through Russian churches; conduct lay witnessing and preaching campaign; distribute Bibles and Christian literature* .....

**PROJECT ORGANIZATION.** The mission will be under the supervision of Promise Productions, Inc. and International Travel & Tour Consultants, Inc. (ITTC). Each participant will be sent by an American church as their representative in the mission **THE PROMISE** will be produced by Promise Productions, Inc., a Texas, nonprofit corporation dedicated to the presentation of the Gospel through drama. An Evangelism Team, headed by the Mission Evangelist, will coordinate the lay witnessing, counseling and Bible distribution and a Benevolence Team will insure that the food, clothing and medical supplies are delivered to the people who need them most.



**THE PROMISE** features a spectacular Nativity Scene.

**SPONSORING CHURCHES.** Local churches in Moscow will be selected to sponsor the events. Each American church participating in the **PROMISE TO RUSSIA** mission will become a partner with one or more sponsoring Russian churches to achieve the ministry goals.

**AREAS OF MINISTRY.** **PROMISE TO RUSSIA** will minister to the people of Russia through the presentation of *The Promise*, a live, two hour musical dramatic portrayal of the life and ministry of Jesus Christ at the Palace of Congresses in the Kremlin; distribution of Bibles and Christian literature in the streets, businesses and schools of Moscow; lay witnessing; participation in services at the sponsoring Russian churches; distribution of food to the hungry through the sponsoring churches; delivery of medical supplies and equipment to clinics and hospitals in Moscow; and the distribution of clothing and personal items to fellow Christians in Moscow.

**THE PROMISE** is a two hour, musical dramatic portrayal of the life, ministry, death, and resurrection of Jesus Christ that is performed every Friday and Saturday night at the \$4 million Texas Amphitheater in Glen Rose, Texas southwest of Dallas-Fort Worth. **THE PROMISE** is in its fourth season, having premiered in

November, 1989. The production features a cast of 90 actors, actresses, singers, and dancers, and a variety of animals including camels and horses to present a spectacular show in a state-of-the-art outdoor amphitheater. The marvelous story of the birth, life and ministry of our Lord comes alive on the stage as a Grandfather tells the ageless story to his grandchildren.



Project participants will share the love of Christ with the Russian people.

**THE PALACE OF CONGRESSES.** **THE PROMISE** will be performed in Russian on Friday, Saturday and Sunday during the weeks of March 9-30, 1993 at the Palace of Congresses in the Kremlin, the largest theater in Moscow with a seating capacity of 6,500. The cast will consist of both Americans and Russians, joining together for the first time to present the Gospel in the very hall where Lenin was once worshipped and idolized and Christianity was ridiculed as the "opiate of the masses." Where the huge portrait of Lenin once hung, the cross of Christ will now be displayed.

**WHO MAY PARTICIPATE.** Reservations for this historic mission to Russia are open to all Christians who wish to help show the love of Christ to Russia in this unique way. Limited space requires that reservations be taken on a space available, first come, first served basis. The variety of activities featured in the mission plan presents an opportunity for all who can to be a blessing to many thousands of needy, soul starved Russians. Auditions for actors, actresses, singers, and dancers will be conducted in the Fall of 1992 in the Departure Cities. Others wishing to go, but not auditioning for one of the 300 roles in the cast may participate as stage hands or counsellors or may assist in the distribution of food and clothing, gaining first hand experience with the desperate situation in Moscow.



Crucifixion Scene from **THE PROMISE**

**PROJECT OBJECTIVES.** Your participation in this mission will help accomplish the following objectives: (a) present the Gospel through musical drama, preaching, witnessing and literature distribution; (b) produce a two hour film of the production to be shown on Russian television to over 100 million people; (c) establish a Christian drama group in Moscow to continue the work begun by this mission; and (d) strengthen the work of the Russian church.

**OTHER RUSSIAN MISSION TRIPS COST \$2500 UP FROM NEW YORK ...  
With Promise Productions Inc., Your Entire All-Inclusive 11-Day Trip is Just \$2299!  
ROUND-TRIP ATLANTA or DFW!**

(Based on full plane load from each city)

**OUR MOSCOW SCHEDULE**

- Tue. — FLY USA/MOSCOW
- Wed. — ARRIVAL INTO MOSCOW/RELAXATION
- Thr. — SIGHTSEEING/ORIENTATION/REHEARSAL
- Fri. — WITNESSING/PLAY PERFORMANCE
- Sat. — WITNESSING/PLAY PERFORMANCE
- Sun. — CRUSADE IN CHURCHES/CONCERTS/PLAY PERFORMANCE
- Mon. — WITNESSING/SCHOOLS/BUSINESSES
- Tue. — WITNESSING/SCHOOLS/BUSINESSES
- Wed. — WITNESSING/SCHOOLS/BUSINESSES
- Thr. — FAREWELL ACTIVITIES
- Fri. — FLY MOSCOW/USA

11 EXHILARATING DAYS OF SPIRITUAL EXCITEMENT! One low price includes:

- Round-trip economy airfare
- First Class hotel, double-occupancy, private facilities
- 3 meals a day
- Transfer between airport and hotel
- Sightseeing in Moscow and suburbs
- Porterage of luggage
- Special Russian Cultural Performances
- Part of THE PROMISE cast

**UNDERLYING ASSUMPTIONS**

The great success of the Partnership Missions movement over the years has been due in no small measure to some bedrock assumptions. Though always assumed they have not always been expressed. To promote continuing cooperative excellence, we state them here. It is assumed:

- Your **primary** reason for participation is ministry. It is understood that other worthy, though lesser objectives, such as recreation, education, or socialization will be subjected to the highest goal of ministry.
- You understand and accept that travel arrangement decisions are made with **primary** consideration for the group as a whole. It is expected that you are willing to make the requisite compromises that traveling with a large group inevitably implies.
- You recognize that, should you select to deviate from the group itinerary, you are assuming a **much greater degree of personal responsibility**. FIT (foreign independent travel) arrangements, while available, forfeit personal supervision overseas on those segments outside of planned Partnership involvement. Some specific benefits such as airport/hotel transfers become your personal responsibility.

**DAILY PROGRAM** — All mission activities will take place each day from our hotel. Our missionaries and local church Pastors and leaders will direct our efforts. Volunteers will be grouped in teams of 3-4 people and have an interpreter assigned to them during their stay. Much of the work will be similar to taking a census along with personal evangelism opportunities. Every Christian with a witness to share can participate!

**THINGS YOU MUST COMPLETE**

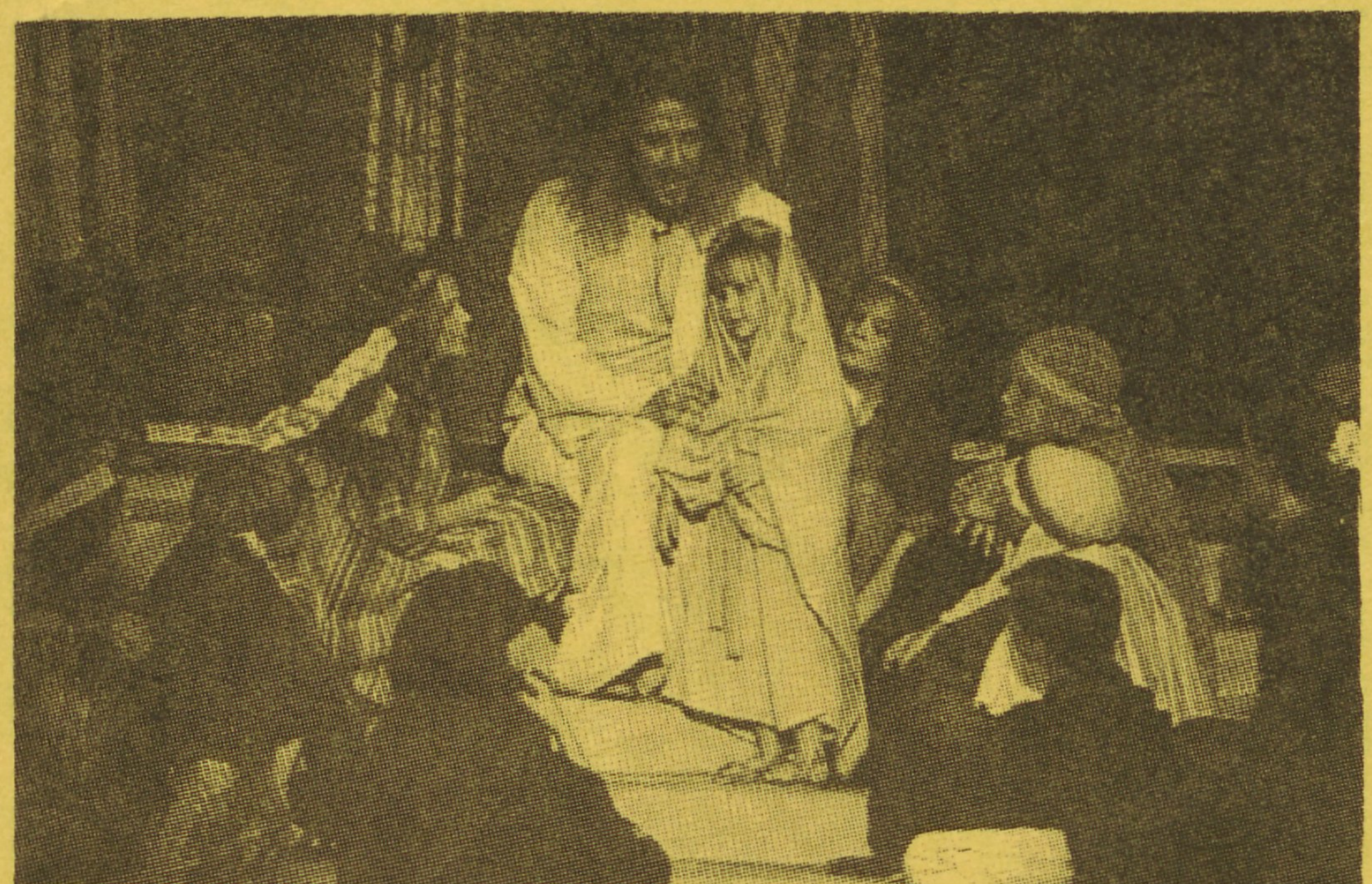
**SECURE A U.S. PASSPORT** — You can secure an application at your local post office or Federal building. If you have one be sure it is current, and has at least 6 months remaining before expiration from April 1993.

**SECURE AN ENTRY VISA** from The Russian Government. The trip coordinator will communicate with you on how and when to do this. You must have a valid U.S. Passport before the Visa can be acquired.

**COMPLETE AND SIGN THE RESERVATION FORM** on this Brochure and mail it to:

The Promise Productions, Inc.  
114 N.E. Barnard St., P.O. Box 927  
Glen Rose, TX 76043  
(817) 897-4341

**“THE PROMISE”**



## PAYMENT SCHEDULE

SEPTEMBER 1 - \$100 non-refundable deposit  
 OCTOBER 1 - additional \$250 deposit  
 NOVEMBER 1 - additional \$250 deposit  
 DECEMBER 1 - additional \$250 deposit  
 JANUARY 1 - additional \$250 deposit  
 FEBRUARY 1 - BALANCE IS DUE

It is imperative that the payment in full date be observed since airline tickets must be written at that time.

## CANCELLATION FEES

In order to provide you the finest travel program at the lowest possible cost, we have gone to non-refundable fares. Insurance helps protect you from last minute emergencies and cancellation expenses. To cover air, hotel and land cost, the following cancellation schedule will apply:

7 Mos prior to departure = \$200 fee  
 6 Mos prior to departure = 10% trip cost  
 5 Mos prior to departure = 20% trip cost  
 4 Mos prior to departure = 30% trip cost  
 3 Mos prior to departure = 40% trip cost  
 2 Mos prior to departure = 50% trip cost  
 1 Mo prior to departure = 75% trip cost  
 Date of departure = No refund!

Cancellation will result in the forfeiture of all deposits made to the date of cancellation, not to exceed an amount equal to the cumulative amount of the scheduled deposits.

For just \$89 you can ensure against most cancellation fees. If you want this protection, check box on reservation form. (A sample copy will be on display at your church.)

## RESERVATION FORM

(To be completed by each participant)

Departure Date \_\_\_\_\_ My Departure City \_\_\_\_\_

Name \_\_\_\_\_

Address \_\_\_\_\_

City & State \_\_\_\_\_ Zip \_\_\_\_\_

Tel. No. ( ) \_\_\_\_\_ Passport No. \_\_\_\_\_

Sex \_\_\_\_\_ Smoker: Yes \_\_\_\_\_ No \_\_\_\_\_

Group Leader and/or Church \_\_\_\_\_

My Roommate Is: \_\_\_\_\_

Basic Trip Cost from My City Is ..... \$ \_\_\_\_\_

TOTAL DUE ..... \$ \_\_\_\_\_

Less Deposit ..... \$ \_\_\_\_\_

BALANCE ..... \$ \_\_\_\_\_

MAKE CHECKS PAYABLE TO: THE PROMISE PRODUCTIONS, INC.

I have read the Tour Conditions section of the brochure and understand the cancellation policy and that payment in full is due February 1. I also understand that I am responsible for adequate medical, accident, baggage, cancellation and personal injury insurance. I will secure this coverage myself and hold Int'l Travel & Tour Consultants, Inc. harmless from any suit.

SIGNATURE \_\_\_\_\_

I want Cancellation/Luggage Insurance.

I do not want Cancellation/Luggage Insurance.

## TOUR CONDITIONS INCLUDED IN BASIC PRICE

1. AIR TRANSPORTATION: Economy class jet by IATA carrier, using the Non-Refundable APEX fare. NOTE: All airfares and conditions thereof are those in effect June 1, 1992 and are subject to change.
2. HOTELS: First class (government classification) with two persons sharing a twin bedded room with a private bath or shower.
3. MEALS: 3 meals a day throughout, consisting of continental breakfast and table d'hote dinner at normal meal times.
4. SIGHTSEEING: City tour of Moscow.
5. TRANSFERS: From airports to hotels, and vice versa, by motorcoach, including portorage of one standard size suitcase at all airports and hotels.
6. TRANSPORTATION IN PRIVATE MOTOR COACHES

## NOT INCLUDED IN BASIC TOUR PRICE

Visa and Passport fees, beverages customarily not included with continental table d'hote meals, laundry, dry cleaning, all items of purely personal nature, tips to hotel dining room staff and gratuities to escort and driver. Trip cancellation insurance \$89.

**BAGGAGE:** The tour includes the handling of one suitcase per person. The bag may not exceed 62 inches of total combined linear dimension (width plus length plus depth). Flights originating outside the United States may also limit weight of luggage carried free to 44 pounds. A carry-on bag of 45 inches is allowed in the cabin must fit under the seat in front of you. Every care will be taken by our representative to ensure that your luggage is protected, but Int'l Travel & Tour Consultants and/or the tour operator accept no responsibility for loss or damage to baggage or belongings. Baggage insurance is recommended and is furnished with cancellation coverage.

## RESPONSIBILITY

Int'l. Travel & Tour Consultants, Inc., and/or its agents acts only as agent for the passenger and for the various companies over the lines of which tickets are available and these tours operate, and assumes no responsibility for liability in connection which may be used wholly or in part in the performance of its duty to the passenger, neither will it be responsible for any act, error or omission, or for any injury, sickness, loss, accident, quarantine, strike, political unrest, riots, acts of God, and terrorism, delay and irregularity which may be occasioned by reason of any defect in any vehicle or through neglect or default of any hotel proprietor or hotel service, or for any other person engaged in carrying out the purpose for which tickets or coupons are issued. In the event it becomes necessary or advisable for the comfort or well-being of the passengers for any reason whatsoever to alter the itinerary or arrangements, such alterations may be made without penalty to the operators. Additional expenses, if any, shall be borne by the passenger, conversely, refund will be made to the passenger if any savings is effected thereby. The right is reserved to withdraw any or all tours should conditions warrant, also to decline to accept or retain any passengers as members of the tour. In such instances, full or equitable amount will be refunded. The right is reserved to substitute hotels of similar category for those indicated and to make any changes in the itinerary where deemed necessary or caused by changes in air schedules. The right is reserved to cancel any tour prior to departure, in which case, full refund will constitute full settlement to the passenger. No refund will be made for any unused portion of the tour unless arrangements are made in sufficient time to avoid penalties. Baggage is at owner's risk entirely. The issuance and acceptance of voucher or ticket shall be deemed to be consent to the above conditions. The airlines concerned are not to be held responsible for any act, omission or event during the time the passengers are not on board their planes or conveyances. The passage contract in use by the airline concerned, when issued, shall constitute the sole contract between the airlines and the purchaser of these tours and/or passenger. The services of any International Air Transport Association carrier may be used for these tours, and transportation within the United States may be provided by any member carrier of the Air Traffic Conference of America. Payment of deposit for this tour signifies full understanding and acceptance of the above-mentioned conditions.

6-7-92

MEDICAL INSURANCE COVERAGE IS MANDATORY AS ESTABLISHED BY THE FOREIGN MISSION BOARD TO PARTICIPATE IN THIS PROJECT. The cost is \$30 per person. Please forward your check for this coverage when you make your next trip payment.