

SUMMER SEASON-1962

Black Hills **Passion Play**



Featuring
**JOSEF
MEIER**

*World
Famous
Christus
Portrayer*

SPEARFISH, SOUTH DAKOTA

OPENING PERFORMANCE, SUNDAY, JUNE 10, 1962

EVERY SUNDAY, TUESDAY, THURSDAY AT 8:00 P.M.

FINAL PERFORMANCE, SUNDAY SEPTEMBER 2, 1962

For information and Reservation, write to
BLACK HILLS PASSION PLAY OFFICE

Spearfish, South Dakota, or Telephone Dial 642-2646



The Last Supper

Praised by Press • Acclaimed by Clergy • Endorsed by Educators • Lauded by Laymen

"Black Hills Passion Play, a modern miracle."
Robert Casey, Chicago Daily News

"Josef Meier as the Christus moves gently through the many brilliant episodes with grace and spiritual appeal."

Charles Collins, Chicago Tribune

"Enthralled audiences held spellbound by Black Hills Passion Players."

Harry Martin, The Commercial Appeal, Memphis

"Mr. Meier achieves commanding power in the greatest and most difficult role an actor can undertake."

C. S., Times-Picayune, New Orleans, La.

"The solid success of the Black Hills Passion Play makes it appear that the United States has acquired its own Oberammergau."

Time Magazine

"Black Hills Passion Play is certainly to be highly commended for the stirring of the emotions truly religious and salutary."

J. D. Rumel, Archbishop of New Orleans, New Orleans, La.

"Under skillful lighting, the skillful drama unfolded on the two-block long set."

News Week Magazine

"The most impressive play of this or any other season."

Linton Martin, Philadelphia Inquirer

"Audience hushed and intent in spell of Passion Play."

Harry Hobbs, Kansas City Star

"I am well acquainted with the success which this play has enjoyed and the very hearty response which has been given to it by Protestant Churches."

E. C. Fahnham, Executive Secretary Church Federation of Los Angeles, Calif.

"Magnificent in its concept, spiritually moving in its presentation, vibrant in color and sound is the Passion Play of the Black Hills."

Conrad Frederick Smith, The Charlotte Observer, Charlotte, N. C.

"The story of this dramatization of a miracle is almost a miracle in itself."

Paul Friggins, Readers Digest

"Memorably beautiful are the stage pictures enhanced by lighting effects that producers of opera and commercial dramas might profitably study."

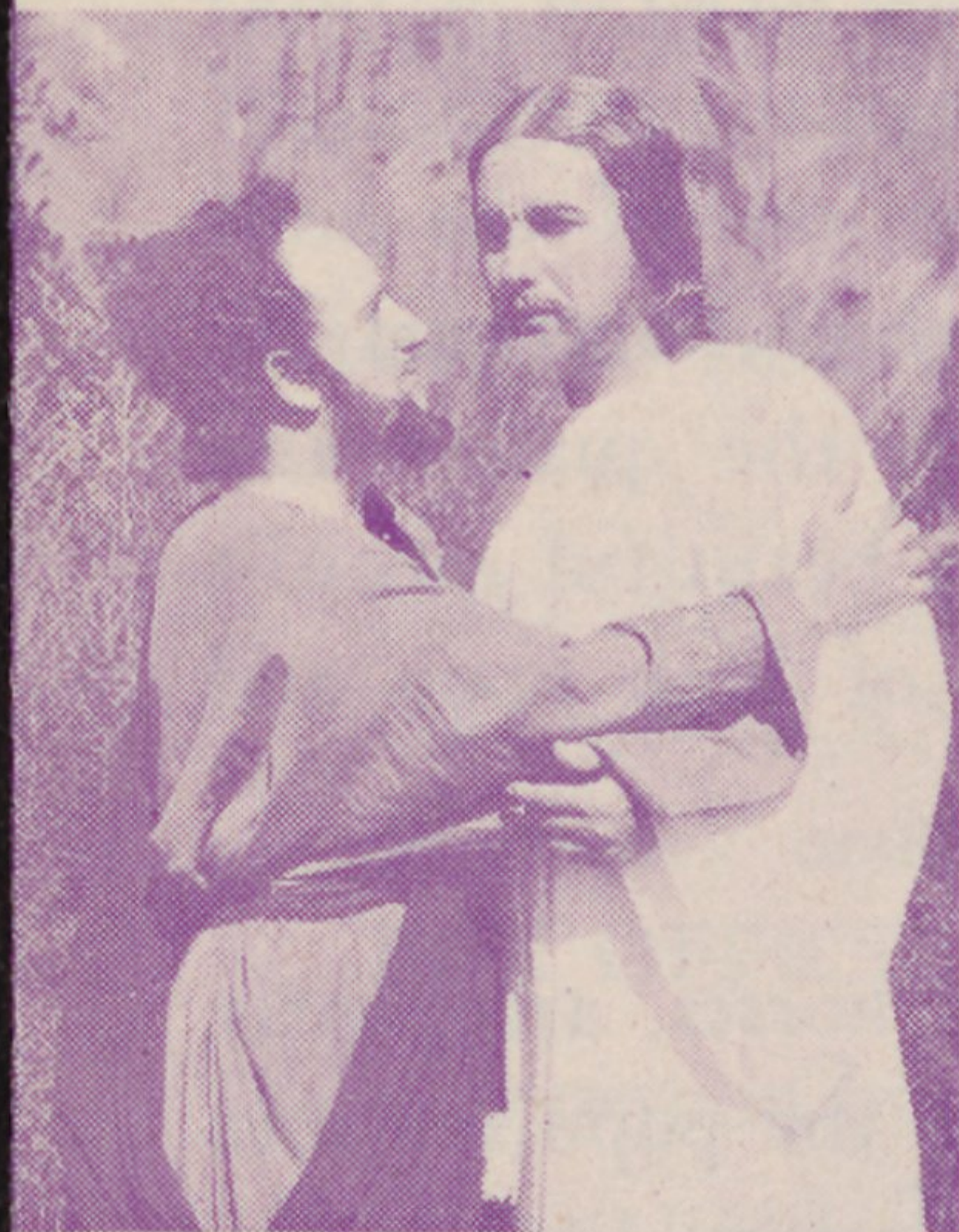
Los Angeles Examiner

"The version used in this play has been done so artistically and effectively that whether one is a Roman Catholic, a Protestant or a Jew, no controversial aspect is presented."

Preston Bradley, The Peoples Church, Chicago.



THE BETHANY SCENE



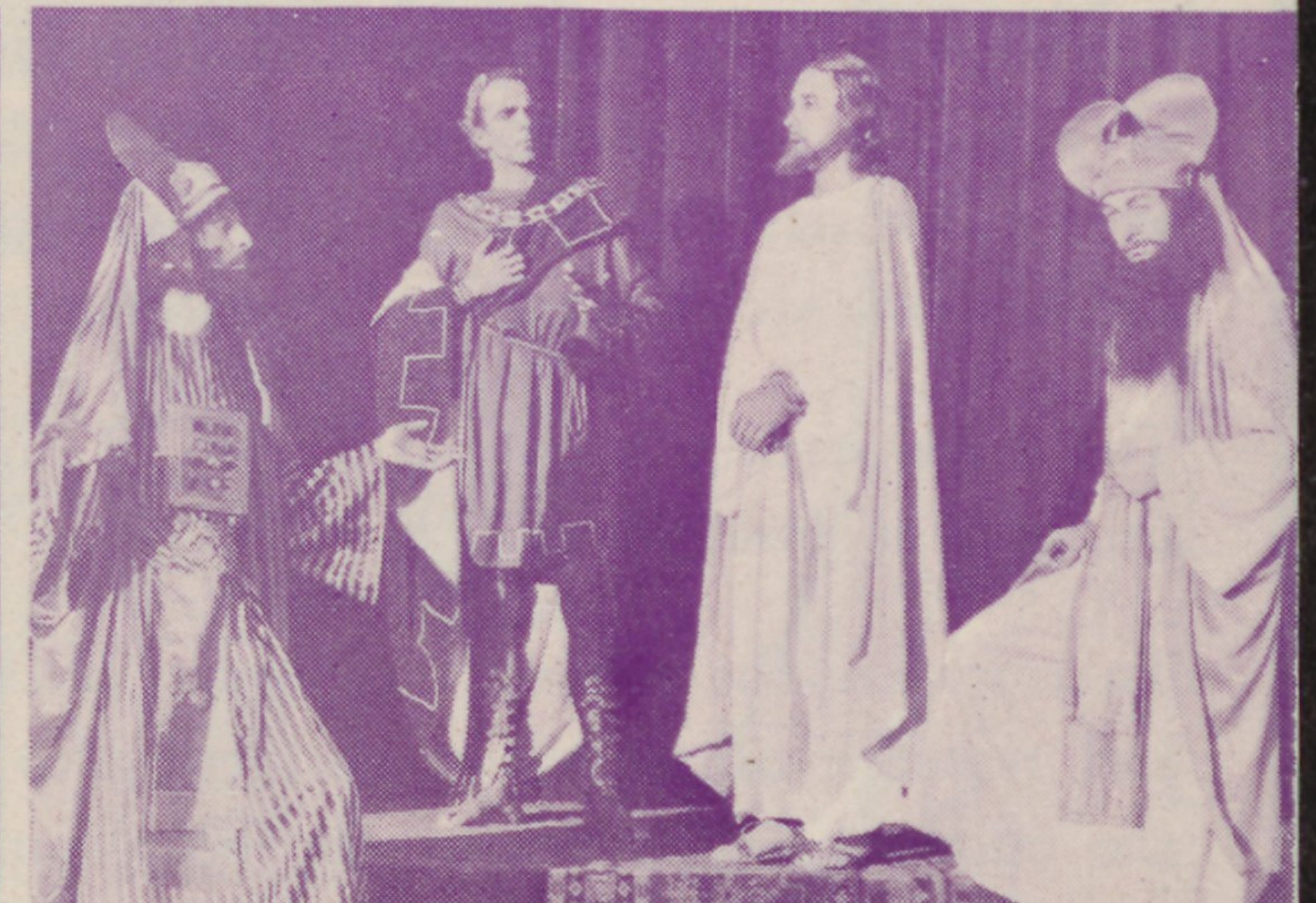
JUDAS KISS



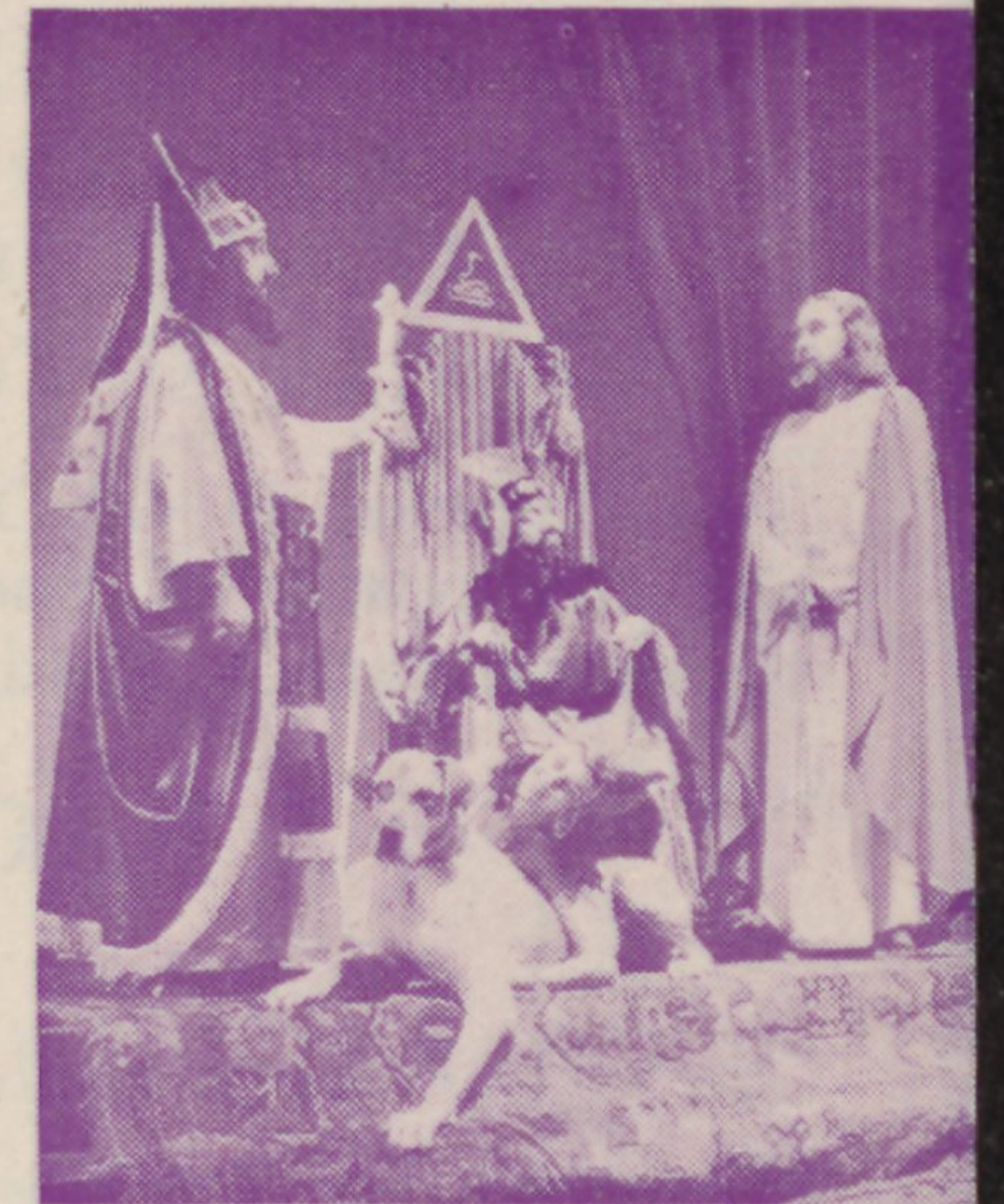
CHRIST BEFORE THE HIGH PRIEST COUNCIL



THE ASCENSION



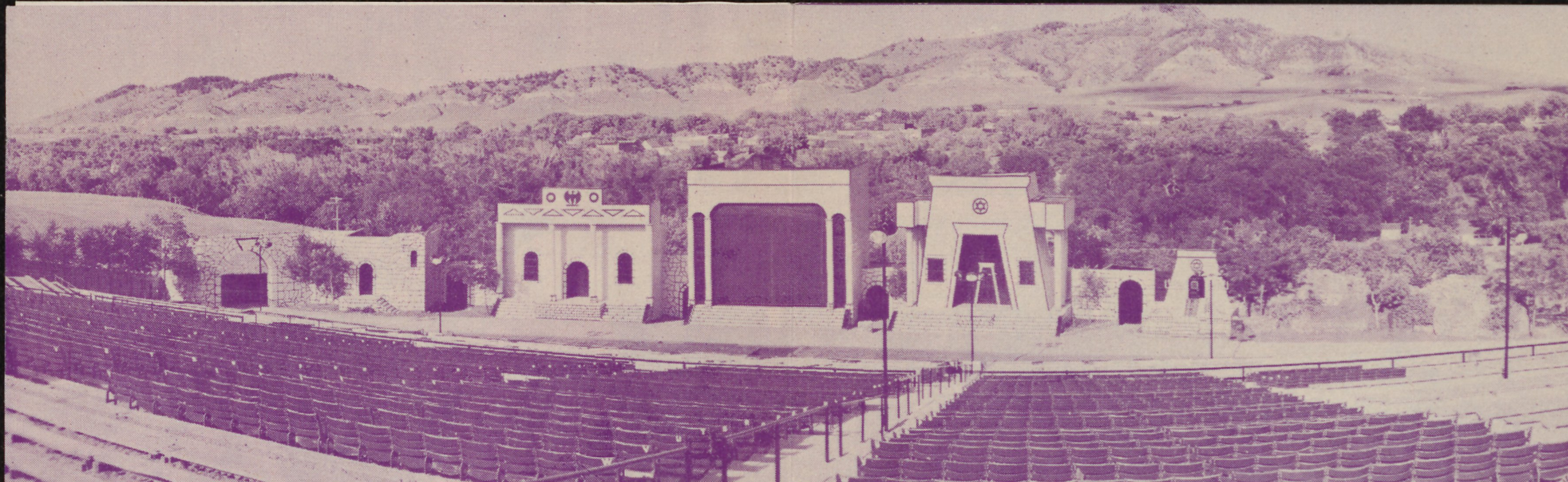
CHRIST BEFORE PILATE



COURT OF HEROD



DESCENT FROM CROSS



SUMMER HOME of the BLACK HILLS PASSION PLAY

Description of the stage viewed from left to right: THE CITY GATE; BETHANY, the home of Mary and Martha; PALACE OF THE ROMAN GOVERNOR, PILATE; CENTER STAGE (used for THE PROLOGUE—THE LAST SUPPER—COURT OF KING HEROD—THE SCOURGING—THE ASCENSION); THE TEMPLE; THE HIGH PRIEST COUNCIL, THE GARDEN OF GETHSEMANE; THE TOMB, THE ROAD TO GOLGATHA; MOUNT CALVARY.

The colorful LOOKOUT MOUNTAIN serves as a fitting background for the Stage. While the Theater is only a short walk from the city center of Spearfish, roads have been built to permit driving into the grounds where free parking space for more than one thousand cars is available.

FACTS CONCERNING THE BLACK HILLS PASSION PLAY

One of Europe's oldest productions, the Passion Play was presented for the first time on the American Stage in 1932 as the Luenen Passion Play. It became a permanent institution in the New World in 1939, when the company settled in the Black Hills of South Dakota. Here, the above Amphitheater was constructed and each year during the Summer Months the World's Greatest Tragedy is being re-enacted against a background of unparalleled beauty and realism. In 1952, a second Amphitheater was completed in Lake Wales, Florida, where the Play is presented each year during the Winter months.

Now widely acclaimed as the most outstanding production of its type, the Black Hills Passion Play reconstructs faithfully the dramatic events of the seven last days of the Life of Christ. Endowed with all the riches, splendor, and pageantry of the Orient, this great Play speaks eloquently of the love and fury of a people two thousand years ago; the Roman domination over Palestine; the devotion of the disciples and friends, and the supreme sacrifice of the Son of Man.

The stage setting is the realization of an ambitious dream on the part of Josef Meier.

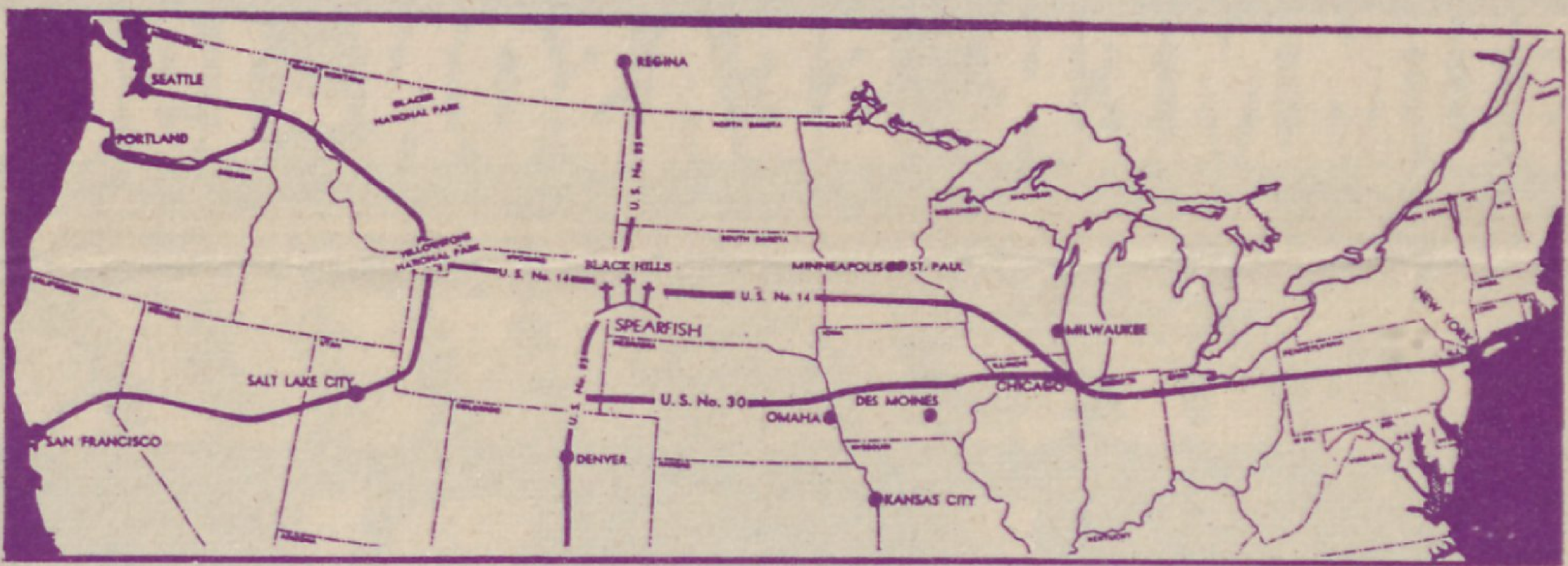
To translate the setting into reality called for years of study and research of all phases pertaining to the historic events—the customs and attire of the people involved, Palestine and

Roman architecture, Jewish Laws and those imposed on them by their Roman conquerors. His intimate knowledge of all phases of stagecraft enabled him to arrange the series of settings in a manner which allows a smooth and logical unfolding of the Play. Under his direction and supervision, one of the most flexible lighting systems was assembled, which, operated by remote control, illuminates each scene with the quality and quantity of light called for, ranging from a beautiful moonlit night to early dawn; into the bright glare of high noon and the multicolor effect of a Palestine sunset.

Roman soldiers, mounted on proud Arabian horses, arrogantly ride through the teeming city street, forcing the populace into the path of a passing camel caravan. Pigeons escape from cages, as merchants and moneylenders are driven from the Temple. Through all this, with simplicity and purpose, moves the central figure of the drama on a mission which leads HIM from public acclaim to public condemnation, from the weary road to Golgatha, to the peace of the dark Tomb, into the glory of the Ascension.

All parts of the mammoth stage are in full view of every seat in the large Amphitheater and perfect acoustics carry the lines of the actors to the last row and beyond.

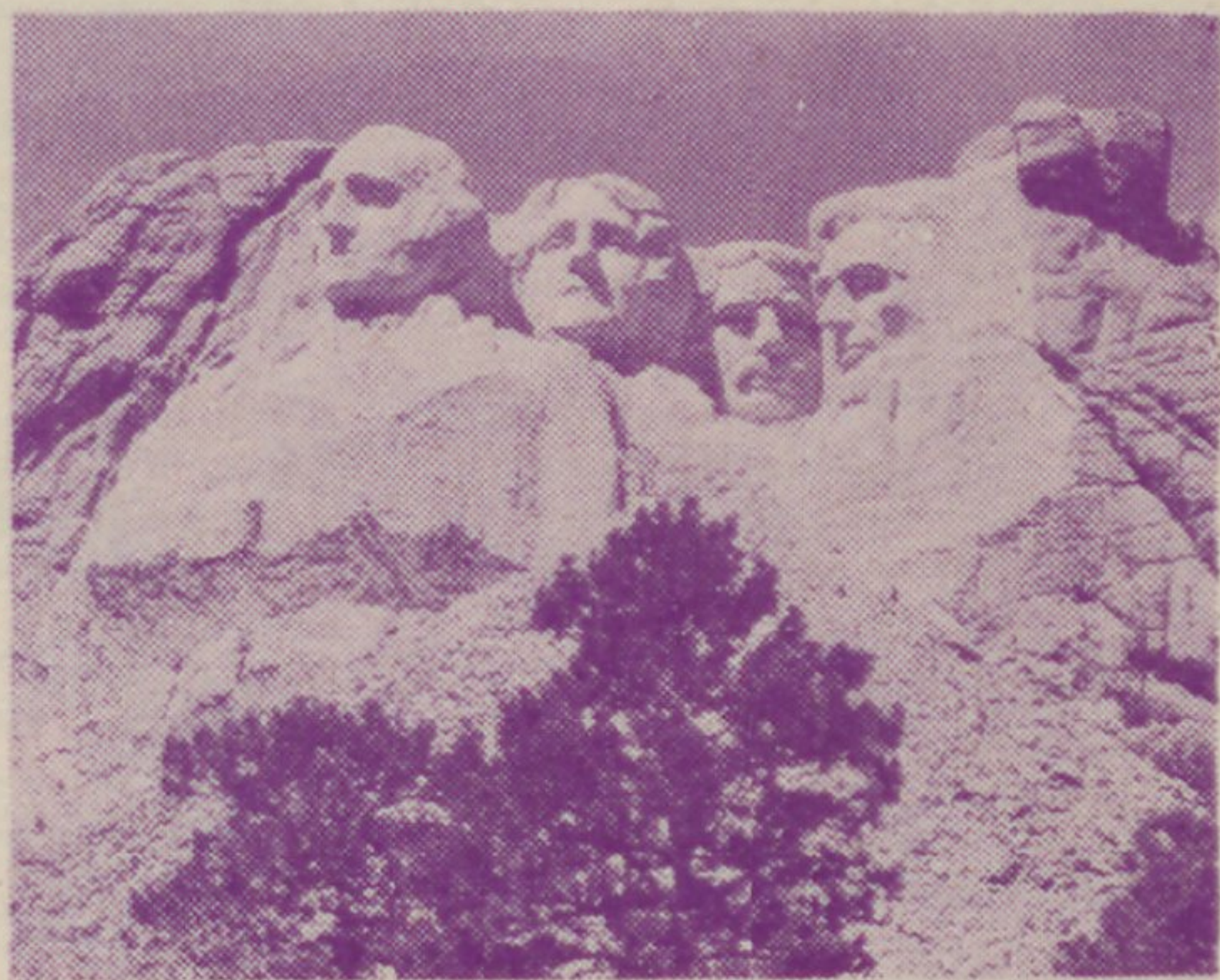
Note: Performance presented out-doors - wraps are advisable.



U.S. 14 or 385-85 provide good access to Spearfish, So. Dak. from all directions. Airline service into Rapid City, So. Dak. Railroad service into Newcastle, Wyoming. Both supplemented by bus service. Gray Line tours, Rapid City. Spearfish airport facilities for private planes.

SPEARFISH in the BLACK HILLS

BLACK HILLS . . . America's foremost vacation spot, is composed of beautiful pine-covered mountain ranges. Averaging a mile above sea level, it has the most delightful summer climate, particularly suited for out-door vacation life. Every turn in its wide, well-kept blacktop roads reveals new vistas of breath-



taking beauty. Famous SPEARFISH CANYON, with its rushing trout stream; RUSHMORE MEMORIAL, Gutzon Borglum's unsurpassed monument to Democracy; THE NEEDLES; SYLVAN LAKE; DEVIL'S TOWER, one of nature's wonders; THE BADLANDS, with their fantastic formations. Inhabited by people who know and practice Western Hospitality, visitors can enjoy fully the excellent trout fishing, horseback riding, mountain climbing and the yearly Rodeos.

ACCOMODATIONS

Ample accommodation is to be found in the many hotels, motor courts, and tourist homes. For room accommodation in Spearfish, write the SPEARFISH CHAMBER OF COMMERCE, Spearfish, South Dakota. Airlines and busses will bring you to the Hills safely and economically if you prefer not to drive.

Tickets for the Black Hills Passion Play Are No Problem

1. Make your reservation in advance by using the TICKET ORDER BLANK on opposite page and mail with check or money order to BLACK HILLS PASSION PLAY BOX OFFICE, Spearfish, South Dakota.
2. Reservation by Phone or Wire will be held at Main Box Office until 7 p.m. of date for which reservation is made. After 7 p.m. all uncalled for tickets will be returned for general sale.
3. Purchase tickets directly at the Amphitheater Box Office until curtain time.

IMPORTANT NOTICE

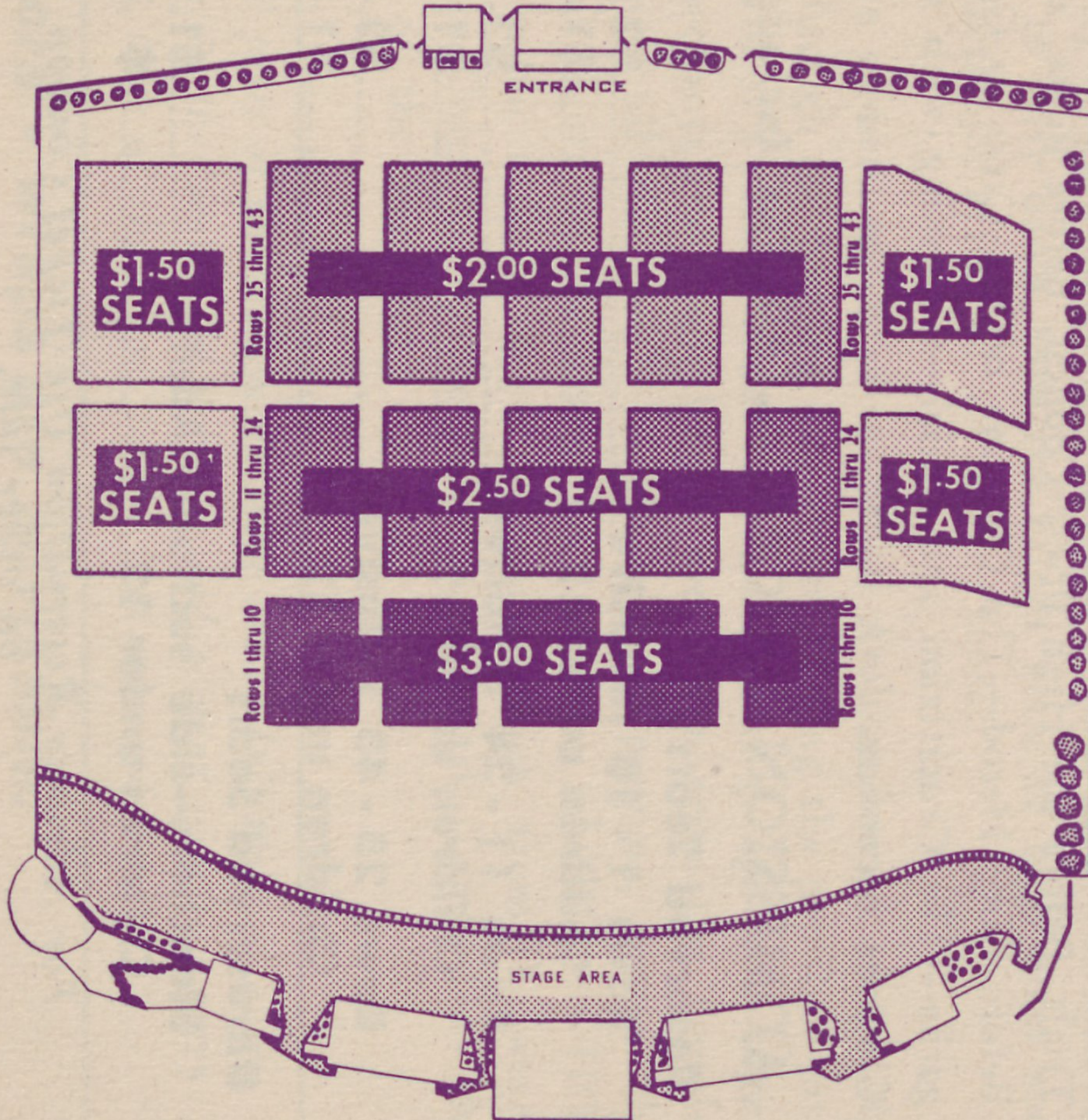
Allow ample time in which to mail your tickets. If too late to mail your tickets to you, we will confirm order and hold at Main Box Office. We cannot make refunds unless tickets are received at Box Office for cancellation prior to 5 p.m. on performance date.

BLACK HILLS
PASSION PLAY

Amphitheatre

SPEARFISH,
SOUTH DAKOTA

ORDER FOR TICKET RESERVATIONS



World's Largest Stage Production

Do Not Use This
Space

BLACK HILLS PASSION PLAY of America
Spearfish, South Dakota

Gentlemen:

No. _____

Enclosed M. O. or Cheque in amount of \$ _____

Received
Cheque, M.O. \$ _____

to cover cost of _____ at \$ _____
(No. of Tickets) (Each)

Performance wanted (Date) _____, 1962

Assigned _____

Preferred location _____

NAME _____

ADDRESS _____

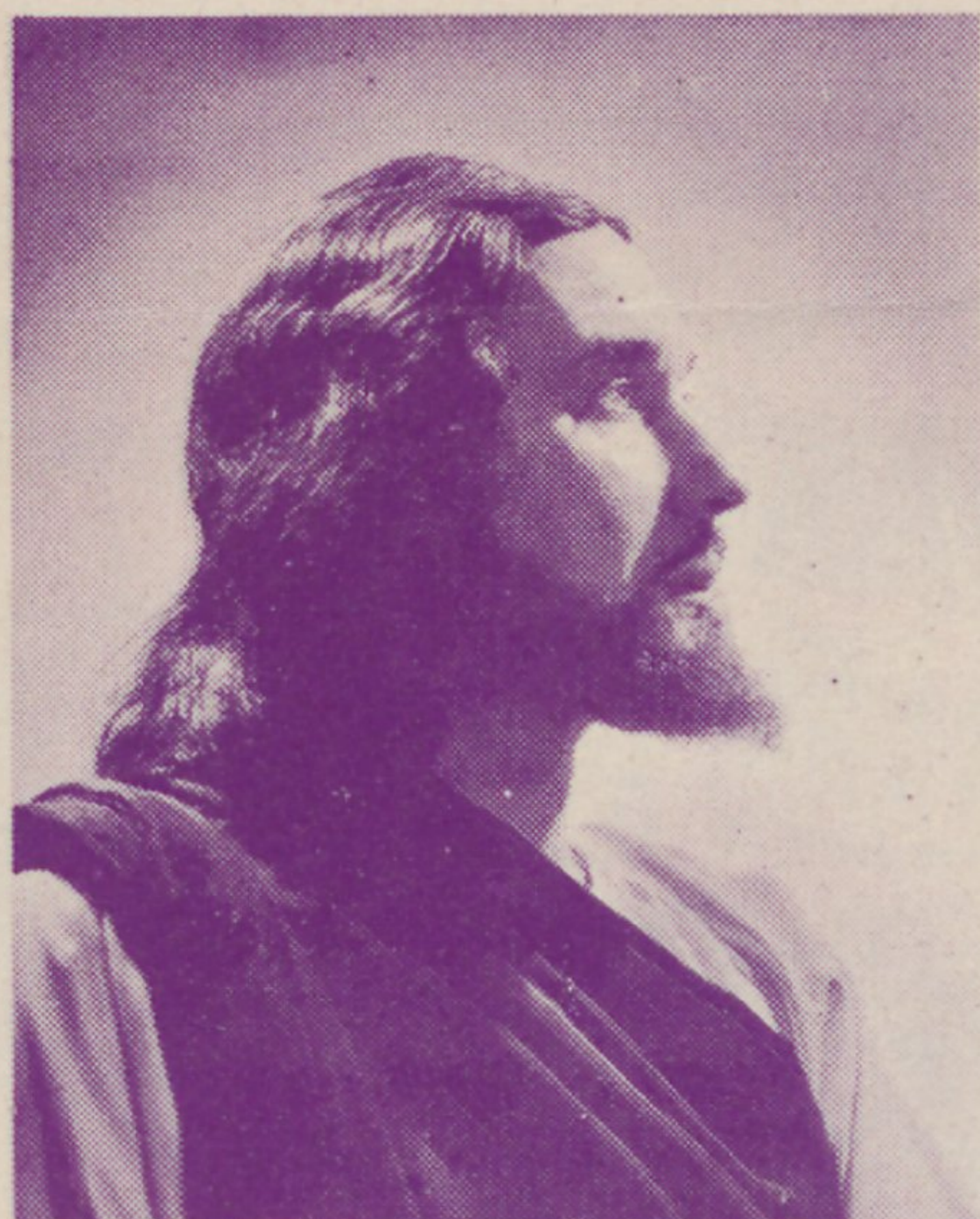
CITY _____ STATE _____

"NOTE: PERFORMANCE PRESENTED OUT-DOORS — WRAPS ARE ADVISABLE."

IMPORTANT NOTICE:

Enclose self-addressed stamped envelope if you wish your tickets mailed. Otherwise, if paid for, they will be held for you at Box Office.

Make Check or Money Order Payable to Black Hills Passion Play Company.



Josef Meier

portrayer of the Christus, is proclaimed by critics here and abroad as the outstanding interpreter of this most difficult role. The verdict is "Masterful" when they write about his performance in the Black Hills Passion Play.

Born in Luenen, Germany, he became a citizen of the United States in 1938. Following many years of study and preparation he assumed the principal role in the production and has since given more than five thousand performances. The most sincere tribute that can be paid him is that his auditors are no longer spectators of a play but are conscious of being present at the actual happenings of the historic events.

Josef Meier is ably supported by a carefully selected cast. All principals of the production are professional members of the American Stage who have a record of many years of association with the Black Hills Passion Play. The entire ensemble consists of 250 players.

※ ※ ※ ※ ※ ※ ※ ※ ※ ※

Highlights of the Twenty-two Scenes

of the Black Hills Passion Play are: The Triumphal Entry into Jerusalem — The Farewell at Bethany — The Last Supper—The Prayer in the Garden of Gethsemane—The Trials, Before the High Priest Council, Before Pilate, and Before King Herod—The Carrying of the Cross to Golgatha—The Crucifixion and Burial—Climaxing with the Glorious Ascension.

ADMISSION PRICES —(All Tax Included)

Reserved Seats

Rows 1 - 10 inclusive	\$3.00
Children under 12	\$1.50
Rows 11 - 24 inclusive	\$2.50
Children under 12	\$1.25
Rows 25 - 43 inclusive	\$2.00
Children under 12	\$1.00

Unreserved Seats

Bleachers—side sections, Adults	\$1.50
Children under 12	\$.75

*For Advance Reservation Use Ticket Coupon
on other side.*