

Final
Columbian
Institution



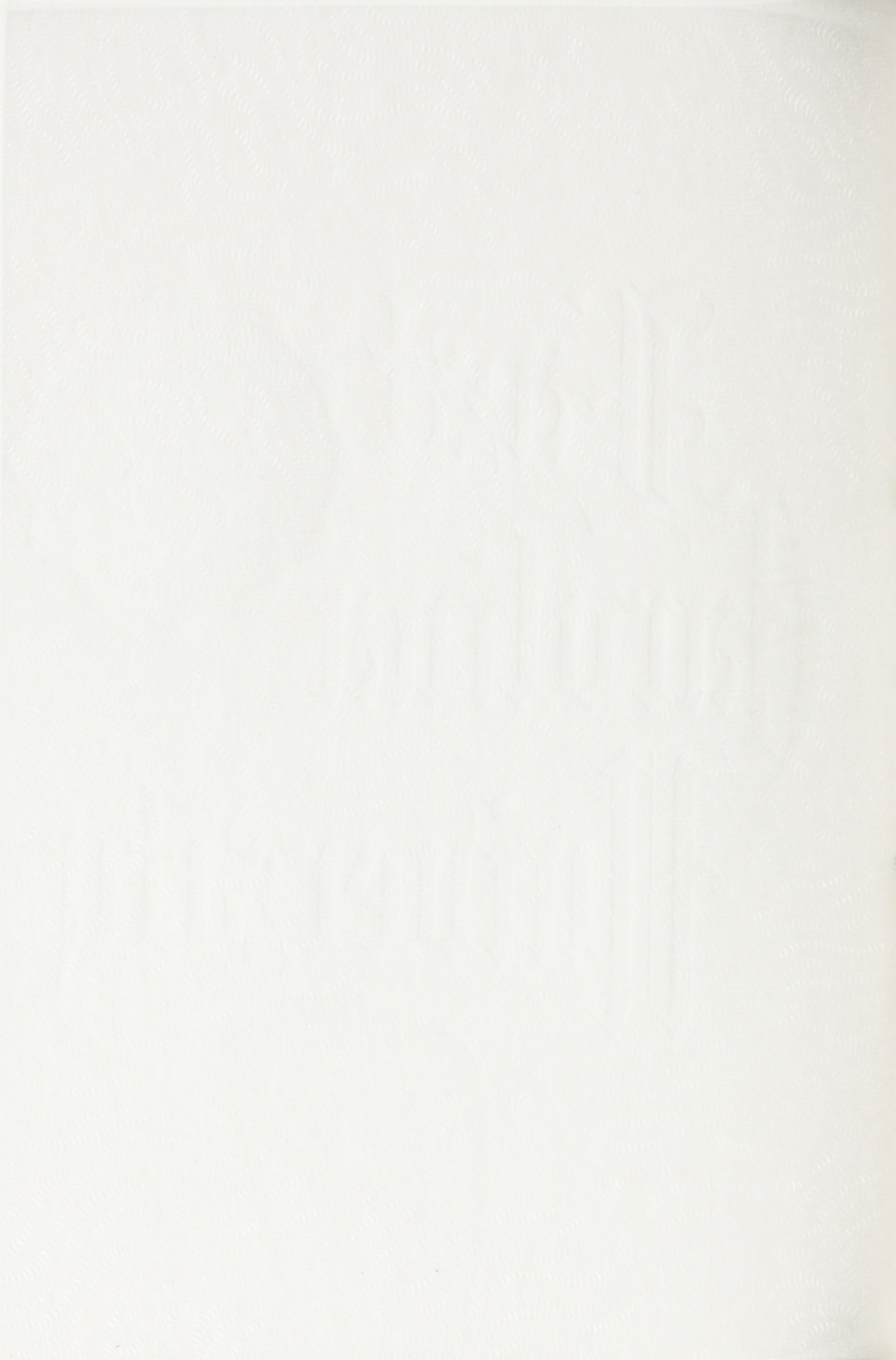


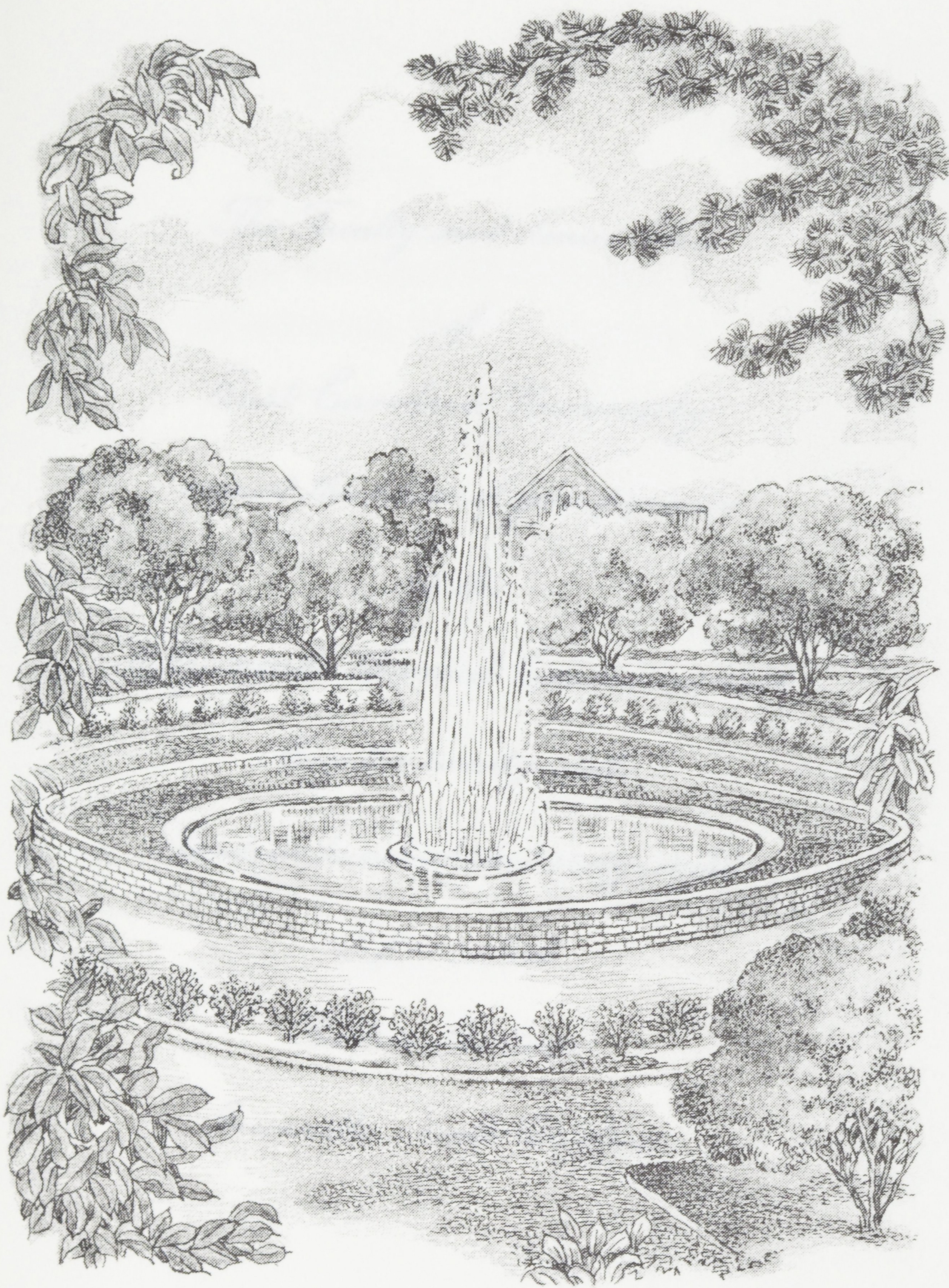
Handwritten text in a highly decorative, calligraphic script, likely Gothic or Blackletter. The text is arranged in two lines, with the second line being significantly larger and more ornate than the first. The letters are tall and narrow, with elaborate flourishes and serifs.

Handwritten text in a highly decorative, calligraphic script, likely Gothic or Blackletter. The text is arranged in two lines, with the second line being significantly larger and more ornate than the first. The letters are tall and narrow, with elaborate flourishes and serifs.



WRIGHT CIRCLE





WRIGHT CIRCLE

FRONT COVER

The Faculty and Senior Class
of
East Carolina University
request the honor of your presence
at the
Fifty-ninth Annual Commencement
May the twenty-sixth
Nineteen hundred and sixty-eight
at five o'clock
Ficklen Stadium
Greenville, North Carolina

The [unclear] [unclear]

[unclear] [unclear]

[unclear] [unclear]

[unclear] [unclear]

[unclear] [unclear]

[unclear] [unclear]

[unclear] [unclear]

**EAST CAROLINA UNIVERSITY
GREENVILLE, NORTH CAROLINA**

PROGRAM

Saturday, May 25, 1968

- 12:30 p.m. Alumni Luncheon
South Cafeteria**
- 3:15 p.m. President's Reception
The Quadrangle**

Sunday, May 26

- 4:00 p.m. Band Concert
Ficklen Stadium**
- 5:00 p.m. Commencement Address**
- 5:45 p.m. Awarding of Degrees**

EAST CAROLINA UNIVERSITY
GREENSBORO, NORTH CAROLINA

PROGRAM

Saturday, May 22, 1968

12:30 p.m. Alumni Luncheon
South Coliseum

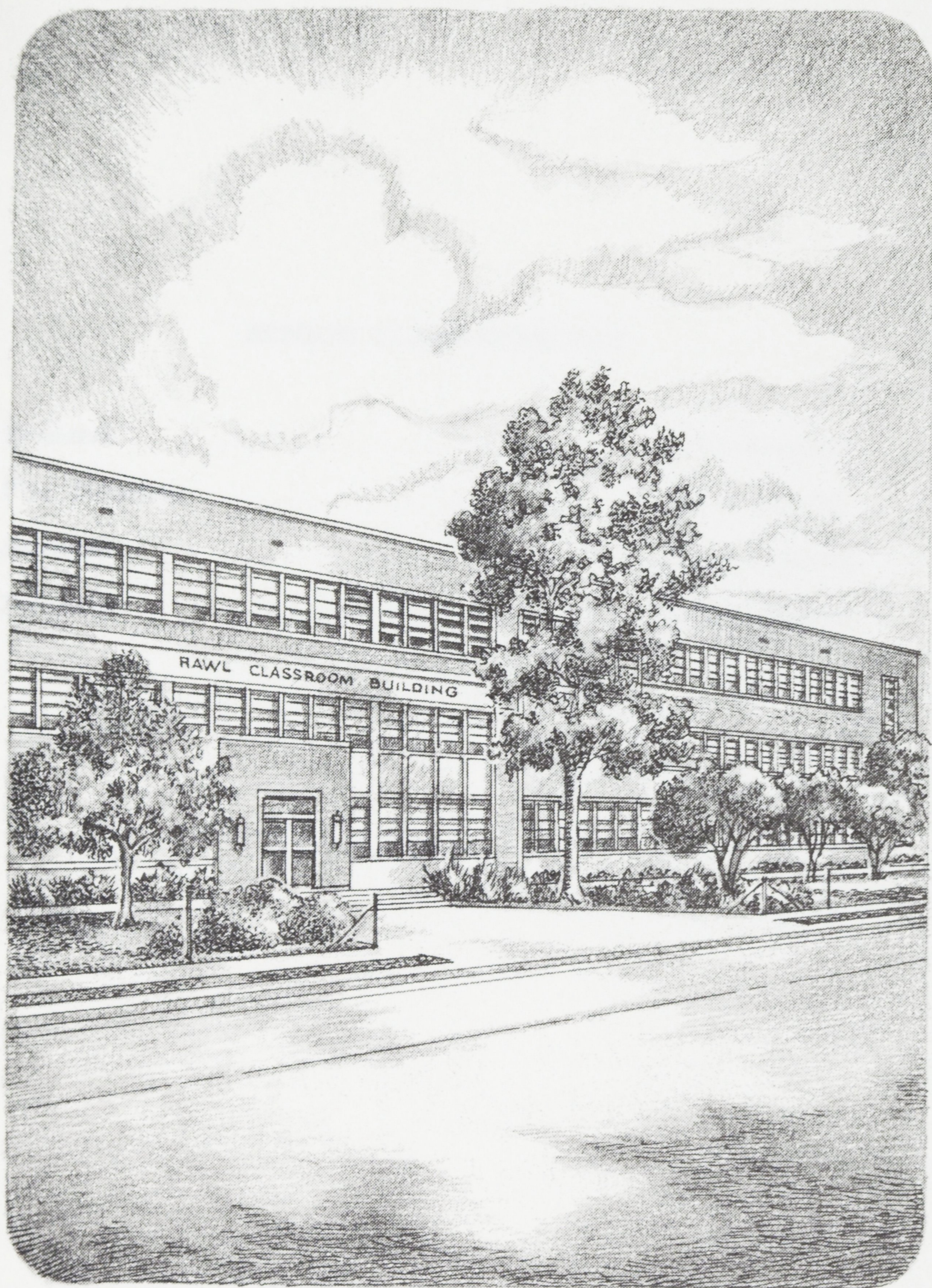
3:15 p.m. President's Reception
The Quadrangle

Sunday, May 23

4:00 p.m. Band Concert
Fulton Stadium

5:00 p.m. Commencement Address

5:45 p.m. Awarding of Degrees





SENIOR CLASS OFFICERS

President Irvin Breedlove
Vice President Grace Mitchell
Secretary Caroline Riddle
Treasurer Brenda Bullock

SENIOR CLASS OFFICERS

President Irvin Heston
Vice President Grace Mitchell
Secretary Caroline Riddle
Treasurer Mauda Nelson



SENIOR CLASS OFFICERS

President John Anderson
Vice President Susan Johnson
Secretary David Smith
Treasurer Emily White

