

State Board of Agriculture.

W. F. GREEN, CHAIRMAN.
FRANKLINTON.
W. R. WILLIAMS, FALKLAND.
J. B. COFFIELD, EVERETTS.
W. R. CAPEHART, AVOCA.
W. E. STEVENS, CLINTON.
J. S. MURROW, CENTRE.
J. F. PAYNE, ALMA.
A. LEAZAR, MOORESVILLE.
S. L. PATTERSON, YADKIN VALLEY.
C. D. SMITH, FRANKLIN.



JOHN ROBINSON, COMMISSIONER,
AGRICULTURE AND IMMIGRATION.
T. K. BRUNER, SECRETARY.

BRANDON NASHVILLE

RALEIGH, Franklin N.C.

Dec 2nd 1893

His Excellency Elias Carr gov
Raleigh N.C.

Dear Sir

I was much pleased with your talk at the Negro Agricultural Fair at Raleigh, and I have concluded to make you a present of a manuscript of mine. Amidst a great deal of suffering last winter and moved by a desire to do something, I wrote it on a board across my lap. My object was to discuss the great importance of our cotton production and the labor employed in it. The subject I know is a very grave one, but you will, perhaps think I had ^{an} awkward way of getting at it. I sent it to Forum hoping to get a few dollars for it, to help me buy a little "lock" of sugar and coffee. Mr Page, however, it seems was afraid of the political feature in it, as you will see by his letter which I enclose. There was his mistake, for I assure you that there is as much "Old Sooty" in the Republican party to day as there ever was. Well, I am old and superannuated and never expect to use this manuscript, and if you can glean from it any suggestions which you can turn to account

State Board of Agriculture.

W. F. GREEN, CHAIRMAN.
FRANKLINTON.
W. R. WILLIAMS, FALKLAND.
J. B. COFFIELD, EVERETTS.
W. R. CAPEHART, AVOCA.
W. E. STEVENS, CLINTON.
J. S. MURROW, CENTRE.
J. F. PAYNE, ALMA.
A. LEAZAR, MOORESVILLE.
S. L. PATTERSON, YADKIN VALLEY.
C. D. SMITH, FRANKLIN.



JOHN ROBINSON, COMMISSIONER.
AGRICULTURE AND IMMIGRATION.
T. K. BRUNER, SECRETARY.

DEPARTMENT OF AGRICULTURE

BRANDON, NASHVILLE

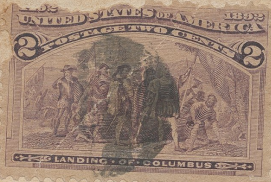
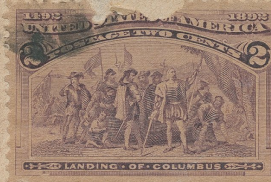
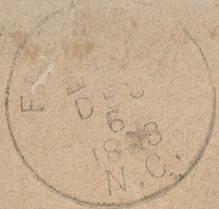
RALEIGH.

I will die easier from having contributed something to the benefit of our beloved South land. I do hope you will force yourself to read it. If not instructive, it may ^{be} worth the reading as a curiosity.

I am now engaged on an article in which I undertake to show by documentary evidence that 27 of the southern and western states, furnish in the prime articles of raw cotton, wheat and wheat flour, Corn and corn meal, Rye & rye flour, Oats and Oat meal, Barley, Hog and hog products, Beef and beef products including live cattle more than two thirds of the total exports for the year ending June 30th 1899. - that we are in commercial bondage - that the planters, farmers and ranchmen who produced these articles of export, only got a minimum consideration for their products - barely enough to cover the cost of production. while the great commercial monopoly, got all the benefits. There are some curious figures in the Tables which show these results. I can't bidle and when this article is finished I may desire your aid in helping me find a paper that will publish it. It will at least contain some valuable data. With high personal regard for you I am sincerely yours
C. D. Smith

Dr C. H. Smith

The Major



His Excellency Elias Ham Gov
Raleigh N.C

PALEIGH, N.C.
DEC
11 30 AM
1893
REC'D