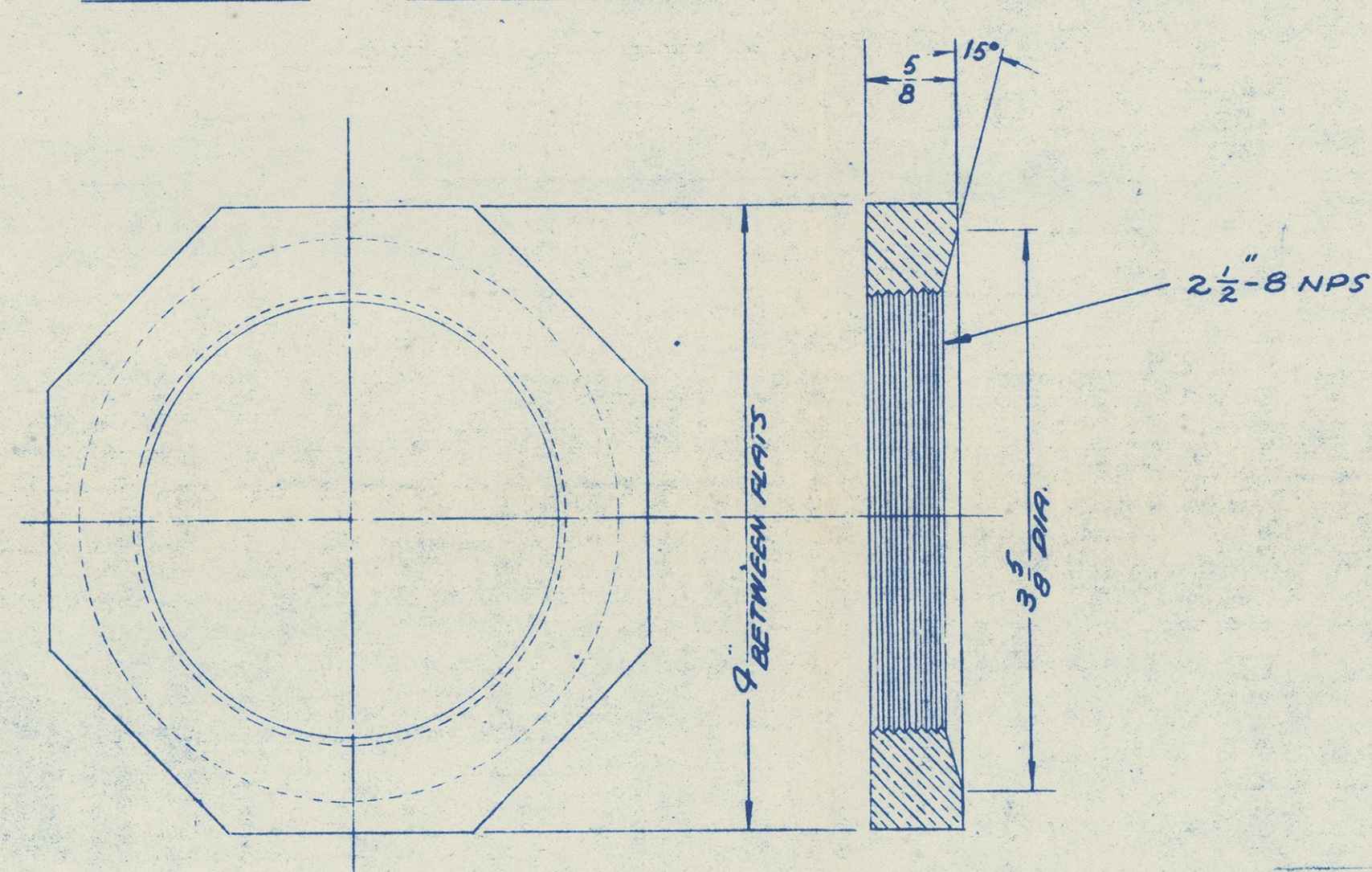
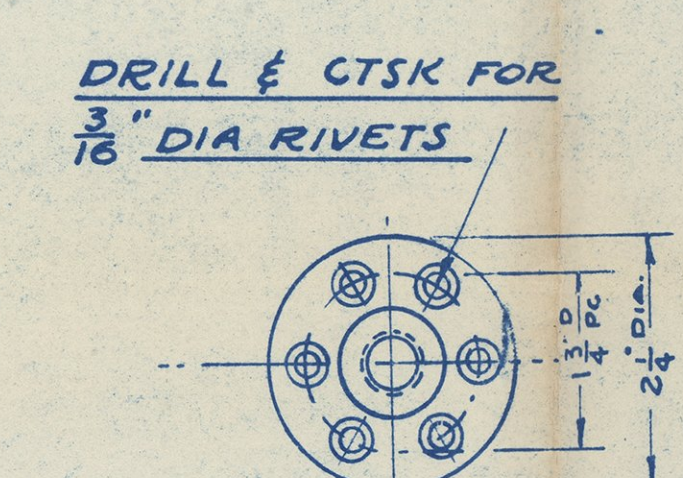
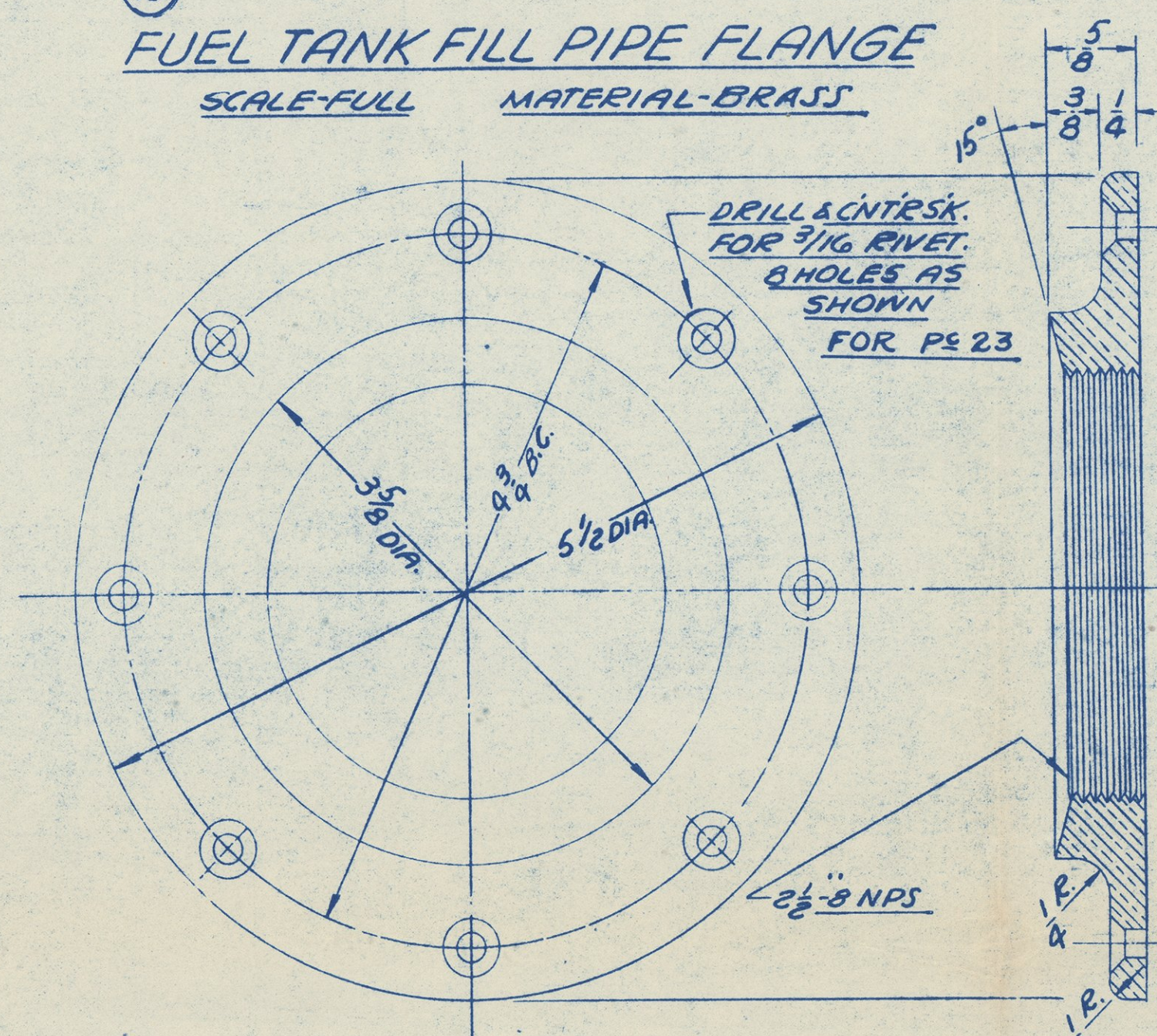


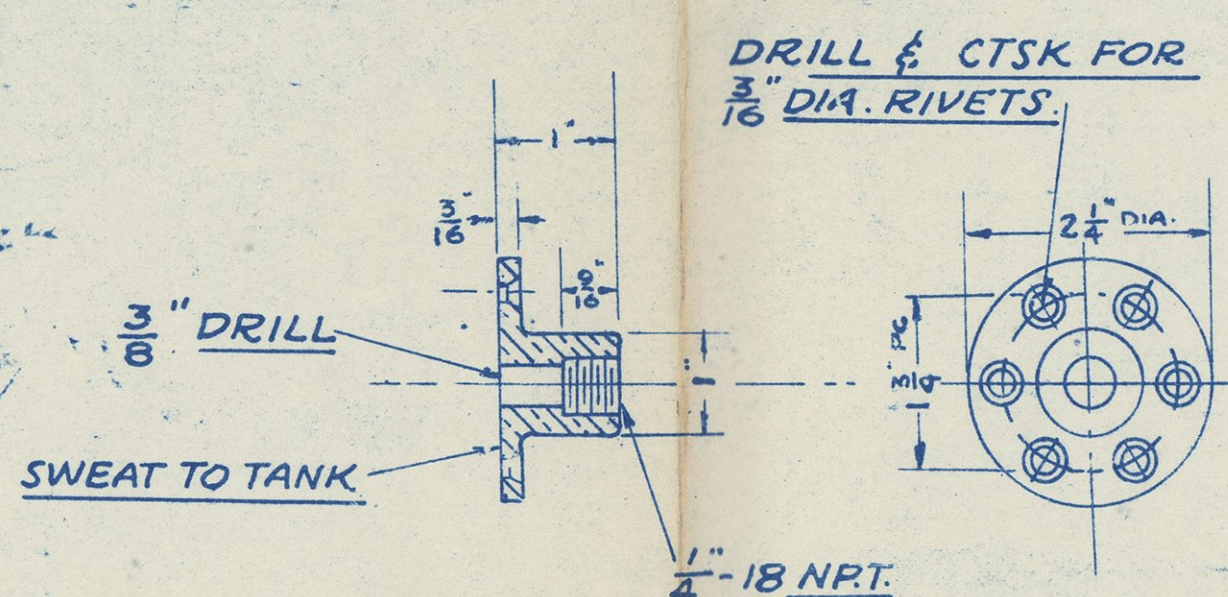
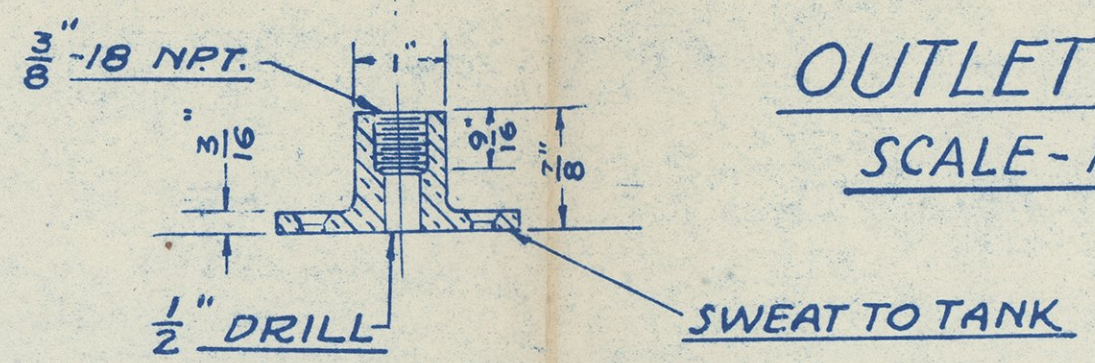
9 FILLER PIPE LOCK NUT
SCALE - FULL MATERIAL - BRASS



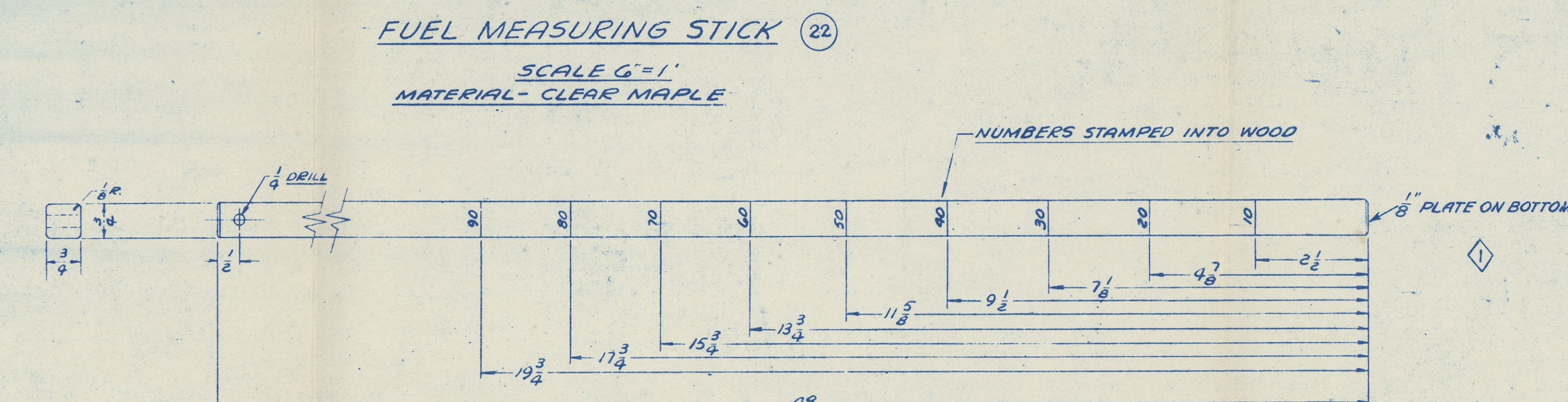
10 FUEL TANK FILL PIPE FLANGE
SCALE - FULL MATERIAL - BRASS



19 OUTLET FLANGE
SCALE - HALF SIZE



20 RETURN FLANGE
SCALE - HALF SIZE



SCHEDULE OF MATERIAL

QUANTITY REQUIRED FOR ONE...					ALTERATIONS		
PEN#	NAME	QTY	SPEC.	MATERIAL	TYPE	REMARKS	APPROVED
1	FUEL TANKS	1	1/4"	TERNEPLATE			
2	1/4" PIPE UNION	2	1/4"	WELDED GALV.			
3	1/4" PIPE NIPPLE	2	1/4"	WELDED GALV.			
4	HOSE CLAMP	4	COML.	STRAIGHT GALV.			
5	FLEX. HOSE	2	COML.	RUBBER	3/4" X 1/2" I.D.		
6	DECK PLATE	2	COML.	BRASS	2 1/2" X 1 1/2" X 1/4"		
7	WOODSCREWS FN	8	4251	BRASS	1/2" X 1 1/2"		
8	FILL PIPE	4	1/4"	WELDED GALV.			
9	LOCKNUT	2	1/4"	BRASS			
10	TANK FLANGE	2	1/4"	BRASS			
11	WOODSCREWS	16	1/2"	GALV.			
12	WOODSCREWS	16	1/2"	GALV.			
13	CARR. BOLT NUT L. WDR	8	1/2"	GALV.			
14	CARR. BOLT NUT WDR	8	1/2"	GALV.			
15	CARR. BOLT NUT WDR	12	1/2"	GALV.			
16	TAPE	78	COML.	CARBON CLOTH			
17	STAPLES	200	FINISH	COPPER			
18	CARR. BOLT NUT WDR	4	1/2"	GALV.			
19	OUTLET FLANGE	4	1/2"	BRASS			
20	RETURN FLANGE	2	1/2"	BRASS			
21	PIPE PLUG	2	1/4"	BRASS			
22	MEASURING STICK	1		HARD			
23	RIVET	16	1/4"	BRASS			

ALTERATIONS

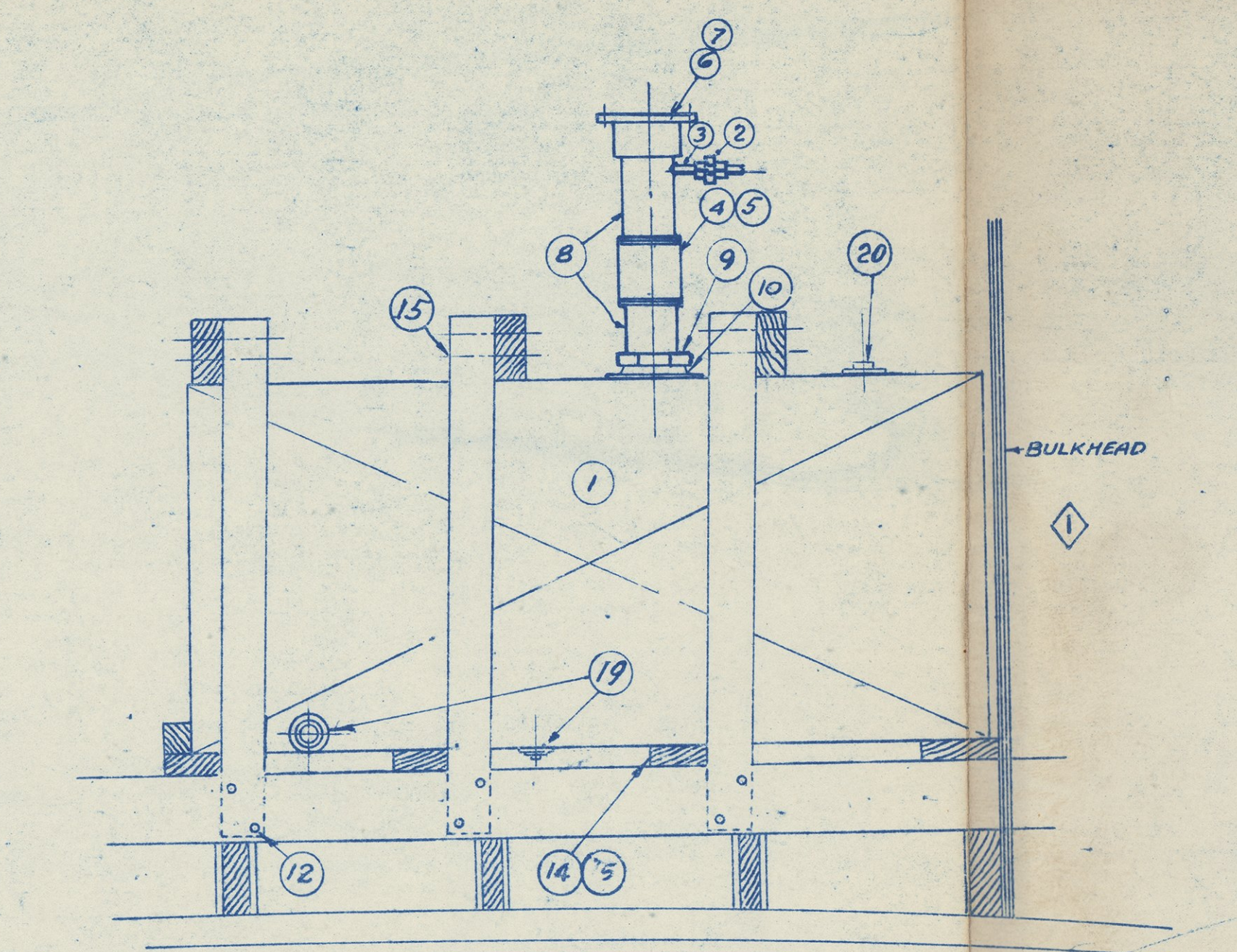
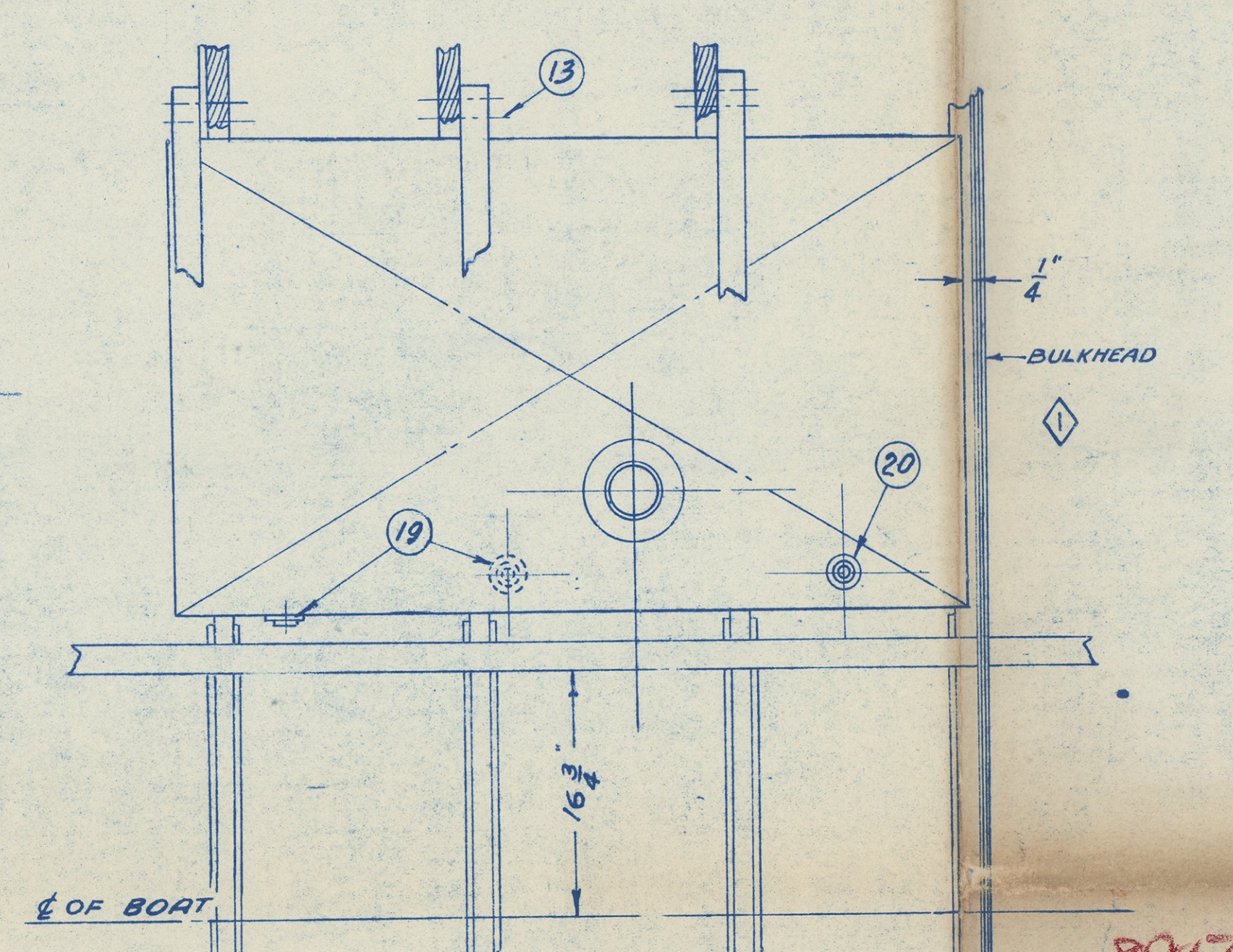
MARK	DATE	DESCRIPTION	APPROVED
1	9/1/44	DIMENSION CHANGED, 1" TO 1 1/2" NOTE CHANGED, TANKS RELOCATED, DIM. CHANGED, NOTES ADDED.	EE

GENERAL NOTES:
THIS DRAWING APPLIES TO BOTH CLASSES, LCP (R) AND LCP (L).

REFERENCE DRAWINGS:

	BUREAU NO.
ARR. BILGE PUMP & S.W. COOL'G SYSTEM - LCP (R)	8961
FUEL PIPING SYSTEM - LCP (R)	8960
ENGINE BED MOUNTINGS - LCP (R)	8952
EXHAUST PIPING SYSTEM & DETAILS - LCP (R)	8963
SKEG & UNDERWATER FITTINGS - LCP (R)	8955

TANK INSTALLATION
SCALE 1 1/2" = 1'



NOTE: CROSS FILE FOR LCP (R) AND LCP (L)

FINISHES:
F1 - MACHINE FINISH SMOOTH
F2 - MACHINE FINISH ROUGH
F3 - BUFF
F4 - FINISH GROUND
F5 - FINISH FILE

EXAMINED BY: *W. J. ...* PRINCIPAL ENGINEER
IN CHARGE: *W. J. ...* DATE: 9/6/44

36' LANDING CRAFT
LCP (R) & (L)

FUEL TANK DETAILS

SCALE: AS SHOWN

NAVY DEPARTMENT
BUREAU OF SHIPS
WASHINGTON, D. C. SEPTEMBER 6, 1944

BUREAU OF SHIPS NUMBER
LCP (R) - 8959 ALT. 1