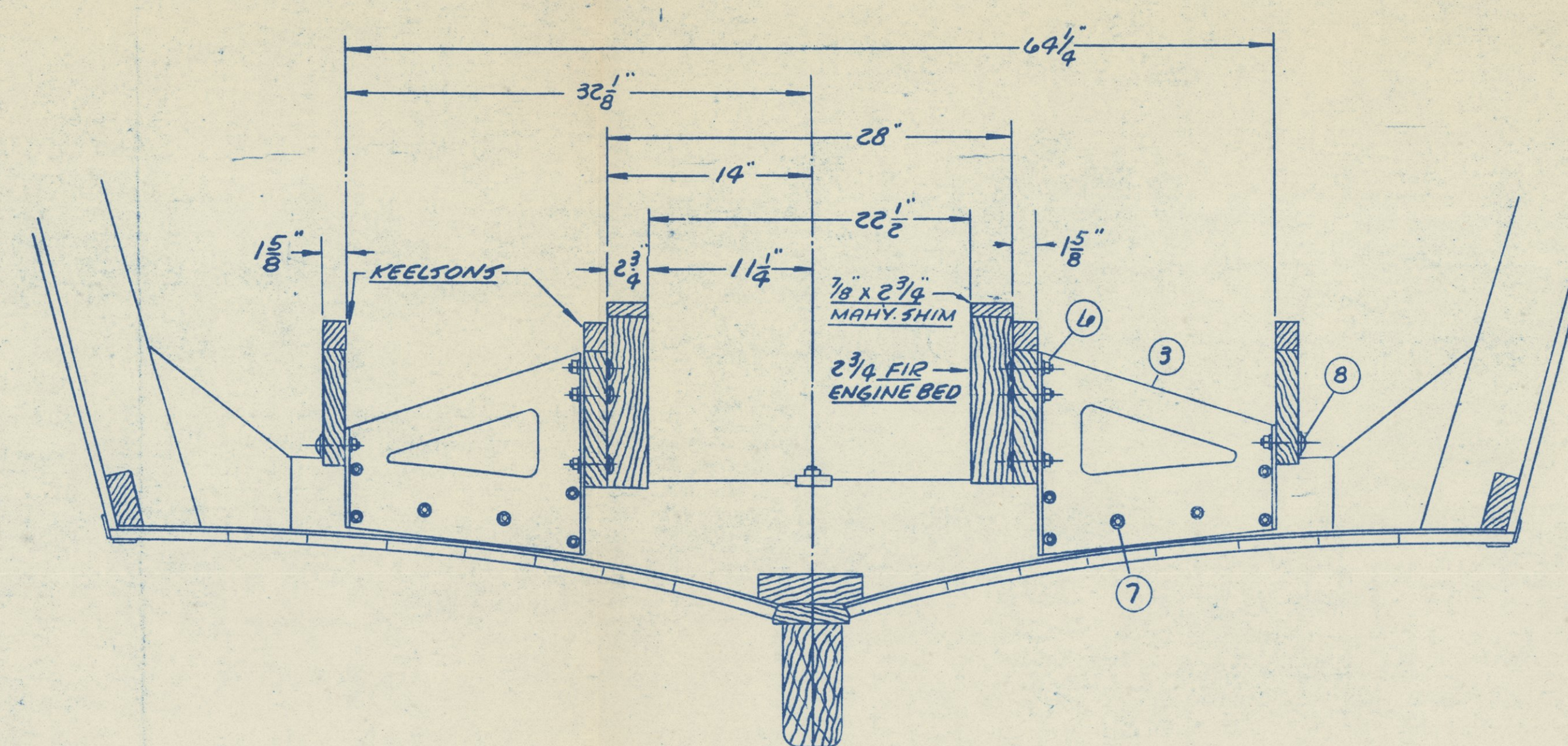
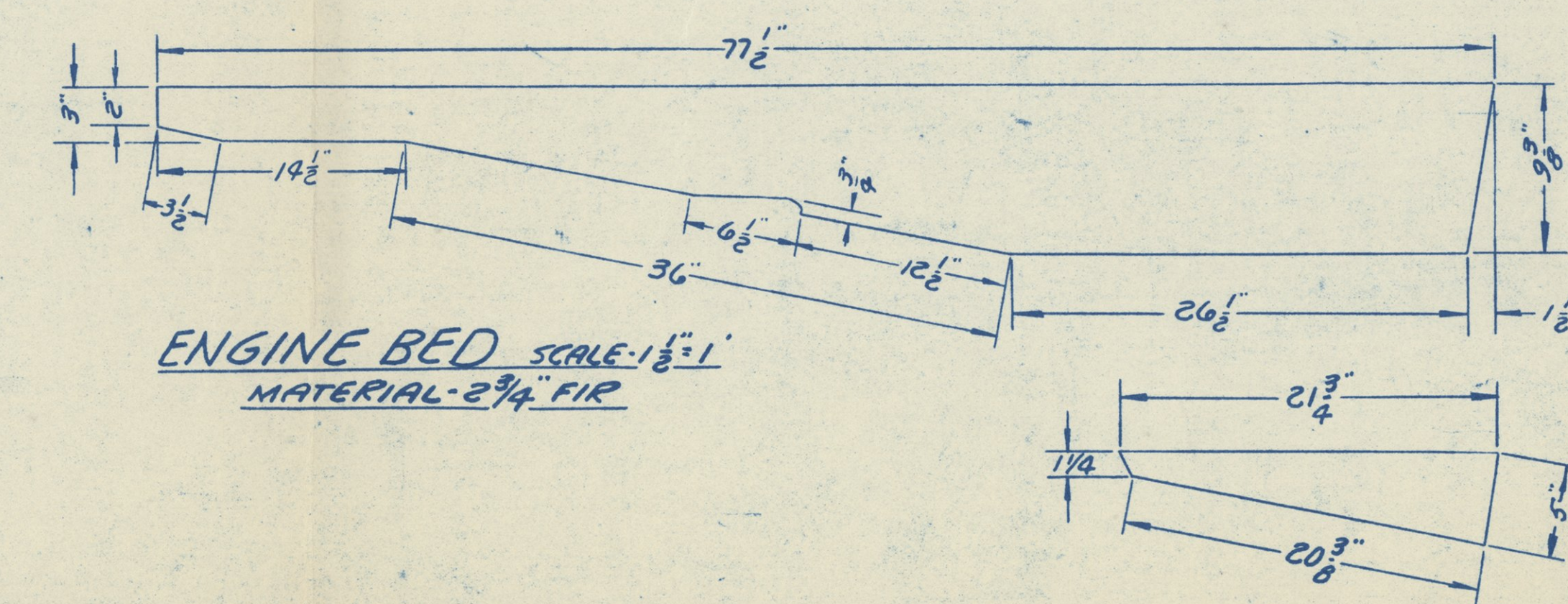
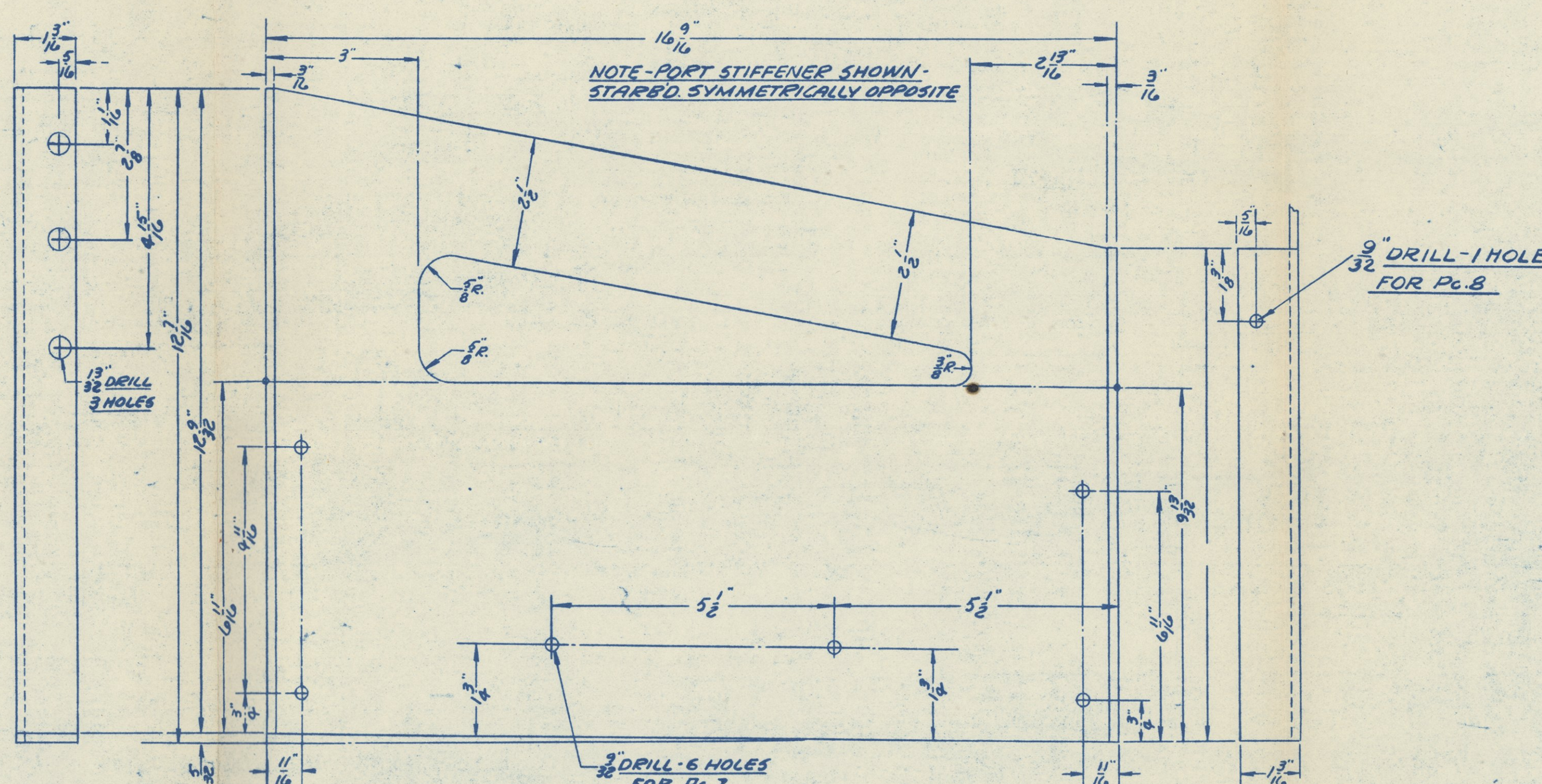


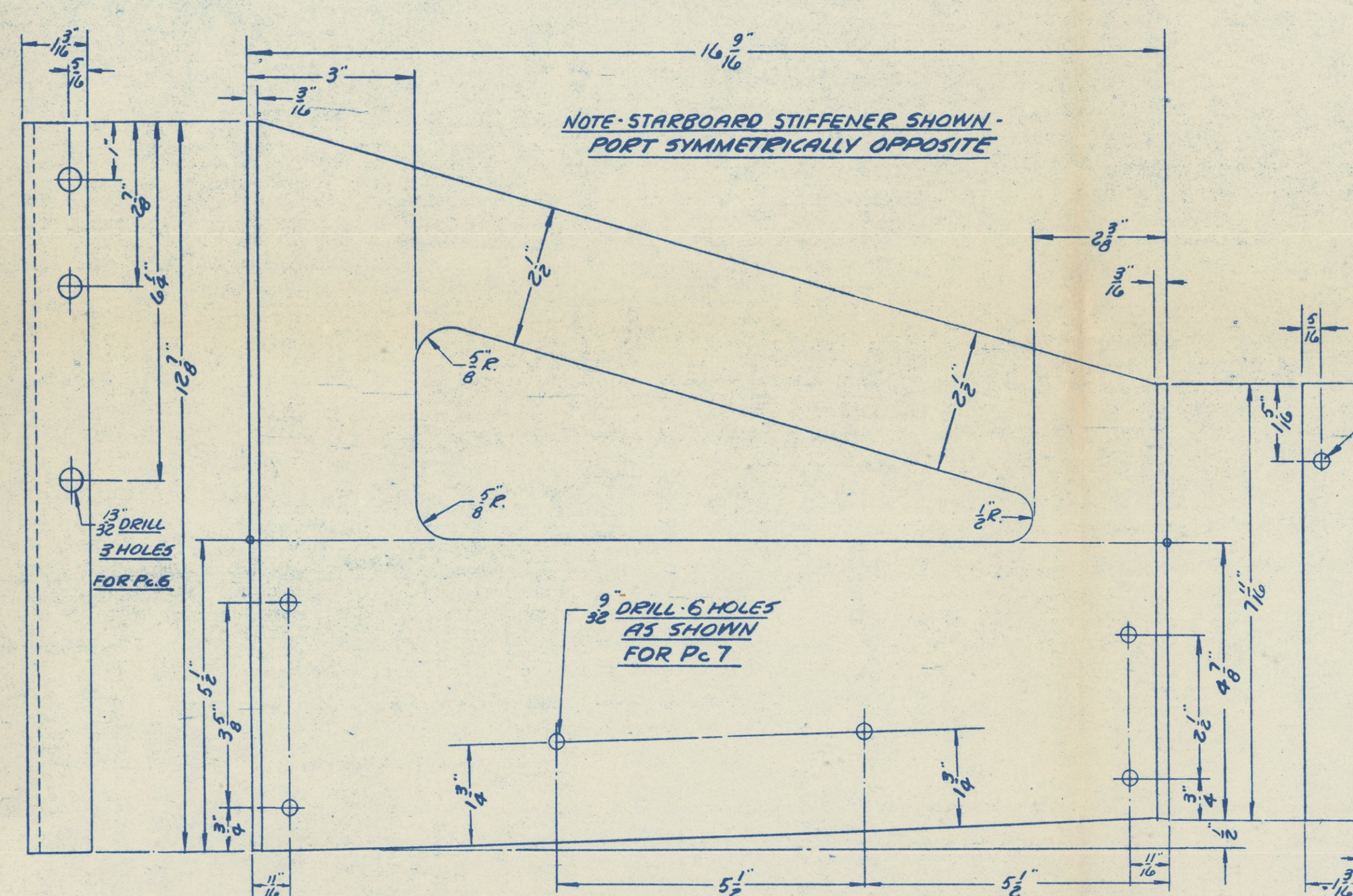
③ ENGINE BED STIFFENER - No. 16 FRAME - P&S  
SCALE 6"=1"



SECTION - No. 16 FRAME  
SCALE 1 1/2"=1"



⑤ ENGINE BED STIFFENER - No. 20 FRAME - P&S  
SCALE 6"=1"



④ ENGINE BED STIFFENER - No. 18 FRAME P&S  
SCALE 6"=1"

# SCHEDULE OF MATERIAL

QTY	NAME	QTY	REMARKS
1	CARPENTERS NUT	20 43811 GALV. STEEL	1/2" X 8"
2	WASHER	20 4651 GALV. STEEL	1/2" PLAT
3	STIFFENER	2 4651 GRM. STEEL	GALV. - P&S
4	STIFFENER	2 4651 GRM. STEEL	GALV. - P&S
5	STIFFENER	2 4651 GRM. STEEL	GALV. - P&S
6	CARPENTERS NUT	18 43811 GALV. STEEL	3/8" X 2 1/2"
7	CARPENTERS NUT	36 43811 GALV. STEEL	1/2" X 1 1/2"
8	CARPENTERS NUT	6 43811 GALV. STEEL	1/4" X 2 1/4"
9	WASHER	42 43811 GALV. STEEL	3/4" PLAT
10	HANGER BOLTS	9 43811 GALV. STEEL	3/4" X 10"
11	SPECIAL MACHINE BOLT	2 4651 GRM. STEEL	GALV.
12	SPECIAL MACHINE BOLT	2 4651 GRM. STEEL	GALV.
13	WASHER	16 CONL. FABRIKKA	200 X 9/16 X 1/8 THICK
14	BUSHING	8 CONL. FABRIKKA	100 X 9/16 X 1/8 THICK
15	WASHER	8 4651 GRM. STEEL	GALV.
16	WASHER	9 43811 GALV. STEEL	3/4" PLAT
17	WASHER	12 CONL. GALV. STEEL	3/4" LOCK
18	WASHER PLATE	8 4651 GRM. STEEL	GALV.
19	NUTS	12 43811 GALV. STEEL	3/4" 10-NC-3
20			
21			
22			

## ALTERATIONS

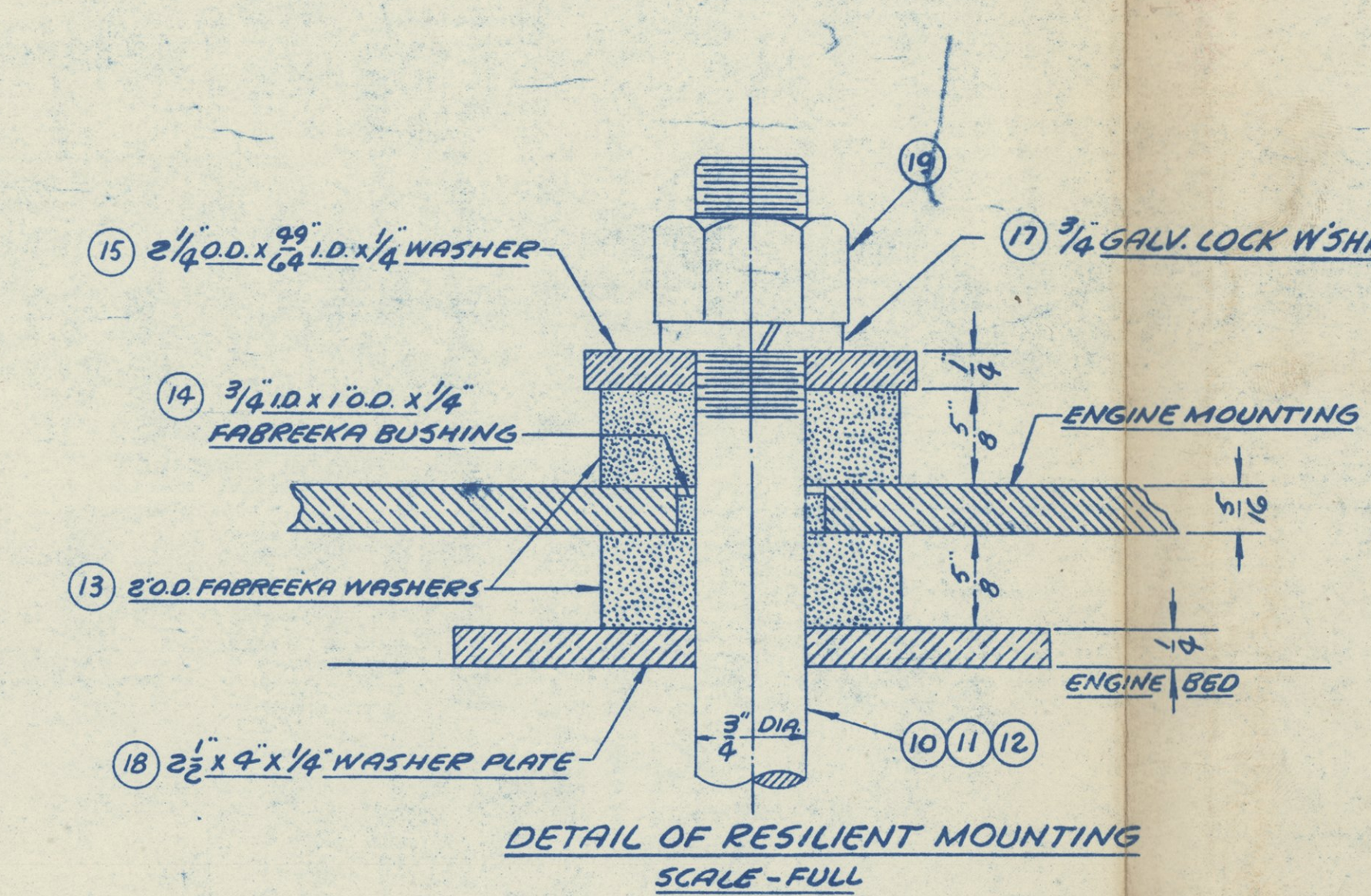
MARK	DATE	DESCRIPTION	APPROVED

### GENERAL NOTES:

THIS DRAWING APPLIES TO BOTH CLASSES, LCP(R) AND LCP(L).

### REFERENCE DRAWINGS:

ARR. BILGE PUMP & S.W. COOL'G SYSTEM - LCP(R) 8951  
FUEL TANK DETAILS - LCP(R) 8959  
EXHAUST-PIPING SYSTEM & DETAILS - LCP(R) 8963  
FUEL PIPING SYSTEM - LCP(R) 8960  
SKEG & UNDERWATER FITTINGS - LCP(R) 8955



⑩ SPECIAL MACHINE BOLT  
SCALE 6"=1"

⑪ SPECIAL MACHINE BOLT  
SCALE 6"=1"

⑬ WASHER  
SCALE 6"=1"

⑭ WASHER PLATE  
SCALE 6"=1"

NOTE: CROSS FILE FOR  
LCP(R) AND LCP(L)

FINISHES  
F - MACHINE FINISH SMOOTH  
P - MACHINE FINISH BROWN  
S - BUFF  
F - FINISH GROUND  
F - FINISH FILE

EXAMINED BY: *R.A. F.* PRINCIPAL ENGINEER  
IN CHARGE: *Neill* DATE: 9/2/44

**36' LANDING CRAFT**  
**LCP (R) & (L)**  
ENGINE BED & MOUNTINGS

SCALE: AS SHOWN

NAVY DEPARTMENT  
BUREAU OF SHIPS  
WASHINGTON, D.C.

SEPTEMBER 6, 1944  
*W.H. L.*  
FOR CHIEF OF BUREAU

BUREAU OF SHIPS NUMBER  
LCP(R) - 8952 ALT.