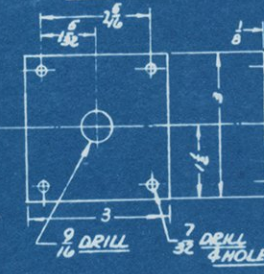
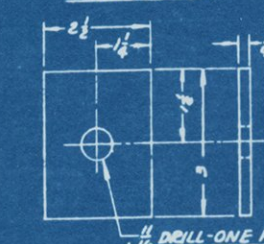


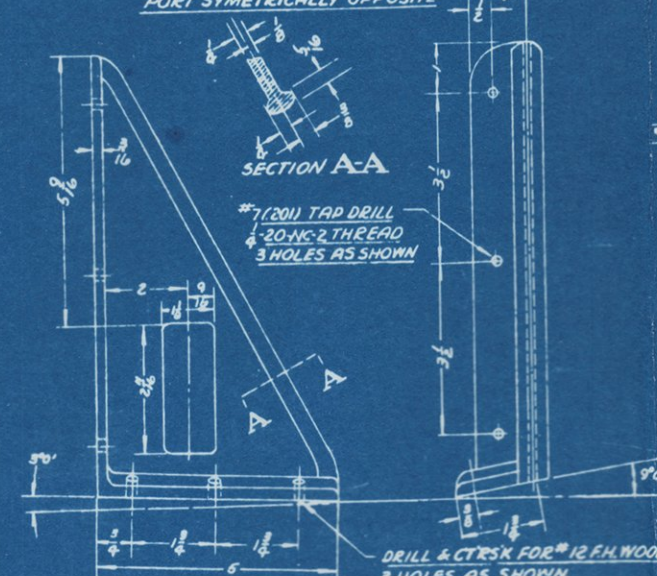
32 WASHER PLATE FOR  
1/2" EYE BOLT  
SCALE: 6"=1 FT.



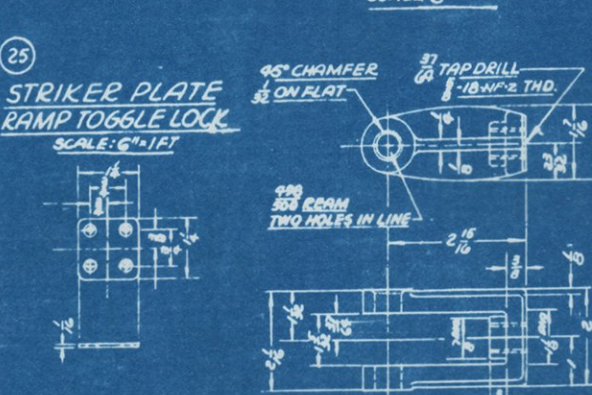
33 WASHER PLATE FOR  
1/2" EYE BOLT  
SCALE: 6"=1 FT.



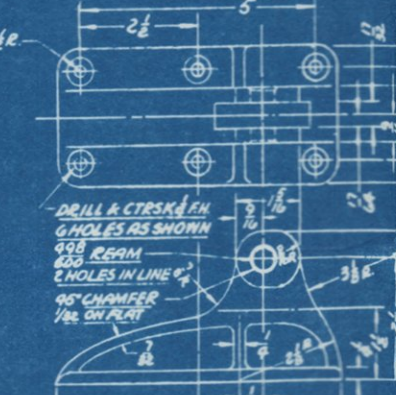
34 COAMING BRACKET  
SCALE: 6"=1 FT.



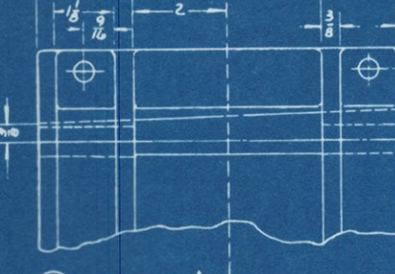
18 CLEVIS-RAMP TOGGLE LOCK  
SCALE: 6"=1 FT.



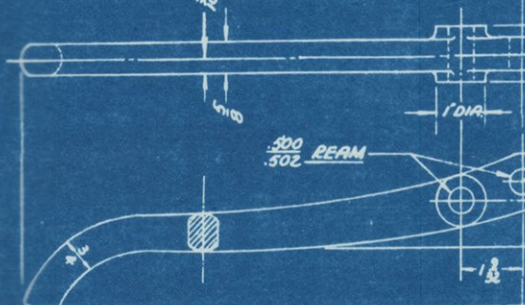
19 STANDARD-RAMP TOGGLE LOCK  
SCALE: 6"=1 FT.



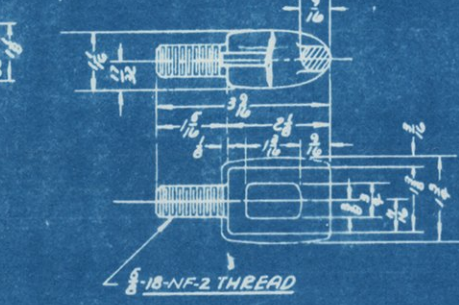
35 RAMP HINGE HULL BRACKET  
SCALE: 6"=1 FT.



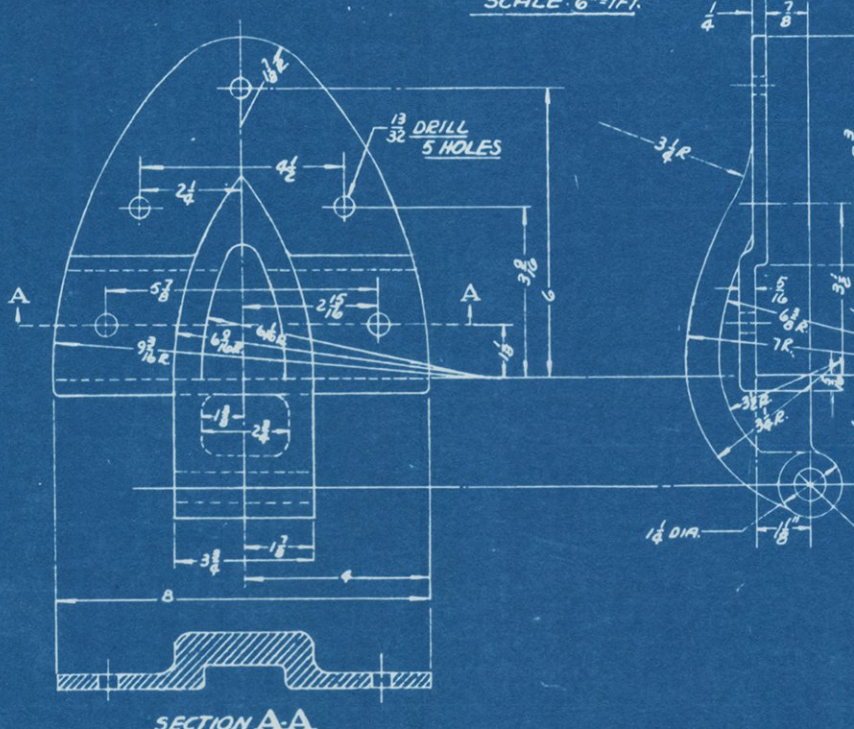
20 LEVER FOR RAMP TOGGLE LOCK  
SCALE: 6"=1 FT.



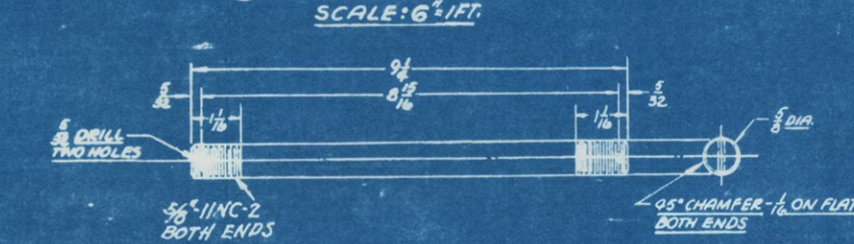
21 EYE BOLT-RAMP TOGGLE LOCK  
SCALE: 6"=1 FT.



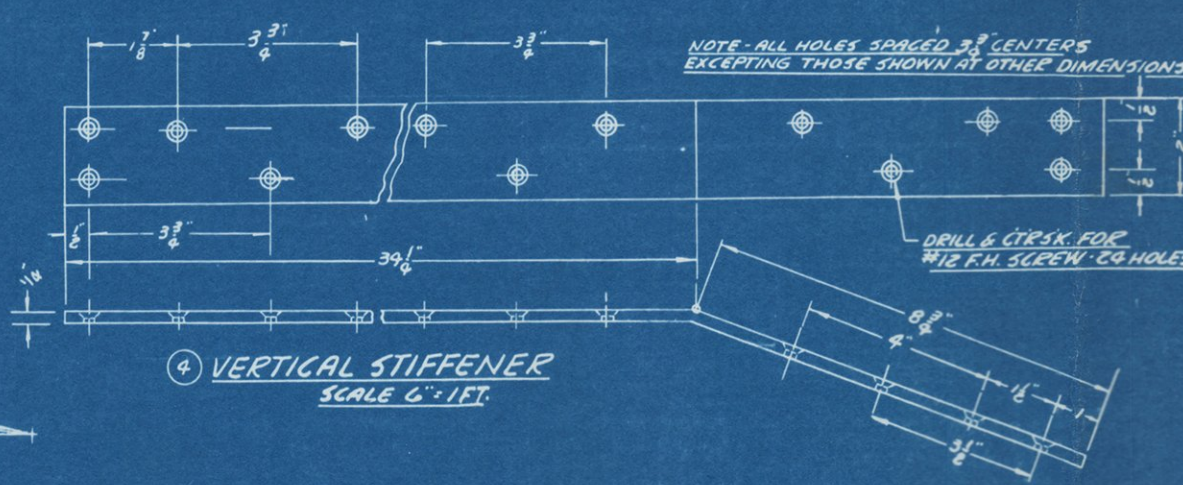
7 RAMP HINGE-RAMP BRACKET  
SCALE: 6"=1 FT.



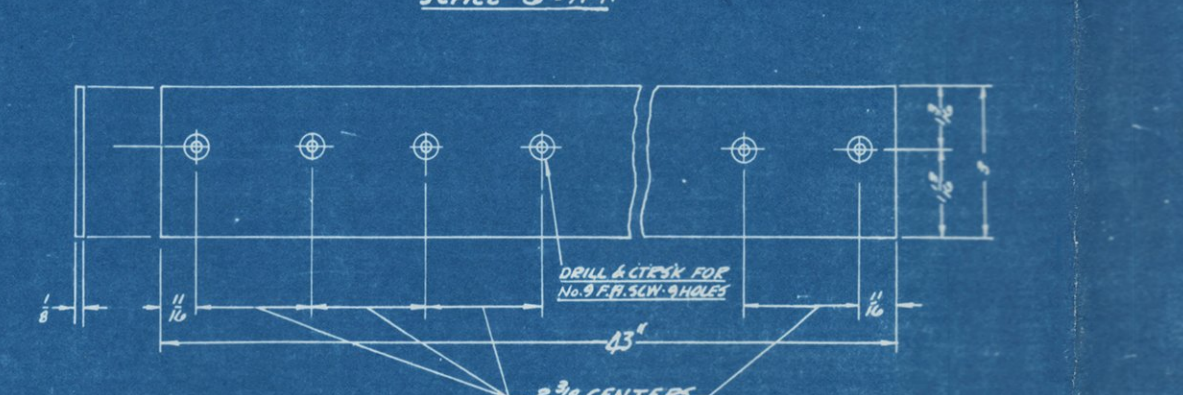
14 RAMP HINGE PIN  
SCALE: 6"=1 FT.



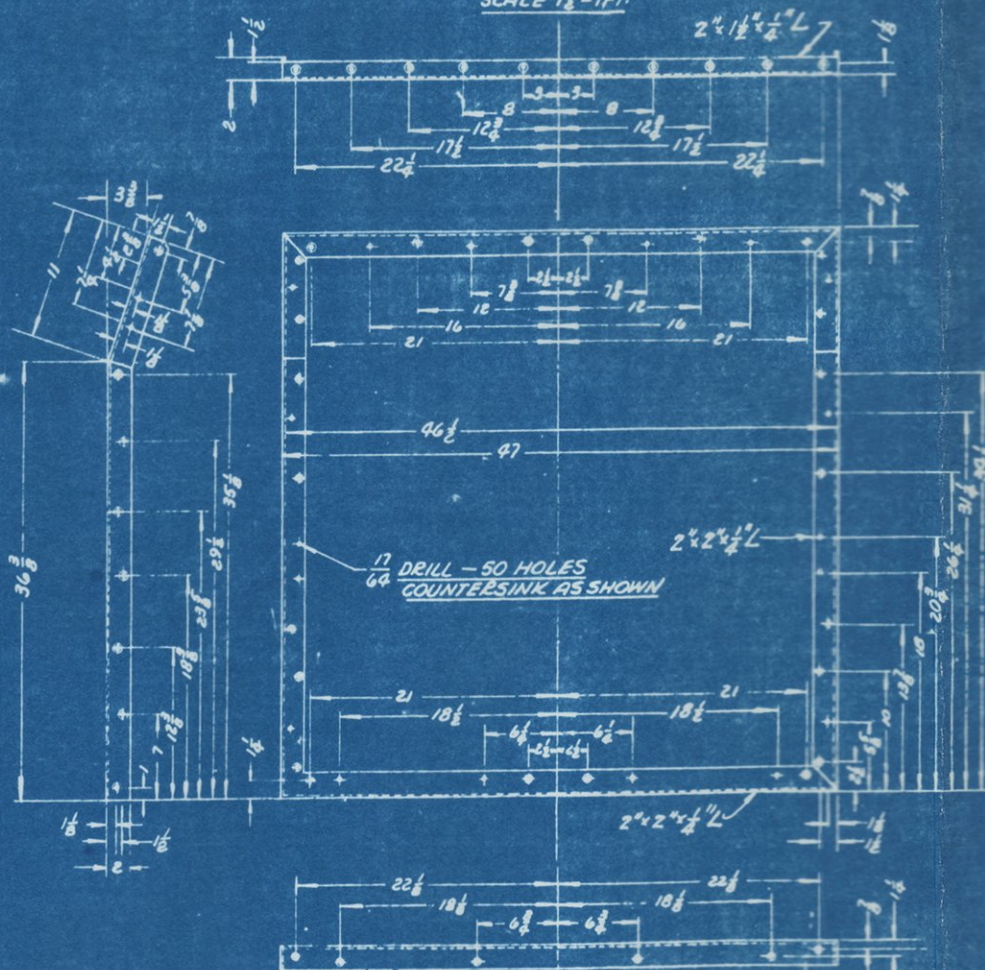
4 VERTICAL STIFFENER  
SCALE: 6"=1 FT.



5 HORIZONTAL STIFFENER  
SCALE: 6"=1 FT.



1 RAMP FRAME  
SCALE: 1 1/2"=1 FT.



SCHEDULE OF MATERIAL					MARK DATE	DESCRIPTION	APPROVED
ITEM	NAME	QTY	REMARKS	REMARKS			
1	RAMP FRAME	1	1/2" GALV. STEEL	1/2" x 2"			
2	CARP BOLT NUT	10	1/2" GALV. STEEL	1/2" x 2"			
3	WOODSCREW	80	1/2" GALV. STEEL	1 1/2" x 1 1/2" F.H.			
4	VERT. STIFFENER	1	1/2" GALV. STEEL	2 1/2" x 1/2" GALV.			
5	HORIZ. STIFFENER	2	1/2" GALV. STEEL	3 1/2" x 1/2" GALV.			
6	HULL HINGE BRACKET	1	1/2" GALV. STEEL	1/2" x 1/2" GALV.			
7	RAMP HINGE BRACKET	1	1/2" GALV. STEEL	1/2" x 1/2" GALV.			
8	CARP BOLT NUT	10	1/2" GALV. STEEL	1/2" x 2"			
9	CARP BOLT NUT	10	1/2" GALV. STEEL	1/2" x 2"			
10	CARP BOLT NUT	10	1/2" GALV. STEEL	1/2" x 2"			
11	CARP BOLT NUT	10	1/2" GALV. STEEL	1/2" x 2"			
12	WASHER	10	1/2" GALV. STEEL	1/2" x 1/2"			
13	WASHER	10	1/2" GALV. STEEL	1/2" x 1/2"			
14	HINGE PIN	1	1/2" GALV. STEEL	1/2" x 1/2"			
15	NUT SLOTTED	1	1/2" GALV. STEEL	1/2" x 1/2"			
16	COTTER PIN	1	1/2" GALV. STEEL	1/2" x 1/2"			
17	WOODSCREW	18	1/2" GALV. STEEL	1 1/2" x 1 1/2" F.H.			
18	TOGGLE LOCK CLEVIS	1	1/2" GALV. STEEL	1/2" x 1/2"			
19	TOGGLE LOCK STD.	1	1/2" GALV. STEEL	1/2" x 1/2"			
20	TOGGLE LOCK LEVER	1	1/2" GALV. STEEL	1/2" x 1/2"			
21	TOGGLE LOCK BOLT	1	1/2" GALV. STEEL	1/2" x 1/2"			
22	JAM NUT	1	1/2" GALV. STEEL	1/2" x 1/2"			
23	PIN	1	1/2" GALV. STEEL	1/2" x 1/2"			
24	PIN	1	1/2" GALV. STEEL	1/2" x 1/2"			
25	STRIKER PLATE	1	1/2" GALV. STEEL	1/2" x 1/2"			
26	WASHER PLATE	1	1/2" GALV. STEEL	1/2" x 1/2"			
27	WOODSCREW	10	1/2" GALV. STEEL	1 1/2" x 1 1/2" F.H.			
28	WOODSCREW	10	1/2" GALV. STEEL	1 1/2" x 1 1/2" F.H.			
29	WOODSCREW	10	1/2" GALV. STEEL	1 1/2" x 1 1/2" F.H.			
30	WOODSCREW	10	1/2" GALV. STEEL	1 1/2" x 1 1/2" F.H.			
31	WOODSCREW	10	1/2" GALV. STEEL	1 1/2" x 1 1/2" F.H.			
32	WOODSCREW	10	1/2" GALV. STEEL	1 1/2" x 1 1/2" F.H.			
33	WOODSCREW	10	1/2" GALV. STEEL	1 1/2" x 1 1/2" F.H.			
34	WOODSCREW	10	1/2" GALV. STEEL	1 1/2" x 1 1/2" F.H.			
35	WOODSCREW	10	1/2" GALV. STEEL	1 1/2" x 1 1/2" F.H.			
36	WOODSCREW	10	1/2" GALV. STEEL	1 1/2" x 1 1/2" F.H.			
37	WOODSCREW	10	1/2" GALV. STEEL	1 1/2" x 1 1/2" F.H.			
38	WOODSCREW	10	1/2" GALV. STEEL	1 1/2" x 1 1/2" F.H.			
39	WOODSCREW	10	1/2" GALV. STEEL	1 1/2" x 1 1/2" F.H.			
40	WOODSCREW	10	1/2" GALV. STEEL	1 1/2" x 1 1/2" F.H.			
41	WOODSCREW	10	1/2" GALV. STEEL	1 1/2" x 1 1/2" F.H.			
42	WOODSCREW	10	1/2" GALV. STEEL	1 1/2" x 1 1/2" F.H.			
43	WOODSCREW	10	1/2" GALV. STEEL	1 1/2" x 1 1/2" F.H.			
44	WOODSCREW	10	1/2" GALV. STEEL	1 1/2" x 1 1/2" F.H.			
45	WOODSCREW	10	1/2" GALV. STEEL	1 1/2" x 1 1/2" F.H.			
46	WOODSCREW	10	1/2" GALV. STEEL	1 1/2" x 1 1/2" F.H.			
47	WOODSCREW	10	1/2" GALV. STEEL	1 1/2" x 1 1/2" F.H.			
48	WOODSCREW	10	1/2" GALV. STEEL	1 1/2" x 1 1/2" F.H.			
49	WOODSCREW	10	1/2" GALV. STEEL	1 1/2" x 1 1/2" F.H.			
50	WOODSCREW	10	1/2" GALV. STEEL	1 1/2" x 1 1/2" F.H.			

REFERENCE PLANS: BUREAU NO.  
OUTBOARD PROFILE & PLAN - LCP(R) 8947  
INBOARD PROFILE & PLAN - LCP(R) 8948  
SECTIONAL DETAILS - LCP(R) 8950

36' LANDING CRAFT  
LCP(R)  
RAMP DOOR DETAILS

SCALE: AS SHOWN  
NAVY DEPARTMENT  
BUREAU OF SHIPS  
WASHINGTON, D. C. OCT. 10, 1944

BUREAU OF SHIPS NUMBER  
L.C.P.(R) 8958 ALT.