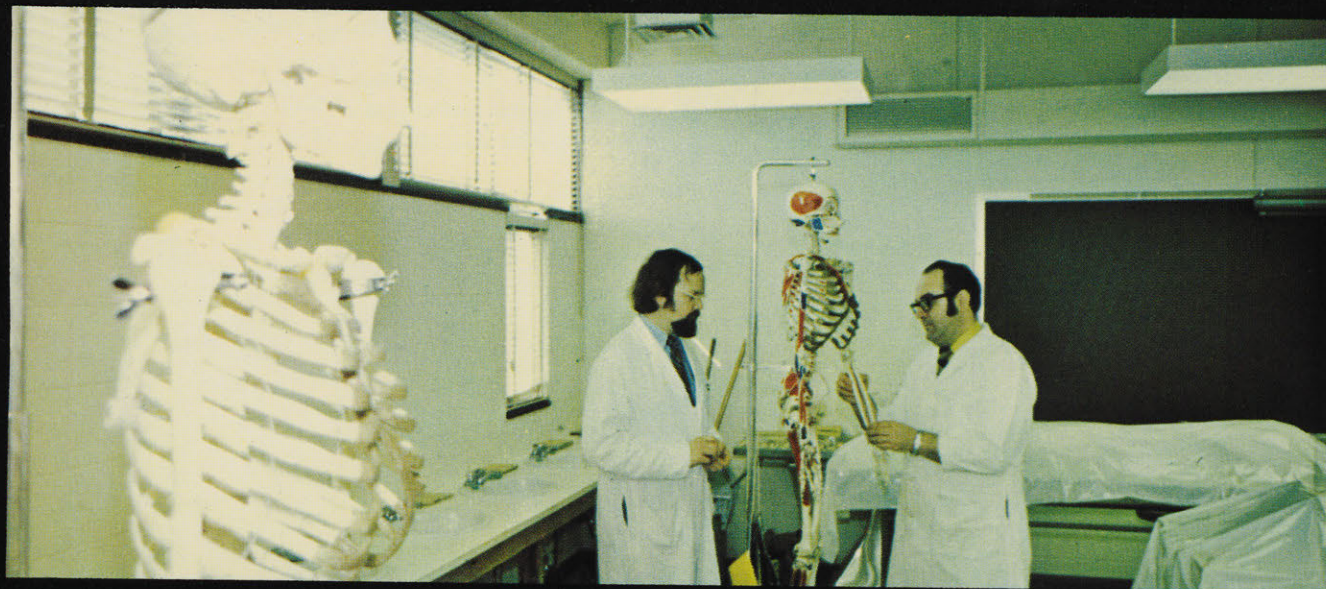


A MEDICAL SCHOOL



"The shortage of physicians in eastern North Carolina is severe. The establishment of a medical school at East Carolina University may be expected to contribute in some degree to alleviating this shortage."

East Carolina University - Greenville, North Carolina 27834

"North Carolina has a population of about five million. Among the states, in 1967, it ranked 39th in total physician/population ratio and 44th in the practicing-physician/population ratio. Of the 50 states, it ranks 11th in population, 21st in the number of entering medical students, and 46th in the number of entering medical students per 100,000 population."



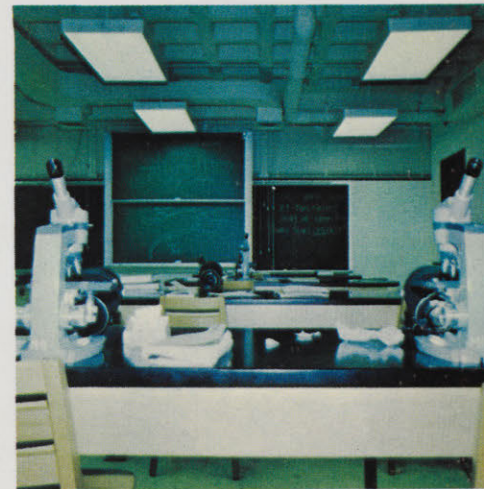
HEALTH AFFAIRS LIBRARY

"The plans for (further development and expansion) of the Library appear reasonable."



SCIENCE BUILDING

"The interim facilities for the School of Medicine in the new Science Building are attractive and seem thoroughly adequate..."



TEACHING LABORATORY

"... four laboratory-teaching areas are assigned to Medicine for: (1) Biochemistry, (2) Physiology and Pharmacology, (3) Pathology, Neuroanatomy, and Histology, and (4) Gross Anatomy."

"The progress that has been made in the last few years toward laying the groundwork for a School of Medicine, particularly by the North Carolina General Assembly and the administration of East Carolina University, has been impressive... The qualifications of the faculty members now in residence seem adequate."



SCHOOL OF NURSING

Established: 1960
NLN Accredited: 1964; 1970
Faculty: 23
BSN Degrees Through 1970: 203
Graduates Receiving RN: 203
Current Enrollment: 235



SCHOOL OF ALLIED HEALTH AND SOCIAL PROFESSIONS (completion date 1972)

Established: 1968
BS Degree Programs:
Medical Technology
Physical Therapy
Social Work
Medical Record Science
Occupational Therapy (1971)
Dental Hygiene (1972)



DEVELOPMENTAL EVALUATION CLINIC

Established: 1965
Staff: 11
Counties Served: 28
No. of Clients: 400



RESEARCH LABORATORY

Research laboratories, two classrooms, and office space for 22 medical faculty members have been assigned to medicine.



"The establishment of a two-year medical school at East Carolina University may be expected to increase interest of North Carolina students in the study of medicine and, by increasing opportunities for such study, contribute to this desired increase in interest."

THE DEVELOPMENT OF A SCHOOL OF MEDICINE

- 1964 — Request to the University by prominent physicians to establish a School of Medicine.
- 1965 — Endorsement by University Board of Trustees.
General Assembly authorized establishment of a two-year School of Medicine and appropriated \$250,000 planning money.
- 1967 — General Assembly renewed authorization to establish school and appropriated \$60,000 to establish School of Allied Health and Social Professions.
- 1969 — General Assembly appropriated \$375,000 for further planning and development of the two-year School of Medicine; \$500,000 to expand allied health programs; and \$1,375,000 to construct a building to house School of Allied Health and Social Professions.
- 1970 — Eight full-time medical faculty members hired; 32 part-time clinical faculty appointed.

Total Development Funds Appropriated: \$2,560,000.

- 1971 — Request to the General Assembly for \$2.6 million operating budget to enroll first Medical School class in 1972; \$670,000 to expand medical library; and \$5 million to be matched by Federal funds for a Medical Sciences Building.

"The operating budget being proposed for the next biennium, approximately \$2.6 million, seems reasonable - - adequate, and not excessive."

Wilson Memorial
Hospital
358 beds

Beaufort County
Hospital
183 beds

Lenoir Memorial
Hospital
285 beds

Pitt County Memorial Hospital
205 beds
(New \$9 million facility
authorized with 335 beds)



Edgecombe General
Hospital
127 beds

Wayne County
Memorial Hospital
344 beds

Nash General
Hospital
292 beds

CLINICAL FACILITIES

If you believe that the health needs of this Nation — and particularly this State — suffer from a severe shortage of physicians,

and if all you know about the development of a two-year School of Medicine at East Carolina University is what you read in the papers,

then we believe the message in this letter will be of interest to you.

East Carolina University has been developing a School of Medicine since 1965. Each of the last three sessions of the General Assembly (1965, 1967, 1969) appropriated funds to make this planning and development possible. Thus, the question that will come before the 1971 General Assembly is really the level of support it will provide for the next two years to complete the development of the two-year School of Medicine so that the first class of approximately 20 students may be enrolled in 1972.

The enclosed leaflet shows some of the progress we have made toward our goal. The quotes under these pictures are taken from the final report of the Liaison Committee on Medical Education of the American Medical Association — Association of American Medical Colleges dated January 28, 1971.

The report of the Liaison Committee has, in our opinion, been widely misrepresented in the public press. This letter is being sent to you because we believe you want and deserve to know the truth. If you will return the enclosed card, we will send you a copy of the complete report (it is only 18 pages long). After you have read the report, we invite you to call or write us for further information.

And, of course, if you feel the report supports our request for continued development, we would appreciate your support with members of the General Assembly who must vote on this important issue.