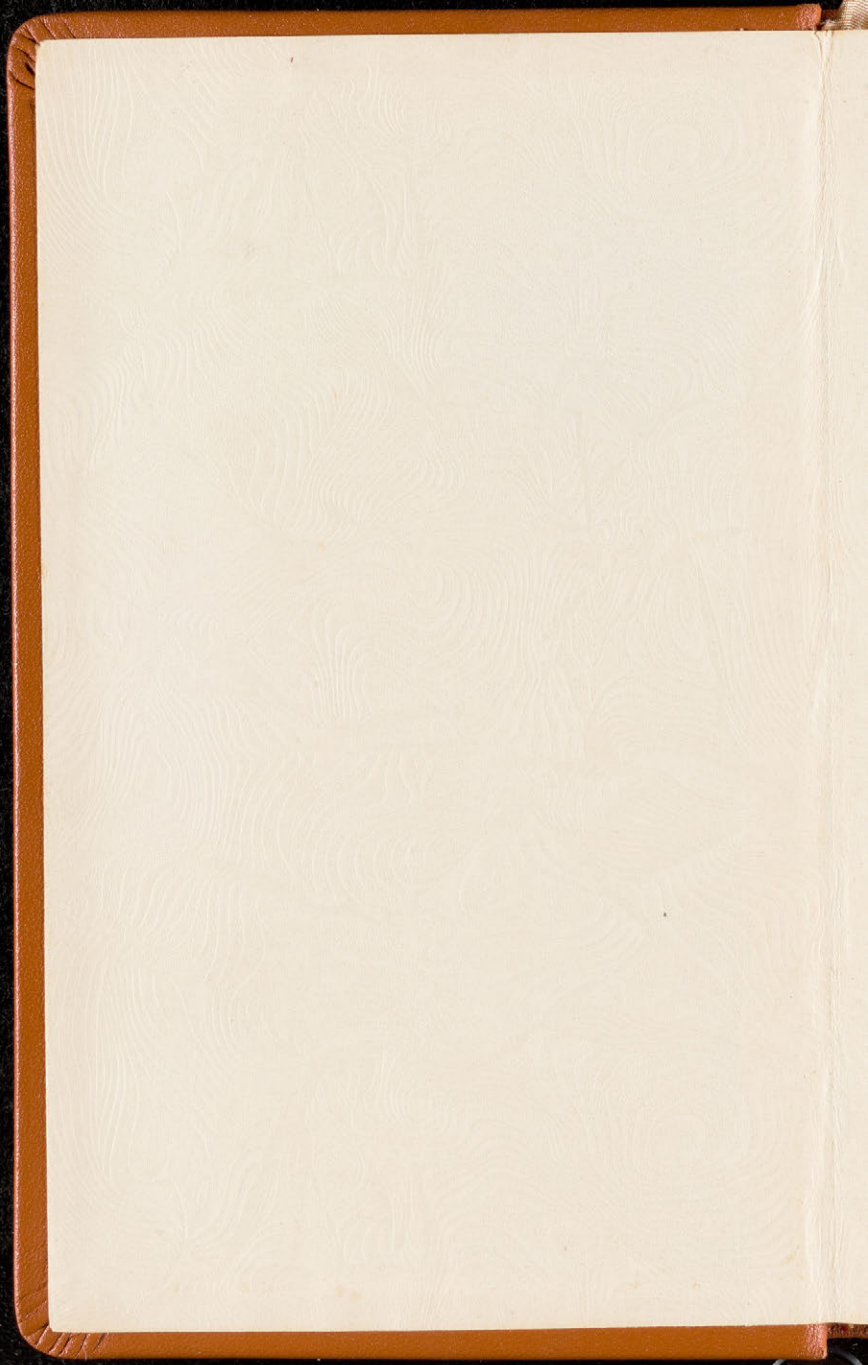


MY TRIP

LOUIS P. DAVIS JR.







TRAVEL DIARY

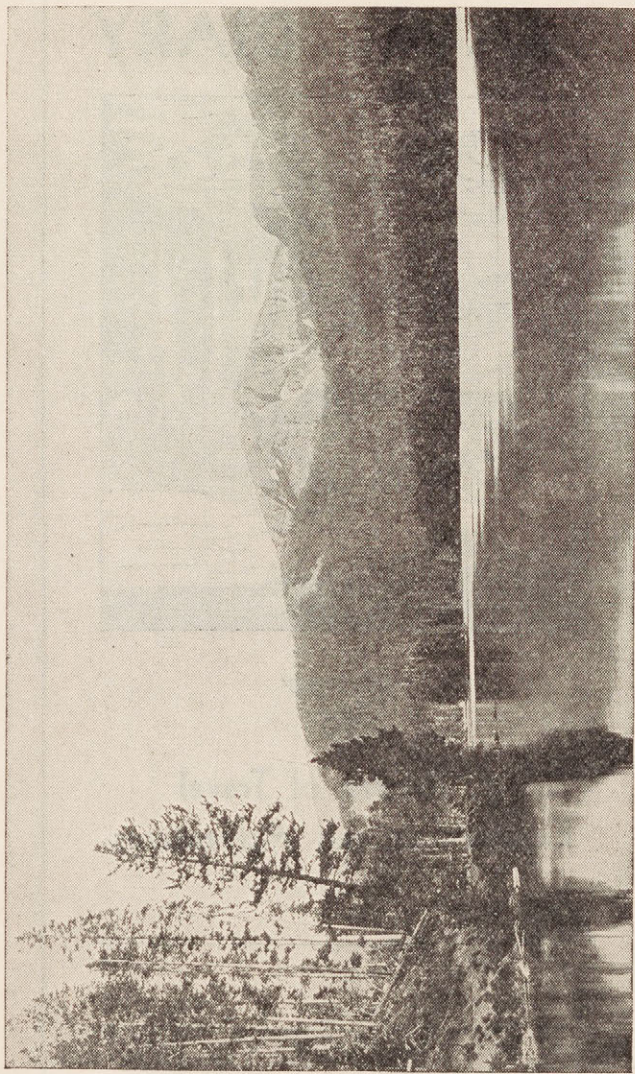


A Record of Travel Experiences and Adventures

Property of _____

© National Blank Book Co., Holyoke, Mass.

MADE IN U. S. A



Sylvan Lake and Top Notch Peak, Yellowstone National Park

COPYRIGHT HAYNES: REPRODUCED BY PERMISSION OF THE NORTHERN PACIFIC RAILWAY

CONCERNING THE ART OF TRAVELING

So much has been said and written about traveling as an art that you may easily devote as much time to planning your trip as to making it. And as your enjoyment in traveling depends so largely on freedom from anxiety over the annoying details of Where?, How?, and How Much?, no amount of planning ahead can be too much.

One little book could not begin to give all the facts you will need in order to travel wisely. But we have tried to answer a few of the questions most often asked by travelers; to suggest where the answers to all their other questions may be found; and to mention the points of common interest in the principal cities and resorts of this country. So, by making your trip easier and more interesting, we hope to add zest to the important part of the book, of which you are to be the author.

Technique.

Travel Bureaus: Complete responsibility for your trip—planning an itinerary, purchasing tickets, hotel reservations, insurance, and practically all other items here mentioned—will be assumed by a travel bureau for a nominal fee. The experienced advice of a travel agent can add greatly to the pleasure of your trip and may prevent mistakes which would cost you much more than the trifling amount you will pay him.

RR & SS These can be obtained through your travel bureau or from the **Tickets:** offices of the individual lines. In certain cities there are Consolidated Ticket Offices which represent all railroad and some steamship lines. Many banks have travel departments which purchase accommodations and render other assistance. On most transcontinental routes and many shorter lines, the following classes of tickets are available:

Summer Tourist Round-Trip Ticket: good from May to October, with unlimited stop-over privileges within that period. Saving, approximately 33% of single ticket rate to destination and return.

All-Year Tourist Round-Trip Ticket: good for nine months from purchase, with unlimited stop-over privileges within that period. Saving, approximately 10% single ticket rate.

Regular Round-Trip Ticket: good at all times; with unlimited stop-over privileges. Cost, the same as single tickets both ways.

Companies which operate rail and water lines permit the combined use of such routes within the terms of these round-trip tickets.

Validation Before the return portion of a round-trip ticket can be used. **of Tickets:** it must be "validated." This means that before starting your return journey, you take the return part of your ticket to the office of the

railroad, sign it, and have your signature acknowledged. This simple process takes but a few minutes, and should be attended to the day before you start on the return trip.

Stop Overs: If you wish to exercise the stop-over privileges which are yours in accordance with the terms of your ticket, proceed as follows: On arrival at the point of stop-over, take your ticket to the railroad ticket agent who will hold it and give you a receipt. Before resuming your trip, present your receipt to the agent and your ticket will be returned.

Extension Extension beyond the time granted by the terms of your ticket
of Time: may be had by redeeming the return portion for the price of the excursion ticket, minus the full fare to point reached and small deductions for stop-overs already made and baggage checked.

Extra Fare Between certain cities there are trains which guarantee arrival

Trains: on schedule and issue a slip with each ticket, which is redeemable at so much per hour of lateness, after the first hour, and up to a specified maximum time.

One Way From coast to coast, these generally give stop-over privileges

Tickets: at designated points, with a limit of ten days at each point. Such a ticket is handled exactly as a round-trip ticket at stop-over points.

Children's Special concessions for children are granted by some lines.

Rates: Children under five are usually carried free.

Pullman Res- These are of the following kinds: *Lower* or *Upper*
ervations: *Berth* Cost of upper, 20% less than lower.

Section: Lower and upper, or lower with upper unopened. This may be purchased for occupancy by only one person, in which case the minimum charge is one fare, the cost of the lower and one half the cost of the upper.

Compartment: A stateroom with upper and lower berths and private lavatory facilities. It may be occupied by one person only, for $1\frac{1}{2}$ or 2 fares (depending on destination) plus the cost of the compartment.

Drawing Room: A stateroom with two berths and couch, and adjoining private lavatory facilities; will accommodate three persons. When occupied by one person or by two persons, the cost is 2 fares plus the cost of the drawing room.

Reservations from any starting point can be made by phone or wire through the railroad agent in any other city or town, if you happen to be elsewhere than the point of starting.

Luggage: The new types of wardrobe hand luggage are finding more and more favor. The important point is that your luggage should fit under your berth. For this reason, the suitcase type is preferable to the kit-bag type, and the maximum dimensions are $29'' \times 14\frac{1}{2}'' \times 9\frac{1}{2}''$.

Baggage The railroad and steamship companies carry personal baggage

Checking: up to 150 pounds free of charge for ticket holders. The steamship companies do not issue receipts for baggage. To check your baggage by railroad, take your ticket to the baggage office, identify your luggage and get a receipt for it. On arrival at your destination, give this receipt to the baggage agent when you go to claim your luggage. A Baggage Trans-

fer Company will bring your trunk from the station to your hotel for a nominal fee. Merely give your name and hotel address to the baggage transfer agent who goes through the train as it approaches most important stations, or who can be found in the station where you alight. He will take your baggage check and give you the transfer company's receipt in its stead.

Credit: It is unwise to carry large amounts of currency. The American Express Company, the American Bankers' Association, some large banks, tourist companies such as Thos. Cook & Son, and some steamship companies issue travelers' checks which are accepted everywhere. These come in several denominations and are only good when signed by the payer in the presence of the person to be paid. And as the signature of the authorized owner appears on the check book, it is difficult for the checks to be used illegitimately. Should you lose your check book, notify the company which issued it and they will stop payment on the unused checks. The charge for issuing these is small—50c. or 75c. per \$100 worth of checks. The Statler Hotels (located in New York, Boston, Buffalo, St. Louis, Detroit and Cleveland) maintain a system by which a person with established credit in any of their hotels may cash personal checks at all the others.

Insurance: Accident, health and baggage insurance for the duration of your trip is not expensive and will add much to your peace of mind. Your travel bureau or your own insurance agent will gladly arrange for it.

Tipping: The tipping practice may be regretted, but it cannot be ignored. In general, the basis is 10% to 15% of the cost of the service rendered. But this basis is necessarily variable. When 10% of the cost is an inconsiderable amount, the sum must be made proportionate to the amount and courtesy of the service.

On Sea Voyages of more than a day, all tipping is done on arrival at destination. Your Dining Steward, Room Steward (or Stewardess) Deck and Bath Stewards must all be tipped according to the services which you receive, on a basis, respectively, of \$5, \$5, \$2, and \$2, for a one week's voyage. The Chief or Second Dining Steward need not be tipped unless you have had special attention with regard to table companions or private dinners. The Deck Steward may be tipped when your chair is rented or before landing.

On a Long Train Trip your porter receives approximately 10% of your pullman fare before you disembark. On a day trip he receives at least 25c. per person and more if his services warrant. On an over-night trip, a minimum of 25c. to 50c. per person. In dining cars, tipping is done at the payment of each check.

On Airships the steward should be tipped at the end of the trip, according to the length of the trip and the service rendered.

In a European Plan Hotel waiters are tipped at each meal.

In an American Plan Hotel tips are frequently given before leaving, or weekly, if your stay exceeds that period.

Head Waiters need be tipped only when special service has been requested.

Baggage Porters should receive about 10c. for each bag of ordinary size, and more whenever the service warrants.

On Board Steamer: On voyages of more than a day, dining room reservations are made through the chief dining room steward. He will usually assign you a table alone or with others, as you prefer. If there are two sittings, or shifts, the second is preferred by the late risers and late diners. Your cabin steward (or stewardess) will render any personal service necessary in case of illness. See your bath steward soon after leaving port so that he will book your bath for whatever time you want—and call you when it is ready. The deck steward should also be seen early, so as to place your chair to suit you. The rental of this and any rugs you may need is paid when the chair is given you.

On Board a Train: There are dining cars on practically all trains traveling between points 12 hours or more apart. Service is generally *à la carte*, sometimes also *table d'hôte*. On trains carrying diners, special service to your berth, compartment or drawing room can be had at regular rates plus a small fee per person.

By Air: There are bureaus which specialize in all information pertaining to air travel. In addition, the American Air Transport Association, in Chicago, or the Aeronautical Chamber of Commerce, in New York, will furnish latest information about routes and rates. As each passenger's luggage is limited in weight, light canvas luggage is most economical. Ear stoppers are sometimes used as protection against the noise of the motor, and are usually furnished on the plane. If discomfort is experienced in the ears as a result of changes of air density, this may be relieved by chewing gum or swallowing while holding the nose.

By Auto: The American Automobile Association and similar organizations plan motor tours for their members, give road information, suggest hotels and render other services, such as maintaining stations for repairs on the road.

Hotels: Reservations may be made in advance through a travel bureau, or merely by wiring from any previous stopping place. It is well, however, to have your reservation confirmed by letter or wire to you whenever time permits. At the seasonal resorts it is unwise to risk finding accommodations on arrival. And it should be remembered that even in the larger cities, a sizable convention may easily make good accommodations hard or impossible to procure. When rooms have not been reserved in advance, it is well to look at the accommodations offered you before registering..

Amusements: The office of your hotel will give you information concerning theatres, sight-seeing buses or cars for private tours. Generally, it is well to patronize standard sight-seeing companies with established routes and prices. The hotel will also direct you to golf courses which welcome visitors on payment of greens fees.

Special Information on industrial subjects can generally be obtained from the local Chamber of Commerce or Board of Trade in each city. There, also, you may get assistance in planning trips off the main lines, as well as information on such subjects as authorized guides and state regulations for hunting or fishing expeditions.

What to Take.

The question of what to take depends on so many factors that it is impossible to make one list which will fill all requirements. The following items are mentioned as a basis from which to figure your personal needs, in accordance with the season of the year; the length of your trip; and the character of your social requirements. In most hotels, laundry service can be had in 24 hours. In some, it takes only 8 or 9 hours. Dressing in the evening is becoming increasingly optional. It is generally done in the principal resorts; less in the National Parks, and is quite discretionary in most hotels in larger cities.

Clothing		Toiletries	
Men	Women	Men	Women
Travel Suit	Travel suit	Razor & blades	Comb & brush
Top coat	Topcoat	Strop	Wash cloth
Rain coat	Street dress	Styptic pencil	Soap (box)
*Golf suit	Sport dress	Shaving brush	Tooth brush
*Riding breeches	*Riding habit	Hair “	“ paste
*Riding boots	*Evening clothes	Tooth “	Cleaning cream
Sweater	Sweater	Clothes “	Vanishing “
*Evening clothes	Soft, light-weight hat	Nail “	Face powder
Dressing gown	Sport shoes	Mirror	Rouge & lipstick
Trav. slippers	Street shoes	Shaving lotion	Hairpins
Cap	Rubbers	Soap (box)	Hair net
Sport shoes	Dark dressing gown	Nail file	Talc powder
Street shoes	Travelling slippers	“ scissors	Nail file & buffer
*Bathing suit		Comb	“ scissors
Rubbers		Tooth paste	

* Indicates that the article is to be taken only if your particular program makes it a necessity.

A pair of comfortable, old shoes will be found indispensable for sight-seeing in the National Parks and other places of rustic nature.

Shirts, collars, handkerchiefs, sox and underwear will be required in quantities depending on intervals between stops of sufficient length for laundry to be done. And these accessories should be of a character to withstand miscellaneous laundries.

Medicines and First Aid

Absorbent cotton
Gauze bandage
Adhesive tape
Iodine
Laxative
Aspirin
Sodium bicarbonate (in pills)
Bismuth subsalicylate
Bromide tablets
Quinine sulphate

Wherever possible, medicines and toiletries should be in dry form.

Accessories

Sewing kit (including scissors)
Shoehorn and button hook
Shoe trees (if light in weight)
Clothes hangers (folding)
Writing case
Fountain pen
Extra eye glasses (or prescription)
Tinted glasses
Field glasses
Books
Camera and films
Playing cards

What to See

The principal cities in the United States, with population, location and points of chief interest in each.

AKRON, O. Pop. 255,040. 35 m. E of Cleveland. An example of phenomenal growth in the last twenty years. Population tripled between 1910 and 1920. **Ed.** Univ. of Akron—part of public school system.

Hist. House occupied by John Brown Old Portage Trail used by Indians in carrying canoes from Cuyahoga R. to the Tuscarawas R. on the journey from Lake Erie to the Ohio R.; marked by tablets at both ends.

ALBANY, N. Y. Pop. 127,412. On West bank of Hudson R., 145 m. N of N. Y. State capital and one of the oldest cities in the country.

ATLANTA, Ga. Pop. 270,366. 294 m. NW of Savannah. State capital; commercial and manufacturing center. The important stronghold of the South, completely devastated during the Civil War. A recreation point and golf capital. **Hist.** Battlefields, Confederate Home, Fort McPherson, Federal Prison. **Nat.** Stone Monument.

BALTIMORE, Md. Pop. 804,874. On Patapsco R., 40 m. NE of Washington. Important seaport. Industrial, commercial, railroad and educational center. A city prominent in the making of the nation's history.

Hist. Battle Monument, Federal Hill, Fort McHenry, Washington Monument, Tomb of E. A. Poe. (See Annapolis, under Resorts.) **Ed.** Johns Hopkins Univ., Goucher College for Women, Peabody Inst., Polytechnic Inst., Fed. & Civic. Court House, City Hall, Post Office, Baltimore Stadium. **Rel.** Roman Catholic Cathedral, Christ Church, Parks. Druid Hill, Clifton, Wyman. **Com.** RR stations, Lexington Mkt. Docks

BIRMINGHAM, Ala. Pop. 259,678. 95 m. NW of Montgomery. Capital and largest city in the state. Industrial and railroad center because of iron ore, limestone and coal in district.

BOSTON, Mass. Pop. 781,188. On Boston Bay, 265 m. NE of New York, second largest seaport in the country. A sight-seeing capital because it is a monument to the nation's liberty.

Hist.	Boston Common Old State House Park St. Church King's Chapel Faneuil Hall Old South Church Old North Church Griffin's Wharf Navy Yard (U. S. S. Constitution, Old Ironsides) Paul Revere's House Bunker Hill Monument Ben. Franklin's Birthplace Old Granary Burying Ground	Ed	Harvard Univ. Med. Sch. Boston Univ.
		Cul.	Public Library Museum of Fine Arts Agassiz Museum Symphony Hall Opera House
		Rel.	Trinity Church "Mother Church" of Chr. Sci.
		Gen.	Public Gardens Fenway Beacon Hill Section

See Cambridge, Lexington, Concord, Salem, Marblehead, Gloucester listed separately.

BRIDGEPORT, Conn. Pop. 146,716. On L. I. Sound, 15 m. SW of New Haven. Leading manufacturing city of Connecticut. Commercial importance dates back to the Civil War when it sent quantities of clothing and supplies to the army. During the World War, its production was tremendous and its population increased 50% in two years. Beardsley and Seaside Parks are both large and beautiful.

BUFFALO, N. Y. Pop. 573,076. At eastern extremity of Lake Erie. Industrial and railroad center; tourist stopping place en route to Niagara. **Hist.** Peace Bridge, McKinley Monument, Soldiers' Monument. **Cul.** Albright Art Gallery. **Rel.** St. Joseph's Cathedral St. Paul's Church. **Nat.** Niagara Falls, Delaware Pk., Humboldt Pk., Museum of Nat. Sciences.

CAMBRIDGE, Mass. Pop. 113,643. On Charles R. opposite Boston A residential suburb, of great historical interest. **Ed.** Harvard University, Radcliffe College. **Hist.** Washington Elm, Homes of Lowell and Longfellow. **Cul.** Fogg Museum of Art, Peabody Museum of Natural Hist., Widener Library.

CAMDEN, N. J. Pop. 118,700. On Delaware R. opposite Philadelphia. Manufacturing town.

CANTON, O. Pop. 104,906. 59 m. SSE of Cleveland. Rapidly growing manufacturing center, surrounded by rich farm lands. Manufacture of steel and its products of first importance. **Hist.** Home of President McKinley. His dwelling, the scene of the "front porch" campaign, now used as a hospital annex. McKinley's tomb.

CHATTANOOGA, Tenn. Pop. 119,798. On Tenn. R. 151 m. SE of Nashville. Iron, steel, lumber and cotton industries. Farming and fruit-growing district. All year resort. A city with a tradition of courage and heroism. **Hist.** Civil War battle-fields, Missionary Ridge, Ft. Oglethorpe, National Cemetery. **Nat.** Cave Springs, Lookout Mt., Point Pk., Point Rock, Umbrella Rock. **Ind.** Manufacturers' Exhibit.

CHICAGO, Ill. Pop. 3,376,438. On Lake Michigan. Second largest city in the U. S., the world's greatest railroad center, its largest grain market, its principal lumber yard and its biggest abattoir. More telephones, more mail, more art and music students and more parks than any other city in the country. **Ind. & Com.** The "Loop" district, Mail Order Houses, Stock Yards, Gas Co., Bond House, Tribune Bldg., International Harvester Co., Pullman Co., U. S. Steel Corp., Air Port. **Res.** Lake Shore Drive, Suburbs: Evanston, Glencoe, Hubbard Woods, Winnetka, Kenilworth, Wilmette, Highland Pk., Sheridan Road. **Parks.** Jackson, Washington, Douglas, Garfield, Humboldt, Lincoln, McKinley, Sheridan, Jefferson, Municipal Pier. **Cul.** Art Inst., Field Museum, Public Library, Arm Inst., Opera House. **Rel.** Tallest church. **Ed.** Univ. of Chicago, Northwestern Univ., Loyola, DePaul.

CINCINNATI, O. Pop. 451,160. On Ohio R. 313 m. SW of Pittsburgh. From pioneer beginnings to a city of industry, commerce, railroads and music. **Ed.** Univ. of Cincinnati, Xavier College. **Cul.** Art Museum, Art Academy, Music Hall. **Nat.** Zoological Gardens, Eden Pk., Mt. Storm Pk., **Ind. & Com.** Rockwood Pottery Plant, Sterling Glass Plant, Municipal Air Port.

CLEVELAND, O. Pop. 900,429. On Lake Erie. Industrial and railroad center; a remarkable example of civic, commercial and cultural progress. **Hist.** Tomb of Garfield, Western Reserve Historical Museum. **Cul.** Case School of Applied Science, Art Museum, Medical Center, Inst. of Music. **Fed.** Court House, Federal Building. **Eng.** 2 viaducts.

COLUMBUS, O. Pop. 290,564. On Scioto R. 120 m. NE of Cin. State capital; commercial, industrial and railroad center. Farm district. **Ed.** Ohio Univ. **Fed.** Ft. Hayes (formerly Columbus barracks) Headquarters of the V corps area of the U. S. Army.

CONCORD, Mass. Pop. 7,491. 20 m. WNW of Boston. Historic town reached by sight-seeing busses from Boston. **Hist.** Homes of Emerson, Hawthorne and Louisa Alcott; Thoreau's hut. Minute Man Statue and Sleepy Hollow Cemetery.

DALLAS, Tex. Pop. 260,475. On Trinity R. 220 m. NNW of Houston. Important industrial and commercial center. Largest inland cotton market in the country and SW headquarters of large oil companies. Seat of Federal Reserve Bank of 11th District.

DAYTON, O. Pop. 200,982. On Miami R. 60 m. NNE of Cin. Manufacturing city. **Hist.** Newcomb's Tavern, National Soldiers' Home, Home of Wright Brothers. **Ind.** National Cash Register plant.

DENVER, Col. Pop. 287,861. State capital. 922 m. W of St. Louis, Commercial city. Health resort and starting point for numerous tourist trips. **Fed. & Civic.** U. S. Mint, Civic Center, State Capital, Ft. Logan, **Cul.** Public Library, Auditorium. **Nat.** City Pk. and trips to Georgetown Loop, Switzerland Trail, Lookout Mt., Platte Canyon, Mt. Morrison.

DES MOINES, Ia. Pop. 142,559. State capital on Des Moines R. 340 m. W of Chicago. In the heart of the corn belt and surrounded by a

sizable coal field. **Hist.** Fort Des Moines. **Ed.** Des Moines Univ., Drake Univ. **Govt. & Cul.** State capital. State Historical, Memorial and Art Bldg., State Library.

DETROIT, Mich. Pop. 1,568,662. On Detroit R., 50 m. NE of Toledo. The world's automobile manufacturing center. Within easy access to numerous inland lake resorts. **Ind.** Ford Plant, Ford Air Port, Ford Experimental Labs., General Motors Co., Fisher Body Co., Burroughs Adding Machine Co., Packard and Dodge Motor Cos. **Nat.** Belle Isle Pk., Put-in-Bay, St. Clair Flats.

DULUTH, Minn. Pop. 101,463. On W end of Lake Superior, 156 m. NNE of St. Paul. Industrial, commercial and mining center. An essentially modern city with particular resort advantages. **Parks:** Lincoln, Morgan and Chester, Boulevard Dr., Aerial Bridge. **Elec.** inclined RR to Minnesota Pt. **Com.** Docks.

EL PASO, Tex. Pop. 102,421. 510 m. WNW of Austin. Cattle raising, mining, and an important military post. Contrasting atmospheres of Old Spain and the primitive Aztecs. **Hist.** Ruins of Fort Sheldon, old adobe mission at Juarez. **Nat.** Picture Rocks, Mt. Franklin.

ERIE, Pa. Pop. 115,967. 148 m. N of Pittsburgh. Industrial and commercial.

EVANSVILLE, Ind. Pop. 102,249. On Ohio R. 195 m. below Louisville. Rich mining and agricultural section. Completion of Wabash and Erie Canal in 1853 gave great stimulus to its growth.

FALL RIVER, Mass. Pop. 115,274. 18 m. SE of Providence. The largest cotton manufacturing city in the U. S.

FLINT, Mich. Pop. 156,492. 70 m. NW of Detroit. The third city of its state in size and second in value of manufactures. Second in the world in production of automobiles. **Ind.** Several subsidiaries of General Motors, including Buick and Chevrolet plants.

FT. WAYNE, Ind. Pop. 114,946. On Maumee, St. Joseph and St. Mary Rs. 148 m. ESE of Chicago. Railroad center; agricultural and lumber region. Manufacturing of machinery and equipment, pianos and organs.

FT. WORTH, Tex. Pop. 163,447. 30 m. W of Dallas. The metropolis of the oil fields and cotton producing area of Texas. A large portion destroyed by fire in 1909. Municipal Air Port.

GARY, Ind. Pop. 100,426. 26 m. SE of Chicago. A city created by the U. S. Steel Corp. in 1906 and named for Elbert H. Gary, eminent jurist and for many years chief executive of the U. S. Steel Corp. The industries, chiefly subsidiaries of U. S. Steel, have made it a city of over 100,000 in little more than 20 years. Famous school system, the "Gary plan."

GRAND RAPIDS, Mich. Pop. 168,592. On Grand R. 152 m. NW of Detroit; second city of its state in size; furniture-manufacturing capital of the world. Numerous, well-directed public parks and playgrounds.

HARTFORD, Conn. Pop. 164,072. State capital, on Connecticut R. Trading center and market for agricultural products of the country; but

insurance is its principal business. **Hist.** Old State House. **Govt.** State Capital, State Library, Supreme Court House. **Cul.** Hartford Library, Junius Spencer Morgan Memorial. **Ed.** State Sch. for Blind, American Sch. for Deaf. **Rel.** First Church of Christ, Roman Catholic Cathedral, Trinity College, Hartford Theological Seminary, St. Thomas' Seminary.

HOUSTON, Tex. Pop. 292,352. 49 m. NW of Galveston. Principal industrial center of southern Texas and one of the leading gulf ports. Home-grown strawberries in February and year 'round roses.

INDIANAPOLIS, Ind. Pop. 364,161. State capital on White R. 109 m. NW of Cincinnati. The population center of the U. S., in a grain district, on a railroad terminal, and on the world's greatest motor speedway. **Ed.** Butler Univ., John Herron Art Inst., Public Library. **Fed. & Civic.** Federal Bldg., City Hall, Amer. Legion Hdqtrs. **Nat. & Rec.** Broad Ripple Park, Garfield Park, Municipal Golf Course, Tourist Camp.

JACKSONVILLE, Fla. Pop. 129,549. On the St. John's R. 155 m. S by W of Savannah. Commercial seaport. Tourist gateway to Fla.

JERSEY CITY, N. J. Pop. 316,715. On Hudson R. opposite New York City. The second city in the state. Industrial, commercial and shipping. Prominent in Revolutionary history.

KANSAS CITY, Kan. Pop. 121,857. On Missouri R. adjacent to Kansas City, Mo., Chiefly packing industry.

KANSAS CITY, Mo. Pop. 399,746. On Missouri R. 283 m. W by N of St. Louis. Close to the geographic center of the country and one of its great commercial gateways. It rates first in distribution of agricultural implements; second in stock-yards; and fifth in grain elevator capacity in all the U. S. But the pioneer spirit is still there. **Cul.** Nelson Art Gallery, Art Institute, Liberty Memorial. **Res. & Parks.** Country Club District, Cliff Dr., Swope Pk., Penn Valley Pk. **Ind.** Stock-yards, Live Stock Exchange, Railroad station, Amer. Royal Bldg.

KNOXVILLE, Tenn. Pop. 105,802. On Tennessee R. 180 m. E of Nashville. Zinc, copper, coal, iron and marble. Tobacco, fruits and some grain. A principal trading center and shipping port for a large area. **Ed.** Uni. of Tennessee, Knoxville College (Negroes).

LEXINGTON, Mass. Pop. 9,429. 11 m. WNW of Boston. Historic, residential town. Reached by sight-seeing bus from Boston. **Hist.** Buckman Tavern, Hancock-Clarke House, Minute Man Statue.

LONG BEACH, Cal. Pop. 142,032. 20 m. S of Los Angeles, California's Miami.

LOS ANGELES, Cal. Pop. 1,238,048. 345 m. SE of San Francisco. Fruit-growing district; resort, motion picture and convention center. 80 years from an adobe-hutted pueblo to the metropolis of the West. **Res.** Pasadena, Beverly Hills, Los Feliz Heights section, Orange Grove Ave., **Rel.** Aimee Semple McPherson Temple, Mission Church, **National Districts:** China Town, Spanish settlement. **Ind. & Agri.** Hollywood studios, Orange, Lemon and Walnut Orchards. 1-day trips to Catalina Islands, San Fernando Valley and Riverside.

LOUISVILLE, Ky. Pop. 307,745. On Ohio R. 130 m. SW of Cincinnati. Tobacco market, railroad center. Industry and commerce have not marred its Southern charm. **Hist.** Zachary Taylor Homestead and grave; Home of Louis Philippe before he was King of France. **Ed.** Univ. of Louisville. **Eng.** Locks and hydroelectric power plant. Trips to: Mammoth Cave, Lincoln's Birthplace, Cumberland Falls, Kentucky Natural Bridge.

LOWELL, Mass. Pop. 100,234. 25 m. N by W of Boston. An important center of the cotton and woolen industries. Named for man who first brought under one roof all processes of converting cotton into cloth.

LYNN, Mass. Pop. 102,320. On North shore of Massachusetts Bay, 10 m. NE of Boston. The principal commerce of the harbor is incoming coal; shoe manufacturing most important industry.

MEMPHIS, Tenn. Pop. 253,143. On Mississippi R. 209 m. WSW of Nashville. Industrial, commercial and railroad center. City proper, 50 ft. above high-water mark. **Nat.** 1,200 acres of parks. Largest free zoological garden in U.S.

MIAMI:

On Biscayne Bay 366 m. S of Jacksonville.

MIAMI BEACH, Fla. Pop. 110,637. In Biscayne Bay 4 m. E of, and connected by causeway with Miami. Fruit-growing section. Winter and summer resort. A social center and a glorious playground.

MILWAUKEE, Wis. Pop. 578,249. On Lake Mich. 90 m. N of Chicago. Commercial and industrial. Popular as a summer resort because of its situation on high bluffs overlooking Milwaukee Bay. Fishing and bathing facilities.

Ed. Downer College
Marquette Univ.

Civic City Hall
Municipal Auditorium
Lincoln Memorial Bridge

Cul. Public Library
Museum
Layton Art Gallery

Rel. St. John's Cathedral

Ind. Dock on the lake
Freight Terminal
Iron and steel plants
Machinery, Leather, Soap
Shoes, Motor-cycles
Car-body factories

Parks. Juneau
McKinley Beach
Bradford "
Mitchell Pk.
Washington Pk.
Court of Honor (a pkway)

MINNEAPOLIS, Minn. Pop. 464,356. On Mississippi R. adjoining St. Paul; commercial and railway center. Summer residential city. **Hist.** Fort Snelling. **Ed.** Univ. of Minnesota. **Nat.** Falls of St. Anthony, Minnehaha Falls, Lakes Minnetonka, Harriet, Ceder, Calhoun, Nokomis and Lake of the Isles.

NASHVILLE, Tenn. Pop. 153,866. State capital on Cumberland R. Industrial, commerce! and educational center. **Hist.** Confederate Home, Andrew Jackson's Home.

NEWARK, N. J. Pop. 442,337. On Passaic R. 9 m. W of New York

City. Largest city of New Jersey; important center of rail, sea and air transportation; one of the country's leading manufacturing cities. Hist. Trinity Episcopal Cathedral. Govt. County Court House. Cul. Library, Museum. Ed. Newark Institute of Arts & Science (an extension of New York University), State Normal School, Newark College of Technology, N. J. College of Pharmacy, N. J. Law School.

NEW BEDFORD, Mass. Pop. 112,597 65 m. S of Boston. Cotton, yarn and fishing industries. An old sailing port, still very salty.

NEW HAVEN, Conn. Pop. 162,655. On Long Island Sound and the Quinnipiack R. Industrial and educational town. Ed. Yale Univ.

NEW ORLEANS, La. Pop. 458,762. On Mississippi R. 100 m. above its mouth. The second U.S. seaport. Sugar, rice and cotton growing; and an old-world charm found nowhere else in America. A carnival at the beginning of Lent that is a tradition and a delight.

Hist. Chalmette Battle-field

Old French Quarter

Old Spanish Fort

Cathedral

Ed. Tulane University

Cabildo

Loyola University

Jackson Sq.

Pks. & Rec.

Old Absinthe House

Pontchartrain Blvd.

Old Mint

" Lake

French Market

Jefferson Race Track

Old St. Louis Cemetery

Audubon Pk.

Famous Restaurants

City Pk.

Antoine's

The Harbor Trip

Mme Begue's

Galatoire's

La Louisiane

NEW YORK, N. Y. Pop. 6,930,446. Five boroughs constituting the largest city in the world, both in area and population. The country's principal center of finance, industry, commerce, education, art and amusement. Everything is superlative; the biggest city, the tallest buildings, the most people, of more nationalities; the most money and the most fun. Still there are many who avoid superlatives and believe that "good things come in small packages."

Hist. N. Y. Historical Society

National Districts

Statue of Liberty

The Ghetto

Trinity Church and Graveyard

Harlem

Van Cortlandt Mansion and Pk.

China Town

Washington Arch

Little Italy

Roosevelt House

Hall of Records

Eng. Brooklyn Bridge

Grant's Tomb

Manhattan "

Fraunces Tavern

Bear Mt. "

Cleopatra's Needle

Queensborough "

Bowling Green

Hudson Riv. "

Soldiers and Sailors' Monument

Holland Tunnel

Jumel Mansion

Parks and Rec.

Battery Park
 Bronx Pk.
 Botanical Garden
 Zoological "
 Central Pk.
 Polo Grounds
 Yankee Stadium

Ind. & Com.

Chamber of Commerce
 Curb Market
 Grand Central Sta.
 N. Y. Stock Mkt.
 Penn. Station
 Post Office
 Produce Exchange
 Wall St. and District.

Cul. & Rel.

Amer. Geographic Society
 Amer. Museum of Nat. History
 Aquarium
 Carnegie Hall
 Cathedral of St. John the Divine
 College of the City of N. Y.
 Columbia University
 Cooper Union
 Fordham Univ.
 Grace Church
 Metropolitan Museum of Art
 Metropolitan Opera House
 Morgan Galleries
 Medical Center
 N. Y. Public Library
 N. Y. Univ. Hall of Fame
 St. Paul's Cathedral
 St. Paul's Chapel
 Russian Cathedral
 Temple Emanu El

Com. Buildings: Those marked with asterisks have observation platforms or other special features open to the public.

American Radiator
 Bank of the Manhattan Co.
 Bowery Bank

Res.

Fifth Ave.
 Gramercy Pk.
 Park Ave.
 Riverside Dr.
 Washington Sq.

Shopping

Fifth Ave.
 Madison Ave.
 57th Street
 Columbus Circle

Fed. & Civic

City Hall
 County Court House
 Custom House
 Ellis Island
 Municipal Bldg.
 U. S. Navy Yard
 U. S. Sub Treasury
 Appellate Division
 of Supreme Court

*Chanin
 *Chrysler
 Empire State

Equitable
500 Fifth Ave.
Flatiron
Graybar
Metropolitan Life Ins. Co
New Madison Sq. Garden

*News
N. Y. Life Ins. Co.
Telephone Co. (Vesey St.)
Singer
*Woolworth
*Western Union

NORFOLK, Va. Pop. 129,710. 80 m. SE of Richmond. The second city and the chief seaport of its state. Tourist headquarters. Some resort attractions because of proximity to Virginia Beach, Newport News and Cape Henry. Fed. Navy Yard, Marine Hospital. Rel. Christ Church Parks. Ocean View, Lafayette.

OAKLAND, Cal. Pop. 284,063. On E side of San Francisco Bay, 7 m. from San F. Residential city and tourist center. Many travelers from the East are surprised to find that railway routes to San F. actually end at Oakland. But your rail ticket includes the trip across the bay to San Francisco. The City Hall is a landmark. The homes and parks around Lake Merritt are famous for luxury and beauty.

OKLAHOMA CITY, Okla. Pop. 185,389. 300 m. SW of Kansas City, Mo. Lots of meat packing and oil welling to work at and Belle Isle Park and Lake to play at.

OMAHA, Neb. Pop. 214,006. On Missouri R. opposite Council Bluffs, Iowa. Stock-Yards, packing houses, railroads. 19 parks, Ft. Omaha and Winnebago Reservation. Ft. Calhoun on site of old Ft. Atkinson, where Lewis and Clarke had their little chat with the Pawnees.

PATERSON, N. J. Pop. 138,513. 13 m. N of Newark. The principal silk manufacturing center of the country. Originated in 1791 by the incorporation of the Society for Establishing Useful Manufactures.

PHILADELPHIA, Pa. Pop. 1,950,961. On Del. and Schuylkill Rs. 87 m. SW of New York City. The first national capital and the residence of the first president of the U. S. A truly historic spot which is also the third largest city in the U. S. A cultural and social stronghold, of which the visible proof is in the surrounding suburbs.

Hist. Congress Hall

Independence Hall and the
Liberty Bell

Spot where Ben Franklin
flew the most famous kite

Franklin's grave

Betsy Ross' House

Old Quaker Meeting House

Statue of William Penn

Valley Forge (all day trip from

Philadelphia)

Res. Suburbs: Germantown, Merion, Ardmore, Haverford, Villanova and Bryn Mawr.

Ed. & Cul

Univ. of Penn.

Girard College

Bryn Mawr College

Academy of Fine Arts

Washington Memorial Chap.

Philadelphia Symphony

Fed. U. S. Mint

League Isl. Navy Yd.

Nat. & Rec.

Fairmount Pk.

Willow Grove Pk.

PEORIA, Ill. Pop. 104,969. On Illinois R. 160 m. SW of Chicago In the center of the corn belt and of a vast coal field. A great shipping and distributing point and an important manufacturing and trading center.

PITTSBURGH, Pa. Pop. 669,817. On Ohio R. at the junction of the Alleghany and Monongahela Rs. Enough history to please all visitors and enough manufacturing and commerce to make Pittsburgh the important point in iron, steel and glass industries. Enough culture and science to maintain the Univ. of Pittsburgh and Carnegie Tech. Enough money to out-million the reserve of the Bank of England.

Hist. Block House

Memorial Hall

Ed. & Cul. Pittsburgh Univ.

Carnegie Tech.

" Library

" Museum

Ind. & Com. Heinze's (57) Factory

U. S. Steel

Baum Blvd. (Auto center) **Civic Center**

Bottle, Cork, Aluminum factories.

Nat. Mt. Washington

Phipps Conservatory

Res. & Parks. Oakland

Sewickley

Millionaire Row

Beachwood

Schenley

Highland

PORTLAND, Ore. Pop. 301,815. On Willamette R. 12 m. from its mouth and 100 m. from the ocean. Shipping of lumber and manufacturing of much that is made therefrom. Iron and steel and wood. But despite all this serious business, it is known as the City of Roses because of a yearly festival which makes it a bower of beauty. **Hist.** Columbia R. Highway (the drive which follows the old Oregon trail). **Nat.** Multnomah Falls, Council Crest, Sunken Gardens. **Parks.** The Oaks, Washington, China Town.

PROVIDENCE, R. I. Pop. 252,981. State capital on Narragansett Bay, 44 m. SSW of Boston. A busy manufacturing and business city which serves also as a sort of turnstile to the numerous resorts along the bay. **Hist.** Old State House, Market Bldg., First Baptist Church, The Slate (where Roger Williams landed). **Ed.** Brown Univ.

READING, Pa. Pop. 111,171. On the Schuylkill R. 58 m. NW of Phila. Noted as Pennsylvania's third industrial city and for the cultivation of rare peonies and irises. **Ed.** Penn. State College and Univ. of Penn. (Extensions); Schuylkill College. **Cul.** Public Library, County Historical Society, Museum and Art Gallery.

RICHMOND, Va. Pop. 182,929. State capital on James R. 97 m. S by W of Washington. The old capital of the Confederacy guards its memories and its relics carefully. **Hist.** Homes of: Jefferson Davis, Robert E. Lee, John Marshall and others. Capitol Square, Valentine Museum, Confederate Museum, National Cemetery, Battle-Fields, Confederate Memorial Inst., Confederate Soldiers' Home. **Cul. & Rel.** Richmond Univ., Medical College of Va., St. Paul's Church, St. John's Church, Monumental Church, Sacred Heart Cathedral, William Byrd Park. 1-day trip to: Williamsburg, Jamestown and Yorktown.

ROCHESTER, N. Y. Pop. 382,132. On Genesee R. 75 m. N of Buffalo. A model city which, in less than a century, has become a leader in industry, education and music, due largely to the public-spiritedness of one citizen. **Ed.** Univ. of Rochester, Rochester Theological Seminary, St. Bernard's Theological Seminary, Rochester School of Optometry, Adthenaeum and Mechanics' Institute, Music School. **Cul.** Auditorium. **Com.** Eastman Kodak Co. Extensive Park System.

ST. LOUIS, Mo. Pop. 821,960. On Mississippi R. 20 m. below the mouth of the Missouri. Once a large brewing community, then a big dealer in hides and a considerable iron ore market. Later, a steel center and then largely dependent on river commerce. Since, a RR. center, and always a resourceful, progressive city.

Ed. Washington Univ.
St. Louis Univ.

Cul. Art Museum
New Coliseum
St. Louis Symphony

Rel. Old Cathedral

Park & Rec. Forest Pk.
Shaws Garden
Tower Grove Prk.
Municipal Theatre

Hist. Old Court House
Station Blocks
River Boat Trips
Slave Market
Jefferson Memorial
(Lindbergh Trophies)

Eng. & Com. Mississippi Bridges
St. Louis Air Port

ST. PAUL, Minn. Pop. 271,606 State capital and twin city of Minneapolis. Built on 7 hills and therefore known for its views as well as for its industrial activity. State capital. **Nat. & Rec.** Indian Mounds, Cave of the Great Spirit, Wildwood Pk., Como Pk. (Jap. Gardens), White Bear Tower, Minn. State Fair Grounds. **Ind.** Govt. Dam, Ford Assembling Plant.

SALT LAKE CITY, Utah. Pop. 140,267. State capital, 500 m. W of Denver. Agriculture, mining and Mormons. Climatically excellent for a health resort. **Hist.** Pioneer Mountain. **Rel.** Temple Square, Beehive House, Amelia Palace, Brigham Young's Grave. **Fed.** Ft. Douglas. **Nat.** Great Salt Lake (18 m. from city), warm and Hot Sulphur Spring, Salt Lake Valley (first irrigated land in America). **Ind.** Bingham Copper Mines.

SAN ANTONIO, Tex. Pop. 255,040. 70 m. SW of Austin on the San Antonio R. Farming country, some resort and much tourist business. **Hist.** The Alamo, San Fernando, Four Missions. **Fed.** Fort Sam Houston. **Nat.** Hot. Wells, Ferrell Well, Medina Lake (and Dam).

SAN DIEGO, CAL. Pop. 147,995. On the San Diego Bay 126 m. SSE of Los A. A great deal of fruit shipping and some history, though its real growth began with the Exposition in 1915. A combination of old and new California. **Hist.** Old Town, Old Spanish Lighthouse.

Ed. Theosophical Inst.
Nat. Balboa Pk.
Mission Hills

Nat. Cabrillo Canyon
Imperial Heights
Golden Hill

Lookout Pt.
Fed. Marine Base
Naval Training Station

Ind. San Diego Air Port
Buildings of Panama-Pacific
Exposition

SAN FRANCISCO, Cal. Pop. 634,394. The commercial metropolis of Cal. On San F. Bay. Its magnificent harbor is the gateway to Australia, Hawaii, the Phillipines and the Orient. Reduced to smouldering waste by earthquake (never mentioned) and fire in 1906 and since rebuilt into the Capital of the Far West

Hist. Mission Dolores
Presidio (Military Reservation Pk.)

Ed. Leland Stanford Jr. Univ.
Univ. of Cal. (at Berkeley)

Fed. & Civ. U. S. Mint

Parks & Nat. Golden Gate Pk.

Exposition Grounds

(Seal Rocks)

Angel Island (Quarantine
station)

La Honda (Redwood
trees)

Alcatraz Isl. (Lighthouse
and military prison)

Ocean Drive

Mare Island (Navy yard)

Twin Peaks

Civic Center

Lincoln Pk.

Ocean Beach

Res. Berkeley (Suburb)

SCRANTON, Pa. Pop. 143,433. 130 m. N of Philadelphia. The metropolis of the anthracite coal region of N. E. Penn., which contains nearly all the anthracite in the U. S. **Ed.** St. Thomas College, Marywood College for Women. Extension Centers of U. of Penn. and Penn. State College. International Correspondence Schools, Woman's Institute, Municipal Recreation Bureau and numerous parks.

SEATTLE, Wash. Pop. 365,583. On Puget Sound, 700 m. N of San F. Railroad and steamship terminal. Shipping and more shipping. Fishing and lumbering. Many trips to near-by sights. **Ed.** University of Washington. **Nat. & Rec.** Lakes: Washington (canal locks) Green, Union, Salmon Bay, Loyal Heights, Pioneer Place. **Parks.** Mt. Baker, Leschi, Madrona, Woodland (aquarium). **Fed.** Fort Lawton. **Ind.** Public Markets, Seattle Cedar Lumber Co., Hanford St. Terminal.

SOMERVILLE, Mass. Pop. 103,908. On the Mystic R. adjoining NW section of Boston. The first ship built in Mass. was launched here in 1631. Rich in Revolutionary history. A considerable manufacturing city, but principally a residential suburb.

SOUND BEND, Ind. Pop. 104,193. On the St. Joseph R. 86 m. E by S of Chicago. **Ed.** Notre Dame School. **Rel.** Sacred Heart Church. **Hist.** Pierre Navarre Log Cabin, **Civic.** Court House.

SPOKANE, Wash. Pop. 115,514. On the falls of Spokane R. 50 m. from its mouth. Some industry and an army post. Agricultural, lumber and mineral resources and a great deal of scenery. **Ed.** Washington State College (at Pullman). **Fed.** Fort Wright. **Nat. & Parks.** Grand Coulee, Mt. Spokane, Medical Lake, Cannon Hill, Manito Pk., Brown's Addition, Deer Pk., Spokane Falls.

SPRINGFIELD, Mass. Pop. 149,900. On Conn. R. 98 m. W by S of Boston. Industrial and commercial center. **Hist.** U. S. Arsenal, established by Continental Congress, U. S. Armory, founded by Washington in 1789. **Govt.** Court House, Municipal Group (auditorium and administration building). **Cult.** Art Museum, Science Museum, City Library. **Ind. and Com.** Union RR Station, Smith & Wesson Revolver factory, Rolls Royce and Westinghouse Electric plants.

SYRACUSE, N. Y. Pop. 209,326. On Onondaga Lake 125 m. W of Albany. A beautiful site, surrounded by rich agricultural country. Development due largely to the salt industry; as it was for many years the principal source of salt supply in this country. **Govt.** County Court House. **Cul.** Public Library. **Rel.** Cathedral of the Immaculate Conception, First Baptist Church—with hotel built around and above the church.

TACOMA, Wash. Pop. 106,817. On Puget Sound 35 m. S of Seattle. A lumber capital and the stopping place for visitors to Mt. Tacoma (Ranier). **Fed.** Fort Lewis. **Nat. and Rec.** Pt. Defiance Pk., Wright's Pk., Scenic Stadium Way, Waterfront Drive, Valley of the Mt. Hood Canal, Harbor Trip. **Ind.** Lumber plants.

TAMPA, Fla. Pop. 101,161. On Tampa Bay. Tobacco and resort sections. Ybor city, close by, has lots of Spanish atmosphere.

TOLEDO, O. Pop. 290,718. On Maumee R. 8 m. from Lake Erie. Railways, oil and gas. Pleasant river excursions. **Hist.** Soldiers' Memorial. **Nat. and Rec.** Zoological Gardens, Toledo Beach.

TRENTON, N. J. Pop. 123,356. State capital, 30 m. NE of Philadelphia, at the head of the Delaware R. navigation. Manufacturing town. **Hist.** Washington's crossing. Revolutionary barracks. Battle Monument. "Woodland" "The Hermitage." **Govt.** State House. **Cul.** State Library. **Ed.** State Normal School, State School for the Deaf. Near by: Princeton.

TULSA, Okla. Pop. 141,258. 117 m. NE of Oklahoma City. Manufacturing town. The oil capital of the world. **Ed.** Univ. of Tulsa.

UTICA, N. Y. Pop. 101,740. 95 m. WNW of Albany, Industrial and commercial; agricultural region. 1/3 of country's knitted wear; much cotton cloth and cotton products. Splendid park system.

WASHINGTON, D. C. Pop. 486,869. The nation's capital, on the Potomac R. 40 m. S of Baltimore. Sixty-two square miles of fine tradition, legislative and judicial machinery, diplomacy and classic architecture.

Fed.	Capitol	Dept. of:	
	Senate Chamber	State	Agriculture
	House of Representatives	War	Interior
	Supreme Court Room	Navy	Post Office
	Senate and House Offices	Commerce	Justice
	White House		
	Library of Congress	Treasury	

Bureau of Engraving & Printing
Govt. Printing Office
Interstate Commerce Comm.

Nat. Botanical Gardens
National Zoo
Potomac Pk.
Rock Creek Pk.

Army and Navy Naval Observatory
Navy Yard
Soldiers' Home
Pension Office
Marine Barracks
Washington Barracks

Hist. Fords Theatre
Washington Monument
Lincoln Memorial

Cult. Georgetown Univ.
Smithsonian Inst.
Corcoran Art Gal.
Army Medical Museum
Pan-American Union

Near by

Alexandria
Great Falls
Mt. Vernon
Arlington Cemetery
Fort Myer
Franciscan Monastery
Annapolis

WATERBURY, Conn. Pop. 101,025. On the Naugatuck R. 21 m. NNW of New Haven. Manufacturing town. Center of the brass industry. Makers of first inexpensive watches.

WICHITA, Kansas. Pop. 111,110. On the Arkansas R. 160 m. SW of Topeka. Agricultural and stock-raising district. Oil center. Second city of the state. Commercial, financial and industrial metropolis of Southern Kansas and Northern Oklahoma.

WILMINGTON, Del. Pop. 106,597. On Del. R. 28 m. SW of Phila. Principally a duPont plant, a battle-field and an old church. Hist. Brandywine Creek. Old powdermill. Rel. Sweeds Church.

WORCESTER, Mass. Pop. 195,311. On Blackstone R. 44 m. WSW of Boston. A busy manufacturing town, once a training ground for the Revolution. Two miles away is Lake Quinsigamond, a summer resort.

YONKERS, N. Y. Pop. 134,646. 15 m. from N. Y. An important manufacturing town and a popular residential suburb of N. Y. Cul. and Hist. Philipse Manor Hall, now maintained as a state museum.

YOUNGSTOWN, O. Pop. 170,002. On the Mahoning R. 60 m. ESE of Cleveland. The center of the second largest iron and steel district of the country. In fine agricultural region, with considerable mineral resources. Cul. Stambaugh Memorial Auditorium. Reuben McMillan Free Library. Butler Art Institute.

Resorts

W, S, and H, indicate, respectively, that the place is by nature principally a Winter, Summer or Health resort. When no season is specified, climate is equally favorable all year.

FAIRHOPE, Ala. 13 m. SE of Mobile. W

- MOBILE, Ala.** At mouth of Mobile R. 30 m. N of Gulf of Mex. W
- HOT SPRINGS, Ariz.** Between Prescott and Phoenix.
- PHOENIX, Ariz.** State capital, 226 m. NE of Yuma, Medicinal Springs W and H.
- PRESCOTT, Ariz.** 105 m. N by W of Phoenix. High Altitude. S
- TUCSON, Ariz.** 300 m. W of El Paso. Old fort ruins, missions and painted rocks.
- EUREKA SPRINGS, Ark.** 85 m. SW of Springfield, Mo.
- HOT SPRINGS, Ark.** 56 m. SW of Little Rock. Celebrated baths given under government supervision. H
- ANDERSON SPRINGS, Cal.** 5 m. from Middletown. Medicinal Springs. H
- AVALON, Cal.** On Santa Catalina Is. 50 m. SW of Los A., Submarine gardens.
- CALISTOGA, Cal.** 71 m. N of San F. Petrified forest; Mt. Helen.
- CORONADO BEACH, Cal.** 3 m. SW of San Diego.
- FRESNO, Cal.** 206 m. SE of San F. Gateway to Yosemite, Gen. Grant and Sequoia National Parks.
- LA JOLLA, Cal.** 15 m. NNW of San Diego.
- LAKE TAHOE, Cal.** 85 m. NE of Sacramento, near towns of Brockway, Tahoe, Tallac, Glenbrook (Nev.)
- MONTEREY, Cal.** On Monterey Bay 125 m. S by E of San F. Spanish missions.
- OCEAN PK., Cal.** 16 m. SW of Los A.
- PALM SPRINGS, Cal.** 110 m. ESE of Los A. Medicinal Springs.
- PASADENA, Cal.** 10 m. NE of Los A., Mt. Lowe, Mt. Wilson and missions near by. W
- RENADO BEACH, Cal.** 18 m. SW of Los A. H
- SAN JOSE, Cal.** 48 m. SE of San F. Nearest approach to Lick Observatory on Mt. Hamilton. H
- SAN LUIS OBISPO, Cal.** 105 m. NW of Santa B.
- SANTA MONICA, Cal.** 17 m. W of Los A. S
- TAHOE, Cal.** (See Lake Tahoe)
- VENICE, Cal.** 4 m. S of Santa Monica.
- COLORADO SPRINGS, Colo.** 75 m. S of Denver. Canyons, Garden of the Gods, Manitou Springs, Cave of the Winds, Pikes Peak. H
- ESTES PARK, Colo.** 20 m. NW of Lyons. Adjoining Rocky Mountain National Park; in the shadow of Long's Peak. Forests, vales and glaciers. Splendid motor roads.
- HOT SULPHUR SPRINGS, Colo.** (RR station Sulphur Springs.) 90 m. WNW of Denver. S
- MANITOU, Colo.** 5 m. NW of Colo. Springs, and foot of Pikes Peak.

Altitude 14,000 ft. Reached by cog RR and auto roads. Cliff dwellers' ruins, Garden of the Gods, Cave of the Winds, Soda Springs.

MORaine PK., Colo. (See Estes Pk.)

PUEBLO, Colo. On Arkansas R. 45 m. S of Colo. Springs. RR center and mining district. Gateway to San Isabela National Forest Pk.

GREENWICH, Conn. 28 m. NE of N. Y. Mfg. and residential town. S

ATLANTIC BEACH, Fla. 18 m. S of Jacksonville. W

BELLEAIR, Fla. 2 m. from Clearwater. One of the finest hotels in the country, both exclusive and expensive. W

CLEARWATER, Fla. 20 m. W of Tampa. St. Petersburg on a small scale. W

DAYTONA, Fla. On Halifax R. 74 m. S of St. Augustine.

DAYTONA BEACH, Fla. 1 m. from Daytona. Speedway. W

DE LAND, Fla. 75 m. SSE of Palatka. Stetson University and especially good golf and fishing. W

FERNANDINA, Fla. On Amelia Is. 33 m. NNE of Jacksonville. Fruit growing and seafood industries. All the island resort advantages. W

LAKELAND, Fla. 32 m. E of Tampa. Fruit growing. WH

LONG KEY, Fla. 65 m. ENE of Key West. Naval Station. Fishing resort.

MIAMI, Fla. See Cities.

MIAMI BEACH, Fla. See Cities.

KEECHOOBEE, Fla. 100 m. NNW of Miami. On N shore of Lake Okeechobee, one of the largest fresh water bodies in U.S. Fruit growing, hunting, fishing.

ORLANDO, Fla. 80 m. S of Palatka, Geographic center of Fla. Fruit raising. Lovely lake country; with white swans to complete the picture.

ORMOND, Fla. 6 m. from Daytona. 22 miles of magnificent beach. Auto speedway. W

PALM BEACH, Fla. On Lake Worth, opposite West Palm Beach. Perhaps the most beautiful and surely the most luxurious of the Florida resorts. W

ST. AUGUSTINE, Fla. On Matanzas Sound. Oldest town in U. S. Hist. Fort Marion, Slave Market, St. George's St., Governor's House. Hotel, modern and magnificent. W

ST. PETERSBURG, Fla. 20 m. SW of Tampa. A progressive town boasting 20 beaches and all that that implies. W

TAMPA, Fla. See cities.

WEST PALM BEACH, Fla. On Lake Worth, opposite P. B. W

ST. SIMON'S IS., Ga. 8 mi. from Brunswick.

CRYSTAL LAKE, Ill. 8 mi. SSW of Woodstock. S

FOX LAKE, Ill. 20 m. W of Waukegan.

FRENCH LICK, Ind. 90 m. SSW of Indianapolis, Famous as a watering place and convention center.

MARTINSVILLE, Ind. 30 m. SSW of Indianapolis. Farm district. Mineral Springs.

MICHIGAN CITY, Ind. On Lake Michigan. 56 m. ESE of Chi. S

MONTEZUMA, Ind. 20 m. N of Terre Haute. Mineral Spr.

BAR HARBOR, Me. 46 m. SE of Bangor (See also Mt. Desert). Socially and scenically A1. S

BATH, Me. On Kennebec R. 30 m. NE of Portland. S

BELGRADE LAKES, Me. 10 m. NNW of Augusta. Magnificent chain famed for the abundance of fish; game in district. S

BOOTHBAY HARBOR, Me. 10 m. SSE of Wicasset. S

DEER ISLAND, Me. 25 m. NE of Rockland. Quarries, fishing, lumbering, farming district. Primitive but popular. S

KENNEBUNK BEACH, Me. 1 m. from Kennebunkport. S

KENNEBUNKPORT, Me. 10 m. S of Biddeford. One of Maine's few shelving and safe beaches. S

LEWISTON, Me. Opposite Auburn, on the Androscoggin R. S

MT. DESERT, Me. Section of the state made up of Bar Harbor, Northeast Harbor, Northwest Harbor, Southwest Harbor and Seal Harbor. The immortal Island-Mountain. America's Mont St. Michel. S

OGUNQUIT, Me. 9 m. from Kennebunk. Miles of magnificent beach and a smart social colony. S

OLD ORCHARD, Me. 12 m. S of Portland. The Atlantic City of the North Shore. S

PORTLAND, Me. On Casco Bay 108 m. NE of Boston. Com. and Ind. Government fortifications. Home of Longfellow. New City Hall. Near by Islands. A prosperous city full of New England atmosphere and recreation advantages. S

RANGELEY,) Me. 100 m. NW of Portland. On that other chain
RANGELEY LAKE,) which has helped to make Maine lakes famous. S

SEAL HARBOR, Me. 7 m. from Bar Harbor (See Mt. Desert) S

SQUIRREL ISLAND, Me. 3 m. from Boothbay Harbor. Small and delightfully primitive. S

WINTER HARBOR, Me. 7 m. only, from Bar Harbor but not as fashionable. S

YORK BEACH, Me. 40 m. SW of Portland. S

ANNAPOLIS, Md. On Severn R. 30 m. S by E of Baltimore. State capital, first capital of the U. S. Hist. Old State House, State Treasury, St. Anne's Church. Grave of John Paul Jones, Carroll Homestead. Fed. and Ed. U. S. Naval Academy, St. John's College. Sight-seeing trips from Baltimore and Washington.

HAGERSTOWN, Md. 22 m. NW of Frederick. Manufacturing town, Battle-fields adjacent. H

OCEAN CITY, Md. On Atlantic O. 30 m. E of Salisbury.

EDGARTOWN, Mass. (See Martha's Vineyard.) S

GLOUCESTER, Mass. 28 m. NNE of Boston. A fishing town still full of old land marks and salt. S

MARBLEHEAD, Mass. 18 m. NE of Boston. Old fishing town, Yachting resort. The charm of antiquity with all advantages of a modern vacation community. S

MARTHA'S VINEYARD, Mass. An island 18 m. from and connected by boat with Nantucket and New Bedford. Less famous than Nantucket but no less lovely. S

NANTASKET BEACH, Mass. 18 m. SE of Boston. Nice, and chiefly for Bostonians. S

NANTUCKET, Mass. An island 56 m. SE of New Bedford. Cod, clam, and scallop fisheries and all the best that a small island can be. S

OAK BLUFFS, Mass. (See Martha's Vineyard). S

PLYMOUTH, Mass. 37 m. SSE of Boston. Landing place of the Pilgrims. (By bus from Boston.) Hist. The Rock, Old Town House, Pilgrim Hall, First Church.

PROVINCETOWN, Mass. On Cape Cod, 55 m. SE of Boston. Fishing yarns and artist palets. S

SALEM, Mass. 14 m. N by E of Boston. Once an important sailing port, now cotton, leather and boot industries. Old New England in almost perfect preservation. S

VINEYARD HAVEN, Mass. (See Martha's Vineyard). S

WILLIAMSTOWN, Mass. 56 m. W of North Adams. Beautiful New England setting for Williams College.

BATTLE CREEK, Mich. 45 m. SW of Lansing. Agricultural region. Food Products manufacturing. H

CHARLEVOIX, Mich. 46 m. NNE of Traverse City. Fruit. S

PONTIAC, Mich. 26 m. NNW of Detroit. Farm district.

SAULT STE. MARIE, Mich. 155 m. E of Marquette. Fort Brady, International Bridge, Locks and Rapids. Tourist stop. Fishing, Hunting.

SOUTH HAVEN, Mich. 40 m. W by N of Kalamazoo. Fruit. S

SPRING PK., Minn. On Lake Minnetonka, 20 m. WSW of Minneapolis.

BOZEMAN, Mont. 98 m. SSE of Helena. Western entrance to Yellowstone Pk. West Gallatin and other canyons near by.

HOT SPRINGS, Mont. 60 m. NW of Missoula. Mineral springs.

RENO, Nev. 32 m. NW of Carson City. Mining, lumber, stock raising, and divorce decreeing.

BETHEHEM, N. H. 5 m. SE of Littleton. S

CRAWFORD HOUSE, N. H. 5 m. SE of Bretton Woods. One of the White Mountain stops in which you must be sure to stop.

FABYAN, N. H. 12 m. E of Bethlehem. S

FRANCONIA, N. H. 5 m. S of Littleton. The "Old Man of the Mountains," the Cascade in the Flume and some of the finest scenery in the state. S

- HAMPTON BEACH, N. H.** 12 m. S of Portsmouth. S
- HANOVER, N. H.** 75 m. NW of Concord. A charming town especially noted for Dartmouth and its winter sports.
- PORTSMOUTH, N. H.** State capital, 58 m. N by E of Boston. U. S. Navy Yard. St. John's Church. Another Salem with fine old houses, and fine old memories.
- WHITE MTS., N. H.** A section of state extending from Lake Winnepesaukee to the Canadian border. Highest summit, Mt. Washington. Famous passes and notches; countless splendid lakes. Among P. O. stations therein: Bethlehem, Breezy Pt., Bretton Woods, Conway, Crawford House, Fabyan, Franconia, Jackson, Jefferson, Jefferson Highlands, Lancaster, Lincoln, Littleton, No. Woodstock, Randolph, Sugar Hill, Twin Mt. S
- ASBURY PK., N. J.** On the Atlantic O. 6 m. S of Long Branch, Atlantic City's closest rival. A little Revolutionary background, and 2 fresh water lakes; but mostly 3 miles of boardwalk and a flourishing resort business. S
- ATLANTIC CITY, N. J.** On the Atlantic O. about 60 m. SE of Phila. The all-American shore resort. Health and pleasure, Winter and Summer. 8 miles of boardwalk, countless piers, theatres, auctions and much good sea air.
- CAPE MAY, N. J.** On Atlantic O. 81 m. SE of Phila. S
- LAKE HOPATCONG, N. J.** 45 m. NW of N. Y. Among the most popular Jersey Lakes. S
- LAKEWOOD, N. J.** 60 m. SW of N. Y. Especially bracing climate. H
- LONG BRANCH, N. J.** On Atlantic O. 32 m. S of N. Y. S
- OCEAN CITY, N. J.** 10 m. SW of Atlantic City. S
- OCEAN GROVE, N. J.** On Atlantic O. adjoining Asbury Pk. Methodist headquarters. No autos or bicycles used on Sunday. S
- PRINCETON, N. J.** 45 m. SW of N. Y. Mostly Princeton Univ.
- SPRING LAKE, N. J.** 11 m. S of Long Branch. S
- ADIRONDACK MTS., N. Y.** A section of Northeastern N. Y. Popular as a resort because of the diversity of attractions including majestic mountains and many splendid lakes. Among the best known points are: Ausable Chasm, Bluff Pt., Chateaugay, Eagle Bay, Lake Placid, Long Lake, Loon Lake, Old Forge, Paul Smith's, Plattsburg, Raquette Lake, Saranac Lake, Scroon Lake, Upper Saranac and Westport. Deer hunting in some localities. Winter sports in others.
- AUSABLE CHASM, N. Y.** 12 m. S of Plattsburg. Chasm of Ausable R. and Rainbow Falls. (See Adirondack Mts.)
- CATSKILL MTS., N. Y.** Mountain resort section in southeastern portion of the state, including among others, the following towns: Big Indian, Cairo, Catskill, East Windham, Haines Falls, Highmount, Hunter, Kaater-

skill, Lexington, Palenville, Pine Hill, Prattsville, Roxbury, Stamford, Shandaken, Tannersville, Windham. S

CHAUTAUQUA, N. Y. On Chautauqua Lake, 15 m. NW of Jamestown. A Summer colony built 'round an educational institute.

FISHERS IS., N. Y. 8 m. from and connected by boat with New London. Small but yachty. S

GREENWOOD LAKE, N. Y. 22 m. SW of Cornwall. Quiet but comfortable. S

LAKE GEORGE, N. Y. Located in the NE part of the state surrounded by resort spots which are reached through the following P. O. stations: Bolton, Diamond Pt., Glenburnie, Hague, Huletts Landing, Kattskill Bay, Lake George Village, Roger's Rock, Sagamore and Uncas. Hist. Forts George and William Henry. One of America's most frequented lakes. And no wonder!

LAKE MAHOPAC, N. Y. 12 m. NE of Peekskill. S

LAKE PLACID, N. Y. 8 m. S by E of Saranac Lake. (See Adirondack Mts.) Fashionable all-year resort. Reputed for Winter sports.

PAUL SMITH'S, N. Y. 10 m. NW of Saranac Lake. (See Adirondack Mts.) A one-hotel society stronghold. S

SARANAC LAKE, N. Y. 40 m. S of Malone. (See Adirondack Mts.) Year 'round for recreation and health; and lots of both.

SARATOGA SPRINGS, N. Y. 38 m. N of Albany. Mineral springs, State Park and Horse racing, but not as racy as 20 years ago. S

THOUSAND ISLANDS, N. Y. In the St. Lawrence R. at the outlet of Lake Ontario. An enchanting region which combines unspoiled natural beauty with all sorts of sophisticated recreation. S

TUXEDO PARK, N. Y. 30 m. NW of N. Y. A restricted residential community of the socially elect.

WEST POINT, N. Y. On the Hudson R. 8 m. S of Newburgh. Pleasant scenic boat ride from N. Y. to the U. S. Military Academy.

ASHEVILLE, N. C. 210 m. W of Raleigh. Agricultural and stock raising. National game preserve.

HENDERSONVILLE, N. C. 21 m. SE of Asheville. Cotton and tobacco. Nat. Old Bald, Sugar Loaf and Jump Off Mts., Caves and Hickory Nut Gap.

PINEHURST, N. C. 62 m. SW of Raleigh. 81 Holes of Golf, 100 miles of bridle path and a great deal of style.

PUT-IN-BAY, O. On an island in Lake Erie, 24 m. NW of Sandusky. S

CAMBRIDGE SPRINGS, Pa. 26 m. S of Erie. Dairying district.

DELAWARE WATER GAP, Pa. 22 m. NNE of Easton. The 2-mile gorge through which the Delaware marks the boundary between Pa. and N. J. Exquisite scenery and a favorite tourist point.

GETTYSBURG, Pa. 37 m. SW of Harrisburg. Agricultural and fruit district. Mineral deposits. Historically rich and important. Hist. National Park, National Cemetery, Battle-field.

MT. POCONO, Pa. 15 m. NE of De. Water Gap. Fine scenery and bracing climate. S

BLOCK ISLAND, R. I. 13 m. from R. I. Mainland. Fine fishing. S

NARRAGANSETT PIER, R. I. On Atlantic O. 10 m. SE of Newport. Said to be somewhat smarter than it is, but still it has everything that a seaside resort need have. S

NEWPORT, R. I. 26 m. S by E of Providence. An old New England town with several historical attractions and the endorsement of most of the Social Register. S

GREEN MOUNTAINS, VT. Extending from Canada to Mass., divide the state almost equally. Some of the principal tourist stops are: Alburgh, Arlington, Bennington, Brandon, Burlington, Chester, Danby, Ferrisburgh, Grand Isle, Manchester, Montpelier, No. Hero, Poutney, Proctor, Rutland, St. Albans, Salisbury, So. Hero, Vergennes and Wallingford.

MANCHESTER, VT. 32 m. S of Rutland. Agricultural, marble and lumber region. One of the finest golf courses in America and from its first tee, one of the grandest views anywhere. S

CAPE CHARLES, Va. 32 m. N by E of Norfolk.

NEWPORT NEWS, Va. On N side of Hampton Roads, 7 m. above Fortress Monroe. Ship building and fishing industries.

OLD PT. COMFORT, Va. On Hampton Roads, 13 m. from Norfolk. Hist. Fortress Monroe and National Soldiers' Home.

VIRGINIA BEACH, Va. On Ocean 17 m. E of Norfolk. S

LAKE GENEVA, Wis. On Geneva Lake, 53 m. SW of Milwaukee. S

American National Parks

National Parks are areas set apart and administered by the federal government for the enjoyment of the people. They have been chosen for their extraordinary scenic beauty and have been left entirely in their natural state except for the cutting of roads and trails and the building of hotels and camps.

These parks now number 22 and cover a total area of 12,183 square miles. Each contains features of special interest; each has a very individual character and personality.

Each park is in charge of a superintendent and enough rangers to assure the safety of the park as well as its visitors. There are good roads and free automobile camps for those bringing their own equipment. There are also excellent hotels and tent or cabin accommodations. In most of the parks accommodations are under government supervision and rates are therefore standardized. This is also true of transportation rates—autos, boats and horses—and even charges for auto repairs, etc.

Full information concerning how to reach each park, the interesting features peculiar to each, the advisable equipment, baggage-weight limit, and accommodation rates—is contained in pamphlets issued free by the U. S. Department of Interior, National Park Service, Washington, D. C.

Below are giving merely the names of the parks, locations, distinctive characteristics and the duration of the tourist season.

Name of Park	Location	Season	Sq. Mi.	Distinctive Characteristics
Acadia	Maine Coast	All Year 6/15-10/15	16	The granite mountains on Mt. Desert Island and point on mainland across Frenchmans Bay—Formerly called Lafayette National Park.
Bryce Canyon	Southwestern Utah	Summer	23	Box Canyon filled with countless eroded pinnacles. Exhibit of vivid coloring of earth's materials.
Carlsbad Caverns	Southwestern New Mexico	All Year	1	Stupendous caverns not yet wholly explored; with magnificent limestone decorations.
Crater Lake	Southwestern Oregon	7/1-9/20	249	Lake of extraordinary blue in crater of extinct volcano. Interesting lava formations. Fine fishing.
General Grant	Middle eastern Calif.	All Year	4	Created to preserve the celebrated General Grant Tree, 40.3 ft. in diameter. 31 m by trail from Sequoia National Park.
Grand Teton	Northwestern Wyoming	6/20-9/19	150	Includes most spectacular portion of Teton mountains, a granite uplift of particular grandeur.
Glacier	Northwestern Montana	6/15-9/15	1,534	Rugged mountain region of unsurpassed alpine character. 250 glacier-fed lakes, 60 small glaciers. Fine trout fishing.

Name of Park	Location	Season	Sq. Mi.	Distinctive Characteristics
Grand Canyon	North central Arizona	All Year	1,009	The greatest example of erosion A truly superb spectacle.
Hawaii	Hawaii	All Year	245	Interesting volcanic areas. Active and extinct volcanoes.
Hot Springs	Middle Arkansas	All Year	1½	46 hot springs said to possess healing properties. Bath houses under govt. supervision.
Lassen Volcanic	Northern California	6/1—9/15	163	Only active volcano in U. S. proper. Lassen Peak, Cinder Cone, Hot Springs, Mud geysers.
Mesa Verde	Southwestern Colorado	5/15—10/15	80	Most notable and best preserved pre-historic cliff dwellings in U. S. if not in the world.
Mt. McKinley	South central Alaska	Summer	2,645	Highest mountain in N. A.
Mt. Rainier	West central Washington	All Year	325	Largest accessible single peak glacier system. 48 sq. m. of glaciers, 50 to 500 ft. thick Subalpine wildflower fields.
Platt	Southern Oklahoma		1⅛	Sulphur and other springs possessing medicinal value

Name of Park	Location	Season	Sq. Mi.	Distinctive Characteristics
Rocky Mountain	North Middle Colorado	All Year 6/15—9/20	401	Heart of the Rockies Snow range. 11,000 to 14,255 ft. altitude. Remarkable records of glacial period.
Sequoia	Middle eastern Calif.	All Year	604	The Big Tree National Park. General Sherman Tree 37.3 ft. in diameter and 273.9 ft. high Towering mountain ranges.
Sullys Hill	North Dakota	Summer	1	Small park with woods, streams and a lake. A wild animal preserve.
Wind Cave	South Dakota	All Year 6/1—9/30	17	Cavern having several miles of galleries and numerous chambers containing peculiar formations.
Yellowstone	Northwestern Wyoming, southwestern Montana and northeastern Idaho	6/20—9/19	3,426	More geysers than in all the rest of the world together. Boiling springs. Mud volcanoes. Petrified forests. Grand Canyon of the Yellowstone. Lakes, streams and waterfalls. Vast wilderness. Wild bird and animal preserve. Fine trout fishing.
Yosemite	Middle eastern Calif.	All Year	1,139	Valley of world-famed beauty. Lofty cliffs. Waterfalls of unusual height. 3 groves of big trees. Good trout fishing.
Zion	Southwestern Utah	6/1—9/25	148	Magnificent gorge (Zion Canyon) depth from 1,500 to 2,500 ft. Great scenic beauty

ITINERARY

ITINERARY

ITINERARY

GOING

Date

S. S.

Line

Captain's Autograph

GOING

RETURNING

Date

S. S.

Line

Captain's Autograph

RETURNING

SIDE TRIPS

SIDE TRIPS

HOTELS STOPPED AT

HOTELS STOPPED AT

AUTOGRAPHS

AUTOGRAPHS

INCIDENTS

INCIDENTS

PEOPLE MET

PLACES VISITED

Date

Dec 7 1941

Place

Pearl Harbor

Was peacefully
reminiscing in my
bunk about last
night. Had been
to a party with
the Mr. Mote at
the Hickam Field
Officers' club. Sirens
sounded
the clock said 0800
so I surmised that
they must be testing
it. I heard a yell
from passageway
"Mr. Davis, we are
being attacked."
I jumped up, ran

PLACES VISITED

Date

Place

to the door of the
wardroom. As I went
up a Japanese plane
helmed up over Ford
Island clearly showing
the rising sun on its
wings. Made the
director in nothing flat
to get battery firing. I
am senior gunnery
officer aboard and
only one who knows
how to work the
director. I got the
machine guns going
about 0003. Load down
locks on magazine.

PLACES VISITED

Date

Place

Had a hell of a time
getting 5" firing. About
3850 I got them ready
with ammunition &
During time I was
getting ammunition for
5" battery I saw Utah
capsize astern of us.
We saw second DD in
harbor, to open up with
machine guns, first with
5" Arizona is burning
fiercely Her back is
broken Raleigh is
torpedoed astern of us.
Quickly get bad list
to port. All DDs are

PLACES VISITED

Date

Place

firing now. This is
 hottest part of harbor.
 Plane is attacking our
 mast. "All guns fire"
 to arm. 45 "I" fire when
 hearing "Fire" machine
 guns are firing steadily
 several Machine. See
 bullets ricochet off
 sides of director and
 mast. One 6" from my
 head a bunch of
 a foot away. Glad this
 is my lucky day.
 Sun #2 is firing.
 Machine guns that
 plane bursts into

PLACES VISITED

Date

Place

flame and crashes
on hill dead ahead
of ship. No one hurt
yet. Port fu'd machine
gun barking up "Fire
until it blows up
Johnny is getting ready
to get underway. Plane
just connected with
5" shell over Curtiss.
Nothing left of him.
2nd attack starting
must be only about
0840. God its cold -
only have on my
skirry too. Plane
coming over. "Live

PLACES VISITED

Date

Place

to him All guns fire'd"
Tally two for us today;
hope he dies in hell
Quickest hangover I ever
got rid of in my life.

Jesus we need a water
and everything is
shut off. Cop avative
hull now. About ten
planes shot down during
their last visit near
the I.D.S. These ships can
sure shoot.

High altitude bombers.
No power, for director!
Engines have been
secured Whitney

PLACES VISITED

Date

Place

Can not supply enough
for 5 ships. Can not get
near them with local
control "Cape firing"
Wonder what's happening
over on battleship
row? All DDs out here
are safer. Cassin and
Downer, other half of
how division got burning
furiously. Monaghan
just sunk sub in
harbor. My clothes
got here. Must be OGH's.
California and West
Virginia are sinking.
As just torpedoed

PLACES VISITED

Date

Place

Nevada. She is burning
for 'd. Wonder how
Joe Tausig is? Am so
mad am crying. First
time in years. Damn dumb
admirals & generals. Taking
up all the ammunition
Good thing we belted
machine gun ammo yes
today 500 rds 5" expended
no casualties 1000
rds 50 cal. expended
one gun broken up.
"Cut off all magazine
locks." God damn
good thing no carriers
and civilians are in.

PLACES VISITED

Date

Place

Only Helena is slightly damaged, and Raleigh
another hit by bomb
aft. Oklahoma just
captured. Poor 50. hrs.

Captain and rest of
officers returned. I
"Mrs Davis single up."
"1005 under way" "Mrs
Davis report to executive
officer" exec bawled
me out for cutting locks
off magazines. Says I
act too quickly I should
wait, and reflect first
wouldn't you sit
home on his fatass

PLACES VISITED

Date

Place

then comes out and
tells we are all wet
and gives us hell for
the way we fought
the battle. Ted says
he was too scared
to move coming out.
Hope he gets one in the
gut so the big thing
will spill all over the
deck.

"Mr Danjo Captain says
clear ship for action."
Am hungry as hell.
no breakfast. Throw
overall wood and canvas,
all excess gear topside.

PLACES VISITED

Date

Place

and below. "Mr Davis
report to Executive Officer"
"What the hell are you
doing you fool"
"Captain's orders clear ship
for action sir."

Hope the friends in
hell. They are bombing
Honolulu. Can see
them from ship. They
are forming up to
attack 17 Destroyers
and Destroyers, that's
left of battle force.
Passed, Nevada in
channel burning furiously
"Secure from G & set"

PLACES VISITED

Date

Place

condition three watch
one "Rest at last its
1500. Of all the stupid
cowards are ex ec is
the worst. Food at last.
Have mid at ~~start~~ better
get some sleep. What
a day 5 battle ships
sunk 2 cruisers hit
Ogala sunk Half of
our division sunk.
All because people try
to kid themselves.

PLACES VISITED

Date

Dec 20

Place

Palmira

Attached by submarine
New Orleans Jan. Can't
find it. Penn I'm
tired. Wish the sea
could leave us alone
Johnny + Ted would
like to visit his graveyard
out

PLACES VISITED

Date

Feb 12 1942

Place

Off Pearl Harbor

Sot another submarine
this afternoon when
we left for Midway
Island. About 200 yds
off port bow when first
contacted. Increased speed
to 25 knots; dropped
7 ashcan's at 90 yds. ext.
Only a couple of
mangled gasps left.

Was asleep in W.C. when
first ash. can went
off. hit overhead
and proceeded aft
to load ash can
racks as we dropped
them.

PLACES VISITED

Date

Feb 16 1941

Place

Midway Island

Quite a place
Have 3 batteries of 7"
guns from the U.S.S.
Louisiana, and some
other stuff. About 1000
marine. Civilians being
evacuated; they are scared
stiff.

Booney birds are
funny as hell. They
seem to enjoy life war
or no war.

PLACES VISITED

Date Feb 20

Place At Sea

Raised hell with a
poor whale. They look
just like submarines

PLACES VISITED

Date Feb 21

Place At sea

Orders to Sub base
New London today. I
will be sorry to leave
the old Retal Base.

PLACES VISITED

Date

Place

PLACES VISITED

Date

Place

PLACES VISITED

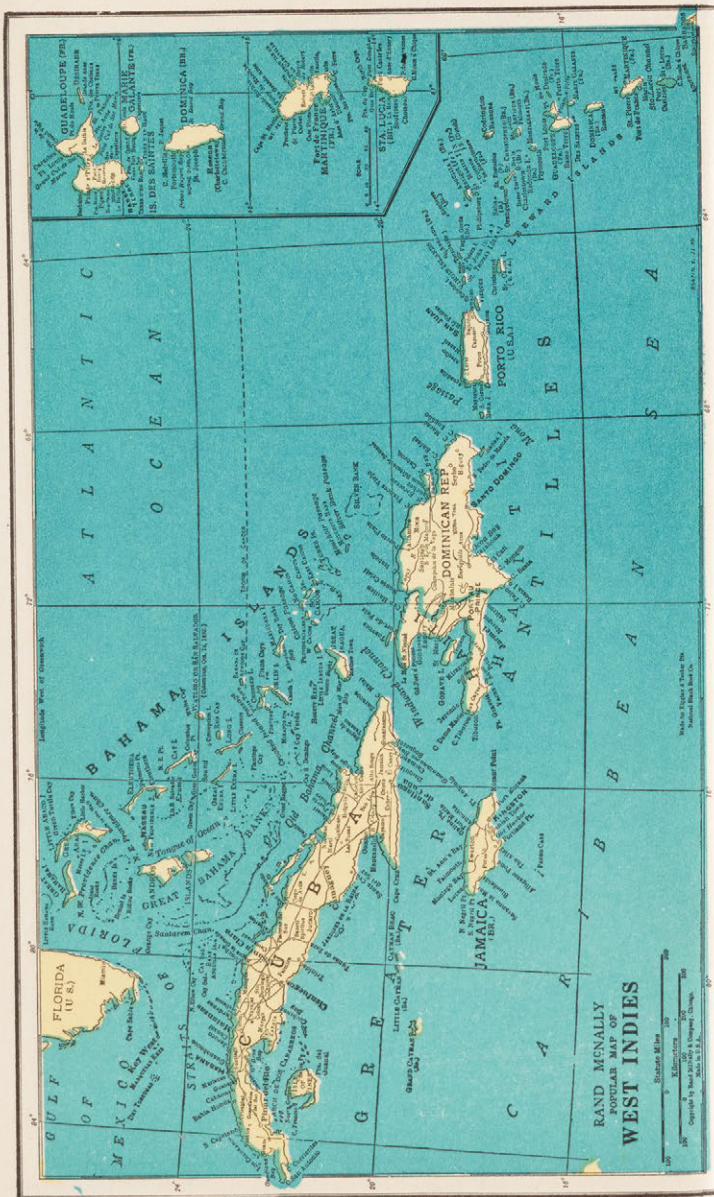
Date

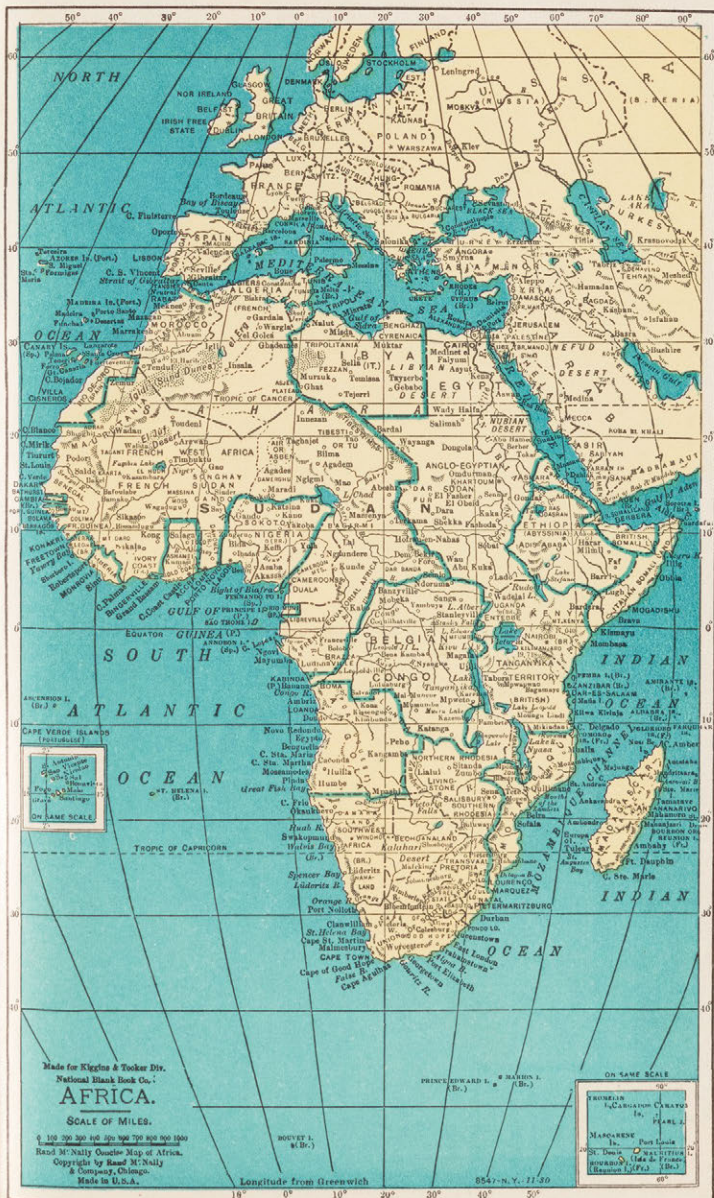
Place











SCALE OF MILES





UNION OF SOVIET REPUBLICS



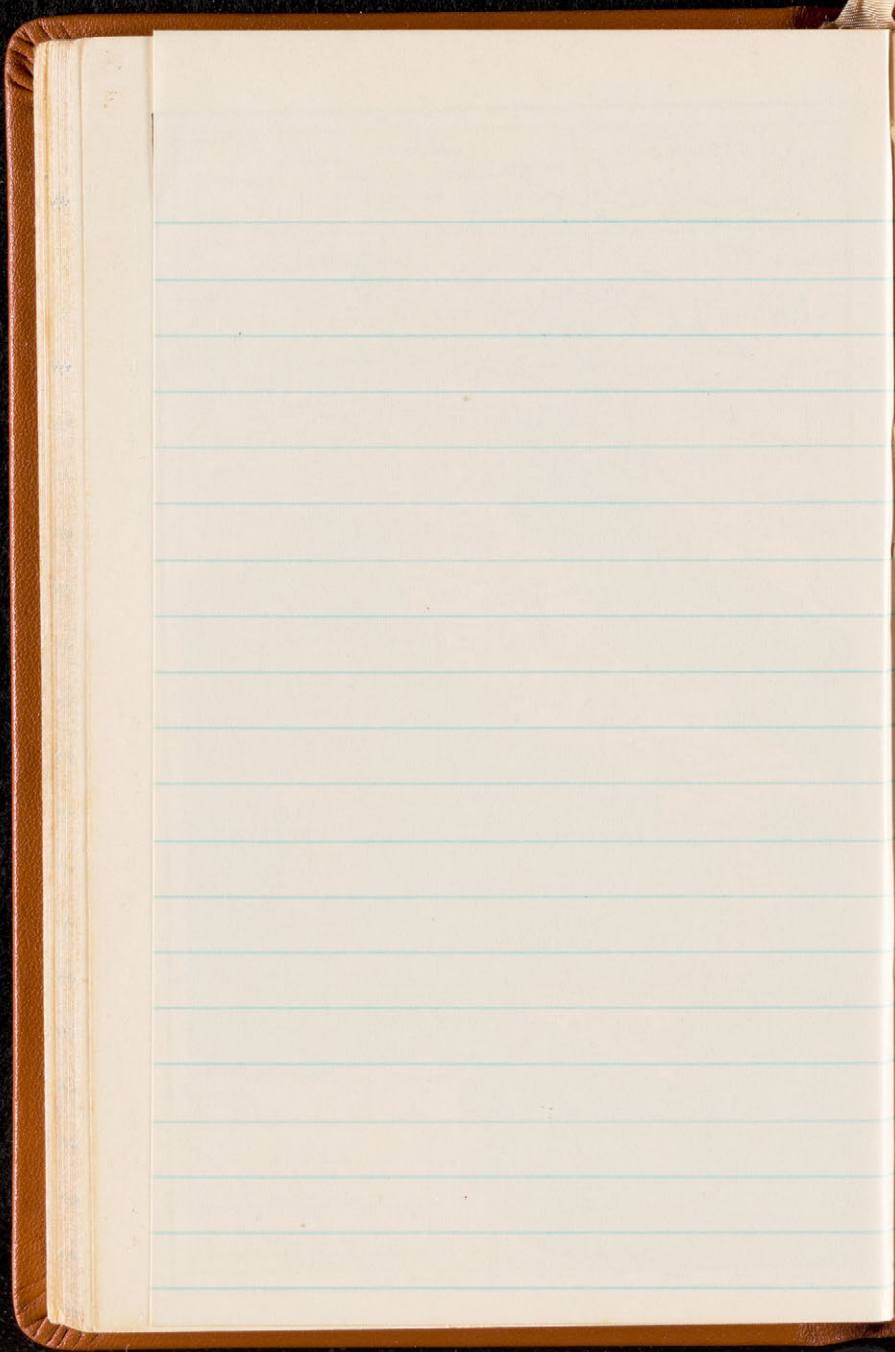








A
B
C
D
E
F
G
H
I
J
K
L
M
N
O
P
Q
R
S
T
U
V
W
X
Y
Z



A

B

C

D

E

F

G

H

I

J

K

L

ME

M

N

O

P

Q

R

S

T

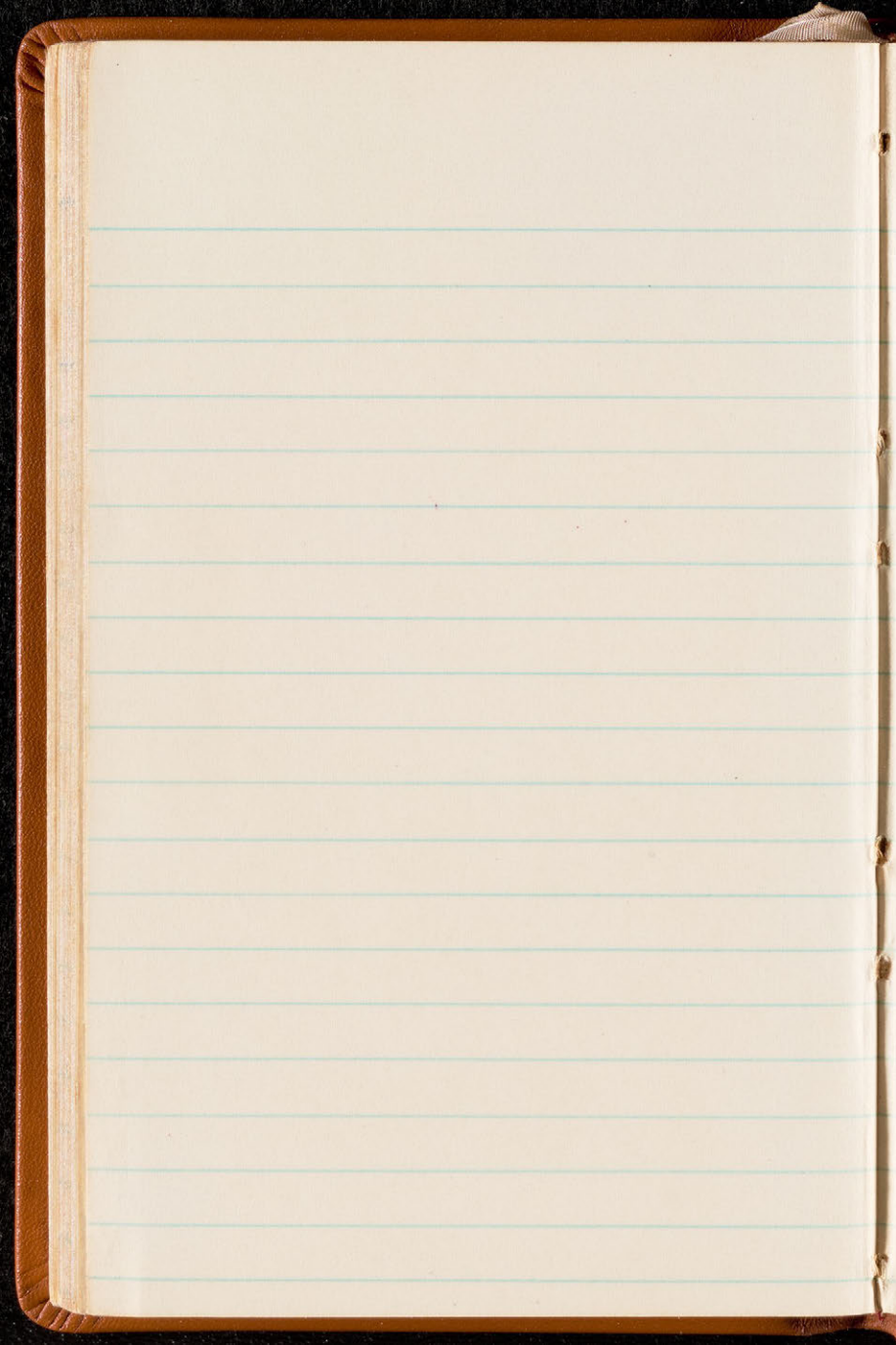
U

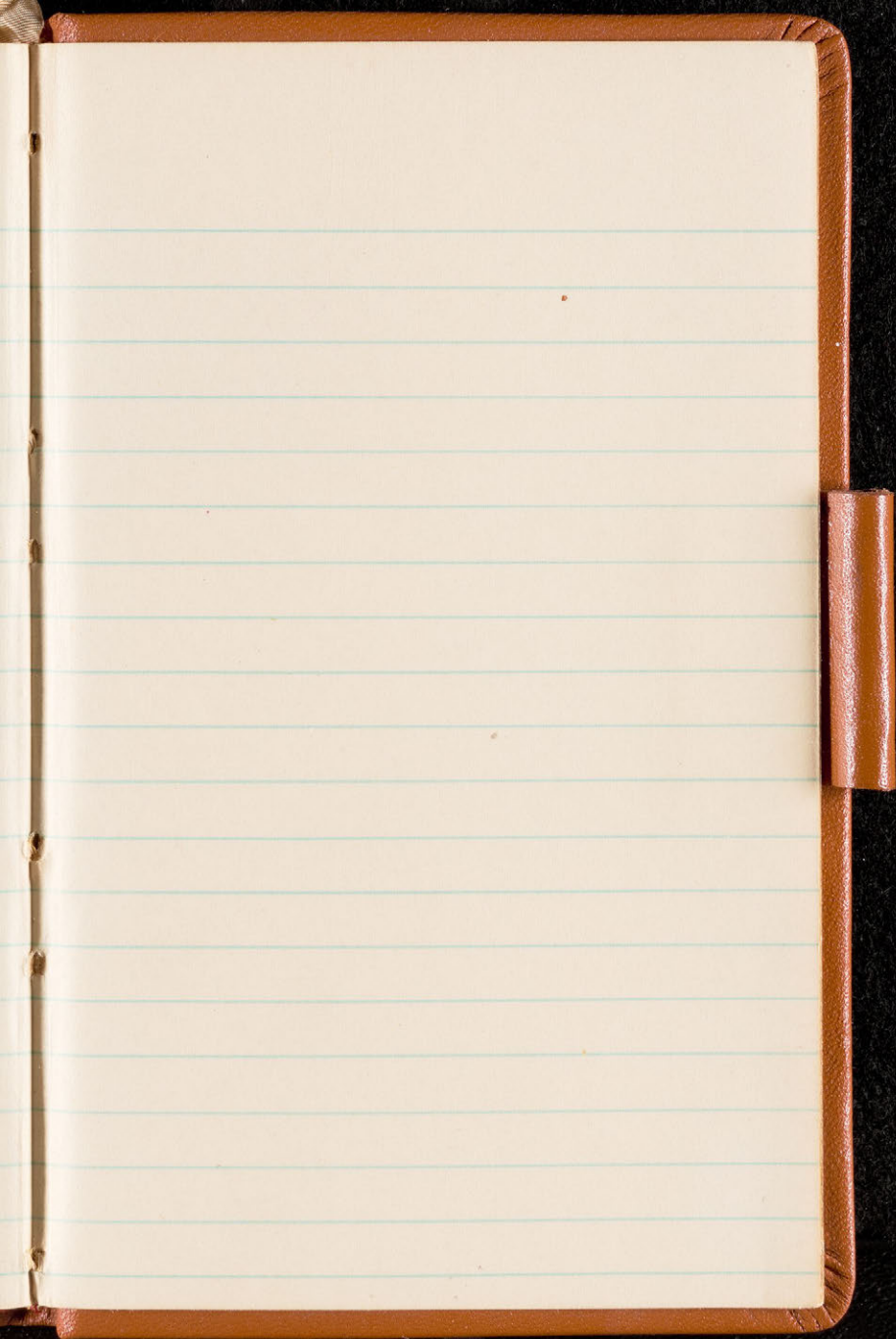
V

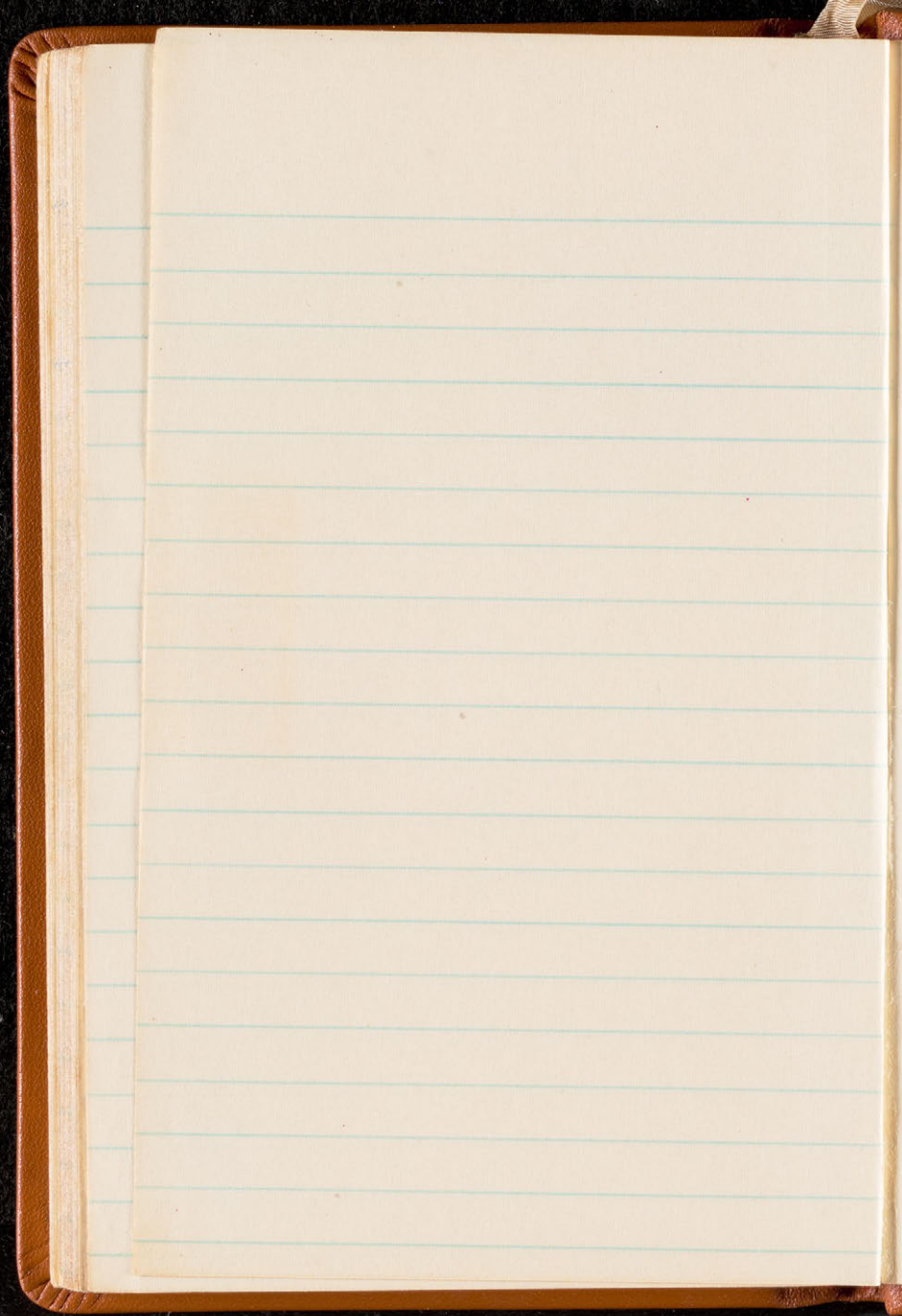
W

Y

Z









K & T 212/86

GENUINE LEATHER
MADE IN U. S. A.

452.1.d



