

### THE WEATHER

Mostly cloudy tonight and Sunday; probably showers on coast; light rain and snow flurries in mountains this afternoon and tonight; not much change in temperature.

## FDR SIGNATURE ENDS EMBARGO AGAINST ARMS

### Neutrality Law Of 1939 Is Signed Into Law

## U. S. NEUTRALITY IS RE-DECLARED Proclamations Putting Act Into Effect And Regulating territorial Waters Issued

Washington, Nov. 4.—(AP)—President Roosevelt signed into law today "the neutrality act of 1939," ending the embargo on arms sales to France, Britain and Germany and establishing a neutrality policy designed to keep the United States from being drawn into the war in Europe.

The new law, strictly regulating all dealings with belligerents in a series of safeguards against war unprecedented in the nation's history, was signed at a formal ceremony in the President's office in the presence of Secretary Hull and a large group of legislators.

Press Secretary Stephen Early stood at the open door and waved to newspapermen in the lobby when the chief executive affixed his signature at 12:04 p. m. EST.

His signing of the bill gave a signal which officials expected to result in the placing of one billion dollars worth of war orders in this country, mostly by France and Britain, within the next few weeks.

A second later the President signed a proclamation putting the law into effect immediately by re-declaring this country's neutrality in the war between Germany and France, Poland, the United Kingdom, Australia, New Zealand and the Union of South Africa.

Another proclamation at the same time regulated the use of American ports and territorial waters by belligerent submarines.

Both of these proclamations had been issued under the old neutrality law carrying the arms embargo, which was repealed by the new statute.

It was necessary to issue a new neutrality proclamation because the law, as had the old, provided that the neutrality program should become operative whenever the President found a state of war existed.

The chief executive used two pens in signing the historic document. He gave one to Chairman Pittman.

(Continued on page six)

## Calls Meeting Of Pitt Legionnaires

Commander T. J. Swain of Pitt county, news No. 39, American Legion, has called a meeting of post members to be held in the offices of the Chamber of Commerce tomorrow night at 8:00 o'clock for the purpose of perfecting plans for the Armistice day program and barbecue to be held at the college next Saturday.

## 1940 Parent-Teacher Meet to be Held Here

The tenth district North Carolina Teachers' Association will hold its annual meeting in Greenville next year. It was revealed today by local delegates to the 1939 session held in Jacksonville yesterday.

The district includes 10 eastern counties, running from Pitt to New Hanover.

Among those from here who attended the Jacksonville meeting yesterday were J. H. Rose, Miss Eva Keeter, Mrs. R. B. Lee, Mrs. C. C. Hilton, Miss Agnes Fullilove, Mrs. J. O. Duval, Mrs. Jake Williams, Mrs. H. A. Hudson, Mrs. Louis Hales and Mrs. Roy Hardee.

## Greenville Awarded State Student Meet

Greenville delegates to the North Carolina Student Council Congress annual meeting being held in Durham today advised J. H. Rose that Greenville had been selected for the meeting next year.

Miss Helen Dugan, faculty member advisor, and Miss Janice Eakes, president of the local council, headed a delegation of 12 to the Durham meeting.

Greenville was awarded the 1940 meeting over several other cities seeking the honor. Approximately 300 or 400 leading high school students attend the annual two-day meetings.

## Joint Committee Approves Neutrality Bill



This joint Senate-House committee approved the administration's neutrality bill at conference in Washington, paving the way for final action by Congress. Seated, left to right: Sen. Key Pittman (D-Nev.); Sen. Walter F. George (D-Ga.); Sen. Tom Connally (D-Texas); Sen. William Borah (R-Idaho); Sen. Hiram Johnson (R-Calif.). Standing, left to right: Rep. Sol Bloom (D-N.Y.); Rep. John Kee (D-W. Va.); Rep. Charles Eaton (R-N.J.); Rep. Hamilton Fish (R-N.Y.); Rep. Luther Johnston (D-Texas). Absent was Sen. Robert Wagner (D-N.Y.).

## IS SENTENCED TO SIX MONTHS

### Gaylor Found Guilty In Slot Machine Case

Walter Gaylor, who pleaded guilty in one slot machine case and was convicted by a jury in another, was given a six months sentence by Judge J. Paul Frizzelle in Superior court here this afternoon.

Gaylor was also given an additional six months suspended upon payment of \$50 and costs and upon further provision that he remain on good behavior and not deal in illegal slot machines for two years.

L. B. McCormick, co-defendant in one of the cases, was acquitted by the jury.

Jasper Boyd was convicted of having an illegal slot machine in his place of business, and was given a suspended two year sentence.

A charge of perjury against P. A. Mixon which grew out of the slot machine case was continued. Solicitor D. M. Clark drew a bill charging Mixon with perjury, contending that he offered testimony on the stand which contradicted statements he made in a sworn affidavit, and the grand jury returned a true bill.

The slot machine case was hard fought throughout, with Solicitor Clark prosecuting and Albion Dunn conducting the defense. The case was started Thursday afternoon and was completed at an afternoon session today.

Judge Frizzelle gave Gaylor 60 days in which to attend to business details before beginning service of the sentence.

## MURDERS WIFE ON HONEYMOON

### Young Husband only Says He Had An "Urge to Kill"

Springfield, Mass., Nov. 4.—(AP)—Her wedding bouquet still fresh in a refrigerator, pretty 13-year-old Caroline Hibberd, a bride of a week, was found decapitated early today in the bathroom of her honeymoon apartment shortly after her young husband allegedly confessed he did it because of an "urge to kill."

After a sleepless night in Brattleboro, Vt., police headquarters, where he surrendered, William Hibberd, 20, the bridegroom, told newspapermen he had an "urge to kill" for about two years, but that he did not get a chance to do so until last night.

Declaring that he had been under treatment, Hibberd said he had no motive other than the "urge" to do it.

His wife asked him to get her a glass of water during the night and when he returned with the water, he related, "I drew a hunting knife into her chest. She cried a little and then I dragged her to the bathroom."

Hibberd said he was a little hazy after that, but remembered becoming frightened while cutting up the body and of fleeing the house and buying a railroad ticket to Brattleboro, more than 60 miles away.

FOOTBALL  
Carolina 17—State 0.  
Notre Dame 14—Army 0.  
Duke 7—Georgia Tech 6—(third period).

## Planes Active

Paris, Nov. 4.—(AP)—At least a dozen German scouting planes penetrated deep into French territory today through heavy French anti-aircraft fire.

Military dispatches from the front said the squadrons flew high to avoid bursting shells and maneuvered over Forbach, Colmar and Metzhouse and then headed west toward the Bourgoigne region around Dijon.

No attacks on French cities were reported.

French flyers at the same time were reported to have made reconnaissance flights over the German Rhineland without mishap.

## HOSPITAL FIRE TOLL AT FIVE

### Two More Die of Injuries Received Yesterday

Lincolnton, Nov. 4.—(AP)—The number of patients who died of injuries received in a fire at the Reeves hospital here early yesterday rose to four today.

Miss Flossie Peeler, 10-year-old daughter of Mr. and Mrs. John Peeler of Maiden, died early today at the Gordon Crowell Memorial hospital here, where she had been taken with 13 others during the blaze. Ten of the patients are still at the hospital.

The others who died were: Mrs. R. E. Hufstetter, Lincoln county, who died yesterday afternoon.

G. B. Goodson, 56, former Lincoln county postmaster and former treasurer and sheriff of Lincoln county.

Mrs. W. B. Reeves, 53, West Jefferson, a niece of Dr. J. R. Gamble, head of the Reeves hospital.

Crowell Memorial hospital attaches described the condition of Mrs. W. H. Ikard, Lincolnton, the mother of a child a few days old, as serious.

The other patients at the hospital were considered improved today.

## French Cash Sent To U. S. Aircraft

New York, Nov. 4.—(AP)—France was reported in financial circles today to have advanced \$1,000,000 to finance the construction of new American aircraft factories in an allied move to gain air supremacy.

Of this sum \$10,000,000 was reported to have been advanced to Curtis Wright corporation half to be used for engine production and half for planes and propellers and \$3,000,000 to the Pratt and Whitney division of the United Aircraft corporation.

Financial sources said it was on the strength of these advances, coupled with huge orders for war planes, that Curtis-Wright recently purchased the hollow steel propeller division of the Pittsburgh Screw and Bolt company.

## Winter Meetings Set For County Teachers

D. H. Conley, superintendent of the Pitt county schools, revealed today that a county-wide principals meeting has been set for Monday night, November 13, and that teachers and principals would attend a meeting of the Northeastern district of the North Carolina Educational Association in Wilson on Friday, November 17.

The district meeting was held here last year and was attended by a large number of teachers from the northeastern part of the state.

## CREW FEARFUL CRAFT MARKED

### American Crewmen Doubtful Concerning Next Move

Bergen, Nov. 4.—(AP)—American crewmen aboard the City of Flint told the Associated Press today they feared the vessel now is a "marked ship" on the seas and expressed doubt concerning her next move.

Although newspaper reporters were not at first permitted to board the ship, a woman representative of the Associated Press managed to go aboard and talk with members of the crew.

Advised by the sailors that they were under orders to say nothing, she suggested:

"It would be nice if your families in America got word quickly that you men are all right."

"Tell them we're all right," a spokesman for the crew answered.

Sailors, dangling over the side to repaint the stars and stripes on the hull, greeted the reporter with broad grins. To the query "how are you feeling now," one replied:

"It's fine now, but I was scared stiff while the Germans were aboard."

The Americans said they had been treated well by the Germans, who they said were aware their task was unpleasant for the Americans.

## New Evidence On Atlantic Disaster

Jupiter, Fla., Nov. 4.—(AP)—New evidence of a mysterious disaster at sea off the lower Florida coast swept into shore today adding a new puzzle to the two-day search for the identity of a vessel believed lost in stormy weather.

A life boat in good condition and still stowed with life preservers was found at Hobe sound, about five miles north of Jupiter where yesterday, a six-mile long oil slick and bits of wreckage started an investigation.

The life boat bore no painted name on its exterior, but inside near the stern was a copper plate engraved with the name "See-Berutsgenossenschaft" (sea trade union).

From across the sound came the reports that a Negro caretaker told of seeing a large hulk of wreckage "as big as a house" floating slowly north off the coast.

## November Business Best Since 1928

### Babson Urges Business, Labor, Washington To Hold Down Prices

Babson Park, Mass., Nov. 4.—Business is centering alone at 25 per cent above a year ago. With the exception of 1928, this month is opening at the highest level for any November in history! Yet, good stocks are actually cheaper than they were last November! Stock prices are an excellent barometer of sentiment. The fact they do not rise in the face of this good news means that business men are worried. They are fearful that Washington will skim the profits through taxes. Congress, however, will not raise taxes in an election year.

Beware of Higher Prices  
Even though there is no need to worry about Washington, and taxes, business men should be concerned about commodity prices. Both the big labor parties have had their annual conventions recently. The spotlight at each was trained directly on living costs under war conditions. If prices are increased too much we may easily kill "the goose

## ALLIES GRASP CHANCE TO BUY ARMS IN U. S.

### Britain and France Confer on Joint Purchases

### FRANCE DESIRES U. S. AIRPLANES

### No Indication at Present, however, To What Extent Allies Contemplating Purchases.

Paris, Nov. 4.—(AP)—Great Britain and France, grasping at the chance offered by the United States' lifting of the embargo, conferred today on a joint plan for purchases of war materials overseas.

Following the arrival Thursday of Winston Churchill, First Lord of the British Admiralty, authorized sources disclosed that the British and French governments were studying such questions as payment, shipment and distribution between them of American arms.

War planes, such as the Curtis Hawk, which the French regard as one of the most flexible fighting ships on the Western front were understood to be the American product in which the allies were most interested.

There was no indication at the moment, however, to what extent they might be contemplating purchases.

Authorized sources said the program of French purchases in the United States would be executed in complete cooperation with the British Empire.

The morning communique of the War Ministry noted only continued patrol activity "at various points" on the Western front.

Military dispatches indicated, however, the French were on the alert for possible surprise attacks on the northern flank in the wake of persistent German artillery fire.

## GREAT BRITAIN MAPS SHIPPING

### Begins Comprehensive shuffle of merchant Marine

London, Nov. 4.—(AP)—Britain began planning a comprehensive shuffle of her war-time merchant marine today to meet heavy shipping demands expected on repeal of the United States arms embargo.

Authoritative shipping circles said these steps were envisaged.

Schedules of all Britain's overseas trade route will be revised to free tonnage for trans-Atlantic use. In doing this the shipping industry will budget for vital supplies coming to the United Kingdom from the empire.

"In New York shipping circles indicated the British would exchange their South American shipping with the United States to make up for the American ships taken out of the European trade by the neutrality measure."

Some ships undoubtedly will be taken off South American routes, but it was pointed out that Latin-American countries were among Britain's biggest suppliers of meat and other essential foodstuffs.

Strong naval escort units probably will be needed to guard shipments from the United States to Europe.

Dr. Schuller, who came here for the Midwest Clinical society is now on the Cook county hospital staff.

## Return Ship To U. S. Crew; Germany Protests Action

### NAZIS EXPECT PUT UP FIGHT

### German Charge D'affaires Promptly Protests to Norwegian Government against Its Internment of German Crew and Release of American Freighter to Americans

Berlin, Nov. 4.—(AP)—The German charge d'affaires at Oslo protested today to the Norwegian government its internment of the German prize crew from the American freighter City of Flint and the release of the vessel to the American crew.

Authorized sources said the protest was "oral and based on the whole procedure of Norwegian authorities in connection with the City of Flint at Haugsund" where the internment and release orders were carried out early today.

These informants indicated that the charge d'affaires soon would leave or already had left for Haugsund to make a personal investigation.

There was considerable telephoning between Oslo and Berlin during the night. These sources said there would be "plenty of argument" with the Norwegians in ensuing days.

Germany was represented as declining to accept the Norwegian argument that there was sufficient ground in the German report that a member of the American crew was ill for the City of Flint to be brought into the neutral harbor of Haugsund.

The German contention was that such humane action should not be "rewarded" by internment of the prize crew commander who naturally could not tell whether the American was really ill, but heeded President Roosevelt's plea for good treatment of the 41 Americans.

Authorized sources said the program of French purchases in the United States would be executed in complete cooperation with the British Empire.

The morning communique of the War Ministry noted only continued patrol activity "at various points" on the Western front.

Military dispatches indicated, however, the French were on the alert for possible surprise attacks on the northern flank in the wake of persistent German artillery fire.

The German contention was that such humane action should not be "rewarded" by internment of the prize crew commander who naturally could not tell whether the American was really ill, but heeded President Roosevelt's plea for good treatment of the 41 Americans.

## EXTEND DRIVE TO RAISE FUND

### Chest Workers Ask For More Time to Finish Task

By WYATT BROWN  
The Community Chest campaign for 1939 was supposed to have finished raising its budget for the year yesterday, but due to repeated reports from solicitors that they have been unable to finish their lists.

W. A. Ryan, general chairman of the 1939 drive, announced today that the time would be extended. Two thousand seven hundred dollars has been raised to noon Saturday with only fourteen of the twenty-eight canvassers reporting.

Mr. Ryan requests that all canvassers report even if they are not through. He is of the opinion that people want to make donations and have not been given the opportunity. One donor called the campaign office located at the Service League Thrift Shop over Key Brown Drug store on Five points and asked that someone come get his donation for this year.

It is no indictment of the present canvassers that they are slow in turning in. They have been given unusually large assignments since so few seem to feel the obligation of volunteering the help with the work of setting the soliciting done. Anyone willing to help solicit should call for an assignment; those asked to help were simply those who had volunteered in previous years.

"Unless more money is raised each participating agency will have to be cut and I still believe that the people of our community want the Boy Scouts, Girl Scouts, Salvation Army, Service League Thrift Shop and community relief to be carried on," declared Mr. Ryan in an interview today.

"Be Home At Nine."  
Atchison, Kas.—(AP)—Glancing over the city ordinances, Police Chief W. C. Linnville came across the old, almost forgotten, curfew law. He revived it for the Halloween period because "there's been too much devilry." The curfew ordinance says all children shall be home by 9 p. m.

E. Y. Floyd, AAA executive officer at State College, says November 21 of rain over north and central portions of the burley tobacco referendum in North Carolina and other burley states.

## Dies in Crash

### First Lieut. Mell M. Stephenson, Jr. (above), of Athens, Ga., was killed in the crash of an army pursuit plane in the Panama Canal Zone, the War Department announced. He was graduated from the University of Georgia in 1929.



First Lieut. Mell M. Stephenson, Jr. (above), of Athens, Ga., was killed in the crash of an army pursuit plane in the Panama Canal Zone, the War Department announced. He was graduated from the University of Georgia in 1929.

## AYDEN SCHOOL TO STAGE FAIR

### Much Interest Being Shown in November 10 Event

Plans already in progress indicate that the Ayden High School Fair, scheduled for November 10, will be of wide interest throughout the community.

Directed by the vocational classes, committees have been at work for several days, preparing to receive and display effectively the large number of exhibits expected to be entered. These exhibits will be classified and will include a variety of products representative of the school and community activities.

As in previous years, the commercial exhibits of the local business firms and the wide variety of educational exhibits, by the various departments of the school and the many civic and social organizations of Ayden, will transform the gymnasium into a veritable fairland.

The fair will officially open with an address by Hon. Kerr Scott, commissioner of agriculture for the state of North Carolina.

Commissioner Scott's address should not only be of interest to farmers but to all persons interested in the political, social and economic future of Eastern North Carolina.

Mule races and a gridiron clash between the fast-stepping Farmville High School team and the Ayden High Tornadoes will feature the afternoon program. At night a stunt program, with laugh provoking stunts by the major civic and social clubs of Ayden will be the chief entertainment. After this program Bingo will be in order for those who fancy this game. Who doesn't?

In the Fair Bulletin recently published at the high school, the following rules governing entries and awards are announced:

1. Entries shall be open to school children and adults.

2. Entries will not be accepted before Wednesday, November 8.

3. No entries shall be accepted after 4:30 p. m., Thursday, November 9, except livestock.

4. All entries must be properly labeled and tagged.

5. Each entry made by a student shall receive one (1) credit point.

6. Each blue ribbon shall allow twenty (20) credit points to one grade as designated by the exhibitor at the time of entry.

7. Each red ribbon shall allow ten (10) credit points to one grade as designated by the exhibitor at the time of entry.

8. No exhibits shall be removed until Saturday, November 11, at 9 a. m., except livestock.

9. Exhibits can be reclaimed only on the presentation of a receipt which shall be given at the time the entry is made.

10. All decisions of the judges shall be final.

11. The grade securing the most credit points for their home room, will receive an all day educational trip. (Place to be announced.)

Weather For The Week  
South Atlantic States—Fair first of week, slowly rising temperatures, rain over north and central portions middle period, fair and cooler near end of week.

## NORWAY HOLDS GERMAN CREW

### City of Flint Again Flying American Flag After Having Been in Hands of German Prize Crew For Month; Norwegian Government Turns Ship Over To American Crew

Bergen, Norway, Nov. 4.—(AP)—The American freighter City of Flint arrived here today, freed from her German captors by the decision of the Norwegian government to give the ship back to its American crew.

She came here from Haugsund, 75 miles shore the Norwegian coast, leaving behind the prize crew which was interned by Norway in the sudden climax to the ship's adventure as the war prize of a German sea raider.

Free again and flying the American flag after a saga of seizure and wandering in the North Atlantic for almost a month under an alien crew, she sailed from Haugsund before dawn.

German possession of the City of Flint, which began October 9, when a prize crew boarded her from the pocket battleship Deutschland ended after British warships had sighted her on her way toward Germany.

Her attempted dash for Germany ended as she approached a point where she would have had to cross the Baltic sea to reach Germany, blockaded by a cordon of British men of war. There had been no indication, however, the British planned any attempt to seize the freighter.

Disregard for Norwegian regulations apparently hastened the last chapter.

The American crew of the City of Flint needed medical attention when the ship anchored at Haugsund last night, but a Norwegian surgeon who looked at him said his

Continued on Page 6

## Plan Dedication Of Building At College

The new classroom building under construction at East Carolina Teachers College will be dedicated some time in February, at which time homecoming day will be observed at the college, according to present plans.

Miss Adelaide Bloxton, chairman of the homecoming committee, is directing plans for the affair.

Homecoming day was postponed from the fall quarter to the winter quarter in order to dedicate the new structure in connection with the event. It is believed to be the first time in the history of the institution that homecoming day is to be observed in the winter quarter.

## Snow Reported In Western Carolina

Charlotte, Nov. 4.—(AP)—Wintery weather made itself felt today in the mountain areas of North Carolina, where various points reported snow flurries.

More snow or rain was forecast for the region in the ensuing 24 hours.

Cloudy weather appeared to be fairly general over the state, but there was little of the unusual except at Burlington, which had both snow and hail.

Mount Airy had a snow that fell heavily, but melted rapidly, and North Wilkesboro also reported the first snow of the season for Watauga county.

## Weather Report

J. A. CLARK  
(Airways Observer)

TEMPERATURES  
High yesterday ..... 59  
Low yesterday ..... 39  
At 1:30 p. m. .... 45

PRECIPITATION  
(in inches)  
For 24 hrs. ending 1:30 p. m. .24  
Total for month ..... .68

BAROMETER  
(Pressure)  
7:30 last night ..... 30.36  
7:30 this morning ..... 30.30

Prevailing Winds and Velocity  
7:30 a. m. .... N-E  
1:30 p. m. .... N-E

Social and Personal

Social Calendar

Mrs. E. H. Gray of LaGrange is visiting her mother, Mrs. F. V. Johnston.

Miss Margaret Jones of Raleigh is visiting her sister, Mrs. T. K. Fountain, at 411 W. Fourth street, for the week-end.

Bancroft Moseley is attending the football game and Homecoming at Davidson College today.

Mrs. H. B. Litchfield of Aurora is visiting Mrs. Alton Baker.

Mrs. Henry Morris of Henderson spent yesterday with Mrs. W. W. Phelps.

Miss Mary Council Horne, member of the faculty of the Franklin city schools, is spending the week-end here with her parents, Mr. and Mrs. Charles O'H. Horne.

Captain and Mrs. T. K. Fountain are in Raleigh Friday night, where Capt. Fountain attended a conference of the 120th Infantry staff, of which he is a member. Capt. Fountain is supply officer of the 120th Infantry.

Mrs. J. E. Nobles is spending the day in Raleigh. Miss Lucy Nobles, a student at Peace Junior College, will accompany her home for the week-end.

Mrs. W. M. Carroll of Winterville is visiting her daughter, Mrs. Otis E. Willis in Beaufort.

Literature Department To Meet. The Literature Department of the Woman's Club will meet on Tuesday afternoon, November 7, at four o'clock with Mrs. Hicks-Corey. Mrs. L. B. Gowen and Mrs. Walter Cherry will be assisting hostesses.

U. D. C. To Meet. The George B. Singletary chapter of the U. D. C., will meet Thursday afternoon at 3:30 with Mrs. J. L. Fleming.

Mr. King Ill. Mr. O. B. (Buck) King is critically ill at his home on Washington, D. C., having suffered a stroke late Wednesday night.

Mr. King is a native of this county and a former resident of Greenville. He will be 78 the latter part of this month.

Masons To Meet. Greenville Lodge No. 284 A. F. and A. M., will hold a regular communication Monday evening at 7:30. All members are urged to come, and visitors welcome. Refreshments at 6:45.

G. P. Riemann, W. M. N. R. Joyner, Secy.

Play At Methodist Church. Tomorrow evening at the worship service at Jarvis Memorial Methodist Church, a one-act play "Where the Fires are Lighted," by Dorothy Clark Wilson, will be presented by the young people of the church.

The cast is as follows: David Williamson—Robert Muschowitz. Mary, his wife—Mabel Beaman. Connie, their daughter—Geraldine Harris.

Bruce, their son—Edward Conway. Joe Matthews, an acquaintance of Bruce—George Tyndall.

The play is being ably directed by Mrs. J. H. Rose. The public is cordially invited to be present.

Ill At Home. Little Alice Reide Goodall, small daughter of Mr. and Mrs. Rivers Goodall, is ill at her home on East Ninth street.

Mr. Harding To Teach Class. The Ellington Bible Class of Jarvis Memorial Methodist Sunday school will have as its guest teacher tomorrow morning Hon. F. C. Harding. All men of the church are invited to be present.

College Vesper Services. "Wasting Time" was the topic of a talk given last night by Miss Helen Gray Gilliam, E. C. T. C. senior, at the regular Friday night Young Women's Christian Association vesper services at the college.

Miss Gilliam stressed the importance of preparation for service to be rendered in the future, and spoke of the importance of keeping physically and spiritually fit, "for as school teachers our work is our life, and now is our period of preparation." She used as examples the lives of two young men. One used his time profitably and was well remembered for his usefulness; the other threw away wonderful opportunities because he wasted his time.

To Preach At F. W. B. Church. The Rev. H. E. Rodgers of Albemarle will preach at the Free Will Baptist Church of Greenville, Sunday morning at 11 o'clock and Sunday evening at 7:30. There will be special music and the public is cordially invited.

Methodist Circles To Meet. The Circles of the Woman's Missionary Society of Jarvis Memorial Methodist Church will meet Monday afternoon at 3:30 in the following homes:

No. 2, Mrs. Frank Wilson, Chm., with Mrs. E. H. Taft. No. 3, Mrs. John G. Fleming, Chm., with Mrs. F. P. Brooks. No. 4, Mrs. C. E. Oakley, Chm., with Mrs. A. C. Tadlock. No. 5, Mrs. S. B. Curran, Chm., with Mrs. T. A. Person. No. 6, Mrs. Jack Edwards, Chm., with Mrs. K. T. Futrell. No. 7, Mrs. H. C. Sugg, Chm., with Mrs. Edw. Batchelor. No. 1, Mrs. Billy Norman, Chm., will meet Monday night at 7:30 with Miss Louise Hooker. No. 8, Mrs. Hortense Moyer, Chm., will meet Monday night at eight o'clock with Mrs. J. D. Simpson.

3:30 p. m.—The George B. Singletary chapter of the U. D. C. will meet with Mrs. J. L. Fleming.

7:30 p. m.—The Presbyterian choir meets for practice.

8:00 p. m.—The B. and P. Woman's Club will meet in the Federal Art Gallery.

8:00 p. m.—International Relations department of the Woman's Club presents program on International Understanding at the club building.

FRIDAY 10:00 a. m.—Mission study class at Jarvis Memorial Methodist Church.

6:30 p. m.—The Kiwanis Club meets.

8:00 p. m.—Mrs. E. L. Henderson will entertain at bridge in honor of Miss Pearl Lautares, bride-elect.

SATURDAY 2:45 p. m.—Mrs. William Woodard, Jr., and Miss Mary Woodard will entertain at bridge, honoring Miss Louise Taylor and Miss Pearl Lautares, bride-elect.

Memorial Baptist Circles. The Circles of the W. M. S. of Memorial Baptist Church will meet Monday afternoon at 3:30, as follows:

J. B. Lawrence Circle, with Mrs. Charles Whedbee, 300 Elizabeth St.

Annie Armstrong Circle, with Mrs. Curtis Duvall, 106 S. Davis avenue.

Henrietta Hall Shuck Circle, with Mrs. R. F. King, Bethel highway.

Basil Lee Lockett Circle, with Mrs. Ruel Tyson, 400 Eastern street.

Emma Leachman Circle, with Mrs. Vance Perkins, 709 W. Third street.

Lottie Moore Circle, with Mrs. L. W. Tucker, 206 Greene St.

The Ina Belle Coleman Circle will meet Monday night at 7:45 with Mrs. R. E. Pittman on Summit St.

Entertain At Tea. At the home of Mrs. R. C. Stokes, Jr., the members of the Service League were entertained by the board of directors at a delightful tea on Friday afternoon at 4:30 o'clock, with the new members of the league as honor guests.

The home of Mrs. Stokes on Elizabeth street, was lovely with decorations of chrysanthemums and myriads of lighted tapers.

Little Lady Stokes met the guests at the front door. They were welcomed by Mrs. J. B. Cummings and Miss Hennie Long and presented to the receiving line composed of Mrs. Stokes, Mrs. Wyatt Brown and the new members, Miss Louise Hooker.

Miss Elizabeth Skinner, Mrs. John Adams, Jr., Mrs. Cecil Bilbro, Mrs. F. D. Duncan, Mrs. E. J. Garrett, Mrs. James Ficklen, Mrs. Reide Perkins, Mrs. J. Hampton Thomas, Mrs. T. I. Wagner, Mrs. Norman Warren, Mrs. Charles Whedbee, and Mrs. J. J. White.

Mrs. L. E. Babcock and Miss Anna Long received at the door of the sun room. In the sun-room, Mrs. A. J. Moore presented the callers to the following members of the advisory council of the league, Mesdames W. E. Hooker, E. W. Harvey, J. L. Hassell and J. H. Blount.

Mrs. H. L. Ormond and Mrs. J. C. Waldrop received at the living room door. Mrs. E. C. Wilkerson and Miss Bessie Brown invited the guests to the dining room, where at a beautifully appointed table, Mrs. R. M. Garrett and Mrs. W. L. Harrington poured tea. They were assisted in serving by Mrs. Lee Folger, Mrs. J. T. Little and Mrs. J. B. Hawes.

Party For E. C. T. C. Graduates. At the party for the graduates of East Carolina Teachers College living in Greenville given last night in Fleming Hall by the Faculty Advisory committee of the Alumnae Association, the Greenville chapter of the Alumnae Association was reorganized, with Mrs. Harry Forbes, formerly Miss Martha Scoville, as president; and Mrs. Henry Harrell, formerly Miss Rosalie Lang, as vice-president.

Other officers were Miss Mamie Ruth Tunstall, secretary; Mrs. R. E. Sellars (Da Jones Andrews), treasurer; and Mrs. Tyson Bilbro (Myrtle Gray Hodges), reporter.

Around fifty graduates were present. They were welcomed by Miss Maria Graham, chairman of the faculty committee, who presided at the informal program.

President Meadows talked briefly on changes on the campus that should make graduates in Greenville want to visit the grounds—to meet the new teachers, walk on the new "marble" floors of the kitchen and hardwood floors of the Austin, and go through the new building. He also spoke of the need of the college for the influence of organized alumnae, especially those who are in Greenville and know the college.

Dr. E. L. Henderson spoke on what the alumnae can do; be members of the association, give information about addresses and lives of alumnae, and help with Homecoming Day.

Miss Ruth White explained how, with faculty supervision, India Hill, N. Y. A. worker, is carrying on as much as possible—until she graduates at Christmas—the needed work in the Alumnae Association office; and asked for addresses and news items about alumnae to be sent to Miss Hill at the college.

Miss Graham reported on the present prospect of a full-time secretary for the association and appealed to Greenville alumnae to support the plan.

The spontaneous motion to reorganize the local chapter, which has been inactive for the past two years, put Miss Elizabeth Smith, former president of the local chapter, on the floor as temporary chairman while the officers named above were elected.

Refreshments were served at the close of the hour, with Mrs. Mead-

Thursday afternoon. Several Pitt Countians have homes there. It is interesting to note that most of them are "tobacco minded" at Penderlea as they are in the county.

Achievement Day. Next Wednesday is Achievement Day for H. D. women. The eleventh meeting will be held in the Greenville Woman's Club building at 10:30 a. m. F. H. Jeter, agricultural editor at State College, will be the guest speaker. All club members and their friends are especially invited to be present. Letters are being mailed explaining lunch plans.

Club Schedule Next Week. Greenville H. D. Club—Tuesday at 3:30 p. m., in agricultural building. Achievement Day Wednesday, 10:30 a. m., in Greenville Woman's Club building.

Farmville H. D. Club—Thursday, 2:30 p. m., in club building. Littlefield H. D. Club—Friday, 2:30 p. m., with Mrs. Eugenia Hart.

Transplanting and Care of Shrubs. The following notes from John H. Harris, Extension Landscape Specialist, will be helpful:

Digging the Plant—If the plant to be moved is a deciduous plant (drops its foliage in the winter) it is not necessary to remove a ball of earth with the plant. Care should be taken, however, to remove all the roots possible with the plant and avoid bruising the roots as much as possible. It will be found helpful in moving a native plant to dig a trench around the plant one season before moving it. This trench should be dug 18-24 inches deep, the distance from the plant varying with the size of the plant. The object in digging the trench is to stimulate the plant to grow lots of fine roots near its base.

After the plant is removed from the soil it should be immediately planted in its new position. If it is to be transferred some distance before replanting it should be packed in shavings or at least a wet sack kept around its roots. It is very essential that the roots be kept moist until the plant is reset.

Evergreens should be treated similarly to deciduous shrubs except they originally and the soil stamped earth. A two to six foot native plant

is usually the best size of move. Preparation of the Hole—The hole should be dug considerably larger and deeper than is necessary to take care of the longest roots. This surplus space should be filled with a good grade of topsoil. In digging the hole the topsoil should be piled on one side of the hole and the subsoil on the other, only the topsoil should be used in filling the hole.

Care of Special Plants—Most trees and shrubs should be cultivated regularly until they are considerable size. They should be treated as a crop plant and given similar growing conditions. There are a few exceptions, however, among them are the ericaceous or acid loving plants such as azalea, Mt. Laurel and Rhododendrons. These plants should not be worked around, but should be mulched with leaf mold or peat moss to keep down vegetation. These plants will also require special fertilization. A good fertilizer to use on such plants is one part dried blood or tankage, one part acid phosphate, one part potash and one part magnesia. To increase the soil acidity peat and leaf mold should be added or small amounts of aluminum sulfate. These acid loving plants should be given their natural growing conditions—usually a well drained but moist soil, partial shade and an acid soil.

Time to Transplant—As a general rule more people have success moving shrubs and trees during the dormant season preferably in November or December. A few plants have special times to be moved, but you are almost sure to be right by moving the plant while it is dormant.

Fertilizing and Cutting Back—The amount to be pruned from a plant when transplanted will depend of course on the root system taken up with the plant. Enough top should be removed to balance the plant against the loss of roots, and one-third to one-half of the plant should usually be removed to make this balanced condition.

Because of the inadequate root system, trees and shrubs should be fertilized at the time of transplanting or early the next spring. A heavy application of well rotted barnyard manure is excellent and should be applied as a mulch or perhaps worked lightly into the soil at the time of transplanting. If a commercial fertilizer such as 6-8-6 or cotton

seed or bone meal is used it should be applied just before growth starts in the spring. Do not forget to continue fertilizing your plants, especially where trees are growing near them. Many of our shrubs and trees are starving to death and this makes an ideal plant for insects and plant diseases to flourish on.

Care of Special Plants—Most trees and shrubs should be cultivated regularly until they are considerable size. They should be treated as a crop plant and given similar growing conditions. There are a few exceptions, however, among them are the ericaceous or acid loving plants such as azalea, Mt. Laurel and Rhododendrons. These plants should not be worked around, but should be mulched with leaf mold or peat moss to keep down vegetation. These plants will also require special fertilization. A good fertilizer to use on such plants is one part dried blood or tankage, one part acid phosphate, one part potash and one part magnesia. To increase the soil acidity peat and leaf mold should be added or small amounts of aluminum sulfate. These acid loving plants should be given their natural growing conditions—usually a well drained but moist soil, partial shade and an acid soil.

Time to Transplant—As a general rule more people have success moving shrubs and trees during the dormant season preferably in November or December. A few plants have special times to be moved, but you are almost sure to be right by moving the plant while it is dormant.

Fertilizing and Cutting Back—The amount to be pruned from a plant when transplanted will depend of course on the root system taken up with the plant. Enough top should be removed to balance the plant against the loss of roots, and one-third to one-half of the plant should usually be removed to make this balanced condition.

Because of the inadequate root system, trees and shrubs should be fertilized at the time of transplanting or early the next spring. A heavy application of well rotted barnyard manure is excellent and should be applied as a mulch or perhaps worked lightly into the soil at the time of transplanting. If a commercial fertilizer such as 6-8-6 or cotton

seed or bone meal is used it should be applied just before growth starts in the spring. Do not forget to continue fertilizing your plants, especially where trees are growing near them. Many of our shrubs and trees are starving to death and this makes an ideal plant for insects and plant diseases to flourish on.

Care of Special Plants—Most trees and shrubs should be cultivated regularly until they are considerable size. They should be treated as a crop plant and given similar growing conditions. There are a few exceptions, however, among them are the ericaceous or acid loving plants such as azalea, Mt. Laurel and Rhododendrons. These plants should not be worked around, but should be mulched with leaf mold or peat moss to keep down vegetation. These plants will also require special fertilization. A good fertilizer to use on such plants is one part dried blood or tankage, one part acid phosphate, one part potash and one part magnesia. To increase the soil acidity peat and leaf mold should be added or small amounts of aluminum sulfate. These acid loving plants should be given their natural growing conditions—usually a well drained but moist soil, partial shade and an acid soil.

Time to Transplant—As a general rule more people have success moving shrubs and trees during the dormant season preferably in November or December. A few plants have special times to be moved, but you are almost sure to be right by moving the plant while it is dormant.

Fertilizing and Cutting Back—The amount to be pruned from a plant when transplanted will depend of course on the root system taken up with the plant. Enough top should be removed to balance the plant against the loss of roots, and one-third to one-half of the plant should usually be removed to make this balanced condition.

Because of the inadequate root system, trees and shrubs should be fertilized at the time of transplanting or early the next spring. A heavy application of well rotted barnyard manure is excellent and should be applied as a mulch or perhaps worked lightly into the soil at the time of transplanting. If a commercial fertilizer such as 6-8-6 or cotton

seed or bone meal is used it should be applied just before growth starts in the spring. Do not forget to continue fertilizing your plants, especially where trees are growing near them. Many of our shrubs and trees are starving to death and this makes an ideal plant for insects and plant diseases to flourish on.

Care of Special Plants—Most trees and shrubs should be cultivated regularly until they are considerable size. They should be treated as a crop plant and given similar growing conditions. There are a few exceptions, however, among them are the ericaceous or acid loving plants such as azalea, Mt. Laurel and Rhododendrons. These plants should not be worked around, but should be mulched with leaf mold or peat moss to keep down vegetation. These plants will also require special fertilization. A good fertilizer to use on such plants is one part dried blood or tankage, one part acid phosphate, one part potash and one part magnesia. To increase the soil acidity peat and leaf mold should be added or small amounts of aluminum sulfate. These acid loving plants should be given their natural growing conditions—usually a well drained but moist soil, partial shade and an acid soil.

Time to Transplant—As a general rule more people have success moving shrubs and trees during the dormant season preferably in November or December. A few plants have special times to be moved, but you are almost sure to be right by moving the plant while it is dormant.

Fertilizing and Cutting Back—The amount to be pruned from a plant when transplanted will depend of course on the root system taken up with the plant. Enough top should be removed to balance the plant against the loss of roots, and one-third to one-half of the plant should usually be removed to make this balanced condition.

Because of the inadequate root system, trees and shrubs should be fertilized at the time of transplanting or early the next spring. A heavy application of well rotted barnyard manure is excellent and should be applied as a mulch or perhaps worked lightly into the soil at the time of transplanting. If a commercial fertilizer such as 6-8-6 or cotton

seed or bone meal is used it should be applied just before growth starts in the spring. Do not forget to continue fertilizing your plants, especially where trees are growing near them. Many of our shrubs and trees are starving to death and this makes an ideal plant for insects and plant diseases to flourish on.

Care of Special Plants—Most trees and shrubs should be cultivated regularly until they are considerable size. They should be treated as a crop plant and given similar growing conditions. There are a few exceptions, however, among them are the ericaceous or acid loving plants such as azalea, Mt. Laurel and Rhododendrons. These plants should not be worked around, but should be mulched with leaf mold or peat moss to keep down vegetation. These plants will also require special fertilization. A good fertilizer to use on such plants is one part dried blood or tankage, one part acid phosphate, one part potash and one part magnesia. To increase the soil acidity peat and leaf mold should be added or small amounts of aluminum sulfate. These acid loving plants should be given their natural growing conditions—usually a well drained but moist soil, partial shade and an acid soil.

Time to Transplant—As a general rule more people have success moving shrubs and trees during the dormant season preferably in November or December. A few plants have special times to be moved, but you are almost sure to be right by moving the plant while it is dormant.

Fertilizing and Cutting Back—The amount to be pruned from a plant when transplanted will depend of course on the root system taken up with the plant. Enough top should be removed to balance the plant against the loss of roots, and one-third to one-half of the plant should usually be removed to make this balanced condition.

Because of the inadequate root system, trees and shrubs should be fertilized at the time of transplanting or early the next spring. A heavy application of well rotted barnyard manure is excellent and should be applied as a mulch or perhaps worked lightly into the soil at the time of transplanting. If a commercial fertilizer such as 6-8-6 or cotton

seed or bone meal is used it should be applied just before growth starts in the spring. Do not forget to continue fertilizing your plants, especially where trees are growing near them. Many of our shrubs and trees are starving to death and this makes an ideal plant for insects and plant diseases to flourish on.

Care of Special Plants—Most trees and shrubs should be cultivated regularly until they are considerable size. They should be treated as a crop plant and given similar growing conditions. There are a few exceptions, however, among them are the ericaceous or acid loving plants such as azalea, Mt. Laurel and Rhododendrons. These plants should not be worked around, but should be mulched with leaf mold or peat moss to keep down vegetation. These plants will also require special fertilization. A good fertilizer to use on such plants is one part dried blood or tankage, one part acid phosphate, one part potash and one part magnesia. To increase the soil acidity peat and leaf mold should be added or small amounts of aluminum sulfate. These acid loving plants should be given their natural growing conditions—usually a well drained but moist soil, partial shade and an acid soil.

Time to Transplant—As a general rule more people have success moving shrubs and trees during the dormant season preferably in November or December. A few plants have special times to be moved, but you are almost sure to be right by moving the plant while it is dormant.

Fertilizing and Cutting Back—The amount to be pruned from a plant when transplanted will depend of course on the root system taken up with the plant. Enough top should be removed to balance the plant against the loss of roots, and one-third to one-half of the plant should usually be removed to make this balanced condition.

Because of the inadequate root system, trees and shrubs should be fertilized at the time of transplanting or early the next spring. A heavy application of well rotted barnyard manure is excellent and should be applied as a mulch or perhaps worked lightly into the soil at the time of transplanting. If a commercial fertilizer such as 6-8-6 or cotton

seed or bone meal is used it should be applied just before growth starts in the spring. Do not forget to continue fertilizing your plants, especially where trees are growing near them. Many of our shrubs and trees are starving to death and this makes an ideal plant for insects and plant diseases to flourish on.

Care of Special Plants—Most trees and shrubs should be cultivated regularly until they are considerable size. They should be treated as a crop plant and given similar growing conditions. There are a few exceptions, however, among them are the ericaceous or acid loving plants such as azalea, Mt. Laurel and Rhododendrons. These plants should not be worked around, but should be mulched with leaf mold or peat moss to keep down vegetation. These plants will also require special fertilization. A good fertilizer to use on such plants is one part dried blood or tankage, one part acid phosphate, one part potash and one part magnesia. To increase the soil acidity peat and leaf mold should be added or small amounts of aluminum sulfate. These acid loving plants should be given their natural growing conditions—usually a well drained but moist soil, partial shade and an acid soil.

Time to Transplant—As a general rule more people have success moving shrubs and trees during the dormant season preferably in November or December. A few plants have special times to be moved, but you are almost sure to be right by moving the plant while it is dormant.

Fertilizing and Cutting Back—The amount to be pruned from a plant when transplanted will depend of course on the root system taken up with the plant. Enough top should be removed to balance the plant against the loss of roots, and one-third to one-half of the plant should usually be removed to make this balanced condition.

Because of the inadequate root system, trees and shrubs should be fertilized at the time of transplanting or early the next spring. A heavy application of well rotted barnyard manure is excellent and should be applied as a mulch or perhaps worked lightly into the soil at the time of transplanting. If a commercial fertilizer such as 6-8-6 or cotton

seed or bone meal is used it should be applied just before growth starts in the spring. Do not forget to continue fertilizing your plants, especially where trees are growing near them. Many of our shrubs and trees are starving to death and this makes an ideal plant for insects and plant diseases to flourish on.

Care of Special Plants—Most trees and shrubs should be cultivated regularly until they are considerable size. They should be treated as a crop plant and given similar growing conditions. There are a few exceptions, however, among them are the ericaceous or acid loving plants such as azalea, Mt. Laurel and Rhododendrons. These plants should not be worked around, but should be mulched with leaf mold or peat moss to keep down vegetation. These plants will also require special fertilization. A good fertilizer to use on such plants is one part dried blood or tankage, one part acid phosphate, one part potash and one part magnesia. To increase the soil acidity peat and leaf mold should be added or small amounts of aluminum sulfate. These acid loving plants should be given their natural growing conditions—usually a well drained but moist soil, partial shade and an acid soil.

Time to Transplant—As a general rule more people have success moving shrubs and trees during the dormant season preferably in November or December. A few plants have special times to be moved, but you are almost sure to be right by moving the plant while it is dormant.

Fertilizing and Cutting Back—The amount to be pruned from a plant when transplanted will depend of course on the root system taken up with the plant. Enough top should be removed to balance the plant against the loss of roots, and one-third to one-half of the plant should usually be removed to make this balanced condition.

Because of the inadequate root system, trees and shrubs should be fertilized at the time of transplanting or early the next spring. A heavy application of well rotted barnyard manure is excellent and should be applied as a mulch or perhaps worked lightly into the soil at the time of transplanting. If a commercial fertilizer such as 6-8-6 or cotton

seed or bone meal is used it should be applied just before growth starts in the spring. Do not forget to continue fertilizing your plants, especially where trees are growing near them. Many of our shrubs and trees are starving to death and this makes an ideal plant for insects and plant diseases to flourish on.

Care of Special Plants—Most trees and shrubs should be cultivated regularly until they are considerable size. They should be treated as a crop plant and given similar growing conditions. There are a few exceptions, however, among them are the ericaceous or acid loving plants such as azalea, Mt. Laurel and Rhododendrons. These plants should not be worked around, but should be mulched with leaf mold or peat moss to keep down vegetation. These plants will also require special fertilization. A good fertilizer to use on such plants is one part dried blood or tankage, one part acid phosphate, one part potash and one part magnesia. To increase the soil acidity peat and leaf mold should be added or small amounts of aluminum sulfate. These acid loving plants should be given their natural growing conditions—usually a well drained but moist soil, partial shade and an acid soil.

Time to Transplant—As a general rule more people have success moving shrubs and trees during the dormant season preferably in November or December. A few plants have special times to be moved, but you are almost sure to be right by moving the plant while it is dormant.

Fertilizing and Cutting Back—The amount to be pruned from a plant when transplanted will depend of course on the root system taken up with the plant. Enough top should be removed to balance the plant against the loss of roots, and one-third to one-half of the plant should usually be removed to make this balanced condition.

Because of the inadequate root system, trees and shrubs should be fertilized at the time of transplanting or early the next spring. A heavy application of well rotted barnyard manure is excellent and should be applied as a mulch or perhaps worked lightly into the soil at the time of transplanting. If a commercial fertilizer such as 6-8-6 or cotton

seed or bone meal is used it should be applied just before growth starts in the spring. Do not forget to continue fertilizing your plants, especially where trees are growing near them. Many of our shrubs and trees are starving to death and this makes an ideal plant for insects and plant diseases to flourish on.

Care of Special Plants—Most trees and shrubs should be cultivated regularly until they are considerable size. They should be treated as a crop plant and given similar growing conditions. There are a few exceptions, however, among them are the ericaceous or acid loving plants such as azalea, Mt. Laurel and Rhododendrons. These plants should not be worked around, but should be mulched with leaf mold or peat moss to keep down vegetation. These plants will also require special fertilization. A good fertilizer to use on such plants is one part dried blood or tankage, one part acid phosphate, one part potash and one part magnesia. To increase the soil acidity peat and leaf mold should be added or small amounts of aluminum sulfate. These acid loving plants should be given their natural growing conditions—usually a well drained but moist soil, partial shade and an acid soil.

Time to Transplant—As a general rule more people have success moving shrubs and trees during the dormant season preferably in November or December. A few plants have special times to be moved, but you are almost sure to be right by moving the plant while it is dormant.

Fertilizing and Cutting Back—The amount to be pruned from a plant when transplanted will depend of course on the root system taken up with the plant. Enough top should be removed to balance the plant against the loss of roots, and one-third to one-half of the plant should usually be removed to make this balanced condition.

Because of the inadequate root system, trees and shrubs should be fertilized at the time of transplanting or early the next spring. A heavy application of well rotted barnyard manure is excellent and should be applied as a mulch or perhaps worked lightly into the soil at the time of transplanting. If a commercial fertilizer such as 6-8-6 or cotton

seed or bone meal is used it should be applied just before growth starts in the spring. Do not forget to continue fertilizing your plants, especially where trees are growing near them. Many of our shrubs and trees are starving to death and this makes an ideal plant for insects and plant diseases to flourish on.

Care of Special Plants—Most trees and shrubs should be cultivated regularly until they are considerable size. They should be treated as a crop plant and given similar growing conditions. There are a few exceptions, however, among them are the ericaceous or acid loving plants such as azalea, Mt. Laurel and Rhododendrons. These plants should not be worked around, but should be mulched with leaf mold or peat moss to keep down vegetation. These plants will also require special fertilization. A good fertilizer to use on such plants is one part dried blood or tankage, one part acid phosphate, one part potash and one part magnesia. To increase the soil acidity peat and leaf mold should be added or small amounts of aluminum sulfate. These acid loving plants should be given their natural growing conditions—usually a well drained but moist soil, partial shade and an acid soil.

Time to Transplant—As a general rule more people have success moving shrubs and trees during the dormant season preferably in November or December. A few plants have special times to be moved, but you are almost sure to be right by moving the plant while it is dormant.

Fertilizing and Cutting Back—The amount to be pruned from a plant when transplanted will depend of course on the root system taken up with the plant. Enough top should be removed to balance the plant against the loss of roots, and one-third to one-half of the plant should usually be removed to make this balanced condition.

Because of the inadequate root system, trees and shrubs should be fertilized at the time of transplanting or early the next spring. A heavy application of well rotted barnyard manure is excellent and should be applied as a mulch or perhaps worked lightly into the soil at the time of transplanting. If a commercial fertilizer such as 6-8-6 or cotton

seed or bone meal is used it should be applied just before growth starts in the spring. Do not forget to continue fertilizing your plants, especially where trees are growing near them. Many of our shrubs and trees are starving to death and this makes an ideal plant for insects and plant diseases to flourish on.

Care of Special Plants—Most trees and shrubs should be cultivated regularly until they are considerable size. They should be treated as a crop plant and given similar growing conditions. There are a few exceptions, however, among them are the ericaceous or acid loving plants such as azalea, Mt. Laurel and Rhododendrons. These plants should not be worked around, but should be mulched with leaf mold or peat moss to keep down vegetation. These plants will also require special fertilization. A good fertilizer to use on such plants is one part dried blood or tankage, one part acid phosphate, one part potash and one part magnesia. To increase the soil acidity peat and leaf mold should be added or small amounts of aluminum sulfate. These acid loving plants should be given their natural growing conditions—usually a well drained but moist soil, partial shade and an acid soil.

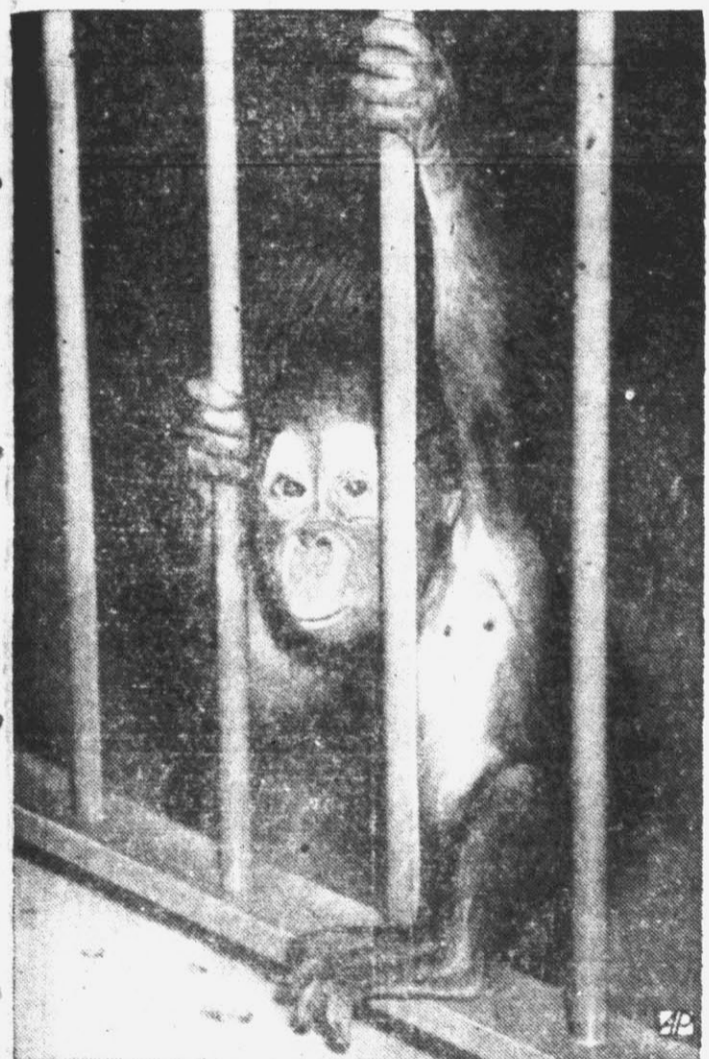
Time to Transplant—As a general rule more people have success moving shrubs and trees during the dormant season preferably in November or December. A few plants have special times to be moved, but you are almost sure to be right by moving the plant while it is dormant.

Fertilizing and

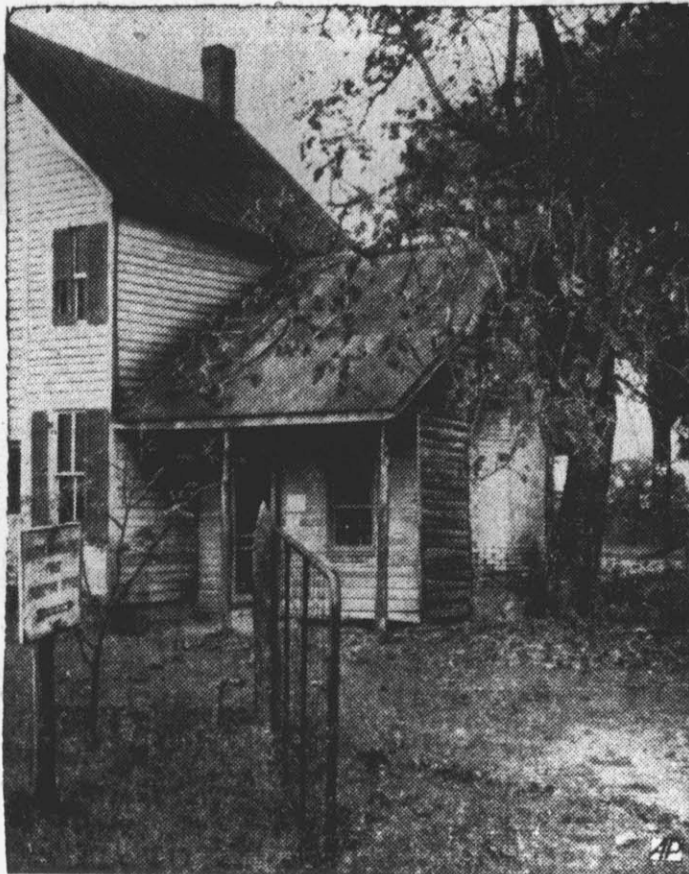
# ASSOCIATED PRESS PICTURE NEWS



**FOOLED YOU THAT TIME**—Though it looks like a memento of Europe's war, sandbagged for air-raid protection, this statue is actually "Mississippi," symbolizing the "Father of Waters" in front of Union station at St. Louis. Carl Milles, famous Swedish sculptor, did the figure—part of the "Wedding of the Rivers" statuary to be unveiled in December, 1939.



**NOT HAVING ANY FUN**—When Betsy's cup of sorrow is full, this baby orang-utan at St. Louis zoo looks like this.



**WHEN FATHER WAS A BOY**—Sacred to the George Washington legend of truthfulness concerning a chopped cherry tree is the 470-acre farm near Fredericksburg, Va., where the "Father of his country" roamed as a boy and, in later years, used above building as a workshop. This farm, where the cherry tree supposedly was felled, is to be sold at public auction.



**SMILE THE WHILE**—Six-year-old Frank Horn of Malvern, N. Y., was the envy of 16 other passengers aboard the Chilean motorship Copiapo, for Frank got to pose with the captain, Roberto Munoz, complete with cap, buttons—and grin. Frank was one of 17 passengers aboard the ship which inaugurated a passenger service between Philadelphia and South America.



**PENSION PLAN**—Ohio voters on Nov. 7 will consider a plan advanced by the Rev. Herbert S. Bigelow (above), former congressman, guaranteeing a monthly income of \$50 for single persons, \$80 for married couples over 60 years of age.



**SPRINT MAY MEAN LIFE OR DEATH**—Into the "disaster bus," newest emergency ambulance unit at New York's Bellevue hospital, hurry doctors and nurses called out on an emergency. The boxes are amply stocked with medical supplies apt to be needed on this errand of mercy. The "disaster bus," which carries 13 doctors and 13 nurses, rolls at a moment's notice.

## PLUMS OF FAVOR FALL TO VON RIBBENTROP



**SALESMAN**—Sun of Hitler's current favor is reported to be shining on suave, blue-eyed Joachim von Ribbentrop, who sold champagne before he became a Nazi diplomat.

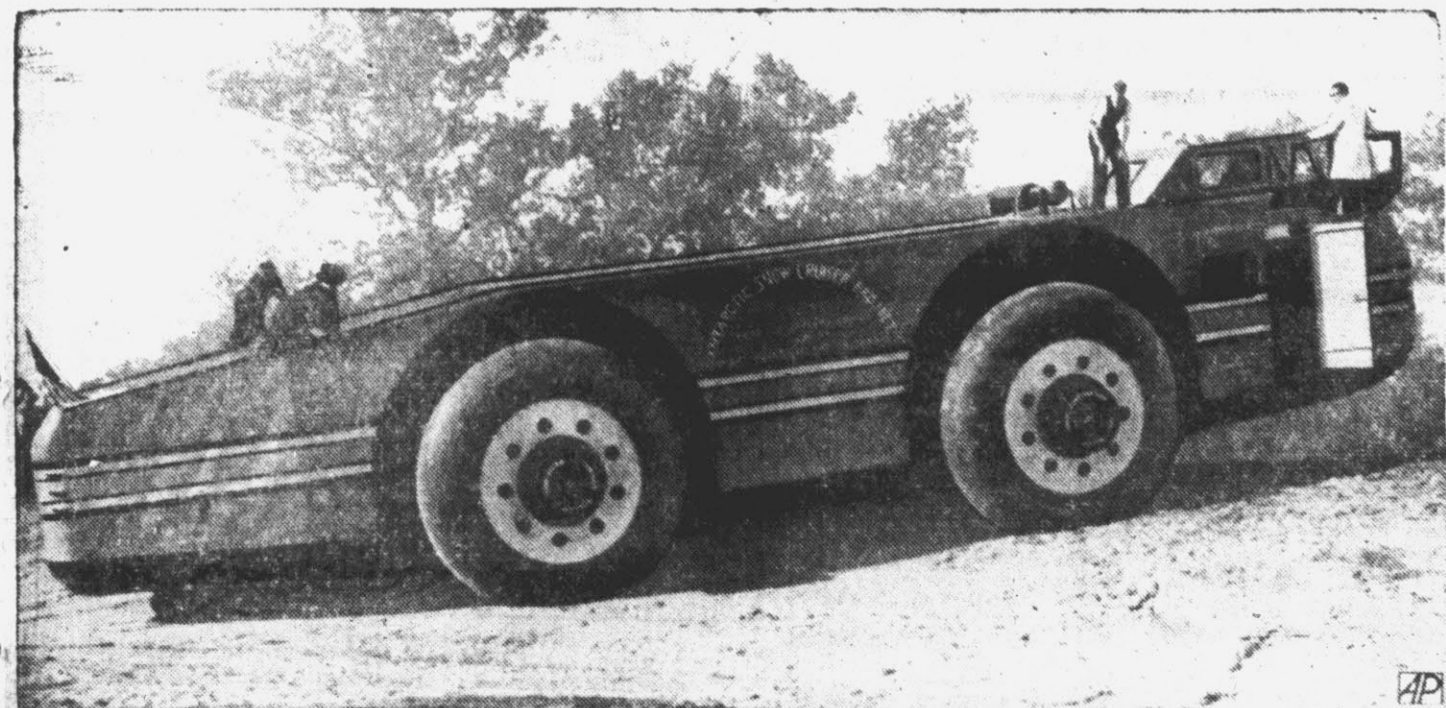
**'BEAU BRUMMEL' IN BERLIN**—The arm with which Germany's well-tailored foreign minister, Joachim von Ribbentrop, created a sensation in London in February, 1937, when he gave a Nazi salute on being presented to King George VI, was still making history in 1939. This year found him busy signing documents, the most important being that of Aug. 24 when (wearing "ivories") he signed the Russo-German pact, voiding Germany's anti-comintern. His Oct. 25 Danzig speech predicted "war to the end," dealt gently with France, professed friendship for U. S.



**WATER TO SPARE**—While some areas of United States need rain to save plants from further drought damage, New Zealand has more than enough for her needs, the flooded Manawatu river having swept over farm lands (above) near Shannon. Mayor LaGuardia, checking on low levels of reservoirs feeding Manhattan, recently urged New Yorkers not to waste any water.



**2,500 (DON'T COUNT 'EM!)**—What more pleasant task could there be, than that of Earl Thacker (left) and C. J. Pietsch, busy dropping 2,500 leis about pretty Lillias Gilbert at the real estate boards national convention in Los Angeles? Both men are from Honolulu, and the leis were part of a colorful invitation to the realtors to visit Hawaii.



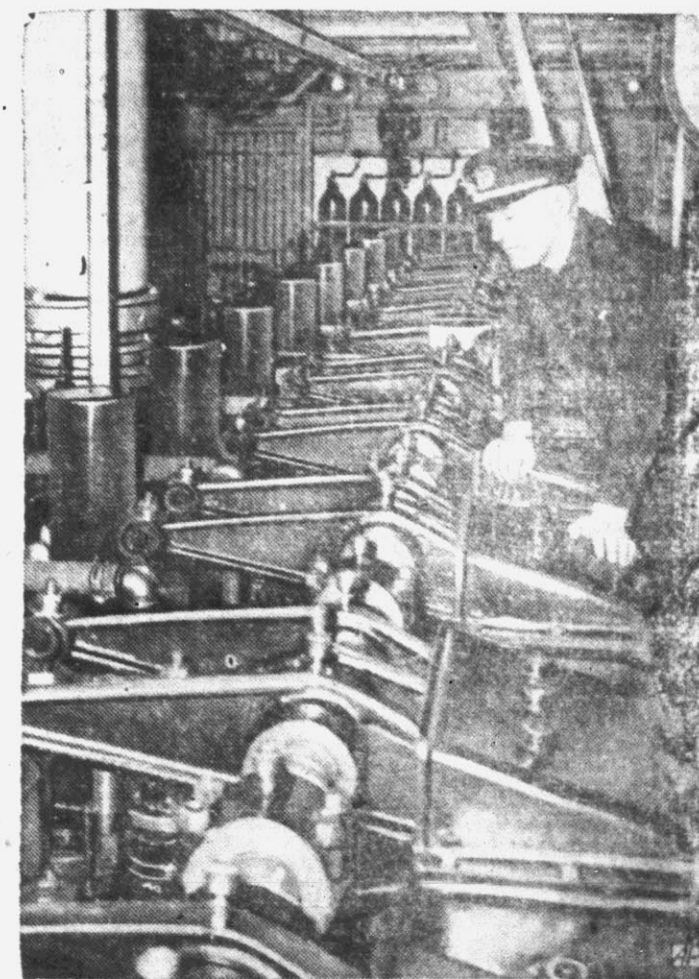
**ANTARCTICA WILL END TRAFFIC WOES OF 'ICE BUGGY'**—After its construction in Chicago and test runs on Indiana's sand dunes where it's shown, the huge snow cruiser built for Admiral Byrd's polar expedition ran afoul of traffic dangers both in Indiana and Ohio. Near Columbia City, Ind., the snow cruiser and a truck collided with slight damages. Near Lima, O., it struck a bridge and angled off into a gully. The cruiser was bound for Boston, departure port for the Antarctic expedition.



**POLAR SKIPPER**—Chilly prospects are ahead for Capt. Stafford T. L. Whitlam (above). He's skipper of the "North Star," U. S. department of interior motorship that'll accompany the Byrd expedition on its survey trip to the Antarctic.



**ON BYRD TRIP**—Franklin Johnson, full-blooded Eskimo from St. Michaels, Alaska, will be one of crew members aboard the "North Star" on its trip to Antarctica with Byrd party. Johnson wears a bird feather jacket to keep him warm.



**POWER FOR 'NORTH STAR'**—There's a lot of power here, thinks Chief Engineer Herman Sanwick of the motorship "North Star" as he examines the valve assembly of the longest Diesel engine in any ship in the U. S. It is 35 feet long, weighs 110 tons, has 1,525 horsepower and will push the "North Star" at 12 knots when ship leaves Boston with Byrd party.

The Daily Reflector

Every Afternoon Except Sunday... DAVID J. WHITCHARD, Jr. Owner and Publisher.

Entered at the Post Office at Greenville, N. C., as second class mail matter.

MEMBER ASSOCIATED PRESS... The Associated Press is exclusively entitled to use for publication all news dispatches credited to it or not otherwise credited to this paper and also the local news published herein.

NATIONAL ADVERTISING REPRESENTATIVES... Thomas F. Clark Co., Inc., New York, Chicago, Indianapolis, Philadelphia, Kansas City, Richmond.



Washington Daybook

Washington—The radio industry is confronted with a tough public relations problem since it adopted the code under which it refuses to sell time for the broadcasting of controversial speeches.

John L. Lewis and his Congress of Industrial Organizations and the group interested in Father Coughlin's broadcasts are piling up complaints. Particularly has the CIO charged the National Association of Broadcasters, sponsor of the new code, with an attempt to destroy freedom of speech.

For the broadcasters, it is a thorny case. They announced that their purpose was to protect freedom of speech, not to destroy it. They proposed in their code, effective October 1, to do two things:

1. Sell no more time for discussion of controversial issues (except to politicians, in political campaigns).

2. Organize "forums" where time would be given free to all sides to argue questions of public interest. The station owners reserved to themselves the right to determine what are "questions of public interest."

Their position is that if they sell radio time for controversial discussions, the people with money will hog the time, to the disadvantage of people with a good case but no money.

CIO Broadcasts Ended—Here is a typical reaction. Station WJW of Akron, operated by Miss Edythe Fern Melrose, has been selling time regularly for CIO broadcasts. Under terms of the code, she has told CIO that she won't any more.

"Tain't fair" says CIO, and announces plans to take the case to the federal communications commission. The protest of the labor group is that air time is sold to other industrialists over the country to build up public good will for their products and for industry. The labor group, however, must wait until radio awards it some free time on a "forum" where the industrialists share alike the right to hit back.

Miss Melrose of Akron's WJW says she is already giving way ten free periods of 15 minutes each daily to such organizations as the American Legion, community chest, ministerial association, WPA and Federal Housing and naturally won't have an unlimited amount of time to give away to "forums" on CIO issues.

Case Of Father Coughlin—The case of Father Coughlin has not become nearly so heated out in the open but is seething underneath. Time on the air of more than 40 stations is bought for Father Coughlin's weekly speeches. Broadcasters, Inc., handles the business. The National Association of Broadcasters finds Coughlin is exactly a case in point. No one would deny he talks on controversial issues.

Nor is the argument all on one side. The Coughlin broadcast is a plump piece of business for stations sharing in it. For instance, the 17 stations on the Colonial network in New England get a sum estimated as high as \$50,000 a year. Yet the network stations are members of the National Association whose code says "no."

On the other hand, the broadcasters recognize Father Coughlin as a subject of "public interest" and so entitled to free time on the air. How much? The board of directors of the association is discussing that now, along with other questions raised by Father Coughlin's agents.

Just to help tangle up the case the American Federation of Labor, in contrast to CIO, thinks the new radio code is excellent.

"What do you have to show that you represent the state of North Carolina?" sternly asked his honor. Braswell was stumped. He had everything except what he really needed. But he talked himself out of the jam, got his man and brought him safely back to North Carolina.

The Creeping Man

YESTERDAY: McBain suggests that the love letters in the box may be code, says that Miss Lacey is bitter because Devoe didn't marry her, and denies seeing the gray jell hat. Mrs. McBain saw the hat, looks for it, but can't find it.

Chapter 25 Dark Of The Moon

THE dark figure broke away from the hedge, slowly, cautiously, and crept on all fours for the trees. With a bound, Michael reached it and threw himself upon it, hardly knowing what he expected to find beneath his hands as he peered down in the darkness.

"Ye'er chokin' me," he heard, and gasped in surprise. "Higgins!"

"It's me," the little man said sulenly, clambering to his feet as Michael released him. "What the devil were you doing sneaking around in the dark?"

"I wasn't doin' nothin'." "Oh, you weren't? Well, it's a damn poor place to do it in. What are you up to?"

"I'm not up to nothin'." Higgins was truculent. Michael was suddenly angry. He reached out, took Higgins' collar and shook him as if he had been the rabbit Bunny had called him. "You tell me what you were doing sneaking around my yard in the middle of the night, or I'll shake the daylight out of you," he said wrathfully.

But Higgins, mentally at least, was firm. "I said I wasn't doin' nothin' and I wasn't."

Michael dragged him over to the place beside the hedge from which he had crawled. Still holding Higgins' collar he bent over and ran his hand over the ground. There was nothing. Higgins held one arm slightly behind himself. Michael noticed it, grabbed it, and took a trowel from resisting fingers.

"For the love of Pete," he said in exasperation. "A trowel! What are you doing, transplanting in the dark of the moon?"

Higgins maintained a sullen silence. Michael thought carefully. He looked over the hedge. Just there, on the other side, was one of the so-called rockeries, placed there yesterday by this same Higgins. Rockeries? Piles of stones, rather. Now what...

"So," he said, regaining his command of the situation. "So you have reasons, my friend, for your actions? Strange, very strange. To look at you, one wouldn't think so. Trowel, indeed? The dark of the moon. A pile of stones. What's underneath it, Higgins?"

"Nothin'," he said explosively. "No? Now, mustn't tell naughty fibs I'll have to wash your mouth out I'll tell you what we'll do—since you're so anxious to dig, we'll go inside, where it's easier, and dig properly."

"I don't want to dig." "Watch And Chain

"THAT'S just too bad. I'm so sorry, because I'm afraid you've got to. And before you start, you may sing a little song like a nightingale, or a weasel, or is it another owl? Just to set your friend's mind at rest. He's far, far away by now, of course, but he must be worrying."

Higgins writhed. Michael did not press the subject. "Stones first," Michael decided. "I'll help you, just to cheer you along. We'll take this one, and then this one, now don't s'irk."

"I'm not going to stand for this," Higgins growled. "Of course not. You couldn't reach the stones if you did. You'll bend over nicely and pick them up one by one. Ready?"

Higgins was not ready. Michael straightened up and spoke softly. "You get to work and move those rocks, you little fool, or I'll smash you flat," he said convincingly. Higgins got to work.

In a few minutes they had moved the rocks aside and the hard dened earth beneath lay bare. "Have you a light, Higgins?" Michael demanded. "No, I haven't."

"So you know exactly where to dig, do you? Well, dig then."

"I don't know what ver talkin' about."

"Do you want to be smashed flat?" Michael asked sweetly. Higgins was trembling. "Dig."

The man bent over and scratched feebly at the earth. Michael bent beside him and watched. Obviously they were getting nowhere. Michael snatched the trowel from Higgins' hand and moved over directly in front of the little break in the hedge. He could feel it with his hand. He thrust the trowel deep into the earth just there and scraped the soil away. He realized that the man beside him, was holding his breath, and that he must be on the right track.

In a few seconds, when the trowel had reached a spot perhaps six inches below the surface, he felt it

strike on something. Higgins heard it too, and drew in his breath on something that sounded very like a sob.

Michael lifted out a trowel of earth carefully. Higgins made a convulsive movement, and Michael grasped him by the shoulder and forced him down. "I haven't got it yet," he said consolingly.

But the next thrust struck it—something firm and hard, and Michael put his hand down into the hole, not, however, without a moment of dread; and encountered there a smooth flat surface. With a few more strokes of the trowel he laid it bare, seized it, and drew forth a little square box.

Daily Cross Word Puzzle

ACROSS: 1. Seed covering... 2. Singing voice... 3. Dismay... 4. Owned... 5. Pays attention... 6. Unit: Scotch... 7. Plural ending... 8. Device for refracting light rays... 9. Italian river... 10. Symbol for arsenic... 11. Former ruler... 12. Former ruler... 13. Kind of radio... 14. Tube... 15. Mountain in Massachusetts... 16. Sole... 17. Region... 18. Self... 19. Skill... 20. Hard outer covering... 21. Waste allowance... 22. Exclamation... 23. Pronoun... 24. Brazilian max... 25. Ourselves... 26. Age... 27. Fiber of old hemp rope... 28. Beverage... 29. Recesse... 30. Stagger... 31. Insect... 32. Memorandum... 33. Down... 34. Pain... 35. Clinging in a certain way... 36. Poetic name for an eastern city... 37. Piece of the year... 38. South abbr. year... 39. Youthful... 40. Seaweed... 41. Neighbor... 42. Recline... 43. Garden fruits... 44. One who inherits... 45. English musical composer... 46. Related... 47. Departed... 48. Believe... 49. Devoiced... 50. Ancient wine receptacle... 51. In excess... 52. British 100... 53. At home

Solution of Yesterday's Puzzle: PASS LATE OPS... ARAB OPEN CAT... TRY ROPE SHEAR... NOVAL CASE ACE... NEGUS ROTSES... ASKIEL NAVAL... LECTAILELETO... LARGE VEAL TO... ELIA BEAM PAM... GEMEARNERIE... ERE DAYS RYND

11x11 crossword puzzle grid with numbers 1-55 indicating starting points for clues.

REVIVE PLANS FOR NEW PARK

May Set Up Military Area in Johnston County

By AP Regional Service Washington, Nov. 3.—(AP)—Park service officials said today revival of plans to establish a national military park on the site of the Civil War battle of Bentonville in Johnston county, North Carolina, depended upon development of a movement to donate the land to the government.

They pointed out that the site was placed on the park service's approved list two years ago but that it was the agency's policy to await land donation—either through acquisition by private or local public sources—before undertaking to develop such areas as national shrines.

A. D. Demary, assistant park director, explained that the budget bureau frowned on approving appropriations, federal funds to acquire land for such purposes, it being customary for the land to be donated to the government.

Representative Harold D. Cooley of Nashville, in whose district the area is located, who led the movement to place the site on the approved list, expressed hope of its ultimate development. He pointed out that in some cases years are required to bring about federal development of historical sites, speed depending upon local agitation to acquire land.

The battle of Bentonville, a fierce encounter in the War Between the States, was one of the last fought in the conflict, preceding shortly the southern surrender at Appomattox, Va.

Berkeley, Calif.—(AP)—Years ago Dr. Valentine T. McGillicuddy was the first man to climb Harney peak in South Dakota's Black Hills. Now, deceased, his ashes will rest on the summit at his own request.

Interest in beef cattle continues on the upswing in a large number of Eastern North Carolina counties, reports L. I. Case, animal husbandman of the State College Extension Service.

Princeton graduate and has won national attention as editorial writer and columnist on numerous papers, including the ew York Journal, the Palm Beach Times and the Jacksonville Journal.

The State Literary and Historical society is accustomed to having distinguished speakers, however, some of those who have addressed its sessions including Theodore Roosevelt, James Bryce, William Howard Taft, Jules Jusserand and Henry Cabot Lodge.

Mayor Tom Cooper is beginning to regret one of his own cracks. Months ago he said something about "the first shall be last and the last shall be first," while discussing announcement of candidates for governor.

Now he is really champing at the bit in his anxiety to begin a formal campaign, and it's dollars to doughnuts he regrets ever having made his previous declaration; because if he should come out in the open now, it's certain that he'd be played with his own statements.

One of the most likely reasons no one has formally announced is that as soon as he does the "leg pulling" for money will begin in earnest.

Bible Class. 11:00 a. m.—Holy Communion and sermon. 6:30 p. m.—Y. P. S. L.

THE LUTHERAN CHURCH (Rotary Club Building) R. L. Landeck, Pastor. 11:00 a. m.—Morning worship. We offer a "Changeless Christ for a Changing World."

CHURCH OF ST. PETER THE APOSTLE Rev. Charles J. Cable, Pastor. The Holy Sacrifice of the Mass will be offered at 8:30. Evening services at 8 o'clock. Services on Monday and Tuesday at 7 a. m. and 8 p. m.

CHRISTIAN SCIENCE SERVICE 9:45 a. m.—Sunday School. 11:00 a. m.—Lesson-Sermon. Wednesday—Reading room is open from 2 until 5 o'clock in the church building.

WEDNESDAY, 7:30 p. m.—Prayer meeting in the church edifice, 1006 Dickinson avenue. The public is cordially invited to attend these services.

PENTECOSTAL HOLINESS Corner 13th & Reade Sts. Rev. J. G. Spivey, Pastor. 10:00 a. m.—Sunday School; J. W. Burch, Supt.

11 a. m. and 7:30 p. m.—Services by pastor on first and third Sundays. Tuesday, 7:30 p. m.—Prayer services. Thursday, 7:30 p. m.—P. Y. P. S. services.

PRIMITIVE BAPTIST CHURCH Corner Cotanche & Tenth Sts. Rev. S. B. Denny, Pastor. Services every fourth Saturday and Sunday.

SALVATION ARMY MEETING 10:00 a. m.—Sunday School. 11:00 a. m.—Holiness Meeting. 6:00 p. m.—Young People's Meeting. 8:00 p. m.—Salvation Meeting.

Tuesday, 7:30 p. m.—Prayer Meeting. Thursday, 7:30 p. m.—Women's Sewing Club. Friday, 7:30 p. m.—Holiness Meeting.

Colored Churches SYCAMORE HILL BAPTIST Corner Greene & First Sts. Rev. J. A. Nimmo, Pastor. 9:30 a. m.—Sunday School; W. D. Miller, Supt.

We invite all of our friends to join us in the campaign for workers. 11:00 a. m.—Morning worship. 6:00 p. m.—B. T. U.—R. P. Payton, director. 7:30 p. m.—Evening worship. Sermon by the pastor.

ENGLISH CHAPEL F. W. B. CHURCH 9:30 a. m.—Sunday School—Sam King, Supt.; Mrs. Annie Fleming, Secy. 11:00 a. m.—Sermon by the pastor, Rev. S. Hemby.

ST. JOHN'S C. M. E. MISSION Sheppard Street Sunday School, 10:45 a. m. Preaching every first Sunday at 11:45 a. m., and 7:45 p. m. Preaching every third Sunday at 3:30 p. m., and 7:30 p. m. The public is invited to attend these services.

Rev. W. F. Jones, Worship Evangelist, Pastor; Residence, Bethel, N. C. A cordial invitation is extended to all colored people to worship with us.

ST. ANDREW'S MISSION (Episcopal—Bonner's Lane) Rev. Worth Wicker, Priest in Charge. Evening prayer and sermon, 4:00 p. m. A cordial invitation is extended to all colored people to worship with us.

ST. GABRIEL'S CATHOLIC Fifth St. and Tyson Ave. Pastor, Rev. Father Maurice C. P. Holy Mass every Sunday at 10:30 a. m. Instructions for children following the mass. Every Sunday at 5:00 p. m.—Sermon and evening prayer. Holy Mass each morning at 7:00 Services Friday night at 7:45.

MT. CALVARY F. W. B. CHURCH Rev. E. M. Hill, Pastor. 9:45 a. m.—Sunday School; Jas. Killbrew, Supt. Preaching every fourth Sunday at 11 a. m. Evening worship every fourth Sunday at 7:30 p. m.

PHILIPPI CHRISTIAN CHURCH (Disciples of Christ) Corner 13th and Greene Sts. Rev. C. T. Utley, Pastor. Regular services every second and fourth Sundays. 9:30 a. m.—Sunday School; John L. Leary, Supt. 11:30 a. m.—Preaching. Prayer meeting each Wednesday night at 7:30. All are cordially invited to attend these services.

YORK MEMORIAL A. M. E. ZION Albemarle Avenue Rev. Solomon P. League, Pastor. Sunday School, 10:00 a. m. Preaching, 11:00 a. m. Christian Endeavor, 6:30 p. m. Preaching, 7:30 p. m. Prayer and class meeting each Wednesday evening at 7:30. All are welcome to these services.

SILVIA CHAPEL F. W. B. CHURCH Rev. J. W. Wilkins, Pastor. Services every first Sunday at 11:00 a. m. Sermon by the pastor. 2:00 p. m.—Sunday School; Sam Weathers, Supt. All are invited to these services.

CORNERSTONE BAPTIST (Thirteenth & Railroad Streets) Rev. J. E. Tibbitt, Pastor. Sunday School, 9:30 a. m.; Geo. L. Jenkins, Supt. Church hour, 11 a. m. Sermon by the pastor. Evening service, 7:30 p. m. Sermon by the pastor.

SIMPSON F. W. B. CHURCH Rev. John Harden, Pastor. Services every fourth Sunday. Sunday School, 10 a. m.; C. L. Hardy, Supt. 11:30 a. m.—Morning, worship. 7:30 p. m.—Evening worship.

WEDNESDAY, 7:30 p. m.—Prayer meeting. ELIJAH HOLINESS CHURCH Pitt Street Elder J. N. Batten, Pastor. Services at 11:30 a. m. and 7:30 p. m., Sunday. All welcome. Thursday, 7:30 p. m.—Prayer meeting.

PHILIPPI BAPTIST CHURCH Railroad Street—Simpson, N. C. Rev. J. H. Harris, Pastor. Sunday School, 9:30 a. m.; J. H. Taft, Supt. 11:30 a. m.—Morning worship. 7:30 p. m.—Evening worship. Home Missions meet. Thursday, 7:30 p. m.—Mid-week Wednesday, 2 p. m.—Women's prayer service.

NOTICE OF SALE Under and by virtue of the powers and authority contained in that chattel mortgage executed by Bryant Baker to Harry Baker of record in Book A-22, page 432 Pitt County Registry, default having been made in the payment thereof, the undersigned will offer for sale, and sell to the highest bidder, for cash, before the courthouse door in Greenville, Monday, December 4, 1939 the following described real estate, to-wit:

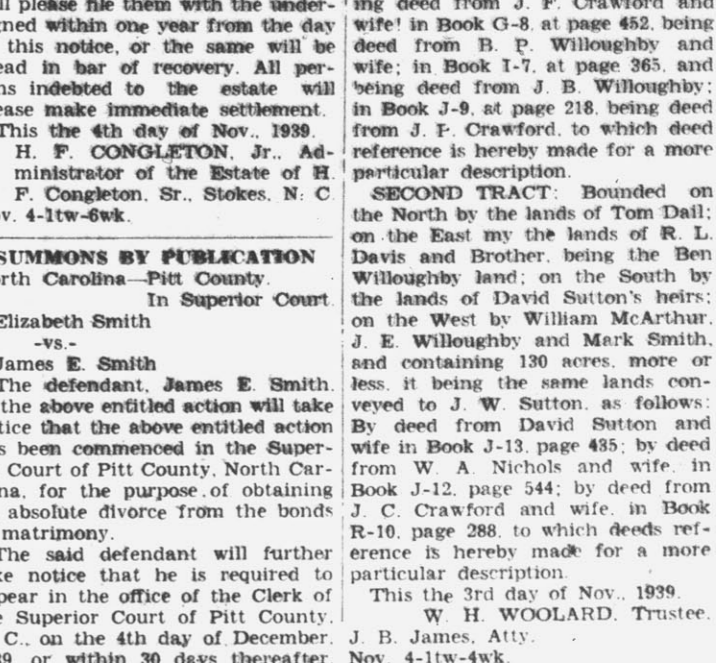
FIRST TRACT: Bounded on the North by the lands of Tom Dail, formerly the Tom Nichols land; on the East by the lands of William McArthur and Bessie Willoughby; on the South by the lands of Levi Willoughby; and on the West by the lands of C. R. Willoughby and Tom Nichols, containing 220-1/2 acres, more or less, and being the same land which was conveyed to J. W. Sutton by the following deeds, to-wit: In Book R-10, at page 227, being deed from J. F. Crawford and wife! in Book G-8, at page 452, being deed from B. P. Willoughby and wife; in Book I-7, at page 365, and being deed from J. B. Willoughby; in Book J-9, at page 218, being deed from J. F. Crawford, to which deed reference is hereby made for a more particular description.

SECOND TRACT: Bounded on the North by the lands of Tom Dail; on the East by the lands of R. L. Davis and Brother, being the Ben Willoughby land; on the South by the lands of C. R. Willoughby; on the West by William McArthur, J. E. Willoughby and Mark Smith, and containing 130 acres, more or less, it being the same lands conveyed to J. W. Sutton, as follows: By deed from David Sutton and wife in Book J-13, page 435; by deed from W. A. Nichols and wife, in Book J-12, page 544; by deed from J. C. Crawford and wife, in Book R-10, page 288, to which deeds reference is hereby made for a more particular description.

This the 3rd day of Nov., 1939. W. H. WOOLARD, Trustee. J. B. James, Atty. Nov. 4-1tw-4wk.

SUMMONS BY PUBLICATION North Carolina—Pitt County. In Superior Court. Elizabeth Smith vs. James E. Smith. The defendant, James E. Smith, in the above entitled action will take notice that the above entitled action has been commenced in the Superior Court of Pitt County, North Carolina, for the purpose of obtaining an absolute divorce from the bonds of matrimony. The said defendant will further take notice that he is required to appear in the office of the Clerk of the Superior Court of Pitt County, N. C., on the 4th day of December, 1939, or within 30 days thereafter.

WE'VE ALL GOT C.A.\* SINCE DAD BOUGHT THAT RUUD GAS WATER HEATER WITH A MONEL TANK



"I used to be that every time I read the magazine ads I wanted to chain Henry down, to keep him from walking out of my life forever—a girl can't be too sure these days that she hasn't overlooked something that's terribly important in holding her boy-friend or keeping the neighbors from talking. Anyway, Dad fixed the whole thing (although Goodness knows he hasn't any more use for glamour than a rhinoceros) when he bought a Ruud automatic gas water heater with a Monel tank.

"The day they installed the new Ruud. Dad came home and announced that now we'd have all the hot water we could use, day and night. And he said that the Ruud gas water heater was automatic—no step-climbing, no stoking, no tinkering. Then he went on to say that we'd have clean hot water, because the Monel tank couldn't rust, and was guaranteed for twenty years.

"Now we all have C.A.\*—from Baby to Grandpa. And if you ask me, you're wasting your lotions if you don't begin your charm program with C.A.\* You're certainly missing one swell treat if you don't have all the clean automatic hot water you can use, when it costs so little."

\* Cleanliness Appeal

A small down payment and the balance in small monthly payments for perfect hot water service.

Water & Light Com.

SHORT SHOTS

Raleigh, Nov. 4.—For the first time in more than thirty years as a peace officer, John S. Braswell now carries official identification papers.

As policeman at Concord and Hamlet, chief of the department at Hamlet, sheriff of Richmond county and triant officer for state prison, Braswell has made arrests and served nearly every known kind of civil and criminal court papers without his authority being questioned until last week.

He went to Syracuse to bring back an escaped convict from state prison. He found his man, cleared with the police and with the sheriff's department and then took all his papers to a judge for final clearance.

"What do you have to show that you represent the state of North Carolina?" sternly asked his honor. Braswell was stumped. He had everything except what he really needed. But he talked himself out of the jam, got his man and brought him safely back to North Carolina.

Next day he went to see the governor and got a very impressive looking document, all signed up by Clyde Hoey and Bob Thompson and bearing the impress of the great seal of the state.

It certifies that he is the fugitives officer of the state highway and public works commission which administers the state prison system; and that he has a right to claim fugitive convicts in the name of the state of North Carolina.

The State Literary and Historical association will have for principal speaker at its annual meeting Friday evening, December 8, one of the south's leading newspaper men—John Temple Graves, II, of the editorial staff of the Birmingham Age-Herald.

Mr. Graves will speak at the closing session of the society's meeting. A native of Georgia, Graves is a

Try Our Want Ads

# Green Phantom Swamp New Bern Bears By 34-0 Score

## JNO. SPEARMAN SHOWS UP FINE

### Substitute Backfield Man Makes Name For Himself

The Green Phantoms of Greenville High School last night completely outplayed their New Bern rivals on their home ground, and racked up another win, scoring a 34-0 triumph.

Coach Bo Farley's men exhibited a fine brand of team coordination and, led by the stellar George Sakas, who scored three touchdowns before being relieved, completely baffled their foes.

The locals started scoring early in the game. On the second play of the battle George Sakas raced 50 yards for a touchdown.

The phantoms scored twice in the second quarter. Sakas carried the ball over on a line plunge from the three-yard stripe. The try for extra point was good and the locals led 13-0, but that score did not stand for long. Stocks this time carried the ball over and at half time the Phantoms led 20-0.

Tyndall set the stage for the fourth score on a 24-yard reverse. Sakas crashed over the line, to score his third touchdown of the game.

John Spearman, who went into the game for Tyndall, really went to town, netting the final touchdown for the Phantoms.

The locals made good on four of the five tries for extra points. Two were made on passes and two on place kicks.

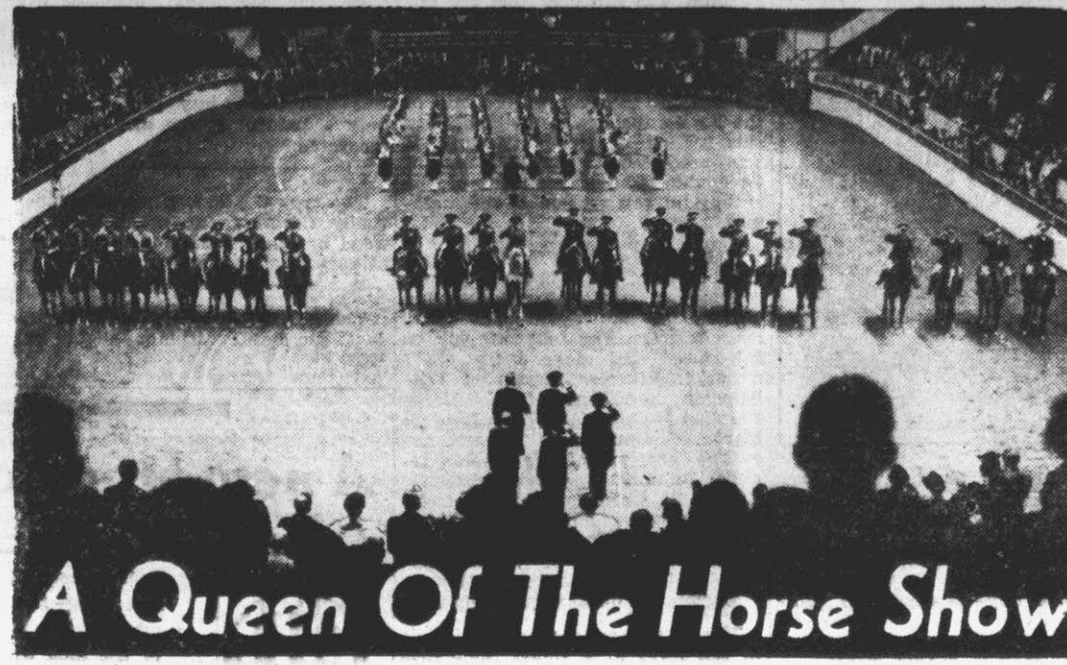
The starting line-up for the Phantoms was: James and Collins, ends; Kittrell and Rogerson, tackles; Scott and Parris, guards; Williams, center; Tyndall, J. B. Kittrell, Sakas and Stocks, backfield.

Substitutes seeing action, besides Spearman, were Page and Hunter, ends; Cox and Carroll, tackles; Edwards and Johnson, guards; Goodall, center; Taylor, Harrington, Clark, Crawford and Christopher, tackles.

## 'Sweet' Lalanne



Jim (Sweet) Lalanne, University of North Carolina quarterback, is a triple-threat football player recognized as first lieutenant to Co-Capt. George Stiness, another luminary of the team. Lalanne hails from LaFayette, La. He is shown above.



## A Queen Of The Horse Show

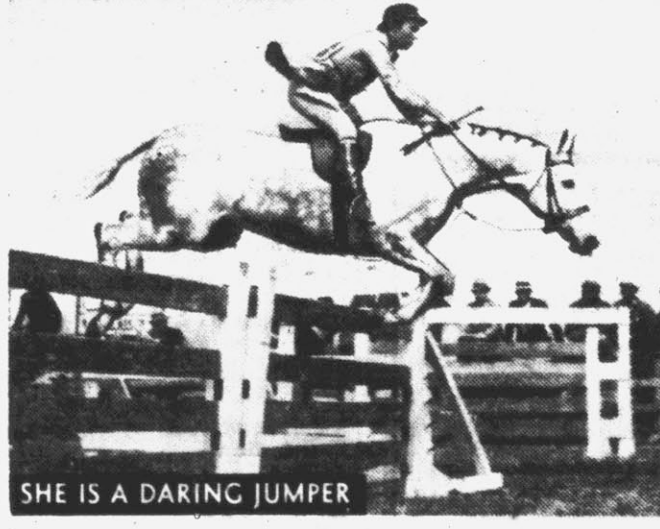


DANCES WITH HUSBAND

AP Feature Service  
Top ranking indoor horse show is the National at New York's Madison Square Garden November 4-11 with 2,000 entries. Competitions range from those for handsome five-gaited animals to the hunters who leap high timber and brush barriers. The big thrills generally come in the military jumping between cavalry officers from Chile, Mexico and the United States. One of the country's most consistent horse show winners is wealthy Mrs. John Hay Whitney, a beautiful and talented rider whose training and breeding farm is in Virginia.



SUPERVISES TRAINING



SHE IS A DARING JUMPER

## SAFETY DRIVE NETS RESULTS

### Textile Contest Holds Accidents To Minimum

Raleigh, Nov. 3.—Employees of 228 textile plants to the number of 86,920 worked more than a hundred million hours during the progress of North Carolina's fourth statewide Textile Safety Contest and had less than eleven accidents for each million hours of their labor. T. A. Wilson, chairman, pointed out in reporting for the North Carolina Industrial Commission on the results of the contest.

He made the report to the North Carolina Cotton Manufacturers' conference at Pinehurst today. Proof that participation in the contest improved the safety conditions in participating plants is found, Chairman Wilson pointed out. In the fact that while there were 90 industrial deaths and five permanent disability injuries during the past fiscal year seven of them in the textile industry not a single compensable death or permanent total disability case was sustained and reported by a textile plant competing in the contest.

"The safety and accident prevention work being carried on in the textile industry of North Carolina is gaining national recognition more and more each year," the report said.

"The plants taking part in these safety contests and the association are to be congratulated in creating these safety contests in the textile plants, this being the original of such contests in the nation," it added.

Out of the 228 competing plants which completed the contest, 43 employing 7,644 employees operated for 9,418,041 man-hours without a single lost-time accident.

## NEGRO ELEVEN RACKS UP WIN

### Local Colored Highs Beat Smithfield 25-0

The Greenville colored high school football team engaged the Smithfield eleven in Guy Smith park last night and came out with a 25-0 victory.

The Greenville boys outplayed the Johnston county entry throughout the contest, but Smithfield put up a better fight than the score would indicate. Greenville made 10 first downs, to Smithfield's six.

Greenville scored in the first quarter when Hill ran seven yards to cross the pay-off stripe after consistent gains on running plays. Neither team was able to score in the second quarter, which ended with the locals leading 6-0.

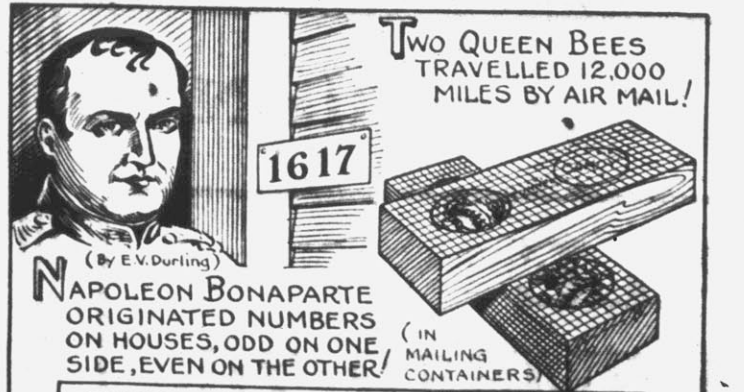
Smithfield came closest to scoring in the third quarter when they dug deep into Greenville territory. Clark, however, intercepted a pass and cut the drive short of a touchdown. The locals then proceeded to make another touchdown and converted to make the score 13-0.

Greenville scored two touchdowns in the final quarter, but failed to convert on either and the game ended, 25-0.

Without optical aid only 1,500 stars are visible at one time to the human eye. Moonlight or a slight haze will obscure half of them.

The famous redwood trees of California are seldom found farther inland than 30 miles from the coast. They are estimated to be 3,000 to 4,000 years old.

## POSTAL ODDITIES



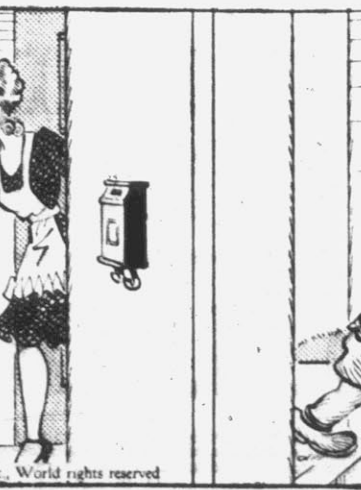
TWO QUEEN BEES TRAVELLED 12,000 MILES BY AIR MAIL!  
1617  
NAPOLION BONAPARTE ORIGINATED NUMBERS ON HOUSES, ODD ON THE ONE SIDE, EVEN ON THE OTHER (IN MAILING CONTAINERS)  
THE CARTOONING BAE  
D.C.  
THIS LETTER WAS RECEIVED BY JOHN BAER, THE CARTOONIST WHO DRAWS THIS FEATURE!  
Reg. U. S. Pat. Office 334-566, May 5, 1936, by National Federation of Post Office Clerks 79

Oddly enough, thousands of bees travel through the mails every day without ever bothering the postal employees, because they, like the ones illustrated above, travel in special containers lined with nectar. The two Queens above traveled from Amsterdam, Netherlands, to Sydney, Australia, every mile by air. The postage was \$12.50. Odd, isn't it?

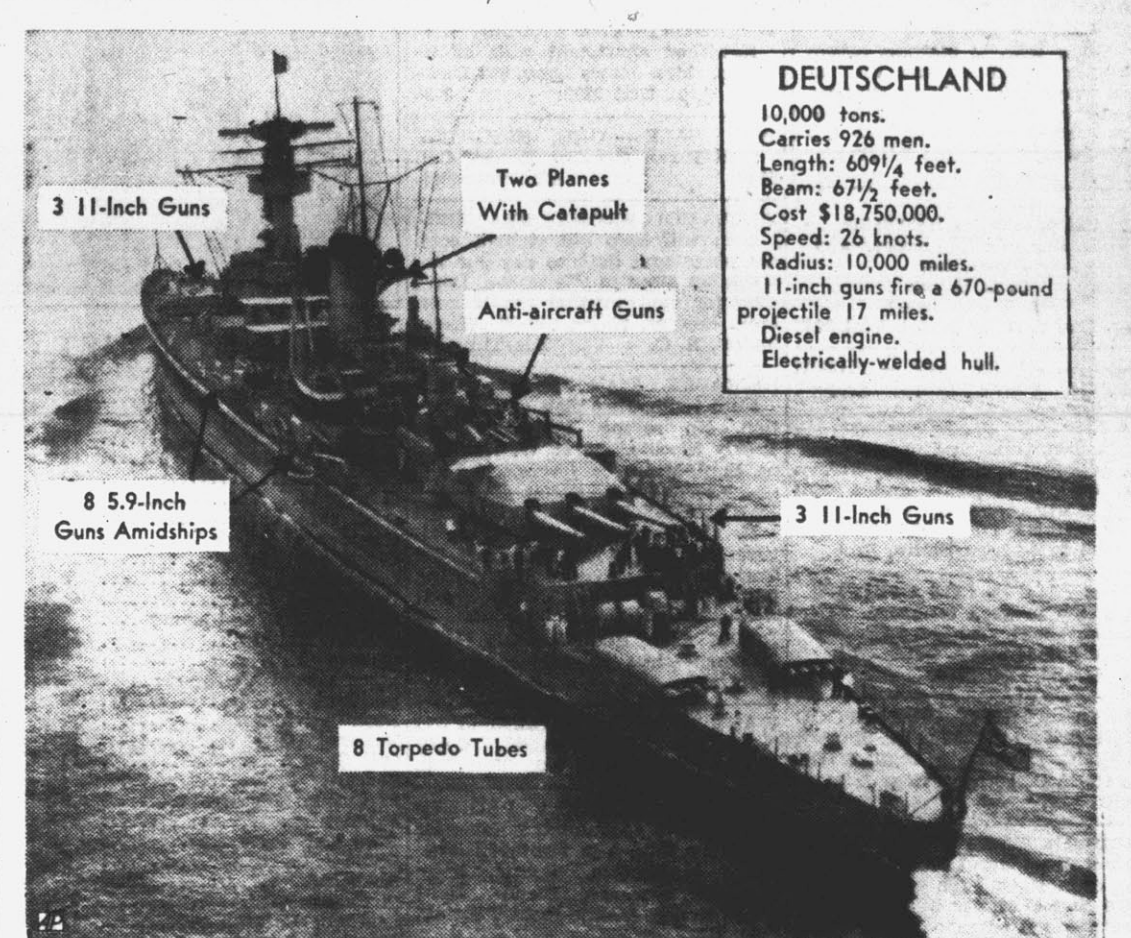
## THIMBLE THEATRE (Starring Popeye)



## BLONDIE



## This is Bad News for Britain



DEUTSCHLAND  
10,000 tons.  
Carries 926 men.  
Length: 609 1/4 feet.  
Beam: 67 1/2 feet.  
Cost \$18,750,000.  
Speed: 26 knots.  
Radius: 10,000 miles.  
11-inch guns fire a 670-pound projectile 17 miles.  
Diesel engine.  
Electrically-welded hull.

(By The AP Feature Service) most of the British ships fast 30 knots and carry 15-inch guns. Loose somewhere among the world's sea lanes are two German raiders capable of doing millions of dollars' worth of damage to Allied shipping. They are the pocket battleships Deutschland and Admiral Scheer. Their menace lies in the fact that they are fast enough to catch them do not have guns big enough to sink them, and most of the ships with big enough guns aren't fast enough. Which is a knotty problem. However, Britain's three battle cruisers—Hood, Renown and Repulse—have a speed of more than submarines.

## Weather Report—Cold Weather Ahead

Have your car checked over for winter driving. Take advantage of this Special Price and be sure of your car during the bad weather to come.

Clean and adjust spark plugs, clean and adjust ignition points, set ignition timing, adjust valves, adjust carburetor, clean fuel pump bowl and strainer, inspect and adjust fan belt, inspect all water connections and hose, set generator or charging rate, check battery and cables, connect heater, install anti-freeze, change grease to winter weight, change transmission grease to winter grade, change differential grease to winter grade, change motor oil to winter grade.

ALL FOR —  
**\$1.95**  
Plus Materials

# Folger Buick Co., Inc.

Tenth and Washington Streets

# WANTS

Rates 1/4c per word, minimum charge 35c for 25 words, one insertion; six insertions \$1.85; one month, \$7.00. Indented lines, known as classified display, or larger than regular size type, double price.

Other than to business houses having regular accounts with us, no want ads will be charged. Send or bring cash with order. To prevent errors, want ads will not be taken over the telephone.

**PLUMBING - HEATING**  
Your Dependable Plumber and Steamfitter  
**C. L. RUSS**  
312 Evans Street  
Day, Dial 3231 - Night, Dial 3062

**SPECIAL EVERY DAY - FRESH**  
cooked Potato Chips. People's Bakery.

We Clean and Press  
Men's Suits, Ladies' Coats—Dresses  
Our work must please and a trial will convince you  
**CAROLINA DRY CLEANERS**  
Dial 2776—Leon Smith, Prop.

**FOR SALE - ONE UPRIGHT**  
Piano in good condition. Excellent tone. An exceptionally good buy at \$50.00. Quinn-Miller & Stroud, Dial 2636.

**SPECIAL TURKEY OR SEAPOOD**  
Dinner, 5:30 to 8:30 p. m., Sunday, Nov. 5th. Davenport's Grill, Washington, N. C., corner Bridge & Main Sts.

**JUST RECEIVED - NEW SHIPMENT**  
of Imported China—53-piece set, open stock, for \$15.50—\$1.00 down and \$1.00 per week. Several beautiful patterns to select from. Lautares Bros., Jewelers.

**SEE US FOR YOUR HUNTING,**  
fishing and trapping licenses. Also shotguns, rifles and ammunition. J. A. Watson, Seed-Feed-Provisions.

**OCTOBER IS A VERY GOOD**  
month for planting your permanent or winter lawn. Call us for prices on all kinds of grass seed. J. A. Watson, Seed-Feed-Provisions.

**CALL US FOR YOUR NEEDS IN**  
small tin heaters, stove pipe and elbows. All sizes. J. A. Watson, Seed-Feed-Provisions.

**COME IN AND SEE OUR NEW**  
bulbs for fall planting. The largest variety we have ever had. J. A. Watson, Seed-Feed-Provisions.

**BEFORE YOU BUY, GET OUR**  
prices on seed rye, seed oats, seed wheat, seed barley, Austrian winter peas and vetch. J. A. Watson, Seed-Feed-Provisions.

**FOR SALE - ONE UPRIGHT**  
Piano in good condition. Excellent tone. An exceptionally good buy at \$50.00. Quinn-Miller & Stroud, Dial 2636.

**FOR SALE**  
New 6-room bungalow, 1118 Colonial Avenue, near Third St. School. Large lot. Modern conveniences. Priced for quick sale. Owner leaving town.  
D. L. TURNAGE, Phone 2715.

**See Typewriters**  
**WOODSTOCK**  
J. A. Moore Office Equipment Company, 250 Tazewell Street, Norfolk, Virginia; W. R. Kerr, Agent, Rocky Mount, N. C.

**Radio Repairs**  
—BY—  
**FACTORY TRAINED EXPERTS**  
DIAL 3114  
**McCormick Music Co.**  
121-122 W. Fourth Street  
DIAL 3114

**MOVIE OPERATORS AND MANAGERS**—Greenville district—movie circuit work—Roshon, P. O. Box No. 1001, Memphis, Tennessee. 2-3t

**TIME FOR BEAN HARVESTERS!**  
See the Biloxi and Cox models. Also all repair parts. Blount-Harvey Oct. 31-eod-2wk

**FOR RENT—BRICK STORE ON**  
Dickinson Ave. See J. W. Higgs. Nov. 3-tf

**FOR RENT—TWO ROOM UN-**  
furnished apartment with kitchenette. Mrs. James Long, 802 Dickinson Ave., Dial 2292. 3-3t

**FOR SALE - ONE SLIGHTLY**  
used Home Comfort Range. Call 2179. Mon-Wed-Sat.

**ALDEN COIL BRONZE WEATHER-**  
strip will keep out enough cold, dampness and dust to pay for installation often in one season. Don't wait for cold weather—do it now. McV. Sawyer, phone 843-W, Washington, N. C. Tue-Thu-Sat.

**RELIABLE MAN TAKE CARE**  
store route. New plan of distribution. No selling. Earn excellent weekly income. B. & W. Nut Co., St. Paul, Minn.

**BABY CHICKS U. S. APPROVED**  
N. C. bloodstock chicks at all times. Rocky Mount Hatchery, 209 Tarboro St., opposite Post Office, phone 662. 4-3t

**ROOM AND BOARD FOR GEN-**  
tlemen—close in—reasonable. 206 Eighth St.

**WANT TO BUY FOR CASH—TWO**  
to four Negro houses. Reply "Houses," P. O. Box 408. Sat-Tue.

**FOR RENT - NEWLY PAINTED**  
downstairs apartment, suitable for not more than 3 in family—2 large rooms, kitchenette, dinette, bath, separate entrance, porch. Rent \$22.50 month. Mamie Ruth Tunstall, Dial 2481.

**SPECIAL FOR SUNDAY—LARGE**  
Cocunut Pies, Butter Biscuits, Ice Box Cookies, Angel Food Cakes. People's Bakery.

**FUR COAT REMODELED. LAT-**  
est styles—repaired and re-dyed to look like new. Stewart Jackson, Furrier-Tailor, Elks Clothing Store.

**FOR SALE - SMALL TOBACCO**  
farm at reasonable price. H. T. Cox, Vanceboro, N. C. R. 1. 4-3t

**New York Cotton**  
New York, Nov. 4.—(AP)—Cotton futures opened three to seven higher.

**Chicago GrainMarket**  
(Courtesy Vernon Parrish)

WHEAT—	Open	Close	Pr. Cl.
Dec.	88 1/2	87 1/2	87 1/2
May	87 1/2	86 1/2	86 1/2
July	86	85 1/2	85 1/2

**CORN—**

Dec.	51 1/2	50 1/2	50 1/2
May	53 1/2	53 1/2	53 1/2
July	54 1/2	53 1/2	54 1/2

**OATS—**

Dec.	37 1/2	36 1/2	36 1/2
May	36	35 1/2	35 1/2
July	33 1/2	32 1/2	33

**RYE—**

Dec.	55 1/2	54 1/2	54 1/2
May	56 1/2	55 1/2	55 1/2

**N. Y. Stock Market**  
New York, Nov. 4.—(AP)—Aviation stocks led their backers a fast chase through the market gamut of changes today, smashing peak records and then selling off in a burst of profit taking.

Large blocks of securities changing hands rapidly, pushed the short session's total transactions to about 1,300,000 shares, the largest Saturday trade since September 9. Near the final bell despite all the action, the list was almost evenly balanced with gains and declines. Some observers were of the opinion that Wall Street in general was satisfied with the special session of Congress.



Randolph Scott, Margaret Lindsay romancers on "20,000 Men a Year" PITT Mon. and Tues.

## N. Y. STOCK LIST

A. C. L.	25
Anaconda	34 1/2
American Radiator	10 1/2
Bethlehem Steel	88 1/2
Chrysler	88
C. I. T.	52 1/2
Coca Cola	122 1/2
Commercial Credit	47 1/2
Consolidated Oil	13 1/2
Continental Can	44 1/2
Electric Bond and Share	9 1/2
General Motors	54 1/2
Gillette	6 1/2
International Telephone	4 1/2
Lorillard	23
Nash Kelvator	7 1/2
National Dairy	16 1/2
Otis Steel	14 1/2
Packard	4 1/2
Paramount Pictures	8 1/2
Pullman	37 1/2
Pure Oil	8 1/2
Radio	6 1/2
Reynolds	37 1/2
Simmons	24 1/2
Southern Railway	19 1/2
Standard Brands	5 1/2
Sperry Corporation	49 1/2
Texas Corporation	47 1/2
Teas Gulf Sulphur	35 1/2
United Aircraft	49 1/2
United Corporation	2 1/2
United Drug	5 1/2
U. S. Steel	75
Warner Pictures	4 1/2
Western Union	28 1/2
Douglas Aircraft	85 1/2
N. Y. Central	21 1/2
Phillips Petroleum	43 1/2
American Tobacco	81 1/2
U. S. Alcohol	24 1/2
Aviation Corporation	9 1/2
Curtis Wright	12 1/2
American Telephone	169

## BABSON

(Continued from Page One)

ers were completely in the saddle. Yet, all signs point to higher prices. Only a few days ago, the Fair Labor Standards Act set up a new wage and hour schedule for industrial and office workers. The minimum wage went up from 25 cents to 30 cents an hour, and the maximum work week was damped from 44 to 42 hours. This is sure to increase prices and thereby result in more people out of jobs.

Any business man who fails to watch prices and costs carefully will be licked if the war is a long one. Employers and farmers will have no alternative but to hike their prices. Business men do not stand a chance of bucking trade associations and labor unions. Organized groups are in a position to take advantage of war conditions. They may skim the cream off profits, leaving the

**TODAY—SUNDAY**  
It's a knockout!

A riot of romance and high-hat hilarity

with **WALTER CONNOLLY** James ELLISON

Extra Added Attraction  
'Uncle Sam-the Farmer' a timely story of farm problems presented by **MARCH OF TIME**

**Ginger ROGERS**  
**FIFTH AVENUE GIRL**

**PITT**

## B & L Units Plan For Kinston Meet

More than 125 building and loan directors and officials from the entire eastern part of North Carolina will assemble at a dinner meeting, starting at 6:30 p. m., at Hotel Kinston, Kinston, on Tuesday, November 7. This meeting will be one of the largest district meetings held in this section of North Carolina, it was predicted by W. W. Lee of Greenville, who is president of the group and will preside at the meetings.

D. L. Ward of New Bern, who was the speaker of the 1939 house of representatives of the North Carolina General Assembly, will deliver the main address. The following will be introduced and make a few short remarks: Wheeler Martin of Williamston, president of the North Carolina Building and Loan League; Martin P. Gaudin of Raleigh, executive secretary of the North Carolina Building and Loan League; George W. Crone of Raleigh, deputy insurance commissioner; O. K. LaRoque, president of the Federal Home Loan Bank of Winston-Salem; and Zeno Martin of Marion, chairman of district presidents.

The afternoon meeting which is in the form of a round table discussion, starting at four o'clock, will be devoted to subjects such as construction loan procedure, full paid shares, dividend rates and business development methods, including newspaper advertising. Entertainment for the dinner meeting will be furnished by the Mutual Building and Loan Association and the Home Building and Loan Association of Kinston. It has been arranged by M. Oettinger and Miss Hennie Moore of Kinston.

## Shortage of Skilled Labor

Another price factor under wartime conditions is the supply of skilled labor. A shortage already exists in certain industries which are operating at all-time peaks, such as aviation manufacturing, machine tool, and machinery. By shortage, I mean that the competent skilled workers have been all snapped up. These companies are now digging down into the bottom of the labor barrel and are being forced to take on inadequately trained workers.

This would be a very serious situation if the United States were involved in a war. These three industries are the backbone of our army and our navy.

One of the reasons why a shortage of skilled men is developing is because of union rules. Unions in the past few years have refused to take off apprentices in their trades. They have done this to keep down the available supply of trained men and thus artificially to peg their pay. In fact, the government is becoming so worried over this condition that it is asking big industries voluntarily to take on capable young men for training. The restrictions on apprentices should be removed.

Government Wants Labor "Trust"

Just as some years ago the government said to the utilities, "If you refuse to cut rates we will go into competition with you," the government is now saying to the unions, "If you intend to monopolize labor in your trade we will foster competition." This is a very hopeful sign. War or peace, we cannot have any lasting prosperity in America if costs—both for labor and materials—keep going up. We improve our standard of living by lowering—not increasing—costs!

What does all this mean to consumers? It means that a long war would boost your cost of living substantially. You would have to pay higher prices for nearly everything you buy. Keep this in the back of your mind. However, now is not the time to get panic-stricken and lay in big supplies of flour, sugar, and the like. Our warehouses are bulging with them. There will be plenty of opportunity to do this when we know more about the war. For the time being, go about your business and home purchasing in a normal way—just as you would if there were no war!

## FDK SIGNATURE ENDS EMBARGO AGAINST ARMS

(Continued from page one)  
(D-Neu.) of the Senate Foreign Relations committee, and the other to Chairman Bloom (D-N. Y.), of the House Foreign Affairs committee, who steered the legislation to passage at a special session which ended early last night.

More people are killed in the course of farm work than in any other industry.

**Special Performance**  
TUES. 10:30 A. M.

"Saucy, frothy and entertaining" — *HEARST TRIP*

**MAURICE CHEVALIER**  
"WITH A SMILE"  
English Title

Gay! Satirical! Sparkling!

Adm. 25c

**PITT THEATRE**

Starts NEXT SAT. "THE WOMEN" (And its all about the men)

LANA TURNER WED. THUR. "Dancing Co-ed" with ARTIE SHAW and His Band

## RETURN SHIP TO U. S. CREW

(Continued from page one)  
condition was not serious enough to justify calling at a neutral port.

According to information obtained from American crew members at Bergen the man was Allison Sellers of Wilmington, N. C., who suffered a leg injury when he stumbled over some machinery in the darkness. It was said the injury proved to be only a painful bruise and he had recovered.

The typical Mexican home is virtually fireproof for practically no wood or other inflammable material goes into its construction.

The Wright brothers made their first successful airplane flight in 1903.

## Licenses Revoked By Beer Industry

Raleigh, Nov. 2.—The beer industry's "clean up or close up" campaign in North Carolina resulted in the revocation of nine retail beer licenses during the month of October and revocation proceedings against seven other beer outlets, it was announced today.

Col. Edgar H. Bain, state director of brewers and North Carolina beer distributors committee, announced that the committee was successful in securing the revocation of licenses of dealers in Buncombe, Gaston, and New Hanover counties last month.

The committee also filed petitions with the boards of commissioners of Iredell, Haywood and Brunswick

counties seeking revocations of licenses of four dealers who, the committee alleges, operate objectionable beer outlets.

The Buncombe county board of commissioners revoked six beer licenses last month and has a public hearing scheduled November 6 on the committee's petition for revocation of another license.

The New Hanover county board of commissioners, at its meeting November 13, will hold public hearings on the committee's request to revoke the licenses of two dealers in that area. The board had previously revoked the license of another dealer.

Two weeks after the war of 1812 ended the Battle of New Orleans was fought. Communications were so bad that word did not reach either army in time.

## A new brood of U. S. eagles!

College Lads Today — Flying Men Tomorrow

Today America's eyes are on these young college men—this is their thrilling story of adventure and romance told thru the eyes of the men who give them wings!

**20,000 MEN A YEAR**

Starring **RANDOLPH SCOTT**  
**PRESTON FOSTER**  
**MARGARET LINDSAY**  
Mary Healy Robert Shaw

Little Features—  
"SONS OF LIBERTY"  
A dramatic story of America's Revolutionary War in Technicolor!  
"THE WOMEN"  
(And its all about the men)LATE NEWS EVENTS

LANA TURNER WED. THUR. "Dancing Co-ed" with ARTIE SHAW and His Band

FRIDAY "Everything's ON ICE" with Irene Dare Lynn Roberts

## A Solid Week of Fun, Adventure, Thrills

**TUESDAY-WEDNESDAY**  
Yes, It's Back Again!  
The Greatest of All Outdoor Pictures

**JESSE JAMES**  
In Technicolor  
Starring **TYRONE POWER HENRY FONDA NANCY KELLY RANDOLPH SCOTT**

—Also—  
Starting New Serial 12 Spine-Shivering Chapters  
Featuring **BELA LUGOSI "The Phantom Creeps"**  
—Last Chapter—  
"Daredevils of Red Circle"

**SUNDAY ONLY**  
No horse can match his speed — no man can match his courage!

**"PRIDE OF THE BLUEGRASS"**  
with the Racing Sensation of the Age **GANTRY THE BLIND HORSE**  
SEE Gantry, the world-famous jumper, beat horses, jump hazards he can't even see!  
with Edith Fellows • James McCallion

ON THE STAGE **SEABEE HAYWORTH** AND HIS PLAYERS

—MONDAY—  
**LEE TRACY** in "Spellbinder" with LINDA HAYES

—THURSDAY—  
ON OUR STAGE 3:30-7:00-9:15  
**SPARKLING REVUE SPICES OF 1940**  
18—PEOPLE—18  
Featuring **CHARLENE** in her **DARING GARDENIA DANCE**  
Also Screen Program

—FRIDAY-SATURDAY—  
No Fooling Folks—This is Cassidy's Greatest  
**"THE LAW OF THE RAMPAS"**  
Featuring **WILLIAM BOYD**

# FOUNTAIN'S WAREHOUSE, Farmville, N. C.

Can Give You a Sale Every Day After Monday on Either a 1st or 2nd Sale.

Prices on all Grades Have Been At The Best This Week

Sell Your Next Load With: **C. H. WEBB-J. N. FOUNTAIN-GEO. BENNETT**

**1st SALE**  
**TUESDAY NOVEMBER 7th**  
**FRIDAY NOVEMBER 10th**  
**MONDAY NOVEMBER 13th**