

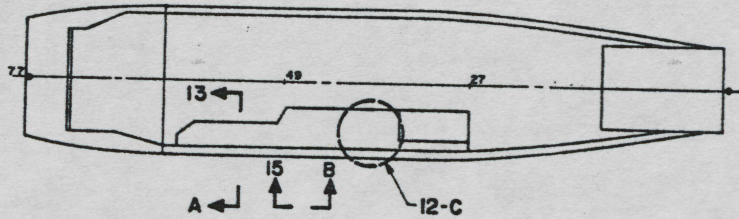
REVISION			
NO.	DATE	DESCRIPTION	APPROVED

TITLE: MODIFICATION TO VRC ANTENNA AND MACHINE GUN FOUNDATION, LCU 1667-1679 DRAWN BY: [Signature] CHECKED BY: [Signature] DATE: 14 AUG 68	DESIGNED BY: [Signature] DATE: 14 AUG 68 APPROVED FOR PRODUCTION: [Signature] DATE: 21 AUG 68	U.S. ARMY QUALITY EQUIPMENT RESEARCH AND DEVELOPMENT COMMAND FORT BELVOIR, VIRGINIA 22060 MODIFICATION TO VRC ANTENNA AND MACHINE GUN FOUNDATION, LCU 1667-1679 PART NO. 97403 SCALE: 1:1
---	--	---

STATUS OF DRAWING		DATE	APPROVAL
NO.	DESCRIPTION		

REFERENCE DRAWINGS		
NO.	DRAWING NO.	TITLE
1	113-4661837	MACHINE GUN FOUNDATION AND MOUNTS (LCU 1671-1676)
2	700-4634443	MACHINE GUN TOWS & MOUNT (LCU 1666-1670)
3	408-4634406	ANTENNA SYSTEM (LCU 1667-1670)
4	408-4661583	ANTENNA SYSTEM (LCU 1671-1676)

- NOTES:
1. PROVIDE SUFFICIENT LENGTH OF ELECTRICAL CABLE TO ALLOW ANTENNA TO FOLD DOWN.
 2. ALL FABRICATION WELDING AND INSPECTION TO BE IN ACCORDANCE WITH NAVSEA 0000-1P-01A-0010, WELD SIZES BASED ON USE OF AWS A5.1, CLASS E7018 ELECTRODES FOR LC STEEL TO LC STEEL.
 3. TEMPLATE ALL WORK FROM LCU AND EQUIPMENT.
 4. EQUIPMENT AND WORKMANSHIP SHALL BE IN ACCORDANCE WITH USCG, ARS AND IEEE AS REGULATIONS.
 5. COMPONENTS SHOWN BY SOLID, HEAVY LINES ARE NEW, ORDERED AND INSTALLED IN ACCORDANCE WITH THIS DRAWING. LIGHT, DOTTED OR PHANTOM LINES INDICATE COMPONENTS EXISTING OR ORDERED ON AND INSTALLED BY DRAWINGS REFERENCED AS NOTED.
 6. REPAIR ALL PAINT DAMAGED BY THIS INSTALLATION AND PAINT ALL NEW STEEL IN ACCORDANCE WITH U.S. ARMY TECHNICAL BULLETIN TMS-0104.
 7. MATERIAL ORDERED ON THIS DRAWING IS NOT INTENDED TO BE RESTRICTIVE. SUBSTITUTION OF EQUAL QUALITY MATERIAL MAY BE MADE.
 8. SLIGHT DEVIATIONS FROM DIMENSIONS SHOWN ARE PERMISSIBLE TO SUIT ACTUAL CONDITIONS FOUND ABOARD THE VESSEL.
 9. MAST AND MAST CHAIR TO BE LOCATED SO THAT MAST CLEARS LIFE RAFTS AND THEIR TIEBOOMS WHEN MAST IS FOLDED DOWN.



KEY PLAN 6-A
SCALE NONE

YARD	ID	70707	1182	AR	ADHESIVE CONTACT (BOSTIK)	CONL	
YARD 6				1	SHEET, 1/4" THK X 3' X 6'	ASTM A283C	STEEL
YARD 6				1	ANGLE, 2 1/2" X 2 1/2" X 1/4" X 8' L	ASTM A36	STEEL
YARD 7				1	PIPE, BLACK 180B, 1 1/2" PIPE SIZE X SCHED 40	ASTM A120	STEEL
YARD 8			HW425/9-122	5	STUFFING TUBE, SIZE 8, STRAIGHT, SYMBOL 1571	MIL-S-24235/9	STEEL
YARD 8				5	PIPE, BLACK 180B, 1/2" PIPE SIZE X SCHED 40	ASTM A120	STEEL
YARD 4			H811M2-17	2	WGT. SELF-LOCKING WEL, 3/8"-16 UNC-2B, CO PL		STEEL
YARD 3			H8271B3-14	2	WASHER, FLAT, 408" 18 CO PL		STEEL
YARD 2		01500	63-3	2	SCREW, SHUNLDER, SOCKET HD, 1/2" SHOULDER DIA X 300' L (WELD TOOL)		ALLOY STL
YARD 1			TP-3100	2	TOGGLE PIN, 3/8" DIA X 6/8" L WITH CHAIN 12" L (DOVER)	CONL	ST STL

PARTS LIST		DATE		U.S. ARMY BIDDING COMPONENT	
NO. PARTS	1 51 2	DATE	4 JUN 64	REMOVED AND DEVELOPMENT CONTRACT	
TWO PLANS	1 83 3	DATE	28 JUN 64	FIRST DELIVER, THROUGH 7200	
THREE PLANS	1 833 4	DATE			
FOUR PLANS	1 833 5	DATE			
FIVE PLANS	1 833 6	DATE			
SIX PLANS	1 833 7	DATE			
SEVEN PLANS	1 833 8	DATE			
EIGHT PLANS	1 833 9	DATE			
NINE PLANS	1 833 10	DATE			
TEN PLANS	1 833 11	DATE			
ELEVEN PLANS	1 833 12	DATE			
TWELVE PLANS	1 833 13	DATE			
THIRTEEN PLANS	1 833 14	DATE			
FOURTEEN PLANS	1 833 15	DATE			
FIFTEEN PLANS	1 833 16	DATE			
SIXTEEN PLANS	1 833 17	DATE			
SEVENTEEN PLANS	1 833 18	DATE			
EIGHTEEN PLANS	1 833 19	DATE			
NINETEEN PLANS	1 833 20	DATE			
TWENTY PLANS	1 833 21	DATE			
TWENTY ONE PLANS	1 833 22	DATE			
TWENTY TWO PLANS	1 833 23	DATE			
TWENTY THREE PLANS	1 833 24	DATE			
TWENTY FOUR PLANS	1 833 25	DATE			
TWENTY FIVE PLANS	1 833 26	DATE			
TWENTY SIX PLANS	1 833 27	DATE			
TWENTY SEVEN PLANS	1 833 28	DATE			
TWENTY EIGHT PLANS	1 833 29	DATE			
TWENTY NINE PLANS	1 833 30	DATE			
THIRTY PLANS	1 833 31	DATE			
THIRTY ONE PLANS	1 833 32	DATE			
THIRTY TWO PLANS	1 833 33	DATE			
THIRTY THREE PLANS	1 833 34	DATE			
THIRTY FOUR PLANS	1 833 35	DATE			
THIRTY FIVE PLANS	1 833 36	DATE			
THIRTY SIX PLANS	1 833 37	DATE			
THIRTY SEVEN PLANS	1 833 38	DATE			
THIRTY EIGHT PLANS	1 833 39	DATE			
THIRTY NINE PLANS	1 833 40	DATE			
FOURTY PLANS	1 833 41	DATE			
FOURTY ONE PLANS	1 833 42	DATE			
FOURTY TWO PLANS	1 833 43	DATE			
FOURTY THREE PLANS	1 833 44	DATE			
FOURTY FOUR PLANS	1 833 45	DATE			
FOURTY FIVE PLANS	1 833 46	DATE			
FOURTY SIX PLANS	1 833 47	DATE			
FOURTY SEVEN PLANS	1 833 48	DATE			
FOURTY EIGHT PLANS	1 833 49	DATE			
FOURTY NINE PLANS	1 833 50	DATE			
FIFTY PLANS	1 833 51	DATE			
FIFTY ONE PLANS	1 833 52	DATE			
FIFTY TWO PLANS	1 833 53	DATE			
FIFTY THREE PLANS	1 833 54	DATE			
FIFTY FOUR PLANS	1 833 55	DATE			
FIFTY FIVE PLANS	1 833 56	DATE			
FIFTY SIX PLANS	1 833 57	DATE			
FIFTY SEVEN PLANS	1 833 58	DATE			
FIFTY EIGHT PLANS	1 833 59	DATE			
FIFTY NINE PLANS	1 833 60	DATE			
SIXTY PLANS	1 833 61	DATE			
SIXTY ONE PLANS	1 833 62	DATE			
SIXTY TWO PLANS	1 833 63	DATE			
SIXTY THREE PLANS	1 833 64	DATE			
SIXTY FOUR PLANS	1 833 65	DATE			
SIXTY FIVE PLANS	1 833 66	DATE			
SIXTY SIX PLANS	1 833 67	DATE			
SIXTY SEVEN PLANS	1 833 68	DATE			
SIXTY EIGHT PLANS	1 833 69	DATE			
SIXTY NINE PLANS	1 833 70	DATE			
SEVENTY PLANS	1 833 71	DATE			
SEVENTY ONE PLANS	1 833 72	DATE			
SEVENTY TWO PLANS	1 833 73	DATE			
SEVENTY THREE PLANS	1 833 74	DATE			
SEVENTY FOUR PLANS	1 833 75	DATE			
SEVENTY FIVE PLANS	1 833 76	DATE			
SEVENTY SIX PLANS	1 833 77	DATE			
SEVENTY SEVEN PLANS	1 833 78	DATE			
SEVENTY EIGHT PLANS	1 833 79	DATE			
SEVENTY NINE PLANS	1 833 80	DATE			
EIGHTY PLANS	1 833 81	DATE			
EIGHTY ONE PLANS	1 833 82	DATE			
EIGHTY TWO PLANS	1 833 83	DATE			
EIGHTY THREE PLANS	1 833 84	DATE			
EIGHTY FOUR PLANS	1 833 85	DATE			
EIGHTY FIVE PLANS	1 833 86	DATE			
EIGHTY SIX PLANS	1 833 87	DATE			
EIGHTY SEVEN PLANS	1 833 88	DATE			
EIGHTY EIGHT PLANS	1 833 89	DATE			
EIGHTY NINE PLANS	1 833 90	DATE			
NINETY PLANS	1 833 91	DATE			
NINETY ONE PLANS	1 833 92	DATE			
NINETY TWO PLANS	1 833 93	DATE			
NINETY THREE PLANS	1 833 94	DATE			
NINETY FOUR PLANS	1 833 95	DATE			
NINETY FIVE PLANS	1 833 96	DATE			
NINETY SIX PLANS	1 833 97	DATE			
NINETY SEVEN PLANS	1 833 98	DATE			
NINETY EIGHT PLANS	1 833 99	DATE			
NINETY NINE PLANS	1 833 100	DATE			

MODIFICATION TO VRC
ANTENNA AND MACHINE GUN
FOUNDATION, LCU 1667-1679

A1 97403 13226E8048

