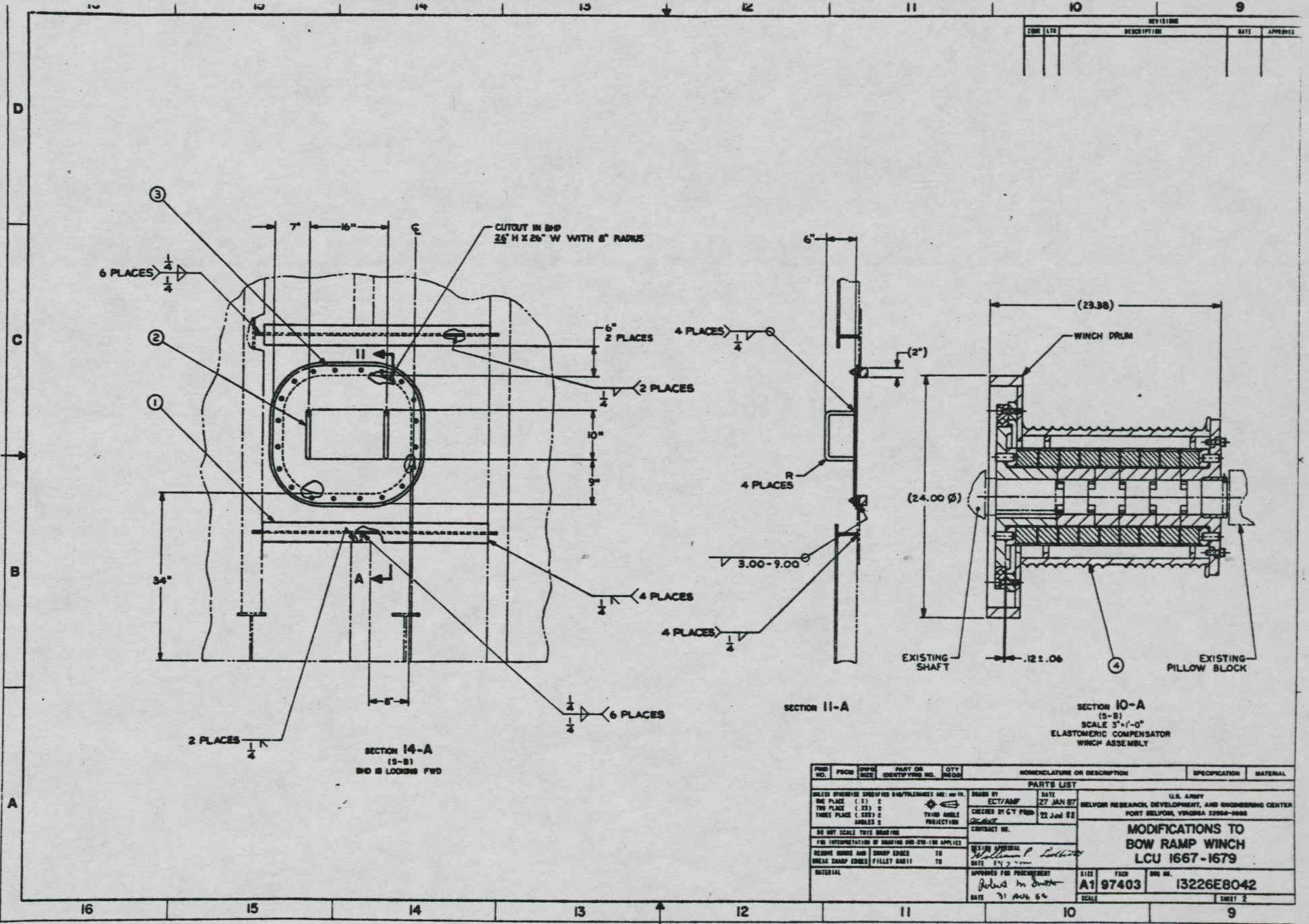


REVISING		DATE	APPROVED
ZONE	LTG		



FORM NO.	PSGR	ISSUE	PART OR IDENTIFYING NO.	QTY. REQD.	NOMENCLATURE OR DESCRIPTION	SPECIFICATION	MATERIAL
PARTS LIST							
UNLESS OTHERWISE SPECIFIED AS FOLLOWS: REF. TO:	DRWG BY	DATE	U.S. ARMY				
ONE PLACE (1) 1	ECT/AMF	27 JAN 67	BELVOR RESEARCH, DEVELOPMENT, AND ENGINEERING CENTER				
TWO PLACE (2) 2	CHECKED BY	22 Jun 68	FORT BELVOR, VIRGINIA 22060-0000				
THREE PLACE (3) 3	PROJECT		CONTRACT NO.				
DO NOT SCALE THIS DRAWING	DESIGN APPROVAL		MODIFICATIONS TO BOW RAMP WINCH LCU 1667-1679				
FOR INTERPRETATION OF DRAWING PER STD-100 APPLIES	DATE						
REMOVE BURRS AND CHAMP EDGES TO	APPROVED FOR PROCUREMENT		SIZE	PSGR	ISS. NO.	13226E8042 SHEET 2	
BREAK CHAMP EDGES, FILLET RADIUS TO	DATE		A1	97403			
MATERIAL			SCALE				

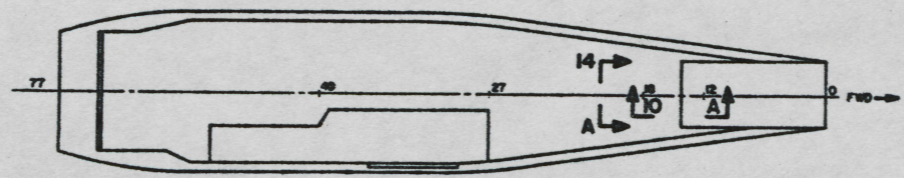
D
C
B
A

NOTES:

1. ALL FABRICATION WELDING AND INSPECTION TO BE IN ACCORDANCE WITH NAVSEA 0900-LP-014-5010.
2. EQUIPMENT AND WORKMANSHIP SHALL BE IN ACCORDANCE WITH USCS, ABS, AND IEEE 45 REGULATIONS.
3. SLIGHT DEVIATION FROM DIMENSIONS SHOWN ARE PERMISSIBLE TO SUIT ACTUAL CONDITIONS FOUND ABOARD THE VESSEL.
4. REPAIR ALL PAINT DAMAGED BY THIS INSTALLATION AND PAINT ALL NEW STEEL IN ACCORDANCE WITH U.S. ARMY TECHNICAL BULLETIN TM9-5149.
5. COMPONENTS SHOWN BY SOLID, HEAVY LINES ARE NEW, ORDERED AND INSTALLED IN ACCORDANCE WITH THIS DRAWING. LIGHT, DASHED OR PHANTOM LINES INDICATE COMPONENTS EXISTING OR ORDERED ON AND INSTALLED BY DRAWINGS REFERENCED AS NOTED.

REFERENCE DRAWINGS		
NO.	DRAWING NO.	TITLE
1	110-461541	TRAMP, INCH FRS. 9 TO 20
2	113-461534	RAMP WINCH AND ANCHOR WINCH FOUNDATIONS
3	110-463430	TRAMP, INCH (4-25)
4	113-463434	RAMP WINCH FOUNDATIONS AND GEAR

NO.	DATE	BY	STATUS OF REVISION	
			DESCRIPTION	APPROVED



KEY PLAN 6-B
SCALE NONE

QTY	DESCRIPTION	UNIT	MATERIAL		
4	27826	30151A-100	1 ELASTOMERIC COMPENSATING WINCH (MURDOCK ENG)	COIL	VARIOUS
3	97537	PAGE 13-11	1 OILTIGHT & WATERTIGHT HAINSOLE, 26" X 26" OPENING WITH 8" CORNER RAILS (LAMIPEP 1ND)	COIL	STEEL
2			2 BAR, ROUND, 3/4" NOM DIA	ASTN A36	STEEL
1			2 BAR, TEL, 4.00" X 4.00" X 1/4"	ASTN A36	STEEL

PART'S LIST		PART'S LIST	
UNLESS OTHERWISE SPECIFIED DIMENSIONS ARE: ALL DIMENSIONS IN INCHES	DESIGNED BY	DATE	U.S. ARMY
THE PLACE (S) 2	EST/AMP	27 JAN 67	RESEARCH, DEVELOPMENT, AND ENGINEERING CENTER
THIRD PLACE (S) 2	CHECKED BY LT Phil	21 JAN 67	PORT BELVOIR, VIRGINIA 23060-0000
FOURTH PLACE (S) 2	PROJECT NO.		
DO NOT SCALE THIS DRAWING	CONTRACT NO.		
FOR INFORMATION OF SHOPPER AND EST-110 APPLIES	REVISION APPROVAL		
REMOVE BORDS AND SHARP EDGES TO	DATE	10 2 1966	
BREAK SHARP EDGES FILLET RADIUS TO	APPROVED FOR PURCHASEMENT		
	DATE	31 AUG 68	
	QTY	793	13226E8042
	SCALE	1 1/2" = 1' 0"	SHEET 1 OF 2

8 7 6 5 4 3 2 1