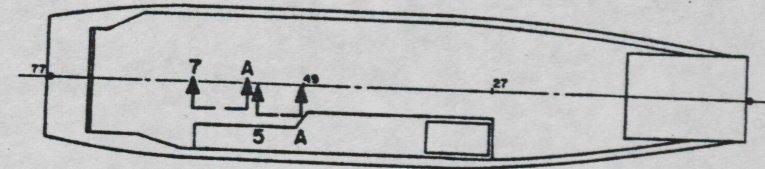


NOTES:

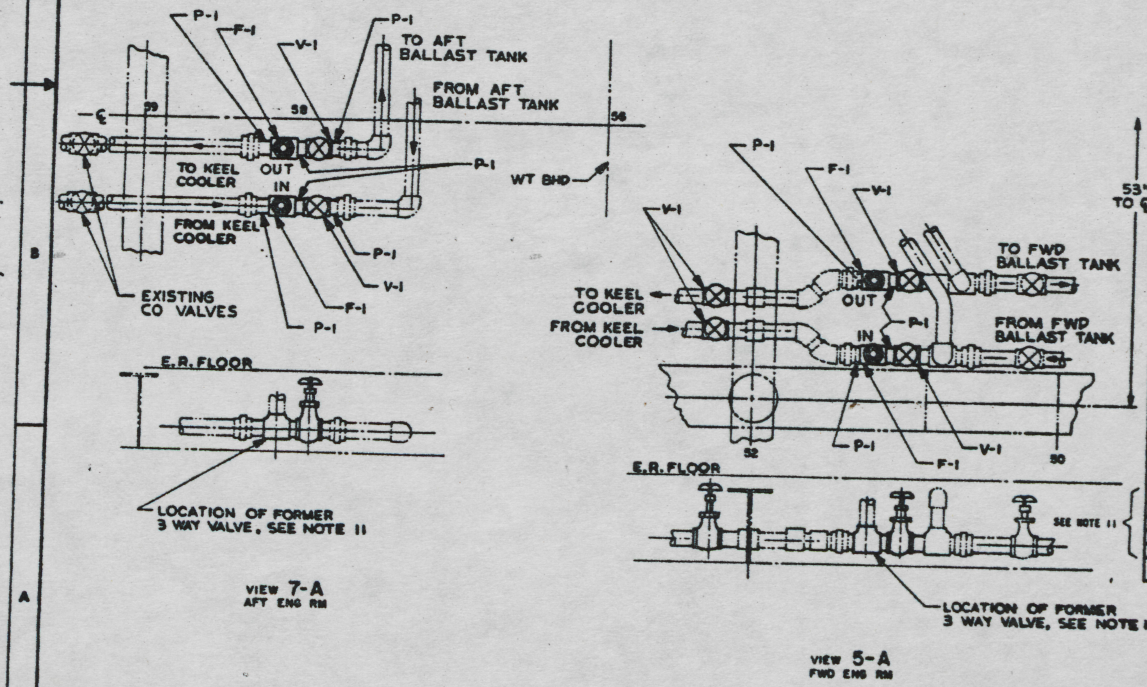
1. ALL FABRICATION WELDING AND INSPECTION TO BE IN ACCORDANCE WITH NAVSEA 0000-LP-014-0010.
2. TEMPLATE ALL WORK FROM LCU AND EQUIPMENT.
3. EQUIPMENT AND WORKMANSHIP SHALL BE IN ACCORDANCE WITH USCG AND ABS REGULATIONS.
4. REPAIR ALL PAINT DAMAGED BY THIS INSTALLATION AND PAINT ALL NEW PIPING IN ACCORDANCE WITH U.S. ARMY TECHNICAL BULLETIN 7043-0100.
5. MATERIAL ORDERED ON THIS DRAWING IS NOT INTENDED TO BE RESTRICTIVE. SUBSTITUTION OF EQUAL QUALITY MATERIAL MAY BE MADE.
6. DEVIATIONS FROM DIMENSIONS SHOWN ARE PERMISSIBLE TO SUIT ACTUAL CONDITIONS FOUND ABOARD THE VESSEL.
7. COMPONENTS SHOWN BY SOLID, HEAVY LINES ARE NEW, ORDERED AND INSTALLED IN ACCORDANCE WITH THIS DRAWING. LIGHT, BROKEN OR PHANTOM LINES INDICATE COMPONENTS EXISTING OR ORDERED ON AND INSTALLED BY DRAWINGS REFERENCED AS NOTED.
8. PIPING SHALL BE SUITABLY SECURED BY PIPE BANDS TO PREVENT VIBRATION AND PROTECT AGAINST DAMAGE IN ACCORDANCE WITH NAVSEA 004-1300701.
9. PIPING SYSTEM SHALL BE THOROUGHLY CLEANED BY FLUSHING WITH THE MEDIUM FOR WHICH THE SYSTEM IS INTENDED.
10. PIPING SHALL BE TESTED HYDROSTATICALLY WITH WATER AND ALL JOINTS INSPECTED FOR TIGHTNESS.
11. CUT ACCESS HOLES IN ENGINE ROOM FLOOR PLATES FOR GATE VALVES, V-1. PROVIDE HINGED COVERS OVER ACCESS HOLES, US-WE FIND NO. 1 THRU 5. REPLACE FLOOR PLATES IN AREA OF FORMER 3 WAY VALVE WITH FIND NO. 1, AS REQUIRED.

REFERENCE DRAWINGS		
NO.	DRAWING NO.	TITLE
1	208-4634387	HW & ADA, ENG. COOLING ASST. & DETAILS

REVISIONS			
NO.	DATE	DESCRIPTION	BY



KEY PLAN 2-C
SCALE NONE



YARD	NO.	DESCRIPTION	QTY	UNIT	REMARKS	COM.	SYMBOL
YARD	V-1	DOOR	1		VALVE, GATE, 1 1/2", 150 LB WSP, WITH 5/8" RING (HALF NORTH)	COM.	BRONZE
YARD	F-1	TYPE A	6		TEE, 1 1/2" x 1 1/2" x 1 1/2" IPS, WITH 5/8" RING	WIL-F-1180/2	BRONZE
YARD	P-1	SH C70800	AR		PIPE, 1 1/2" IPS x .075" WALL, SMLS, ANNEALED	ASTM B360	CSA
YARD	5	MILB040-2204	26		ROD, HEX, 1/4"-20 UNC-2B		
YARD	6	MILB330-130	26		WASHER LOCK, SPRING, 1/8" BOW SIZE		CRS
YARD	3	MILB307-300	26		SCREW, CAP HEX HD, 1/4"-20 UNC-2B x 5/8" L		CRS
YARD	2	1088A27	3		HUBS, 1 1/2" O.D. THICK x 1/4" (MCH-CARD)	COM.	CRS
YARD	1	SLY 0011-10	26		THUMB PLATE, 3/4" WID, SLANTED PATTERN SEE NOTE 11	COM.	CRS

<p>DESIGN APPROVAL</p> <p>DATE: 31 AUG 67</p> <p>BY: [Signature]</p>	<p>REVISIONS</p> <p>NO. DATE DESCRIPTION</p>	<p>PROJECT NO. 97403</p> <p>DATE: 31 AUG 67</p>	<p>U.S. NAVY QUALITY PROGRAM</p> <p>RESEARCH AND DEVELOPMENT COMMAND</p> <p>POST BELLEVILLE, VIRGINIA 22060</p> <p>MODIFICATION TO SHIPS SERVICE GENERATOR COOLING SYSTEM, LCU 1667-1670</p> <p>NO. 97403</p> <p>13226E8054</p> <p>SCALE: 1 1/2" = 1'-0"</p> <p>FIG. 1 OF 1</p>
--	--	---	--