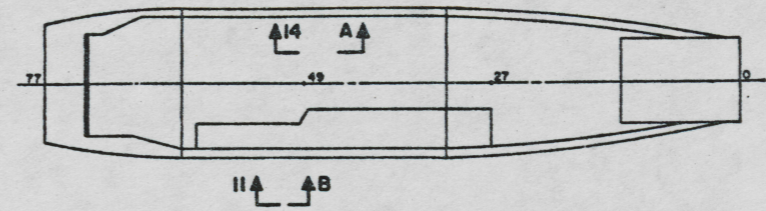


- NOTES:
- 1.
 2. ALL FABRICATION WELDING AND INSPECTION TO BE IN ACCORDANCE WITH NAVSEA 0900-LP-010-6010, WELD SIZES BASED ON USE OF AWS A5.1, CLASS E7018 ELECTRODES FOR LC STEEL TO LC STEEL.
 3. TEMPLATE ALL WORK FROM LCU AND EQUIPMENT.
 4. EQUIPMENT AND WORKMANSHIP SHALL BE IN ACCORDANCE WITH USCG AND ABS REGULATIONS.
 5. COMPONENTS SHOWN BY SOLID HEAVY LINES ARE NEW, ORDERED AND INSTALLED IN ACCORDANCE WITH THIS DRAWING. LIGHT DROCKES OR PHANTOM LINES INDICATE COMPONENTS EXISTING OR ORDERED ON AND INSTALLED BY DRAWINGS REFERENCED AS NOTED.
 6. REPAIR ALL PAINT DAMAGED BY THIS INSTALLATION AND PAINT ALL NEW STEEL IN ACCORDANCE WITH U.S. ARMY TECHNICAL BULLETIN TM93-0104.
 7. MATERIAL ORDERED ON THIS DRAWING IS NOT INTENDED TO BE RESTRICTIVE. SUBSTITUTION OF EQUAL QUALITY MATERIAL MAY BE MADE.
 8. SLIGHT DEVIATIONS FROM DIMENSIONS SHOWN ARE PERMISSIBLE TO SUIT ACTUAL CONDITIONS FOUND ABOARD THE VESSEL.
 9. BULKHEAD PENETRATION SHALL BE IN ACCORDANCE WITH NAVSEA DRAWING 810-2145001.

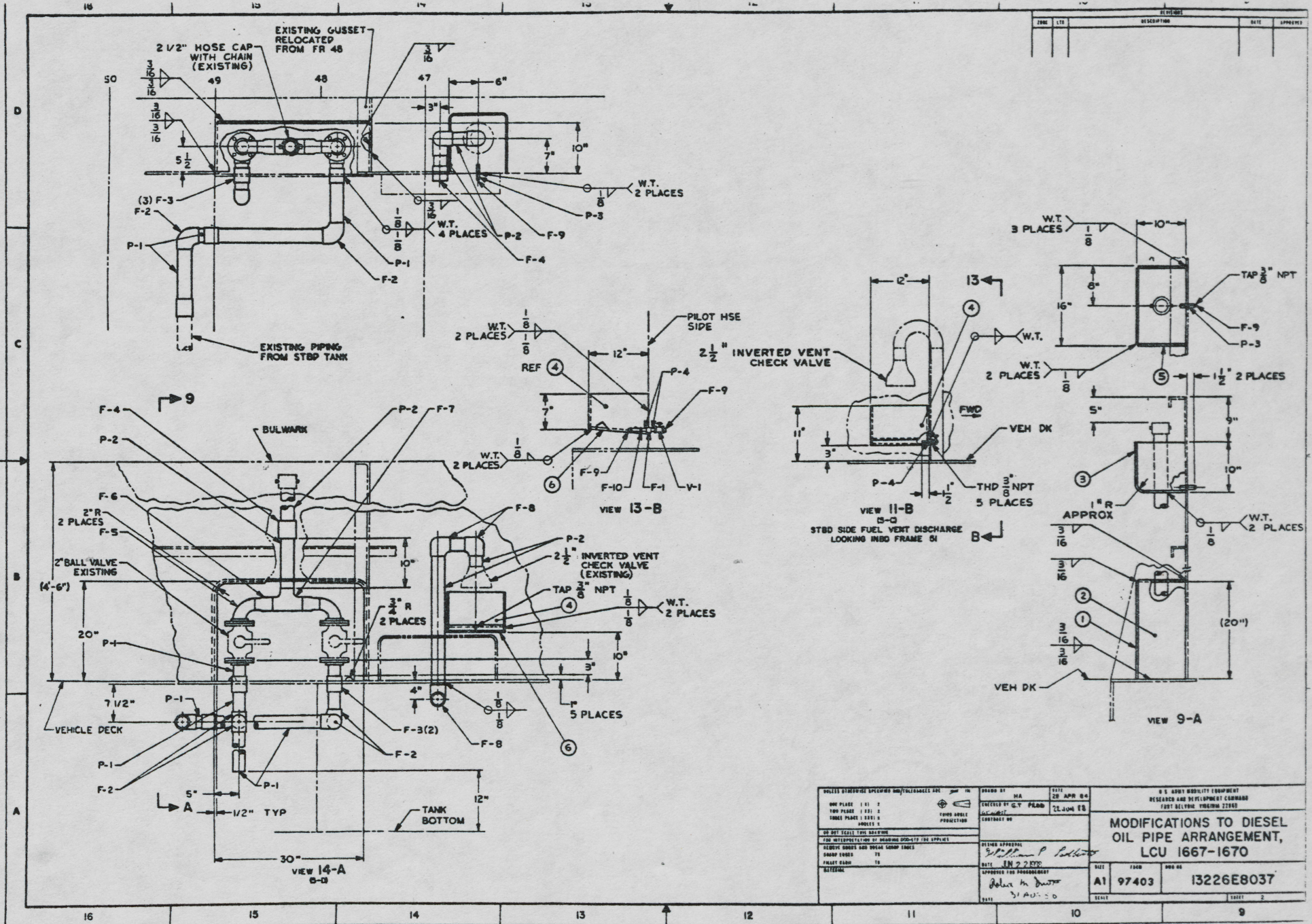


KEY PLAN
SCALE NONE

REFERENCE DRAWINGS		
NO.	DRAWING NO.	TITLE
1	811-4630018	DIESEL OIL PIPE ARR
2	118-4634267	BULKHEAD ARREST AND DETS

YARD	NO.	QTY	DESCRIPTION	UNIT	REMARKS	COIL	MATERIAL
YARD	V-1	76304	1110M	1	VALVE, GATE, 125 SWP, 200 WOG, 3/8" RPT (MILWAUKEE)	CONL	BRONZE
YARD	F-10		0-6-6-140K30CA	1	PIPE, TEE, INTERNAL, INTERNAL, INTERNAL, 3/8" RPT	SAE J514	STL
YARD	F-9			3	PLUG, SOLID, 3/8" DIA, 3/8" NOM PIPE SIZE	ASTM A19.14	STL
YARD	F-8			1	2 1/2" 90° ELBOW, 100 LB, THREADED	ASTM A19.3	NI
YARD	F-7			1	2 1/2" STRAIGHT TEE, 90	ASTM A19.3	STL
YARD	F-6			2	2 1/2" x 2" CONC REDUCER, 90	ASTM A19.3	STL
YARD	F-5			2	2" 90° ELBOW, LONG RAD, 90	ASTM A19.3	STL
YARD	F-4			2	2 1/2" COMPLING, 3000 LB, THREADED	ASTM A19.11	FRT
YARD	F-3			5	2" COMPLING, 3000 LB, THREADED	ASTM A19.11	FRT
YARD	F-2			5	2" 90° ELBOW, 100 LB, THREADED	ASTM A19.3	NI
YARD	F-1			1	CONNECTION, 3/8" RPT		
YARD	F-1			1	SEE NOTE 9		
YARD	P-8			AR	PIPE, SEAMLESS, BLACK, 3/8" NOM SIZE X SCHED 40	ASTM A53	STL
YARD	P-3			2	PIPE, SEAMLESS, BLACK, 1/2" NOM SIZE X SCHED 40 X 4" L	ASTM A53	STL
YARD	P-2			AR	PIPE, SEAMLESS, BLACK, 1/2" NOM SIZE X SCHED 40	ASTM A53	STL
YARD	P-1			AR	PIPE, SEAMLESS, BLACK, 2" NOM SIZE X SCHED 40	ASTM A53	STL
YARD	6			2	SHEET, 10 GA THK X 12" X 12"	ASTM A500	STL
YARD	5			2	SHEET, 10 GA THK X 10" X 10"	ASTM A500	STL
YARD	4			2	SHEET, 10 GA THK X 8" X 35 3/8"	ASTM A500	STL
YARD	3			1	SHEET, 10 GA THK X 16" X 19 5/8"	ASTM A500	STL
YARD	2			1	PLATE, 3/16" THK X 10" X 20"	ASTM A500	STL
YARD	1			1	PLATE, 3/16" THK X 16" X 20"	ASTM A500	STL

SHEET SPECIFICATIONS SHEET/SPECIFICATIONS SHEET ONE PLANT (1) : TWO PLANT (2) : THREE PLANT (3) : SHEET 1 : SHEET 2 :	DRAWN BY: [Signature] CHECKED BY: [Signature] DATE: JUN 2 1977 APPROVED FOR PRODUCTION: [Signature] DATE: 3-2-77	PARTS LIST 0. S. ARMY MOBILITY EQUIPMENT RESEARCH AND DEVELOPMENT COMMAND FORT BELVOIR, VIRGINIA 22060 MODIFICATIONS TO DIESEL OIL PIPE ARRANGEMENT, LCU 1667-1670 SIZE: A1 FIG: 97403 QTY: 13226E8037 SCALE: 1/2" = 1'-0" SHEET 1 OF 1
--	--	---



FORM	DATE	DESCRIPTION	DATE	APPROVED

SHEET STANDARD SPECIFICATIONS AND TOLERANCES ARE TO BE USED UNLESS OTHERWISE SPECIFIED. ONE PLACE () 1 TWO PLACES () 2 THREE PLACES () 3 FOUR PLACES () 4 FIVE PLACES () 5 SIX PLACES () 6 SEVEN PLACES () 7 EIGHT PLACES () 8 NINE PLACES () 9 TEN PLACES () 10 ELEVEN PLACES () 11 TWELVE PLACES () 12 THIRTEEN PLACES () 13 FOURTEEN PLACES () 14 FIFTEEN PLACES () 15 SIXTEEN PLACES () 16	DRAWN BY: MA CHECKED BY: C.Y. FLECK DESIGNED BY: J. H. BAKER DATE: 28 APR 64 APPROVED FOR PRODUCTION: [Signature] DATE: 1 JUN 64 APPROVED FOR PRODUCTION: [Signature] DATE: 31 AUG 64	U.S. ARMY MOBILITY EQUIPMENT RESEARCH AND DEVELOPMENT COMMAND FORT BELVOIR, COLORADO 80705 MODIFICATIONS TO DIESEL OIL PIPE ARRANGEMENT, LCU 1667-1670 A1 97403 13226E8037
--	--	---