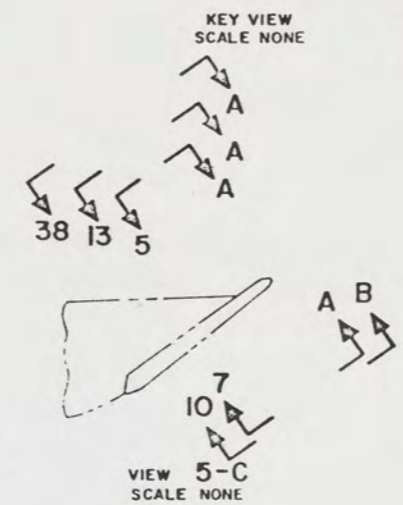
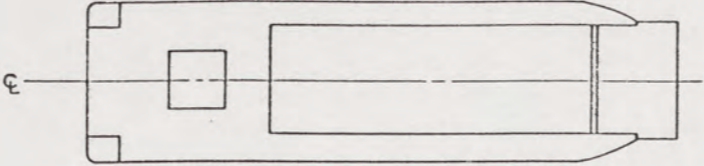


NOTES:

1. THIS DRAWING HAS BEEN DEVELOPED FROM SHIPCHECK INFORMATION FOR ACCOMPLISHING THE INSTALLATION OF RHINO-HORN SOCKET ASSY TO LCM-8, MOD 1.
2. ALL FABRICATION WELDING AND INSPECTION TO BE IN ACCORDANCE WITH NAVSEA 0900-LP-014-5010, WELD SIZES BASED ON USE OF AWS A5.1, CLASS E7018 ELECTRODES FOR LC STEEL TO LC STEEL.
3. EQUIPMENT AND WORKMANSHIP SHALL BE IN ACCORDANCE WITH USCG AND ABS REGULATIONS.
4. REPAIR ALL PAINT DAMAGED BY THIS INSTALLATION AND PAINT ALL NEW STEEL IN ACCORDANCE WITH U.S. ARMY TECHNICAL BULLETIN TB43-0144.
5. MATERIAL ORDERED ON THIS DRAWING IS NOT INTENDED TO BE RESTRICTIVE. SUBSTITUTION OF EQUAL QUALITY MATERIAL MAY BE MADE EXCEPT FOR ITEMS MARKED "GFE".
6. SLIGHT DEVIATIONS FROM DIMENSIONS SHOWN ARE PERMISSIBLE TO SUIT ACTUAL CONDITIONS FOUND ABOARD THE VESSEL.
7. COMPONENTS SHOWN BY SOLID, HEAVY LINES ARE NEW, ORDERED AND INSTALLED IN ACCORDANCE WITH THIS DRAWING. LIGHT, BROKEN OR PHANTOM LINES INDICATE COMPONENTS EXISTING OR ORDERED ON AND INSTALLED BY DRAWING REFERENCES AS NOTED.
8. SIZES INDICATED IN BILL OF MATERIAL ARE SLIGHTLY OVERSIZED AND ARE FOR ORDERING PURPOSES ONLY. THESE ITEMS SHALL BE CUT TO FIT CONDITIONS FOUND ABOARD THE VESSEL.
9. THRU HOLES FOR TUBE, FIND NO. 13, IN PLATES, FIND NO. 7 AND 8, SHALL BE IN-LINE TO WITHIN 1/16".
10. RADIUS IS ELLIPTICAL AND WILL HAVE TO BE ALTERED TO CONFORM TO THE OUTSIDE DIAMETER OF TUBE, FIND NO. 10, DURING ASSEMBLY. SEE VIEW 18-B.
11. EDGE OF PLATE, FIND NO. 28, SHALL BE ROLLED TO CONFORM TO ARC OF RAMP EDGE.

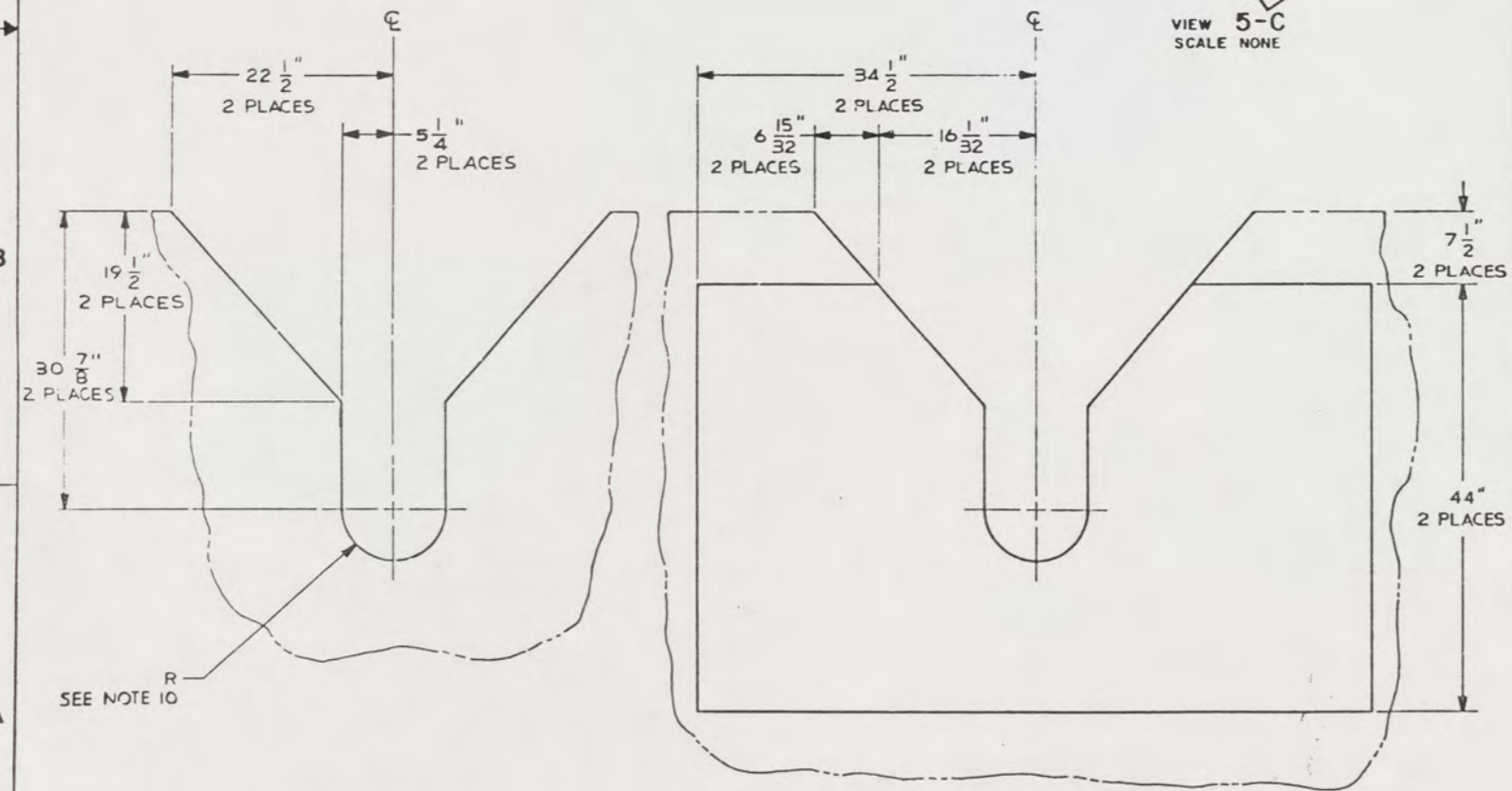
REFERENCE DRAWINGS APPLICABLE TO HULL NUMBERS 8540 THRU 8560 AND 8580 THRU 8618		
NO.	DRAWING NO.	TITLE
1	145-4510974	STRUCTURAL RAMP DETAILS

REFERENCE DRAWINGS APPLICABLE TO HULL NUMBERS 8520 THRU 8539		
NO.	DRAWING NO.	TITLE
1	145-2534227	STRUCTURAL RAMP DETAILS



SHEETS						STATUS OF REVISIONS			
6	5	4	3	2	ZONE	LTR	DESCRIPTION	DATE	APPROVED

THIS DRAWING APPLIES TO HULL NUMBERS 8520 THROUGH 8560 AND 8580 THROUGH 8618 ONLY



YARD	FIND NO.	CAGE	DWG SIZE	PART OR IDENTIFYING NO.	QTY REQD	NOMENCLATURE OR DESCRIPTION	SPECIFICATION	MATERIAL
28				1		PLATE, 5/16" X 37" X 48"	ASTM A36	STEEL
27				2		PLATE, 5/16" X 12" X 21 1/4" L	ASTM A36	STEEL
26	CC-3701-1			2		SLEEVE, BEARING, 3 3/4" OD X 3" ID (OILITE)	COML	BRONZE
25	S-3094			2		SPRING, HELICAL COMPRESSION, 2" OD (CENTURY)	COML	STEEL
24	MS35338-140			8		WASHER, LOCK-SPRING, 5/16" NOM DIA		CRES
23	MS51849-117			8		SCREW, MACHINE, HEX HD, SLOTTED, 5/16"-18 UNC-2A X 7/8" L		STEEL
22				2		PLATE OR BAR, 1/2 X 5" OD	ASTM A36	STEEL
21	CC-3701-1			2		SLEEVE, BEARING, 3 3/4" OD X 3" ID (OILITE)	COML	BRONZE
20	MS35338-51			2		WASHER, LOCK-SPRING, HELICAL, 3/4" NOM DIA		STEEL
19	MS35307-499			2		SCREW, CAP, HEX HD, 3/4-10 UNC-2A X 5" L		CRES
18	17-4PH, COND A			2		BAR, RND, 3" DIA X 11 3/4" L, 40-45 Rc	AMS 5643	CRES
17	MS35338-44			20		WASHER, LOCK-SPRING, 1/4" NOM DIA		STEEL
16	MS90725-6			20		SCREW, CAP, HEX HD, 1/4-20 UNC-2A X 3/4" L		STEEL
15				2		PLATE, 1/8 X 8 1/4" X 1'-6" L	ASTM A36	STEEL
14	MS27127-16			20		NUT, WELDING, HEX, 1/4-20 UNC-2B		STEEL
13	UNS G10260			2		TUBING, RND, MECH, 5" OD X 5/8" WALL X 1'-0 7/8" L	ASTM A519	STEEL
12				2		PLATE, 3/16 X 11 15/16" X 2'-1" L	ASTM A36	STEEL
11				1		PLATE, 3/16 X 11 15/16" X 1'-6 1/2" L	ASTM A36	STEEL
10	UNS G10260			1		TUBING, RND, MECH, 10 1/2" X 1/4" WALL X 1'-1 5/16" L	ASTM A519	STEEL
9				2		PLATE, 3/16 X 11 5/16" X 12 1/4" L	ASTM A36	STEEL
8				2		PLATE, 3/16 X 11 15/16" X 46 1/4" L	ASTM A36	STEEL
7				2		PLATE, 3/16 X 10 7/16" X 10 13/16" L	ASTM A36	STEEL
6				2		PLATE, 3/16 X 11 5/16" X 17 5/16" L	ASTM A36	STEEL
5				2		PLATE, 3/16 X 10 9/16" X 17 5/16" L	ASTM A36	STEEL
4				2		PLATE, 3/16 X 8 11/16" X 10 9/16" L	ASTM A36	STEEL
3				2		PLATE, 1/2 X 10 3/8" X 26 13/16" L	ASTM A36	STEEL
2				2		PLATE, 1/4 X 10 7/8" X 11 3/8" L	ASTM A36	STEEL
1				1		PLATE, 3/16 X 44 1/4" X 5'-9" L	ASTM A36	STEEL

UNLESS OTHERWISE SPECIFIED DIM/TOLERANCES ARE: .001 IN.

ONE PLACE (.1) ± —
TWO PLACE (.01) ± —
THREE PLACE (.001) ± —
ANGLES ± —

FOR INTERPRETATION OF DRAWING DIM-STD-100 APPLIES

REMOVE BURRS AND BREAK SHARP EDGES — TO —
SHARP EDGES — TO —
FILLET RADIUS — TO —

MATERIAL —

DO NOT SCALE THIS DRAWING

DRAWN BY AB/HA DATE 23 NOV 87
CHECKED BY G.T. P... DATE 15 NOV 88
CONTRACT NO. —

DESIGN APPROVAL
DATE —

APPROVED FOR PROCUREMENT
DATE —

U.S. ARMY
BELVOIR RESEARCH, DEVELOPMENT, AND ENGINEERING CENTER
FORT BELVOIR, VIRGINIA 22060-8606

LCM-8, MOD 1,
RHINO-HORN SOCKET
INSTALLATION

SIZE A1
CAGE 97403
SCALE 1/2" = 1'-0"

SGC NO. 13226E9478
SHEET 1 OF 6

106
102

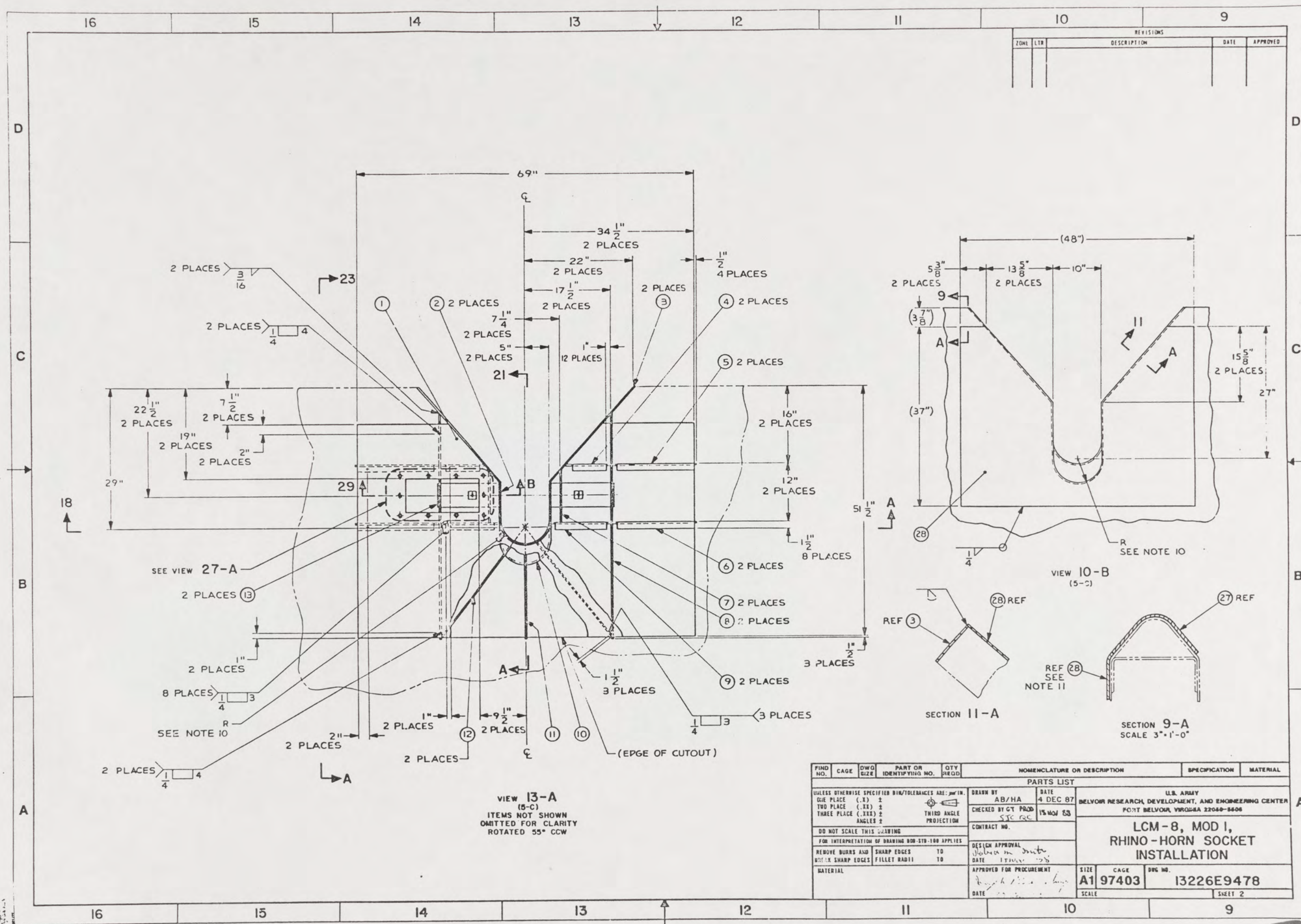


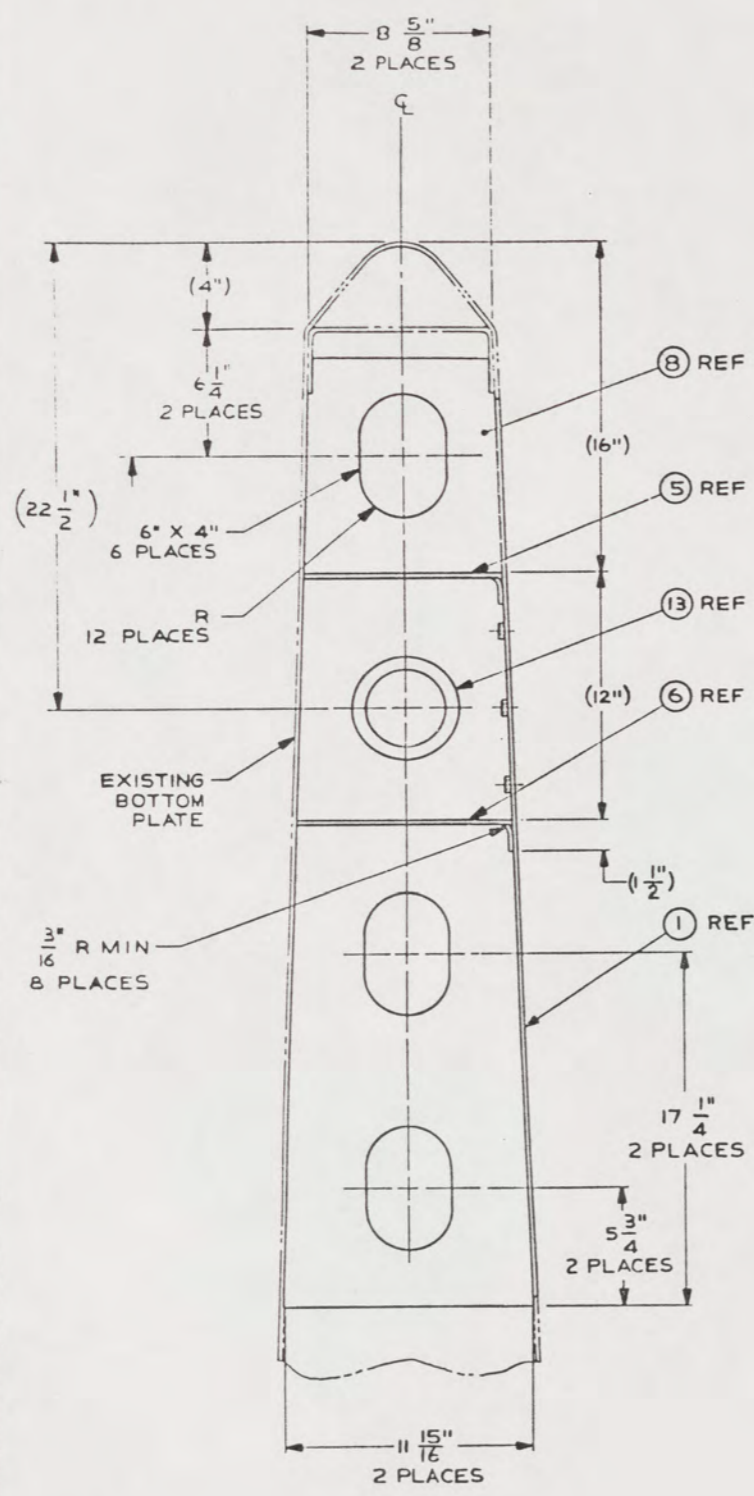
FIG. NO.	CAGE	DWG. SIZE	PART OR IDENTIFYING NO.	QTY. REQ'D.	NOMENCLATURE OR DESCRIPTION	SPECIFICATION	MATERIAL
PARTS LIST							
UNLESS OTHERWISE SPECIFIED DIM/TOLERANCES ARE: .001" IN.					DRAWN BY	DATE	
ONE PLACE (.1)	2	THIRD ANGLE	PROJECTION		AB/HA	4 DEC 87	
TWO PLACE (.01)	2	THIRD ANGLE PROJECTION			CHECKED BY	15 NOV 88	
THREE PLACE (.001)	2	THIRD ANGLE PROJECTION			DATE	17 NOV 88	
DO NOT SCALE THIS DRAWING							
FOR INTERPRETATION OF DRAWING 800-110-100 APPLIES							
REMOVE BURRS AND SHARP EDGES TO					DESIGN APPROVAL		
REMOVE SHARP EDGES FILLET RADII TO					DATE		
MATERIAL					APPROVED FOR PROCUREMENT		
DATE					SIZE		CAGE
SCALE					A1		97403
					DWG. NO.		13226E9478
					SHEET 2		

U.S. ARMY
BELVOR RESEARCH, DEVELOPMENT, AND ENGINEERING CENTER
FORT BELVOR, VIRGINIA 22060-8406

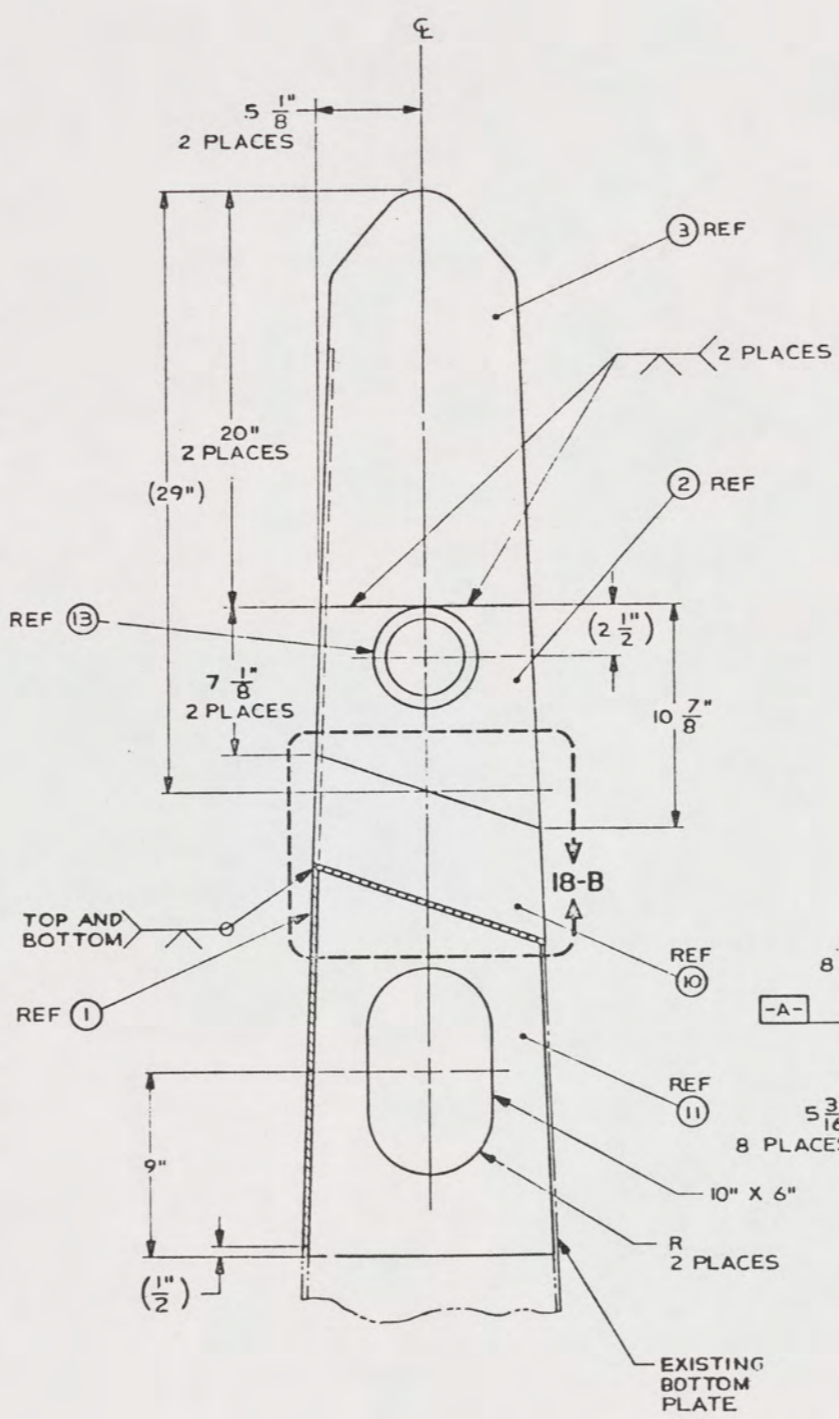
**LCM-8, MOD I,
RHINO-HORN SOCKET
INSTALLATION**

24 23 22 21 20 19 18 17

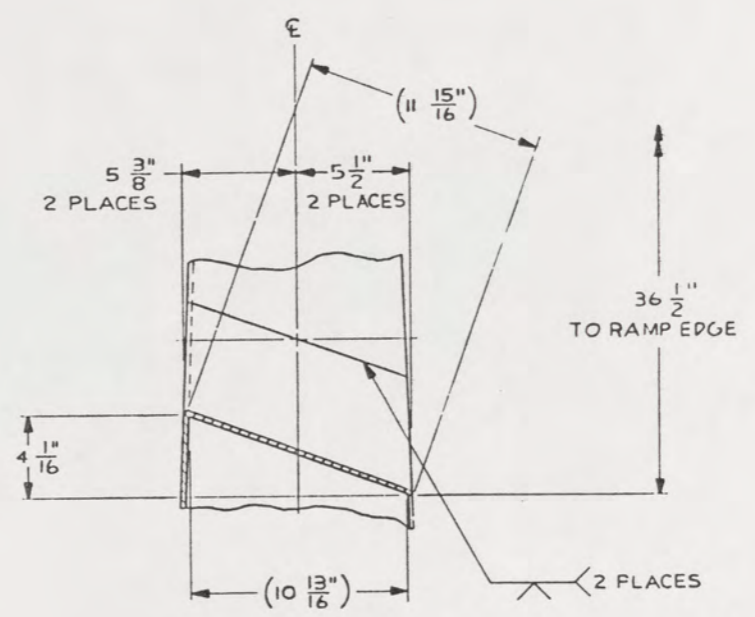
REVISIONS			
NO.	DATE	DESCRIPTION	APPROVED



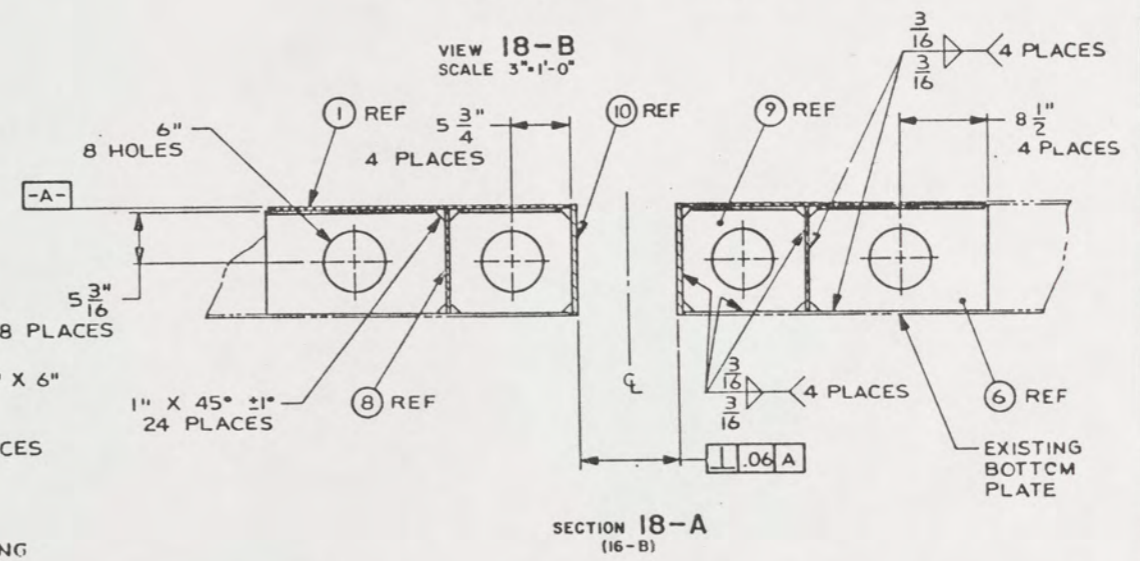
VIEW 23-A
(14-C)
SCALE 3"=1'-0"



SECTION 21-A
(13-C)
SCALE 3"=1'-0"



VIEW 18-B
SCALE 3"=1'-0"



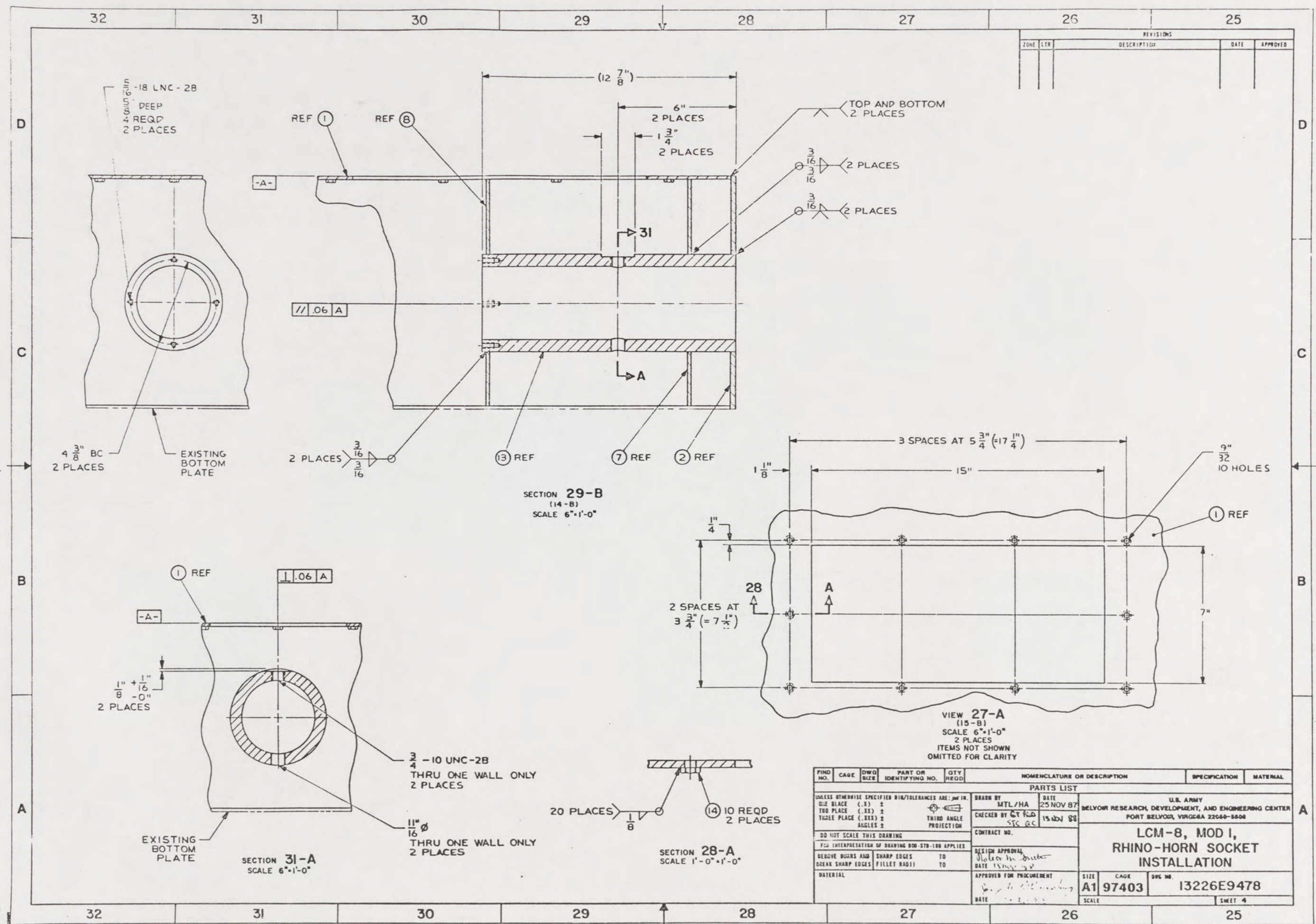
SECTION 18-A
(16-B)

FIND NO.	CAGE	DWG. SIZE	PART OR IDENTIFYING NO.	QTY REQD	NOMENCLATURE OR DESCRIPTION	SPECIFICATION	MATERIAL
PARTS LIST							
UNLESS OTHERWISE SPECIFIED DIM/TOLERANCES ARE: .001 IN.					U.S. ARMY		
DRAWN BY AB/HA					BELVOIR RESEARCH, DEVELOPMENT, AND ENGINEERING CENTER		
DATE 3 NOV 87					FORT BELVOIR, VIRGINIA 22060-8608		
CHECKED BY GT FROM					CONTRACT NO.		
DATE 15 NOV 88					DESIGN APPROVAL		
THIRD ANGLE PROJECTION					DATE 12 NOV 88		
DO NOT SCALE THIS DRAWING					APPROVED FOR PROCUREMENT		
FOR INTERPRETATION OF DRAWING DDG-STD-100 APPLIES					DATE 12 NOV 88		
REMOVE BURRS AND SHARP EDGES TO					SCALE		
BREAK SHARP EDGES FILLET RADIUS TO					SIZE A1		
MATERIAL					CAGE 97403		
					DWG. NO. 13226E9478		
					SHEET 3		

24 23 22 21 20 19 18 17

108
104

37



REVISIONS				
ZONE	LTR	DESCRIPTION	DATE	APPROVED

SECTION 29-B
(14-B)
SCALE 6"=1'-0"

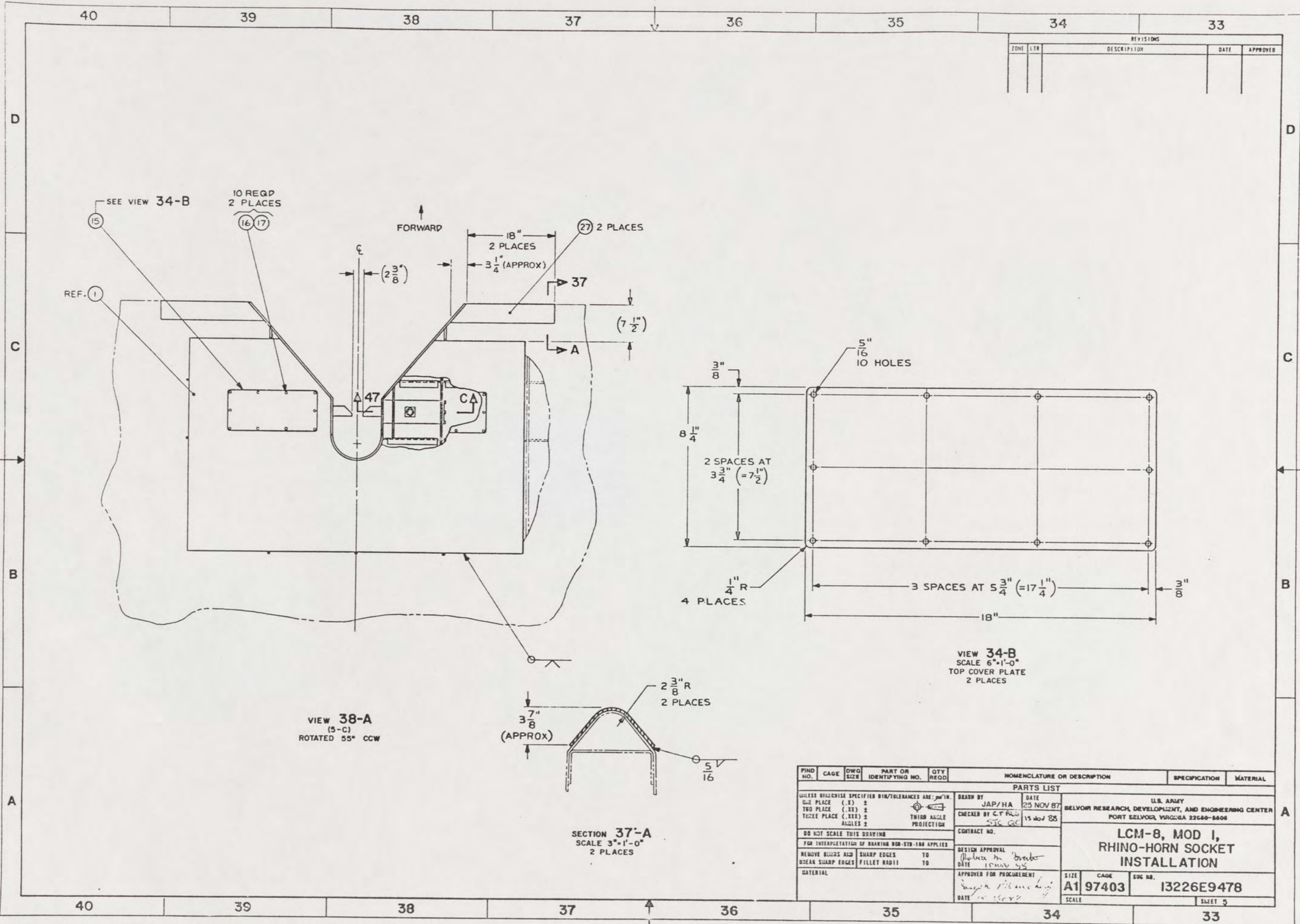
SECTION 31-A
SCALE 6"=1'-0"

SECTION 28-A
SCALE 1'-0"=1'-0"

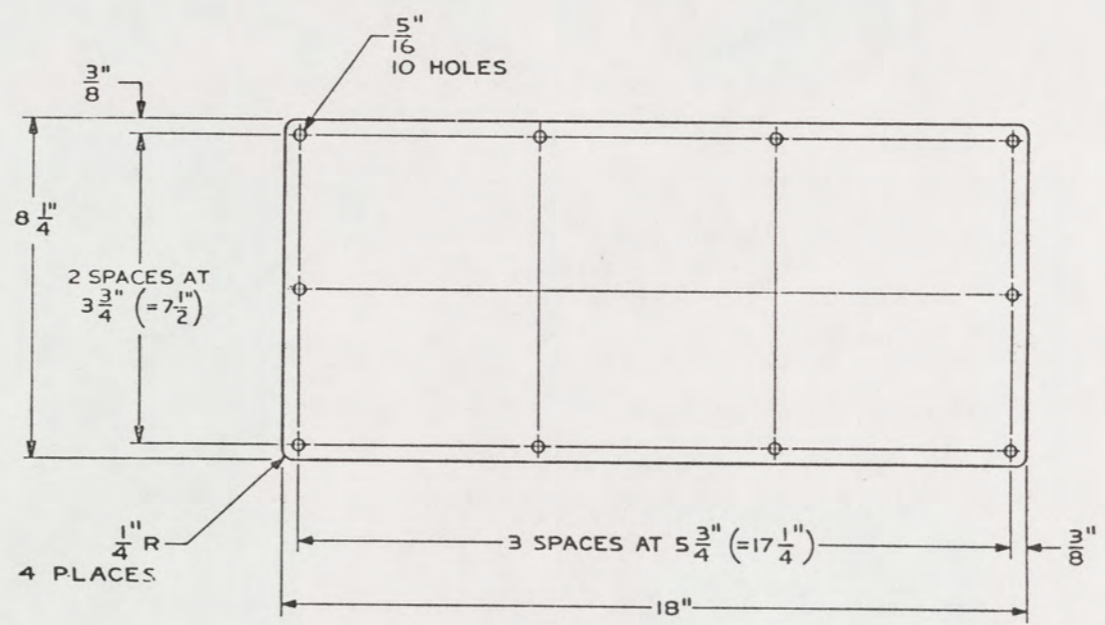
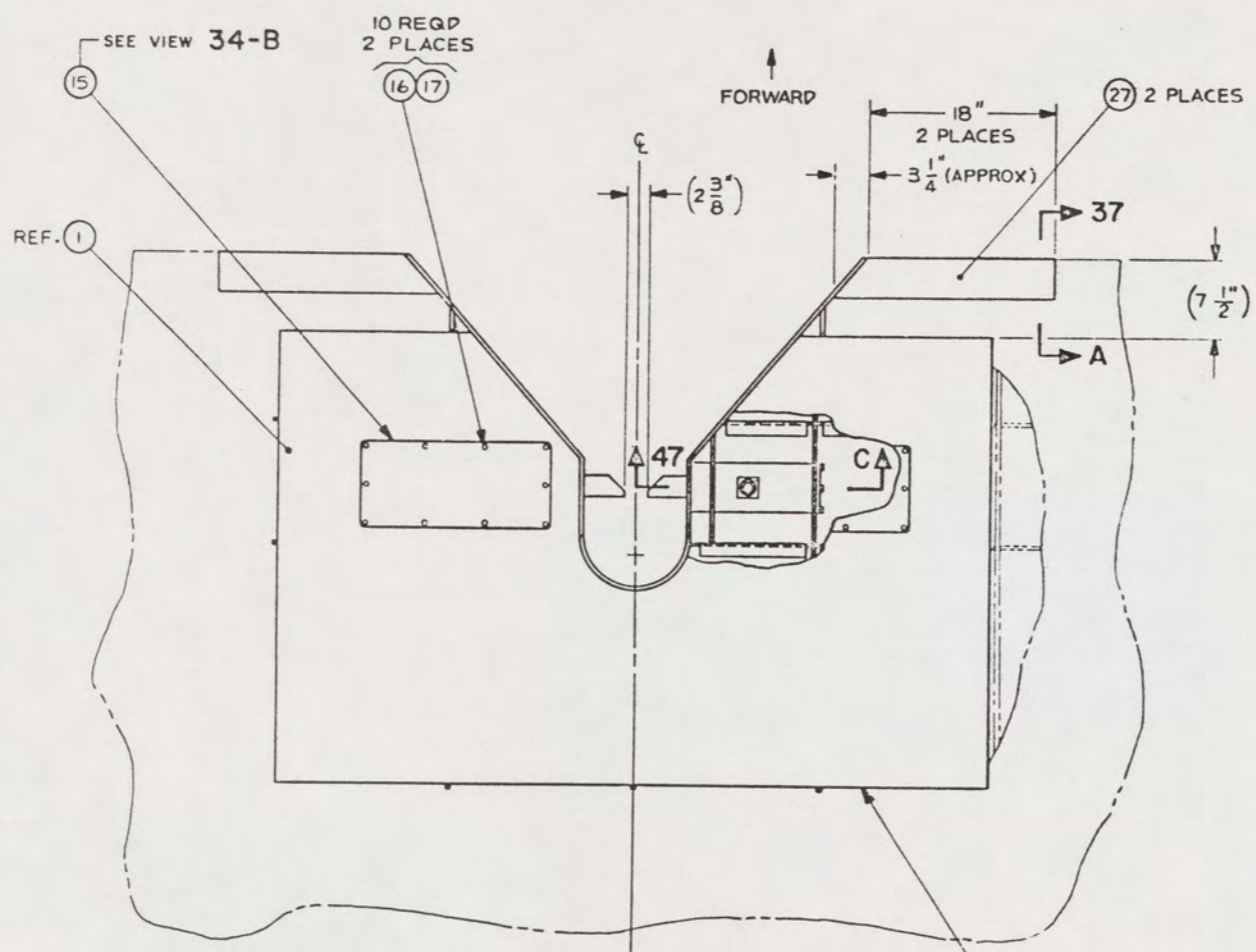
VIEW 27-A
(15-B)
SCALE 6"=1'-0"
2 PLACES
ITEMS NOT SHOWN
OMITTED FOR CLARITY

FIND NO.	CAGE	DWG SIZE	PART OR IDENTIFYING NO.	QTY REQD	NOMENCLATURE OR DESCRIPTION	SPECIFICATION	MATERIAL
UNLESS OTHERWISE SPECIFIED DIM/TOLERANCES ARE: \pm IN.							
ONE PLACE (.1)	±	DRAWN BY MTL/HA		DATE 25 NOV 87	U.S. ARMY		
TWO PLACE (.01)	±	CHECKED BY ST/PC		DATE 15 NOV 88	MELVOR RESEARCH, DEVELOPMENT, AND ENGINEERING CENTER		
THREE PLACE (.001)	±	THIRD ANGLE PROJECTION		CONTRACT NO.	FORT BELVOIR, VIRGINIA 22060-8608		
ANGLES ±	±	DO NOT SCALE THIS DRAWING		DESIGN APPROVAL	LCM-8, MOD 1, RHINO-HORN SOCKET INSTALLATION		
REMOVE BURRS AND BREAK SHARP EDGES		SHARP EDGES TO		DATE 15 NOV 88	APPROVED FOR PROCUREMENT		
FILLET RADIUS TO		DATE		DATE	SIZE A1	CAGE 97403	DWG NO. 13226E9478
MATERIAL		DATE		DATE	SCALE		

109
105

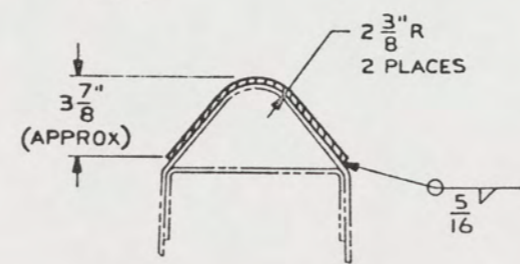


REVISIONS				
ZONE	LTR	DESCRIPTION	DATE	APPROVED



VIEW 34-B
SCALE 6"=1'-0"
TOP COVER PLATE
2 PLACES

VIEW 38-A
(S-C)
ROTATED 55° CCW



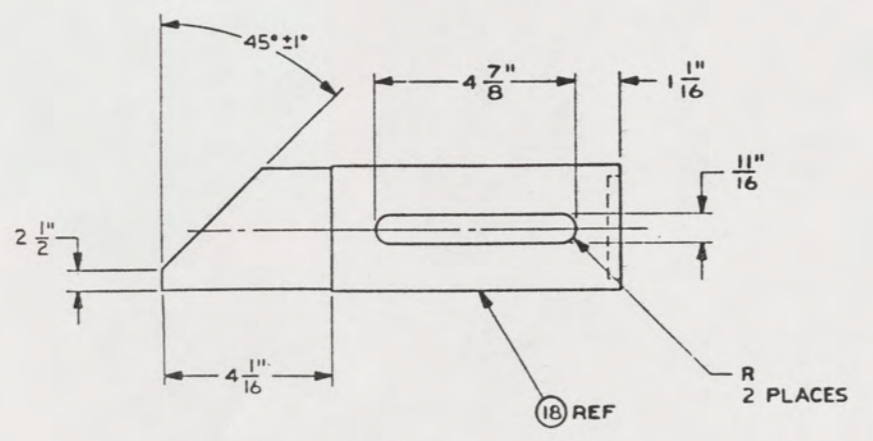
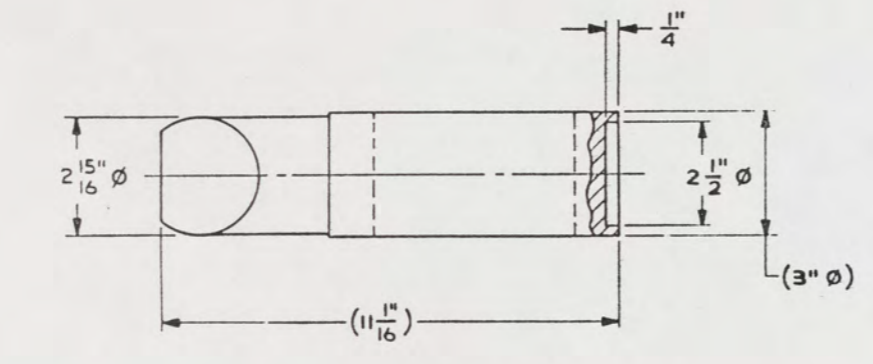
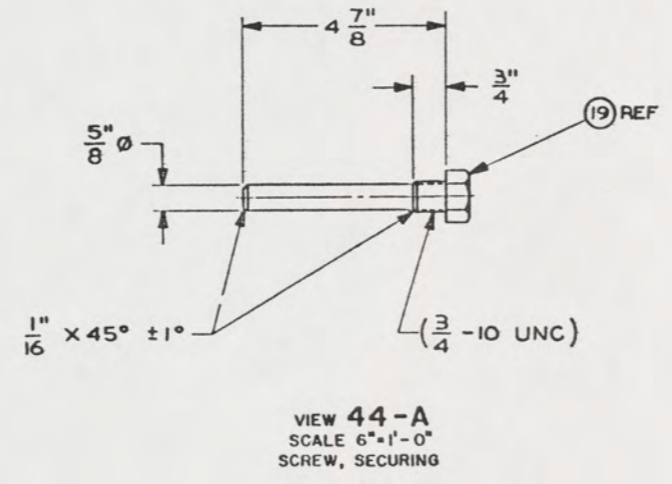
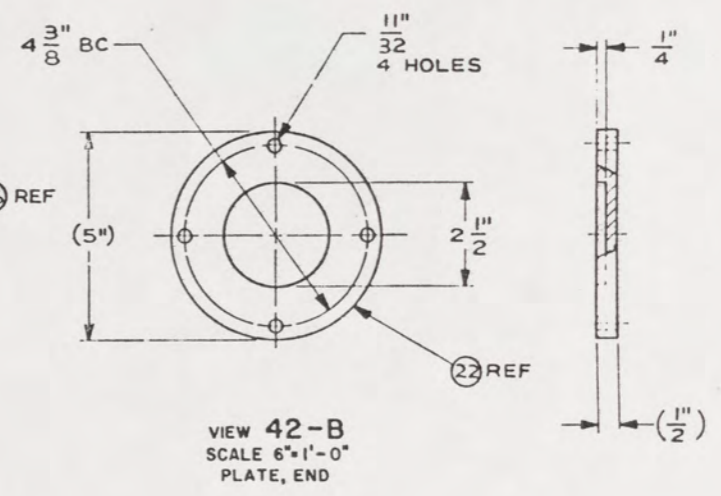
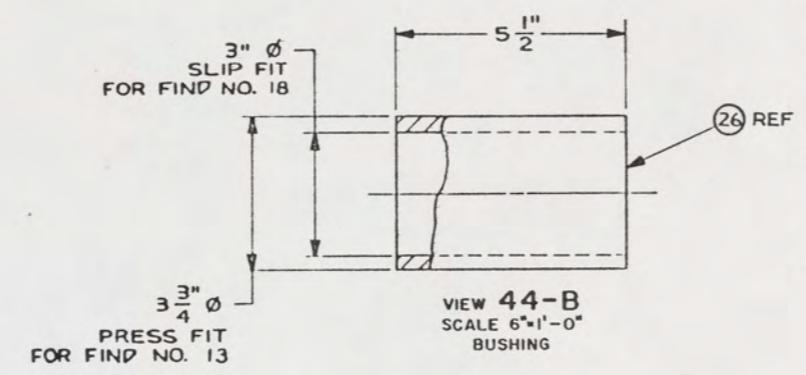
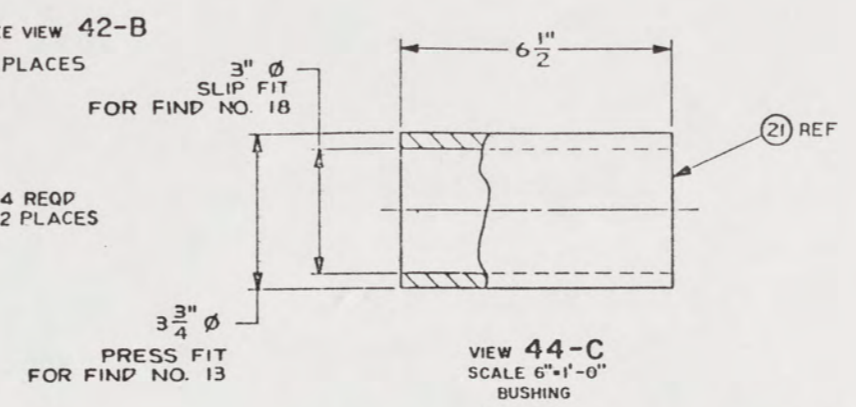
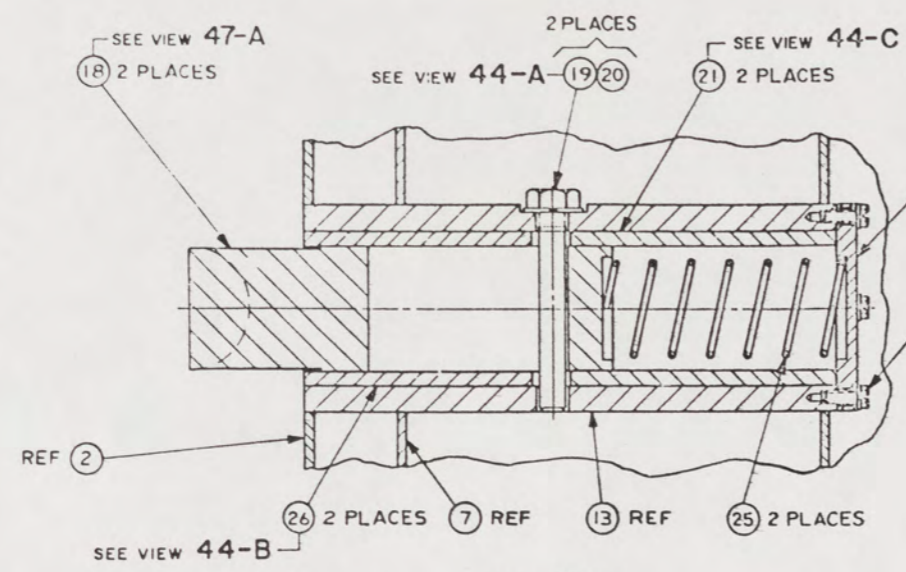
SECTION 37-A
SCALE 3"=1'-0"
2 PLACES

FIND NO.	CAGE	DWG SIZE	PART OR IDENTIFYING NO.	QTY REQD	NOMENCLATURE OR DESCRIPTION	SPECIFICATION	MATERIAL
PARTS LIST							
UNLESS OTHERWISE SPECIFIED DIM/TOLERANCES ARE: .001" IN.					DRAWN BY	DATE	
ONE PLACE (.1)					JAP/HA	25 NOV 87	
TWO PLACE (.11)					CHECKED BY	DATE	
THREE PLACE (.111)					SJC/RC	15 NOV 88	
FOUR PLACE (.1111)					CONTRACT NO.		
DO NOT SCALE THIS DRAWING					DESIGN APPROVAL		
FOR INTERPRETATION OF DRAWING BOM-STD-100 APPLIES					Date: 15 Nov 88		
REMOVE BURRS AND SHARP EDGES TO					APPROVED FOR PROCUREMENT		
BREAK SHARP EDGES FILLET RADIUS TO					Date: 15 Nov 88		
MATERIAL					SIZE	CAGE	SOC NO.
					A1	97403	13226E9478
					SCALE	SHEET 2	

106

48 47 46 45 44 43 42 41

REVISIONS				
ZONE	LTN	DESCRIPTION	DATE	APPROVED



FIND NO.	CAGE	DWG SIZE	PART OR IDENTIFYING NO.	QTY REQD	NOMENCLATURE OR DESCRIPTION	SPECIFICATION	MATERIAL
PARTS LIST							
UNLESS OTHERWISE SPECIFIED DIM/TOLERANCES ARE: \pm IN.		DRAWN BY HZG/HA		DATE 25NOV87	U.S. ARMY		
ONE PLACE (.1)		CHECKED BY CT PROB		DATE 15NOV 88	BELVOR RESEARCH, DEVELOPMENT, AND ENGINEERING CENTER		
TWO PLACE (.01)		THIRD ANGLE PROJECTION		CONTRACT NO.	FORT BELVOR, VIRGINIA 22040-5406		
THREE PLACE (.001)		DO NOT SCALE THIS DRAWING		DESIGN APPROVAL	LCM-8, MOD I, RHINO-HORN SOCKET INSTALLATION		
ANGLES		FOR INTERPRETATION OF DRAWING 900-STD-100 APPLIES		DATE 12NOV 88			
REMOVE BURRS AND BREAK SHARP EDGES		SHARP EDGES TO FILLET RADIUS		APPROVED FOR PROCUREMENT	SIZE A1	CAGE 97403	SHEET 6
MATERIAL		DATE 15 NOV 88		DATE 15 NOV 88	SCALE	SHEET 6	

48 47 46 45 44 43 42 41

107