

50

NOTES:

1. THIS DRAWING HAS BEEN DEVELOPED FROM SHIPCHECK INFORMATION FOR ACCOMPLISHING THE INSTALLATION OF MODIFIED HYDRAULIC POWER STEERING SYSTEM TO LCM-8, MOD-1.
2. ALL FABRICATION WELDING AND INSPECTION TO BE IN ACCORDANCE WITH NAVSEA 0900-LP-014-5010, WELD SIZES BASED ON USE OF AWS A5.1, CLASS E7018 ELECTRODES FOR LC STEEL TO LC STEEL.
3. EQUIPMENT AND WORKMANSHIP SHALL BE IN ACCORDANCE WITH USCG AND ABS REGULATIONS.
4. REPAIR ALL PAINT DAMAGED BY THIS INSTALLATION AND PAINT ALL NEW STEEL IN ACCORDANCE WITH U.S. ARMY TECHNICAL BULLETIN TB43-0144.
5. RESERVOIR CAPACITY: 11.8 GAL.
6. INTERNAL SURFACES OF RESERVOIR SHALL BE TREATED IN ACCORDANCE WITH MIL-P-23236, TYPE 1, CLASS 3.

REFERENCE DRAWINGS APPLICABLE TO HULL NUMBERS 8540 THRU 8560 AND 8580 THRU 8618		
NO.	DRAWING NO.	TITLE
1	13226E9461	LCM-8, MOD-1, MODIF TO HYD POWER STEERING SYSTEM

REFERENCE DRAWINGS APPLICABLE TO HULL NUMBERS 8520 THRU 8539		
NO.	DRAWING NO.	TITLE
1	13229E2251	LCM-8, MOD-1, MODIF TO HYD POWER STEERING SYSTEM

STATUS OF REVISIONS					
SH	ZONE	LTR	DESCRIPTION	DATE	APPROVED
2					

ITEM NO.	QTY	DESCRIPTION	SPECIFICATION	MATERIAL		
M-15	1	PLATE, 7.65 LB, 10 5/8 X 12 5/8	ASTM A36	STEEL		
M-14	1	PLATE, 7.65 LB, 3 1/2 X 13 5/8	ASTM A36	STEEL		
M-13	1	PLATE, 7.65 LB, 1 1/2 X 13 5/8	ASTM A36	STEEL		
M-12	23619	HA-FS-5	2	STRAINER, SUCTION-5 GPM, 3/4 IPS (HYDROGRAFT)	COML	VARIOUS
M-11	23619	HC-120	1	FILLER BREATHER-2" DIA (HYDROGRAFT)	COML	VARIOUS
M-10	4	BAR, 5/16 X 1 1/4 X 2	ASTM A36	STEEL		
M-9	84256	ATS2-420	22	INSERT, THREADED, "TRIC-NUT", 1/4-20 UNC (AVIBANK)	COML	
M-8	2	PLATE, 7.65 LB, 1 1/4 X 5 1/4	ASTM A36	STEEL		
M-7	1	SHEET, 1/8 X 6 3/4 X 13	ASTM D2000	RUBBER		
M-6	1	PLATE, 7.65 LB, 6 3/4 X 13	ASTM A36	STEEL		
M-5	2	PLATE, 7.65 LB, 13 5/8 X 13 5/8	ASTM A36	STEEL		
M-4	1	PLATE, 7.65 LB, 13 5/8 X 50 3/4	ASTM A36	STEEL		
M-3	2	PLATE, 7.65 LB, 7 1/2 X 14	ASTM A36	STEEL		
M-2	23619	HSG-88	1	GAUGE, SIGHT, TEMP AND LEVEL (HYDROGRAFT)	COML	VARIOUS
M-1	MS90725-6	22	SCREW, CAP, HEX HD, 1/4-20 UNC-2A X 3/4 LG		STEEL	
F-2		3	COUPLING, 3/4 NOM PIPE SIZE	ANSI B16.3	M. I.	
F-1	30780	3/4 DD-S	2	ELBOW, 90°, FEMALE, 3/4 IPS (PARKER)	COML	STEEL
P-2		2	PIPE, SCH 40, 3/4 IPS X 9 1/2 L	ASTM A53	STEEL	
P-1	30780	3/4 FF-S	2	NIPPLE, PIPE, 3/4 IPS (PARKER)	COML	STEEL

THIS DRAWING APPLIES  
TO HULL NUMBERS  
8520 THROUGH 8560 AND  
8580 THROUGH 8618 ONLY

PARTS LIST		NOMENCLATURE OR DESCRIPTION		SPECIFICATION	MATERIAL
UNLESS OTHERWISE SPECIFIED DIM/TOLERANCES ARE: mm IN.	DRAWN BY JK/HA	DATE 18 AUG 87	U.S. ARMY BELVOUR RESEARCH, DEVELOPMENT, AND ENGINEERING CENTER FORT BELVOUR, VIRGINIA 22060-8406		
ONE PLACE (.1) ±	CHECKED BY C.T. PROD	DATE 15 NOV 88	LCM-8, MOD-1 STEERING HYDRAULIC RESERVOIR		
TWO PLACE (.01) ±	THIRD ANGLE PROJECTION				
THREE PLACE (.001) ±	DESIGN APPROVAL	DATE 17 MAR 86	SIZE A1 SCALE NONE		
ANGLES 2	APPROVED FOR PROCUREMENT	DATE			
DO NOT SCALE THIS DRAWING	FOR INTERPRETATION OF DRAWING DIM-STR-100 APPLIES		CAGE NO. 13226E9477		
REMOVE BURRS AND BREAK SHARP EDGES	SHARP EDGES TO		SHEET 1 OF 2		
BREAK SHARP EDGES	FILLET RADIUS TO				

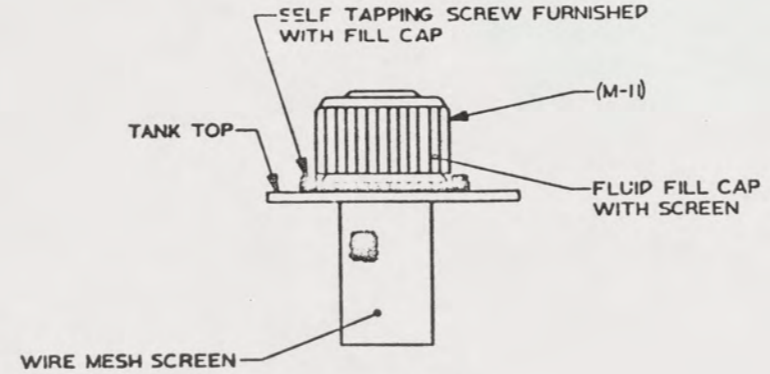
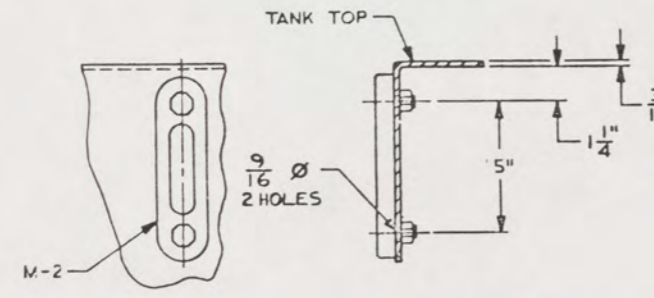
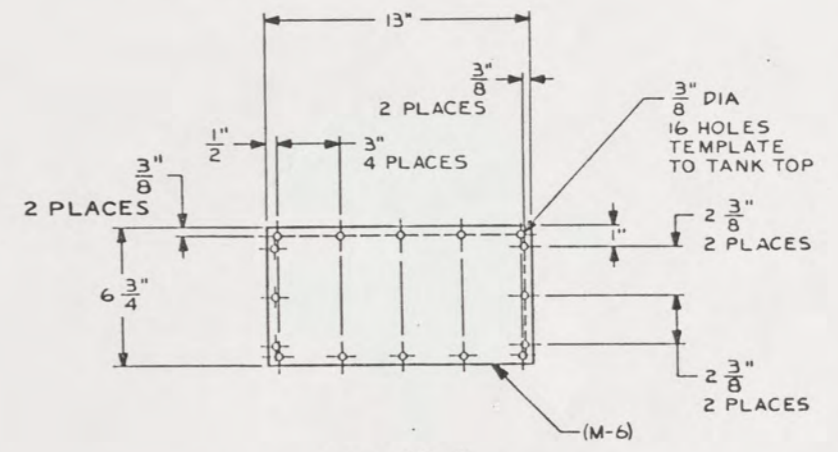
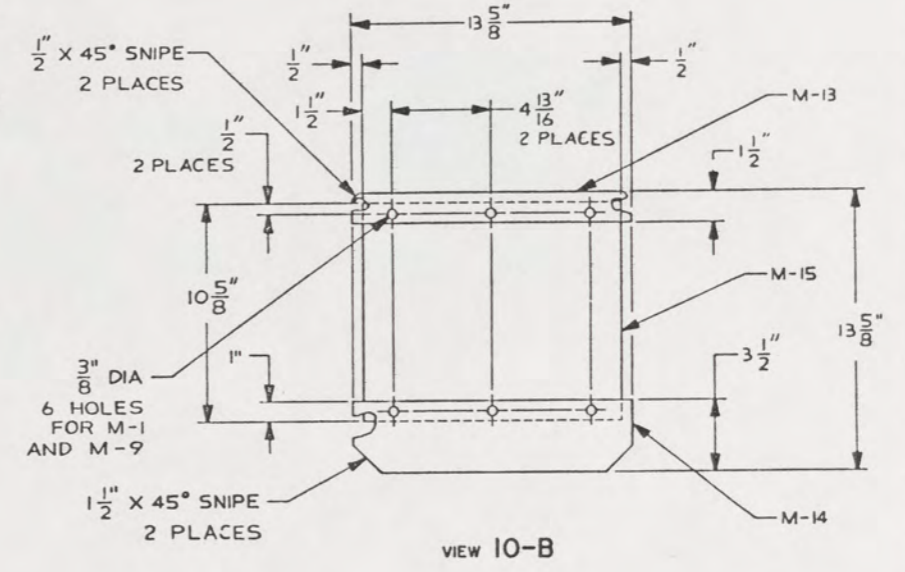
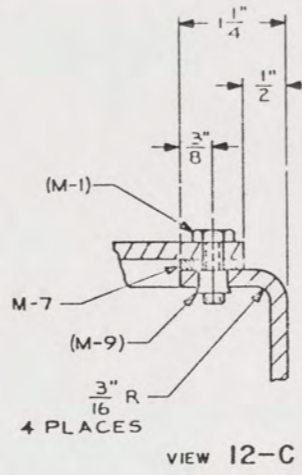
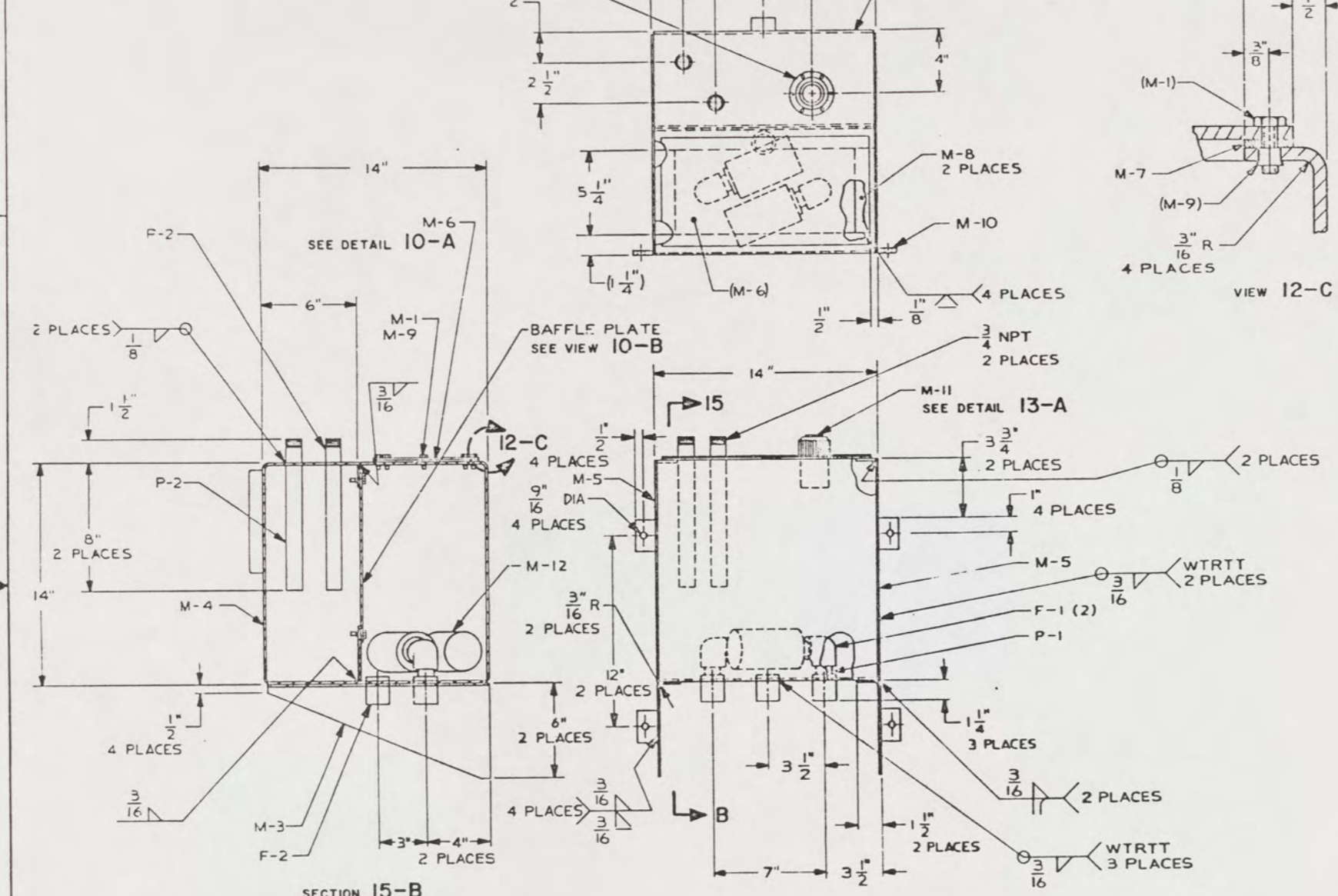
104

16 15 14 13 12 11 10 9

REV	DATE	DESCRIPTION	BY	APP'D

DRILL FOR #8-32  
SELF TAPPING SCREWS  
SUPPLIED WITH FIND NO. M-11  
6 PLACES

MOUNT GAUGE, M-2  
ON THIS SURFACE OF  
RESERVOIR.  
SEE DETAIL 15-A



DETAIL 15-A  
VIEW OF TEMPERATURE-LEVEL GAUGE CONN INTO HYDRAULIC RESERVOIR

DETAIL 13-A  
VIEW OF FILLER/BREATHER

UNLESS OTHERWISE SPECIFIED DIM/TOLERANCES ARE IN INCHES		DESIGNED BY: SLE	DATE: 7 FEB 55	U.S. ARMY MOBILITY EQUIPMENT RESEARCH AND DEVELOPMENT COMMAND FORT BELVOIR, VIRGINIA 22060	
ONE PLACE ( ) 1	TWO PLACE ( ) 2	CHECKED BY: C.V. HAD	DATE: 15 NOV 55	<b>LCM-8, MOD-1 STEERING HYDRAULIC RESERVOIR</b>	
THREE PLACE ( ) 3	FOUR PLACE ( ) 4	CONTRACT NO.	SCALE		
DO NOT SCALE THIS DRAWING		DESIGN APPROVAL: <i>Robert M. Smith</i>		SIZE: A1	CAGE: 97403
FOR INTERPRETATION BY DRAWING ROOM STD-100 APPLIES		DATE: 15 NOV 55		DRW NO: 13226E9477	SHEET: 2
REMOVE BURRS AND BREAK SHARP EDGES		APPROVED FOR PROCUREMENT: <i>James A. ...</i>			
SHARP EDGES TO		DATE: 15 NOV 55			
FINISH EDGES TO		DATE: 15 NOV 55			
MATERIAL					

101  
105

34