

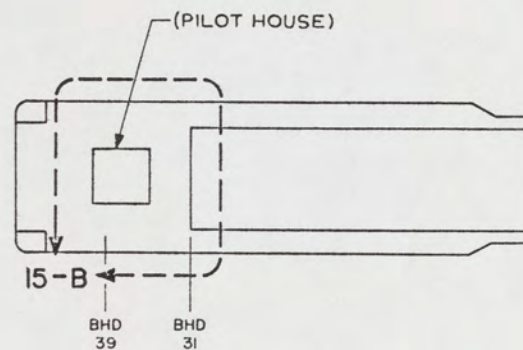
NOTES:

1. ALL FABRICATION WELDING AND INSPECTION TO BE IN ACCORDANCE WITH NAVSEA 0900-LP-014-5010.
2. TEMPLATE ALL WORK FROM LCM-8 AND EQUIPMENT.
3. EQUIPMENT AND WORKMANSHIP SHALL BE IN ACCORDANCE WITH USCG AND ABS REGULATIONS.
4. REPAIR ALL PAINT DAMAGED BY THIS INSTALLATION AND PAINT ALL NEW STEEL IN ACCORDANCE WITH U.S. ARMY TECHNICAL BULLETIN TB43-0144.
5. MATERIAL ORDERED ON THIS DRAWING IS NOT INTENDED TO BE RESTRICTIVE. SUBSTITUTION OF EQUAL QUALITY MATERIAL MAY BE MADE EXCEPT FOR ITEMS MARKED GFE.
6. SLIGHT DEVIATIONS FROM DIMENSIONS SHOWN ARE PERMISSIBLE TO SUIT ACTUAL CONDITIONS FOUND ABOARD THE VESSEL.
7. COMPONENTS SHOWN BY SOLID, HEAVY LINES ARE NEW, ORDERED AND INSTALLED IN ACCORDANCE WITH THIS DRAWING. LIGHT, BROKEN OR PHANTOM LINES INDICATE COMPONENTS EXISTING OR ORDERED ON AND INSTALLED BY DRAWINGS REFERENCED AS NOTED.
8. TEMPLATE 7 HOLES, 9/16" DIAMETER, FROM EXISTING HOLE PATTERN IN ENGINE ROOM COVER THRU FIND NO. 9, PORT AND STARBOARD. REPLACE EXISTING SCREWS WITH FIND NO. 7.
9. TEMPLATE 7 HOLES FROM TRIPOD, 9/16" DIAMETER THRU FIND NO. 9 AND ENGINE ROOM COVER.

REFERENCE DRAWINGS APPLICABLE TO HULL NUMBERS 8540 THRU 8560 AND 8580 THRU 8618		
NO.	DRAWING NO.	TITLE
1	845-4510910	LCM-8, MOD-1, GENERAL ARRANGEMENT
2	145-4510916	LCM-8, MOD-1, DECK PLATING
3	145-4510951	LCM-8, MOD-1, DETAILS, MANHOLES/HATCHES/VENTS
4	113-4661557	LCM-8, MOD-1, MACHINE GUN FNDN AND MOUNTS
5	804-5184210	LOCKER, .50 CALIBER AMMUNITION
6	804-1360106	LOCKER DETAILS

REFERENCE DRAWINGS APPLICABLE TO HULL NUMBERS 8520 THRU 8539		
NO.	DRAWING NO.	TITLE
1	845-254186	LCM-8, MOD-1, GENERAL ARRANGEMENT
2	145-254202	LCM-8, MOD-1, DECK PLATING
3	145-254205	LCM-8, MOD-1, DETAILS, MANHOLES/HATCHES/VENTS
4	113-4661557	LCM-8, MOD-1, MACHINE GUN FNDN AND MOUNTS
5	804-5184210	LOCKER, .50 CALIBER AMMUNITION
6	804-1360106	LOCKER DETAILS

STATUS OF REVISIONS					
SH	ZONE	LTR	DESCRIPTION	DATE	APPROVED
-		A	SEE ECP NO. 90HE3102 AND 90HE3103	20 MAR 79	[Signature]



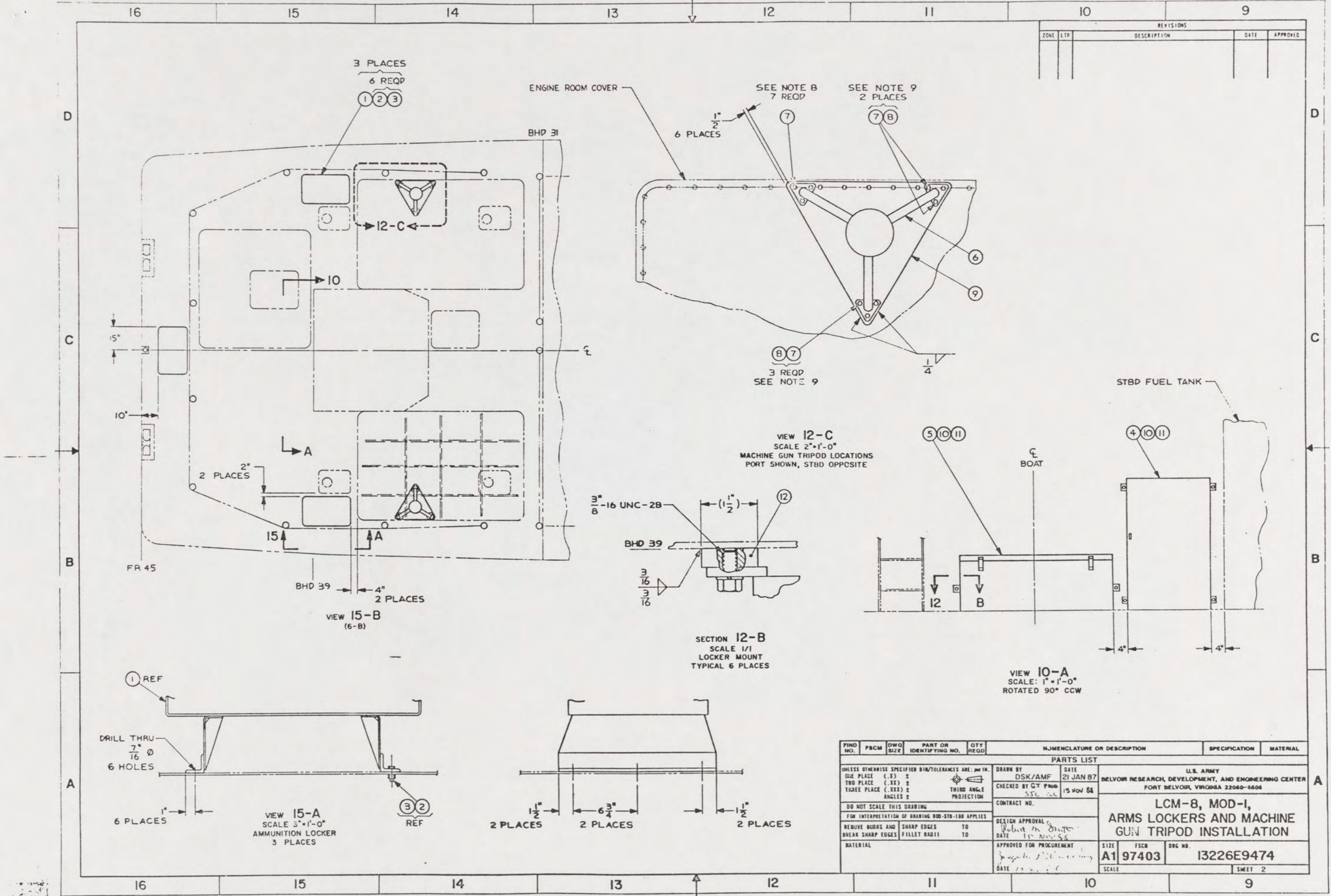
KEY PLAN 5-B  
SCALE NONE

YARD	FIND NO.	FSCM	DWG SIZE	PART OR IDENTIFYING NO.	QTY REQD	NOMENCLATURE OR DESCRIPTION	SPECIFICATION	MATERIAL
YARD 12				6	BAR, 1/2" X 1 1/2" X 2"		ASTM A36	STEEL
YARD 11				6	WASHER, LOCK, HELICAL, 3/8" NOM SIZE			CRES
YARD 10				6	SCREW, CAP, HEX HD, 3/8"-16 UNC-2A X 3/4" L			CRES
YARD 9				2	PLATE, 1/2" X 23" X 27"		ASTM B209	AL ALY
YARD 8				14	NUT, SLFLKG, HEX HD, 1/2"-13 UNC-2B			STEEL
YARD 7				28	SCREW, CAP, HEX HD, 1/2"-13 UNC-2A X 1 3/4" L			CRES
GFE 6	10001			2	GUN MOUNT, MK26, MOD 17 (NAVORD)			CRES
GFE 5	97403			1	LOCKER, CREW SERVED WEAPONS, .50 CAL M.G.			
GFE 4	97403			1	LOCKER, INDIVIDUAL ARMS, VERTICAL CABINET, M16A1/M203			
YARD 3				18	NUT, SLFLKG, HEX, GEN PURPOSE, 3/8"-16 UNC-2B			CRES
YARD 2				18	SCREW, CAP, HEX HD, 3/8"-16 UNC-2A X 1 1/4" L			CRES
GFE 1	53711			3	LOCKER, .50 CALIBER AMMUNITION (NAVSEA)			STEEL

PARTS LIST		U.S. ARMY BELVOIR RESEARCH, DEVELOPMENT, AND ENGINEERING CENTER FORT BELVOIR, VIRGINIA 22060-5606	
UNLESS OTHERWISE SPECIFIED DIM/TOLERANCES ARE: $\pm$ .001 IN. ONE PLACE (.1) $\pm$ — TWO PLACE (.XX) $\pm$ — THREE PLACE (.XXX) $\pm$ — ANGLES $\pm$ —	DRAWN BY DSK/AMF CHECKED BY G.T. P460 DATE 15 Nov 86	DATE 21 JAN 87	CONTRACT NO.
DO NOT SCALE THIS DRAWING FOR INTERPRETATION OF DRAWING 000-STD-100 APPLIES REMOVE BURRS AND SHARP EDGES — TO — BREAK SHARP EDGES FILLET RADIUS — TO —	DESIGN APPROVAL [Signature] DATE 13 MAR 87	LCM-8, MOD-1, ARMS LOCKERS AND MACHINE GUN TRIPOD INSTALLATION	
MATERIAL	APPROVED FOR PROCUREMENT [Signature] DATE 20 MAR 87	SIZE A1	FSCM 97403 DWG NO. 13226E9474 SCALE 1/2"=1'-0"
			SHEET 1 OF 2

THIS DRAWING APPLIES  
TO HULL NUMBERS  
8520 THROUGH 8560 AND  
8580 THROUGH 8618 ONLY

91



REVISIONS				
ZONE	LTR	DESCRIPTION	DATE	APPROVED

PIN	FROM	DWG	PART OR	QTY	NOMENCLATURE OR DESCRIPTION	SPECIFICATION	MATERIAL
NO.		SIZE	IDENTIFYING NO.	REQD			
PARTS LIST							
UNLESS OTHERWISE SPECIFIED DIM/TOLERANCES ARE: mm IN.				DRAWN BY DSK/AMF DATE 21 JAN 87			
ONE PLACE (.X) ±				CHECKED BY GY PROB DATE 15 NOV 86			
TWO PLACE (.XX) ±				THIRD ANGLE PROJECTION			
THREE PLACE (.XXX) ±				CONTRACT NO.			
ANGLES ±				DESIGN APPROVAL DATE 15 NOV 86			
DO NOT SCALE THIS DRAWING				APPROVED FOR PROCUREMENT DATE 15 NOV 86			
FOR INTERPRETATION OF DRAWING 800-STD-100 APPLIES				MATERIAL			
REMOVE BURRS AND BREAK SHARP EDGES				SHARP EDGES TO FILLET RADIUS			
					U.S. ARMY BELVOIR RESEARCH, DEVELOPMENT, AND ENGINEERING CENTER FORT BELVOIR, VIRGINIA 22060-5606  <b>LCM-8, MOD-1,            ARMS LOCKERS AND MACHINE            GUN TRIPOD INSTALLATION</b> SIZE A1 FSCM 97403 DDC NO. 13226E9474 SCALE SWEET 2		

92