

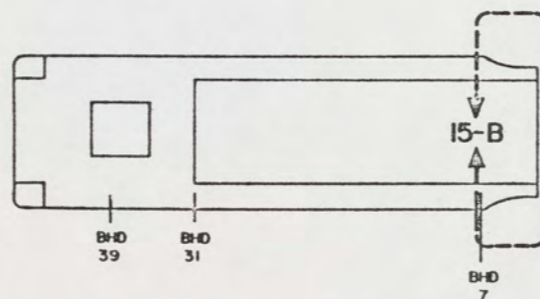
NOTES:

1. ALL FABRICATION WELDING AND INSPECTION TO BE IN ACCORDANCE WITH NAVSEA 0900-LP-014-5010, WELD SIZES BASED ON USE OF AWS A5.1, CLASS E7018 ELECTRODES FOR LC STEEL TO LC STEEL.
2. EQUIPMENT AND WORKMANSHIP SHALL BE IN ACCORDANCE WITH USCG AND ABS REGULATIONS.
3. REPAIR ALL PAINT DAMAGED BY THIS INSTALLATION AND PAINT ALL NEW STEEL IN ACCORDANCE WITH U.S. ARMY TECHNICAL BULLETIN TB43-0144.
4. SLIGHT DEVIATIONS FROM DIMENSIONS SHOWN ARE PERMISSIBLE TO SUIT ACTUAL CONDITIONS FOUND ABOARD THE VESSEL.
5. COMPONENTS SHOWN BY SOLID, HEAVY LINES ARE NEW AND ARE TO BE INSTALLED IN ACCORDANCE WITH THIS DRAWING. PHANTOM LINES INDICATE EXISTING COMPONENTS INSTALLED BY DRAWINGS REFERENCED AS NOTED.
6. SIDE GIRDER, ITEM NO. P-33 AND P-15 OF REF 1, STRINGERS 5-2 OF REF 2 AND BHD 7 SHALL BE CUT TO ALLOW FOR A FLUSH FIT OF THE EXISTING DECK PLATE AND FIND NO. 1 OF THIS DRAWING.
7. ENSURE AREA IS "GAS FREE" AND "SAFE FOR MEN TO WORK" BEFORE STARTING ANY OF THE MODIFICATIONS.

REFERENCE DRAWINGS APPLICABLE TO HULL NUMBERS 8540 THRU 8560 AND 8580 THRU 8618		
NO.	DRAWING NO.	TITLE
1	145-4510913	LCM-8, MOD-1--LONGITUDINAL TRUSSES
2	145-4510916	LCM-8, MOD-1--DECK PLATING

REFERENCE DRAWINGS APPLICABLE TO HULL NUMBERS 8520 THRU 8539		
NO.	DRAWING NO.	TITLE
1	145-2534193	LCM-8, MOD-1--LONGITUDINAL TRUSSES
2	145-2534202	LCM-8, MOD-1--DECK PLATING

SH	STATUS OF REVISIONS			DATE	APPROVED
	NO.	DESCRIPTION	BY		
2					



KEY VIEW 5-B

THIS DRAWING APPLIES TO HULL NUMBERS 8520 THROUGH 8560 AND 8580 THROUGH 8618 ONLY

YARD	NO.	QTY	DESCRIPTION	SPECIFICATION	MATERIAL
YARD 4	18		BAR, SQUARE, 3/4" X 3/4"-57" LG	ASTM A131	STEEL
YARD 3	2		ANGLE, 2 1/2" X 2 1/2" X 1/4"-48" LG	ASTM A131	STEEL
YARD 2	2		ANGLE, 2 1/2" X 2 1/2" X 1/4"-46" LG	ASTM A131	STEEL
YARD 1	2		PLATE, 20.4 LB X 57" X 84" LG	ASTM A131	STEEL

SUPPLIER PART NO. PCH QTY PART OR IDENTIFYING NO. QTY REQ.		NOMENCLATURE OR DESCRIPTION SPECIFICATION MATERIAL	
PARTS LIST			
UNLESS OTHERWISE SPECIFIED DIM TOLERANCES ARE:		DRAWN BY: SMH DATE: 18 OCT 87	
ONE PLACE (±)	±	CHECKED BY: G.T. Pelt DATE: 15 NOV 88	
TWO PLACE (±)	±	CONTRACT NO.	
THREE PLACE (±)	±	DESIGN APPROVAL: <i>John M. Dute</i> DATE: 17 NOV 88	
FOUR PLACE (±)	±	APPROVED FOR PROCUREMENT: <i>Joseph M. ...</i> DATE: 18 OCT 88	
DO NOT SCALE THIS DRAWING FOR INTERPRETATION BY DRAWINGHOOD LTD-100 APPLIES		U.S. ARMY MOBILITY EQUIPMENT RESEARCH AND DEVELOPMENT COMMAND FORT BELVOIR, VIRGINIA 22060	
SHARP EDGES AND BREAK SHARP EDGES FILLET RADIUS: TO ---		LCM-8, MOD 1, STRENGTHENING OF FORWARD DECK	
MATERIAL:		SIZE: A1	ITEM NO: 97403
		DRAW NO:	13226E9473
		SCALE: 1/10	SHEET 1 OF 2

89

