

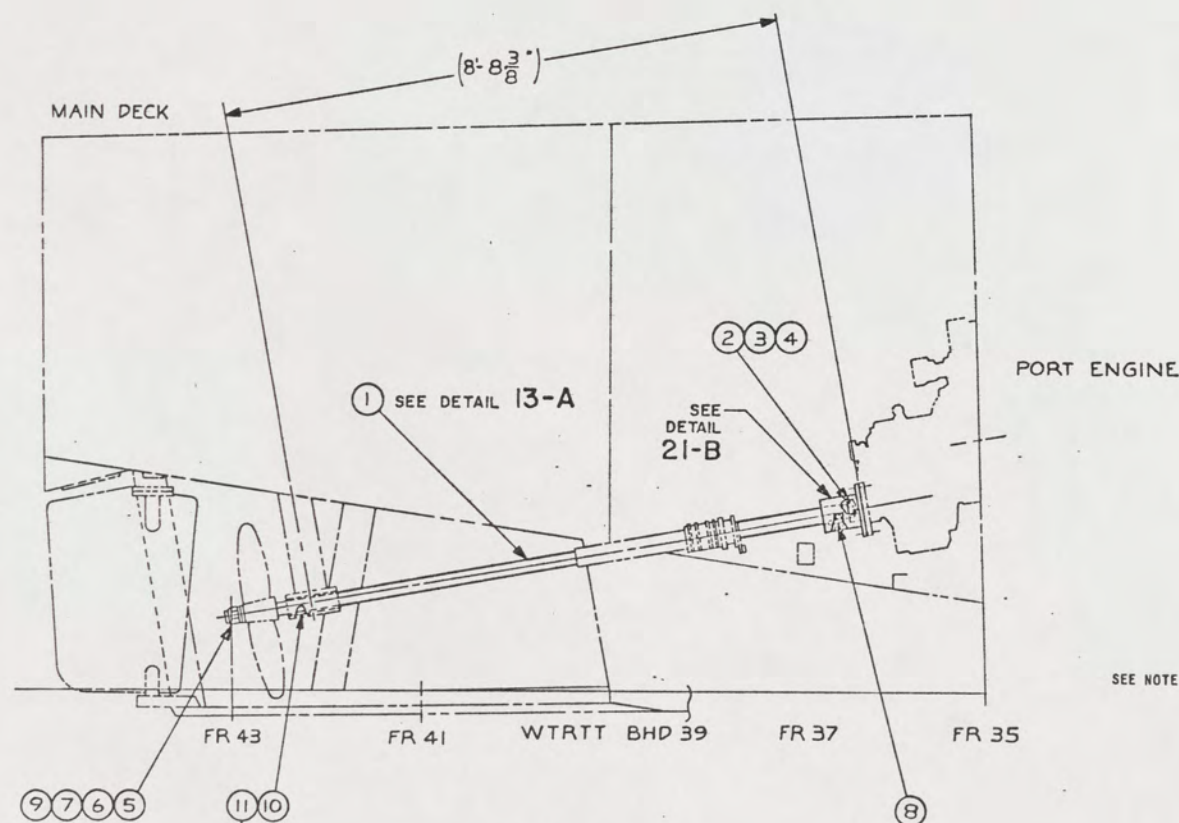
NOTES:

1. THIS DRAWING HAS BEEN DEVELOPED FROM SHIPCHECK INFORMATION FOR ACCOMPLISHING THE INSTALLATION OF PROPELLER SHAFTS AND COMPONENTS TO LCM-8, MOD-1.
2. EQUIPMENT AND WORKMANSHIP SHALL BE IN ACCORDANCE WITH USCG AND ABS REGULATIONS.
3. MATERIAL ORDERED ON THIS DRAWING IS NOT INTENDED TO BE RESTRICTIVE. SUBSTITUTION OF EQUAL QUALITY MATERIAL MAY BE MADE EXCEPT FOR ITEMS MARKED GFE.
4. SLIGHT DEVIATIONS FROM DIMENSIONS SHOWN ARE PERMISSIBLE TO SUIT ACTUAL CONDITIONS FOUND ABOARD THE VESSEL.
5. COMPONENTS SHOWN BY SOLID, HEAVY LINES ARE NEW AND ARE TO BE INSTALLED IN ACCORDANCE WITH THIS DRAWING. PHANTOM LINES INDICATE EXISTING COMPONENTS INSTALLED BY DRAWINGS REFERENCED AS NOTED.
6. PROPELLER SHAFT COUPLING PART OF ITEM NO. 1 OF REF NO. 3, SHALL BE SUPPLIED AS SHOWN IN DETAIL 21-B (EXCEPT FOR TAPERED BORE, KEYWAY AND FINISHED 4.970 DIA RECESS) AND WITH ATTACHING HARDWARE.
7. SLOTTED NUT, FIND NO. 3, SHALL BE ALTERED AS SHOWN TO THICKNESS INDICATED IN DETAIL 23-A.
8. WASHER, FIND NO. 2, SHALL BE ALTERED AS SHOWN TO OD INDICATED IN DETAIL 21-A.
9. REPLACE SETSCREWS WITH FIND NO. 11.
10. FIND NO. 2 THRU 9 TO BE SUPPLIED BY MANUFACTURER OF PROP SHAFT, FIND NO. 1.

REFERENCE DRAWINGS		
APPLICABLE TO HULL NUMBERS 8540 THRU 8560 AND 8580 THRU 8618		
NO.	DRAWING NO.	TITLE
1	243-5103226	LCM-8, MK 5, SHAFTING AND PROPELLERS ARR AND DETAILS
2	245-4510951	LCM-8 MOD-1 ARRGT/DETAILS SHAFTING PROPELLERS
3	13226E9460	LCM-8, MOD-1, SERVICE LIFE EXTENSION PROGRAM COMPONENTS KIT

REFERENCE DRAWINGS		
APPLICABLE TO HULL NUMBERS 8520 THRU 8539		
NO.	DRAWING NO.	TITLE
1	243-5103226	LCM-8, MK 5, SHAFTING AND PROPELLERS ARR AND DETAILS
2	245-2534220	LCM-8, MOD-1 ARRGT/DETAILS SHAFTING PROPELLERS
3	13229E2256	LCM-8, MOD-1 SERVICE LIFE EXTENSION PROGRAM COMPONENTS KIT

SHEETS				STATUS OF REVISIONS	
3	2	ZONE	LTR	DESCRIPTION	DATE
A	-		A	SEE ECP NO. 90HE3309 AND 90HE3310	14 APR 91 Rms

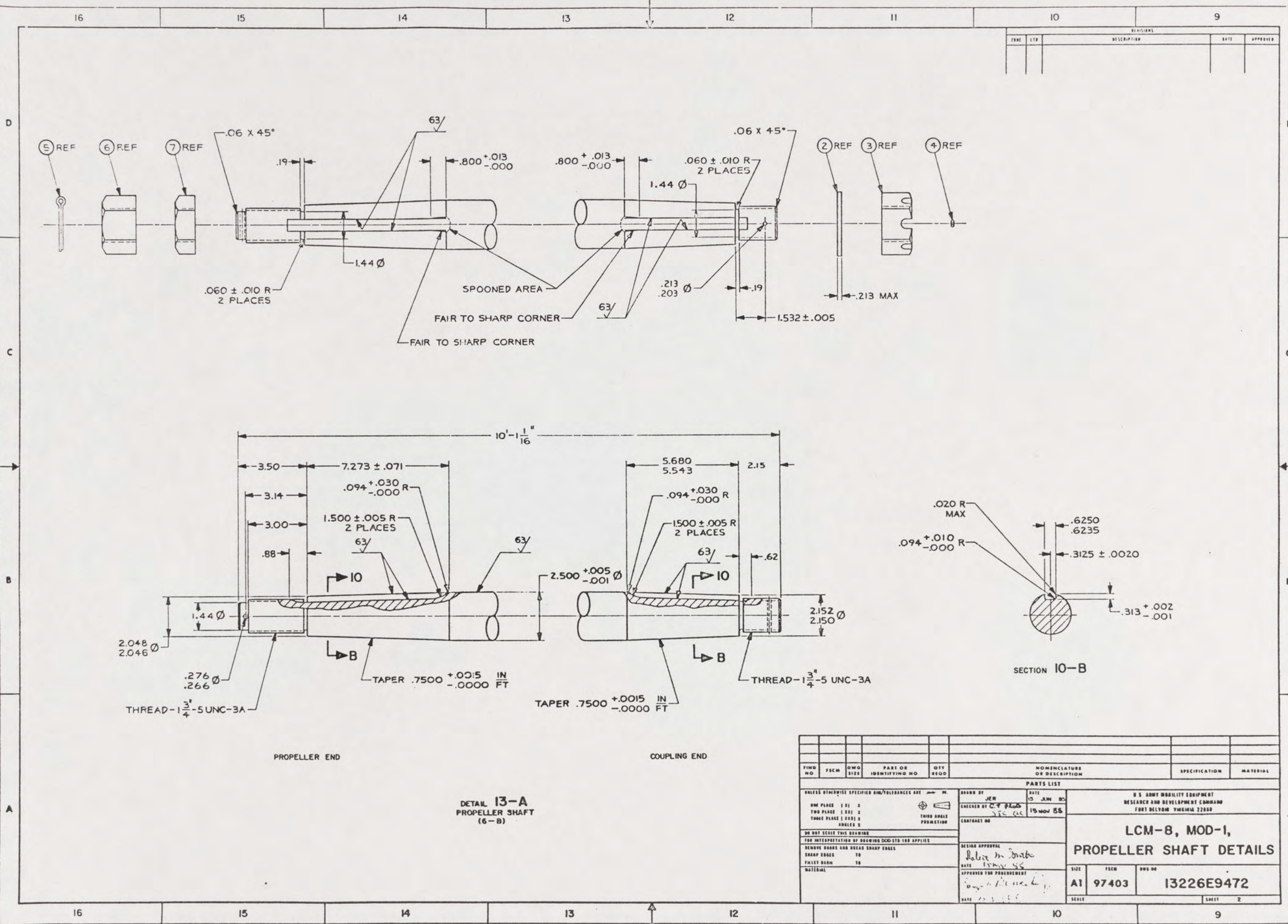


DETAIL 6-A
PORTSIDE SHOWN, STARBOARD SIMILAR
ELEVATION VIEW
SCALE 3/4" = 1'-0"

THIS DRAWING APPLIES
TO HULL NUMBERS
8520 THROUGH 8560 AND
8580 THROUGH 8618 ONLY

YARD	11		MS35307-360	8	SCREW,CAP,HEX HEAD,3/8"-16 UNC X 1" L		CRES	
GFE	10	76528	CODE NATION	2	CUTLASS BEARING,2 1/2" ID X 3 3/8" OD X 10" L (MOFFITT)	COML	BRASS/RBR	
GFE	9	9C303	14N25	2	KEY,5/8" SQ X 6" L (PRECISION BRAND)	COML	STEEL	
GFE	8	9C303	14N25	2	KEY,5/8" SQ X 4 1/2" L (PRECISION BRAND)	COML	STEEL	
GFE	7		MS35691-115	2	NUT,HEX,JAM,1 3/4-5 UNC-28,1 THK		CRES	
GFE	6			2	NUT,HEAVY,HEX,FLAT,1 3/4-5 UNC-28,1 3/4 THK	ANSI B18.2.2	CRES	
GFE	5		MS24665-641	2	PIN,COTTER,1/4 DIA X 2 1/4 L		CRES	
GFE	4		MS24665-519	2	PIN,COTTER,3/16 DIA X 2 3/4 L		CRES	
GFE	3			2	NUT,HEAVY HEX,SLOTTED,1 3/4-5 UNC-28(SEE DETAIL 23-A)	ANSI B18.2.2	CRES	
GFE	2		MS15795-832	2	WASHER,1 3/4 NOM DIA (SEE DETAIL 21-A)		CRES	
GFE	1		TYPE 630	2	BAR,ROUND,2 1/2 DIA X 10'-1 1/16" L	ASTM A504	CRES	
SUPPLIER	FIND NO.	FSCM	DWG SIZE	PART OR IDENTIFYING NO.	QTY REQD	NOMENCLATURE OR DESCRIPTION	SPECIFICATION	MATERIAL

UNLESS OTHERWISE SPECIFIED DIM/TOLERANCES ARE: $\frac{1}{16}$ IN		DRAWN BY DAM		DATE 14 JUN 85																			
ONE PLACE (1.0) \pm .03	TWO PLACE (1.00) \pm .03	THREE PLACE (1.000) \pm .03	THIRD ANGLE PROJECTION	CHECKED BY SJC QAC	DATE 15 NOV 88																		
DO NOT SCALE THIS DRAWING			DESIGN APPROVAL Robert M. Dutto																				
FOR INTERPRETATION OF DRAWING GOO STD 100 APPLIES			DATE 15 NOV 88																				
REMOVE SHARP AND BREAK SHARP EDGES			APPROVED FOR PROCUREMENT Dagoberto Alvarado																				
SHARP EDGES $\frac{1}{16}$ IN			DATE																				
FILLET RADIUS $\frac{1}{16}$ IN			DATE																				
MATERIAL			DATE																				
<table> <tr> <th colspan="3">PARTS LIST</th></tr> <tr> <td>U.S. ARMY MOBILITY EQUIPMENT RESEARCH AND DEVELOPMENT COMMAND FORT BELVOIR, VIRGINIA 22060</td><td colspan="2" rowspan="2"></td></tr> <tr> <td colspan="3">LCM-8, MOD-1, PROPELLER SHAFT DETAILS</td></tr> <tr> <td>SIZE A1</td><td>FSCM 97403</td><td>OWG NO. 13226E9472</td></tr> <tr> <td colspan="3">SCALE 1/2" = 1'-0"</td></tr> <tr> <td colspan="3">SHEET 1 OF 3</td></tr> </table>						PARTS LIST			U.S. ARMY MOBILITY EQUIPMENT RESEARCH AND DEVELOPMENT COMMAND FORT BELVOIR, VIRGINIA 22060			LCM-8, MOD-1, PROPELLER SHAFT DETAILS			SIZE A1	FSCM 97403	OWG NO. 13226E9472	SCALE 1/2" = 1'-0"			SHEET 1 OF 3		
PARTS LIST																							
U.S. ARMY MOBILITY EQUIPMENT RESEARCH AND DEVELOPMENT COMMAND FORT BELVOIR, VIRGINIA 22060																							
LCM-8, MOD-1, PROPELLER SHAFT DETAILS																							
SIZE A1	FSCM 97403	OWG NO. 13226E9472																					
SCALE 1/2" = 1'-0"																							
SHEET 1 OF 3																							

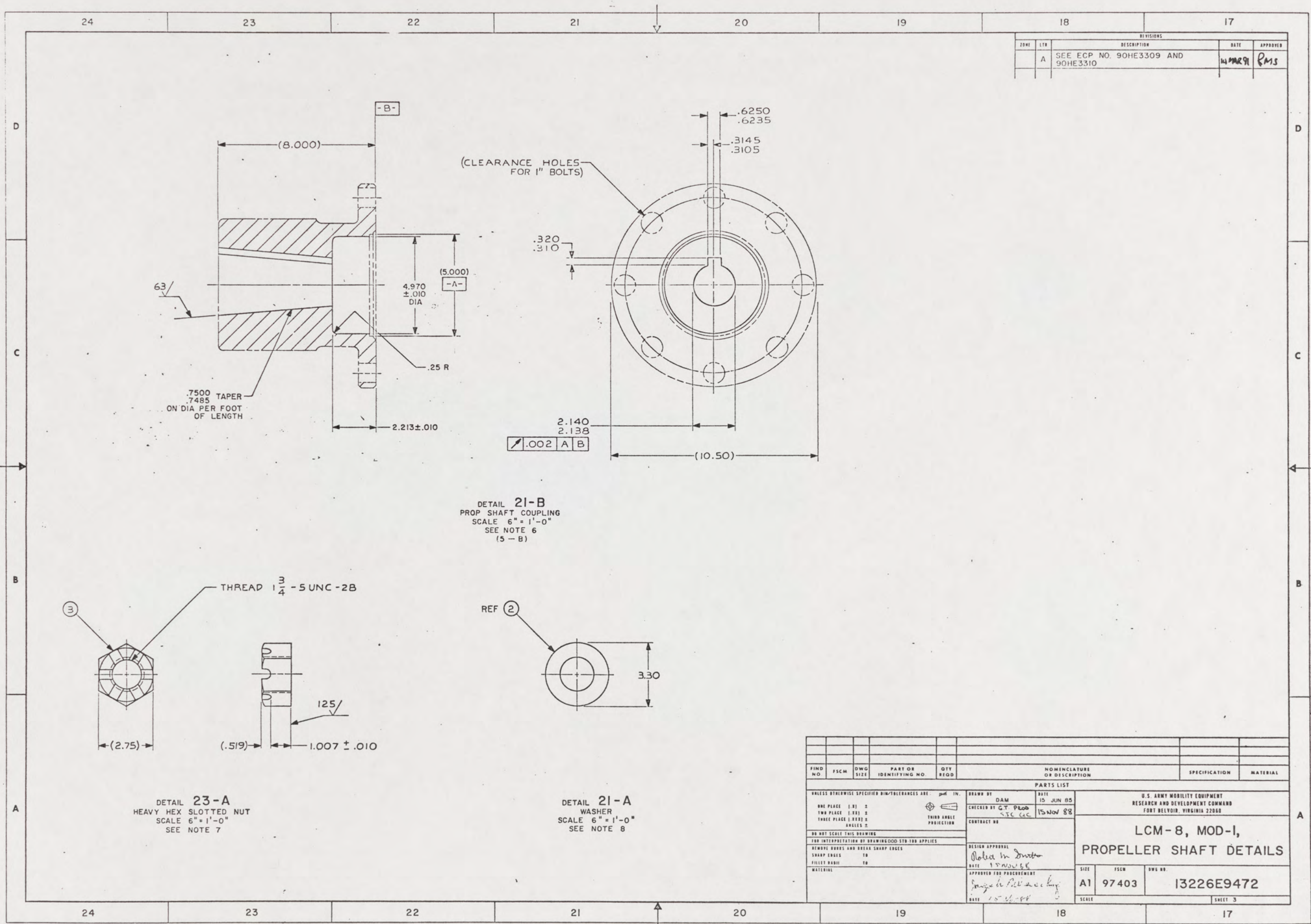


DETAIL 13-A
PROPELLER SHAFT
(6-B)

SECTION 10-B

FIND NO.		PSCH	OWD	PART OR IDENTIFYING NO.	QTY REQD	NOMENCLATURE OR DESCRIPTION	SPECIFICATION	MATERIAL
<div style="display: flex; justify-content: space-between;"> <div> <p>UNLESS OTHERWISE SPECIFIED DIM/TOLERANCES ARE IN INCHES</p> <p>ONE PLACE (1 1/2) 3</p> <p>TWO PLACE (1 1/2) 2</p> <p>THREE PLACE (1 1/2) 2</p> <p>ANGLES 2</p> <p>DO NOT SCALE THIS DRAWING</p> <p>FOR INTERPRETATION OF DRAWING DIM/STD-100 APPLIES</p> <p>REMOVE DINGS AND BREAK SHARP EDGES</p> <p>SHARP EDGES TO</p> <p>FILED EDGES TO</p> <p>MATERIAL</p> </div> <div> <p>DESIGN BY</p> <p>CHECKED BY <i>C. J. [Signature]</i></p> <p>DATE <i>15 JUN 65</i></p> <p>CONTRACT NO.</p> <p>DESIGN APPROVAL</p> <p>DATE <i>15 JUN 65</i></p> <p>APPROVED FOR PRODUCTION</p> <p>DATE <i>15 JUN 65</i></p> </div> <div> <p>U.S. ARMY MOBILITY EQUIPMENT RESEARCH AND DEVELOPMENT COMMAND FORT BELTONE, VIRGINIA 22060</p> <p>LCM-8, MOD-1, PROPELLER SHAFT DETAILS</p> <p>SIZE A1 PSCH 97403 DWS NO 13226E9472</p> <p>SCALE SHEET 2</p> </div> </div>								

87



REVISIONS				
DATE	DESCRIPTION	BY	CHKD	APP'D
14 MAR 91	SEE ECP NO. 90HE3309 AND 90HE3310	W. M. R. H.		RMS

PARTS LIST				
PART NO.	QTY	DESCRIPTION	SPECIFICATION	MATERIAL
1	1	PROP SHAFT COUPLING		
2	1	WASHER		
3	1	HEAVY HEX SLOTTED NUT		

DESIGN APPROVAL	DATE	15 JUN 85
CHECKED BY	DATE	15 NOV 88
APPROVED FOR PROCUREMENT	DATE	15 NOV 88

U.S. ARMY MOBILITY EQUIPMENT RESEARCH AND DEVELOPMENT COMMAND FORT BELVOIR, VIRGINIA 22060
LCM-8, MOD-1, PROPELLER SHAFT DETAILS
SIZE A1
SCALE