

SC

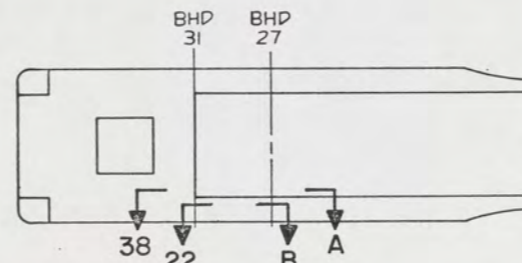
NOTES:

- THIS DRAWING HAS BEEN DEVELOPED FROM SHIPCHECK INFORMATION FOR ACCOMPLISHING THE INSTALLATION OF MARINE SANITATION DEVICE TO LCM-8, MOD-1.
- ALL FABRICATION WELDING AND INSPECTION TO BE IN ACCORDANCE WITH NAVSEA 0900-LP-014-5010, WELD SIZES BASED ON USE OF AWS A5.1, CLASS E7018 ELECTRODES FOR LC STEEL TO LC STEEL, AND LC STEEL TO CRES.
- EQUIPMENT AND WORKMANSHIP SHALL BE IN ACCORDANCE WITH USCG AND ABS REGULATIONS.
- REPAIR ALL PAINT DAMAGED BY THIS INSTALLATION AND PAINT ALL NEW STEEL IN ACCORDANCE WITH U.S. ARMY TECHNICAL BULLETIN TB43-0144.
- MATERIAL ORDERED ON THIS DRAWING IS NOT INTENDED TO BE RESTRICTIVE. SUBSTITUTION OF EQUAL QUALITY MATERIAL MAY BE MADE EXCEPT FOR ITEMS MARKED GFE.
- SLIGHT DEVIATIONS FROM DIMENSIONS SHOWN ARE PERMISSIBLE TO SUIT ACTUAL CONDITIONS FOUND ABOARD THE VESSEL.
- COMPONENTS SHOWN BY SOLID, HEAVY LINES ARE NEW AND ARE TO BE INSTALLED IN ACCORDANCE WITH THIS DRAWING. PHANTOM LINES INDICATE EXISTING COMPONENTS INSTALLED BY DRAWINGS REFERENCED AS NOTED.
- LENGTH OF SCREWS, FIND NO. M-13, SHALL BE DETERMINED UPON INSTALLATION OF SEACOCK, FIND NO. V-1. HOLES SHALL BE DRILLED AND TAPPED IN PLATE, FIND NO. M-40, USING SEACOCK, FIND NO. V-1, AS TEMPLATE.
- HOSE ASSEMBLIES, FIND NO. M-3 AND M-7, SHALL BE ADEQUATELY SECURED ALONG BULKHEADS AND AROUND SCUPPER, USING STRAPS, FIND NO. M-8 AND M-6. STRAPS SHALL BE SECURED USING WELDING BOLTS, FIND NO. M-41 AND NUTS, FIND NO. M-42, WHERE NEEDED.
- WELDS FORMING MSD COMPARTMENT SHALL BE CONTINUOUS AND WATERTIGHT.
- PIPE THREADS ON FIND NO. P-7, (1-1/2"-11 1/2 MALE NPT) SHALL BE IN ACCORDANCE WITH FED-STD-H28.
- FREEMING PORT (SCUPPER) SHALL BE RELOCATED AS SHOWN IN VIEW 38-A. FOR STARBOARD SIDE ONLY. EXISTING PORTS ON OUTER SHELL AND WING WALL SHALL BE SEALED WATERTIGHT, USING PLATES, FIND NO. M-28. (TRIM TO FIT.)
- STAINLESS STEEL BAND, FIND NO. M-15, IS SHIPPED IN 100 FT ROLLS. USE PERIMETER OF DIGESTOR TANK D-1, DIGESTOR TANK D-2 AND FILTER CANNISTER, OF FIND NO. M-10, AS GUIDE AND CUT TO FIT PER INSTRUCTIONS INCLUDED.
- CLAMP, FIND NO. M-16, IS SHIPPED IN BOXES OF A QUANTITY OF TEN. THE INSTALLATION OF MSD REQUIRES A QUANTITY OF SIX.
- WELD STUDS, FIND NO. M-19, SHALL BE LOCATED USING MARINE HEAD, FIND NO. M-9, AS TEMPLATE.
- SLOTS IN ANGLES, FIND NO. M-35, SHALL BE CUT SIMILAR TO SLOTS IN PLATE, FIND NO. M-20, OF DIGESTOR TANK STOW TABLE.
- INLET OF DIGESTOR TANK, D-1, PART OF FIND NO. M-10, IS TO BE MODIFIED BY MANUFACTURER FROM 3" DIA TO A 1-1/2" FEMALE NPT.
- WELD STUDS, FIND NO. 46, SHALL BE LOCATED USING SWITCH, FIND NO. M-47 LAMP FIXTURE, FIND NO. M-48, CABINET, FIND NO. M-51-M-53, HOLDER, M-54 AND RECEPTACLE, M-55, AS TEMPLATE.
- APPLY SLIP-RESISTANT SELF-ADHESIVE TREADS (3 TREADS) IN FRONT OF MARINE HEAD, FIND NO. M-9, AND ALONG OUTBOARD WALKWAY OF HEAD COMPARTMENT IN ACCORDANCE WITH TB 43-0144, SECTION E.
- MSD COMPONENT, FIND NO. M-10, SHALL BE PROCURED FROM:
*CONSUMAT SYSTEMS OF LOUISIANA
1174 CAMP ST
NEW ORLEANS LA 70130*
- BAR, FIND NO. M-61 MAY BE WELDED OR PRESSED INTO BAR, FIND NO. M-44.
- DIMENSIONS FOR COMPARTMENT DOOR, FIND NO. M-57, ARE FOR REFERENCE ONLY. THE DOOR SHALL EXTEND 1/4" BEYOND DOOR COAMING, FIND NO. M-39, ALL AROUND, EXCEPT AT ENGINE ROOM FLOOR AND AT HINGE SIDE. SEE (SECTION 50-C AND VIEW 55-B).
- PROVIDE STOP FOR DOOR, FIND NO. M-57, TO PREVENT DOOR FROM STRIKING ANY CO2 SYSTEM COMPONENTS WHEN IN THE OPEN POSITION.
- CHASE THE THREADS ON STEM OF STRAINER, FIND NO. M-1, TO WITHIN .25 MAX OF FLANGE FACE.

REFERENCE DRAWINGS APPLICABLE TO HULL NUMBERS 8540 THRU 8560 AND 8580 THRU 8618		
NO.	DRAWING NO.	TITLE
1	145-4510921	DETAILS, BULKHEADS AND TRANSOM
2	13226E9466	MODIFICATIONS TO RAMP HYDRAULIC SYSTEM
3	145-4510914	HULL PLATING SIDE/INBOARD LONG, BULKHEAD
4	145-4510916	DECK PLATING
5	13226E9476	LCM-8, MOD-1, POWER LIGHTING/IC SYSTEM

REFERENCE DRAWINGS APPLICABLE TO HULL NUMBERS 8520 THRU 8539		
NO.	DRAWING NO.	TITLE
1	145-2534195	DETAILS, BULKHEADS AND TRANSOM
2	13226E9466	MODIFICATIONS TO RAMP HYDRAULIC SYSTEM
3	145-2534200	HULL PLATING SIDE/INBOARD LONG, BULKHEAD
4	145-2534202	DECK PLATING
5	13226E9476	LCM-8, MOD-1, POWER LIGHTING/IC SYSTEM

SHEETS				STATUS OF REVISIONS						
7	6	5	4	3	2	ZONE	LTR	DESCRIPTION	DATE	APPROVED
A	A	A	A	A	A		A	SEE ECP NO. 90HE3102	10 MAR 80	EW S
A	A	A	A	A	B		B	SEE ECP NO. 90HE3309 AND 90HE3310	18 JUN 80	EW S



KEY VIEW
SCALE NONE

FOR CONTINUATION OF PARTS LIST SEE SHEET 2

YARD	FIND NO.	QTY	DESCRIPTION	COMPL	MATERIAL		
YARD	V-4	12168	T-433	1	VALVE, CHECK, SWING, 150 LB SWP 3/4" NPT (NIBCO)	COML	BRONZE
YARD	V-3	73124	TW10150T	1	VALVE, BALL, 3-WAY, 1-1/2" IPS (HAYWARD)	COML	PVC
YARD	V-2	17330	1-1/2-5002F-316	1	VALVE, SWING CHECK, 1/4 PSI CRACK, 1-1/2" IPS (TECHNO)	COML	CRES
YARD	V-1	46576	FIG. 805-NO.	1	BODY, SEACOCK, 3/4" IPS (PERKO)	COML	BRONZE
			5-3/4				
YARD	F-14	72423	FIG. 4401-150	1	UNION, PIPE, STD, 3/4" IPS (FLAGG)	COML	BRONZE
YARD	F-13	72423	FIG. 4171-297	1	BUSHING, PIPE, REDUCING, 1-1/2" IPS MALE TO 3/4" IPS FEMALE (FLAGG)	COML	BRONZE
YARD	F-12	72423	FIG. 4101-300	1	ELBOW, 90°, FEMALE, 1-1/2" IPS (FLAGG)	COML	BRONZE
YARD	F-11	45681	3/4 X 3/8 FG-B	2	CONNECTOR, REDUCING, 3/8 MALE IPS TO 3/4 FEMALE IPS (PARKER)	COML	BRONZE
YARD	F-10	96405	76-015-27	3	ELBOW, 90°, COMBINATION, HOSE TO MALE PIPE, 1-1/2" IPS (LASCO)	COML	PVC
YARD	F-9	96405	58-210-27	2	TEE, REDUCING, HOSE, 1-1/2" ON RUN, 3/4" ON BRANCH (LASCO)	COML	PVC
YARD	F-8	96405	76-007-27	6	ELBOW, 90°, COMBINATION, HOSE TO MALE PIPE, 3/4" IPS (LASCO)	COML	PVC
YARD	F-7	72423	FIG. 4103-300	1	ELBOW, STREET, 90°, 1-1/2" IPS (FLAGG)	COML	BRONZE
YARD	F-6	96405	12-015-27	3	ADAPTER, MALE, HOSE TO MALE PIPE, 1-1/2" IPS (LASCO)	COML	PVC
YARD	F-5	96405	14-007-27	4	ELBOW, 90°, HOSE TO HOSE, 3/4" ID HOSE (LASCO)	COML	PVC
YARD	F-4	81718	OPW 63	1	VENT, SERVICE STATION, 1-1/2" IPS (DOVER/OPW)	COML	CI
YARD	F-3	54119	0021130-015	1	TEE, 1-1/2" IPS, FEMALE (PPS)	COML	PVC
YARD	F-2	96405	14-015-27	3	ELBOW, 90°, HOSE TO HOSE, 1-1/2" ID HOSE (LASCO)	COML	PVC
YARD	F-1	46576	FIG. 63-NO.	1	ADAPTER, PIPE TO HOSE, 3/4" IPS TO 3/4" ID HOSE, 90° (PERKO)	COML	BRONZE
			5-3/4				
YARD	P-8		GR AND COND OPTL	1	TUBE, 1" OD X 1/8" WALL X 23" L	ASTM A512	STEEL
YARD	P-7		UNS C12000-061	AR	PIPE, 1-1/2" IPS, REGULAR	ASTM B42	CU ALY
YARD	P-6		MS20913-12	1	PLUG, PIPE, 1-1/2 IPS		STEEL
YARD	P-5	27901	27085	1	NIPPLE, CLOSE, 1-1/2" IPS (USPC)		PVC
YARD	P-4		MSS1953-111	1	NIPPLE, PIPE, LONG, 3/4" IPS X 8" LG		STEEL
YARD	P-3		MSS1953-97	2	NIPPLE, CLOSE, 3/4" IPS		STEEL
YARD	P-2		MSS1953-171	2	NIPPLE, PIPE, SHORT, 1-1/2" IPS X 2-1/2" LG		STEEL
YARD	P-1		MS39233-8	1	COUPLING, PIPE, 1-1/2" IPS		NI

PARTS LIST			
UNLESS OTHERWISE SPECIFIED DIM/TOLERANCES ARE: $\pm .001$ IN.	DRAWN BY	DATE	U.S. ARMY
ONE PLACE (.1) \pm	LG/MTJ	30SEP88	BELVOIR RESEARCH, DEVELOPMENT, AND ENGINEERING CENTER
TWO PLACE (.1X) \pm	CHECKED BY	GT P&D	FORT BELVOIR, VIRGINIA 22060-5606
THREE PLACE (.1XX) \pm	DATE	15 NOV 88	
ANGLES \pm	CONTRACT NO.		
DO NOT SCALE THIS DRAWING	DESIGN APPROVAL		
FOR INTERPRETATION OF DRAWING QDD-STD-100 APPLIES	REMOVE BURRS AND SHARP EDGES --- TO ---		
	BREAK SHARP EDGES FILLET RADI --- TO ---		
MATERIAL	APPROVED FOR PROCUREMENT	DATE	
	DATE	15 NOV 88	
	SIZE	A1	
	CAGE	97403	
	DWG NO.	13226E9468	
	SCALE	1-1/2" = 1'-0"	
	SHEET	1 OF 7	

69

16 15 14 13 12 11 10 9

REVISIONS				
ZONE	LTR	DESCRIPTION	DATE	APPROVED
A		THIS SHEET ADDED. SEE ECP NO. 90HE3102	20 MAR 88	[Signature]
B		SEE ECP NO. 90HE3309 AND 90HE3310	10 MAR 91	[Signature]

YARD	M-63			3	PLATE, 3/16" X 2" X 4-1/4" LG	ASTM A36	STEEL	
YARD	M-62			6	PLATE, 3/16" X 1-1/32" X 2"	ASTM A36	STEEL	
YARD	M-61		TYPE 304	1	BAR, ROUND, 3/8" DIA STK X 2 3/4" LG	ASTM A276	CRES	
YARD	M-60	39428	1494A12	3	HINGE, FULL MORTISE, 4" X 4" (MCMASTER-CARR)	COML	STEEL	
YARD	M-59		MS27183-9	24	WASHER, FLAT, ROUND, GEN PURPOSE, 1/4" NOM SIZE		STEEL	
YARD	M-58		MS35190-291	24	SCREW, MACH, FLT CSK HD, CROSS-RECESSED, 1/4-20 UNC-2B X 1" LG		STEEL	
YARD	M-57		6061-T6	1	PLATE, 5/16" X 30" X 68"	ASTM B209	AL ALY	
YARD	M-56							
YARD	M-55	39428	NO. 3027K12	1	RECEPTACLE, DISPOSABLE LINER, 11" H X 8" W X 4 1/4" D (MCMASTER-CARR)	COML	CRES	
YARD	M-54	39428	NO. 3009K5	1	HOLDER, PAPER TOWEL, 7 1/4" H X 12 1/8" W X 6 1/8" D (MCMASTER-CARR)	COML	CRES	
YARD	M-53	4Y520	PT NO. 10052009	1 SET	EXTERNAL WALL MTG BRACKETS (SET OF 4) (ROSE)	COML	STEEL	
YARD	M-52	4Y520	PT NO. 21610001	2	DOOR HANDLE (ROSE)	COML	PLASTIC	
YARD	M-51	4Y520	PT NO. 21304000	1	CABINET, WATERTIGHT, 15.74" H X 11.81" W X 7.87" D (ROSE)	COML	FIBERGLASS	
YARD	M-50		M19622/4-01	1	STUFFING TUBE, "Y" TYPE, WITH PACKING ASSY IC	MIL-S-19622/4	NYLON	
YARD	M-49		M19622/3-001	4	STUFFING TUBE, STRAIGHT, WITH PACKING ASSY IC, 1/2" NPT	MIL-S-19622/3	NYLON	
YARD	M-48	78011	LVJB106	1	FIXTURE, INCANDESCENT LAMP, WATERPROOF, 100 W (RUSSELL-STOLL)	COML	BRASS	
YARD	M-47	78011	1493N	2	SWITCH, ROTARY, 10 A, DOUBLE POLE (RUSSELL STOLL)	COML	BRASS	
YARD	M-46	54553	TYPE CD, 1/4-20	12	STUD, WELD, 1/4-20 UNC X 3/4" LG, SMALL FLANGE (ERICO JONES)	COML	CRES	
YARD	M-45	39428	2376K2	1	TOILET ROLL HOLDER (MCMASTER-CARR)	COML	CRES	
YARD	M-44		TYPE 304	1	BAR, ROUND, 1/2" DIA STK X 5-1/4" L	ASTM A276	CRES	
YARD	M-43			1	ANGLE, 2" X 1-1/2" X 3/16" X 5'-1" LG	ASTM A36	STEEL	
YARD	M-42		MS35649-282	AR	NUT, PLAIN, HEX, NO. 8 (.164)-32 UNC		STEEL	
YARD	M-41		MS1934-8	AR	BOLT, WELDING, NO. 8 (.164)-32 UNC X 1/2" LG		STEEL	
YARD	M-40			1	PLATE, 3/4" X 3" OD	ASTM A36	STEEL	
YARD	M-39			1	FB, 1/4" X 2" X 14'-5"	ASTM A36	STEEL	
YARD	M-38		ALY 6061-T6	2	PLATE OR BAR, 1/2" X 3/4" X 1"	ASTM B221	AL ALY	
YARD	M-37		MS35333-39	4	WASHER, LOCK, FLAT, INTERNAL TOOTH, NO. 10		STEEL	
SUPPLIER	FIND NO.	CAGE	DWG SIZE	PART IDENTIFYING NO.	QTY REQD	NOMENCLATURE OR DESCRIPTION	SPECIFICATION	MATERIAL

YARD	M-36			MS35207-261	4	SCREW, MACHINE-PAN HD, CROSS-RECESSED, NO. 10-32 UNF X .38" L		STEEL
YARD	M-35				2	ANGLE, 3" X 2" X 3/16" X 6" LG	ASTM A36	STEEL
YARD	M-34				2	ANGLE, 2" X 2" X 3/16" X 2" LG	ASTM A36	STEEL
YARD	M-33			6061-T6	2	BAR, ROUND, 1/2" STK X 10 1/2" L (APPROX)	ASTM B211	AL ALY
YARD	M-32				2	ANGLE, 1 1/2" X 1 1/2" X 3/16" X 1'-3 1/2" LG	ASTM A36	STEEL
YARD	M-31				2	FB, 3/16" X 2" X 2'-2" LG	ASTM A36	STEEL
YARD	M-30				1	FB, 3/16" X 2" X 2'-3" LG	ASTM A36	STEEL
YARD	M-29				9	ANGLE, 2" X 2" X 3/16" X 3'-6" LG	ASTM A36	STEEL
YARD	M-28				2	PLATE, 3/16" X 8 7/8" X 1'-3" LG SEE NOTE 12	ASTM A36	STEEL
YARD	M-27				1	PLATE, 3/16" X 2'-6 1/2" X 6'-0" LG	ASTM A36	STEEL
YARD	M-26				1	PLATE, 3/16" X 3'-9 1/4" X 6'-0" LG	ASTM A36	STEEL
YARD	M-25				2	FB, 3/16" X 2" X 1'-7 1/2" LG	ASTM A36	STEEL
YARD	M-24			MS35338-139	36	WASHER, LOCK-SPRING, HELICAL, 1/4" NOM DIA		CRES
YARD	M-23			MS51971-1	36	NUT, HEX, PLAIN, 1/4-20 UNC-2B		CRES
YARD	M-22	71177		600-G	1	FLANGE, TANK-THRU HULL, 1-1/2" IPS (BUCKEYE)	COML	STEEL
YARD	M-21	71177		600-D	1	FLANGE, TANK-THRU HULL, 3/4" IPS (BUCKEYE)	COML	STEEL
YARD	M-20				2	FB, 3/16" X 4" X 6" LG	ASTM A36	STEEL
YARD	M-19	54553		TYPE CD, SF	4	STUD, WELD, 5/16-18 UNC X 1", LG, SMALL FLANGE, (ERICO JONES)	COML	CRES
YARD	M-18				2	ANGLE, 1-1/2" X 1-1/2" X 3/16" X 10" LG	ASTM A36	STEEL
YARD	M-17	70847		C724	1 BOX	BUCKLE, "SCRU-LOKT"-1/2" (HOUDAILLE)	COML	CRES
YARD	M-16	70847		M311	1 BOX	CLAMP, ROLL-BAND TYPE, "SCRU-SEAL" (HOUDAILLE)- (SEE NOTE 15)	COML	CRES
YARD	M-15	70847		C134	1 BOX	BAND, STNLS STL, "BAND-IT", -1/2" (HOUDAILLE) - (SEE NOTE 14)	COML	CRES
YARD	M-14			MS51922-9	4	NUT, HEX, PREVAILING TORQUE, 5/16-18 UNC		STEEL
YARD	M-13			MS51849-68	4	SCREW, MACH, HEX HD, NO. 10 (.190)-32 UNF X 1" L SEE NOTE 8		STEEL
YARD	M-12			MS35338-43	4	WASHER, LOCK-SPRING, NO. 10 (.190) NOM SZ SEE NOTE 8		STEEL
YARD	M-11				1	PLATE, 1/2" X 3" X 4" LG	ASTM A36	STEEL
GFE	M-10			TYPE II, MOD 10	1	SANITATION SYSTEM, MARINE (HUMPHREY)	COML	SEE NOTE 17 AND 20
GFE	M-9	79577		1550-C	1	HEAD, MARINE, "SEACLO" (WILCOX-CRITTENDEN)	COML	
YARD	M-8			MS21314-9	AR	STRAP, RETAINING, FOR CABLE, 1-1/16 OD		STEEL
YARD	M-7	24161		75W	9	HOSE, WATER DISCHARGE, 1-1/2" ID (GATES)	COML	RUBBER
YARD	M-6			MS35338-45	4	WASHER, LOCK-SPRING, HELICAL, 5/16" NOM DIA		
YARD	M-5			MS35842-12	36	CLAMP, HOSE, LOW PRESSURE, TYPE "F" (1-1/2" ID HOSE)		CRES
YARD	M-4			MS35842-11	32	CLAMP, HOSE, LOW PRESSURE, TYPE "F", (3/4" ID HOSE)		CRES
YARD	M-3	24161		75W	8	HOSE, WATER DISCHARGE, 3/4" ID (GATES)	COML	RUBBER
YARD	M-2			M1BC510	1	GASKET, 2 1/2" OD X 1 1/16" ID X 1/8" STK	ASTM D2000	RUBBER
YARD	M-1	79577		8577-3/4	1	INTAKE STRAINER (WILCOX CRITTENDEN) SEE NOTE 24	COML	BRONZE
						PIPE		
SUPPLIER	FIND NO.	CAGE	DWG SIZE	PART OR IDENTIFYING NO.	QTY REQD	NOMENCLATURE OR DESCRIPTION	SPECIFICATION	MATERIAL

UNLESS OTHERWISE SPECIFIED DIM/TOLERANCES ARE: \pm .015 IN.

ONE PLACE (.1) \pm .005 IN.
TWO PLACE (.XX) \pm .001 IN.
THREE PLACE (.XXX) \pm .0005 IN.
ANGLES \pm .005 IN.

DRAWN BY LG/MTJ DATE 30 OCT 88
CHECKED BY GT PRD DATE 15 NOV 88
THIRD ANGLE PROJECTION

CONTRACT NO.

DESIGN APPROVAL [Signature] DATE 15 NOV 88
APPROVED FOR PROCUREMENT [Signature] DATE 15 NOV 88

REMOVE BURRS AND BREAK SHARP EDGES TO SHARP EDGES TO FILLET RADIUS TO

MATERIAL

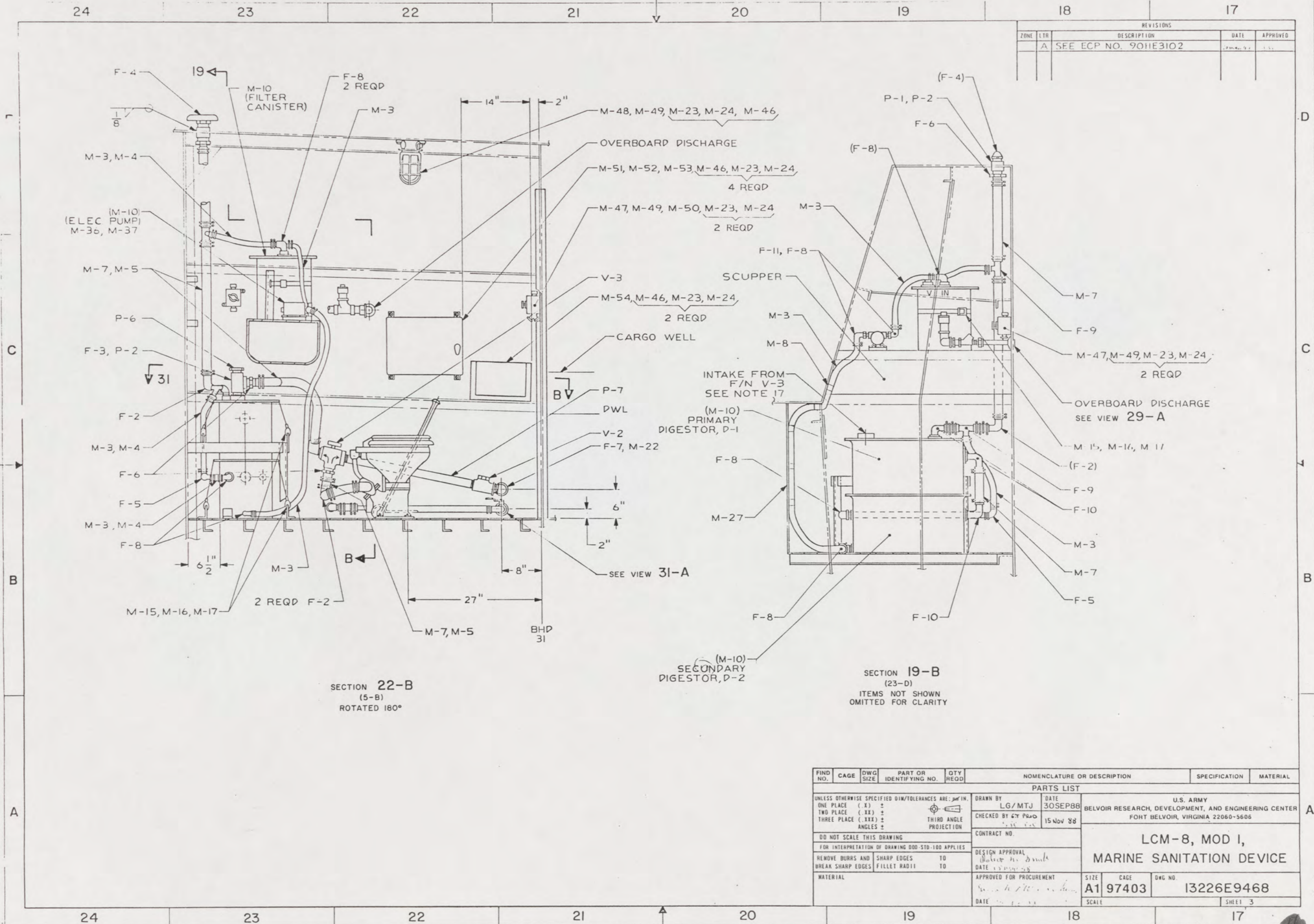
U.S. ARMY
BELVOIR RESEARCH, DEVELOPMENT, AND ENGINEERING CENTER
FORT BELVOIR, VIRGINIA 22060-5608

LCM-8, MOD I,
MARINE SANITATION DEVICE

SIZE A1 CAGE 97403 DWG NO. I3226E9468
SCALE SHEET 2

70

16 15 14 13 12 11 10 9



REVISIONS				
ZONE	LTR	DESCRIPTION	DATE	APPROVED
A		SEE ECP NO. 9011E3102		

SECTION 22-B
(5-B)
ROTATED 180°

(M-10)
SECONDARY
DIGESTOR, D-2

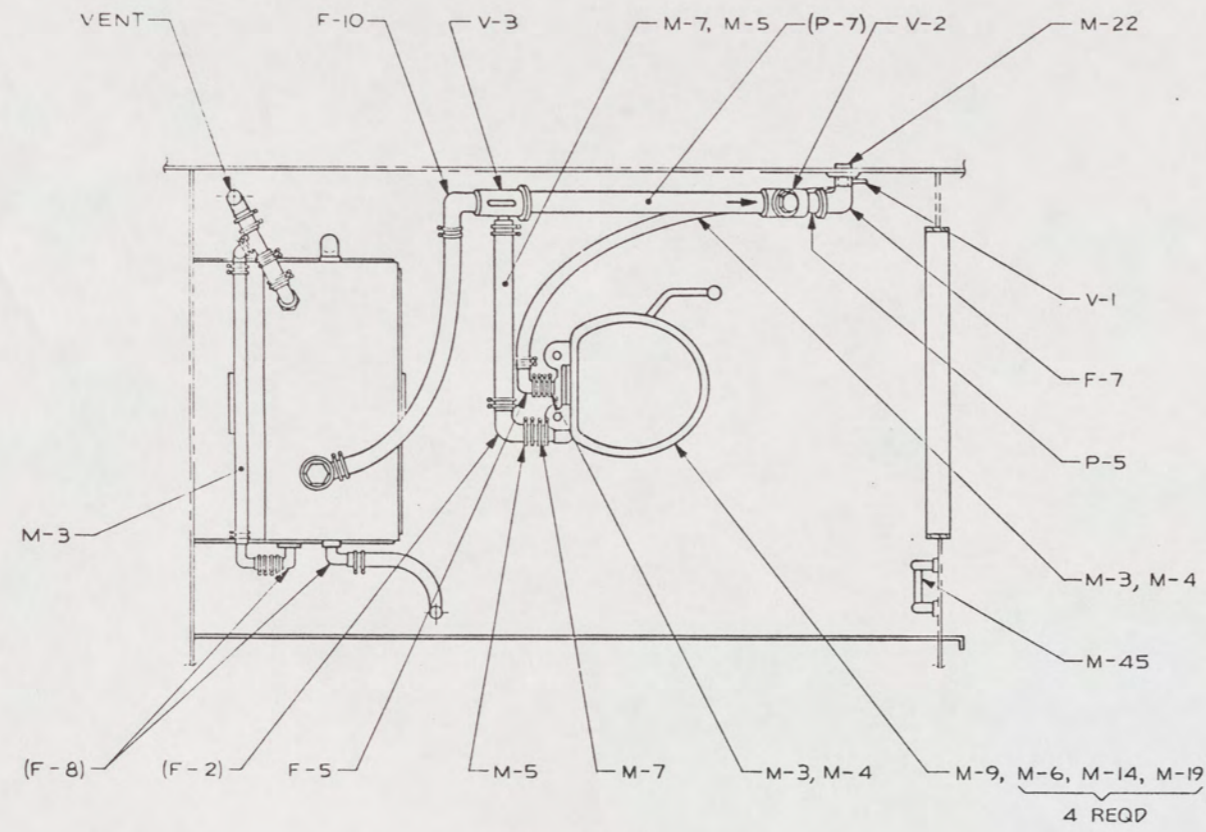
SECTION 19-B
(23-D)
ITEMS NOT SHOWN
OMITTED FOR CLARITY

FIND NO.	CAGE	DWG SIZE	PART OR IDENTIFYING NO.	QTY REQD	NOMENCLATURE OR DESCRIPTION	SPECIFICATION	MATERIAL
PARTS LIST							
UNLESS OTHERWISE SPECIFIED DIM/TOLERANCES ARE:		DRAWN BY		DATE		U.S. ARMY	
ONE PLACE (.X) ±		LG/MTJ		30SEP88		BELVOIR RESEARCH, DEVELOPMENT, AND ENGINEERING CENTER	
TWO PLACE (.XX) ±		CHECKED BY		15 NOV 88		FORT BELVOIR, VIRGINIA 22060-5606	
THREE PLACE (.XXX) ±		THIRD ANGLE PROJECTION		CONTRACT NO.		LCM-8, MOD I, MARINE SANITATION DEVICE	
DO NOT SCALE THIS DRAWING		DESIGN APPROVAL		APPROVED FOR PROCUREMENT			
FOR INTERPRETATION OF DRAWING GO TO STD-100 APPLIES		REMOVE BURRS AND SHARP EDGES TO		DATE			
BREAK SHARP EDGES TO		SHARP EDGES TO		DATE			
MATERIAL		DATE		DATE		SIZE: A1 CAGE: 97403 DWG NO: 13226E9468 SCALE: SHEET 3	

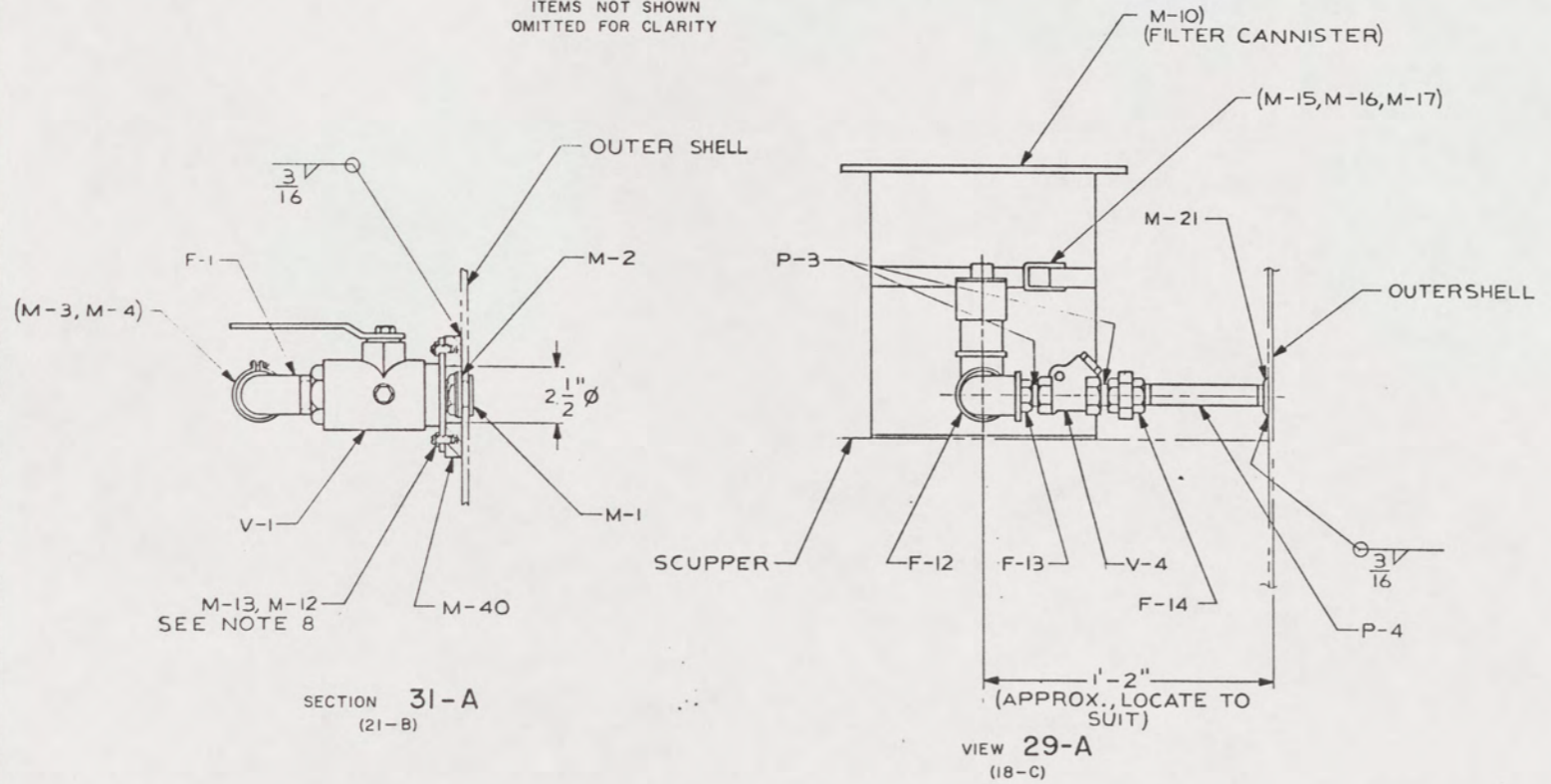
71

32 31 30 29 28 27 26 25

REVISIONS				
ZONE	LTR	DESCRIPTION	DATE	APPROVED
	A	SEE ECP NO. 90HE3102		



SECTION 31-B
(24-C)
ITEMS NOT SHOWN
OMITTED FOR CLARITY



SECTION 31-A
(21-B)

VIEW 29-A
(18-C)

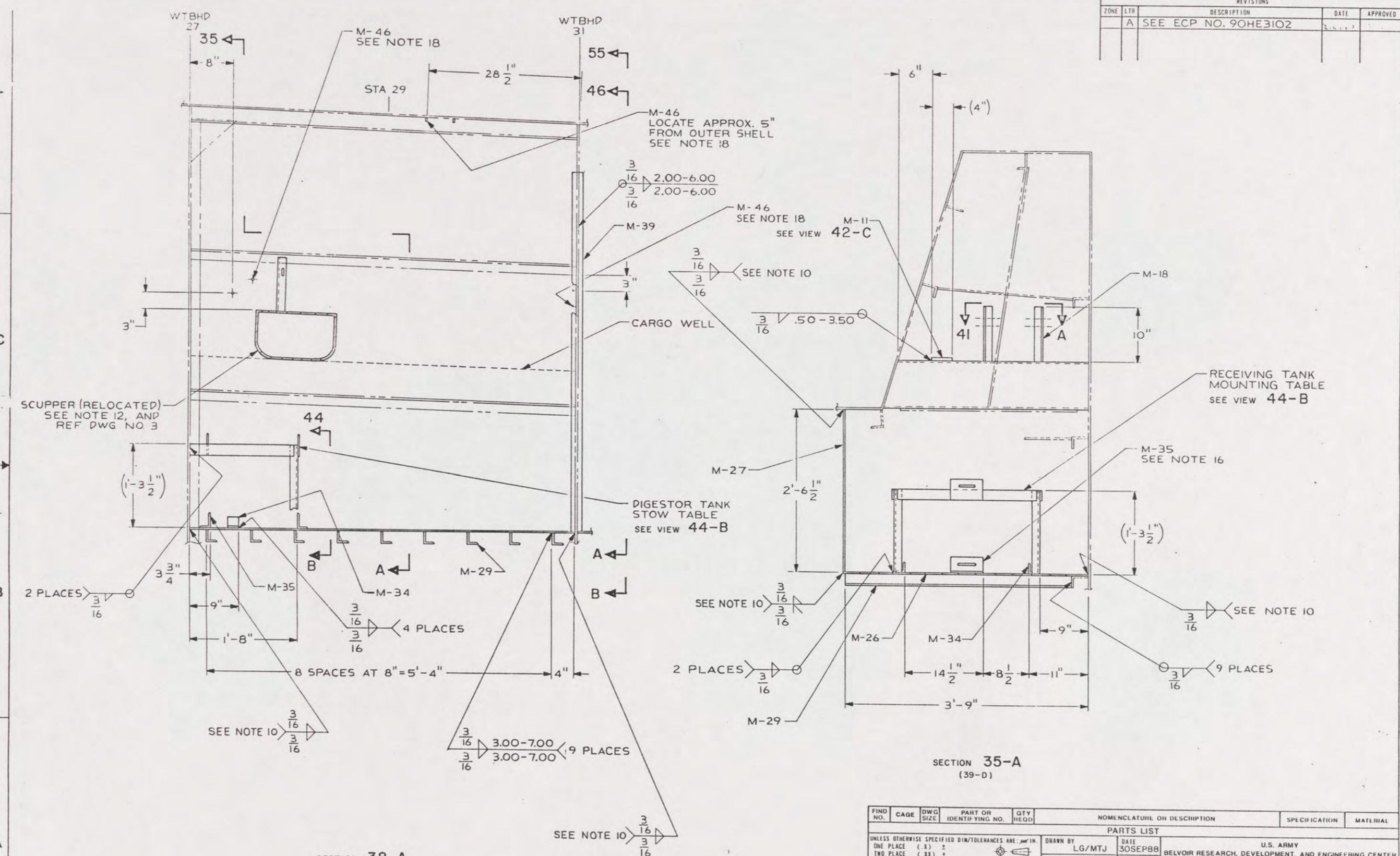
FIND NO.	CAGE	DWG SIZE	PART OR IDENTIFYING NO.	QTY REQD	NOMENCLATURE OR DESCRIPTION	SPECIFICATION	MATERIAL
UNLESS OTHERWISE SPECIFIED DIM/TOLERANCES ARE: $\frac{1}{16}$ IN.							
ONE PLACE (.X) \pm		TWO PLACE (.XX) \pm		THREE PLACE (.XXX) \pm		ANGLES \pm	
DO NOT SCALE THIS DRAWING				FOR INTERPRETATION OF DRAWING 000-STD-100 APPLIES			
REMOVE BURRS AND SHARP EDGES TO				BREAK SHARP EDGES FILLET RADIUS TO			
MATERIAL				DESIGN APPROVAL			
APPROVED FOR PROCUREMENT				DATE			
CONTRACT NO.				PARTS LIST			
DRAWN BY LG/MTJ				DATE 30SEP88			
CHECKED BY G.T. PARD				DATE 15NOV 88			
THIRD ANGLE PROJECTION				U.S. ARMY			
				BELVOIR RESEARCH, DEVELOPMENT, AND ENGINEERING CENTER			
				FORT BELVOIR, VIRGINIA 22060-5606			
				LCM-8, MOD I,			
				MARINE SANITATION DEVICE			
SIZE A1		CAGE 97403		DWG NO. 13226E9468		SHEET 4	

32 31 30 29 28 27 26 25

72

40 39 38 37 36 35 34 33

REVISIONS				
ZONE	LTR	DESCRIPTION	DATE	APPROVED
	A	SEE ECP NO. 90HE3102		



SECTION 38-A
(5-B)

SECTION 35-A
(39-D)

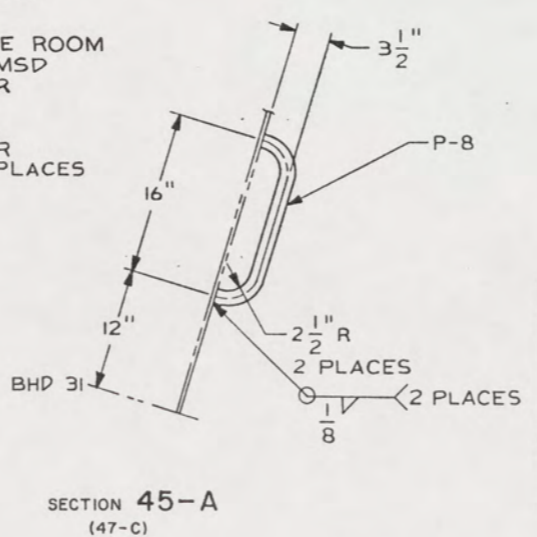
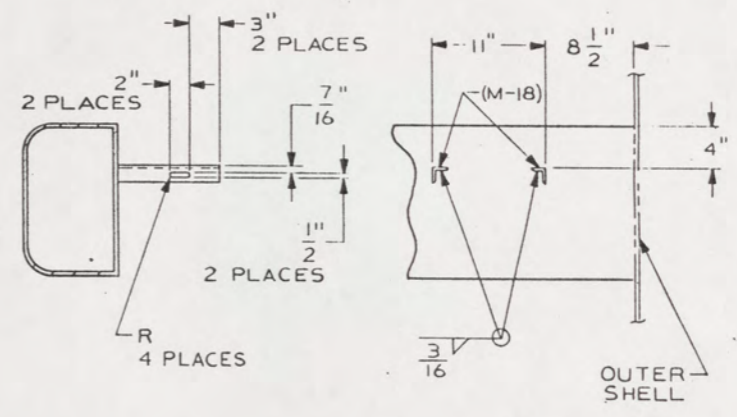
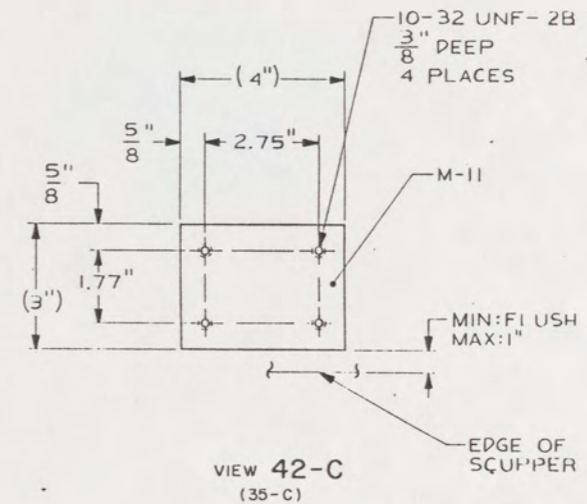
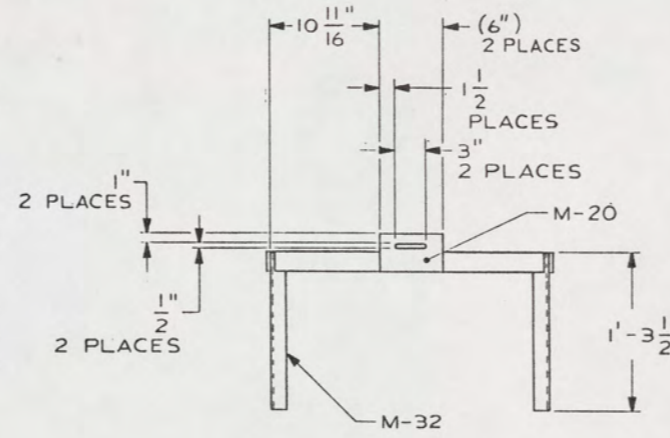
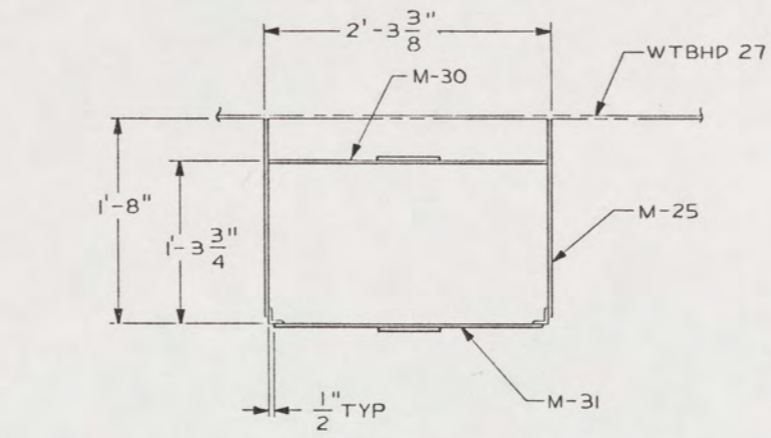
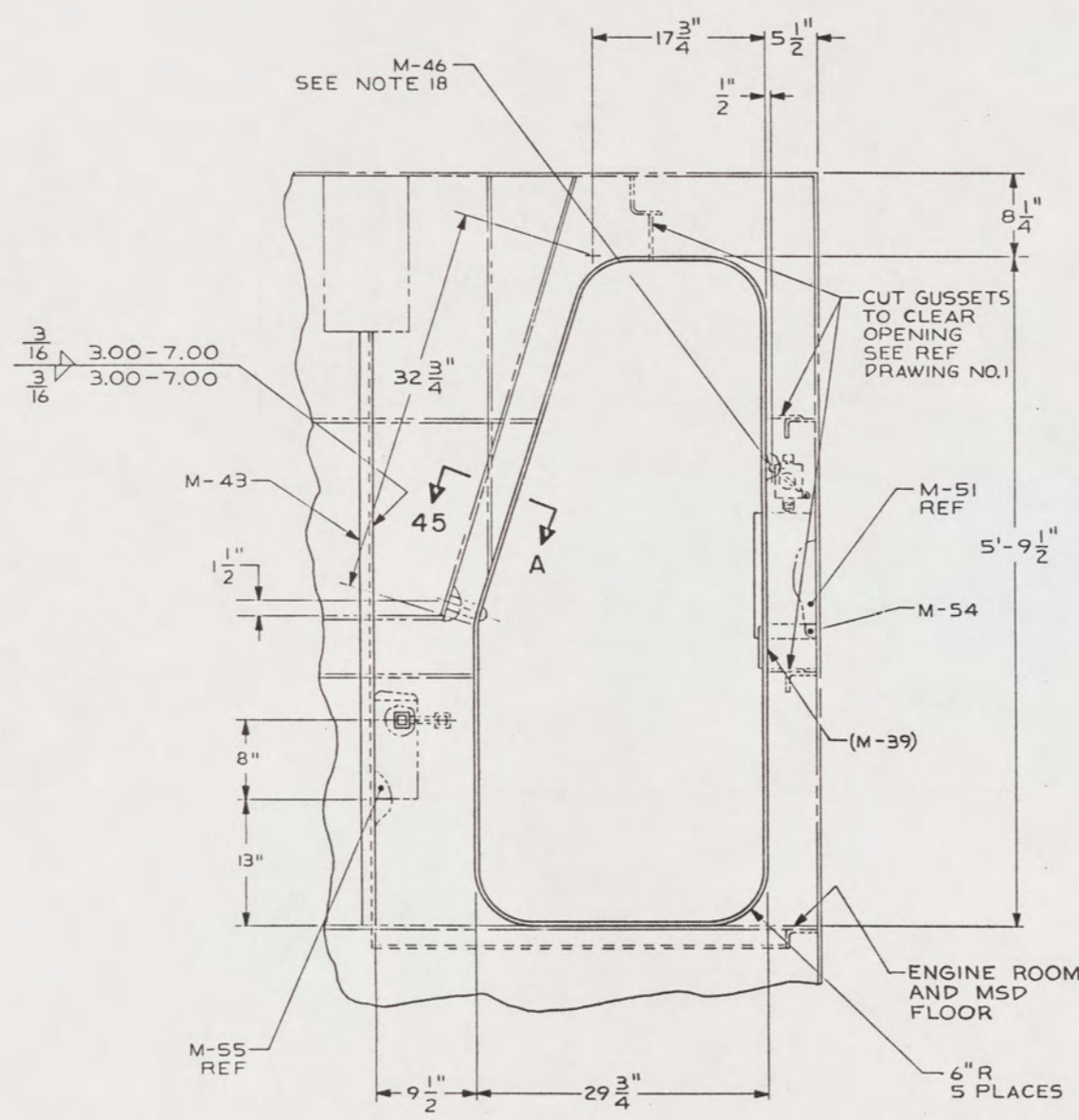
FIND NO.	CAGE	DWG SIZE	PART OR IDENTIFYING NO.	QTY REQD	NOMENCLATURE OR DESCRIPTION	SPECIFICATION	MATERIAL
PARTS LIST							
UNLESS OTHERWISE SPECIFIED DIM/TOLERANCES ARE: IN.					DRAWN BY	DATE	U.S. ARMY
ONE PLACE (.X) ±					LG/MTJ	30SEP88	BELVOIR RESEARCH, DEVELOPMENT, AND ENGINEERING CENTER
TWO PLACE (.XX) ±					CHECKED BY	15 NOV 88	FORT BELVOIR, VIRGINIA 22060-5606
THREE PLACE (.XXX) ±					THIRD ANGLE PROJECTION	CONTRACT NO.	
ANGLES ±					LCM-8, MOD I, MARINE SANITATION DEVICE		
DO NOT SCALE THIS DRAWING					DESIGN APPROVAL		
FOR INTERPRETATION OF DRAWING GO TO 100 APPLIES					REMOVE BURRS AND BREAK SHARP EDGES		
					SHARP EDGES TO		
					FILLET RADIUS TO		
MATERIAL					APPROVED FOR PROCUREMENT	SIZE	CAGE
					DATE	A1	97403
						DWG NO.	13226E9468
						SCALE	SHEET 5

73

40 39 38 37 36 35 34 33

48 47 46 45 44 43 42 41

REVISIONS				
ZONE	LTR	DESCRIPTION	DATE	APPROVED
A		SEE ECP NO. 90HE3102		

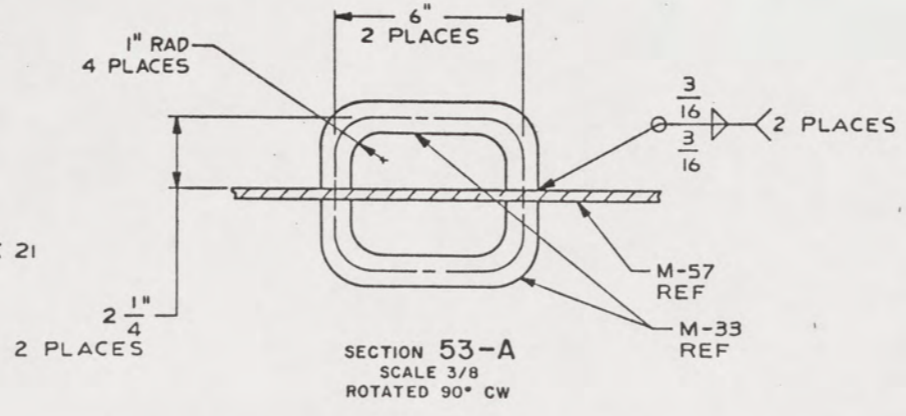
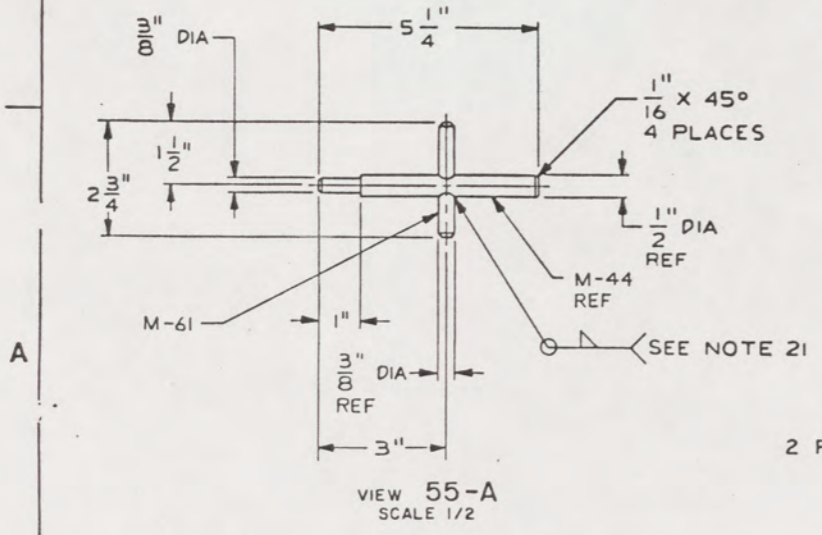
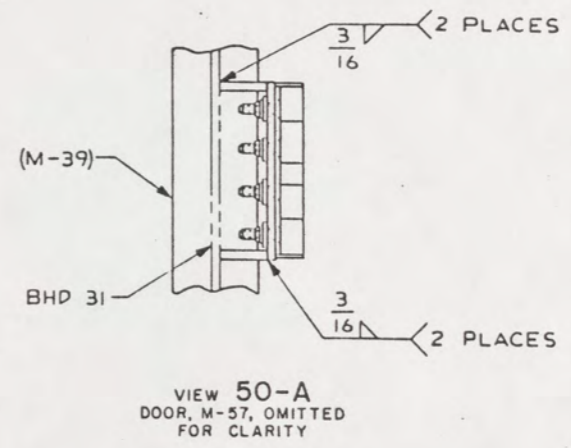
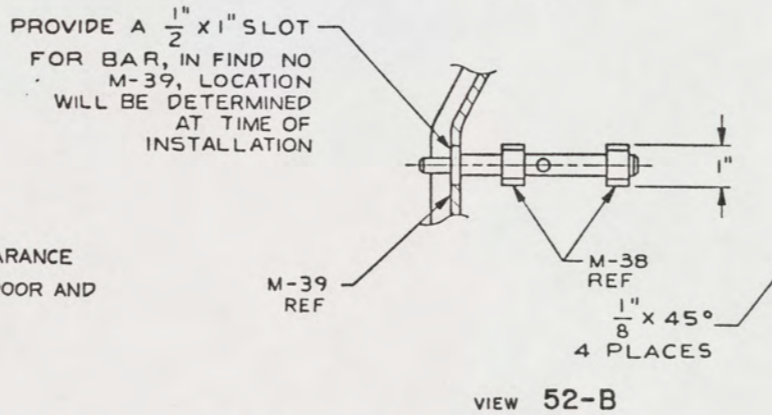
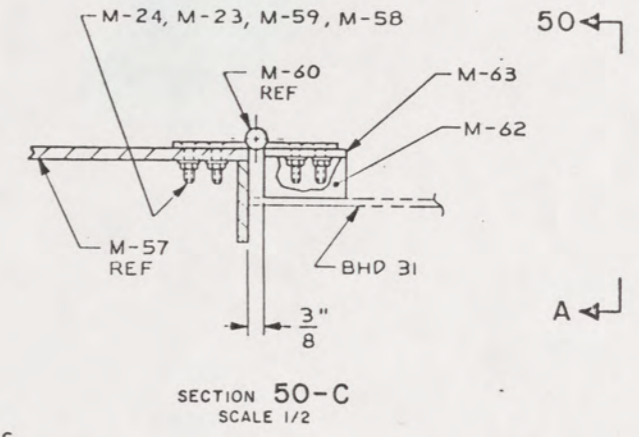
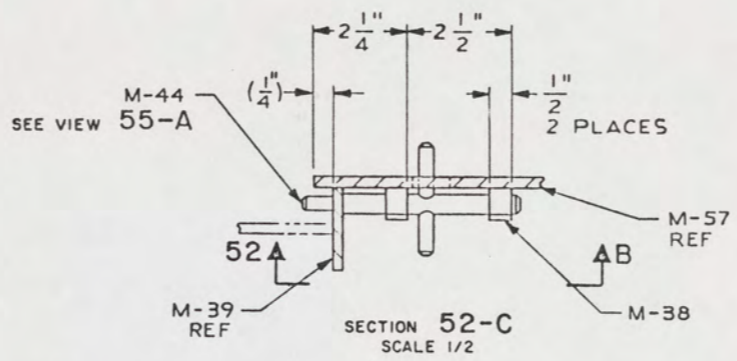
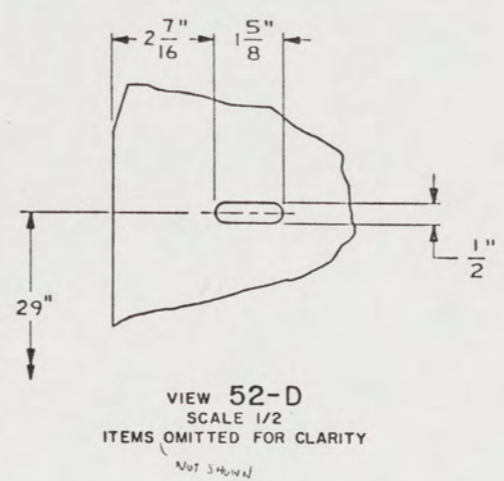
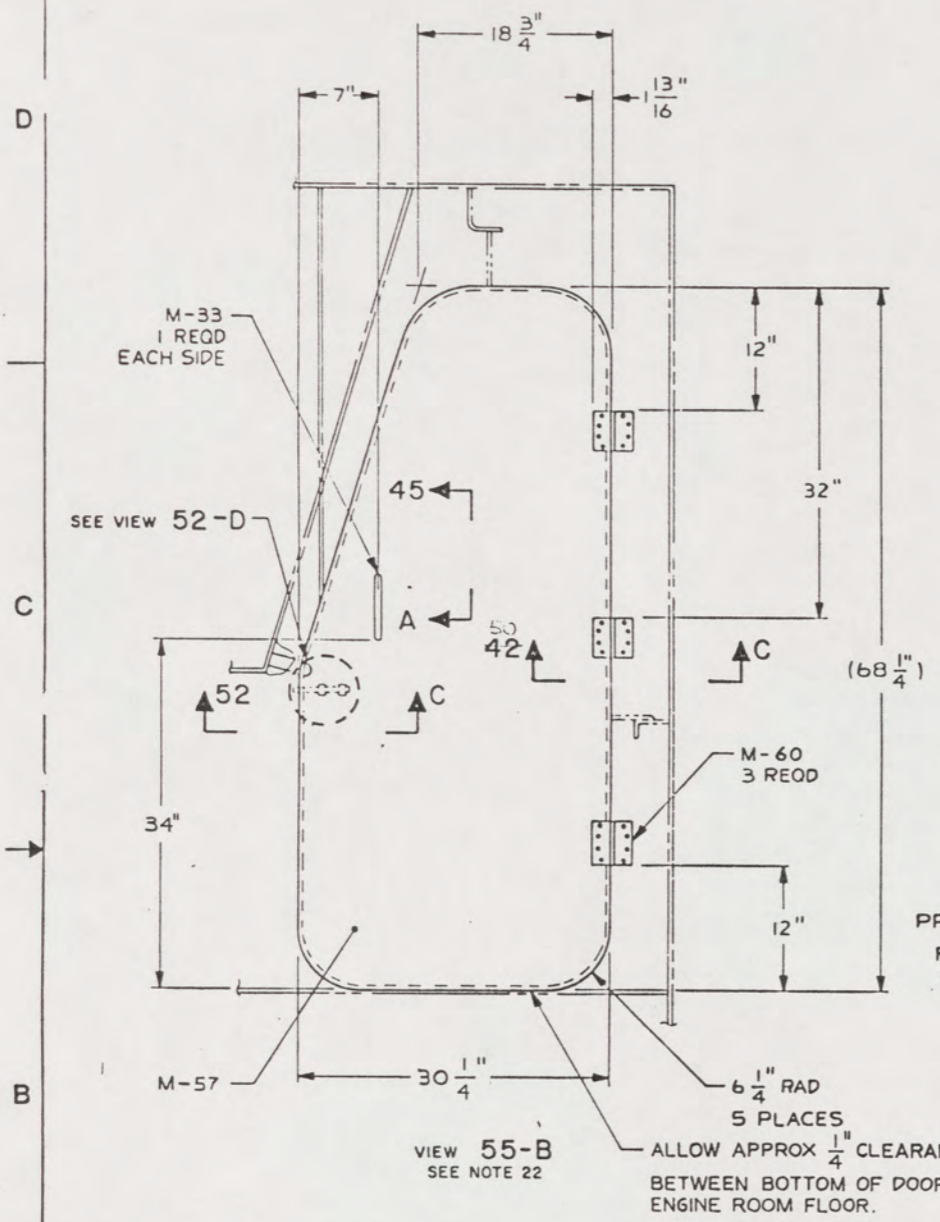


FIND NO.	CAGE	DWG SIZE	PART OR IDENTIFYING NO.	QTY REQD	NOMENCLATURE OR DESCRIPTION	SPECIFICATION	MATERIAL
PARTS LIST							
UNLESS OTHERWISE SPECIFIED DIM/TOLERANCES ARE: .001 IN.				DRAWN BY LG/MTJ DATE 30 OCT 88			
ONE PLACE (.X) ±				CHECKED BY GY PWS DATE 15 NOV 88			
TWO PLACE (.XX) ±				CONTRACT NO.			
THREE PLACE (.XXX) ±				DESIGN APPROVAL: [Signature] DATE 15 NOV 88			
ANGLES ±				APPROVED FOR PROCUREMENT: [Signature] DATE 20 OCT 88			
THIRD ANGLE PROJECTION				SIZE A1 CAGE 97403 DWG NO. 13226E9468			
DO NOT SCALE THIS DRAWING				SCALE SHEET 6			
FOR INTERPRETATION OF DRAWING DOD-STD-100 APPLIES							
REMOVE BURRS AND SHARP EDGES TO BREAK SHARP EDGES FILLET RADIUS TO							
MATERIAL							

48 47 46 45 44 43 42 41

74

REVISIONS				
ZONE	LTR	DESCRIPTION	DATE	APPROVED
	A	SEE ECP NO. 90HE3102		



PROVIDE A 1/2" x 1" SLOT FOR BAR, IN FIND NO M-39, LOCATION WILL BE DETERMINED AT TIME OF INSTALLATION

ALLOW APPROX 1/4" CLEARANCE BETWEEN BOTTOM OF DOOR AND ENGINE ROOM FLOOR.

FIND NO.	CAGE	DWG SIZE	PART OR IDENTIFYING NO.	QTY REQD	NOMENCLATURE OR DESCRIPTION	SPECIFICATION	MATERIAL
UNLESS OTHERWISE SPECIFIED DIM/TOLERANCES ARE: IN.							
ONE PLACE	(.1)						
TWO PLACE	(.02)						
THREE PLACE	(.005)						
ANGLES							
DO NOT SCALE THIS DRAWING							
FOR INTERPRETATION OF DRAWING GOO STD-100 APPLIES							
REMOVE BURRS AND BREAK SHARP EDGES							
SHARP EDGES	TO						
FILLET RADIUS	TO						
MATERIAL							
PARTS LIST					U.S. ARMY BELVOIR RESEARCH, DEVELOPMENT, AND ENGINEERING CENTER FORT BELVOIR, VIRGINIA 22060-5606		
DRAWN BY: LG/MTJ CHECKED BY: GT/280 DATE: 15 JUN 88					CONTRACT NO. DESIGN APPROVAL: Joseph H. Smart DATE: 5 APR 89 APPROVED FOR PROCUREMENT: Joseph H. Smart DATE: 12 APR 89		
LCM-8, MOD I, MARINE SANITATION DEVICE					SIZE: A1	CAGE: 97403	DWG NO: 13226E9468
					SCALE:	SHEET 7	

75