

NOTES:

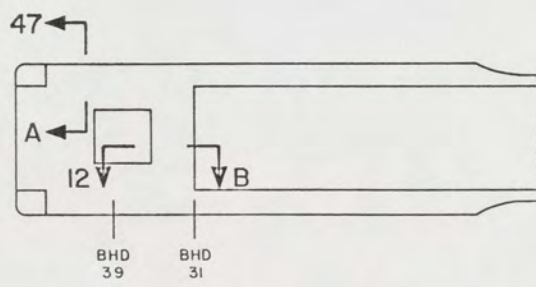
- THIS DRAWING HAS BEEN DEVELOPED FROM SHIPCHECK INFORMATION FOR ACCOMPLISHING THE INSTALLATION OF MISCELLANEOUS STRUCTURAL DETAILS TO LCM-8, MOD-1.
- ALL FABRICATION WELDING AND INSPECTION TO BE IN ACCORDANCE WITH NAVSEA 0500-LP-014-5010, WELD SIZES BASED ON USE OF AWS A5.1, CLASS E7018 ELECTRODES FOR LC STEEL TO LC STEEL.
- EQUIPMENT AND WORKMANSHIP SHALL BE IN ACCORDANCE WITH USCG AND ABS REGULATIONS.
- REPAIR ALL PAINT DAMAGED BY THIS INSTALLATION AND PAINT ALL NEW STEEL IN ACCORDANCE WITH U.S. ARMY TECHNICAL BULLETIN TB43-0144.
- MATERIAL ORDERED ON THIS DRAWING IS NOT INTENDED TO BE RESTRICTIVE. SUBSTITUTION OF EQUAL QUALITY MATERIAL MAY BE MADE.
- SLIGHT DEVIATIONS FROM DIMENSIONS SHOWN ARE PERMISSIBLE TO SUIT ACTUAL CONDITIONS FOUND ABOARD THE VESSEL.
- COMPONENTS SHOWN BY SOLID, HEAVY LINES ARE NEW AND ARE TO BE INSTALLED IN ACCORDANCE WITH THIS DRAWING. PHANTOM LINES INDICATE EXISTING COMPONENTS INSTALLED BY DRAWINGS REFERENCED AS NOTED.
- EXISTING COUPLING BODY, (REF. DODGE NO. PX110) SHALL BE USED FOR NEW ENGINE AND EXISTING RAMP PUMP CONNECTION. BUSHING, FIND NO. 9, SHALL BE USED ON PTO SIDE OF COUPLING TO ACCOMMODATE NEW ENGINE SHAFT DIAMETER.
- SHIMS, FIND NO. 28, MAY BE REQUIRED TO PROPERLY ALIGN CENTER LINES OF RAMP PUMP SHAFT AND PTO SHAFT ON ENGINE. SEE VIEW 1B-A.
- MAXIMUM MISALIGNMENT OF PUMP AND TRANSMISSION P.T.O.:
ANGULAR 4°, PARALLEL 1/8"
- ALTERNATORS USED ON EARLIER BOATS ENGINES SHALL BE SALVAGED AND RE-USED ON NEW BOATS ENGINES. (REF MOTOROLA NO. 85A-3006P)
- REMOVE AND REPLACE EXISTING ALTERNATOR PULLEY WITH NEW PULLEY, FIND NO. 32, USING EXISTING KEY, WASHER AND NUT ON ALTERNATOR SHAFT. PULLEY SHALL BE MOUNTED FLUSH AGAINST ALTERNATOR FAN FACE PLATE.
- BELTS, FIND NO. 29, SHALL BE SPECIFIED AS 2 (TWO) SETS OF MATCHED PAIRS, AND PROPERLY ALIGNED WITH ENGINE CAMSHAFT PULLEY USING SLOTS PROVIDED IN ALTERNATOR MOUNTING BRACKET, VIEW 37-A.
- ALTERNATOR MOUNTING BRACKET, REF VIEW 27-A, SHALL BE ASSEMBLED TO BOATS ENGINES USING EXISTING BOLTS WITH LOCKWASHERS, FIND NO. 20.
- ALL FOUNDATIONS AND BRACKETS SHALL BE TEMPLATED FROM IT'S COMPONENT PRIOR TO FABRICATION. (UNLESS OTHERWISE SHOWN.)
- GRIND SMOOTH ALL SHARP OR JAGGED CORNERS AND EDGES LIABLE TO DAMAGE EQUIPMENT OR INJURE PERSONNEL.
- REMOVE EXISTING RUDDER ANGLE INDICATOR COMPONENTS AND WIRING (EXCEPT SECURING HARDWARE) AND REPLACE WITH FIND NO. 10, 42, 43 AND 47 IN ACCORDANCE WITH MANUFACTURER'S INSTRUCTIONS.

REFERENCE DRAWINGS APPLICABLE TO HULL NUMBERS 8510 THRU 8560 AND 8580 THRU 8618		
NO.	DRAWING NO.	TITLE
1	13226E944B	ENGINE FOUNDATIONS
2	13226E9476	POWER LIGHTING/IC SYSTEM
3	145-451093B	LCM-8, MOD-1, ARRGT/DETAILS STEERING GEAR

REFERENCE DRAWINGS APPLICABLE TO HULL NUMBERS 8520 THRU 8539		
NO.	DRAWING NO.	TITLE
1	13226E944B	ENGINE FOUNDATIONS
2	13226E9476	POWER LIGHTING/IC SYSTEM
3	145-2534224	LCM-8, MOD-1, ARRGT/DETAILS STEERING GEAR

SHEETS						STATUS OF REVISIONS	
6	5	4	3	2	1	DATE	APPROVED
A	-	-	-	-	A	20 NOV 88	RMS

SEE ECP NO. 90HE3102 AND 90HE3103



KEY VIEW 5-B
SCALE NONE

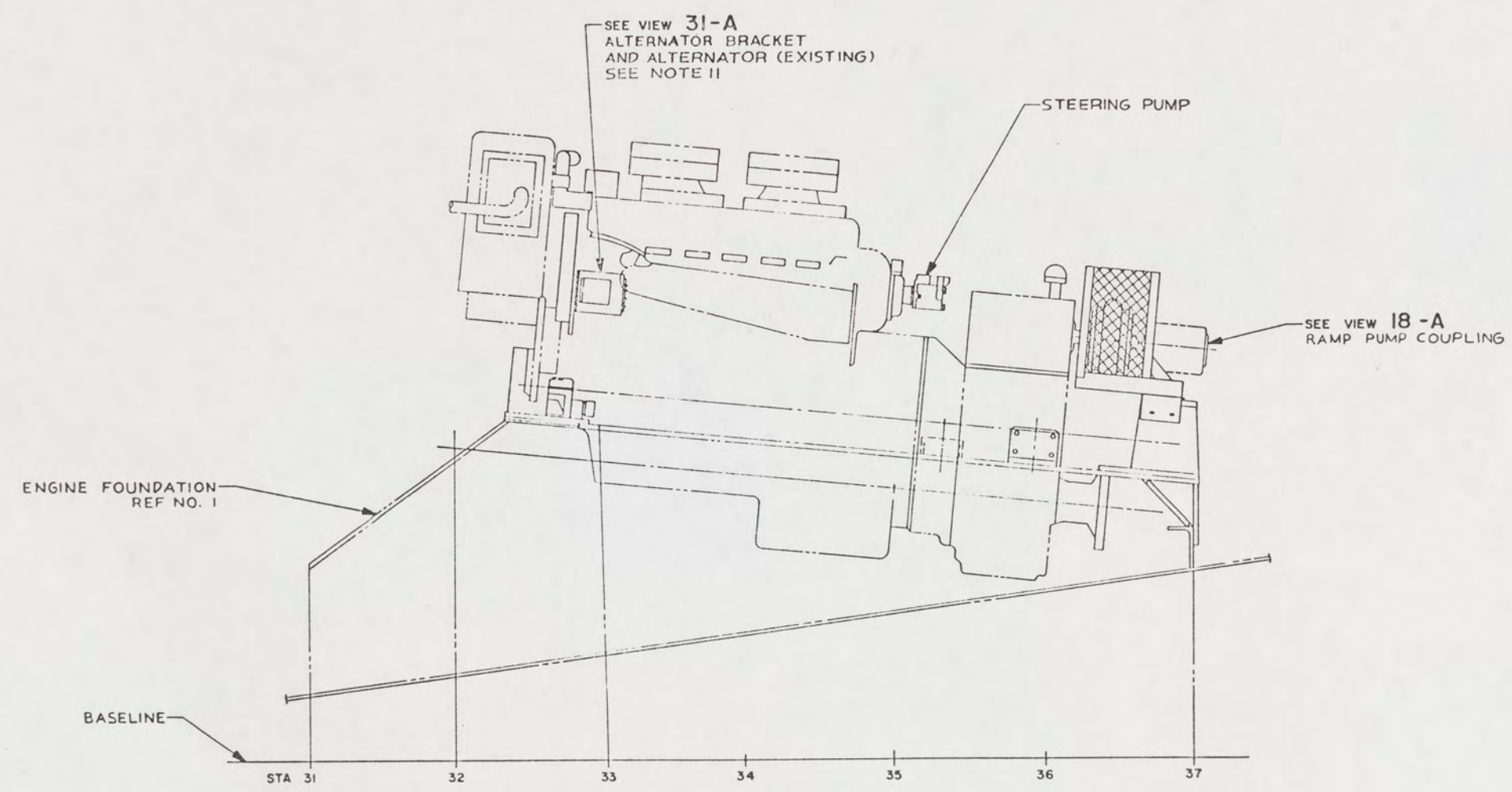
YARD	FIND NO.	QTY	ALLOY	DESCRIPTION	SPECIFICATION	MATERIAL
YARD 47			ALLOY 360	BAR, RD, 1/4" DIA X 27"	ASTM B16	BRASS
YARD 46			M551967-2	NUT, HEX, 1/4-20 UNC-2B, STEEL, CD PL		
YARD 45			MS27183-10	WASHER, FLAT, 1/4" NOM SIZE, STEEL, CD PL		
YARD 44			MS90725-10	SCREW, HEX HD, 1/4-20 UNC-2A X 1 1/4" L, STEEL, CD PL		
YARD 43			ORD ON REF 2	REF UNIVERSAL RUDDER FOLLOW-UP		
GFE 42	37919		530-072	RUDDER STOCK CLAMP (WAGNER)	COML	BRONZE
YARD 41				SHEET, 11 GA (.120), 2 1/2" X 2 1/2"	ASTM A366	STEEL
YARD 40				SHEET, 11 GA (.120), 3" X 9"	ASTM A366	STEEL
YARD 39	89849		3/4" NO. 10	EXP METAL-RYEX, 10" X 20", STD (RYERSON)	COML	STEEL
YARD 38				PLATE, 10.2 LB	ASTM A36	STEEL
YARD 37				PLATE, 10.2 LB	ASTM A36	STEEL
YARD 36				PLATE, 10.2 LB	ASTM A36	STEEL
YARD 35			MS90725-109	SCREW, HEX HD, 1/2-13 UNC X 1" LG, STEEL, CD PL		
YARD 34			MS27183-17	WASHER, FLAT, 1/2" ID, STEEL, CD PL		
YARD 33			MS90725-124	SCREW, HEX HD, 1/2-13 UNC X 4 1/4" LG, STEEL, CD PL		
YARD 32			GR G12150	BAR, ROUND, 2 3/4 DIA STK	ASTM A108	STEEL
YARD 31			MS90725-62	SCREW, HEX HD, 3/8-16 UNC X 1 1/4" LG, STEEL, CD PL		
YARD 30			MS90725-59	SCREW, HEX HD, 3/8-16 UNC X 7/8" LG, STEEL, CD PL		
YARD 29	24161		A-41 (SEE NOTE 13)	BELT, "V", 1/2" X 42.3 PITCH LGTH (GATES)	COML	RUBBER
YARD 28				BAR, FLAT, 2" X 5 1/4", THICKNESS TO SUIT	ASTM A36	STEEL
YARD 27				SHEET, 11 GA (.120), 3" X 39 1/2"	ASTM A366	STEEL
YARD 26				ANGLE, 1/8 X 1 1/2 X 2" X 1 1/2" LG	ASTM A36	STEEL
YARD 25				SHEET, 11 GA (.120), 2" X 4 7/8"	ASTM A366	STEEL
YARD 24				PLATE, 10.2 LB	ASTM A36	STEEL
YARD 23				PLATE, 10.2 LB	ASTM A36	STEEL
YARD 22			M551967-8	NUT, HEX, 3/8-16 UNC-2B, STEEL, CD PL		
YARD 21			MS27183-13	WASHER, FLAT, 3/8" ID, STEEL, CD PL		
YARD 20			MS35338-46	WASHER, LOCK, 3/8" NOM SIZE, STEEL, CD PL		
YARD 19				BAR, FLAT, 1/4" X 1"	ASTM A36	STEEL
YARD 18				BAR, FLAT, 1/4" X 2"	ASTM A36	STEEL
YARD 17			M551967-14	NUT, HEX, 1/2-13 UNC-2B, STEEL, CD PL		
YARD 16			MS35338-48	WASHER, LOCK, 1/2" NOM SIZE, STEEL, CD PL		
YARD 15			MS90725-60	SCREW, HEX HD, 3/8-16 UNC-2A X 1" L, STEEL, CD PL		
YARD 14			MS35338-50	WASHER, LOCK, 5/8" NOM SIZE, STEEL, CD PL		
YARD 13			M551967-20	NUT, HEX, 5/8-11 UNC-2B, STEEL, CD PL		
YARD 12			MS00725-164	SCREW, HEX HD, 5/8-11 UNC-2A X 2" L, STEEL, CD PL		
YARD 11				BAR, FLAT, 1/4" X 2"	ASTM A36	STEEL
YARD 10				PLATE, 12.76 LB	ASTM A36	STEEL
YARD 9	71956		2517	BUSHING, 1 1/2" BORE W/3/8 X 3/16 KEYWAY (DODGE)	COML	STEEL
YARD 8				BAR, FLAT, 7/8" X 4"	ASTM A36	STEEL
YARD 7				PLATE, 20.4 LB	ASTM A36	STEEL
YARD 6				PLATE, 20.4 LB	ASTM A36	STEEL
YARD 5				BAR, FLAT, 3/8" X 2 1/2"	ASTM A36	STEEL
YARD 4	89849		3/4" NO. 10	EXP METAL-RYEX, 10" X 30", STD (RYERSON)	COML	STEEL
YARD 3				STRIP, 1/8" X 1"	ASTM A569	STEEL
YARD 2				STRIP, 1/8" X 1"	ASTM A569	STEEL
YARD 1				PLATE, 10.2 LB	ASTM A36	STEEL

UNLESS OTHERWISE SPECIFIED DIM/TOLERANCES ARE: IN		DRAWN BY: A1		DATE: 30 NOV 84	
ONE PLACE () ±	TWO PLACE () ±	THREE PLACE () ±	THIRD ANGLE PROJECTION	CHECKED BY: GY Pils	DATE: 15 NOV 88
DO NOT SCALE THIS DRAWING			CONTRACT NO.		
FOR INTERPRETATION OF DRAWING DOD STD 100 APPLIES			DESIGN APPROVAL:		
REMOVE ROUNDS AND BREAK SHARP EDGES			DATE: 15 NOV 88		
FILLER MARK: 10			APPROVED FOR PROCUREMENT:		
MATERIAL:			DATE:		
U.S. ARMY MOBILITY EQUIPMENT RESEARCH AND DEVELOPMENT COMMAND FORT BELVOIR, VIRGINIA 22060					
LCM-8, MOD-1, MISCELLANEOUS STRUCTURAL DETAILS					
SIZE: A1	PSCM: 97403	DWG NO: 13226E9464			
SCALE: 6" = 1'-0" SHEET 1 OF 6					

THIS DRAWING APPLIES TO HULL NUMBERS 8520 THROUGH 8560 AND 8580 THROUGH 8618 ONLY

16 15 14 13 12 11 10 9

REV		DESCRIPTION	DATE	APPROVED



PROFILE VIEW 12-B
STBD SHOWN - PORT SIMILAR
SCALE 1 1/2" = 1'-0"

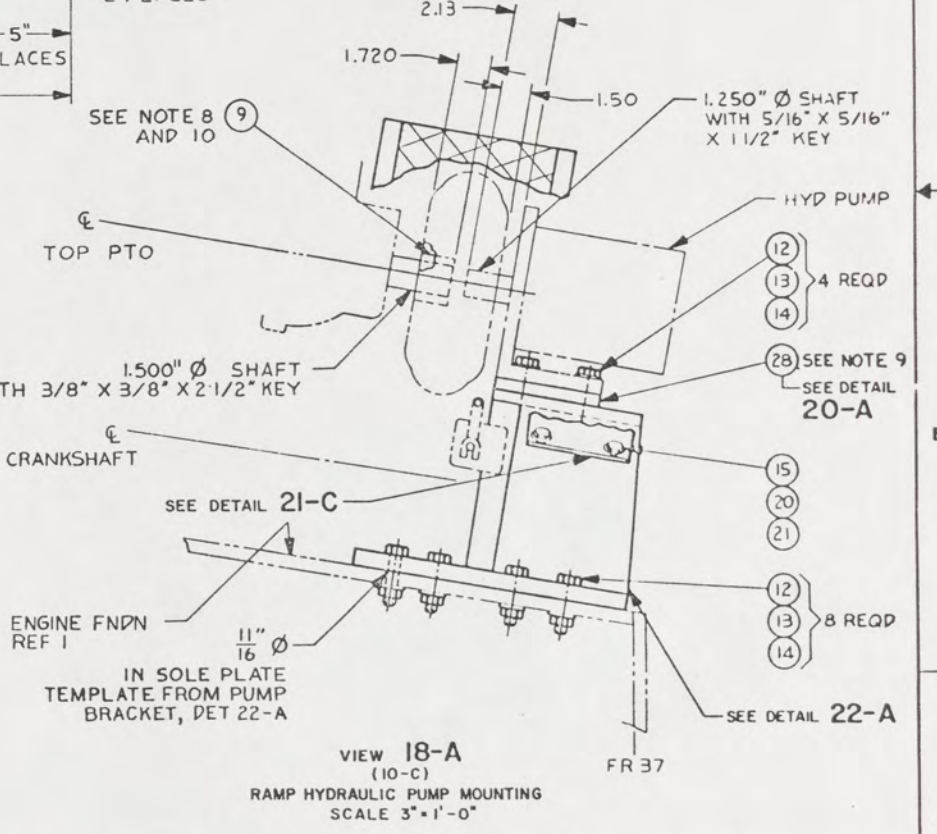
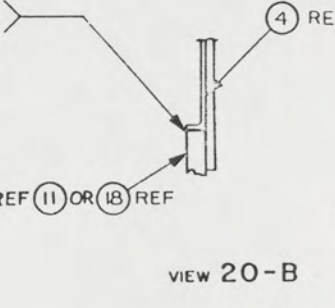
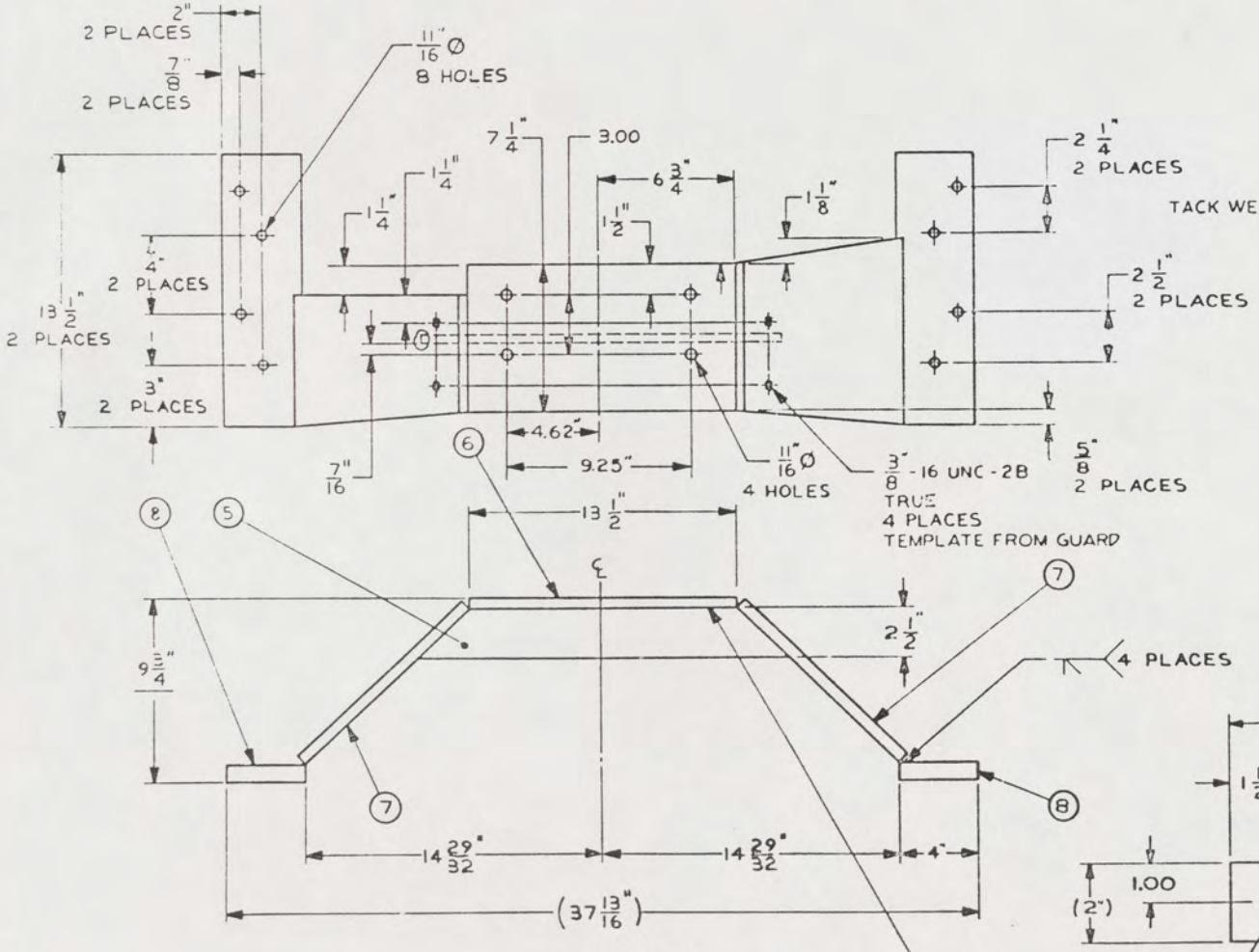
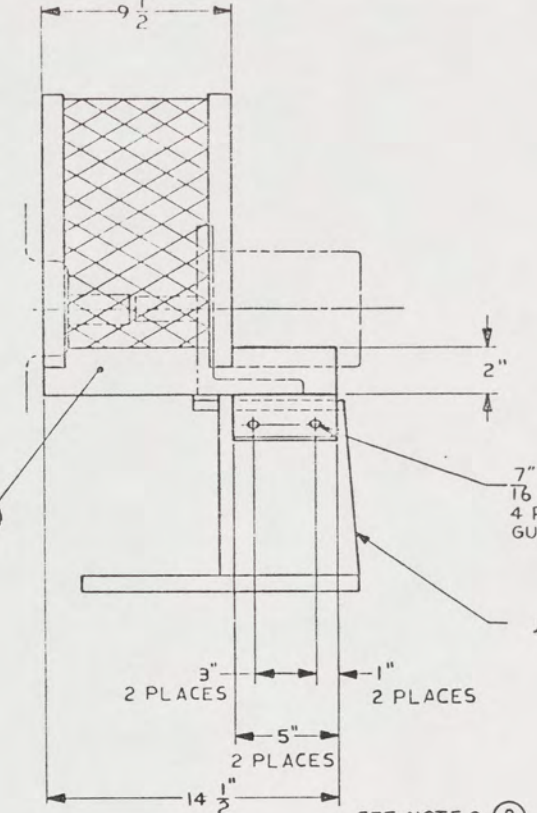
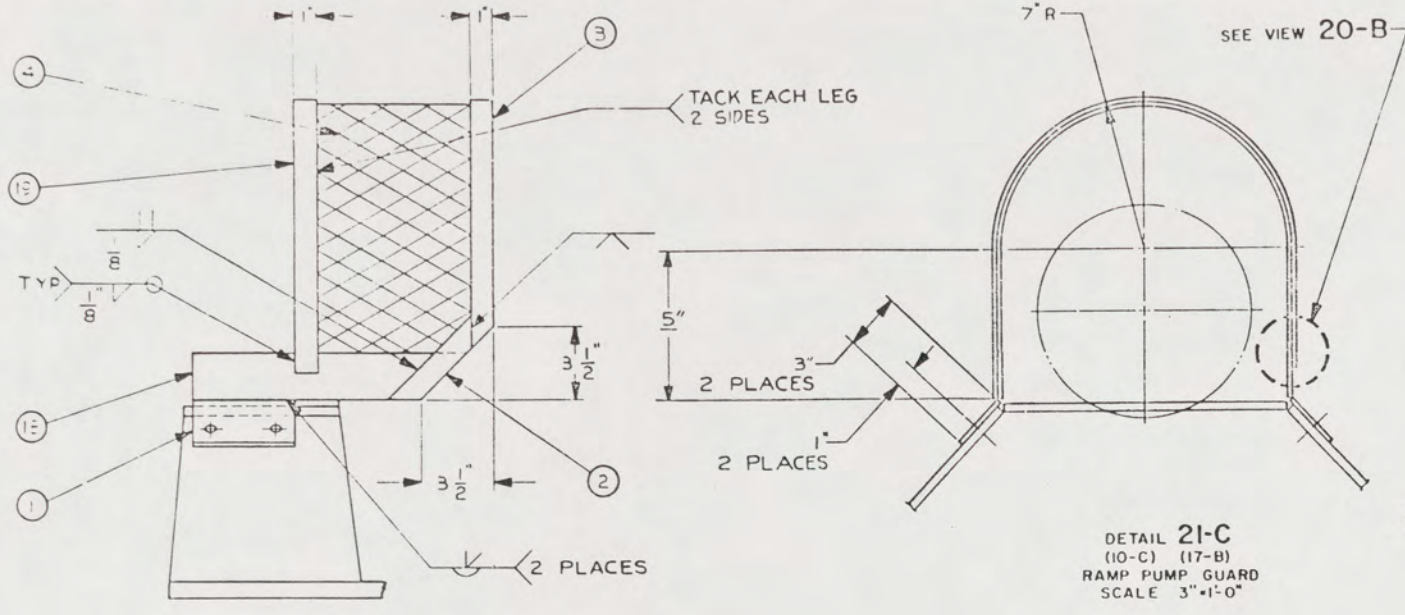
57

UNLESS OTHERWISE SPECIFIED DIM/TOLERANCES ARE $\frac{1}{16}$ " - IN.		DRAWN BY A1	DATE 5 DEC 84	U.S. ARMY MOBILITY EQUIPMENT RESEARCH AND DEVELOPMENT COMMAND FORT BELVOIR, VIRGINIA 22060	
ONE PLACE (1 D) 0	TWO PLACE (1 00) 0	CHECKED BY S. J. P. C. W.	15 NOV 83	LCM-8, MOD-1, MISCELLANEOUS STRUCTURAL DETAILS	
THREE PLACE (1 000) 0	FOUR PLACE (1 0000) 0	THIRD ANGLE PROJECTION	CONTRACT NO.		
DO NOT SCALE THIS DRAWING FOR INTERPRETATION OF DIMENSIONS TO BE APPLIED		DESIGN APPROVAL John H. Dantz DATE 12 NOV 83		SIZE A1	97403
REMOVE BURRS AND BREAK SHARP EDGES SHARP EDGES TO FILLET RADIUS TO		APPROVED FOR PRODUCTION DATE 12 NOV 83		SCALE	
MATERIAL		DATE		QWG NO. 13226E9464	SHEET 2

16 15 14 13 12 11 10 9

24 23 22 21 20 19 18 17

ZONE	ITEM	DESCRIPTION	DATE	APPROVED



DETAIL 22-A (17-A) RAMP HYDRAULIC PUMP FOUNDATION SCALE 3"-1'-0" 2 PLACES

DETAIL 20-A SCALE 6"-1'-0" 4 PLACES

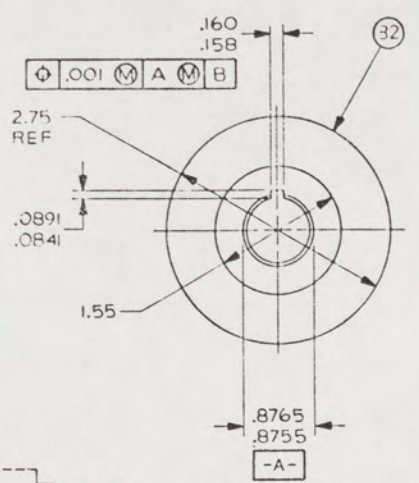
UNLESS OTHERWISE SPECIFIED DIM/TOLERANCES ARE IN INCHES	DRAWN BY A1	DATE 4 DEC 84	U.S. ARMY MOBILITY EQUIPMENT RESEARCH AND DEVELOPMENT COMMAND FORT BELVOIR, VIRGINIA 22060
ONE PLACE (0.01) ±	CHECKED BY GY P400	16 MAR 85	
TWO PLACE (0.001) ±	THIRD ANGLE PROJECTION	CONTRACT NO.	LCM-8, MOD-1, MISCELLANEOUS STRUCTURAL DETAILS
THREE PLACE (0.0001) ±	FOUR ANGLE PROJECTION	DESIGN APPROVAL Robert M. Dutton DATE 15 MAR 85	
DO NOT SCALE THIS DRAWING	FOR INTERPRETATION OF DIMENSIONS SEE 100 APPLIES	APPROVED FOR PROCUREMENT	SIZE A1
REMOVE BURRS AND BREAK SHARP EDGES	SHARP EDGES TO FULLY ROUNDED	DATE 15 MAR 85	FECH 97403
WELDING			AWA 13226E9464
			SCALE SHEET 3

58

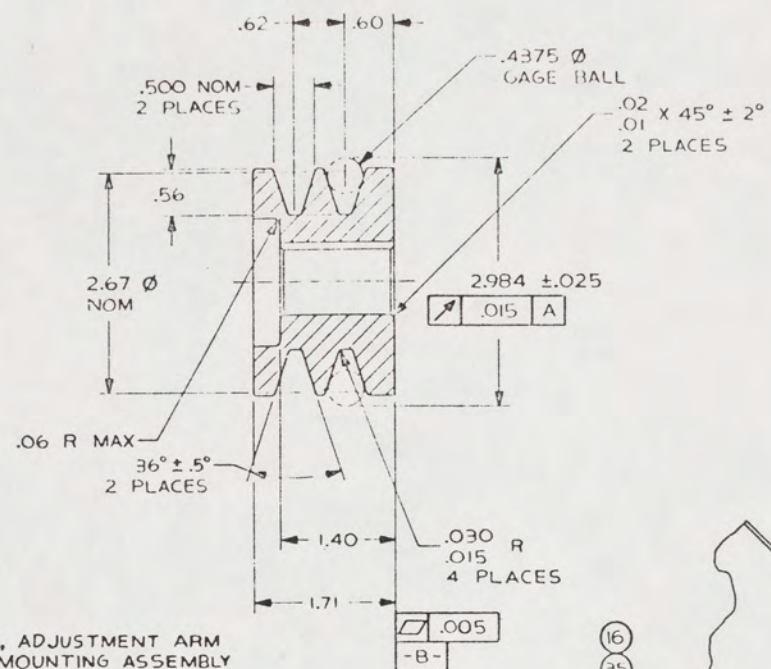
24 23 22 21 20 19 18 17

REVISIONS			
NO	DATE	DESCRIPTION	APPROVER

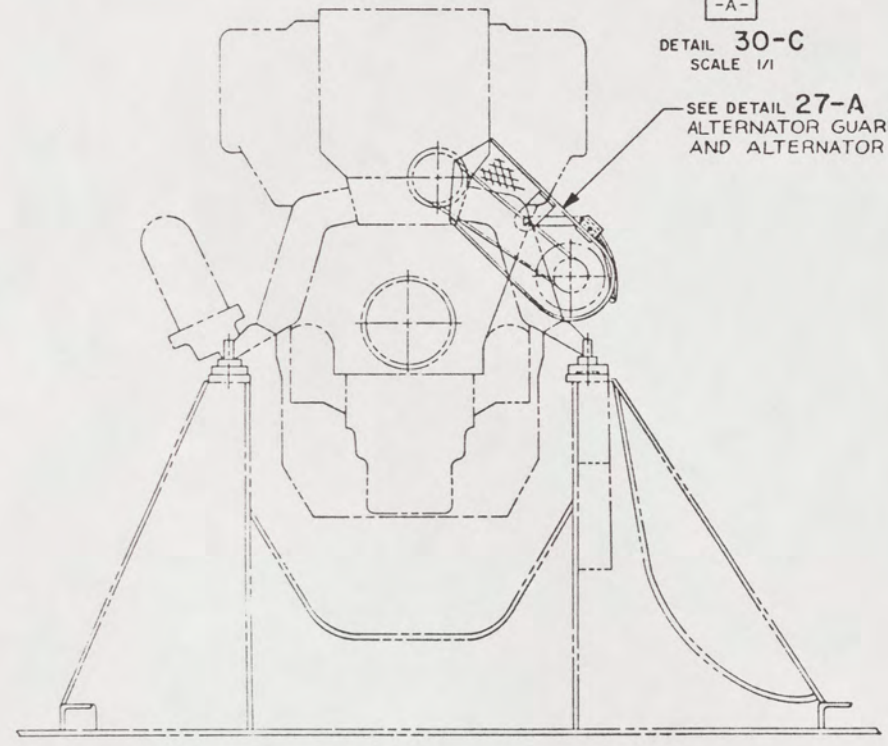
- NOTES
1. SURFACE FINISH 125 RMS ALL OVER.
 2. CADMIUM PLATE IN ACCORDANCE WITH QQ-P-416 CL 2, TYPE III.
 3. DIMENSIONS APPLY AFTER PLATING.
 4. TOLERANCES, UNLESS SHOWN OTHERWISE: ±.03.



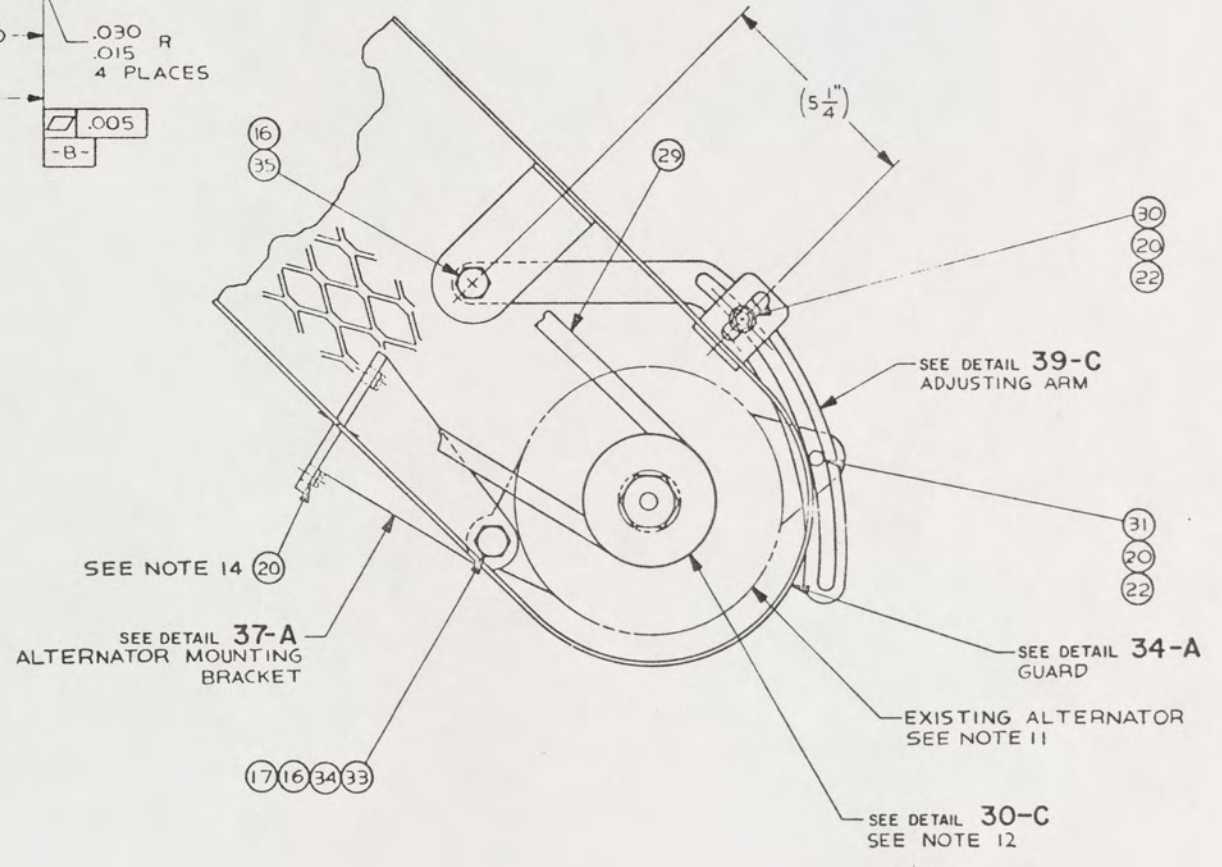
DETAIL 30-C
SCALE 1/1



DETAIL 30-C
SCALE 1/1



VIEW 31-A
(13-D)
ALTERNATOR GUARD ASSEMBLY
SCALE 1 1/2" = 1'-0"



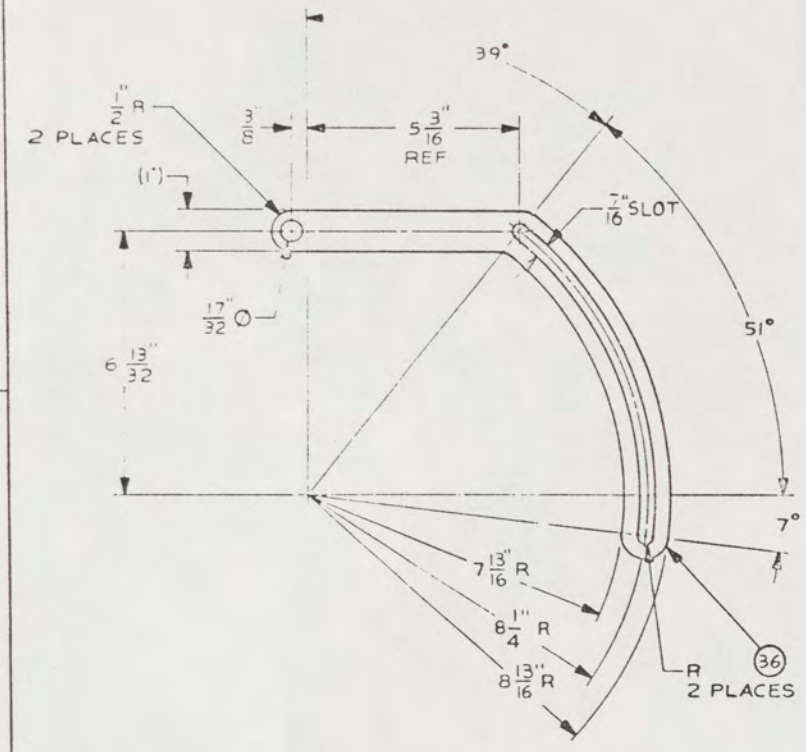
VIEW 27-A
ALTERNATOR MOUNTING ASSEMBLY

59

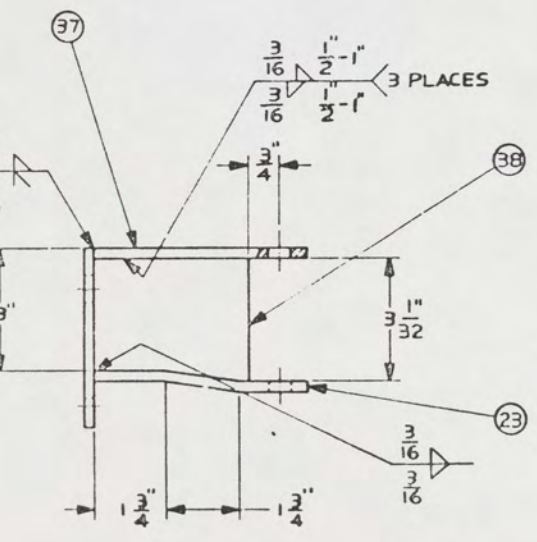
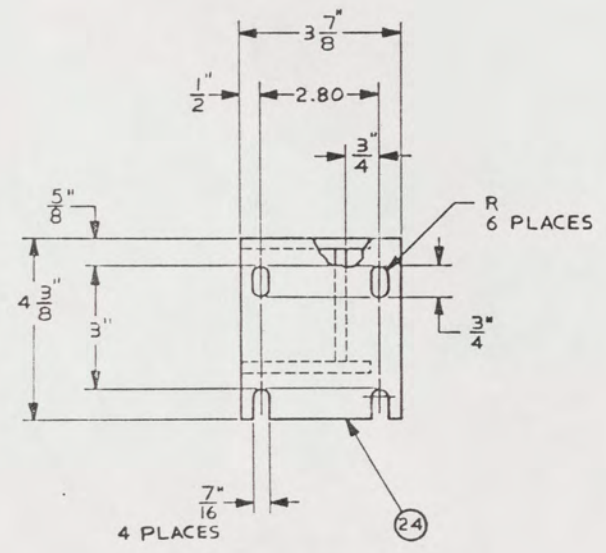
UNLESS OTHERWISE SPECIFIED DIM/TOLERANCES ARE IN INCHES. ONE PLACE (1.0) ± TWO PLACE (0.01) ± THREE PLACE (0.001) ± ANGLES ±	DRAWN BY: HMB CHECKED BY: GY MUD CONTRACT NO:	DATE: 10 JAN 85 DATE: 15 NOV 86	U.S. ARMY MOBILITY EQUIPMENT RESEARCH AND DEVELOPMENT COMMAND FORT BELVOIR, VIRGINIA 22060	
			LCM-8, MOD-1, MISCELLANEOUS STRUCTURAL DETAILS	
DO NOT SCALE THIS DRAWING FOR INTERPRETATION OF DRAWING DIMENSIONS FOR APPLIES REMOVE BURRS AND BREAK SHARP EDGES SHARP EDGES TO FILED EDGES TO MATERIAL	DESIGN APPROVAL: [Signature] DATE: 11/1/85 APPROVED FOR PROCUREMENT: [Signature] DATE:	SIZE: A1 PSCN: 97403 DWS NO: 13226E9464	SCALE: SHEET 4	

40 39 38 37 36 35 34 33

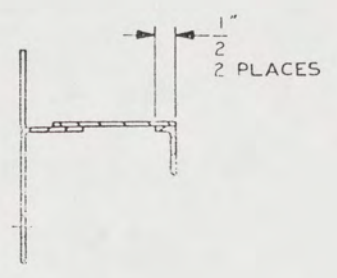
REVISIONS			
DATE	BY	DESCRIPTION	APPROVED



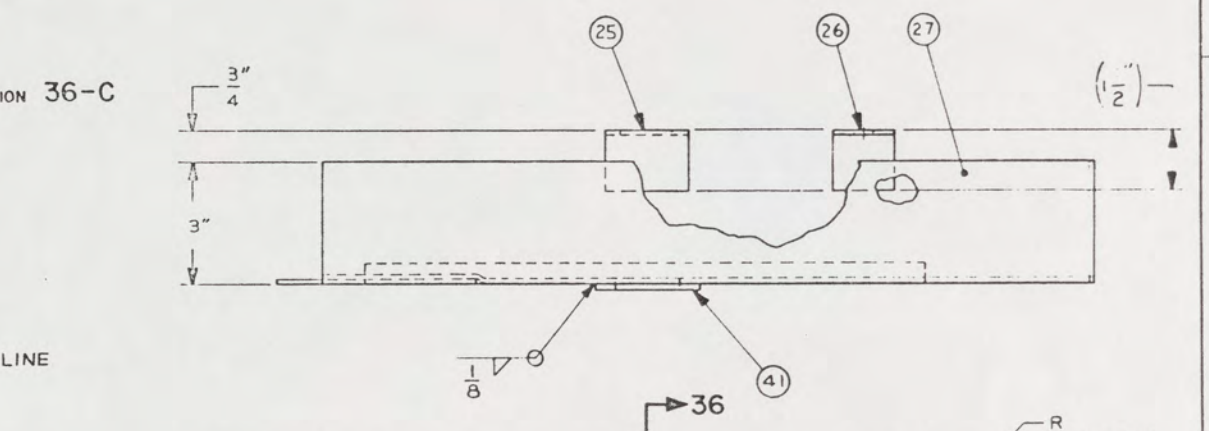
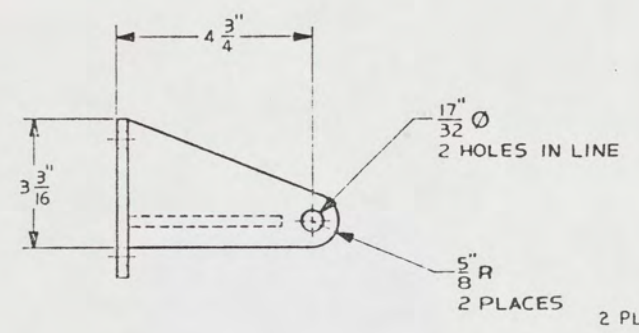
DETAIL 39-C
(25-B)
ALTERNATOR ADJUSTING ARM



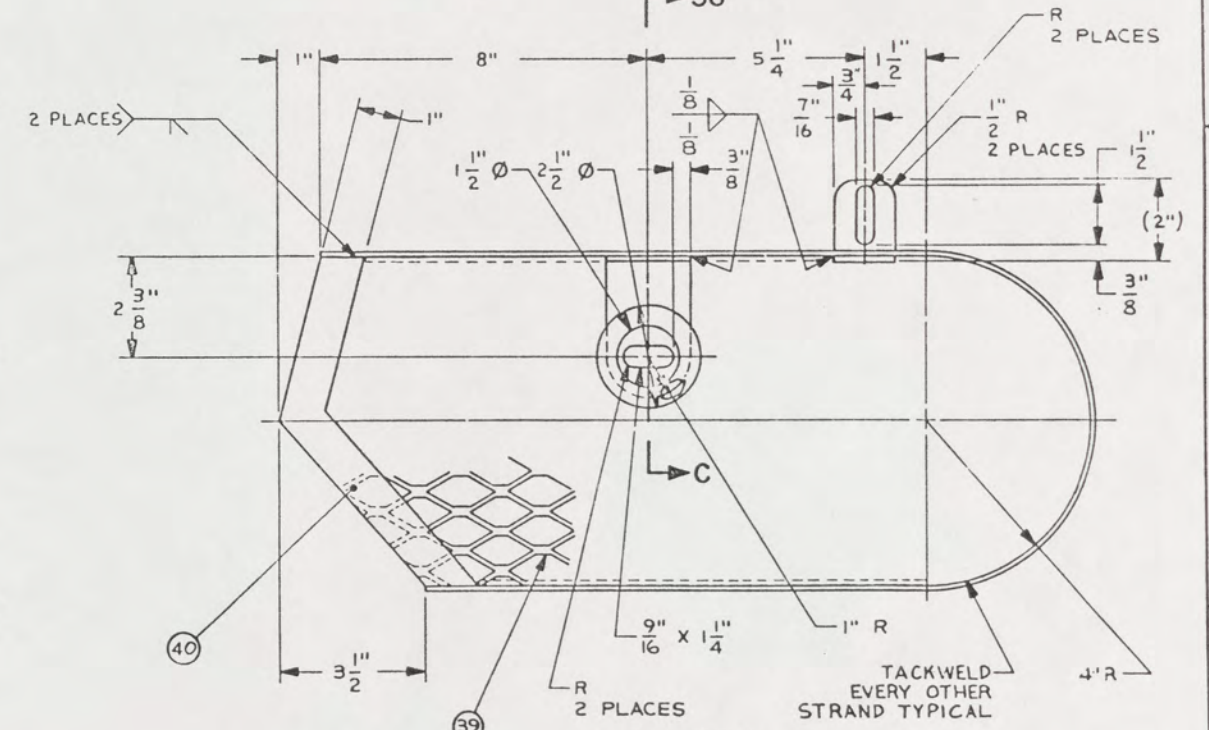
DETAIL 37-A
(28-B)
ALTERNATOR MOUNTING BRACKET



SECTION 36-C



DETAIL 34-A
(25-B)
ALTERNATOR GUARD



UNLESS OTHERWISE SPECIFIED DIM/TOLERANCES ARE IN INCHES		DRAWN BY: HMB	DATE: 14 JAN 55	U.S. ARMY MOBILITY EQUIPMENT RESEARCH AND DEVELOPMENT COMMAND FORT BELVOIR VIRGINIA 22060	
ONE PLACE (1) 2	TWO PLACE (2) 3	THREE PLACE (3) 4	FOUR PLACE (4) 5	CONTRACT NO: STC 68	15 NOV 58
DO NOT SCALE THIS DRAWING			DESIGN APPROVAL: <i>Robert Smith</i>		
FOR INTERPRETATION BY DRAWING OFFICE STD 100 APPLIES			DATE FORW. CD: <i>12/1/58</i>		
REWORK: ADDS AND BREAKS SHARP EDGES			APPROVED FOR PROCUREMENT: <i>Robert Smith</i>		
SHARP EDGES TO			DATE: <i>12/1/58</i>		
FILLET RADIUS TO			SCALE: <i>1/2" = 1"</i>		
MATERIAL:			SHEET 3		
TACKWELD EVERY OTHER STRAND TYPICAL		SIZE: A1		FIG. NO: 97403	
R 2 PLACES		R 2 PLACES		DWG NO: 13226E9464	

40 39 38 37 36 35 34 33

60

48

47

46

45

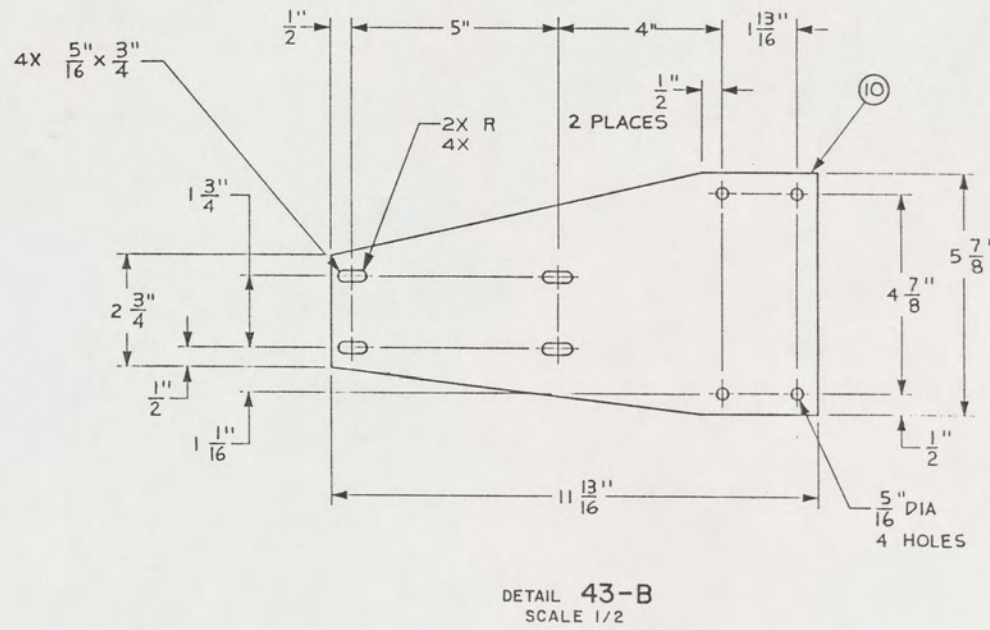
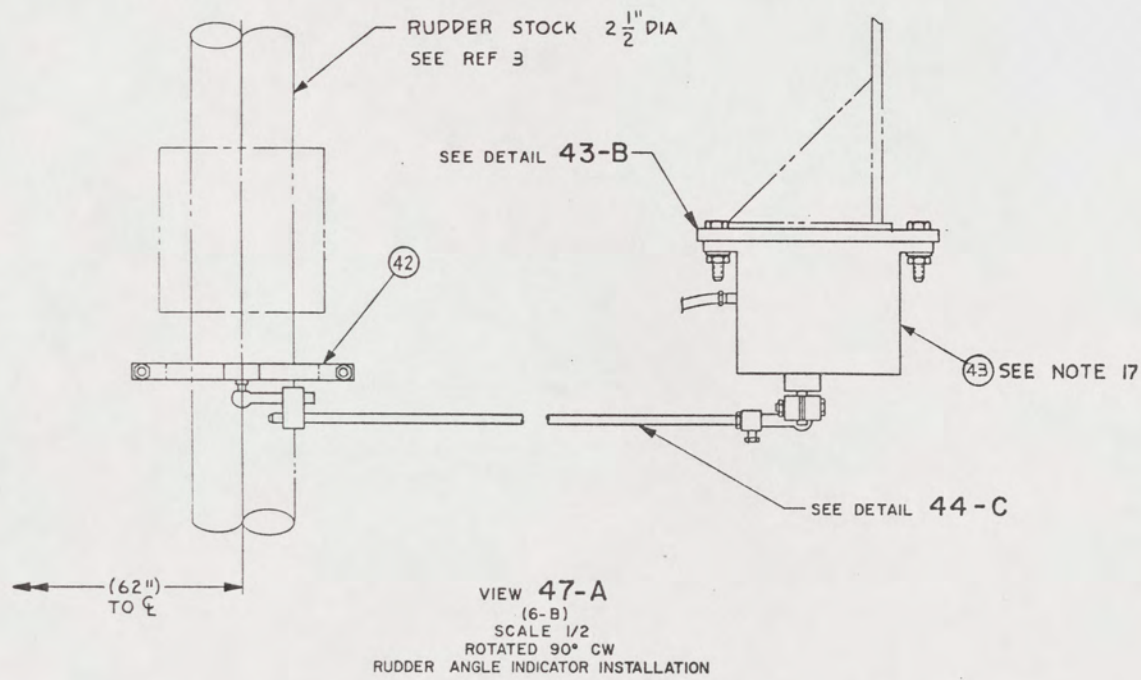
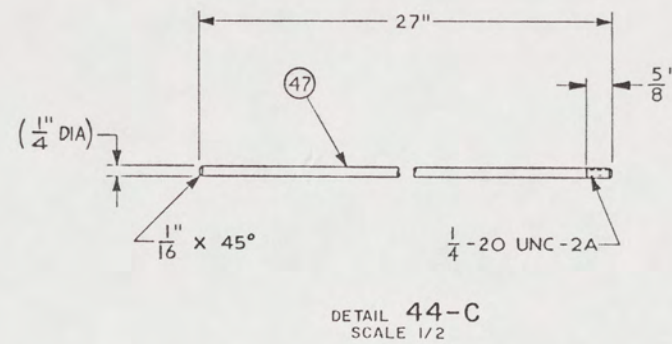
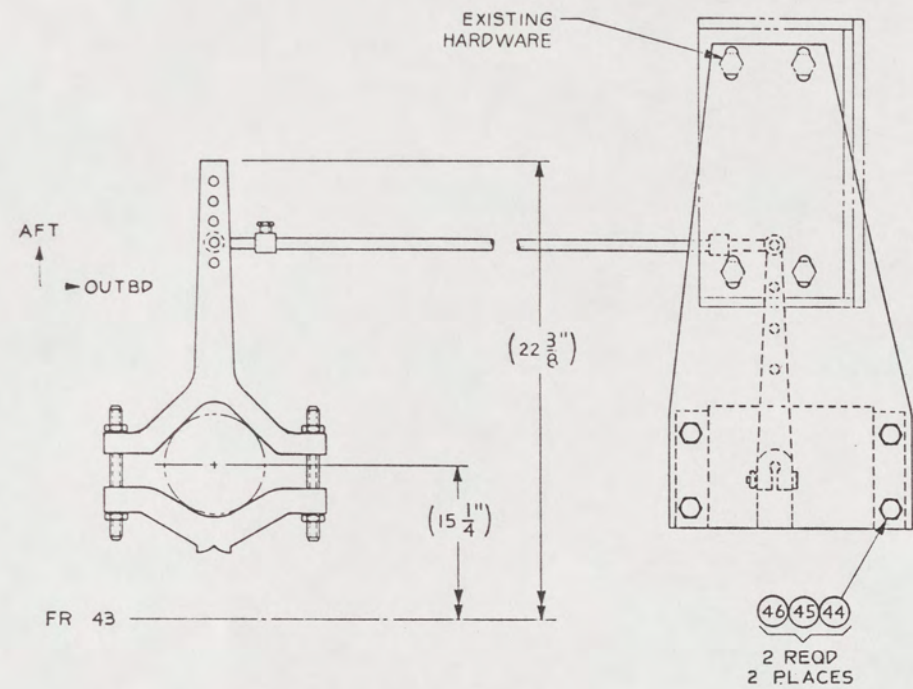
44

43

42

41

REVISIONS				
ZONE	LTR	DESCRIPTION	DATE	APPROVED
A		SEE ECP NO. 90HE3102 AND 90HE3103	20 MAR 88	[Signature]



FIND NO.	CAGE	DWG SIZE	PART OR IDENTIFYING NO.	QTY REQD	NOMENCLATURE OR DESCRIPTION	SPECIFICATION	MATERIAL
UNLESS OTHERWISE SPECIFIED DIM/TOLERANCES ARE: \pm PER IN.							
ONE PLACE (.X) \pm				DRAWN BY RGS/HA			
TWO PLACE (.XX) \pm				DATE 11 JUN 87			
THREE PLACE (.XXX) \pm				CHECKED BY GY PRAO			
ANGLES \pm				DATE 15 MAR 88			
THIRD ANGLE PROJECTION				CONTRACT NO.			
DO NOT SCALE THIS DRAWING							
FOR INTERPRETATION OF DRAWING DDD-STD-100 APPLIES							
REMOVE BURRS AND BREAK SHARP EDGES				DESIGN APPROVAL			
SHARP EDGES TO				DATE 11 JUN 87			
FILLET RADII TO				APPROVED FOR PROCUREMENT			
MATERIAL				DATE 15 MAR 88			
SIZE A1		CAGE 97403		DWG NO. 13226E9464		SHEET 6	

48

47

46

45

44

43

42

41

61