

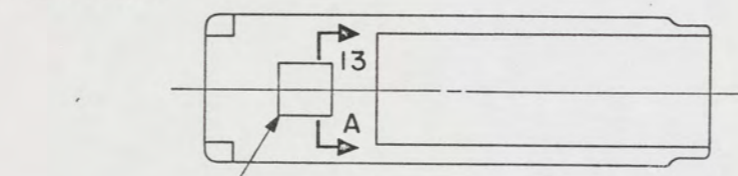
CSK

NOTES:

1. REPAIR ALL PAINT DAMAGED BY THIS INSTALLATION AND PAINT ALL NEW STEEL IN ACCORDANCE WITH U.S. ARMY BULLETIN TB43-0144.
2. EQUIPMENT AND WORKMANSHIP SHALL BE IN ACCORDANCE WITH USCG AND ABS REGULATIONS.
3. SLIGHT DEVIATIONS FROM DIMENSIONS SHOWN ARE PERMISSIBLE TO SUIT ACTUAL CONDITIONS FOUND ABOARD THE VESSEL.
4. MOUNTING HOLE PATTERN SHALL BE TEMPLATED FROM EXISTING MOUNTING PLATE OF RMHS COMPASS. (REF SPERRY INSTALLATION DRAWING NO. 4010716).
5. MATERIAL ORDERED ON THIS DRAWING IS NOT INTENDED TO BE RESTRICTIVE. SUBSTITUTION OF EQUAL QUALITY MATERIAL MAY BE MADE EXCEPT ITEMS MARKED GFE.
6. FIND NO. 8 SHALL CONSIST OF THE FOLLOWING:
 - A. CONTROL HEAD, NO. 2048-M (FOR 3" STROKE), 1 REQD
 - B. NEUTRAL SAFETY SWITCH (INSTALLED), NO. 2046-0903, 2 REQD
 - C. CONNECTOR KIT, 1/4-28, NO. 2046-0902, 2 REQD
 - D. LABELS, NO. 2046-0015, 2 REQD
 - E. THROTTLE EXTENSION KIT, NO. 2046-0906, 2 REQD.
7. SHUTDOWN HEADS TO BE SALVAGED FROM EXISTING BOAT, SEE REF 2 FOR CONNECTIONS TO ENGINE.
8. COMPONENTS SHOWN BY SOLID, HEAVY LINES ARE NEW, ORDERED AND INSTALLED IN ACCORDANCE WITH THIS DRAWING. PHANTOM LINES INDICATE COMPONENTS EXISTING OR ORDERED ON AND INSTALLED BY DRAWINGS REFERENCED AS NOTED.
9. REMOVE FLAT BAR AND REMAINDER OF (2) ANGLES, 2 PLACES. GRIND AREA FLUSH TO BARE METAL.
10. ENGRAVE LINE AND CHARACTERS .010 MIN DEEP. CHARACTERS TO BE LOCATED APPROXIMATELY AS SHOWN. FILL ENGRAVING WITH BLACK ENAMEL.
11. ALL FABRICATION WELDING AND INSPECTION TO BE IN ACCORDANCE WITH NAVSEA 0900-LP-014-5010, WELD SIZES BASED ON USE OF AWS A5.4, CLASS E3086 ELECTRODES FOR CRES STEEL TO CRES STEEL OR AWS A5.1, CLASS E7018 ELECTRODES FOR LC STEEL TO LC STEEL.
12. MACHINE ONE LEG OF ANGLES, FIND NO. 14, 15 AND 16, TO 5/8 INCH WIDTH. THIS LEG WILL BE THE HORIZONTAL LEG OF THE TWO FRAMES SHOWN ON DETAIL 21-A, SH 3.

REFERENCE DRAWINGS		
NO.	DRAWING NO.	TITLE
1	145-4510932	PILOT HOUSE ARRANGEMENT AND DETAILS
2	13226E9451	LCM 8, MOD-1, ENGINE CONTROL ARRANGEMENT
3	13226E9476	LCM 8, MOD-1, POWER LIGHTING AND IC SYSTEM

SHEETS						STATUS OF REVISIONS			
6	5	4	3	2	ZONE	LTR	DESCRIPTION	DATE	APPROVED
-	-	-	-	-	-	-	A SEE ECP NO. 90HE2102	10 MAR 80	DMS
-	-	-	-	-	-	-	B SEE ECP NO. 90HE3309	14 MAR 81	DMS



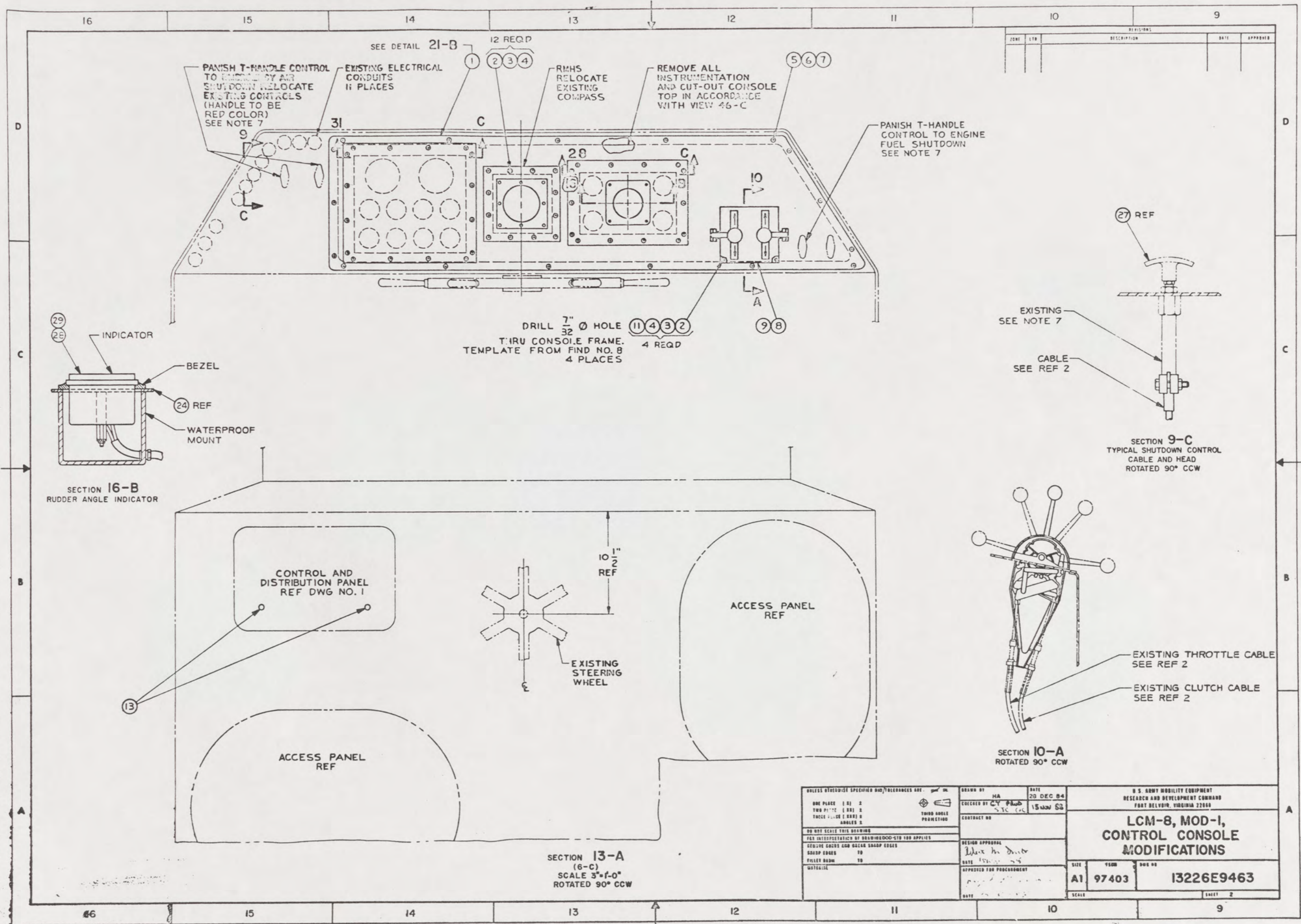
PILOT HOUSE REF
KEY VIEW 5-B
SCALE NONE

YARD	FIND NO.	FSCM	DWG SIZE	PART OR IDENTIFYING NO.	QTY REQD	NOMENCLATURE OR DESCRIPTION	SPECIFICATION	MATERIAL
---	29			MS51960-67	4	SCREW, FLAT HD, NO. 10-32 UNF-2A X 3/4" LG		CRES
---	28			ORD ON REF 3	REF	RUDDER ANGLE INDICATOR		
---	27	86376		C2707	REF	ENGINE SHUT DOWN CONTROL HEAD (PANISH) SEE NOTE 7	COML	COPPER ALY
YARD	26			MS27130-CR133	17	NUT, BLIND RIVET, CSK HD, 1/4"-20 X 11/16" LG		CRES
YARD	25			MS27130-CR128	12	NUT, BLIND RIVET, CSK HD, NO. 10-24 X 5/8" LG		CRES
YARD	24			TYPE 316	1	SHEET, .120 X 11" X 7 1/4"	ASTM A167	CRES
YARD	23			ITEM A, TYPE III, GRADE A	1	SHEET, CLEAR, 12 3/8" X 8 5/8" X 3/16" STK	L-P-391	ACRYLIC
YARD	22			MS24629-46, TYPE D	22	SCREW, TAPPING, THD CUTTING, PAN HD, NO. 10 X 1/2 LG		STL CAD PL
YARD	21			TYPE 316	1	SHEET, .120 X 12 1/2" X 11"	ASTM A167	CRES
YARD	20			TYPE II	AR	ADHESIVE	MM-A-1617	
YARD	19			M1BC510	AR	SHEET, 1/16" STK	ASTM D2000	RUBBER
YARD	18			ITEM A, TYPE III, GRADE A	1	SHEET, CLEAR, 13 7/8" X 12 3/8" X 3/16" STK	L-P-391	ACRYLIC
YARD	17			MS24629-47, TYPE D	30	SCREW, TAPPING, THD CUTTING, PAN HD, NO. 10 X 5/8" LG		STL CAD PL
YARD	16			TYPE 316	2	ANGLE, 3/4" X 3/4" X 1/8" X 13 7/8" LG (SEE NOTE 12)	ASTM A276	CRES
YARD	15			TYPE 316	2	ANGLE, 3/4" X 3/4" X 1/8" X 8 5/8" LG (SEE NOTE 12)	ASTM A276	CRES
YARD	14			TYPE 316	4	ANGLE, 3/4" X 3/4" X 1/8" X 12 3/8" LG (SEE NOTE 12)	ASTM A276	CRES
YARD	13	83330		653	2	HOLE PLUG, SNAP BUTTON, 1/2" HOLE (H. H. SMITH)	COML	STL, N PL
YARD	12				2	PLATE, 3/16 STK	ASTM A36	STEEL
YARD	11			MS35649-204	4	NUT, HEX, NO. 10-24 UNC-2B		CRES
YARD	10				4	PLATE, 3/16 STK	ASTM A36	STEEL
YARD	9			M1BC510	1	SHEET, 1/8 STK	ASTM D2000	RUBBER
GFE	8	38658		SEE NOTE 6	1	TWIN ENG SINGLE LEVER CONTROL HD (KOBELT)	COML	
YARD	7			MS15795-810	17	WASHER, FLAT, .281 ID X .625 OD		CRES
YARD	6			MS35338-139	17	WASHER, LOCK-SPRING, 1/4 NOM SIZE		CRES
YARD	5			MS51957-83	17	SCREW, PAN HD, CRES, 1/4-20 UNC X 1" LG		CRES
YARD	4			MS15795-842	16	WASHER, FLAT, .219 ID X .500 OD		CRES
YARD	3			MS35338-138	16	WASHER, LOCK-SPRING, NO. 10 NOM SIZE		CRES
YARD	2			MS51957-67	16	SCREW, PAN HD, CRES, NO. 10-24 UNC-2A X 1" LG		CRES
YARD	1			TYPE 316	1	SHEET, 11 GA (.1200)	ASTM A167	CRES

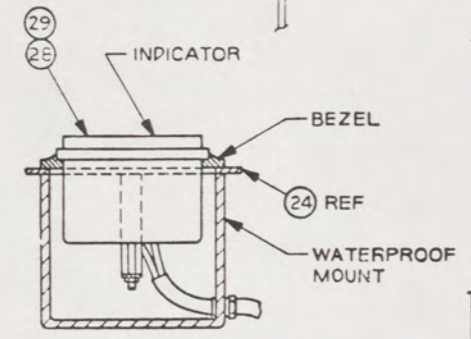
THIS DRAWING APPLIES TO HULL NUMBERS 8540 THROUGH 8560 AND 8580 THROUGH 8618 ONLY

PARTS LIST		U.S. ARMY	
UNLESS OTHERWISE SPECIFIED DIM/TOLERANCES ARE: .0005 IN. ONE PLACE (.I) ± — TWO PLACE (.II) ± — THREE PLACE (.III) ± — ANGLES ± —	THIRD ANGLE PROJECTION	DRAWN BY RJE/HA CHECKED BY C.T. RAB SJC/CC	DATE 28 DEC 84 15 NOV 88
DO NOT SCALE THIS DRAWING FOR INTERPRETATION OF DRAWING 000-STD-100 APPLIES REMOVE BURRS AND SHARP EDGES TO TO BREAK SHARP EDGES FILLET RADIUS TO TO		CONTRACT NO.	
DESIGN APPROVAL		APPROVED FOR PROCUREMENT	
DATE 17 MAR 88		DATE 15 MAR 88	
MATERIAL		SIZE A1	FSCM 97403
		DWG NO. 13226E9463	
		SCALE 1/2	SHEET 1 OF 6

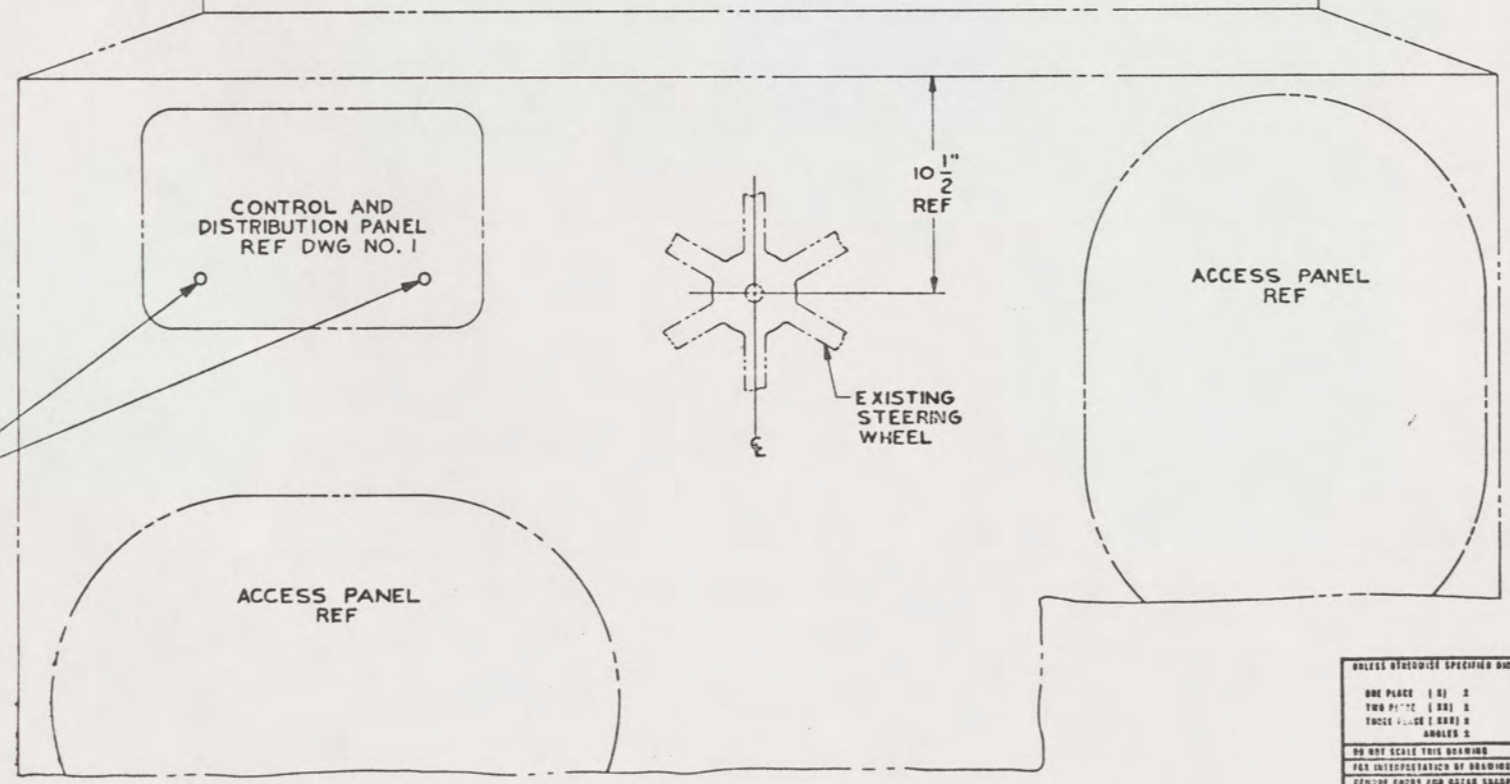
50



REVISIONS				
NO.	DATE	DESCRIPTION	BY	APP'D

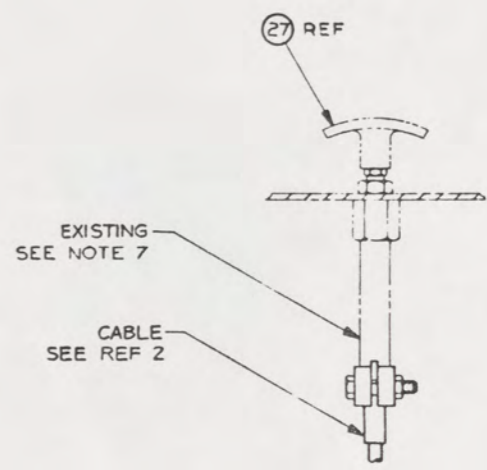


SECTION 16-B
RUDDER ANGLE INDICATOR

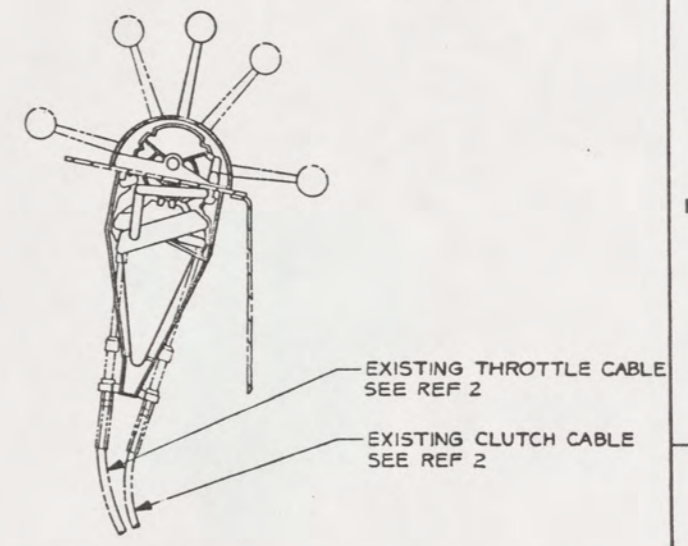


SECTION 13-A
(6-C)
SCALE 3"-0"
ROTATED 90° CCW

DRILL $\frac{7}{32}$ Ø HOLE
T.I.R.U CONSOLE FRAME.
TEMPLATE FROM FIND NO. B
4 PLACES



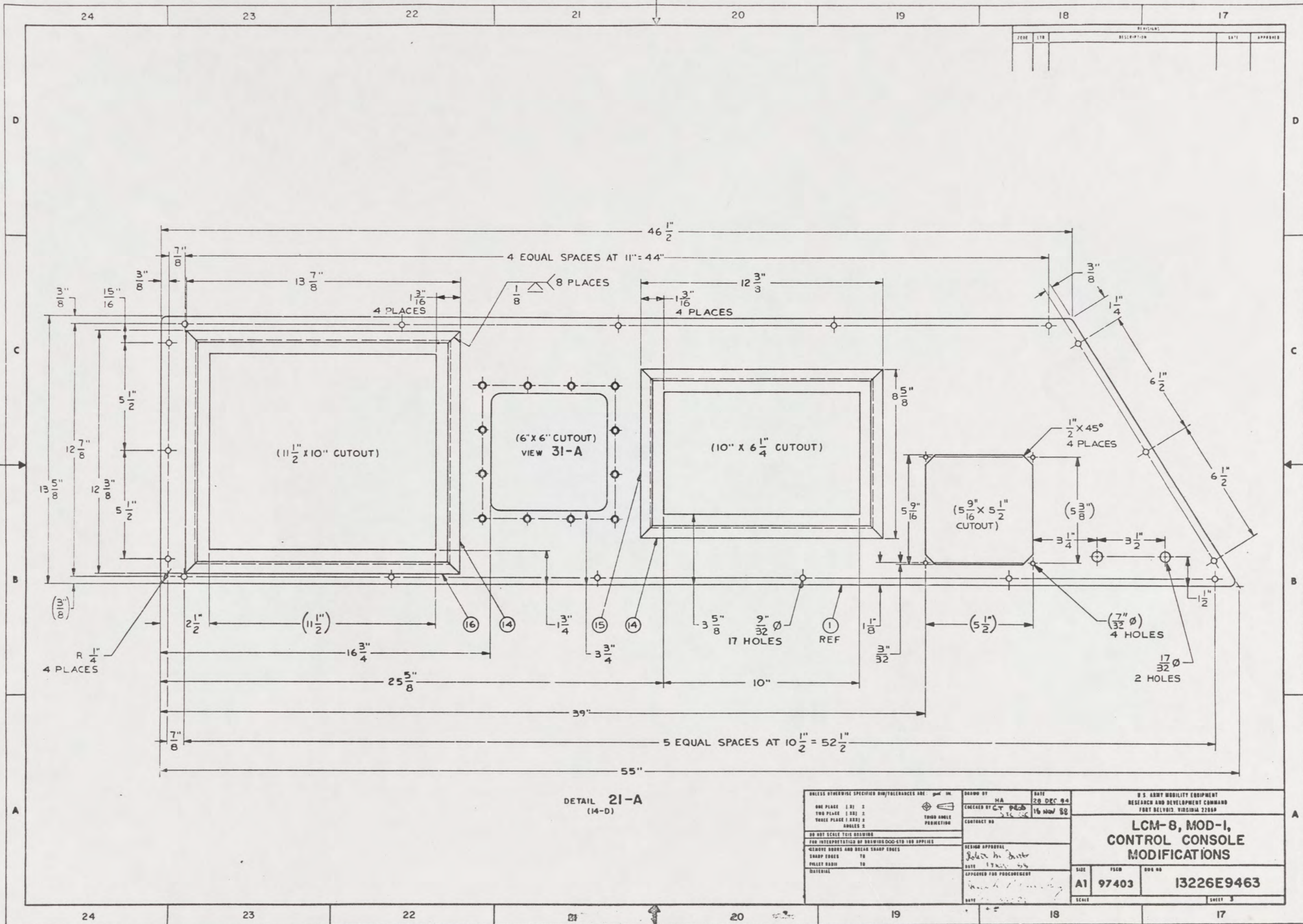
SECTION 9-C
TYPICAL SHUTDOWN CONTROL
CABLE AND HEAD
ROTATED 90° CCW



SECTION 10-A
ROTATED 90° CCW

UNLESS OTHERWISE SPECIFIED DIM/TOLERANCES ARE:		DRAWN BY	DATE	U.S. ARMY MOBILITY EQUIPMENT RESEARCH AND DEVELOPMENT COMMAND FORT BELVOIR, VIRGINIA 22060	
ONE PLACE (1.0)	2	MA	20 DEC 84	<p>LCM-8, MOD-1, CONTROL CONSOLE MODIFICATIONS</p>	
TWO PLACES (1.00)	2	COLLECTED BY	15 NOV 83		
THREE PLACES (1.000)	3	THIRD ANGLE PRACTICE	CONTRACT NO.	<p>SIZE: A1 YOM: 97403 DOW NO: 13226E9463</p>	
DO NOT SCALE THIS DRAWING	DESIGN APPROVAL		DATE		
FOR INTERPRETATION OF DRAWING/DOO-STD 100 APPLIES	APPROVED FOR PROCUREMENT		DATE		
REMOVE SHARP EDGES AND BREAK SHARP EDGES	DATE		SCALE		
SHARP EDGES TO	DATE		SHEET 2		
FULLY DIMEN TO	DATE				
DATETIME	DATE				

51



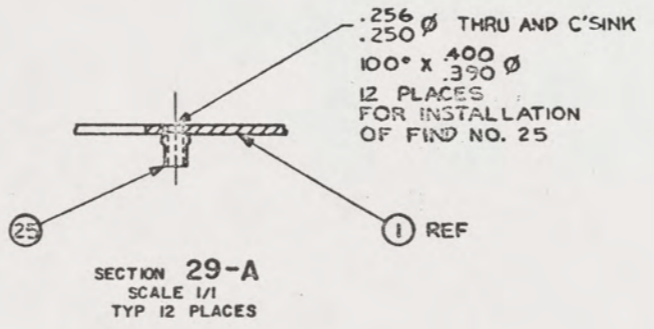
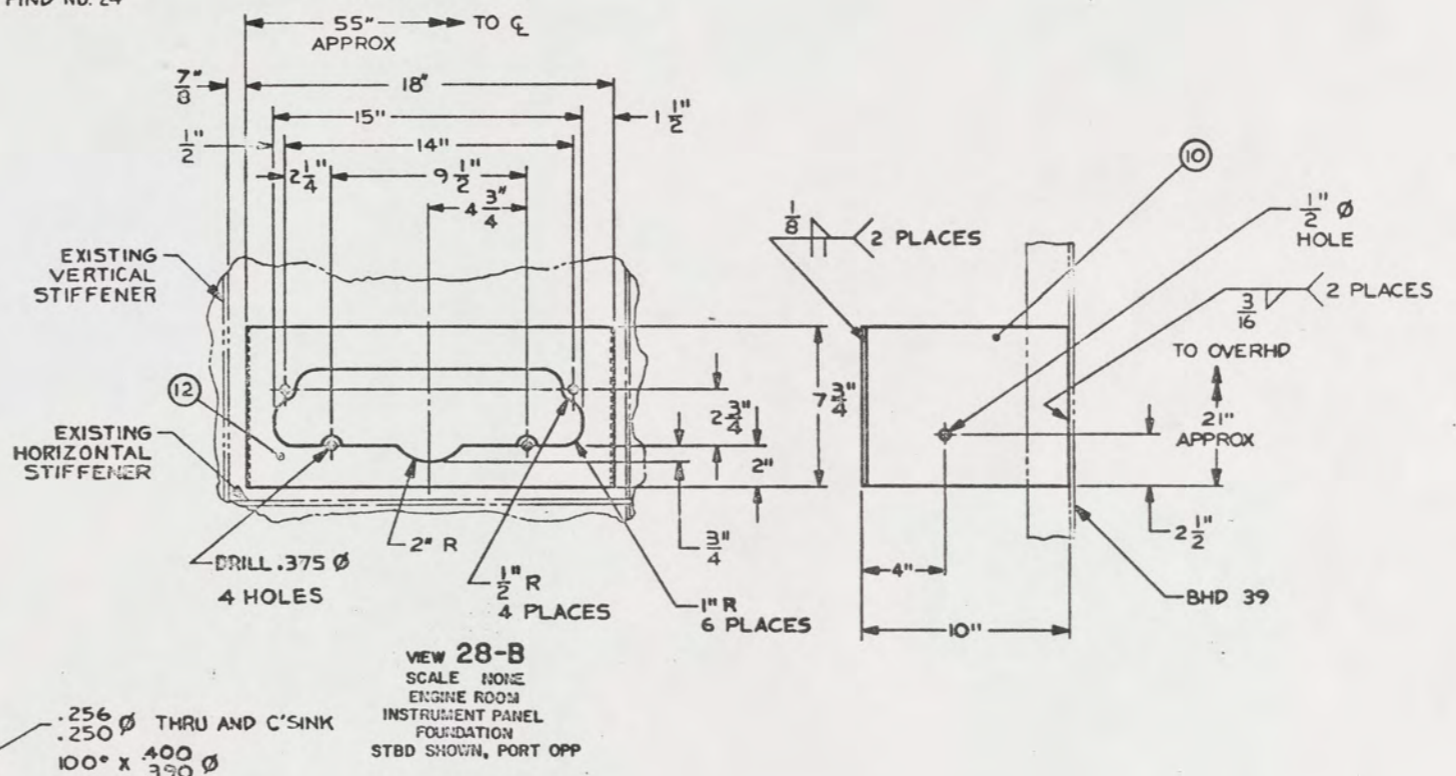
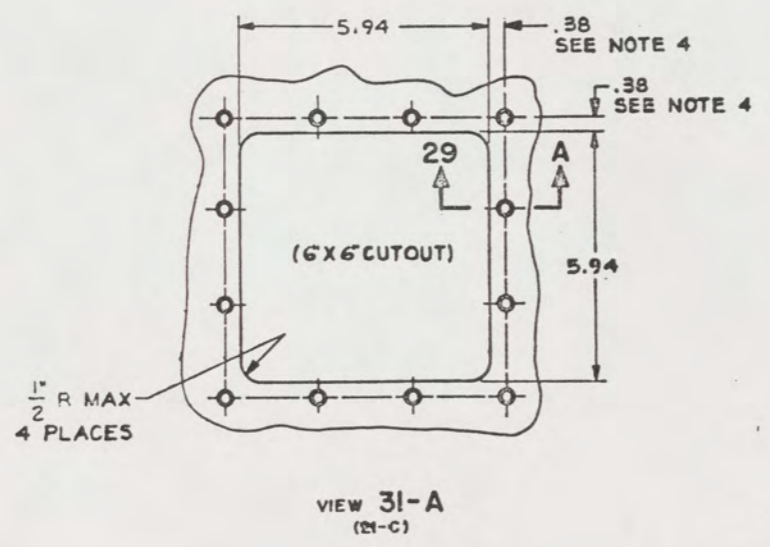
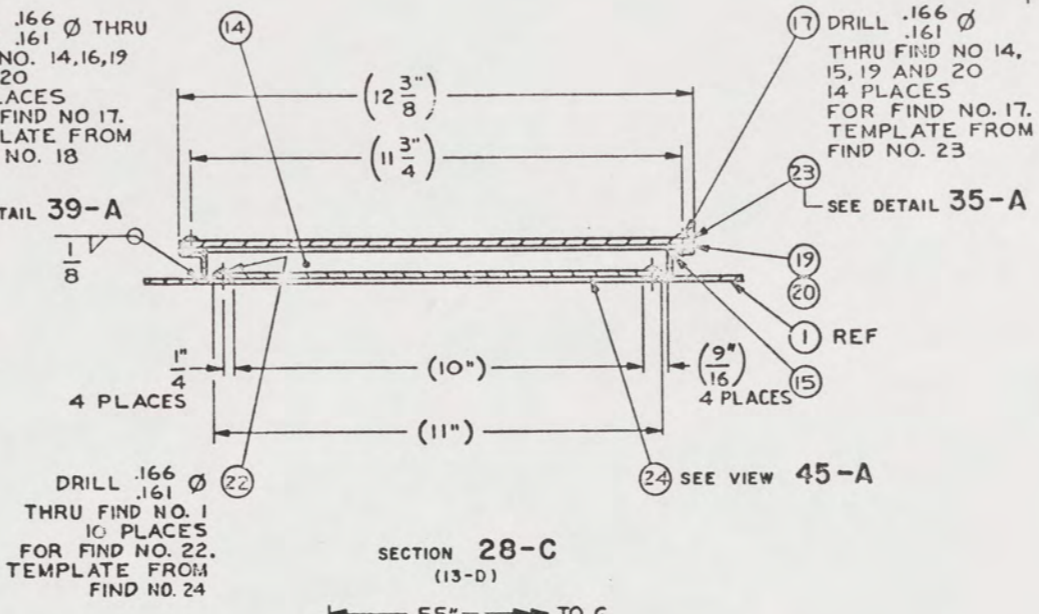
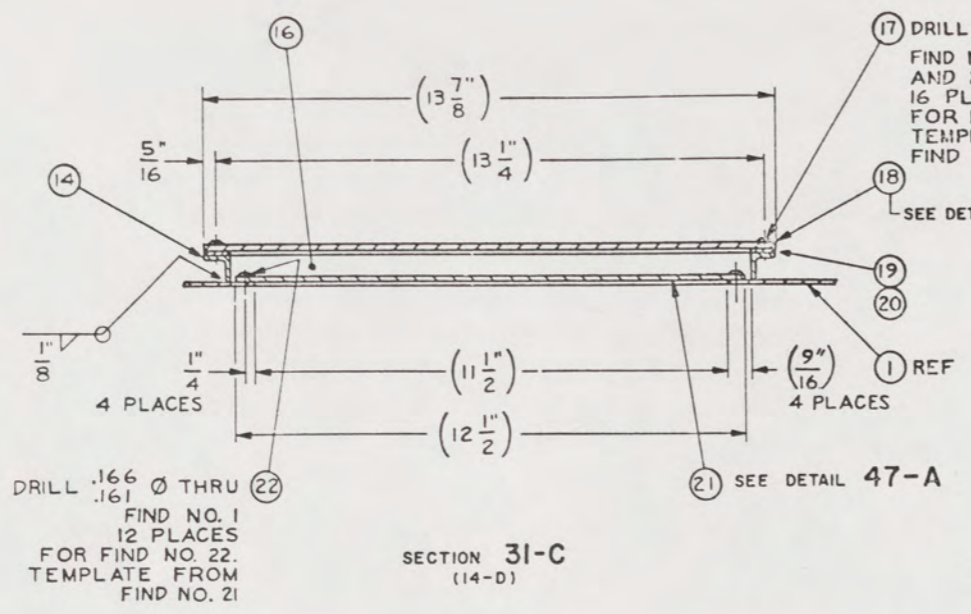
DETAIL 21-A
(14-D)

UNLESS OTHERWISE SPECIFIED DIM/TOLERANCES ARE: $\frac{1}{16}$ IN.	DRAWN BY: H.A.	DATE: 28 DEC 84
ONE PLACE (1X) 5	CHECKED BY: [Signature]	DATE: 16 Nov 88
TWO PLACE (2X) 2	CONTRACT NO:	
THREE PLACE (3X) 2	DESIGN APPROVAL: [Signature]	
FOUR PLACE (4X) 2	DATE: 17 Nov 88	
SHARPER 2	APPROVED FOR PRODUCTION: [Signature]	
DO NOT SCALE THIS DRAWING	DATE: 16 Nov 88	
FOR INTERPRETATION OF DIMENSIONS SEE THE APPENDIX		
REMOVE BURRS AND BREAK SHARP EDGES		
SHARP EDGES TO		
POCKET RADII TO		
MATERIAL		

U.S. ARMY MOBILITY EQUIPMENT RESEARCH AND DEVELOPMENT COMMAND FORT BELVOIR, VIRGINIA 22060		
LCM-8, MOD-1, CONTROL CONSOLE MODIFICATIONS		
SHEET: A1	PLCN: 97403	DOC NO: 13226E9463
SCALE:		SHEET: 3

52

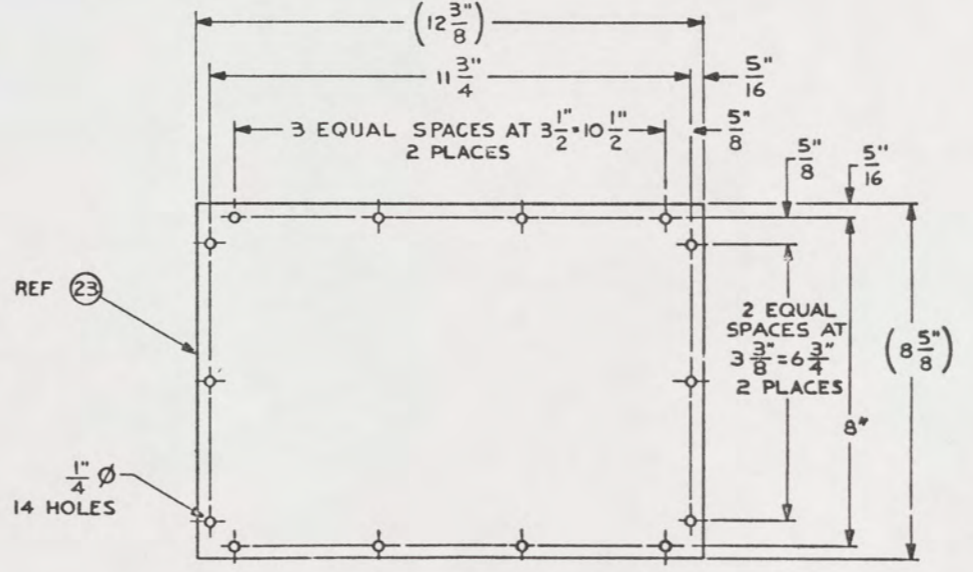
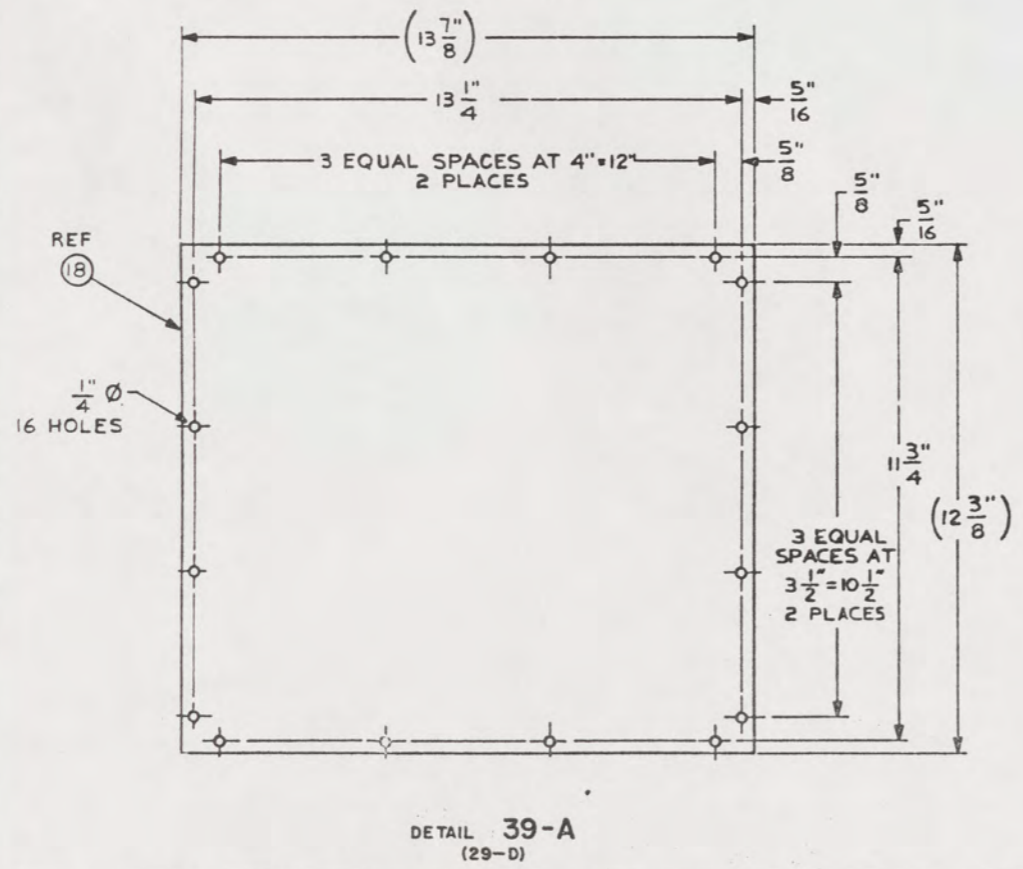
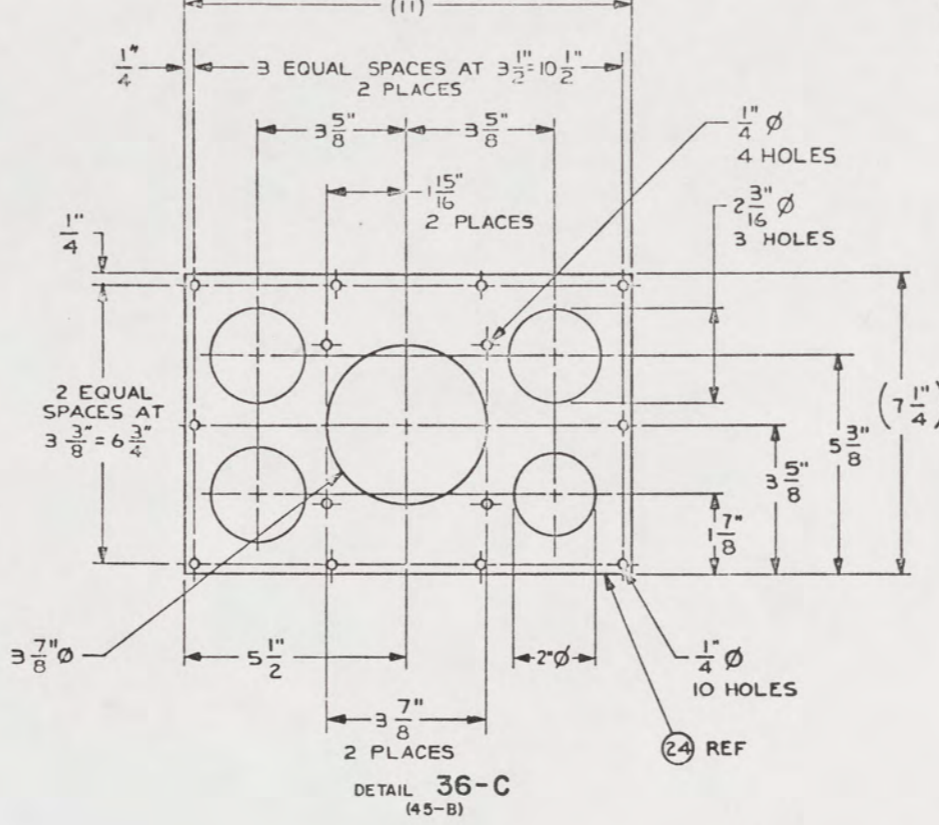
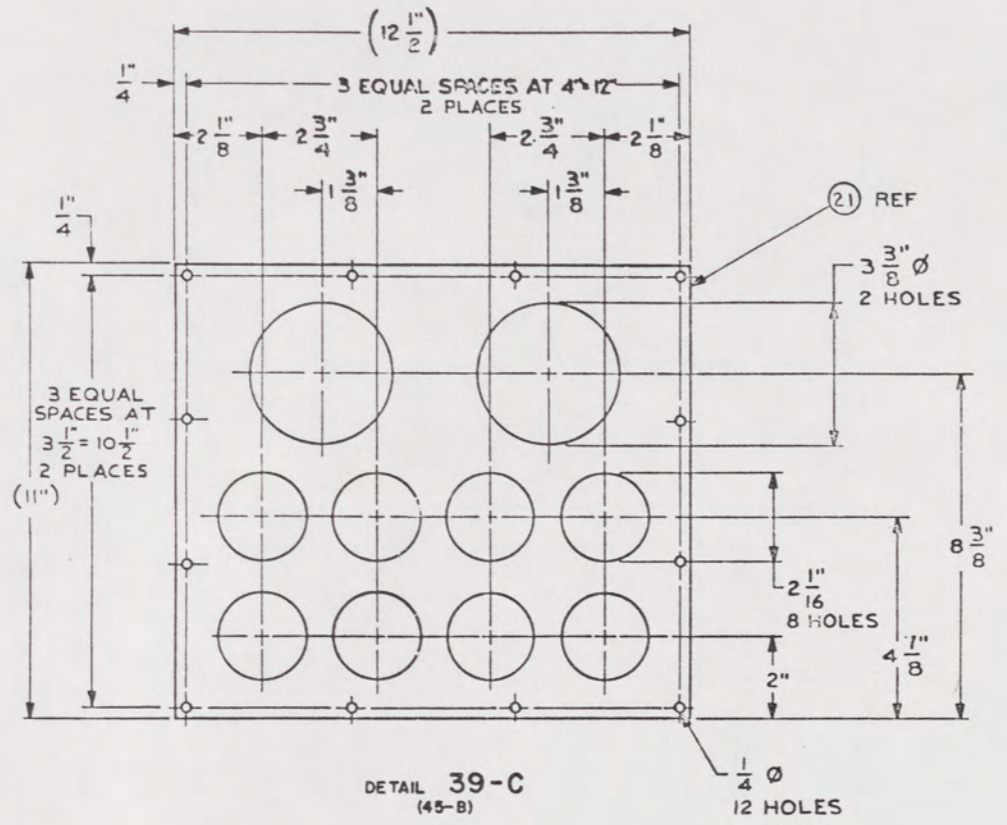
REVISIONS				
ZONE	LTR	DESCRIPTION	DATE	APPROVED



UNLESS OTHERWISE SPECIFIED DIM/TOLERANCES ARE: 3RD IN. ONE PLACE (.1) ± TWO PLACE (.01) ± THREE PLACE (.001) ± ANGLES ±	DESIGNED BY: MA CHECKED BY: G.T. PEARSON DATE: 15 NOV 59	U.S. ARMY MOBILITY EQUIPMENT RESEARCH AND DEVELOPMENT COMMAND FORT BELVOIR, VIRGINIA 22060	
	CONTRACT NO: DESIGN APPROVAL: <i>Robert M. Dwyer</i> DATE: 15 NOV 58	LCM-8, MOD-1, CONTROL CONSOLE MODIFICATIONS	
	APPROVED FOR PROCUREMENT: <i>Joseph A. Wierch</i> DATE: 15 NOV 58	SCALE: A1 FROM: 97403 SHEET: 4	DRAWING NO.: 13226E9463

53

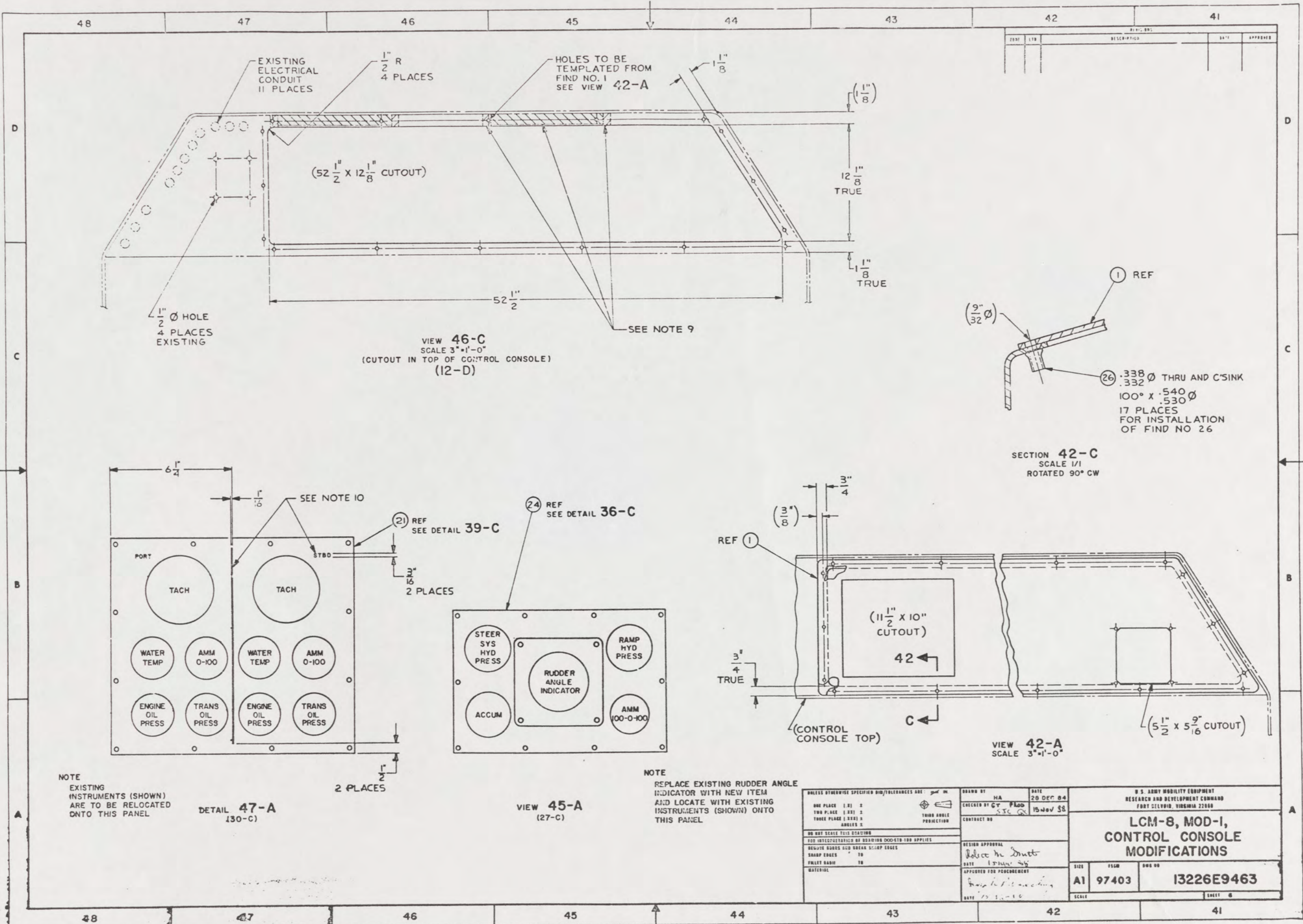
ZONE		LTR		DESCRIPTION	DATE	APPROVED



DETAIL 35-A (26-D)

UNLESS OTHERWISE SPECIFIED DIM/TOLERANCES ARE: $\frac{1}{16}$ IN.	DRAWN BY: HA	DATE: 28 DEC 84	U.S. ARMY MOBILITY EQUIPMENT RESEARCH AND DEVELOPMENT COMMAND FORT BELVOIR, VIRGINIA 22060
ONE PLACE (.01) 3 TWO PLACE (.001) 2 THREE PLACE (.0001) 2 FOUR PLACE (.00001) 2 HOLEES 2	ENGINEERED BY: CF, PLOD, SJC, GEL	CONTRACT NO:	
DO NOT SCALE THIS DRAWING	DESIGN APPROVAL: Robert M. Smith	DATE: 17 JAN 85	LCM-8, MOD-1, CONTROL CONSOLE MODIFICATIONS
FOR MECHANICALS: BY DRAWING DDD STD 100 APPLIES INCLUDE DIMS AND DEKIN SHARP EDGES SHARP EDGES TO FILLET RADIUS TO	APPROVED FOR PRODUCTION: Joseph R. ...	DATE: 15 JAN 85	
MATERIAL:	SIZE: A1	PSCN: 97403	DWG NO: 13226E9463
	SCALE:		SHEET: 5

57



DATE	BY	DESCRIPTION	DATE	APPROVED

VIEW 46-C
SCALE 3"=1'-0"
(CUTOUT IN TOP OF CONTROL CONSOLE)
(12-D)

SECTION 42-C
SCALE 1/1
ROTATED 90° CW

DETAIL 47-A
(30-C)

VIEW 45-A
(27-C)

VIEW 42-A
SCALE 3"=1'-0"

NOTE
EXISTING INSTRUMENTS (SHOWN) ARE TO BE RELOCATED ONTO THIS PANEL

NOTE
REPLACE EXISTING RUDDER ANGLE INDICATOR WITH NEW ITEM AND LOCATE WITH EXISTING INSTRUMENTS (SHOWN) ONTO THIS PANEL

ONE PLACE (1.0) ±	TWO PLACE (1.00) ±	THREE PLACE (1.000) ±	ANGLES ±
DO NOT SCALE THIS DRAWING			
FOR INTERPRETATION BY READING 000-000-100 APPLIES			
REMOVE BORDERS AND BREAK SCRAP EDGES			
SHARP EDGES TO			
FILLET RADIUS TO			
MATERIAL			
DROWN BY HA	DATE 20 DEC 84	U.S. ARMY MOBILITY EQUIPMENT RESEARCH AND DEVELOPMENT COMMAND FORT CULVER, VIRGINIA 22060	
CHECKED BY C.T. Ploos	DATE 15 Nov 88	LCM-8, MOD-1, CONTROL CONSOLE MODIFICATIONS	
DESIGN APPROVAL <i>Robert M. Smith</i>	DATE 17 Nov 88	SIZE A1	FIG NO 97403
APPROVED FOR PROCUREMENT <i>Robert M. Smith</i>	DATE 12 1 88	DWG NO 13226E9463	
SCALE		SHEET 6	

55