

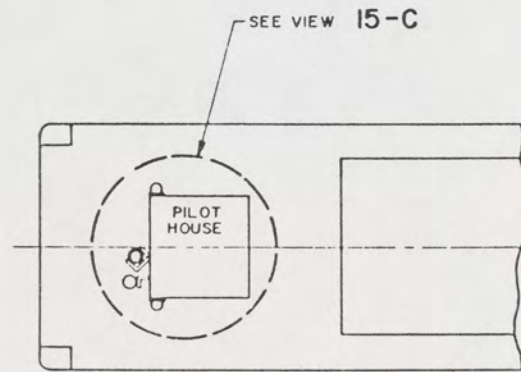
NOTES

1. ALL FABRICATION WELDING AND INSPECTION TO BE IN ACCORDANCE WITH NAJSEA 0960-LP-014-5010.
2. TEMPLATE ALL WORK FROM LCM-8 AND EQUIPMENT.
3. EQUIPMENT AND WORKMANSHIP SHALL BE IN ACCORDANCE WITH USCG, AND ABS REGULATIONS.
4. REPAIR ALL PAINT DAMAGED BY THIS INSTALLATION AND PAINT ALL NEW STEEL IN ACCORDANCE WITH U.S. ARMY TECHNICAL BULLETIN TB43-0144.
5. MATERIAL ORDERED ON THIS DRAWING IS NOT INTENDED TO BE RESTRICTIVE. SUBSTITUTION OF EQUAL QUALITY MATERIAL MAY BE MADE EXCEPT ITEMS MARKED GFE.
6. SLIGHT DEVIATIONS FROM DIMENSIONS SHOWN ARE PERMISSIBLE TO SUIT ACTUAL CONDITIONS FOUND ABOARD THE VESSEL.
7. COMPONENTS SHOWN BY SOLID HEAVY LINES ARE NEW AND ARE TO BE INSTALLED IN ACCORDANCE WITH THIS DRAWING. PHANTOM LINES INDICATE EXISTING COMPONENTS INSTALLED BY DRAWINGS REFERENCED AS NOTED.
8. PROJECTING CORNERS AND EDGES TO BE WELL ROUNDED OR PADDED TO PROTECT PERSONNEL.
9. FIND NO. 5 AND 8 SHALL BE BOUGHT WITH LOCKING RING, NO. 8-3514-011.
10. PROVIDE 2 HOLES IN FIND NO. 17, 18 AND 19. 1/8" DIAMETER, TEMPLATE FROM BRACKET, PART OF FIND NO. 1 THRU 4.
11. SECURE ELECTRICAL CABLE TO MAST SECTIONS WITH CABLE TIES, FINDER NO. 28.
12. EXISTING LIGHT MOUNTING PLATFORMS MAY VARY BY 90° TO THE DOWN ON THIS DRAWING. ADDED PLATFORMS SHALL BE POSITIONED OPPOSITE TO EXISTING PLATFORMS.
13. FIND NO. 23 SHALL BE AS FOLLOWS:  
TOGGLE PIN, 1/4" DIA X 4" GRIP, CRES. WITH BRASS FLAT TOGGLE.  
CRES S HOOK AND CHAIN ASSY 8" LONG AND ALUMINUM CLIP EYE.  
OBTAIN FROM RAILWAY SPECIALTIES CORP.
14. SOCKET AND PIN, FIND NO. 20 THRU 23, ARE NECESSARY ONLY WHERE THE RMHS BRACKET ABOVE THE PILOT HOUSE HAS NOT BEEN MODIFIED. BOAT CHECK TO SEE IF CENTER EXTENSION CLEARS WHEN LOCATED IN THE EXISTING SOCKET BEFORE MAKING THIS CHANGE. IF SOCKET IS TO BE REVISED, REMOVE EXISTING SOCKET.
15. CABLE PENETRATION INTO LIGHTS, FIND NO. 1 THRU 5 AND 8, TO BE MADE WATERPROOF, USING A SUITABLE SEALING COMPOUND.

REFERENCE DRAWINGS APPLICABLE TO HULL NUMBERS 8540 THRU 8560 AND 8580 THRU 8618		
NO.	DRAWING NO.	TITLE
1	13222E2581	MAIN MAST, DETAILS & ARRANGEMENT
2	145-4510932	PILOT HOUSE, DETAILS & ARRANGEMENT
3	302-4510953	POWER, LIGHTING, I.C. SYSTEM SCHEM
4	125-4510928	MAST DETAILS
5	125-4510927	MAST ARRANGEMENT

REFERENCE DRAWINGS APPLICABLE TO HULL NUMBERS 8520 THRU 8539		
NO.	DRAWING NO.	TITLE
1	13222E2581	MAIN MAST, DETAILS & ARRANGEMENT
2	145-2534234	PILOT HOUSE, DETAILS & ARRANGEMENT
3	302-2534232	POWER, LIGHTING, I.C. SYSTEM SCHEM
4	125-2534240	MAST DETAILS
5	125-2534239	MAST ARRANGEMENT

SHEETS				STATUS OF REVISIONS	
NO.	DATE	DESCRIPTION	BY	APPROVED	
4					
3					
2					
1					



KEY VIEW 5-B  
SCALE NONE

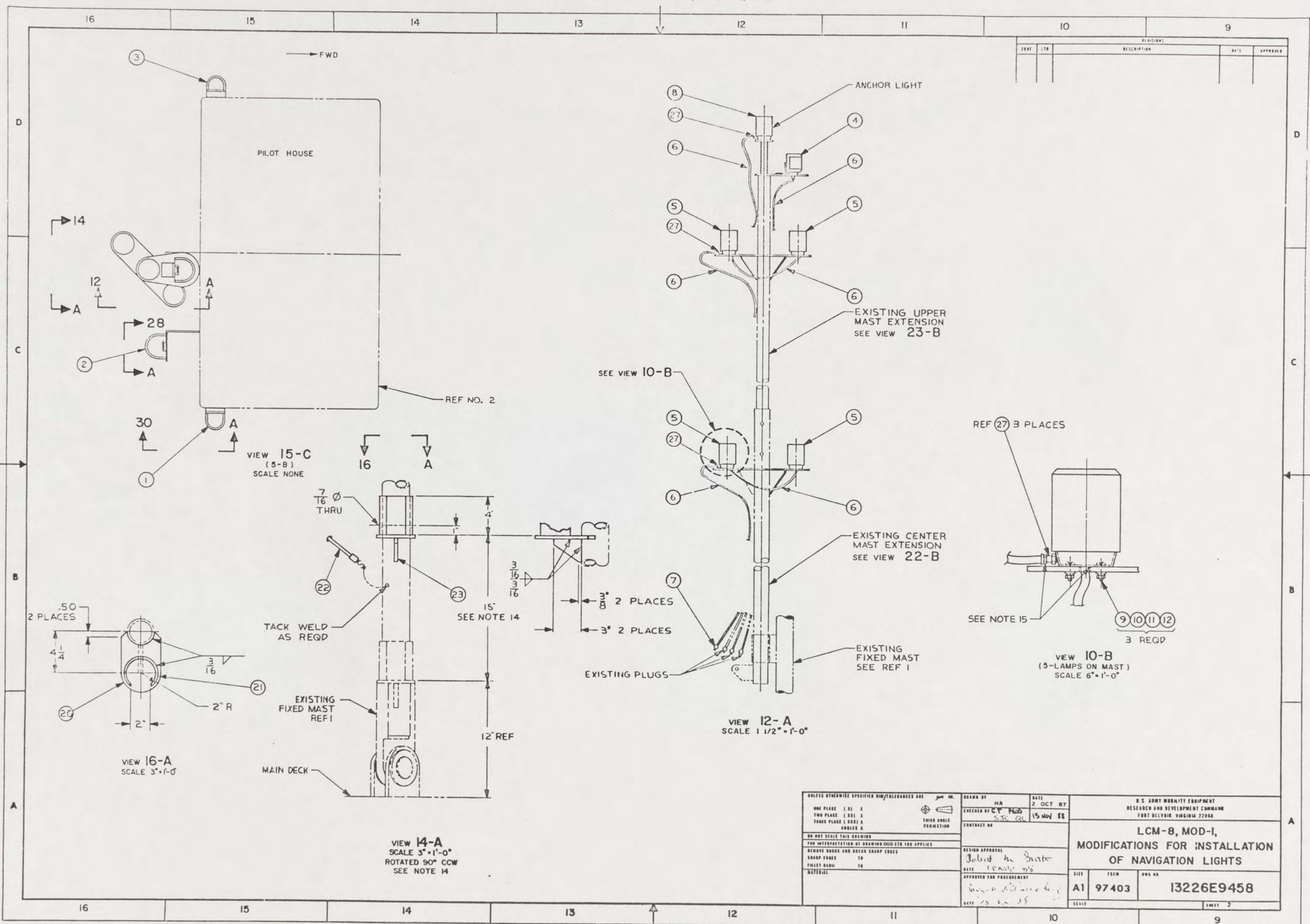
YARD	NO.	QTY	DESCRIPTION	UNIT	COMPL	MATERIAL
YARD	28	56501	TY 524HX	AR		PLASTIC
YARD	27	61204	R 3514-002	3		PLASTIC
YARD	26		M18C510	2		RUBBER
YARD	25		M51922-2	6		CRES
YARD	24		M535307-306	6		CRES
YARD	23		6061-T6	1		AL ALY
YARD	22	86700	SEE NOTE 13	1		VARIOUS
YARD	21		6061-T6	1		AL ALY
YARD	20		6061-T6	1		AL ALY
YARD	19		6061-T6	1		AL ALY
YARD	18			1		STEEL
YARD	17			2		STEEL
YARD	16		6061-T6	1		AL ALY
YARD	15		6061-T6	3		AL ALY
YARD	14		6061-T6	3		AL ALY
YARD	13		6061-T6	1		AL ALY
YARD	12		M535640-284	23		CRES
YARD	11		M535338-137	23		CRES
YARD	10		M515795-807	23		CRES
YARD	9		M51957-47	23		CRES
GFE	8	61204	33506-033	1		SEE NOTE 9
YARD	7		PT NQ42726/50-001	1		MIL-R-2726-50
YARD	6		DHOF-3	AR		MIL-C-915 6
GFE	5	61204	33506-233	4		SEE NOTE 9
GFE	4	61204	33501-003	1		
GFE	3	61204	33504-203	1		
GFE	2	61204	33502-003	1		
GFE	1	61204	33505-103	1		

UNLESS OTHERWISE SPECIFIED DIM/TOLERANCES ARE: $\pm$ 0.005		DRAWN BY: HA	DATE: 2 OCT 87	U.S. ARMY MOBILITY EQUIPMENT RESEARCH AND DEVELOPMENT COMMAND FORT BELVOIR, VIRGINIA 22060
ONE PLACE (1.0) ±	TWO PLACE (0.01) ±	CHECKED BY: ZT 0435 SJC (C)	15 NOV 88	
THREE PLACE (0.001) ±	FOUR PLACE (0.0001) ±	CONTRACT NO.		LCM-8, MOD-1, MODIFICATIONS FOR INSTALLATION OF NAVIGATION LIGHTS
NO DIM SCALE THIS DRAWING	FOR INTERPRETATION OF DIMENSIONS SEE 100 APPLIES	DESIGN APPROVAL: John H. Smith	DATE: 17 NOV 87	
REMOVE BORDERS AND BREAK SHARP EDGES	SHARP EDGES -- TO --	APPROVED FOR PURCHASE:	DATE: 17 NOV 87	SIZE: A1
FILLET RADIUS -- TO --	MATERIAL			FIG: 97403
				NO: 13226E9458
				SCALE: AS NOTED
				SHEET 1 OF 4

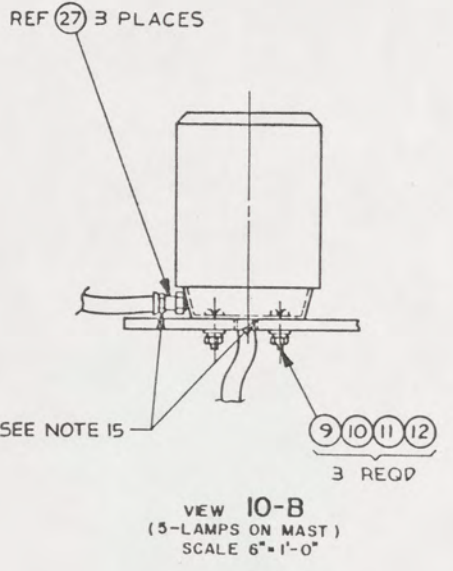
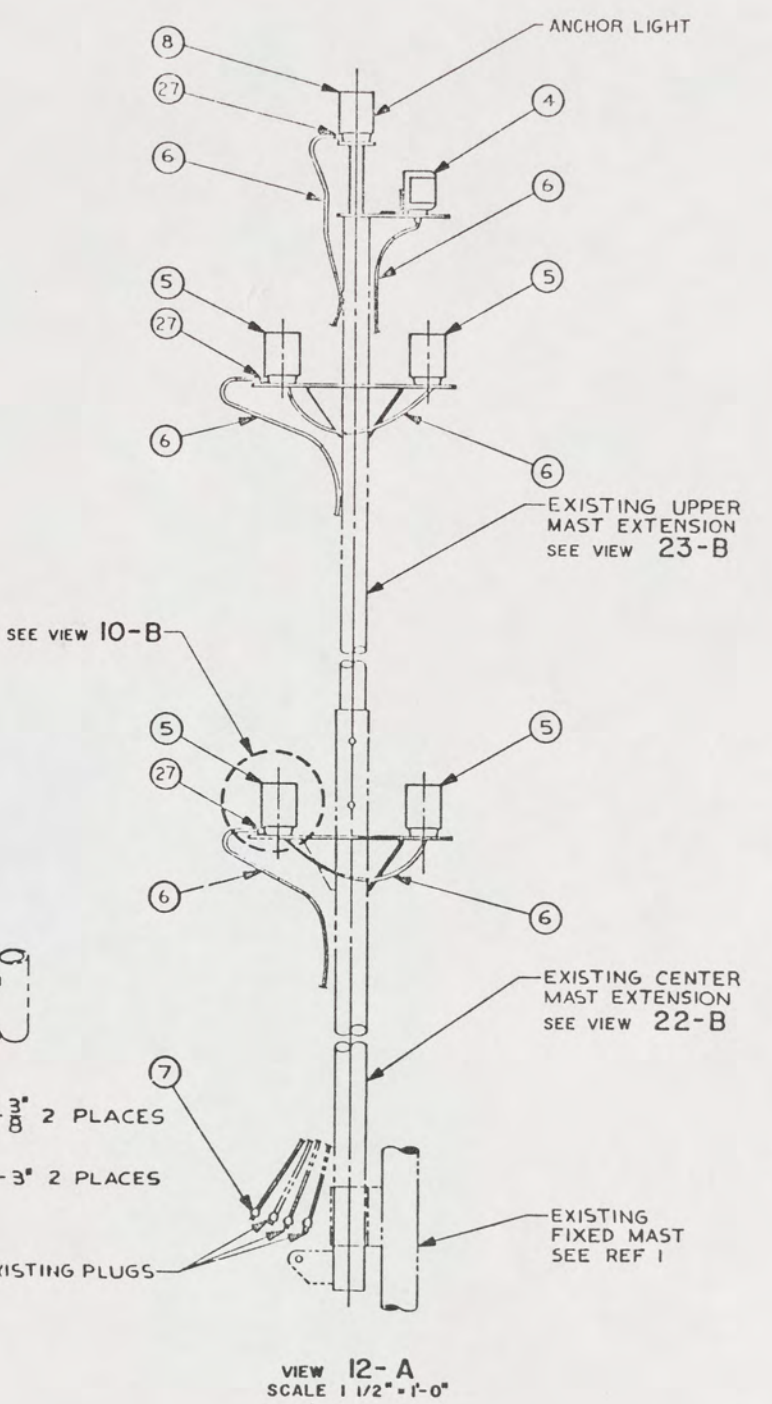
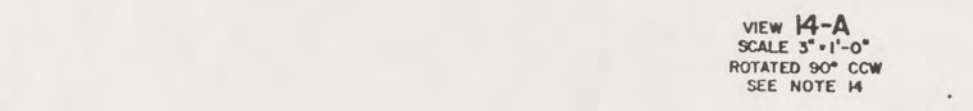
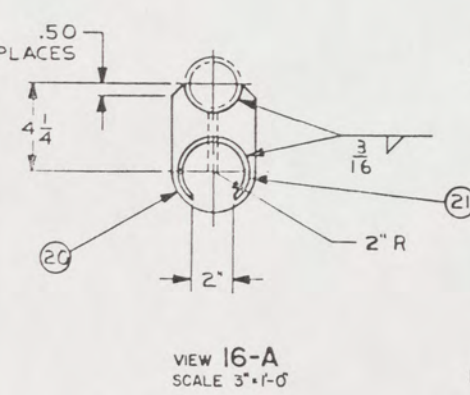
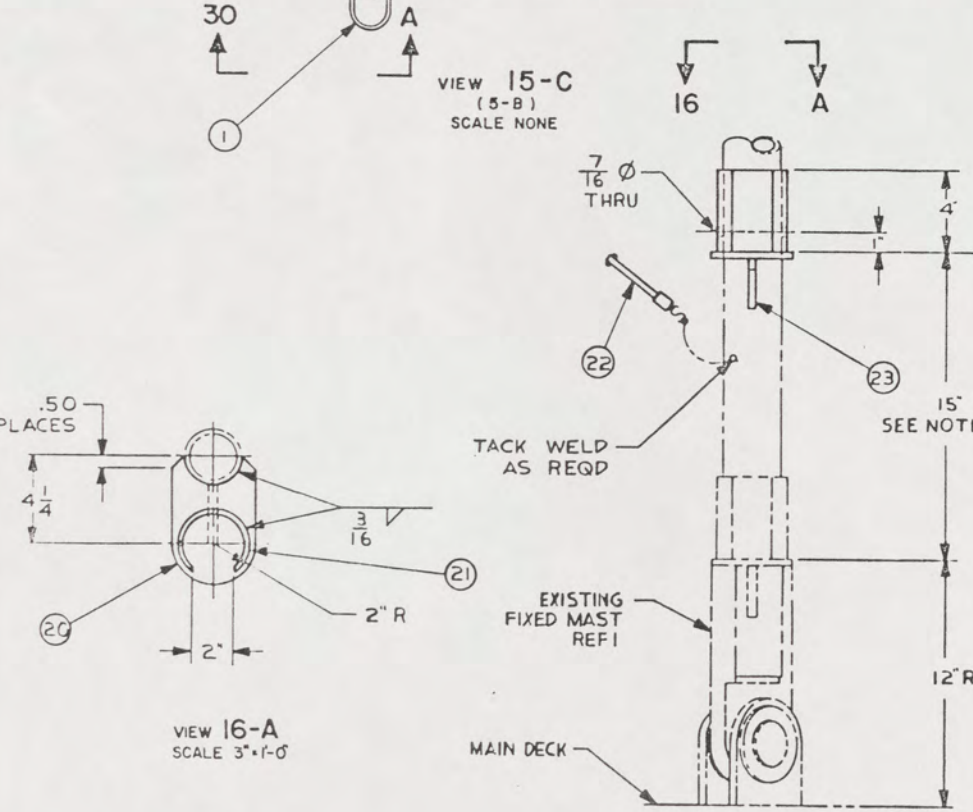
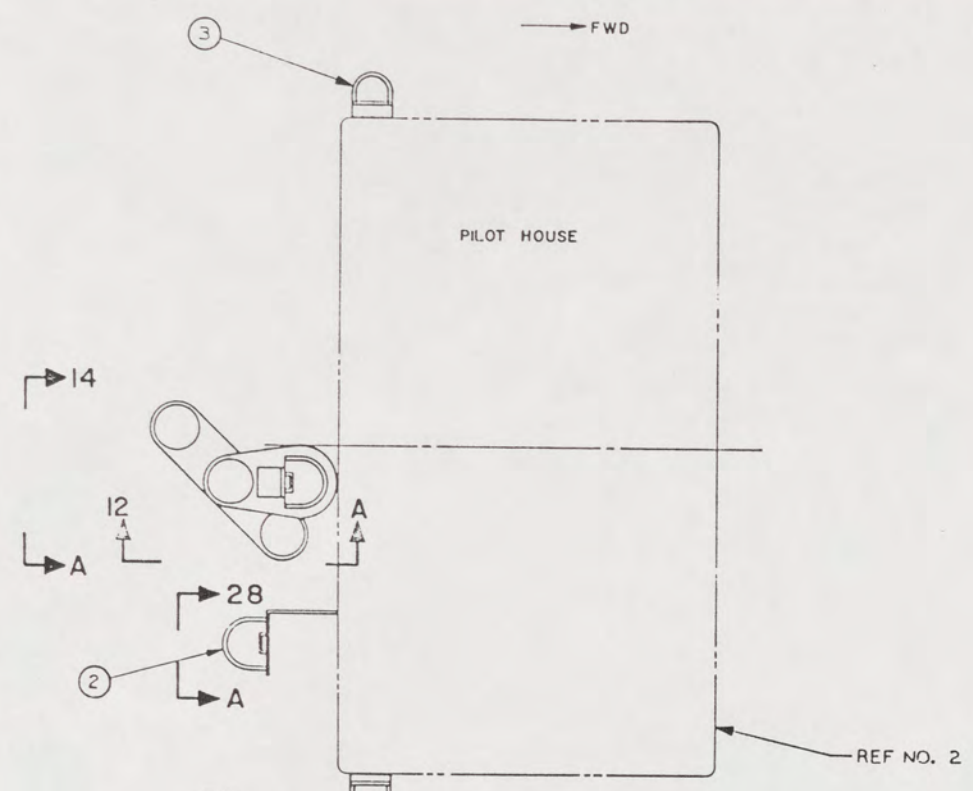
THIS DRAWING APPLIES  
TO HULL NUMBERS  
8520 THROUGH 8560 AND  
8580 THROUGH 8618 ONLY

32





REVISIONS			
NO.	DATE	DESCRIPTION	APPROVED



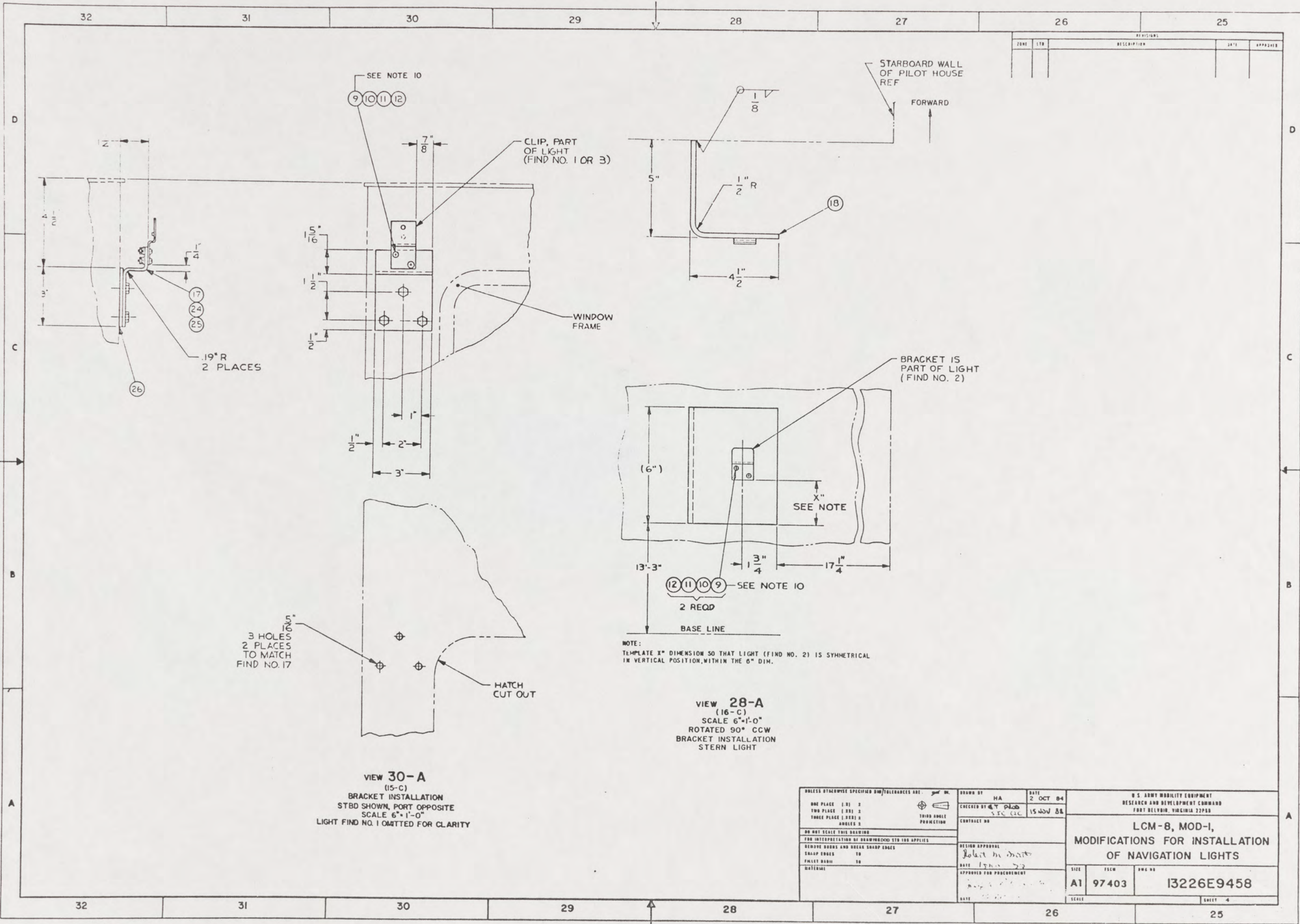
UNLESS OTHERWISE SPECIFIED DIM/TOLERANCES ARE		DRAWN BY	DATE	U.S. ARMY MOBILITY EQUIPMENT RESEARCH AND DEVELOPMENT COMMAND FORT BELLEVILLE, VIRGINIA 22060	
ONE PLACE ( .01 )	2	HA	2 OCT 67	LCM-8, MOD-1, MODIFICATIONS FOR INSTALLATION OF NAVIGATION LIGHTS	
TWO PLACE ( .001 )	2	CSG	15 NOV 68		
THREE PLACE ( .0001 )	2	CONTRACT NO.		SIZE	PSCN
ANGLE 3		DESIGN APPROVAL		A1	97403
DO NOT SCALE THIS DRAWING		DATE		13226E9458	
FOR INTERPRETATION OF DRAWING GO TO 100 APPLIES		APPROVED FOR PRODUCTION		SHEET 2	
REMOVE SHARP AND SQUARE SHARP EDGES		DATE			
SHARP EDGES	10	DATE			
FILED MARK	10				
MATERIAL					

33









35

UNLESS OTHERWISE SPECIFIED DIM/TOLERANCES ARE:	DRAWN BY: HA	DATE: 2 OCT 84	U.S. ARMY MOBILITY EQUIPMENT RESEARCH AND DEVELOPMENT COMMAND FORT BELVOIR, VIRGINIA 22060	
ONE PLACE (1.31) 3	CHECKED BY: <i>plab</i>	15 NOV 84	LCM-8, MOD-1, MODIFICATIONS FOR INSTALLATION OF NAVIGATION LIGHTS	
TWO PLACE (1.20) 3	SEC C/C			
THREE PLACE (1.20) 4	CONTRACT NO.		SIZE: A1	FLCM: 97403
FOUR PLACE (1.20) 4	DESIGN APPROVAL: <i>John H. Hart</i>		DWG NO: 13226E9458	
ANGLES 2	DATE: 15 NOV 84		SCALE:	SHEET: 4
DO NOT SCALE THIS DRAWING	APPROVED FOR PROCUREMENT:			
FOR INTERPRETATION AT DRAWING/STD TO THE APPLICABLE	DATE:			
REMOVE BORDS AND BREAK SHARP EDGES				
SHARP EDGES TO				
FILLET RADIUS TO				
MATERIAL:				